



1. EXTERNAL CABLE SC17 IS ASSOCIATED WITH ALTERNATE BID NUMBER 5 STATING:
1. BASE BID: PROVIDE SLAB ON GRADE AT EXTERIOR DOOR C1584.
2. ALTERNATE: PROVIDE INTERIOR SECURED FENCED IN REE YARD WITH 4" CONCRETE SLAB ON GRADE; DETENTION GRADE ADA TOILET/SINK COMBI UNIT; DET GRAB BARS; DETENTION GRADE ADA HILO CHILLED WATER DRINKING FOUNTAIN; 8" CMU PRIVACY WALLS AT TOILET.
2. DATA CABLES SUPPORTING CATEGORIES SC15 AND SC18 TO BE RAN TO THE EXISTING DATA ROOM IN THE ADMIN STORAGE AREA. THESE CABLES TO BE TERMINATED TO THE NEW CCTV PATCH PANEL AND CONNECTED TO THE NEW PoE DATA SWITCH IN THE ADMIN STORAGE AREA.
3. DATA CABLE SUPPORTING SC17 TO BE RAN TO THE NEW SEC./DATA ROOM C206. THIS CABLE TO BE TERMINATED TO THE NEW CCTV PATCH PANEL AND CONNECTED TO THE NEW PoE DATA SWITCH IN ROOM C206
4. ALL CABLES USED WITHIN BRUIED CONDUIT MUST BE OUTSIDE PLANT RATED.
5. SEE SHEET Y7-602, CCTV CAMERA SCHEDULES , FOR CAMERA TYPES AND SPECIFICATION SECTIONS

Dewberry®

800 North Magnolia Ave.
Suite 1000, Orlando, FL
32803-3251

t +1 407.843.5120
f +1 407.648.8564

Ajax

10365 Hood Road South Suite 203 t +1 904.262-8660
Jacksonville, FL 32257 f +1 904.262-8623

Professional Seals

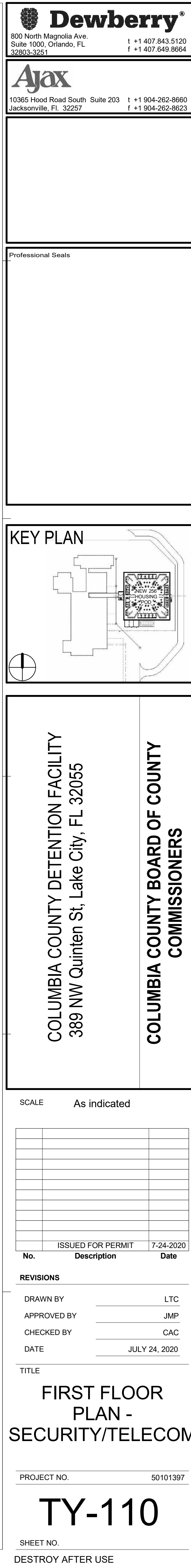
KEY PLAN

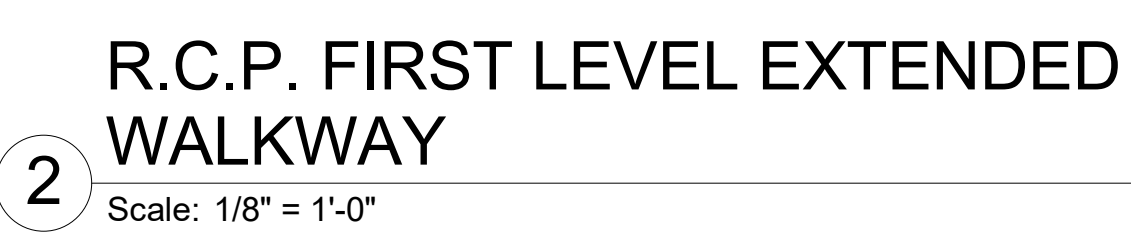
COLUMBIA COUNTY DETENTION FACILITY
389 NW Quinten St Lake City, FL 32055

COLUMBIA COUNTY BOARD OF COUNTY COMMISSIONERS

SCALEAs indicated

No.	Description	Date
ISSUED FOR PERMIT		7-24-2020
REVISIONS		
DRAWN BY	LTC	
APPROVED BY	JMP	
CHECKED BY	CAC	
DATE	JULY 24, 2020	
TITLE		
OVERALL FIRST FLOOR PLAN - SECURITY/TELECOM		
PROJECT NO.	50101397	
TY-100		
SHEET NO.		
DESTROY AFTER USE		



[illegible]

GENERAL NOTES:

- CELL CONDUITS FOR OVERHEAD LIGHTING, NIGHT LIGHTING, INTERCOM AND LOCK CONTROL, TO BE RAN TO BACK OF CELL. CELL CONDUIT SHALL BE RUN TO THE BACK OF THE CELL, THROUGH ENCLOSURE, LOCKING ENCLOSURE WILL BE CENTERED ON BLOCK OF CELLS. ALL CELL CONDUIT IN ITS PARTICULAR BLOCK WILL BE RUN TO THE BACK OF THE CELL, THROUGH ENCLOSURE, LOCKING ENCLOSURE WILL BE CENTERED ON BLOCK OF CELLS. ALL CELL CONDUIT WILL BE RUN FROM LOCKING ENCLOSURE TO UPPER TIER SECURITY DATA CLOSET C206. SEE SECURITY DETAILS FOR FURTHER INFORMATION.
- ALL INTERCOM LOCATIONS WITHIN DETENTION CELLS TO FOLLOW ALTERNATE BID #4 STATED AS:
- INTERCOM: ALL PRECAST CONCRETE CELL LOCATION, INTERCOM, BACK BOX AND CONDUIT IS NOT REQUIRED. (OMIT FROM DESIGN)
- ALL INTERCOM PRECAST ONLY CELLS AND BACK BOX TO FOLLOW INTERMEDIATE INTERCOMS AT EACH PRECAST CELL LOCATIONS
- SEE SHEET TV-602, CCTV CAMERA SCHEDULES, FOR CAMERA TYPES AND SPECIFICATION SECTIONS

SHEET KEYNOTE

- ① LOCKING ENCLOSURES. RUN ALL CELL SECURITY LIGHTING CONTROL, LOCKING CONTROL AND INTERCOM CABLES TO THIS LOCATION.

1 SECURI
Scale: 1/8" = 1'-0"

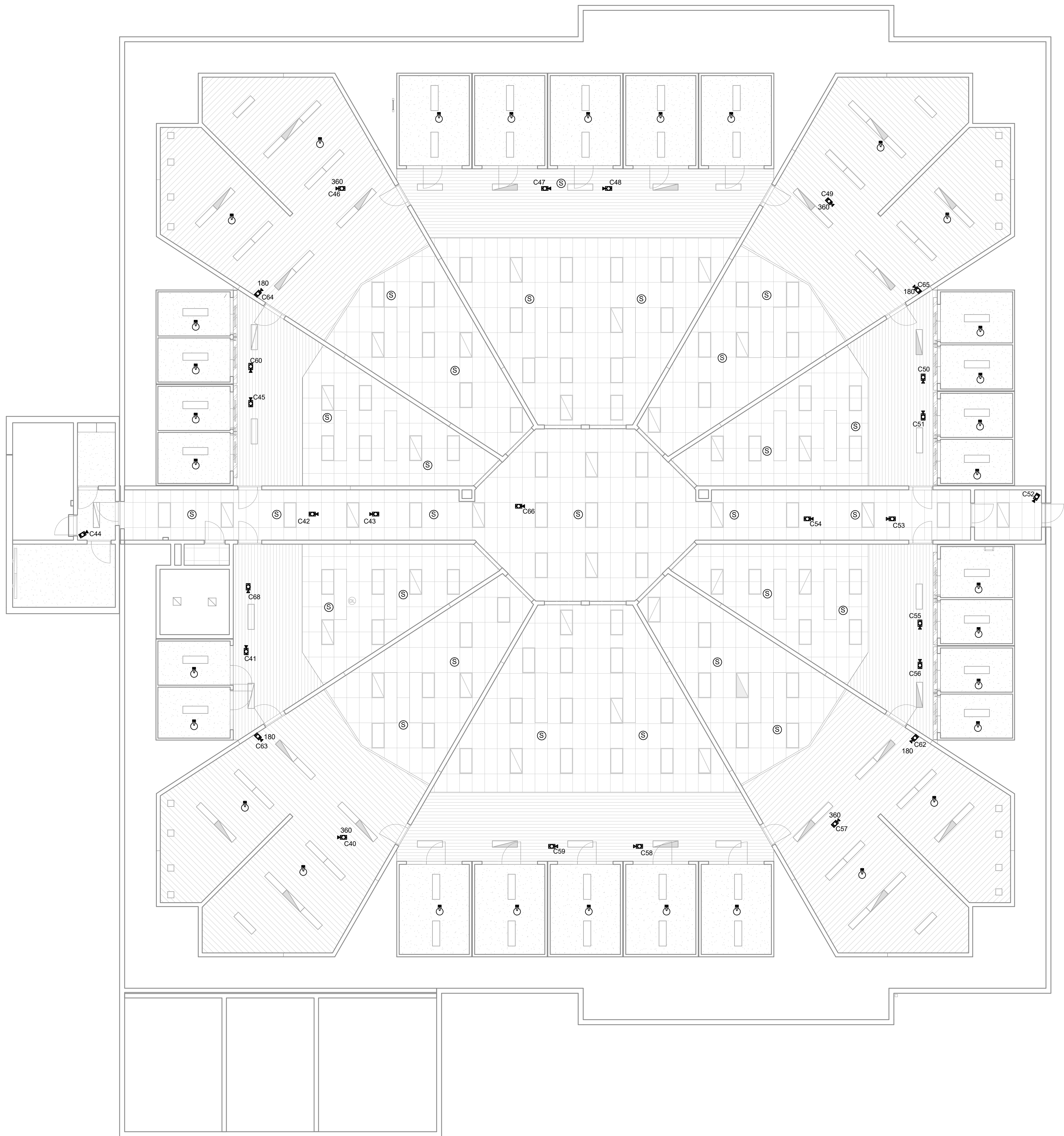
REVISIONS	
DRAWN BY	LTC
APPROVED BY	JMP
CHECKED BY	CAC
DATE	JULY 24, 2020

PROJECT NO.	50101397
-------------	----------

SHEET NO. _____

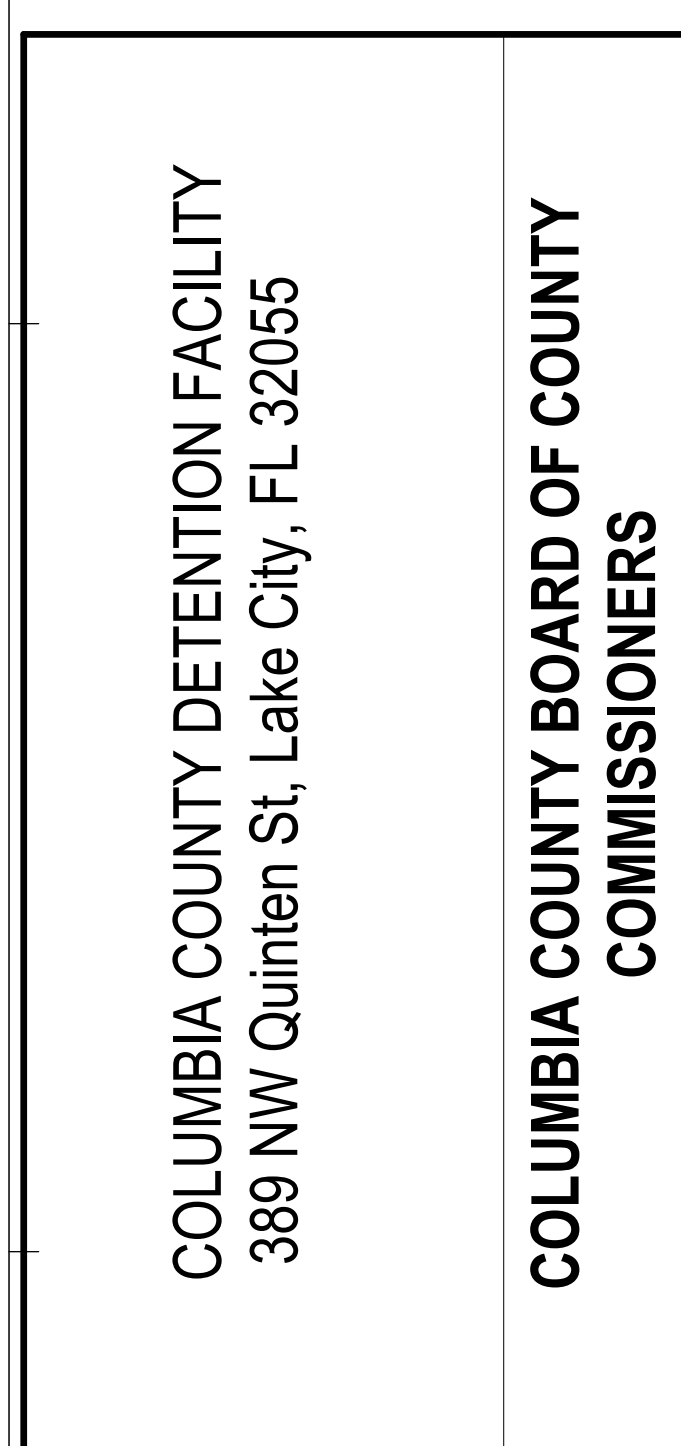
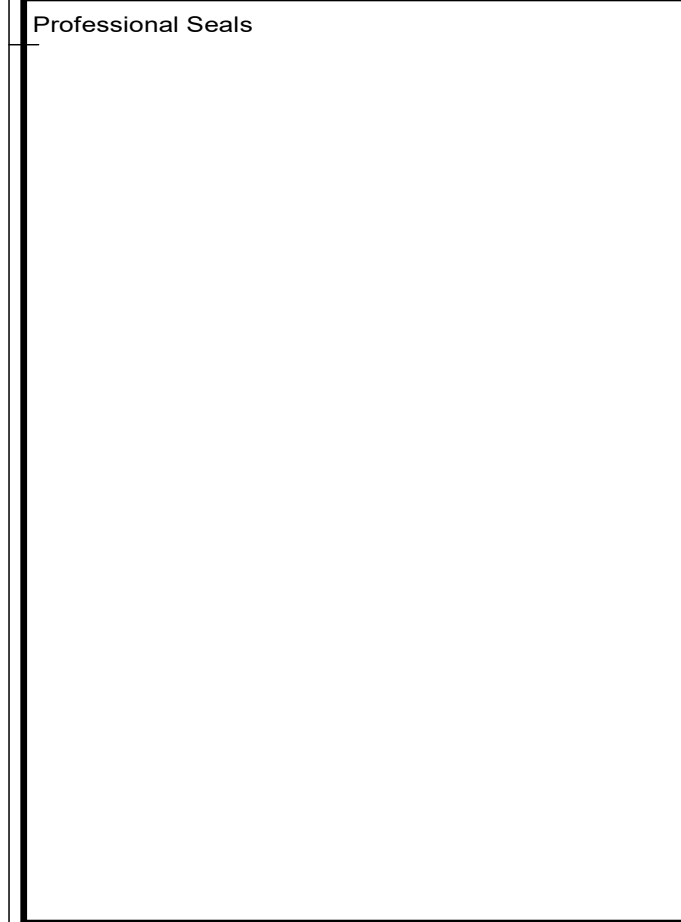
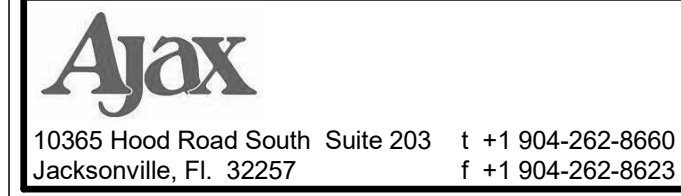
DESTROY AFTER USE

SYMBOL	DESCRIPTION
	CONTROLLED AND MONITORED DETENTION DOOR.
	CONTROLLED AND MONITORED COMMERCIAL DOOR.
	CONTROLLED GATE OPERATOR.
	CONTROLLED AND MONITORED SLIDING DOOR DEVICE.
	MONITORED DETENTION DOOR
	INTERCOM SUB-STATION WITH CALL BUTTON.
	INTERCOM MASTER STATION.
	DURESS ALARM PUSH BUTTON.
	DOOR INTERLOCK FUNCTION.
	TOUCH SCREEN CONTROL LOCATION.
	GUARD TOUR PROXIMITY READER.
MONITOR	WALL MOUNTED LARGE FORMAT SURVEILLANCE MONITOR.
	VIDEO MANAGEMENT WORK STATION.
	NEW FIXED CCTV CAMERA. (NUMERICAL NEXT TO ICON DENOTES 180 DEGREE OR 360 DEGREE CAMERA.)
	CEILING MOUNTED PAGING SPEAKER.
	UTILITY CONTROL CIRCUIT FOR TELEVISION POWER.
	LIGHTING CONTROL.
	INMATE TELEPHONE CONTROL. INCLUDES ROUGHIN.
	VIDEO VISITATION STATION; INCLUDES ROUGHIN
	WALL MOUNTED TELECOMMUNICATIONS OUTLET
	CATV OUTLET



1 UPPER TIER RCP

Scale: 1/8" = 1'-0"



No.	Description	Date

TITLE

PROJECT NO.	50101397
-------------	----------

SHEET NO. _____

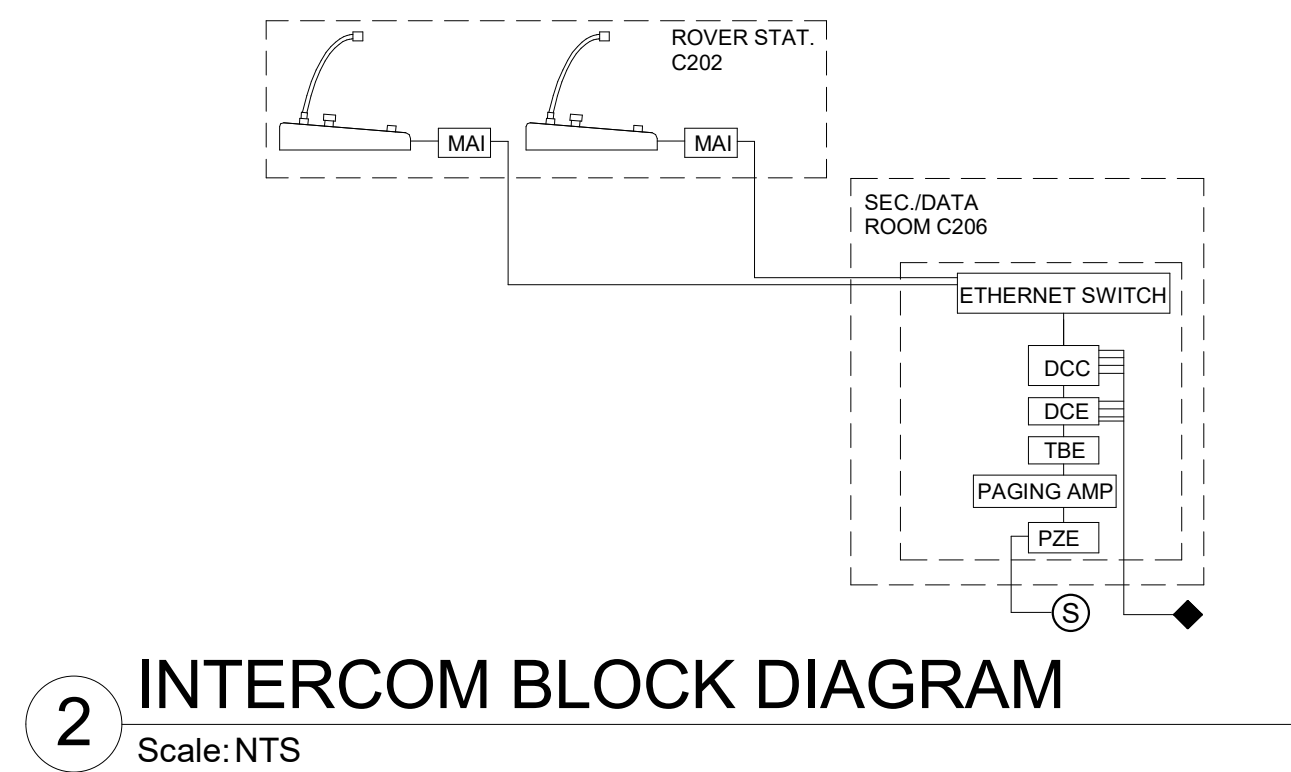
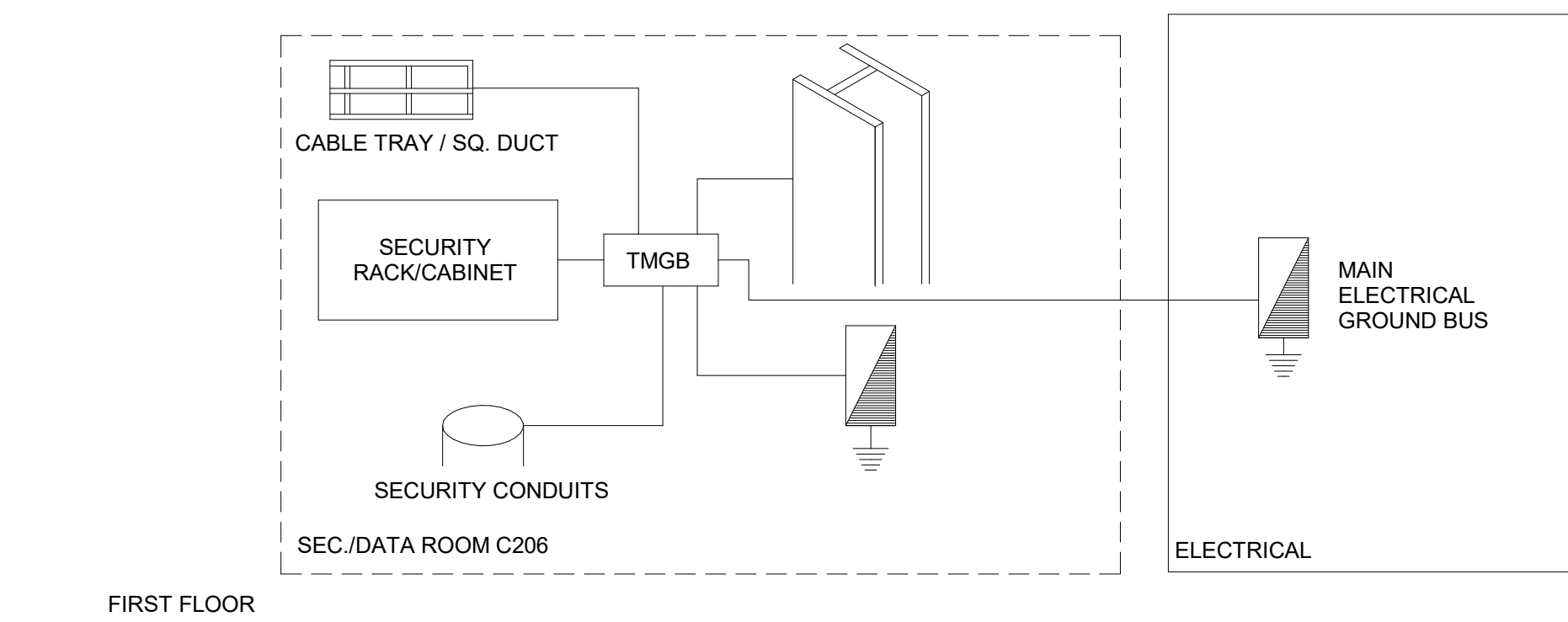
DESTROY AFTER USE



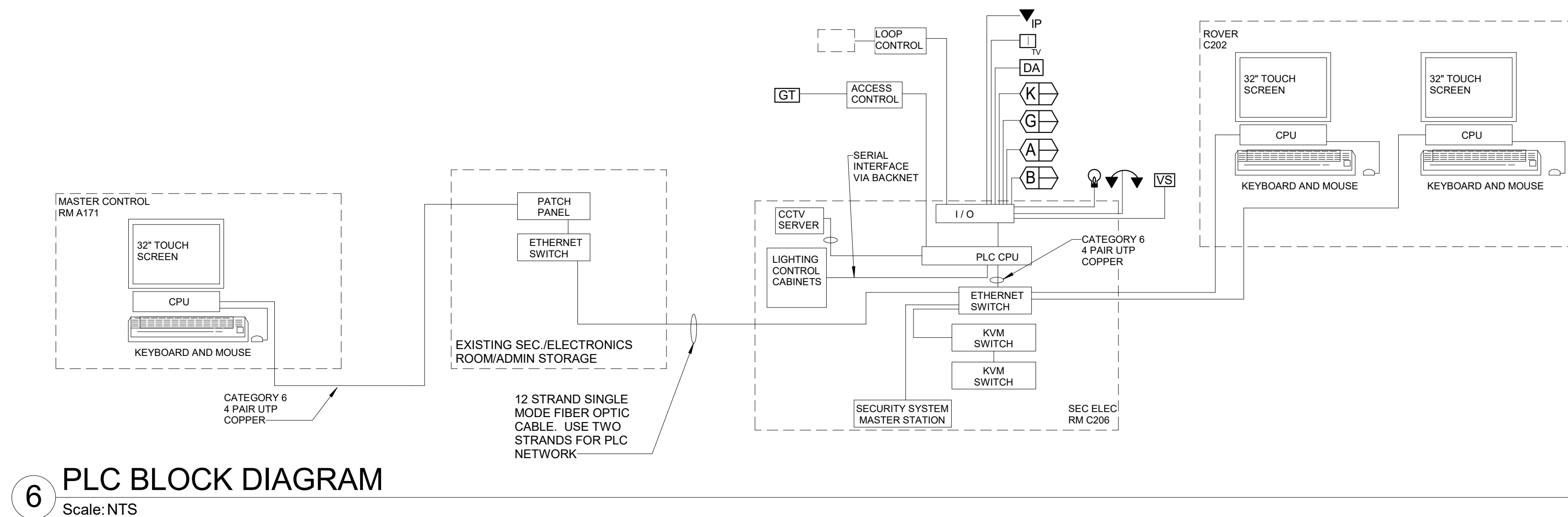
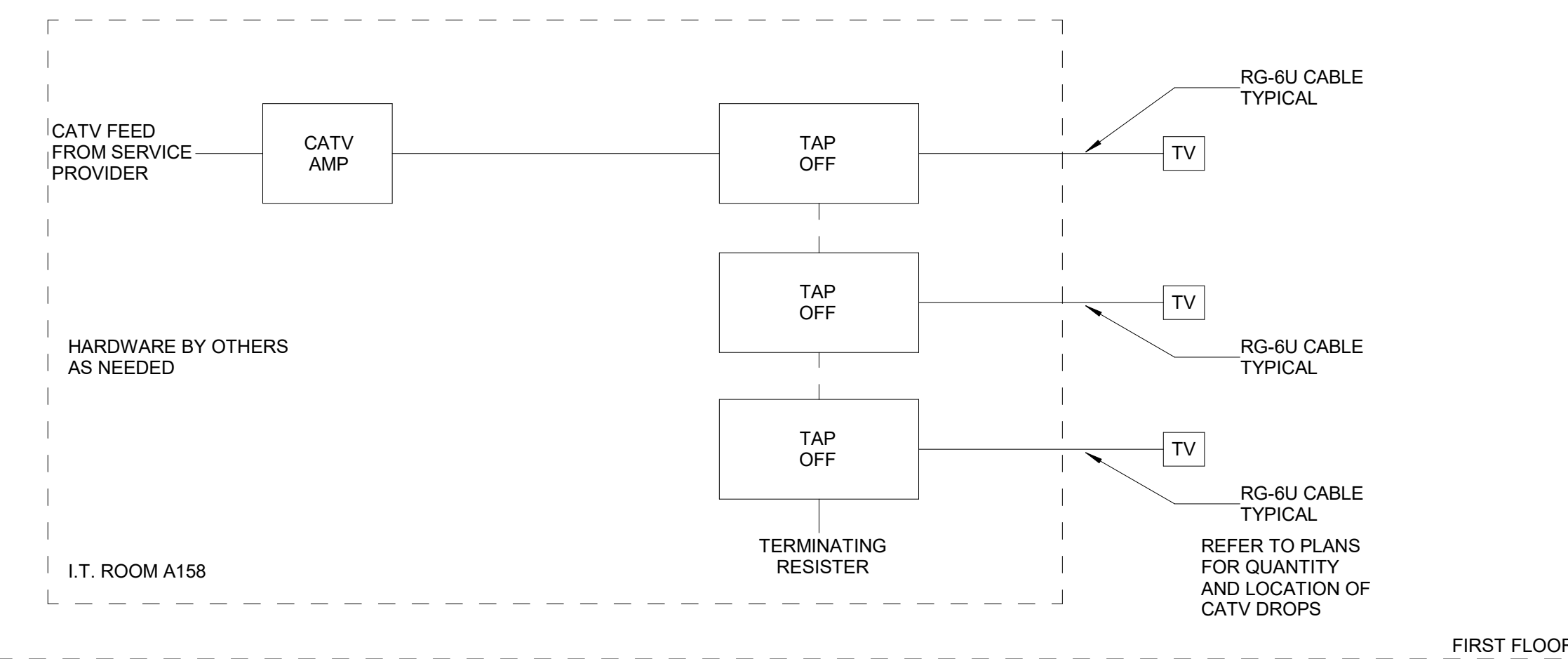
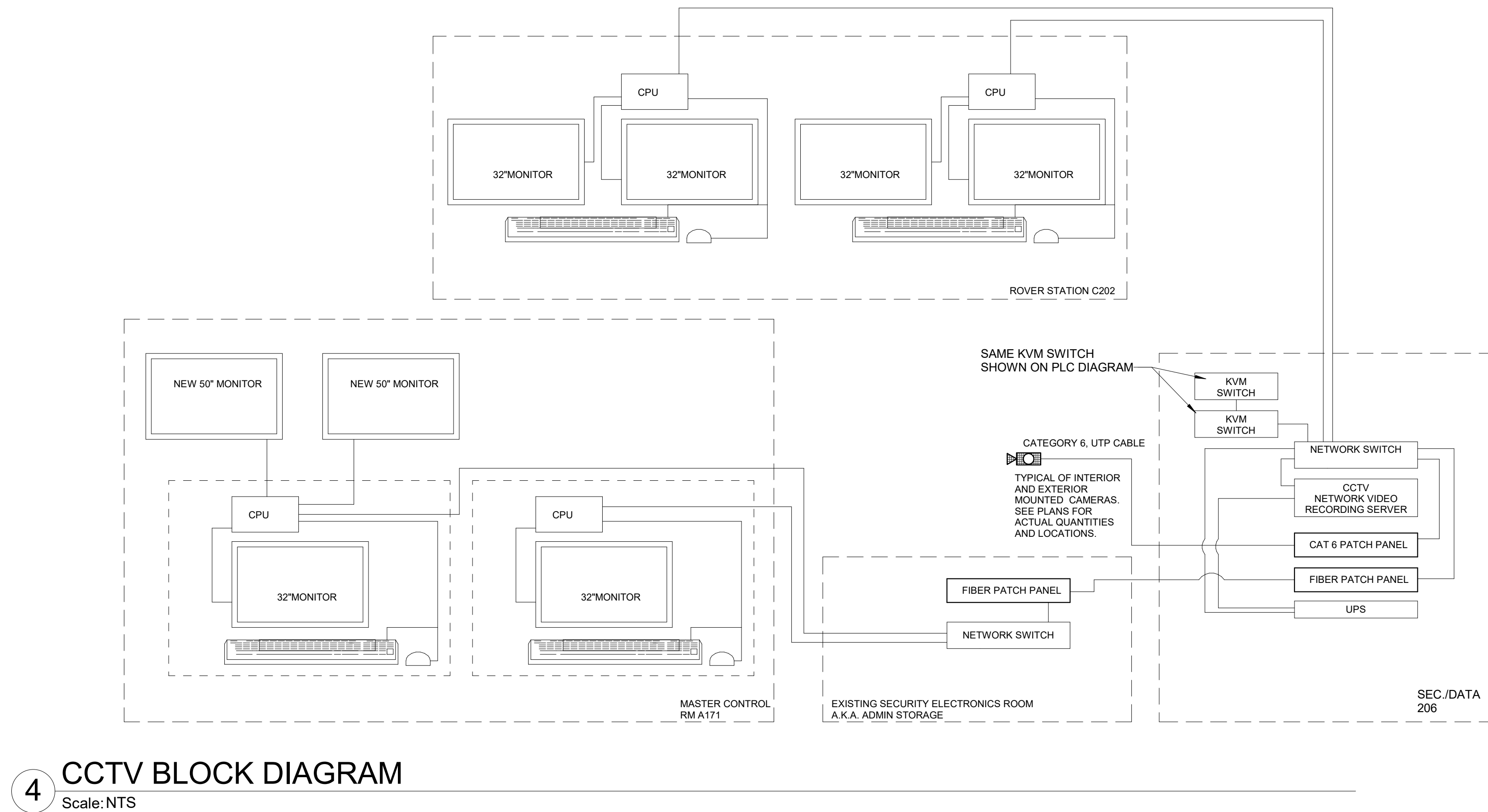
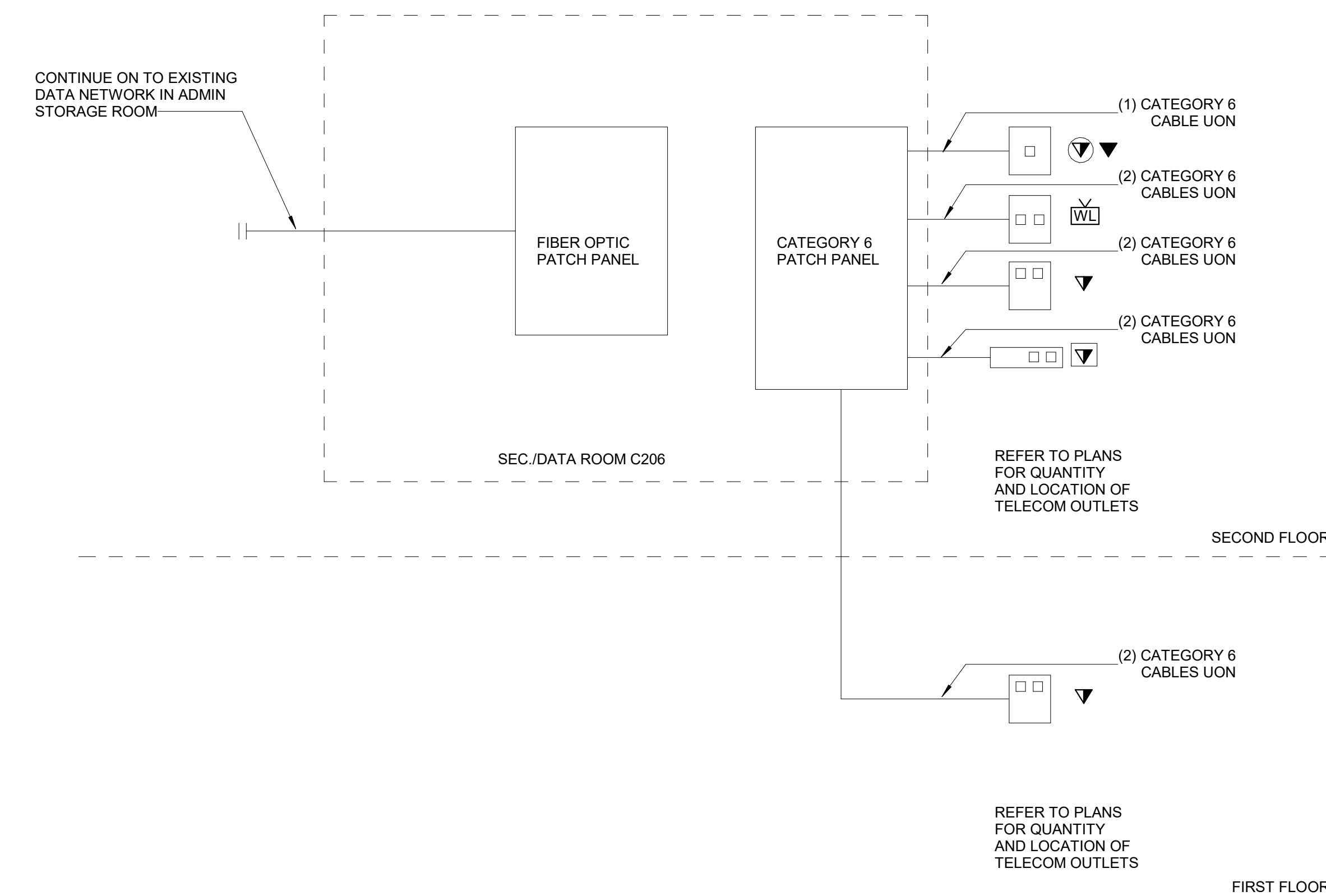
TBB GROUND CONDUCTOR SIZING CHART



PROJECT NO.	50101397
-------------	----------



TBB LENGTH	TBB SIZE
LESS THAN 13'	#6 AWG
13' - 20'	#4 AWG
20' - 26'	#3 AWG
26' - 33'	#2 AWG
33' - 44'	#1 AWG
44' - 52'	1/0 AWG
52' - 66'	2/0 AWG
GREATER THAN 66'	3/0 AWG

[illegible]

