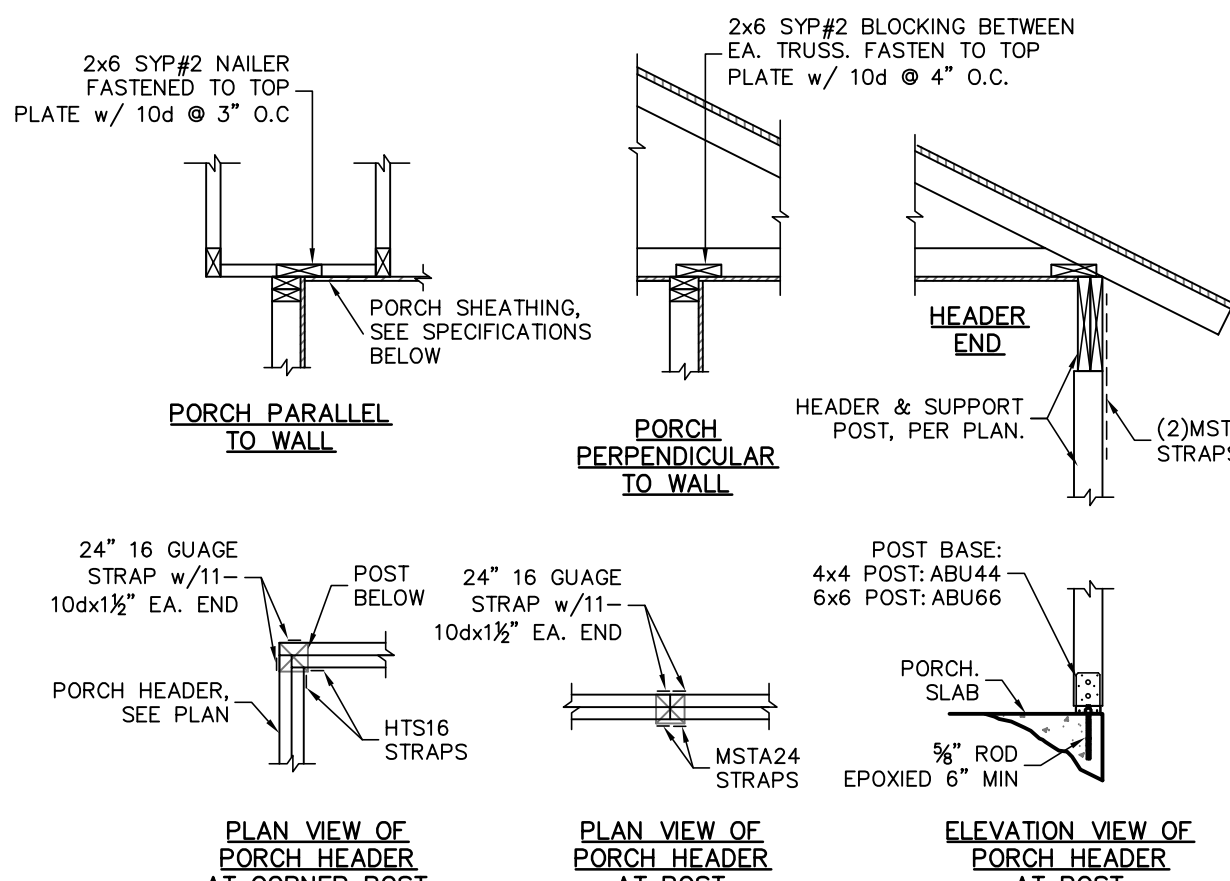


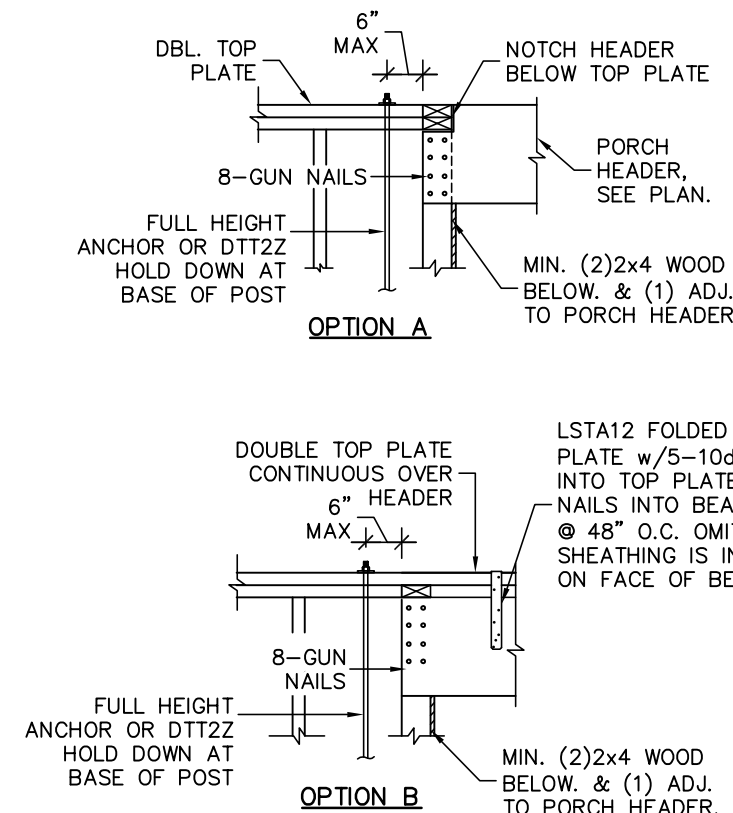
GARAGE WING WALL ELEVATION

GARAGE WING WALL SECTION

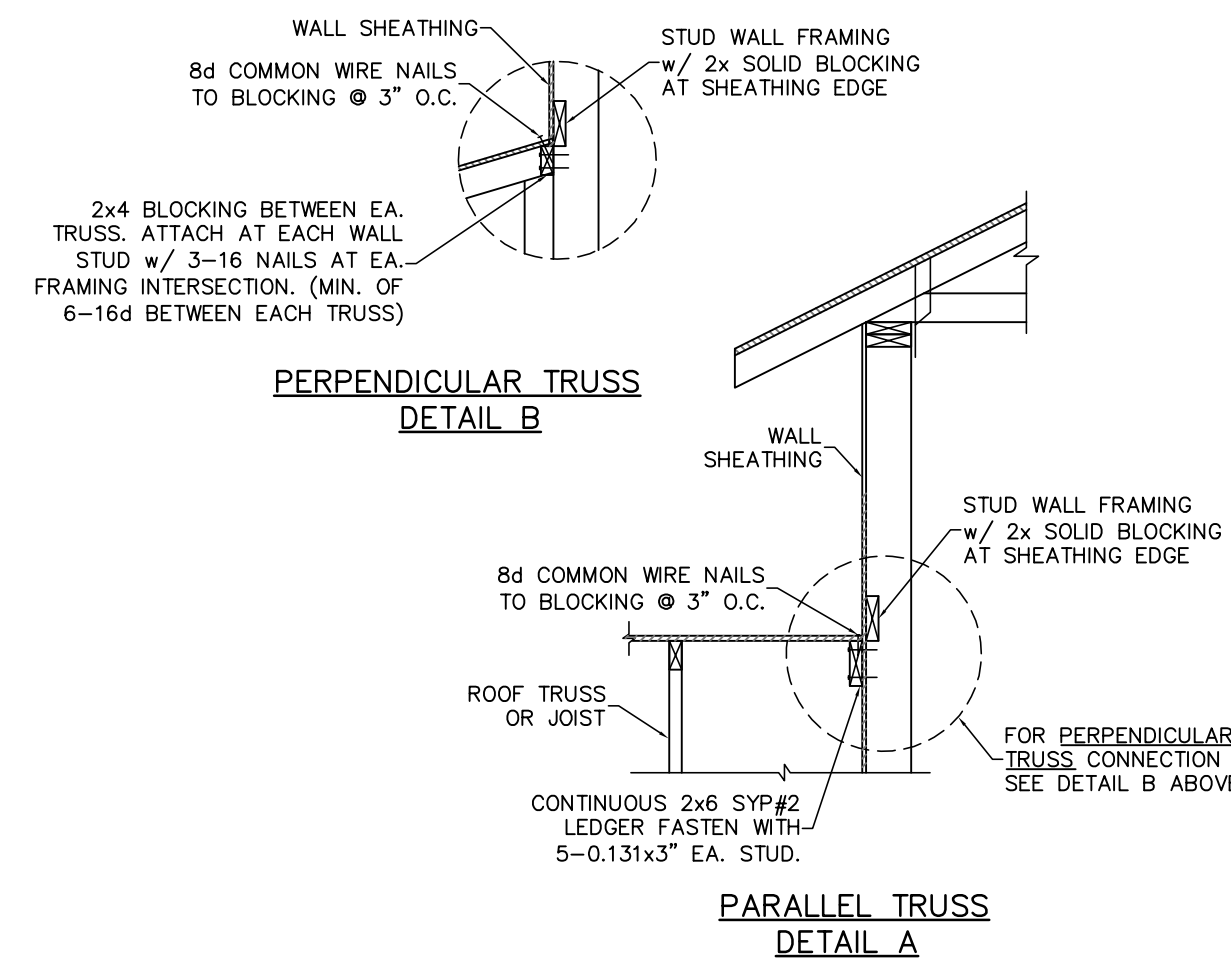
1
S0.1
GARAGE HEADER FRAMING
SCALE: N.T.S.



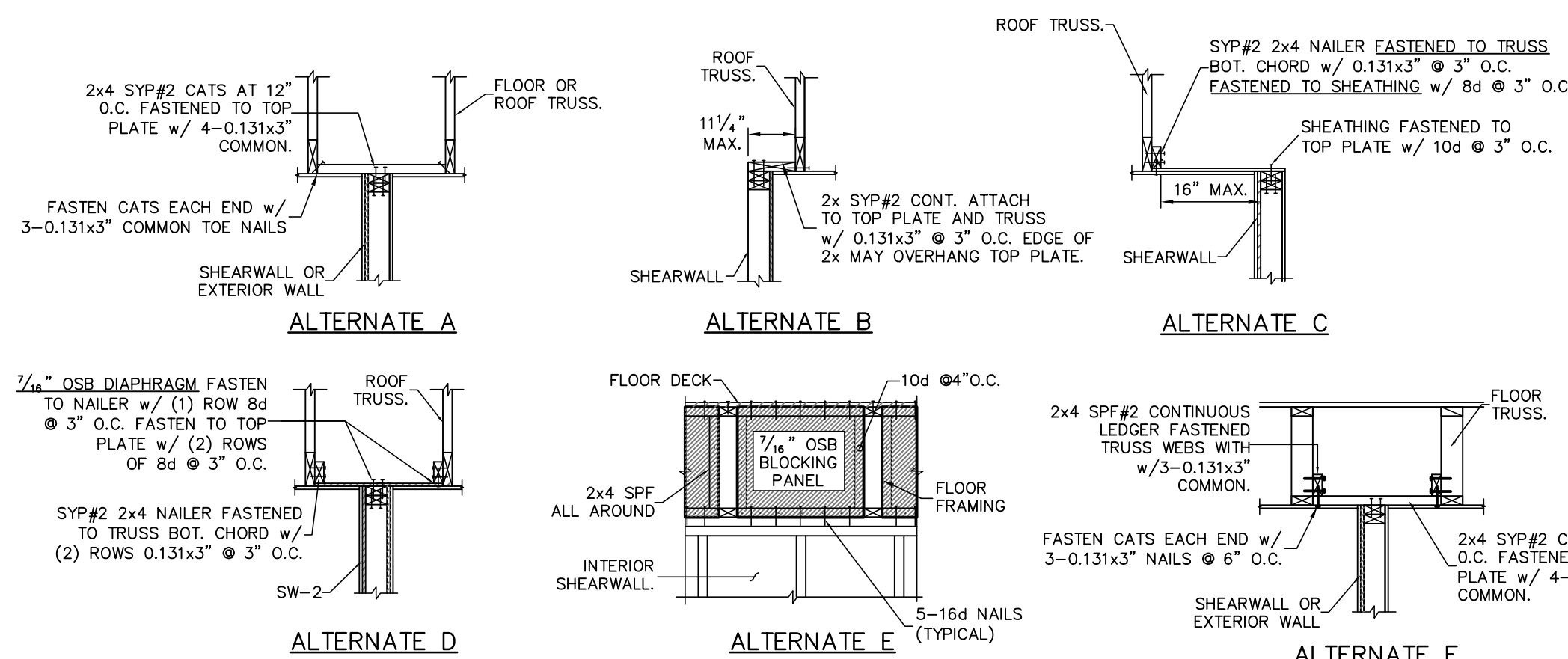
2
S0.1
TYPICAL PORCH FRAMING DETAILS
SCALE: N.T.S.



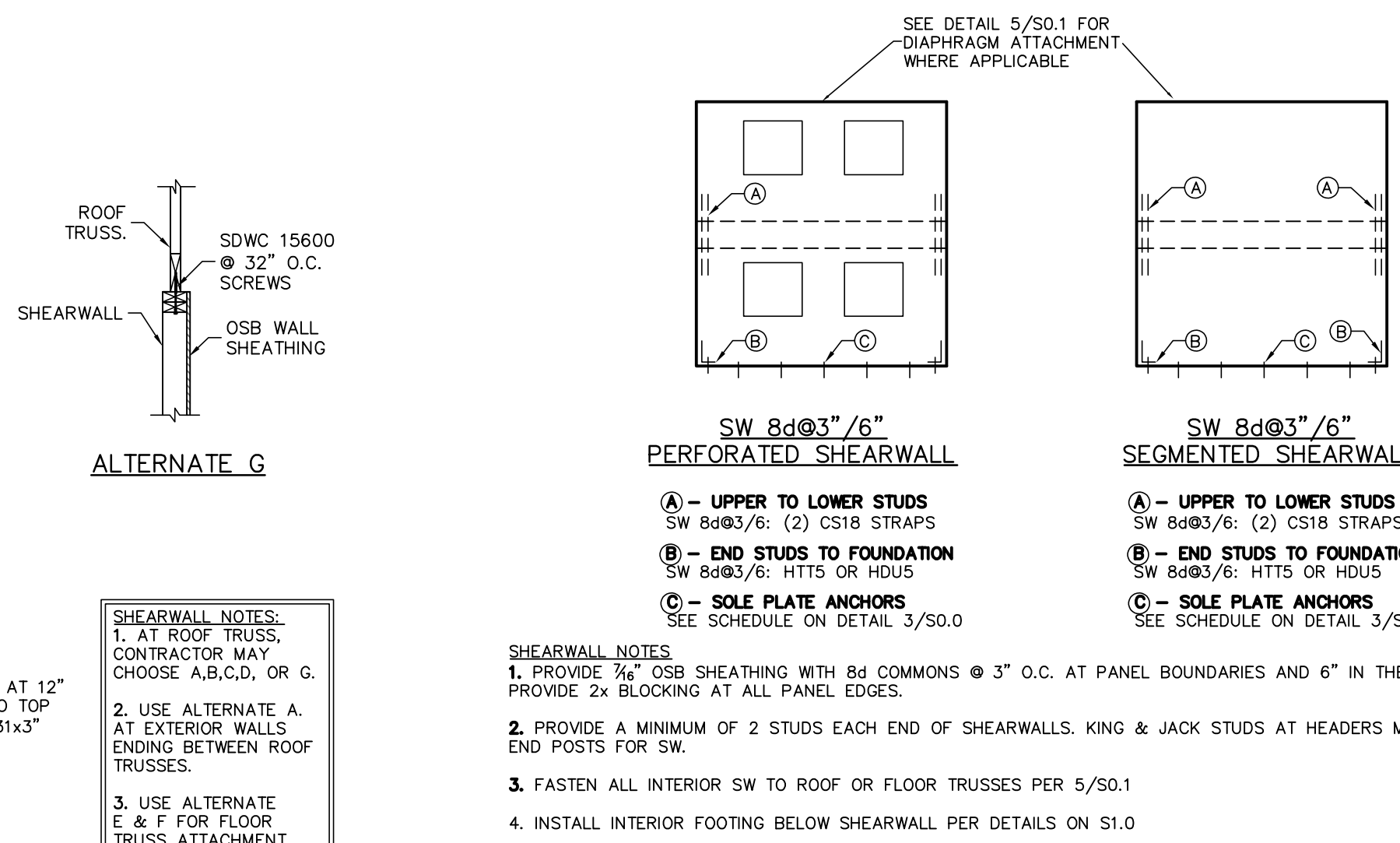
3
S0.1
TYPICAL PORCH BEAM CONNECTION
SCALE: N.T.S.



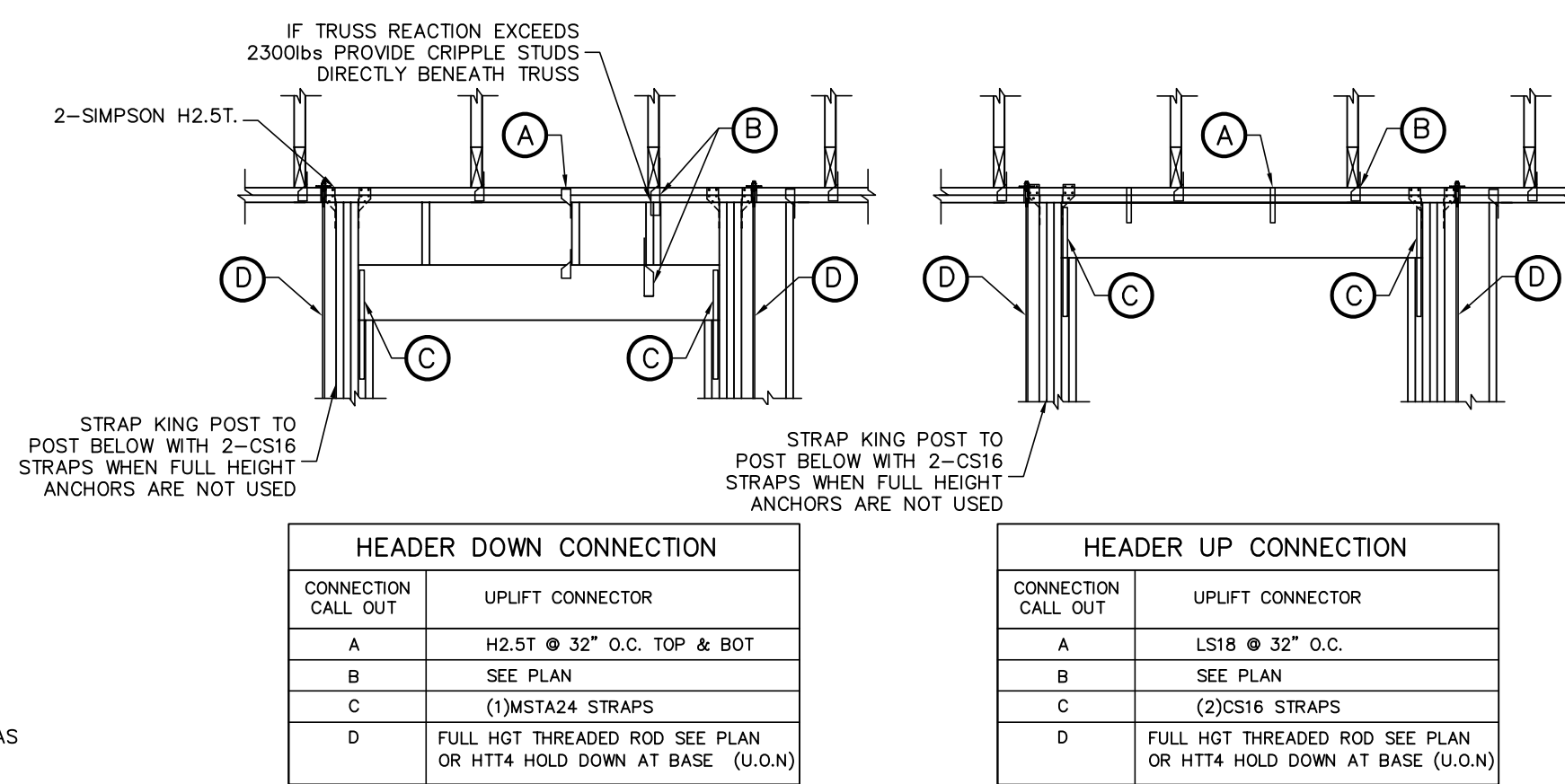
4
S0.1
WALL ADJ. TO ROOF CONNECTION
SCALE: N.T.S.



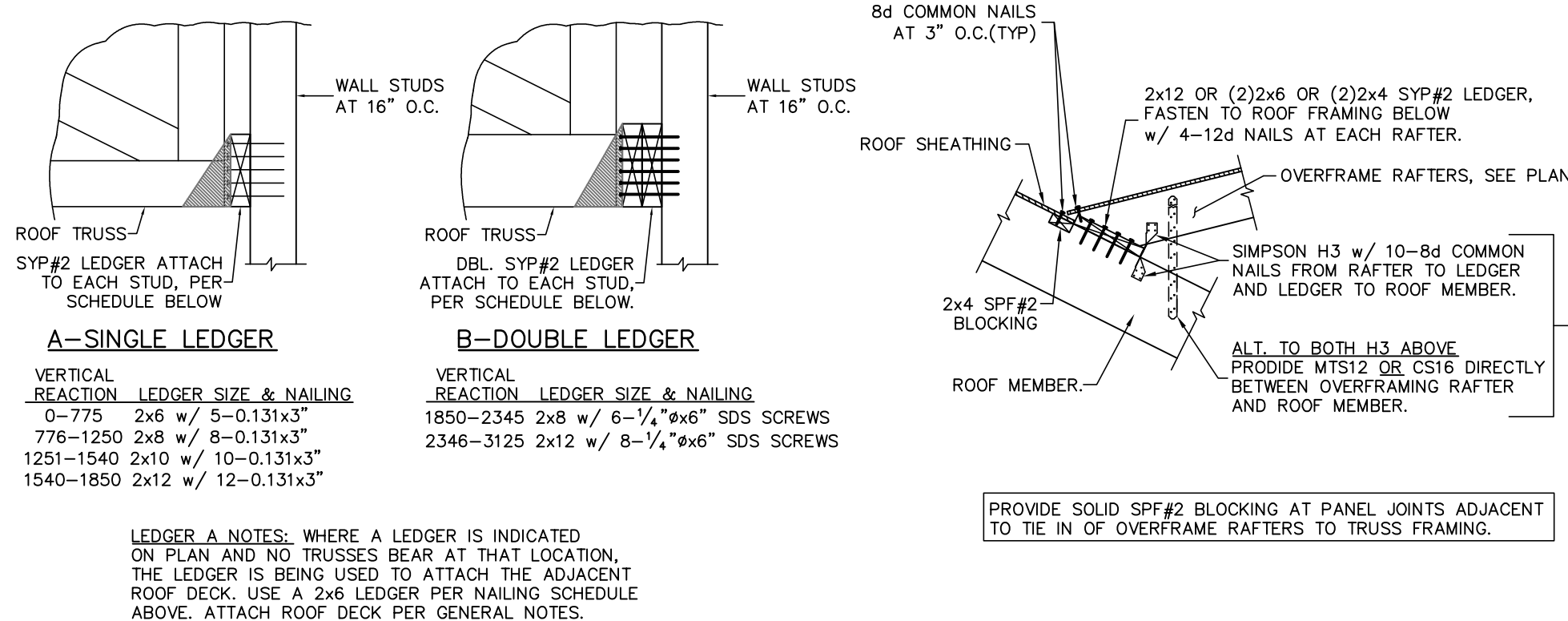
5
S0.1
SHEARWALL ATTACHMENT AT ROOF & FLOOR
SCALE: N.T.S.



6
S0.1
TYPICAL SHEARWALL ELEVATION
SCALE: N.T.S.

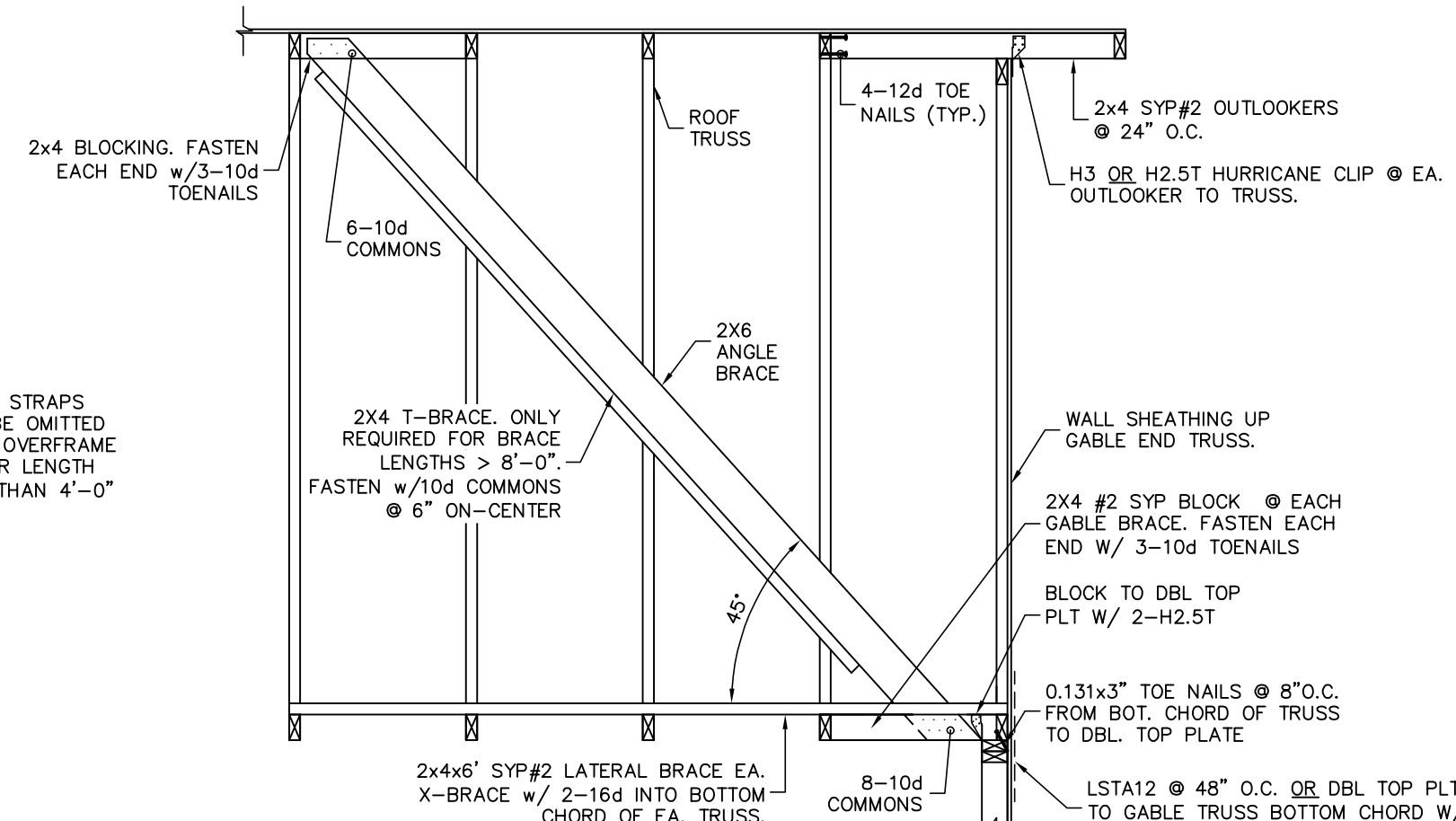


7
S0.1
HEADER TIE DOWN
SCALE: N.T.S.

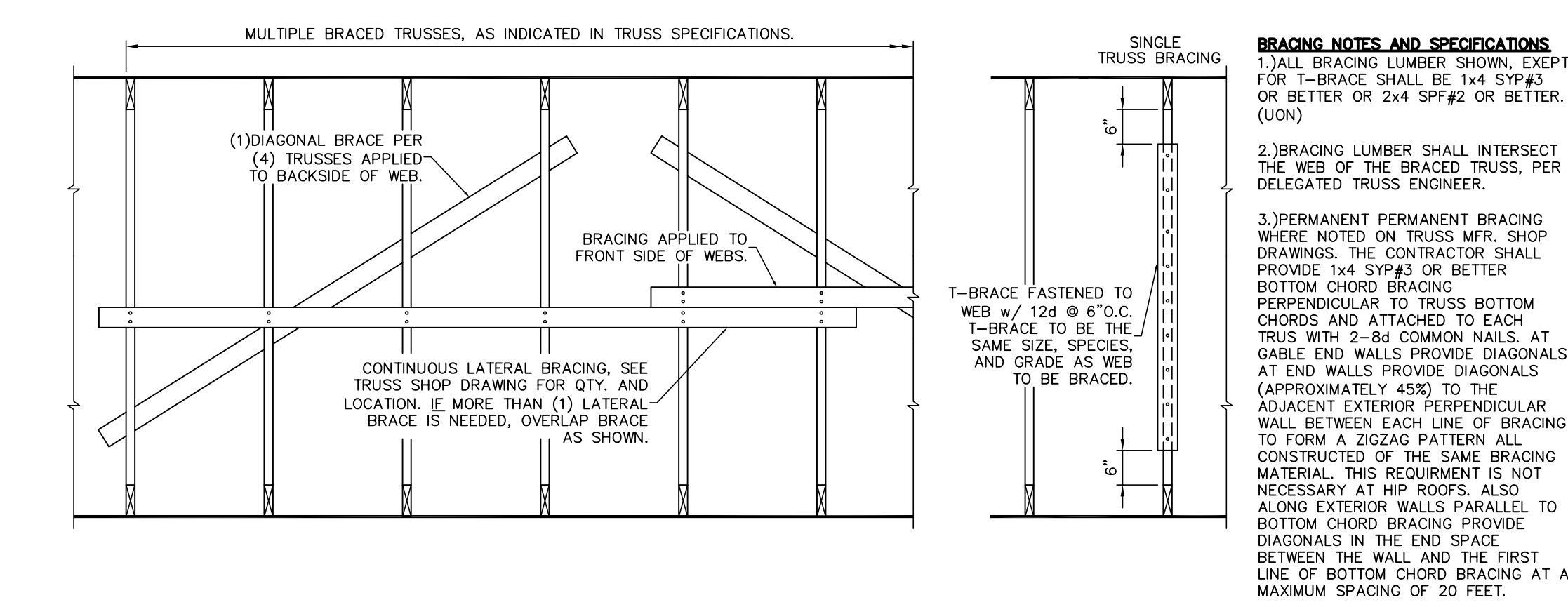


8
S0.1
LEDGER CONNECTION
SCALE: N.T.S.

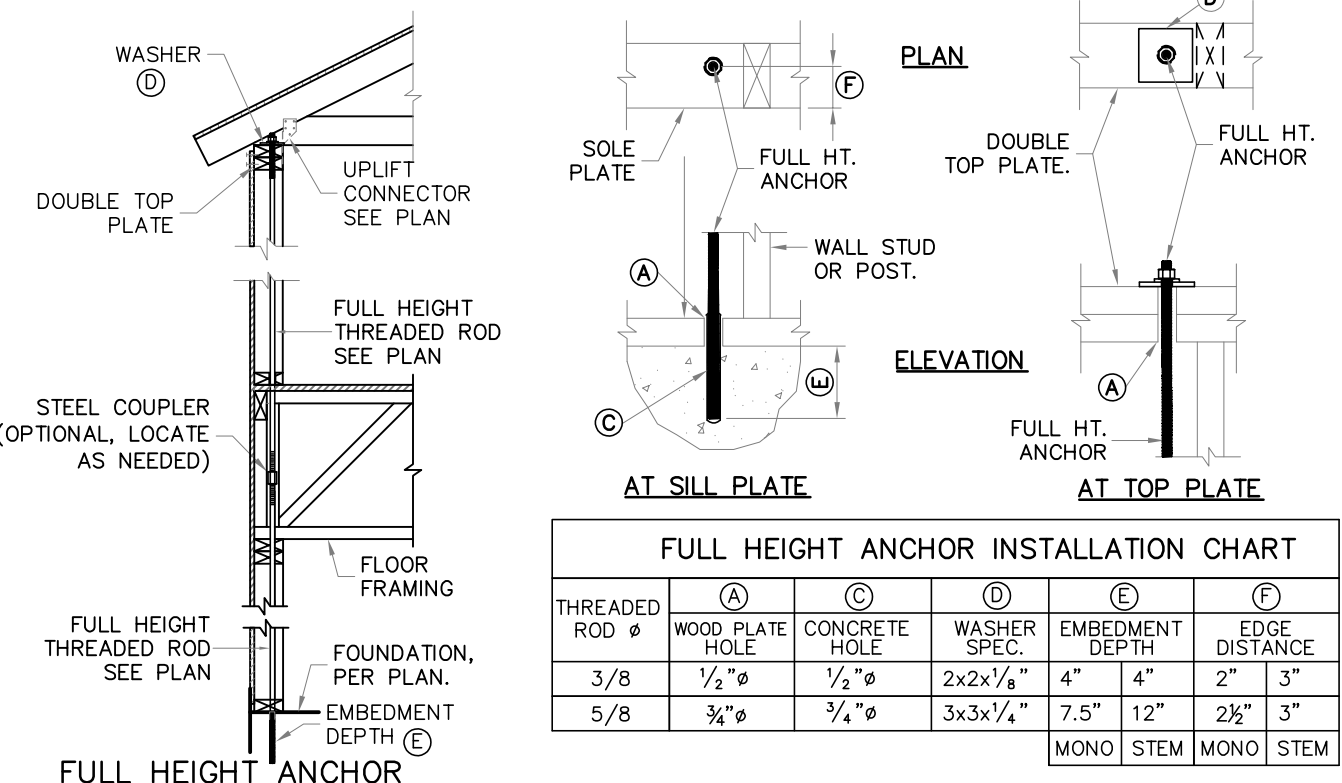
9
S0.1
DECK LEDGER AT OVERFRAME RAFTERS
SCALE: N.T.S.



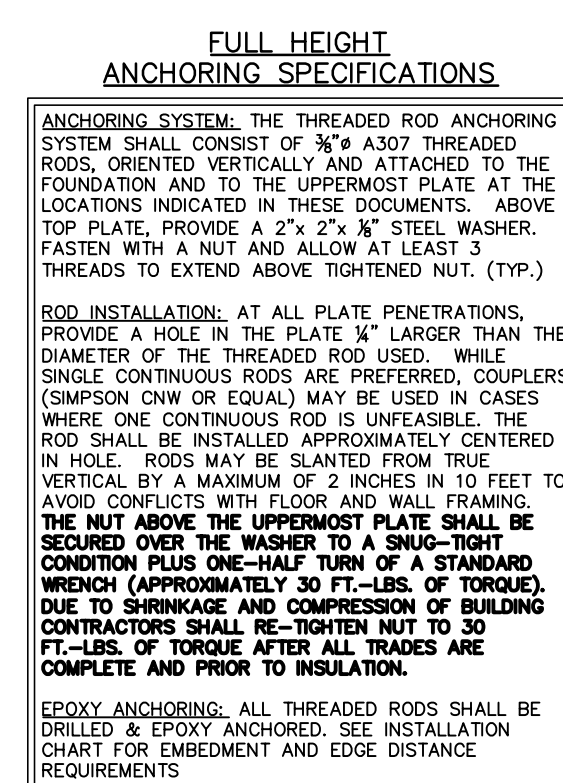
10
S0.1
GABLE END BRACING
SCALE: N.T.S.



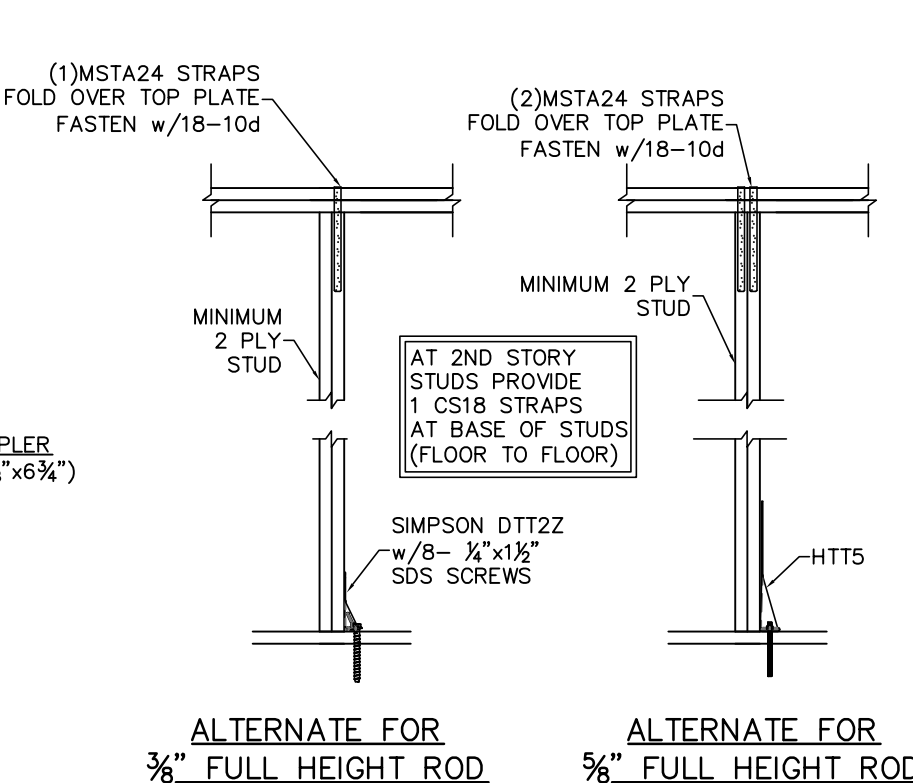
11
S0.1
PERMANENT TRUSS BRACING
SCALE: 3/4" = 1'-0"



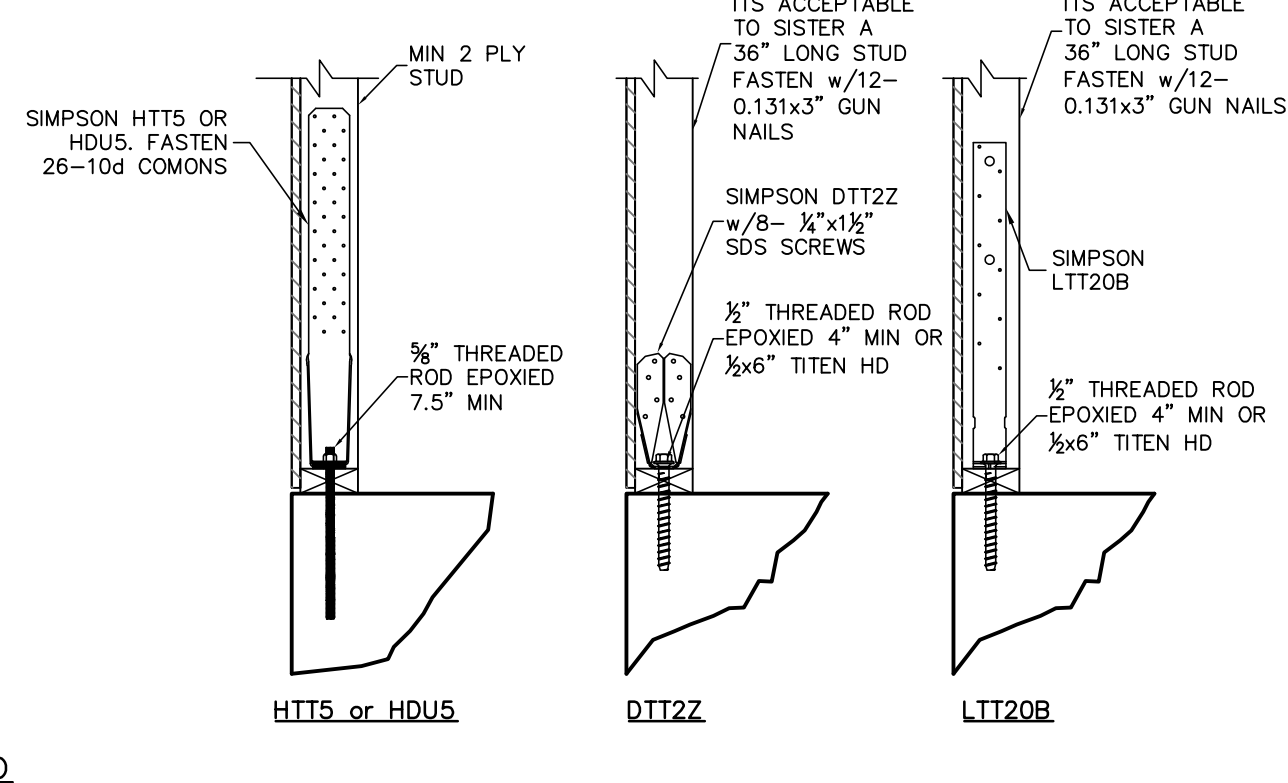
12
S0.1
FULL HEIGHT WOOD FRAME WALL ANCHORING SYSTEM
SCALE: N.T.S.



13
S0.1
3/8" FULL HEIGHT ROD ALTERNATE ATTACHMENT
SCALE: N.T.S.



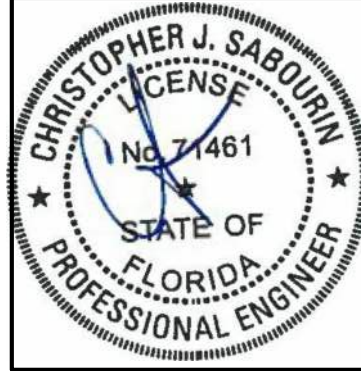
14
S0.1
FULL HEIGHT THREADED ROD ALTERNATE
SCALE: N.T.S.



15
S0.1
HOLD DOWN ATTACHMENT DETAIL
SCALE: N.T.S.

SYMBOLS LEGEND	
	DESIGNATES FOOTING LINE
	DESIGNATES SAWCUT LINE
	INTERIOR LOAD BEARING WALL
	DESIGNATES SLAB RECESS

SABO
STRUCTURAL
ENGINEERING
CA#32529
235 9TH AVE N
JAX BEACH, FL 32250
904-712-5750
CHRIS@SABOENG.COM



05.01.20
Christopher J Sabourin PE
FL PE #71461

PLAN NAME
INVENTORY HOMES
SSE No.
BZEC-20-0108

ISSUE	DATE
PERMIT	05.01.20
REVISIONS	DATE

BRYAN ZECHER HOMES, INC
STRUCTURAL ENGINEERING FOR
THE INVENTORY HOME

FIELD ALTERATION

CONTRACTOR SHALL CONTACT CHRISTOPHER SABOURIN PE PRIOR TO MAKING ANY STRUCTURAL FIELD MODIFICATIONS WHICH MAY VARY FROM THE INTENT OF THE ORIGINAL CONSTRUCTION DOCUMENTS. ANY FIELD ALTERATIONS MADE PRIOR TO BEING APPROVED BY CHRISTOPHER SABOURIN MAY RESULT IN ADDITIONAL ENGINEERING OR INSPECTION FEES.

SCALING

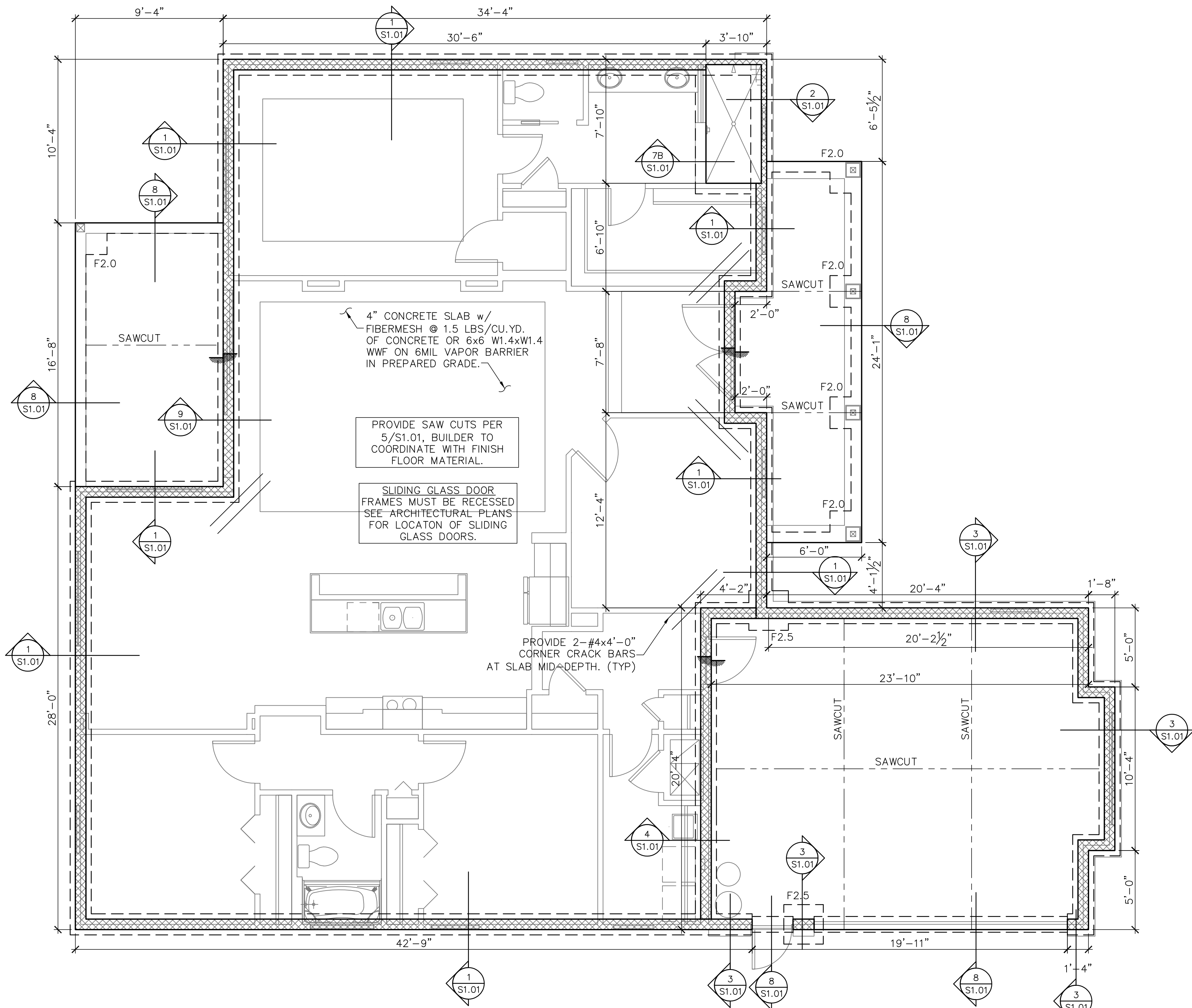
DO NOT SCALE DIMENSIONS FROM THESE DRAWINGS. IF A DIMENSION IS UNCLEAR REFER TO THE ARCHITECTURAL DRAWINGS OR CONTACT THE E.O.R.

FOUNDATION
PLAN

SHEET

S1.0

SHEET 3 OF 7



FOUNDATION PLAN

SCALE: 1/4" = 1'-0"

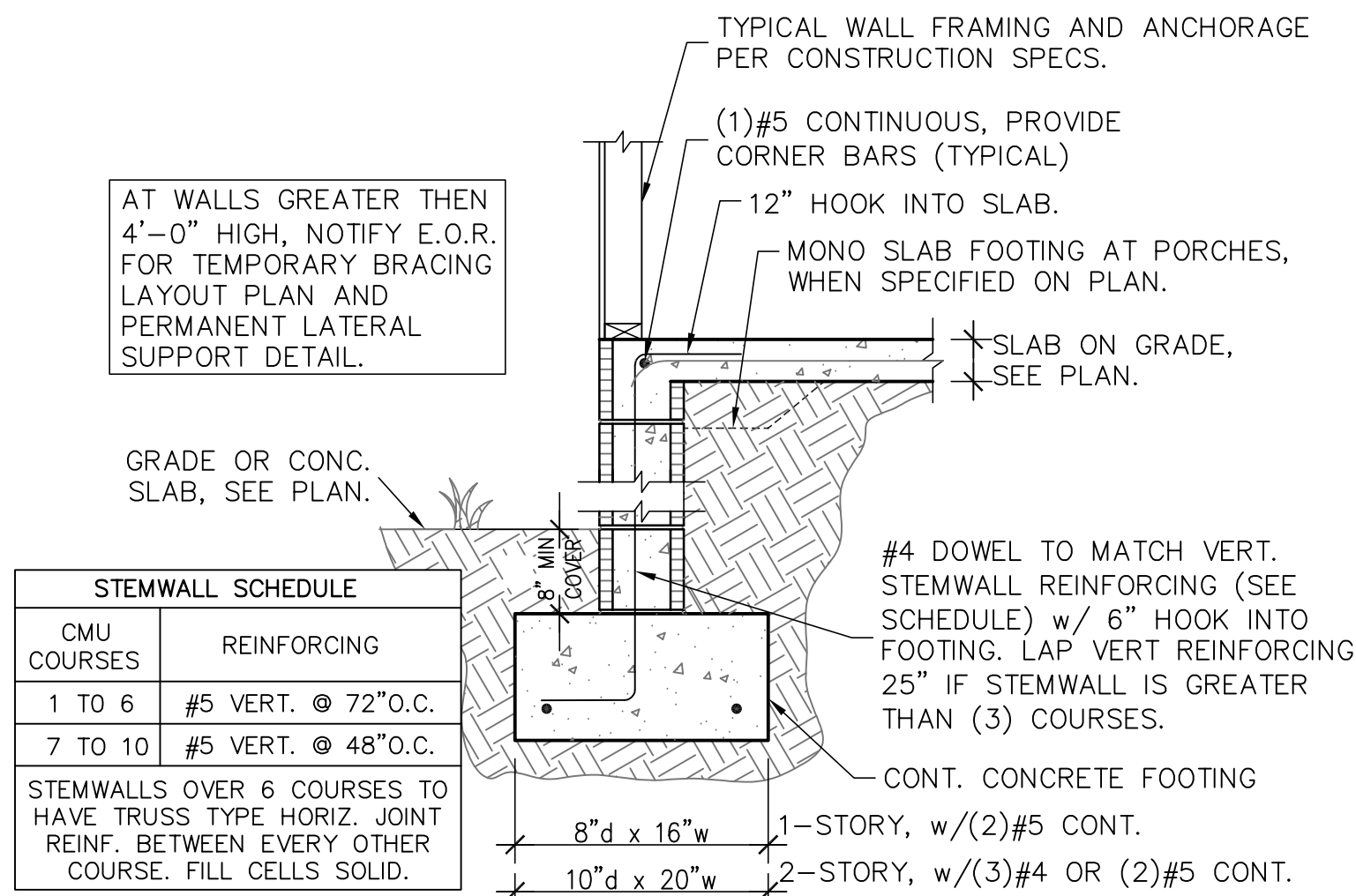
FOOTING SCHEDULE AND NOTES

TYPE	LENGTH	WIDTH	DEPTH	BOTTOM BARS
F2.0	2'-0"	2'-0"	1'-0"	3-#5 EA. WAY BOT.
F2.5	2'-6"	2'-6"	1'-0"	3-#5 EA. WAY BOT.
F3.0	3'-0"	3'-0"	1'-0"	3-#5 EA. WAY BOT.
F3.5	3'-6"	3'-6"	1'-0"	4-#5 EA. WAY BOT.
F4.0	4'-0"	4'-0"	1'-0"	4-#5 EA. WAY BOT.
F4.5	4'-6"	4'-6"	1'-0"	4-#5 EA. WAY BOT.

1. THIS FOUNDATION PLAN ONLY CONVEYS STRUCTURAL INFO. RELATED TO THE FOUNDATION. FOR GENERAL FEATURES, DIMENSIONS, CONDUITS, ELECTRICAL EMBEDS, STEP HEIGHTS, ECT., SEE ARCH. PLAN. ARCHITECTURAL PLAN SHOWN HERE IN FOR REFERENCE ONLY.

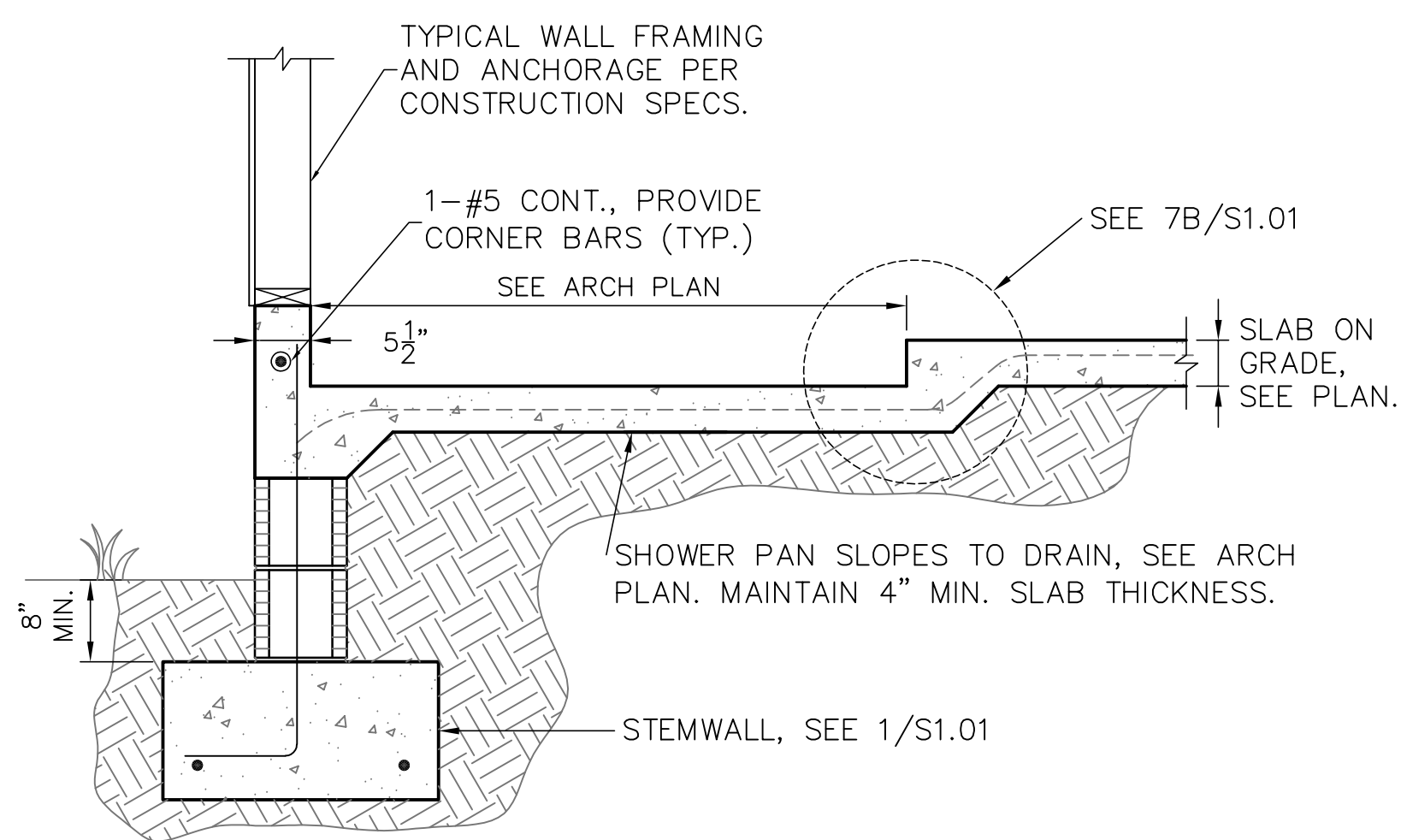
2. FTGS. & FND. SHALL BE IN ACCORDANCE w/ LOCAL BUILDING CODES.

3. SOIL COMPACTION AND FILL SHALL BE COMPACTED TO A MIN. OF 95% MODIFIED PROCTOR IN ACCORDANCE WITH ASTM D 1557.



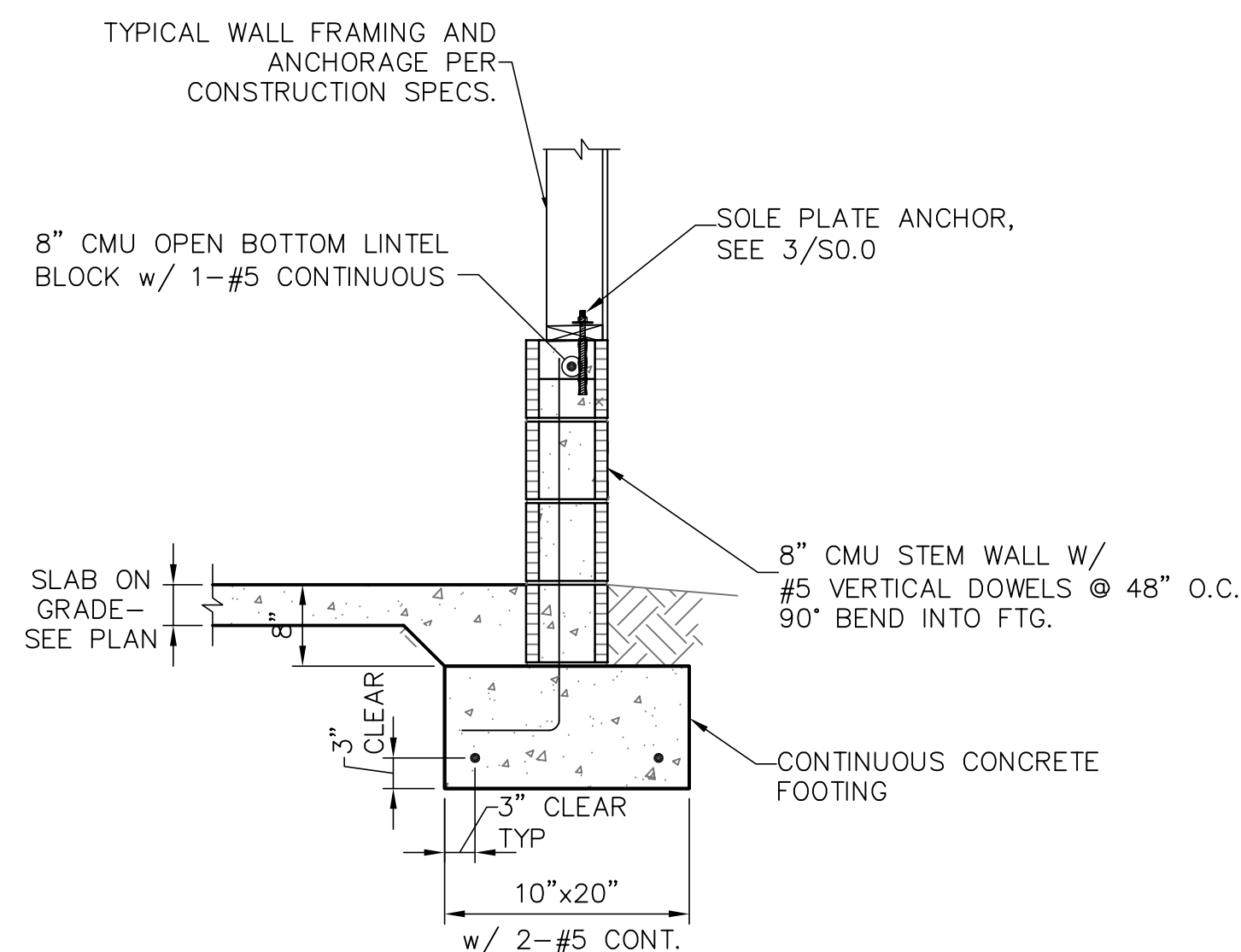
1 STEMWALL FOOTING

SCALE: 3/4" = 1'-0"



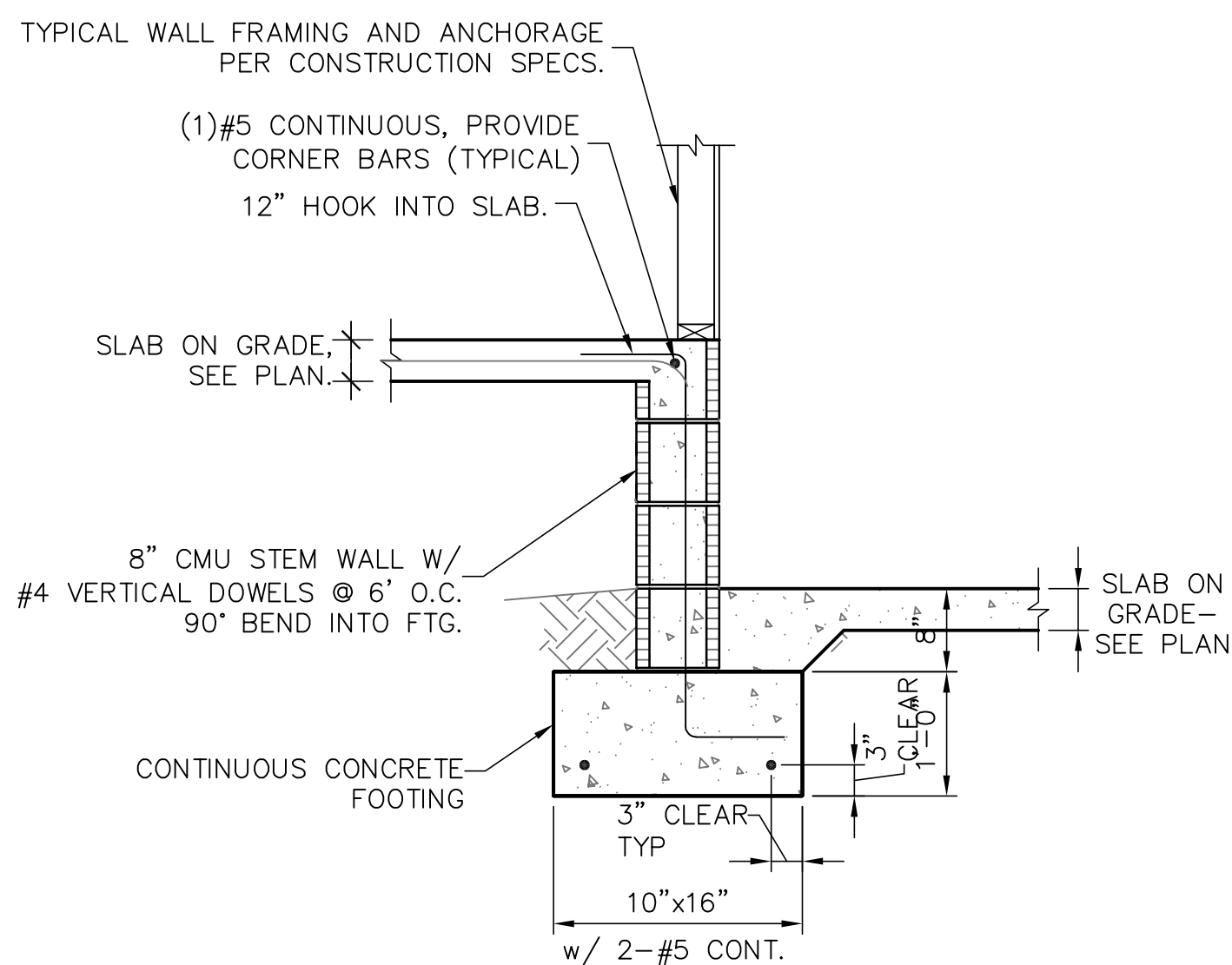
2 FOOTING W/ SHOWER RECESS

SCALE: 3/4" = 1'-0"



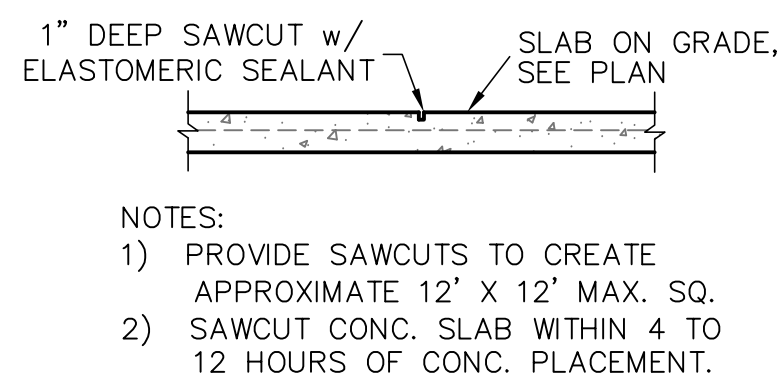
3 GARAGE STEM WALL

SCALE: 3/4" = 1'-0"



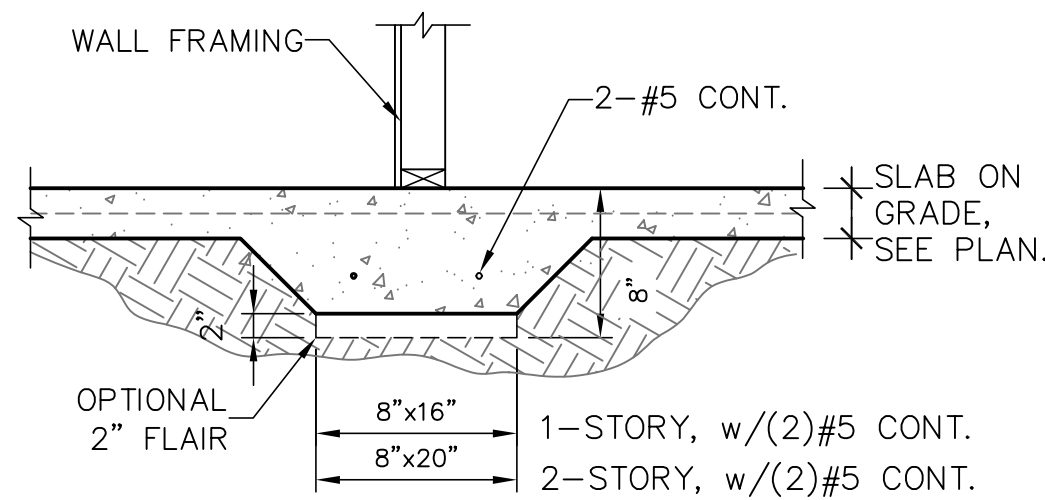
4 STEMWALL AT GARAGE

SCALE: 3/4" = 1'-0"



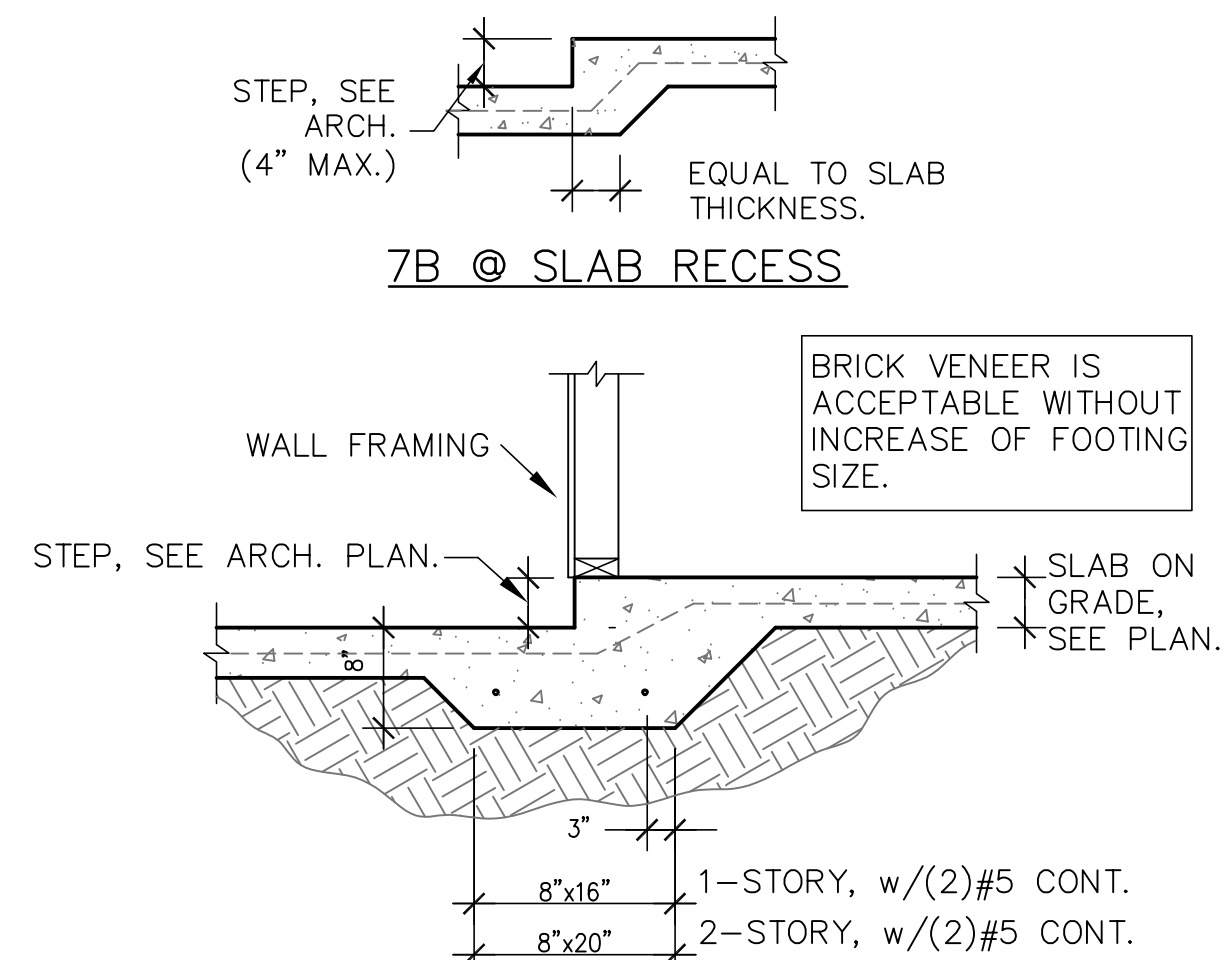
5 SAW CUT DETAIL

SCALE: 3/4" = 1'-0"



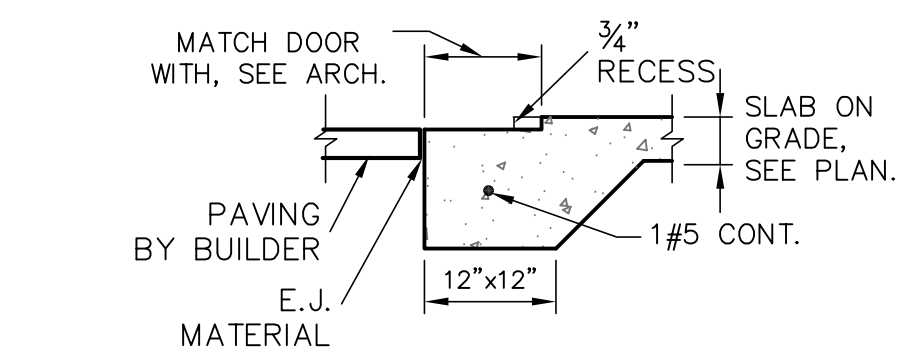
6 BEARING AT INTERIOR

SCALE: 3/4" = 1'-0"

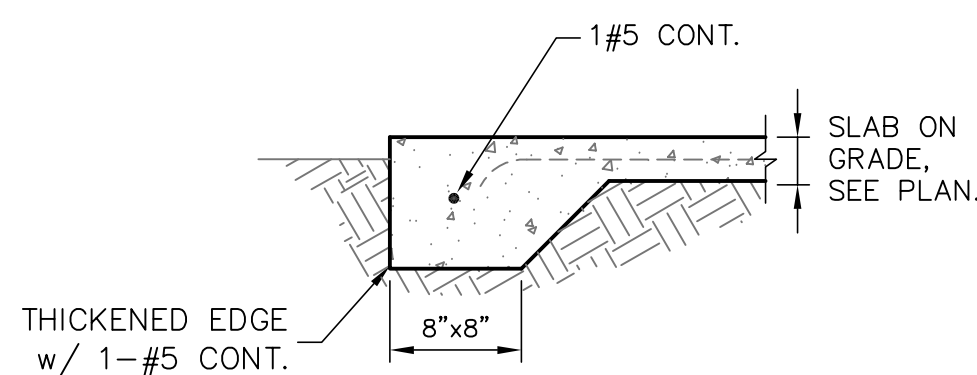


7 MONO. FOOTING AT STEP-DOWN

SCALE: 3/4" = 1'-0"



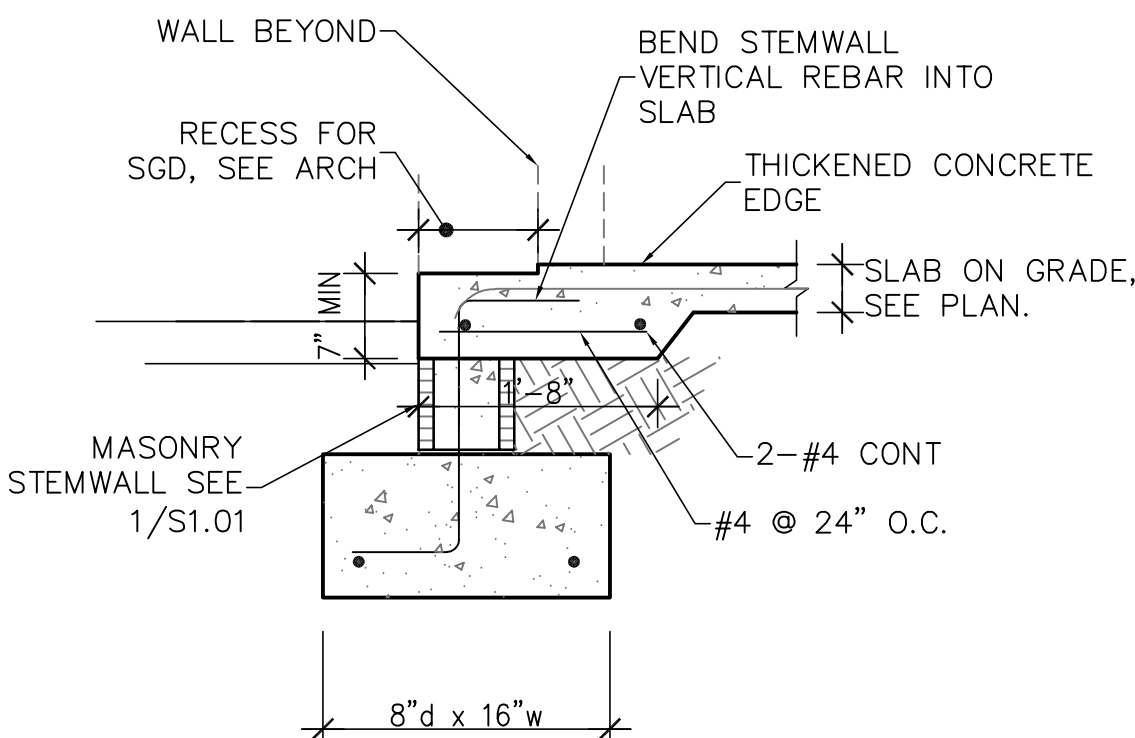
AT GARAGES



AT PORCHES

8 THICKENED SLAB

SCALE: 3/4" = 1'-0"

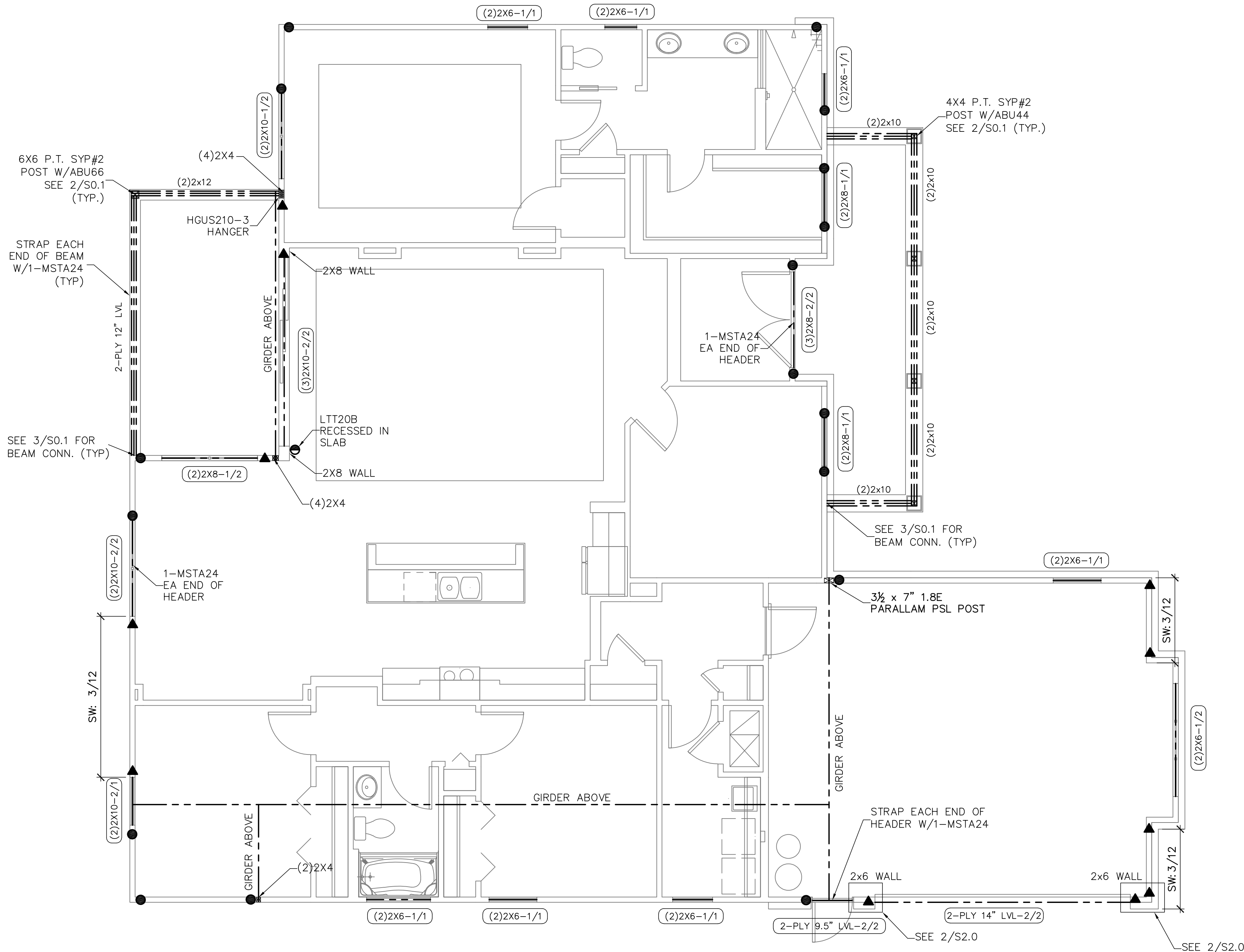


9 STEMWALL FOOTING AT SLIDER

SCALE: 3/4" = 1'-0"

ISSUE	DATE
PERMIT	05.01.20

REVISIONS	DATE



FIRST FLOOR FRAMING PLAN
SCALE: 1/4" = 1'-0"

SYMBOLS LEGEND

	DESIGNATES OSB SHEARWALL. THE HIDDEN LINE DESIGNATES SIDE OF WALL. THE SHEARWALL SHEATHING TO BE APPLIED. 8d @ 8" DESIGNATES 8d COMMONS @ 3" O.C. EDGE & 8" O.C. "IN THE FIELD"
	DESIGNATES THE HEADER SIZE, NUMBER OF PLYS & JACK/KING STUDS NEEDED FOR SUPPORT HEADER.
	BEAM OR TRUSS, SEE PLAN

ANCHOR LEGEND

	3/8" A307 DIAMETER FULL HEIGHT THREADED ROD, SEE DETAIL 12/SO.1
	3/8" A307 DIAMETER FULL HEIGHT THREADED ROD, SEE DETAIL 12/SO.1
	3/8" A307 DIAMETER THREADED ROD TERMINATES AT FIRST FLOOR TOP PLATE, SEE DETAIL 12/SO.1
	3/8" A307 DIAMETER THREADED ROD TERMINATES AT FIRST FLOOR TOP PLATE, SEE DETAIL 12/SO.1
	SIMPSON HTTS SEE DETAIL 15/SO.1
	SIMPSON DT122 SEE DETAIL 15/SO.1
	SIMPSON LT120B SEE DETAIL 15/SO.1

WALL STUD SCHEDULE

LOCATION	PLATE HEIGHT	STUD SIZE & SPACING
EXTERIOR	8'-1" MAX	2x4 SPF#2 @ 16" O.C.
EXTERIOR	10'-1" MAX	2x6 SPF#2 @ 16" O.C. OR 2x4 SPF#2 @ 12" O.C.
EXTERIOR	10'-1" TO 14'-0"	2x6 SPF#2 @ 16" O.C.
INTERIOR	10'-0" MAX	2x4 SPF#2 @ 16" O.C.
INTERIOR	12'-0" MAX	2x6 SPF#2 @ 16" O.C. OR 2x4 SPF#2 @ 12" O.C.

STUD NOTES

- 1.) WALL STUDS SPECIFIED ON PLAN SUPERSEDE THIS TABLE
- 2.) MINIMUM STUD SIZE AND SPACING ARE SHOWN. CONTRACTOR MAY INCREASE STUD SIZE TO MEET ARCHITECTURAL REQUIREMENTS.
- 3.) SPF DENOTES SPRUCE PINE FIR. SYP DENOTES SOUTHERN YELLOW PINE.
- 4.) USE SYP#2 FOR ALL TOP PLATES AND SOLE PLATES.
- 5.) FASTEN BOTTOM PLATE OF INTERIOR LOAD BEARING WALLS TO CONCRETE SLAB w/16d MASONRY CUT NAILS @ 16" O.C. MINIMUM. SEE 3/SO.0 FOR ADDITIONAL ANCHORS AT SHEARWALLS

COMBINED USE PANEL NOTES

1. EXTERIOR WALL SHEATHING SHALL BE CONTINUOUS FROM BOTTOM PLATE TO UPPER MOST TOP PLATE. SEE DETAIL 1/SO.1 FOR SHEATHING SPLICE LOCATIONS FOR MULTI STORY CONDITIONS
2. SEE SHEET SO.0 FOR WALL SHEATHING SPECIFICATIONS.
3. UPPER MOST TOP PLATE SUPPORTING ROOF MEMBERS SHALL BE STRAPPED AS SHOWN IN DETAIL 1/SO.0
4. INSTALL SOLE PLATE ANCHORS PER DETAIL 3/SO.0

GENERAL NOTES

1. SEE DETAIL 2/SO.0 FOR WALL FRAMING DETAIL. SEE WALL STUD SCHEDULE THIS SHEET FOR STUD SIZES AND SPACING. AT GIRDERS AND BEAMS, PROVIDE STUDS BELOW TO MATCH BEAM/GIRDER PLIES.
2. SEE SHEET SO.0 FOR ROOF AND FLOOR SHEATHING SPECIFICATIONS.
3. WHERE FRAMING MEMBERS CONSIST OF MULTIPLE PLIES (BEAMS, HEADER, AND STUDS) FASTEN PLIES TOGETHER PER DETAIL 6/SO.0
4. INSTALL SOLE PLATE ANCHORS PER DETAIL 3/SO.0
5. AT SHEARWALLS, PROVIDE DIAPHRAGM ATTACHMENT PER DETAIL 5/SO.1
6. FOR ATTACHMENT OF EXTERIOR WALLS THAT TERMINATE BETWEEN TRUSSES, SEE 5A/SO.1
7. AT PORCHES, SEE DETAIL 2/SO.1 FOR FRAMING AND HOLD DOWNS

SOLE PLATE ANCHOR SPACING SCHD

ALL EXTERIOR WALL UNLESS OTHER NOTED	42" O.C.
SHEARWALLS (SW 8d@3"/6")	24" O.C.
SOLE PLT @ #	WHEN NOTED ON PLAN SEE NOTE 2

1. INSTALL SOLE PLATE ANCHORS PER DETAIL 3/SO.0
2. ANCHOR SPACING SHALL BE AS NOTED. FOR EXAMPLE - SOLE PLT @ 36" = 36" ON-CENTER SPACING

SABO
STRUCTURAL
ENGINEERING
CA#32529
235 9TH AVE N
JAX BEACH, FL 32250
904-712-5750
CHRIS@SABOENG.COM



05.01.20
Christopher J Sabourin PE
FL PE #71461

PLAN NAME
INVENTORY HOMES
SSE No.
B7EC-20-0108

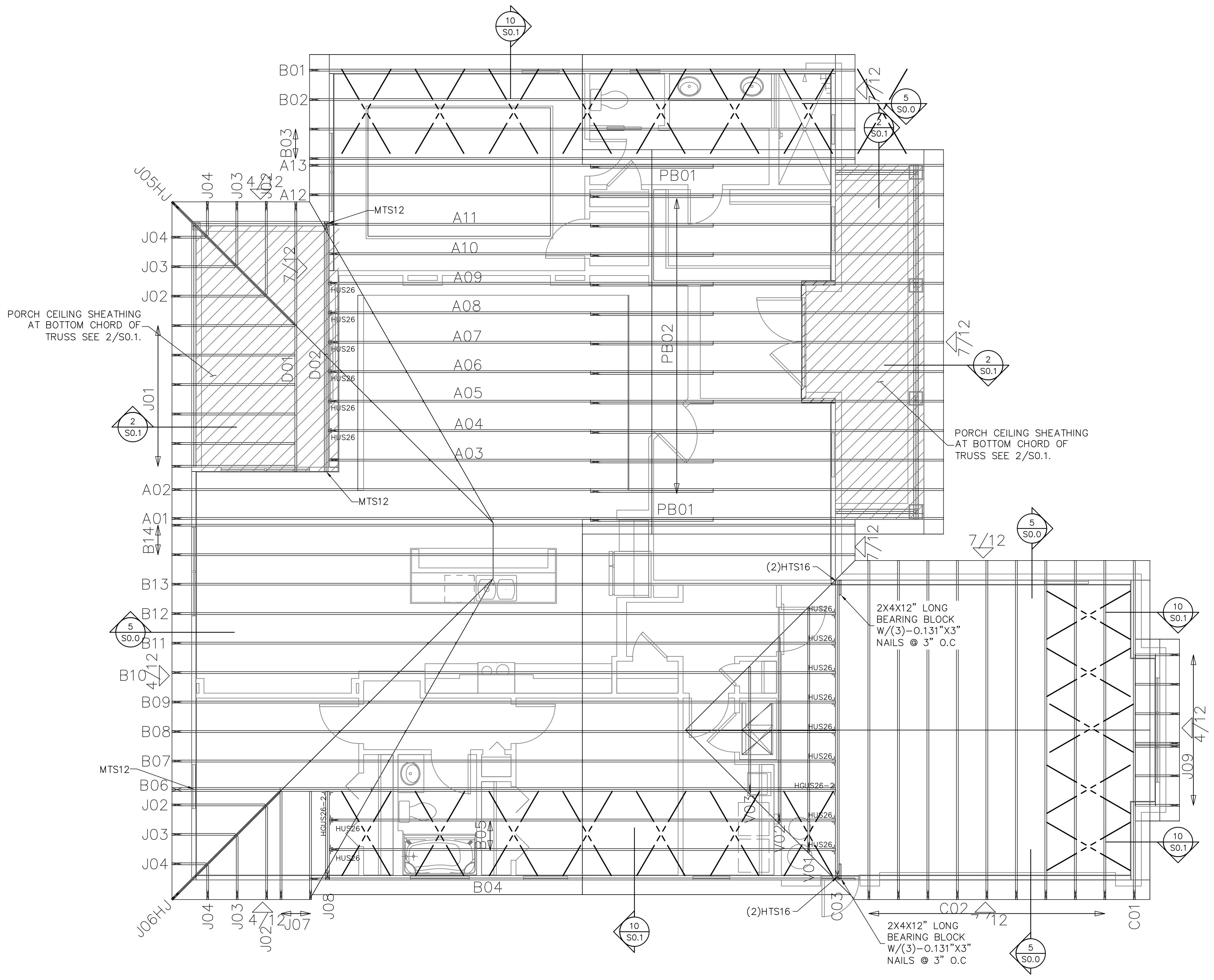
ISSUE	DATE
PERMIT	05.01.20
REVISIONS	DATE

BRYAN ZECHER HOMES, INC
STRUCTURAL ENGINEERING FOR
THE INVENTORY HOME

FIELD ALTERATION
CONTRACTOR SHALL CONTACT CHRISTOPHER SABOURIN PE PRIOR TO MAKING ANY STRUCTURAL FIELD MODIFICATIONS WHICH MAY VARY FROM THE INTENT OF THE ORIGINAL CONSTRUCTION DOCUMENTS. ANY FIELD ALTERATIONS MADE PRIOR TO BEING APPROVED BY CHRISTOPHER SABOURIN MAY RESULT IN ADDITIONAL ENGINEERING OR INSPECTION FEES.

SCALING
DO NOT SCALE DIMENSIONS FROM THESE DRAWINGS. IF A DIMENSION IS UNCLEAR REFER TO THE ARCHITECTURAL DRAWINGS OR CONTACT THE E.O.M.

FIRST FLOOR
FRAMING
PLAN



TRUSS / ROOF RAFTER NOTES: STRAPPING NOTES

FASTEN TRUSSES AND ROOF RAFTERS TO BEARING WITH 2-12D TOENAILS & 1-SIMPSON SDWC15600 SCREWS UNLESS OTHERWISE NOTED

ROOF TRUSS PLACEMENT PLAN

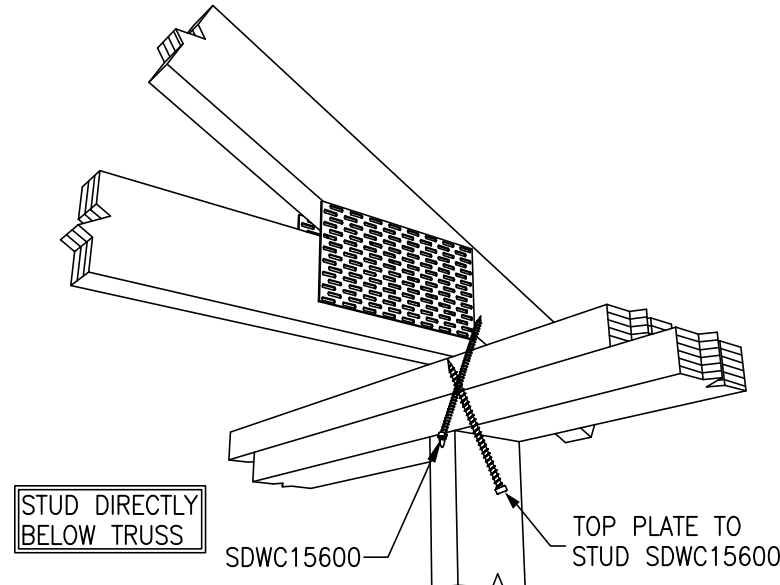
SCALE: 1/4" = 1'-0"

SYMBOLS LEGEND

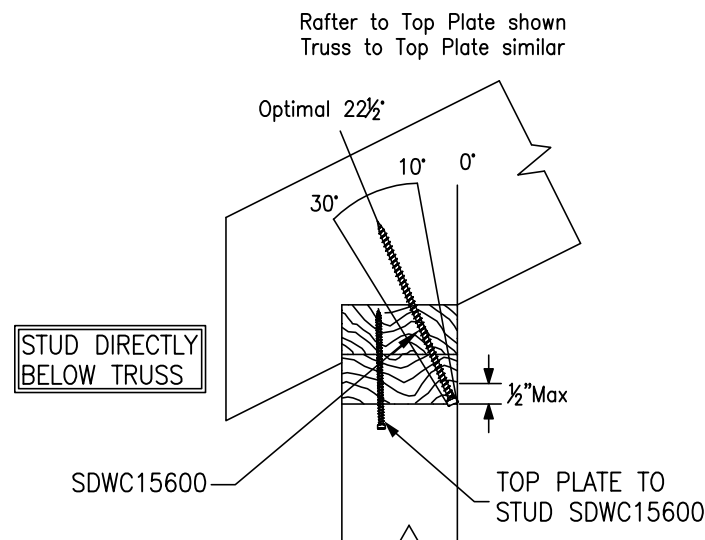
HTS16 DESIGNATES UPLIFT CONNECTION.

- FRAMING PLAN NOTES:
1. FOR TYPICAL ROOF SHEATHING AND FRAMING, SEE SHEET S0.0.
 2. FOR SPECIFIC UPLIFT CONNECTORS, SEE PLAN, MIN. (3)SDWC CONNECTOR.
 3. FOR GENERAL DESIGN SPECIFICATIONS SEE SHEET S0.0.
 4. WHEN USING (2)H25T CLIPS ON 1 1/2" WIDE LUMBER, PLACE CLIPS DIAGONALLY ACROSS DOUBLE TOP PLATE FROM EACH OTHER.

TRUSS FASTENING DETAILS

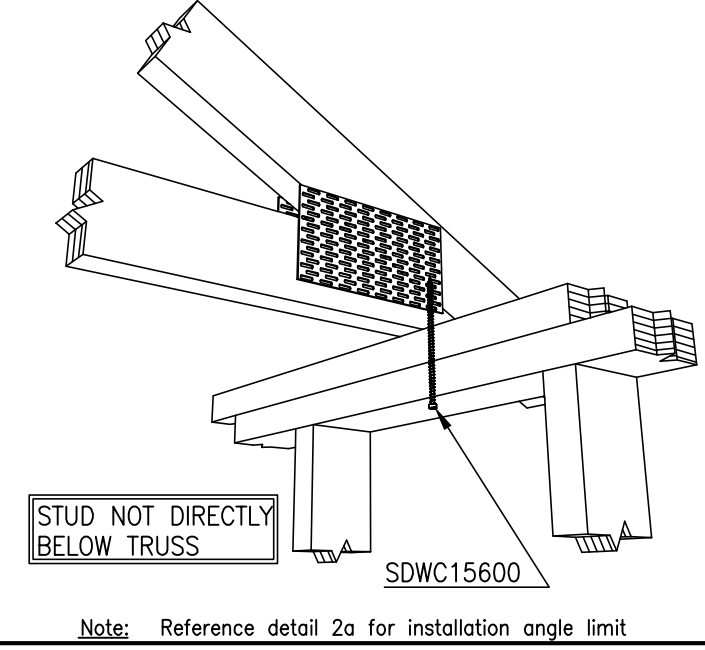


TRUSS TIE DOWN WITH SIMPSON SDWC



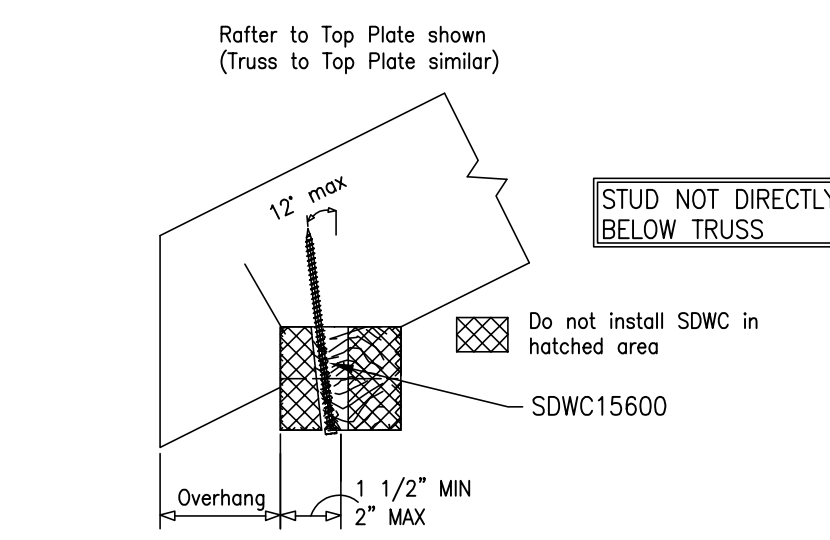
Note: 1. Sloped-roof rafters may be sloped up to and including a 12:12 pitch and must be "birds-mouth" cut.
2. Reference detail 4 for installation instructions.

SIMPSON SDWC INSTALLATION RANGE

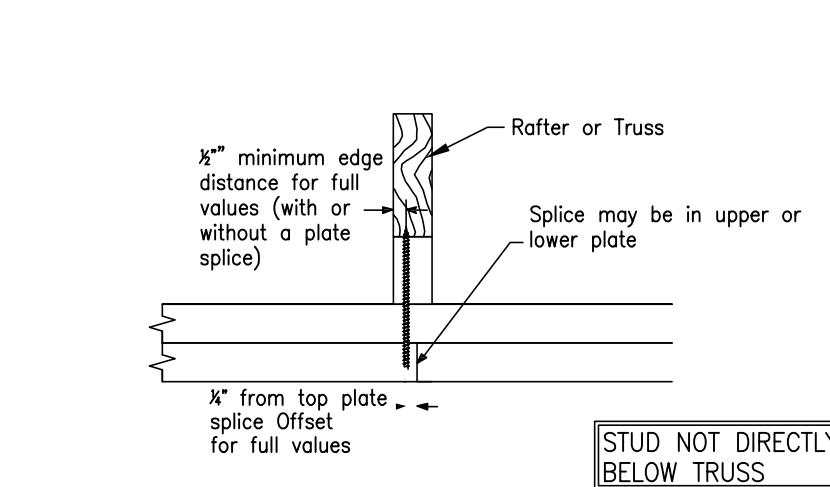


Note: Reference detail 2a for installation angle limit

SDWC INSTALLATION



SDWC INSTALLATION RANGE



SDWC AT TOP PLATE SPLICE

SABO
STRUCTURAL
ENGINEERING
CA#32529
235 9TH AVE N
JAX BEACH, FL 32250
904-712-5750
CHRIS@SABOENG.COM



05.01.20
Christopher J Sabourin PE
FL PE #71461

PLAN NAME
INVENTORY HOMES
SSE No.
BZEC-20-0108

ISSUE	DATE
PERMIT	05.01.20

REVISIONS	DATE

BRYAN ZECHER HOMES, INC
STRUCTURAL ENGINEERING FOR
THE INVENTORY HOME

FIELD ALTERATION

CONTRACTOR SHALL CONTACT CHRISTOPHER SABOURIN PE PRIOR TO MAKING ANY STRUCTURAL FIELD MODIFICATIONS WHICH MAY VARY FROM THE INTENT OF THE ORIGINAL CONSTRUCTION DOCUMENTS. ANY FIELD ALTERATIONS MADE PRIOR TO BEING APPROVED BY CHRISTOPHER SABOURIN MAY RESULT IN ADDITIONAL ENGINEERING OR INSPECTION FEES.

SCALING

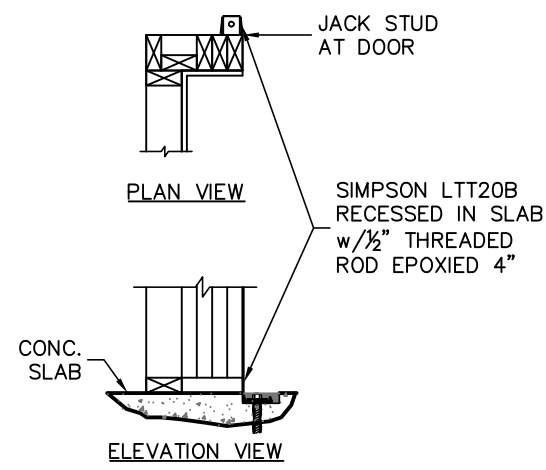
DO NOT SCALE DIMENSIONS FROM THESE DRAWINGS. IF A DIMENSION IS UNCLEAR REFER TO THE ARCHITECTURAL DRAWINGS OR CONTACT THE E.O.M.

ROOF TRUSS
PLACEMENT
PLAN

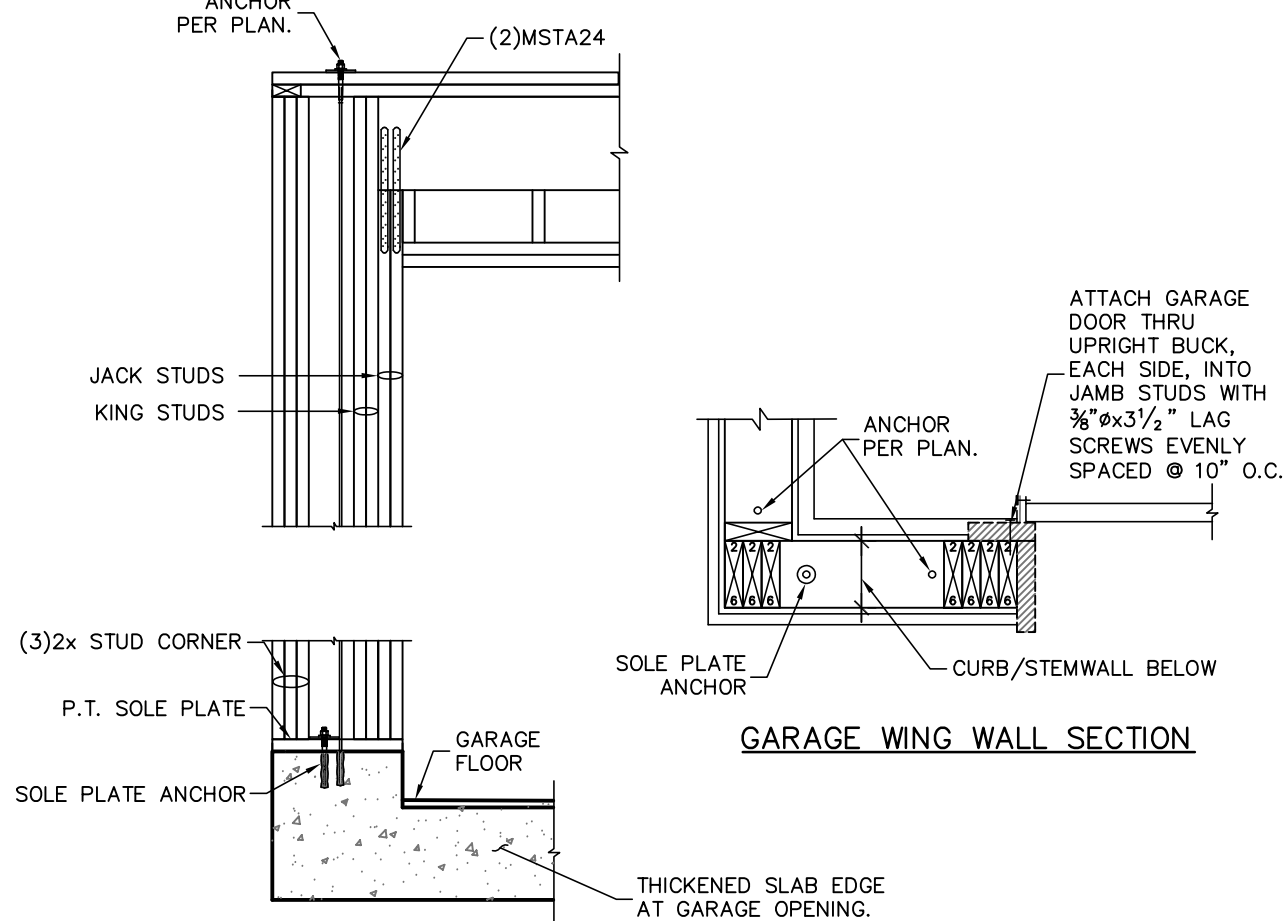
SHEET

S1.2

SHEET 6 OF 7

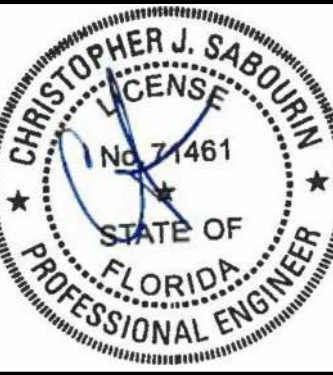


DOOR JAMB FASTENING
THIS DETAIL ONLY APPLIES WHEN NOTED ON PLAN



TYPICAL GARAGE HEADER/JACK CONNECTION
SCALE: 3/4" = 1'-0"

SABO
STRUCTURAL
ENGINEERING
CA#32529
235 9TH AVE N
JAX BEACH, FL 32250
904-712-5750
CHRIS@SABOENG.COM



05.01.20
Christopher J Sabourin PE
FL PE#71461

PLAN NAME
INVENTORY HOMES
SSE No.
BZEC-20-0108

ISSUE	DATE
PERMIT	05.01.20

REVISIONS	DATE

BRYAN ZECHER HOMES, INC
STRUCTURAL ENGINEERING FOR
THE INVENTORY HOME

FIELD ALTERATION
CONTRACTOR SHALL CONTACT
CHRISTOPHER SABOURIN PE PRIOR TO
MAKING ANY STRUCTURAL FIELD
MODIFICATIONS WHICH MAY VARY
FROM THE INTENT OF THE ORIGINAL
CONSTRUCTION DOCUMENTS. ANY
FIELD ALTERATIONS MADE PRIOR TO
BEING APPROVED BY CHRISTOPHER
SABOURIN MAY RESULT IN ADDITIONAL
ENGINEERING OR INSPECTION FEES.

SCALING
DO NOT SCALE DIMENSIONS FROM
THESE DRAWINGS. IF A DIMENSION IS
UNCLEAR REFER TO THE
ARCHITECTURAL DRAWINGS OR
CONTACT THE E.O.R.

MISC
DETAILS