

FLORIDA DEPARTMENT OF  
**Business & Professional Regulation**



**Product Approval**  
USER : Public User

[BCIS Home](#) | [Log In](#) | [User Registration](#) | [Hot Topics](#) | [Submit Surcharge](#) | [Stats & Facts](#) | [Publications](#) | [Contact Us](#) | [BCIS Site Map](#) | [Links](#) | [Search](#)



► OFFICE OF THE  
SECRETARY

[Product Approval Menu](#) > [Product or Application Search](#) > [Application List](#) > [Application Detail](#)

FL #  
Application Type  
Code Version  
Application Status

FL19562-R9  
Revision  
2023  
Approved

Comments  
Archived

☐

Product Manufacturer  
Address/Phone/Email

Andersen Corporation  
100 Fourth Avenue North  
Bayport, MN 55003  
(651) 264-5308  
alan.barstad@AndersenCorp.com

Authorized Signature

Alan Barstad  
alan.barstad@AndersenCorp.com

Technical Representative  
Address/Phone/Email

Alan Barstad  
100 Fourth Avenue North  
Bayport, MN 55003  
(651) 264-5308  
abarstad@andersencorp.com

Quality Assurance Representative  
Address/Phone/Email

Alan Barstad  
100 Fourth Avenue North  
Bayport, MN 55003  
(651) 264-5308  
abarstad@andersencorp.com

Windows  
Fixed

Category  
Subcategory

Evaluation Report from a Florida Registered Architect or a Licensed Florida Professional Engineer  
☐ Evaluation Report - Hardcopy Received

Compliance Method

Florida Engineer or Architect Name who developed the Evaluation Report

Hermes F. Norero, P.E.

Florida License

PE-73778

Quality Assurance Entity

Window and Door Manufacturers Association-QA

Quality Assurance Contract Expiration Date

12/01/2030

Validated By

Zachary R. Priest, P.E.

☒ Validation Checklist - Hardcopy Received

Certificate of Independence

[FL19562\\_R9\\_COI\\_COI Andersen SS 2021-10-18.pdf](#)

Referenced Standard and Year (of Standard)

Standard	Year
AAMA/WDMA/CSA 101/I.S. 2/A440	2011
AAMA/WDMA/CSA 101/I.S. 2/A440	2017

ASTM E1886	2013
ASTM E1996	2017
TAS 201	1994
TAS 202	1994
TAS 203	1994

Equivalence of Product Standards  
Certified By

Sections from the Code

Product Approval Method	Method 1 Option D
Date Submitted	12/14/2023
Date Validated	12/27/2023
Date Pending FBC Approval	01/02/2024
Date Approved	02/13/2024

Summary of Products

FL #	Model, Number or Name	Description
19562.1	Renewal by Andersen Casement Window - Fixed (HVHZ) (Impact)	Renewal by Andersen Casement Window - Fixed (HVHZ) (Impact)
	<b>Limits of Use</b> <b>Approved for use in HVHZ:</b> Yes <b>Approved for use outside HVHZ:</b> Yes <b>Impact Resistant:</b> Yes <b>Design Pressure:</b> +60/-70 <b>Other:</b> See Installation Details and Evaluation Report for allowable sizes, configurations, installation requirements and limits of use.	<b>Installation Instructions</b> <a href="#">FL19562_R9_II_AWD321_SS_2022-12-19.pdf</a> Verified By: Hermes F. Norero, P.E. Florida P.E. 73778 Created by Independent Third Party: Yes <b>Evaluation Reports</b> <a href="#">FL19562_R9_AE_PER8118_SS_2022-10-10.pdf</a> Created by Independent Third Party: Yes
19562.2	Renewal by Andersen Casement Window - Fixed (Non-HVHZ)(Non-Impact)	Renewal by Andersen Casement Window - Fixed (Non-HVHZ) (Non-Impact)
	<b>Limits of Use</b> <b>Approved for use in HVHZ:</b> No <b>Approved for use outside HVHZ:</b> Yes <b>Impact Resistant:</b> No <b>Design Pressure:</b> N/A <b>Other:</b> See Installation Instructions and Evaluation report for allowable design pressures, sizes, installation requirements and limits of use.	<b>Installation Instructions</b> <a href="#">FL19562_R9_II_AWD094_SS_2020-10-11.pdf</a> Verified By: Hermes F. Norero, P.E. FL PE No. 73778 Created by Independent Third Party: Yes <b>Evaluation Reports</b> <a href="#">FL19562_R9_AE_PER6698_SS_2020-10-11.pdf</a> Created by Independent Third Party: Yes
19562.3	Renewal by Andersen Fixed Window - (HVHZ)(Impact)	Renewal by Andersen Fixed Window - (HVHZ)(Impact)
	<b>Limits of Use</b> <b>Approved for use in HVHZ:</b> Yes <b>Approved for use outside HVHZ:</b> Yes <b>Impact Resistant:</b> Yes <b>Design Pressure:</b> N/A <b>Other:</b> See Installation Instructions and Evaluation report for allowable design pressures, sizes, installation requirements and limits of use.	<b>Installation Instructions</b> <a href="#">FL19562_R9_II_AWD292_SS_2021-06-15.pdf</a> Verified By: Hermes F. Norero, P.E. Florida P.E. 73778 Created by Independent Third Party: Yes <b>Evaluation Reports</b> <a href="#">FL19562_R9_AE_PER7621_SS_2021-06-15.pdf</a> Created by Independent Third Party: Yes
19562.4	Renewal by Andersen Fixed Window - Full Frame (Non-HVHZ)(Non-Impact)	Renewal by Andersen Fixed Window - Full Frame (Non-HVHZ) (Non-Impact)
	<b>Limits of Use</b> <b>Approved for use in HVHZ:</b> No <b>Approved for use outside HVHZ:</b> Yes	<b>Installation Instructions</b> <a href="#">FL19562_R9_II_AWD092_SS_2020-10-11.pdf</a> Verified By: Hermes F. Norero, P.E. FL PE No. 73778

<b>Impact Resistant: No</b> <b>Design Pressure: N/A</b> <b>Other:</b> See Installation Instructions and Evaluation report for allowable design pressures, sizes, installation requirements and limits of use.		Created by Independent Third Party: Yes <b>Evaluation Reports</b> <a href="#">FL19562_R9_AE_PER6696_SS_2020-10-11.pdf</a> Created by Independent Third Party: Yes
19562.5	Renewal by Andersen Fixed Window - Insert Frame (Non-HVHZ)(Non-Impact)	Renewal by Andersen Fixed Window - Insert Frame (Non-HVHZ)(Non-Impact)
<b>Limits of Use</b> <b>Approved for use in HVHZ:</b> No <b>Approved for use outside HVHZ:</b> Yes <b>Impact Resistant:</b> No <b>Design Pressure:</b> N/A <b>Other:</b> See Installation Instructions and Evaluation report for allowable design pressures, sizes, installation requirements and limits of use.		<b>Installation Instructions</b> <a href="#">FL19562_R9_II_AWD091_SS_2020-10-11.pdf</a> Verified By: Hermes F. Norero, P.E., FL PE No. 73778 Created by Independent Third Party: Yes <b>Evaluation Reports</b> <a href="#">FL19562_R9_AE_PER6699_SS_2020-10-11.pdf</a> Created by Independent Third Party: Yes
19562.6	Renewal by Andersen Fixed Window - Universal Frame (Non-HVHZ)(Non-Impact)	Renewal by Andersen Fixed Window - Universal Frame (Non-HVHZ)(Non-Impact)
<b>Limits of Use</b> <b>Approved for use in HVHZ:</b> No <b>Approved for use outside HVHZ:</b> Yes <b>Impact Resistant:</b> No <b>Design Pressure:</b> N/A <b>Other:</b> See Installation Instructions and Evaluation report for allowable design pressures, sizes, installation requirements and limits of use.		<b>Installation Instructions</b> <a href="#">FL19562_R9_II_AWD244_SS_2023-11-28.pdf</a> Verified By: Hermes F. Norero, P.E., FL PE No. 73778 Created by Independent Third Party: Yes <b>Evaluation Reports</b> <a href="#">FL19562_R9_AE_PER8980_SS_2023-11-28.pdf</a> Created by Independent Third Party: Yes

[Back](#)

[Next](#)

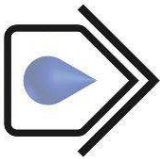
Contact Us :: 2601 Blair Stone Road, Tallahassee FL 32399 Phone: 850-487-1824

The State of Florida is an AA/EEO employer. [Copyright 2007-2013 State of Florida.](#) :: [Privacy Statement](#) :: [Accessibility Statement](#) :: [Refund Statement](#)

Under Florida law, email addresses are public records. If you do not want your e-mail address released in response to a public-records request, do not send electronic mail to this entity. Instead, contact the office by phone or by traditional mail. If you have any questions, please contact 850.487.1395. \*Pursuant to Section 455.275(1), Florida Statutes, effective October 1, 2012, licensees licensed under Chapter 455, F.S., must provide the Department with an email address if they have one. The emails provided may be used for official communication with the licensee. However email addresses are public record. If you do not wish to supply a personal address, please provide the Department with an email address which can be made available to the public. To determine if you are a licensee under Chapter 455, F.S., please click [here](#).

**Product Approval Accepts:**





b. HxH mx 5# 16

w1 6 W x B  
r V b V 5S4, L0

u40 shpV Vg V g h  
w uu0  
pV Vg V em uuvt  
4, th44Dt L0 RC  
4, thltth Lu0 mT  
V @ h

1 W 5

W F  
w - h A-  
T#TAg(, RT#TAM1wF2R

- 1 w

-)l-)cvuit

5 T ei ivi

F - b F

M Y c-x W W R  
F Y h  
6 -F Y - h

1 y 5 w - h A-  
M Y T#TAg(, RT#TAM1wF2R  
1 x y 6 H H 1gF Swh xfvT

1 Y

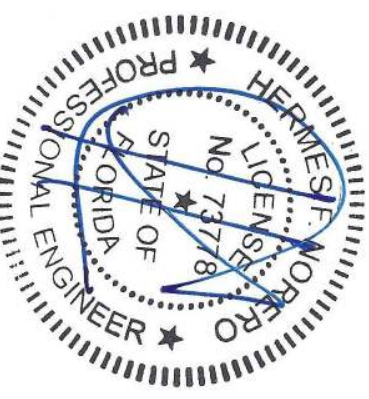
w F  
cff - w T  
b SMT uuf fo

1 Y  
( -eT S1Aw  
m VR V s 8 LuLL0  
pV Sv4lvtlSvSv

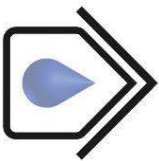
r 5

s V V W RV d-t

Digitally signed by Hermes F Noreiro  
Reason: I am approving this document  
Date: 2020.10.11 18:23:45 +0200'



C m# eRts h  
m VRts h# hLuLL0



# b. НхН mx5#16

# N rN r N

w1 6 W x B  
r V b V 5S4, L0

M Y W F

1 F Y )

1 6 Æ Y m )

F M Y wV R b V 2 adra n

1 T Y 5 w - h A- -  
T # T A g ( , R T # T A M 1 w F 2 R

6 Y x VR s V V W C nh# eRtsham 8 LuLL0n w  
F V 2 d wV m VR b Vem Vp V  
g V R V W V cm Vg r h

C nh# eRtsh V V V V V  
V V V h V V V

x V V V r m Vg  
r h V V V

w f V V f wh xfvte V V C nh# eRtsham 8 LuLL0n  
VV h

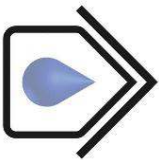
) . Y dh x V V V V V r m Vg r e  
the “High Velocity Hurricane Zone” (HVHZ).

Sh R V V V V V V h b  
V V V V V

uh ) V V V m Vg r V \_\_\_\_ V V V  
r V df r h

th w V V V f V V f wh xfvte  
V V V h  
, h w f V V f wh xfvte V V h

C nh# eRtsh  
m VRtsh# hLuLL0  
RV S t



**b. HxH mx 5# 16**

#  
NNNN

	x	v	v	v	v	v	v	v	v
w	r	m	v <sub>g</sub>	r	v	v	v	v	v
y	v	v	v	v	v	v	v	v	v
9	M	w	arg /	v	v	851 MbS, d, rh	h	x	v

1	6	y	x	v	v	v	5
---	---	---	---	---	---	---	---

- `bb2 bl) p2 bl r wb dvdI fmsI btt vadd`

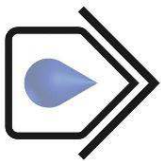
[illegible]

Sh	1	V	b	V		w
h				x	M	
argr /	V	V			851 MbS, d, n	

H
y
w v
f v h
f
aah xfvtn
v
e
e
V V V

[illegible]

C	nm#	erIs#
m	VrIs#	hLlLO
	RV	u t



# b. НХН mx 5#16

# N rN r N

w1 6 W x B  
r v b v 5S4, L0

w 2 6 y

( v v v v v v e v e  
b r v v v m v g r h  
v v a r b

dn bb2 bl) p2 blrwb dvdl ffwSl bttvao0

r v u, m Vg r v  
v v 5

1) bb2 bl) p2 blrwb dvdl ffwSl bttvadd

b v v e v v v  
v v V hb v V V  
v h

C mh# eRsh  
m vRsh# hLULLO  
RV t t

03/20/2016 1:17 PM

#### INSTALLATION NOTES:

1. INSTALLATION CLIPS: ONE (1) INSTALLATION ANCHOR CLIP IS REQUIRED AT EACH ANCHOR LOCATION SHOWN, EACH CLIP IS TO USE TWO (2) INSTALLATION ANCHORS.
2. THROUGH FRAME AND NAIL FIN: ONE (1) INSTALLATION ANCHOR IS REQUIRED AT EACH ANCHOR LOCATION SHOWN.
3. INSTALL INDIVIDUAL INSTALLATION ANCHORS WITHIN A TOLERANCE OF  $\pm 1/2$  INCH OF THE DEPICTED LOCATION IN THE ANCHOR LAYOUT DETAIL (I.E., WITHOUT CONSIDERATION OF TOLERANCES). TOLERANCES ARE NOT CUMULATIVE FROM ONE INSTALLATION ANCHOR TO THE NEXT.
4. **INSTALLATION CLIP:** FOR INSTALLATION THROUGH 1X BUCK TO CONCRETE/MASONRY, OR DIRECTLY INTO CONCRETE/MASONRY, USE TWO (2)  $3/16$  INCH HWH ITW TAPCON PER INSTALLATION CLIP OF SUFFICIENT LENGTH TO ACHIEVE  $1 1/4$  INCH MINIMUM EMBEDMENT AND SHALL MAINTAIN MINIMUM 2" EDGE DISTANCE.
5. **INSTALLATION CLIP:** FOR INSTALLATION INTO 2X BUCK USE TWO (2) #8 PAN HEAD WOOD SCREWS PER INSTALLATION CLIP OF SUFFICIENT LENGTH TO ACHIEVE  $1 1/2$  INCH MINIMUM EMBEDMENT INTO WOOD SUBSTRATE AND SHALL MAINTAIN MINIMUM  $3/4$ " EDGE DISTANCE.
6. **INSTALLATION CLIP:** FOR INSTALLATION THROUGH METAL STUD USE TWO (2) #8 HWH GRADE 5 SELF-DRILLING OR SELF-TAPPING SCREWS PER INSTALLATION CLIP OF SUFFICIENT LENGTH TO ACHIEVE 3 THREADS MINIMUM PENETRATION BEYOND METAL FRAME SUBSTRATE AND SHALL MAINTAIN MINIMUM  $3/4$ " EDGE DISTANCE.
7. **THROUGH FRAME:** FOR INSTALLATION INTO 2X BUCK USE #10 WOOD SCREWS OF SUFFICIENT LENGTH TO ACHIEVE  $1 1/2$  INCH MINIMUM EMBEDMENT INTO WOOD SUBSTRATE AND SHALL MAINTAIN MINIMUM  $3/4$ " EDGE DISTANCE.
8. **THROUGH FRAME:** FOR INSTALLATION INTO METAL SUBSTRATES USE #10 HWH GRADE 5 SELF-DRILLING OR SELF-TAPPING SCREWS OF SUFFICIENT LENGTH TO ACHIEVE 3 THREADS MINIMUM PENETRATION BEYOND METAL FRAME SUBSTRATE AND SHALL MAINTAIN MINIMUM  $3/4$ " EDGE DISTANCE.
9. **THROUGH FRAME:** FOR INSTALLATION THROUGH 1X BUCK TO CONCRETE/MASONRY, OR DIRECTLY INTO CONCRETE/MASONRY, USE ONE (1)  $3/16$  INCH ITW TAPCON OF SUFFICIENT LENGTH TO ACHIEVE  $1 1/4$  INCH MINIMUM EMBEDMENT AND SHALL MAINTAIN MINIMUM 2" EDGE DISTANCE.
10. **NAIL FIN:** FOR INSTALLATION INTO 2X BUCK USE #8 PAN HEAD WOOD SCREWS OF SUFFICIENT LENGTH TO ACHIEVE  $1 1/2$  INCH MINIMUM EMBEDMENT INTO WOOD SUBSTRATE AND SHALL MAINTAIN MINIMUM  $3/4$ " EDGE DISTANCE.
11. **NAIL FIN:** FOR INSTALLATION INTO METAL SUBSTRATES USE #8 HWH GRADE 5 SELF-DRILLING OR SELF-TAPPING SCREWS OF SUFFICIENT LENGTH TO ACHIEVE 3 THREADS MINIMUM PENETRATION BEYOND METAL FRAME SUBSTRATE AND SHALL MAINTAIN MINIMUM  $3/4$ " EDGE DISTANCE.
12. MINIMUM EMBEDMENT AND EDGE DISTANCE EXCLUDE WALL FINISHES, INCLUDING BUT NOT LIMITED TO STUCCO, FOAM, BRICK VENEER, AND SIDING.
13. INSTALLATION ANCHORS AND ASSOCIATED HARDWARE MUST BE MADE OF CORROSION RESISTANT MATERIAL OR HAVE A CORROSION RESISTANT COATING.
14. FOR HOLLOW BLOCK AND GROUT FILLED BLOCK, DO NOT INSTALL INSTALLATION ANCHORS INTO MORTAR JOINTS. EDGE DISTANCE IS MEASURED FROM FREE EDGE OF BLOCK OR EDGE OF MORTAR JOINT INTO FACE SHELL OF BLOCK.
15. INSTALLATION ANCHORS SHALL BE INSTALLED IN ACCORDANCE WITH ANCHOR MANUFACTURER'S INSTALLATION INSTRUCTIONS, AND ANCHORS SHALL NOT BE USED IN SUBSTRATES WITH STRENGTHS LESS THAN THE MINIMUM STRENGTH SPECIFIED BY THE ANCHOR MANUFACTURER.
16. INSTALLATION ANCHOR CAPACITIES FOR PRODUCTS HEREIN ARE BASED ON SUBSTRATE MATERIALS WITH THE FOLLOWING PROPERTIES:
  - A. WOOD - MINIMUM SPECIFIC GRAVITY OF 0.55.
  - B. CONCRETE - MINIMUM COMPRESSIVE STRENGTH OF 3000 PSI.
  - C. GROUT-FILLED CMU - UNIT STRENGTH CONFORMS TO ASTM C-90 WITH MINIMUM COMPRESSIVE STRENGTH OF 2000 PSI AND GROUT CONFORMS TO ASTM C 476, MINIMUM GROUT COMPRESSIVE STRENGTH OF 2000 PSI.
  - D. HOLLOW BLOCK CMU - UNIT STRENGTH CONFORMS TO ASTM C-90 WITH MINIMUM COMPRESSIVE STRENGTH OF 2000 PSI.
  - E. STEEL - MINIMUM YIELD STRENGTH OF 33 KSI. MINIMUM WALL THICKNESS OF 48 MILS (18 GAUGE).
  - F. ALUMINUM - MINIMUM WALL THICKNESS OF  $1/8$ ", 6063-T5 ALLOY OR BETTER.

## ANDERSEN CORPORATION, INC

### RENEWAL BY ANDERSEN FIXED WINDOWS - FULL FRAME (NON-HVHZ)(NON-IMPACT)

#### GENERAL NOTES:

1. THE PRODUCT SHOWN HEREIN IS DESIGNED AND MANUFACTURED TO COMPLY WITH THE CURRENT EDITION FLORIDA BUILDING CODE, EXCLUDING HVHZ. THE PRODUCT HAS BEEN EVALUATED TO THE FOLLOWING:
  - AAMA/WDMA/CSA 101/S.2/A440-11
2. ADEQUACY OF THE EXISTING STRUCTURAL CONCRETE/MASONRY, 2X AND METAL STUD FRAMING AS A MAIN WIND FORCE RESISTING SYSTEM CAPABLE OF WITHSTANDING AND TRANSFERRING APPLIED PRODUCT LOADS TO THE FOUNDATION IS THE RESPONSIBILITY OF THE ENGINEER OR ARCHITECT OF RECORD FOR THE PROJECT OF INSTALLATION.
3. 1X AND 2X BUCKS (WHEN USED) SHALL BE DESIGNED AND ANCHORED TO PROPERLY TRANSFER ALL LOADS TO THE STRUCTURE. BUCK DESIGN AND INSTALLATION IS THE RESPONSIBILITY OF THE ENGINEER OR ARCHITECT OF RECORD FOR THE PROJECT OF INSTALLATION.
4. THE INSTALLATION DETAILS DESCRIBED HEREIN ARE GENERIC AND MAY NOT REFLECT ACTUAL CONDITIONS FOR A SPECIFIC SITE. IF SITE CONDITIONS CAUSE INSTALLATION TO DEVIATE FROM THE REQUIREMENTS DETAILED HEREIN, A LICENSED ENGINEER OR ARCHITECT SHALL PREPARE SITE SPECIFIC DOCUMENTS FOR USE WITH THIS DOCUMENT.
5. APPROVED IMPACT PROTECTIVE SYSTEM IS REQUIRED TO PROTECT THIS PRODUCT IN AREAS REQUIRING IMPACT RESISTANCE.
6. WINDOW FRAME MATERIAL: FIBREX® AND PVC.
7. GLASS MEETS THE REQUIREMENTS OF ASTM E1300. SEE GLAZING DETAILS ON SHEET 3.
8. DESIGNATIONS "X" AND "O" STAND FOR THE FOLLOWING:  
X: OPERABLE PANEL  
O: FIXED PANEL

TABLE OF CONTENTS	
SHEET	SHEET DESCRIPTION
1	GENERAL & INSTALLATION NOTES
2	ELEVATIONS & ANCHOR LAYOUTS
3	THROUGH FRAME & NAIL FIN INSTALLATION DETAILS & GLAZING DETAIL
4	NAIL FIN INSTALLATION DETAILS
5	CLIP INSTALLATION DETAILS
6	QUALIFIED SHAPES

DESIGN PRESSURE RATING			
SIZE	DESIGN PRESSURE (DP/PG)	INSTALLATION OPTIONS	INSTALLATION SUBSTRATES
48x48	+/- 50 PSF	Through Frame & Optional Nail Fin	Wood, Concrete/Masonry, Metal Stud
		Installation Clip	Wood, Concrete/Masonry, Metal Stud
84x84	+/- 35 PSF	Through Frame & Optional Nail Fin	Wood, Concrete/Masonry, Metal Stud
		Installation Clip	Wood, Concrete/Masonry, Metal Stud
84x84	+/- 50 PSF	Nail Fin Only	Wood or Metal Stud Only
		Through Frame & Nail Fin Required	Wood or Metal Stud Only
106x62	+/- 35 PSF	Installation Clip	Wood, Concrete/Masonry, Metal Stud
		Through Frame & Optional Nail Fin	Wood, Concrete/Masonry, Metal Stud
106x62	+/- 50 PSF	Nail Fin Only	Wood Or Metal Stud Only
		Through Frame & Nail Fin Required	Wood or Metal Stud Only
106x62	+/- 50 PSF	Installation Clip	Wood, Concrete/Masonry, Metal Stud
		Through Frame & Optional Nail Fin	Wood, Concrete/Masonry, Metal Stud



ANDERSEN  
1201 FOURTH AVE NORTH  
BAYPORT, MN 55003-1096

PH: (651) 264-5150 FX: (651) 264-5485

TITLE:  
RENEWAL BY ANDERSEN FIXED  
WINDOWS - FULL FRAME  
(NON-HVHZ)(NON-IMPACT)

GENERAL & INSTALLATION NOTES

PREPARED BY:

BUILDING DROPS, INC.

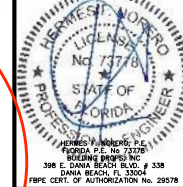
398 E. DANIA BEACH BLVD., STE. 338  
DANIA BEACH, FL 33004  
FAX: (954) 384-4728  
WEB: www.buildingdrops.com



REMARKS	BY	DATE
REV. FOR PG50 UNITS	MS	2.15.16
FBC UPDATE	SM	2.17.18
7TH FBC CODE CHANGE	SR	3.24.20

THE INSTALLATION DETAILS DESCRIBED HEREIN ARE GENERIC AND MAY NOT REFLECT ACTUAL CONDITIONS FOR A SPECIFIC SITE. IF SITE CONDITIONS CAUSE INSTALLATION TO DEVIATE FROM THE REQUIREMENTS DETAILED HEREIN, A LICENSED ENGINEER OR ARCHITECT SHALL PREPARE SITE SPECIFIC DOCUMENTS FOR USE WITH THIS DOCUMENT.

Digitally signed by Hermes F. Norero  
Reason: I am approving this document  
Date: 2020.03.11 18:30:26 -0200



FL #:

DATE: 12.17.15

DWG. BY: SM CHK. BY: MSS

SCALE: NTS

DWG. #: AWD092

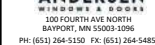
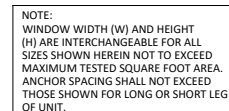
SHEET: 1 OF 6





**NOTES:**

- ALL TYPICAL SUBSTRATES & INSTALLATION METHODS SHOWN HEREIN MAY BE USED AT THE HEAD, JAMBS, OR SILL. ANCHOR EDGE DISTANCE AND EMBEDMENT SHALL BE AS SPECIFIED IN TYPICAL DETAILS. SEE INSTALLATION NOTES 4-11, SHEET 1, FOR ANCHOR SPECIFICATIONS FOR EACH INSTALLATION METHOD.



## ELEVATIONS & ANCHOR LAYOUTS



REMARKS	BY	DATE
REV.FOR PG50 UNITS	MS	2.15.16
FBC UPDATE	SM	12.17.18
7TH FBC CODE CHANGE	SR	3.24.20

THE INSTALLATION DETAILS DESCRIBED HEREIN ARE GENERIC AND MAY NOT REFLECT ACTUAL CONDITIONS FOR A SPECIFIC SITE. IF SITE CONDITIONS CAUSE INSTALLATION TO DEVIATE FROM THE REQUIREMENTS DETAILED HEREIN, A LICENSED ENGINEER OR ARCHITECT SHALL PREPARE SITE SPECIFIC DOCUMENTS FOR USE WITH THIS DOCUMENT.

FL #: **FI 19562**

DATE: 12.17.15

DWG. BY: <b>SM</b>	CHK. BY: <b>MSS</b>
-----------------------	------------------------

SCALE: NTS

DWG. #: AWD092

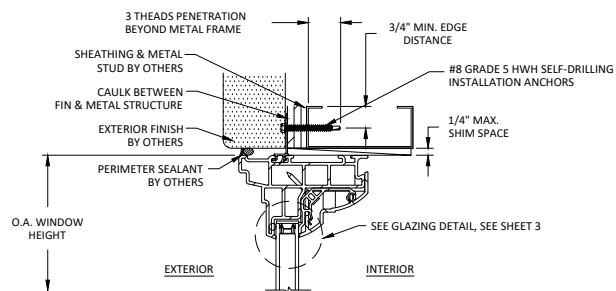
SHEET:

2

OF 6

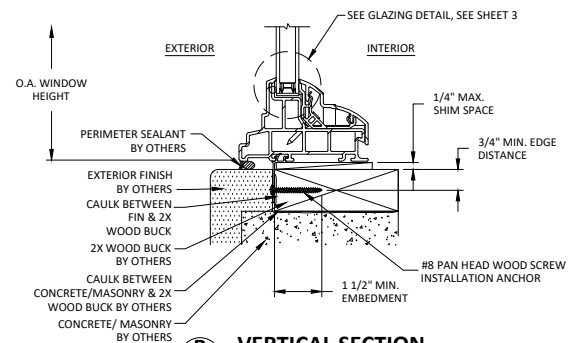


[projects/janderson/window/disc-20-0224-code-change-fisc-2020\(version7\)code-changes/f99562dwar?diff=99562\\_dwar%092.dwr](#)



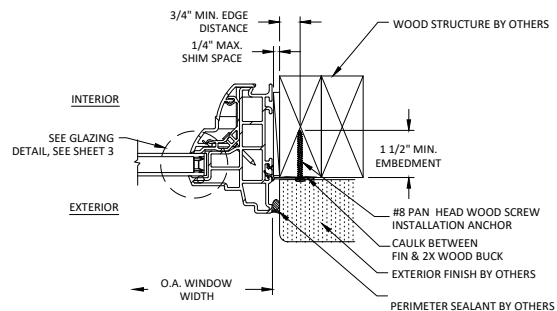
**A**  
**4** **VERTICAL SECTION**  
HEAD - METAL FRAME SUBSTRATE  
NAIL FIN

NAIL FIN/FLANGE IS REVERSIBLE, SEE ORIENTATION DIFFERENCE IN DETAIL A AND B



**B**  
**4** **VERTICAL SECTION**  
SILL - 2X WOOD BUCK  
NAIL FIN

SILL - 2X WOOD BUCK  
NAIL FIN



**C**  
**4** **HORIZONTAL SECTION**  
JAMB - WOOD BUCK  
NAIL FIN

JAMB - WOOD BUCK  
NAIL FIN



100 FOURTH AVE NORTH  
BAYPORT, MN 55003-1096  
PH: (651) 264-5150 FX: (651) 264-5485

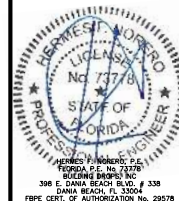
**TITLE:**  
**RENEWAL BY ANDERSEN FIXED**  
**WINDOWS - FULL FRAME**  
**(NON-HVHZ)/(NON-IMPACT)**

**PREPARED BY:**

 **BUILDING DROPS, INC.**  
3958 E. DANIA BEACH BLVD., STE. 338  
DANIA BEACH, FL 33004  
PH: (954) 399-8478  
FAX: (954) 474-4738  
WEB: [www.buildingdrops.com](http://www.buildingdrops.com)

REMARKS	BY	DATE
REV.FOR PG50 UNITS	MS	2.15.1
FBC UPDATE	SM	12.17.1
7TH FBC CODE CHANGE	SR	3.24.1

THE INSTALLATION DETAILS DESCRIBED HEREIN ARE GENERAL AND MAY NOT REFLECT ACTUAL CONDITIONS FOR A SPECIFIC SITE. IF SITE CONDITIONS CAUSE INSTALLATION TO DEVIATE FROM THE REQUIREMENTS DETAILED HEREIN, A LICENSED ENGINEER OR ARCHITECT SHALL PREPARE SITE SPECIFIC DOCUMENTS FOR USE WITH THIS DOCUMENT.



FL #: FL19562

DATE: 12.17.15

DWG. BY: SM	CHK. BY: MSS
----------------	-----------------

SCALE: NTS

DWG. #: AWD092

SHEET:

 $\Delta$ 

OF 6



CIRCLE TOP

CHORD

OCTAGON

TRAPEZOID

QUARTER CIRCLE - R

HALF SPRINGLINE

CIRCLE

UNEQUAL LEG ARCH

EQUAL LEG ARCH

SPRINGLINE

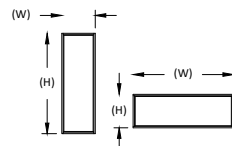
HEXAGON

PENTAGON

PEAK PENTAGON

RIGHT TRIANGLE

TRIANGLE



**NOTE:**  
WINDOW WIDTH (W) AND HEIGHT  
(H) ARE INTERCHANGEABLE FOR ALL  
SIZES SHOWN HEREIN NOT TO EXCEED  
MAXIMUM TESTED SQUARE FOOT AREA.

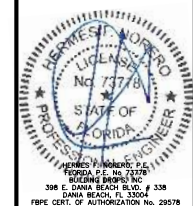
RENEWAL BY ANDERSEN FIXED  
WINDOWS - FULL FRAME  
(NON-HVHZ)/(NON-IMPACT)

**BUILDING DROPS, INC.**  
8 E. DANIA BEACH BLVD., STE. 338  
DANIA BEACH, FL 33004  
PH: (954) 399-8478  
FAX: (954) 744-4738  
WEB: [www.buildingdrops.com](http://www.buildingdrops.com)



REMARKS	BY	DATE
REV.FOR PG50 UNITS	MS	2.15.16
FBC UPDATE	SM	12.17.18
7TH FBC CODE CHANGE	SR	3.24.20

THE INSTALLATION DETAILS DESCRIBED HEREIN ARE GENERIC AND MAY NOT REFLECT ACTUAL CONDITIONS FOR A SPECIFIC SITE. IF SITE CONDITIONS CAUSE INSTALLATION TO DEVIATE FROM THE REQUIREMENTS DETAILED HEREIN, A LICENSED ENGINEER OR ARCHITECT SHALL PREPARE SITE SPECIFIC DOCUMENTS FOR USE WITH THIS DOCUMENT.



FL #: FL19562

DATE: 12.17.15

DWG. BY: <b>SM</b>	CHK. BY: <b>MSS</b>
-----------------------	------------------------

SCALE: NTS

DWG. #: AWD092

SHEET:

e

OF 6