

**FOUNDATION PLAN**  
SCALE: 1/4" = 1'-0"

CONCRETE:  
CONCRETE SHALL HAVE A MINIMUM SPECIFIED COMPRESSIVE STRENGTH OF 2500 PSI AT 28 DAYS.

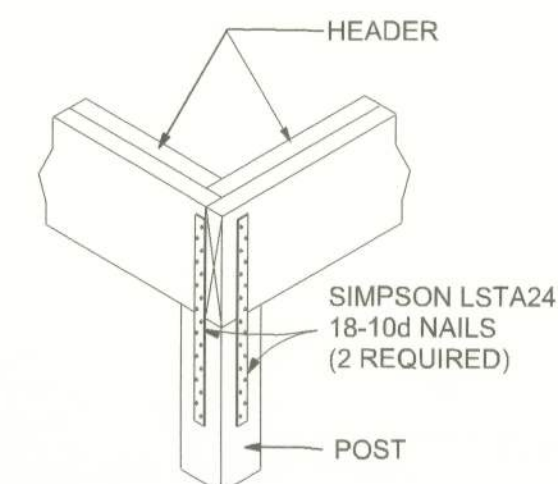
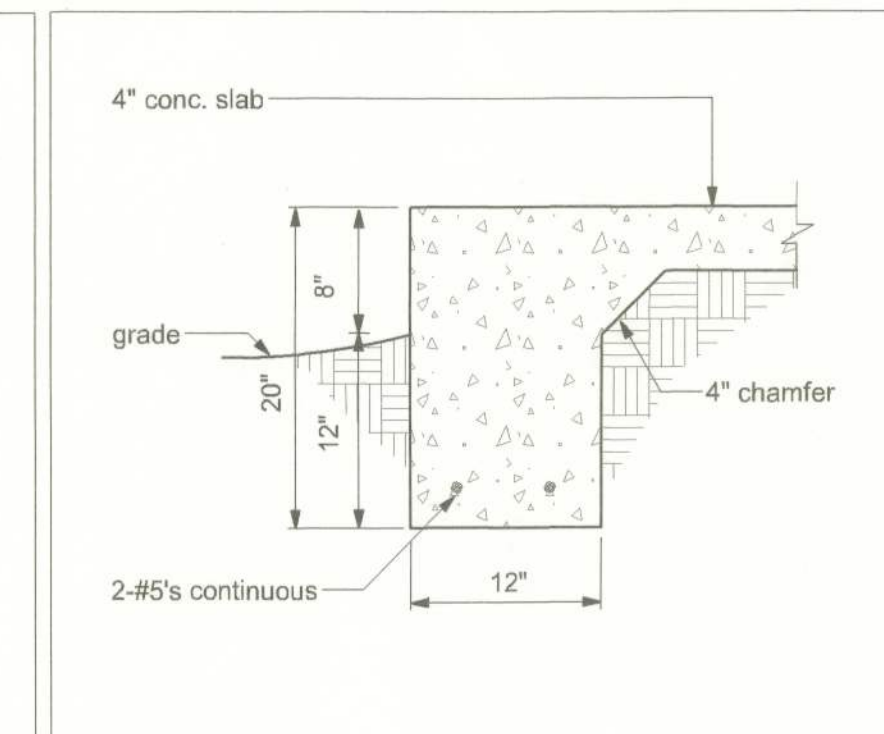
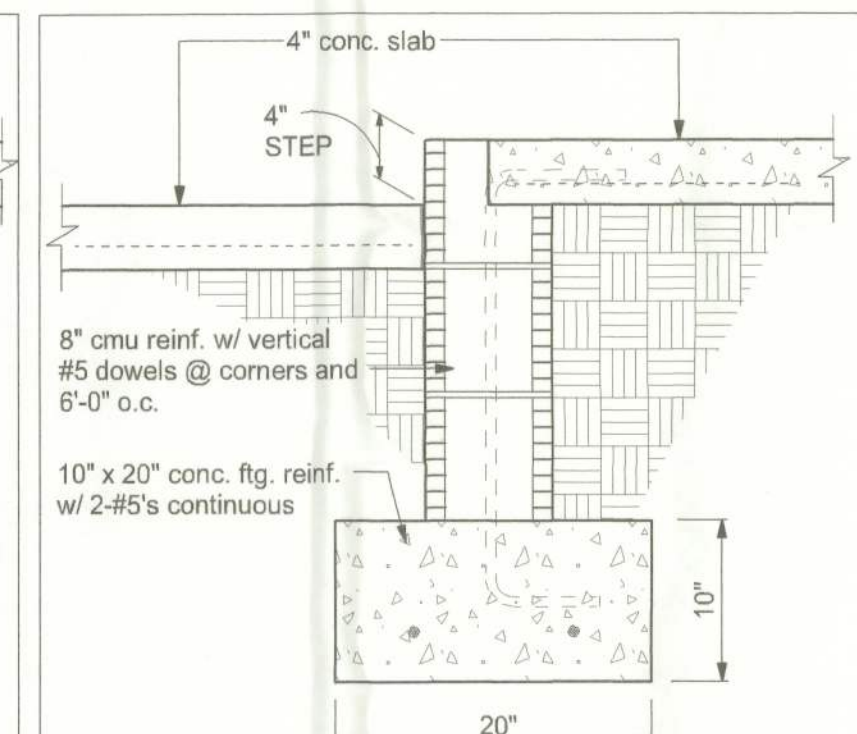
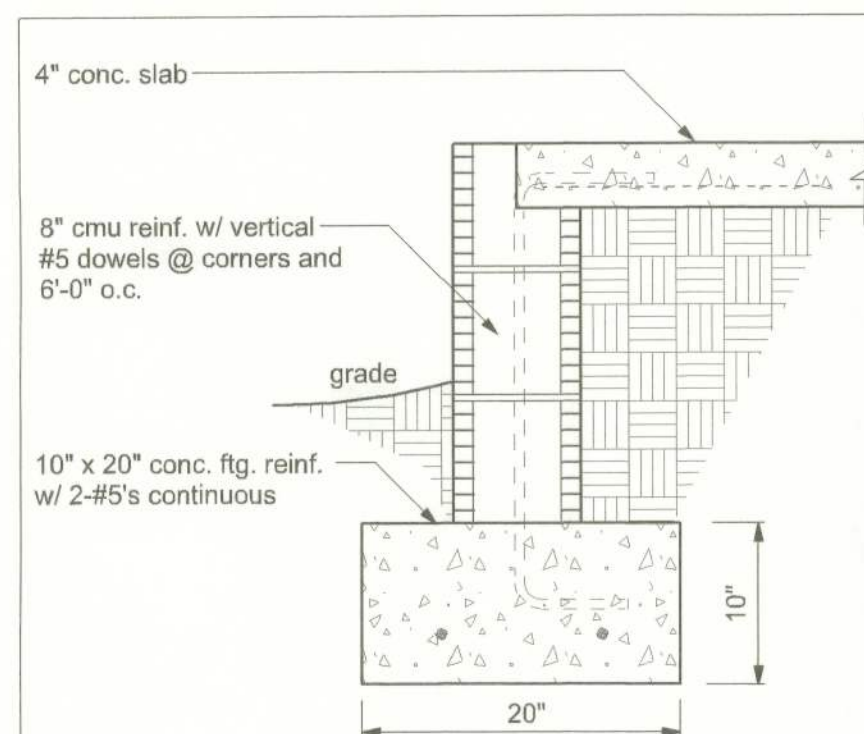
REINFORCING STEEL:  
THE REINFORCING STEEL SHALL BE MINIMUM GRADE 60.

COVER OVER REINFORCING STEEL  
FOR FOUNDATIONS, MINIMUM CONCRETE COVER OVER REINFORCING BARS SHALL BE:  
3 INCHES IN FOUNDATIONS WHERE THE CONCRETE IS CAST AGAINST AND PERMANENTLY IN CONTACT WITH THE EARTH OR EXPOSED TO THE EARTH OR WEATHER AND 1 1/2 INCHES ELSEWHERE. REINFORCING BARS EMBEDDED IN GROUTED CELLS SHALL HAVE A MINIMUM CLEAR DISTANCE OF 1/4 INCH FOR FINE GROUT OR 1/2 INCH FOR COARSE GROUT BETWEEN REINFORCING BARS AND ANY FACE OF A CELL. REINFORCING BARS USED IN MASONRY WALLS SHALL HAVE A MASONRY COVER (INCLUDING GROUT) OF NOT LESS THAN 2 INCHES FOR MASONRY UNITS WITH FACE EXPOSED TO EARTH OR WEATHER 1 1/2 INCHES FOR MASONRY UNITS NOT EXPOSED TO EARTH OR WEATHER

REINFORCEMENT MAY BE BENT IN THE SHOP OR THE FIELD PROVIDED:  
1. ALL REINFORCEMENT IS BENT COLD.  
2. THE DIAMETER OF THE BEND, MEASURED ON THE INSIDE OF THE BAR, IS NOT LESS THAN SIX-BAR DIAMETERS AND  
3. REINFORCEMENT PARTIALLY EMBEDDED IN CONCRETE SHALL NOT BE FIELD BENT.

EXCEPTION: WHERE BENDING IS NECESSARY TO ALIGN DOWEL BARS WITH A VERTICAL CELL, BARS PARTIALLY EMBEDDED IN CONCRETE SHALL BE PERMITTED TO BE BENT AT A SLOPE OF NOT MORE THAN 1 INCH OF HORIZONTAL DISPLACEMENT TO 6 INCHES OF VERTICAL BAR LENGTH.

GALVANIZATION:  
METAL ACCESSORIES FOR USE IN EXTERIOR WALL CONSTRUCTION AND NOT DIRECTLY EXPOSED TO THE WEATHER SHALL BE GALVANIZED IN ACCORDANCE WITH ASTM A 153, CLASS B-2. METAL PLATE CONNECTORS, SCREWS, BOLTS AND NAILS EXPOSED DIRECTLY TO THE WEATHER SHALL BE STAINLESS STEEL OR HOT DIPPED GALVANIZED.

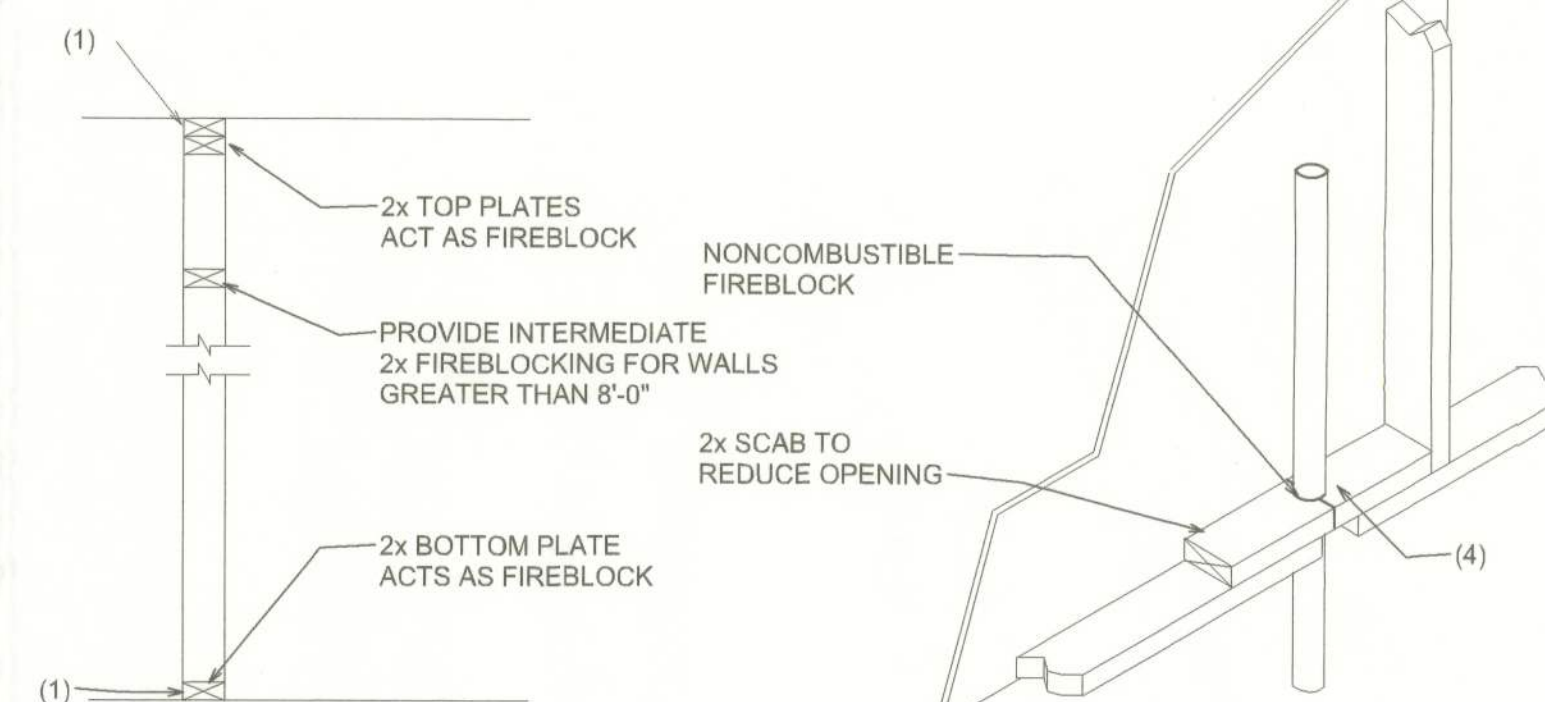


**CORNER POST/HEADER DETAIL**  
NTS

**FIREBLOCKING NOTES:**

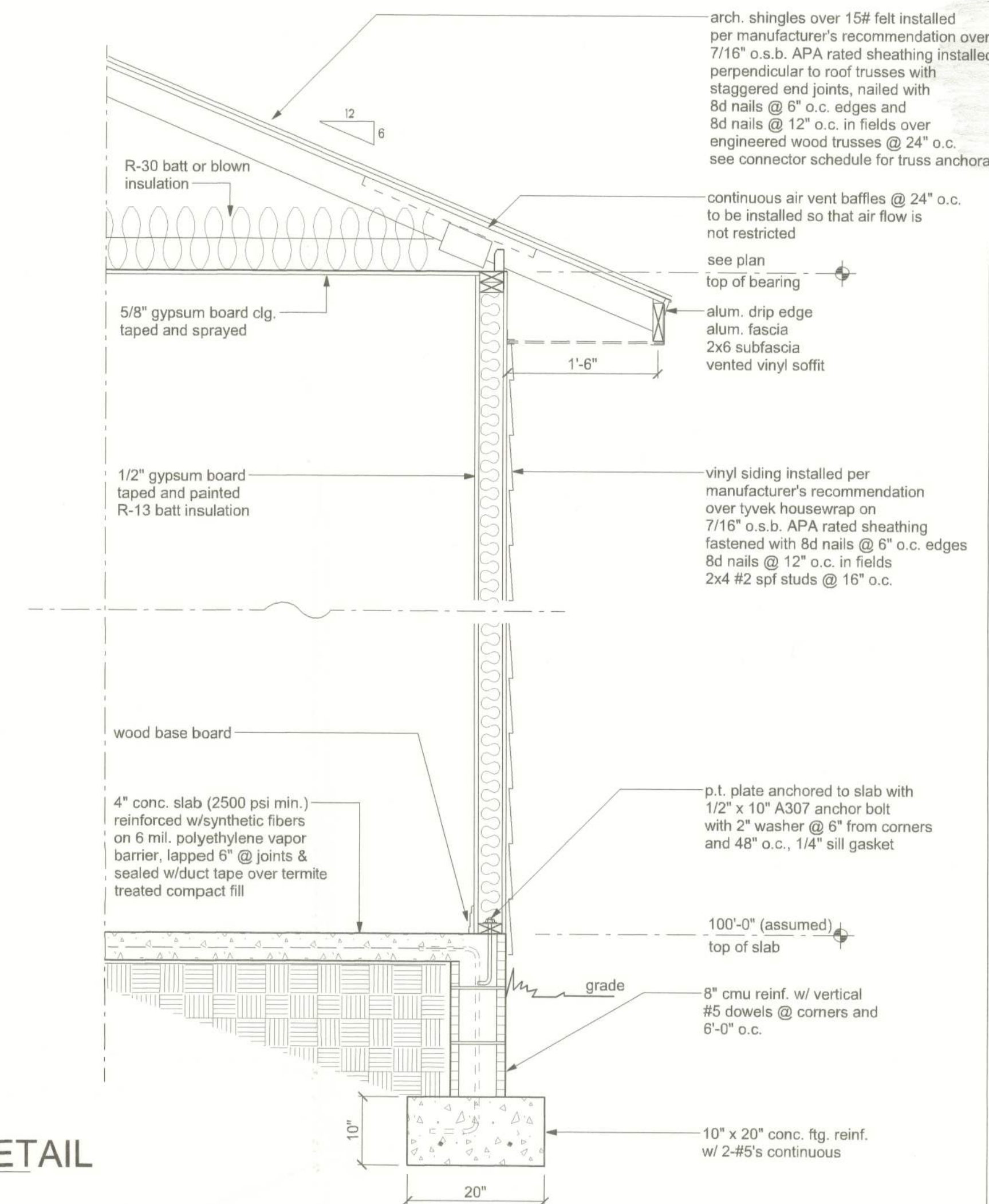
FIREBLOCKING SHALL BE INSTALLED IN WOOD FRAME CONSTRUCTION IN THE FOLLOWING LOCATIONS:

1. IN CONCEALED SPACES OF STUD WALLS AND PARTITIONS INCLUDING FURRED SPACES AT CEILING AND FLOOR LEVELS.
2. AT ALL INTERCONNECTIONS BETWEEN CONCEALED VERTICAL AND HORIZONTAL SPACES SUCH AS OCCUR AT SOFFITS, DROP CEILINGS, COVE CEILINGS, ETC.
3. IN CONCEALED SPACES BETWEEN STAIR STRINGERS AT THE TOP AND BOTTOM OF THE RUN.
4. AT OPENINGS AROUND VENTS, PIPES, DUCTS, CHIMNEYS AND FIREPLACES AT CEILING AND FLOOR LEVELS WITH PYROPANEL MULTIFLEX SEALANT
5. AT ALL INTERCONNECTIONS BETWEEN CONCEALED VERTICAL STUD WALL OR PARTITION SPACES AND CONCEALED SPACES CREATED BY AN ASSEMBLY OF FLOOR JOISTS. FIREBLOCKING SHALL BE PROVIDED FOR THE FULL DEPTH OF THE JOISTS AT THE ENDS AND OVER THE SUPPORTS.

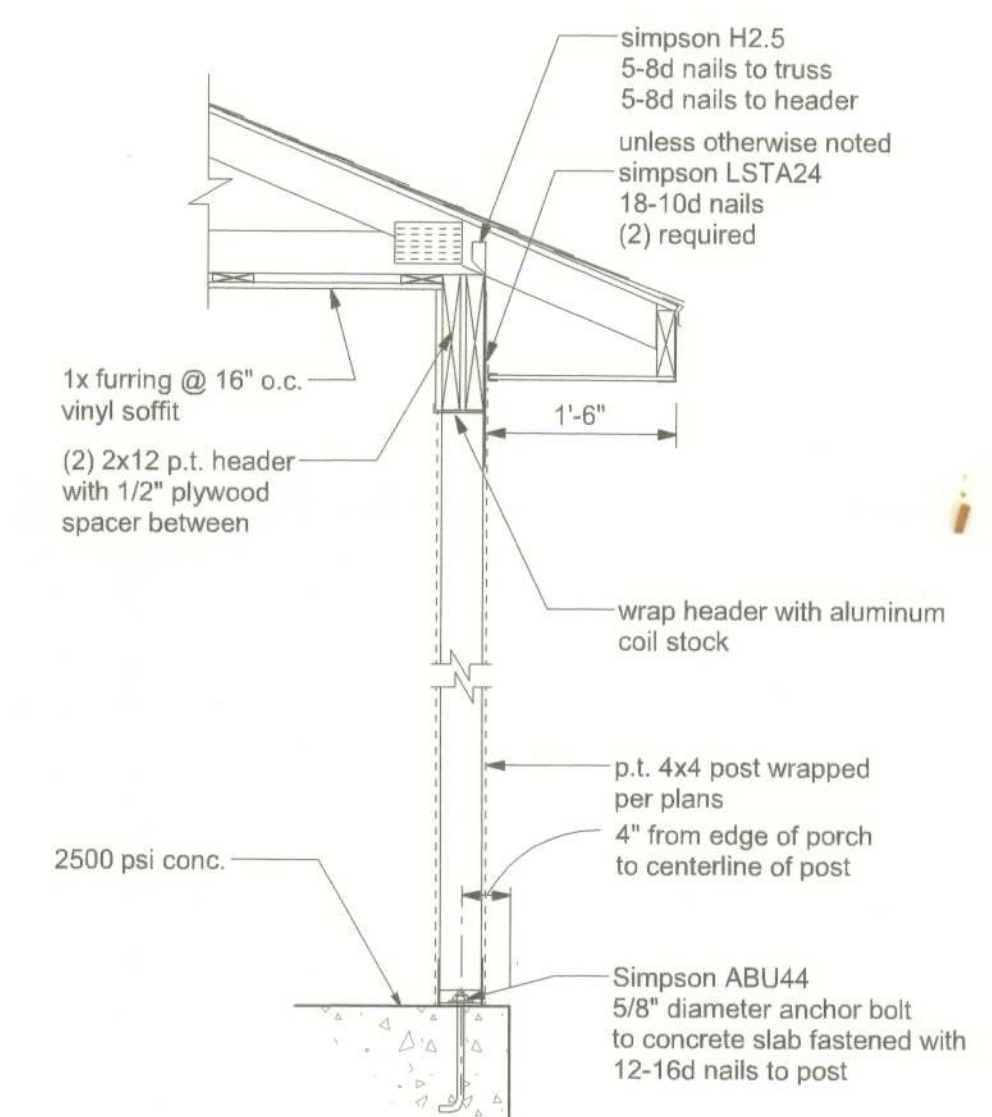


**PLATFORM FRAMING**

**PENETRATIONS**



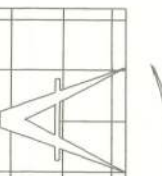
**TYPICAL WALL SECTION**  
SCALE: 3/4" = 1'-0"



**PORCH SECTION**  
SCALE: 3/4" = 1'-0"

**ENGINEERED PLANS  
FOR RESIDENCE**

128 SW NASSAU STREET  
LAKE CITY, FL 32025  
(386)758-4209



**Freeman**  
Design Group Inc.

DRAWN BY  
W.H.F.

DATE  
2/17/2012

APPROVED  
W.H.F.

REVISIONS

SHEET  
S-2

OF  
4

PROJECT NO.  
12.R007

CERTIFICATE OF AUTHORIZATION # 00008701

29950