

Ronald
Clark
Construction
Inc.

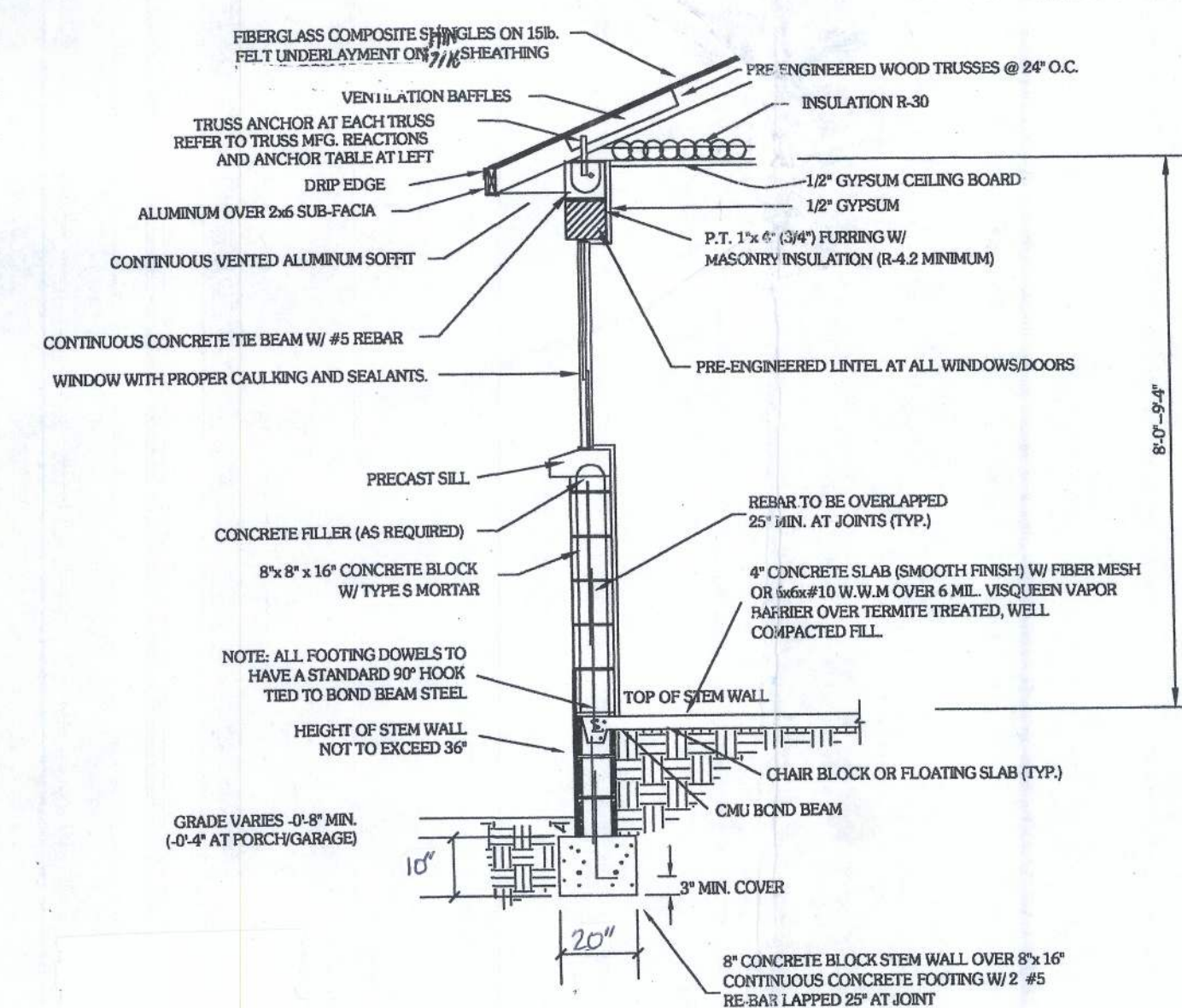
Floor Plan
PI-3

Living 960
Porch 252
Total 1212

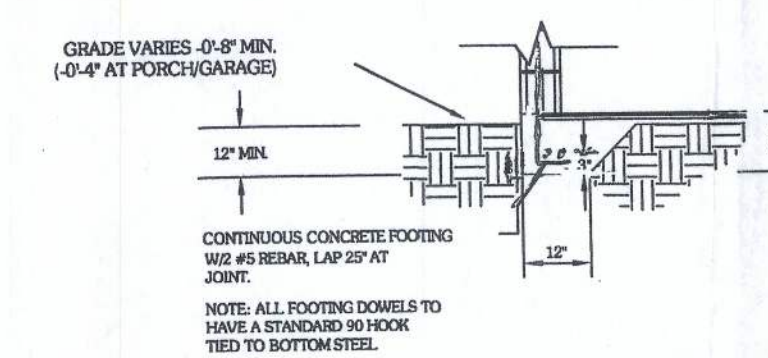
TR-38
6046-56

CODES & DESIGN LOADS

JURISDICTION: Columbia County
 PROJECT NAME: Radzinski Grandfather Suite
 PROJECT ADDRESS: 158 SW Conestoga Way, Ft. White
 ARCHITECT/ENGINEER: Ronald Clark / Schafer Engineering, LLC
 TYPE OF CONSTRUCTION: Block Ronald Clark
 BUILDING DESIGN: CLOSED
 BUILDING CODE: FLORIDA BUILDING CODE - 2007 Residential w/2009 Supplements
 PLUMBING CODE: FLORIDA PLUMBING CODE - 2007 Residential w/2009 Supplements
 MECHANICAL CODE: FLORIDA MECH. & GAS CODE - 2007 Residential w/2009 Supplements
 ELECTRICAL CODE: NATIONAL ELECTRICAL CODE - 2008
 IBHS CODE: N/A
 ASCE CODE: ASCE-7.02
 CONSTRUCTION TYPE: SED
 ALLOWABLE NO. OF FLOORS: ONE (1)
 WIND VELOCITY: 110 (M.F.H.) (3 SECOND GUST)
 FLOOR L.L.: 40 (P.S.F.) FLOOR D.L.: 10 (P.S.F.)
 ROOF L.L.: 20 (P.S.F.) ROOF D.L.: 6+4 B.C. + T.C. (P.S.F.)
 OCCUPANCY TYPE: R-3 IMPORTANCE FACTOR 1.0
 EXPOSURE B
 INTERNAL PRESSURE COEFFICIENT +/- 0.18
 MEAN BUILDING HEIGHT 15 FT.
 OVERHANG 1'-4" ROOF PITCH 6/12
 IMPACT RESISTANT ASSEMBLY NO SHUTTERS NO



STEM WALL FOOTER



MONOLITHIC FOOTER

TYPICAL CONCRETE BLOCK WALL SECTION

MASONRY CONNECTION CHART		
SIMPSON ANCHOR	FASTENER	MAX. UPLIFT
HETA12	7-10d x 1 1/2"	1265
HETA20	10-10d x 1 1/2"	1805
HGT	22-10d (grader) (1) 3/8" x 12" anchor	3965
HGT-2	16-10d (grader) (2) 3/8" x 12" anchor	10880

ALL CONNECTORS SPECIFIED MAY BE SUBSTITUTED W/ EQUAL OR GREATER CONNECTORS.