

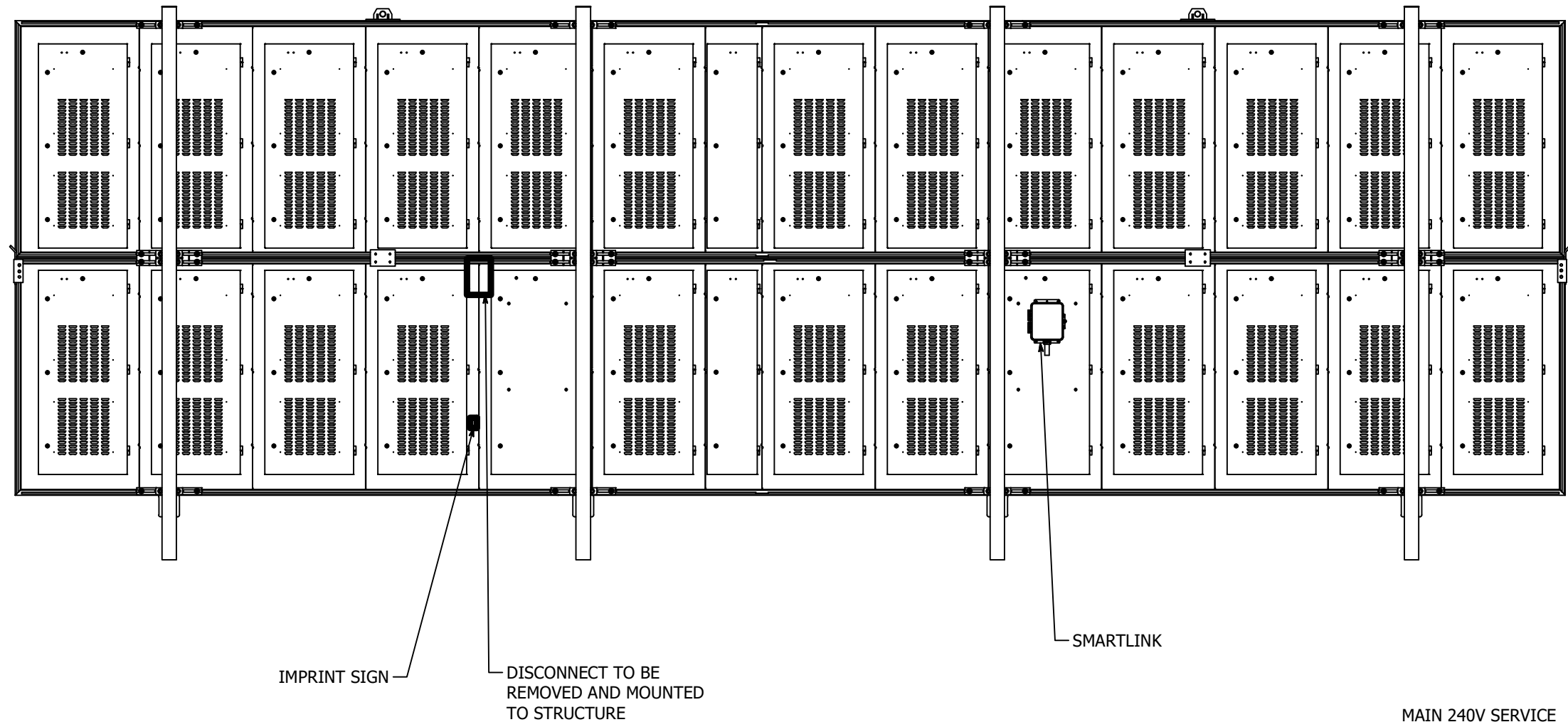
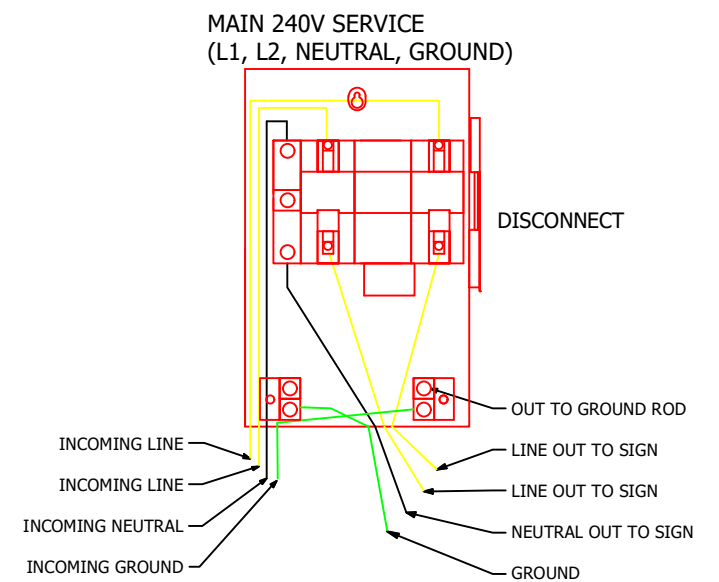


REVISION	SHEET	LINEAR TOLERANCES		ANGULAR TOLERANCES		THIRD ANGLE PROJECTION	CROSS REF.		DESCRIPTION	
6	1 OF 5	X/X..... = ± 1/16"	ALL DIMENSIONS ARE U.S. IMPERIAL UNITS , UNLESS OTHERWISE SPECIFIED. STANDARD TOLERANCES APPLY TO ALL DIMS UNLESS OTHERWISE SPECIFIED. TOLERANCES DO NOT APPLY TO REFERENCE DIMS (XXX.XX)	X°..... = ± 3°		LAMAR 400 REV 6		VIEWING AREA, 11'-0" x 35'-11", REAR SERVICE INTERLOCKING		
		X.X..... = ± .0450"		X.X°..... = ± 1°		CNC PROGRAM		MATERIAL		
		X.XX..... = ± .0300"		X.XX°..... = ± .5°		DATE CREATED		DRAWN		
		X.XXX..... = ± .0150"				4/1/2021		T. Cates		
		X.XXXX..... = ± .0050"				VAULT LOCATION: Designs\7 Digit Part Numbers\990\990-0063.idw		PART NUMBER		
								990-0063 - A		



INSTALLATION NOTES:

- 1) ELECTRICAL REQUIREMENTS: 240 VOLTS, SINGLE PHASE, 28 TOTAL AMPS FOR SIGN, 4-WIRE, CURRENT CARRYING NEUTRAL 28 PER LINE AMPS AND 6.72 KW TOTAL FOR SIGN.
- 2) DISCONNECT: 30 AMP BREAKER 120/240 VAC
- 3) GROUND: DRIVE A COPPER-CLAD GROUND ROD INTO THE GROUND NEAR THE SIGN. ATTACH A #6 GROUND WIRE TO THE GROUND ROD AND ROUTE AND CONNECT IT TO THE GROUND TERMINAL INSIDE THE DISCONNECT. ENSURE ALL WIRING CONNECTING THE GROUND ROD TO THE SIGN IS SECURELY ATTACHED. BE SURE TO FOLLOW ALL NATIONAL ELECTRICAL CODE REQUIREMENTS.

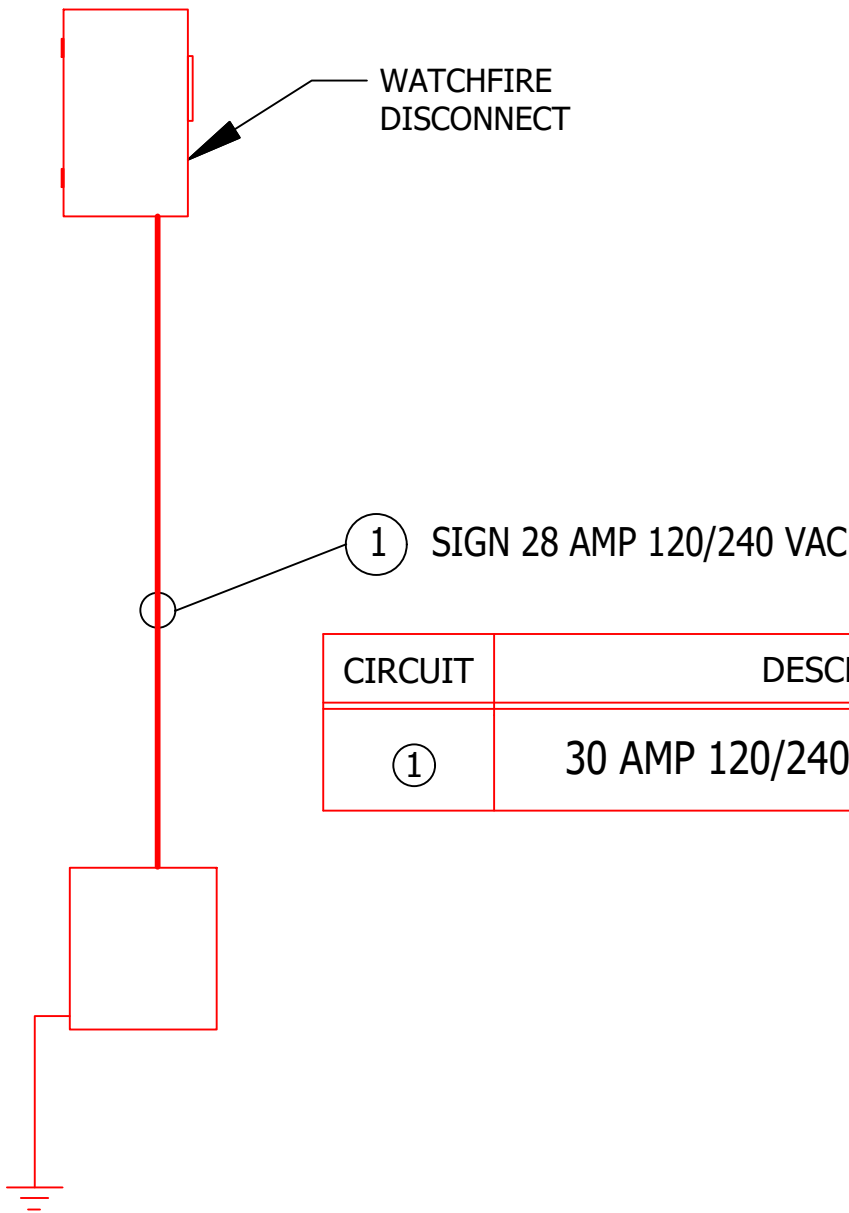


REVISION	SHEET	LINEAR TOLERANCES	ANGULAR TOLERANCES	THIRD ANGLE PROJECTION	CROSS REF.	DESCRIPTION
6	2 OF 5	X/X..... = ± 1/16"	X°..... = ± 3° X.X°..... = ± 1° X.XX°..... = ± .5°		LAMAR 400 REV 6	ELECTRICAL LAYOUT, 11'-0" x 35'-11", REAR SERVICE INTERLOCKING
		X.X..... = ± .0450"			CNC PROGRAM	MATERIAL
		X.XX..... = ± .0300"			DATE CREATED	PART NUMBER
		X.XXX..... = ± .0150"			4/1/2021	990-0063 - B
		X.XXXX..... = ± .0050"			DRAWN T. Cates	

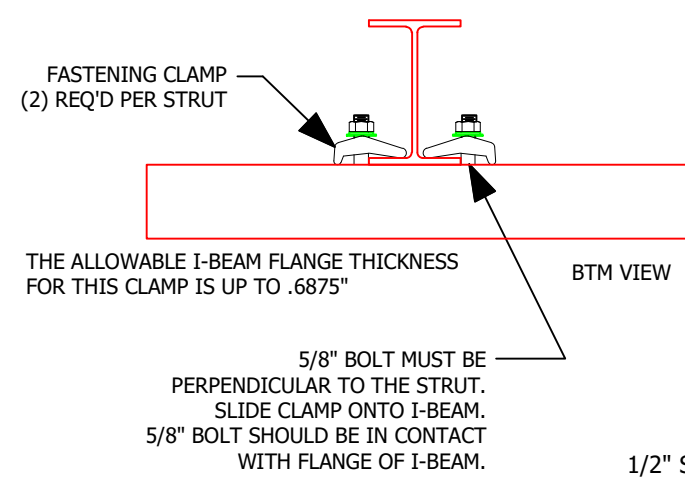
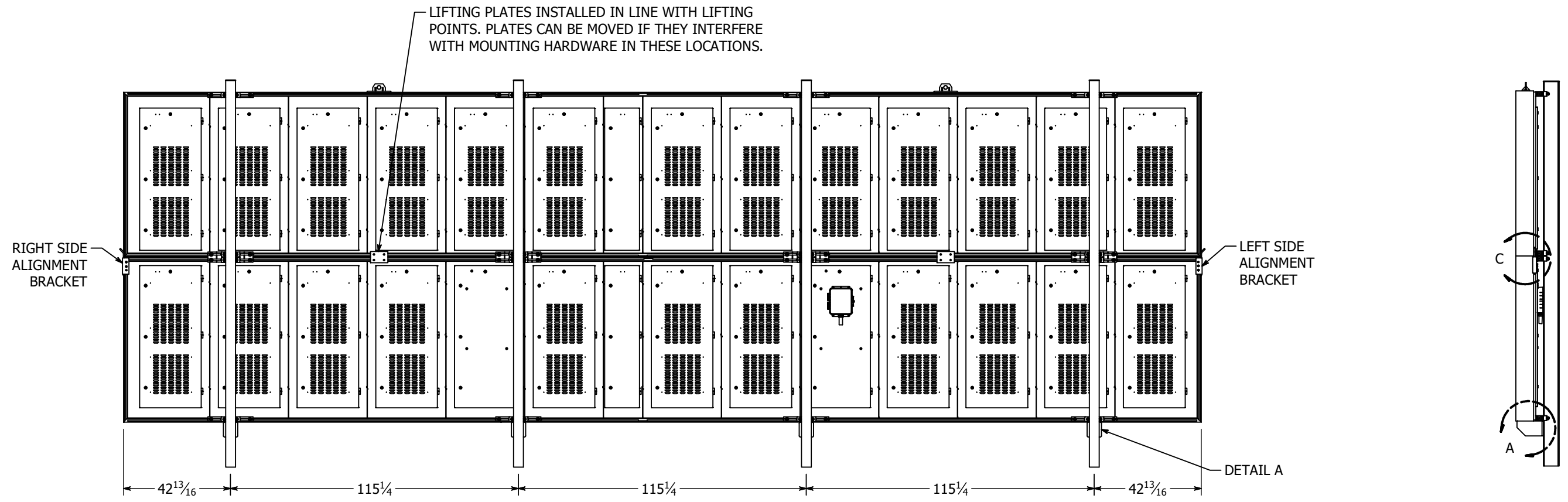
ALL DIMENSIONS ARE U.S. IMPERIAL UNITS, UNLESS OTHERWISE SPECIFIED. STANDARD TOLERANCES APPLY TO ALL DIMS UNLESS OTHERWISE SPECIFIED. TOLERANCES DO NOT APPLY TO REFERENCE DIMS (XXX.XX)

watchfire

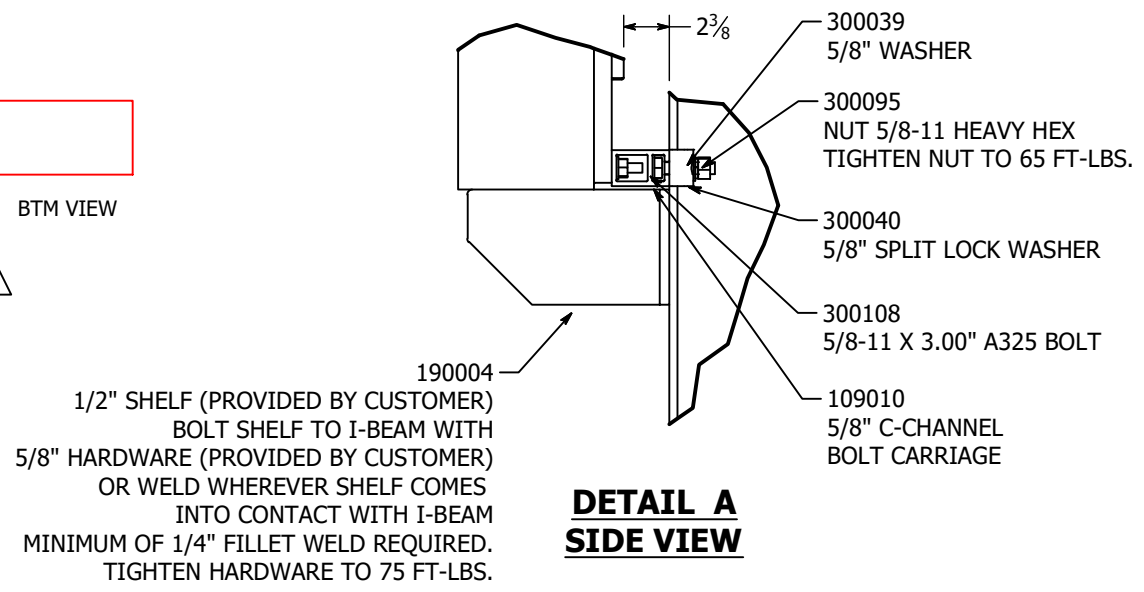
VAULT LOCATION: Designs\7 Digit Part Numbers\990\990-0063.idw



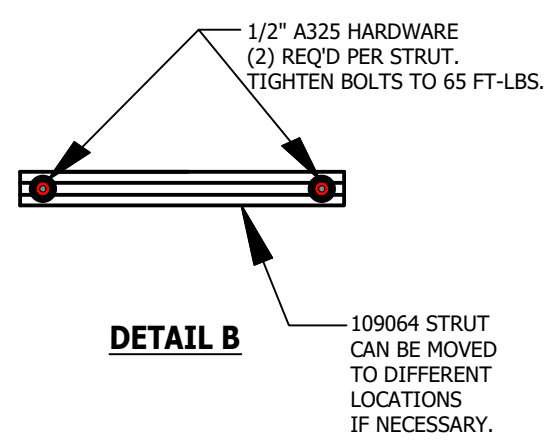
CIRCUIT	DESCRIPTION	LOAD PER LINE
①	30 AMP 120/240 2-POLE BREAKER	28 AMPS



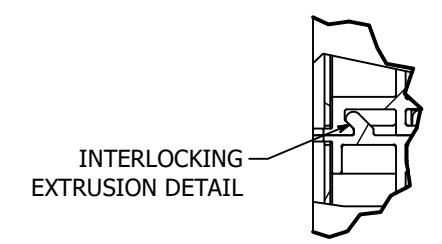
DETAIL A



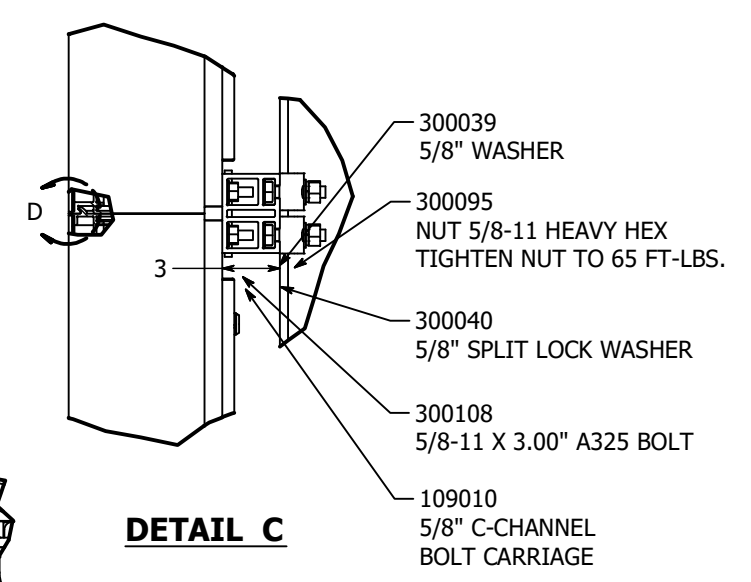
DETAIL A SIDE VIEW



DETAIL B



DETAIL D

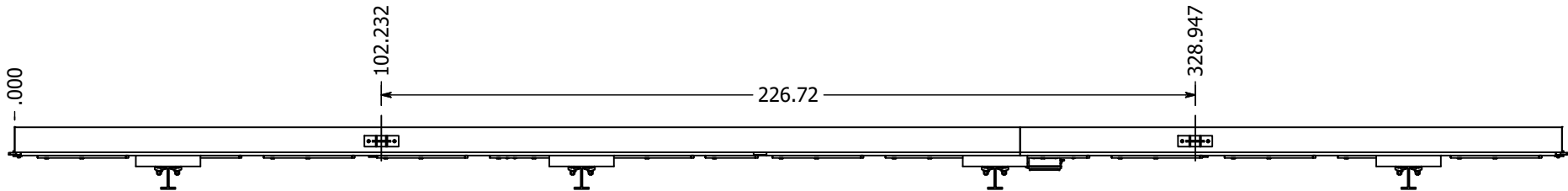


DETAIL C

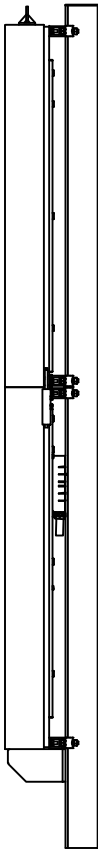
DIMENSIONS ARE IN INCHES UNLESS OTHERWISE SPECIFIED.

REVISION	SHEET	LINEAR TOLERANCES	ANGULAR TOLERANCES	THIRD ANGLE PROJECTION	CROSS REF.	DESCRIPTION
6	4 OF 5	X/X..... = ± 1/16"	X°..... = ± 3° X.X°..... = ± 1° X.XX°..... = ± .5°		LAMAR 400 REV 6	MECHANICAL LAYOUT, 11'-0" x 35'-11", REAR SERVICE INTERLOCKING
		X.X..... = ± .0450"			CNC PROGRAM	MATERIAL
		X.XX..... = ± .0300"			DATE CREATED 4/1/2021	DRAWN T. Cates
		X.XXX..... = ± .0150"			PART NUMBER	990-0063 - D
		X.XXXX..... = ± .0050"			VAULT LOCATION: Designs\7 Digit Part Numbers\990\990-0063.idw	

DAMAGE TO SIGN CAN OCCUR IF PROPER LIFTING TECHNIQUES ARE NOT USED



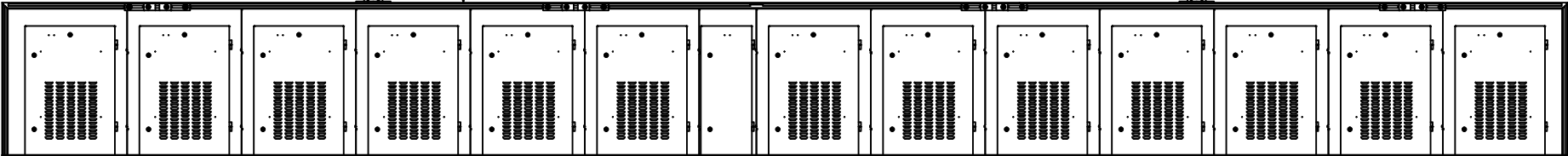
A MINIMUM OF 1" OF THE I-BEAM
NEEDS TO EXTEND ABOVE THE
TOP OF THE SIGN.



STRAP LENGTH IS 18 FT.

60°

STRAP LENGTH IS 18 FT.



11'0" x 35'11" DISPLAY IS APPROX. 4000 LBS.

ALL DIMENSIONS ARE IN INCHES
UNLESS OTHERWISE SPECIFIED.

LIFTING NOTES:

- 1) SPREADER BAR IS NOT REQUIRED.
- 2) RECOMMEND USE OF D-RING SHACKLES.
- 3) ONE STRAP PER LIFTING EYE.
- 4) STRAPS MUST BE RATED FOR LOAD.
- 5) RECOMMEND STRAP ANGLE IS 65°, MINIMUM OF 50°.
- 6) STRAP LENGTH IS = TO HALF THE TOTAL SIGN LENGTH.

REVISION	SHEET	LINEAR TOLERANCES		ANGULAR TOLERANCES		THIRD ANGLE PROJECTION	CROSS REF.	DESCRIPTION	
6	5	X/X.....	= ± 1/16"	ALL DIMENSIONS ARE U.S. IMPERIAL UNITS, UNLESS OTHERWISE SPECIFIED. STANDARD TOLERANCES APPLY TO ALL DIMS UNLESS OTHERWISE SPECIFIED. TOLERANCES DO NOT APPLY TO REFERENCE DIMS (XXX.XX)	X°..... = ± 3° X.X°..... = ± 1° X.XX°..... = ± .5°		LAMAR 400 REV 6	INSTALLATION INFO, 11'-0" x 35'-11", REAR SERVICE INTERLOCKING	
	OF	X.X.....	= ± .0450"				CNC PROGRAM	MATERIAL	
	5	X.XX.....	= ± .0300"				DATE CREATED	DRAWN	PART NUMBER
		X.XXX.....	= ± .0150"				4/1/2021	T. Cates	990-0063 - E
		X.XXXX.....	= ± .0050"				VAULT LOCATION: Designs\7 Digit Part Numbers\990\990-0063.idw		