

FRONT ELEVATION
SCALE: 1/4" = 1'-0"

ALTERNATE SIDING:
7/16" TEXTURED O.S.B SIDING
PANELS OVER 7# FELT
VAPOR BARRIER

SIDING:
8" X 7/16" TEXTURED O.S.B.
SIDING BOARDS, OVER 7# FELT
VAPOR BARRIER, OVER SHEATHING
(APPROVED ALTERNATE SIDING
MATERIALS MAY BE SUBSTITUTED)

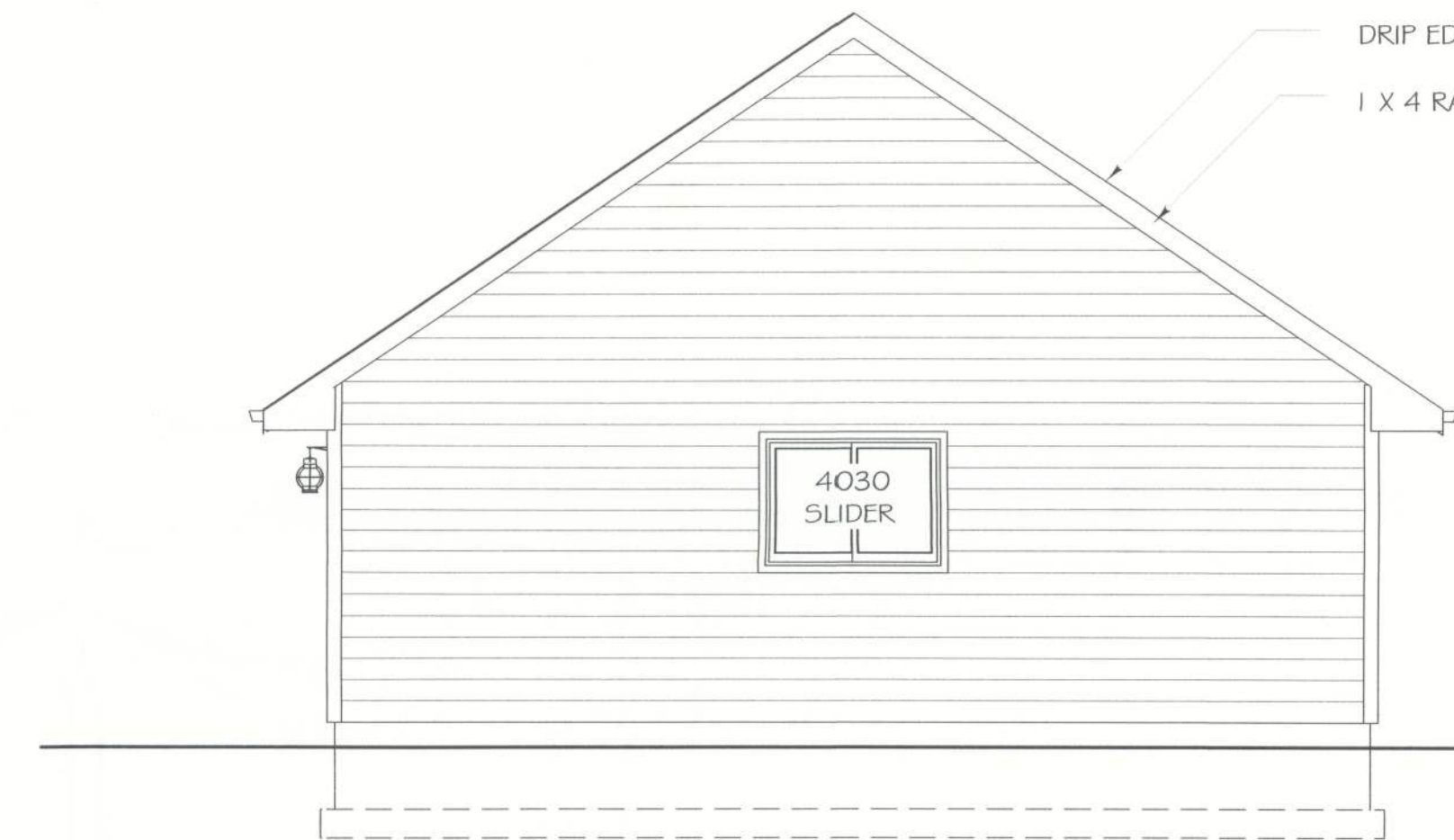
5/4 X 4 / 5/4 X 3 CORNER BOARDS

5/4 X 2 WRAP TRIM - BUTT SIDE
MEMBERS TO TOP AND BOTTOM
MEMBERS

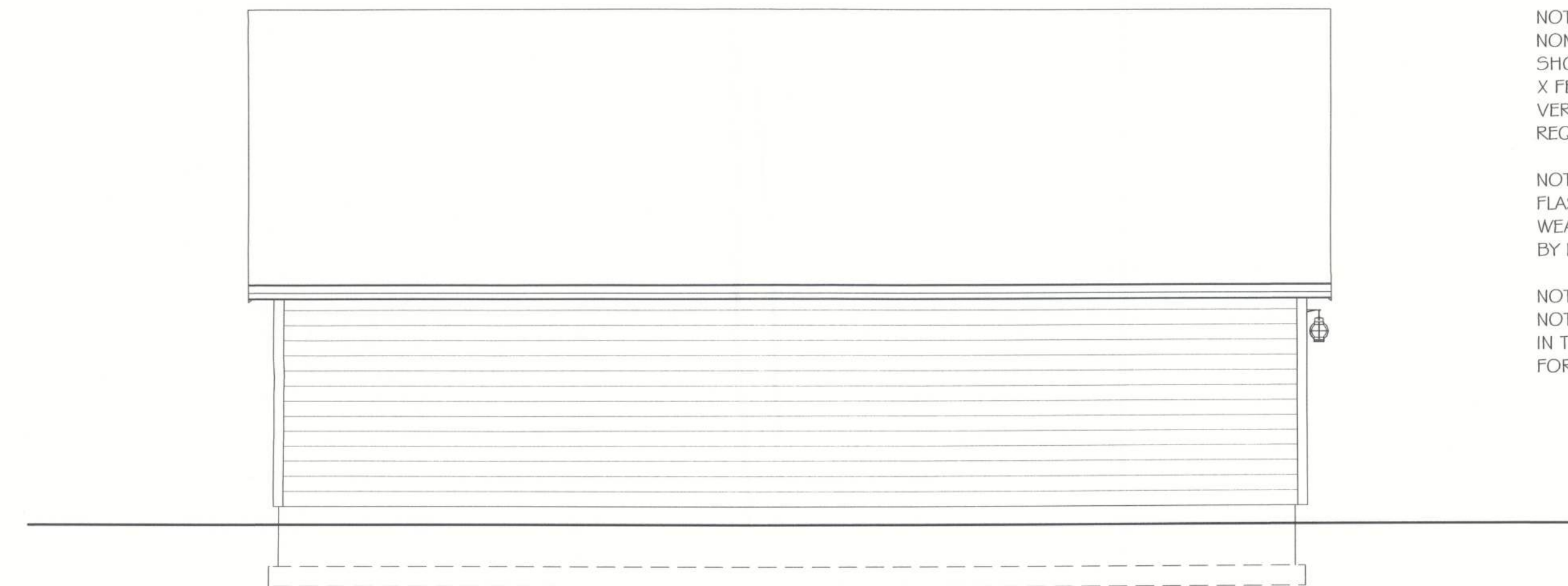
NOTE:
FOR ALTERNATIVE SIDING
USE 1X TRIM BOARDS - NAIL
OVER SIDING PANELS, TYP.



LEFT SIDE ELEVATION
SCALE: 1/4" = 1'-0"



RIGHT SIDE ELEVATION
SCALE: 1/4" = 1'-0"



REAR ELEVATION
SCALE: 1/4" = 1'-0"

NOTE:
NOMINAL WINDOW SIZES ARE
SHOWN: FEET/INCHES WIDE
X FEET/INCHES HIGH, TYP. -
VERIFY FRAMED OPENING
REQUIRED BY PRODUCT MFR.

NOTE:
FLASH OPENINGS AND PROVIDE
WEATHERSTRIPPING AS REQUIRED
BY LOCAL CODES

NOTE:
NOTES AND MATERIALS INDICATED
IN THIS ELEVATION ARE TYPICAL
FOR ENTIRE BUILDING AS APPLIC.



QUESTIONS? CALL
1-800-210-6776
WWW.BEHMDSIGN.COM

PLAN NO.
816-0

DESIGN BY:
JJB
DATE: 07/09

SHEET CONTENTS:
FRONT ELEVATION
REAR ELEVATION

SHEET
4
OF 8

COPYRIGHT BEHM DESIGN