

1. Client to review overall placement plan including dimensions, roof and ceiling conditions, top chord size, overhang / cantilever lengths, heel heights, bearing & non-bearing wall locations and heights.
2. Client to review entry and / or other conditions that require centering of peaks, overhangs or cantilevers to ensure proper truss design.
3. Client to review AHU conditions such as, hung from ceiling, recessed into ceiling or attic mounted. It is the client's responsibility to inform truss plant of locations, size, and weights.
4. Client to review special conditions, such as beam loads, dropped soffits and stylistic locations to ensure proper truss design / placement.
5. Ceiling drops and valleys not shown are to be field framed by client.
6. Hip and corner jacks not cut are to be cut in the field by others.
7. Overhangs are 2x4 or 2x6, no blocking is applied.
8. Overhangs are considered wild, cut to fit in field.
9. Temporary or permanent bracing is not included in truss package.
10. Erect trusses per BCSI-91 Summary Sheet. Prior to erecting trusses refer to sealed truss engineering sheets for additional important info.
11. It is the client's responsibility to coordinate delivery dates with truss plant/ies. Truss delivery will be on the agreed upon date..
12. Client to provide a marked location for delivery. Location must be accessible, level and clear of materials and debris. In lieu of this, trusses will be delivered in the best available location at our driver's discretion. No changes will be accepted if above criteria is not met.
13. All truss repairs must be coordinated with truss plant. Do Not Cut. Any trusses before contacting truss plant with specifics of problem.
14. No back charges or crane charges of any kind will be accepted unless specifically approved in writing by truss plant management.
15. Note: One approved layout must be returned to truss plant before fabrication / scheduling.
16. *** Upon signing you agree that you have reviewed this placement plan in its entirety.

Approved By: _____
Approval Date: _____
Requested Delivery Date: _____

Roof Loading: 20.00 TC/L, 7.0 TC/L, 0.0 BCL, 10.0 BCL, DOL 1.25

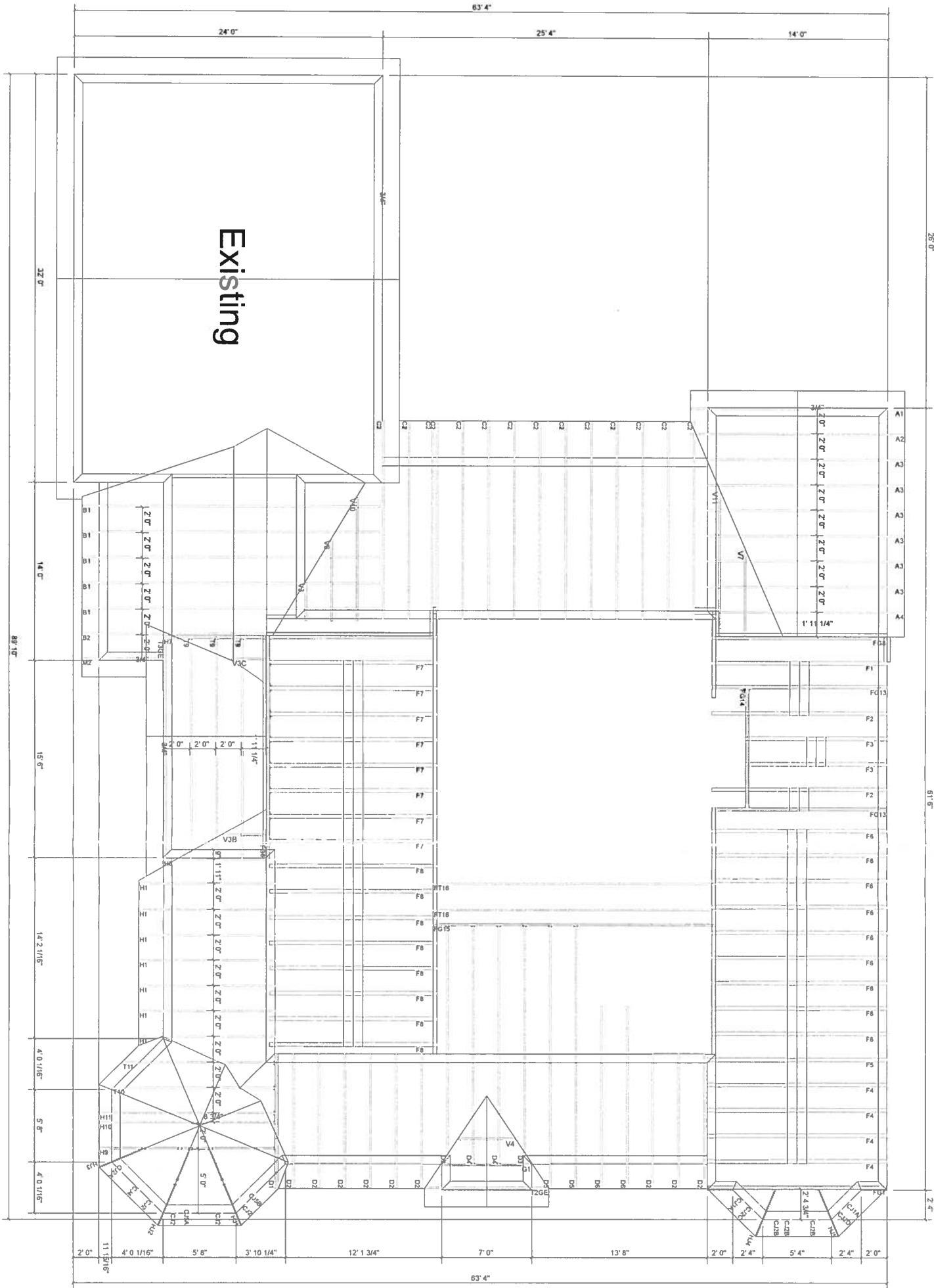
Floor Loading: 40.00 TC/L, 10.00 TC/L, 0.0 BCL, 5.0 BCL, DOL 1.00

DESIGN CRITERIA		HANGERS	
T.C. Pitch	Varies	HUS36 = Typ. Single Ply Roof Truss	HUS46 = Typ. Floor Truss
B.C. Pitch	Varies	Ⓐ HTU26	Ⓐ HTU26
T.C. Size	Varies	Ⓑ HUS26-2	Ⓑ HUS26-2
Heel Hgt	Varies	Ⓒ HUS28-3	Ⓒ HUS28-3
Bearing	Varies	Ⓓ HUS48	Ⓓ HUS48
Cantilever	N/A	Ⓔ THA422	Ⓔ THA422
Overhang	1'-4"	Ⓕ THAC422	Ⓕ THAC422
O.H. Cut	Plumb	Ⓖ HTU48	Ⓖ HTU48
Spacing	24" O.C.	Ⓗ HTU48	Ⓗ HTU48
		Ⓙ HTU48	Ⓙ HTU48
		Ⓚ HTU48	Ⓚ HTU48
		Ⓛ HTU48	Ⓛ HTU48
		Ⓜ HTU48	Ⓜ HTU48
		Ⓨ HTU48	Ⓨ HTU48
		Ⓩ HTU48	Ⓩ HTU48
		ⓐ HTU48	ⓐ HTU48
		ⓑ HTU48	ⓑ HTU48
		ⓓ HTU48	ⓓ HTU48
		ⓔ HTU48	ⓔ HTU48
		ⓖ HTU48	ⓖ HTU48
		ⓗ HTU48	ⓗ HTU48
		ⓞ HTU48	ⓞ HTU48
		Ⓩ HTU48	Ⓩ HTU48
		ⓑ HTU48	ⓑ HTU48
		ⓓ HTU48	ⓓ HTU48
		ⓔ HTU48	ⓔ HTU48
		ⓖ HTU48	ⓖ HTU48
		ⓗ HTU48	ⓗ HTU48
		ⓞ HTU48	ⓞ HTU48
		Ⓩ HTU48	Ⓩ HTU48
		ⓑ HTU48	ⓑ HTU48
		ⓓ HTU48	ⓓ HTU48
		ⓔ HTU48	ⓔ HTU48
		ⓖ HTU48	ⓖ HTU48
		ⓗ HTU48	ⓗ HTU48
		ⓞ HTU48	ⓞ HTU48
		Ⓩ HTU48	Ⓩ HTU48
		ⓑ HTU48	ⓑ HTU48
		ⓓ HTU48	ⓓ HTU48
		ⓔ HTU48	ⓔ HTU48
		ⓖ HTU48	ⓖ HTU48
		ⓗ HTU48	ⓗ HTU48
		ⓞ HTU48	ⓞ HTU48
		Ⓩ HTU48	Ⓩ HTU48
		ⓑ HTU48	ⓑ HTU48
		ⓓ HTU48	ⓓ HTU48
		ⓔ HTU48	ⓔ HTU48
		ⓖ HTU48	ⓖ HTU48
		ⓗ HTU48	ⓗ HTU48
		ⓞ HTU48	ⓞ HTU48
		Ⓩ HTU48	Ⓩ HTU48
		ⓑ HTU48	ⓑ HTU48
		ⓓ HTU48	ⓓ HTU48
		ⓔ HTU48	ⓔ HTU48
		ⓖ HTU48	ⓖ HTU48
		ⓗ HTU48	ⓗ HTU48
		ⓞ HTU48	ⓞ HTU48
		Ⓩ HTU48	Ⓩ HTU48
		ⓑ HTU48	ⓑ HTU48
		ⓓ HTU48	ⓓ HTU48
		ⓔ HTU48	ⓔ HTU48
		ⓖ HTU48	ⓖ HTU48
		ⓗ HTU48	ⓗ HTU48
		ⓞ HTU48	ⓞ HTU48
		Ⓩ HTU48	Ⓩ HTU48
		ⓑ HTU48	ⓑ HTU48
		ⓓ HTU48	ⓓ HTU48
		ⓔ HTU48	ⓔ HTU48
		ⓖ HTU48	ⓖ HTU48
		ⓗ HTU48	ⓗ HTU48
		ⓞ HTU48	ⓞ HTU48
		Ⓩ HTU48	Ⓩ HTU48
		ⓑ HTU48	ⓑ HTU48
		ⓓ HTU48	ⓓ HTU48
		ⓔ HTU48	ⓔ HTU48
		ⓖ HTU48	ⓖ HTU48
		ⓗ HTU48	ⓗ HTU48
		ⓞ HTU48	ⓞ HTU48
		Ⓩ HTU48	Ⓩ HTU48
		ⓑ HTU48	ⓑ HTU48
		ⓓ HTU48	ⓓ HTU48
		ⓔ HTU48	ⓔ HTU48
		ⓖ HTU48	ⓖ HTU48
		ⓗ HTU48	ⓗ HTU48
		ⓞ HTU48	ⓞ HTU48
		Ⓩ HTU48	Ⓩ HTU48
		ⓑ HTU48	ⓑ HTU48
		ⓓ HTU48	ⓓ HTU48
		ⓔ HTU48	ⓔ HTU48
		ⓖ HTU48	ⓖ HTU48
		ⓗ HTU48	ⓗ HTU48
		ⓞ HTU48	ⓞ HTU48
		Ⓩ HTU48	Ⓩ HTU48
		ⓑ HTU48	ⓑ HTU48
		ⓓ HTU48	ⓓ HTU48
		ⓔ HTU48	ⓔ HTU48
		ⓖ HTU48	ⓖ HTU48
		ⓗ HTU48	ⓗ HTU48
		ⓞ HTU48	ⓞ HTU48
		Ⓩ HTU48	Ⓩ HTU48
		ⓑ HTU48	ⓑ HTU48
		ⓓ HTU48	ⓓ HTU48
		ⓔ HTU48	ⓔ HTU48
		ⓖ HTU48	ⓖ HTU48
		ⓗ HTU48	ⓗ HTU48
		ⓞ HTU48	ⓞ HTU48
		Ⓩ HTU48	Ⓩ HTU48
		ⓑ HTU48	ⓑ HTU48
		ⓓ HTU48	ⓓ HTU48
		ⓔ HTU48	ⓔ HTU48
		ⓖ HTU48	ⓖ HTU48
		ⓗ HTU48	ⓗ HTU48
		ⓞ HTU48	ⓞ HTU48
		Ⓩ HTU48	Ⓩ HTU48
		ⓑ HTU48	ⓑ HTU48
		ⓓ HTU48	ⓓ HTU48
		ⓔ HTU48	ⓔ HTU48
		ⓖ HTU48	ⓖ HTU48
		ⓗ HTU48	ⓗ HTU48
		ⓞ HTU48	ⓞ HTU48
		Ⓩ HTU48	Ⓩ HTU48
		ⓑ HTU48	ⓑ HTU48
		ⓓ HTU48	ⓓ HTU48
		ⓔ HTU48	ⓔ HTU48
		ⓖ HTU48	ⓖ HTU48
		ⓗ HTU48	ⓗ HTU48
		ⓞ HTU48	ⓞ HTU48
		Ⓩ HTU48	Ⓩ HTU48
		ⓑ HTU48	ⓑ HTU48
		ⓓ HTU48	ⓓ HTU48
		ⓔ HTU48	ⓔ HTU48
		ⓖ HTU48	ⓖ HTU48
		ⓗ HTU48	ⓗ HTU48
		ⓞ HTU48	ⓞ HTU48
		Ⓩ HTU48	Ⓩ HTU48
		ⓑ HTU48	ⓑ HTU48
		ⓓ HTU48	ⓓ HTU48
		ⓔ HTU48	ⓔ HTU48
		ⓖ HTU48	ⓖ HTU48
		ⓗ HTU48	ⓗ HTU48
		ⓞ HTU48	ⓞ HTU48
		Ⓩ HTU48	Ⓩ HTU48
		ⓑ HTU48	ⓑ HTU48
		ⓓ HTU48	ⓓ HTU48
		ⓔ HTU48	ⓔ HTU48
		ⓖ HTU48	ⓖ HTU48
		ⓗ HTU48	ⓗ HTU48
		ⓞ HTU48	ⓞ HTU48
		Ⓩ HTU48	Ⓩ HTU48
		ⓑ HTU48	ⓑ HTU48
		ⓓ HTU48	ⓓ HTU48
		ⓔ HTU48	ⓔ HTU48
		ⓖ HTU48	ⓖ HTU48
		ⓗ HTU48	ⓗ HTU48
		ⓞ HTU48	ⓞ HTU48
		Ⓩ HTU48	Ⓩ HTU48
		ⓑ HTU48	ⓑ HTU48
		ⓓ HTU48	ⓓ HTU48
		ⓔ HTU48	ⓔ HTU48
		ⓖ HTU48	ⓖ HTU48
		ⓗ HTU48	ⓗ HTU48
		ⓞ HTU48	ⓞ HTU48
		Ⓩ HTU48	Ⓩ HTU48
		ⓑ HTU48	ⓑ HTU48
		ⓓ HTU48	ⓓ HTU48
		ⓔ HTU48	ⓔ HTU48
		ⓖ HTU48	ⓖ HTU48
		ⓗ HTU48	ⓗ HTU48
		ⓞ HTU48	ⓞ HTU48
		Ⓩ HTU48	Ⓩ HTU48
		ⓑ HTU48	ⓑ HTU48
		ⓓ HTU48	ⓓ HTU48
		ⓔ HTU48	ⓔ HTU48
		ⓖ HTU48	ⓖ HTU48
		ⓗ HTU48	ⓗ HTU48
		ⓞ HTU48	ⓞ HTU48
		Ⓩ HTU48	Ⓩ HTU48
		ⓑ HTU48	ⓑ HTU48
		ⓓ HTU48	ⓓ HTU48
		ⓔ HTU48	ⓔ HTU48
		ⓖ HTU48	ⓖ HTU48
		ⓗ HTU48	ⓗ HTU48
		ⓞ HTU48	ⓞ HTU48
		Ⓩ HTU48	Ⓩ HTU48
		ⓑ HTU48	ⓑ HTU48
		ⓓ HTU48	ⓓ HTU48
		ⓔ HTU48	ⓔ HTU48
		ⓖ HTU48	ⓖ HTU48
		ⓗ HTU48	ⓗ HTU48
		ⓞ HTU48	ⓞ HTU48
		Ⓩ HTU48	Ⓩ HTU48
		ⓑ HTU48	ⓑ HTU48
		ⓓ HTU48	ⓓ HTU48
		ⓔ HTU48	ⓔ HTU48
		ⓖ HTU48	ⓖ HTU48
		ⓗ HTU48	ⓗ HTU48
		ⓞ HTU48	ⓞ HTU48
		Ⓩ HTU48	Ⓩ HTU48
		ⓑ HTU48	ⓑ HTU48
		ⓓ HTU48	ⓓ HTU48
		ⓔ HTU48	ⓔ HTU48
		ⓖ HTU48	ⓖ HTU48
		ⓗ HTU48	ⓗ HTU48
		ⓞ HTU48	ⓞ HTU48
		Ⓩ HTU48	Ⓩ HTU48
		ⓑ HTU48	ⓑ HTU48
		ⓓ HTU48	ⓓ HTU48
		ⓔ HTU48	ⓔ HTU48
		ⓖ HTU48	ⓖ HTU48
		ⓗ HTU48	ⓗ HTU48
		ⓞ HTU48	ⓞ HTU48
		Ⓩ HTU48	Ⓩ HTU48
		ⓑ HTU48	ⓑ HTU48
		ⓓ HTU48	ⓓ HTU48
		ⓔ HTU48	ⓔ HTU48
		ⓖ HTU48	ⓖ HTU48
		ⓗ HTU48	ⓗ HTU48
		ⓞ HTU48	ⓞ HTU48
		Ⓩ HTU48	Ⓩ HTU48
		ⓑ HTU48	ⓑ HTU48
		ⓓ HTU48	ⓓ HTU48
		ⓔ HTU48	ⓔ HTU48
		ⓖ HTU48	ⓖ HTU48
		ⓗ HTU48	ⓗ HTU48
		ⓞ HTU48	ⓞ HTU48
		Ⓩ HTU48	Ⓩ HTU48
		ⓑ HTU48	ⓑ HTU48
		ⓓ HTU48	ⓓ HTU48
		ⓔ HTU48	ⓔ HTU48
		ⓖ HTU48	ⓖ HTU48
		ⓗ HTU48	ⓗ HTU48
		ⓞ HTU48	ⓞ HTU48
		Ⓩ HTU48	Ⓩ HTU48
		ⓑ HTU48	ⓑ HTU48
		ⓓ HTU48	ⓓ HTU48
		ⓔ HTU48	ⓔ HTU48
		ⓖ HTU48	ⓖ HTU48
		ⓗ HTU48	ⓗ HTU48
		ⓞ HTU48	ⓞ HTU48
		Ⓩ HTU48	Ⓩ HTU48
		ⓑ HTU48	ⓑ HTU48
		ⓓ HTU48	ⓓ HTU48
		ⓔ HTU48	ⓔ HTU48
		ⓖ HTU48	ⓖ HTU48
		ⓗ HTU48	ⓗ HTU48
		ⓞ HTU48	ⓞ HTU48
		Ⓩ HTU48	Ⓩ HTU48
		ⓑ HTU48	ⓑ HTU48
		ⓓ HTU48	ⓓ HTU48
		ⓔ HTU48	ⓔ HTU48
		ⓖ HTU48	ⓖ HTU48
		ⓗ HTU48	ⓗ HTU48
		ⓞ HTU48	ⓞ HTU48
		Ⓩ HTU48	Ⓩ HTU48
		ⓑ HTU48	ⓑ HTU48
		ⓓ HTU48	ⓓ HTU48
		ⓔ HTU48	ⓔ HTU48
		ⓖ HTU48	ⓖ HTU48
		ⓗ HTU48	ⓗ HTU48
		ⓞ HTU48	ⓞ HTU48
		Ⓩ HTU48	Ⓩ HTU48
		ⓑ HTU48	ⓑ HTU48
		ⓓ HTU48	ⓓ HTU48
		ⓔ HTU48	ⓔ HTU48
		ⓖ HTU48	ⓖ HTU48
		ⓗ HTU48	ⓗ HTU48
		ⓞ HTU48	ⓞ HTU48
		Ⓩ HTU48	Ⓩ HTU48
		ⓑ HTU48	ⓑ HTU48
		ⓓ HTU48	ⓓ HTU48
		ⓔ HTU48	ⓔ HTU48
		ⓖ HTU48	ⓖ HTU48
		ⓗ HTU48	ⓗ HTU48
		ⓞ HTU48	ⓞ HTU48
		Ⓩ HTU48	Ⓩ HTU48
		ⓑ HTU48	ⓑ HTU48
		ⓓ HTU48	ⓓ HTU48
		ⓔ HTU48	ⓔ HTU48
		ⓖ HTU48	ⓖ HTU48
		ⓗ HTU48	ⓗ HTU48
		ⓞ HTU48	ⓞ HTU48
		Ⓩ HTU48	Ⓩ HTU48
		ⓑ HTU48	ⓑ HTU48
		ⓓ HTU48	ⓓ HTU48
		ⓔ HTU48	ⓔ HTU48
		ⓖ HTU48	ⓖ HTU48
		ⓗ HTU48	ⓗ HTU48
		ⓞ HTU48	ⓞ HTU48
		Ⓩ HTU48	Ⓩ HTU48
		ⓑ HTU48	ⓑ HTU48
		ⓓ HTU48	ⓓ HTU48
		ⓔ HTU48	ⓔ HTU48
		ⓖ HTU48	ⓖ HTU48
		ⓗ HTU48	ⓗ HTU48
		ⓞ HTU48	ⓞ HTU48
		Ⓩ HTU48	Ⓩ HTU48
		ⓑ HTU48	ⓑ HTU48
		ⓓ HTU48	ⓓ HTU48
		ⓔ HTU48	ⓔ HTU48
		ⓖ HTU48	ⓖ HTU48
		ⓗ HTU48	ⓗ HTU48
		ⓞ HTU48	ⓞ HTU48
		Ⓩ HTU48	Ⓩ HTU48
		ⓑ HTU48	ⓑ HTU48
		ⓓ HTU48	ⓓ HTU48
		ⓔ HTU48	ⓔ HTU48
		ⓖ HTU48	ⓖ HTU48
		ⓗ HTU48	ⓗ HTU48
		ⓞ HTU48	ⓞ HTU48
		Ⓩ HTU48	Ⓩ HTU48
		ⓑ HTU48	ⓑ HTU48
		ⓓ HTU48	ⓓ HTU48
		ⓔ HTU48	ⓔ HTU48
		ⓖ HTU48	ⓖ HTU48
		ⓗ HTU48	ⓗ HTU48
		ⓞ HTU48	ⓞ HTU48
		Ⓩ HTU48	Ⓩ HTU48
		ⓑ HTU48	ⓑ HTU48
		ⓓ HTU48	ⓓ HTU48
		ⓔ HTU48	ⓔ HTU48
		ⓖ HTU48	ⓖ HTU48
		ⓗ HTU48	ⓗ HTU48
		ⓞ HTU48	ⓞ HTU48
		Ⓩ HTU48	Ⓩ HTU48
		ⓑ HTU48	ⓑ HTU48
		ⓓ HTU48	ⓓ HTU48
		ⓔ HTU48	ⓔ HTU48
		ⓖ HTU48	ⓖ HTU48
		ⓗ HTU48	ⓗ HTU48
		ⓞ HTU48	ⓞ HTU48
		Ⓩ HTU48	Ⓩ HTU48
		ⓑ HTU48	ⓑ HTU48
		ⓓ HTU48	ⓓ HTU48
		ⓔ HTU48	ⓔ HTU48
		ⓖ HTU48	ⓖ HTU48
		ⓗ HTU48	ⓗ HTU48
		ⓞ HTU48	ⓞ HTU48
		Ⓩ HTU48	Ⓩ HTU48
		ⓑ HTU48	ⓑ HTU48
		ⓓ HTU48	ⓓ HTU48
		ⓔ HTU48	ⓔ HTU48
		ⓖ HTU48	ⓖ HTU48
		ⓗ HTU48	ⓗ HTU48
		ⓞ HTU48	ⓞ HTU48
		Ⓩ HTU48	Ⓩ HTU48
		ⓑ HTU48	ⓑ HTU48
		ⓓ HTU48	ⓓ HTU48
		ⓔ HTU48	ⓔ HTU48
		ⓖ HTU48	ⓖ HTU48
		ⓗ HTU48	ⓗ HTU48
		ⓞ HTU4	

See Legend in Layout

Lower

Client: _____
Project: _____
Lewis Walker Residence
Model: _____
Lot / Subdivision / Street Address: _____
11394 SE CR 245
Location: _____
Lulu, FL



REV.	CLIENT INFORMATION	NOTES	BRG. SCHEDULE	HANGERS	DESIGN CRITERIA	CLIENT APPROVAL
Date	12/15/2017	Scale	NTS			
Plan Date:	10/11/2016	Drawn By	Patrick Church			
Sheet#	1 of 1	Job #	1291636			

1. Client to review overall placement plan including dimensions, roof and ceiling conditions, top chord size, overhang / cantilever length, heel heights, bearing & non-bearing wall locations and heights.
2. Client to review entry and / or other conditions that require cantiering of peaks, overhangs or cantilevers to ensure proper truss design.
3. Client to review AHU conditons such as, hung from ceiling, recessed into ceiling or attic mounted. It is the client's responsibility to inform truss plant of locations, size, and weights.
4. Client to review special conditions, such as beam loads, dropped soffit loads and skylite locations to ensure proper truss design / placement.
5. Ceiling drops and valleys not shown are to be field framed by client.
6. Hip and corner jacks not cut are to be cut in the field by others.
7. Overhangs are 2x4 or 2x6, no blocking is applied.
8. Overhangs are considered with, cut to fit in field.
9. Temporary or permanent bracing is not included in truss package.
10. Erect trusses per BCSI-B1 Summary Sheet. Prior to erecting trusses refer to sealed truss engineering sheets for additional important info.
11. It is the client's responsibility to coordinate delivery dates with truss plant/sales. Truss delivery will be on the agreed upon date..
12. Client to provide a marked location for delivery. Location must be accessible, level and clear of materials and debris. In lieu of this, trusses will be delivered in the best available location at our driver's discretion. No changes will be accepted if above criteria is not met.
13. All truss repairs must be coordinated with truss plant. Do Not Cut Any Trusses before contacting truss plant with specifics of problem.
14. No back charges or crane charges of any kind will be accepted unless specifically approved in writing by truss plant management.
15. Note: One approved layout must be returned to truss plant before fabrication / scheduling.
16. *** Upon signing you agree that you have reviewed this placement plan in its entirety.

Approved By: _____
Approval Date: _____
Requested Delivery Date: _____

Roof Loading: 20.00 TC/L, 7.0 TC/L, 0.0 BC/L, 10.00 BC/L, DOL 1.25	
Floor Loading: 40.00 TC/L, 10.00 TC/L, 0.0 BC/L, 5.0 BC/L, DOL 1.00	
T.C. Pitch : Varies	Wind Code : MWFRS / ASCE 7-10
B.C. Pitch : Flat	Design Method : FBC-2014 / TPI2007
T.C. Size : Varies	Wind Speed : 140 mph / Exp. C
Heel Hgt : Varies	Mean Hgt : 15' Min.
Bearing : Varies	Building Cal. : II
Cantilever : N / A	Importance Factor : 1.00
Overhang : 1'-4"	Enclosure Lnatl : Partially Enclosed
O.H. Cut : Plumb	Enclosure Entry : Partially Enclosed
Specing : 24" O.C.	HUS26 = Typ. Single Ply Roof Truss
HUS46 = Typ. Floor Truss	
Ⓐ HTU26	Ⓐ LSU26
Ⓑ HUS26-2	Ⓑ HHUS46
Ⓒ HUS28-3	Ⓒ HHUS48
	Ⓓ THA422
	Ⓔ THAC422
	Ⓕ MTHM
	Ⓖ SU46
	Ⓖ SUR46

Hangers are Manufactured by Simpson Strong Tie unless noted otherwise

See Legend in Layout

Upper

Client:	
Project:	Lewis Walker Residence
Model:	
Lot / Subdivision / Street Address:	11394 SE CR 245
Location:	Lulu, FL

REV.			
Date	12/15/2017	Scale	NTS
Plan Date:	10/11/2016	Drawn By	Patrick Church
Sheet#	1 of 1	Job #	1287636