



INTEGRITY METALS

Architectural Fabrication



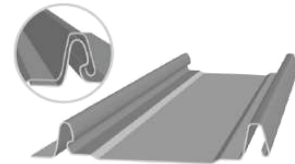
FL PRODUCT
APPROVAL

l ma awNap³/w

W'''

ds 6 gws 6 g

wl)ed



k Z V F; V' ' , SO' ' O; ' z a6 O' O; ' Z zi O Z ' O ' Hz; ' Kz j a n

k Z V L O; ' O, l 6 KO ' D ;; nC ' ; ' O V; ; 5) Ca1N" rhw z; ; ; ' ; Zn

50 ; ; , oaN a j'; jO ; ; n#O K; Z'O ; ; O Z K; ; Kz jO ; ; O; OW; OH; nG O' ; jO ; ; O;
OW; OH; nC ' O ' z 5) Ca1N6r6 z; ; ; ' ; Zn

G H O; ; F; V, a1:wL ' D Z ' D z' V Z O ' GrOn j NhI Dh

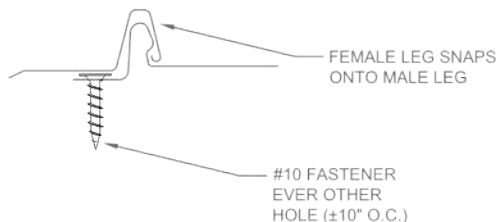
L O n(OH; # OZ c 4 O O' ³/₄ ' ; ; ,

L; z Z (, "m1 j 4 O jO ; ; ; ; z; z ; aN rVd

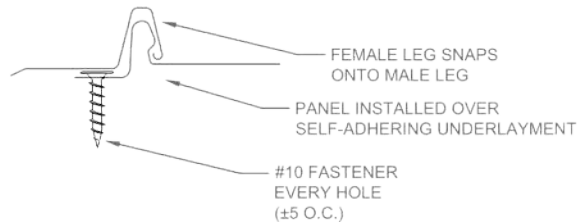
L; z Z), aNm1 j & ; ; jpOZz; ' K Z; O ; O Z' O jO ; ; ; ; z ; 1 D

50V jGj; j l rNO ' ; Z VO V O; O OH; OZ n

METHOD A



METHOD B



B O O; Z) , FO ' Z B Ki k B A' H; O; C ; i ##C

awa" BZK; O; F G; l wx / O Z 5#

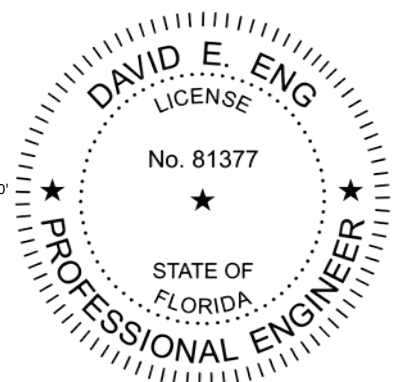
k B # VnS , maW''' C (# VnS , wwwhh

rA' H; # O; C ; rV

David E. Eng

Digitally signed by David E Eng
Contact Info:
david.eng@timberlakecove.com
Date: 2021.06.08 16:40:10-04'00'

This item has been digitally signed and sealed by D.E. Eng, PE, on the date indicated. Printed copies of this document are not considered signed and sealed and the signature must be verified on any electronic copies





C 'O V; G O; ; ,
Az' Z V O Z; V'H; Z z O Z; O; Z V 'O V; 'z 5 'ZO) 'Z' K C Z; l Nl Nla1Nh r w l p7l7vDO ; ' ; Z H 5# 3/4 ;
6aOl Npwi ; z ZaFb H; V z; ; V ' : ' 'O' ; Z H; n
& Z; O ; , C 'z VO H 'Z' KV Z; 5) Ca1N" r m a z; ; ; ' ; Zn
G ; , C 'z VO H 'Z' KV Z; 5) Ca1N" r m l z; ; ; ' ; Zn
3/4 p 3/4 j' K, Az' O; O H; ' O; Z ; O ' K; O; j; ' ' K z' K; O ; ' ; Z H VO H 'Z' KV Z; 5) Ca1aai 'Z; Z z;
' ' K j ; ; z; V Z' ' ; ' ; Z H z; O 'VOH; V Z; n
kO; (W; ' ; , Az; O jOV ; Z ; ; ' ; z; ; j V ; i ; O O i H i z; ' ' O OW; ' ; H; ; ; H ; ZK;
j O; O Z Z' ; ZK; i ' z; VO' nAz; ; j V ; O Z ; O O O H; OZ ' OH; ' ; VO; iz ; ; z O Z; V ' ' z;
Z' V; ' j z; ; V ; O Z z; ' O ; n
A; Vz 'VO F V ; O' ,
Az' Z V z O H; ; ; Z z; j ' K O Z O Z H 4 ; ; A; ' K AGAa1l "Dh
• mN: &#amx" ; ; 4" l 6rN1ph1Nphh ; Z ' z ; ' ' DO Z qh r m 6rNaph1Nphhn
F; 'K k V; ,
C O; z; O' O OH; OZ OK; a z; (GF 'j ; ; j z; ; V Z; ; ' ; j j'V'; V O Z' O O'
; ' ; ; n
(; O' ; i O O ' i z; OZ OH; ' z' ; 'Z; ; ; V' ' ; ' j z; j O ; ' K ; ' ; ; j z; O 'VOH;
' Z OZ j j 'z' z; O O ; ; Z; V'H; Zn5 j 'Z; j z; ' ; Z O O ; ; i Z; 'K ' Z OZ z O H; Z; ; ' ; Z O
; ' ; Z H 5) Ca6Nxi (GCB"i z; Z; 'K V Z; ' j V; i ' KO OH; ; nAz; ; OZ OH; O; HO; Z (GCB" p a 6 n & ; j z; ;
OH; O ; z O z; V ; ' , B V ; Z O Z V j ' Z p H ; Z; H' ' ' O Z' O ; K O z O ; Z H 'Z' KO Z'
H; V OV p ' Z OZ' Ki ; z; Z Z' Ki ' OH' b Z; ' z O ; O' ; VO' j z'Vz VzO ; ' K H j j; ' K O O
V 'Z; O'
B K' ; ; ' KO O ' O H; V ; ; Z H z; 'V; ; Z; K' ; ; j ; V ; V j'VO O H VO O z ' ; z O' K ' Z'V' n
C; 'j'VO' j 4 Z; ; Z; V; ,
FO 'Z B Ki k B O Z A' H; O; C ; i # C Z z O ; i ' z; OV ' ; O j' O VO' ; ; ' O V O O jOV ' K Z' 'H' K Z V
Z; z' ; O O' nAz; O ; ; ' ; Z z O ; i ' z; OV ' ; i O j' O VO' ; ; ' O z; ; ' ' ; Z' z; O O ; ' K
V; j z; Z V n
B V ' O Z # ' O' ,
F; 'K j Z; V O Z j V ; ' V Z; Z; V O OVz ; D z O H; V ; ; Z H z; n 5' ; VO 'j'VO' O Z z; O
Z' O z OK Z; 'K O; 'Z; z; V ; j z' ; O O' n(W; ; O; Z ; O z; ' K: O O ' 'Z; z; V ; j z'
; O O' n G O'V O; ; O OK; ' 'Z; z; V ; j z' ; O O' n
Az' ; ' ' ' ; Z V 'O V; 'z V O ' Z OZ ; ' ; ; j 5) Ca1Nh r w l i O ; ' ; Z H 3/4 ; 6aOl NpwnS ; ' z;
A' H; O; C ; z; O jOV ; z O H; ; 'H; j O V V ' i' ; ; O' i Z; 'K OZ; H z; HO; Z
z' ; O O' ; nAz' ; ' ' ' ; Z ; Z V ; ' KV 'O V; 'z 3/4 ; 6aOl Npwi O Z O ; ; ;
' ' ; Z O O ; KO Z' K ; j O V; j z' Z V n





Use this load table for structures which meet the following criteria:

Are located in **Exposure B** area

Have either a **flat roof, or gable/hip roof with max slope of 45°**

Have a mean roof height of **30 feet or less**

FL28113.1: 26ga IM100FF on 15/32" plywood

Wind	120	130	140	150	160	170	180	190	200
Zone 1:	A	A	A	A	A	A	A	A	B
Zone 2:	A	A	A	A	A	B	B	B	NR
Zone 3:	A	A	A	A	B	B	NR	NR	NR

Use this load table for structures which meet the following criteria:

Are located in **Exposure B** area

Have either a **flat roof less than 7°, hip roof with**

max slope of 45°, or gable roof with slope between 20° and 45°

Have a mean roof height of **30 feet or less**

FL28113.1: 26ga IM100FF on 15/32" plywood

Wind	120	130	140	150	160	170	180	190	200
Zone 1:	A	A	A	A	A	A	A	A	A
Zone 2:	A	A	A	A	A	A	B	B	B
Zone 3:	A	A	A	A	B	B	B	NR	NR

Use this load table for structures which meet the following criteria:

Are located in **B, C, or D exposure** area

Have either a **flat roof, or gable/hip roof with max slope of 45°**

Have a mean roof height of **30 feet or less**

FL28113.1: 26ga IM100FF on 15/32" plywood

Wind	120	130	140	150	160	170	180	190	200
Zone 1:	A	A	A	A	B	B	B	NR	NR
Zone 2:	A	B	B	NR	NR	NR	NR	NR	NR
Zone 3:	B	B	NR	NR	NR	NR	NR	NR	NR

Use this load table for structures which meet the following criteria:

Are located in **B, C, or D exposure** area

Have either a **flat roof less than 7°, hip roof with**

max slope of 45°, or gable roof with slope between 20° and 45°

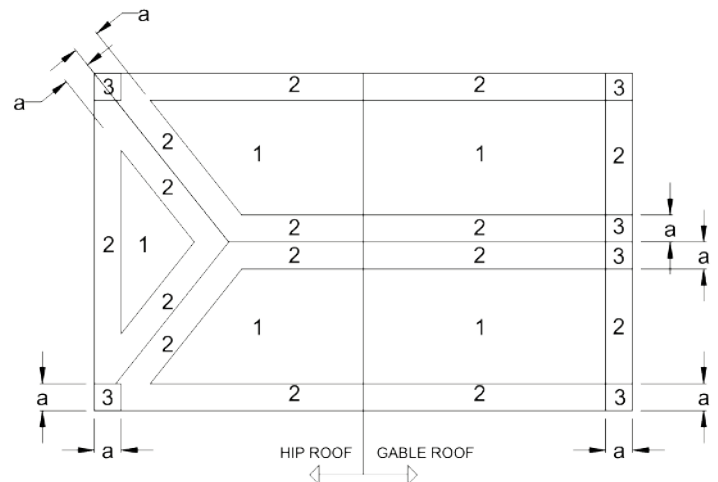
Have a mean roof height of **30 feet or less**

FL28113.1: 26ga IM100FF on 15/32" plywood

Wind	120	130	140	150	160	170	180	190	200
Zone 1:	A	A	A	A	A	B	B	NR	NR
Zone 2:	A	A	B	B	B	NR	NR	NR	NR
Zone 3:	A	B	B	NR	NR	NR	NR	NR	NR

/ k A / S (# B S O 4 B B 3 / 4 S O # / (F A () # B G

4 V' ,
G; ; V z; O 'O; OZ OH; zO O ' ; z; V ' ; ' n
F; ; ' ; z; Z; 'K ' Z ; ; Zj z; ; V VO' n
& ; z; O OVz ; ; z Z' Z'VO; Zj zO ' Z ; ; Z ' z' ; OVz j ; n
S/AB; (GCB"pa6O Z5) C L N L NOZ O"p ; V V; n5 z; OZ OH; H; i z;
VO; O O; j ; OVz ; O Z ; ; Z ' K z; O ZO Z ; apl pw,
v ; a' V Z; ; aO Za
v ; l' V Z; ; l; il iO Zl
v ; w' V Z; ; w; O Z w
C H' K z; ; V; O; OV; O i' ; Vz ; iO z; ; ; j ; Z; 'K ; j j' V; V n
C OV z; O jOV ; j j z; 'j O' i V O' V; ; Z; 'K j; ' On
('VO' ,
Az ; ; O; V ; O' ; O ' ; Z' V H' K V; O' j z; ; OZ OH; j VO;
z; z; ; ' ; Z; 'K OZ' nAz ; O' O OH; OZ j z' Z V O;
z OK; a j z' O On4 z; ; ' ; Z O OH; Z; 'K OZ O; iO Z z;
; ' ; Z; 'K OZ O; ; zO z; O OH; OZ j z; Z Vi z; z; Z V'
j j' V; j ; iO Z z; ; ' O OZ OH; VO H; 'K ; Zn
4 z; ; ' ; Z; 'K OZ O; S/A i z; z; O 'O; OZ OH; z; ; O H; ; Zn
Az ; ; ' O OZ OH; O; H Z' O; z; O O OH; OZ z OK; a z; O;
; ; ; V ; O' ; O 'VO' j z; ; OZ Oh4 VO; zO z; ; OZ OH; H;
' ; ; ; Z ; 'V z; O 'VO' j z' Z V ; zO z; O O OH; OZ z
OK; anAz ; O O OH; OZ z OK; aO ; z; V ' KZ; 'K ZO Oj z' Z V b
S/A z; ; ' O OZ OH; n



a: 10% OF LEAST HORIZONTAL DIMENSION OR 0.4h, WHICHEVER IS SMALLER, BUT NOT LESS THAN EITHER 4% OF LEAST HORIZONTAL DIMENSION OR 3FT (0.9M). OR AS DETERMINED BY DESIGN OR OTHER APPLICABLE CODE.

ROOF ZONES FOR GENERIC BUILDING

