

BUILDING AIR BALANCE SUMMARY

FLOOR NUMBER	EQUIPMENT NAME AND/OR SERVICE DESCRIPTION	AIRFLOW (CFM)	SERVICE AREA	EQUIPMENT LOCATION
1	RTU-1 OUTSIDE AIR	200	OFFICES	ROOF
1	RTU-2 OUTSIDE AIR	250	LOUNGE	ROOF
1	RTU-3 OUTSIDE AIR	100	OFFICES	ROOF
1	EF-1 EXHAUST AIR	-75	RESTROOM	CEILING
1	EF-2 EXHAUST AIR	-75	RESTROOM	CEILING
1	EF-3 EXHAUST AIR	-75	JANITOR'S CLOSET	CEILING
1	EF-4 EXHAUST AIR	-150	BREAK ROOM	CEILING
	BUILDING TOTAL	175		

NOTE: FOR REFERENCE ONLY TO COMPLY WITH THE REQUIREMENTS OF 2020 FBC MECHANICAL - SECTION 508.1.2.

VENTILATION AIR SCHEDULE

ROOM NUMBER	ROOM NAME	ROOM AREA (SF)	OCCUPANCY (PEOPLE)	AREA RATE, RA (CFM/SF)	MECHANICAL VENTILATION SECTION 403 METHOD (1)(2)				PROVIDED OA (CFM)	NOTES
					PEOPLE RATE, RP (CFM/PERSON)	EFFECTIVENESS (E2)	TOTAL REQUIRED OA (CFM)			
4	OFFICE	100	2	0.06	5	0.8	20		25	
5	OFFICE	100	2	0.06	5	0.8	20		25	
9	CORRIDOR	170	0	0.06	0	0.8	13		25	
13	COPIER	76	1	0.06	5	0.8	12		25	
15	BREAK ROOM	190	6	0.06	5	0.8	52		100	
2	LOUNGE	695	10	0.06	5	0.8	115		150	
16	TELLERS	305	5	0.06	5	0.8	54		100	
6	OFFICE	100	2	0.06	5	0.8	20		25	
7	OFFICE	100	2	0.06	5	0.8	20		25	
8	OFFICE	100	2	0.06	5	0.8	20		25	
17	TELLER WORK AREA	108	2	0.06	5	0.8	21		25	

(1) PER 2020 FBC MECHANICAL TABLE 403.3

(2) SCHEDULE IS FOR REFERENCE ONLY TO COMPLY WITH REQUIREMENTS OF 2020 FBC MECHANICAL.

THIS ITEM HAS BEEN ELECTRONICALLY
SIGNED AND SEALED BY STEVEN
ANDREW MITCHELL, P.E. ON THE DATE
ADJACENT TO THE SEAL.
PRINTED COPIES OF THIS DOCUMENT
ARE NOT CONSIDERED SIGNED AND
SEALED AND THE SIGNATURE MUST
BE VERIFIED ON ANY ELECTRONIC
COPIES.



MITCHELL, GULLEDGE ENGINEERING,
INC., 204 SW 4TH AVE., GAINESVILLE, FL,
32601, 352-745-3991 FL EB# 31501.

SUBMITTAL: CONSTRUCTION DOCUMENTS
ISSUE DATE: 03/01/2023

REVISION DESCRIPTION DATE

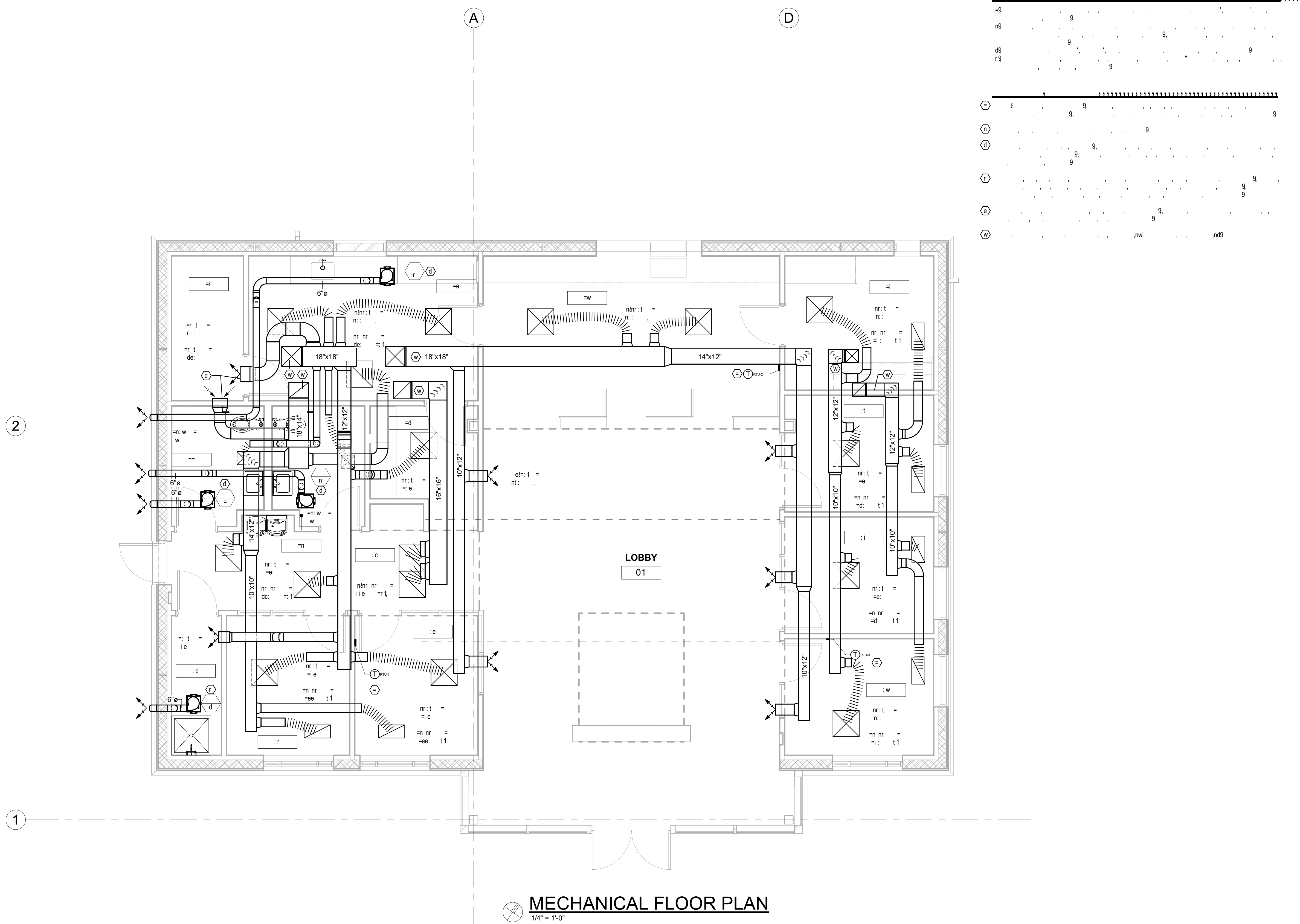
1659 W US HIGHWAY 90
LAKE CITY, FL 32055

KEY PLAN

DRAWING TITLE:

MECHANICAL FLOOR
PLAN

PROJECT NO.: 20056-00 DRAWN BY: EJD
CHECKED BY: AM



THIS ITEM HAS BEEN ELECTRONICALLY
SIGNED AND SEALED BY STEVEN
ANDREW MITCHELL, P.E., ON THE DATE
ADJACENT TO THE SEAL.
PRINTED COPIES OF THIS DOCUMENT
ARE NOT CONSIDERED SIGNED AND
SEALED AND THE SIGNATURE MUST
BE VERIFIED ON ANY ELECTRONIC
COPIES.



MITCHELL, GUILLEDGE ENGINEERING,
INC., 204 SW 4TH AVE., GAINESVILLE, FL
32601, 352-745-3991 FL EB# 31501.

SUBMITTAL: CONSTRUCTION DOCUMENTS ISSUE DATE: 03/01/2023

REVISION DESCRIPTION DATE

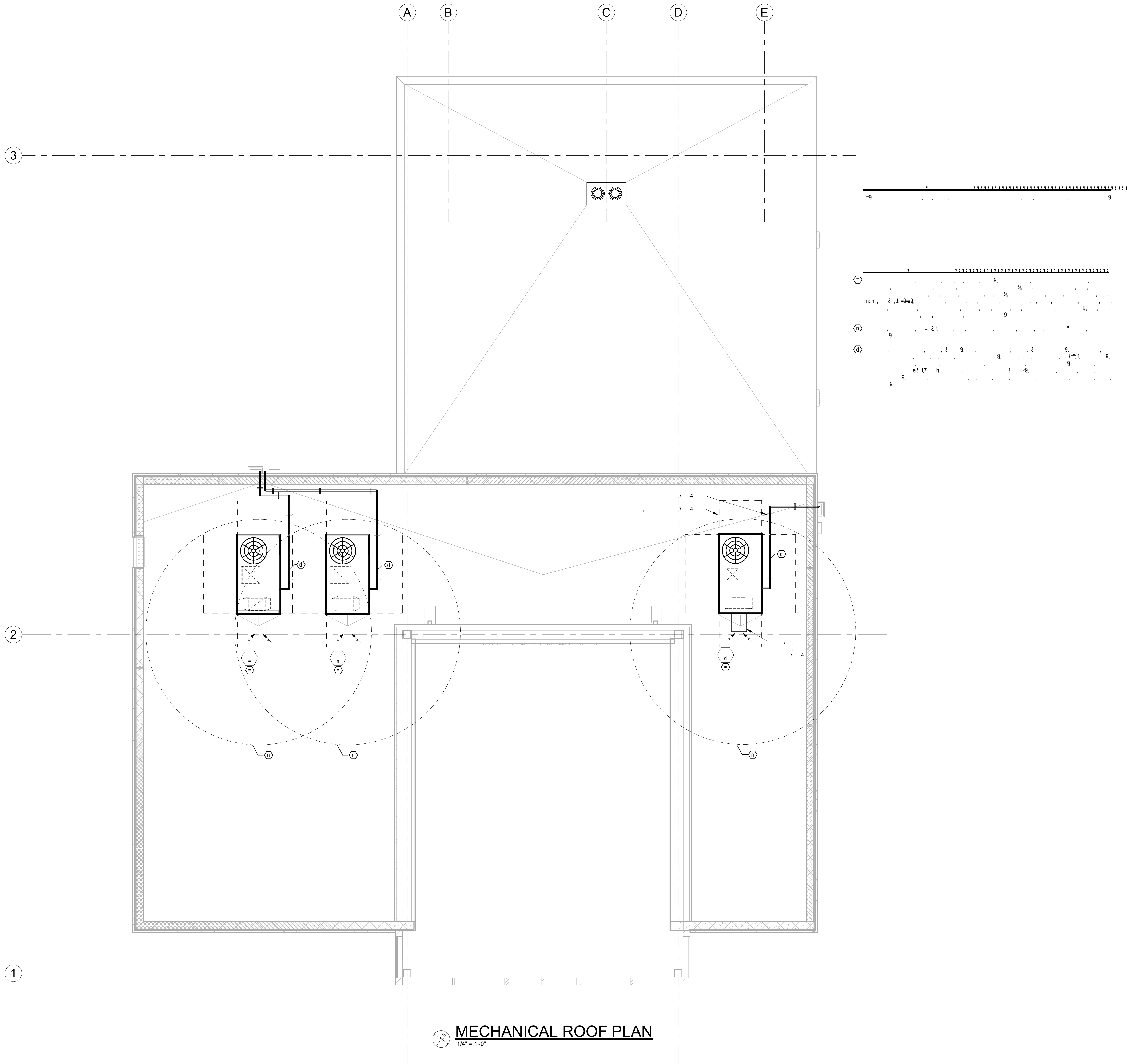
1659 W US HIGHWAY 90
LAKE CITY, FL 32055

KEY PLAN

DRAWING TITLE:

MECHANICAL ROOF PLAN

PROJECT NO.: 20056-00 DRAWN BY: EJD
CHECKED BY: AM



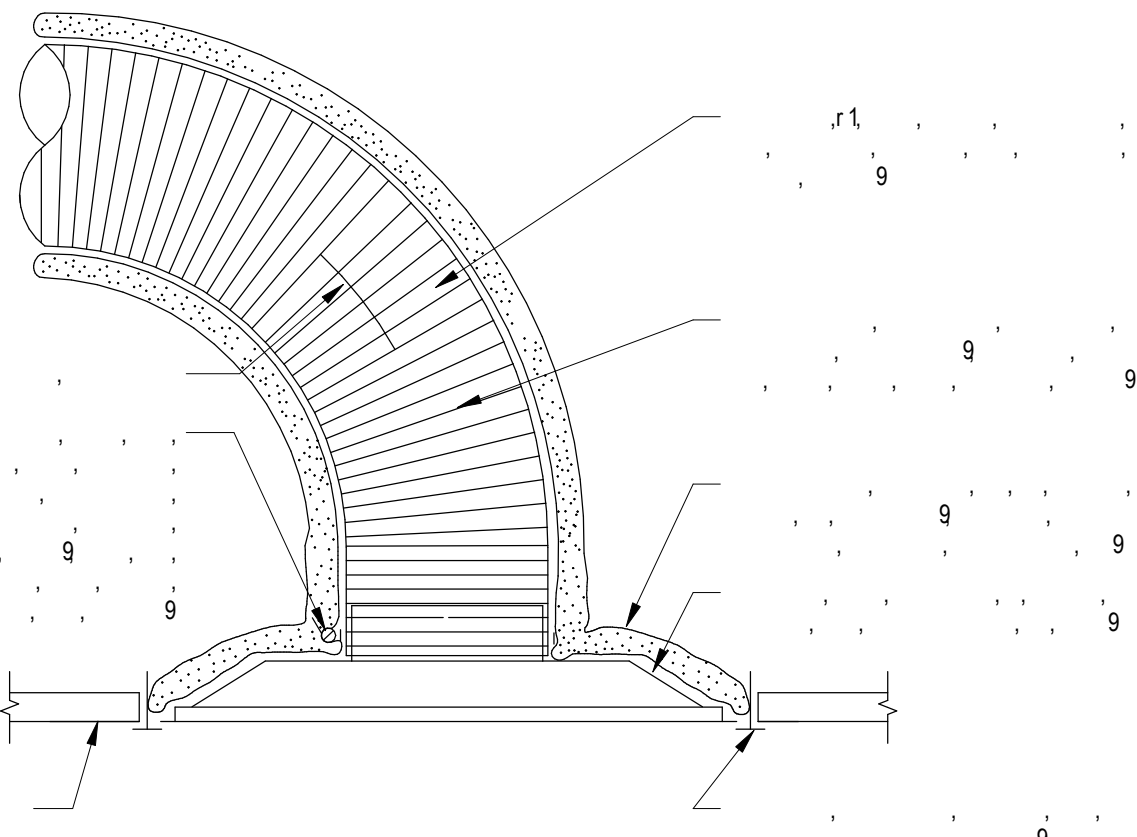
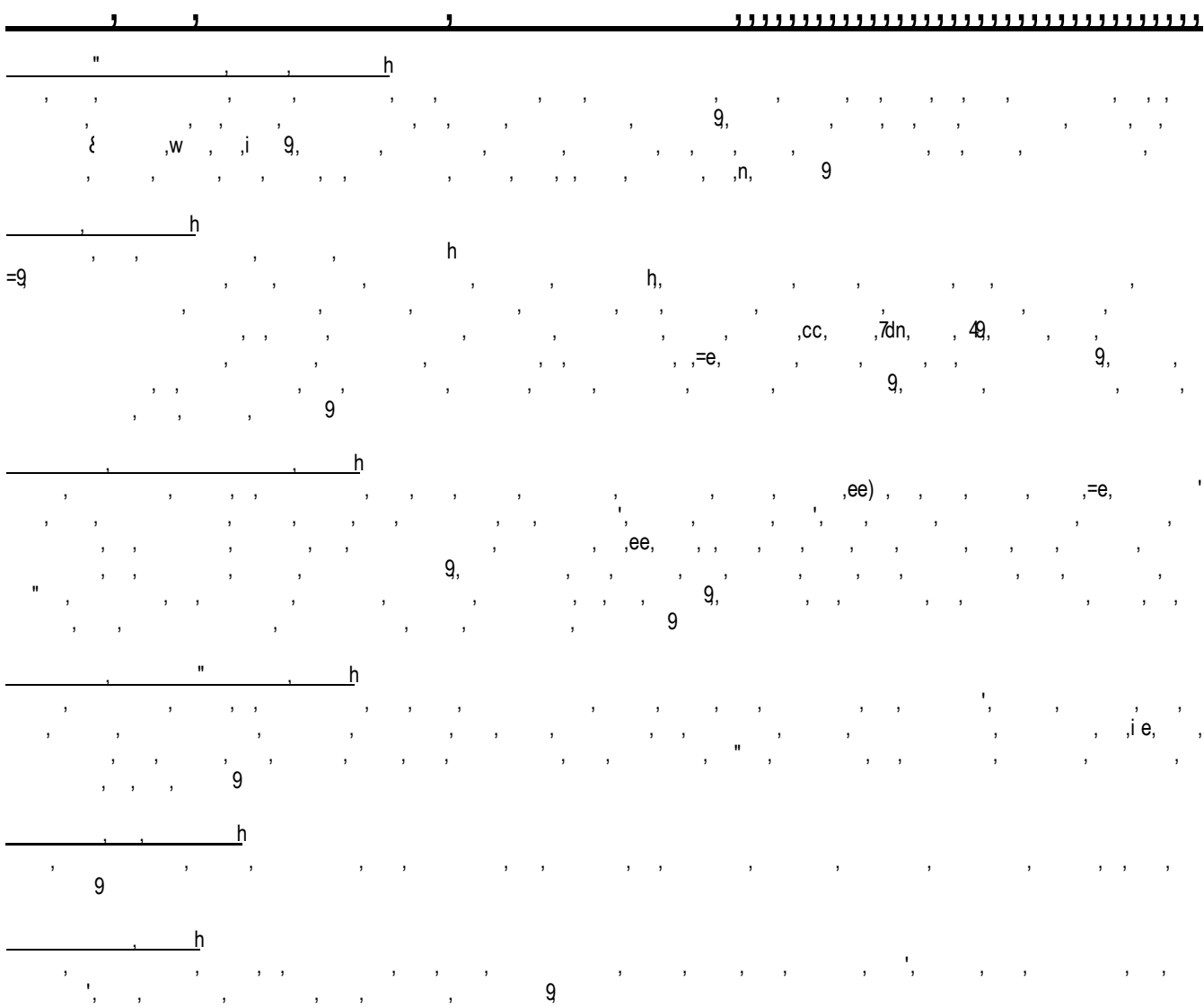
MECHANICAL ROOF PLAN
1/4" = 1'-0"

PACKAGED ROOFTOP UNIT SCHEDULE

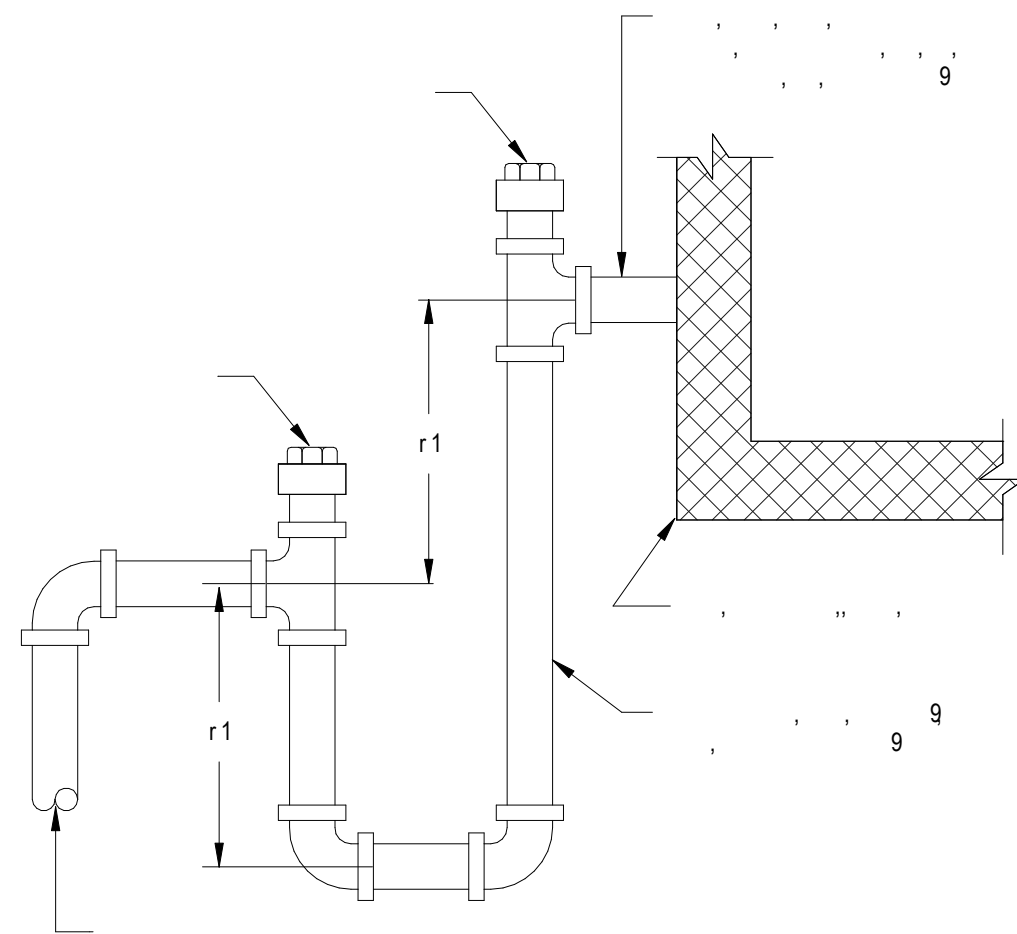
MARK	RTU-1	RTU-2	RTU-3
UNIT TYPE	PACKAGED	PACKAGED	PACKAGED
MANUFACTURER	LENNOX	LENNOX	LENNOX
MODEL NAME	HUMIDITROL	HUMIDITROL	HUMIDITROL
MODEL NUMBER	LC1060	LC1060	LC1036
SERVICE	WEST OFFICES, BREAK ROOM, RESTROOMS	LOUNGE AND TELLERS	EAST OFFICES, WORK AREA
LOCATION	ROOF	ROOF	ROOF
ORIENTATION	DOWNFLOW	DOWNFLOW	DOWNFLOW
SUPPLY AIR (MAX COOLING) (CFM)	1,600	1,800	700
SUPPLY AIR (HEATING) (CFM)	1,600	1,800	700
OUTSIDE AIR (CFM)	200	250	100
SUPPLY FAN	ECM DIRECT DRIVE	ECM DIRECT DRIVE	ECM DIRECT DRIVE
SUPPLY TSP (IN WC)	0.93	0.97	0.78
EXTERNAL SP (IN WC)	0.75	0.75	0.75
COIL EAT (DB/WB DEG F)	77.5/65	77.8/65.3	77.9/65.4
COIL LAT (DB/WB DEG F)	55/55	55/55	55/55
TOTAL CAPACITY (BTUH)	58,200	59,800	33,800
SENSIBLE CAPACITY (BTUH)	41,200	44,200	22,400
NUMBER OF COOLING STAGES	TWO	TWO	TWO
DESIGN CONDITIONS			
SUMMER OUTDOOR TEMP DB/WB (DEG F)	96/80	96/80	96/80
SUMMER INDOOR DB/WB (DEG F)	75/63	75/63	75/63
WINTER OUTDOOR TEMP (DEG F)	30	30	30
WINTER INDOOR (DEG F)	68	68	68
EFFICIENCY (EER)	12.7	12.7	13.3
SEASONAL ENERGY EFFICIENCY RATIO (SEER)	17.1	17.1	17.8
SUPPLY FAN BRAKE HORSEPOWER (BHP)	0.85	0.77	0.32
SUPPLY FAN MOTOR SIZE (HP)	1.0	1.5	0.5
ELECTRICAL (VOLTS-PHASE)	208-3	208-3	208-3
SYSTEM MCA (AMP)	49	45	25
SYSTEM MOCP (AMP)	50	45	25
MINIMUM SHORT CIRCUIT RATING (SCCR)	65,000	65,000	65,000
HOT GAS REHEAT CAPACITY (MBH)	15.4	31.5	21.9
ELECTRIC HEAT CAPACITY (KW)	15	15	7.5
ELECTRIC HEAT STAGES	SCR	SCR	SCR
WEIGHT (LBS)	762	762	762
SCHEDULE NOTES	(1)(2)(3)(4)(5)(6)(7)(8)(9)(10)(11)(12)(13)	(1)(2)(3)(4)(5)(6)(7)(8)(9)(10)(11)(12)(13)	(1)(2)(3)(4)(5)(6)(7)(8)(9)(10)(11)(12)(13)
(1) PROVIDE FACTORY MOUNTED POWER DISCONNECT AND SINGLE POINT POWER			
(2) PROVIDE MOTORIZED OUTDOOR AIR DAMPER AND WEATHER HOOD			
(3) PROVIDE PHASE PROTECTION			
(4) PROVIDE HOT GAS REHEAT FOR DEHUMIDIFICATION CONTROL			
(5) PROVIDE PROGRAMMABLE THERMOSTAT WITH 7-DAY SCHEDULING AND HUMIDITY SENSOR (BOD: LENNOX COMFORT SENSE)			
(6) PROVIDE 18" ROOF CURB			
(7) PROVIDE DIRECT DRIVE MULTI SPEED INDOOR FAN FOR VARIABLE FLOW OPERATION			
(8) PROVIDE CORROSION RESISTANT DRAIN PAN			
(9) PROVIDE DUAL INDEPENDENT REFRIGERANT CIRCUITS			
(10) PROVIDE 2" MERV 13 FILTER			
(11) PROVIDE HINGED ACCESS DOORS			
(12) PROVIDE TWO STAGED COMPRESSORS FOR SINGLE-ZONE VAV APPLICATION			
(13) PROVIDE 12 MONTH MANUFACTURER WARRANTY PLUS 24 MONTH EXTENDED WARRANTY TO COVER PARTS.			

FAN SCHEDULE

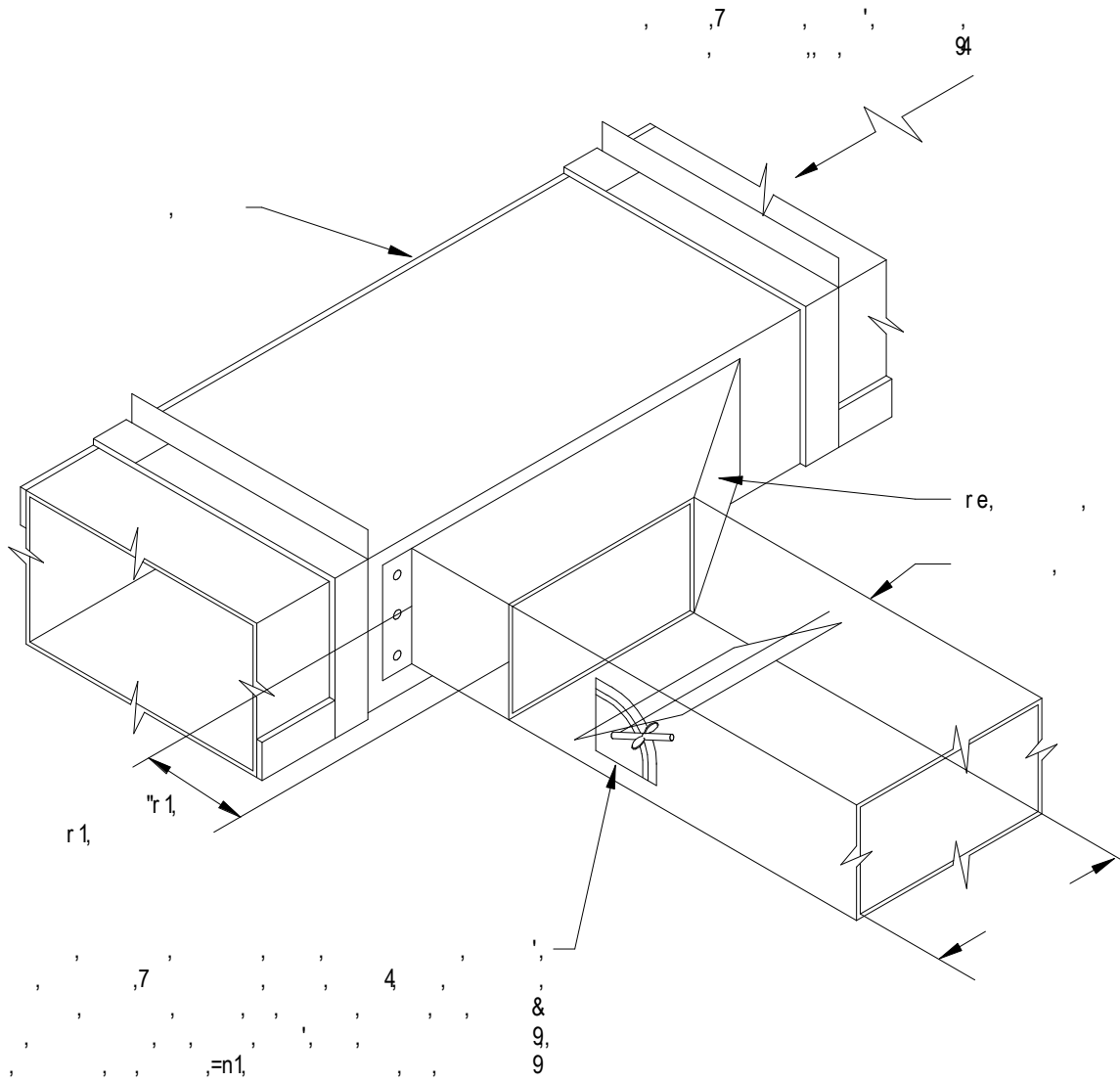
MARK	EF-1	EF-2	EF-3	EF-4
UNIT TYPE	CEILING	CEILING	CEILING	CEILING
MANUFACTURER	GREENHECK	GREENHECK	GREENHECK	GREENHECK
MODEL NUMBER	CSP-B110	CSP-B110	CSP-B110	CSP-B200
SERVICE	RESTROOM	RESTROOM	JANITOR	BREAKROOM
DRIVE	DIRECT	DIRECT	DIRECT	DIRECT
AIRFLOW (CFM)	75	75	75	150
EXTERNAL STATIC PRESSURE (IN WC)	0.5	0.5	0.5	0.5
FAN SPEED (RPM)	950	950	950	1040
FAN POWER (WATTS OR FLA)	91 WATTS	91 WATTS	91 WATTS	179 WATTS
MOTOR SIZE (HP)	FRACTIONAL	FRACTIONAL	FRACTIONAL	FRACTIONAL
VOLTS-PHASE	120-1	120-1	120-1	120-1
SOUND DATA				
FIRST OCTIVE BAND (dB)	59	59	59	59
SECOND OCTIVE BAND (dB)	71	71	71	67
THIRD OCTIVE BAND (dB)	56	56	56	44
SCHEDULE NOTES	(1)(2)(3)(4)(5)	(1)(2)(3)(4)(5)	(1)(2)(3)(4)(5)	(1)(2)(4)(5)
(1) PROVIDE DISCONNECT SWITCH				
(2) PROVIDE DIRECT DRIVE WITH SPEED CONTROLLER				
(3) PROVIDE TIMECLOCK, FAN SHALL RUN CONTINUOUSLY DURING SCHEDULED OCCUPIED HOURS.				
(4) PROVIDE THERMAL OVERLOAD.				
(5) PROVIDE WALL CAP, BACKDRAFT DAMPER, AND BIRD SCREEN.				



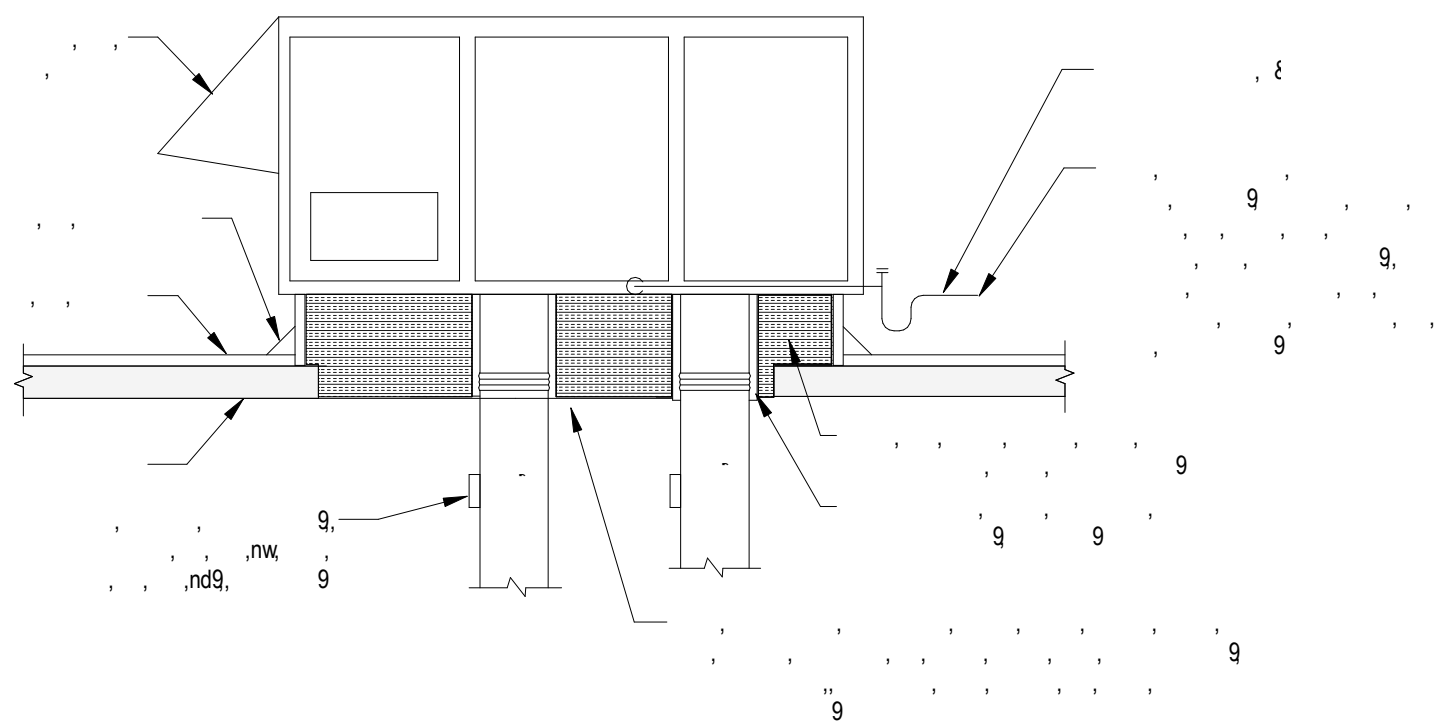
01 CEILING DIFFUSER



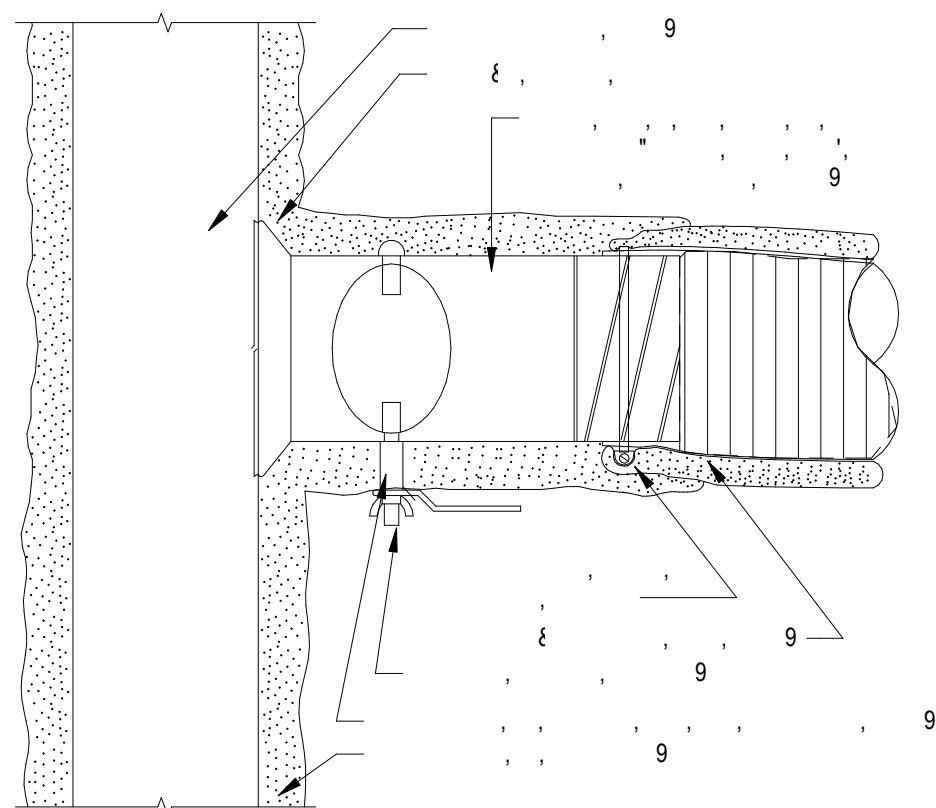
04 EQUIPMENT CONDENSATE TRAP



02 BRANCH DUCT TAKEOFF



05 PACKAGED RTU



03 FLEXIBLE DUCT TAKEOFF