

## CMU EMBEDDED TRUSS STRAP TABLE

UPLIFT LBS.	TRUSS CONNECTOR	MASONRY
< 1040	META20	7-104, 1 1/2"
< 1490	META20	10-104, 1 1/2"
< 1735	META24	14-104, 1 1/2"
< 1780	LGT2	7-174, 1 1/2" THEN IN BLOCK
< 1900	(2) META22	9-104, 1 1/2" EA.
< 2130	HHEA20	17-104, 1 1/2"
< 2310	HHEA24	21-104, 1 1/2"
< 3965	MGT	15-100 TO TRUSS
		15-100 TO ROOF

All connectors are Simpson Strongtie (u.n.o.)  
NOTE: SPECIFIED NUMBER OF FASTENERS MAY BE REDUCED PER SST CATALOG.

PRE-ENGINEERED WOOD ROOF TRUSSES @ 24" O.C. SELECT TRUSS CONNECTORS FROM STRAP TABLE PER TRUSS UPLIFT LOADS.

7/16" OSB ROOF SHEATHING UNLOCKED NAILED TO ROOF FRAMING w/ 113" X 2 3/8" RING SHANK NAILS @ 8" OC ON EDGES & INTERMEDIATE SUPPORTS 4" OC ON GABLES.

1/2" GYP 1x2 PT FURRING INSULATION BOARD R4 8" BOND BEAM POURED SOLID (3000 PSI) CONC. REINF. W/ (1) #5 REBAR CONT. 2" FROM TOP

PRE-MANUFACTURED LINTEL TO BE SIZED BY MANUFACTURER (ANY R20 LINTEL STEEL IS IN ADDITION TO BOND BEAM STEEL)

APPROVED WINDOW OF BUILDERS CHOICE OMIT SILL FOR WINDOWS PLACED FLUSH WITH EXTERIOR SURFACE

8" MASONRY CMU 3"x3" CLEAN OUT PORT AT EACH FILL CELL TYPICAL

(1) #5 VERT. STD HOOK TOP & BOTTOM IN FULLY GROUTED CELL IN CORNERS, EACH SIDE OF OPENINGS (2) #5 EACH SIDE OF OPENING LARGER THAN 12'-0", & 5'-4" OC

NOTE: VERTICAL STEEL SHOWN ON SECTION ASSUMES 2'-0" MAXIMUM BELOW SLAB & 2'-0" MAXIMUM ABOVE SLAB INCREASE VERTICAL STEEL TO (1) #5 VERTICAL @ 4'-0" OC FOR 3'-4" MAXIMUM BELOW SLAB & 8'-0" MAXIMUM ABOVE SLAB

SEE FOOTING DETAILS

W6 - SINGLE - STORY CMU WALL SECTION  
SCALE: 1/2"=1'-0" REV-06-JAN-05

REINFORCING SCHEDULE

LENGTH	BOTTOM STEEL
UP TO 5'-10"	(2) - #3 REBAR
UP TO 10'-0"	(2) - #4 REBAR
UP TO 14'-0"	(2) - #5 REBAR
UP TO 19'-4"	(2) - #7 REBAR

W22 - TYPICAL FILLED LINTEL ASSEMBLY DETAIL  
SCALE: 1/2"=1'-0" REV-08-JAN-05

REINFORCING SCHEDULE

LENGTH	BOTTOM STEEL
UP TO 5'-10"	(2) - #3 REBAR
UP TO 10'-0"	(2) - #4 REBAR
UP TO 14'-0"	(2) - #5 REBAR
UP TO 19'-4"	(2) - #7 REBAR

W30 - WOOD PORCH HEADER AT CMU WALL  
SCALE: 1/2"=1'-0" REV-24-JUL-04

PRE-ENGINEERED WOOD ROOF TRUSSES @ 24" O.C. SELECT TRUSS CONNECTORS FROM STRAP TABLE PER TRUSS UPLIFT LOADS

7/16" OSB ROOF SHEATHING UNLOCKED NAILED TO ROOF FRAMING w/ 113" X 2 3/8" RING SHANK NAILS @ 8" OC ON EDGES & INTERMEDIATE SUPPORTS 4" OC ON GABLES

ATTACH PORCH BEAM TO COLUMN w/ SIMPSON HHETA20

12x12 CMU COLUMN BLOCK GROUTED SOLID

(2) #5 VERT. WITH STD HOOK IN FOOTING

4" CONCRETE SLAB 2500 - PSI @ 28 DAYS

6"x6" W14XW14 W.W.M. PLACED @ 2" DEPTH ON CHAIRS OR FIBERMESH

TERMITE TREATED FILL, EA. LIFT COMPACTED TO MIN 95% MOD. PROCTOR

(4) #5 EACH WAY

2'-8" X 2'-8" X 1'-0" PAD FOOTING

W51 - CMU PORCH COLUMN  
SCALE: 1/2"=1'-0" REV-24-JUL-04

PRE-ENGINEERED WOOD ROOF TRUSSES @ 24" O.C. SELECT TRUSS CONNECTORS FROM STRAP TABLE PER TRUSS UPLIFT LOADS

7/16" OSB ROOF SHEATHING UNLOCKED NAILED TO ROOF FRAMING w/ 113" X 2 3/8" RING SHANK NAILS @ 8" OC ON EDGES & INTERMEDIATE SUPPORTS 4" OC ON GABLES

ATTACH PORCH BEAM TO COLUMN w/ SIMPSON HHETA20

12x12 CMU COLUMN BLOCK GROUTED SOLID

(2) #5 VERT. WITH STD HOOK IN FOOTING

4" CONCRETE SLAB 2500 - PSI @ 28 DAYS

6"x6" W14XW14 W.W.M. PLACED @ 2" DEPTH ON CHAIRS OR FIBERMESH

TERMITE TREATED FILL, EA. LIFT COMPACTED TO MIN 95% MOD. PROCTOR

(4) #5 EACH WAY

2'-8" X 2'-8" X 1'-0" PAD FOOTING

W51 - CMU PORCH COLUMN  
SCALE: 1/2"=1'-0" REV-24-JUL-04

PRE-ENGINEERED WOOD ROOF TRUSSES @ 24" O.C. SELECT TRUSS CONNECTORS FROM STRAP TABLE PER TRUSS UPLIFT LOADS

7/16" OSB ROOF SHEATHING UNLOCKED NAILED TO ROOF FRAMING w/ 113" X 2 3/8" RING SHANK NAILS @ 8" OC ON EDGES & INTERMEDIATE SUPPORTS 4" OC ON GABLES

ATTACH PORCH BEAM TO COLUMN w/ SIMPSON HHETA20

12x12 CMU COLUMN BLOCK GROUTED SOLID

(2) #5 VERT. WITH STD HOOK IN FOOTING

4" CONCRETE SLAB 2500 - PSI @ 28 DAYS

6"x6" W14XW14 W.W.M. PLACED @ 2" DEPTH ON CHAIRS OR FIBERMESH

TERMITE TREATED FILL, EA. LIFT COMPACTED TO MIN 95% MOD. PROCTOR

(4) #5 EACH WAY

2'-8" X 2'-8" X 1'-0" PAD FOOTING

W51 - CMU PORCH COLUMN  
SCALE: 1/2"=1'-0" REV-24-JUL-04

PRE-ENGINEERED WOOD ROOF TRUSSES @ 24" O.C. SELECT TRUSS CONNECTORS FROM STRAP TABLE PER TRUSS UPLIFT LOADS

7/16" OSB ROOF SHEATHING UNLOCKED NAILED TO ROOF FRAMING w/ 113" X 2 3/8" RING SHANK NAILS @ 8" OC ON EDGES & INTERMEDIATE SUPPORTS 4" OC ON GABLES

ATTACH PORCH BEAM TO COLUMN w/ SIMPSON HHETA20

12x12 CMU COLUMN BLOCK GROUTED SOLID

(2) #5 VERT. WITH STD HOOK IN FOOTING

4" CONCRETE SLAB 2500 - PSI @ 28 DAYS

6"x6" W14XW14 W.W.M. PLACED @ 2" DEPTH ON CHAIRS OR FIBERMESH

TERMITE TREATED FILL, EA. LIFT COMPACTED TO MIN 95% MOD. PROCTOR

(4) #5 EACH WAY

2'-8" X 2'-8" X 1'-0" PAD FOOTING

W51 - CMU PORCH COLUMN  
SCALE: 1/2"=1'-0" REV-24-JUL-04

PRE-ENGINEERED WOOD ROOF TRUSSES @ 24" O.C. SELECT TRUSS CONNECTORS FROM STRAP TABLE PER TRUSS UPLIFT LOADS

7/16" OSB ROOF SHEATHING UNLOCKED NAILED TO ROOF FRAMING w/ 113" X 2 3/8" RING SHANK NAILS @ 8" OC ON EDGES & INTERMEDIATE SUPPORTS 4" OC ON GABLES

ATTACH PORCH BEAM TO COLUMN w/ SIMPSON HHETA20

12x12 CMU COLUMN BLOCK GROUTED SOLID

(2) #5 VERT. WITH STD HOOK IN FOOTING

4" CONCRETE SLAB 2500 - PSI @ 28 DAYS

6"x6" W14XW14 W.W.M. PLACED @ 2" DEPTH ON CHAIRS OR FIBERMESH

TERMITE TREATED FILL, EA. LIFT COMPACTED TO MIN 95% MOD. PROCTOR

(4) #5 EACH WAY

2'-8" X 2'-8" X 1'-0" PAD FOOTING

W51 - CMU PORCH COLUMN  
SCALE: 1/2"=1'-0" REV-24-JUL-04

PRE-ENGINEERED WOOD ROOF TRUSSES @ 24" O.C. SELECT TRUSS CONNECTORS FROM STRAP TABLE PER TRUSS UPLIFT LOADS

7/16" OSB ROOF SHEATHING UNLOCKED NAILED TO ROOF FRAMING w/ 113" X 2 3/8" RING SHANK NAILS @ 8" OC ON EDGES & INTERMEDIATE SUPPORTS 4" OC ON GABLES

ATTACH PORCH BEAM TO COLUMN w/ SIMPSON HHETA20

12x12 CMU COLUMN BLOCK GROUTED SOLID

(2) #5 VERT. WITH STD HOOK IN FOOTING

4" CONCRETE SLAB 2500 - PSI @ 28 DAYS

6"x6" W14XW14 W.W.M. PLACED @ 2" DEPTH ON CHAIRS OR FIBERMESH

TERMITE TREATED FILL, EA. LIFT COMPACTED TO MIN 95% MOD. PROCTOR

(4) #5 EACH WAY

2'-8" X 2'-8" X 1'-0" PAD FOOTING

W51 - CMU PORCH COLUMN  
SCALE: 1/2"=1'-0" REV-24-JUL-04

PRE-ENGINEERED WOOD ROOF TRUSSES @ 24" O.C. SELECT TRUSS CONNECTORS FROM STRAP TABLE PER TRUSS UPLIFT LOADS

7/16" OSB ROOF SHEATHING UNLOCKED NAILED TO ROOF FRAMING w/ 113" X 2 3/8" RING SHANK NAILS @ 8" OC ON EDGES & INTERMEDIATE SUPPORTS 4" OC ON GABLES

ATTACH PORCH BEAM TO COLUMN w/ SIMPSON HHETA20

12x12 CMU COLUMN BLOCK GROUTED SOLID

(2) #5 VERT. WITH STD HOOK IN FOOTING

4" CONCRETE SLAB 2500 - PSI @ 28 DAYS

6"x6" W14XW14 W.W.M. PLACED @ 2" DEPTH ON CHAIRS OR FIBERMESH

TERMITE TREATED FILL, EA. LIFT COMPACTED TO MIN 95% MOD. PROCTOR

(4) #5 EACH WAY

2'-8" X 2'-8" X 1'-0" PAD FOOTING

W51 - CMU PORCH COLUMN  
SCALE: 1/2"=1'-0" REV-24-JUL-04

PRE-ENGINEERED WOOD ROOF TRUSSES @ 24" O.C. SELECT TRUSS CONNECTORS FROM STRAP TABLE PER TRUSS UPLIFT LOADS

7/16" OSB ROOF SHEATHING UNLOCKED NAILED TO ROOF FRAMING w/ 113" X 2 3/8" RING SHANK NAILS @ 8" OC ON EDGES & INTERMEDIATE SUPPORTS 4" OC ON GABLES

ATTACH PORCH BEAM TO COLUMN w/ SIMPSON HHETA20

12x12 CMU COLUMN BLOCK GROUTED SOLID

(2) #5 VERT. WITH STD HOOK IN FOOTING

4" CONCRETE SLAB 2500 - PSI @ 28 DAYS

6"x6" W14XW14 W.W.M. PLACED @ 2" DEPTH ON CHAIRS OR FIBERMESH

TERMITE TREATED FILL, EA. LIFT COMPACTED TO MIN 95% MOD. PROCTOR

(4) #5 EACH WAY

2'-8" X 2'-8" X 1'-0" PAD FOOTING

W51 - CMU PORCH COLUMN  
SCALE: 1/2"=1'-0" REV-24-JUL-04

PRE-ENGINEERED WOOD ROOF TRUSSES @ 24" O.C. SELECT TRUSS CONNECTORS FROM STRAP TABLE PER TRUSS UPLIFT LOADS

7/16" OSB ROOF SHEATHING UNLOCKED NAILED TO ROOF FRAMING w/ 113" X 2 3/8" RING SHANK NAILS @ 8" OC ON EDGES & INTERMEDIATE SUPPORTS 4" OC ON GABLES

ATTACH PORCH BEAM TO COLUMN w/ SIMPSON HHETA20

12x12 CMU COLUMN BLOCK GROUTED SOLID

(2) #5 VERT. WITH STD HOOK IN FOOTING

4" CONCRETE SLAB 2500 - PSI @ 28 DAYS

6"x6" W14XW14 W.W.M. PLACED @ 2" DEPTH ON CHAIRS OR FIBERMESH

TERMITE TREATED FILL, EA. LIFT COMPACTED TO MIN 95% MOD. PROCTOR

(4) #5 EACH WAY

2'-8" X 2'-8" X 1'-0" PAD FOOTING

W51 - CMU PORCH COLUMN  
SCALE: 1/2"=1'-0" REV-24-JUL-04

PRE-ENGINEERED WOOD ROOF TRUSSES @ 24" O.C. SELECT TRUSS CONNECTORS FROM STRAP TABLE PER TRUSS UPLIFT LOADS

7/16" OSB ROOF SHEATHING UNLOCKED NAILED TO ROOF FRAMING w/ 113" X 2 3/8" RING SHANK NAILS @ 8" OC ON EDGES & INTERMEDIATE SUPPORTS 4" OC ON GABLES

ATTACH PORCH BEAM TO COLUMN w/ SIMPSON HHETA20

12x12 CMU COLUMN BLOCK GROUTED SOLID

(2) #5 VERT. WITH STD HOOK IN FOOTING

4" CONCRETE SLAB 2500 - PSI @ 28 DAYS

6"x6" W14XW14 W.W.M. PLACED @ 2" DEPTH ON CHAIRS OR FIBERMESH

TERMITE TREATED FILL, EA. LIFT COMPACTED TO MIN 95% MOD. PROCTOR

(4) #5 EACH WAY

2'-8" X 2'-8" X 1'-0" PAD FOOTING

W51 - CMU PORCH COLUMN  
SCALE: 1/2"=1'-0" REV-24-JUL-04

PRE-ENGINEERED WOOD ROOF TRUSSES @ 24" O.C. SELECT TRUSS CONNECTORS FROM STRAP TABLE PER TRUSS UPLIFT LOADS

7/16" OSB ROOF SHEATHING UNLOCKED NAILED TO ROOF FRAMING w/ 113" X 2 3/8" RING SHANK NAILS @ 8" OC ON EDGES & INTERMEDIATE SUPPORTS 4" OC ON GABLES

ATTACH PORCH BEAM TO COLUMN w/ SIMPSON HHETA20

12x12 CMU COLUMN BLOCK GROUTED SOLID

(2) #5 VERT. WITH STD HOOK IN FOOTING

4" CONCRETE SLAB 2500 - PSI @ 28 DAYS

6"x6" W14XW14 W.W.M. PLACED @ 2" DEPTH ON CHAIRS OR FIBERMESH

TERMITE TREATED FILL, EA. LIFT COMPACTED TO MIN 95% MOD. PROCTOR

(4) #5 EACH WAY

2'-8" X 2'-8" X 1'-0" PAD FOOTING

W51 - CMU PORCH COLUMN  
SCALE: 1/2"=1'-0" REV-24-JUL-04

PRE-ENGINEERED WOOD ROOF TRUSSES @ 24" O.C. SELECT TRUSS CONNECTORS FROM STRAP TABLE PER TRUSS UPLIFT LOADS

7/16" OSB ROOF SHEATHING UNLOCKED NAILED TO ROOF FRAMING w/ 113" X 2 3/8" RING SHANK NAILS @ 8" OC ON EDGES & INTERMEDIATE SUPPORTS 4" OC ON GABLES

ATTACH PORCH BEAM TO COLUMN w/ SIMPSON HHETA20

12x12 CMU COLUMN BLOCK GROUTED SOLID

(2) #5 VERT. WITH STD HOOK IN FOOTING

4" CONCRETE SLAB 2500 - PSI @ 28 DAYS

6"x6" W14XW14 W.W.M. PLACED @ 2" DEPTH ON CHAIRS OR FIBERMESH

TERMITE TREATED FILL, EA. LIFT COMPACTED TO MIN 95% MOD. PROCTOR

(4) #5 EACH WAY

2'-8" X 2'-8" X 1'-0" PAD FOOTING

W51 - CMU PORCH COLUMN  
SCALE: 1/2"=1'-0" REV-24-JUL-04

PRE-ENGINEERED WOOD ROOF TRUSSES @ 24" O.C. SELECT TRUSS CONNECTORS FROM STRAP TABLE PER TRUSS UPLIFT LOADS

7/16" OSB ROOF SHEATHING UNLOCKED NAILED TO ROOF FRAMING w/ 113" X 2 3/8" RING SHANK NAILS @ 8" OC ON EDGES & INTERMEDIATE SUPPORTS 4" OC ON GABLES

ATTACH PORCH BEAM TO COLUMN w/ SIMPSON HHETA20

12x12 CMU COLUMN BLOCK GROUTED SOLID

(2) #5 VERT. WITH STD HOOK IN FOOTING

4" CONCRETE SLAB 2500 - PSI @ 28 DAYS

6"x6" W14XW14 W.W.M. PLACED @ 2" DEPTH ON CHAIRS OR FIBERMESH

TERMITE TREATED FILL, EA. LIFT COMPACTED TO MIN 95% MOD. PROCTOR

(4) #5 EACH WAY

2'-8" X 2'-8" X 1'-0" PAD FOOTING

W51 - CMU PORCH COLUMN  
SCALE: 1/2"=1'-0" REV-24-JUL-04

PRE-ENGINEERED WOOD ROOF TRUSSES @ 24" O.C. SELECT TRUSS CONNECTORS FROM STRAP TABLE PER TRUSS UPLIFT LOADS

7/16" OSB ROOF SHEATHING UNLOCKED NAILED TO ROOF FRAMING w/ 113" X 2 3/8" RING SHANK NAILS @ 8" OC ON EDGES & INTERMEDIATE SUPPORTS 4" OC ON GABLES

ATTACH PORCH BEAM TO COLUMN w/ SIMPSON HHETA20

12x12 CMU COLUMN BLOCK GROUTED SOLID

(2) #5 VERT. WITH STD HOOK IN FOOTING

4" CONCRETE SLAB 2500 - PSI @ 28 DAYS

6"x6" W14XW14 W.W.M. PLACED @ 2" DEPTH ON CHAIRS OR FIBERMESH

TERMITE TREATED FILL, EA. LIFT COMPACTED TO MIN 95% MOD. PROCTOR

(4) #5 EACH WAY

2'-8" X 2'-8" X 1'-0" PAD FOOTING

W51 - CMU PORCH COLUMN  
SCALE: 1/2"=1'-0" REV-24-JUL-04

PRE-ENGINEERED WOOD ROOF TRUSSES @ 24" O.C. SELECT TRUSS CONNECTORS FROM STRAP TABLE PER TRUSS UPLIFT LOADS

7/16" OSB ROOF SHEATHING UNLOCKED NAILED TO ROOF FRAMING w/ 113" X 2 3/8" RING SHANK NAILS @ 8" OC ON EDGES & INTERMEDIATE SUPPORTS 4" OC ON GABLES

ATTACH PORCH BEAM TO COLUMN w/ SIMPSON HHETA20

12x12 CMU COLUMN BLOCK GROUTED SOLID

(2) #5 VERT. WITH STD HOOK IN FOOTING

4" CONCRETE SLAB 2500 - PSI @ 28 DAYS

6"x6" W14XW14 W.W.M. PLACED @ 2" DEPTH ON CHAIRS OR FIBERMESH

TERMITE TREATED FILL, EA. LIFT COMPACTED TO MIN 95% MOD. PROCTOR

(4) #5 EACH WAY

2'-8" X 2'-8" X 1'-0" PAD FOOTING

W51 - CMU PORCH COLUMN  
SCALE: 1/2"=1'-0" REV-24-JUL-04</



FIBERGLASS SHINGLES OVER 15 LB. FELT  
(ON 25 YR. ARCH. SHINGLES) OVER 1/2" OSB  
NOTE: ALL SHINGLES ARE FUNGUS RESISTANT

HURRICANE STRAP EMBEDDED  
IN CONC. LINTEL

HURRICANE TIES @ EACH END OF  
TRUSS. SEE TRUSS SCHEDULE  
FOR MANUFACTURER & MODEL NUMBER.  
ACTUAL TRUSS UPLIFT TO BE IDENTIFIED  
BY TRUSS MANUFACTURER

ALUMINUM EAVE DRIP

ALUMINUM FASCIA OVER  
2x6 FASCIA BOARD

CONT. PERFORATED  
ALUMINUM SOFFIT  
WITH EDGE TRIM

SEALANT

VARIES SEE ELEV.  
SILL HEIGHT

PRE-DYED ACROCRETE  
OVER STUCCO

FIN. GRADE ( VARIES )  
SLOPE AWAY FROM BLDG.

#5 VERTICAL REINFORCEMENT  
TIED TO TIEBEAM FROM FOOTING.  
PLACE 1 EACH SIDE OF OPENINGS  
& (1) AT EACH CORNER. FOR REST  
OF WALLS, SEE WIND LOAD CALCS.  
NOTES.

ENGINEERED ROOF TRUSS  
@ 24" O.C. W/ METAL SEATS

8'-0" A.F.F.  
TRUSS BEARING

R-30 FIBERGLASS INSULATION

1/2" IMPERIAL BOARD

GALV. METAL TRUSS SHIELD

8'-8" A.F.F.  
WINDOW HEAD HT.

CONTINUOUS FIRE BLOCKING/NAILER

8" TIE BEAM W/ (1) #5'S CONT. W/2'-0" BEND

8"x8" PRE-CAST  
LINTEL

DEAD WOOD ALL 4 SIDES  
& WINDOW HEAD, TYP.

WINDOW, SEE SCHEDULE  
FOR SIZE & TYPE

CULTURED MARBLE SILL

PRECAST CONC. SILL WITH DRIP

8" CMU WALL

1/2" IMPERIAL BOARD ON  
3/4" P.T. OVER 1/4" R-MAX  
INS. BOARD

P.T. 1x4 CONTINUOUS NAILER

3" WOOD BASE

4" FREE FLOATING SLAB WITH 1/2"  
EXPANSION JOINT AROUND PERIMETER  
W/FIBER REINFORCED CONCRETE OVER  
6 MIL VAPOR BARRIER

0'-0" A.F.F.  
FINISHED FLOOR

20" WIDE X 10" HIGH CONT.  
FOOTING W/ (3) #5'S CONT.  
REINFORCEMENT, TYP.

VARIES (12" BELOW GRADE MIN.)  
BOTTOM OF SLAB

95% MECH. COMPACTED,  
TERMITE TREATED EARTH FILL

UNDISTURBED SOIL

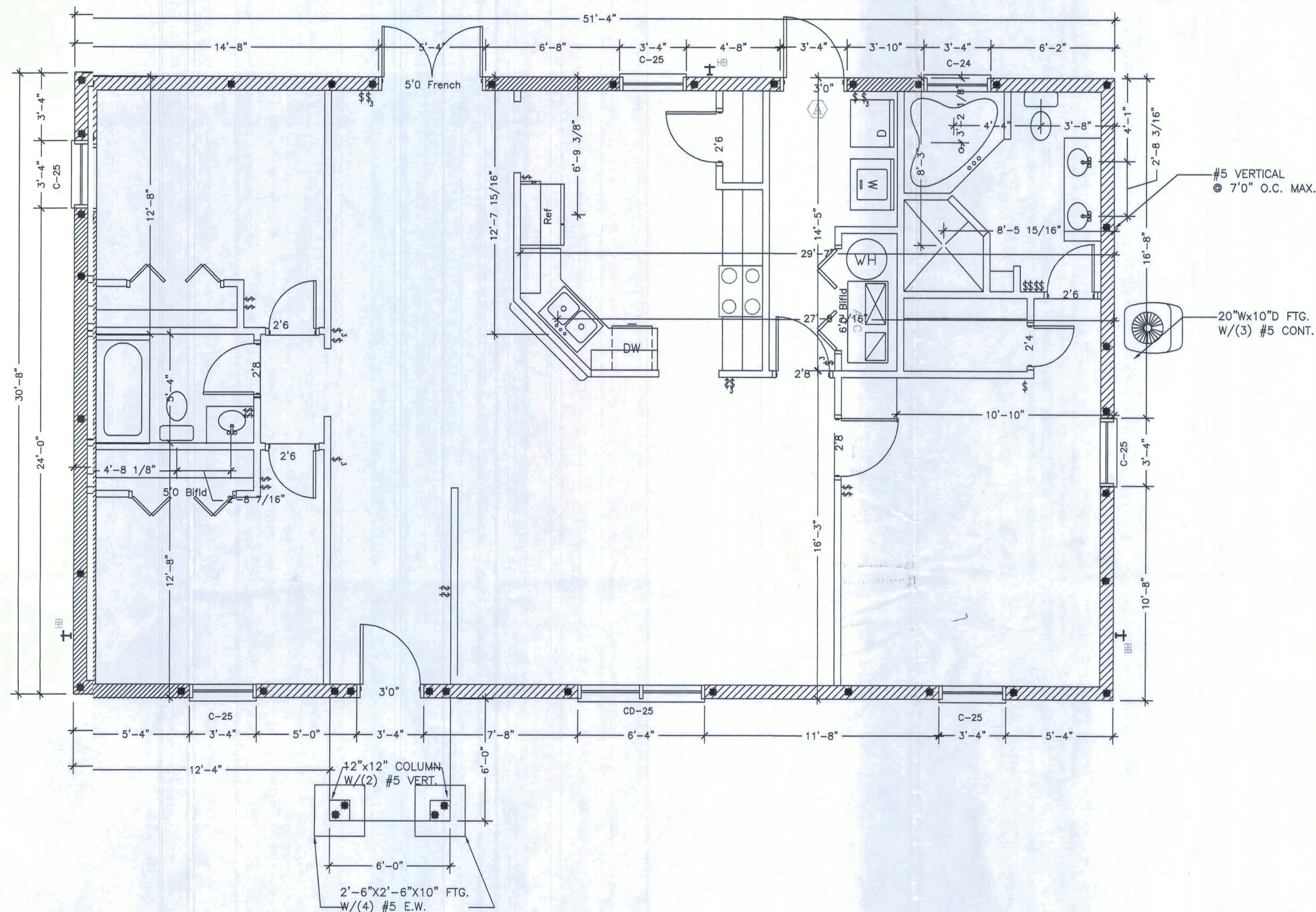
## TYPICAL WALL SECTION

SCALE: 3/4"=1'-0"

ROUGH MASONRY/FRAME OPENING SCHEDULE	
COMMODITY SIZES	ROUGH OPENING (WxH)
UNIT CALL SIZE	1/2" FLANGE MASONRY (2BY)
C-1/2 32	28-3/4x26-7/8
C-32	55-3/8x26-7/8
C- 1/2 33	28-3/4x39-1/8
C-23	39-1/4x39-1/8
C-33	55-3/8x39-1/8
C-1/2 34	28-3/4x51-1/2
C-24	39-1/4x51-1/2
C-34	55-3/8x51-1/2
C-15	21-3/8x63-7/8
C-1/2 35	28-3/4x63-7/8
C-25	39-1/4x63-7/8
C-35	55-3/8x63-7/8
C-16	21-3/8x77-5/8
CD-24	76-1/4x51-1/2
CD-34	108-1/2x39-1/8
CD-25	76-1/4x63-7/8
CD-35	108-1/2x63-7/8
ARCH	48-1/4x37-1/2

### LINTEL SCHEDULE

MASONRY OPENING	LINTEL MARK	LINTEL WIDTH	LINTEL HEIGHT	TOP BARS	BOTTOM BARS
up to 4'6"	A	7 5/8"	16"	none	(2) #3
up to 9'	B	7 5/8"	16"	(2) #2	(2) #4
9' Front Window	*B	7 5/8"	16"	(2) #4	(2) #6
16' Garage Door	*B	7 5/8"	16"	(2) #4	(2) #6



## FOUNDATION PLAN

SCALE: 1/4"=1'-0"

### SHEAR WALLS QUANTITY

TRANSVERSAL SHEARWALLS = 00'-0"

LONGITUDINAL SHEARWALLS = 00'-0"

### MECHANICAL EQUIPMENT SCHEDULE

EQUIPMENT:	TYPE:	SIZE/RATING:
AIR COND.	ELEC	42 CAP./12 SEER
HEATING	ELEC	42 CAP./7.65 SEER
WATER HEATER	ELEC	40 GAL./0.97 EFF.



HOUSE CRAFT HOMES, L.L.C.  
12523 NW U.S. Hwy. 441 - Alachua, FL 32615  
Phone: (386) 462-5323/FAX: (386) 462-1509

Job name: BROWN	
Model: CUSTOM	Type: FOUNDATION
Location:	Drawn By: J.D.H.
Checked By: J.D.H.	Revision Date:
Scale: 1/4"=1'	Date: 3/15/11 Sheet: 2 of 4



Client Name: BROWN Model: Custom

BANK: First Federal LOAN TYPE: ☐ Cash  
☐ Conventional  
☒ F.H.A.  
☐ V.A.

CABINET COLOR SELECTIONS:  
Kitchen: 7732-46 buttermilk granite ETCHINGS FINISH  
Countertop: 7732-46 buttermilk granite ETCHINGS FINISH  
Cabinet Base: Flourence cordovan chocolate  
Master Bath: same as kitchen  
Countertop: same as kitchen  
Cabinet Base: same as kitchen  
Hall Bath: same as above  
Countertop: same as above  
Cabinet Base: same as above

Toilets: white  
Master: white  
Hall: white  
Other: white

NOTES:  
ONE PIECE SHOWER TUB  
White for hall bath

BATHROOM TILE SELECTION:  
Master Bath: 3x12 durado FD03  
Shower Floor: 2x2 durado FD03  
Grout: #156 Fawn  
Hall Bath: same as Master shower  
Tub Surround: same as Master shower  
Tile Selection: acrylic unit white  
Grout: same as Master shower

Tub Choices: Style CORNER  
Pump: 0  
Color: White  
Style: acrylic  
Pump: 0  
Tub Surround: \*  
Tile Selection: same as Master shower

VAULTS:  
AS PER PLAN

CARPET  
Homeowner still has to choose

VINYL/FLOOR TILE  
18x18 durado FD03  
LAUNDRY, FOYER, KITCHEN, Dining Hall  
#156 Fawn  
hall and master bath 12x12 durado FD03

PAINT SELECTIONS:  
Interior Wall Color: homeowner to give painter color  
Interior Trim: same as wall

Window Sills:  
☒ Yes Wood  
☐ Flatout Marble  
☐ Hardplank Sidig Wood Sill

RANGE SELECTIONS:  
Range/Color: black  
Hood/Color: black

OPTIONAL APPLIANCES:  
DW Black

EXTERIOR FEATURE SELECTIONS:  
Acrocrete/Main House: 36233 38 Manchester  
Trim Package: COLUMNS  
Trim Color: White like models  
Exterior Door Colors: WHITE  
Siding: STO  
Soffit: White  
Shingles: match Oyster shell pinnacle shingles  
Style/Color: ARCH  
Window Color: WHITE  
Trim Type: Colonial w/Classique Doors Std.  
Colonial Grills: Front Windows Standard

LAUNDRY FRONT FRENCH DOOR

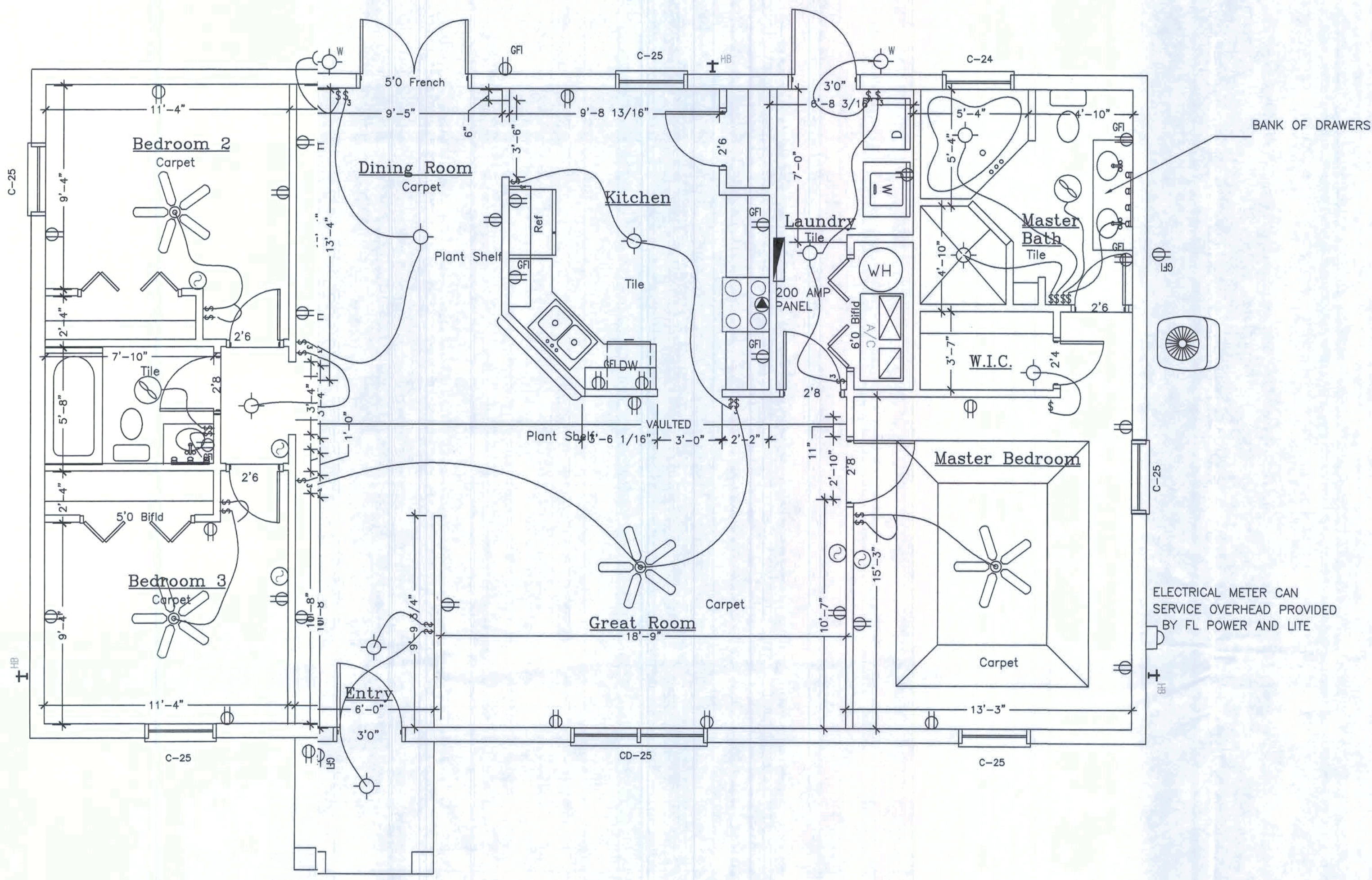
BATH WINDOWS:  
Master: ☒ Obscure ☐ Clear Glass  
Hall: ☐ Obscure ☐ Clear Glass

SUPER Energy Pac: Yes ☐ No ☒ Well Allowance Yes ☒ No ☐  
Septic Allowance Yes ☒ No ☐  
Extras: None  
Power Company: Clay ☒ Overhead ☐ Underground  
Fireplace: None Screenroom Color: None

We have reviewed this plan and all notes on it. All items we have discussed with House Craft and its representatives are indicated on this "Master Copy". We understand that any additional items that are not on this print can be done for a \$250.00 plan change fee plus the cost of the change.

Purchaser: \* Date: 1

REV.	DESCRIPTION	DATE



FLOOR PLAN  
SCALE: 1/4"=1'-0"

AS PER 2008 NEC CODES  
GPH

LIGHTING FIXTURE SCHEDULE	
FIXTURE	DESCRIPTION
	SURFACE MOUNTED INCANDESCENT FIXTURE
	PRE-WIRED CEILING FAN
	DOUBLE FLOOD LIGHT FIXTURE
	FAN LIGHT VENTED TO EXTERIOR
	SURFACE MOUNTED INCANDESCENT FIXTURE

TYPICAL SPECIAL CIRCUIT ELECTRIC SCHEDULE	
TWO GFI's IN KITCHEN ONE OR TWO GFI's IN BATHS LOOPED TOGETHER GFI IN GARAGE, FRONT ENTRY, AND REAR PORCH LOOPED TOGETHER ONE GFI FOR JETTED TUB (OPTIONAL) TWO AFI's IN BEDROOMS	

CODE COMPLIANCE - This building is designed in compliance with the requirements of the Florida Building Code, 2001, 2007 with 2009 amendments. GPH

DESIGN LOADS			
a. Uniformly Distributed Live Loads (Section 1604.1)			
Floor Live Load	na	psf	
b. Roof Live Loads (Section 1604.6)			
6:12 Pitch	16	psf	
c. Wind Loads (Section 1606.2)			
1.) Enclosure Classification		Enclosed	
2.) Basic Wind Speed (3 second gust)		110 mph	
3.) Wind Importance Factor, Iw		1.0	
4.) Exposure Category		B	
5.) Internal Pressure Coefficients:		+0.18, -0.18	
6.) Design Wind Pressures for Doors and Windows		Opening Area (sf)	Inward Pressure (psf) Outward Pressure (psf)
		0-10	21.8 -29.1
		11-20	20.8 -27.2
		21-50	19.5 -24.6
		51-100	18.5 -22.8

ELECTRICAL LEGEND	
	DUPLEX CONVENIENCE RECEPTACLE WITH GROUND (44" DENOTES HEIGHT A.F.F., IF OTHER THAN STD.)
	SPECIAL RECEPTACLE WITH GROUND, SEE SPECIFICATIONS
	SINGLE POLE SWITCH AT STANDARD HEIGHT
	THREE WAY SWITCH AT STANDARD HEIGHT
	TELEPHONE OUTLET
	CEILING MOUNTED EXHAUST FAN VENTED TO EXTERIOR
	CABLE TV OUTLET
	ELECTRICAL DISTRIBUTION PANEL
	SMOKE DETECTOR
	THERMOSTAT

Square Footage	
Living...	1,574
Garage...	000
Entry...	36
Porch...	000
Total...	1,610

HOUSE CRAFT HOMES L.L.C.  
12523 NW U.S. Hwy. 441 - Alachua, FL 32615  
Phone: (386) 462-5323/FAX: (386) 462-1509

Job name: BROWN

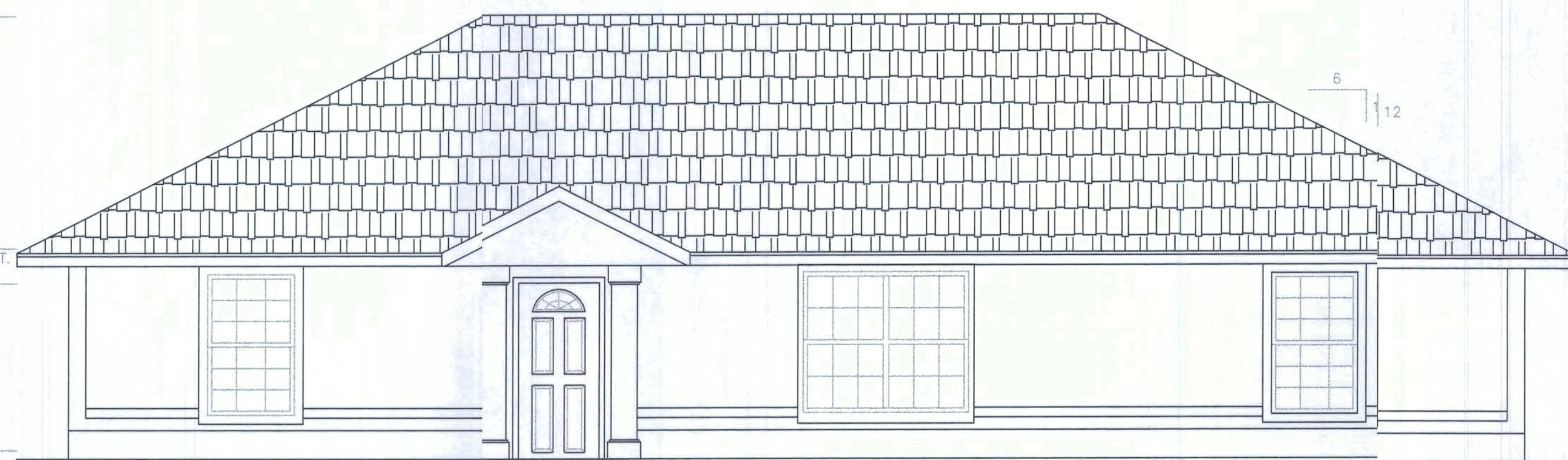
Model: <u>CUSTOM</u>	Type: <u>PLAN</u>
Location: <u>J.D.H.</u>	Drawn By: <u>JD.H.</u>
Checked By: <u>J.D.H.</u>	Revision Date: <u>Date</u>
Scale: <u>1/4"=1'</u>	Date: <u>3/15/11</u> Sheet: <u>3 of 4</u>



16'-0"  
TOTAL HEIGHT

8'-0"  
TRUSS BRNG. HT.  
6'-8"  
WIND. HEAD HT.

0'-0"  
A.F.F.



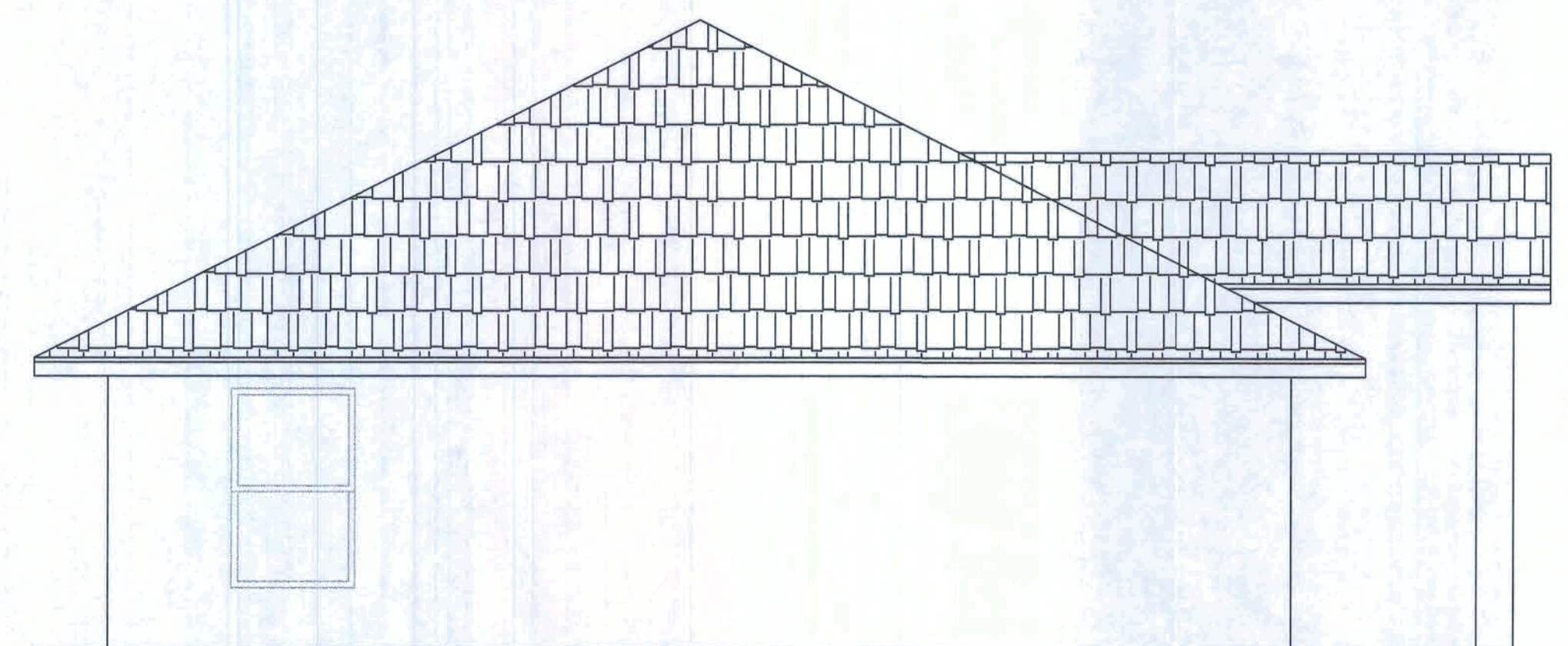
FRONT ELEVATION

SCALE: 1/4"=1'-0"



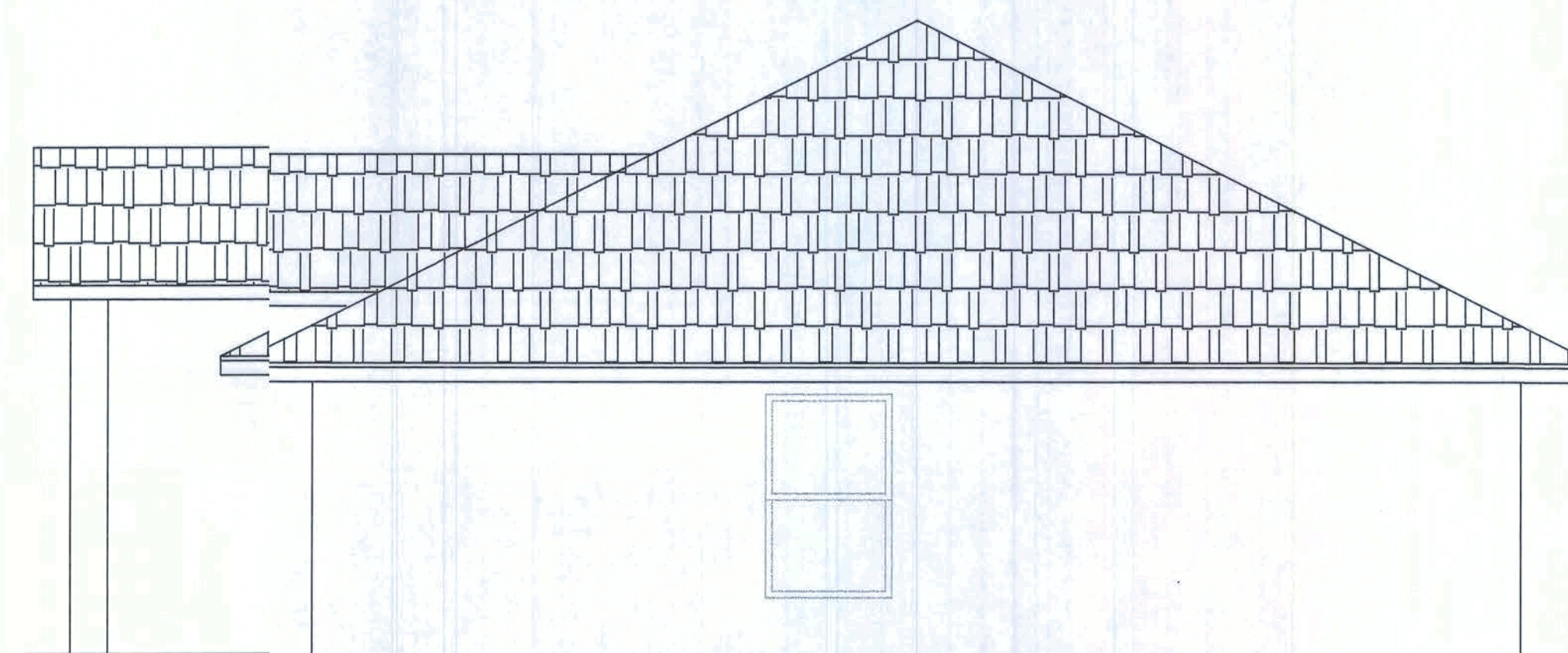
BACK ELEVATION

SCALE: 1/4"=1'-0"



LEFT ELEVATION

SCALE: 1/4"=1'-0"



RIGHT ELEVATION

SCALE: 1/4"=1'-0"

ROOF VENT SCHEDULE

1,574 SQ. FT./300 = 5.25 SQ. FT. VENT REQUIRED

176 L. FT. x2/35 = 10.06 SQ. FT. VENT PROVIDED

4 STANDARD ROOF VENTS x 0.72 = 3.6 SQ. FT. PROVIDED

5.25 REQUIRED = 15.31 PROVIDED

HOUSE CRAFT HOMES, L.L.C.  
12523 NW U.S. Hwy. 441 - Alachua, FL 32615  
Phone: (386) 462-5323/FAX: (386) 462-1509

Job name: BROWN  
Model: CUSTOM Type: ELEVATIONS  
Location: Drawn By: J.D.H.  
Checked By: J.D.H. Revision Date: Date  
Scale: 1/4"=1' Date: 3/15/11 Sheet: 4 of 4