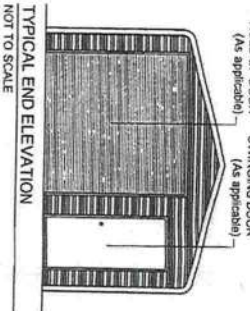
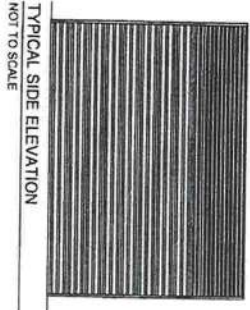
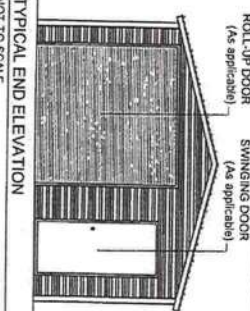
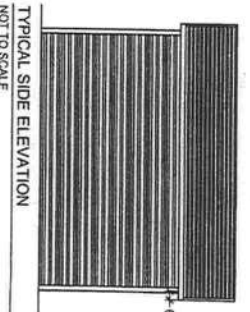


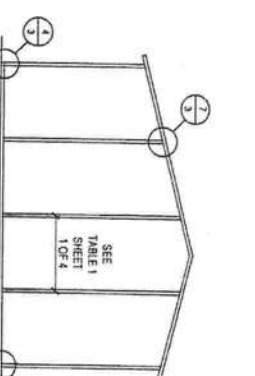
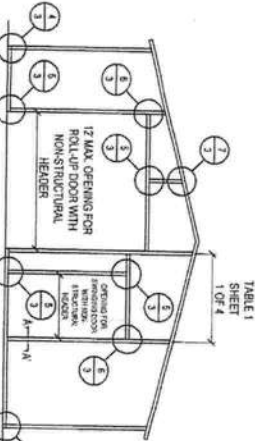
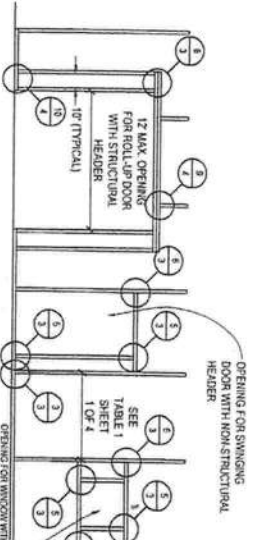
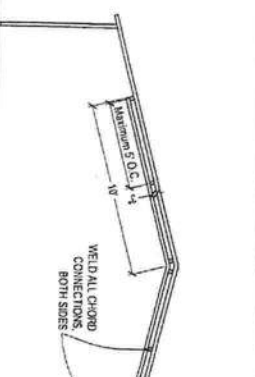
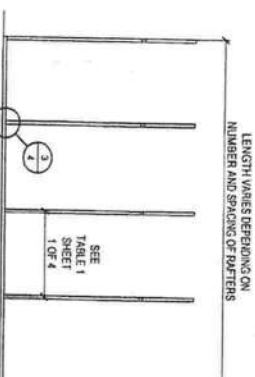
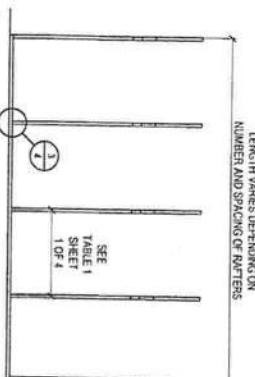
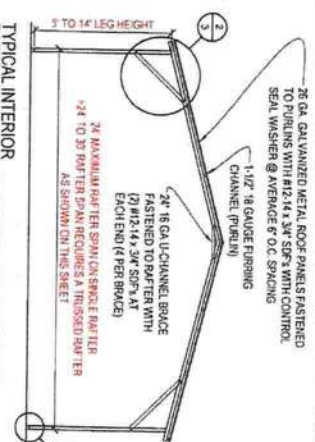
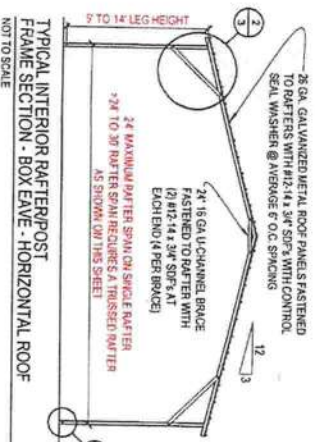
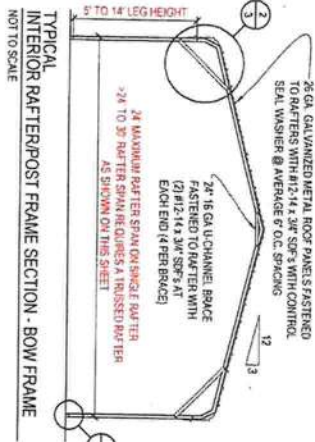
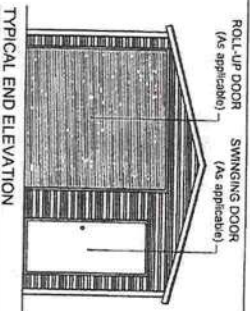
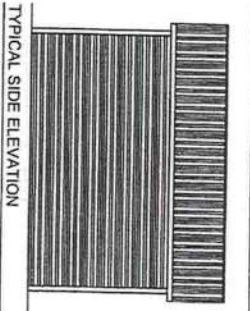
BOW FRAME RAFTER ENCLOSED BUILDING - HORIZONTAL ROOF



BOX EAVE FRAME RAFTER ENCLOSED BLDG - HORIZONTAL ROOF



BOX EAVE FRAME RAFTER ENCLOSED BLDG - VERTICAL ROOF

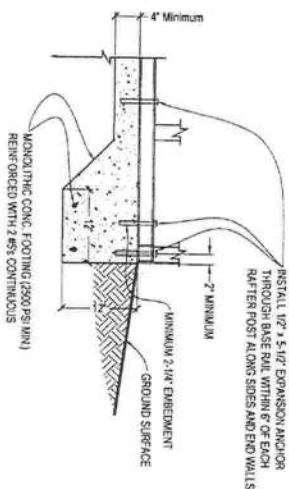


CARPORTS ANYWHERE, INC.
ENCLOSED BUILDING

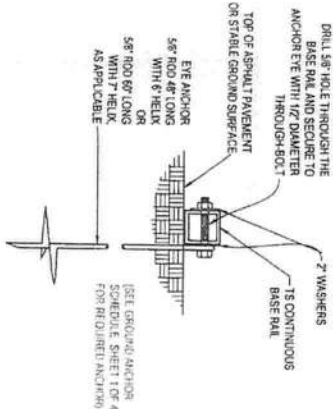
BECHTOL ENGINEERING AND TESTING, INC.
605 WEST NEW YORK AVENUE
DELAND, FLORIDA 33522
CERTIFICATE OF LICENSE NO. 98582

STATE OF ALABAMA
Professional Engineer
No. 98582
Exp. 12/31/2022

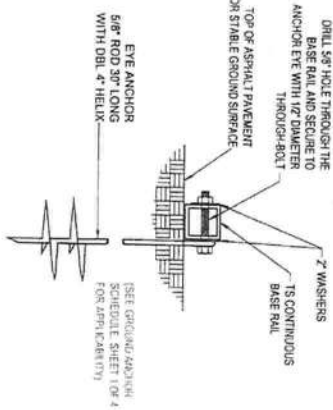
BECHTOL ENGINEERING AND TESTING, INC.
CONSTRUCTIVE MECHANICAL, SUPERVISOR, OF STRUCTURAL STEEL BRACKETS
DESIGNED BY: TJB
CHECKED BY: TJB
DATE: 01/02/21
SCALE: NTS
PROJECT NO.: G16002
SHEET 2 OF 4



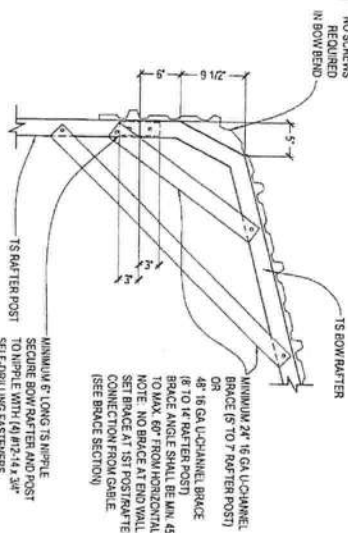
1A
Not To Scale
CONCRETE MONO. SLAB BASE RAIL ANCHORAGE



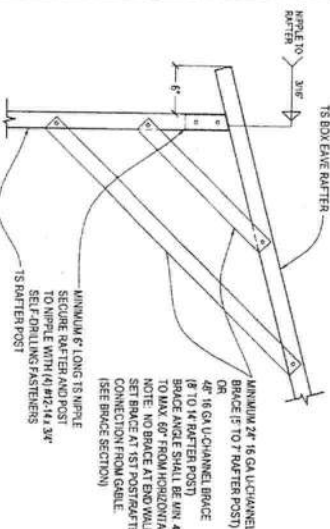
1B
Not To Scale
BASE RAIL DEEP ANCHORAGE



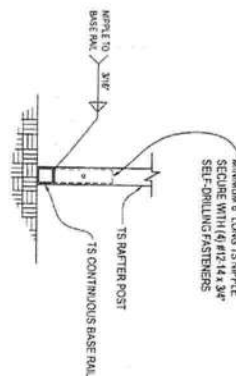
1C
Not To Scale
BASE RAIL ANCHORAGE



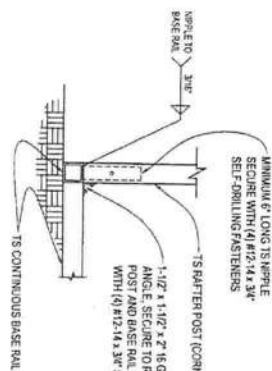
2A
Not To Scale
BOW RAFTER/CORNER POST CONNECTION DETAIL



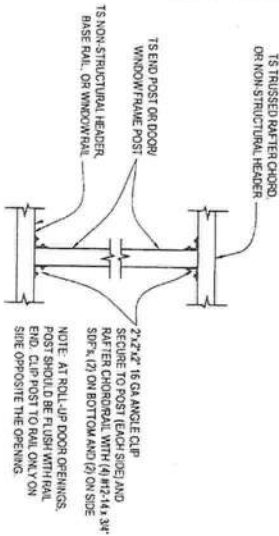
2B
Not To Scale
BOX EAVE RAFTER/CORNER POST CONNECTION DETAIL



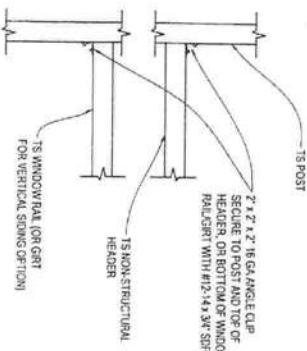
3
Not To Scale
RAFTER POST/ BASE RAIL CONNECTION DETAIL



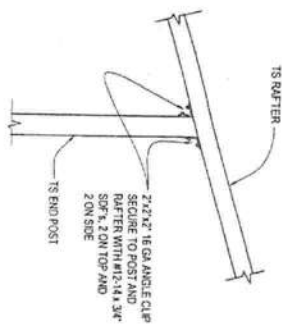
4
Not To Scale
END POST/BASE RAIL CONNECTION DETAIL



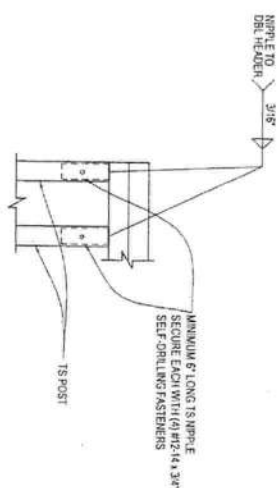
5
Not To Scale
POST TO NON-STRUCTURAL HEADER, BASE RAIL, OR WINDOW RAIL CONNECTION DETAIL



6
Not To Scale
NON-STRUCTURAL HEADER OR WINDOW RAIL TO POST CONNECTION DETAIL



7
Not To Scale
END POST/RAFTER CONNECTION DETAIL

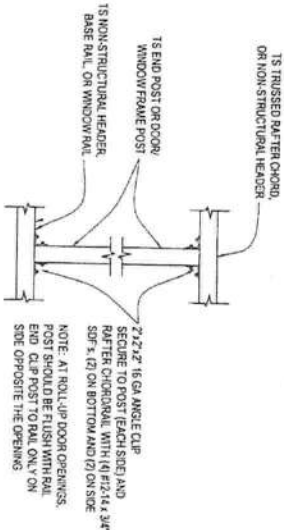


8
Not To Scale
DBL HEADER/POST CONNECTION DETAIL

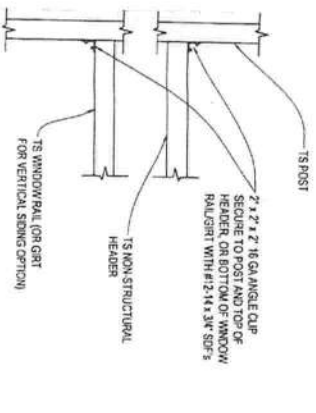
CARPORTS ANYWHERE, INC.

ENCLOSED BUILDING

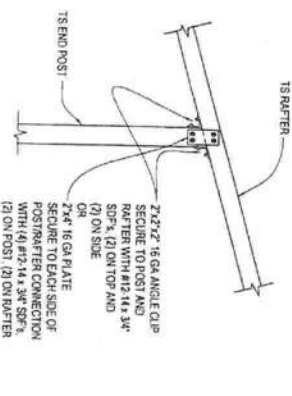
		DATE: 01/22/18	
BECHTOL ENGINEERING AND TESTING, INC.		SCALE: NTS	
CONSULTING ENGINEER, ARCHITECT, AND SPECIALTY TESTING DIVISION		PROJECT: TB	
Customer: Anywhere In Florida		APPROVED: TB	
		SHEET 3 OF 4	



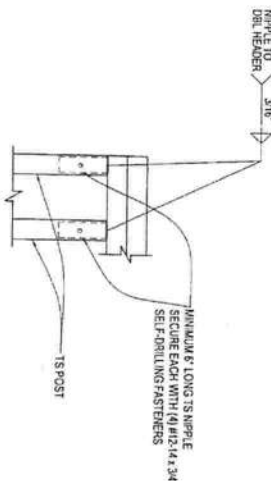
5 POST TO NON-STRUCTURAL HEADER, BASE
RAIL, OR WINDOW RAIL CONNECTION DETAIL
Not To Scale



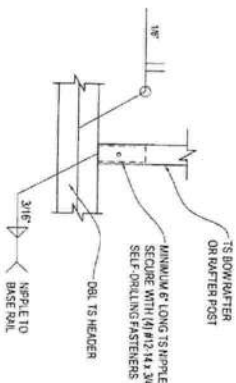
6 NON-STRUCTURAL HEADER OR WINDOW
RAIL TO POST CONNECTION DETAIL
Not To Scale



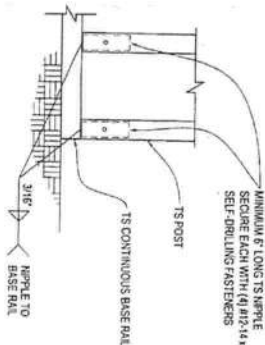
7 END POST/RAFTER CONNECTION DETAIL
Not To Scale



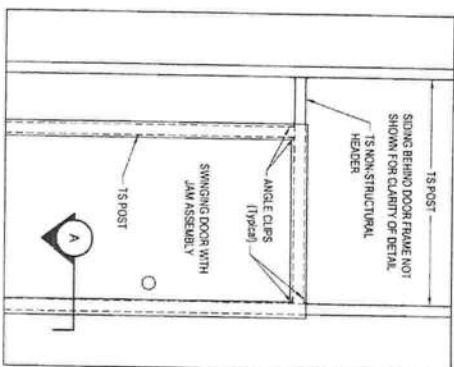
8 DBL. HEADER/POST CONNECTION DETAIL
Not To Scale



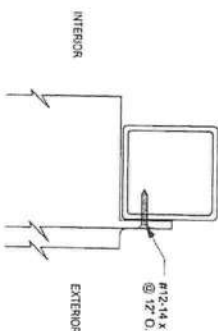
9 RAFTER POST/DBL. HEADER
CONNECTION DETAIL
Not To Scale



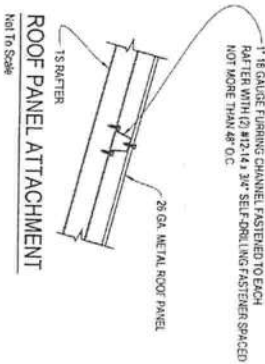
10 RAFTER POST/BASE
RAIL CONNECTION DETAIL
Not To Scale



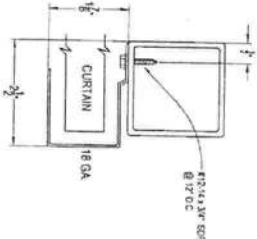
A SECTION
Not To Scale



A SECTION
Not To Scale



ROOF PANEL ATTACHMENT
Not To Scale



ROLL-UP DOOR GUIDE TO POST
CONNECTION DETAIL
Not To Scale

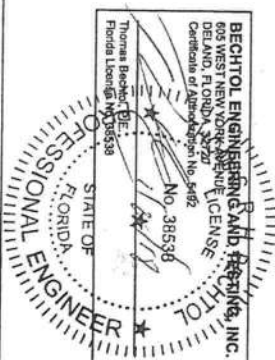
CURTAIN: 26 GA. galvanized steel with
labeled on epoxy primer & polyester top coat.

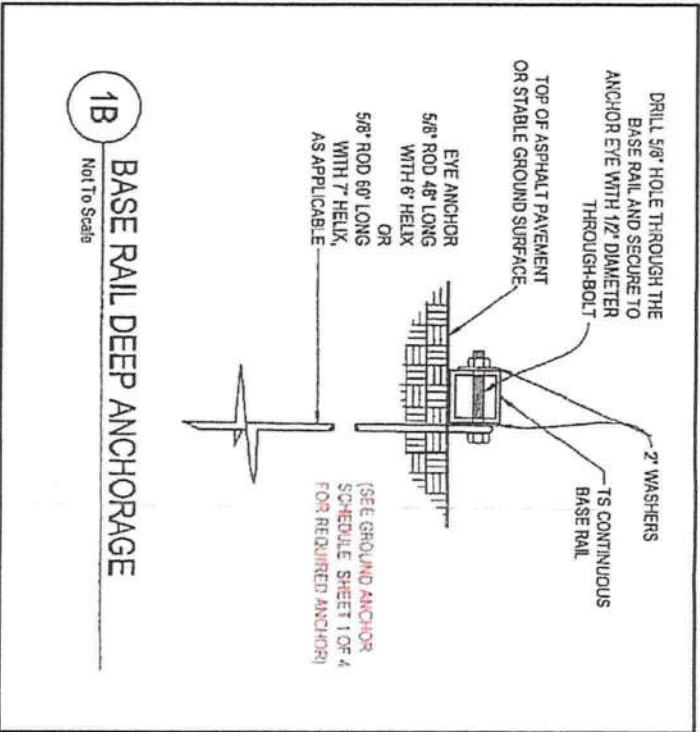
CARPORTS ANYWHERE, INC.

ENCLOSED BUILDING

DATE	01/02/18
BY	MKB
CHECKED	NJS
DESIGNED	TB
PROJECT NO.	Q18002
ISSUED	TB
SHEET 4 OF 4	

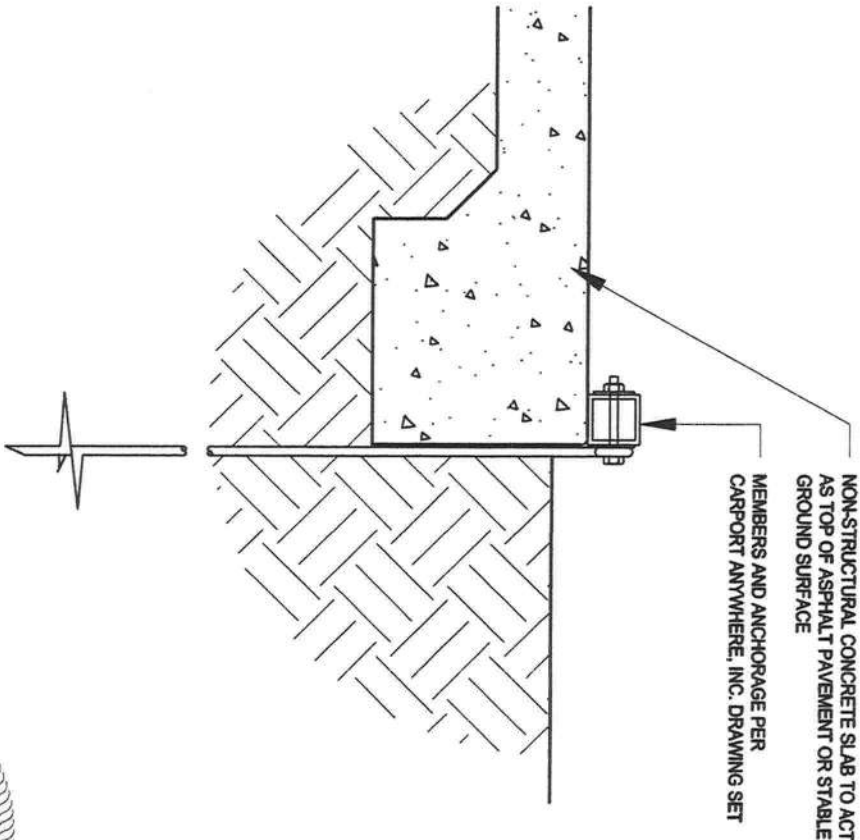
BECHTOL ENGINEERING AND TESTING, INC. 100 WEST NEW YORK AVE. SUITE 100
ROCKY HILL, CT 06151-3000
TEL: 860-261-1111 FAX: 860-261-1112
WWW.BECHTOL-ET.COM





CARPORT ANYWHERE, INC.
ORIGINAL DETAIL

SCALE: NONE



N. P. GEISLER, ARCHITECT
MODIFICATIONS

SCALE: NONE

Nicholas Geisler
25 SEPTEMBER 2020



CARPORT ANYWHERE, INC.
DETAIL MODIFICATIONS

P. O. BOX 776
STARKE, FLORIDA 32720

N3
NICHOLAS
PAUL
GEISLER
ARCHITECT
N.C.A.R.B. Certified

1758 NW Brown Road
Lake City, FL 32055
386/365-4355

COMM. Nr.:	2K2091	Digitally signed by: N. P. GEISLER DN: CN = N. P. GEISLER C = US O = AR0007006 OU = ARCHITECT Date: 2020.09.25 12:04:57 -0500'
DATE:	25SEP2020	
		E-SEAL