

SITE PLAN NOTES

1. PROJECT: TIDAL WAVE - LAKE CITY, FL
ADDRESS: 3039 W US HWY 90, LAKE CITY, FL 32055, COLUMBIA COUNTY, FL
- OWNER: TWAS PROPERTIES LLC
115 E MAIN ST
THOMASTON, GA 30286
- ARCHITECT: KERN ARCHITECTS
- ENGINEER: ATLAS TECHNICAL CONSULTANTS
8440 JEFFERSON HIGHWAY
BATON ROUGE, LA 70809
OFFICE: 225-369-6585
2. ZONING: C1 (LAKE CITY) & RSF-2 (COLUMBIA COUNTY)

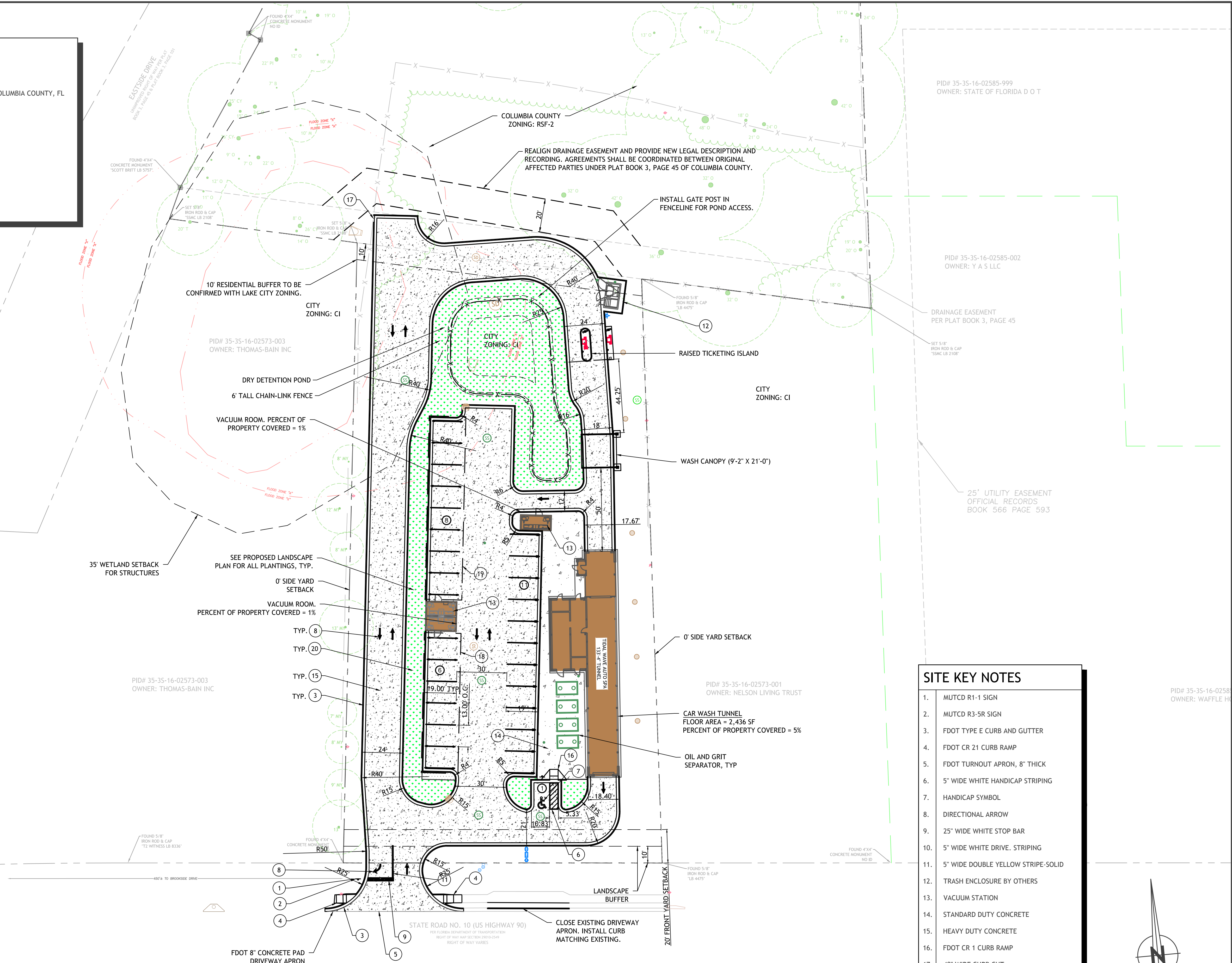
THE PURPOSE OF THIS PLAN IS FOR DEMOLITION ONLY. SEE SHEET C0.01 FOR DEMOLITION LEGEND & SEE SHEET C0.02 FOR DEMOLITION NOTES.

UTILITY DISCLAIMER

THE CONTRACTOR IS RESPONSIBLE FOR THE VERIFICATION OF ALL UTILITIES PRIOR TO BEGINNING CONSTRUCTION TO AVOID CONFLICTS WITH PROPOSED CONSTRUCTION. UTILITIES SHOWN ON THESE PLANS ARE BASED ON VARIOUS SOURCES AND MAY NOT BE RELIED UPON AS BEING ACCURATE OR COMPLETE. THE CONTRACTOR IS RESPONSIBLE FOR CALLING THE UTILITIES PROTECTION CENTER, INC. AT 811 AT LEAST 48 HOURS PRIOR TO EXCAVATING ACTIVITIES TO HAVE ALL UTILITIES MARKED WITHIN AND ADJACENT TO THE WORK AREA. IT IS THE RESPONSIBILITY OF THE CONTRACTOR TO RELOCATE ALL UTILITIES THAT ARE IN CONFLICT WITH PROPOSED IMPROVEMENTS SHOWN ON THESE PLANS.

LANDSCAPE DISCLAIMER

ALL LANDSCAPE AROUND DEMOLITION AREAS ARE TO BE CLEARED AND GRUBBED UNLESS NOTED OTHERWISE.



SITE KEY NOTES

- MUTCD R1-1 SIGN
- MUTCD R3-5R SIGN
- FDOT TYPE E CURB AND GUTTER
- FDOT CR 21 CURB RAMP
- FDOT TURNOUT APRON, 8" THICK
- 5" WIDE WHITE HANDICAP STRIPING
- HANDICAP SYMBOL
- DIRECTIONAL ARROW
- 25" WIDE WHITE STOP BAR
- 5" WIDE WHITE DRIVE STRIPING
- 5" WIDE DOUBLE YELLOW STRIPE-SOLID
- TRASH ENCLOSURE BY OTHERS
- VACUUM STATION
- STANDARD DUTY CONCRETE
- HEAVY DUTY CONCRETE
- FDOT CR 1 CURB RAMP
- 48" WIDE CURB CUT
- 84' X 21' VACUUM CANOPY
- 110' X 21' VACUUM CANOPY
- LANDSCAPING BY OTHERS

