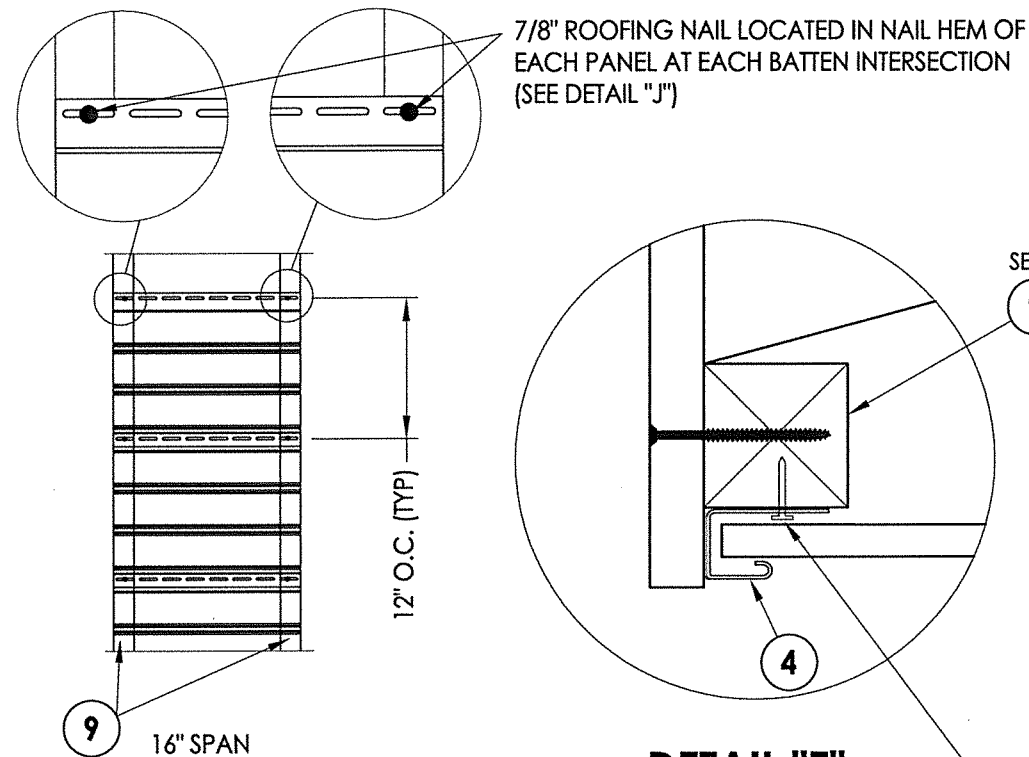


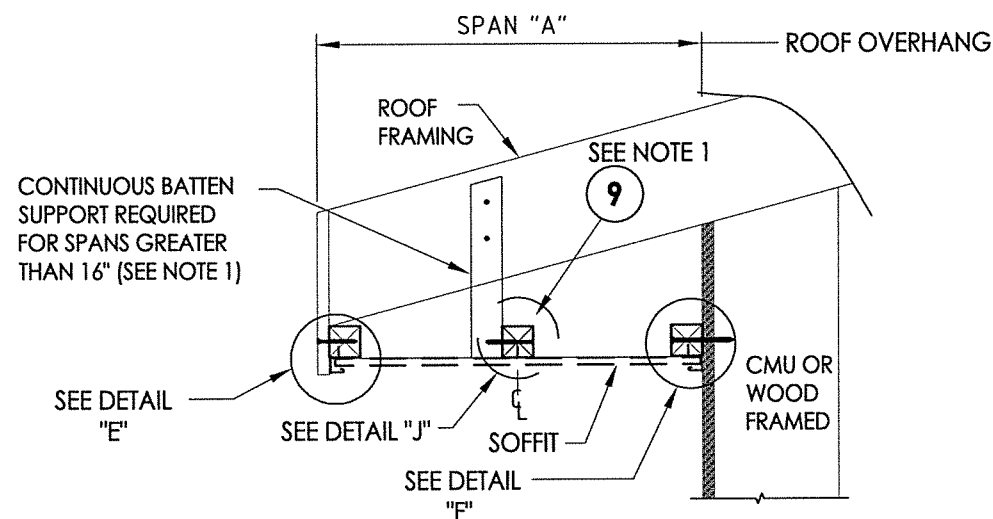
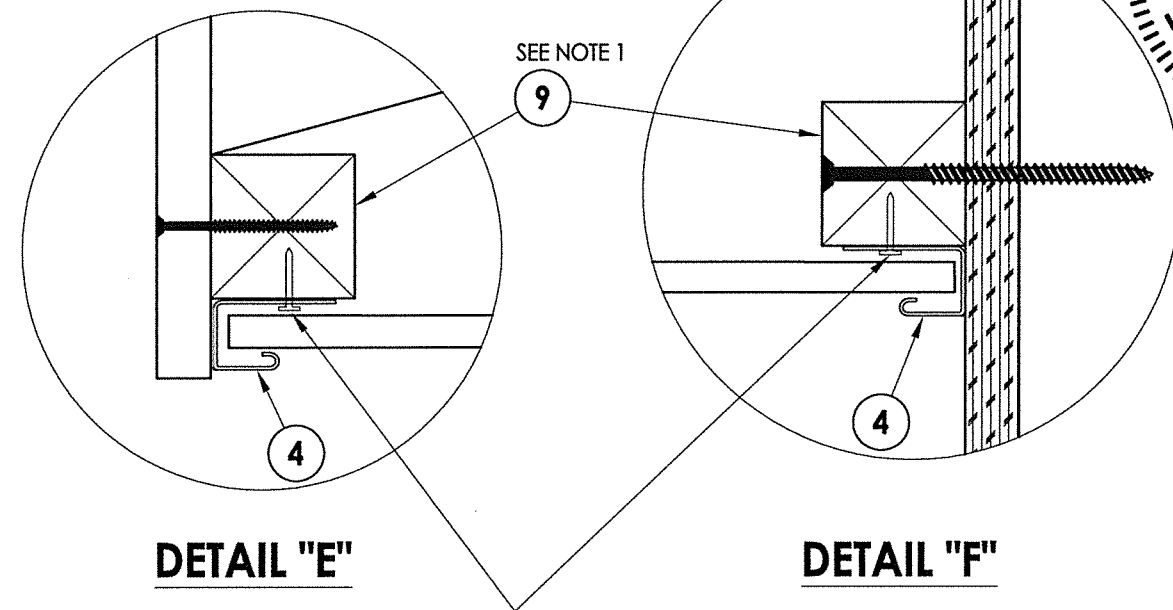


(Shown w/ truss/framing overhang)

\*Nailed at each end batten  
\*\*Free floating

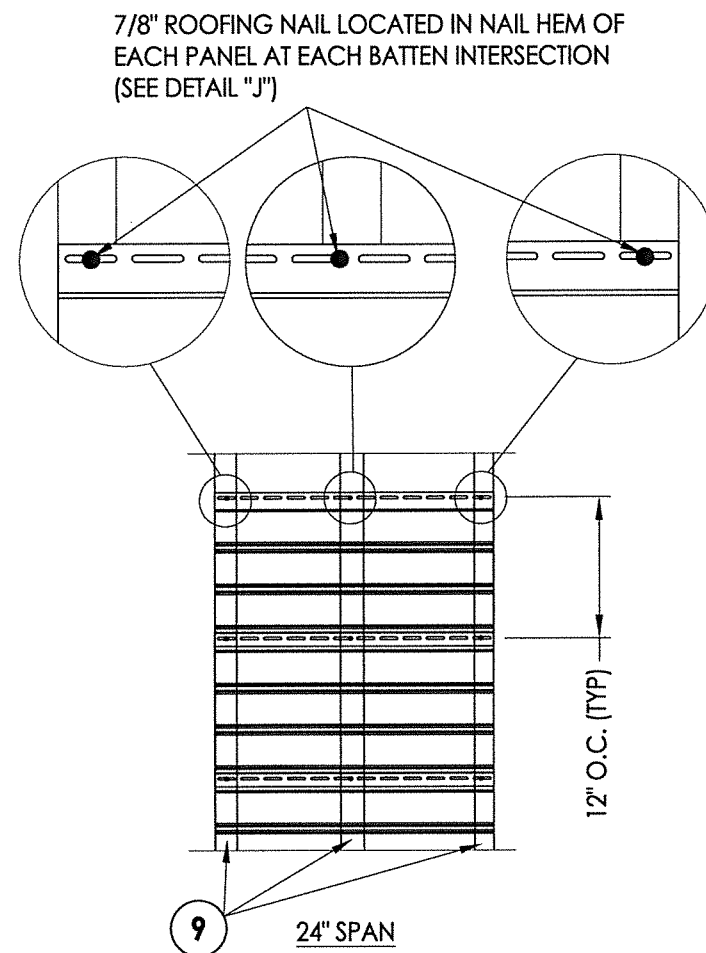


### DETAIL "F"

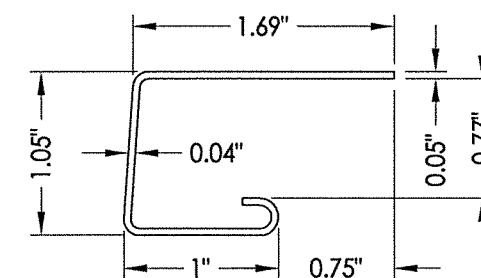
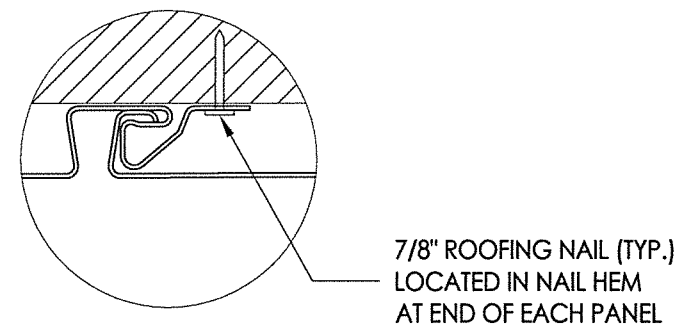


(Shown w/ truss/framing overhang)

\*Nailed at each end and center batten  
\*\*Nailed at center batten only

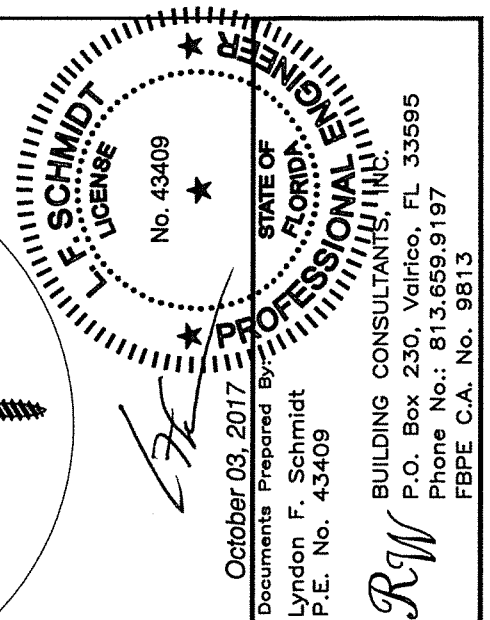


### DETAIL "J"



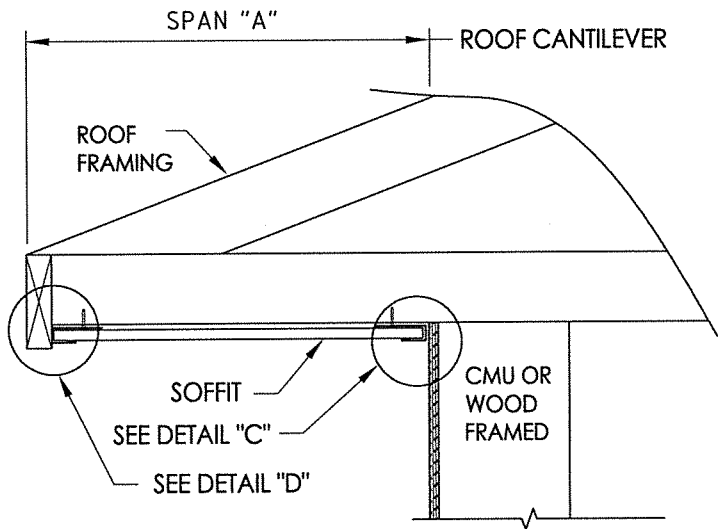
4 "J" CHANNEL  
Vinyl

1. WOOD FRAMING AND CONNECTIONS TO BE DESIGNED BY THE ARCHITECT OR ENGINEER OF RECORD.
2. ROOFING NAILS (0.125" Ø X 7/8" LONG w/ 3/8" Ø HEAD) SHALL BE CORROSION RESISTANT AND PENETRATE A MIN. OF 3/4" INTO SUPPORT FRAMING.

[illegible]

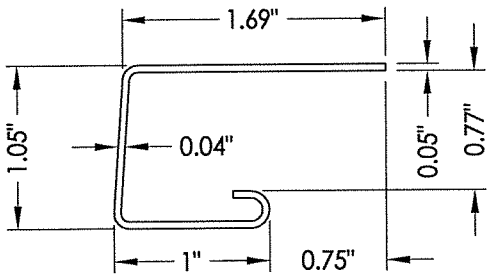
R:\Clients\Aside - Siding Division PERMANENTVA - Florida Product Approvals\FL-15272 (2017)\FL-15272.dwg, 3.5

- NOTE:
1. WOOD FRAMING AND CONNECTIONS TO BE DESIGNED BY THE ARCHITECT OR ENGINEER OF RECORD.
  2. ROOFING NAILS (0.125" Ø X 7/8" LONG w/ 3/8" Ø HEAD) SHALL BE CORROSION RESISTANT AND PENETRATE A MIN. OF 3/4" INTO SUPPORT FRAMING.

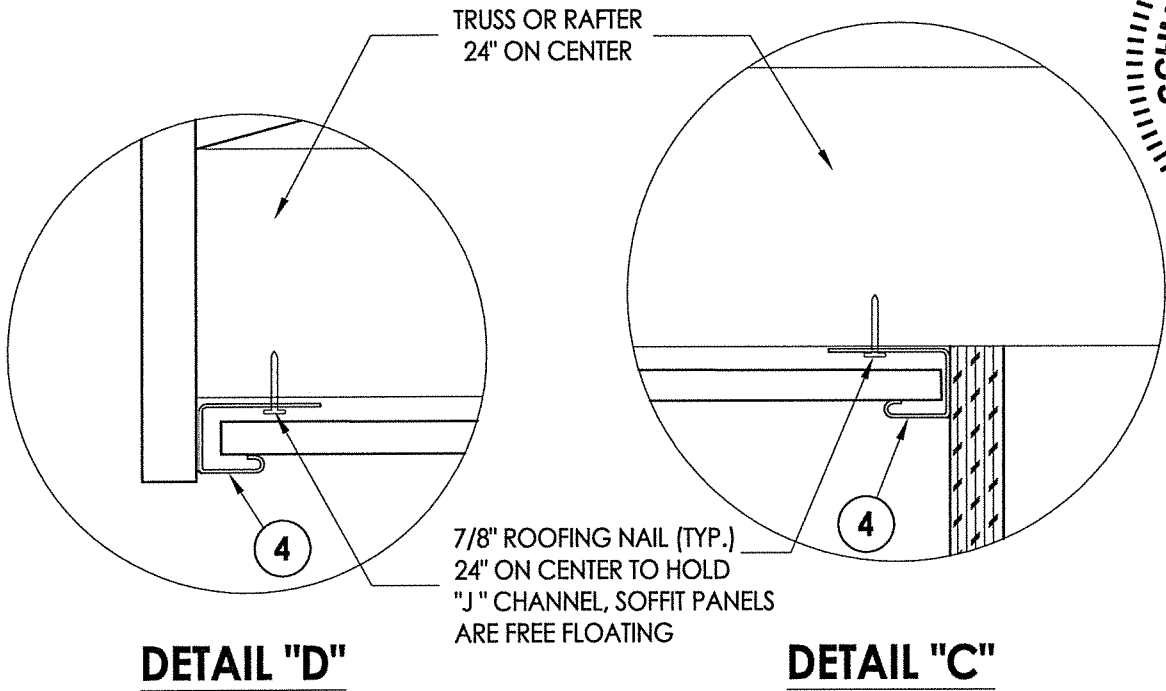


**SIDE VIEW - SINGLE SPAN w/ J-CHANNELS**  
(Shown w/ truss/framing cantilever)

SINGLE SPAN LENGTH "A"	DESIGN PRESSURE (PSF)	
	POSITIVE	NEGATIVE
8"	+40.0	-40.0
16"	+35.0	-35.0

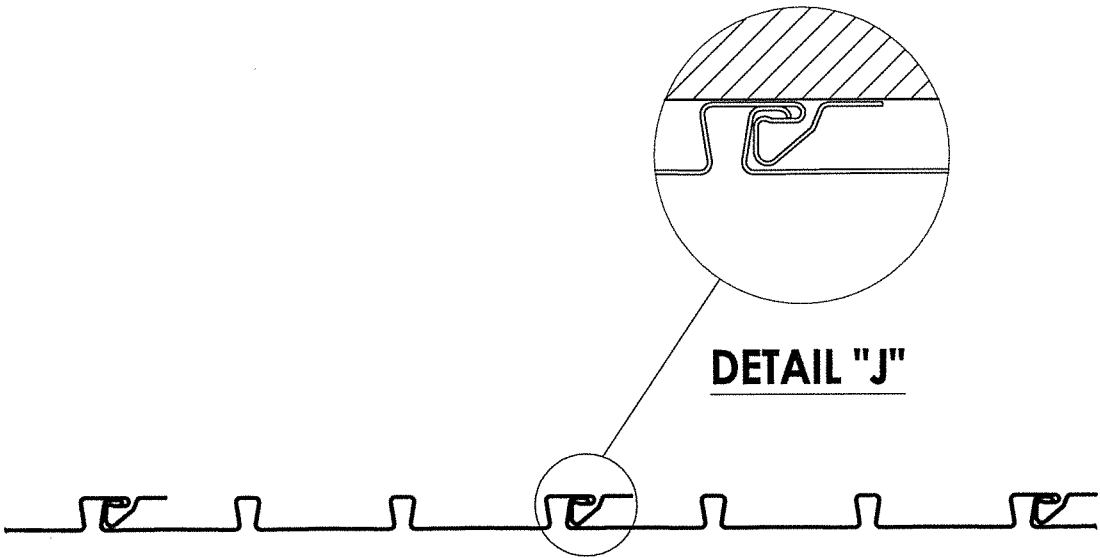


**4 "J" CHANNEL**  
Vinyl



**DETAIL "D"**

**DETAIL "C"**



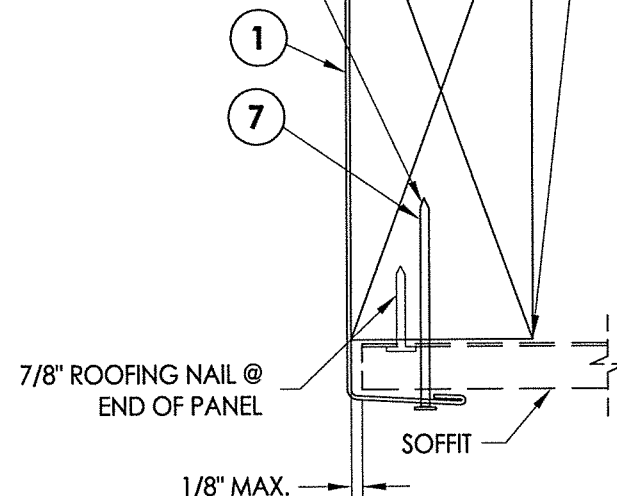
**SECTION THRU SOFFIT**

**FLORIDA PROFESSIONAL ENGINEER**  
No. 43409  
October 03, 2017  
Documents Prepared By:  
Lyndon F. Schmidt  
P.E. No. 43409  
R.W. BUILDING CONSULTANTS, INC.  
P.O. Box 230, Valrico, FL 33595  
Phone No.: 813.659.9197  
FBPE C.A. No. 9813

PRODUCT:		VINYL SOFFIT	
PART OR ASSEMBLY:		SOFFIT DETAILS & DESIGN PRESSURES	
NO.	DATE	REVISIONS	BY
2	10/03/17	UPDATE TO 6TH ED. (2017)	LFS
1	2/12/15	UPDATE TO 5TH ED. (2014)	FBC
1	DATE		BY
DATE: 02/29/12			
SCALE: N.T.S.			
DWG. BY: JK			
CHK. BY: LFS			
DRAWING NO.: FL-15272.5			
SHEET 3 OF 6			

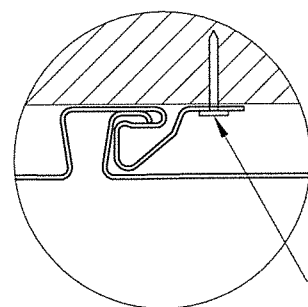


NOTE:  
FOR SQUARE CUT OVERHANG,  
TRIM BOTTOM OF FASCIA FLAT  
AGAINST PANEL



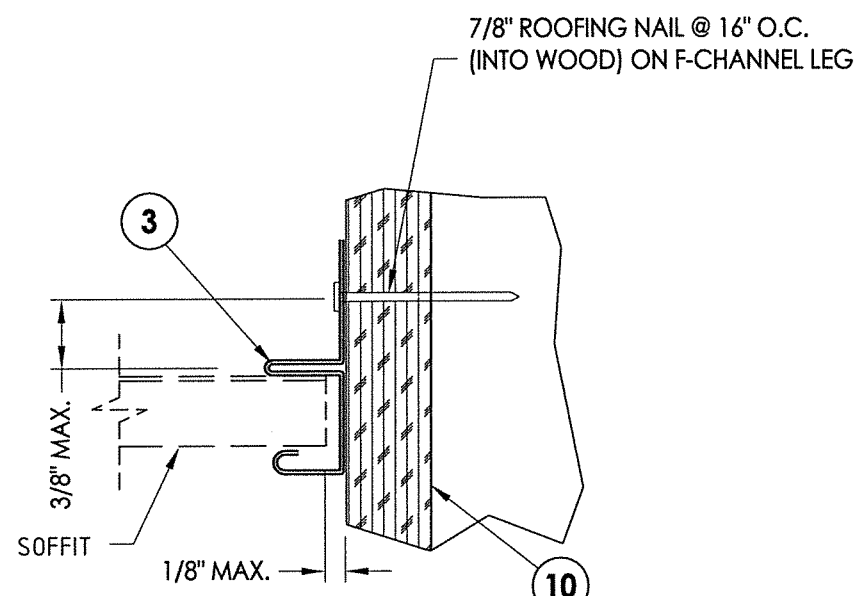
### DETAIL "A"

Fascia  
SPAN "A"



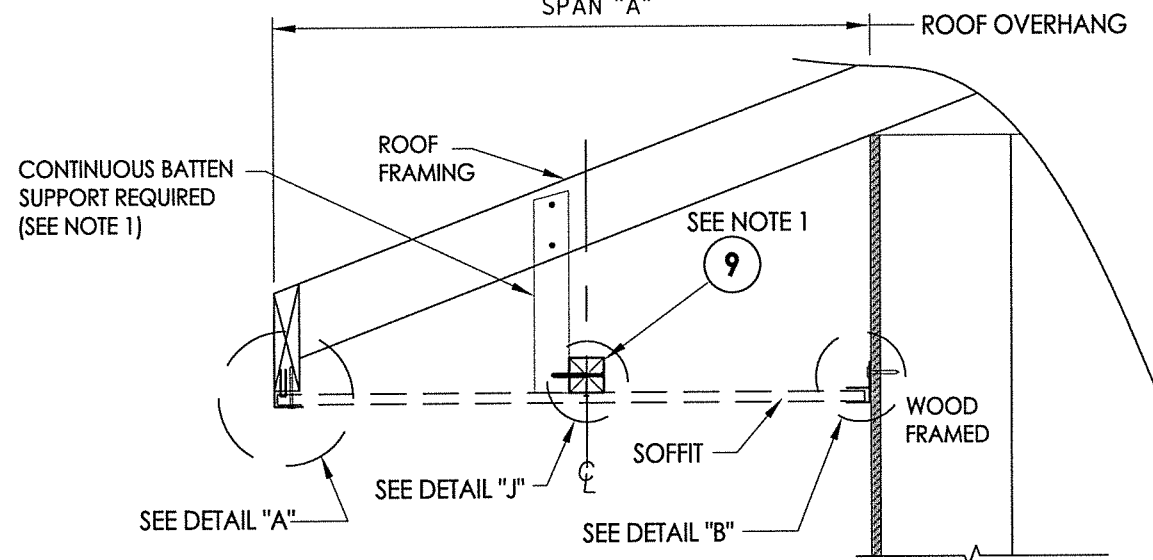
7/8" ROOFING NAIL (TYP.)  
LOCATED IN NAIL HEM  
AT END OF PANEL

## DETAIL "J"



### DETAIL "B"

F-Channel



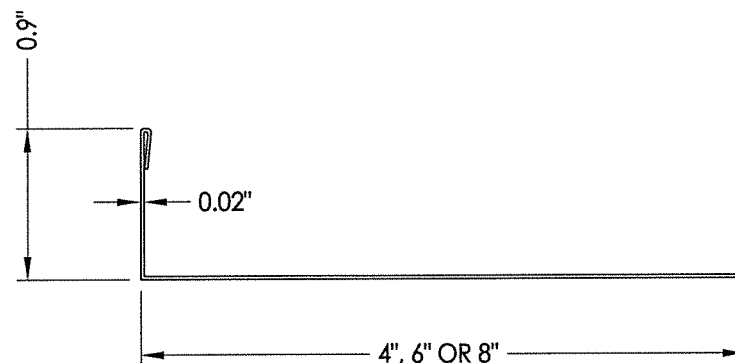
### SIDE VIEW - DOUBLE SPAN w/ BATTEN

(Shown w/ truss/framing overhang)

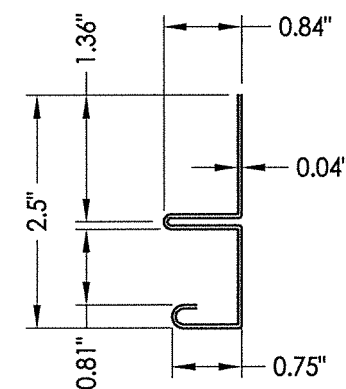
TWIN SPAN LENGTH w/ CONTINUOUS BATTEN "A"	DESIGN PRESSURE (PSF)	
	POSITIVE	NEGATIVE
16"	+135.0	-135.0
24"	+85.0	-85.0

NOTE:

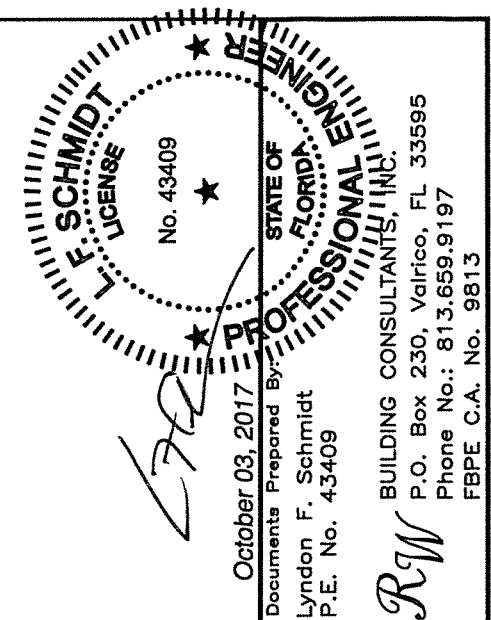
1. WOOD FRAMING AND CONNECTIONS TO BE DESIGNED BY THE ARCHITECT OR ENGINEER OF RECORD.
2. ROOFING NAILS (0.125" Ø X 7/8" LONG w/ 3/8" Ø HEAD) SHALL BE CORROSION RESISTANT AND PENETRATE A MIN. OF 3/4" INTO SUPPORT FRAMING.



1 **FASCIA**  
Aluminum



3 "F" CHANNEL  
Vinyl



October 03, 2017

October 03, 2017  
Documents Prepared By

Lyndon F. Schmidt

**ASSEMBLY:**  
SOFFIT DETAILS &  
DESIGN PRESSURES

2	10/03/17	UPDATE TO 6TH ED. (2017)	FBC	LFS
1	2/12/15	UPDATE TO 5TH ED. (2014)	FBC	LFS
NO.	DATE			BY
REVISIONS				

DATE: 02/29/12

SCALE: N.T.S.

DWG. BY: JK

CHK. BY: LFS

DRAWING NO.:

FL-15272.5

SHEET 4 OF 6

(Shown w/ truss/framing cantilever)

SPAN "A"

ROOF OVERHANG

ROOF FRAMING

ALUMINUM FASCIA TRIM

SOFFIT

WOOD FRAMED

SEE DETAIL "A"

SEE DETAIL "B"

(Shown w/ truss/framing overhang)

TRIM NAIL ATTACHED  
THROUGH FASCIA  
@ 36" O.C. MAX.

7/8" ROOFING NAIL @  
END OF PANEL

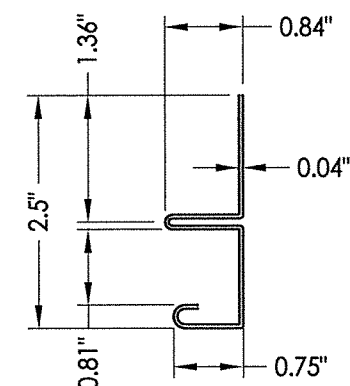
1/8" MAX.

## Fascia

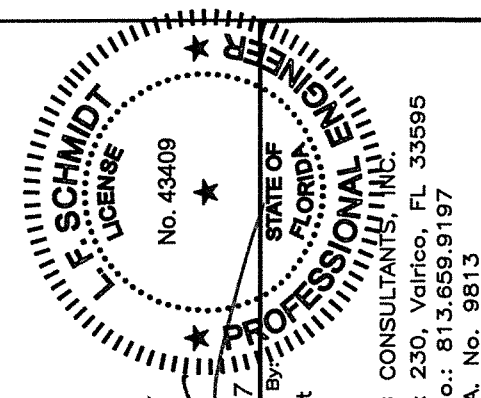
NOTE:  
FOR SQUARE CUT OVERHANG,  
TRIM BOTTOM OF FASCIA FLAT  
AGAINST PANEL

7/8" ROOFING NAIL @  
- 16" O.C. (INTO WOOD)  
ON F-CHANNEL LEG

F-Channel



**3 "F" CHANNEL**  
Vinyl



October 03, 2017

October 03, 2017  
Documents Prepared By:

Lyndon F. Schm  
P.E. No. 43409

**BUILDING CONSULTANTS, INC.**  
P.O. Box 230, Valrico, FL 33595

Phone No.: 813.659.1313  
FBPE C.A. No. 9813

**PRODUCT:**

VINYL SOFFIT

PART OR ASSEMBLY:

## SOFFIT DETAILS & DESIGN PRESSURES

2	10/03/17	UPDATE TO 6TH ED.	(2017)	FBC LFS
1	2/12/15	UPDATE TO 5TH ED.	(2014)	FBC LFS
NO.	DATE	REVISIONS		

DATE: 02/29/12

SCALE: N.T.S.

DWG. BY: JK

CHK. BY: LFS

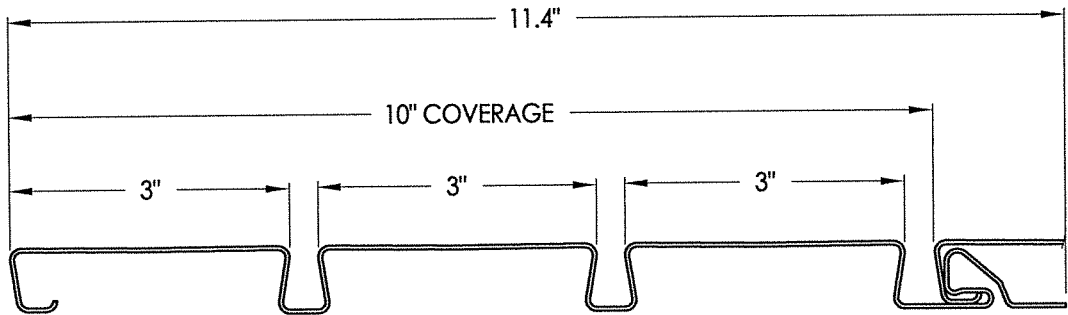
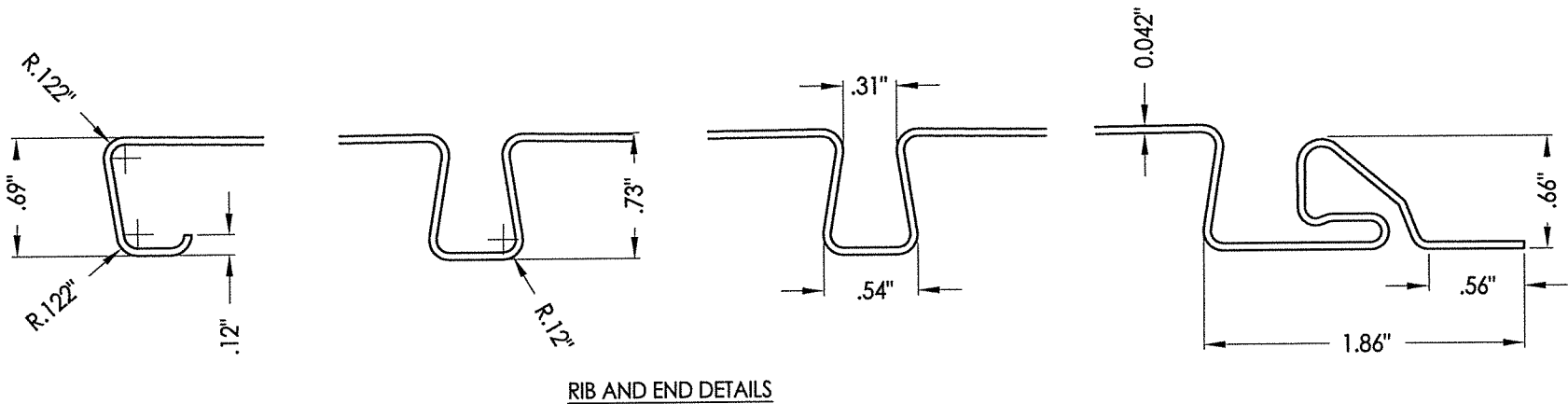
DRAWING NO.:

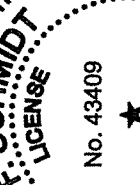
FL-15272.5

SHEET 5 OF 6

"CHARTER OAK" SOFFIT	AIR FLOW	
	FREE FLOW AREA (in <sup>2</sup> /ft <sup>2</sup> )	% FREE FLOW AREA
AERATED	3.84	2.7%

ITEM	DESCRIPTION	MATERIAL
1	FASCIA	ALUMINUM
3	"F" CHANNEL	VINYL
4	"J" CHANNEL	VINYL
6	CHARTER OAK PANEL	VINYL
7	#15 x 1-3/4" TRIM NAIL	S.S.
9	2" X 2" BATTEN STRIP SG=.42 OR BETTER	WOOD
10	APA B-C- GROUP 1 EXT. 15/32" PLYWOOD OR BETTER	WOOD





October 03, 2017

Documents Prepared By:

Lyndon F. Schmidt  
 P.E. No. 43409

BUILDING CONSULTANTS, INC.  
 P.O. Box 230, Valrico, FL 33595  
 Phone No.: 813.659.9197  
 FBPE C.A. No. 9813

*RW*

[illegible]