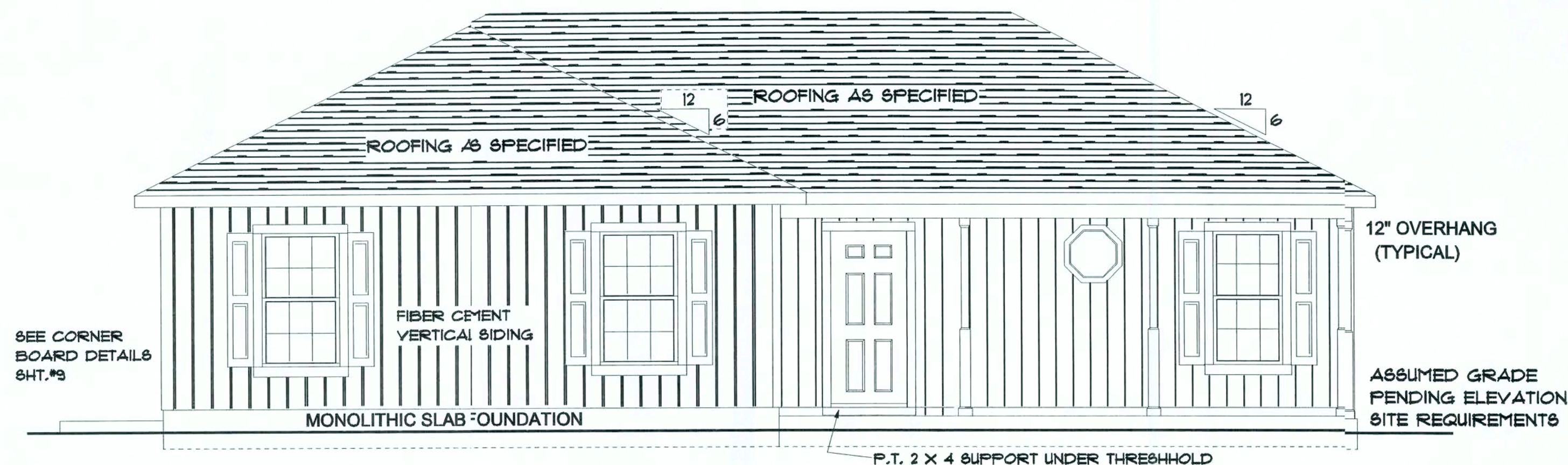


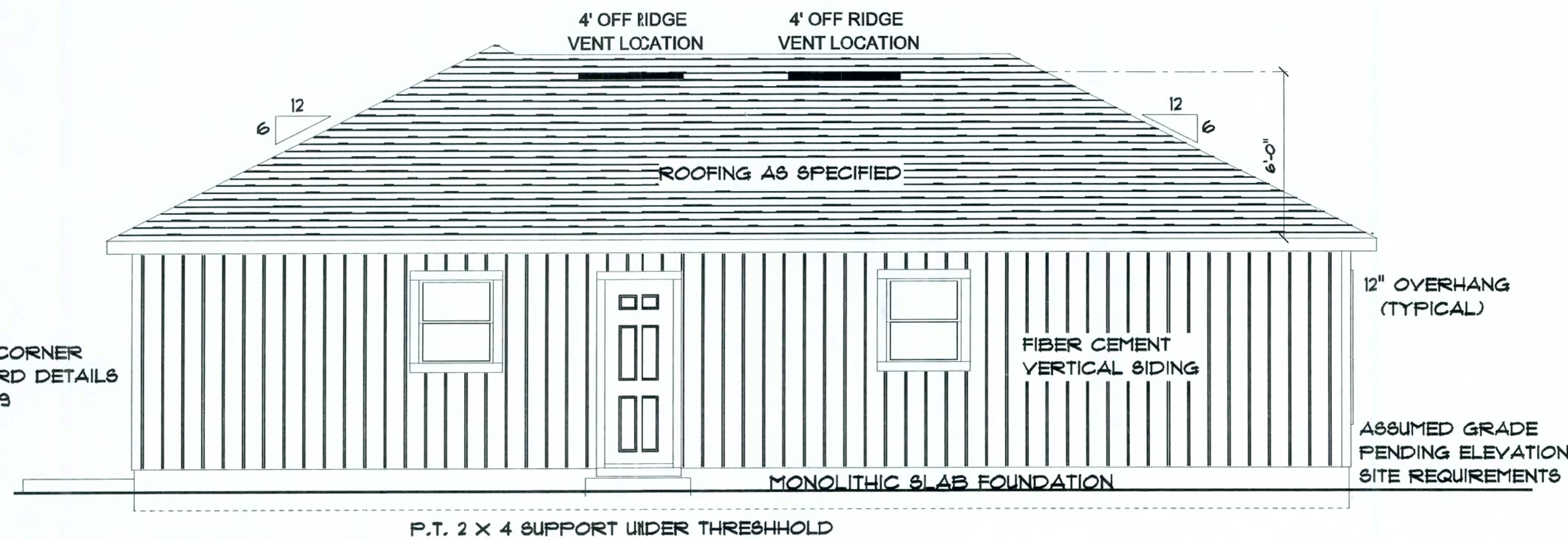
**NOTE!:**  
REFER TO ENGINEERING FOR  
SPECIFICATIONS AND CALCULATIONS.



FRONT ELEVATION

OFF RIDGE VENTS ARE REQUIRED  
DO NOT PLACE ON FRONT OF HOUSE

ALLOW FOR MIN. 24" BETWEEN OFF RIDGE VENTS



LEFT ELEVATION

**Pennyworth Homes**

Got Land? Let's Build!  
PennyworthHomes.com FL-CRC008477

EXHIBIT "A"

PLAN: GRANBURY

CUSTOMER NAME:  
MR. & MRS. MCGAUGHEY  
HEATED LIVING AREA

GROUND FLOOR: 1496  
SECOND FLOOR: N/A  
OTHER: N/A  
TOTAL HEATED: 1496

NON-HEATED  
LIVING AREA

PORCH: 132  
GARAGE: N/A  
OTHER: N/A  
TOTAL U/R 1628

IMPORTANT-PLEASE READ  
BELOW CAREFULLY

OUR SALES BROCHURES AND OTHER ADVERTISING LITERATURE ARE INTENDED TO GENERALLY REFLECT AND DEPICT THE STYLES AND QUALITY OF HOMES WE BUILD THROUGHOUT A PORTION OF THE UNITED STATES. OUR SALES MODELS ARE DESIGNED AND BUILT TO GENERALLY CONFORM WITH A VARIETY OF LOCAL CUSTOMS, PRACTICES, AND BUILDING CODES PREVALENT OR IN EFFECT IN THE IMMEDIATE AREA SURROUNDING THE LOCATION OF THOSE MODELS. THIS SET OF PLANS IS AN ACTUAL PART OF OUR CONTRACT WITH YOU AND, AS SUCH, IS INTENDED TO TAKE PRIORITY OVER ANYTHING IN CONFLICT WITH IT CONTAINED IN OUR ADVERTISING LITERATURE. OUR SALES MODELS AND EVEN OUR ORAL SALES PRESENTATION. NO CHANGE, MODIFICATION, OR REVISION OF THESE PRINTED PLANS SHALL BE BINDING ON THE PARTIES UNLESS SET FORTH ON THESE PLANS OR OTHERWISE REDUCED TO WRITING AND EXECUTED BY SAID PARTIES. PLEASE REVIEW THESE PLANS ALONG WITH "EXHIBIT B" OF YOUR CONTRACT CAREFULLY AND MAKE CERTAIN BEFORE YOU SIGN THEM THAT THEY ACCURATELY REPRESENT THE HOME YOU ARE PURCHASING. ADDITIONALLY, PENNYWORTH HOMES INC. HEREBY RESERVES THE RIGHT TO SUBSTITUTE MATERIALS OF EQUIVALENT QUALITY AND/OR TECHNIQUES OF ASSEMBLY AND/OR CONSTRUCTION METHODS FROM THAT CONTAINED IN THESE PLANS OR SPECIFIED IN EXHIBIT "B" WHERE NECESSARY TO ACCOMMODATE DIFFERENCES IN LOCAL CODES, GEOGRAPHIC CUSTOMS, OPTION SELECTION AND AVAILABILITY OF MATERIALS. ALL MATERIALS (LUMBER, OR OTHER BUILDING SUPPLIES) DELIVERED TO JOBSITE WHICH ARE IN EXCESS OF THOSE REQUIRED TO CONSTRUCT THE HOUSE AS AGREED REMAIN THE PROPERTY OF PENNYWORTH HOMES INC.

**NOTE:**  
PENNYWORTH HOMES INC. RESERVES THE RIGHT TO ONLY MAKE CHANGES TO PLANS, REQUESTED BY BUYERS, THAT PENNYWORTH HOMES INC. DEEMS TO BE AESTHETICALLY, ARCHITECTURALLY, AND STRUCTURALLY SOUND.

THIS PLAN REFLECTS THE DESIGN  
AS PER BUYERS' FINAL APPROVED  
SIGNED PLANS DATED 5/30/2006  
CHANGES MADE TO REPLICATE  
ENGINEERS NOTES AND  
CALCULATIONS.

CONSTRUCTION PLANS

SCALE: 1/4" = 1'-0"

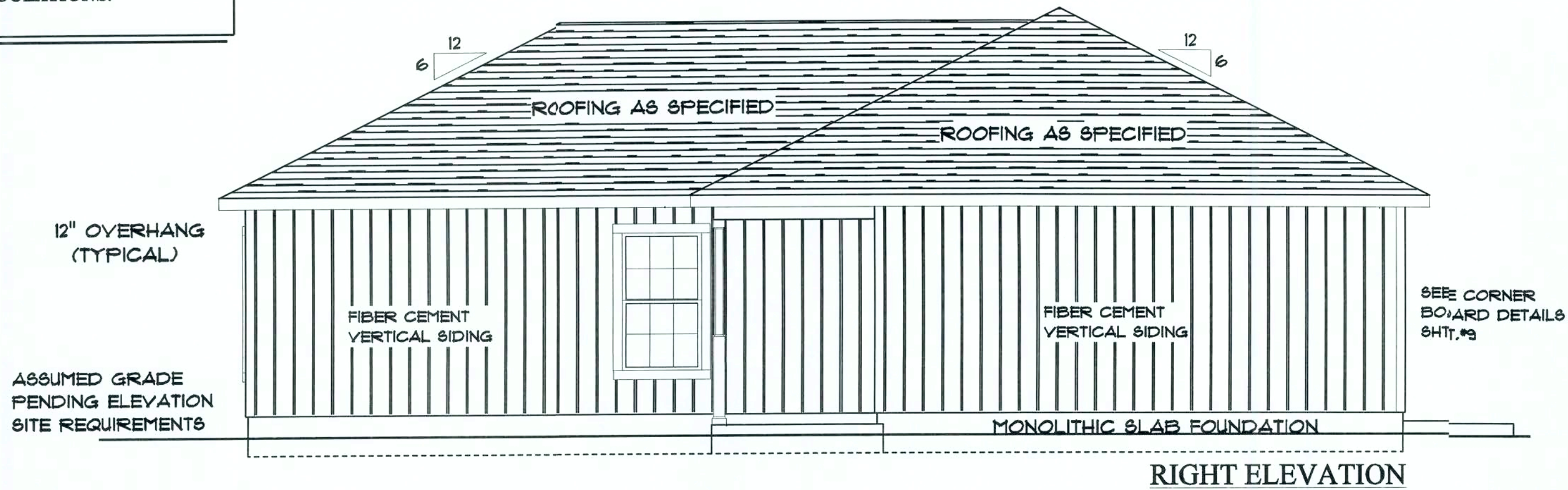
DRAWN BY: BAA PLAN DATE: July 27, 2006 PAGE 1

JOB# 06-04-0050 OF 9

REV.#	REV. DATE	DRAWN BY	DISCRIPTION OF REVISION

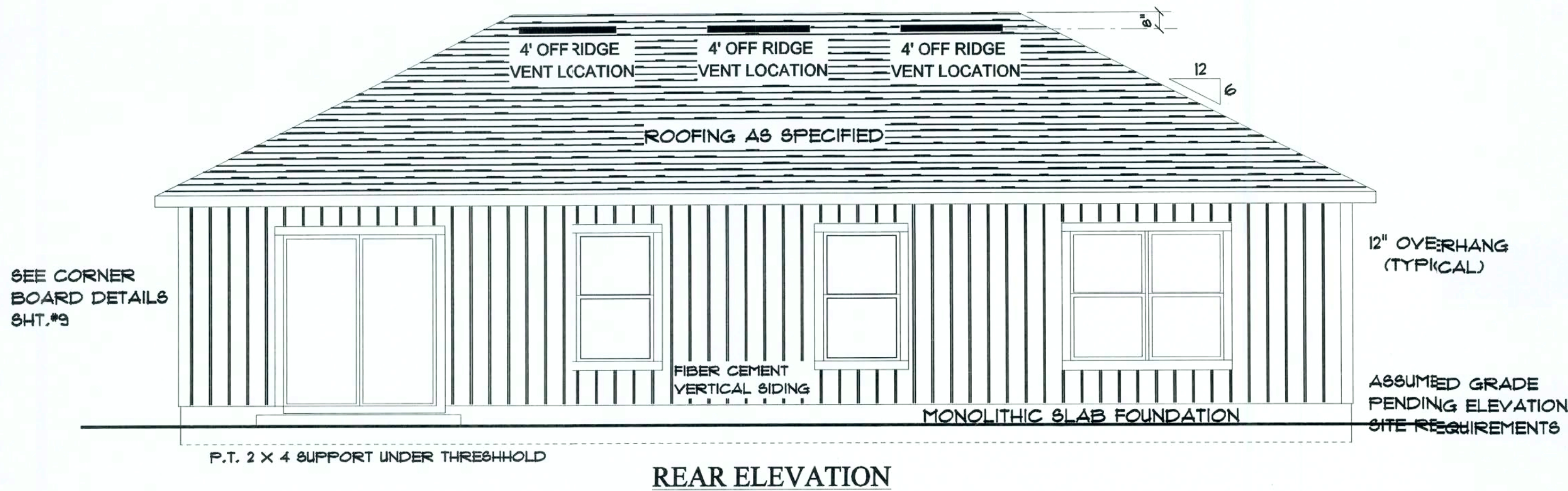


**NOTE!:**  
REFER TO ENGINEERING FOR  
SPECIFICATIONS AND CALCULATIONS.



OFF RIDGE VENTS ARE REQUIRED  
DO NOT PLACE ON FRONT OF HOUSE

ALLOW FOR MIN. 24" BETWEEN OFF RIDGE VENTS



**Pennyworth Homes**

*Got Land? Let's Build!*  
PennyworthHomes.com FL-CRC088477

EXHIBIT "A"

PLAN: **GRANBURY**

CUSTOMER NAME:  
**MR. & MRS. MCGAUGHEY**  
**HEATED LIVING AREA**

GROUND FLOOR: 1496  
SECOND FLOOR: N/A  
OTHER: N/A  
TOTAL HEATED: 1496

NON-HEATED  
LIVING AREA

PORCH: 132  
GARAGE: N/A  
OTHER: N/A  
TOTAL U/R 1628

IMPORTANT-PLEASE READ  
BELOW CAREFULLY

OUR SALES BROCHURES AND OTHER ADVERTISING LITERATURE ARE INTENDED TO GENERALLY REFLECT AND DEPICT THE STYLES AND QUALITY OF HOMES WE BUILD THROUGHOUT A PORTION OF THE UNITED STATES. OUR SALES MODELS ARE DESIGNED AND BUILT TO GENERALLY CONFORM WITH A VARIETY OF LOCAL CUSTOMS, PRACTICES, AND BUILDING CODES PREVALENT OR IN EFFECT IN THE IMMEDIATE AREA SURROUNDING THE LOCATION OF THOSE MODELS. THIS SET OF PLANS IS AN ACTUAL PART OF OUR CONTRACT WITH YOU AND, AS SUCH, IS INTENDED TO TAKE PRIORITY OVER ANYTHING IN CONFLICT WITH IT CONTAINED IN OUR ADVERTISING LITERATURE, OUR SALES MODELS AND EVEN OUR ORAL SALES PRESENTATION. NO CHANGE, MODIFICATION, OR REVISION OF THESE PRINTED PLANS SHALL BE BINDING ON THE PARTIES UNLESS SET FORTH ON THESE PLANS OR OTHERWISE REDUCED TO WRITING AND EXECUTED BY SAID PARTIES. PLEASE REVIEW THESE PLANS ALONG WITH "EXHIBIT B" OF YOUR CONTRACT CAREFULLY AND MAKE CERTAIN BEFORE YOU SIGN THEM THAT THEY ACCURATELY REPRESENT THE HOME YOU ARE PURCHASING. ADDITIONALLY, PENNYWORTH HOMES INC. HEREBY RESERVES THE RIGHT TO SUBSTITUTE MATERIALS OF EQUIVALENT QUALITY AND/OR TECHNIQUES OF ASSEMBLY AND/OR CONSTRUCTION METHODS FROM THAT CONTAINED IN THESE PLANS OR SPECIFIED IN EXHIBIT "B" WHERE NECESSARY TO ACCOMMODATE DIFFERENCES IN LOCAL CODES, GEOGRAPHIC CUSTOMS, OPTION SELECTION AND AVAILABILITY OF MATERIALS. ALL MATERIALS (LUMBER, OR OTHER BUILDING SUPPLIES) DELIVERED TO JOBSITE WHICH ARE IN EXCESS OF THOSE REQUIRED TO CONSTRUCT THE HOUSE AS AGREED REMAIN THE PROPERTY OF PENNYWORTH HOMES INC.

**NOTE:**  
PENNYWORTH HOMES INC. RESERVES THE RIGHT TO ONLY MAKE CHANGES TO PLANS, REQUESTED BY BUYERS, THAT PENNYWORTH HOMES INC. DEEMS TO BE AESTHETICALLY, ARCHITECTURALLY, AND STRUCTURALLY SOUND.

THIS PLAN REFLECTS THE DESIGN  
AS PER BUYERS' FINAL APPROVED  
SIGNED PLANS DATED 5/30/2006  
CHANGES MADE TO REPLICATE  
ENGINEERS NOTES AND  
CALCULATIONS.

CONSTRUCTION PLANS

SCALE: 1/4" = 1'-0"

DRAWN BY: BAA PLAN DATE: July 27, 2006 PAGE 2

JOB# 06-04-0050 OF 9

REV.#	REV. DATE:	DRAWN BY:	DISCRIPTION OF REVISION



NOTE!  
REFER TO ENGINEERING FOR  
SPECIFICATIONS AND CALCULATIONS.

Pennyworth Homes

Got Land? Let's Build!  
PennyworthHomes.com

EXHIBIT "A"

PLAN: GRANBURY

CUSTOMER NAME:

MR. & MRS. MCGAUGHEY

HEATED LIVING AREA

GROUND FLOOR: 1496

SECOND FLOOR: N/A

OTHER: N/A

TOTAL HEATED: 1496

NON-HEATED  
LIVING AREA

PORCH: 132

GARAGE: N/A

OTHER: N/A

TOTAL U/R 1628

IMPORTANT-PLEASE READ  
BELOW CAREFULLY

OUR SALES BROCHURES AND OTHER ADVERTISING LITERATURE ARE INTENDED TO GENERALLY REFLECT AND DEPICT THE STYLES AND QUALITY OF HOMES WE BUILD THROUGHOUT A PORTION OF THE UNITED STATES. OUR SALES MODELS ARE DESIGNED AND BUILT TO GENERALLY CONFORM WITH A VARIETY OF LOCAL CUSTOMS, PRACTICES, AND BUILDING CODES PREVALENT OR IN EFFECT IN THE IMMEDIATE AREA SURROUNDING THE LOCATION OF THOSE MODELS. THIS SET OF PLANS IS AN ACTUAL PART OF OUR CONTRACT WITH YOU AND, AS SUCH, IS INTENDED TO TAKE PRIORITY OVER ANYTHING IN CONFLICT WITH IT CONTAINED IN OUR ADVERTISING LITERATURE, OUR SALES MODELS AND EVEN OUR ORAL SALES PRESENTATION. NO CHANGE, MODIFICATION, OR REVISION OF THESE PRINTED PLANS SHALL BE BINDING ON THE PARTIES UNLESS SET FORTH ON THESE PLANS OR OTHERWISE REDUCED TO WRITING AND EXECUTED BY SAID PARTIES. PLEASE REVIEW THESE PLANS ALONG WITH "EXHIBIT B" OF YOUR CONTRACT CAREFULLY AND MAKE CERTAIN BEFORE YOU SIGN THEM THAT THEY ACCURATELY REPRESENT THE HOME YOU ARE PURCHASING. ADDITIONALLY, PENNYWORTH HOMES INC. HEREBY RESERVES THE RIGHT TO SUBSTITUTE MATERIALS OF EQUIVALENT QUALITY AND/OR TECHNIQUES OF ASSEMBLY AND/OR CONSTRUCTION METHODS FROM THAT CONTAINED IN THESE PLANS OR SPECIFIED IN EXHIBIT "B" WHERE NECESSARY TO ACCOMMODATE DIFFERENCES IN LOCAL CODES, GEOGRAPHIC CUSTOMS, OPTION SELECTION AND AVAILABILITY OF MATERIALS. ALL MATERIALS (LUMBER OR OTHER BUILDING SUPPLIES) DELIVERED TO JOBSITE WHICH ARE IN EXCESS OF THOSE REQUIRED TO CONSTRUCT THE HOUSE AS AGREED REMAIN THE PROPERTY OF PENNYWORTH HOMES INC.

NOTE:  
PENNYWORTH HOMES INC. RESERVES THE RIGHT TO ONLY MAKE CHANGES TO PLANS, REQUESTED BY BUYERS, THAT PENNYWORTH HOMES INC. DEEMS TO BE AESTHETICALLY, ARCHITECTURALLY, AND STRUCTURALLY SOUND.

THIS PLAN REFLECTS THE DESIGN  
AS PER BUYERS' FINAL APPROVED  
SIGNED PLANS DATED 5/30/2006.  
CHANGES MADE TO REPLICATE  
ENGINEERS NOTES AND  
CALCULATIONS.

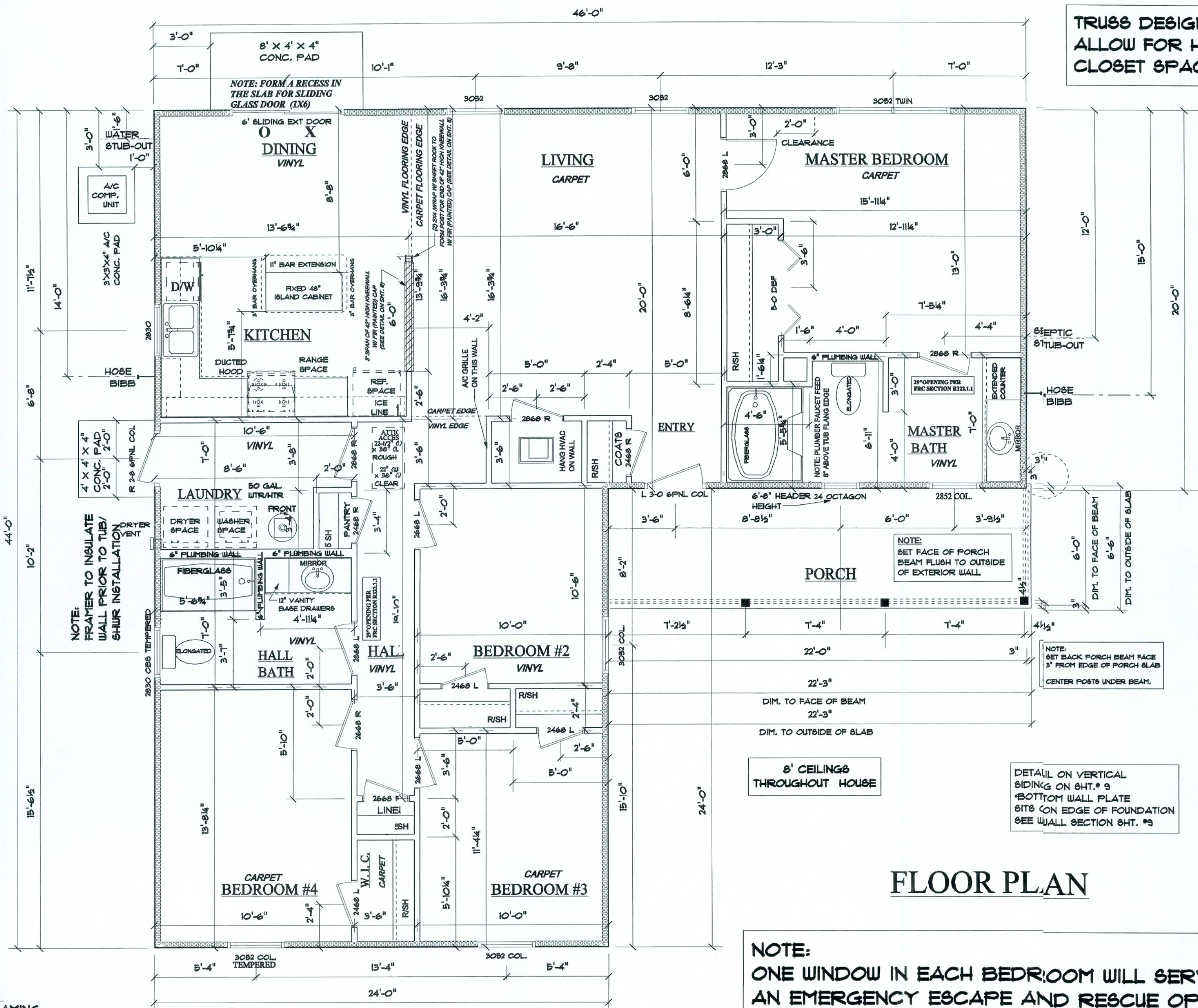
CONSTRUCTION PLANS

SCALE: 1/4" = 1'-0"

DRAWN BY: PLAN DATE: PAGE

BAA July 27, 2006 3

JOB# 06-04-0050 OF 9



TRUSS DESIGNER TO  
ALLOW FOR HYAC  
CLOSET SPACE

FLOOR PLAN

NOTE:  
ONE WINDOW IN EACH BEDROOM WILL SERVE AS  
AN EMERGENCY ESCAPE AND RESCUE OPENING

NOTE:  
ALL WINDOWS TO  
BE VINYL

NOTE:  
ALL INTERIOR DOORS  
TO HAVE 82-1/2" R.O.  
HEIGHT FROM FINISHED  
FLOOR.

NOTE: BUILDER IS TO CONFIRM  
ROUGH OPENINGS BEFORE FRAMING.

WINDOW SCHEDULE

QTY	MANUFACTURER	SERIES	CALL-OUT SIZE	ROUGH OPENING
1	SILVERLINE	2800	2830 O.B. TEMPERED	32-1/2" X 36-1/2"
1	SILVERLINE	2800	2830	32-1/2" X 36-1/2"
2	SILVERLINE	2800	3052	36-1/2" X 62-1/2"
1	SILVERLINE	2800	3052 TWIN	72-1/2" X 62-1/2"
1	SILVERLINE	2800	2852 COL.	32-1/2" X 62-1/2"
2	SILVERLINE	2800	3052 COL.	36-1/2" X 62-1/2"
1	SILVERLINE	2800	3052 COL. TEMP.	36-1/2" X 62-1/2"
1			24" OCTAGON	

INT. DOOR SCHEDULE

QTY	CALL-OUT SIZE	ROUGH OPENING
3	2468 L	30" X 82-1/2"
2	2468 R	30" X 82-1/2"
2	2668 L	32" X 82-1/2"
2	2668 R	32" X 82-1/2"
2	2868 L	34" X 82-1/2"
3	2868 R	34" X 82-1/2"
1	5/0 DBF	62" X 82-1/2"

EXT. DOOR SCHEDULE

QTY	MANUFACTURER	SERIES	CALL-OUT SIZE	ROUGH OPENING
1	SMOOTH FIBERGLASS	300	3068 1/8 STD. SINGLE L 6PNL. COL.	38" X 82-1/2"
1	SMOOTH FIBERGLASS	300	6068 PATIO (R)	74" X 82-1/2"
1	SMOOTH FIBERGLASS	300	2868 0/8 STD. SINGLE R 6PNL. COL.	34" X 82-1/2"

REV. # REV. DATE: DRAWN BY: DISCRIPTION OF REVISION



OUR SALES BROCHURES AND OTHER ADVERTISING LITERATURE ARE INTENDED TO GENERALLY REFLECT AND DEPICT THE STYLES AND QUALITY OF HOMES WE BUILD THROUGHOUT A PORTION OF THE UNITED STATES. OUR SALES MODELS ARE DESIGNED AND BUILT TO GENERALLY CONFORM WITH A VARIETY OF LOCAL CUSTOMS, PRACTICES, AND BUILDING CODES PREVALENT OR IN EFFECT IN THE IMMEDIATE AREA SURROUNDING THE LOCATION OF THOSE MODELS. THIS SET OF PLANS IS AN ACTUAL PART OF OUR CONTRACT WITH YOU AND, AS SUCH, IS INTENDED TO TAKE PRIORITY OVER ANYTHING IN CONFLICT WITH IT CONTAINED IN OUR ADVERTISING LITERATURE, OUR SALES MODELS AND EVEN OUR ORAL SALES PRESENTATION. NO CHANGE, MODIFICATION, OR REVISION OF THESE PRINTED PLANS SHALL BE BINDING ON THE PARTIES UNLESS SET FORTH ON THESE PLANS OR OTHERWISE REDUCED TO WRITING AND EXECUTED BY SAID PARTIES. PLEASE REVIEW THESE PLANS ALONG WITH "EXHIBIT B" OF YOUR CONTRACT CAREFULLY AND MAKE CERTAIN BEFORE YOU SIGN THEM THAT THEY ACCURATELY REPRESENT THE HOME YOU ARE PURCHASING. ADDITIONALLY, PENNYWORTH HOMES INC. HEREBY RESERVES THE RIGHT TO SUBSTITUTE MATERIALS OF EQUIVALENT QUALITY AND/OR TECHNIQUES OF ASSEMBLY AND/OR CONSTRUCTION METHODS FROM THAT CONTAINED IN THESE PLANS OR SPECIFIED IN EXHIBIT "B" WHERE NECESSARY TO ACCOMMODATE DIFFERENCES IN LOCAL CODES, GEOGRAPHIC CUSTOMS, OPTION SELECTION AND AVAILABILITY OF MATERIALS. ALL MATERIALS (LUMBER, OR OTHER BUILDING SUPPLIES) DELIVERED TO JOBSITE WHICH ARE IN EXCESS OF THOSE REQUIRED TO CONSTRUCT THE HOUSE AS AGREED REMAIN THE PROPERTY OF PENNYWORTH HOMES INC.

NOTE:  
PENNYWORTH HOMES INC. RESERVES THE RIGHT TO ONLY MAKE CHANGES TO PLANS, REQUESTED BY BUYERS, THAT PENNYWORTH HOMES INC. DEEMS TO BE AESTHETICALLY, ARCHITECTURALLY, AND STRUCTURALLY SOUND.

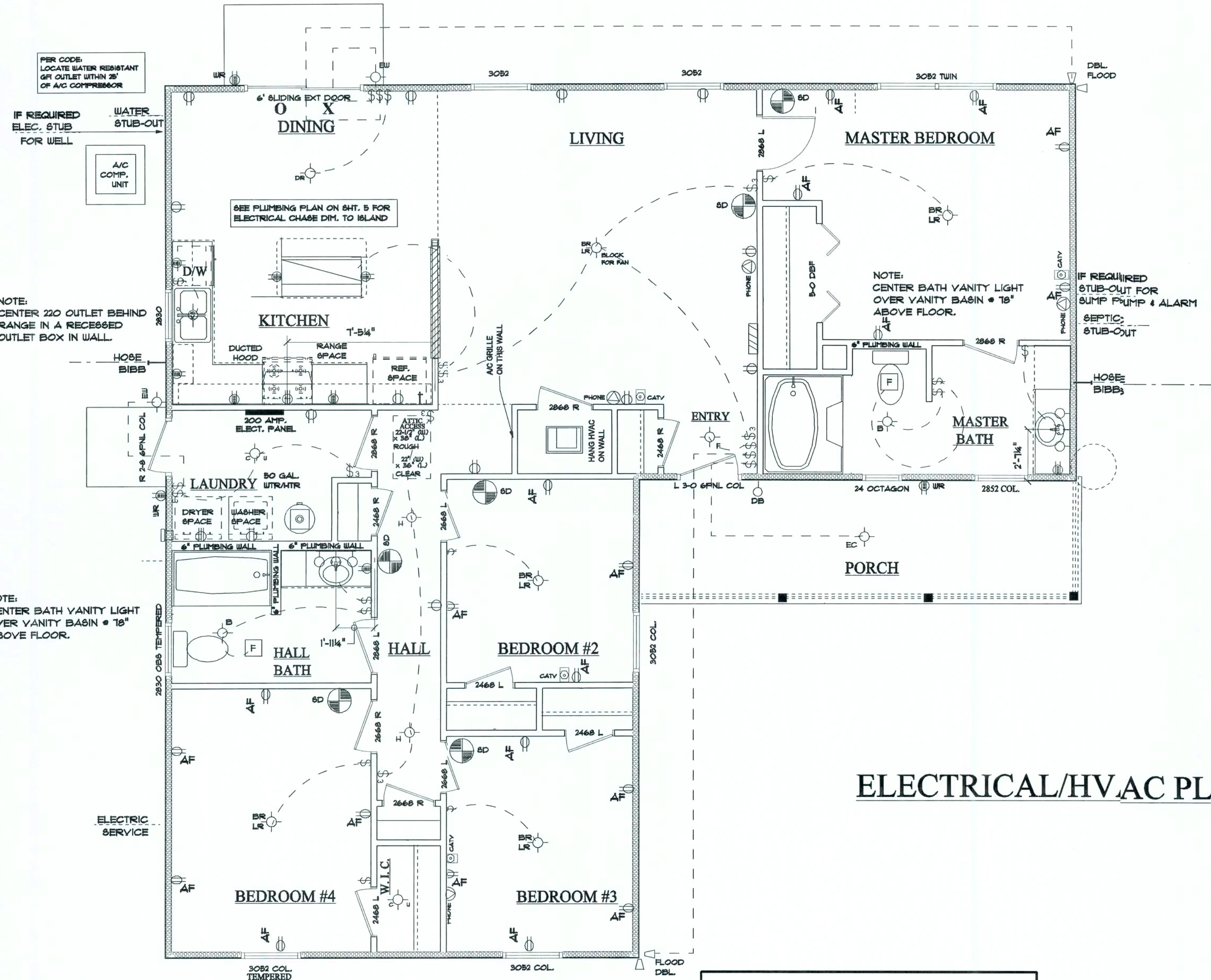
THIS PLAN REFLECTS THE DESIGN  
AS PER BUYERS' FINAL APPROVED  
SIGNED PLANS DATED 5/30/2006  
CHANGES MADE TO REPLICATE  
ENGINEERS NOTES AND  
CALCULATIONS.

CONSTRUCTION PLANS

SCALE: 1/4" = 1'-0"

DRAWN BY: BAA PLAN DATE: July 27, 2006 PAGE 4

JOB# 06-04-0050 OF 9



## ELECTRICAL/HVAC PLAN

### NOTES:

ELECTRICAL/HVAC FIXTURES SHOWN ON THIS DRAWING ARE LOCATED IN ACCORDANCE WITH P.W.H. HOMES SPECIFICATIONS. DO NOT RELOCATE ANY FIXTURE WITHOUT PRIOR APPROVAL FROM THE CONSTRUCTION SUPERVISOR.

P.W.H. HOMES RESERVES THE RIGHT TO MAKE CHANGES TO THE ELECTRICAL LAYOUT TO MEET NECESSARY ELECTRICAL OR BUILDING CODES. CHANGES MAY ALSO BE MADE AT THE DISCRETION OF THE BUILDER OR ELECTRICIAN DUE TO HOUSE FRAMING OR ELECTRICAL INSTALLATION TECHNIQUES.

REV.#	REV. DATE	DRAWN BY	DISCRIPTION OF REVISION

### ELECTRICAL SYMBOLS LEGEND

	LIVING ROOM/ BEDROOM BLOCK FOR FAN		EXTERIOR CEILING		SWITCH SINGLE POLE		GFI W/R		CHIMES (7' ABOVE FLOOR)		CABLE T.V. JACK
	BATH (OVER MIRROR)		HALL FIXTURE		SWITCH THREE WAY		VIISO PLATE		CHIMES BUTTN		ELECTRICAL PANEL
	BREAKFAST NOOK		EXTERIOR WALL		ARC FAULT		LARGE ROUND FLOURESCENT KITCHEN (36\"/>		SMOKE DETECTOR		RECESSED LIGHT
	BATH (MAIN)		EXTERIOR FLOOD		OUTLET		BATH FAN		HANGING LIGHT FIXTURE		EYEBALL LIGHT
	CLOSET/ UTILITY FIXTURE		FOYER FIXTURE		SPLIT OUTLET		PHONE JACK		WALL PHONE JACK		CEILING FAN
	DINING ROOM		GARAGE/KEYLESS/ATTIC		220V OUTLET-RECESSED BOX		UTILITY FLOURESCENT		4-BULB FLOURESCENT KITCHEN		
	KITCHEN SINK FIXTURE		LIVING ROOM/ BEDROOM FIXTURE		OUTLET GFI		RECESSED LIGHT (TUB / SHOWER)				
			KEYLESS FIXTURE, BLOCKED FOR FUTURE FAN		RECESSED LIGHT (KITCHEN SINK)		2-BULB FLOURESCENT CLOSET				



EXHIBIT "A"

PLAN: GRANBURY

CUSTOMER NAME:

MR. & MRS. MCGAUGHEY  
HEATED LIVING AREA

GROUND FLOOR: 1496  
SECOND FLOOR: N/A  
OTHER: N/A  
TOTAL HEATED: 1496

NON-HEATED  
LIVING AREA

PORCH: 132  
GARAGE: N/A  
OTHER: N/A  
TOTAL U/R 1628

IMPORTANT-PLEASE READ  
BELOW CAREFULLY

OUR SALES BROCHURES AND OTHER ADVERTISING LITERATURE ARE INTENDED TO GENERALLY REFLECT AND DEPICT THE STYLES AND QUALITY OF HOMES WE BUILD THROUGHOUT A PORTION OF THE UNITED STATES. OUR SALES MODELS ARE DESIGNED AND BUILT TO GENERALLY CONFORM WITH A VARIETY OF LOCAL CUSTOMS, PRACTICES, AND BUILDING CODES PREVALENT OR IN EFFECT IN THE IMMEDIATE AREA SURROUNDING THE LOCATION OF THOSE MODELS. THIS SET OF PLANS IS AN ACTUAL PART OF OUR CONTRACT WITH YOU AND, AS SUCH, IS INTENDED TO TAKE PRIORITY OVER ANYTHING IN CONFLICT WITH IT CONTAINED IN OUR ADVERTISING LITERATURE, OUR SALES MODELS AND EVEN OUR ORAL SALES PRESENTATION. NO CHANGE, MODIFICATION, OR REVISION OF THESE PRINTED PLANS SHALL BE BINDING ON THE PARTIES UNLESS SET FORTH ON THESE PLANS OR OTHERWISE REDUCED TO WRITING AND EXECUTED BY SAID PARTIES. PLEASE REVIEW THESE PLANS ALONG WITH "EXHIBIT B" OF YOUR CONTRACT CAREFULLY AND MAKE CERTAIN BEFORE YOU SIGN THEM THAT THEY ACCURATELY REPRESENT THE HOME YOU ARE PURCHASING. ADDITIONALLY, PENNYWORTH HOMES INC. HEREBY RESERVES THE RIGHT TO SUBSTITUTE MATERIALS OF EQUIVALENT QUALITY AND/OR TECHNIQUES OF ASSEMBLY AND/OR CONSTRUCTION METHODS FROM THAT CONTAINED IN THESE PLANS OR SPECIFIED IN EXHIBIT "B" WHERE NECESSARY TO ACCOMMODATE DIFFERENCES IN LOCAL CODES, GEOGRAPHIC CUSTOMS, OPTION SELECTION AND AVAILABILITY OF MATERIALS. ALL MATERIALS, LUMBER, OR OTHER BUILDING SUPPLIES DELIVERED TO JOBSITE WHICH ARE IN EXCESS OF THOSE REQUIRED TO CONSTRUCT THE HOUSE AS AGREED REMAIN THE PROPERTY OF PENNYWORTH HOMES INC.

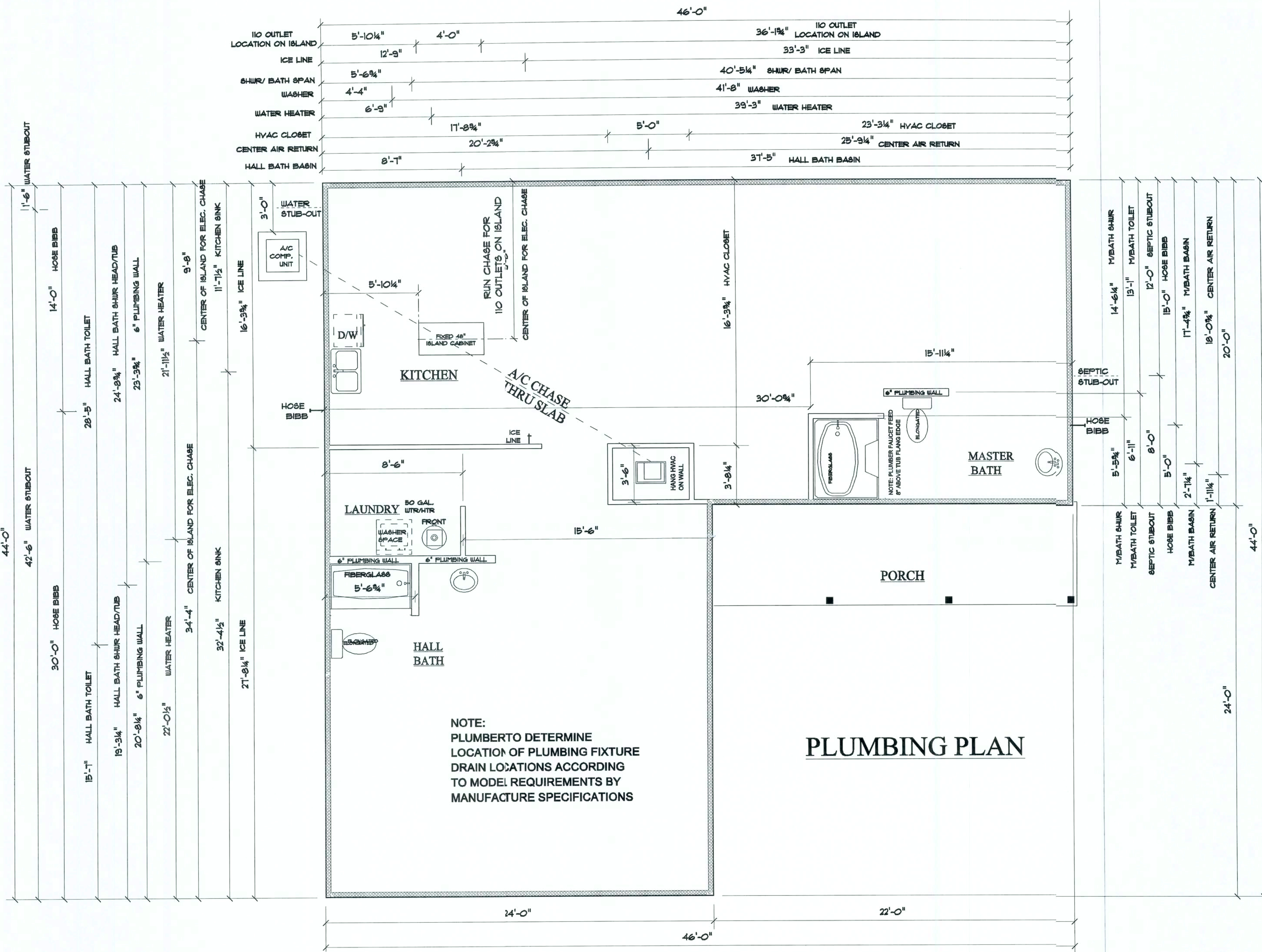
NOTE:  
PENNYWORTH HOMES INC. RESERVES THE RIGHT TO ONLY MAKE CHANGES TO PLANS, REQUESTED BY BUYERS, THAT PENNYWORTH HOMES INC. DEEMS TO BE AESTHETICALLY, ARCHITECTURALLY, AND STRUCTURALLY SOUND.

THIS PLAN REFLECTS THE DESIGN AS PER BUYERS' FINAL APPROVED SIGNED PLANS DATED 5/30/2006. CHANGES MADE TO REPLICATE ENGINEERS NOTES AND CALCULATIONS.

CONSTRUCTION PLANS

SCALE: 1/4" = 1'-0"

DRAWN BY:	PLAN DATE:	PAGE
BAA	July 27, 2006	5
JOB# 06-04-0050		OF 9



REV.#	REV. DATE:	DRAWN BY:	DISCRIPTION OF REVISION



EXHIBIT "A"  
PLAN: **GRANBURY**  
CUSTOMER NAME:  
**MR. & MRS. MCGAUGHEY**  
**HEATED LIVING AREA**

GROUND FLOOR: 1496  
SECOND FLOOR: N/A  
OTHER: N/A  
TOTAL HEATED: 1496

**NON-HEATED LIVING AREA**

PORCH: 132  
GARAGE: N/A  
OTHER: N/A  
TOTAL U/R: 1628

**IMPORTANT-PLEASE READ BELOW CAREFULLY**

OUR SALES BROCHURES AND OTHER ADVERTISING LITERATURE ARE INTENDED TO GENERALLY REFLECT AND DEPICT THE STYLES AND QUALITY OF HOMES WE BUILD THROUGHOUT A PORTION OF THE UNITED STATES. OUR SALES MODELS ARE DESIGNED AND BUILT TO GENERALLY CONFORM WITH A VARIETY OF LOCAL CUSTOMS, PRACTICES, AND BUILDING CODES PREVALENT OR IN EFFECT IN THE IMMEDIATE AREA SURROUNDING THE LOCATION OF THOSE MODELS. THIS SET OF PLANS IS AN ACTUAL PART OF OUR CONTRACT WITH YOU AND, AS SUCH, IS INTENDED TO TAKE PRIORITY OVER ANYTHING IN CONFLICT WITH IT CONTAINED IN OUR ADVERTISING LITERATURE, OUR SALES MODELS AND EVEN OUR ORAL SALES PRESENTATION. NO CHANGE, MODIFICATION, OR REVISION OF THESE PRINTED PLANS SHALL BE BINDING ON THE PARTIES UNLESS SET FORTH ON THESE PLANS OR OTHERWISE REDUCED TO WRITING AND EXECUTED BY SAID PARTIES. PLEASE REVIEW THESE PLANS ALONG WITH "EXHIBIT B" OF YOUR CONTRACT CAREFULLY AND MAKE CERTAIN BEFORE YOU SIGN THEM THAT THEY ACCURATELY REPRESENT THE HOME YOU ARE PURCHASING. ADDITIONALLY, PENNYWORTH HOMES INC. HEREBY RESERVES THE RIGHT TO SUBSTITUTE MATERIALS OF EQUIVALENT QUALITY AND/OR TECHNIQUES OF ASSEMBLY AND/OR CONSTRUCTION METHODS FROM THAT CONTAINED IN THESE PLANS OR SPECIFIED IN EXHIBIT "B" WHERE NECESSARY TO ACCOMMODATE DIFFERENCES IN LOCAL CODES, GEOGRAPHIC CUSTOMS, OPTION SELECTION AND AVAILABILITY OF MATERIALS. ALL MATERIALS (LUMBER, OR OTHER BUILDING SUPPLIES) DELIVERED TO JOBSITE WHICH ARE IN EXCESS OF THOSE REQUIRED TO CONSTRUCT THE HOUSE AS AGREED REMAIN THE PROPERTY OF PENNYWORTH HOMES INC.

**NOTE:**  
PENNYWORTH HOMES INC. RESERVES THE RIGHT TO ONLY MAKE CHANGES TO PLANS, REQUESTED BY BUYERS, THAT PENNYWORTH HOMES INC. DEEMS TO BE AESTHETICALLY, ARCHITECTURALLY, AND STRUCTURALLY SOUND.

THIS PLAN REFLECTS THE DESIGN AS PER BUYERS' FINAL APPROVED SIGNED PLANS DATED 5/30/2006. CHANGES MADE TO REPLICATE ENGINEERS NOTES AND CALCULATIONS.

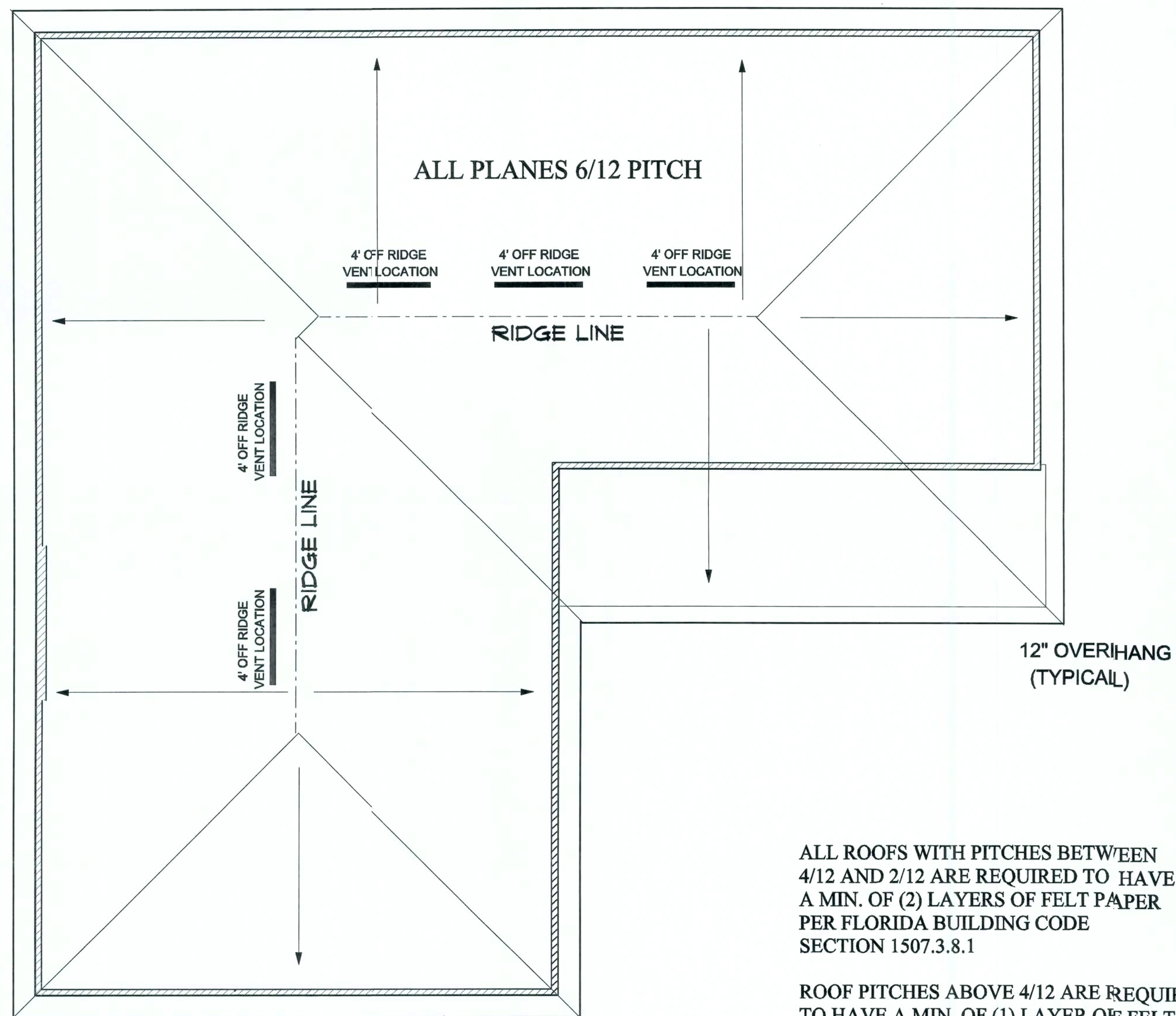
CONSTRUCTION PLANS

SCALE: 1/4" = 1'-0"

DRAWN BY:	PLAN DATE:	PAGE
BAA	July 27, 2006	6
JOB# 06-04-0050		OF 9

ALLOW FOR MIN. 24" BETWEEN OFF RIDGE VENTS

CFF RIDGE VENTS ARE REQUIRED  
DO NOT PLACE ON FRONT OF HOUSE



ALL ROOFS WITH PITCHES BETWEEN 4/12 AND 2/12 ARE REQUIRED TO HAVE A MIN. OF (2) LAYERS OF FELT PAPER PER FLORIDA BUILDING CODE SECTION 1507.3.8.1

ROOF PITCHES ABOVE 4/12 ARE REQUIRED TO HAVE A MIN. OF (1) LAYER OF FELT PAPER PER FLORIDA BUILDING CODE SECTION 1507.3.8.2

**ROOF LAYOUT PLAN**

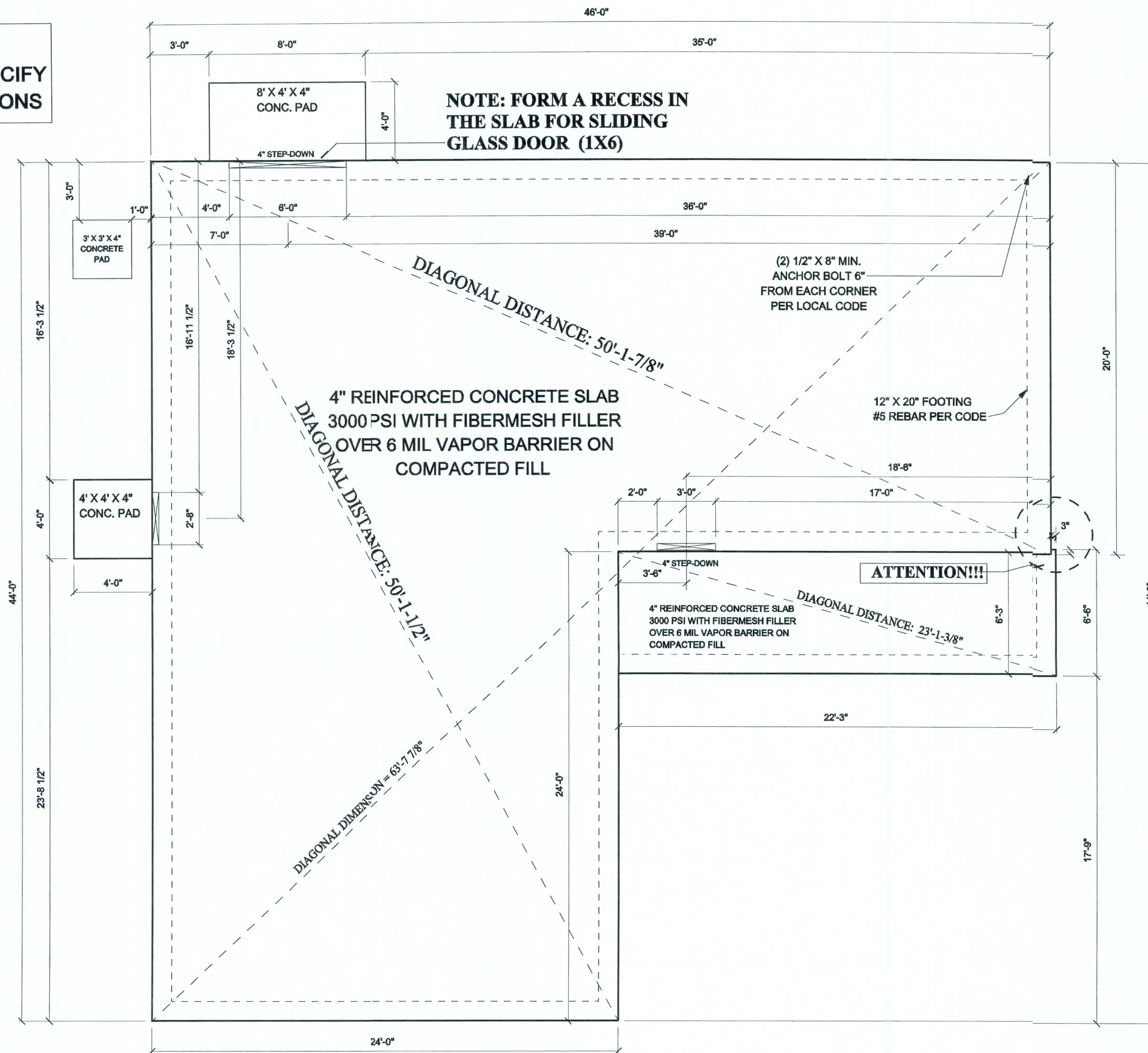
**NOTE:**  
(AS REQUIRED BY CODE)  
  
FIGURE AIR EXCHANGE:  
AREA UNDER ROOF IS DIVIDED BY 300  
(FOR EVERY 300 SQ.FT. UNDER ROOF =  
1 SQ. FT. FREE AIR VENTILATION)  
  
QUOTIENT DIVIDED BY 2 = (X).  
  
(X) X 144 = TOTAL SQ. IN.  
FREE AIR REQUIRED  
  
RIDGE VENT SIZED BY 4' /6' & 8' LN. FEET.  
\*CALCULATE NEEDED AIR EXCHANGE FOR  
BOTH UPPER AND LOWER EXCHANGE.  
\* FIND AMOUNT OF AIR EXCHANGE PROVIDED  
BY RIDGE VENTS PER LN. FT.  
  
IF AMOUNT OF AIR EXCHANGE IS NOT  
ENOUGH WITH JUST RIDGE VENTS FOR  
UPPER AIR EXCHANGE AND SOFFIT VENTS  
FOR LOWER AIR EXCHANGE.  
  
THEN APPLY APROP. SIZE AND NUMBER OF  
OFF RIDGE VENTS ACCORDING TO  
AMOUNT OF TOTAL SQ. IN. OF FREE AIR REQUIRED.  
\*FIND AMOUNT OF AIR EXCHANGE PROVIDED  
BY OFF RIDGE VENTS PER LN. FT.

**NOTE!:**  
REFER TO ENGINEERING FOR  
SPECIFICATIONS AND CALCULATIONS.

REV.#	REV. DATE	DRAWN BY	DISCRIPTION OF REVISION



ATTENTION:  
ENGINEER TO SPECIFY  
TIE DOWN LOCATIONS



## FOUNDATION PLANS

**NOTE!:**  
REFER TO ENGINEERING FOR  
SPECIFICATIONS AND CALCULATIONS.

**Pennyworth Homes**

Got Land? Let's Build!  
PennyworthHomes.com FL-CR0008477

EXHIBIT "A"

PLAN: GRANBURY

CUSTOMER NAME:  
MR. & MRS. MCGAUGHEY  
HEATED LIVING AREA

GROUND FLOOR: 1496  
SECOND FLOOR: N/A  
OTHER: N/A  
TOTAL HEATED: 1496

NON-HEATED  
LIVING AREA

PORCH: 132  
GARAGE: N/A  
OTHER: N/A  
TOTAL U/R: 1628

IMPORTANT-PLEASE READ  
BELOW CAREFULLY

OUR SALES BROCHURES AND OTHER ADVERTISING LITERATURE ARE INTENDED TO GENERALLY REFLECT AND DEPICT THE STYLES AND QUALITY OF HOMES WE BUILD THROUGHOUT A PORTION OF THE UNITED STATES. OUR SALES MODELS ARE DESIGNED AND BUILT TO GENERALLY CONFORM WITH A VARIETY OF LOCAL CUSTOMS, PRACTICES, AND BUILDING CODES PREVALENT OR IN EFFECT IN THE IMMEDIATE AREA SURROUNDING THE LOCATION OF THOSE MODELS. THIS SET OF PLANS IS AN ACTUAL PART OF OUR CONTRACT WITH YOU AND, AS SUCH, IS INTENDED TO TAKE PRIORITY OVER ANYTHING IN CONFLICT WITH IT CONTAINED IN OUR ADVERTISING LITERATURE, OUR SALES MODELS AND EVEN OUR ORAL SALES PRESENTATION. NO CHANGE, MODIFICATION, OR REVISION OF THESE PRINTED PLANS SHALL BE BINDING ON THE PARTIES UNLESS SET FORTH ON THESE PLANS OR OTHERWISE REDUCED TO WRITING AND EXECUTED BY SAID PARTIES. PLEASE REVIEW THESE PLANS ALONG WITH "EXHIBIT B" OF YOUR CONTRACT CAREFULLY AND MAKE CERTAIN BEFORE YOU SIGN THEM THAT THEY ACCURATELY REPRESENT THE HOME YOU ARE PURCHASING. ADDITIONALLY, PENNYWORTH HOMES INC. HEREBY RESERVES THE RIGHT TO SUBSTITUTE MATERIALS OF EQUIVALENT QUALITY AND/OR TECHNIQUES OF ASSEMBLY AND/OR CONSTRUCTION METHODS FROM THAT CONTAINED IN THESE PLANS OR SPECIFIED IN EXHIBIT "B" WHERE NECESSARY TO ACCOMMODATE DIFFERENCES IN LOCAL CODES, GEOGRAPHIC CUSTOMS, OPTION SELECTION AND AVAILABILITY OF MATERIALS. ALL MATERIALS (LUMBER, OR OTHER BUILDING SUPPLIES) DELIVERED TO JOBSITE WHICH ARE IN EXCESS OF THOSE REQUIRED TO CONSTRUCT THE HOUSE AS AGREED REMAIN THE PROPERTY OF PENNYWORTH HOMES INC.

**NOTE:**  
PENNYWORTH HOMES INC. RESERVES THE RIGHT TO ONLY MAKE CHANGES TO PLANS, REQUESTED BY BUYERS, THAT PENNYWORTH HOMES INC. DEEMS TO BE AESTHETICALLY, ARCHITECTURALLY, AND STRUCTURALLY SOUND.

THIS PLAN REFLECTS THE DESIGN  
AS PER BUYERS' FINAL APPROVED  
SIGNED PLANS DATED 5/30/2006  
CHANGES MADE TO REPLICATE  
ENGINEERS NOTES AND  
CALCULATIONS.

CONSTRUCTION PLANS

SCALE: 1/4" = 1' 0"

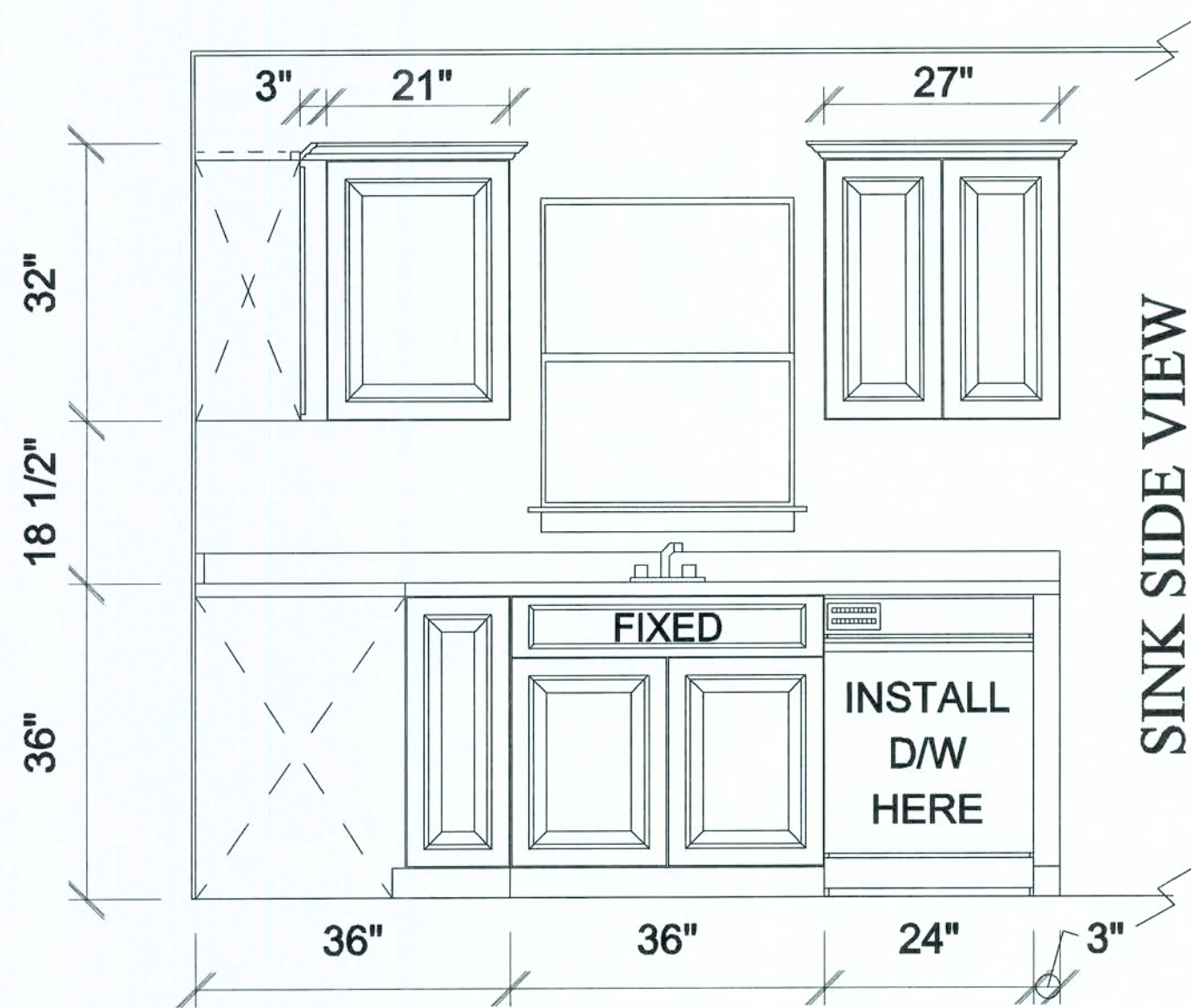
DRAWN BY: BAA PLAN DATE: July 27, 2006 PAGE 7

JOB# 06-04-0050 OF 9

REV.#	REV. DATE:	DRAWN BY:	DISCRIPTION OF REVISION

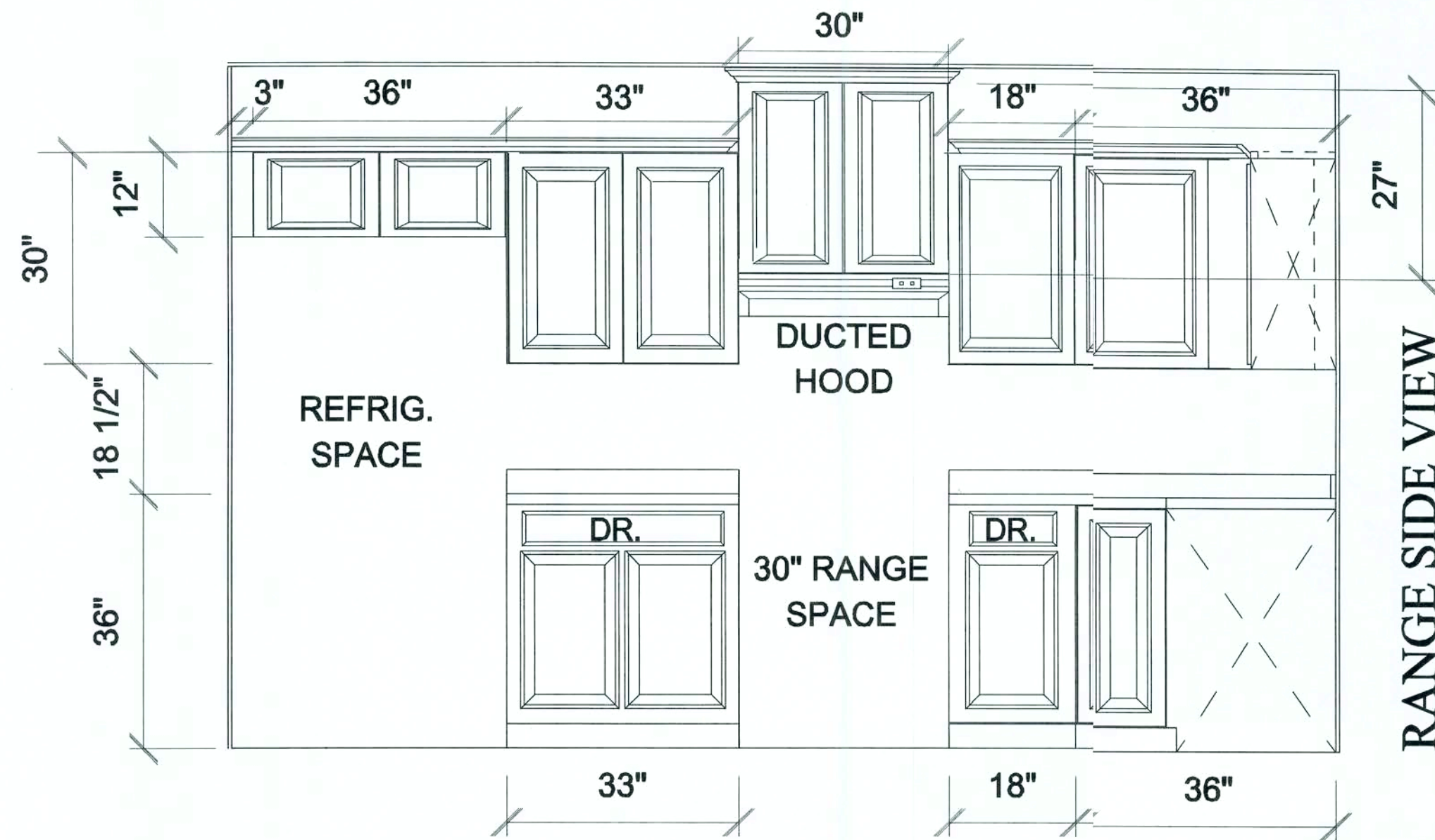


INSTALL CROWN MOLDING AROUND  
TOP OF KITCHEN WALL CABINETS.



SINK SIDE VIEW

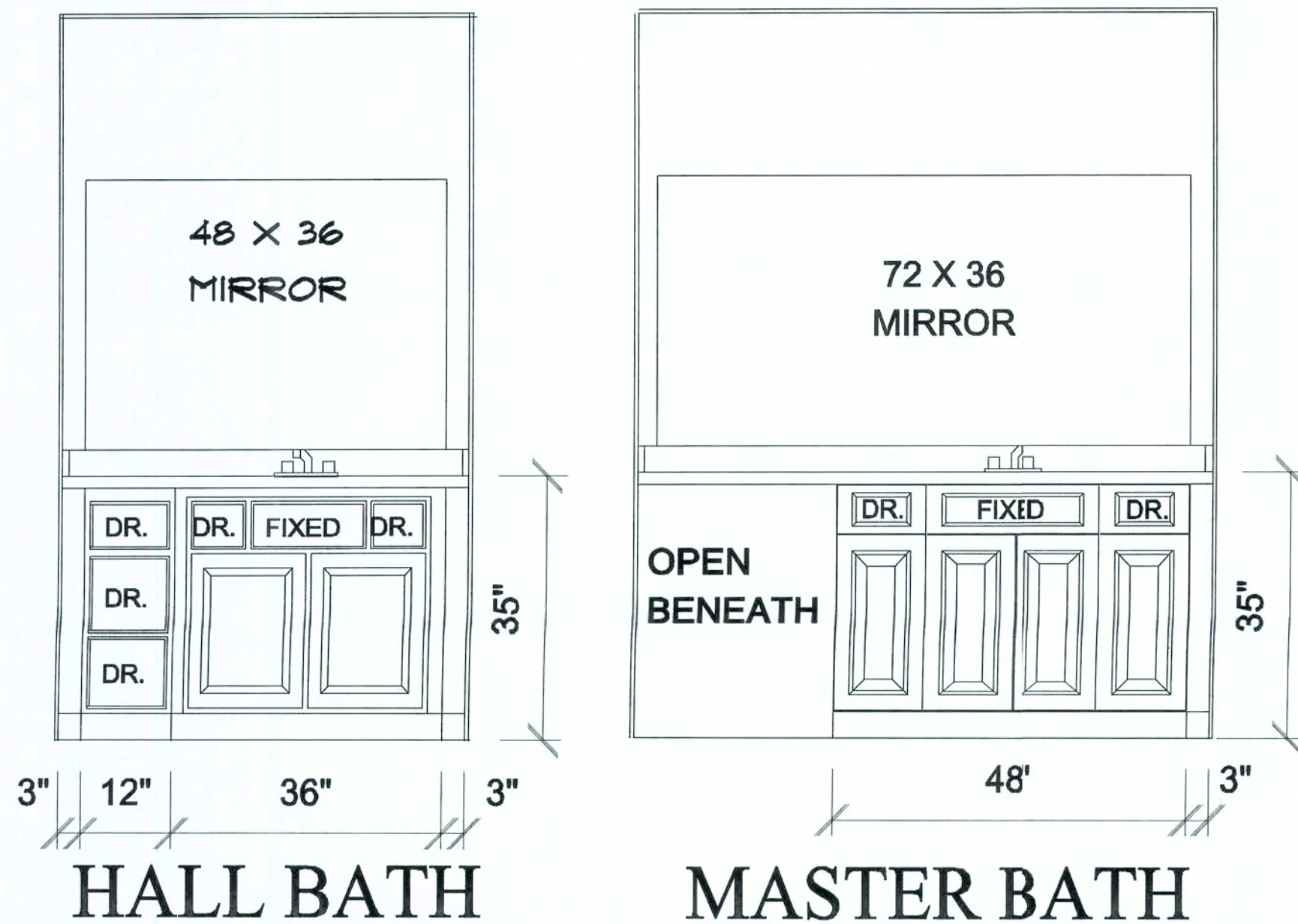
DUCTED HOOD CABINET ALLOW  
FOR CROWN MOULDING TO ALIGN  
FLUSH WITH FINISHED CEILING  
/ EXPOSED DUCT IN CABINET



RANGE SIDE VIEW

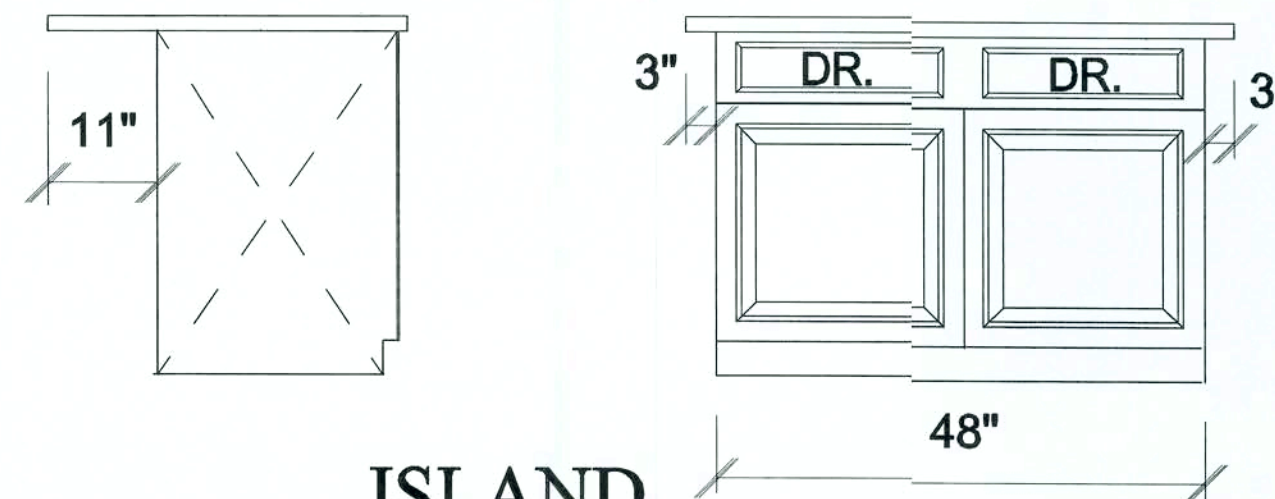
## KITCHEN CABINET ELEVATIONS

INSTALL QUARTER ROUND MOLDING  
AROUND BOTTOM OF ALL  
BASE CABINETS & VANITIES.



HALL BATH

MASTER BATH



ISLAND

CABINETS ARE SYMBOLIC,  
ACTUAL UNITS MAY VARI  
IN STYLE \*TO BE DETERMINED BY  
BUYER.

**Pennyworth Homes**

Got Land? Let's Build!  
PennyworthHomes.com FL-CRC0088477

EXHIBIT "A"

PLAN: GRANBURY

CUSTOMER NAME:  
MR. & MRS. MCGAUGHEY  
HEATED LIVING AREA

GROUND FLOOR: 1496  
SECOND FLOOR: N/A  
OTHER: N/A  
TOTAL HEATED: 1496

NON-HEATED  
LIVING AREA

PORCH: 132  
GARAGE: N/A  
OTHER: N/A  
TOTAL U/R 1628

IMPORTANT-PLEASE READ  
BELOW CAREFULLY

OUR SALES BROCHURES AND OTHER ADVERTISING LITERATURE ARE INTENDED TO GENERALLY REFLECT AND DEPICT THE STYLES AND QUALITY OF HOMES WE BUILD THROUGHOUT A PORTION OF THE UNITED STATES. OUR SALES MODELS ARE DESIGNED AND BUILT TO GENERALLY CONFORM WITH A VARIETY OF LOCAL CUSTOMS, PRACTICES, AND BUILDING CODES PREVALENT OR IN EFFECT IN THE IMMEDIATE AREA SURROUNDING THE LOCATION OF THOSE MODELS. THIS SET OF PLANS IS AN ACTUAL PART OF OUR CONTRACT WITH YOU AND, AS SUCH, IS INTENDED TO TAKE PRIORITY OVER ANYTHING IN CONFLICT WITH IT CONTAINED IN OUR ADVERTISING LITERATURE, OUR SALES MODELS AND EVEN OUR ORAL SALES PRESENTATION. NO CHANGE, MODIFICATION, OR REVISION OF THESE PRINTED PLANS SHALL BE BINDING ON THE PARTIES UNLESS SET FORTH ON THESE PLANS OR OTHERWISE REDUCED TO WRITING AND EXECUTED BY SAID PARTIES. PLEASE REVIEW THESE PLANS ALONG WITH "EXHIBIT B" OF YOUR CONTRACT CAREFULLY AND MAKE CERTAIN BEFORE YOU SIGN THEM THAT THEY ACCURATELY REPRESENT THE HOME YOU ARE PURCHASING. ADDITIONALLY, PENNYWORTH HOMES INC. HEREBY RESERVES THE RIGHT TO SUBSTITUTE MATERIALS OF EQUIVALENT QUALITY AND/OR TECHNIQUES OF ASSEMBLY AND/OR CONSTRUCTION METHODS FROM THAT CONTAINED IN THESE PLANS OR SPECIFIED IN EXHIBIT "B" WHERE NECESSARY TO ACCOMMODATE DIFFERENCES IN LOCAL CODES, GEOGRAPHIC CUSTOMS, OPTION SELECTION AND AVAILABILITY OF MATERIALS. ALL MATERIALS (LUMBER, OR OTHER BUILDING SUPPLIES) DELIVERED TO JOBSITE WHICH ARE IN EXCESS OF THOSE REQUIRED TO CONSTRUCT THE HOUSE AS AGREED REMAIN THE PROPERTY OF PENNYWORTH HOMES INC.

NOTE:  
PENNYWORTH HOMES INC. RESERVES THE RIGHT TO ONLY MAKE CHANGES TO PLANS, REQUESTED BY BUYERS, THAT PENNYWORTH HOMES INC. DEEMS TO BE AESTHETICALLY, ARCHITECTURALLY, AND STRUCTURALLY SOUND.

THIS PLAN REFLECTS THE DESIGN AS PER BUYERS' FINAL APPROVED SIGNED PLANS DATED 5/30/2006. CHANGES MADE TO REPLICATE ENGINEERS NOTES AND CALCULATIONS.

CONSTRUCTION PLANS

NOT TO SCALE

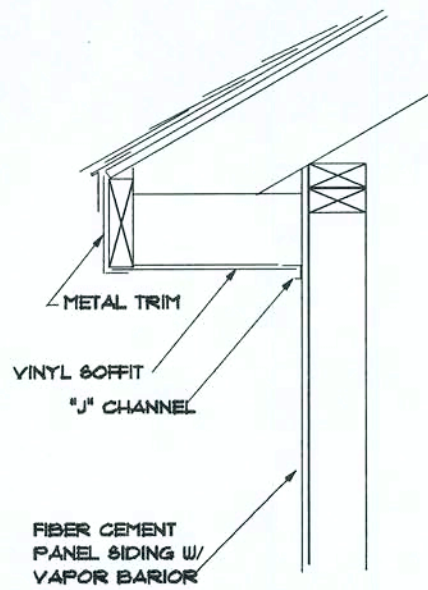
DRAWN BY: BAA PLAN DATE: July 27, 2006 PAGE: 8

JOB# 06-04-0050 OF 9

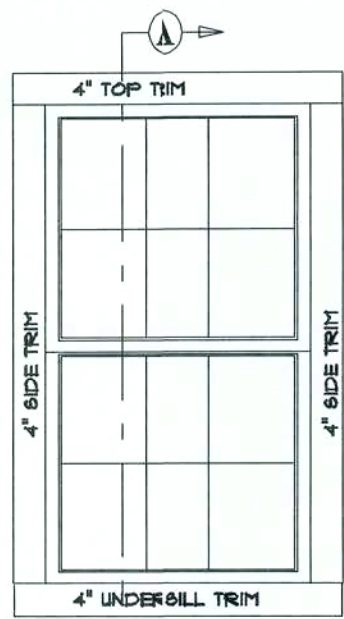
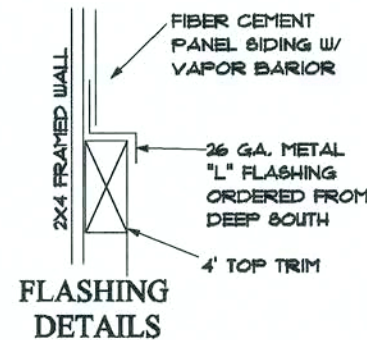
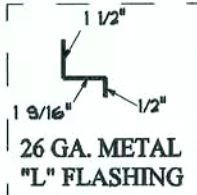
REV.#	REV. DATE	DRAWN BY	DISCRIPTION OF REVISION



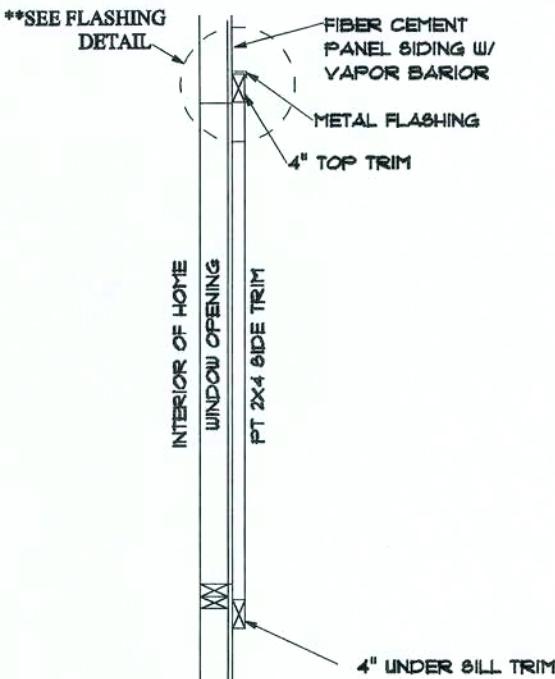
DETAILS FOR TRIMMING OUT FIBER CEMENT PANEL SIDING



PANEL SIDING



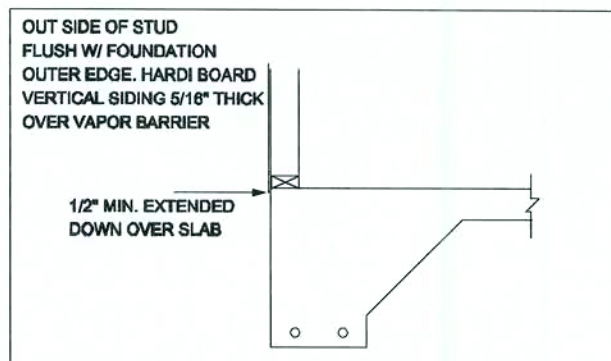
WINDOW TRIM DETAIL FOR GABLED END WALL



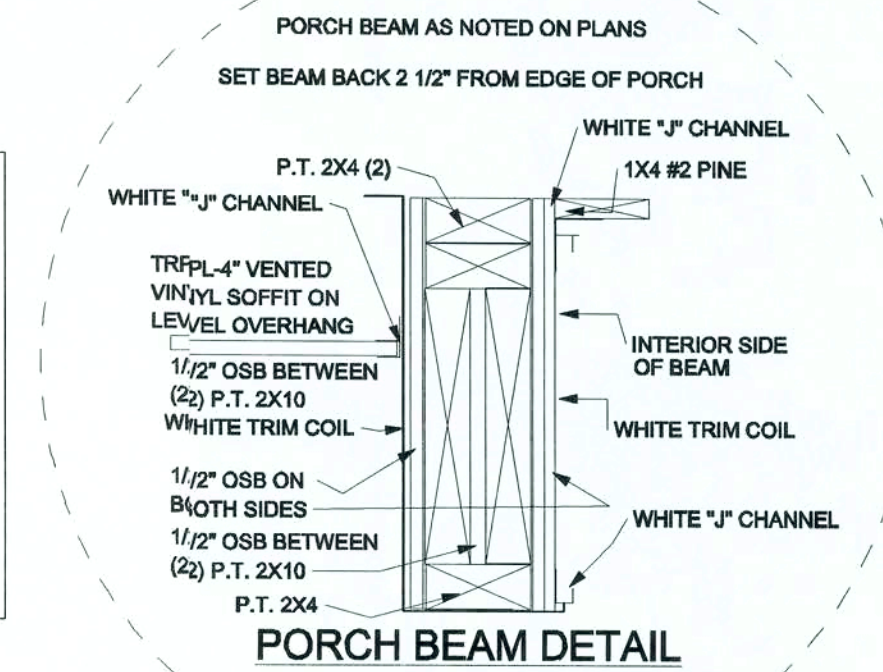
SECTION A-A

NOTE!:

REFER TO ENGINEERING FOR SPECIFICATIONS AND CALCULATIONS.



VERTICAL HARDI BOARD SIDING DETAIL



PORCH BEAM DETAIL

SUBJECT TO CHANGE PER ENGINEERING REQUIREMENTS TO MEET LOCAL CODE

PENNYWORTH HOMES TYPICAL WALL SECTION FOR MONOLITHIC SLAB FLOOR SYSTEM

SET OUTSIDE EDGE OF PORCH BEAM BACK 3" FROM EDGE OF PORCH SLAB

2X6 WRAPPED W/ ALUM. TRIM

PORCH HEADER WRAPPED W/ FIBER CEMENT SIDING.

VINYL SOFFITS VENTED

VINYL SOFFIT

4X4 PT POST W/ PVC SLEEVE

PW DECOR. POST

SET CENTER OF PORCH POST BACK 4-1/4" FROM EDGE OF PORCH SLAB 3-1/2" X 3-1/2"

SET POST SO THAT BOTTOM SLEEVE DOES NOT HANG OVER SLAB.

POST BASE PER ENGINEERING

FOOTER AS PER ENG. OR LOCAL CODE

REBAR ON ROD CHAIRS (SEE PLANS)

COMPACTED FILL

FOOTER AS PER ENG. OR LOCAL CODE

HURRICANE CLIP @ EACH TRUSS

METAL STRAP

APPROVED MANUFACTURED TRUSSES @ 24" O.C.

4" COMPOSITE TRIM BOARD

PORCH HEADER WRAPPED W/ FCS

4" COMPOSITE TRIM BOARD

1X4 #2 PINE LAID FLAT OR 7/16" OSB AS PER ENG. @ 16" O.C. FOR VINYL PORCH CEILING

ALUMINUM WINDOW

4" COMPOSITE TRIM BOARD

VERT. PANEL FIBER CEMENT SIDING

HOUSE WRAP

3000# PSI CONC. W/ FIBERMESH OR 6X6 10 GA. WELD WIRE

6MIL VAPOR BARRIER

6MIL VAPOR BARRIER

REBAR ON ROD CHAIRS (SEE PLANS)

NOTE: ALL METAL PRODUCTS USED ON PRESSURE TREATED LUMBER MUST BE HOT DIPPED GALVANIZED TO PREVENT DETERIORATION.

R-30 BLOWN INSULATION

\*R-30 F/G BLOWN INSULATION PER SPECS; LIVING AREA ONLY

\*5/8" OR 1/2" CEILING BOARD TAPED & FINISHED

2- 2X4 TOP PLATE

2 X 4 STUDS @ 16" O.C.

\*1/2" SHEET ROCK TAPED & FINISHED

\*R-13 KRAFT BACK INSULATION LIVING AREA ONLY PER SPECS

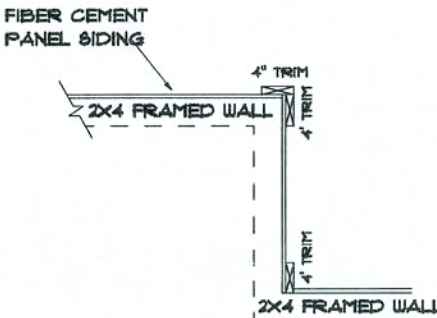
2 X 4 BORATE BOTTOM PLATE

3-1/2" SILL SEAL

tie down system see engineering for locations

4" CONC. MONOLITHIC SLAB W/10-GA 6X6 W.W.M. IF FIBERMESH CONC. IS NOT AVAILABLE

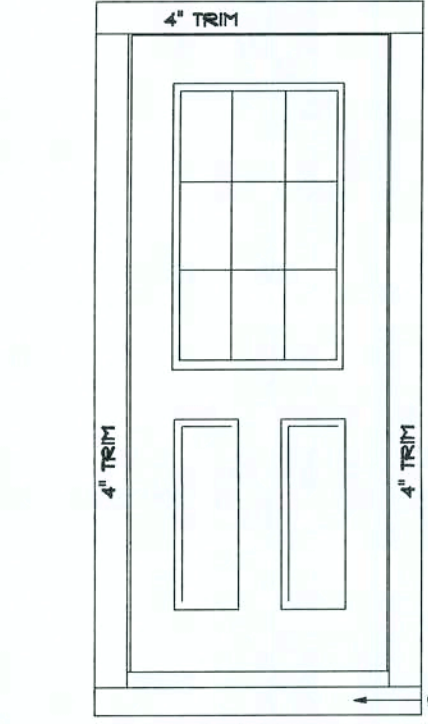
FLOORING AS SPECIFIED



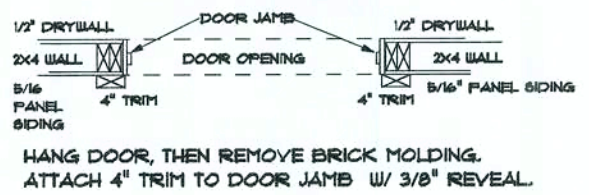
CORNER BOARD DETAIL

\* FOR OUTSIDE CORNERS THE 4" TRIM WILL ALWAYS BE ON THE FRONT & BACK SIDES OF HOME. THE 4" TRIM WILL BE ATTACHED TO THE LEFT & RIGHT SIDES.

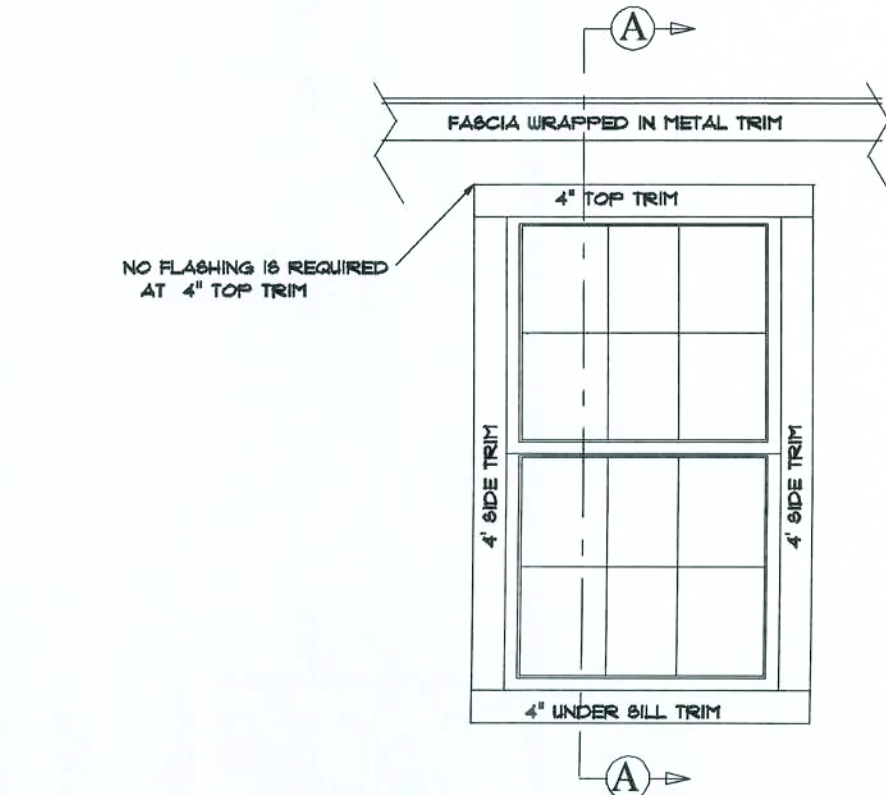
NOTE: FLASHING IS NOT REQUIRED ABOVE THE TOP TRIM OF DOORS ON GABLE END WALLS, DUE TO THE HIP JUST ABOVE THE DOOR.



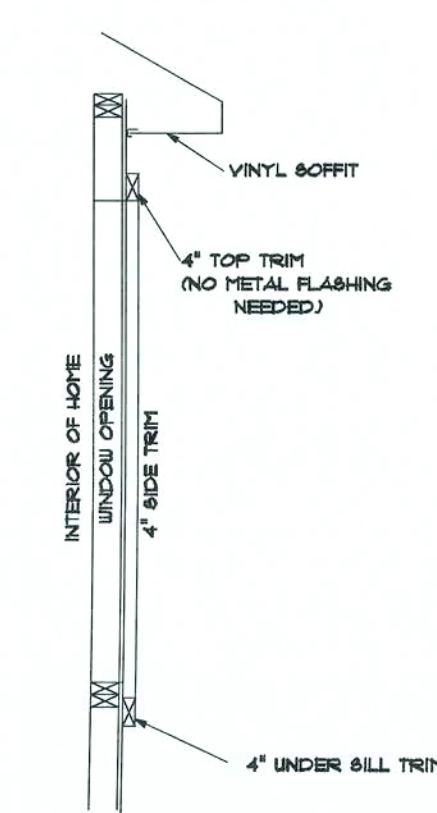
DOOR TRIM DETAIL



HANG DOOR, THEN REMOVE BRICK MOLDING. ATTACH 4" TRIM TO DOOR JAMB W/ 3/8" REVEAL.



PT WINDOW TRIM DETAIL FOR HIPPED END WALL



SECTION A-A

PENNYWORTH HOMES DESIGN & CONSTRUCTION DRAFTING & DESIGN DEPT. 5/8/2006

\*\*SUBJECT TO CHANGE WITHOUT NOTICE BY PWH HOME DESIGN AND CONSTRUCTION \*\*

REV.#	REV. DATE	DRAWN BY	DISCRIPTION OF REVISION

Pennyworth Homes

Got Land? Let's Build! PennyworthHomes.com FL-CRC068477

EXHIBIT "A"

PLAN: GRANBURY

CUSTOMER NAME:

MR. & MRS. MCGAUGHEY HEATED LIVING AREA

GROUND FLOOR: 1496  
SECOND FLOOR: N/A  
OTHER: N/A  
TOTAL HEATED: 1496

NON-HEATED LIVING AREA

PORCH: 132  
GARAGE: N/A  
OTHER: N/A  
TOTAL U/R 1628

IMPORTANT-PLEASE READ BELOW CAREFULLY

OUR SALES BROCHURES AND OTHER ADVERTISING LITERATURE ARE INTENDED TO GENERALLY REFLECT AND DEPICT THE STYLES AND QUALITY OF HOMES WE BUILD THROUGHOUT A PORTION OF THE UNITED STATES. OUR SALES MODELS ARE DESIGNED AND BUILT TO GENERALLY CONFORM WITH A VARIETY OF LOCAL CUSTOMS, PRACTICES, AND BUILDING CODES PREVALENT OR IN EFFECT IN THE IMMEDIATE AREA SURROUNDING THE LOCATION OF THOSE MODELS. THIS SET OF PLANS IS AN ACTUAL PART OF OUR CONTRACT WITH YOU AND, AS SUCH, IS INTENDED TO TAKE PRIORITY OVER ANYTHING IN CONFLICT WITH IT CONTAINED IN OUR ADVERTISING LITERATURE, OUR SALES MODELS AND EVEN OUR ORAL SALES PRESENTATION. NO CHANGE, MODIFICATION, OR REVISION OF THESE PRINTED PLANS SHALL BE BINDING ON THE PARTIES UNLESS SET FORTH ON THESE PLANS OR OTHERWISE REDUCED TO WRITING AND EXECUTED BY SAID PARTIES. PLEASE REVIEW THESE PLANS ALONG WITH "EXHIBIT B" OF YOUR CONTRACT CAREFULLY AND MAKE CERTAIN BEFORE YOU SIGN THEM THAT THEY ACCURATELY REPRESENT THE HOME YOU ARE PURCHASING. ADDITIONALLY, PENNYWORTH HOMES INC. HEREBY RESERVES THE RIGHT TO SUBSTITUTE MATERIALS OF EQUIVALENT QUALITY AND/OR TECHNIQUES OF ASSEMBLY AND/OR CONSTRUCTION METHODS FROM THAT CONTAINED IN THESE PLANS OR SPECIFIED IN EXHIBIT "B" WHERE NECESSARY TO ACCOMMODATE DIFFERENCES IN LOCAL CODES, GEOGRAPHIC CUSTOMS, OPTION SELECTION AND AVAILABILITY OF MATERIALS. ALL MATERIALS (LUMBER, OR OTHER BUILDING SUPPLIES) DELIVERED TO JOBSITE WHICH ARE IN EXCESS OF THOSE REQUIRED TO CONSTRUCT THE HOUSE AS AGREED REMAIN THE PROPERTY OF PENNYWORTH HOMES INC.

NOTE: PENNYWORTH HOMES INC. RESERVES THE RIGHT TO ONLY MAKE CHANGES TO PLANS, REQUESTED BY BUYERS, THAT PENNYWORTH HOMES INC. DEEMS TO BE AESTHETICALLY, ARCHITECTURALLY, AND STRUCTURALLY SOUND.

THIS PLAN REFLECTS THE DESIGN AS PER BUYERS' FINAL APPROVED SIGNED PLANS DATED 5/30/2006. CHANGES MADE TO REPLICATE ENGINEERS NOTES AND CALCULATIONS.

CONSTRUCTION PLANS

SCALE: 1/4" = 1'-0"

DRAWN BY: BAA PLAN DATE: July 27, 2006 PAGE 9

JOB# 06-04-0050 OF 9



OUR SALES BROCHURES AND OTHER ADVERTISING LITERATURE ARE INTENDED TO GENERALLY REFLECT AND DEPICT THE STYLES AND QUALITY OF HOMES WE BUILD THROUGHOUT A PORTION OF THE UNITED STATES. OUR SALES MODELS ARE DESIGNED AND BUILT TO GENERALLY CONFORM WITH A VARIETY OF LOCAL CUSTOMS, PRACTICES, AND BUILDING CODES PREVALENT OR IN EFFECT IN THE IMMEDIATE AREA SURROUNDING THE LOCATION OF THOSE MODELS. THIS SET OF PLANS IS AN ACTUAL PART OF OUR CONTRACT WITH YOU AND, AS SUCH, IS INTENDED TO TAKE PRIORITY OVER ANYTHING IN CONFLICT WITH IT CONTAINED IN OUR ADVERTISING LITERATURE. OUR SALES MODELS AND EVEN OUR ORAL SALES PRESENTATION, NO CHANGE, MODIFICATION, OR REVISION OF THESE PRINTED PLANS SHALL BE BINDING ON THE PARTIES UNLESS SET FORTH ON THESE PLANS OR OTHERWISE REDUCED TO WRITING AND EXECUTED BY SAID PARTIES. PLEASE REVIEW THESE PLANS ALONG WITH "EXHIBIT B" OF YOUR CONTRACT CAREFULLY AND MAKE CERTAIN BEFORE YOU SIGN THEM THAT THEY ACCURATELY REPRESENT THE HOME YOU ARE PURCHASING. ADDITIONALLY, PENNYWORTH HOMES INC. HEREBY RESERVES THE RIGHT TO SUBSTITUTE MATERIALS OF EQUIVALENT QUALITY AND/OR TECHNIQUES OF ASSEMBLY AND/OR CONSTRUCTION METHODS FROM THAT CONTAINED IN THESE PLANS OR SPECIFIED IN EXHIBIT "B" WHERE NECESSARY TO ACCOMMODATE DIFFERENCES IN LOCAL CODES, GEOGRAPHIC CUSTOMS, OPTION SELECTION AND AVAILABILITY OF MATERIALS. ALL MATERIALS (LUMBER, OR OTHER BUILDING SUPPLIES) DELIVERED TO JOBSITE WHICH ARE IN EXCESS OF THOSE REQUIRED TO CONSTRUCT THE HOUSE AS AGREED REMAIN THE PROPERTY OF PENNYWORTH HOMES INC.

NOTE:  
PENNYWORTH HOMES INC. RESERVES THE RIGHT TO ONLY MAKE CHANGES TO PLANS, REQUESTED BY BUYERS, THAT PENNYWORTH HOMES INC. DEEMS TO BE AESTHETICALLY, ARCHITECTURALLY, AND STRUCTURALLY SOUND.

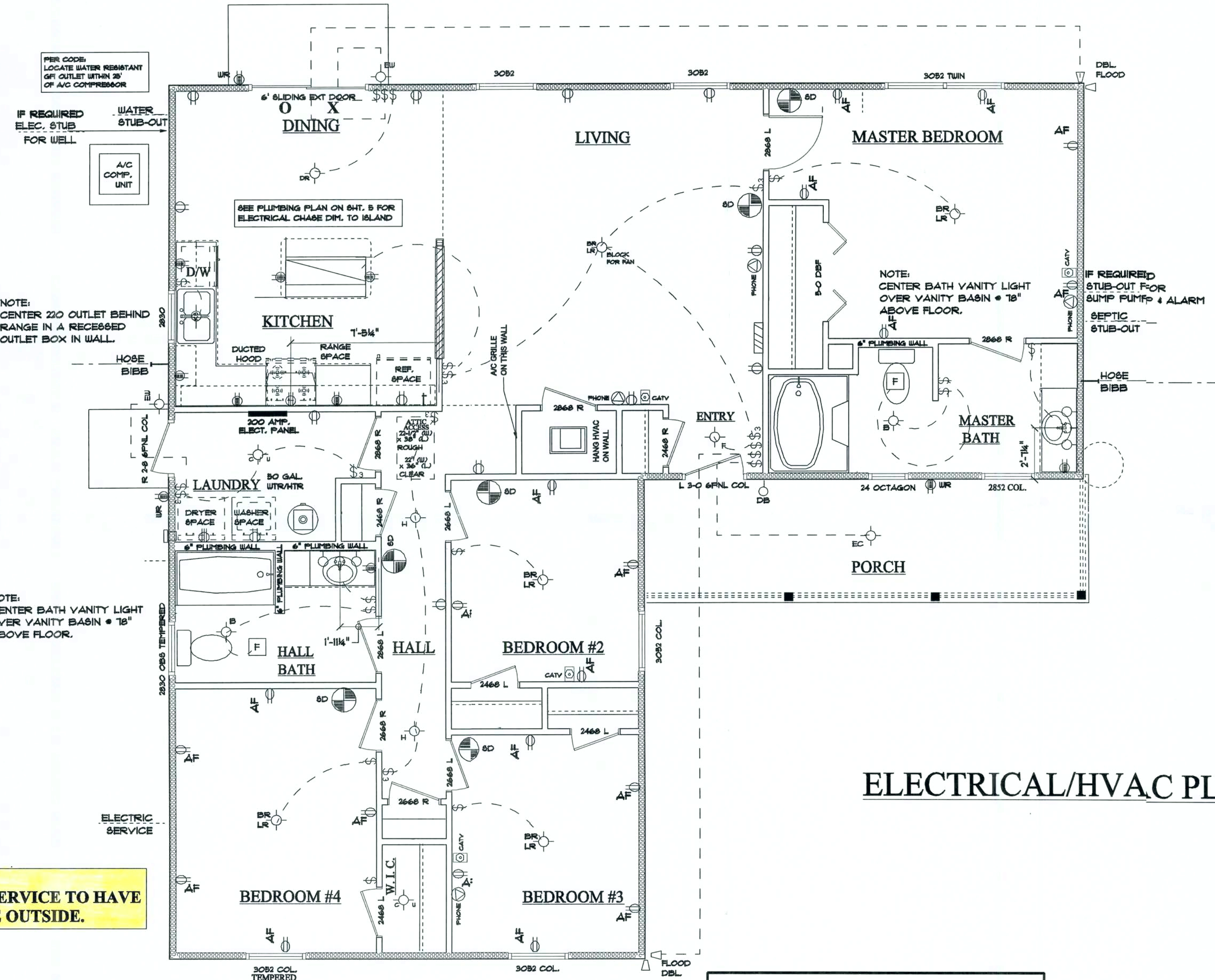
THIS PLAN REFLECTS THE DESIGN AS PER BUYERS' FINAL APPROVED SIGNED PLANS DATED 5/30/2006. CHANGES MADE TO REPLICATE ENGINEERS NOTES AND CALCULATIONS.

CONSTRUCTION PLANS

SCALE: 1/4" = 1'-0"

DRAWN BY: BAA PLAN DATE: December 04, 2006 PAGE 4

JOB# 06-04-0050 OF 9



## ELECTRICAL/HVAC PLAN

### NOTES:

ELECTRICAL/HVAC FIXTURES SHOWN ON THIS DRAWING ARE LOCATED IN ACCORDANCE WITH P.W.H. HOMES SPECIFICATIONS. DO NOT RELOCATE ANY FIXTURE WITHOUT PRIOR APPROVAL FROM THE CONSTRUCTION SUPERVISOR.

P.W.H. HOMES RESERVES THE RIGHT TO MAKE CHANGES TO THE ELECTRICAL LAYOUT TO MEET NECESSARY ELECTRICAL OR BUILDING CODES. CHANGES MAY ALSO BE MADE AT THE DISCRETION OF THE BUILDER OR ELECTRICIAN DUE TO HOUSE FRAMING OR ELECTRICAL INSTALLATION TECHNIQUES.

### ELECTRICAL SYMBOLS LEGEND

BR FAN	LIVING ROOM/ BEDROOM BLOCK FOR FAN	EC FAN	EXTERIOR CEILING	SW	SWITCH SINGLE POLE	WR	GFI WR	SD	CHIMES (7" ABOVE FLOOR)	CATV	CABLE T.V. JACK
BR FAN	BATH (OVER MIRROR)	EC FAN	HALL FIXTURE	SW	SWITCH THREE WAY	WR	VISO PLATE	SD	CHIMES BUTTON	EC	ELECTRICAL PANEL
BR FAN	BREAKFAST NOOK	EC FAN	EXTERIOR WALL	AF	ARC FAULT	WR	LARGE ROUND FLOURESCENT KITCHEN (36"X36")	SD	SMOKE DETECTOR	EC	RECESSED LIGHT
BR FAN	BATH (MAIN)	EC FAN	EXTERIOR FLOOD	OUT	OUTLET	WR	RECESSED LIGHT (TUB / SHOWER)	SD	BATH FAN	EC	HANGING LIGHT FIXTURE
BR FAN	CLOSET/ UTILITY FIXTURE	EC FAN	FOYER FIXTURE	OUT	SPLIT OUTLET	WR	RECESSED LIGHT (KITCHEN SINK)	SD	PHONE JACK	EC	EYEBALL LIGHT
BR FAN	DINING ROOM	EC FAN	GARAGE/KEYLESS/ATTIC	OUT	220V OUTLET-RECESSED BOX	WR	UTILITY FLOURESCENT	SD	WALL PHONE JACK	EC	CEILING FAN
BR FAN	KITCHEN SINK FIXTURE	EC FAN	LIVING ROOM/ BEDROOM FIXTURE	OUT	OUTLET GFI	WR	2-BULB FLOURESCENT CLOSET	SD	UTILITY FLOURESCENT	EC	
BR FAN		EC FAN		OUT	KEYLESS BLOCK FOR FAN	WR		SD	4-BULB FLOURESCENT KITCHEN	EC	
BR FAN		EC FAN		OUT	KEYLESS BLOCK FOR FAN	WR		SD		EC	

REV.#	REV. DATE	DRAWN BY	DISCRIPTION OF REVISION



## OF

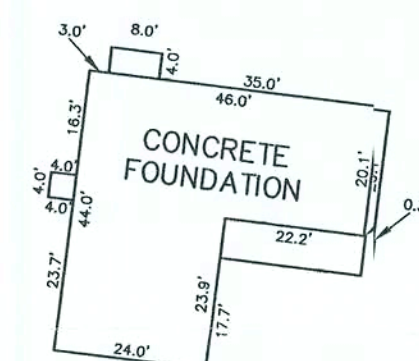
LOT 7

THE WEST 1/2 OF THE SOUTHEAST 1/4 OF THE NORTHWEST 1/4 OF THE SOUTHWEST 1/4 OF SECTION 13, TOWNSHIP 6 SOUTH, RANGE 16 EAST, COLUMBIA COUNTY, FLORIDA. THE SOUTH 30 FEET OF SAID LANDS BEING SUBJECT TO AN EASEMENT FOR INGRESS AND EGRESS.  
CONTAINING 5.01 ACRES MORE OR LESS.

1. BEARINGS ARE BASED ON THE EAST LINE OF LOT 4, OLD WIRE FOREST (UNRECORDED), BEING N 00°22'59" W.
2. SUBJECT PROPERTY LIES IN ZONE "X", AN AREA OUTSIDE OF THE 500-YEAR FLOOD PLAIN PER FLOOD INSURANCE RATE MAP COMMUNITY PLAN NO. 120070 00225 B. LAST REVISION DATE JANUARY 6, 1988. FLOOD ZONE LINES, IF ANY, ARE SCALED FROM FLOOD INSURANCE RATE MAPS, PROVIDED BY FEMA.
3. ONLY THOSE VISIBLE INTERIOR IMPROVEMENTS AND IMPROVEMENTS PERTINENT TO THE SUBJECT PROPERTY HAVE BEEN LOCATED AS SHOWN HEREON. EXCEPTION IS MADE HEREON TO UNDERGROUND FACILITIES AND OTHER IMPROVEMENTS NOT VISIBLE OR KNOWN AT DATE OF SURVEY.
4. THIS SURVEY WAS PREPARED WITHOUT THE BENEFIT OF AN ABSTRACT OR TITLE POLICY. THEREFORE, EXCEPTION IS MADE HEREIN REGARDING EASEMENTS, RESERVATIONS AND RESTRICTIONS OF RECORD NOT PROVIDED BY THE CLIENT.
5. CLOSURE EXCEEDS 1 : 10,000.
6. SCALE AND GRAPHIC LOCATION OF FENCES AND UTILITY POLES, IF ANY, MAY BE EXAGGERATED FOR CLARITY.

N 00°22'59" W 662.11' (M)  
N 00°22'59" W 661.46' (P)  
BASIS OF BEARINGS

DETAIL  
SCALE: 1" = 30'



0' 60' 120' 180'

SCALE: 1" = 60'

### LEGEND

○ DENOTES 5/8" IRON ROD & CAP SET (LB6685)  
 ● DENOTES IRON PIPE OR REBAR FOUND (112)  
 □ DENOTES 4"x4" CONCRETE MONUMENT SET (LB6685)  
 ■ DENOTES CONCRETE MONUMENT FOUND  
 ▨ DENOTES NAIL & DISK FOUND  
 ☒ DENOTES 4"x4" CONCRETE MONUMENT (PRM);  
 (LB6685) UNLESS OTHERWISE NOTED  
 x<sub>2</sub> — x DENOTES FENCE  
 E — E DENOTES OVERHEAD ELECTRIC  
 ○ — ○ DENOTES POWER POLE  
 — — — DENOTES GUY ANCHOR  
 [ ] CONCRETE  
 ± — MORE OR LESS  
 PFC — POINT OF CURVATURE  
 PTC — POINT OF TANGENCY  
 PPI — POINT OF INTERSECTION  
 PPRC — POINT OF REVERSE CURVATURE  
 PCC — POINT OF COMPOUND CURVATURE  
 R — RADIUS  
 TR — TANGENT  
 L<sub>A</sub> — ARC LENGTH  
 Δ — CENTRAL ANGLE  
 CCH — CHORD BEARING & DISTANCE  
 PFCP — PERMANENT CONTROL POINT  
 PRM — PERMANENT REFERENCE MONUMENT  
 FRW — RIGHT OF WAY  
 FDOT — FLORIDA DEPARTMENT OF TRANSPORTATION  
 X — GROUND SPOT ELEVATION  
 N — NORTH  
 E — EAST  
 S — SOUTH  
 W — WEST  
 C — CENTERLINE  
 (P) — PLAT  
 (D) — DEED  
 (C) — CALCULATED  
 (M) — MEASURED  
 OS — OFFSET  
 NO ID — NO IDENTIFICATION  
 FND — FOUND  
 CM — CONCRETE MONUMENT  
 IP — IRON PIPE  
 IPC — IRON PIPE & CAP  
 RB — REBAR  
 RBC — REBAR & CAP  
 IR — IRON ROD  
 IRC — IRON ROD & CAP  
 NL — NAIL  
 NL+D — NAIL & DISK  
 ORB — OFFICIAL RECORDS BOOK  
 PG — PAGE(S)  
 POC — POINT OF COMMENCEMENT  
 PDB — POINT OF BEGINNING  
 SEC — SECTION  
 TWP — TOWNSHIP  
 RNG — RANGE

SURVEY FOR: THOMAS and JEANNE MCGAUHEY  
THOMAS E. and KATHLEEN M. HURT  
BRANCH BANKING and TRUST HOME MORTGAGE  
TRANSCONTINENTAL TITLE  
FIRST AMERICAN TITLE INSURANCE COMPANY

1-19-07  
DATE OF CERTIFICATE  
01-15-06  
DATE OF FIELD SURVEY

SURVEY VALID ONLY OF FIELD SURVEY SHOWN HEREON. NOT VALID WITHOUT THE SIGNATURE AND THE ORIGINAL RAISED SEAL OF A FLORIDA LICENSED SURVEYOR AND MAPPER. FLORIDA CERTIFICATE OF AUTHORIZATION NO. 6685.

**Bailey Bishop & Lane, Inc.**  
P.O. Box 3717  
Lake City, FL 32056  
Ph. 386-752-5640  
Eng. Lic. 7362

P.O. Box 814  
Port St. Joe, FL 32424  
Ph. 850-227-9449  
Survey Lic. LB-00006

THOMAS and JEANNE  
McGAUHEY

REVISIONS:

JOB NUMBER:  
060131MCG

DRAWN BY:  
JD

FIELD BOOK  
178 : 31  
FFB

SHEET NO.

01