

904-712-3750
CHRIS@SABOENG.COM

S-

FIELD ALTERATION

DO NOT SCALE DIMENSIONS FROM THESE DRAWINGS. IF A DIMENSION IS UNCLEAR REFER TO THE ARCHITECT'S DRAWINGS OR

DETAILS

SHEET 2 OF 7

STRUCTURAL ENGINEERING FOR
THE PARNELL RESIDENCE

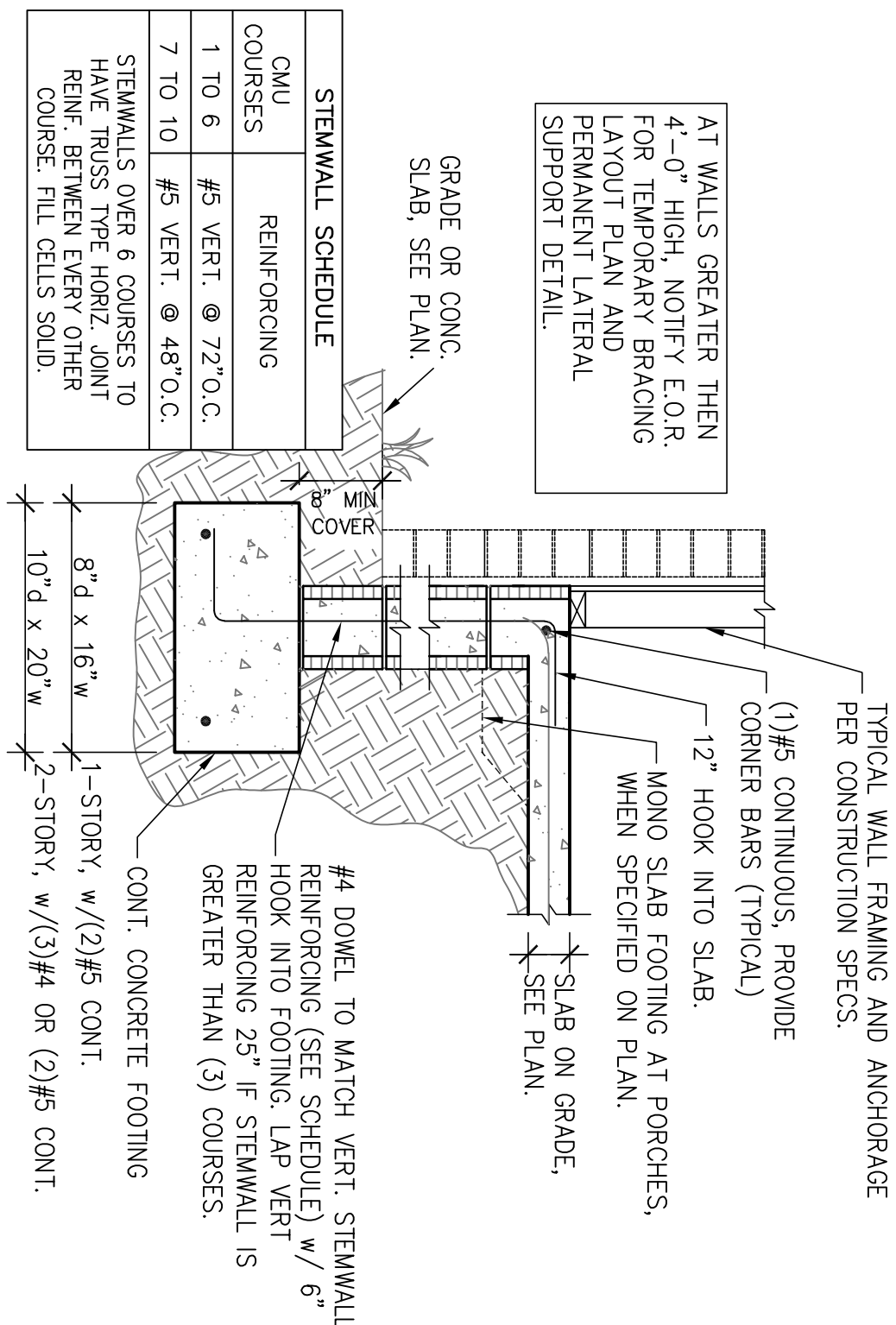
FIELD ALTERATION

CONSTRUCTION OF THIS PROJECT WAS REVIEWED BY THE STRUCTURAL ENGINEER PRIOR TO THE START OF CONSTRUCTION. ANY CHANGES TO THE ORIGINAL DESIGN SHALL BE REVIEWED AND APPROVED BY THE ENGINEER. FIELD ALTERATIONS SHALL BE REVIEWED AND APPROVED BY THE ENGINEER. ANY CHANGES TO THE ORIGINAL DESIGN SHALL BE REVIEWED AND APPROVED BY THE ENGINEER. ANY CHANGES TO THE ORIGINAL DESIGN SHALL BE REVIEWED AND APPROVED BY THE ENGINEER.

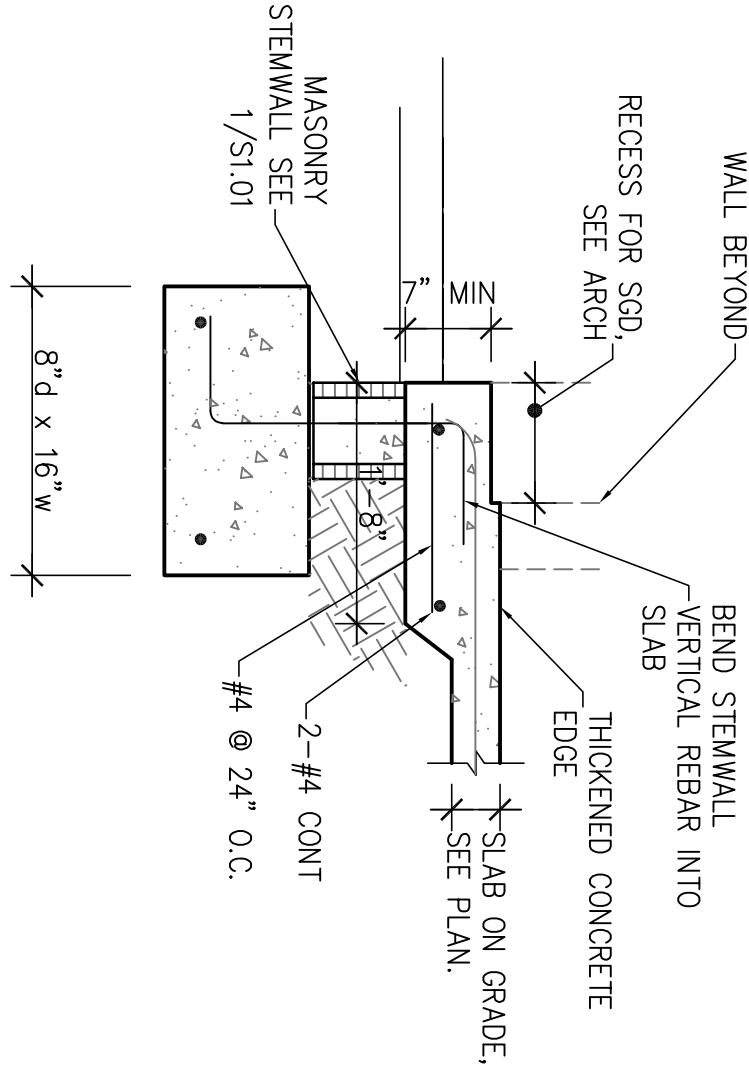
SCALING

ALL DIMENSIONS ARE TO THE CENTERLINE UNLESS NOTED OTHERWISE. DIMENSIONS ARE TO THE CENTERLINE UNLESS NOTED OTHERWISE. DIMENSIONS ARE TO THE CENTERLINE UNLESS NOTED OTHERWISE.

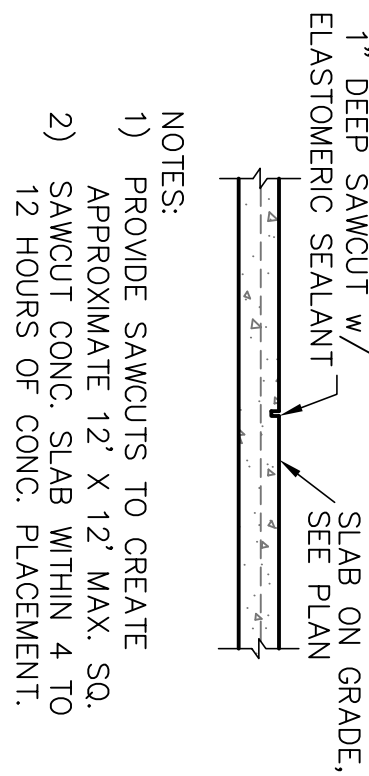
FOUNDATION
DETAILS



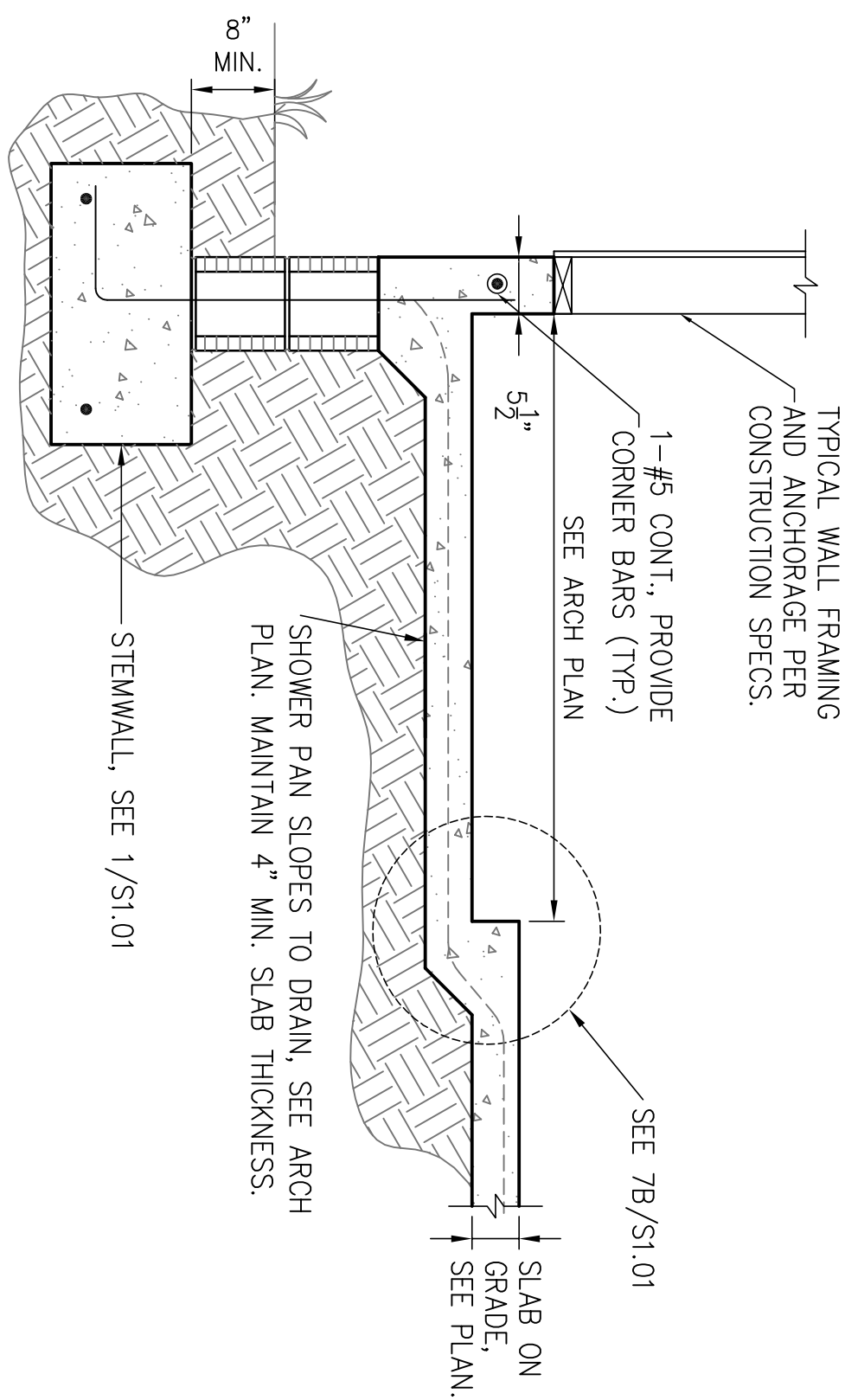
1 STEMWALL FOOTING
S1.01 SCALE: 3/4" = 1'-0"



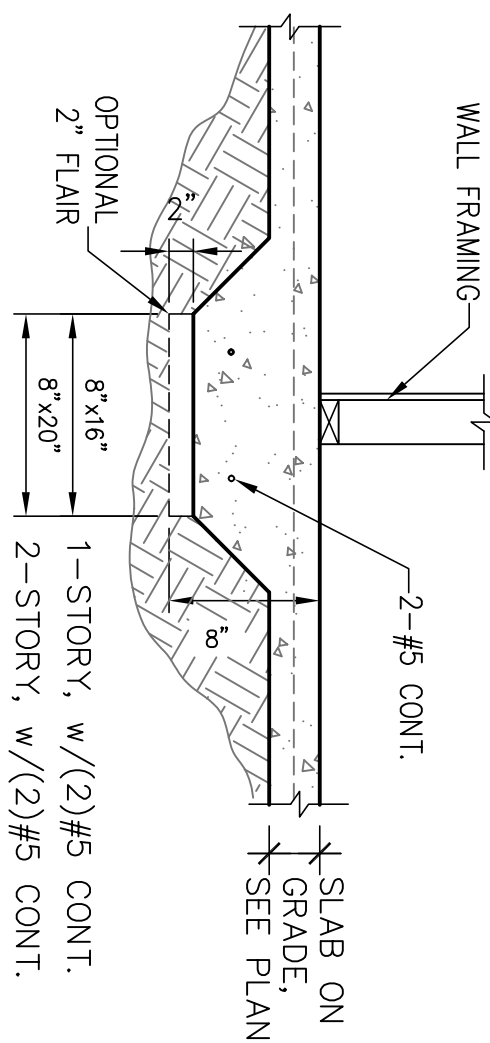
4 STEMWALL FOOTING AT SLIDER
S1.01 SCALE: 3/4" = 1'-0"



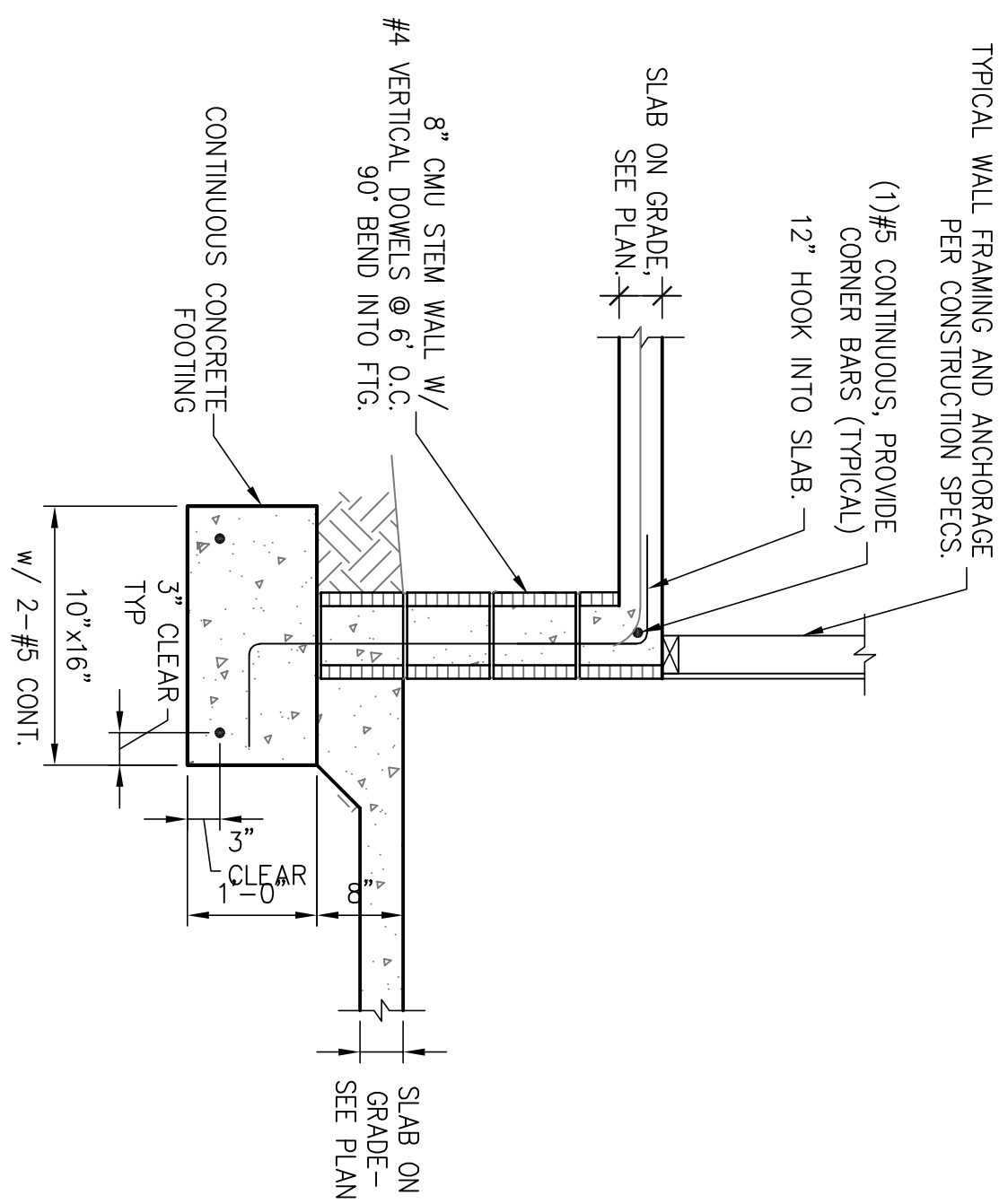
5 SAW CUT DETAIL
S1.01 SCALE: 3/4" = 1'-0"



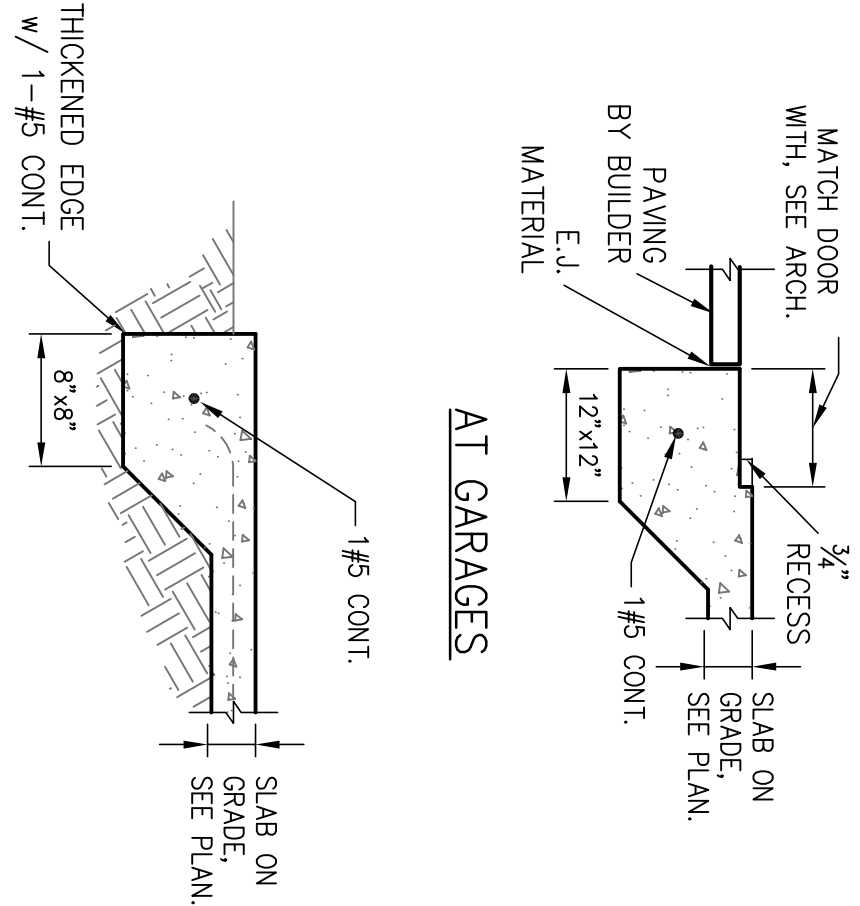
2 FOOTING w/ SHOWER RECESS
S1.01 SCALE: 3/4" = 1'-0"



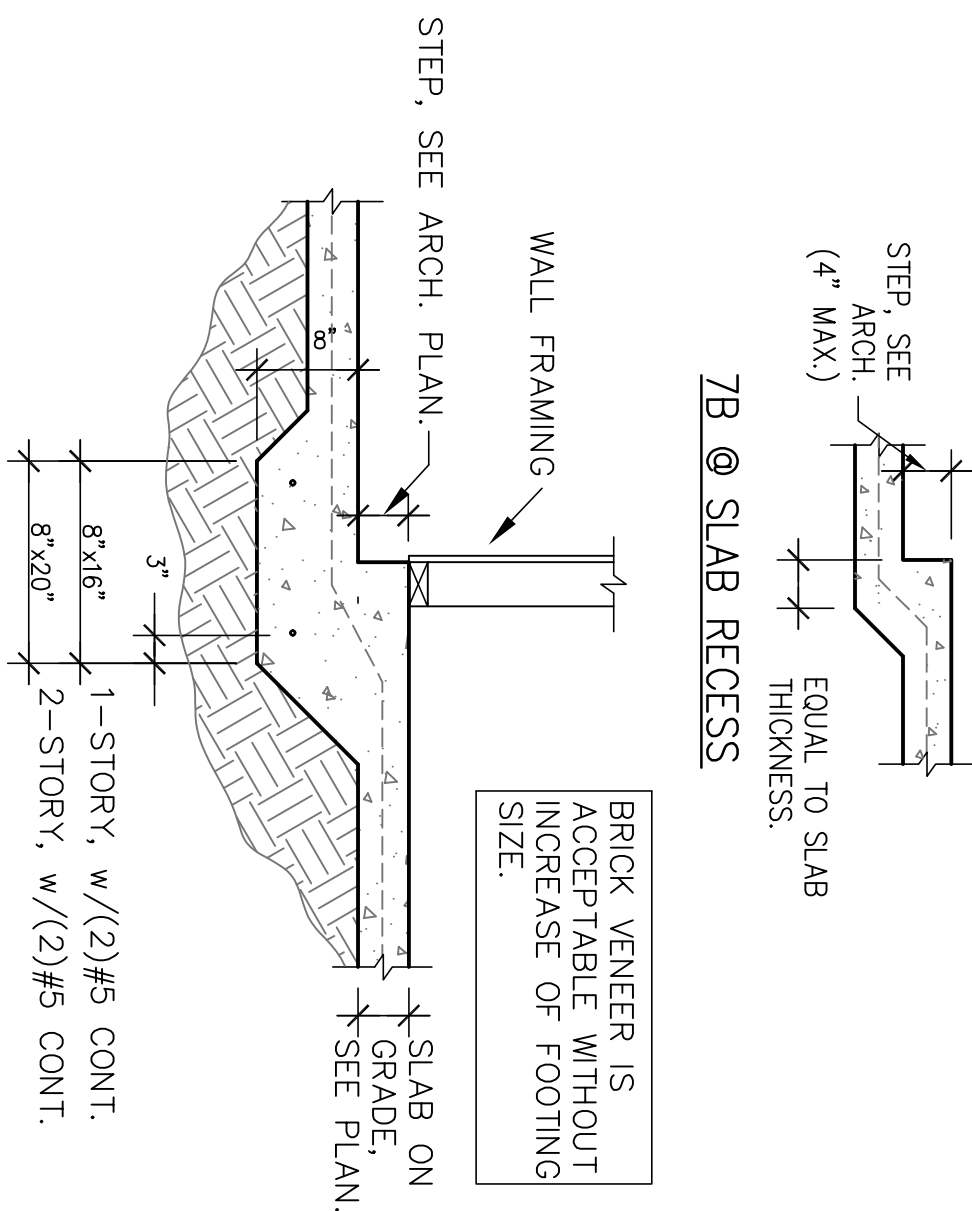
6 BEARING AT INTERIOR
S1.01 SCALE: 3/4" = 1'-0"



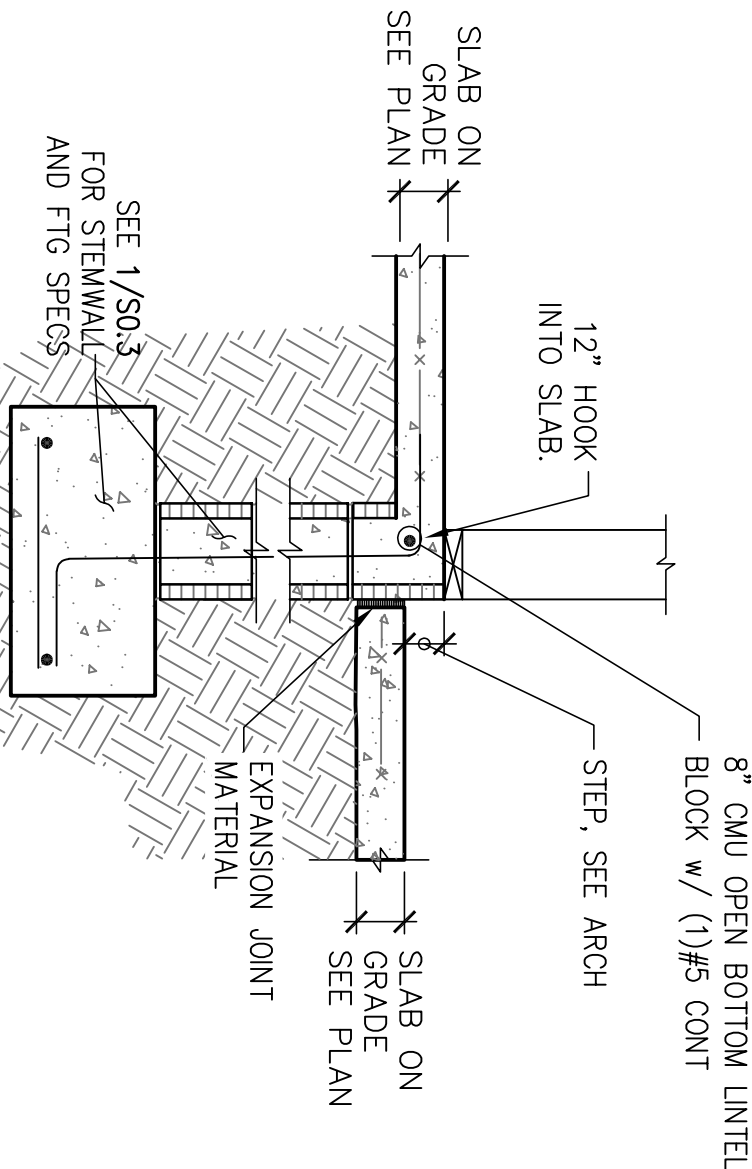
10 STEMWALL AT GARAGE
S1.01 SCALE: 3/4" = 1'-0"



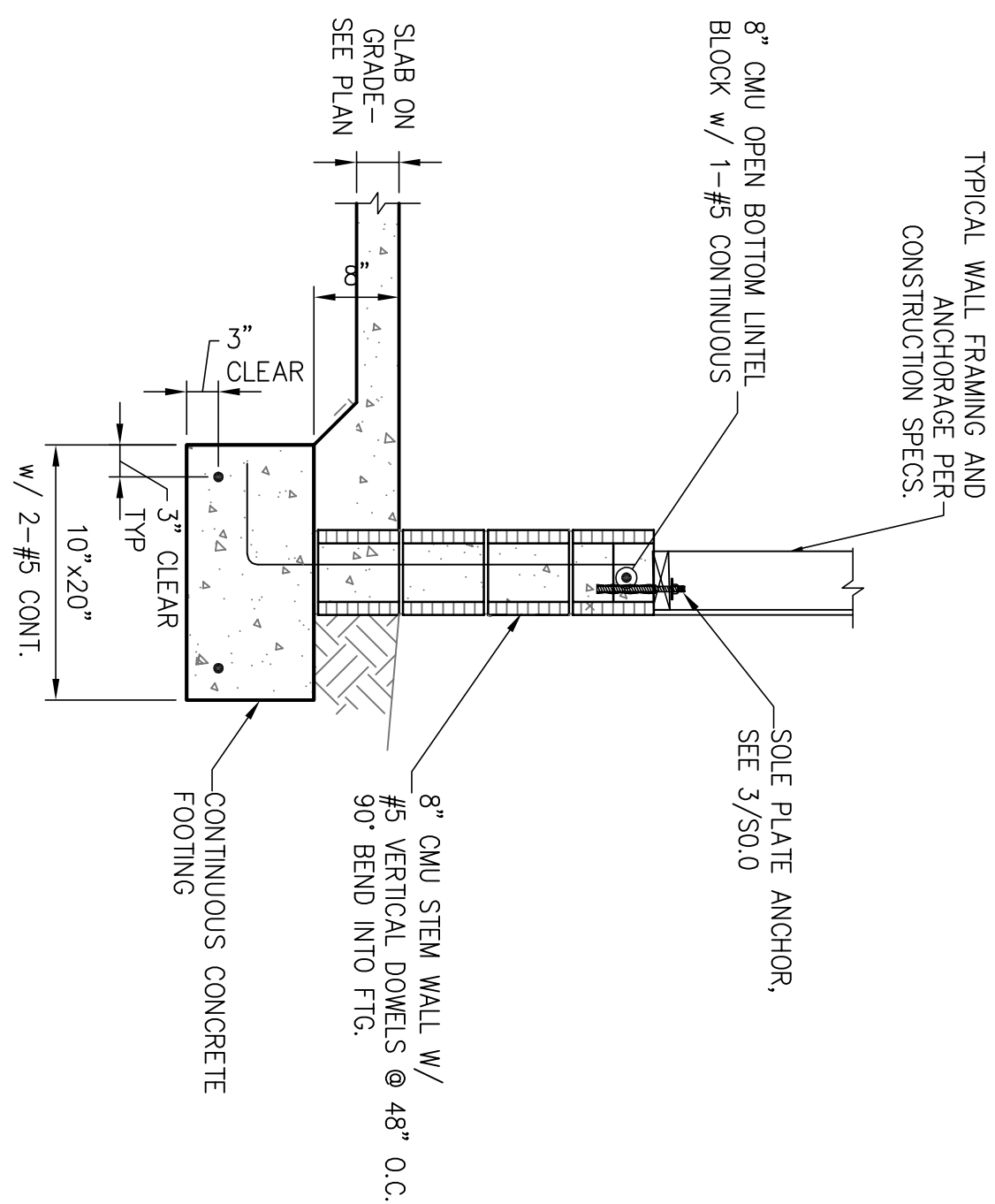
3 THICKENED SLAB
S1.01 SCALE: 3/4" = 1'-0"



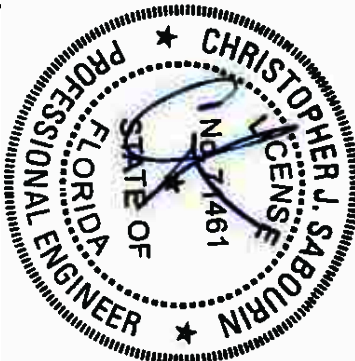
7 MONO. FOOTING AT STEP-DOWN
S1.01 SCALE: 3/4" = 1'-0"



8 STEP AT STEMWALL
S1.01 SCALE: 3/4" = 1'-0"



9 GARAGE STEM WALL
S1.01 SCALE: 3/4" = 1'-0"



06/07/22 Sabin
Christopher J. Sabo
FL #E71461

SABO
STRUCTURAL
ENGINEERING
CA#32529
235 9TH AVE N
JAX BEACH, FL 32250
904-712-5750
CHRIS@SABOENG.COM

PLAN NAME	B2/C
SSE NO.	22-0249

ISSUE	DATE
PERMIT	06/09/22
REVISIONS	DATE

STRUCTURAL ENGINEERING FOR THE PARNELL RESIDENCE

FIELD ALTERATION

CONTRACTOR SHALL VERIFY ALL FIELD ALTERATIONS PRIOR TO ANY CONSTRUCTION. ANY CHANGES TO THE ORIGINAL DESIGN SHALL BE SUBMITTED TO THE ENGINEER FOR REVIEW AND APPROVAL. THE ENGINEER SHALL BE NOTIFIED IMMEDIATELY OF ANY FIELD ALTERATIONS. THE ENGINEER SHALL BE RESPONSIBLE FOR VERIFYING THE ACCURACY OF ALL FIELD ALTERATIONS. THE ENGINEER SHALL BE RESPONSIBLE FOR VERIFYING THE ACCURACY OF ALL FIELD ALTERATIONS. THE ENGINEER SHALL BE RESPONSIBLE FOR VERIFYING THE ACCURACY OF ALL FIELD ALTERATIONS.

SCALING

ALL DIMENSIONS SHALL BE IN FEET AND INCHES. DIMENSIONS SHALL BE GIVEN TO THE NEAREST 1/8" OR 1/16" AS APPROPRIATE. DIMENSIONS SHALL BE GIVEN TO THE NEAREST 1/8" OR 1/16" AS APPROPRIATE. DIMENSIONS SHALL BE GIVEN TO THE NEAREST 1/8" OR 1/16" AS APPROPRIATE.

FIRST LEVEL WALL FRAMING PLAN

SHEET
S1.1
SHEET 5 OF 7

SYMBOLS LEGEND

	DESIGNATES GOS SHEARWALL. THE HIDDEN SHEARWALL SHALL BE SHOWN WITH DASHED LINES. SHEARWALLS SHALL BE COMMON @ 3" O.C. EDGE & 8" O.C. IN THE FIELD.
	DESIGNATES THE HEADER SIZE, NUMBER OF STUDS, AND STUDS NEEDED FOR SUPPORT HEADER.

ANCHOR LEGEND

	1/2" x 7" ANCHOR FULL HEIGHT THREADED ROD. SEE DETAIL 12/SO.1
	1/2" x 5" ANCHOR FULL HEIGHT THREADED ROD. SEE DETAIL 12/SO.1
	1/2" x 5" ANCHOR THREADED ROD TERMINATES AT FIRST FLOOR 10" PLATE. SEE DETAIL 12/SO.1
	1/2" x 5" ANCHOR THREADED ROD TERMINATES AT FIRST FLOOR 10" PLATE. SEE DETAIL 12/SO.1

	SIMPSON DT2Z SEE DETAIL 16/SO.1
	SIMPSON LTRB SEE DETAIL 16/SO.1

LOCATION	FOOTING HEIGHT	STUD SIZE & SPACING
EXTERIOR	9'-1"	2x4 SPF#2 @ 16" O.C.
EXTERIOR	10'-1"	2x6 SPF#2 @ 16" O.C. DE
EXTERIOR	10'-1" TO 11'-0"	2x6 SPF#2 @ 16" O.C.
INTERIOR	10'-1"	2x4 SPF#2 @ 16" O.C.
INTERIOR	12'-0"	2x6 SPF#2 @ 16" O.C. DE
INTERIOR	MAX	2x4 SPF#2 @ 12" O.C.

STUD NOTES
1) WALL STUDS SPECIFIED ON PLAN SUPERSEDE THIS TABLE
2) MINIMUM STUD SIZE AND SPACING ARE SHOWN. CONTRACTOR MAY INCREASE STUD SIZE AND SPACING AS LONG AS IT DOES NOT DECREASE STUD SIZE AND SPACING
3) SPF INDICATES SPURCE PINE TRL. SPF INDICATES SOUTHERN YELLOW PINE
4) USE SPF#2 FOR ALL TOP PLATES AND SOLE PLATES
5) FASTEN BOTTOM PLATE OF INTERIOR LOAD BEARING WALLS TO CONCRETE SLAB W/16d WAGON CUT NAILS @ 16" O.C. MINIMUM. SEE 3/SO.0 FOR ADDITIONAL ANCHORS AT SHEARWALLS

COMBINED USE PANEL NOTES

1. EXTERIOR WALL SHEATHING SHALL BE CONTINUOUS FROM BOTTOM PLATE TO UPPER MOST TOP PLATE. SEE DETAIL 1/SO.1 FOR SHEATHING SPICE LOCATIONS FOR MULTI STORY CONDITIONS
2. SEE SHEET 5/O.0 FOR WALL SHEATHING SPECIFICATIONS.
3. UPPER MOST TOP PLATE SUPPORTING ROOF MEMBERS SHALL BE STRAPPED AS SHOWN IN DETAIL 1/SO.0
4. INSTALL SOLE PLATE ANCHORS PER DETAIL 3/SO.0

GENERAL NOTES

1. SEE DETAIL 2/SO.0 FOR WALL FRAMING DETAIL. SEE WALL STUD SCHEDULE THIS SHEET FOR STUD SIZES AND SPACING. AT GIRDERS AND BEAMS, PROVIDE STUDS BELOW TO MATCH BEAM/GIRDER FACES
2. SEE SHEET 5/O.0 FOR ROOF AND FLOOR SHEATHING SPECIFICATIONS.
3. WHERE FRAMING MEMBERS CONSIST OF MULTIPLE PLIES (BEAMS, HEADERS, AND STUDS) FASTEN PLIES TOGETHER PER DETAIL 6/SO.0
4. INSTALL SOLE PLATE ANCHORS PER DETAIL 3/SO.0
5. AT SHEARWALLS, PROVIDE DIAPHRAGM ATTACHMENT PER DETAIL 5/SO.1
6. FOR ATTACHMENT OF EXTERIOR WALLS THAT TERMINATE BETWEEN TRUSSES, SEE 5A/SO.1
7. AT PORCHES, SEE DETAIL 2/SO.1 FOR FRAMING AND HOLD DOWNS

SOLE PLATE ANCHOR SPACING SCHD

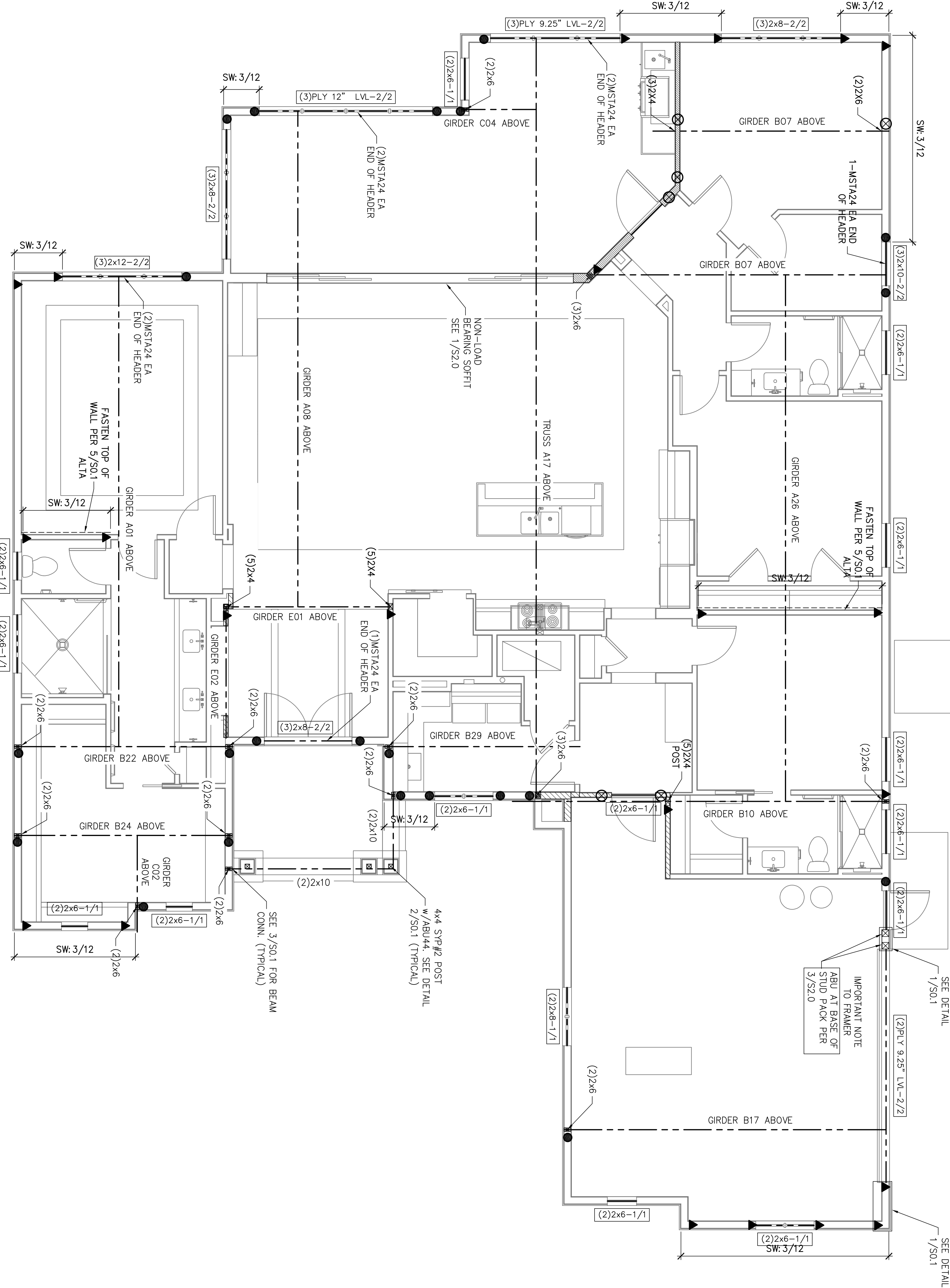
ALL EXTERIOR WALL UNLESS OTHER NOTED	4x7 O.C.
SHEARWALLS (SW 30x37/8")	24" O.C.
SOLE PLT @ #	WHEN NOTED ON PLAN SEE NOTE 2

1. INSTALL SOLE PLATE ANCHORS PER DETAIL 3/SO.0
2. ANCHOR SPACING SHALL BE AS NOTED. FOR EXAMPLE - SOLE PLT @ 36" = 36"

SOLE PLATE ANCHOR SPACING SCHD

FIRST LEVEL WALL FRAMING PLAN

SCALE 1/4" = 1'-0"



SYMBOLS LEGEND

HTS16	DESIGNATES UP/EFT CONNECTION
-------	------------------------------

FASTENING DETAILS

TRUSS

STUD DIRECTLY BELOW TRUSS

SDWC15600

TOP PLATE TO STUD SDWC15600

STUD DIRECTLY BELOW TRUSS

SDWC15600

TOP PLATE TO STUD SDWC15600

TRUSS TIE DOWN WITH SIMPSON SDWC

STUD DIRECTLY BELOW TRUSS

SDWC15600

TOP PLATE TO STUD SDWC15600

FASTENING DETAILS

TRUSS

STUD DIRECTLY BELOW TRUSS

SDWC15600

TOP PLATE TO STUD SDWC15600

TRUSS TIE DOWN WITH SIMPSON SDWC

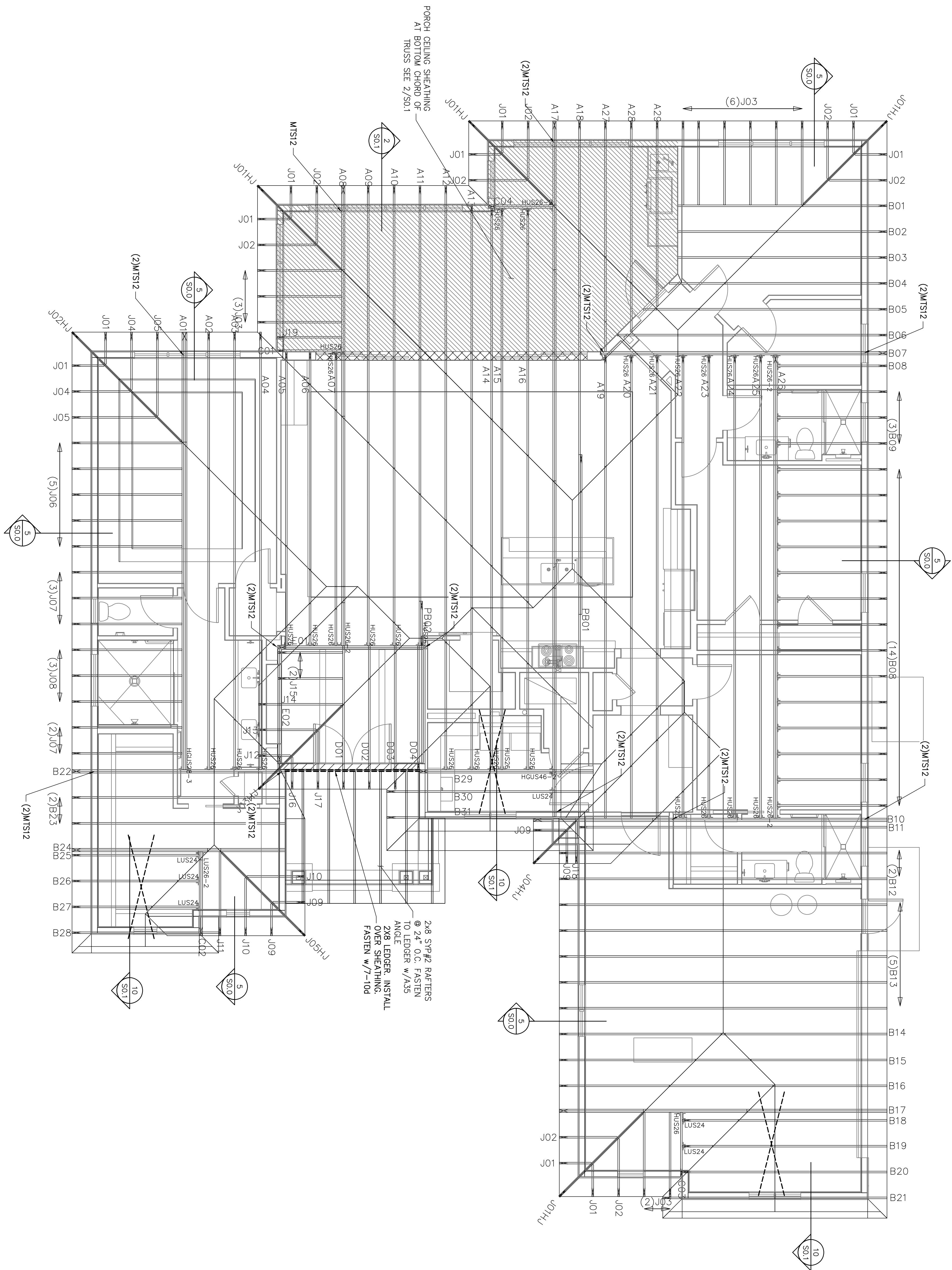
STUD DIRECTLY BELOW TRUSS

SDWC15600

TOP PLATE TO STUD SDWC15600

CHRIS TOPHER J. SABO
REGISTERED PROFESSIONAL ENGINEER
FLORIDA
No. 74461
06/09/22
SABO ENGINEERING
235 9TH AVE N
JAX BEACH, FL 32250
904-712-5790
CHRIS@SABOENG.COM

06/09/22
SABO ENGINEERING
235 9TH AVE N
JAX BEACH, FL 32250
904-712-5790
CHRIS@SABOENG.COM



- TRUSS / ROOF RAFTER NOTES: STRAPPING NOTES
- STRAP ROOF TRUSSES AND RAFTERS TO BEARING WITH 2-12D TOPNAILS & 1-SIMPSON SDWC15600 SCREW UNLESS OTHERWISE NOTED

ROOF TRUSS PLACEMENT PLAN

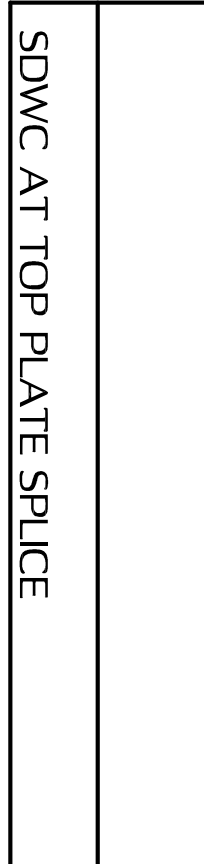
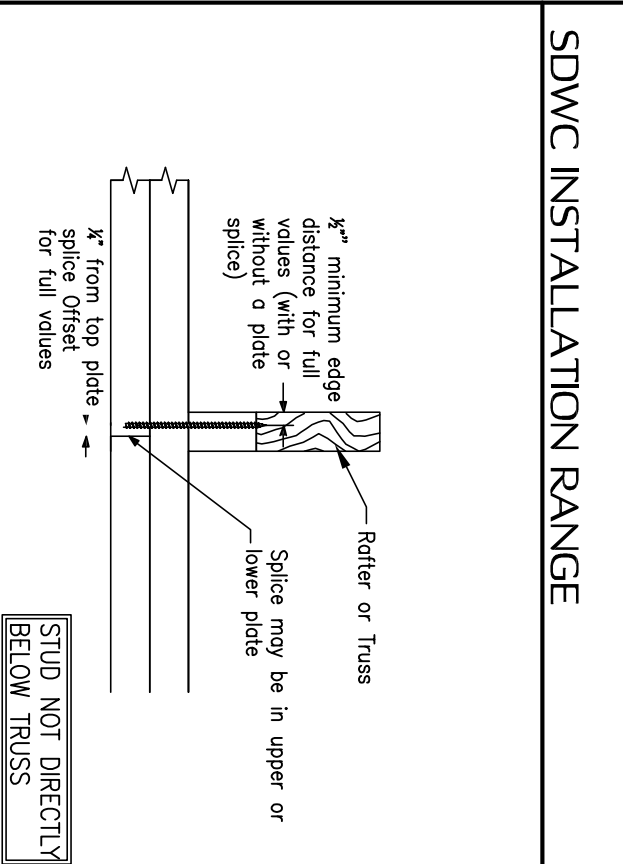
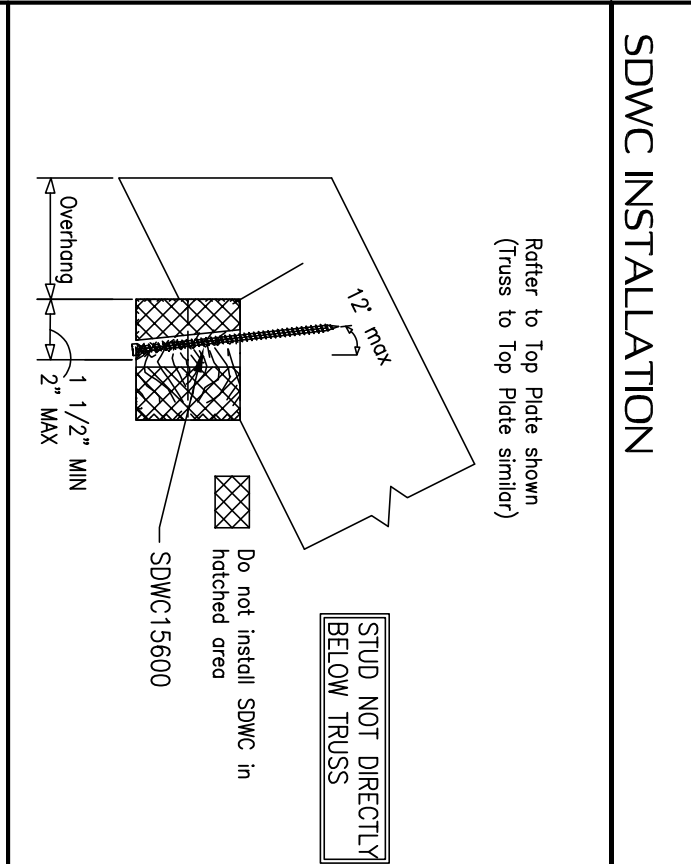
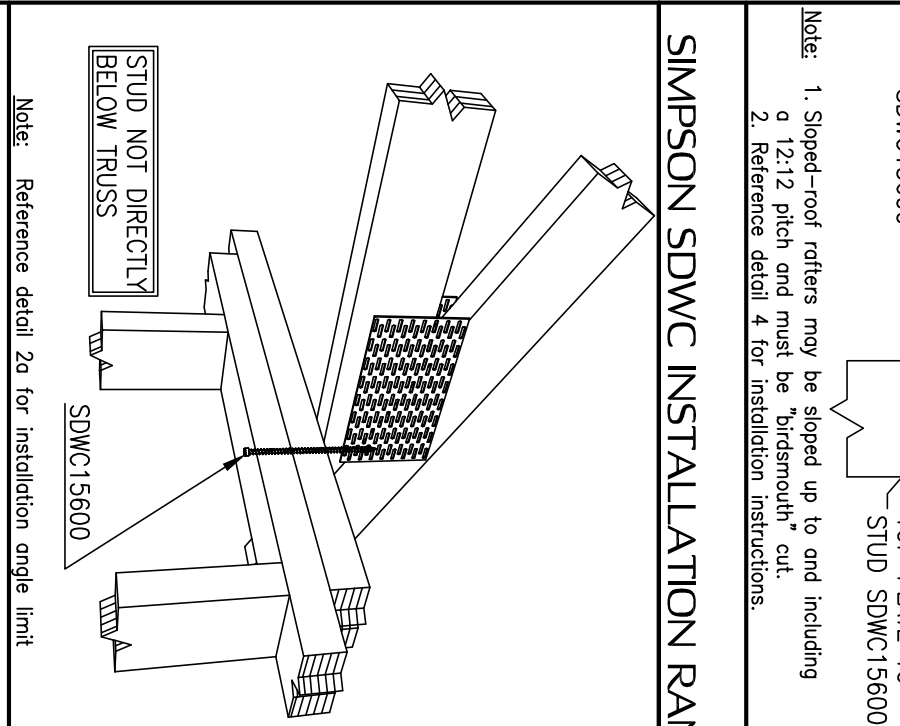
SCALE: 1/4" = 1'-0"

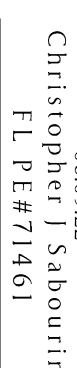
FIELD ALTERATION

SCALING

ROOF TRUSS PLACEMENT PLAN

ISSUE	DATE
PERMIT	06/09/22
REVISIONS	DATE





Christopher J Sabourin
FL PE#71461

SABO
STRUCTURAL
ENGINEERING
CA#32529
235 9TH AVE N
JAX BEACH, FL 32250
904-712-5750
CHRIS@SABOENG.COM

PLAN NAME
BZEC
SSE No.
22-0249

ISSUE	DATE
PERMIT	06.09.21
REVISIONS	DATE

STRUCTURAL ENGINEERING FOR THE PARNELL RESIDENCE

FIELD ALTERATION

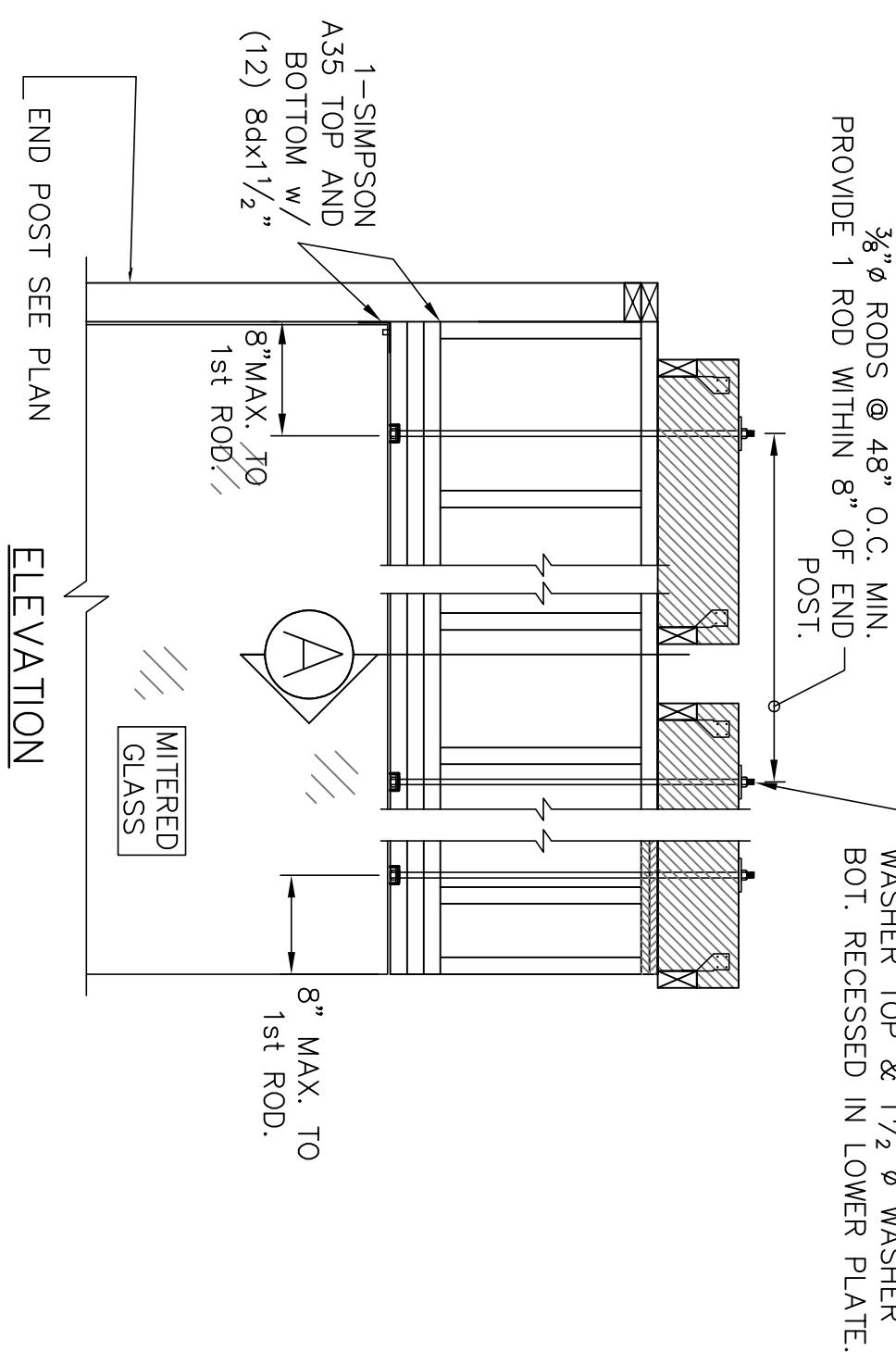
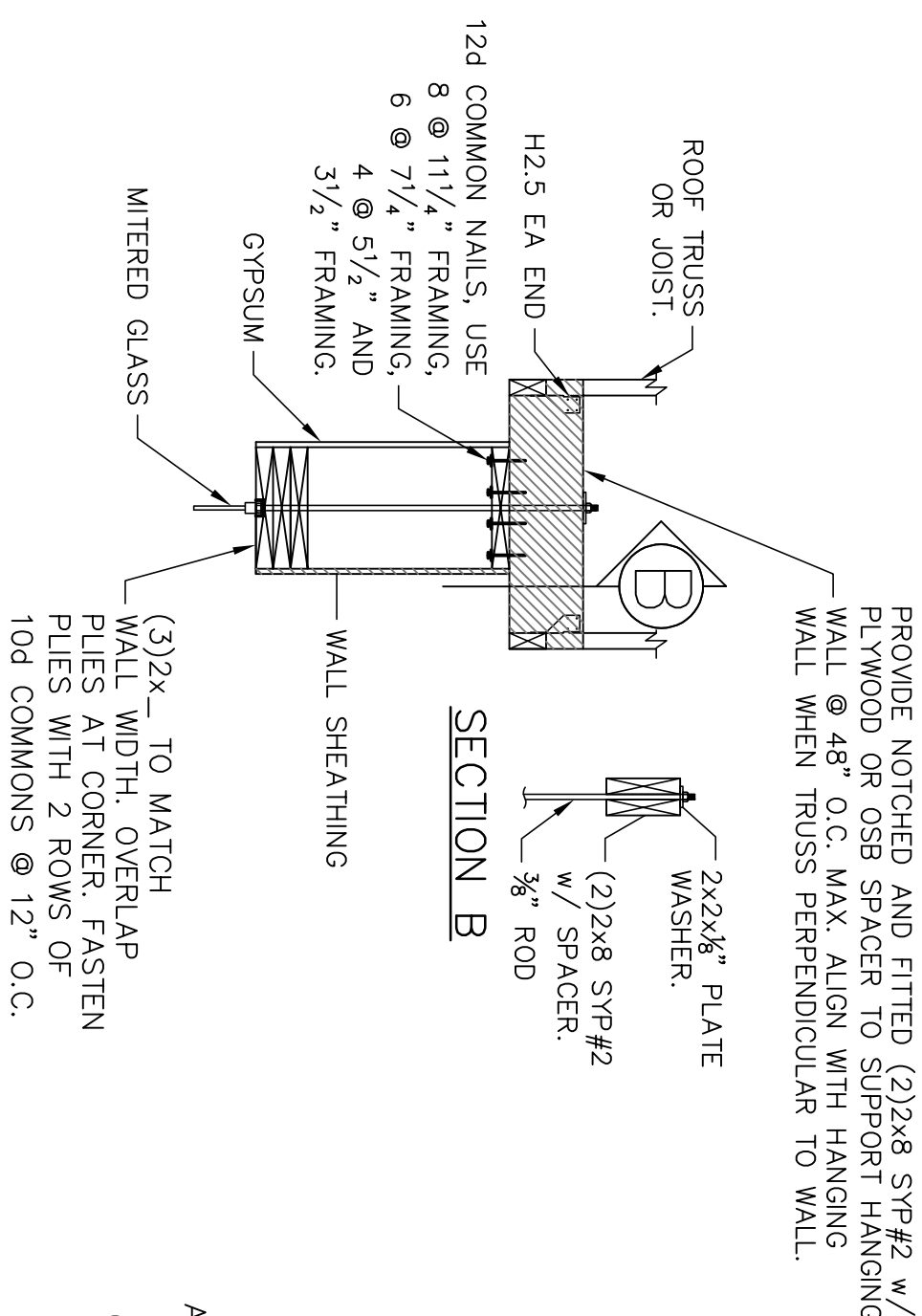
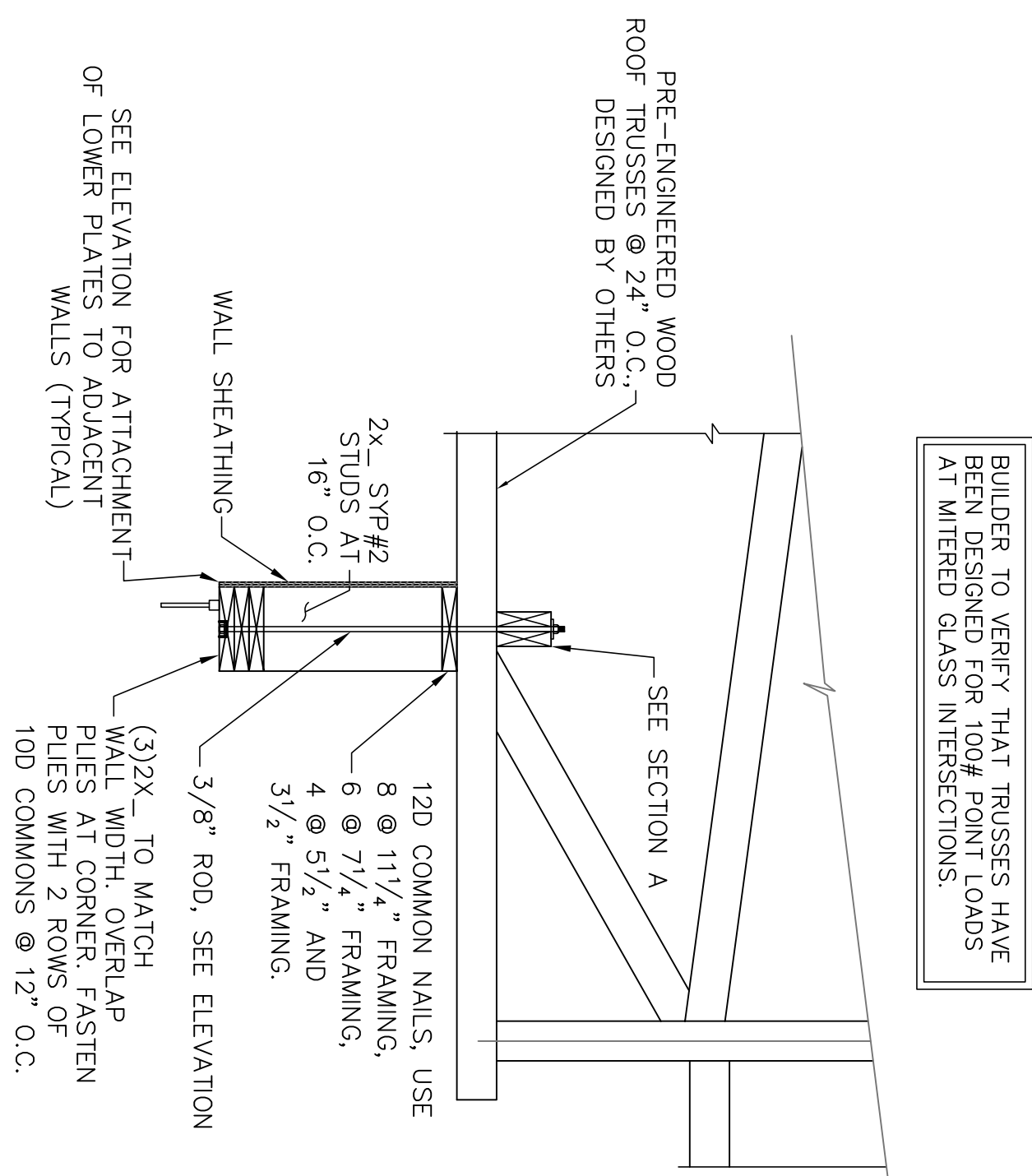
STRUCTURAL ENGINEERING PRIOR TO MAKING ANY STRUCTURAL FIELD MODIFICATIONS WHICH MAY VARY FROM THE INTENT OF THE ORIGINAL CONSTRUCTION DOCUMENTS, ANY FIELD ALTERATIONS MADE PRIOR TO BEING APPROVED BY CHRISTOPHER SABOURIN MAY RESULT IN ADDITIONAL ENGINEERING OR INSPECTION FEES.

SCALING
DO NOT SCALE DIMENSIONS FROM THESE DRAWINGS. IF A DIMENSION IS UNCLEAR REFER TO THE ARCHITECTURAL DRAWINGS OR CONTACT THE E.O.R.

MISC DETAILS

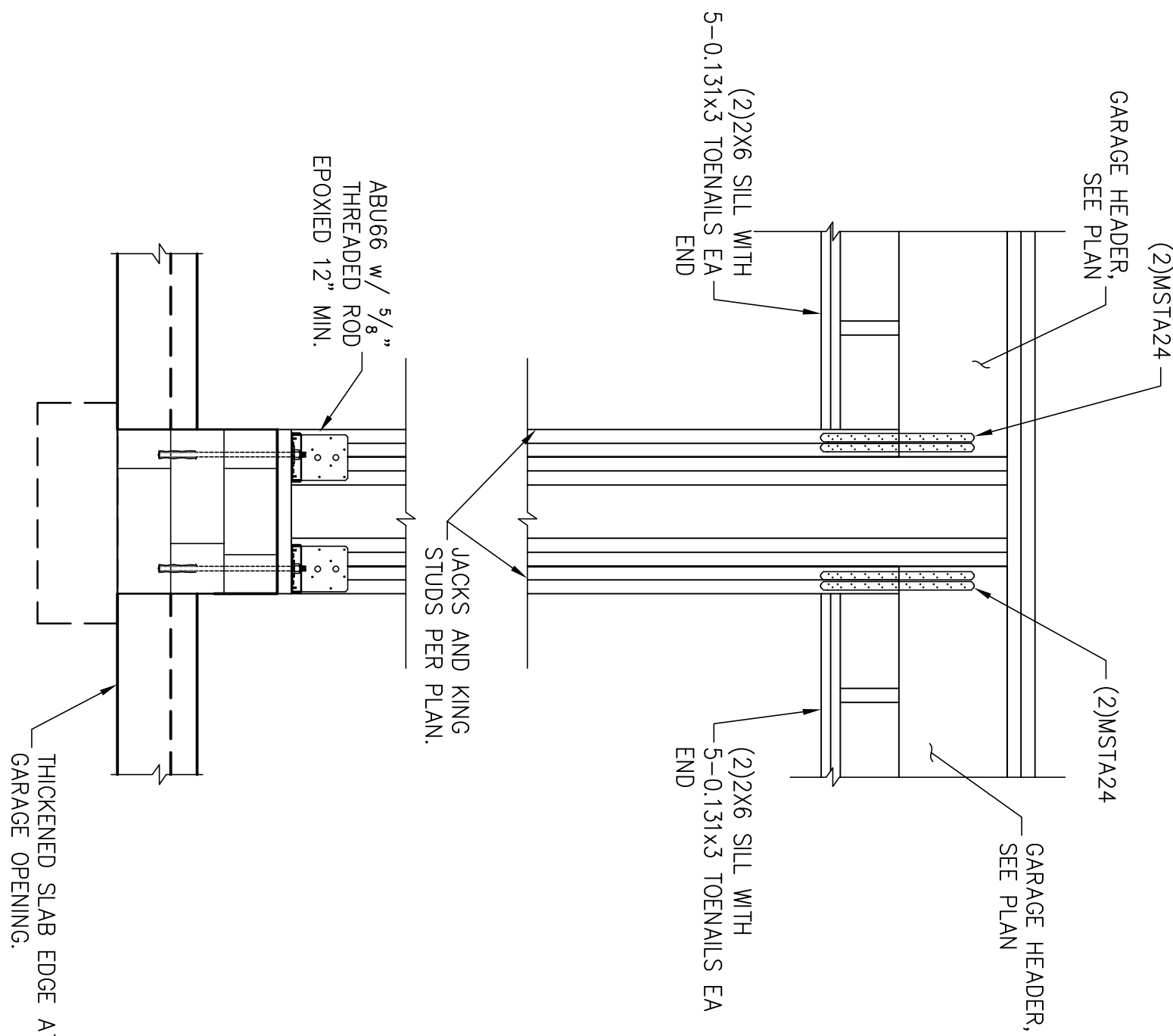
SHEET

S2.0
SHEET 7 OF 7



MITERED WINDOW HEAD FRAMING

S2.0 SCALE: N.T.S.



WHEN NOTED	2	GARAGE CENTER WALL FRAMING
	S2.0	

SCALE: 3/4" = 1'-0"

WHEN
NOTED