



**PRODUCT EVALUATION REPORT
PBR PANEL**

**FLORIDA BUILDING CODE 7TH EDITION (2020)
FLORIDA PRODUCT APPROVAL
FL 11819.5-R4
STRUCTURAL COMPONENTS
ROOF DECK**

Prepared For:
MBCI, part of the Cornerstone Building Brands family.
14031 West Hardy
Houston, TX 77064
Telephone: (844) 327-1748
Fax: (281) 445-8110

Prepared By:
Bala Sockalingam, Ph.D., P.E.
Florida Professional Engineer #62240
1216 N Lansing Ave., Suite C
Tulsa, OK 74106
Telephone: (918) 492-5992
FAX: (866) 366-1543

This report consists of
Evaluation Report (3 Pages including cover)
Installation Details (1 Page)

Report No. C2422-5
Date: 12.16.2020

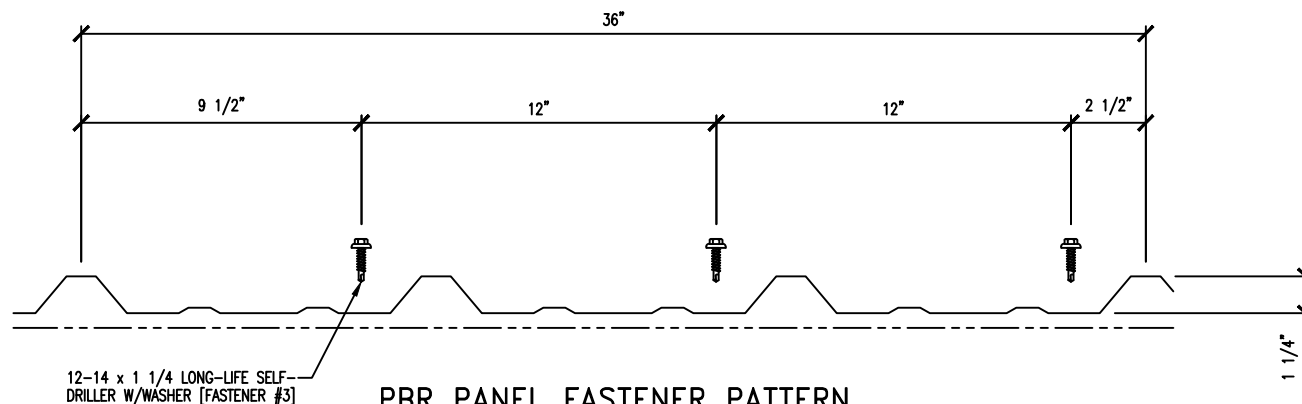


Manufacturer:	MBCI, part of the Cornerstone Building Brands family.
Manufacturing Locations:	Houston: 14031 West Hardy, Houston, TX 77064 Atlanta: 2280 Monier Ave., Lithia Springs, GA 30122 Adel: 1600 Rogers Road, Adel, GA 31620
Product Name:	PBR Panel
Panel Description:	36" wide coverage with (4) 1-1/4" high ribs
Materials:	Min. 29 ga., 80 ksi steel or min. 24 ga., 50 ksi steel. Galvanized coated steel (ASTM A653) or Galvalume coated steel (ASTM A792) or painted steel (ASTM A755). Corrosion resistant as per FBC 2020 Section 1507.4.3.
Support Description:	Min. 16 ga., 50 ksi steel section. (Must be designed by others)
Slope:	1/2:12 or greater in accordance with FBC 2020 Section 1507.4.2. Requires applied lap sealant for roof slopes less than 3:12.
Uplift Pressure: (Factor of Safety = 2)	29 ga.: -55 psf at panel span of 48 o.c. with one fastener at each rib. 26 ga.: -80 psf at panel span of 48 o.c. with one fastener at each rib. 24 ga.: -90 psf at panel span of 48 o.c. with one fastener at each rib. 22 ga.: -142.5 psf at panel span of 48 o.c. with two fasteners at each rib.
Panel Attachment:	1/4"-14 x 1-1/4" long self-drilling screws with washer. Fasteners are corrosion resistant as per FBC 2020 Section 1507.4.4.
At panel ends	7"-5"-7" o.c. across panel width
At intermediate	12" o.c. across panel width for 29, 26 and 24 ga. panels 7"-5"-7" o.c. across panel width for 22 ga. panels
Sidelap Attachment:	1/4"-14 x 7/8" long self-drilling screws with washer at 20" o.c. Fasteners are corrosion resistant as per FBC 2020 Section 1507.4.4.
Test Standards:	Roof assembly tested in accordance with ASTM E1592-01 'Test Method for Structural Performance of Sheet Metal Roof and Siding Systems by Uniform Static Air Pressure Difference' and FM 4471 Section 5.4 'Resistance to Foot Traffic'.
Test Equivalency:	The test procedure in ASTM E1592-01 comply with test procedure prescribed in ASTM E1592-05(2012).
Code Compliance:	The product described herein has demonstrated compliance with FBC 2020 Section 1507.4.

Product Limitations: Design wind loads shall be determined for each project in accordance with FBC 2020 Section 1609 or ASCE 7-16 using allowable stress design. The maximum panel span listed herein shall not be exceeded. The design pressure for reduced panel span may be computed using rational analysis prepared by a Florida Professional Engineer or based on MBCI load span table. This evaluation report is not applicable in High Velocity Hurricane Zone. Fire classification is not within scope of this Evaluation Report. Refer to FBC 2020 Section 1505 and current approved roofing materials directory or ASTM E108/UL790 report from an accredited laboratory for fire ratings of this product.

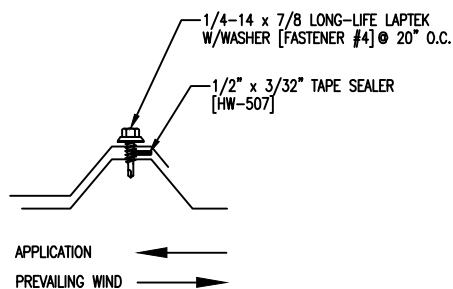
Supporting Documents: ASTM E1592 Test Reports
Force Engineering & Testing, Inc.
07-0045T-07 A, B, E, F, Reporting Date 4/3/2007

FM 4471 Test Report
Force Engineering & Testing, Inc.
07-0172T-17, Reporting Date 9/21/2017

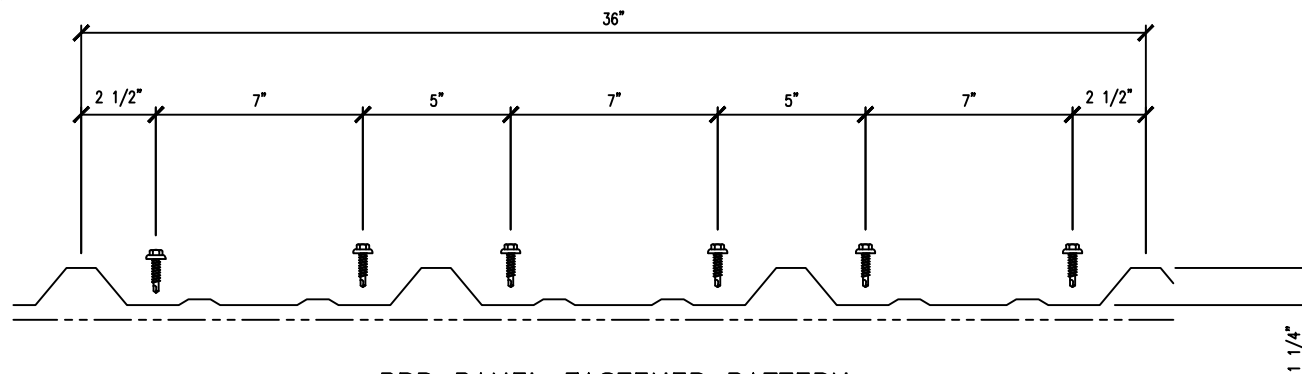


12-14 x 1 1/4 LONG-LIFE SELF-DRILLER W/WASHER [FASTENER #3]

PBR PANEL FASTENER PATTERN
(AT INTERMEDIATE SUPPORTS)



PBR PANEL SIDE LAP DETAIL



PBR PANEL FASTENER PATTERN
(AT PANEL ENDS)