



NICHOLAS  
PAUL  
GEISLER  
ARCHITECT  
N.C.A.R.B. Certified

1758 NW Brown Rd.  
Lake City, FL 32055  
386/755-6608

14 DECEMBER 2010

BUILDING OFFICIAL  
COLUMBIA COUNTY BUILDING DEPARTMENT  
COLUMBIA COUNTY COURTHOUSE ANNEX  
LAKE CITY, FLORIDA

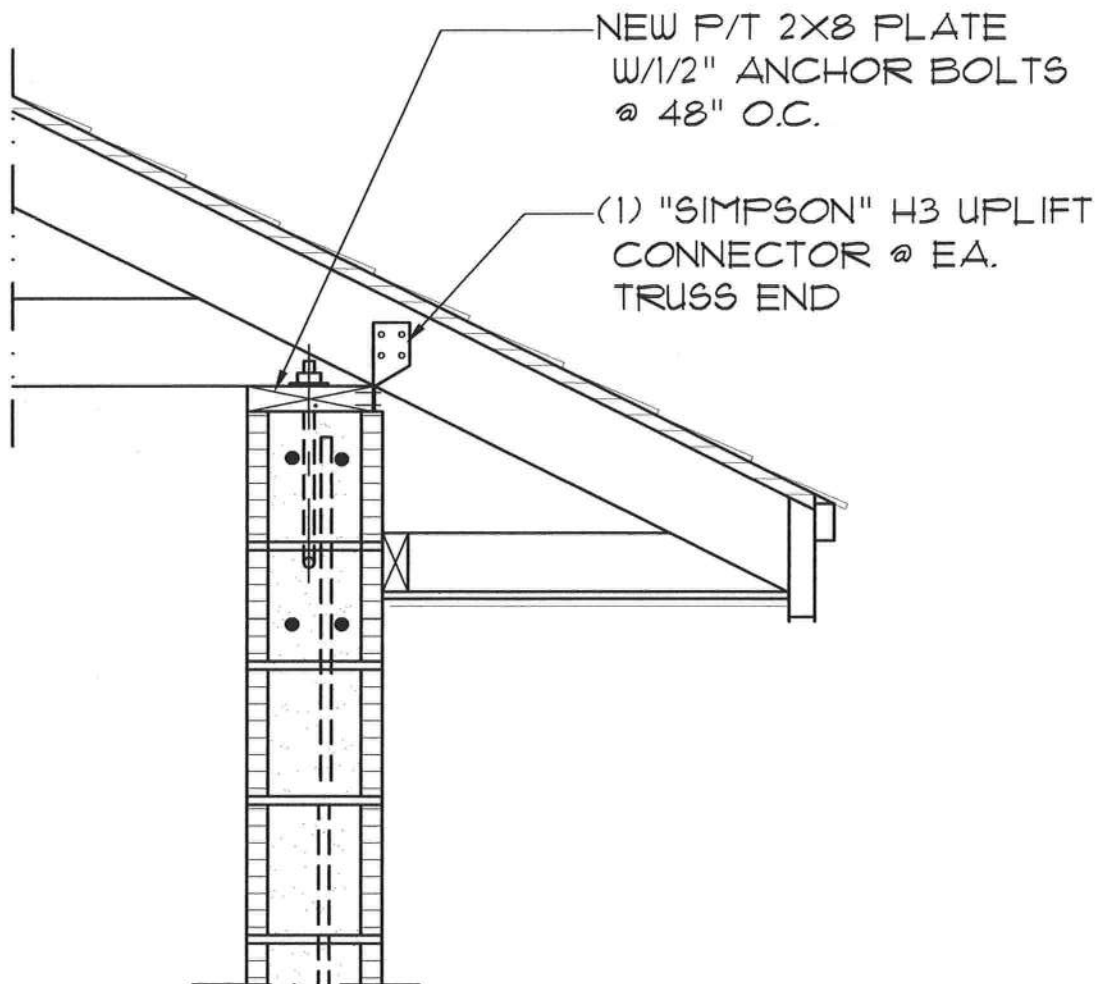
RE: RAMONA PARK CHURCH ADDITION  
PERMIT Nr.: 28972

DEAR SIR:

PLEASE BE ADVISED THAT THE "SIMPSON" METAL W/TSS GALVANIZED  
SADDLES @ EA. TRUSS TO WALL CONNECTION HAS BEEN REVISED  
TO INCLUDE A NEW P/T 2X8 TOP PLATE W/1/2" ANCHOR BOLTS AT  
48" O.C. AND (1) "SIMPSON" H3 UPLIFT CONNECTOR AT EA. TRUSS END.  
SEE ATTACHMENT "A" FOR DETAILS.

SHOULD YOU HAVE ANY QUESTIONS, PLEASE DO NOT HESITATE TO  
CALL FOR ANY ASSISTANCE.

YOURS TRULY,  
NICHOLAS PAUL GEISLER, ARCHITECT ARO007005



## New C.M.U. Wall Top Plate and Truss Attachment Detail

SCALE : NONE

*[Signature]*  
AR 7005 15 Dec 2010

ATTACHMENT 'A'