

ADVANCED FLOOR PRODUCTS CORPORATE ACCOUNT
DOLLAR GENERAL STORES WORK ORDER

National Account Number 2008-07

Revised 5/07/09

New Store Construction - Approximately 7352 Sq Feet of RetroPlate Floor Store

The Sales area and hall will be finished to a **High gloss level 3 shine.**

Definition of expected shine

High Gloss: Reflective shine in which, at a distance of 30', the reflectivity is clearly defined.

- 1) The sales area and hall are the only areas to Receive Polishing
- 2) The receiving area, offices and restrooms will be finished by the vendors GC with Silicone Acrylic Concrete sealer
- 3) Polyurea joint fill (Standard Gray) will be required.
- 4) Control joints installed per recommendation of structural engineer slab design per "Slab on Grade" notes on sheet S2.A and minimum performance requirements. The exact placement of control joints shall be in accordance with the site specific recommendation of the Registered Professional Structural Engineer as part of the slab design. Control joints shall be placed per the Engineer's recommendation to limit cracking based on the site specific structural slab design. The minimum spacing layout is shown below.

Projects will be completed using only Advanced Floor Products products

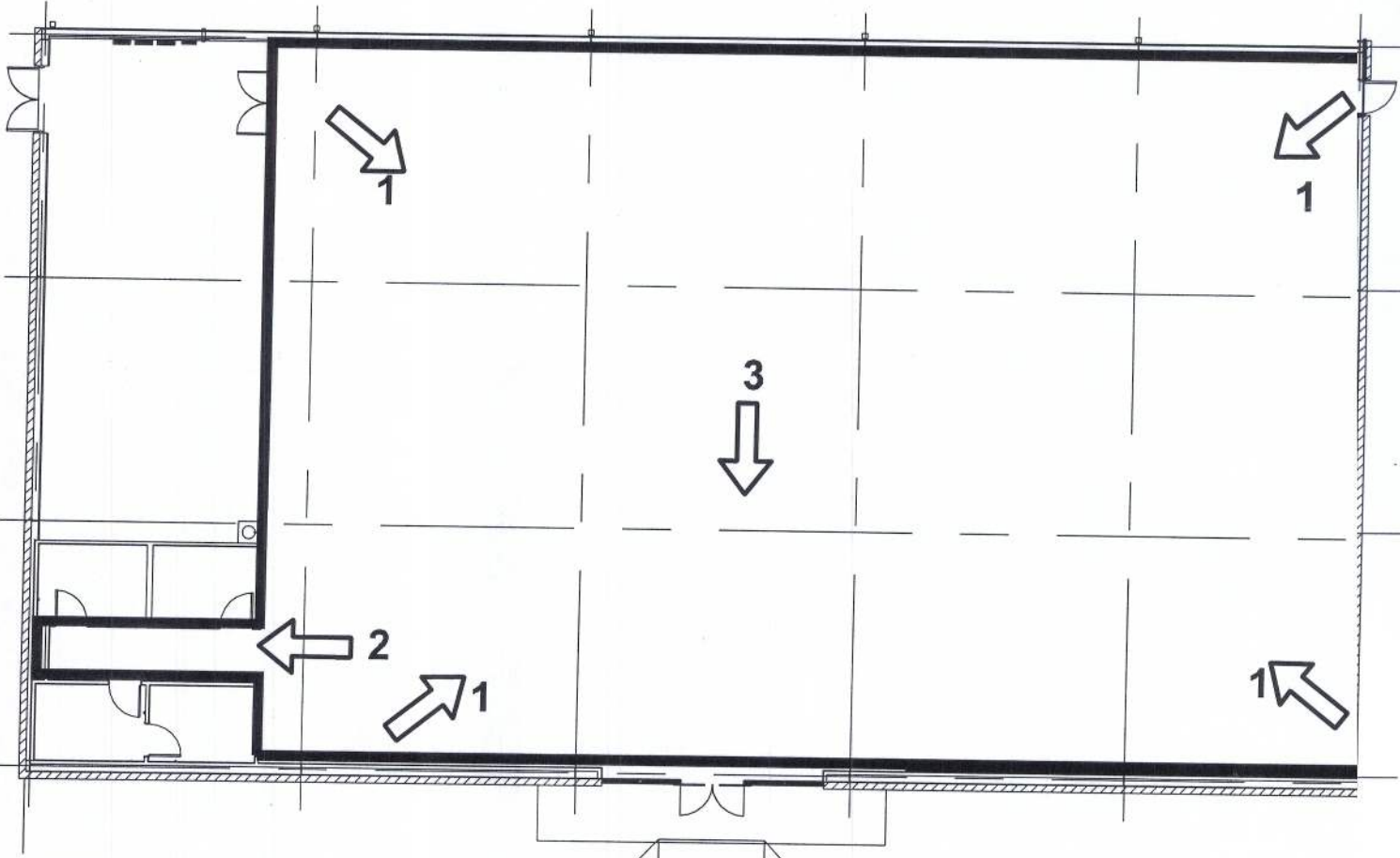
Product Requirements

- 1) RetroPlate 99 (no substitute densifier) 55 Gals per store.
- 2) RetroGuard 2-5 Gallon pails
- 3) Ameripolish Edge Tint (Part A&B) (Midnight Black)
- 4) Standard Poly Urea Gray joint fill (Applicators choice)
- 5) Diamonds purchased in sets to equip the particular machine. Grinded:
 - a) 40, 50 or 80 metal diamonds
 - b) 100/120, 200/220, 400, 800 resin diamonds
 - c) 800, 1500 and 3000 grit Twister pad is to be used to burnish.

All work will be completed per this work order.

Qualifications:

- 1) All applicators of the RetroPlate System must have the work experience and be certified by Advanced Floor Products of Springville, Utah.
- 2) Applicator must possess a letter of Certification from Advanced Floor Products 1203 W, Spring Creek Place, Springville, UT 84663.
 - a) The Applicator must have satisfactorily installed RetroPlate in a minimum of 5 projects of at least 6,000 sq feet.
 - b) The Certified person in the company must be present on the job during all phases of the installation.
 - c) Applicator will provide the recommended grinding machines and Advanced Floor Products Diamonds
- 3) EQUIPMENT:
 - a) Minimum number of machines need for the projects (2-32" Planetary)
 - b) Applicators will provide the electrical generators as necessary for their equipment.



REQUIRED PHOTOS:

The following layout shows the required photos to be taken at completion.
(Make sure the overhead lights are on for your photos.)

1. From each corner of the sales area, facing the opposite corner.
2. Hall, one picture from each end of the hall).
3. Standing 10' from the entrance facing the entrance.

SCOPE OF WORK

The following RetroPlate process will be used as a guide for RetroPlate process and is the Manufacturers application recommendation. Keep in mind that the applicator will finish the floor to a nice level 3 high gloss shine. **Applicators will alter the steps as necessary to achieve the required level 3 high gloss shine.** (See definition of shine)

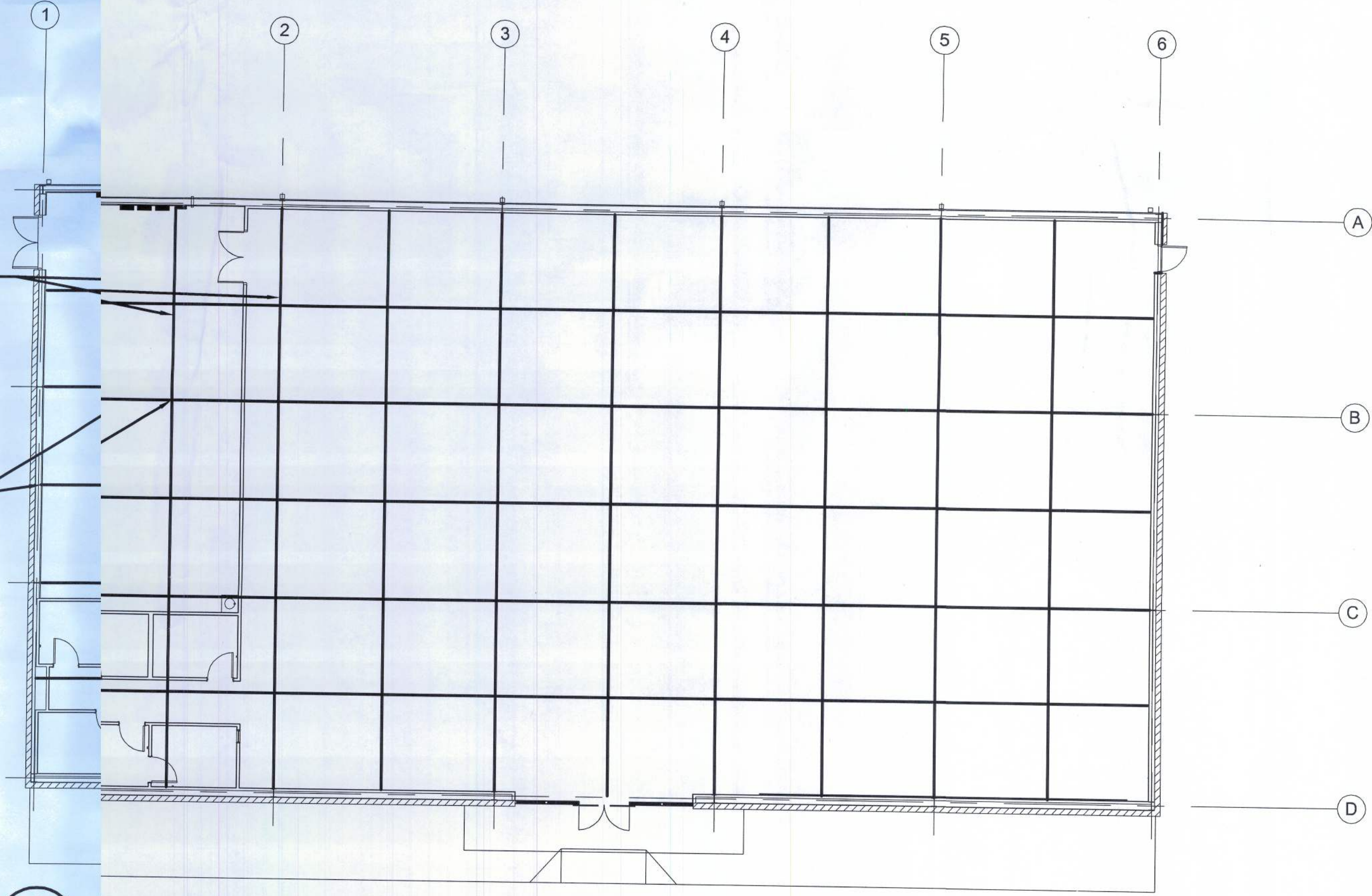
- 1) Start the Grind using 40, 50 or 80 grit Metal pad depending on the need. (Multiple passes will be required for each step) Make sure that the previous "Scratch Pattern" is taken out before proceeding.
- 2) Clean the floor.
- 3) Grind floor using 100/120 grit pad.
- 4) Clean the floor
- 5) Grind the floor with a 200/220 grit pad.
- 6) Clean floor
- 7) Apply RetroPlate 99 to the surface at 200 sq ft per gallon, scrubbing product in into floor and allowing product to soak until turning slick. If it becomes sticky, dampen the sticky areas with water and scrub in, leaving the product on the floor for 60 minutes.
- 8) Clean up excessive RetroPlate 99. Let the floor dry.
- 9) Continue the polishing process using 400 and 800 Grit pads. (800/1500/3000 Grit Twister pad, multiple passes, to finish.)
- 10) Ameripolish Edge Tint (Midnight Black) will be applied around the perimeter of the sales floor and hall extending out 4 inches.
- 11) Edge tint will be applied using a Paasche sprayer at 40psi.
- 12) Edge tint will be applied with a cut off line under the door edge at the receiving, office and restroom entrances.
- 13) Chase, clean and fill all control joints with Standard Gray polyurea joint fill.
- 14) Apply RetroGuard sealer to the entire sales floor and hall surface at a rate of 1200-1500 ft per gallon.

FLOORS WILL BE FINISHED TO A MINIMUM LEVEL 3 HIGH GLOSS SHINE

- 1) High Gloss: Reflective shine in which, at a distance of 30', the reflectivity is clearly defined.
- 2) Sample photos attached of required results

Minimum control joint layout:
Left to right at column lines
and centered in between
as shown

Minimum control joint layout:
Front to back divided into 5
equal bays and centered as
shown



CONCRETE FLOOR CONDITIONS:

- 1) Sealing, Hardening and Polishing of Concrete Surface.
 - a) Concrete must be in place a minimum of 28 days or as directed by the manufacturer before application can begin.
 - b) Concrete Floor will be finished to a minimum FF of 35 +/- 5 and FL of 30 +/- 5.
 - c) Only a certified applicator shall apply RetroPlate 99. Applicable procedures must be followed as recommended by the product manufacturer and as required to match approved test sample.
 - d) Polish to the required level 3 high gloss shine.

WORKMANSHIP AND CLEANING

- 1) The premises shall be kept clean and free of debris at all times.
- 2) Remove spatter from adjoining surfaces.
- 3) Remove debris from jobsite. Dispose of materials in separate, closed containers in accordance with local regulations.
- 4) Upon completion of the installation of the Retroplate system, the Applicator will meet with the Supervisor of Construction and /or the Dollar General Construction Manager. They will walk through and will sign off that the work is satisfactory.
- 5) Upon completion email completion photos with store location, address and date completed to:
 - a) corporateaccounts@retroplatesystem.com

(See below for required photos)

Questions regarding this work order procedure: contact Curtis Turnball 888-942-3144 at Corporate Accounts.

NICHOLAS GEISLER ARCHITECT
1758 NW Brown Road
Lake City, FL 32055
N.C.A.R.B. Certified
DATE: 11/16/2010
CDMM: AR0007005

CONCEPT CONSTRUCTION
License#: CGC151491
ph: 386-755-8887
fx: 386-755-1919
295 NW Commons Loop
Suite 115-323
Lake City, FL 32055
www.conceptconstruction.net

DOLLAR GENERAL
LAKE CITY, FLORIDA
COUNTY RD 247, LAKE CITY, FL
STORE # 12851
2010 PROTOTYPE - PLAN "C" 9,100

DOLLAR GENERAL
LAKE CITY, FLORIDA
COUNTY RD 247, LAKE CITY, FL
STORE # 12851
2010 PROTOTYPE - PLAN "C" 9,100

DATE 30 MAR 2010
Design JFB 06/10/10
Revisions JFB 1/20/10
SHEET NUMBER

S3.C

RETROPLATE WORK ORDER