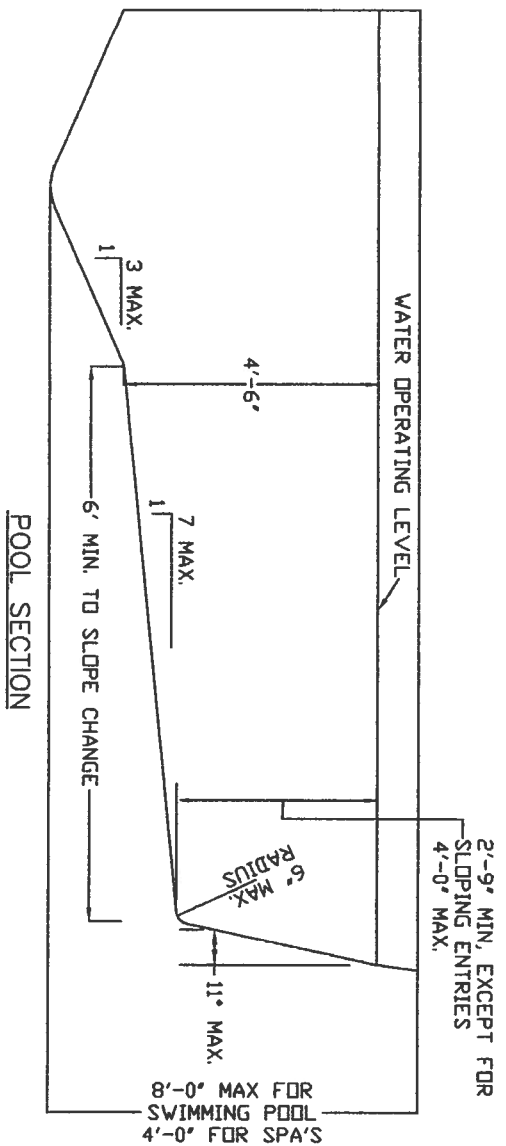
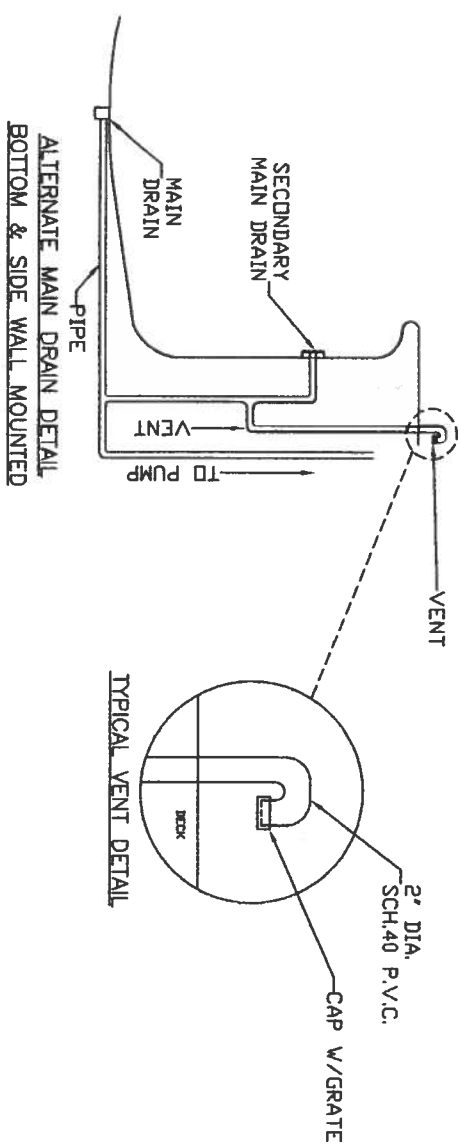


# GENERAL DESIGN REQUIREMENTS

DESIGN DIMENSIONING SHALL COMPLY WITH SPECIFICATIONS IN NSPI 5 AND NSPI 3. BASED ON THAT POOL TYPE. SEE NSPI FOR DIVING WATER ENVELOPES. SLIDES SHALL MEET THE MANUFACTURE'S INSTALLATION REQUIREMENTS. ENTRY/EXIT: REQUIRED AT THE SHALLOW END AND DEEP END IF OVER 5 FEET DEEP. ACCEPTABLE ARE STAIRS (10" MIN. TREAD WITH 240 SQUARE INCH MIN. AREA, 12" MAX. RISER WITH INTERMEDIATE TREADS AND RISERS UNIFORM). LADDERS, UNDERWATER SEATS, AND SWIM OUTFITS (MAX. 20" BELOW WATER). CIRCULATION SYSTEMS, COMPONENTS AND EQUIPMENT SHALL COMPLY WITH NSF 50. FILTERS: THE MAXIMUM TURNOVER RATE IS 12 HOURS OR LESS WITH MATCHING COMPONENTS. FILTERS SHALL HAVE AN AIR RELEASE AND PRESSURE GAGE. PUMPS 3 HP AND LESS SHALL MEET ANSI/UL1081, CORROSION RESISTANT WITH STRAINER AND MEET THE REQUIRED FLOW. SURFACE SKIMMERS SHALL MEET NSF 50 AND THERE SHALL BE ONE FOR EVERY 800 SQUARE FEET OF SURFACE AREA. RETURN INLETS SHALL BE A MINIMUM OF ONE FOR EVERY 600 SQUARE FEET. THE CONSTRUCTION AND REINFORCEMENT SHOWN HERE ON MAY BE USED FOR ALL POOL SHAPES INCLUDING THOSE WITH CONCAVE AND CONVEX WALLS UP TO 8' DEEP AND SPAS UP TO 4' DEEP. HEATERS SHALL MEET ANSI-21.56 OR UL 1261 OR UL559 DISINFECTANT EQUIPMENT SHALL COMPLY WITH NSF 50. PRESSURE TEST PIPING AT 15 PSI FOR 30 MINUTES OR MEET LOCAL CODE IF GREATER.



# SPECIAL SPA REQUIREMENTS:

MAXIMUM WATER DEPTH 4', MAXIMUM SEAT DEPTH 28", MAX. FLOOR SLOPE 1:12. STEPS: MIN. TREAD 10" X 12", 7" MIN. RISER, 12" MAX. RISER EXCEPT THE BOTTOM STEP MAY BE 14" IF IT IS THE SEAT. INTERMEDIATE TREADS AND RISERS TO BE UNIFORM. IF THE SPA IS OPERATED INTERMITTENTLY IT SHALL TURN A ONE HOUR TURNOVER. IF CONTINUOUS, A SIX HOUR TURN OVER. MAXIMUM TEMPERATURE 104 DEGREES. MEET ANSI/NSPI ARTICLE XVII, SAFETY INSTRUCTION/SAFETY SIGNS. PRESSURE TEST PIPING AT 25 PSI FOR 30 MINUTES OR MEET LOCAL CODE IF GREATER.

# ELECTRICAL REQUIREMENTS

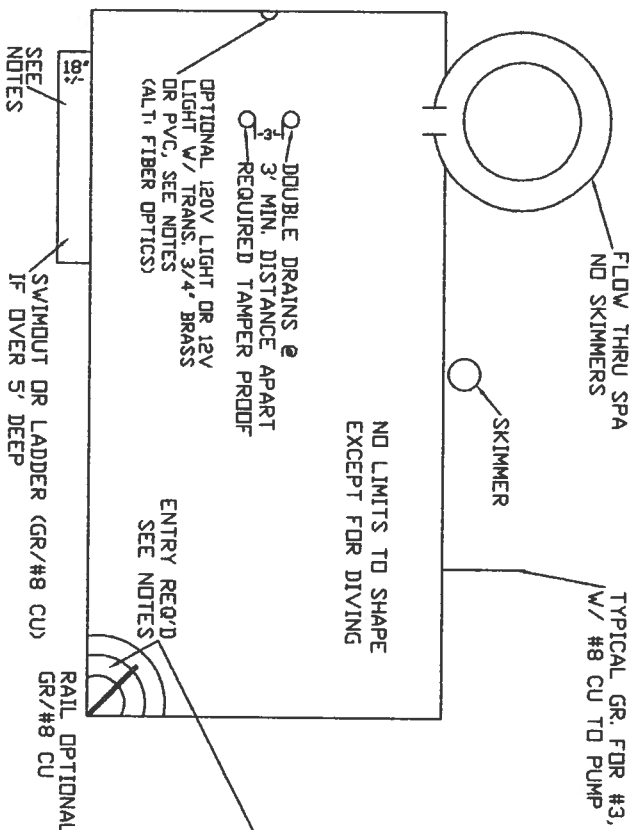
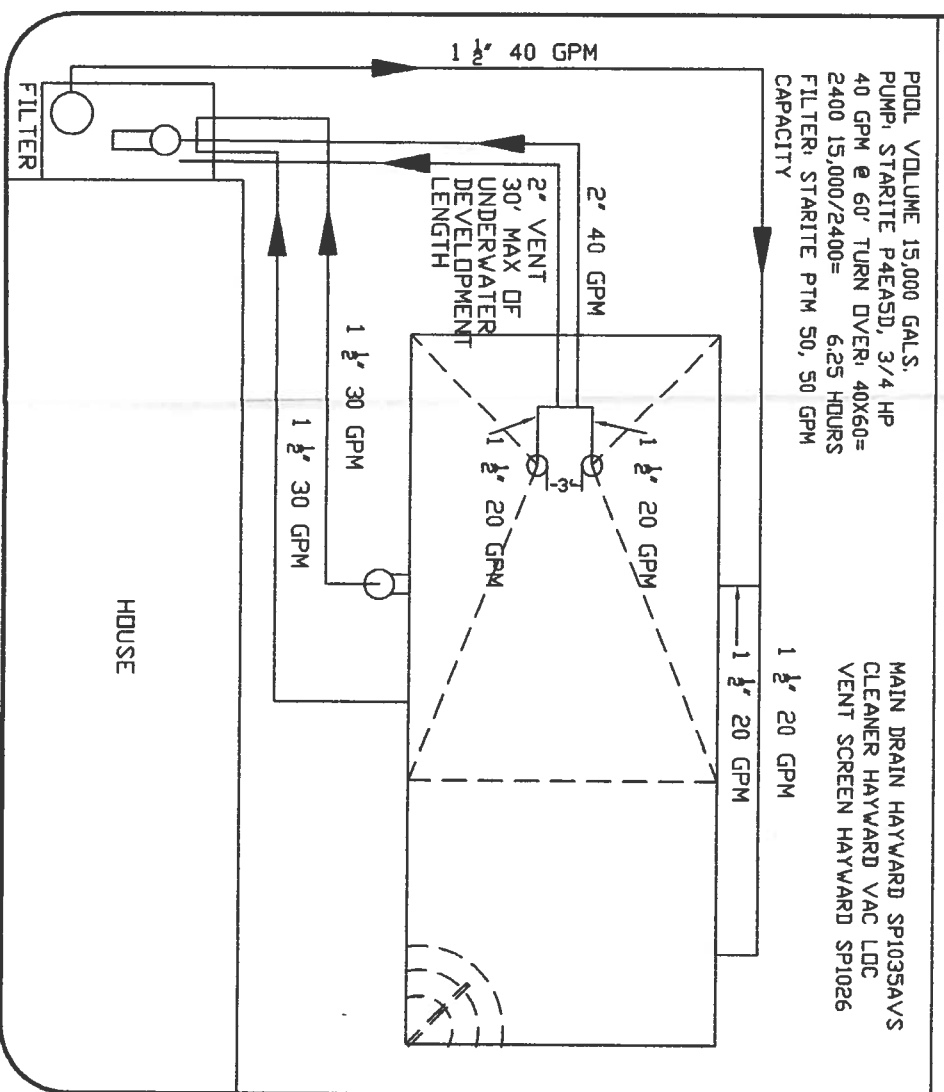
WIRING, BONDING AND ALL ELECTRICAL SHALL COMPLY TO NEC ART. 680 OR LOCAL CODE. NO OUTLET(S) OR OVERHEAD POWER SHALL BE WITHIN 10', IF WITHIN 15' FROM POOL, TRANSFORMER MIN. 10' FROM POOL, 8' ABOVE WATER, 1 BOX 4' EXCEPT WHERE PVC IS APPROVED.

GENERAL SPECIFICATION NOTE  
SEE ATTACHED SPECIFICATIONS  
FOR REQUIRED FITTINGS

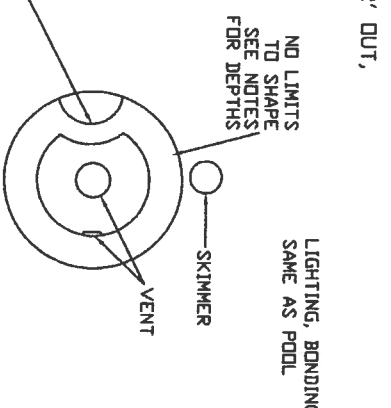
PIPING SIZING CHART (MAXIMUM)		
PIPE	SUCTION	PRESSURE
1 1/2"	35 GPM	60
2"	60	100
2 1/2"	85	145
3"	135	225
4"	235	375

# SAMPLE ONLY

EACH APPLICATION FOR PERMIT SHALL SHOW  
A PLUMBING PLAN IN ADDITION TO ALL OTHER REQUIREMENTS  
PLUMBING SHALL BE BASED ON A TOTAL DYNAMIC HEAD OF 60'.



# SPA PLAN



# FLORIDA BUILDING CODE 424-2

THE POOL CONTRACTOR IS RESPONSIBLE FOR FURNISHING ALL DETAIL DESIGN REQUIREMENTS FOR EACH INDIVIDUAL POOL IN ACCORDANCE WITH THE FLORIDA BUILDING CODE, AND ALL CONSTRUCTION SHALL MEET ALL APPLICABLE CODES INCLUDING PLUMBING, ELECTRICAL AND GAS. PIPING SHALL BE SCH. 40 PVC, NSF, MAX. PRESSURE VELOCITY 10 FPS, SUCTON 6 FPS. THE POOL PLAN SHALL SHOW THE DESIGN PLUMBING AS PER THE SAMPLE WITH THE INFORMATION REQUIRED SHOWN. MAIN DRAIN PLUMBING SHALL BE TWO DRAINS SEPARATED BY 3" WITH APPROVED ANSI/ASME A112.19.8M COVERS. AS AN ALTERNATE THE APPROVED DRAINS MAY BE PLACED ON DIFFERENT PLANES. THE TWO DRAINS SHALL HAVE A COMMON SUCTION LINE. SUCTION GRATES MAY BE USED IF APPROVED AT A MAXIMUM OF 1 1/2 FPS AND THE SUCTION PIPING IS RECESSED FROM THE GRATE THE DISTANCE EQUAL TO THE SUCTION PIPE SIZE. IN ADDITION A SAFETY VACUUM RELEASE SYSTEM MUST BE INSTALLED. THIS MAY CONSIST OF AN AIR RELEASE SYSTEM. THE VENT PIPE SHALL BE TIED TO THE MAIN DRAIN LINES. SIZED THE SAME AS THE MAIN DRAIN SUCTION LINE AND BROUGHT BACK TO THE FILTER LOCATION, ELBOWED UP AND OVER WITH A GRATE FOR PROTECTION AND LABELED "SAFETY VENT". AS AN ALTERNATE THE SAFETY VACUUM RELEASE SYSTEM (SVRS) MAY BE AN APPROVED VALVE MEETING IAPMO IGC 160-2001a. CLEANER SUCTION FITTINGS SHALL BE PROTECTED BY A PERMANENTLY SELF-CLOSING FLAPPER VALVE MEETING ANSI/ASME A112.19.8M. SKIMMERS DO NOT REQUIRE PROTECTION AND MAY BE DESIGNED FOR 30 GPM SUCTION. THE FOLLOWING SHALL BE LABELED AT THE FILTER LOCATION: PIPE, VALVES, "SAFETY VENT" OR "SAFETY DEVICE", PUMP(S) OFF SWITCH.

I HEREBY CERTIFY THAT I HAVE DESIGNED THIS AND IT IS IN COMPLIANCE WITH THE 2004 FLORIDA BUILDING CODE RESIDENTIAL & SECTION R4101.6 FOR CONSTRUCTION & R4101.6.6 FOR ENTRAPMENT PROTECTION, ANSI/NSPI 3-99, FOR INGROUND SPAS AND 5-03 FOR INGROUND SWIMMING POOLS.

THIS MASTER POOL SPEC DRAWING WILL BE VALID FOR ONE (1) YEAR AND REQUIRE RE-CERTIFICATION FOR EACH CONTINUING YEAR TO ENSURE THAT CODE REQUIREMENTS ARE KEPT

# ENGINEER'S CERTIFICATION

STANDARD RESIDENTIAL POOL / SPA DESIGN				
DATE:	DRAWN:	CHECK:	FILE:	JOB #:
11-28-05	DRP	MCA	ST_POOL_DES	12-09-05

**MILES CHRISTIAN ANDERSON CONSULTING ENGINEERS, INC.**  
2300 S.E. 17th STREET, SUITE 200  
OCALA, FLORIDA 34471

**FIESTA POOLS**

STRUCTURAL

LAND PLANNING

(352) 629-5591

FAX (352) 629-4402

PROFESSIONAL ENGINEER

FLORIDA REGISTRATION NO. 393

Office copy