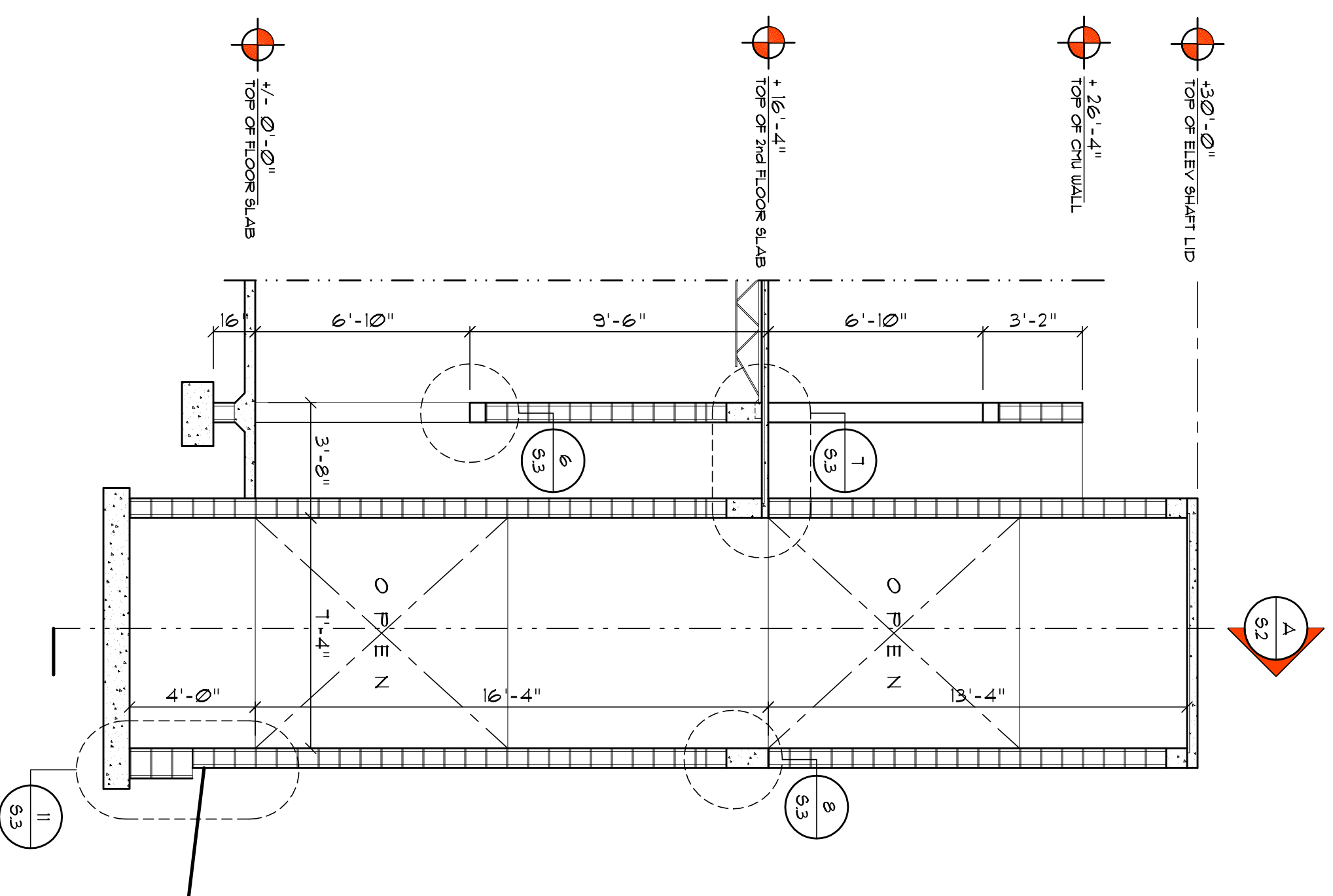


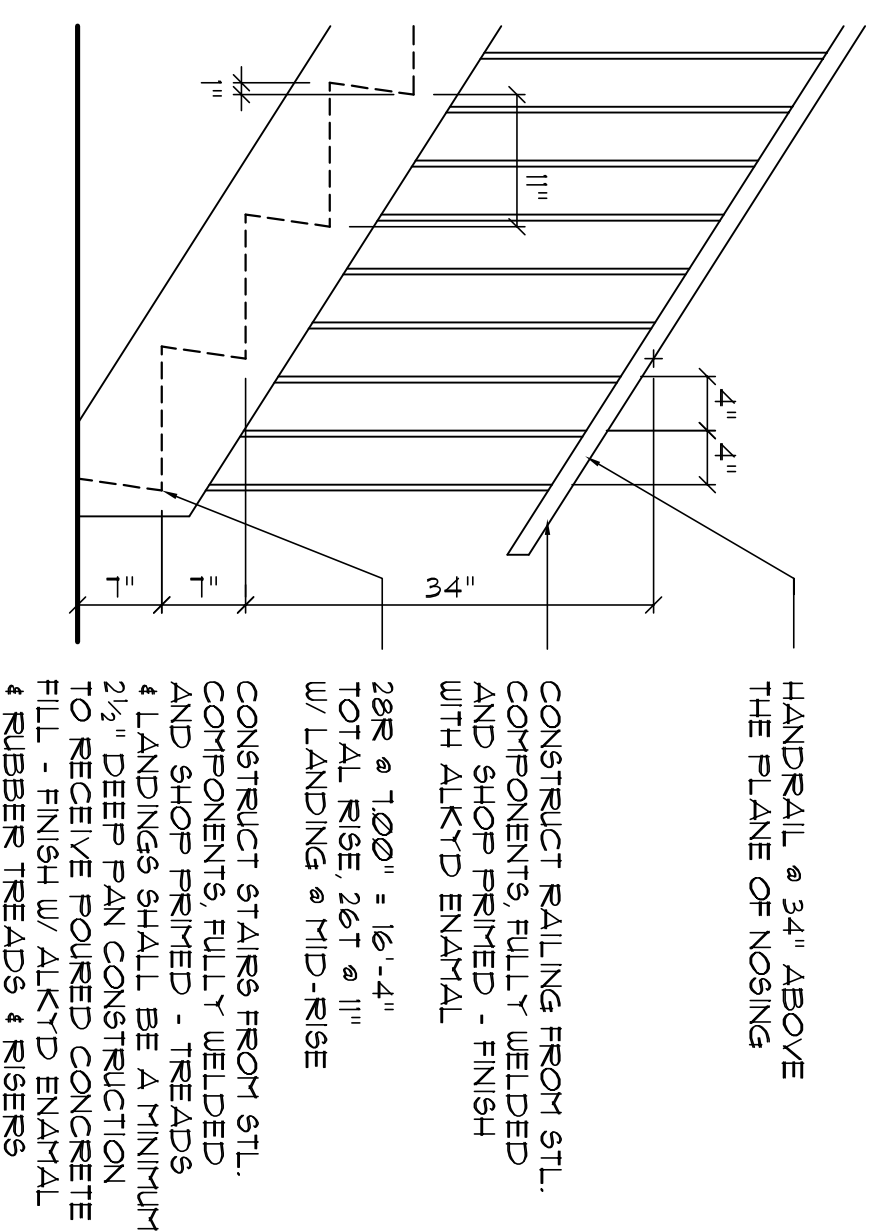
Elevator shaft SECTION
SCALE: 1/4" = 1'-0"

A



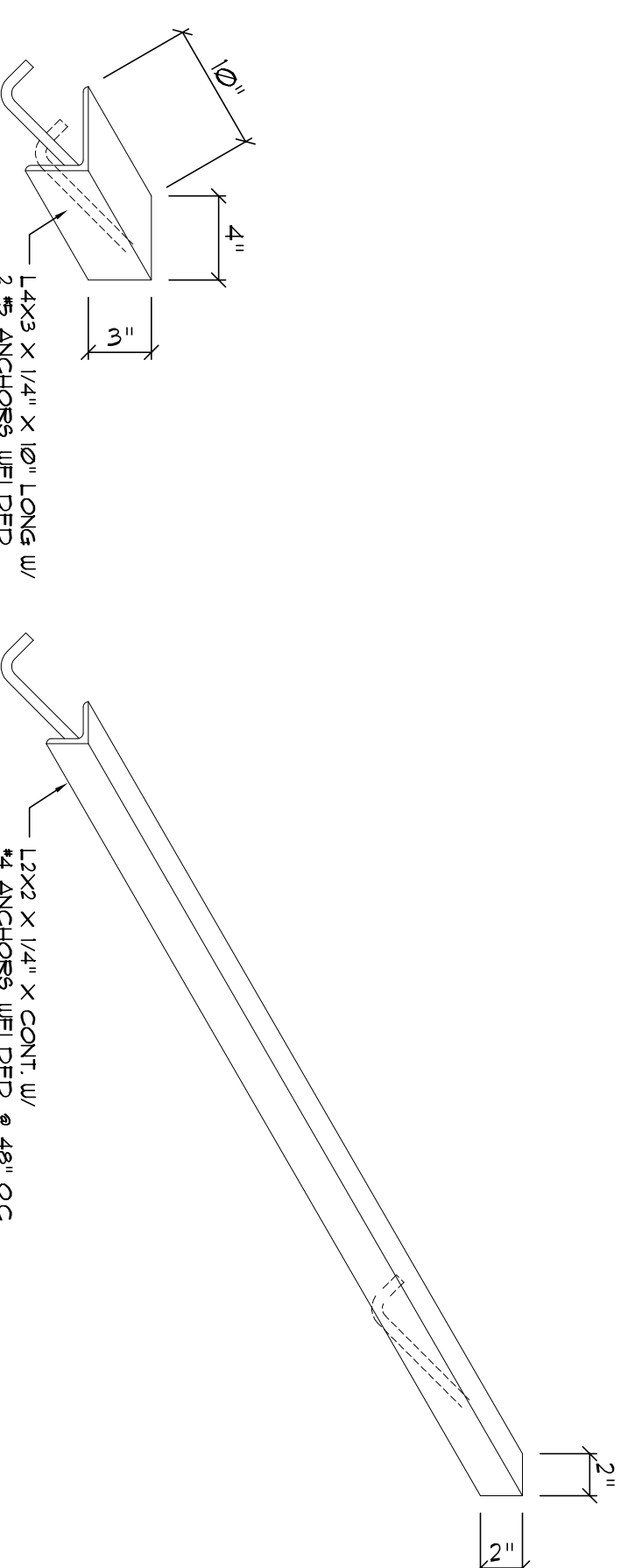
Elevator shaft SECTION
SCALE: 1/4" = 1'-0"

B



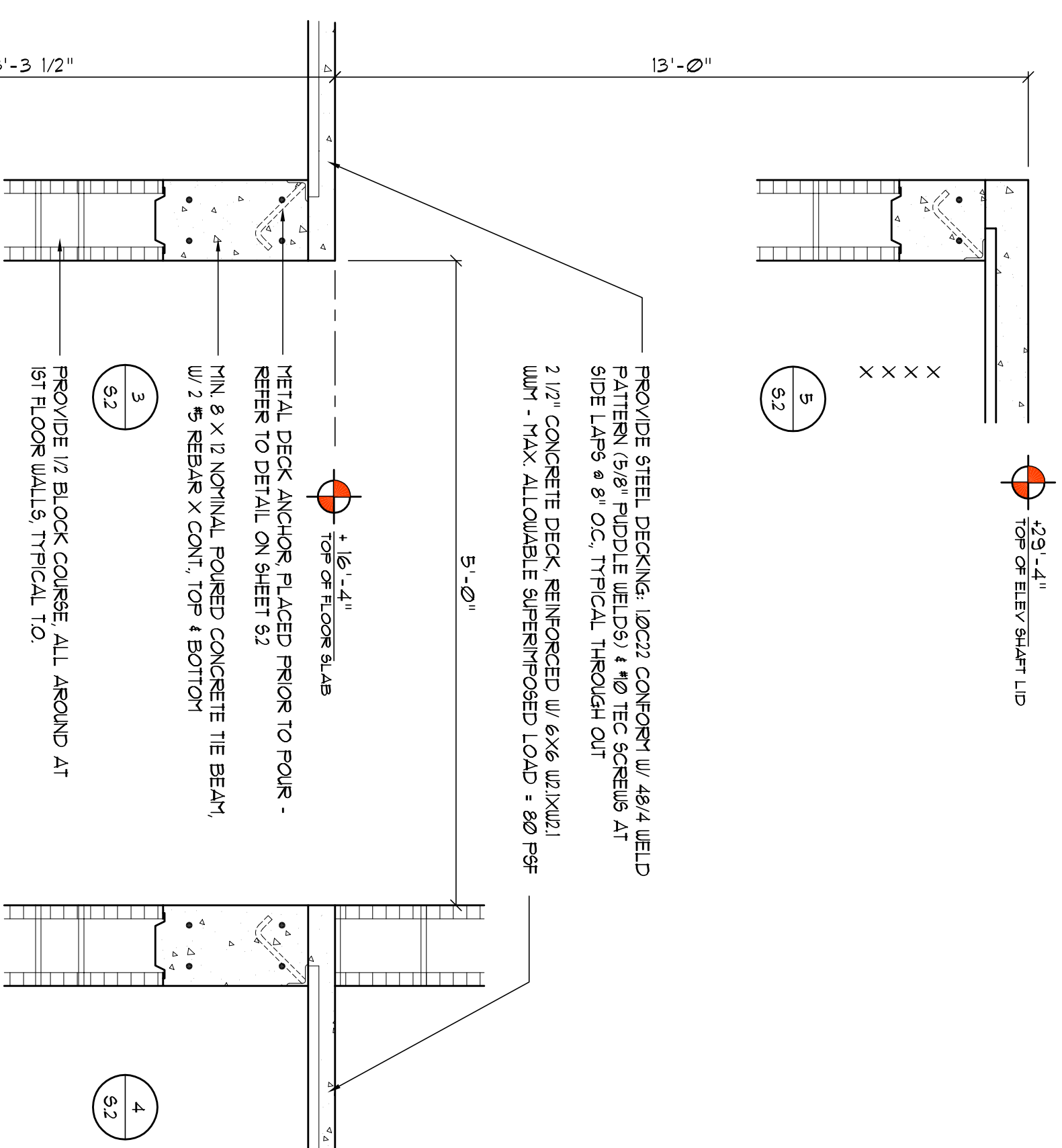
Stair DETAIL
SCALE: 1/4" = 1'-0"

C



Embedded Anchor DETAILS
SCALE: 1/2" = 1'-0"

D



Elevator shaft Section "A" DETAILS
SCALE: 1" = 1'-0"

E

REVISIONS

SOFTPLAN
ARCHITECTURAL SOFTWARE

W.M. Myers

2nd FLOOR EXPANSION for
BELMONT ACADEMY
C.R. 240, COLUMBIA COUNTY, FLORIDA

Digitally signed by: N. P. GEISLER
DN: CN = N. P. GEISLER C = US
O = AR0007005 OU = ARCHITECT
Date: 2020.06.19 13:57:30 -0500

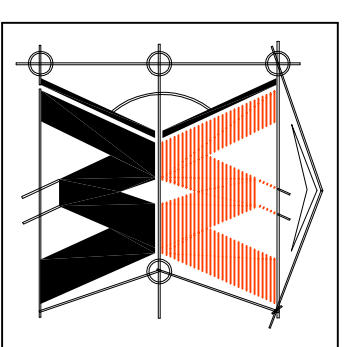
AR0007005

Celebrating
48 Years of Service

1972 - 2020
N.P. Geisler, Architect
AR0007005

NICHOLAS PAUL GEISLER ARCHITECT
1758 NW Brown Rd.
Lake City, FL 32055
386/365-4355

JOINT VENTURED WITH
WILLIAM MYERS DESIGN
P.O. Box 888
Lake City, FL 32055
(386) 758-8406
www.williammyers.com



JOB NUMBER
2K1403

DATE
29 MAY 2020

SHEET NUMBER
5.2

OF 6 SHEETS