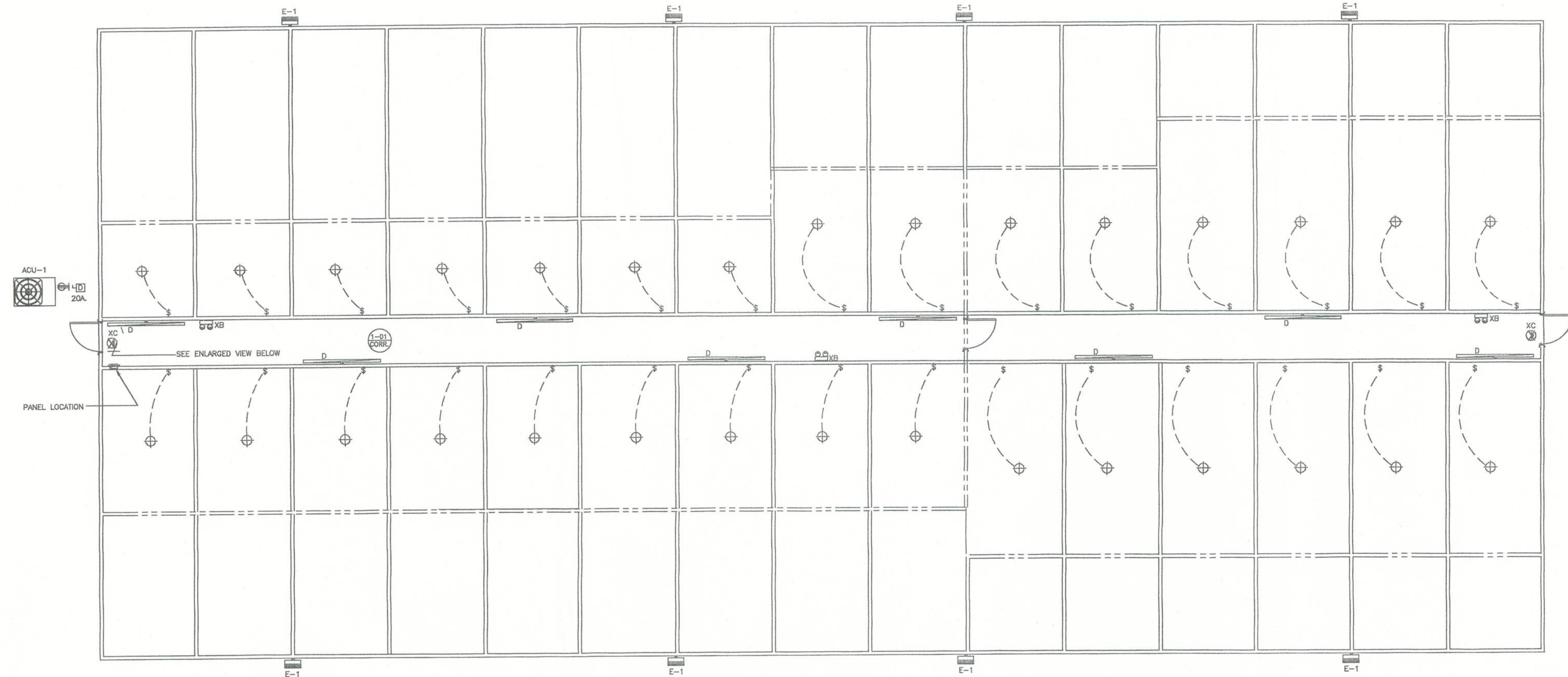


NOTE: THE CONTRACTOR IS DIRECTED TO REVIEW ALL CONSTRUCTION DRAWINGS & SPECIFICATIONS FOR ACCURACY & COMPLETENESS. ANY CONFLICTING INFORMATION SHALL BE BROUGHT TO THE IMMEDIATE ATTENTION OF THE ENGINEER OF RECORD FOR RESOLUTION & CLARIFICATION.

STORAGE BUILDING ELECTRICAL PLAN VIEW

SCALE NOTE:
PLAN VIEW: 1/8" = 1'-0"



NOTE: CONTRACTOR SHALL VERIFY ALL LUMENS & F.C. REQUIREMENTS W/ SELECTED LAMP SUPPLIER & LESSEE REQUIREMENTS LAMP SUPPLIER TO VERIFY COMPLIANCE W/ ENERGY POLICY ACT OF 1992 (EPA-E) AND THE MINIMUM STANDARDS OF THE ILLUMINATING ENGINEERING SOCIETY OF NORTH AMERICA.

CONTRACTOR SHALL VERIFY THE FOLLOWING:
SHIELDING MAY BE REQUIRED FOR USE OF COMPUTERS & SPECIFIC ELECTRONIC VOICE OR DATA EQUIPMENT - COORDINATE W/ MANUFACTURER / SUPPLIER & ELECTRICAL CONTRACTOR TO PROVIDE AS REQUIRED.

ELECTRICAL FIXTURE SYMBOLS

- WALL BRACKET FLUORESCENT, SURFACE MOUNTED
- WALL MOUNTED, EXTERIOR LIGHTING
- CEILING MOUNTED INCANDESCENT LIGHT
- EXIT SIGNAGE - CEILING MOUNTED, SINGLE OR DOUBLE FACED DARKENED QUADRANT INDICATES FACE, ARROWS AS INDICATED
- EMERGENCY LIGHTING
- SURFACE MOUNTED 120/240V PANELBOARD, TOP @ 6'-6" A.F.F.
- JUNCTION BOX
- DISCONNECT SWITCH: SIZE AS NOTED

MECHANICAL EQUIPMENT - REFER TO HVAC PLANS

NOTES:

CONTRACTOR SHALL VERIFY ALL MODEL NUMBERS AND PROVIDE ALL OPTIONS LISTED IN DESCRIPTIONS AND ANY OTHER HARDWARE REQUIRED FOR PROPER INSTALLATION OF ALL FIXTURES

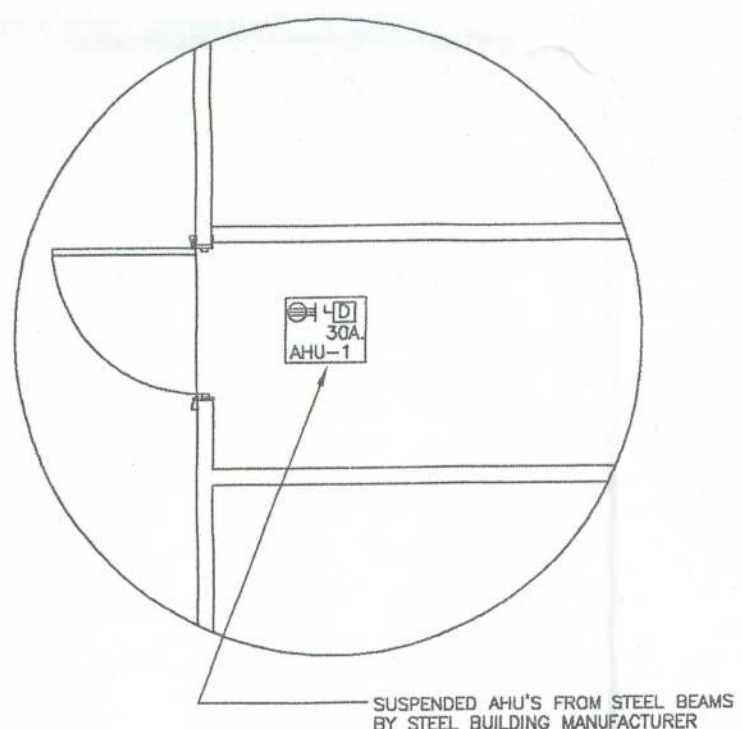
ALL WORK SHALL BE IN EMT OR NMT CONDUIT

CONNECT TO EXISTING ELECTRICAL PANEL

ALL WORK SHALL BE IN FULL COMPLIANCE W/ THE LATEST EDITION OF THE FLORIDA ELECTRICAL CODE

LIGHTING FIXTURE SCHEDULE

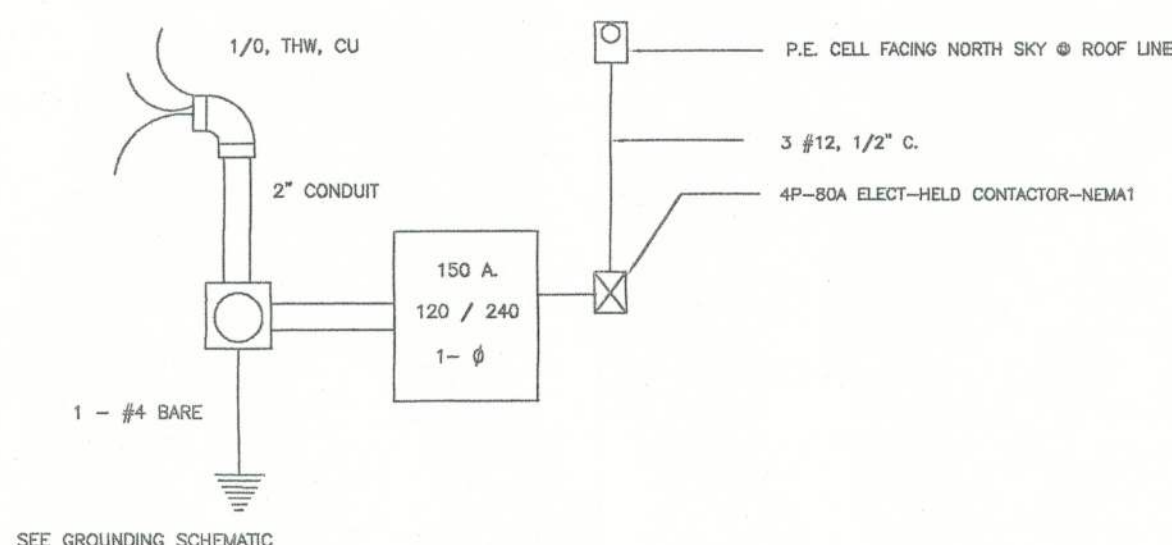
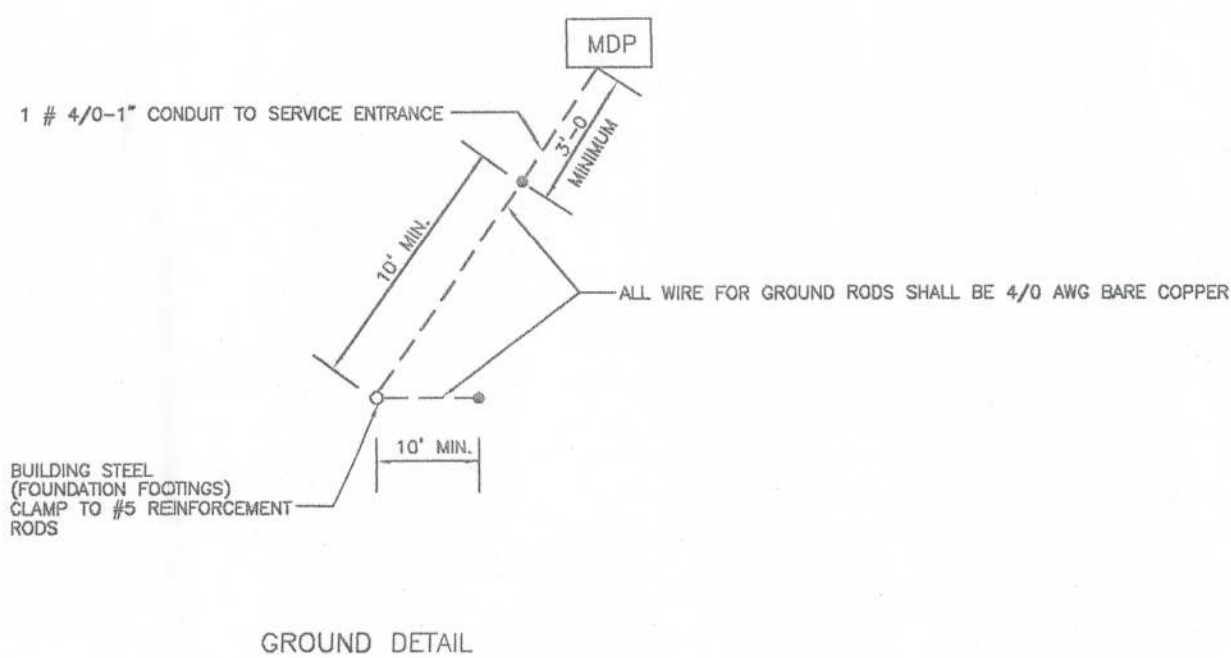
- D 8' LONG, 1" LAMP FLUORESCENT STRIP WITH ELECTRONIC BALLAST, INTERNALLY FUSED AND WHITE FINISH
- LAMPS: 1
- INSTALLATION: SURFACE MOUNTED
- MANUFACTURER: CONTRACTOR SELECTED - OWNER APPROVED
- DAYBRIGHT T232-120-1/2-EB-GLR
- VOLTAGE: 120 V.
- WATTAGE: 65 W.
- E1 NEMA HEAVY DUTY CONSTRUCTION OF DIE-CAST ALUMINUM W/ THERMAL & SHOCK RESISTANT LENS W/ A HIGH POWER BALLAST FACTOR, CONSTANT WATTAGE AUTOTRANSFORMER
- LAMPS: 1-LAMP
- INSTALLATION: SURFACE MOUNTED ABOVE EAVE HEIGHT ON SIDE WALL(S) & END WALL
- MANUFACTURER: LITHONIA MODEL NO. 175K003 1A 1B
- VOLTAGE: 120 V.
- WATTAGE: 400 W.
- XB SELF CONTAINED EMERGENCY BATTERY PACK WITH TWO LIGHTING HEADS, TEST SWITCH AND WHITE FINISH
- LAMPS: LED LAMPS (PROVIDED)
- INSTALLATION: WALL MOUNTED 12" BELOW CEILING
- MANUFACTURER: SURELITES AX1
- VOLTAGE: 120 V.
- WATTAGE: 25 W.
- XC SELF CONTAINED EMERGENCY LED EXIT SIGN WITH CAST ALUMINUM HOUSING, RED LETTERS, SINGLE STENCIL FACE, CAPABLE OF 90 MINUTES OPERATION ON BATTERY. PROVIDE WITH ARROWS AS INDICATED ON PLAN VIEWS.
- LAMPS: LED LAMPS (PROVIDED)
- INSTALLATION: CEILING MOUNTED
- MANUFACTURER: SURELITES QX71700R-ARROWS AS INDICATED
- VOLTAGE: 120 V.
- WATTAGE: 5W
- XCD SAME AS TYPE "XC" EXCEPT DOUBLE FACED
- XW SAME AS TYPE "XC" EXCEPT WALL MOUNTED
- XCL SAME AS TYPE "XC" EXCEPT FLUSH MOUNTED 18" A.F.F.



PANEL		10,000 AMPS, RMS, STD. I.C. INTERGRATED EQUIPMENT RATING	
120/240 VOLTS, 1 PHASE, 3 WIRE, 150 AMPS		MAIN BREAKER	
		MAIN LUGS ONLY	
SERVES	TRIP	TRIP	SERVES
AREA 1-01 LIGHTING & RECEPTACLES	20 1	2 20	AREA 1-01 LIGHTING
EXTERIOR LIGHTING	20 3	4 20	EXTERIOR LIGHTING
EXTERIOR LIGHTING	20 5	6 20	EXTERIOR LIGHTING
ACU-1	50 7	8 30	AHU-1
	2 9	10 2	
SPARE	11	12	SPARE
SPARE	13	14	SPARE
SPARE	15	16	SPARE
SPARE	17	18	SPARE
SPARE	19	20	SPARE
SPARE	21	22	SPARE
SPARE	23	24	SPARE

ALL BREAKERS IN PANEL E TO BE GFCI TYPE

ALL WIRING SHALL BE IN NMT CONDUIT PER LATEST EDITION OF THE NATIONAL ELECTRICAL CODE



ELECTRICAL RISER