

FAN PLATE DETAIL TYP

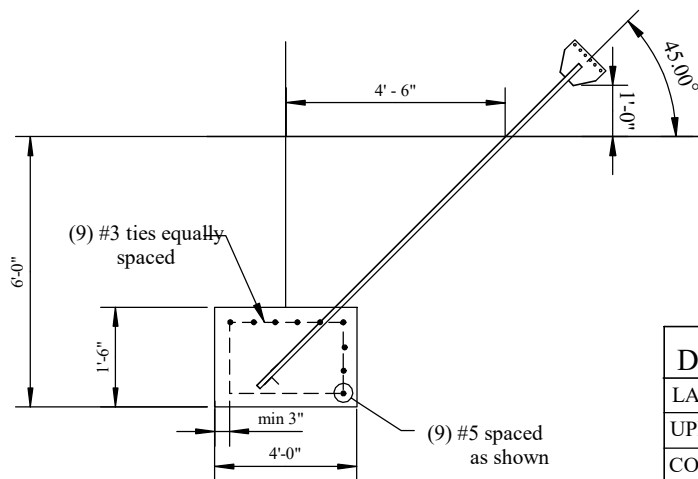
NOT TO SCALE

FOUNDATION DESIGN NOTES:

1. FOUNDATIONS MEET CRITERIA OF ANSI/TIA/EIA-222-G STANDARD.
2. CONCRETE STRENGTH TO EQUAL $F_c' = 3000$ PSI @ 28 DAYS.
3. MINIMUM CONCRETE COVERAGE OF 3 INCHES ON ALL STEEL.
4. INSTALL PROJECTED CENTERLINE OF ANCHOR GUY RODS +/- INCH OFF CENTER OF BASE FOUNDATION.
5. ALL REBAR ARE GRADE 60 WITH ASTM - 615 DEFORMATIONS.
6. INSTALLATION AND REBAR DETAILS SHOULD CONFORM WITH THE LATEST EDITION OF ACI - 315 & ACI - 318.
7. ALL CONSTRUCTION PROCEDURES SHALL MEET THE REQUIREMENTS OF OSHA, THE OWNER, AND ANY OTHER APPLICABLE REGULATIONS TO PROTECT PERSONNEL

MATERIALS:

CONCRETE $F_c' = 3000$ PSI @ 28 DAYS.
 CEMENT ASTM C 150 TYPE 1
 REBAR ASTM A - 615 GRADE 60
 ANCHOR RODS (1" S. R.) FY = 50.0 KSI
 PLATES ANGLES AND SOLID RODS ASTM A36



NOTES:

DESIGN REACTIONS
LATERAL = 18.9 KIPS
UPLIFT = 15.8 KIPS
CONCRETE (CU. YDS.) = 1.33
CONCRETE (WEIGHT LBS.) = 5,050.00

2022.07.2
 7 07:25:46
 -04'00'

		Job#:	190' guyed tower guy anchor foundation
Client:	Dockins Broadcast Group	Wind load:	130 MPH
Project:	190' Guyed tower Lake City, FL	Standard:	ANSI/TIA/EIA-222-G
		Date:	07/15/2022
		Scale:	NOT TO SCALE
		Drawn by:	MB