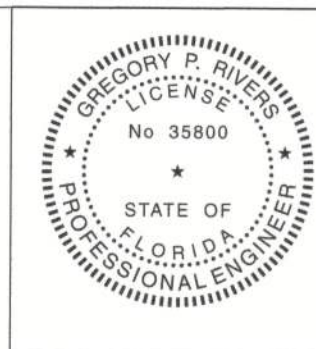


# DETAIL SHEET

RIVERS ENGINEERING, LLC  
GREGORY P. RIVERS, PE. FL. #35800  
1-863-272-4516  
20772 NW 252ND ST. HIGH SPRINGS FL 32643

STRUCTURAL DESIGN IS IN ACCORDANCE WITH THE 2020  
FLORIDA BUILDING CODE.  
SIGNATURE/SEAL ON ANY SHEET IS VALID ONLY  
FOR THE STRUCTURAL DESIGN, OR TO  
INDICATE CONFORMANCE WITH THE STRUCTURAL  
THIS ITEM HAS BEEN DIGITALLY SEALED BY GREG P. RIVERS PE  
ON THE DATE ADJACENT TO THE SEAL. PRINTED COPIES OF THIS  
DOCUMENT ARE NOT CONSIDERED SIGNED AND SEALED AND SIGNATURE  
MUST BE VERIFIED ON ANY ELECTRONIC COPIES

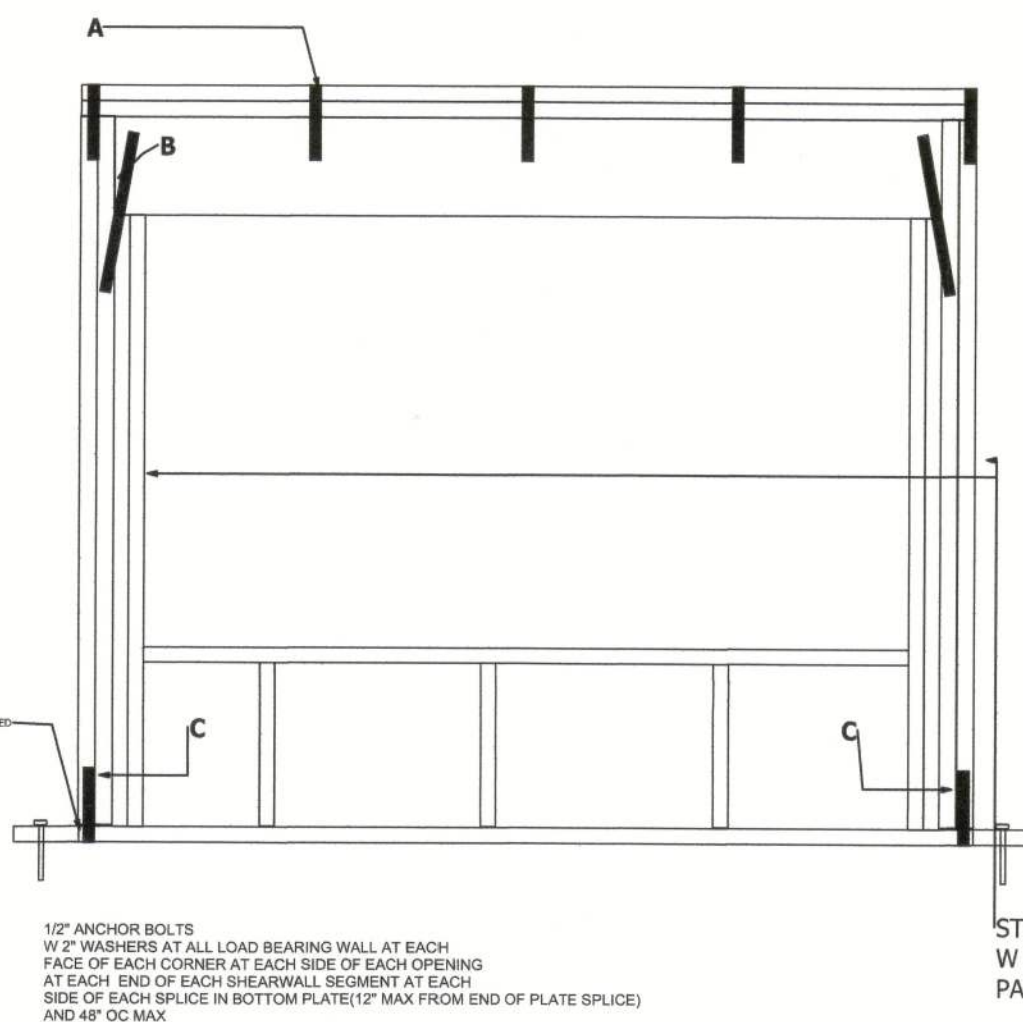
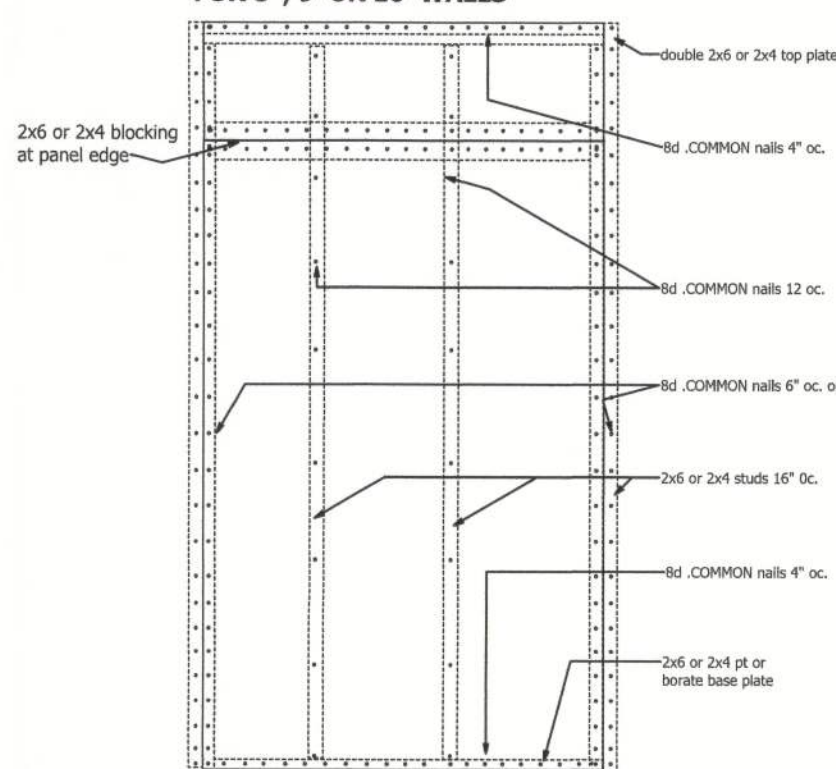


Digitally signed  
by Gregory P  
Rivers  
Date: 2023.09.05  
08:18:44 -04'00'

HEADER SCHEDULE						
SEE FRAMING PLANS FOR EXCEPTIONS						
HEADER CLEAR SPAN (FT) MAX.	HEADER #2 SYP	QTY JACK STUD	QTY FULL STUD	HEADER		
				A	B	C
3'	2-2X12	1	2	SP4or6@24"	(1) LSTA15	(1) SPH4/6
6'	2-2X12	2	2	SP4or6@24"	(2) LSTA15	(2) SPH4/6
11'	NA	2	2	SP4or6@24"	(2) LSTA15	(2) SPH4/6
9'	NA	2	3	SP4or6@24"	(2) LSTA15	(2) SPH4/6
10' GARAGE	2-1.75X11.875 LVL 2.0E	4	3	SP4or6@24"	(3) LSTA15	(3) SPH4/6

STUDS AND STRAPS REQUIRED  
IN TABLE SHALL BE INSTALLED  
ON EACH SIDE OF OPENING

## WALL SHEETING NAILING DETAIL FOR 8', 9' OR 10' WALLS

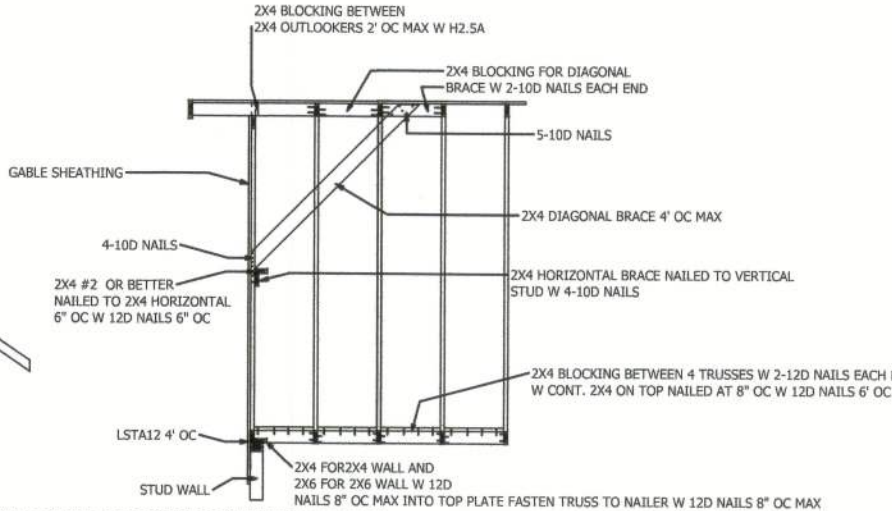
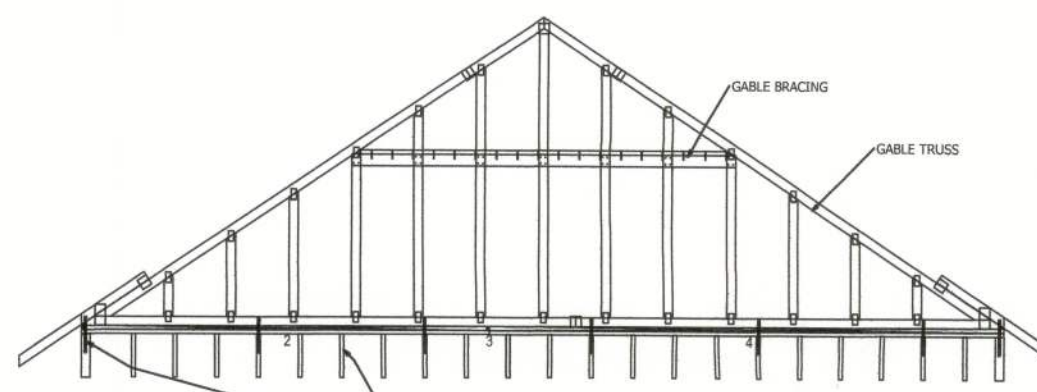


STUD FASTENED TO ANOTHER  
W 10D NAILS 12" OC IN STAGGERED  
PATTERN

Install simpson sp1 and sp2 at top sp2 and bottom sp1 of same stud 32" oc. on all exterior and interior load bearing walls over 8' in height or if a single sheet of sheathing is not cont. from bottom of base plate to top edge of upper most top plate. sp1 and sp2 are not required when using windstorm of the same height. on interior load bearing walls install 1/2"x6" simpson titen hd anchor bolt w 2" washers @ 32" oc max. in lieu of anchor bolts

SEE PLAN FOR HOLD DOWN  
AT END OF SHEARWALL SEGMENTS

BLOCKING IS REQUIRED AT PANEL EDGES



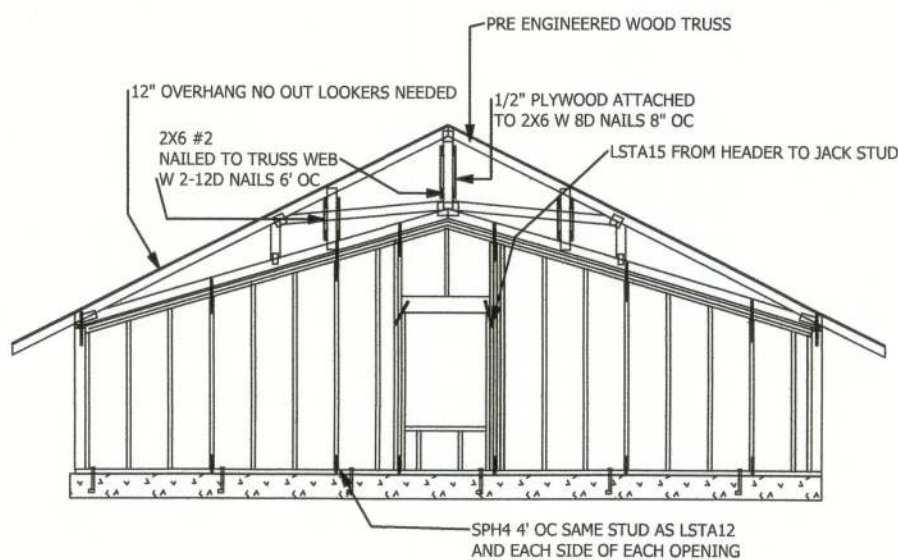
- NOTE:
1. MIN GRADE OF #3 MATERIAL IN TOP AND BOTTOM CHORDS
  2. BRACINGS SPECIFIED ARE TO BE FULL LENGTH GRADES 10A 50B OR 2x4 STUD OR BETTER WITH ONE ROW OF 10D NAILS SPACED 6" OC.
  3. DIAGONAL BRACE TO BE APPROXIMATELY 45 DEG. TO ROOF DASH-RIDGE AT 4' OC.
  4. CONSTRUCT HORIZONTAL BRACE CONNECTING A 2x4 STUD AND A 2x4 STUD AS SHOWN WITH 10D NAILS SPACED 6" OC HORIZONTAL BRACE LOCATED AT THE MIDSPAN OF THE LONGEST STUD. ATTACH TO VERTICAL STUD W 4-10D NAILS THROUGH 2x4
  5. GABLE STUD CONNECTION MEETS OR EXCEEDS LAPS

MIN STUD SIZE SPECIES W/ GRADE	STUD SPACING	BRACE SIZE	BRACE LENGTH	2x4 L BRACE LENGTH	2x4 L BRACE LENGTH	2x4 L BRACE LENGTH	2x4 L BRACE LENGTH
2x4 SP STUD	16" OC	3-10"	4-6"	5-13"	7-8"	11-7"	13-3"
2x4 SP STUD	16" OC	3-10"	4-6"	5-13"	7-8"	11-7"	13-3"
2x4 SP STUD	16" OC	3-10"	4-6"	5-13"	7-8"	11-7"	13-3"

DIAGONAL BRACES OVER #3 REQUIRE 2x4 T BRACE  
ATTACHED TO ONE EDGE. DIAGONAL BRACE OVER 12x6  
REQUIRE 2x4 T BRACE ATTACHED TO BOTH EDGES.  
FASSTER T AND BRACE T NARROW SIDE OF NEW WITH  
10D NAILS 6" OC WITH 2" MIN END DISTANCE. BRACE  
MUST COVER 90% OF DIAGONAL BRACE

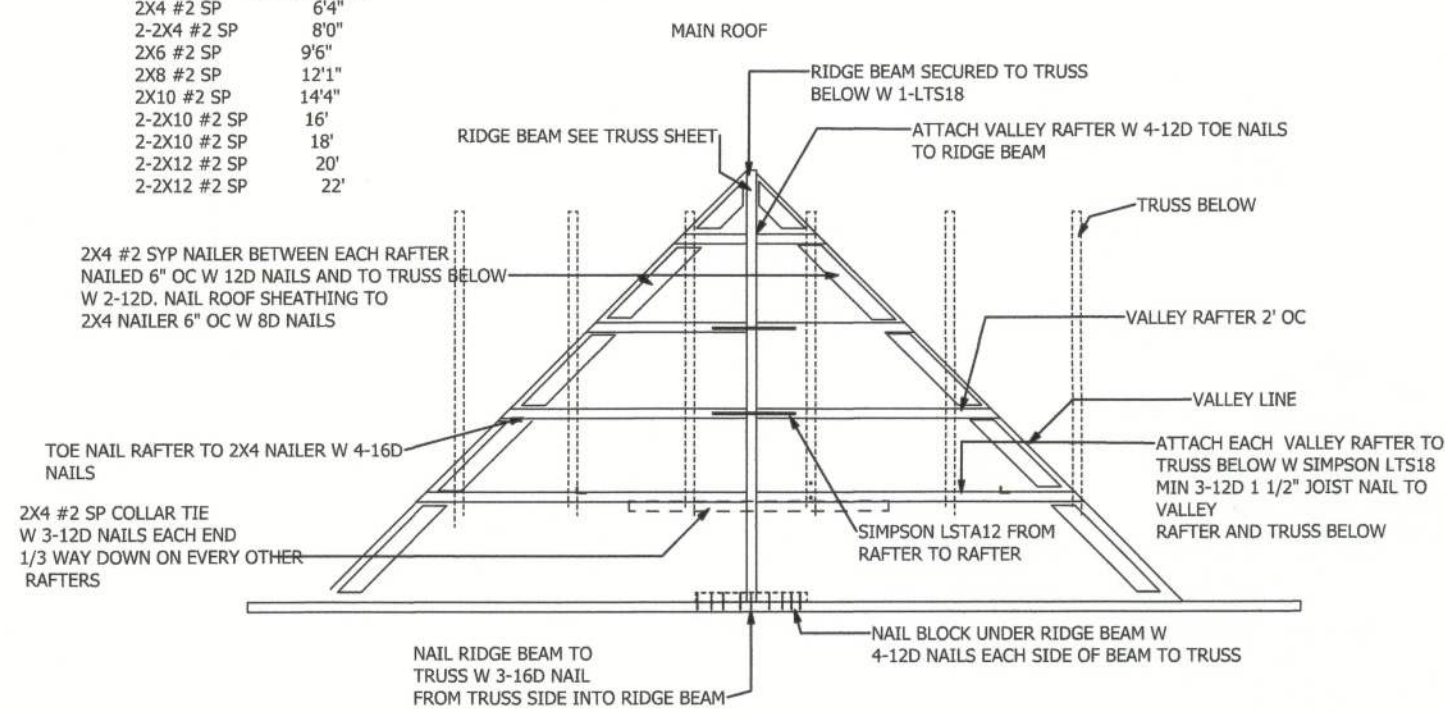
## GABLE BRACE DETAIL

130 MPH WIND ZONE, DEFLECTION LIMIT=L/120 (FLEXIBLE FINISHES -DRYWALL)					
BALLOON FRAMING @ 16" OC					
#2 SPRUCE-PINE-FIR		#2 SOUTHERN PINE		LVL 2.0E	
STUD	MAX STUD LENGTH	STUD	MAX STUD LENGTH	STUD	MAX STUD LENGTH
1-2x6	13'-6"	1-2x6	14'-9"	1-1.75X5.5	17'-3"
2-2x6	17'-0"	2-2x6	18'-6"	2-1.75X5.5	21'-9"
3-2x6	19'-6"	3-2x6	21'-0"	3-1.75X5.5	25'-0"
BALLOON FRAMING @ 12" OC					
#2 SPRUCE-PINE-FIR		#2 SOUTHERN PINE		LVL 2.0E	
STUD	MAX STUD LENGTH	STUD	MAX STUD LENGTH	STUD	MAX STUD LENGTH
1-2x6	14'-9"	1-2x6	16'-0"	1-1.75X5.5	19'-0"
2-2x6	18'-9"	2-2x6	20'-3"	2-1.75X5.5	24'-0"
3-2x6	NA	3-2x6	NA	3-1.75X5.5	27'-6"



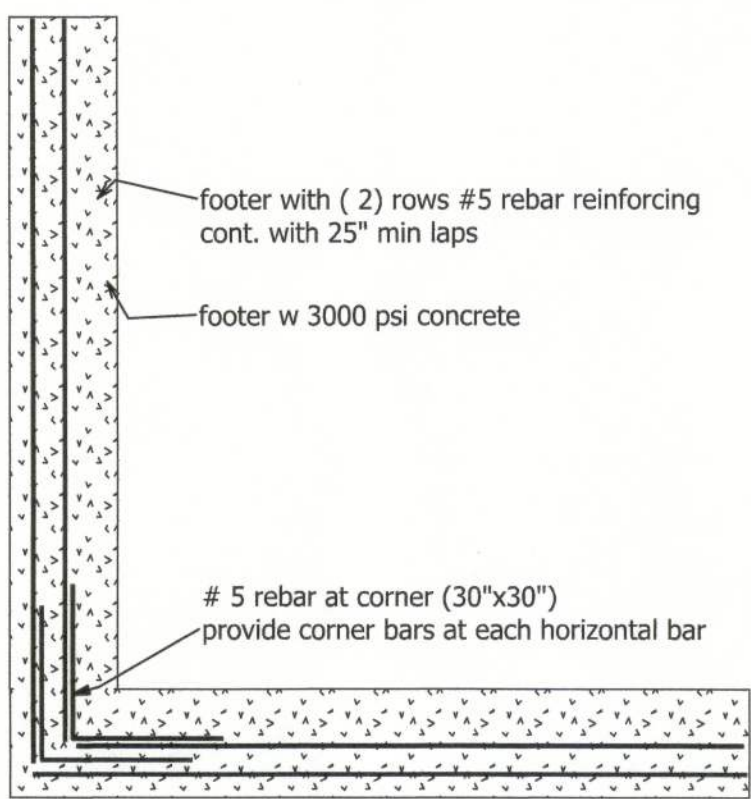
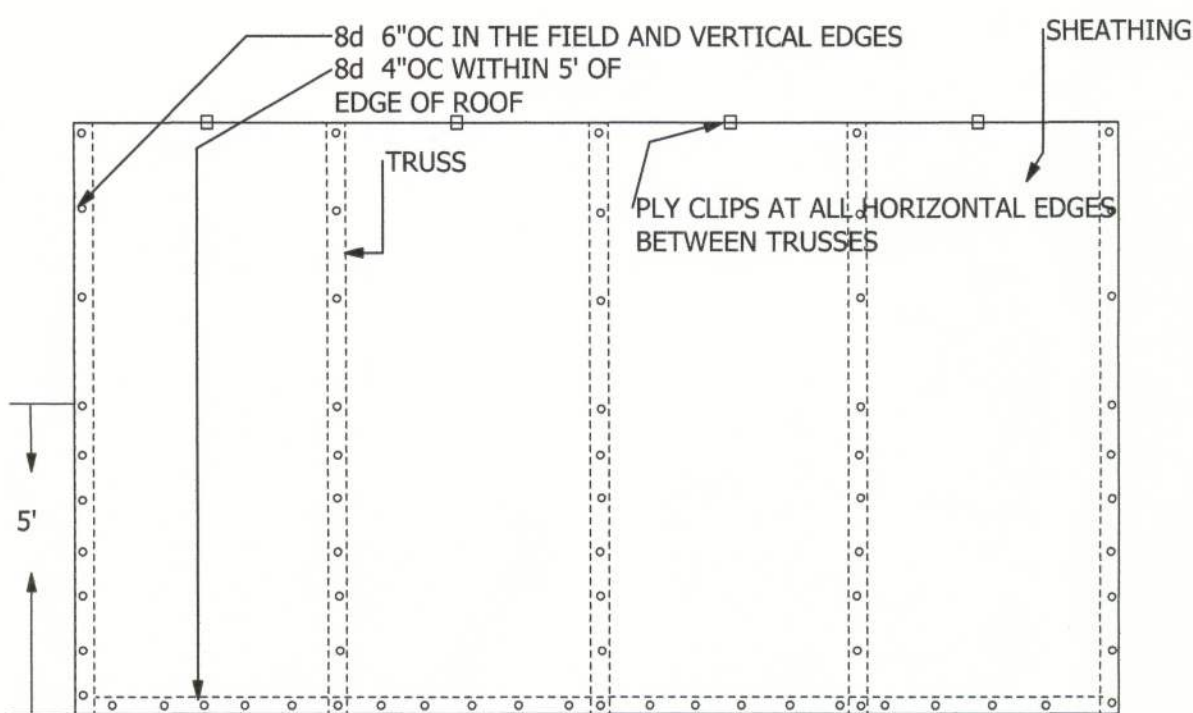
BALLOONED WALL TO STRUCTURAL GABLE  
ON CONC.

RAFTER @ 2' OC MAX SPAN
2x4 #2 SP
2-2x4 #2 SP
2x6 #2 SP
2x8 #2 SP
2x10 #2 SP
2-2x10 #2 SP
2-2x10 #2 SP
2-2x12 #2 SP
2-2x12 #2 SP

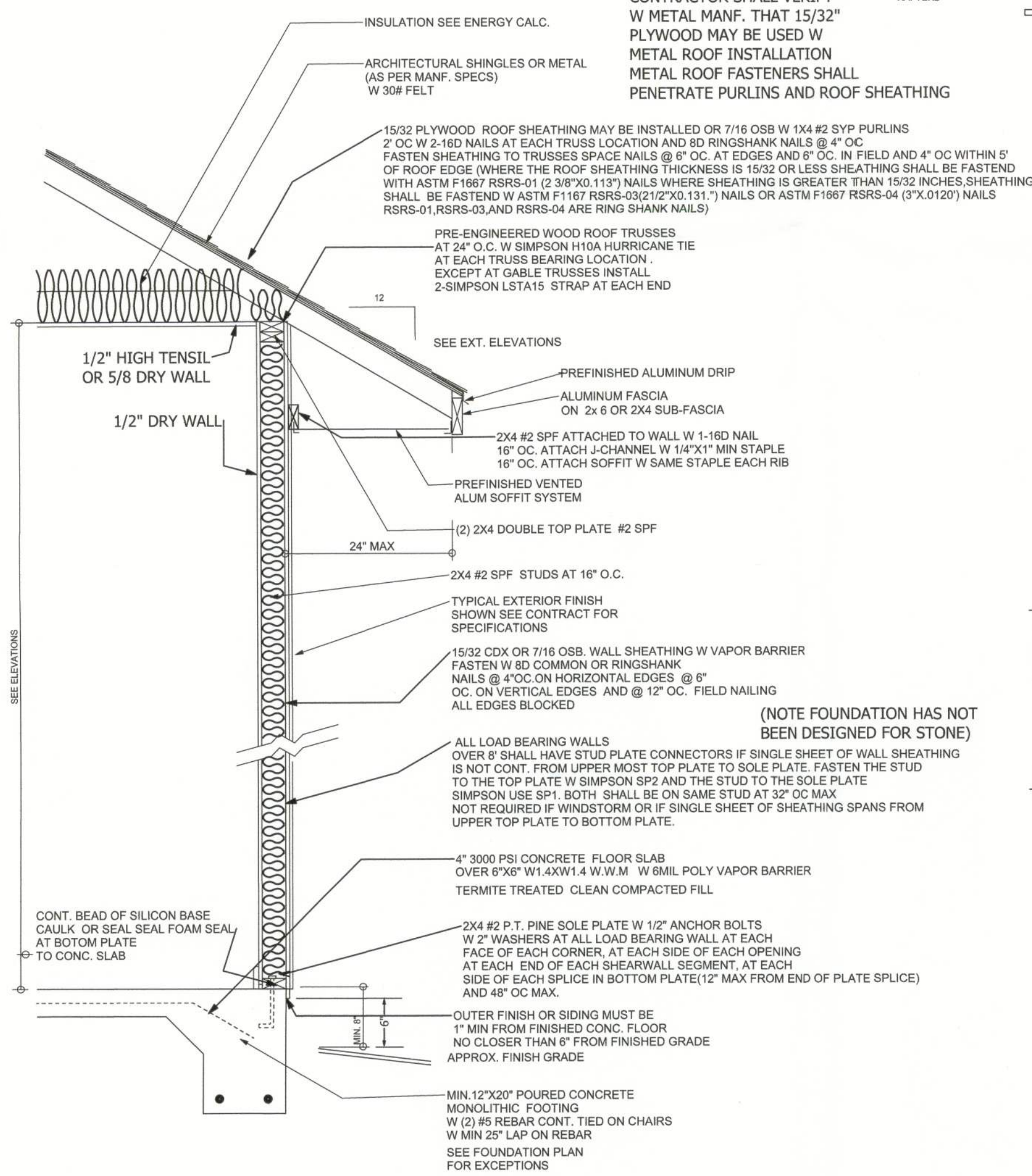


## VALLEY RAFTER DETAIL

## ROOF SHEATHING NAILING DETAIL



## footer reinforcing at corner



## TYPICAL DESIGN WALL SECTION W MONO FOOTING 4" SLAB

SCALE: NA

DATE: 9-1-23

REVISED

DRAWING #

SCALE: NA

DRAWN BY: JASON HEMENWAY 352-493-9613/221-2467

APPROVED

SHEET 6 OF 7

FIRST FLOOR HEATED SQFT-1936  
BONUS ROOM SQFT-224  
GARAGE SQFT-1067  
COVERED PORCH -  
TOTAL SQFT-3227

DRAWN FOR-DON WALLACE  
COUNTY -COLUMBIA  
CONTRACTOR -SELF