

ANCHOR TABLE

OBTAIN UPLIFT REQUIREMENTS FROM TRUSS MANUFACTURER'S ENGINEERING

TRUSS CONNECTOR	UPLIFT SYP	UPLIFT SPF	F1 SYP	F2 SYP	F1 SPF	F2 SPF	TO RAFTER/TRUSS	TO PLATES
H5	455	265	115	200	100	170	4-8d x 1 1/2"	4-8d x 1 1/2"
H3	415	290	125	160	105	140	4-8d x 1 1/2"	4-8d x 1 1/2"
H2.5	415	365	150	150	130	130	5-8d x 1 1/2"	5-8d x 1 1/2"
H2.5A	480	480	110	110	110	110	5-8d x 1 1/2"	5-8d x 1 1/2"
H6	950	820					8-8d	8-8d
H8	745	565					5-10d x 1 1/2"	5-10d x 1 1/2"
H14-1	1465	1050	515	265	480	245	12-8d x 1 1/2"	13-8d
H14-2	1465	1050	515	265	480	245	12-8d x 1 1/2"	15-8d
H10	990	850	585	525	505	450	8-8d x 1 1/2"	8-8d x 1 1/2"
H10-2	780	655	455	395	390	340	6-10d	6-10d
H16	1470	1265					2-10d x 1 1/2"	10-10d x 1 1/2"
H16-2	1470	1265					2-10d x 1 1/2"	10-10d x 1 1/2"
LT912 - LT920	1000	620					6-10d x 1 1/2"	6-10d x 1 1/2"
MTR12 - MTR30	1000	860					7-10d x 1 1/2"	7-10d x 1 1/2"
HTS16 - HTS30	1450	1245					12-10d x 1 1/2"	12-10d x 1 1/2"

HEAVY GIRDER TIEDOWNS

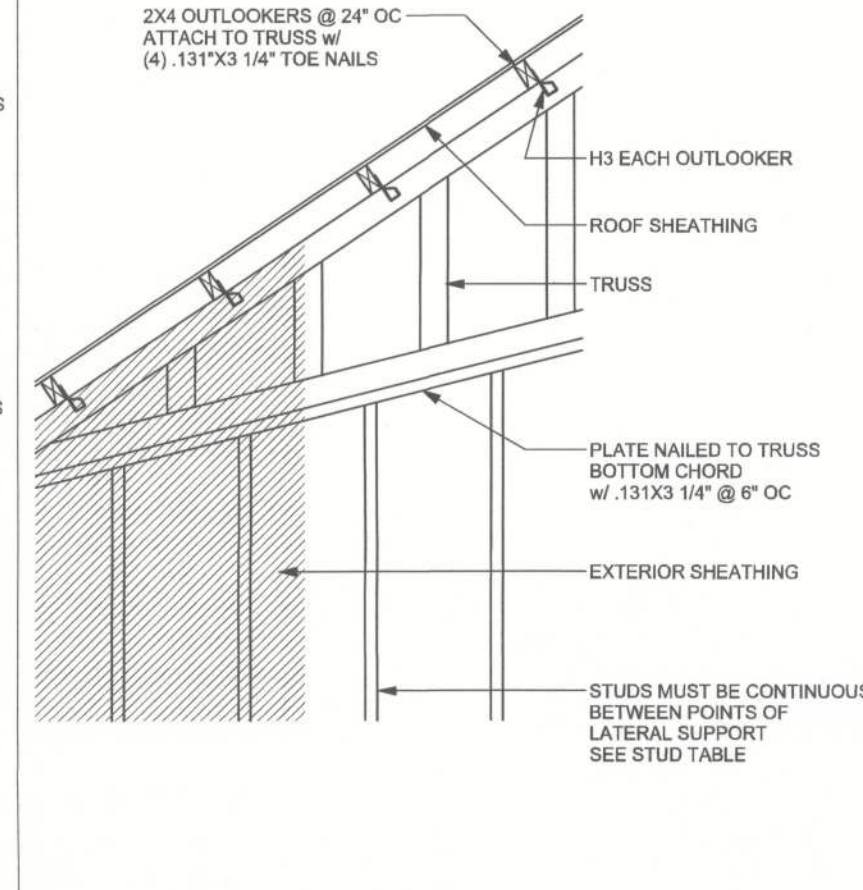
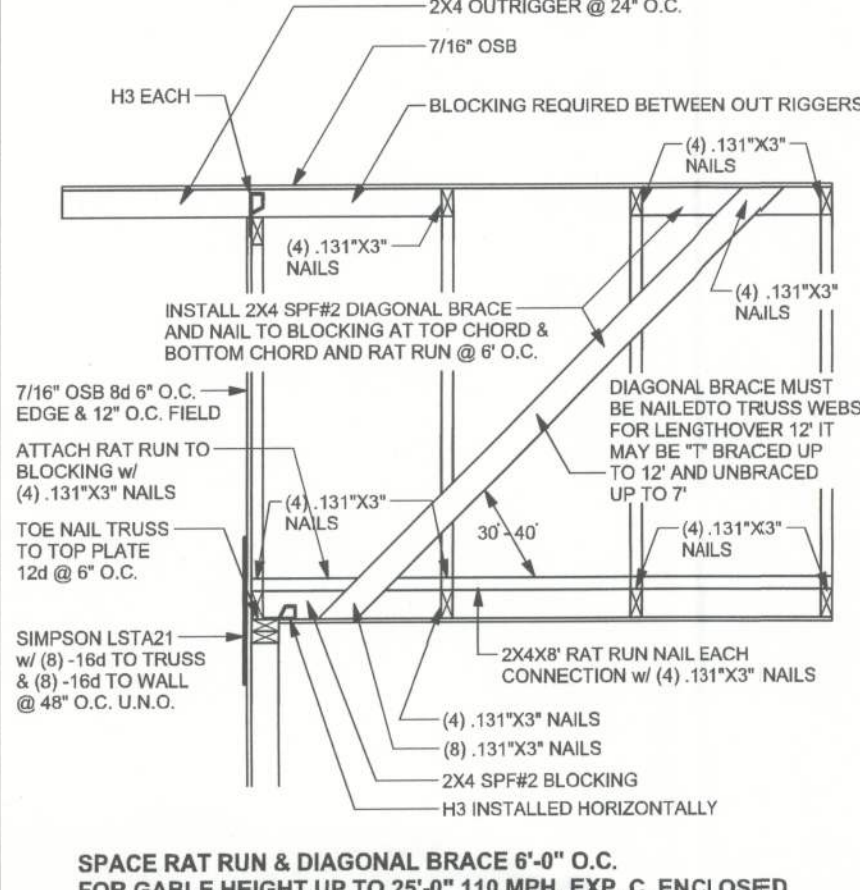
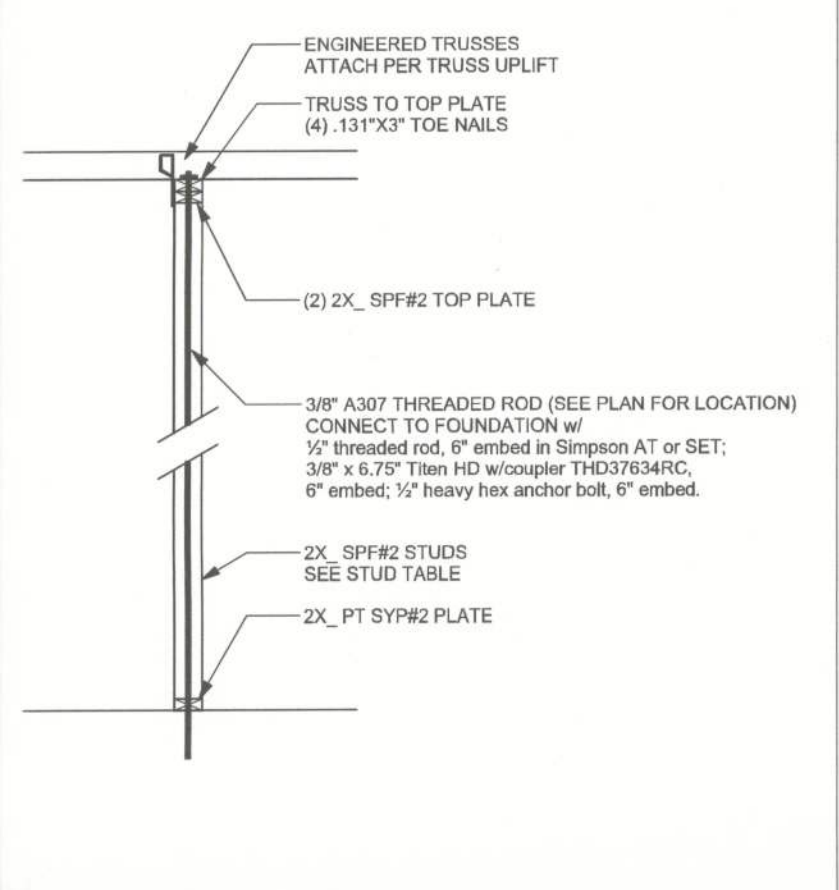
LG2	2050	1785	700	170	700	170	14-16d	14-16d
LG3-SDS2.5	3685	2655	795	410	795	410	12-SDS 1/4" x 2 1/2"	26-16dS
LG4-SDS3	4060	3960	2000	675	2000	675	12-SDS 1/4" x 3"	36-16dS
MGT	3965	3330					22-10d	5/8" ANCHOR
HST-2	10980	6485					16-10d	2-5/8" ANCHOR
HST-3	10530	9035					16-10d	2-5/8" ANCHOR
HST-4	9250	9250					16-10d	2-5/8" ANCHOR

STUD STRAP CONNECTOR

SSP DOUBLE TOP PLATE	435	435						3-10d 4-10d
SSP SINGLE SILL PLATE	455	420						1-10d 4-10d
DSP DOUBLE TOP PLATE	825	625						6-10d 8-10d
DSP SINGLE SILL PLATE	825	600						2-10d 8-10d
SP1	585	535						4-10d 6-10d
SP2	1065	605						6-10d 6-10d
SP4	885	760						6-10d x 1 1/2"
SPH4	1240	1065						10-10d x 1 1/2"
SP6	885	760						6-10d x 1 1/2"
SPH6	1240	1065						10-10d x 1 1/2"
LSTA18	1235	1110						14-10d
LSTA21	1235	1235						16-10d
CS20	1030	1030						14-10d
CS16	1705	1705						22-10d

STUD ANCHORS

LTT19	1350	1305					8-16d	1/2" ANCHOR
LTT131	2310	2310					18-10d x 1 1/2"	5/8" ANCHOR
HD2A	2775	2570					2-5/8" BOLTS	5/8" ANCHOR
HT16	4175	3685					18-16d	5/8" ANCHOR
HT22	5280	5250					32-16d	5/8" ANCHOR
ABU44	2200	2200					12-16d	5/8" ANCHOR
ABU68	2300	2300					12-16d	5/8" ANCHOR
ABU88	2320	2320					16-16d	2-5/8" ANCHOR



ANCHOR TABLE

OBTAIN UPLIFT REQUIREMENTS FROM TRUSS MANUFACTURER'S ENGINEERING

TRUSS CONNECTOR	UPLIFT SYP	UPLIFT SPF	F1 SYP	F2 SYP	F1 SPF	F2 SPF	TO RAFTER/TRUSS	TO PLATES
H5	455	265	115	200	100	170	4-8d x 1 1/2"	4-8d x 1 1/2"
H3	415	290	125	160	105	140	4-8d x 1 1/2"	4-8d x 1 1/2"
H2.5	415	365	150	150	130	130	5-8d x 1 1/2"	5-8d x 1 1/2"
H2.5A	480	480	110	110	110	110	5-8d x 1 1/2"	5-8d x 1 1/2"
H6	950	820					8-8d	8-8d
H8	745	565					5-10d x 1 1/2"	5-10d x 1 1/2"
H14-1	1465	1050	515	265	480	245	12-8d x 1 1/2"	13-8d
H14-2	1465	1050	515	265	480	245	12-8d x 1 1/2"	15-8d
H10	990	850	585	525	505	450	8-8d x 1 1/2"	8-8d x 1 1/2"
H10-2	780	655	455	395	390	340	6-10d	6-10d
H16	1470	1265					2-10d x 1 1/2"	10-10d x 1 1/2"
H16-2	1470	1265					2-10d x 1 1/2"	10-10d x 1 1/2"
LT912 - LT920	1000	620					6-10d x 1 1/2"	6-10d x 1 1/2"
MTR12 - MTR30	1000	860					7-10d x 1 1/2"	7-10d x 1 1/2"
HTS16 - HTS30	1450	1245					12-10d x 1 1/2"	12-10d x 1 1/2"

HEAVY GIRDER TIEDOWNS

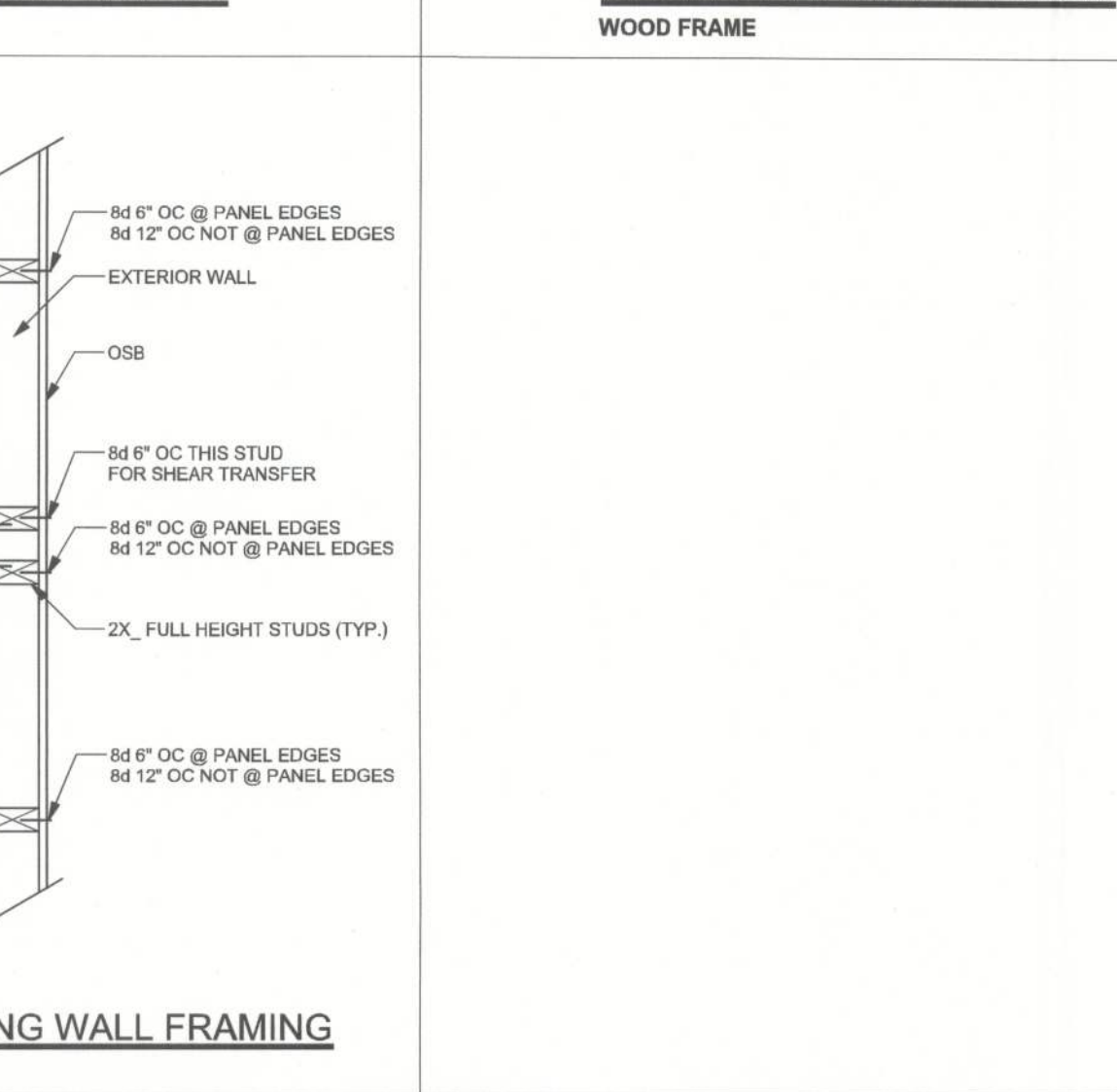
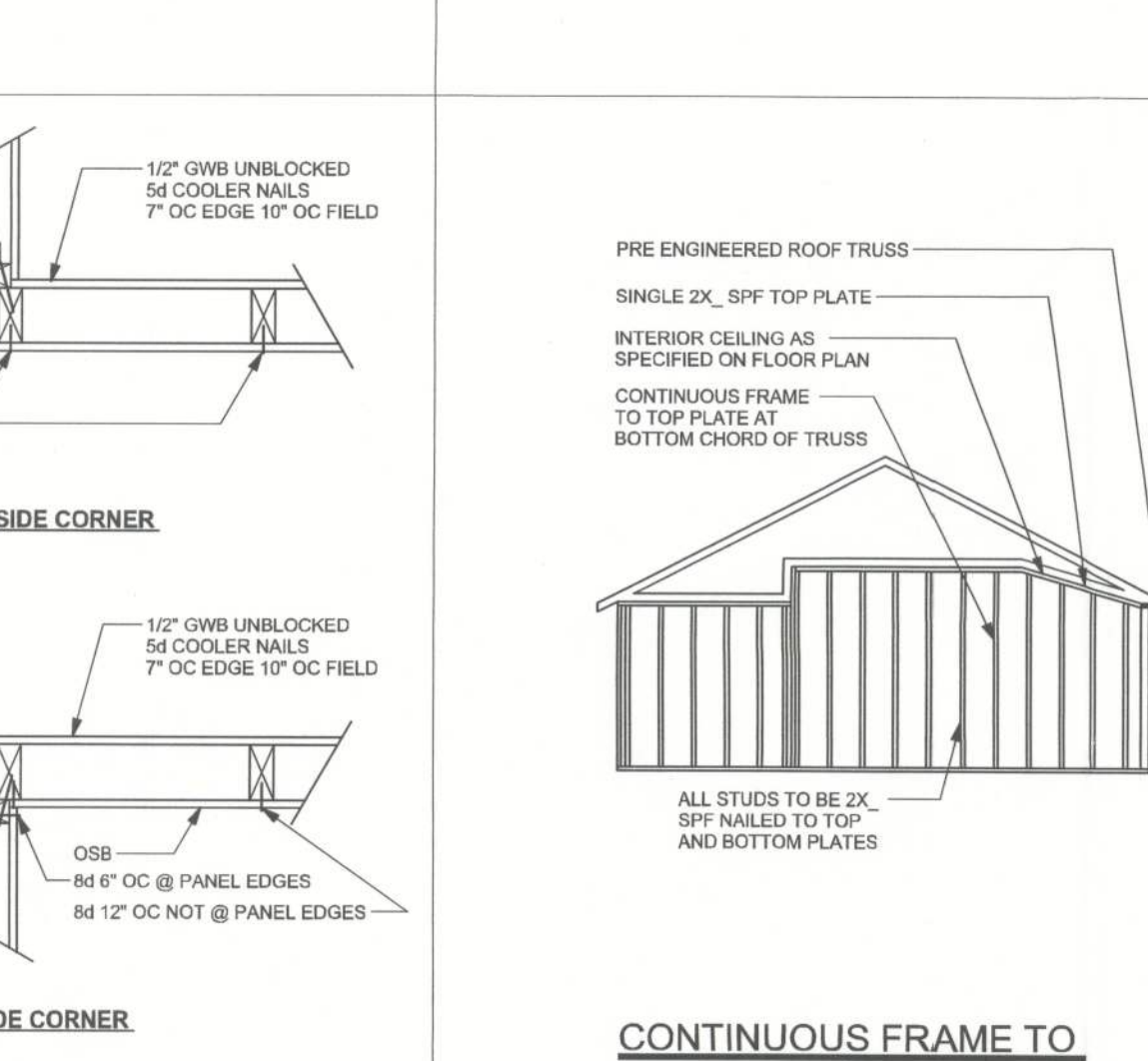
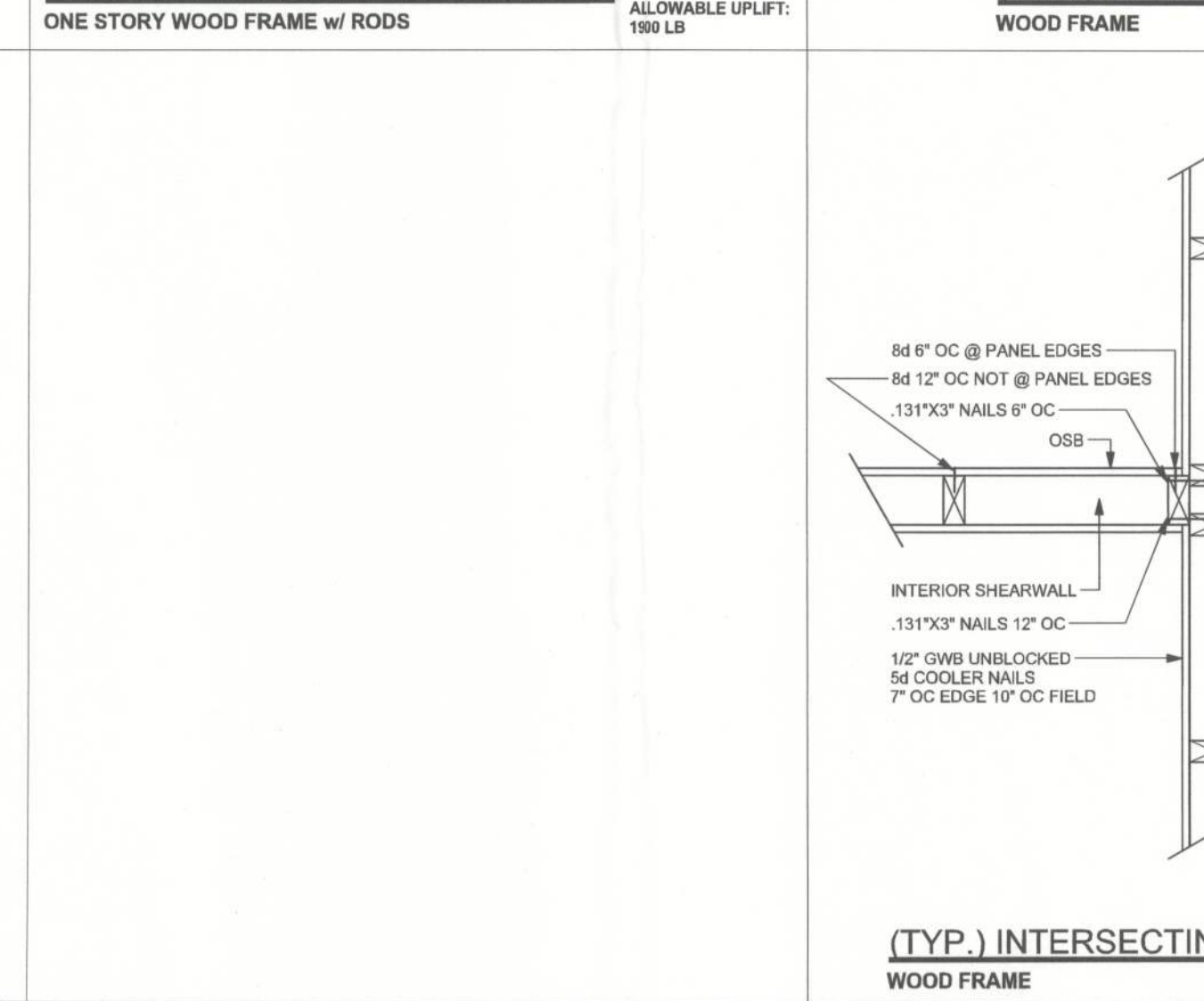
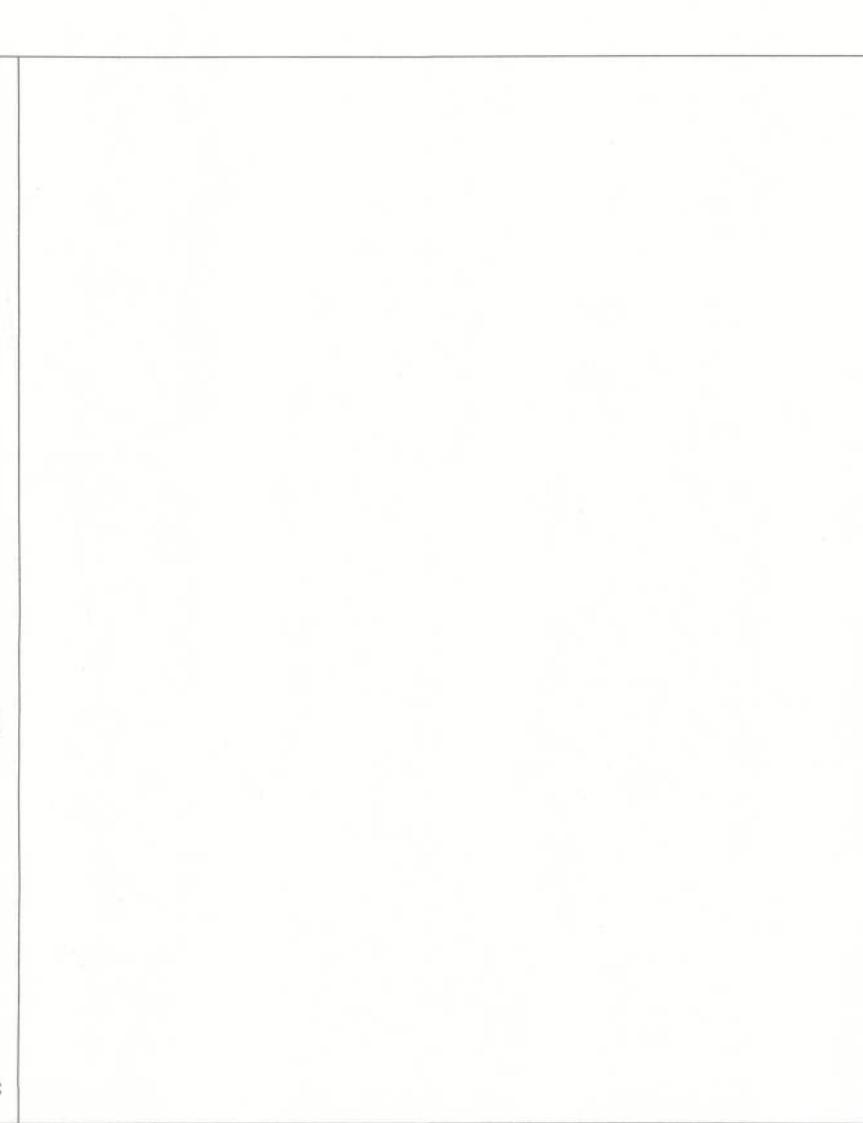
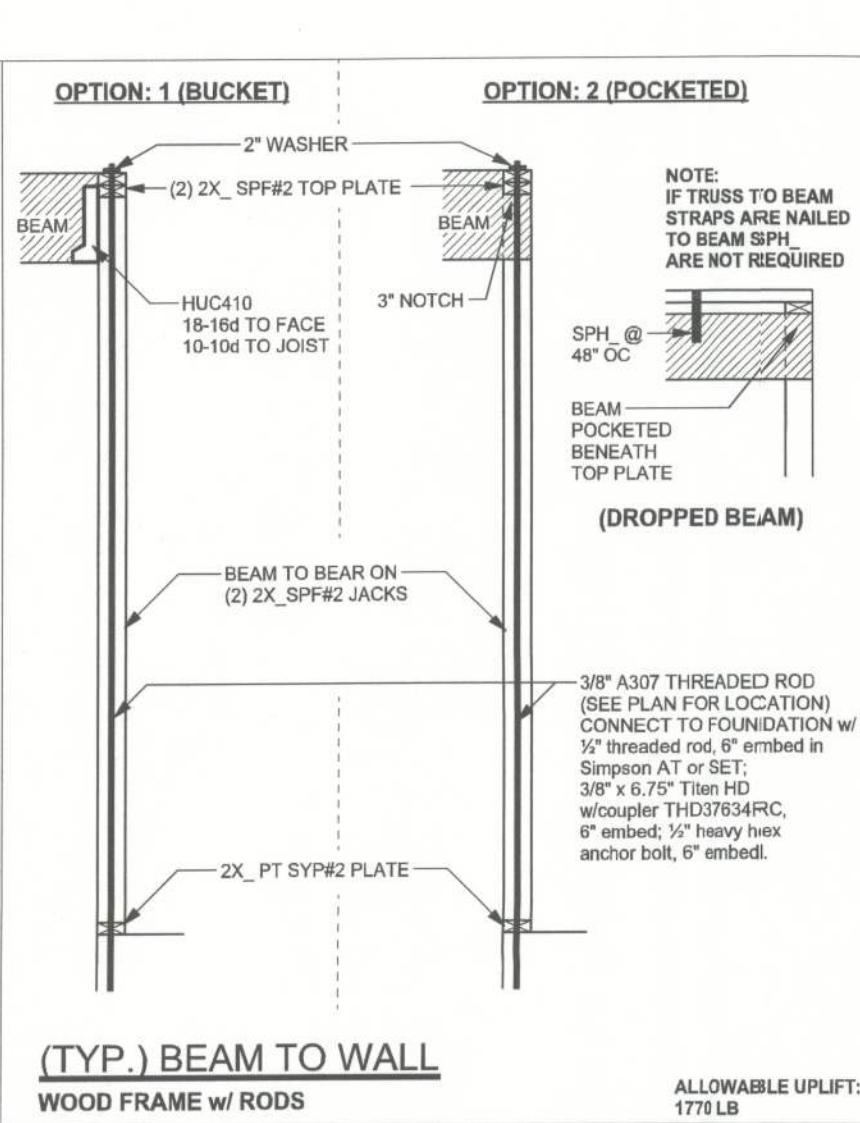
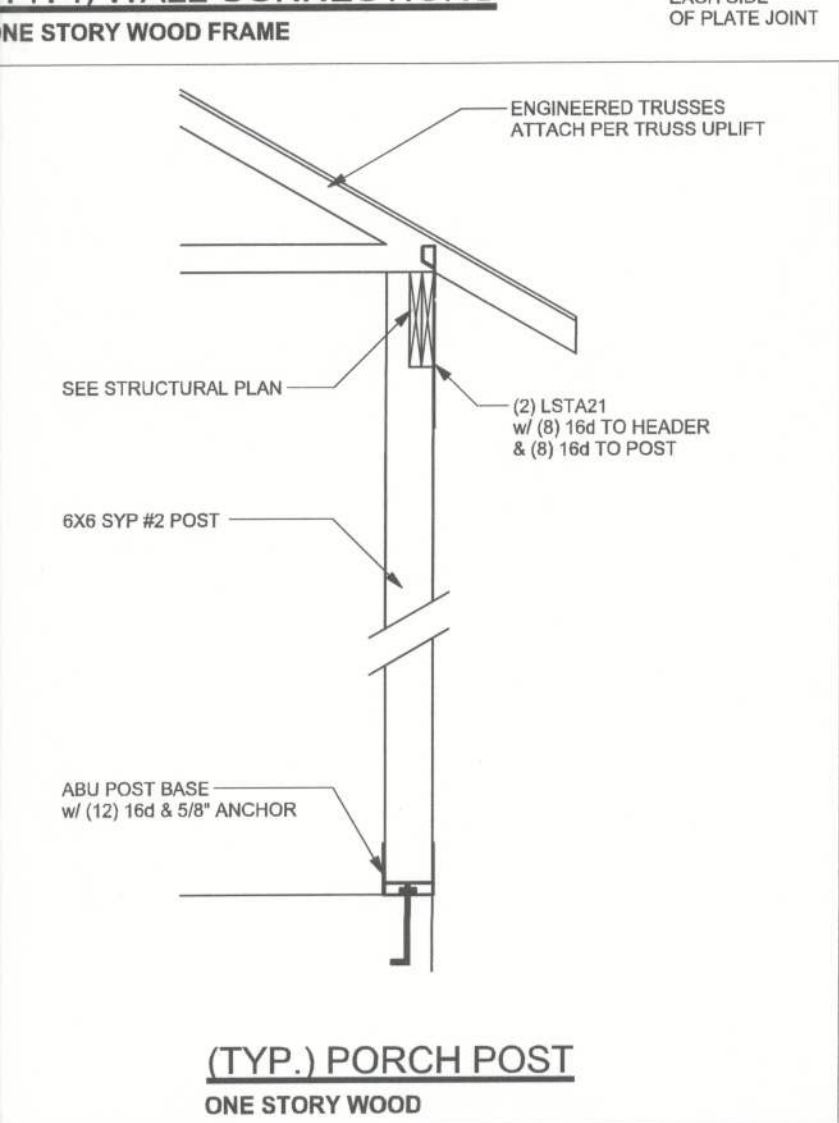
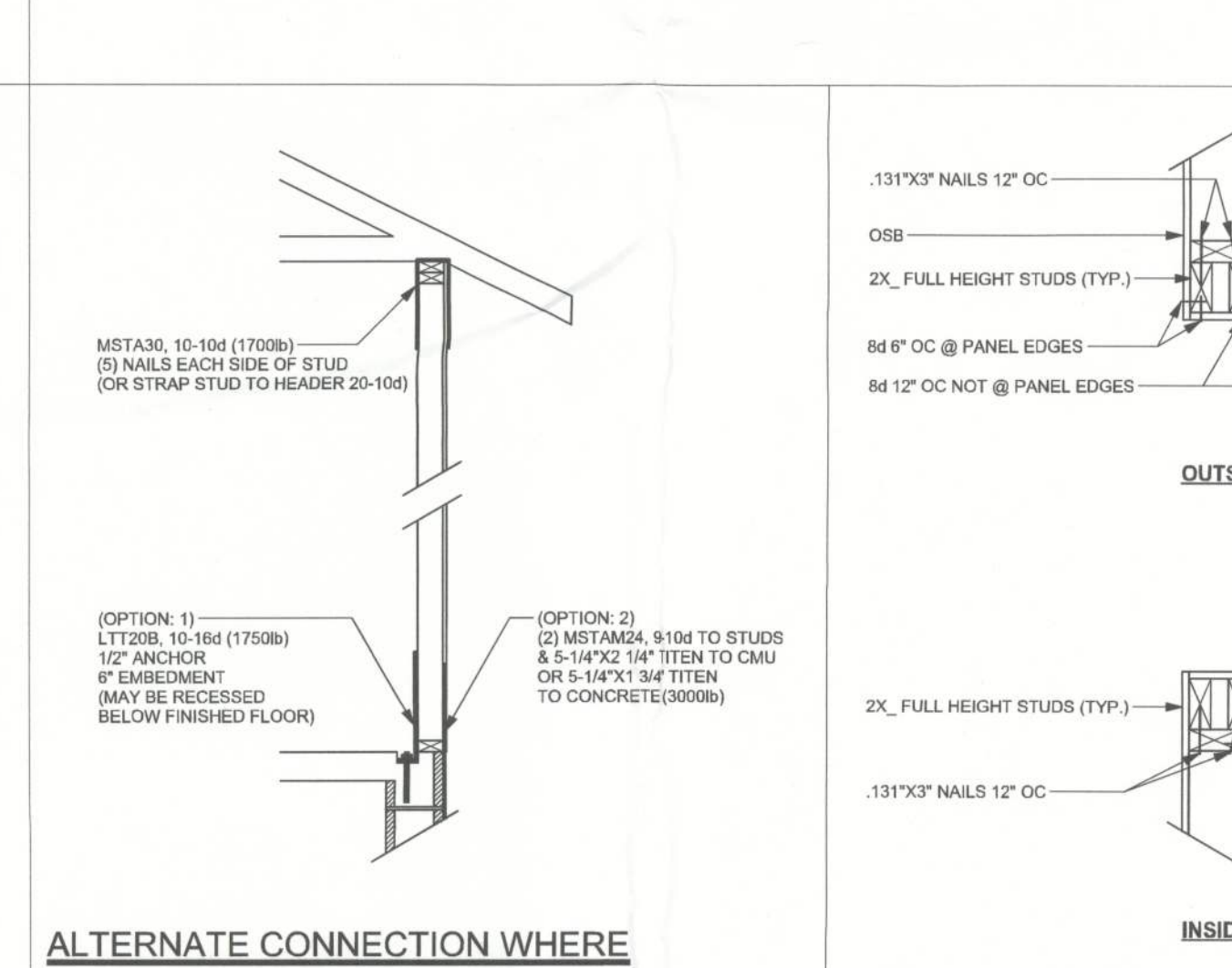
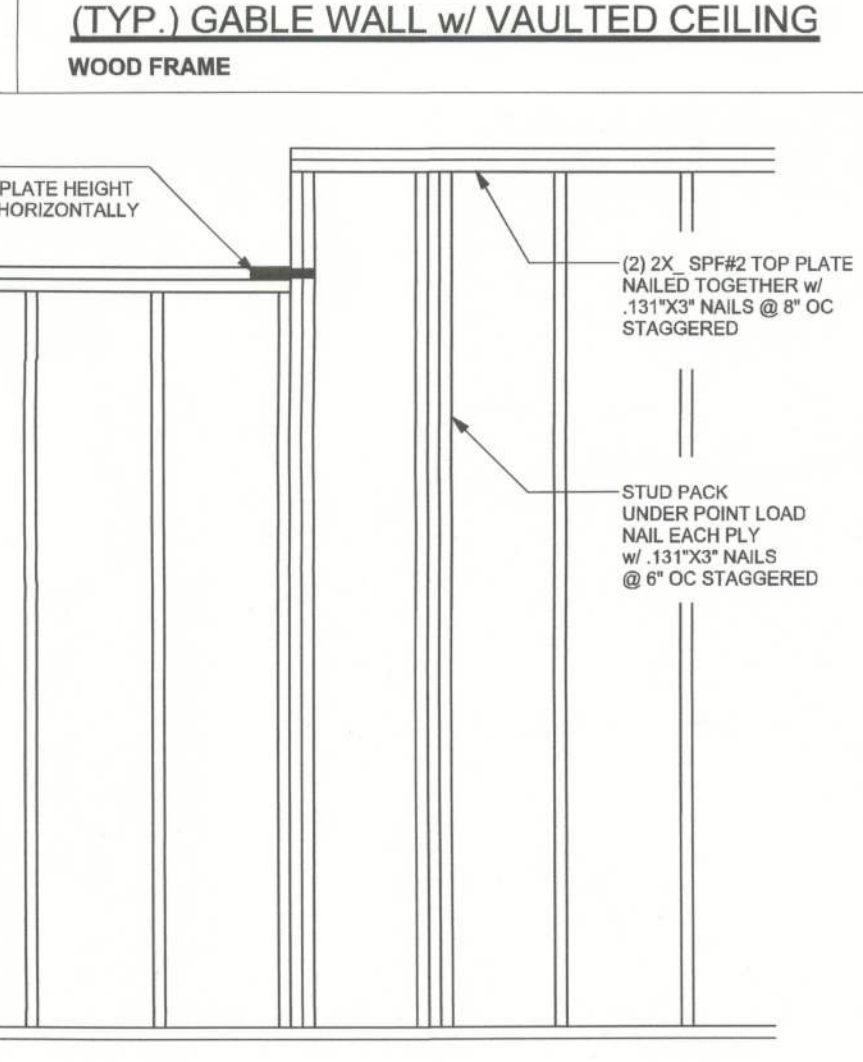
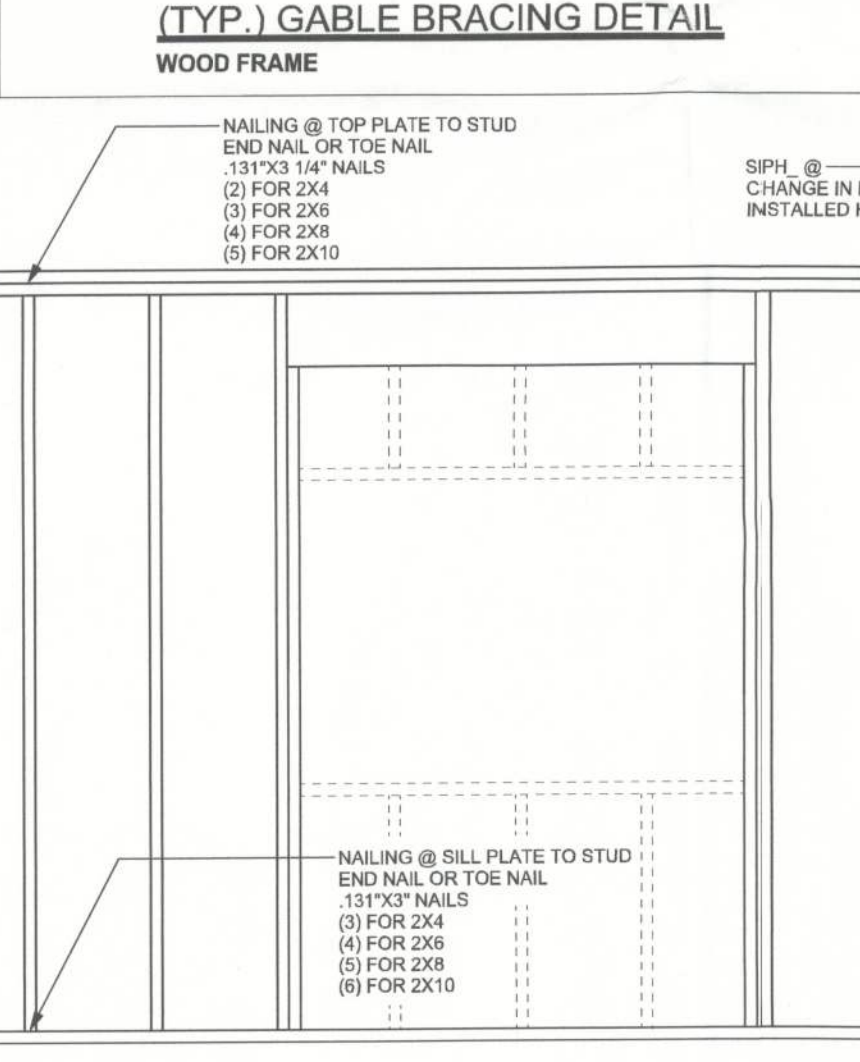
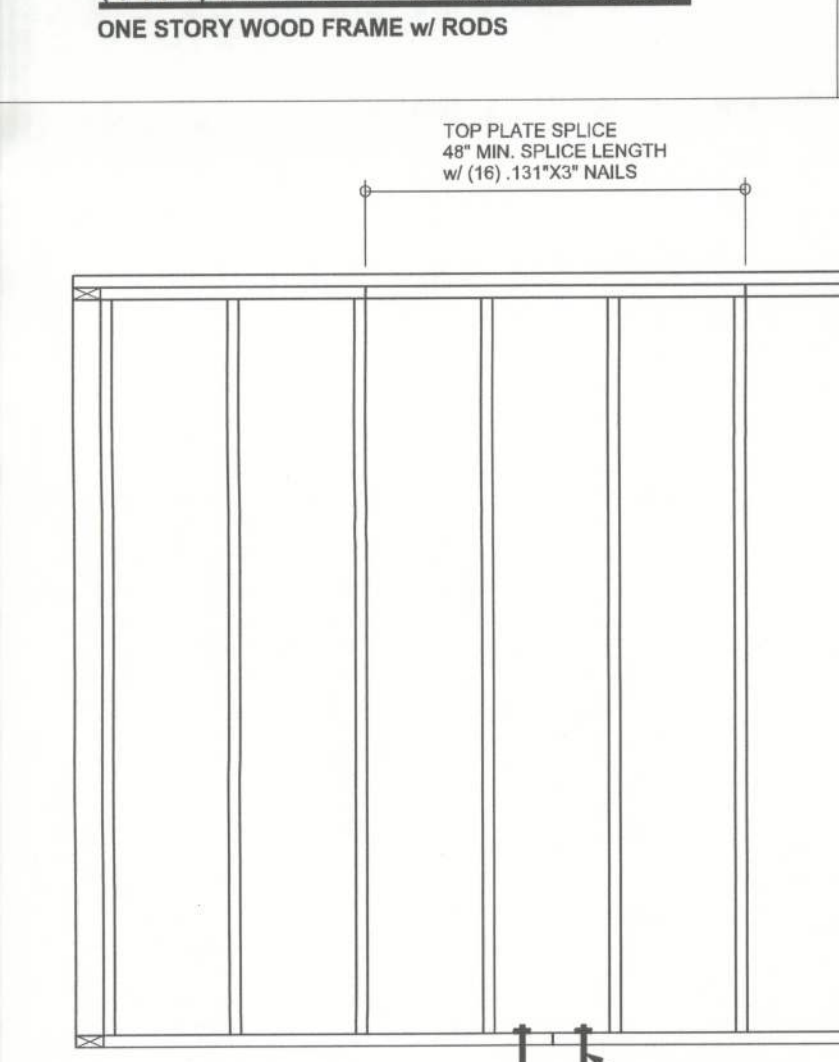
LG2	2050	1785	700	170	700	170	14-16d	14-16d
LG3-SDS2.5	3685	2655	795	410	795	410	12-SDS 1/4" x 2 1/2"	26-16dS
LG4-SDS3	4060	3960	2000	675	2000	675	12-SDS 1/4" x 3"	36-16dS
MGT	3965	3330					22-10d	5/8" ANCHOR
HST-2	10980	6485					16-10d	2-5/8" ANCHOR
HST-3	10530	9035					16-10d	2-5/8" ANCHOR
HST-4	9250	9250					16-10d	2-5/8" ANCHOR

STUD STRAP CONNECTOR

SSP DOUBLE TOP PLATE	435	435						3-10d 4-10d
SSP SINGLE SILL PLATE	455	420						1-10d 4-10d
DSP DOUBLE TOP PLATE	825	625						6-10d 8-10d
DSP SINGLE SILL PLATE	825	600						2-10d 8-10d
SP1	585	535						4-10d 6-10d
SP2	1065	605						6-10d 6-10d
SP4	885	760						6-10d x 1 1/2"
SPH4	1240	1065						10-10d x 1 1/2"
SP6	885	760						6-10d x 1 1/2"
SPH6	1240	1065						10-10d x 1 1/2"
LSTA18	1235	1110						14-10d
LSTA21	1235	1235						16-10d
CS20	1030	1030						14-10d
CS16	1705	1705						22-10d

STUD ANCHORS

LTT19	1350	1305					8-16d	1/2" ANCHOR
LTT131	2310	2310					18-10d x 1 1/2"	5/8" ANCHOR
HD2A	2775	2570					2-5/8" BOLTS	5/8" ANCHOR
HT16	4175	3685					18-16d	5/8" ANCHOR
HT22	5280	5250					32-16d	5/8" ANCHOR
ABU44	2200	2200					12-16d	5/8" ANCHOR
ABU68	2300	2300					12-16d	5/8" ANCHOR
ABU88	2320	2320					16-16d	2-5/8" ANCHOR



EXTERIOR WALL STUD TABLE FOR SPF #2 STUDS

(1) 2x4 @ 16" OC	TO 10'-1" STUD HEIGHT
(1) 2x4 @ 12" OC	TO 11'-2" STUD HEIGHT
(1) 2x6 @ 16" OC	TO 15'-7" STUD HEIGHT
(1) 2x6 @ 12" OC	TO 17'-3" STUD HEIGHT

THIS STUD HEIGHT TABLE IS PER 2012 WFCM, TABLE 3.208A. EXTERIOR LOAD BEARING & NON LOAD BEARING STUD LENGTHS FOR WALLS WITH OSB EXTERIOR AND 1/2\"/>

GRADE & SPECIES TABLE

		Fb (psi)	E (10 ⁶ psi)
2x8	SYP #2	1200	1.6
2x10	SYP #2	1050	1.6
2x12	SYP #2	975	1.6
GLB	24F-V3 SP	2400	1.8
LSL	TIMBERSTRAND	1700	1.7
LVL	MICROLAM	2900	2.0
PSL	PARALAM	2900	2.0

GENERAL NOTES:

TRUSSES: TRUSSES SHALL BE DESIGNED BY A FLORIDA LICENSED ENGINEER IN ACCORDANCE WITH THE 2010 FBCR. TRUSS ENGINEERING SHALL INCLUDE TRUSS DESIGN, PLACEMENT PLANS, TEMPORARY AND PERMANENT BRACING DETAILS, TRUSS-TO-TRUSS CONNECTIONS, AND UPLIFT AND REACTION LOADS FOR ALL BEARING LOCATIONS. TRUSS ENGINEERING IS THE RESPONSIBILITY OF THE TRUSS MANUFACTURER AND SHALL BE SIGNED & SEALED BY THE MANUFACTURER'S DESIGN ENGINEER. IT IS THE BUILDER'S RESPONSIBILITY TO VERIFY THE TRUSS DESIGNER'S FULLY SATISFIED ALL THE ABOVE REQUIREMENTS AND TO SELECT UPLIFT CONNECTIONS BASED ON TRUSS ENGINEERING UPLIFT AND PROVIDE FOOTINGS FOR INTERIOR BEARING WALLS. BUILDER IS TO FURNISH TRUSS ENGINEERING TO WIND LOAD ENGINEER FOR REVIEW OF TRUSS REACTION ON THE BUILDING STRUCTURE. STRAP 2X6 RAFTERS WITH MIN UPLIFT CONNECTION 415LB EACH END, 2X8 RAFTERS 700 LB EACH END.

SITE PREPARATION: SITE ANALYSIS AND PREPARATION IS NOT PART OF THIS PLAN.

FOUNDATION: CONFIRM THAT THE FOUNDATION DESIGN & SITE CONDITIONS MEET GRAVITY LOAD REQUIREMENTS (ASSUME 1000 PSF BEARING CAPACITY UNLESS VISUAL OBSERVATION OR SOILS TEST PROVES OTHERWISE).

CONCRETE: MINIMUM COMPRESSIVE STRENGTH OF CONCRETE AT 28 DAYS, F_c = 3000 PSI.

WELDED WIRE REINFORCED SLAB: 6\"/>

FIBER CONCRETE SLAB: CONCRETE SLABS ON GROUND CONTAINING SYNTHETIC FIBER REINFORCEMENT, FIBER LENGTH 1/2 INCH TO 2 INCHES. DOSAGE AMOUNTS FROM 0.75 TO 1.5 POUNDS PER CUBIC YARD PER THE MANUFACTURER'S RECOMMENDATIONS FOR WALLS TO COMPLY WITH ASTM C 1116. SUPPLIER TO PROVIDE ASTM C 1116 CERTIFICATION OF COMPLIANCE WHEN REQUESTED BY BUILDING OFFICIAL.

CONTROL JOINTS: WHERE SPECIFIED, SAWN CONTROL JOINTS IN SLAB-ON-GRADE SHALL BE CUT IN ACCORDANCE WITH ACI 302. JOINTS SHALL BE CUT WITHIN 12 HOURS OF SLAB PLACEMENT. THE LENGTH / WIDTH RATIOS OF SLAB AREAS SHALL NOT EXCEED 1.5 AND TYPICAL SPACING OF CUTS TO BE 12FT. DO NOT CUT WMM OR REINFORCING STEEL (RECOMMENDED LOCATION OF CONTROL JOINTS IS SUBJECT TO OWNER AND CONTRACTOR'S APPROVAL. THE CONTROL JOINTS ARE NOT INTENDED TO PREVENT CRACKS BUT RATHER TO ENCOURAGE THE SLAB TO CRACK ON A GIVEN LINE.)

REBAR: ASTM A 615, GRADE 60, DEFORMED BARS, F_y = 60 KSI, ALL LAP SPLICES 40\"/>

GLULAM BEAMS: GLB, 24F-V3SP; F_b = 2.4ksi, E = 1809ksi. UNO. SUPPLIER MAY SUPPLY AN ALTERNATE BEAM WITH EQUAL PROPERTIES OR MAY SUBMIT THEIR OWN SIZING CALCULATIONS.

ROOF SHEATHING: ALL ROOFS ARE HORIZONTAL DIAPHRAGMS; 7/16\"/>

STRUCTURAL CONNECTORS: MANUFACTURERS AND PRODUCT NUMBER FOR CONNECTORS, ANCHORS, AND REINFORCEMENT ARE LISTED FOR EXAMPLE NOT EXHAUSTIVE. AN EQUIVALENT DEVICE OF THE SAME OR OTHER MANUFACTURER CAN BE SUBSTITUTED FOR ANY DEVICES LISTED IN THE EXAMPLE TABLES AS LONG AS IT MEETS THE REQUIRED LOAD CAPACITIES. MANUFACTURER'S INSTALLATION INSTRUCTIONS MUST BE FOLLOWED TO ACHIEVE RATED LOADS.

ANCHOR BOLTS: A-307 ANCHOR BOLTS WITH MINIMUM EMBEDMENT AS SPECIFIED IN DRAWINGS BUT NO LESS THAN 7\"/>

WASHERS: WASHERS USED WITH 1/2\"/>

NAILS: ALL NAILS ARE COMMON NAILS UNLESS OTHERWISE SPECIFIED OR ACCEPTED BY FBC TEST REPORTS AS HAVING EQUAL STRUCTURAL VALUES.

BUILDER'S RESPONSIBILITY

THE BUILDER AND OWNER ARE RESPONSIBLE FOR THE FOLLOWING, WHICH ARE SPECIFICALLY NOT PART OF THE WIND LOAD ENGINEER'S SCOPE OF WORK.

CONFIRM SITE CONDITIONS, FOUNDATION BEARING CAPACITY, GRADE AND BACKFILL HEIGHT, WIND SPEED AND DERRIS ZONE, AND FLOOD ZONE.

PROVIDE MATERIALS AND CONSTRUCTION TECHNIQUES, WHICH COMPLY WITH 2010 FBCR REQUIREMENTS FOR THE STATED WIND VELOCITY AND DESIGN PRESSURES.

PROVIDE A CONTINUOUS LOAD PATH FROM TRUSSES TO FOUNDATION, IF YOU BELIEVE THE PLAN OMTS A CONTINUOUS LOAD PATH CONNECTION, CALL THE WIND LOAD ENGINEER IMMEDIATELY.

VERIFY THE TRUSS MANUFACTURER'S SEALED ENGINEERING INCLUDES TRUSS DESIGN, PLACEMENT PLANS, TEMPORARY AND PERMANENT BRACING DETAILS, TRUSS-TO-TRUSS CONNECTIONS, AND UPLIFT AND REACTION LOADS FOR ALL BEARING LOCATIONS.

ROOF SYSTEM DESIGN

THE SEAL ON THESE PLANS FOR COMPLIANCE WITH 2010 FBCR, SECTION R301.2.1 IS BASED ON REACTIONS, UPLIFTS, AND BEARING LOCATIONS IN TRUSS ENGINEERING SUBMITTED TO THE WIND LOAD ENGINEER. IT IS THE RESPONSIBILITY OF THE BUILDER TO CHECK ALL DETAILS OF THE COMPLETE ROOF SYSTEM DESIGN SUBMITTED BY THE TRUSS MANUFACTURER AND HAVE IT SIGNED, AND SEALED BY A DESIGN PROFESSIONAL FOR CORRECT APPLICATION OF 2010 FBCR REQUIRED LOADS AND ANY SPECIAL LOADS. THE BUILDER IS RESPONSIBLE TO REVIEW EACH INDIVIDUAL TRUSS MEMBER AND THE TRUSS ROOF SYSTEM AS A WHOLE AND TO PROVIDE RESTRAINT FOR ANY LATERAL BRACING. THE BUILDER SHOULD USE CARE CHECKING THE ROOF DESIGN BECAUSE THE WIND LOAD ENGINEER IS SPECIFICALLY NOT RESPONSIBLE FOR THE TRUSS LAYOUT WHICH WAS CREATED BY THE TRUSS MANUFACTURER AND THE TRUSS DESIGNER ALSO DENIES RESPONSIBILITY FOR THE LAYOUT PER NOTES ON THEIR SEALED TRUSS SHEETS.

DESIGN DATA

WIND LOADS PER 2010 FLORIDA BUILDING CODE RESIDENTIAL, SECTION R301.2.1

(ENCLOSED SIMPLE DIAPHRAGM BUILDINGS WITH FLAT, HIPPED, OR GABLE ROOF MEAN ROOF HEIGHT)

BUILDING IS NOT IN THE HIGH VELOCITY HURRICANE ZONE

BUILDING IS NOT IN THE WIND-BORNE DEBRIS REGION

1.) BASIC WIND SPEED = 130 MPH, (3 SEC GUST, 33 FT, EXP. C)

2.) WIND EXPOSURE = C, BUILDER MUST FIELD VERIFY

3.) TOPOGRAPHIC FACTOR = 1.0, BUILDER MUST FIELD VERIFY

4.) BUILDING CATEGORY = II, (MRI = 700 YR)

5.) ROOF ANGLE = 7-45 DEGREES

6.) MEAN ROOF HEIGHT = <30 FT

7.) INTERNAL PRESSURE COEFFICIENT = N/A (ENCLOSED BUILDING)

8.) COMPONENTS AND CLADDING DESIGN WIND PRESSURES (TABLE R301.2(2))

Zone	Effective Wind Area (ft ²)
1	10
2	39
3	43
4	68
5	39
6	100
7	43
8	46
9	57

Garage Door		
2010 FBCR, Table R301.2.4(1)		
8x7 Garage Door	37	42
16x7 Garage Door	36	40

DESIGN LOADS

FLOOR 40 PSF (ALL OTHER DWELLING ROOMS)

30 PSF (SLEEPING ROOMS)

30 PSF (ATTICS WITH STORAGE)

10 PSF (ATTICS WITHOUT STORAGE, <3-12)

ROOF 20 PSF (FLAT OR <4:12)

16 PSF (4:12 TO <12:12)

12 PSF (12:12 AND GREATER)

STAIRS 40 PSF (ONE & TWO FAMILY DWELLINGS)

SOIL BEARING CAPACITY 100PSF

NOT IN FLOOD ZONE (BUILDER TO VERIFY)