

ARRAY DESCRIPTION					
ROOF	# OF MODULES	AZIMUTH	TRUSS SIZE	TRUSS SPACING	ROOF MATERIAL
#1	23	178°	2X4	24" O.C.	METAL ROOF

DESIGN SPECIFICATION	
RISK CATEGORY	II
CONSTRUCTION	SFD
ZONING	RESIDENTIAL
SNOW LOAD (ASCE 7-16)	0 PSF
EXPOSURE CATEGORY	B
WIND SPEED (ASCE 7-16)	120 MPH

### LEGEND

(E) - EXISTING  
(N) - NEW

BACK OF RESIDENCE



2'-6"

~~3'-2'~~

(N) UNIRAC RAIL SM

(N) S5! PROTEA BRACKET @ 30" O.C.

- 44'-9"

FRONT OF RESIDENCE  
SOUTHEAST OAK STREET



2022.10.21

11:15:50 -04'00'

THIS ITEM HAS BEEN DIGITALLY SIGNED AND SEALED BY OMAR  
TIRADO ON THE DATE ADJACENT TO THE SEAL. PRINTED COPIES  
OF THIS DOCUMENT ARE NOT CONSIDERED SIGNED AND SEAL, AND  
THE SIGNATURE MUST BE VERIFIED ON ANY ELECTRONIC COPIES

•

S-0

## | ROOF PLAN AND MODULES

SCALE: NTS



**ATLANTIC KEY ENERGY LLC**  
7006 STAPOINT CT  
STE B  
WINTER PARK, FL 32792  
+1 (407) 988-0273

PROJECT NAME & ADDRESS

FRANCIS LEWIS  
RESIDENCE  
293 SOUTHEAST OAK STREET  
LAKE CITY, FL 32025

SIGNATURE WITH SEAL

REVISIONS		
DESCRIPTION	DATE	REV

Drawn by: A.A

Checked by:	O.T
-------------	-----

Date: 10/20/21

SHEET NAME

## ROOF PLAN AND MODULES

SHEET NUMBER

S-0

# S-5!®

## The Right Way!™

NEW

NOW AVAILABLE  
IN ALUMINUM

ProteaBracket™

### ProteaBracket™

A versatile bracket for  
mounting solar PV to  
trapezoidal roof profiles

ProteaBracket™ is now made in aluminum. Still the most versatile trapezoidal metal roof attachment solution on the market, the S-5! ProteaBracket just got better!

The bracket features an adjustable attachment base and module attachment options to accommodate different roof profile dimensions and mounting options.

Our pre-applied EPDM gasket with peel and stick adhesive makes installation a snap, ensuring accurate and secure placement the first time.

With no messy sealants, faster installation, and a weather-proof fit, ProteaBracket offers you the most versatile solar attachment solution available.

ProteaBracket\* can be used for  
rail mounting or "direct-attach"  
with S-5! PVKIT™

### Features and Benefits

- 34% lighter - saves on shipping
- Stronger L-Foot™
- Load-tested for engineered application
- Corrosion-resistant materials
- Adjustable - Fits rib profiles up to 3"
- Peel-and-Stick prevents accidental shifting during installation
- Fully pre-assembled
- 25-year warranty\*

\*When ProteaBracket is used in conjunction with the S-5! PVKIT, an additional nut is required during installation.

\*See [www.S-5.com](http://www.S-5.com) for details.



888-825-3432 | [www.S-5.com](http://www.S-5.com)

# S-5!®

The Right Way!™

ProteaBracket™ is the perfect solar attachment solution for most trapezoidal rib, exposed-fastened metal roof profiles!

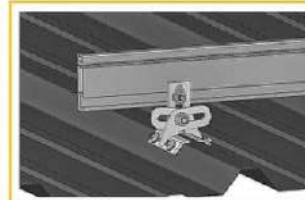
ProteaBracket™ is compatible with common metal roofing materials and comes with a pre-applied EPDM gasket on the base.

**Note:** All four pre-punched holes must be used to achieve tested strength. Fasteners are provided.

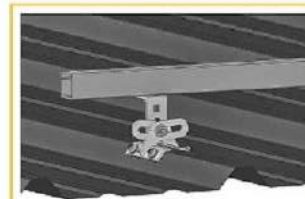
For design assistance, ask your distributor, or visit [www.S-5.com](http://www.S-5.com) for the independent lab test data that can be used for load-critical designs and applications. Also, please visit our website for more information including metallurgical compatibilities and specifications.

S-5!® holding strength is unmatched in the industry.

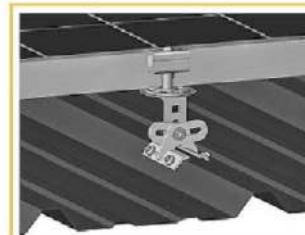
### Multiple Attachment Options:



Side  
Mount Rail



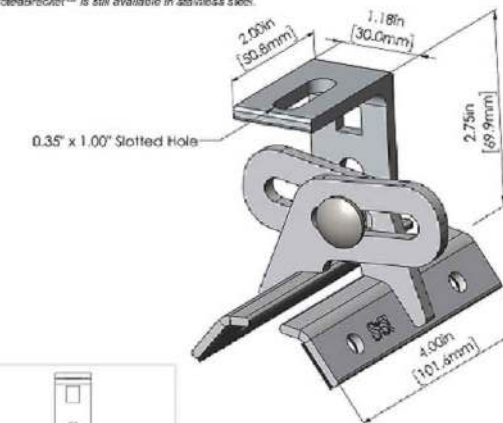
Bottom  
Mount Rail



w/ S-5!  
PVKIT™  
(rail-less)

### ProteaBracket™

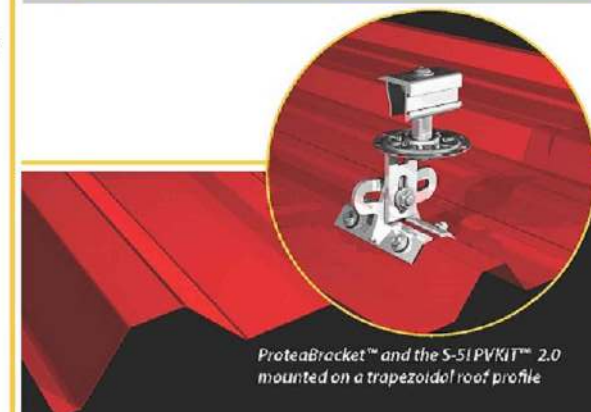
ProteaBracket™ is still available in stainless steel.



ProteaBracket fits profiles  
up to 3 inches

INSTALLATION:

No surface preparation needed. (1) Wipe away excess oil and debris. (2) Peel off adhesive release paper. (3) Align and mount bracket directly onto crown of panel. (4) Secure ProteaBracket through pre-punched holes, using piercing-point S-5! screws.



ProteaBracket™ and the S-5! PVKIT™ 2.0  
mounted on a trapezoidal roof profile

S-5!® Warning! Please use this product responsibly!

Products are protected by multiple U.S. and foreign patents. For published data regarding holding strength, bolt torque, patents, and trademarks, visit the S-5! website at [www.S-5.com](http://www.S-5.com).

Copyright 2019, Metal Roof Innovations, Ltd. S-5! products are patent protected. S-5! aggressively protects its patents, trademarks, and copyrights. Version 07080.

Distributed by



ATLANTIC KEY ENERGY LLC  
7006 STAPPOINT CT  
STE B  
WINTER PARK, FL 32792  
+1 (407) 988-0273

PROJECT NAME & ADDRESS

FRANCIS LEWIS  
RESIDENCE  
293 SOUTHEAST OAK STREET  
LAKE CITY, FL 32025

SIGNATURE WITH SEAL

### REVISIONS

DESCRIPTION	DATE	REV

Drawn by: A.A.

Checked by: O.T.

Date: 10/20/22

SHEET NAME

EQUIPMENT  
SPECIFICATIONS

SHEET NUMBER

S-1

# SOLARMOUNT



**SOLARMOUNT** defined the standard in solar racking. Features are designed to get installers off the roof faster. Our grounding & bonding process eliminates copper wire and grounding straps to reduce costs. Systems can be configured with standard or light rail to meet your design requirements at the lowest cost possible. The superior aesthetics package provides a streamlined clean edge for enhanced curb appeal, with no special brackets required for installation.



Now Featuring:  
**THE NEW FACE OF SOLAR RACKING**  
Superior Aesthetics Package



**LOSE ALL OF THE COPPER & LUGS**  
System grounding through Enphase microinverters and trunk cables



**SMALL IS THE NEXT NEW BIG THING**  
Light Rail is Fully Compatible with all SM Components



**ENHANCED DESIGN & LAYOUT TOOLS**  
Featuring Google Map Capabilities within U-Builder

## FAST INSTALLATION. SUPERIOR AESTHETICS

OPTIMIZED COMPONENTS • VERSATILITY • DESIGN TOOLS • QUALITY PROVIDER

# SOLARMOUNT



### OPTIMIZED COMPONENTS

#### INTEGRATED BONDING & PRE-ASSEMBLED PARTS

Components are pre-assembled and optimized to reduce installation steps and save labor time. Our new grounding & bonding process eliminates copper wire and grounding straps or bonding jumpers to reduce costs. Utilize the microinverter mount with a wire management clip for an easier installation.

### VERSATILITY

#### ONE PRODUCT - MANY APPLICATIONS

Quickly set modules flush to the roof or at a desired tilt angle. Change module orientation to portrait or landscape while securing a large variety of framed modules on flat, low slope or steep pitched roofs. Available in mill, clear and dark anodized finishes to outperform your projects financial and aesthetic aspirations.

### AUTOMATED DESIGN TOOL

#### DESIGN PLATFORM AT YOUR SERVICE

Creating a bill of materials is just a few clicks away with U-Builder, a powerful online tool that streamlines the process of designing a code compliant solar mounting system. Save time by creating a user profile, and recall preferences and projects automatically when you login. You will enjoy the ability to share projects with customers; there's no need to print results and send to a distributor, just click and share.



### UNIRAC CUSTOMER SERVICE MEANS THE HIGHEST LEVEL OF PRODUCT SUPPORT

UNMATCHED EXPERIENCE

CERTIFIED QUALITY

ENGINEERING EXCELLENCE

BANKABLE WARRANTY

DESIGN TOOLS

PERMIT DOCUMENTATION

#### TECHNICAL SUPPORT

Unirac's technical support team is dedicated to answering questions & addressing issues in real time. An online library of documents including engineering reports, stamped letters and technical data sheets greatly simplifies your permitting and project planning process.

#### CERTIFIED QUALITY PROVIDER

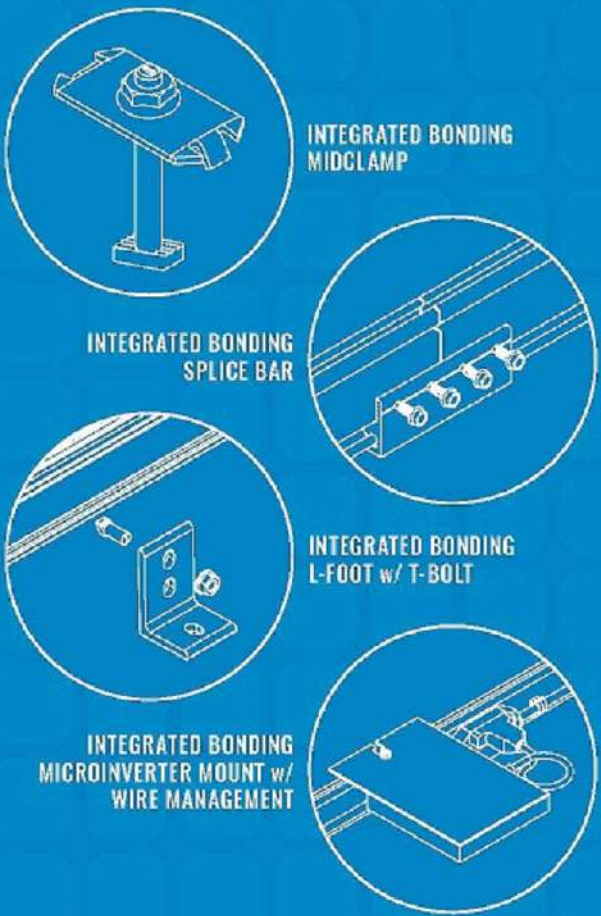
Unirac is the only PV mounting vendor with ISO certifications for 9001:2015, 14001:2015 and OHSAS 18001:2007, which means we deliver the highest standards for fit, form, and function. These certifications demonstrate our excellence and commitment to first class business practices.

#### BANKABLE WARRANTY

Don't leave your project to chance. Unirac has the financial strength to back our products and reduce your risk. Have peace of mind knowing you are receiving products of exceptional quality. SOLARMOUNT is covered by a twenty five (25) year limited product warranty and a five (5) year limited finish warranty.

PROTECT YOUR REPUTATION WITH QUALITY RACKING SOLUTIONS BACKED BY ENGINEERING EXCELLENCE AND A SUPERIOR SUPPLY CHAIN

PLEB0000228 - REV 1/1/17



ATLANTIC KEY ENERGY LLC  
7006 STAPPOINT CT  
STE B  
WINTER PARK, FL 32792  
+1 (407) 988-0273

PROJECT NAME & ADDRESS

FRANCIS LEWIS  
RESIDENCE  
293 SOUTHEAST OAK STREET  
LAKE CITY, FL 32025

SIGNATURE WITH SEAL

#### REVISIONS

DESCRIPTION	DATE	REV

Drawn by: A.A.

Checked by: O.T.

Date: 10/20/22

#### SHEET NAME

EQUIPMENT  
SPECIFICATIONS

#### SHEET NUMBER

S-2