

ROBIN BUILDERS, INC.

LYONS, GEORGIA

NOT APPROVED FOR HVHZ

GENERAL NOTES:

1.

BUILDINGS ARE APPROVED FOR RESIDENTIAL LAWN STORAGE ONLY.
2.

IN ACCORDANCE WITH FLORIDA STATUTE 553.80 (1) d, LAWN STORAGE BUILDINGS AND STORAGE SHEDS BEARING THE INSIGNIA OF APPROVAL FROM THE DEPARTMENT ARE NOT SUBJECT TO s. 553.842 (FLORIDA PRODUCT APPROVALS) BUT SHALL MEET THE DESIGN WIND LOAD REQUIREMENTS OF THE 2023 FBC 8TH EDITION.
3.

IN ACCORDANCE WITH FBC 1609.1.2 (3) AND FBC SECTION 1626.1 EXCEPTION (F): STORAGE SHEDS THAT ARE NOT DESIGNED FOR HUMAN HABITATION AND THAT HAVE A FLOOR AREA OF LESS THAN 720 SQUARE FEET OR LESS ARE NOT REQUIRED TO COMPLY WITH THE MANDATORY WINDBORNE DEBRIS IMPACT STANDARDS OF THE CODE.
4.

IN ACCORDANCE WITH FBC 1010.1.1, EXCEPTION (10.) BUILDINGS THAT ARE 400 SQUARE FEET OR LESS AND THAT ARE INTENDED FOR USE IN CONJUNCTION WITH ONE- AND TWO-FAMILY RESIDENCES ARE NOT SUBJECT TO THE DOOR HEIGHT AND WIDTH REQUIREMENTS OF THIS CODE.
5.

THIS BUILDING IS EXEMPT FROM THE FECC PER SECTIONS R101.4.2.4, R402.1 EXCEPTION 1.2
6.

IN ACCORDANCE WITH FLORIDA ADMINISTRATIVE CODE RULE 61-41.009. PHOTOCOPIES OF APPROVED PLANS SHALL BE SUFFICIENT FOR LOCAL PERMIT APPLICATION DOCUMENTS OF RECORD FOR THE MODULAR BUILDING PORTION OF THE PERMITTED PROJECT.
7.

IN ACCORDANCE WITH FBC 107.3, EXCEPTION (1), BUILDING PLANS APPROVED PURSUANT TO SECTION 553.77(5) FLORIDA STATUTES, AND STATE-APPROVED MANUFACTURED BUILDINGS ARE EXEMPT FROM LOCAL CODES ENFORCING AGENCY PLAN REVIEWS EXCEPT FOR PROVISIONS OF THE CODE RELATING TO ERECTION, ASSEMBLY, OR CONSTRUCTION AT THE SITE. ERECTION, ASSEMBLY, AND CONSTRUCTION AT THE SITE ARE SUBJECT TO LOCAL PERMITTING AND INSPECTIONS.
8.

ALL WINDOWS AND DOORS SHALL MEET THE MINIMUM SPECIFICATIONS PER THE APPROVED PLANS AND THE 2023 FBC, 8TH EDITION.
9.

COMPONENTS/CLADDING SHALL BE IN COMPLIANCE WITH THE 2023 FBC 8TH EDITION.
10.

FLAT METAL STRAPS CAN BE BENT AROUND STRUCTURAL MEMBERS, WALL STUDS, TRUSSES, CHORDS, ETC. TO HELP SECURE THESE MEMBERS, PROVIDED THAT THE ADDED BEND DOES NOT INTERFERE WITH ANY OF THE EXISTING BREAKS/BENDS IN THE STRAP.
11.

HVHZ COMPONENTS UTILIZED FOR SHEDS REQUIRE THAT INSTALLATION SHALL BE PER MANUFACTURER'S INSTRUCTIONS.
12.

FOUNDATION PLANS ARE NOT PART OF THIS PLAN SET AND ARE GOVERNED BY LOCAL JURISDICTION.
13.

REFER TO TIE DOWN DETAILS FOR PROPER INSTALLATION REQUIREMENTS TO MEET CODE.
14.

GUTTERS SHALL BE SITE INSTALLED AND SHALL BE APPROVED BY THE AUTHORITY HAVING JURISDICTION AND SHALL COMPLY WITH LOCAL REQUIREMENTS FOR PERMITTING.
15.

SHEDS LOCATED IN FLOOD HAZARD AREAS MUST COMPLY WITH THE LOCAL FLOOD ZONE REGULATIONS.
16.

IF A WALL IS FRAMED FOR FUTURE HVAC UNITS, UNIT INSTALLATION SHALL BE APPROVED BY THE AUTHORITY HAVING JURISDICTION AND SHALL COMPLY WITH LOCAL REQUIREMENTS FOR PERMITTING.
17.

WINDOWS AND DOORS INSTALLED BY THE CUSTOMER SHALL BE APPROVED BY THE AUTHORITY HAVING JURISDICTION AND SHALL COMPLY WITH LOCAL REQUIREMENTS FOR PERMITTING.
18.

FLOOD VENTS, IF REQUIRED, TO BE INSTALLED ON SITE BY OTHERS

2024-01-18 TOP LINE ENGINEERING, LLC APPROVAL

Building Code

Building Type

Manufacturer

Agency

Agency Plan Number

Construction Type

Fire Protection

Fire Suppression System

Occupancy

Allowable # of Stories

Building Risk Category

Partially Enclosed

Wind Velocity

Fire Rating of Exterior Walls

Floor Live Load/Dead Load

Roof Live Load/Dead Load

"R" Rating of Floor, Walls, Roof

Modules per Building

Square Footage

HVHZ Approved

2023 FBC, 8th Edition
ASCE 7-22

2020 National Electric
Code(NFPA-70)

Residential Lawn Storage
Shed

Robin Builders, Inc.

Lyons, Ga

Top Line Engineering, LLC

23FBCAGV

V-B

B

NO

Utility

1

1

160 mph Exposure C

0 hour

75 psf, 5 psf

20 psf, 8 psf

R-0, R-0, R-0

1

719 sq-ft

No



SHEET LIST

- Sheet 1

Cover sheet
- Sheet 2

Floor details
- Sheet 3

Splicing details
- Sheet 4

Framing details Americana
- Sheet 5

Framing details Floridian
- Sheet 6

Framing details Gambrel
- Sheet 7

Framing details Steel Gambrel
- Sheet 8

Framing details: Steel option
- Sheet 9

Framing details: Porch option
- Sheet 10

Framing details: Steel Monoslope
- Sheet 11

Framing details: Wood Monoslope
- Sheet 12

Electrical and optional details
- Sheet 13

Framing details: Steel porch
- Sheet 14

Door details
- Sheet 15

Bill of materials

TOP LINE ENGINEERING, LLC
STRUCTURAL ENGINEERS
William E. Neary, III
SMP-51, SMI-79, ICC 5185040
10649 Oakview Pointe Terrace
Gotha, Florida 34734

Kenneth E. Vogan, P.E.
1170 Sunnerfield Dr.
Cunning, GA 30040
kvogan@bellsouth.net

Please note: Any questions regarding local permitting should be directed to the Manufacturer. The Manufacturer's contact information can be found in the title block of the plans.

General Notes

--	--	--	--	--	--	--	--	--	--	--	--	--	--	--	--	--	--	--	--	--	--	--	--	--	--	--	--	--	--	--	--	--	--	--	--	--	--	--	--	--	--	--	--	--	--	--	--	--	--	--	--	--	--	--	--	--	--	--	--	--	--	--	--	--	--	--	--	--	--	--	--	--	--	--	--	--	--	--	--	--	--	--	--	--	--	--	--	--	--	--	--	--	--	--	--	--	--	--	--	--	--	--	--	--	--	--	--	--	--	--	--	--	--	--	--	--	--	--	--	--	--	--	--	--	--	--	--	--	--	--	--	--	--	--	--	--	--	--	--	--	--	--	--	--	--	--	--	--	--	--	--	--	--	--	--	--	--	--	--	--	--	--	--	--	--	--	--	--	--	--	--	--	--	--	--	--	--	--	--	--	--	--	--	--	--	--	--	--	--	--	--	--	--	--	--	--	--	--	--	--	--	--	--	--	--	--	--	--	--	--	--	--	--	--	--	--	--	--	--	--	--	--	--	--	--	--	--	--	--	--	--	--	--	--	--	--	--	--	--	--	--	--	--	--	--	--	--	--	--	--	--	--	--	--	--	--	--	--	--	--	--	--	--	--	--	--	--	--	--	--	--	--	--	--	--	--	--	--	--	--	--	--	--	--	--	--	--	--	--	--	--	--	--	--	--	--	--	--	--	--	--	--	--	--	--	--	--	--	--	--	--	--	--	--	--	--	--	--	--	--	--	--	--	--	--	--	--	--	--	--	--	--	--	--	--	--	--	--	--	--	--	--	--	--	--	--	--	--	--	--	--	--	--	--	--	--	--	--	--	--	--	--	--	--	--	--	--	--	--	--	--	--	--	--	--	--	--	--	--	--	--	--	--	--	--	--	--	--	--	--	--	--	--	--	--	--	--	--	--	--	--	--	--	--	--	--	--	--	--	--	--	--	--	--	--	--	--	--	--	--	--	--	--	--	--	--	--	--	--	--	--	--	--	--	--	--	--	--	--	--	--	--	--	--	--	--	--	--	--	--	--	--	--	--	--	--	--	--	--	--	--	--	--	--	--	--	--	--	--	--	--	--	--	--	--	--	--	--	--	--	--	--	--	--	--	--	--	--	--	--	--	--	--	--	--	--	--	--	--	--	--	--	--	--	--	--	--	--	--	--	--	--	--	--	--	--	--	--	--	--	--	--	--	--	--	--	--	--	--	--	--	--	--	--	--	--	--	--	--	--	--	--	--	--	--	--	--	--	--	--	--	--	--	--	--	--	--	--	--	--	--	--	--	--	--	--	--	--	--	--	--	--	--	--	--	--	--	--	--	--	--	--	--	--	--	--	--	--	--	--	--	--	--	--	--	--	--	--	--	--	--	--	--	--	--	--	--	--	--	--	--	--	--	--	--	--	--	--	--	--	--	--	--	--	--	--	--	--	--	--	--	--	--	--	--	--	--	--	--	--	--	--	--	--	--	--	--	--	--	--	--	--	--	--	--	--	--	--	--	--	--	--	--	--	--	--	--	--	--	--	--	--	--	--	--	--	--	--	--	--	--	--	--	--	--	--	--	--	--	--	--	--	--	--	--	--	--	--	--	--	--	--	--	--	--	--	--	--	--	--	--	--	--	--	--	--	--	--	--	--	--	--	--	--	--	--	--	--	--	--	--	--	--	--	--	--	--	--	--	--	--	--	--	--	--	--	--	--	--	--	--	--	--	--	--	--	--	--	--	--	--	--	--	--	--	--	--	--	--	--	--	--	--	--	--	--	--	--	--	--	--	--	--	--	--	--	--	--	--	--	--	--	--	--	--	--	--	--	--	--	--	--	--	--	--	--	--	--	--	--	--	--	--	--	--	--	--	--	--	--	--	--	--	--	--	--	--	--	--	--	--	--	--	--	--	--	--	--	--	--	--	--	--	--	--	--	--	--	--	--	--	--	--	--	--	--	--	--	--	--	--	--	--	--	--	--	--	--	--	--	--	--	--	--	--	--	--	--	--	--	--	--	--	--	--	--	--	--	--	--	--	--	--	--	--	--	--	--	--	--	--	--	--	--	--	--	--	--	--	--	--	--	--	--	--	--	--	--	--	--	--	--	--	--	--	--	--	--	--	--	--	--	--	--	--	--	--	--	--	--	--	--	--	--	--	--	--	--	--	--	--	--	--	--	--	--	--	--	--	--	--	--	--	--	--	--	--	--	--	--	--	--	--	--	--	--	--	--	--	--	--	--	--	--	--	--	--	--	--	--	--	--	--	--	--	--	--	--	--	--	--	--	--	--	--	--	--	--	--	--	--	--	--	--	--	--	--	--	--	--	--	--	--	--	--	--	--	--	--	--	--	--	--	--	--	--	--	--	--	--	--	--	--	--	--	--	--	--	--	--	--	--	--	--	--	--	--	--	--	--	--	--	--	--	--	--	--	--	--	--	--	--	--	--	--	--	--	--	--	--	--	--	--	--	--	--	--	--	--	--	--	--	--	--	--	--	--	--	--	--	--	--	--	--	--	--	--	--	--	--	--	--	--	--	--	--	--	--	--	--	--	--	--	--	--	--	--	--	--	--	--	--	--	--	--	--	--	--	--	--	--	--	--	--	--	--	--	--	--	--	--	--	--	--	--	--	--	--	--	--	--	--	--	--	--	--	--	--	--	--	--	--	--	--	--	--	--	--	--	--	--	--	--	--	--	--	--	--	--	--	--	--	--	--	--	--	--	--	--	--	--	--	--	--	--	--	--	--	--	--	--	--	--	--	--	--	--	--	--	--	--	--	--	--	--	--	--	--	--	--	--	--	--	--	--	--	--	--	--	--	--	--	--	--	--	--	--	--	--	--	--	--	--	--	--	--	--	--	--	--	--	--	--	--	--	--	--	--	--	--	--	--	--	--	--	--	--	--	--	--	--	--	--	--	--	--	--	--	--	--	--	--	--	--	--	--	--	--	--	--	--	--	--	--	--	--	--	--	--	--	--	--	--	--	--	--	--	--	--	--	--	--	--	--	--	--	--	--	--	--	--	--	--	--	--	--	--	--	--	--	--	--	--	--	--	--	--	--	--	--	--	--	--	--	--	--	--	--	--	--	--	--	--	--	--	--	--	--	--	--	--	--	--	--	--	--	--	--	--	--	--	--	--	--	--	--	--	--

Firm Name and Address
ROBIN BUILDERS, INC.
3771 GA HIWAY 130E
LYONS, GA 30436
912-526-3266

Project Name and Address
COVER SHEET
23FBCAGV

Project	23FBCAGV	Sheet	
Date	10/1/23		1 of 15
Scale	NONE		

FLOOR FRAMING

TOP LINE ENGINEERING, LLC

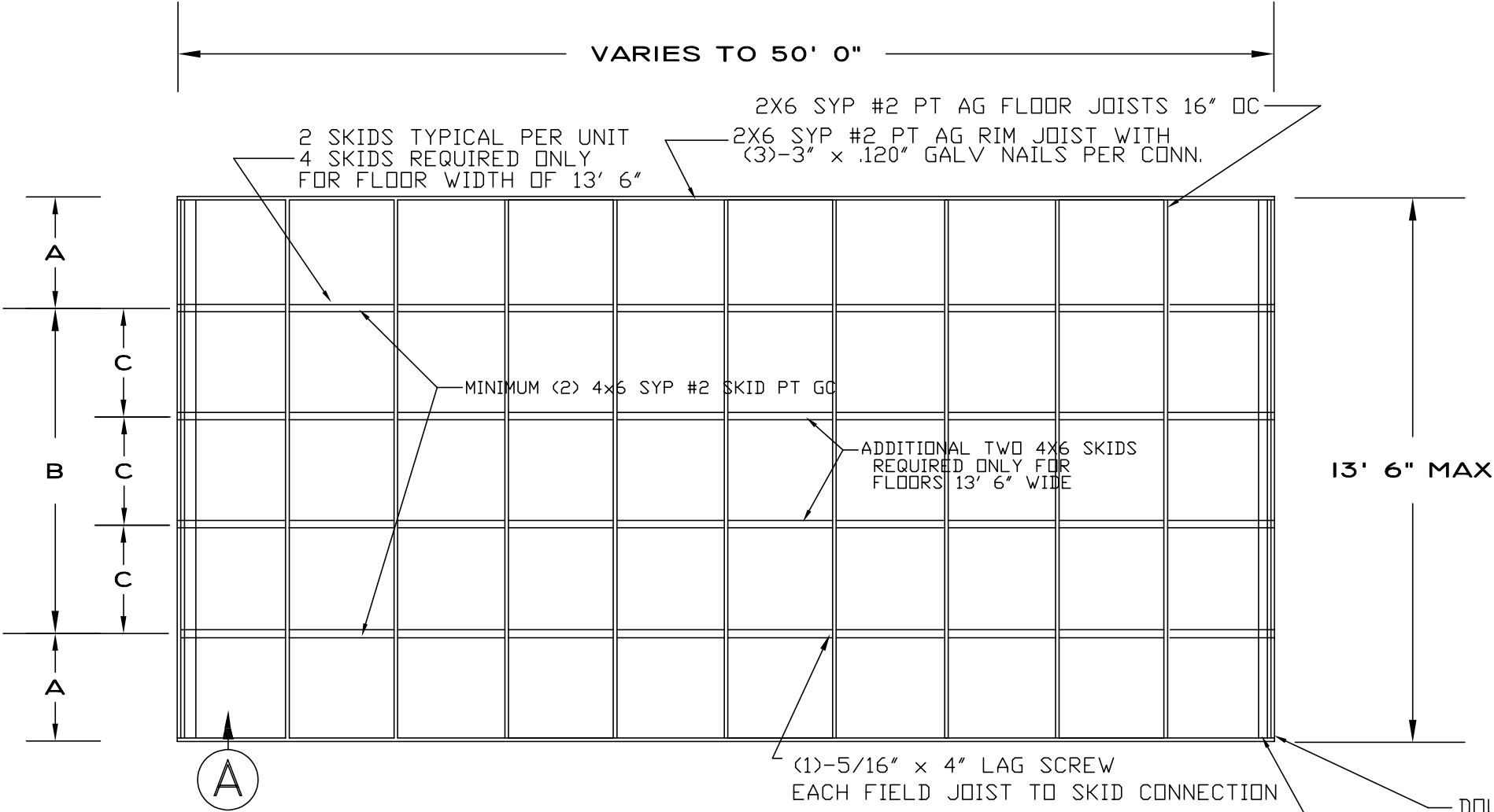
STRUCTURAL ENGINEERS

William E. Neary, III

SMP-51, SMI-79, ICC 5185040

10649 Oakview Pointe Terrace

Gotha, Florida 34734



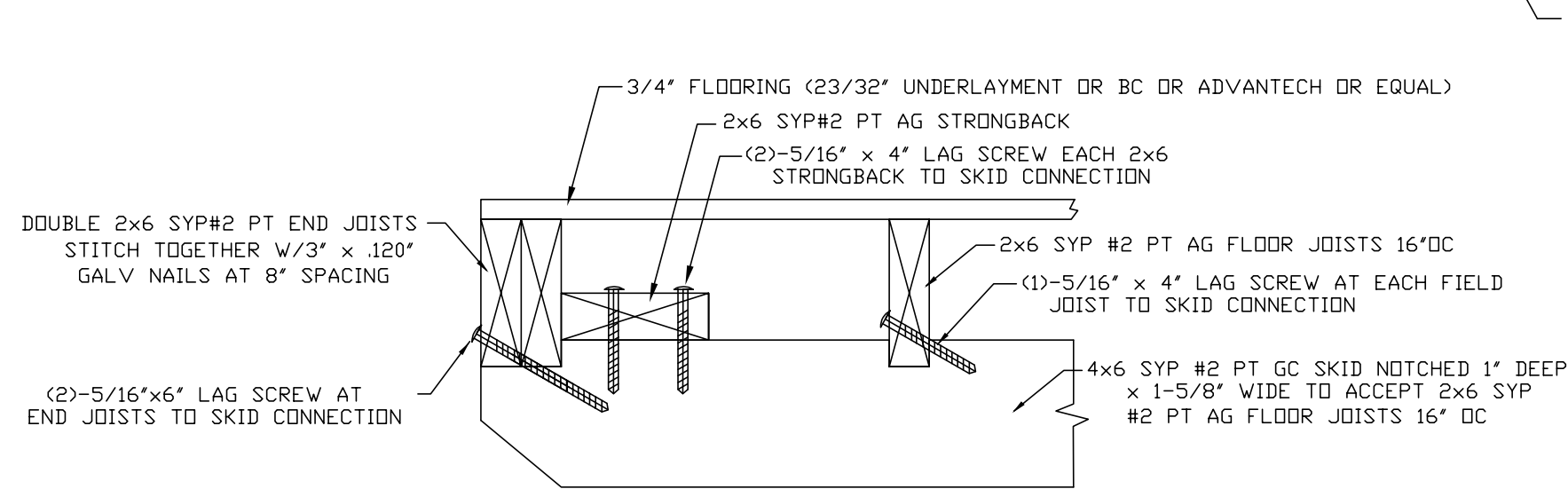
TYPICAL FLOOR FRAMING
N.T.S.

FLOORING TO SPAN PERPENDICULAR
ACROSS FLOOR JOISTS

FLOORING TO BE 23/32" UNDERLAYMENT
GRADE OR 18MM BC GRADE PLYWOOD
(UNTREATED OR PRESSURE TREATED)
OR 23/32" ADVANTECH OR EQUAL

FLOORING TO TO BE SQUARE EDGE W/
2x4 SYP PT MIN BLOCKING AT ALL
SEAMS OR TONGUE & GROOVE EDGE
WITHOUT BLOCKING AT SEAMS

FLOORING FASTENED WITH #8 x 2.25"
COATED SCREWS 6" OC ALONG
EDGE OF SHEETS, 12" OC IN FIELD



FLOOR DETAIL A
N.T.S.

DOUBLE JOISTS 2x6 #2 SYP PT EACH
END OF BUILDING & ATTACH TO SKIDS
W/(2)-5/16"x6" LAG SCREW AT EACH
SKID TO DOUBLE HEADER CONNECTION

2x6 #2 SYP PT STRONGBACK BEHIND
DOUBLE JOISTS EA END OF BUILDING ATTACH
TO EACH SKID WITH (2)-5/16" X 4" LAG SCREW

4x6 SKID SPACING					
UNIT WIDTH	5'10"	7'10"	9'10"	11'6"	13'6"
FLOOR JOIST # OF SKIDS	2x6 2	2x6 2	2x6 2	2x6 2	2x6 4
"A"	16"	18"	18"	24.5"	12"
"B"	40"	60"	82"	84"	138"
"C"	n/a	n/a	n/a	n/a	46"

2x6 FLOOR JOISTS AT 16" OC WILL SUPPORT
75 PSF LIVE & DEAD LOAD FLOOR LOADING

General Notes

ROBIN BUILDERS, INC

3771 Ga Highway 130 E
LYONS, GA 30436
(912) 526-3266

Kenneth E. Vogan P. E.

Florida License No. 53439

CONSTRUCTION TYPE

VB

UTILITY

1

160

FIRE RATING EXT. WALL:

0

PLAN NO:

FBC 2023 8th ED

ALLOW. FLOOR LOAD:

75

APPROVAL DATE:

10/1/2023

No.

Revision/Issue

Date

Firm Name and Address

ROBIN BUILDERS, INC.
3771 GA HIWAY 130E
LYONS, GA 30436
912-526-3266

Project Name and Address

FLOOR DETAILS
23FBCAGV

Project

23FBCAGV

Date

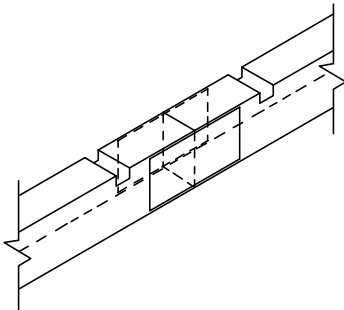
10/1/23

Scale

NONE

Sheet

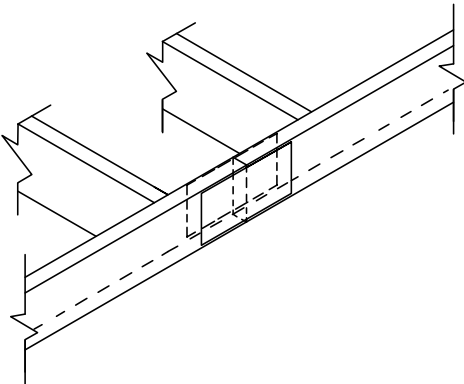
2 of 15



TYPICAL SKID SPLICING DETAIL

5" x 10" 0.045" GALV TRUSS PLATE
CH18 BY CH MACHINE OR EAGLE OR
EQUAL ON EACH WIDE FACE OF 4x6
BUTT JOINT, PLATES HYDRAULICALLY
IMBEDDED INTO MEMBERS

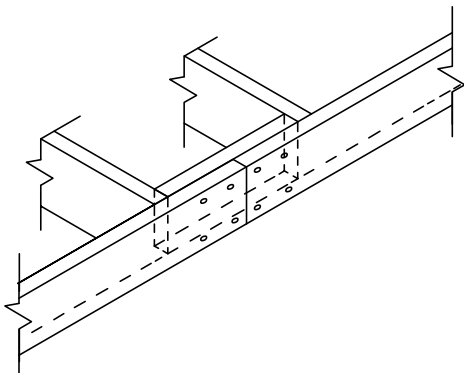
TYPICAL SKID SPLICE DETAIL
N.T.S.



TYPICAL FLOOR RIM JOIST
SPLICING DETAIL

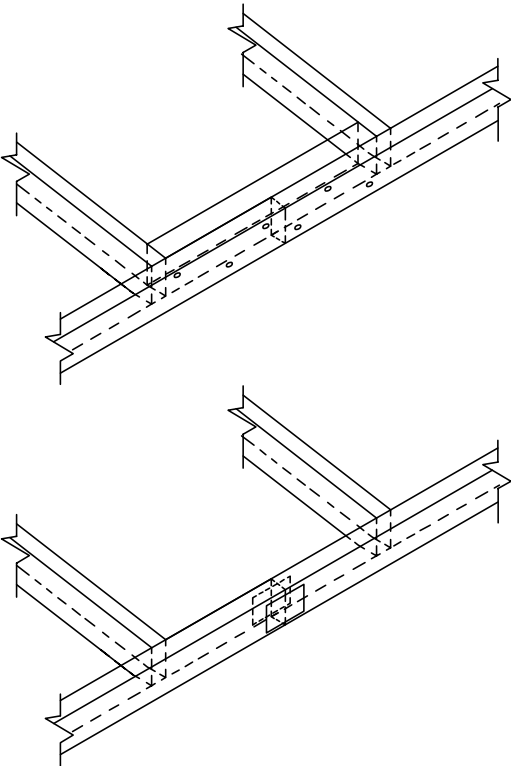
3" x 6" 0.037" GALV TRUSS PLATE
CH20 BY CH MACHINE OR EAGLE OR
EQUAL ON EACH WIDE FACE OF
2x6 SYP #2 PT RIM JOIST BUTT
JOINT SEAM, PLATES
HYDRAULICALLY IMBEDDED INTO
MEMBERS

OR



2x6 SYP #2 PT RIM JOISTS
SEAMED BETWEEN FLOOR JOISTS
AT CENTER OF 16" SPACING WITH
2x6x14.5" SYP #2 PT BACKER
BLOCK ACROSS INSIDE OF BUTT
JOINT SEAM, ATTACH RIM JOISTS
TO BACKER BLOCK W/ (8) -5/16"x3"
CONSTRUCTION LAG SCREW

TYPICAL FLOOR RIM JOIST
SPLICING DETAIL
N.T.S.



TYPICAL WOOD FRAMED ROOF PANEL
SPLICING DETAIL

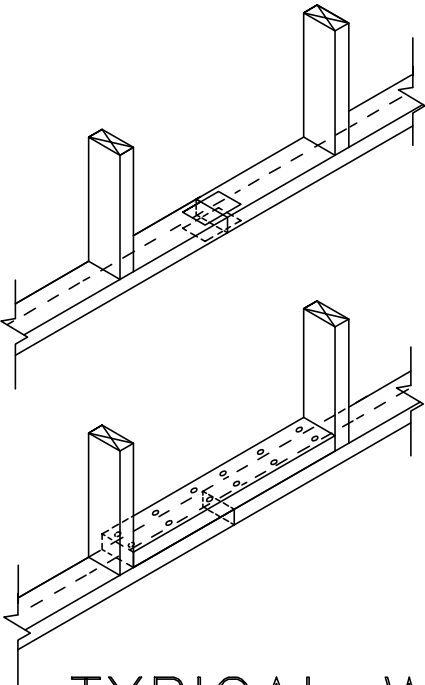
ROOF PANEL RIM RAFTER SEAMED
BETWEEN TRUSS RAFTERS AT
CENTER OF RAFTER BAY WITH 2x4
SYP#1 BLOCK ATTACHED TO INSIDE
OF 2x4 SYP #1 RIM RAFTER SEAM,
FASTEN WITH (6) -5/16" x 3"
CONSTRUCTION LAG SCREWS

OR

TYPICAL WOOD FRAMED ROOF PANEL
SPLICING DETAIL

2.5" x 4" .037" GALV STEEL TRUSS
PLATE CH20 BY CH MACHINE OR
EAGLE OR EQUAL ON EACH WIDE
FACE OF 2x4 SYP #1 ROOF PLATE
BUTT JOINT, PLATES HYDRAULICALLY
IMBEDDED INTO MEMBERS

TYPICAL WOOD ROOF PANEL
PLATE SPLICING DETAIL
N.T.S.



TYPICAL WOOD WALL PLATE SPLICING
DETAIL

2.5" x 4" .037" GALV TRUSS PLATE
CH20 BY CH MACHINE OR EAGLE OR
EQUAL ON EACH WIDE FACE OF 2x4
SYP#1 TOP OR BOTTOM PLATE SEAM,
PLATES HYDRAULICALLY IMBEDDED
INTO MEMBERS

OR

2x4 SYP #1 TOP & BOTTOM WALL
PLATES SEAMED BETWEEN WALL
STUDS AT CENTER OF STUD BAY WITH
2x4 SYP#1 BLOCK ACROSS INSIDE OF
PLATE SEAM, ATTACH BLOCK TO
ADJOINING TOP OR BOTTOM PLATE
W/ (12) -3" x .120" NAILS OR
ALTERNATE (6) -5/16" x 3"
CONSTRUCTION LAG SCREWS

TYPICAL WOOD WALL PLATE
SPLICING DETAIL
N.T.S.

General Notes			
<div>ROBIN BUILDERS, INC 3771 Ga Highway 130 E LYONS, GA 30436 (912) 526-3266</div>		<div>Kenneth E. Vogan P. E. Florida License No. 53439</div>	
	CONSTRUCTION TYPE	VB	FIRE RATING EXT. WALL:
	OCCUPANCY:	UTILITY	PLAN NO:
	ALLOW. # OF FLOORS:	1	FBC 2023 8th ED
	ULTIMATE WIND VELOCITY:	160	ALLOW. FLOOR LOAD:
			75
			APPROVAL DATE:
			10/1/2023
No.	Revision/Issue		Date

Firm Name and Address

ROBIN BUILDERS, INC.
3771 GA HIWAY 130E
LYONS, GA 30436
912-526-3266

Project Name and Address

SPLICING DETAILS
23FBCAGV

Project

23FBCAGV

Sheet

3 of 15

Date

10-1-23

Scale

NONE

WOOD FRAMING: END GABLE AMERICANA

HEADER DETAIL, MAX SPANS & FASTENING			
HEADERS	1-2x4	2- 2X4 WITH 1/2" PLYWOOD	2- 2X6 WITH 1/2" PLYWOOD
		 OR 1-4x4	 OR 1-4x6
MAX SPANS	22.5"	72"	96"
FASTENING	2-3"x.120" EA END	6-3"x.120" EA END	8-3"x.120" EA END

SILL SPAN & FASTENING	
SILLS	1-2x4
MAX SPANS	48"
FASTENING	2-3"x.120" EA END

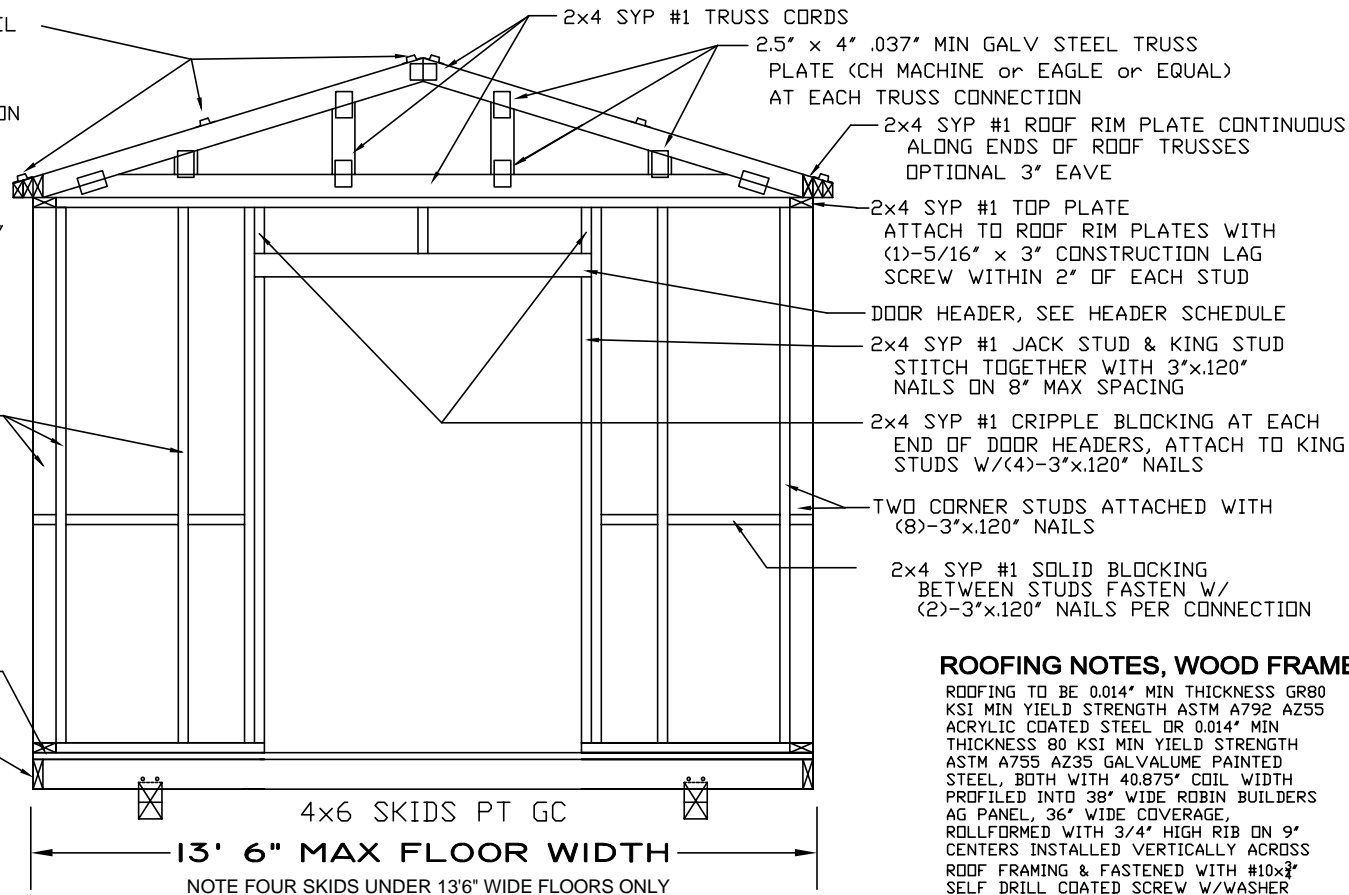
0.037" MIN GALV STEEL HAT CHANNEL
3' OC MAX SPACING & ATTACHED
PERPENDICULAR TO ROOF TRUSSES
WITH (2)-2.25" x .131" HEAT-
TREATED GALV NAILS PER CONNECTION

4
OPTIONAL EAVE 3'

2x4 SYP #1 STUDS 24" MAX SPACING
ATTACH TO TOP & BOTTOM PLATES
W/ (1)-5/16" x 3" CONSTRUCTION LAG
SCREW & (2)-3" x .120"
NAILS PER CONNECTION

2x4 SYP #1 BOTTOM PLATE ATTACHED TO
FLOOR W/ (2)-3" x .120" NAIL 12" MAX SPACE
& (1)-5/16" x 4" CONSTRUCTION LAG SCREW
GRK RSS OR EQUAL WITHIN 2" OF EA STUD. SCREWS
FASTEN THRU PLATE & INTO 2x6 PT RIM OR JOIST

2x6 SYP #2 PT FLOOR RIM JOISTS
ATTACHED TO FLOOR JOISTS W/
(3)-3" x .120" GALV NAILS



ROOFING NOTES, WOOD FRAMES:

ROOFING TO BE 0.014" MIN THICKNESS GR80 KSI MIN YIELD STRENGTH ASTM A792 AZ55 ACRYLIC COATED STEEL OR 0.014" MIN THICKNESS 80 KSI MIN YIELD STRENGTH ASTM A755 AZ35 GALVALUME PAINTED STEEL, BOTH WITH 40.875" COIL WIDTH PROFILED INTO 38" WIDE ROBIN BUILDERS AG PANEL, 36" WIDE COVERAGE, ROLLFORMED WITH 3/4" HIGH RIB ON 9" CENTERS INSTALLED VERTICALLY ACROSS ROOF FRAMING & FASTENED WITH #10x3" SELF DRILL COATED SCREW W/WASHER INTO STEEL PLATES & BELTLINES, RIDGE CAP 8" WIDE BLANK OF MATCHING STEEL AND ATTACHED WITH CLOSURE FOAM UNDERNEATH, FASTEN WITH #12 x 1-1/2" COATED SCREWS W/WASHER AT 9" SPACING OR SHINGLE ROOF 3 TAB OR ARCH GRADE OVER 1/2" OSB INSTALLED PER SECTION 1507

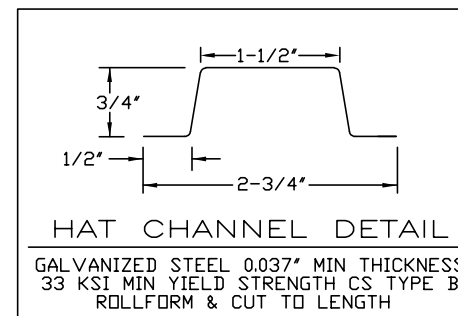
SIDING NOTES, WOOD FRAMES:

SIDING TO BE 0.014" MIN THICKNESS GR80 KSI MIN YIELD STRENGTH ASTM A755 AZ 35 GALVALUME PAINTED STEEL 40.875" COIL WIDTH FORMED INTO ROBIN BUILDERS R* LAP DUTCH LAP PROFILE 38" WIDE PANEL, 36" WIDE COVERAGE WITH 1/2" HIGH RIB ON 6" CENTERS RUN HORIZONTAL ACROSS WALL FRAMING FASTENED WITH #8 x 3/4" MIN COATED STEEL SCREWS ON 12" SPACING IN FIELD OF PANELS, 6" SPACING AT ENDS OF PANEL, 12" SPACING ALONG FLOOR OR SIDING TO BE 0.014" MIN THICKNESS GR80 KSI MIN YIELD STRENGTH ASTM A755 AZ 35 GALVALUME PAINTED STEEL 40.875" COIL WIDTH FORMED INTO ROBIN BUILDERS AG PANEL PROFILE 38" WIDE PANEL WIDTH, 36" WIDE PANEL COVERAGE WITH 3/4" HIGH RIB ON 9" CENTERS RUN HORIZONTAL OR VERTICAL FASTENED WITH #8 x 3/4" MIN COATED STEEL SCREWS AT 9" OC ALONG FRAMING MEMBERS OR LP SMARTSIDE 3/8" PRECISION PANEL FASTENED WITH ASN 23515 1.375" x 100 HELICAL BALISTIC PIN OR EQUAL 6" OC EDGE & 8" OC FIELD OR LP SMART LAP SIDING FASTENED WITH ASN 23515 1.375" x 100 HELICAL BALISTIC PIN OR EQUAL BLIND NAILD OVER 0.105" THERMO-SHEATHING or 1/2" OSB WALL SHEATHING OR POLYCARBONATE SIDING 3/8" HIGH RIB ON 9" CENTERS 36" WIDE PANELS SPANNING HORIZONTAL OVER FRAMING MEMBERS FASTENED WITH #10 x 3/8" SELF DRILL SCREW W/WASHER ON 9" CENTERS ALONG VERTICAL FRAMING MEMBERS

END WALL FRAMING

N.T.S.

2024-01-18 TOP LINE ENGINEERING, LLC APPROVAL



0.037" MIN GALV STEEL HAT CHANNEL
3' OC MAX SPACING & ATTACHED
PERPENDICULAR TO ROOF TRUSSES
WITH (2)-2.25" x .131" HEAT-TREATED
GALV NAILS PER CONNECTION

2x4 SYP #1 TRUSS CORDS
TRUSSES ON MAX 2' SPACING
2.5' x 4' .037" MIN GALV STEEL TRUSS
PLATE (CH MACHINE or EAGLE or EQUAL)
BOTH SIDES AT EACH CONNECTION
2x4 SYP #1 VERTICAL RIM RAFTER
CONTINUOUS ALONG ENDS OF ROOF TRUSSES
ATTACH TRUSSES TO RIM W/(3)-3" x .120" NAILS PER CONN
3' EAVE OPTIONAL

TRUSS DESIGN IN ACCORDANCE WITH FBC 2304.4

TOP LINE ENGINEERING, LLC
STRUCTURAL ENGINEERS
William E. Neary, III
SMP-51, SMI-79, ICC 5185040
10649 Oakview Pointe Terrace
Gotha, Florida 34734

2x4 SYP #1 SOLID BLOCKING
BETWEEN STUDS FASTEN W/
(2)-3'x.120" NAILS PER CONN

2x6 SYP #2 PT FLOOR JOISTS
ON 16" CENTERS, ATTACH TO SKIDS
W/ (1)-5/16" x 4" CONSTRUCTION
LAG SCREW PER CONNECTION

2x4 SYP #1 TOP WALL PLATE
ATTACH TO ROOF RIM RAFTER W/
(1)-5/16" x 3" CONSTRUCTION LAG
SCREW WITHIN 2" OF EACH STUD

2x4 SYP #1 STUDS 24" MAX SPACING
ATTACH TO TOP & BOTTOM PLATES W/
(1)-5/16" x 3" CONSTRUCTION LAG SCREW
& (2)-3" x .120" NAILS PER CONNECTION

2x4 SYP #1 BOTTOM PLATE ATTACHED TO
FLOOR W/ (2)-3" x .120" NAIL 12" MAX SPACE
& (1)-5/16" x 4" CONSTRUCTION LAG SCREW
GRK RSS OR EQUAL WITHIN 2" OF EA STUD. SCREWS
FASTEN THRU PLATE & INTO 2x6 PT RIM OR JOIST

2x6 SYP #2 PT FLOOR RIM JOISTS
ATTACHED TO FLOOR JOISTS W/
(3)-3'x.120" GALV NAILS

4x6 SKIDS PT GC

13' 6" MAX.
NOTE FOUR SKIDS UNDER 13'6" WIDE FLOORS ONLY

CROSS SECTION FRAMING

N.T.S.

General Notes

																																																																																																																																																																																																																																																																																																																																																																																																																																																																																																																																																																																																																																																																																																																																																																																																																																																																																																																																																																																																																																																																																																																																																																																																																																																																																																																																																																																																																																																																																																																																																																	</
--	--	--	--	--	--	--	--	--	--	--	--	--	--	--	--	--	--	--	--	--	--	--	--	--	--	--	--	--	--	--	--	--	--	--	--	--	--	--	--	--	--	--	--	--	--	--	--	--	--	--	--	--	--	--	--	--	--	--	--	--	--	--	--	--	--	--	--	--	--	--	--	--	--	--	--	--	--	--	--	--	--	--	--	--	--	--	--	--	--	--	--	--	--	--	--	--	--	--	--	--	--	--	--	--	--	--	--	--	--	--	--	--	--	--	--	--	--	--	--	--	--	--	--	--	--	--	--	--	--	--	--	--	--	--	--	--	--	--	--	--	--	--	--	--	--	--	--	--	--	--	--	--	--	--	--	--	--	--	--	--	--	--	--	--	--	--	--	--	--	--	--	--	--	--	--	--	--	--	--	--	--	--	--	--	--	--	--	--	--	--	--	--	--	--	--	--	--	--	--	--	--	--	--	--	--	--	--	--	--	--	--	--	--	--	--	--	--	--	--	--	--	--	--	--	--	--	--	--	--	--	--	--	--	--	--	--	--	--	--	--	--	--	--	--	--	--	--	--	--	--	--	--	--	--	--	--	--	--	--	--	--	--	--	--	--	--	--	--	--	--	--	--	--	--	--	--	--	--	--	--	--	--	--	--	--	--	--	--	--	--	--	--	--	--	--	--	--	--	--	--	--	--	--	--	--	--	--	--	--	--	--	--	--	--	--	--	--	--	--	--	--	--	--	--	--	--	--	--	--	--	--	--	--	--	--	--	--	--	--	--	--	--	--	--	--	--	--	--	--	--	--	--	--	--	--	--	--	--	--	--	--	--	--	--	--	--	--	--	--	--	--	--	--	--	--	--	--	--	--	--	--	--	--	--	--	--	--	--	--	--	--	--	--	--	--	--	--	--	--	--	--	--	--	--	--	--	--	--	--	--	--	--	--	--	--	--	--	--	--	--	--	--	--	--	--	--	--	--	--	--	--	--	--	--	--	--	--	--	--	--	--	--	--	--	--	--	--	--	--	--	--	--	--	--	--	--	--	--	--	--	--	--	--	--	--	--	--	--	--	--	--	--	--	--	--	--	--	--	--	--	--	--	--	--	--	--	--	--	--	--	--	--	--	--	--	--	--	--	--	--	--	--	--	--	--	--	--	--	--	--	--	--	--	--	--	--	--	--	--	--	--	--	--	--	--	--	--	--	--	--	--	--	--	--	--	--	--	--	--	--	--	--	--	--	--	--	--	--	--	--	--	--	--	--	--	--	--	--	--	--	--	--	--	--	--	--	--	--	--	--	--	--	--	--	--	--	--	--	--	--	--	--	--	--	--	--	--	--	--	--	--	--	--	--	--	--	--	--	--	--	--	--	--	--	--	--	--	--	--	--	--	--	--	--	--	--	--	--	--	--	--	--	--	--	--	--	--	--	--	--	--	--	--	--	--	--	--	--	--	--	--	--	--	--	--	--	--	--	--	--	--	--	--	--	--	--	--	--	--	--	--	--	--	--	--	--	--	--	--	--	--	--	--	--	--	--	--	--	--	--	--	--	--	--	--	--	--	--	--	--	--	--	--	--	--	--	--	--	--	--	--	--	--	--	--	--	--	--	--	--	--	--	--	--	--	--	--	--	--	--	--	--	--	--	--	--	--	--	--	--	--	--	--	--	--	--	--	--	--	--	--	--	--	--	--	--	--	--	--	--	--	--	--	--	--	--	--	--	--	--	--	--	--	--	--	--	--	--	--	--	--	--	--	--	--	--	--	--	--	--	--	--	--	--	--	--	--	--	--	--	--	--	--	--	--	--	--	--	--	--	--	--	--	--	--	--	--	--	--	--	--	--	--	--	--	--	--	--	--	--	--	--	--	--	--	--	--	--	--	--	--	--	--	--	--	--	--	--	--	--	--	--	--	--	--	--	--	--	--	--	--	--	--	--	--	--	--	--	--	--	--	--	--	--	--	--	--	--	--	--	--	--	--	--	--	--	--	--	--	--	--	--	--	--	--	--	--	--	--	--	--	--	--	--	--	--	--	--	--	--	--	--	--	--	--	--	--	--	--	--	--	--	--	--	--	--	--	--	--	--	--	--	--	--	--	--	--	--	--	--	--	--	--	--	--	--	--	--	--	--	--	--	--	--	--	--	--	--	--	--	--	--	--	--	--	--	--	--	--	--	--	--	--	--	--	--	--	--	--	--	--	--	--	--	--	--	--	--	--	--	--	--	--	--	--	--	--	--	--	--	--	--	--	--	--	--	--	--	--	--	--	--	--	--	--	--	--	--	--	--	--	--	--	--	--	--	--	--	--	--	--	--	--	--	--	--	--	--	--	--	--	--	--	--	--	--	--	--	--	--	--	--	--	--	--	--	--	--	--	--	--	--	--	--	--	--	--	--	--	--	--	--	--	--	--	--	--	--	--	--	--	--	--	--	--	--	--	--	--	--	--	--	--	--	--	--	--	--	--	--	--	--	--	--	--	--	--	--	--	--	--	--	--	--	--	--	--	--	--	--	--	--	--	--	--	--	--	--	--	--	--	--	--	--	--	--	--	--	--	--	--	--	--	--	--	--	--	--	--	--	--	--	--	--	--	--	--	--	--	--	--	--	--	--	--	--	--	--	--	--	--	--	--	--	--	--	--	--	--	--	--	--	--	--	--	--	--	--	--	--	--	--	--	--	--	--	--	--	--	--	--	--	--	--	--	--	--	--	--	--	--	--	--	--	--	--	--	--	--	--	--	--	--	--	--	--	--	--	--	--	--	--	--	--	--	--	--	--	--	--	--	--	--	--	--	--	--	--	--	--	--	--	--	--	--	--	--	--	--	--	--	--	--	--	--	--	--	--	--	--	--	--	--	--	--	--	--	--	--	--	--	--	--	--	--	--	--	--	--	--	--	--	--	--	--	--	--	--	--	--	--	--	--	--	--	--	--	--	--	--	--	--	--	--	--	--	--	--	--	--	--	--	--	--	--	--	--	--	--	--	--	--	--	--	--	--	--	--	--	--	--	--	--	--	--	--	--	--	--	--	--	--	--	--	--	--	--	--	--	--	--	--	--	--	--	--	--	--	--	--	--	--	--	--	--	--	--	--	--	--	--	--	--	--	--	--	--	--	--	--	--	--	--	--	--	--	--	--	--	--	--	--	--	--	--	--	--	--	--	--	--	--	--	--	--	--	--	--	--	--	--	--	--	--	--	--	--	--	--	--	--	--	--	--	--	--	--	--	--	--	--	--	--	--	--	--	--	--	--	--	--	--	--	--	--	--	--	--	--	--	--	--	--	--	--	--	--	--	--	--	--	--	--	--	--	--	--	--	--	--	--	--	--	--	--	--	--	--	--	--	--	--	--	--	--	--	--	--	--	--	--	--	--	--	--	--	--	--	--	--	--	--	--	--	----

Firm Name and Address
ROBIN BUILDERS, INC.
3771 GA HIWAY 130E
LYONS, GA 30436
912-526-3266

Project Name and Address
**FRAMING DETAILS:
AMERICANA STYLE
23FBCAGV**

Project	23FBCAGV	Sheet	
Date	10/1/23		4 of 15
Scale	NONE		

WOOD FRAMING: SIDE GABLE FLORIDIAN

NOTE: GABLE ORIENTATION IS SYMBOLIC
SINCE GABLE CAN BE IN EITHER
DIRECTION.

SEE HEADER SIZE AND
FASTENING SCHEDULE,
SIDING NOTES &
ROOFING NOTES PAGE 4

TOP LINE ENGINEERING, LLC

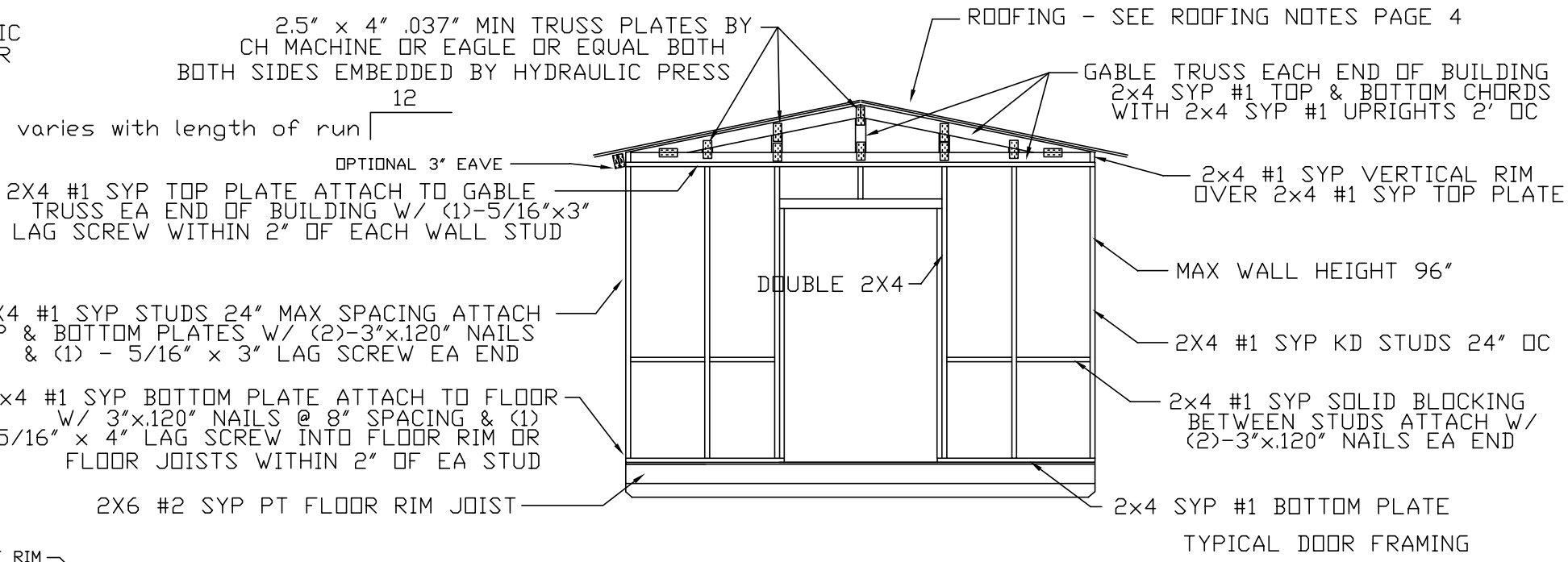
STRUCTURAL ENGINEERS

William E. Neary, III

SMP-51, SMI-79, ICC 5185040

10649 Oakview Pointe Terrace

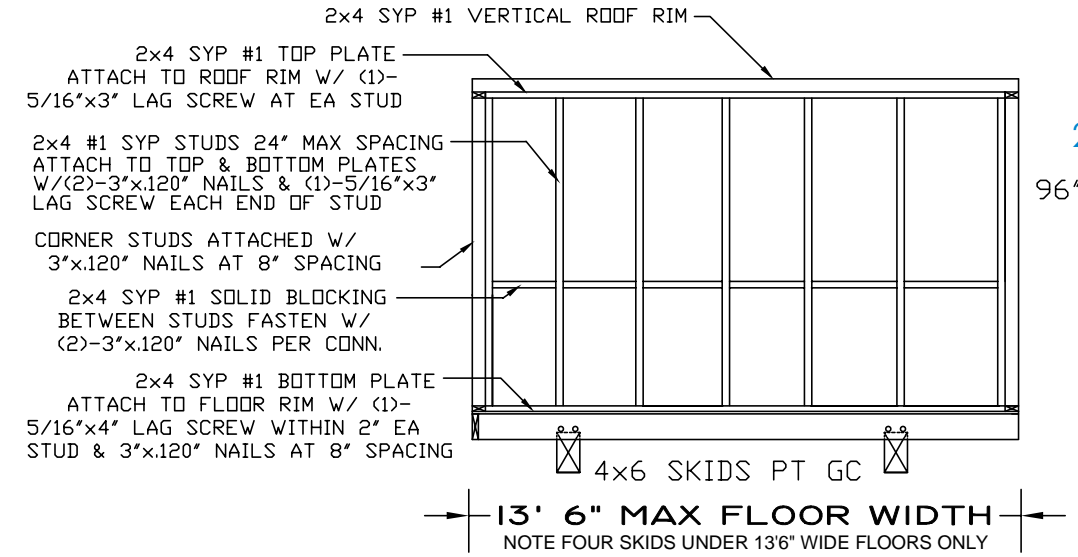
Gotha, Florida 34734



GABLE WALL FRAMING

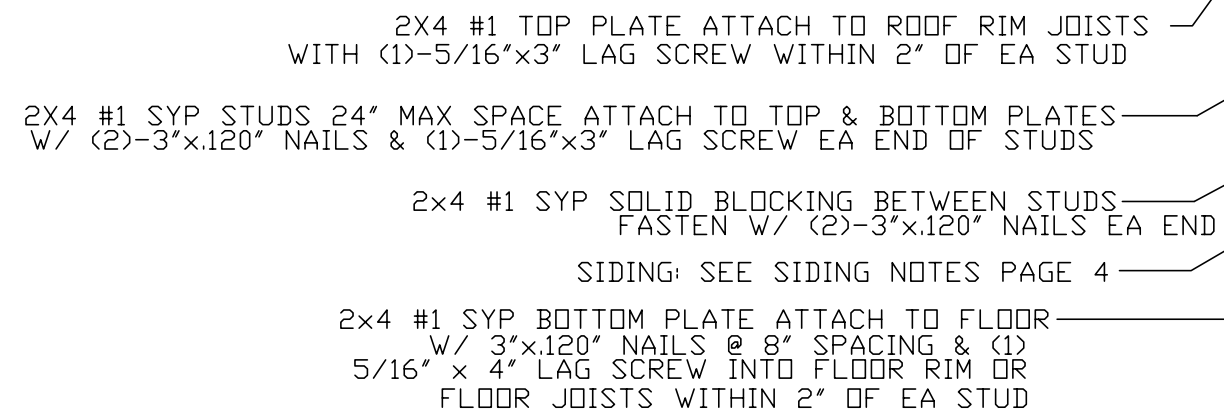
2024-01-18 TOP LINE ENGINEERING, LLC APPROVAL

96" MAX WALL HEIGHT



EAVE LINE WALL FRAMING

N.T.S.



TYPICAL SIDE GABLE CROSS SECTION

N.T.S.

General Notes

ROBIN BUILDERS, INC

3771 Ga Highway 130 E
LYONS, GA 30436
(912) 526-3266

Kenneth E. Vogan P. E.

Florida License No. 53439

CONSTRUCTION TYPE

UTILITY

ALLOW. # OF FLOORS:

1

ULTIMATE WIND VELOCITY:

160

FIRE RATING EXT. WALL:

0

PLAN NO:

FBC 2023 8th ED

ALLOW. FLOOR LOAD:

75

APPROVAL DATE:

10/1/2023

No.

Revision/Issue

Date

Firm Name and Address

ROBIN BUILDERS, INC.

3771 GA HIWAY 130E

LYONS, GA 30436

912-526-3266

Project Name and Address

FRAMING DETAILS:

FLORIDIAN STYLE

23FBCAGV

Project

23FBCAGV

Date

10/1/23

Scale

AS NOTED

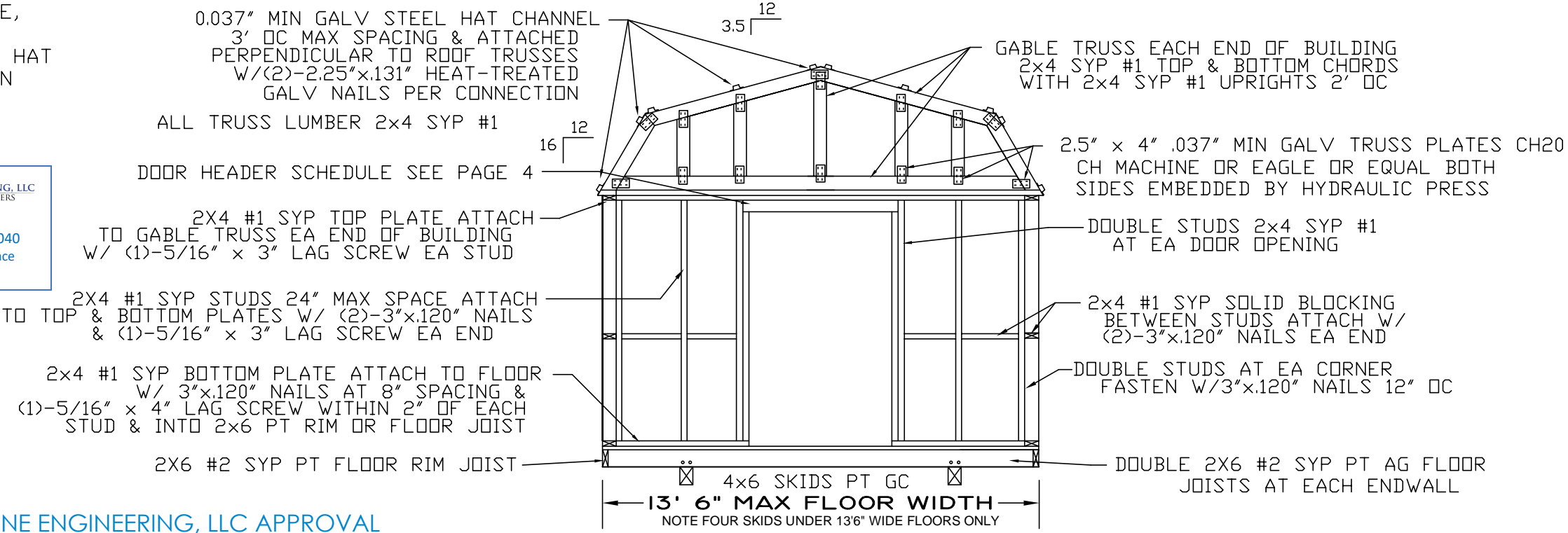
Sheet

5 of 15

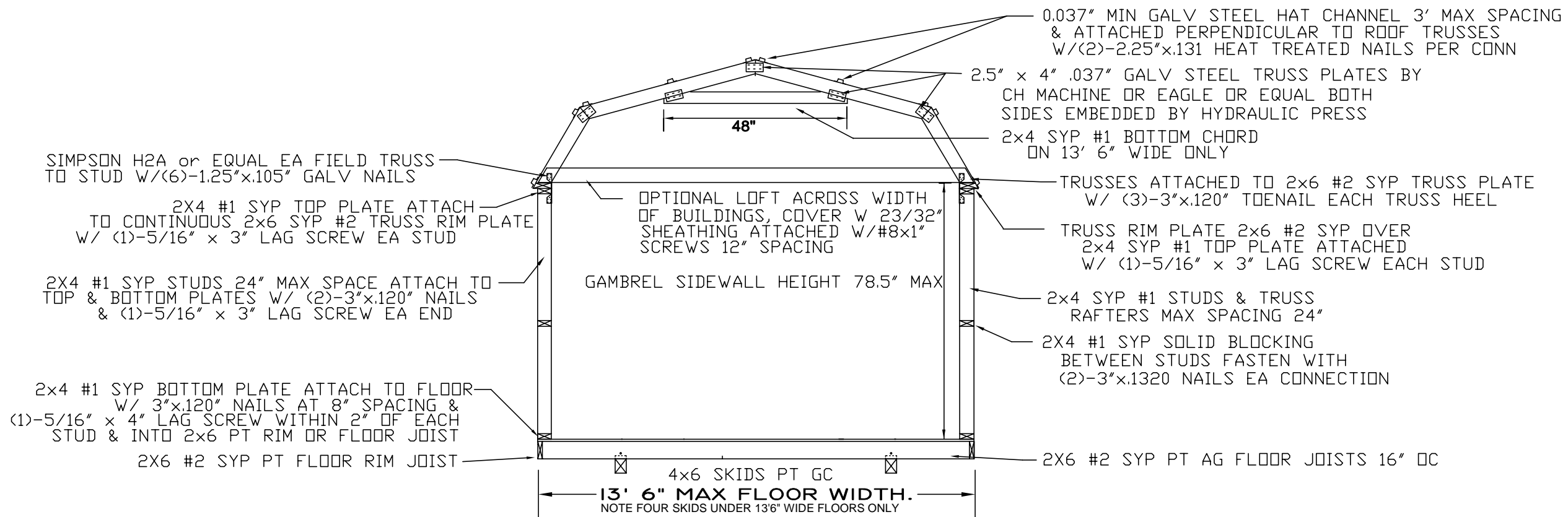
WOOD FRAMING: GAMBREL MODEL

SEE HEADER SIZE AND FASTENING SCHEDULE, SIDING NOTES, ROOFING NOTES AND HAT CHANNEL DETAILS ON PAGE 4

TOP LINE ENGINEERING, LLC
STRUCTURAL ENGINEERS
William E. Neary, III
SMP-51, SMI-79, ICC 5185040
10649 Oakview Pointe Terrace
Gotha, Florida 34734



END WALL FRAMING
N.T.S.



CROSS SECTION DETAIL
N.T.S.

General Notes			
ROBIN BUILDERS, INC. 3771 Ga Highway 130 E LYONS, GA 30436 (912) 526-3266	Kenneth E. Vogan P. E. Florida License No. 53439	FIRE RATING EXT. WALL:	0
		PLAN NO:	FBC 2023 8th ED
		ALLOW. FLOOR LOAD:	75
		APPROVAL DATE:	10/1/2023
	CONSTRUCTION TYPE	VB	
	OCCUPANCY:	UTILITY	
	ALLOW. # OF FLOORS:	1	
	ULTIMATE WIND VELOCITY:	160	
No.	Revision/Issue	Date	
Firm Name and Address			
ROBIN BUILDERS, INC. 3771 GA HIWAY 130E LYONS, GA 30436 912-526-3266			
Project Name and Address			
FRAMING DETAILS: GAMBREL STYLE 23FBCAGV			
Project: 23FBCAGV		Sheet	
Date: 10/1/23		6 of 15	
Scale: NONE			

STEEL FRAMING: GAMBREL MODEL

SEE STEEL FRAMING NOTES PAGE 8
FOR HEADER DETAILS, SILL SPANS,
AND SCREW CONNECTION DETAILS

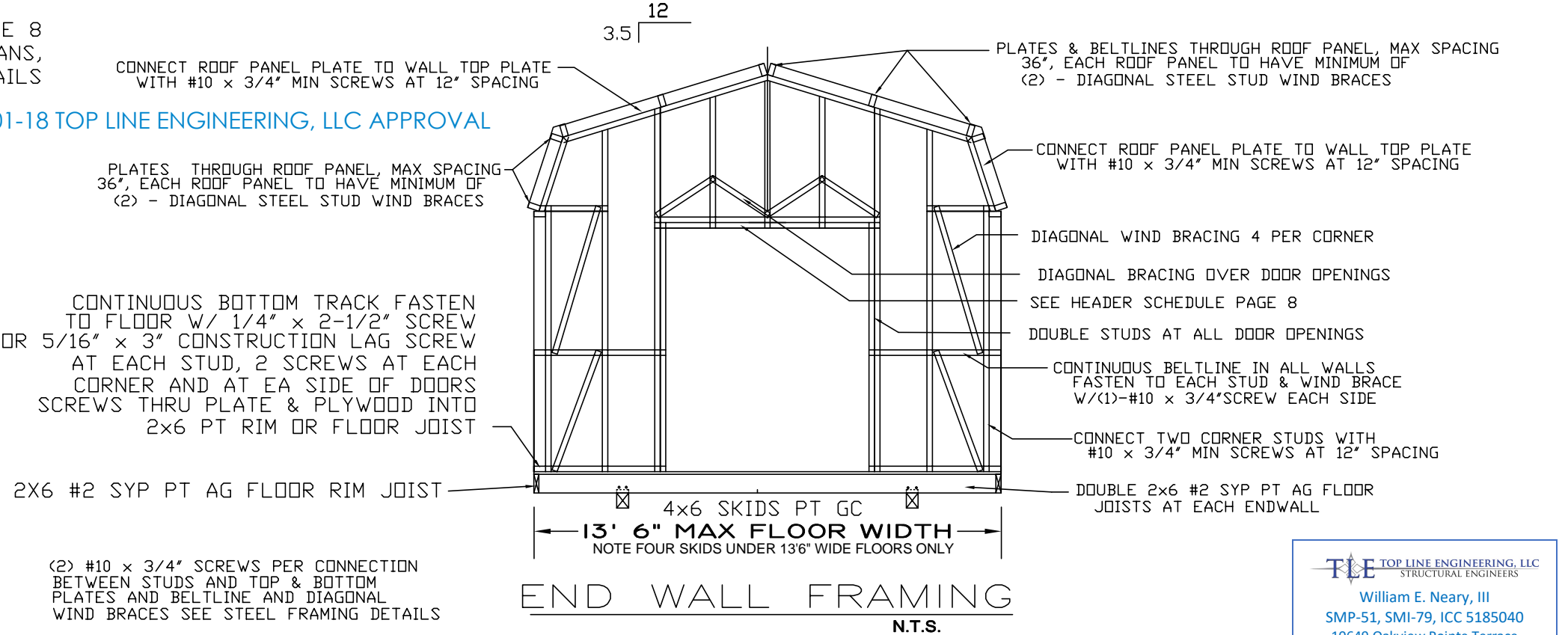
2024-01-18 TOP LINE ENGINEERING, LLC APPROVAL

ROOFING NOTES STEEL FRAMES:

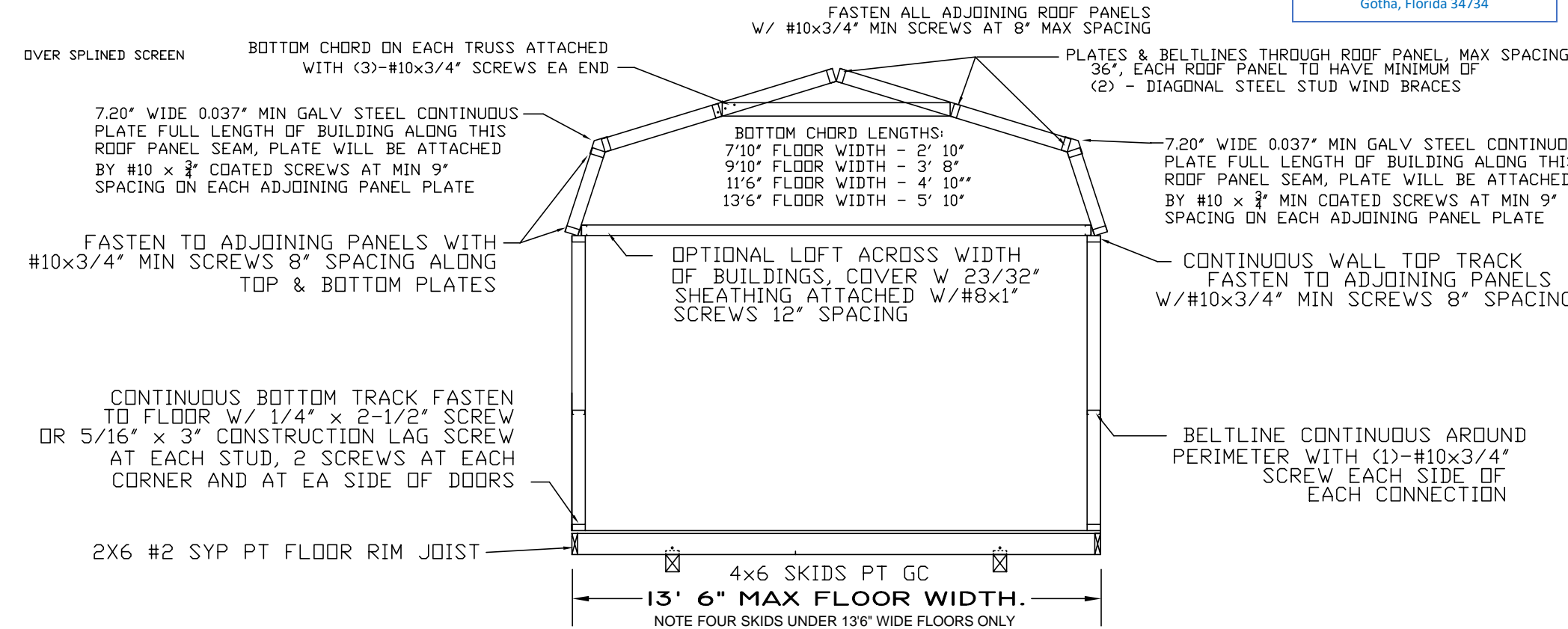
ROOFING TO BE 0.014" MIN THICKNESS GR80 KSI MIN YIELD STRENGTH ASTM A792 AZ55 ACRYLIC COATED STEEL OR 0.014" MIN THICKNESS 80 KSI MIN YIELD STRENGTH ASTM A755 AZ35 GALVALUME PAINTED STEEL, BOTH WITH 40.875" COIL WIDTH PROFILED INTO 38" WIDE ROBIN BUILDERS AG PANEL, 36" WIDE COVERAGE, ROLLFORMED WITH 3/4" HIGH RIB ON 9" CENTERS INSTALLED VERTICALLY ACROSS ROOF FRAMING & FASTENED WITH #10x3/4" SELF DRILL COATED SCREW W/WASHER INTO STEEL PLATES & BELTLINES, RIDGE CAP 8" WIDE BLANK OF MATCHING STEEL AND ATTACHED WITH CLOSURE FOAM UNDERNEATH, FASTEN WITH #12 x 1-1/2" SCREWS W/WASHER AT 9" SPACING OR SHINGLE ROOF 3 TAB OR ARCH GRADE OVER 7/8" OSB INSTALLED PER SECTION 1507

SIDING NOTES STEEL FRAMES:

SIDING TO BE 0.014" MIN THICKNESS GR80 KSI MIN YIELD STRENGTH ASTM A755 AZ 35 GALVALUME PAINTED STEEL 40.875" COIL WIDTH FORMED INTO ROBIN BUILDERS R*LAP DUTCH LAP PROFILE 38" WIDE PANEL, 36" WIDE COVERAGE WITH 1/4" HIGH RIB ON 6" CENTERS RUN HORIZONTAL ACROSS WALL FRAMING FASTENED WITH #8 x 1/2" COATED STEEL SCREWS ON 12" SPACING IN FIELD OF PANELS, 6" SPACING AT ENDS OF PANEL, 12" SPACING ALONG FLOOR OR SIDING TO BE 0.014" MIN THICKNESS GR80 KSI MIN YIELD STRENGTH ASTM A755 AZ 35 GALVALUME PAINTED STEEL 40.875" COIL WIDTH FORMED INTO ROBIN BUILDERS AG PANEL PROFILE 38" WIDE PANEL WIDTH, 36" WIDE PANEL COVERAGE WITH 3/4" HIGH RIB ON 9" CENTERS RUN HORIZONTAL OR VERTICAL FASTENED WITH #8 x 1/2" MIN COATED STEEL SCREWS AT 9" OC ALONG FRAMING MEMBERS OR LP SMARTSIDE 3/4" PRECISION PANEL FASTENED WITH ASN 23515 1.375" x 100 HELICAL BALISTIC PIN MIN OR EQUAL 6" OC EDGE & 8" OC FIELD OR LP SMART LAP SIDING FASTENED WITH ASN 23515 1.375" x 100 HELICAL BALISTIC PIN MIN OR EQUAL BLIND NAILED OVER 0.105" THERMO-SHEATHING or 7/8" OSB WALL SHEATHING OR POLYCARBONATE SIDING 3/4" HIGH RIB ON 9" CENTERS 36" WIDE PANELS SPANNING HORIZONTAL OVER FRAMING MEMBERS FASTENED WITH #10 x 3/4" SELF DRILL SCREW W/WASHER ON 9" CENTERS OR INSECT SCREENING SPLINED INTO BLACK VINYL BASE ATTACHED TO STEEL FRAME VERTICAL MEMBERS MAX 4' SPACING, ATTACH BASE W/ #10-16x3/4" PANCAKE HEAD STEEL SCREW MAX 8" SPACING, ATTACH WHITE CAP



TLE TOP LINE ENGINEERING, LLC
STRUCTURAL ENGINEERS
William E. Neary, III
SMP-51, SMI-79, ICC 5185040
10649 Oakview Pointe Terrace
Gotha, Florida 34734



General Notes			
ROBIN BUILDERS, INC 3771 Ga Highway 130 E LYONS, GA 30436 (912) 526-3266	CONSTRUCTION TYPE VB UTILITY	FIRE RATING EXT. WALL:	0
		PLAN NO:	FBC 2023 8th ED
		ALLOW. FLOOR LOAD:	75
		APPROVAL DATE:	10/1/2023
Firm Name and Address		ROBIN BUILDERS, INC. 3771 GA HIWAY 130E LYONS, GA 30436 912-526-3266	
Project Name and Address		FRAMING DETAILS STEEL GAMBREL 23FBCAGV	
Project		23FBCAGV	Sheet
Date		10-1-23	7 of 15
Scale		NONE	

FRAMING: STEEL FRAME OPTION

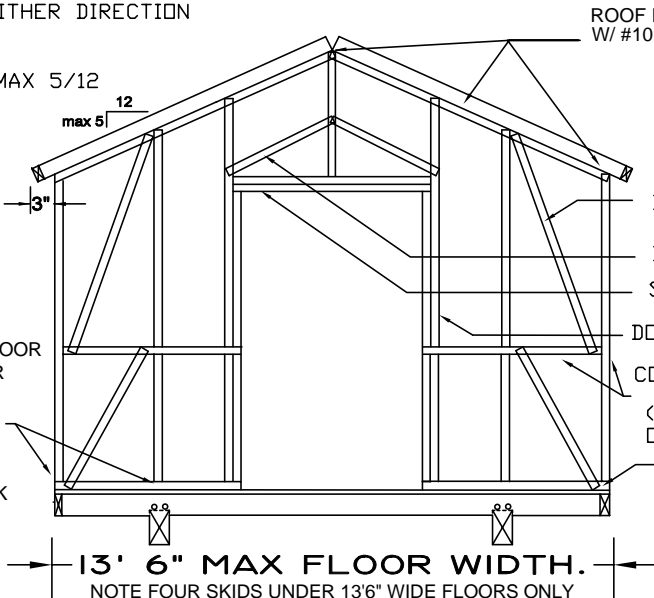
NOTE: GABLE ORIENTATION SYMBOLIC
SINCE GABLE CAN BE EITHER DIRECTION

ROOF PITCH VARIES TO MAX 5/12

OPTIONAL EAVE 3" MAX

CONNECT TWO CORNER
STUDS W/ #10 x 3/4"
MINIMUM SCREW
AT 12" SPACING

ATTACH BOTTOM TRACK TO FLOOR
W/ 1/4" x 2-1/2" LAG SCREWS OR
5/16"x3" CONSTRUCTION LAG
SCREW, (1) WITHIN 2" OF EACH
STUD, (2) AT EACH EDGE OF
DOOR OPENINGS, (2) AT EACH
CORNER, EA BOLT THRU TRACK
& PLYWOOD THEN INTO 2X6 PT
RIM OR FLOOR JOIST



GABLE VIEW
N.T.S.

SEE SIDING NOTES &
ROOFING NOTES PAGE 7

SEE OPTIONAL PORCH
DETAILS PAGE 9

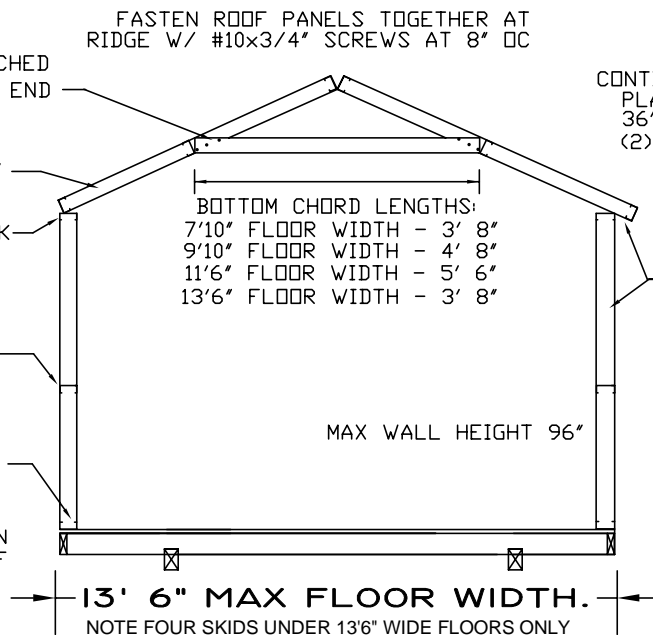
BOTTOM CHORD ON EACH TRUSS ATTACHED
WITH (3)-#10x3/4" SCREWS EA END

ROOF RAFTERS @ MAX SPACING 24"
24" & LOCATE OVER WALL STUDS

CONTINUOUS TOP TRACK
FASTEN TO ROOF PANELS WITH
#10x3/4" MIN SCREWS 8" SPACING

BELTLINE CONTINUOUS AROUND
PERIMETER WITH (1)-#10x3/4"
SCREW EACH SIDE OF
EACH CONNECTION

CONTINUOUS BOTTOM TRACK FASTEN TO
FLOOR W/ 1/4" x 2-1/2" GALV HEX
WASHER HEAD SCREW OR 5/16"x3"
CONSTRUCTION LAG SCREW, ONE WITHIN
2" OF EACH STUD, 2 AT EACH EDGE OF
DOOR OPENINGS, 2 AT EACH CORNER.
EACH BOLT THROUGH BASERAIL AND
PLYWOOD AND INTO 2x6 PT RIM OR
FLOOR JOIST



CROSS SECTION DETAIL
N.T.S.

ROOF PANEL ATTACH TO WALLS
W/ #10 x 3/4" MIN SCREWS AT 8" MAX SPACING

MAX WALL HEIGHT 96"

DIAGONAL WIND BRACES 4 PER CORNER

DIAGONAL BRACING OVER DOOR OPENINGS

SEE HEADER SCHEDULE PAGE 6

DOUBLE STUDS @ DOOR OPENINGS

CONTINUOUS BELTLINE IN WALLS
AROUND PERIMETER FASTEN W/
(1) - #10 x 3/4 SCREW EA SIDE
OF EACH CONNECTION

TOP & BOTTOM WALL PLATES

MAX DOOR SIZE 96" w x 80" h
TYPE, SIZE & LOCATION OF DOORS
& WINDOWS MAY VARY

ALL STEEL WALL & ROOF FRAMING
MEMBERS ATTACHED WITH (1)-#10 x 3/4"
SCREW EACH SIDE OF EACH CONNECTION,
SEE STEEL FRAMING DETAILS

STEEL ROOF PANEL RIM RAFTER
OVER STEEL WALL TOP PLATE CONT.
FASTEN W/ #10 x 3/4" MIN SCREWS 8" OC

SIDING & ROOFING - SEE NOTES PAGE 7

STEEL STUDS 24" MAX SPACING

STEEL STUD DIAGONAL
WIND BRACES 4 PER CORNER

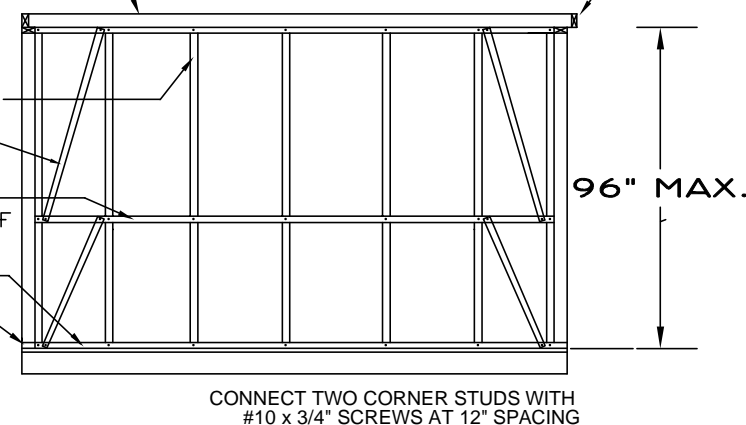
STEEL STUD CONTINUOUS
BELTLINE AT 36" AFF

STEEL BOTTOM PLATE

CONTINUOUS BOTTOM TRACK FASTEN
TO FLOOR W/ 1/4" x 2-1/2" GALV
HEX WASHER HEAD SCREW OR 5/16"x3"
CONSTRUCTION LAG SCREW, ONE
WITHIN 2" OF EACH STUD, 2 AT
EACH EDGE OF DOOR OPENINGS, 2 AT
EACH CORNER. EACH BOLT THROUGH
BASERAIL AND PLYWOOD AND INTO
2x6 PT RIM OR FLOOR JOIST

(2) #10 x 3/4" SCREWS PER CONNECTION
BETWEEN STUDS AND TOP & BOTTOM
PLATES AND BELTLINE AND DIAGONAL
WIND BRACES SEE STEEL FRAMING DETAILS

OPTIONAL 3" EAVE ENCLOSED

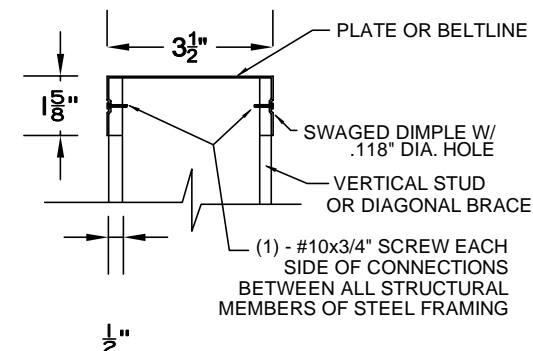


EAVE LINE WALL FRAMING
N.T.S.

2024-01-18 TOP LINE ENGINEERING, LLC APPROVAL

HEADER DETAIL, MAX SPANS & FASTENING			
HEADERS	1-2x4	2- 2X4	2- 2X4 W/ DIAGONAL .037" GALV STEEL BRACES OVERHEAD
MAX SPANS	22.5"	64"	96"
FASTENING	2- #10 x 3/4" SCREWS EACH END	4- #10 x 3/4" SCREWS EACH END	6- #10" x 3/4" SCREWS EACH END

SILL SPAN & FASTENING	
SILLS	1-2x4
MAX SPANS	48"
FASTENING	2- #10 x 3/4" SCREWS EACH END



ALL STEEL STUD FRAMING MEMBERS ROLLFORMED
0.037" MIN GALV G90 COMMERCIAL QUALITY STEEL
TYPE B CHEMICALLY-TREATED MIN YIELD STRENGTH 33KSI

STEEL FRAMING DETAILS

N.T.S.

General Notes

Kenneth E. Vogan P. E.
Florida License No. 53439

FIRE RATING EXT. WALL: 0
PLAN NO: FBC 2023 8th ED
ALLOW. FLOOR LOAD: 75
APPROVAL DATE: 10/1/2023

ROBIN BUILDERS, INC
3771 Ga Highway 130 E
LYONS, GA 30436
(912) 526-3266

CONSTRUCTION TYPE VB
OCCUPANCY: UTILITY
ALLOW. # OF FLOORS: 1
ULTIMATE WIND VELOCITY: 160

No. Revision/Issue Date

Firm Name and Address
ROBIN BUILDERS, INC.
3771 GA HIWAY 130E
LYONS, GA 30436
912-526-3266

Project Name and Address
FRAMING DETAILS:
STEEL FRAME OPTION
23FBCAGV

Project FBC 2023 Sheet
Date 10/1/23 8 of 15
Scale NONE

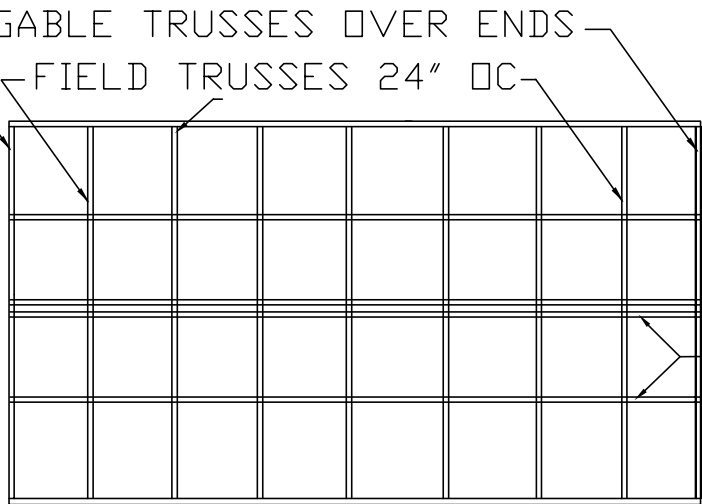
TOP LINE ENGINEERING, LLC
STRUCTURAL ENGINEERS
William E. Neary, III
SMP-51, SMI-79, ICC 5185040
10649 Oakview Pointe Terrace
Gotha, Florida 34734

WOOD FRAMING: PORCH OPTION

TRUSS SCHEDULE: 2x4 SYP #1 TRUSS RAFTERS 24" OC IN FIELD.
GABLE TRUSS RAFTER W/ FULL BOTTOM CHORD &
VERTICALS 24" MAX SPACING EA END OF BUILDINGS

0.037" MIN GALV STEEL HAT CHANNEL
3' OC MAX SPACING & ATTACHED
PERPENDICULAR TO ROOF TRUSSES
WITH 2-2.25"x.131" HEAT-TREATED
GALV NAILS PER CONNECTION
SEE NOTES PAGE 4

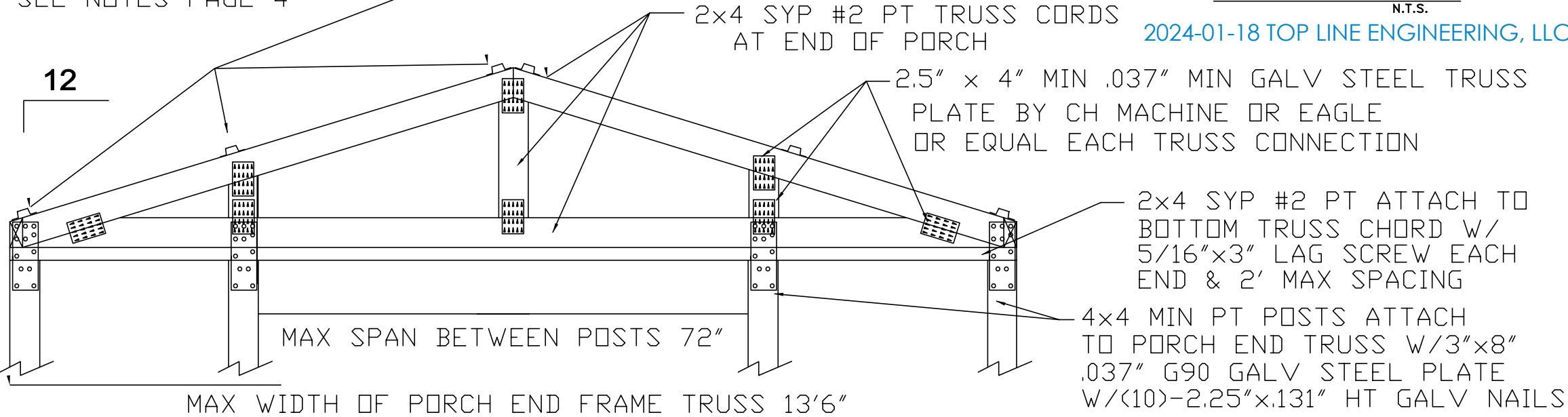
SEE HEADER SIZE AND
FASTENING SCHEDULE,
SIDING NOTES, ROOFING
NOTES, AND HAT CHANNEL
DETAILS PAGE 4



ROOF FRAMING

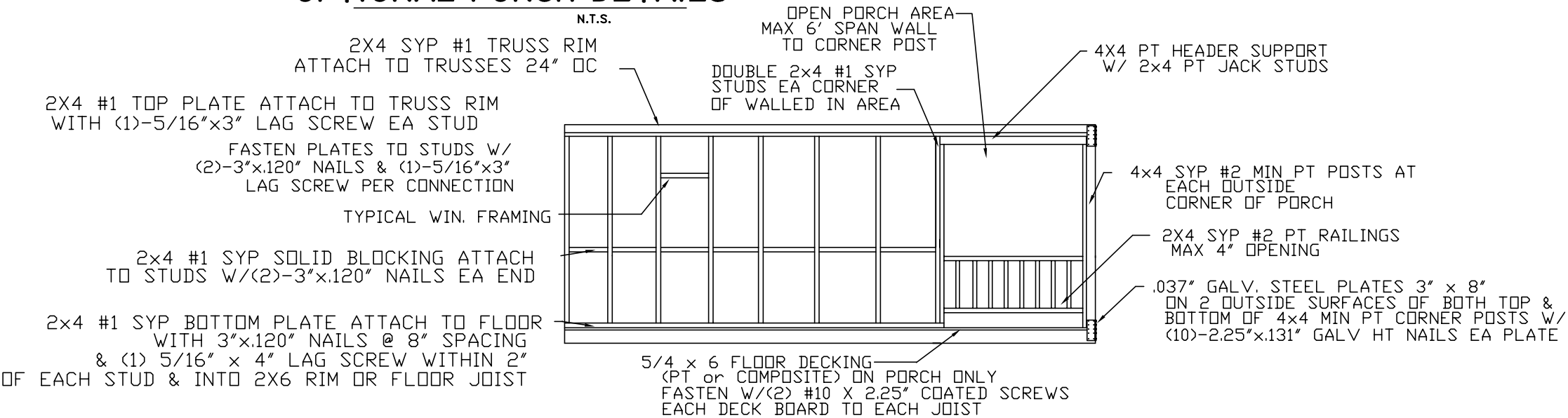
N.T.S.

2024-01-18 TOP LINE ENGINEERING, LLC APPROVAL



OPTIONAL PORCH DETAILS

N.T.S.



SIDE WALL FRAMING W/OPTIONAL PORCH

N.T.S.



TOP LINE ENGINEERING, LLC
STRUCTURAL ENGINEERS

William E. Neary, III

SMP-51, SMI-79, ICC 5185040

10649 Oakview Pointe Terrace

Gotha, Florida 34734

General Notes				
		ROBIN BUILDERS, INC		
		3771 Ga Highway 130 E LYONS, GA 30436 (912) 526-3266		
		Kenneth E. Vogan P. E. Florida License No. 53439		
		CONSTRUCTION TYPE	VB	FIRE RATING EXT. WALL: O
		OCCUPANCY:	UTILITY	PLAN NO: FBC 2023 8th ED
		ALLOW. # OF FLOORS:	1	ALLOW. FLOOR LOAD: 75
		ULTIMATE WIND VELOCITY:	160	APPROVAL DATE: 10/1/2023
No.		Revision/Issue		
		Date		

Firm Name and Address
ROBIN BUILDERS, INC.
3771 GA HIWAY 130E
LYONS, GA 30436
912-526-3266

Project Name and Address
FRAMING DETAILS:
WOOD AMERICANA
PORCH OPTION
23FBCAGV

Project	23FBCAGV	Sheet
Date	10/1/23	9 of 15
Scale	AS NOTED	

FRAMING: MONOSLOPE ROOF STEEL FRAME

SEE HEADER, SILL, AND
STRUCTURAL FRAME FASTENING
DETAILS SEE PAGE 8 STEEL
FRAMING DETAILS

ROOFING NOTES, MONOSLOPE
STEEL FRAMES:

ROOFING TO BE 0.014" MIN THICKNESS GR80
KSI MIN YIELD STRENGTH ASTM A792 AZ55
ACRYLIC COATED STEEL OR 0.014" MIN
THICKNESS 80 KSI MIN YIELD STRENGTH
ASTM A755 AZ35 GALVALUME PAINTED
STEEL, BOTH WITH 40.875" COIL WIDTH
PROFILED INTO 38" WIDE AG PANEL, 36"
WIDE COVERAGE, ROLLFORMED WITH 3/4"
HIGH RIB ON 9" CENTERS INSTALLED
VERTICALLY ACROSS ROOF FRAMING &
FASTENED WITH #10 x 3/4" MIN SELF
DRILL COATED SCREW W/WASHER INTO
ROOF PANEL PLATES & BELTLINES

2024-01-18 TOP LINE ENGINEERING, LLC APPROVAL

TOP LINE ENGINEERING, LLC

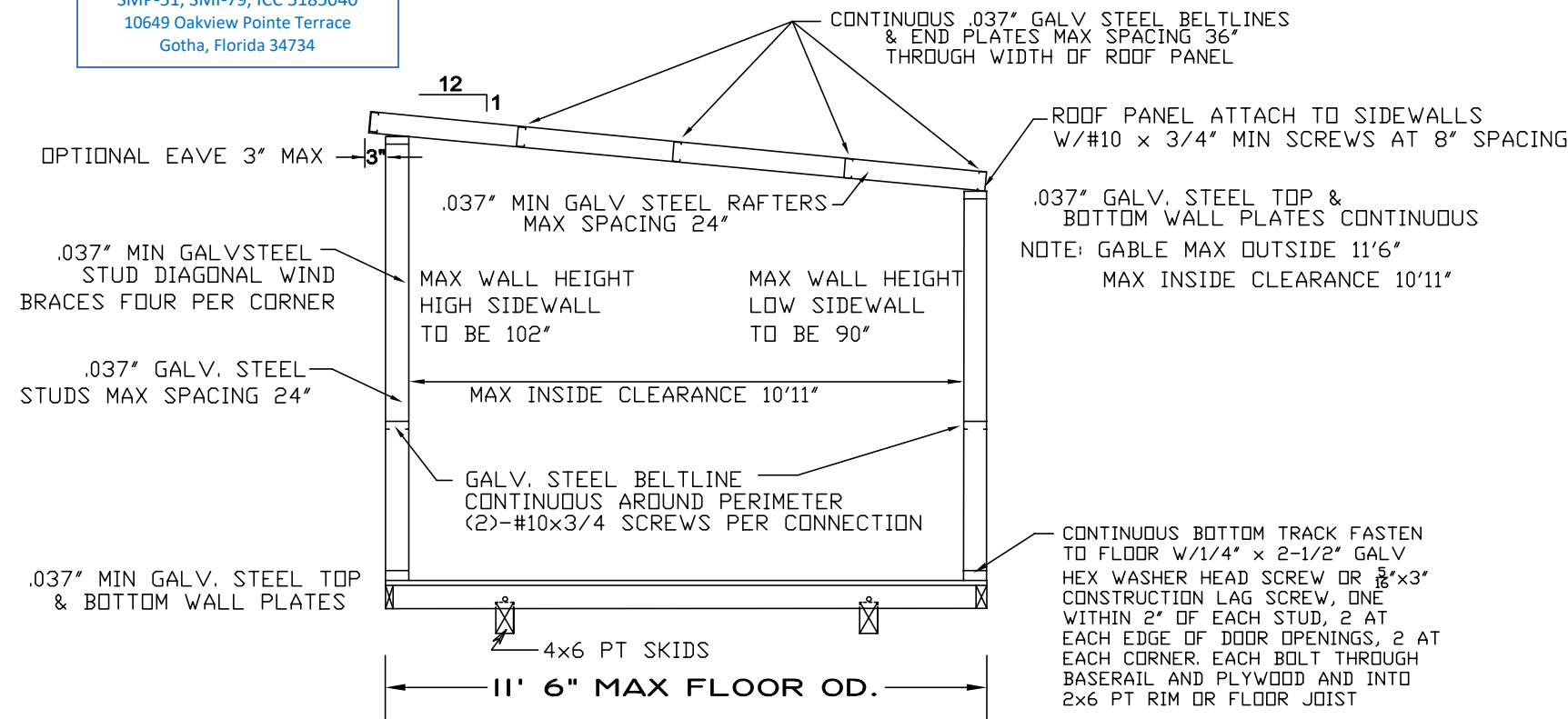
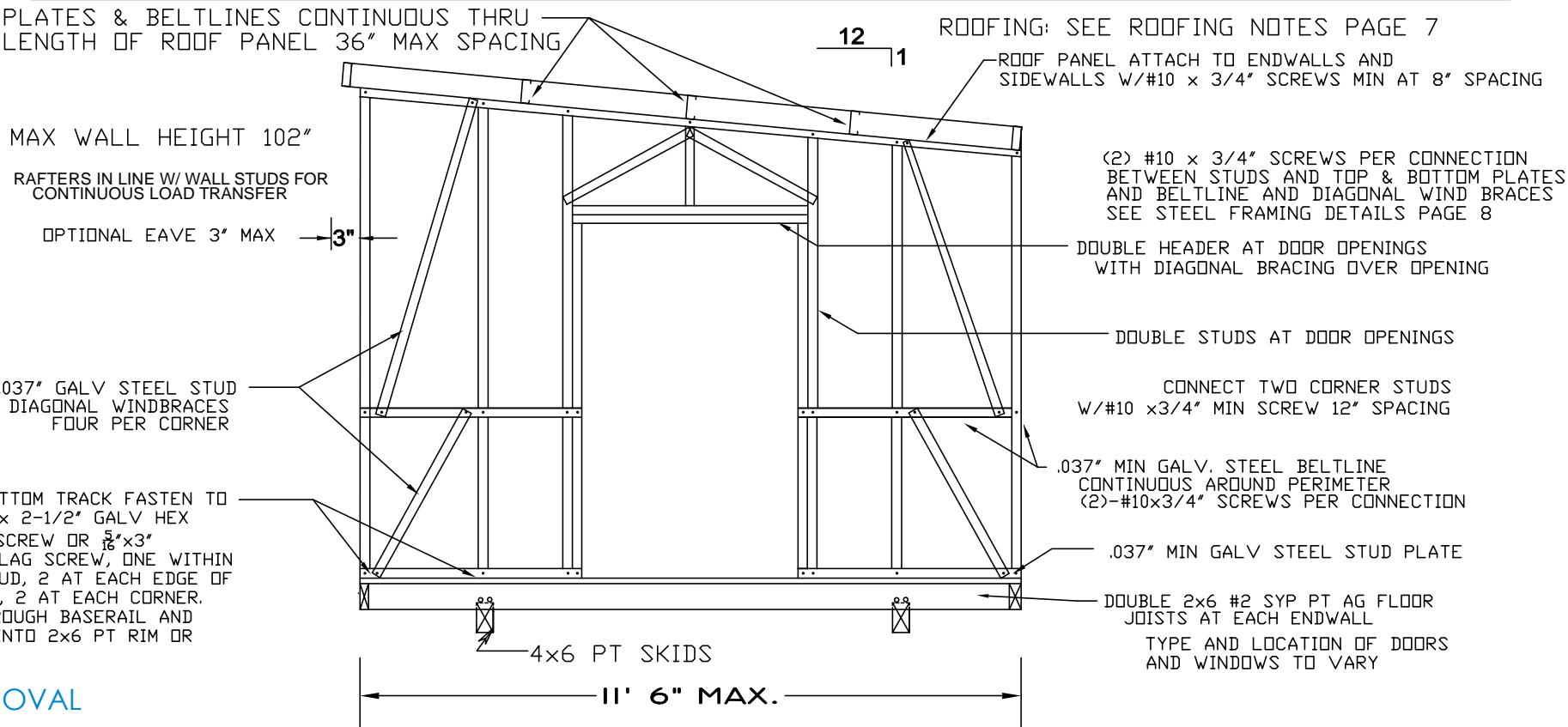
STRUCTURAL ENGINEERS

William E. Neary, III

SMP-51, SMI-79, ICC 5185040

10649 Oakview Pointe Terrace

Gotha, Florida 34734



SIDING NOTES, MONOSLOPE
STEEL FRAMES:

SIDING TO BE 0.014" MIN THICKNESS GR80 KSI MIN
YIELD STRENGTH ASTM A755 AZ 35 GALVALUME
PAINTED STEEL 40.875" COIL WIDTH FORMED INTO
ROBIN BUILDERS R*LAP DUTCH LAP PROFILE 38"
WIDE PANEL, 36" WIDE COVERAGE WITH 1/2" HIGH
RIB ON 6" CENTERS RUN HORIZONTAL ACROSS
WALL FRAMING FASTENED WITH #8 x 1/2" MIN
COATED STEEL SCREWS ON 12" SPACING IN FIELD
OF PANELS, 6" SPACING AT ENDS OF PANEL, 12"
SPACING ALONG FLOOR

OR

SIDING TO BE 0.014" MIN THICKNESS GR80 KSI MIN
YIELD STRENGTH ASTM A755 AZ 35 GALVALUME
PAINTED STEEL 40.875" COIL WIDTH FORMED INTO
ROBIN BUILDERS AG PANEL PROFILE 38" WIDE
PANEL WIDTH, 36" WIDE PANEL COVERAGE WITH 3/4"
HIGH RIB ON 9" CENTERS RUN HORIZONTAL OR
VERTICAL FASTENED WITH #8 x 1/2" MIN COATED
STEEL SCREWS AT 9" OC ALONG FRAMING MEMBERS
OR

LP SMARTSIDE 3/8" PRECISION PANEL FASTENED
WITH ASN 2351S 1.375" x 100 HELICAL VERSAPIN
MIN OR EQUAL AT 6" OC EDGE & 8" OC FIELD
OR

LP SMART LAP SIDING FASTENED WITH ASN 2351S
1.375" x 100 HELICAL VERSAPIN MIN OR EQUAL
BLIND NAILED OVER 0.105" THERMO-SHEATHING or
7/16" OSB WALL SHEATHING AT 6" OC EDGE & 8" OF
FIELD

General Notes					
		<i>ROBIN BUILDERS, INC</i>			
		3771 Ga Highway 130 E LYONS, GA 30436 (912) 526-3266			
		<i>Kenneth E. Vogan P. E.</i> Florida License No. 53439			
		CONSTRUCTION TYPE	VB	FIRE RATING EXT. WALL:	O
		OCCUPANCY:	UTILITY	PLAN NO:	FBC 2023 8th ED
		ALLOW. # OF FLOORS:	1	ALLOW. FLOOR LOAD:	75
		ULTIMATE WIND VELOCITY:	160	APPROVAL DATE:	10/1/2023
No.		Revision/Issue			Date

Firm Name and Address

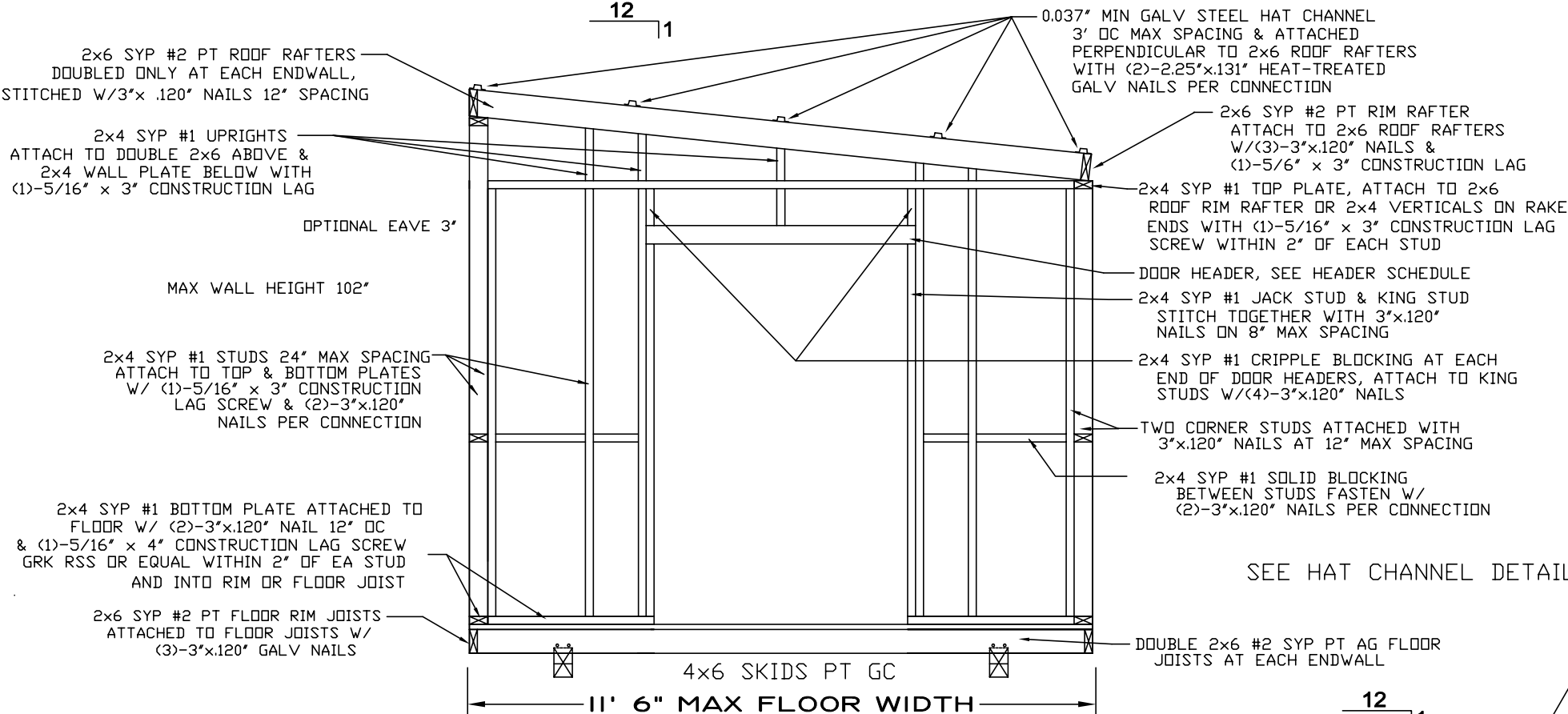
ROBIN BUILDERS, INC.
3771 GA HIWAY 130E
LYONS, GA 30436
912-526-3266

Project Name and Address

FRAMING DETAILS
STEEL MONOSLOPE
23FBCAGV

Project	23FBCAGV	Sheet	10 of 15
Date	10/1/23		
Scale	NONE		

FRAMING: MONOSLOPE ROOF WOOD FRAME

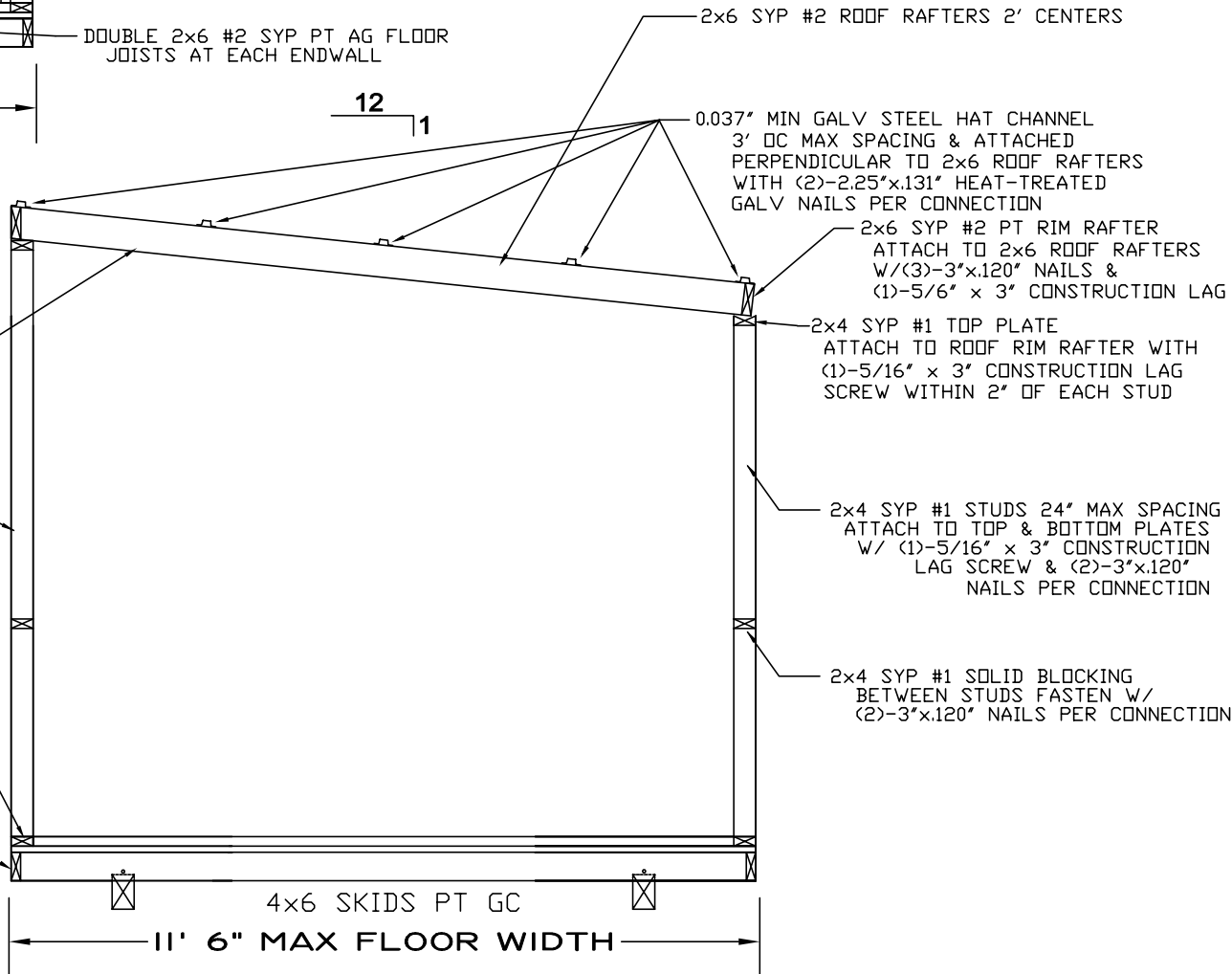


ROOFING NOTES, MONOSLOPE WOOD FRAMES:

ROOFING TO BE 0.014" MIN THICKNESS GR80 KSI MIN YIELD STRENGTH ASTM A792 AZ55 ACRYLIC COATED STEEL OR 0.014" MIN THICKNESS 80 KSI MIN YIELD STRENGTH ASTM A755 AZ35 GALVALUME PAINTED STEEL, BOTH WITH 40.875" COIL WIDTH PROFILED INTO 38" WIDE ROBIN BUILDERS AG PANEL, 36" WIDE COVERAGE, ROLLFORMED WITH 3/4" HIGH RIB ON 9" CENTERS INSTALLED VERTICALLY ACROSS ROOF FRAMING & FASTENED TO HAT CHANNEL WITH #10x3" SELF DRILL COATED SCREW W/WASHER INTO STEEL PLATES & BELTLINES AT 9" SPACING

SEE HAT CHANNEL DETAILS PAGE 4

END WALL FRAMING N.T.S.



CROSS SECTION DETAIL N.T.S.

SIDING NOTES, MONOSLOPE WOOD FRAMES:

SIDING TO BE 0.014" MIN THICKNESS GR80 KSI MIN YIELD STRENGTH ASTM A755 AZ 35 GALVALUME PAINTED STEEL 40.875" COIL WIDTH FORMED INTO ROBIN BUILDERS R* LAP DUTCH LAP PROFILE 38" WIDE PANEL, 36" WIDE COVERAGE WITH 3/4" HIGH RIB ON 6" CENTERS RUN HORIZONTAL ACROSS WALL FRAMING FASTENED WITH #8 x 3/4" COATED STEEL SCREWS ON 12" SPACING IN FIELD OF PANELS, 6" SPACING AT ENDS OF PANEL, 12" SPACING ALONG FLOOR OR

SIDING TO BE 0.014" MIN THICKNESS GR80 KSI MIN YIELD STRENGTH ASTM A755 AZ 35 GALVALUME PAINTED STEEL 40.875" COIL WIDTH FORMED INTO ROBIN BUILDERS AG PANEL PROFILE 38" WIDE PANEL WIDTH, 36" WIDE PANEL COVERAGE WITH 3/4" HIGH RIB ON 9" CENTERS RUN HORIZONTAL OR VERTICAL FASTENED WITH #8 x 3/4" COATED STEEL SCREWS AT 9" OC ALONG FRAMING MEMBERS OR

LP SMARTSIDE 3/8" PRECISION PANEL FASTENED WITH 0.099" x 2" HDG RING NAIL OR EQUAL 6" OC EDGE & 8" OC FIELD OR

LP SMART LAP SIDING FASTENED WITH 0.099" x 2" HDG RING NAIL OR EQUAL BLIND NAILED OVER 0.105" THERMO-SHEATHING OR 7/16" OSB WALL SHEATHING

General Notes				
		ROBIN BUILDERS, INC	Kenneth E. Vogan P. E. Florida License No. 53439	
		3771 Ga Highway 130 E LYONS, GA 30436 (912) 526-3266		
		CONSTRUCTION TYPE	VB	FIRE RATING EXT. WALL: O
		OCCUPANCY:	UTILITY	PLAN NO: FBC 2023 8th ED
		ALLOW. # OF FLOORS:	1	ALLOW. FLOOR LOAD: 75
		ULTIMATE WIND VELOCITY:	160	APPROVAL DATE: 10/1/2023
No.	Revision/Issue			Date

Firm Name and Address

ROBIN BUILDERS, INC.
3771 GA HIWAY 130E
LYONS, GA 30436
912-526-3266

Project Name and Address

FRAMING DETAILS:
WOOD MONOSLOPE
23FBCAGV

Project

23FBCAGV

Sheet

11 of 15

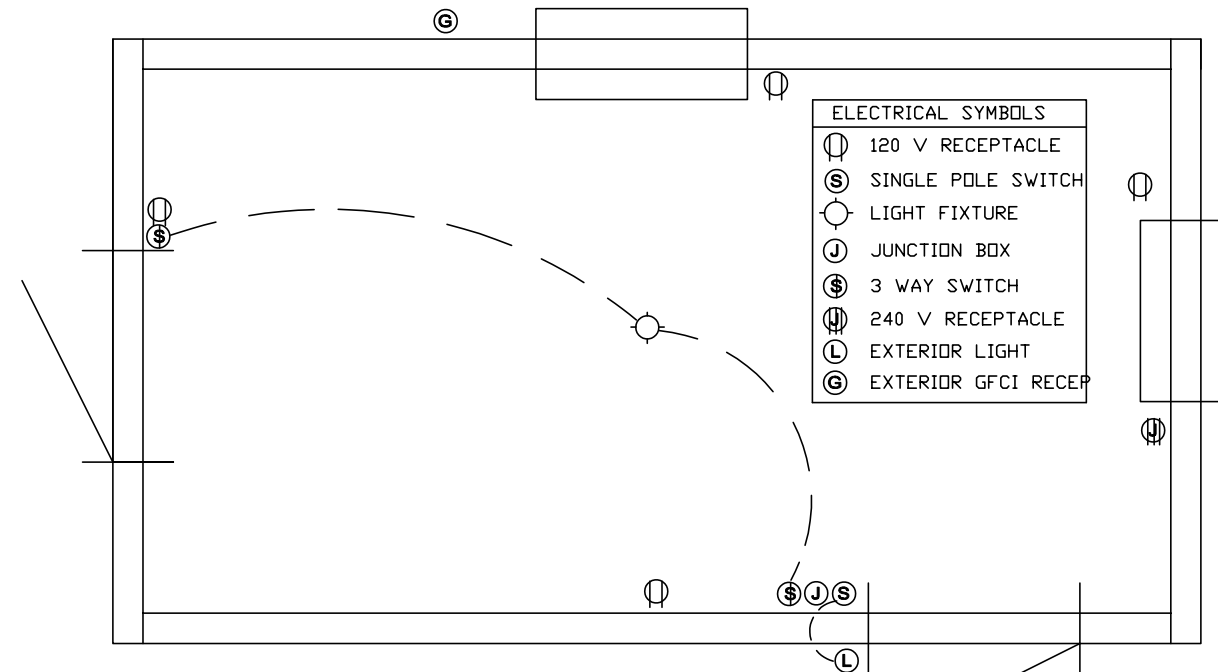
Date

10/1/23

Scale

NONE

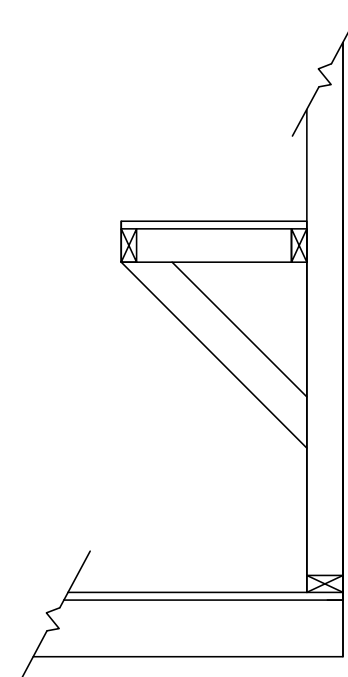
ELECTRICAL DETAILS



ELECTRICAL DETAILS
N. T. S.

ELECTRICAL NOTES:

- 1: AS PER NEC ARTICLE 330.30(b) SECURING OF MC TYPE CABLE. UNLESS OTHERWISE PROVIDED CABLES SHALL BE SECURED AT INTERVALS NOT EXCEEDING 6' AND SHALL BE SECURED WITHIN 12" OF EVERY BOX, CABINET, FITTING OR OTHER CABLE TERMINATION
- 2: ALL WIRING SHALL BE MINIMUM 12 GAUGE COPPER 3-WIRE MC CABLE WITH GROUND
- 3: WIRING ENCASED IN METAL BOXES
- 4: MAXIMUM NUMBER OF OUTLETS PER CIRCUIT: 4
- 5: MAXIMUM NUMBER OF LIGHTS PER CIRCUIT: 4
- 6: FLUORESCENT, LED OR INCANDESCENT LIGHTING
- 7: ELECTRICAL EQUIPMENT IS OPTIONAL, LOCATIONS OF DEVICES MAY VARY
- 8: POWER HOOKUP TO UNIT IS DESIGNED AND INSTALLED ONSITE BY OTHERS & SUBJECT TO LOCAL APPROVAL



PLACEMENT, WIDTH AND HEIGHT VARIES
FRAMING TO BE SYP #1 OR .037"MIN STEEL STUD

WALL SHELVING DETAILS (OPTIONAL)

N. T. S.

TLE TOP LINE ENGINEERING, LLC
STRUCTURAL ENGINEERS

William E. Neary, III
SMP-51, SMI-79, ICC 5185040
10649 Oakview Pointe Terrace
Gotha, Florida 34734

2024-01-18 TOP LINE ENGINEERING, LLC APPROVAL

General Notes

Kenneth E. Vogan P. E.
Florida License No. 53439

ROBIN BUILDERS, INC
3771 Ga Highway 130 E
LYONS, GA 30436
(912) 526-3266

CONSTRUCTION TYPE	VB	FIRE RATING EXT. WALL:	O
OCCUPANCY:	UTILITY	PLAN NO:	FBC 2023 8th ED
ALLOW. # OF FLOORS:	1	ALLOW. FLOOR LOAD:	75
ULTIMATE WIND VELOCITY:	160	APPROVAL DATE:	10/1/2023

No.	Revision/Issue	Date
-----	----------------	------

Firm Name and Address
ROBIN BUILDERS, INC.
3771 GA HIWAY 130E
LYONS, GA 30436
912-526-3266

Project Name and Address
ELECTRICAL DETAILS
OPTIONAL DETAILS
23FBCAGV

Project	23FBCAGV	Sheet
Date	10-1-23	12 of 15
Scale	NONE	

STEEL FRAMING: PORCH OPTIONS

4 12

FASTEN ROOF PANELS TOGETHER AT RIDGE W/ #10x3/4" MIN SCREWS AT 8" OC

CONTINUOUS TOP TRACK FASTEN TO ROOF PANELS WITH #10x3/4" MIN SCREWS 8" SPACING

CONTINUOUS BELTLINE & TOP & BOTTOM PLATES THROUGH ROOF PANEL, MAX SPACING 36", EACH ROOF PANEL TO HAVE MINIMUM OF (2) - DIAGONAL STEEL STUD WIND BRACES

SEE STEEL FRAMING DETAILS PAGE 8

STEEL STUD GABLE TRUSS BOTTOM TRUSS CHORD W/ 5/16"x3" LAG SCREW EACH END & 2' MAX SPACING

4x4 MIN PT POSTS ATTACH TO PORCH END TRUSS W/3"x8" .037" G90 GALV STEEL PLATE W/(4)-2.25"x.131" HT GALV NAILS INTO POST & (4)-#10x3/4 INTO STEEL STUD GABLE END TRUSS

MAX SPAN BETWEEN POSTS 72"

MAX WIDTH OF PORCH END FRAME TRUSS 13'6"

OPTIONAL AMERICANA PORCH DETAILS

N.T.S.

CONNECT ROOF PANEL PLATE TO END TRUSS TOP CHORD W/#10 x 3/4" MIN SCREWS AT 12" MIN SPACING



SEE ROOFING NOTES STEEL FRAMES PAGE 7
SEE SIDING NOTES STEEL FRAMES PAGE 7

PLATES & BELTLINES THRU ROOF PANEL, MAX SPACING 36", EACH ROOF PANEL TO HAVE MINIMUM OF (2)-DIAGONAL STEEL STUD WIND BRACES

PLATES THRU ROOF PANEL, MAX SPACING 36", EACH ROOF PANEL TO HAVE MINIMUM OF (2)-DIAGONAL STEEL STUD WIND BRACES

CONNECT ROOF PANEL PLATE TO END TRUSS TOP CHORD W/#10 x 3/4" MIN SCREWS AT 12" MIN SPACING

LOFT ABOVE PORCH W/STEEL STUD FRAMING WITH 23/32" BC PLYWOOD ABOVE & R*LAP SIDING UNDERNEATH

4x4 MIN SYP PT POSTS ATTACH TO PORCH END TRUSS W/3"x8" .037" G90 GALV STEEL PLATE W/(4)-2.25"x.131" HT GALV NAILS INTO POST & (4)-#10x3/4 INTO STEEL STUD GABLE END TRUSS

MAX SPAN BETWEEN POSTS 72"

MAX WIDTH OF PORCH END FRAME TRUSS 13'6"

OPTIONAL GAMBREL PORCH DETAILS

N.T.S.

General Notes

Kenneth E. Vogan P. E.

Florida License No. 53439

ROBIN BUILDERS, INC

3771 Ga Highway 130 E

LYONS, GA 30436

(912) 526-3266

FIRE RATING EXT. WALL: 0

PLAN NO: FBC 2023 8th ED

ALLOW. FLOOR LOAD: 75

APPROVAL DATE: 10/1/2023

CONSTRUCTION TYPE VB

UTILITY

ALLOW. # OF FLOORS: 1

ULTIMATE WIND VELOCITY: 160

No.

Revision/Issue

Date

Firm Name and Address

ROBIN BUILDERS, INC.

3771 GA HIWAY 130E

LYONS, GA 30436

912-526-3266

Project Name and Address

FRAMING DETAILS:

STEEL PORCH

23FBCAGV

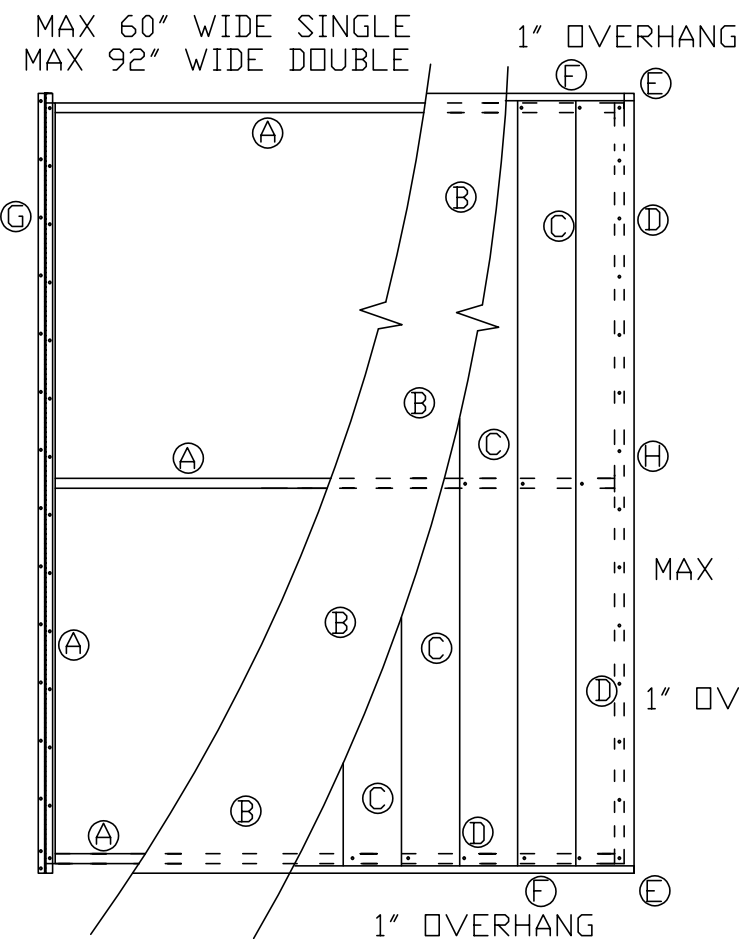
Project 23FBCAGV

Sheet

Date 10-1-23

13 of 15

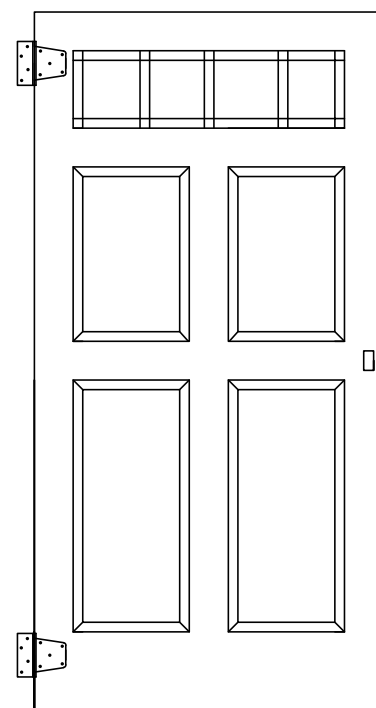
Scale NONE



OPTIONAL ROBIN "WEATHER-TITE" DOOR CONSTRUCTION DETAIL

- A) DOOR FRAME TO BE 1" x 1" SQUARE TUBING .037" MIN 36 KSI GALVANIZED STEEL W/WELDED CORNERS
- B) DOOR SHEATHING INSTALLED BETWEEN 1"x1" STEEL TUBE FRAME AND EXTERIOR FACE OF DOOR TO BE 0.105" THICK INSULATIVE SHEATHING W/PLASTIC FACE
- C) EXTERIOR FACE PANEL OF DOOR TO BE 0.014" PAINTED ASTM A755 STEEL, SPANNING VERTICALLY OVER 1"x1" TUBE FRAME, 36" WIDE PANEL, 6" REPEAT OF 1/2" DEEP CORRUGATION IN DUTCH LAP PROFILE
- D) EXTERIOR PANEL ATTACHED TO 1"x1" FRAME W/ #10 x 3/4" COATED SCREWS AT 6" SPACING ALONG 1"x1" FRAME
- E) EXTERIOR SIDING OF DOOR TO OVERHANG 1"x1" FRAMING BY 1" ON 3 SIDES (OTHER THAN HINGE SIDE)
- F) TOP & BOTTOM OF EXTERIOR FACE OF DOOR TRIMMED W/ 0.014" ASTM A755 STEEL "J" TRIM
- G) ALUMINUM PIANO HINGE TO RUN FULL HEIGHT OF DOOR, 1-1/2" TOTAL WIDTH, 0.040" THICKNESS, .091 HINGE PIN, 1/2" KNUCKLES, ATTACHED THRU EXTERIOR PANEL & SHEATHING INTO 1"x1" STEEL TUBE FRAME W/#10 x 3/4" COATED SCREWS ON 6" SPACING
- H) DOOR LOCK TO BE LOCKING "TEE" HANDLE, CHROME PLATED W/ 1/4" STEEL LOCK SHAFT ATTACHED TO DOOR FRAME W/ (2) -#8 x 1-1/2" PLATED SCREWS. ATTACHED TO LOCK SHAFT TO BE STEEL INSIDE "DEE" HANDLE, .110" THICKNESS PAINTED STEEL, 1" WIDE TO LATCH BEHIND DOOR JAMB.
- I) MAX SINGLE DOOR SIZE 60" WIDE x 79" HIGH
- J) DOUBLE DOORS TO HAVE INACTIVE DOOR SECURED IN CLOSE POSITION BY HEAD AND FOOT BOLT WITH 0.3125" SPRING LOADED STEEL PIN MOUNTED ON 0.098" PLATE ATTACHED TO 1"x1" FRAME W/ (3) -#8 x 1" PLATED SCREWS. STEEL PIN TO INSERT INTO HEADER AND FLOOR 1" DEEP
- K) MAX DOUBLE DOOR SIZE 92" WIDE x 79" HIGH

2024-01-18 TOP LINE ENGINEERING, LLC APPROVAL



TOP LINE ENGINEERING, LLC
STRUCTURAL ENGINEERS
William E. Neary, III
SMP-51, SMI-79, ICC 5185040
10649 Oakview Pointe Terrace
Gotha, Florida 34734

72" HIGH

36" WIDE SINGLE
72" WIDE DOUBLE
4-LITE TRANSOM OPTIONAL

OPTIONAL ROBIN BARN DOOR SINGLE 36" x 72-1/2" & DOUBLE 72" x 72-1/2" DOOR CONSTRUCTION DETAIL

- A) DOOR TO HAVE VINYL FACE, 0.075" THICK ON INTERIOR & EXTERIOR FACES, TEXTURED WOODGRAIN FINISH
- B) DOORS TO BE INSULATED WITH FOAMED IN PLACE URETHANE FOAM
- C) DOOR PANEL TO BE 1-3/4" THICK x 36" WIDE x 72" HIGH
- D) PERIMETER OF DOOR PANEL TO HAVE 1-9/16" x 3/8" THICK PVC EDGE RAILS ALL FOUR EDGES
- E) PERIMETER OF DOOR TO HAVE CONTINUOUS INTERIOR WOOD BLOCKING 1-9/16" x 1-1/8" UNDER PVC EDGE RAILS
- F) DOORS ARE RAISED 6 PANEL EXTERIOR OR RAISED 4 PANEL WITH TRANSOM LIGHT OF HEAT TREATED GLASS
- G) EACH DOOR TO HAVE TWO HINGES, 3-1/2" HEAVY DUTY, .104" STEEL, 1/4" HINGE PIN, BLACK, HIB312B, OR EQUAL W/MINIMUM (4) #10 x 2" COATED BLACK SCREWS EACH LEAF OF HINGE
- H) DOOR LOCK TO BE LOCKING "TEE" HANDLE, BLACK W/ 1/4" STEEL LOCK SHAFT ATTACHED TO DOOR FRAME W/ (2) -#10 x 1-1/2" PLATED BLACK SCREWS. ATTACHED TO LOCK SHAFT TO BE .104" THICKNESS PAINTED STEEL, 1" WIDE INSIDE "DEE" HANDLE TO LATCH BEHIND DOOR JAMB OR INACTIVE DOOR.
- I) MAX SINGLE DOOR SIZE 36" WIDE x 72-1/2" HIGH
- J) DOUBLE DOORS TO HAVE SLAM STRIP, 3" x 72", PVC, SLAM372, OR EQUAL ADDED TO INTERIOR OPEN SIDE OF INACTIVE DOOR, ATTACH WITH MIN #8x1" SCREWS 12" MAX SPACING.
- K) INACTIVE DOOR SECURED IN CLOSED POSITION BY HEAD AND FOOT BOLT WITH 0.3125" SPRING LOADED STEEL PIN MOUNTED ON 0.098" PLATE ATTACHED TO DOOR WITH (4) -#8 x 1-1/2" MIN PLATED SCREWS. STEEL PIN TO INSERT INTO 1" DEEP DRILLED HOLES IN DOOR HEADER AND FLOOR.
- L) MAX DOUBLE DOOR SIZE 72" WIDE x 72-1/2" HIGH

DOOR DETAILS

N. T. S.

General Notes

Kenneth E. Vogan P. E.
Florida License No. 53439

ROBIN BUILDERS, INC
3771 Ga Highway 130 E
LYONS, GA 30436
(912) 526-3266

FIRE RATING EXT. WALL: 0
PLAN NO: FBC 2023 8th ED
ALLOW. FLOOR LOAD: 75
APPROVAL DATE: 10/1/2023

CONSTRUCTION TYPE: VB
OCCUPANCY: UTILITY
ALLOW. # OF FLOORS: 1
ULTIMATE WIND VELOCITY: 160

No. Revision/Issue Date

Firm Name and Address
ROBIN BUILDERS, INC.
3771 GA HIWAY 130E
LYONS, GA 30436
912-526-3266

Project Name and Address
DOOR DETAILS
23FBCAGV

Project 23FBCAGV **Sheet**
Date 10-1-23 **14 of 15**
Scale NONE

BILL OF MATERIALS

2024-01-18 TOP LINE ENGINEERING, LLC APPROVAL

TOP LINE ENGINEERING, LLC
STRUCTURAL ENGINEERS
William E. Neary, III
SMP-51, SMI-79, ICC 5185040
10649 Oakview Pointe Terrace
Gotha, Florida 34734

- SKID LUMBER 4 x 6 SYP #2 PRESSURE-TREATED GROUND CONTACT
- FLOOR JOIST LUMBER 2 x 6 SYP #2 PRESSURE-TREATED ABOVE GROUND
- FLOOR BLOCKING (WHEN REQUIRED) 2X4 OR 2x6 SYP #2 PT ABOVE GROUND
- FLOORING 3/8" UNDERLAYMENT GRADE OR 18MM BC GRADE PLYWOOD (UNTREATED OR TREATED ABOVE GROUND) OR 3/8" ADVANTECH UNDERLAYMENT FLOORING OR EQUAL
- WOOD INTERIOR FRAMING 2x4 MIN SYP #1 BRIGHT
- WOOD INTERIOR FRAMING FOR GAMBREL ROOF PANEL BOTTOM PLATE 2x6 SYP #2 PT ABOVE GROUND
- WOOD EXTERIOR FRAMING ON WOOD PORCH OPTION - 2x4 SYP #2 PT ABOVE GROUND
- WOOD POSTS ON PORCH OPTION - MIN 4x4 SYP #2 PT ABOVE GROUND
- PORCH FLOOR DECKING - 3/4" x 6 RADIUS EDGE DECKING SYP #2 PT ABOVE GROUND OR 1" x 5.5" G2GV-CS COMPOSITE DECKING OR EQUAL
- STEEL STUD INTERIOR FRAMING MATERIAL - 0.037" MIN COMMERCIAL STEEL GRADE B CHEMICALLY-TREATED 33KSI YIELD STRENGTH, G90 GALVANIZED, SLIT 7.200" WIDE, ROLLFORM & CUT TO LENGTH
- HAT CHANNEL MATERIAL - 0.037" MIN THICKNESS COMMERCIAL STEEL GRADE B CHEMICALLY TREATED 33KSI YIELD STRENGTH G60 GALVANIZED, SLIT 3.812" WIDE, ROLLFORM & CUT TO LENGTH
- EXTERIOR METAL SIDING, 0.014" THICKNESS x 40.875" WIDE COIL, POLYESTER PAINTED HOT DIP ALUMINUM-ZINC ALLOY COATED AZ35 STEEL ASTM A755 GR80 OR EQUAL ROLLFORM INTO ROBIN BUILDERS R*LAP SIDING 1/2" DEEP x 6" REPEAT DUTCH LAP PROFILE, 36" WIDE COVERAGE METAL PANEL
- LP SMART PANEL, 4'x8' VERTICAL SHEETS, STRUC PNL 80C, FL# 9190-R9 OR EQUAL
- LP SMART LAP, 8" WIDE HORIZONTAL LAP SIDING, FL# 9190-R9 OR EQUAL
- LP SMART TRIM, 1 1/2" x 4" SR CEDAR TRIM 28450 OR EQUAL
- LEXAN POLYCARBONATE SIDING, 38" PANEL WIDTH, 36" PANEL COVERAGE WIDTH, 0.032" THICKNESS, COVERLITE MR9, 3/4" HIGH RIB ON 9" CENTERS, BY AMERILUX OR ONDULINE OR EQUAL, MIAMI-DADE NDA No:21-1109.01
- METAL ROOFING 0.014" x 40.875" WIDE COIL, HOT-DIP ALUMINUM-ZINC ALLY COATED ASTM A792 STEEL SHEET GR80 AZ55 ACRYLIC COATED OR EQUAL ROLLFORM INTO 3/4" HIGH RIB x 9" CENTERS ROBIN BUILDERS AG PANEL PROFILE, 36" WIDE COVEAGE METAL PANEL
- METAL ROOFING 0.014" x 40.875" WIDE COIL, POLYESTER PAINTED HOT DIP ALUMINUM-ZINC ALLOY COATED AZ35 STEEL ASTM A755 GR80 OR EQUAL ROLLFORM INTO 3/4" HIGH RIB x 9" CENTERS ROBIN BUILDERS AG PANEL PROFILE, 36" WIDE COVERAGE METAL PANEL
- 1/2" ORIENTED STRAND BOARD, WALL SHEATHING AND ROOF DECKING, 4x8 SHEETS
- APPLE FASTENERS ALUMINUM WINDOWS, SIZE 22" W x 36" H, ATTACH TO BUILDING FRAME WITH #8 x 1" COATED SCREWS AT 12" SPACING, FL# 21990.1 DP INTERPOLATED FOR SIZE 22" WIDE X 36" HIGH, FL# 21990.1 DP +20/-25
- POCAHONTAS ALUMINUM PRODUCTS DD 100 SINGLE DOOR, ATTACH TO BUILDING FRAME WITH #8 x 1" COATED SCREWS, 2 EACH CORNER THEN MAX 12" SPACING, FL# 12903.1 DP +25/-25
- POCAHONTAS ALUMINUM PRODUCTS, 04229101TG4, DECORATIVE TRANSOM LITE
- EAGAN MANUFACTURING, INC, SINGLE DOORS SIZE 36" WIDE & 48" WIDE, MODEL E1HDL, ATTACH TO BUILDING FRAME WITH #8 x 1" SCREWS, 2 EACH CORNER THEN 12" MAX SPACING, FL# 12820, BY COMPARATIVE ANALYSIS DP +21.6/-23.5
- POCAHONTAS ALUMINUM PRODUCTS SH46 PVC WINDOW, ATTACH TO BUILDING FRAME WITH #8 x 1" COATED SCREWS, 2 EACH CORNER THEN 12" MAX SPACING, FL# 17027-R4, DP +45/-50
- ROLL UP COIL DOOR, JANUS DOORS SERIES 750 OR ASTA DOORS MODEL 283 COIL DOOR, ATTACH TO JAMBS WITH (16)-#12 x 1" MIN COATED STEEL SCREWS, FL# 12765.7 OR EQUAL, DP +24.4/-27
- ROLL UP COIL DOOR, TRACHTE MODEL 944, MAX WIDTH 9' 0" WIDE, ATTACH TO JAMBS WITH (16)-#12 x 1" MIN COATED STEEL SCREWS, FL# 8055.1 OR EQUAL, DP +23/-24
- THERMA-TRU CORPORATION, BENCHMARK DOORS, 3'0" x 6'8" PREHUNG, FIBERGLASS SINGLE DOOR, INSWING OR OUTSWING, BLANK OR WITH 9 LITE, ATTACH TO JAMB WITH (10)- #8 x 3" COATED STEEL SCREWS, FL#13459-R6, DP +67/-67, OR EQUAL
- DOOR, JELD-WEN BRAND, CONTOURS STEEL FRENCH, 72" WIDE x 80" HIGH, 15 LITE LOW-E, 4-9/16" JAMB W/BRICKMOLD, ATTACH TO JAMB WITH (12)-#8 x 3" COATED STEEL SCREWS, FL# 12769-R11, OR EQUAL, DP +55/- 55
- DOOR, MASONITE BRAND, STEEL FRENCH, 72" WIDE x 80" HIGH, 15 LITE LOW-E, 4-9/16" JAMB W/BRICKMOLD, ATTACH TO JAMB WITH (12)-#8 x 3" COATED STEEL SCREWS, FL#22521.1, DP +40/-40
- ENTRY LOCK, BRANDYWINE, 154-644, ENTRY LOCK, STAINLESS STEEL, OR EQUAL
- COMBINATION ENTRY LOCK, BRANDYWINE, 831-255, ENTRY LOCK & DEADBOLT KEYED ALIKE, STAINLESS STEEL, OR EQUAL
- PIANO HINGE, ALUMINUM, 0.040" THICKNESS, 1-1/2" TOTAL WIDTH, EACH LEAF 3/4" WIDE, 1/2" KNUCKLES, 73-1/2" LONG, 0.091" PIN DIAMETER, MILL FINISH, OR EQUAL
- DRYLINE TSX (RED) WALL BRACING/WATER-RESISTANT BARRIER/DRAFT STOP, STRUCTURAL SHEATHING, 0.105" THICKNESS, TER 1407-06 SECTION 2.15 FBC-R-20 FLORIDA BUILDING CODE
- TRUSS PLATES, 2-1/2" x 4", .034" MIN THICKNESS, ASTM A653, GRADE 50, G60 OR 30Z30Z STEEL, CH20, TER 2104-03, OR EAGLE OR EQUAL
- TRUSS PLATES, 3" x 6", .034" MIN THICKNESS, ASTM A653, GRADE 50, G60 OR 30Z30Z STEEL, CH20, TER 2104-03, OR EAGLE OR EQUAL
- TRUSS PLATES, 5" x 10", .045" MIN THICKNESS, ASTM A653, GRADE 50, G60 OR 30Z30Z STEEL, CH18, TER 2104-03, OR EAGLE OR EQUAL
- SHINGLES, GAF, ROYAL SOVEREIGN, 3-TAB, FL# 10124-R34, OR EQUAL
- SHINGLES, GAF, TIMBERLINE HDZ, ARCHITECTURAL GRADE, FL# 10124.2, OR EQUAL
- SHINGLES, TAMKO HERITAGE TSC, ARCHITECTURAL GRADE, FL# 18355.1, OR EQUAL
- ROOFING UNDERLAYMENT, GRIP RITE 15-GRE, FL# 12510-R12, OR EQUAL, DP +N/A/-75
- INSULATION, R-FOIL REFLECTIVE INSULATION FOR FLOORS WALLS ROOF, 2520 SERIES, DOUBLE BUBBLE, CLASS 1 CLASS A, FLAME SPREAD+0, SMOKE DEVELOP=15, OR EQUAL
- STEEL TUBING, 1" x 1" SQUARE, .037" MIN THICKNESS, GALVANIZED G60, ACRYLIC-COATED, 33KSI,

- OR EQUAL
- SIMPSON H2A HURRICANE TIE OR EQUAL FL# 10446-16
- PORCH POST MOUNTING PLATES, 3" x 8", 0.037" MIN THICKNESS, COMMERCIAL STEEL GRADE B, CHEMICALLY-TREATED 33KSI YIELD STRENGTH, MIN G60 GALVANIZED
- FLAT METAL STRAPS, 1-1/2" WIDE x 12" LONG, AA, 0.0185" MIN STEEL, CSB, 33 KSI, GALVALUME AZ35 OR G60 GALVANIZED, OR EQUAL
- NAIL, 6539, DS30131, 3" x .131", BRIGHT, SMOOTH, OR EQUAL
- NAIL, 6635 DS30131HDGS, 3" x .131", HOT DIP GALV, SCREW, OR EQUAL
- NAIL, 18020, CB20099HDGR, 2" x .099", RING, HDG, OR EQUAL
- NAIL, CB22131HDG-HRD, 2-1/4" x .131", HDG, HEAT TREATED HARDWARE, OR EQUAL
- NAIL, GEN CR25, 1" x .120", SMOOTH, GALV ROOFING NAIL, OR EQUAL
- NAIL, CR38, 1-1/2" x .120, SMOOTH, GALV ROOFING NAIL, OR EQUAL
- NAIL, 9272 CB14086S, 1-1/2" x .086", SCREW, BRIGHT, OR EQUAL
- NAIL, JOIST HANGER, 17134, PP14148HDG, 1-1/2" x .148", HDG, OR EQUAL
- BALLISTIC PIN, 2351S, .100" x 1-3/8" HELICAL SHANK VERSAPIN, OR EQUAL
- BALLISTIC PIN, 2501S, .100" x 2" HELICAL SHANK VERSAPIN, OR EQUAL
- STAPLE, 3605PG P-5/6 16GA 1" CRWON x 3/8", EG, OR EQUAL
- STAPLE, 6806PG M-3/4 3/8" CRWON x 3/4", EG, OR EQUAL
- STAPLE, P10BAB, 1" CROWN x 3/8", 16GA, GALV, OR EQUAL
- STAPLE, M11BAB, 3/8" CROWN x 3/4", 18GA, GALV, OR EQUAL
- STAPLE, M13BAB, 3/8" CROWN x 1", 18GA, GALV, OR EQUAL
- STAPLE, 7664, 7/8" CROWN x 2", 16GA, GALV, OR EQUAL
- SCREW, PRM GRSSF5W5163750, 5/8" x 3", CONSTRUCTION LAG SCREW, COATED BLACK, T-30, OR EQUAL
- SCREW, PRM GRSSF5W5164600, 5/8" x 4", CONSTRUCTION LAG SCREW, COATED BLACK, T-30, OR EQUAL
- SCREW, PRM GRSSF5W5166400, 5/8" x 6", CONSTRUCTION LAG SCREW, COATED BLACK, T-30, OR EQUAL
- SCREW, 08SD04HW4HHSERCC, 8-18x1 1/2" IHWH, 410 SS, SELF DRILL SCREW, 1000HR PLATING, OR EQUAL
- SCREW, 08SD08HWSTLCC, 8-18x1 HEX IHWH STEEL, 1000HR PLATING, SELF DRILL, OR EQUAL
- SCREW, 08SD12HWSTLCC, 8-18x1-1/2" IHWH, STEEL, 1000HR PLATING, SELF DRILL, OR EQUAL
- SCREW, FLOORING, 08F18TFSTLGC17NIBCOL, 8-18x2-1/2", T-25, FLAT HEAD, COARSE THREAD, TY17, HARD, GREEN 1000HR PLATING, COLLATED, OR EQUAL
- SCREW, 08A06HW4HSPCC, 8A x 3/4" IHWH, 410 HARD SS, SELF PIERCE, 1000HR PLATING, OR EQUAL
- SCREW, 08A08HWSTLSPCC, 8A x 1" IHWH, STEEL, 1000HR PLATING, STEEL, SELF PIERCE, OR EQUAL
- SCREW, 08A10HWSTLCCSP, 8A x 1-1/4" IHWH, STEEL, 1000HR PLATING, SELF PIERCE, OR EQUAL
- SCREW, 10SD06SQPANSZSER, 10-16x3/4" SQUARE PANCAKE. STEEL, ZINC PLATE, SELF DRILL, OR EQUAL
- SCREW, 10A06DSTSZSP, 10A x 3/4", DBL SQUARE TRUSS, STEEL, ZINC PLATED, SELF-PIERCE, OR EQUAL
- SCREW, 142HWSAHZ, 14 x 2, IHWH SLOT, FULL TYPE A, HARD, ZINC PLATED, OR EQUAL
- SCREW, 14A150SUXOZ, 14A X 1-1/2", UNSLOTTED, HEW WASHER HEAD, ZINC PLATED, OR EQUAL
- SCREW, 14A200SUXOZ, 14A X 2", UNSLOTTED, HEW WASHER HEAD, ZINC PLATED, OR EQUAL
- SCREW, 25T100TUXOZ/LPT/P881, 1/4-14 x 1", U/S, IHWH, SELF DRILL, ZINC PLATED, OR EQUAL
- SCREW, 10T125TPFX, 10-16 x 1-1/4" PHILLIPS FLAT SDS, #3 POINT, 410SS, OR EQUAL
- SCREW, COMPOSITE DECKING, QD #10 x 2.75" DCU T20 PAINTED GRAY, OR EQUAL
- SCREW, HISCR10200B, HINGE SCREW, #10 x 2", BLACK, OR EQUAL
- SCREW, 793256, #10-16x3/4" SELF DRILL, PLATED, 1/2" BONDED SEALING WASHER, OR EQUAL
- SCREW, 793254, #10-16x3/4" SELF DRILL, PLATED, 1/2" BONDED SEALING WASHER, OR EQUAL
- SCREW, 1303919, #12-14x1-1/2" SELF DRILL, PLATED, 1/2" BONDED SEALING WASHER, OR EQUAL
- SCREW, 1599104, #12-8x1", WOODGRIP XG, 1/2" BONDED SEALING WASHER, OR EQUAL
- SCREW, 1599197, #12-8x1-1/2", WOODGRIP XG, 1/2" BONDED SEALING WASHER, OR EQUAL
- CLOSURE FOAM, 799582, CORRUGATED INNER FOAM, 3/4" HI RIB PROFILE, OR EQUAL
- CLOSURE FOAM, 799598, CORRUGATED OUTER FOAM, WITH ADHESIVE, 3/4" HI RIB PROFILE, OR EQUAL
- BUTYL SEALANT TAPE, 1104-.75, 3/8" x 3/4", TAN, OR EQUAL
- BUTYL SEALANT TAPE, 1104-2, 3/8" x 2", TAN, OR EQUAL
- BUTYL SEALANT TAPE, 1104-2.5, 3/8" x 2-1/2", TAN, OR EQUAL
- HOUSE WRAP, PERMA-R, PERMAWRAP, WATER-RESISTANT BARRIER, ICC ESR-2514 FBC SUPPLEMENT
- BASE CHANNEL FOR SCREEN, BLACK, VINYL, 1-1/2" WIDE, SPLINE SLOTS, 7616-BL-84, OR EQUAL
- CAP COVER FOR SCREEN BASE, WHITE, VINYL, 1-1/2" WIDE, 7617-WH-84, OR EQUAL
- SCREENCLOTH, INSECT SCREENING, CHARCOAL FIBERGLASS, FCS 1816011, 48" WIDE, OR EQUAL
- SCREEN SPLINE, 0.175" DIAMETER, BLACK VINYL, WITH SERRATIONS, OR EQUAL
- PIANO HINGE, 1-1/2" WIDE x 73.5" LONG, 0.040" THICK ALUIMINUM, 1/2" KNUCKLES, 0.091" CONTINUOUS HINGE PIN, OR EQUAL
- BOLT, HEAD & FOOT BOLT FOR ROBIN DOORS, BBSPRINGLD, .3125" PIN, 2.5MM BASE, SPRING LATCH, BLACK, OR EQUAL
- HANDLE, INSIDE DOOR HANDLE, TBACKB-SMALL, .104" STEEL, BLACK, 1-7/8" x 3-3/4", SET SCREW, OR EQUAL
- HINGE, 3-1/2" HEAVY DUTY, .104" STEEL, 1/4" HINGE PIN, BLACK, HIB312B, OR EQUAL
- FLOOD VENT, 16x8, FS-1608, FL# 17588.1
- WALL VENT, 12" x 12", WHITE, LOUVERED, PR12x12W, OR EQUAL
- WALL VENT, 8" x 8", WHITE, LOUVERED, PR8X8, OR EQUAL
- DOOR LOCK, TEE HANDLE, CHROME PLATED ZINC DIE CAST, 1/4" STEEL LOCKSHAFT, TH600CHKA-M, OR EQUAL
- DOOR LOCK, TEE HANDLE, CHROME PLATED ZINC DIE CAST, 1/4" STEEL LOCKSHAFT, H-T309-CW-6, OR EQUAL
- DOOR LOCK, TEE HANDLE, BLACK ZINC DIE CAST, 1/4" STEEL LOCKSHAFT, H-T309-CW-4, OR EQUAL
- SLAM STRIP, 3" x 72", PVC, FOR DOUBLE DOORS, SLAM372, OR EQUAL

General Notes				
		ROBIN BUILDERS, INC 3771 Ga Highway 130 E LYONS, GA 30436 (912) 526-3266	Kenneth E. Vogan P. E. Florida License No. 53439	
		CONSTRUCTION TYPE	VB	FIRE RATING
		OCCUPANCY:	UTILITY	EXT. WALL: 0
		ALLOW. # OF FLOORS:	1	PLAN NO: FBC 2023 8th ED
		ULTIMATE WIND VELOCITY:	160	ALLOW. FLOOR LOAD: 75
				APPROVAL DATE: 10/1/2023
No.	Revision/Issue			Date

Firm Name and Address

ROBIN BUILDERS, INC.
3771 GA HIWAY 130E
LYONS, GA 30436
912-526-3266

Project Name and Address

BILL OF MATERIALS
23FBCAGV

Project

23FBCAGV

Sheet

Only

10-1-23

15 of 15

Scale

NONE