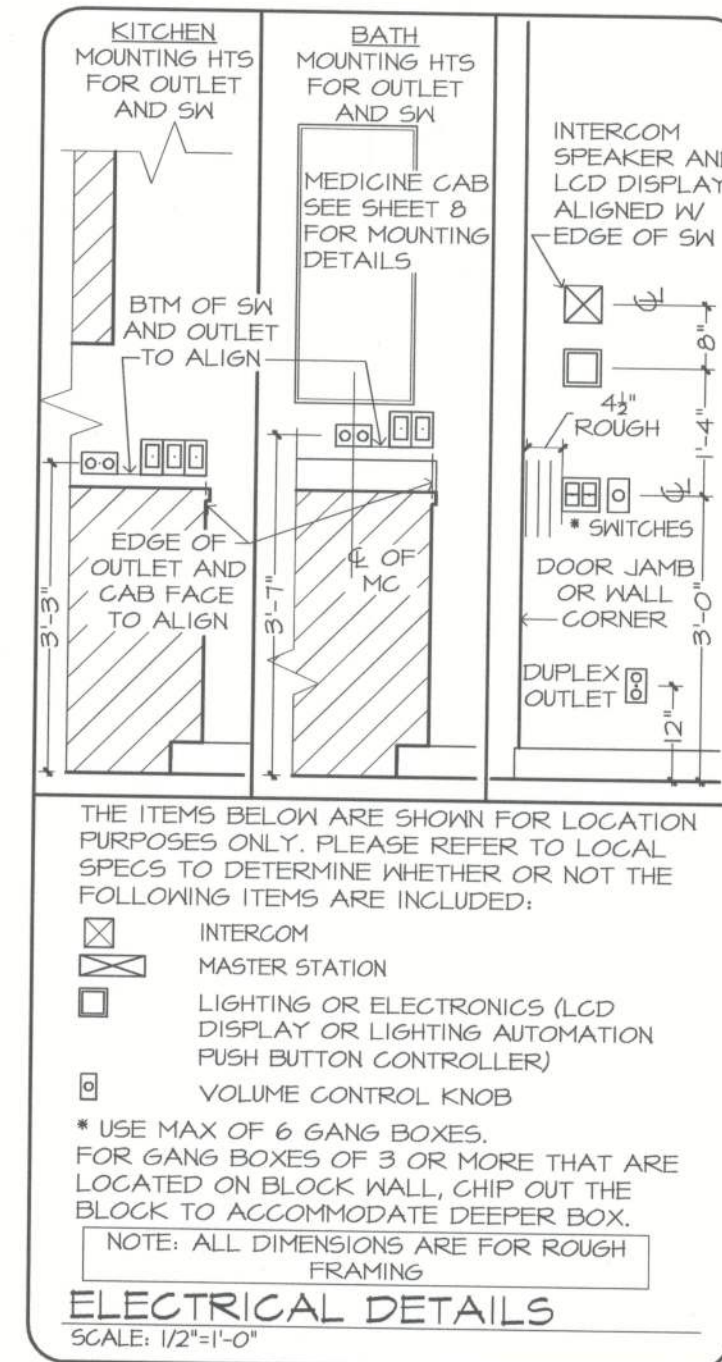


THE DUCT ROUTING AND HVAC EQUIPMENT SHOWN ON THESE DRAWINGS ARE DIAGRAMMATIC ONLY. THE BUILDER IS SOLELY RESPONSIBLE FOR COORDINATING ALL ASPECTS OF MECHANICAL INSTALLATION WITH ALL TRADES. THE BUILDER SHALL COORDINATE BETWEEN THE PRE-ENGINEERED TRUSS MFR. AND/OR FRAMING REQUIREMENTS WITH THE MECHANICAL CONTRACTOR TO ENSURE ADEQUATE SPACE FOR DUCT ROUTING AND EQUIPMENT PLACEMENT AND SUPPORT. HVAC INSTALLATION SHALL BE INSTALLED ACCORDING TO ALL CURRENT STATE AND LOCAL MECHANICAL CODES.



 Arthur Rutenberg<sup>®</sup>  
Homes

COPYRIGHT  
ARTHUR RUTENBERG HOMES, INC.  
ALL RIGHTS RESERVED

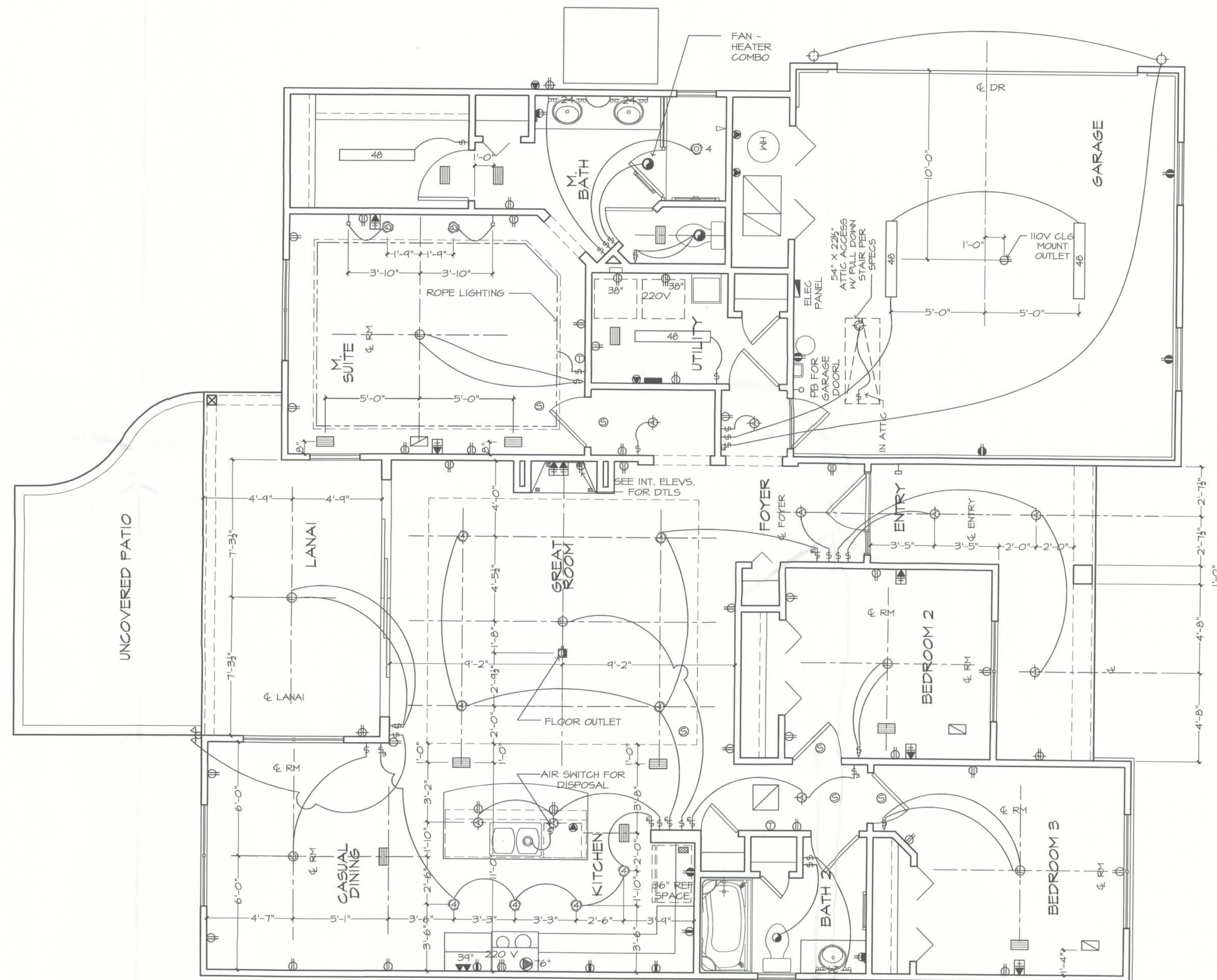
|                   |
|-------------------|
| 01/06/12 B.M. - A |
|                   |
|                   |
|                   |
|                   |

[illegible]

**THE CLOVER 1199F - COLEMAN RESIDENCE**  
 BUILDER: BRYAN ZECHER HOMES, INC.  
 LAKE CITY, FLORIDA  
 AN INDEPENDENTLY OWNED AND OPERATED FRANCHISE

|                      |              |
|----------------------|--------------|
| ELECTRICAL PLAN      | 1/4" = 1'-0" |
| PLAN (REV. 2-01 '02) |              |

7



● DUPLEX OUTLET (110V AT 12" OR AS NTD)  
 ● DUPLEX OUTLET (110V AT 34")  
 ● DUPLEX OUTLET (110V AT 43")  
 ● DUPLEX OUTLET (110V AT 45")  
 ● SPLIT DUPLEX OUTLET (110V AT 12") TOP IS "HOT"  
 ● WEATHERPROOF DUPLEX OUTLET (110V AT 12")  
 ● WEATHERPROOF DUPLEX OUTLET (110V AT 12")  
 ● TOP PLUG IS HOT  
 ● 220V OUTLET AT 30"  
 ● RECESS FLOOR OUTLET  
 ● SPECIAL PURPOSE CONN.  
 ▲ TELEPHONE OUTLET AT 12" OR AS NTD  
 ■ STRUCTURED WIRE COMBO OUTLET  
 ■ WALL OR FL MOUNT  
 ■ STRUCTURED WIRE GUAD COMBO OUTLET  
 5W SEE ELEC. DTL  
 3-MAY SW SEE ELEC. DTL  
 4-MAY SW SEE ELEC. DTL  
 1-GANG COMBINATION FAN / LIGHT SWITCH  
 -0 PUSH-BUTTON FOR GARAGE DOOR AT 60"  
 -0 DIMMER SW AT 36"  
 -1 PUSH-BUTTON DOORBELL (DELETE I/V INTERCOM)  
 ● GL6 MNT LT FIXTURE  
 ● GL6 MNT PEXNAIRE - FIXTURE BY OWNER  
 ● SURFACE MNT FIXTURE  
 ● WALL MNT FIXTURE  
 ● ROUND RECESS FOR TUB/SHOWER  
 ● ROUND RECESS OPEN BAFFLE  
 TRIM (INTERIOR FLAT)  
 ● MINI ROUND RECESS OPEN BAFFLE  
 TRIM (BAR LOCATIONS)  
 ● MINI ROUND RECESS EYEBALL  
 TRIM  
 ● ROUND RECESS REGRESSED EYEBALL  
 (INTERIOR SLOPED GL6)  
 ● MINI HALOGEN (CABINET LOCATIONS)  
 ● GL6 FAN/LIGHT PEXNAIRE AND SWITCHES  
 ● SMOKE & CARBON MONOXIDE DETECTOR  
 4-12" UNDER CABT 12"  
 4-24" UNDER CABT 21"  
 4-24" UNDER CABT 24"  
 4-33" UNDER CABT 33"  
 5-24" SINGLE 24" FLUOR STRIP  
 5-36" SINGLE 36" FLUOR STRIP  
 5-40" SINGLE 40" FLUOR STRIP  
 6-24" DOUBLE 24" FLUOR STRIP  
 6-36" DOUBLE 36" FLUOR STRIP  
 6-40" DOUBLE 40" FLUOR STRIP  
 24" GL6 MNT FLUOR. LT, WRAPPED  
 40" GL6 MNT FLUOR. LT, WRAPPED  
 24" VANITY LIGHTING (SEE SPECS)  
 36" VANITY LIGHTING (SEE SPECS)

- ▶ EXHAUST FAN / LIGHT FIXTURE COMBO
- ▶ EXHAUST FAN
- ▶ SOFFIT MNT FLOOD LIGHT
- ▶ CLG MNT SPEAKER
- ▶ CHIMES ( DELETE W/ INTERCON )
- ▶ ELEG PANEL
- ▶ STRUCTURED WIRING PANEL
- ▶ CLG RETURN AIR
- ▶ A/C REGISTER
- ▶ THERMOSTAT
- ▶ SECURITY PAD
- \* NOTE: ALL OUTLETS ABOVE COUNTERS SHALL BE MOUNTED HORIZONTALLY
- \* NOTE: ALL EXTERIOR OUTLETS, WALL OUTLETS IN GARAGE, KITCHENS, BATHROOMS AND ALL OUTLETS WITHIN 6'-0" OF A WATER SOURCE SHALL BE 6-F.I.
- \* ALL NON-GFI OR 220V OUTLETS ARE FREIGHTED BY AN ARC-FAULT CIRCUIT INTERRUPTER, ALL LIGHTS TO CENTERLINE AFF
- \* NOTE: LIGHTS, FANS, SMOKE DETECTORS, A/C SUPPLIES AND RETURN AIRS TO BE PLACED ON CENTERLINES OF DOORS, KDWS AND HALLWAYS TYPE UNO
- \* NOTE: SMOKE DETECTORS SHALL BE INSTALLED PER NFPA242 AND 2007 FBC-R SECTION R313.
- \* NOTE: COORDINATE LOCATION OF ALL REQ. ELECTRICAL, CABLE, AUDIO/VIDEO & DATA RACKS, W/ MOUNTING HARDWARE & MFR. INSTALLATION REQ. FOR ALL FLAT PANEL DISPLAYS.