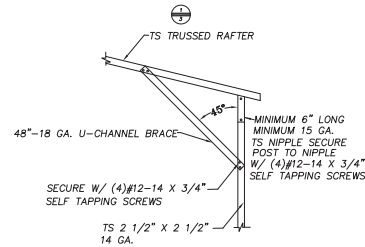
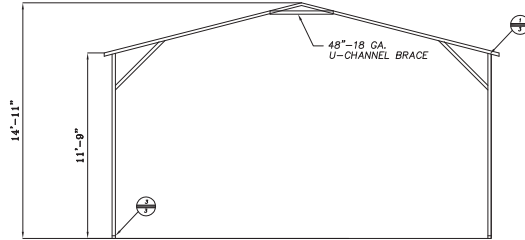
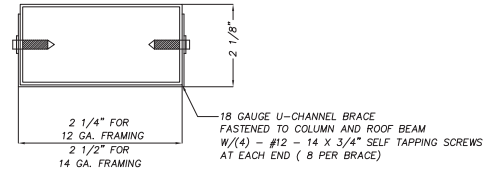


# 24' X 40' BUILDING

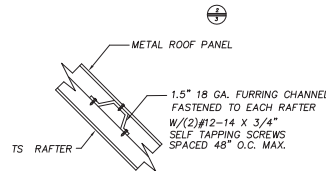
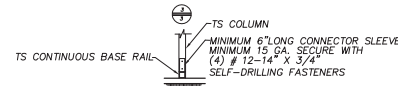
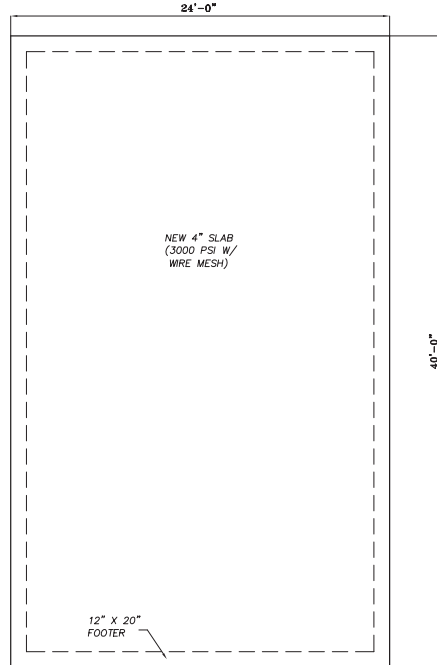


## BEAM CROSS SECTION

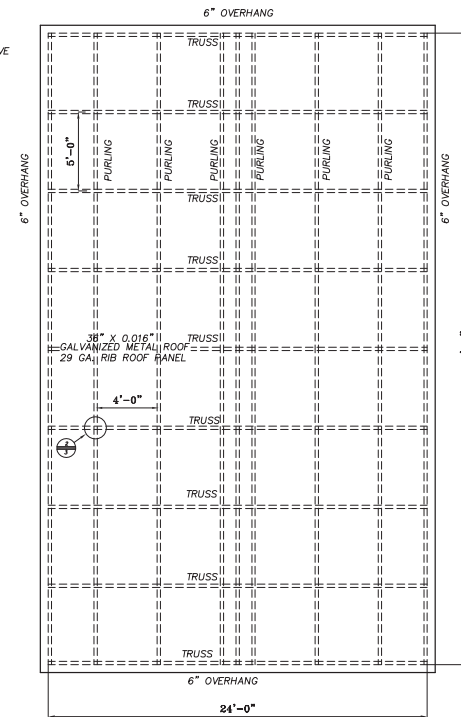


## NOTES:

1. ALL FRAMING MEMBERS ARE 2.5" X 2.5" - 14 GA. TS U.N.O.
2. ALL PURLINGS ARE 1.5" - 18 GA. HAT CHANNELS

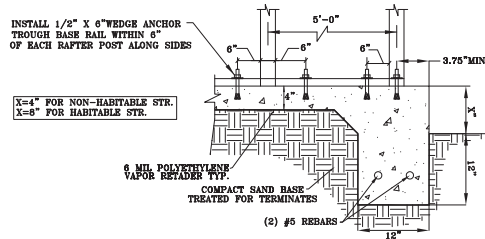


## ROOF PLAN



## CONCRETE MONO SLAB BASE RAIL ANCHORAGE

NOT TO SCALE



## GENERAL NOTES:

### CONCRETE

CONCRETE SHALL HAVE A MINIMUM SPECIFIED COMPRESSIVE STRENGTH OF 3000 PSI AT 28 DAYS COVER OVER REINFORCING STEEL

FOR FOUNDATIONS: MINIMUM CONCRETE COVER OVER REINFORCING BARS SHALL BE PER ACI 318 3 INCHES IN FOUNDATION WHERE THE CONCRETE IS IN CONTACT WITH EARTH, OR EXPOSED TO THE EARTH OR WEATHER, AND 1 1/2 INCHES ELSEWHERE.

### REINFORCING STEEL

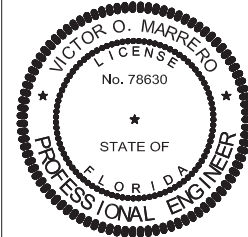
THE TURNDOWN REINFORCING STEEL SHALL BE ASTM A615 GRADE 60. SLAB REINFORCEMENT SHALL BE WELDED WIRE FABRIC MEETING ASTM A 185 / OR FIBERGLASS FIBER REINFORCEMENT

REINFORCEMENT MAY BE BENT IN SHOP OR THE FIELD IF:

1. REINFORCEMENT IS BENT COLD
2. THE DIAMETER OF THE BEND, MEASURED ON THE INSIDE OF THE BAR, IS NOT LESS THAN SIX-BAR DIAMETERS
3. REINFORCEMENT PARTIALLY EMBEDDED IN CONCRETE SHALL NOT BE FIELD BENT.



AFFINE ENGINEERING AND SURVEYING, INC.  
CERTIFICATE OF AUTHORIZATION No. 29140



VICTOR O. MARRERO  
FLORIDA P.E. # 78630

Victor O. Marrero  
Digitally signed by Victor O. Marrero  
Date: 2023.08.23 22:52:15 -04'00'

AFFINE ENGINEERING AND SURVEYING, INC.  
SURVEYORS  
158 NW GREEN LANE, LAKE CITY, FLORIDA 33006  
CERTIFICATE OF AUTHORIZATION No. 29140

PREPARED FOR:  
JAVIER LEAL  
LAKE CITY FLORIDA  
COLUMBIA COUNTY

DRAWING 23-013  
SHEET 3