

BUILDING CODE SUMMARY:

7th Edition (2020) Florida Building Code
7th Edition (2020) Florida Mechanical Code
7th Edition (2020) Florida Plumbing Code
7th Edition (2020) Florida Energy Code
2017 National Electrical Code

KIOSK MACHINE - EQUIPMENT ENCLOSURE ONLY - NO OCCUPANCY CLASSIFICATION - SEE DWG EQ-1

- OCCUPANCY LOAD = 0
- NO INTERIOR WORK AREA - EXTERIOR ACCESS PANELS
- NO FLOOR LIVE LOAD - EQUIPMENT LOADS TRANSFERRED DIRECTLY TO FLOOR FRAMING
- GROUND SNOW LOAD - 55 PSF
- CONSTRUCTION TYPE - V
- DESIGNED FOR 145 MPH EXP. C AND 130 MPH EXP. D WIND LOADS PER ASCE 7-10 OR ASCE 7-16
- NO EGRESS (NON-ACCESSIBLE EQUIPMENT ENCLOSURE)
- SEISMIC DESIGN COEFFICIENTS
S_s = 1.75g S₁ = 0.74g

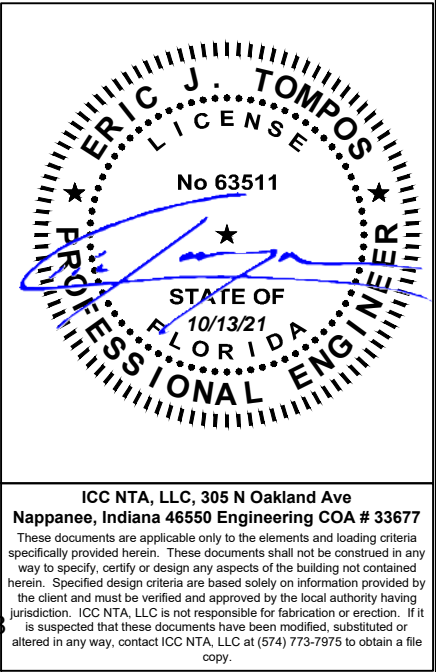
FOUNDATION:

THESE BUILDING PLANS CONTAIN FOUNDATION SUPPORT AND TIE DOWN SYSTEM DETAILS AND SPECIFICATIONS FOR NORMAL STABLE SOIL CONDITIONS. ACTUAL FOUNDATION DESIGN BY OTHERS SHALL CONSIDER SITE SPECIFIC CONDITIONS AS REQUIRED PER THE LOCAL CODE. THE ARCHITECT/ENGINEER OF THE BUILDING PLANS SHALL NOT BE HELD RESPONSIBLE OR LIABLE FOR THE FOUNDATION DESIGN AND THE CONSEQUENTIAL PERFORMANCE OF THE SUPERSTRUCTURES, STRUCTURAL COMPONENTS, AND SYSTEMS RELATING THERETO.

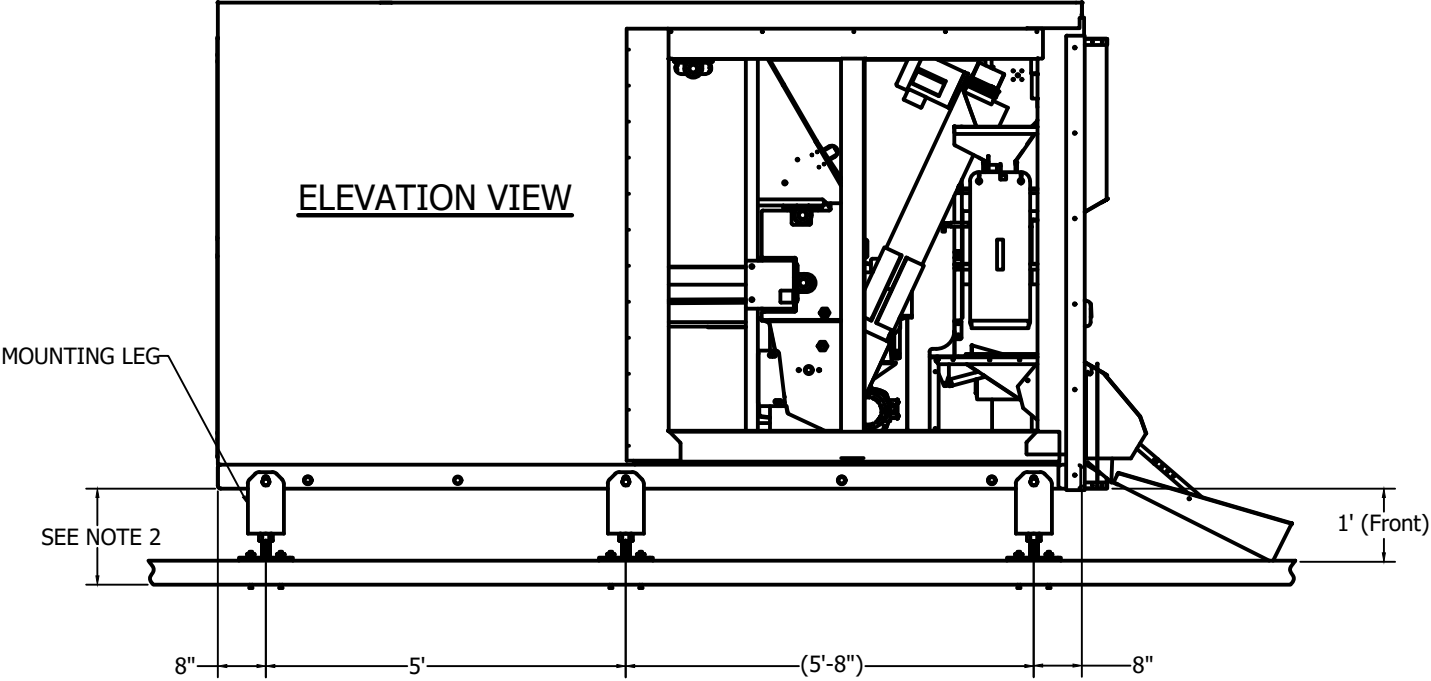
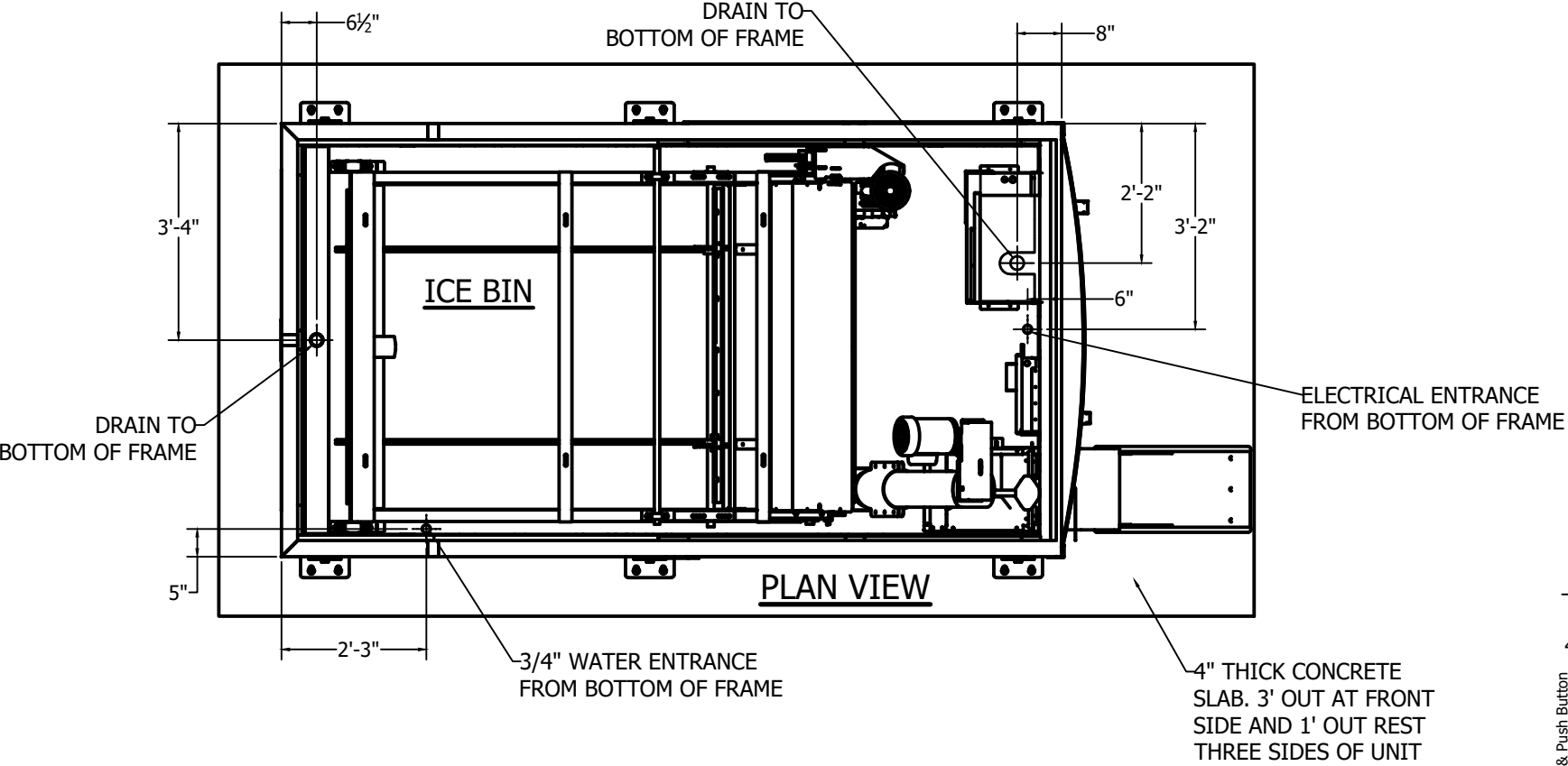
DRAWING LIST:

C-0	COVER SHEET
C-1A	ANCHORING PLAN (CONCRETE MOUNTING LEG)
C-1B	ANCHORING PLAN (SCREW ANCHOR ON DIRT/ASPHALT)
C-1C	ANCHORING PLAN (CONCRETE ANCHORS & TIE DOWN STRAP)
C-1D	ANCHORING PLAN (BLACK PAD PIER PAD)
EQ-1A	EQUIPMENT INFORMATION W/ SEWER DRAINAGE
EQ-1B	EQUIPMENT INFORMATION W/ DRYWELL DRAINAGE
S-1B	OVERALL DIMENSIONS WITH ARCTIC TEMP 5200 ICE MAKER
S-1C	OVERALL DIMENSIONS WITH ARCTIC TEMP 2500 ICE MAKER
S-1D	OVERALL DIMENSIONS BASE KIOSK WITH ARCTIC TEMP ICE MAKER
S-2A	BASE FRAME W/ TIE DOWN BRACKET
S-2B	BASE FRAME W/ MOUNTING LEG
D-1	FRAME PLAN DETAILS
D-2	FRAME PLAN DETAILS
D-3	FRAME PLAN DETAILS
D-4	FRAME PLAN DETAILS
D-5	FRAME PLAN DETAILS
D-1A	FOUNDATION DETAILS
D-4A	ANCHOR SYSTEM LAYOUT
D-5A	ANCHOR SYSTEM LAYOUT
A-1A	TOP HAT AWNING ASSEMBLY
A-1B	TOP HAT AWNING W/ 60"H ICE MAKER SCREEN
P-1	PLUMBING LAYOUT
P-2	PLUMBING SCHEMATIC
E-1	ELECTRICAL LAYOUT
E-2B	ELECTRICAL RISER (5200 ARCTIC TEMP ICE MAKER 3 PHASE)
E-2C	ELECTRICAL RISER (5200 ARCTIC TEMP IM W/ PHASE CONVERTOR)
E-2D	ELECTRICAL RISER (2500 ARCTIC TEMP ICE MAKER)
E-3	GROUNDING DETAIL

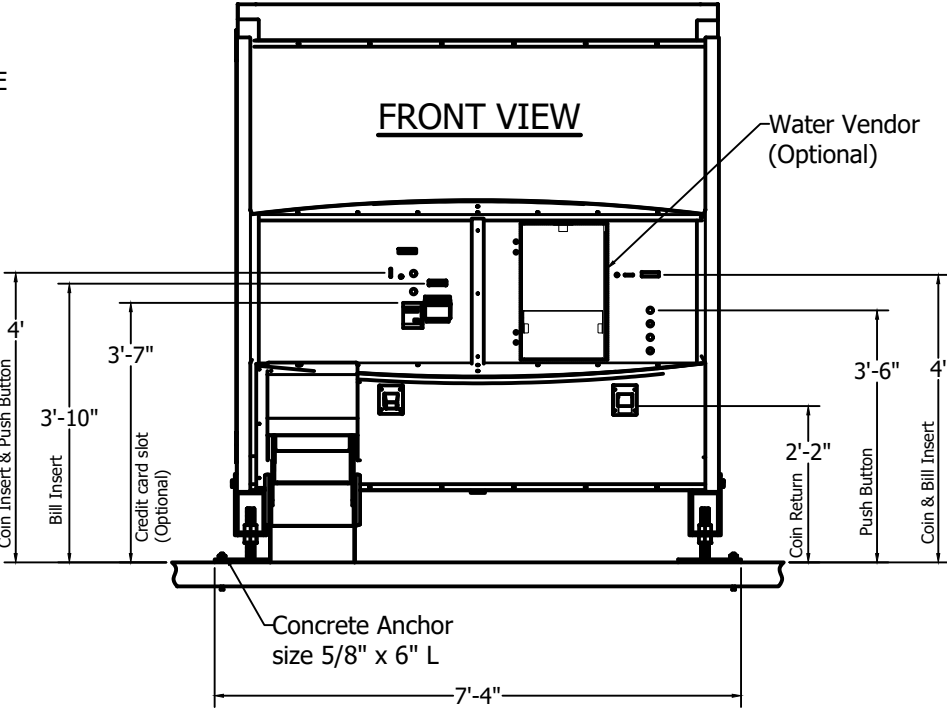
Eric Tompos, PE, SE, P.Eng, CBO, MCP
Digitally signed by Eric Tompos, PE, SE, P.Eng, CBO, MCP
Date: 2021.10.13 16:24:40 -04'00'



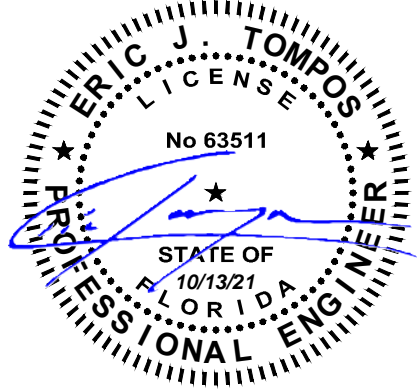
REVISIONS:	SCALE: NTS	APPROVED BY:	Ice House America Jacksonville, FL 32224	TITLE: Coversheet	JOB NO: ICE052521-55
	DATE: 12/10/2020	DRAWN BY: AI		MODEL: 12' IVK	DRAWING NO: C-0



- NOTE:
1. This is a generic site preparation drawing for concrete ground. Local code requirements may vary.
 2. Keep 1" fall from front to rear in order to dispose water in drain line located at rear.
 3. All water & electrical connection dimensions are from end of the base frame.
 4. Mounting legs used with Concrete base only.

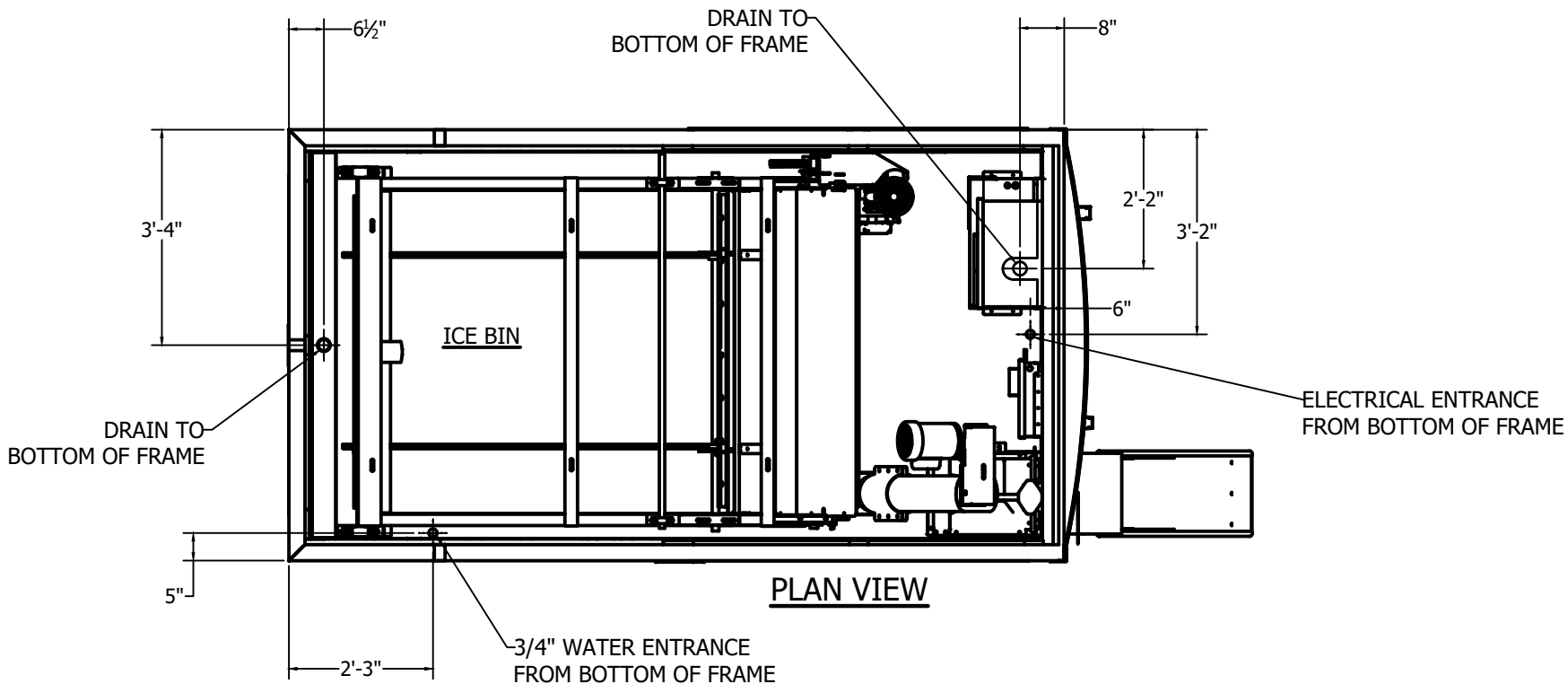


12' KIOSK INSTALLATION ON CONCRETE WITH MOUNTING LEGS
(TOP HAT NOT SHOWN)

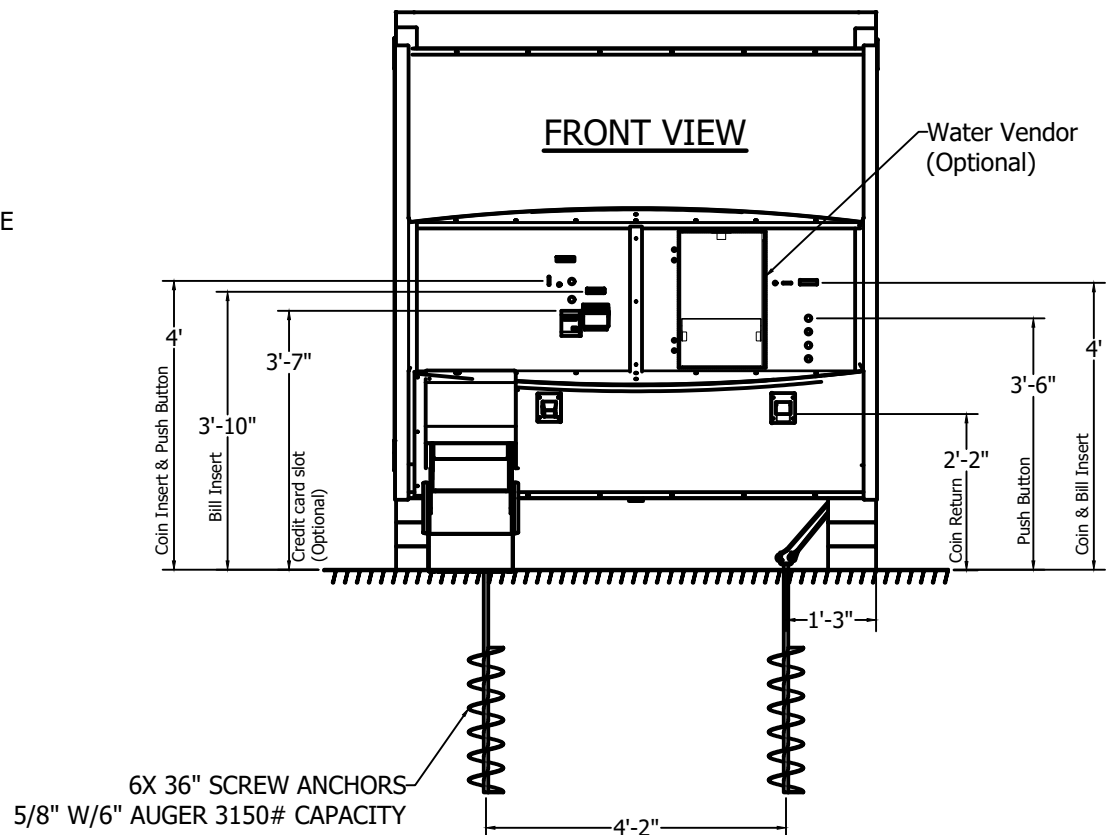


ICC NTA, LLC, 305 N Oakland Ave
Nappanee, Indiana 46550 Engineering COA # 33677
These documents are applicable only to the elements and loading criteria specifically provided herein. These documents shall not be construed in any way to specify, certify or design any aspects of the building not contained herein. Specified design criteria are based solely on information provided by the client and must be verified and approved by the local authority having jurisdiction. ICC NTA, LLC is not responsible for fabrication or erection. If it is suspected that these documents have been modified, substituted or altered in any way, contact ICC NTA, LLC at (574) 773-7975 to obtain a file copy.

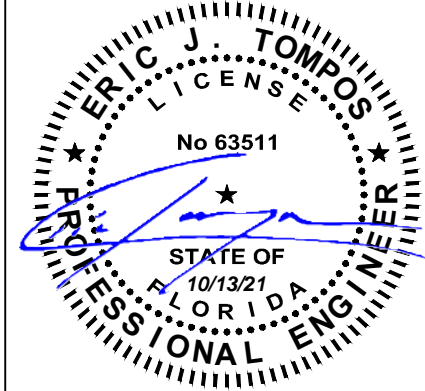
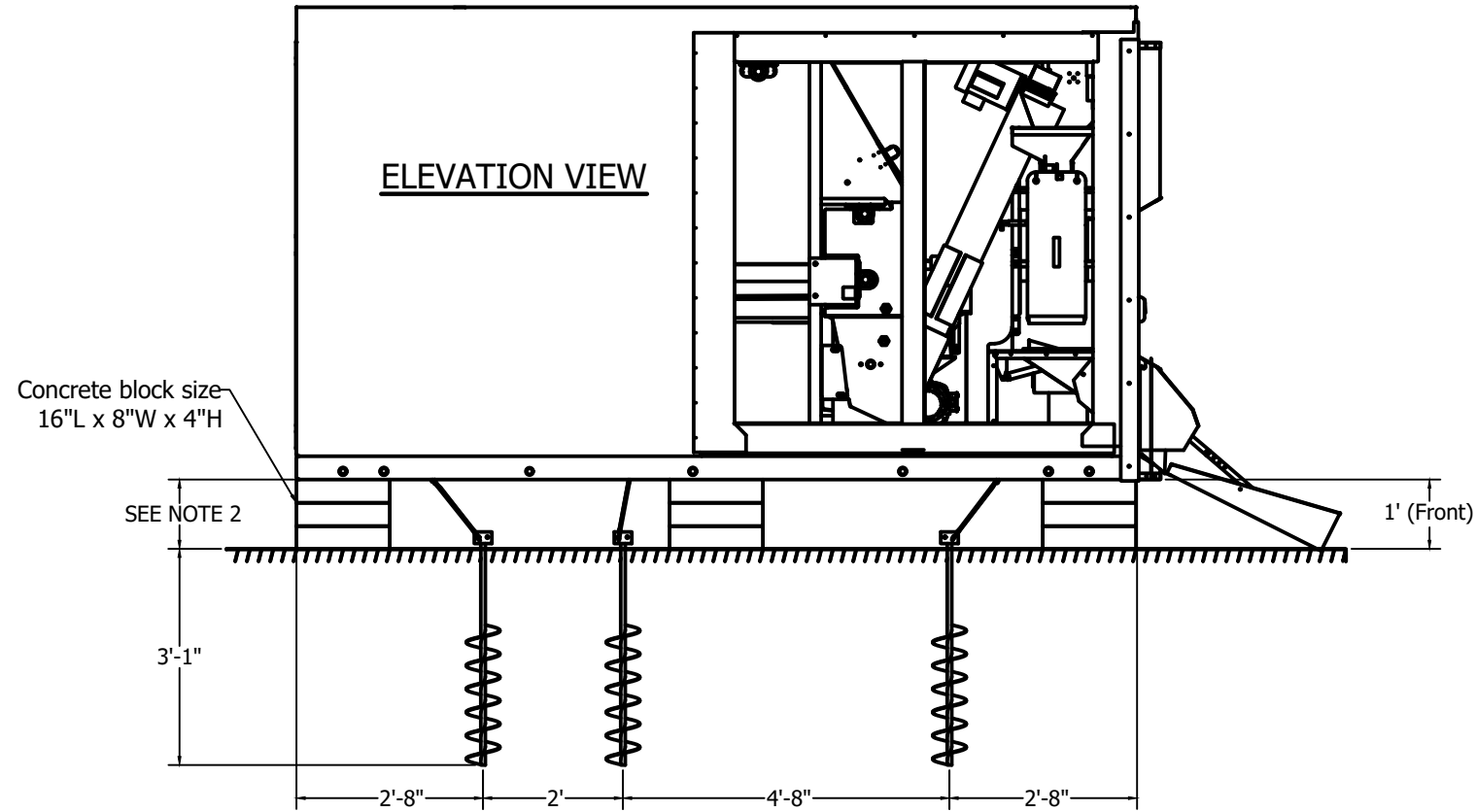
REVISIONS:	SCALE: NTS	APPROVED BY:	Ice House America Jacksonville, FL 32224	TITLE: ANCHORING PLAN (CONCRETE MOUNTING LEG)	JOB NO: ICE052521-55
	DATE: 12/10/2020	DRAWN BY: AI		MODEL: 12' IVK	DRAWING NO: C-1A



- NOTE:
- 1. This is a generic site preparation drawing for dirt or asphalt ground and does not require the concrete foundation. Local code requirements may vary.
 - 2. Keep 1" fall from front to rear in order to dispose water in drain line located at rear.
 - 3. All water & electrical connection dimensions are from end of the base frame.



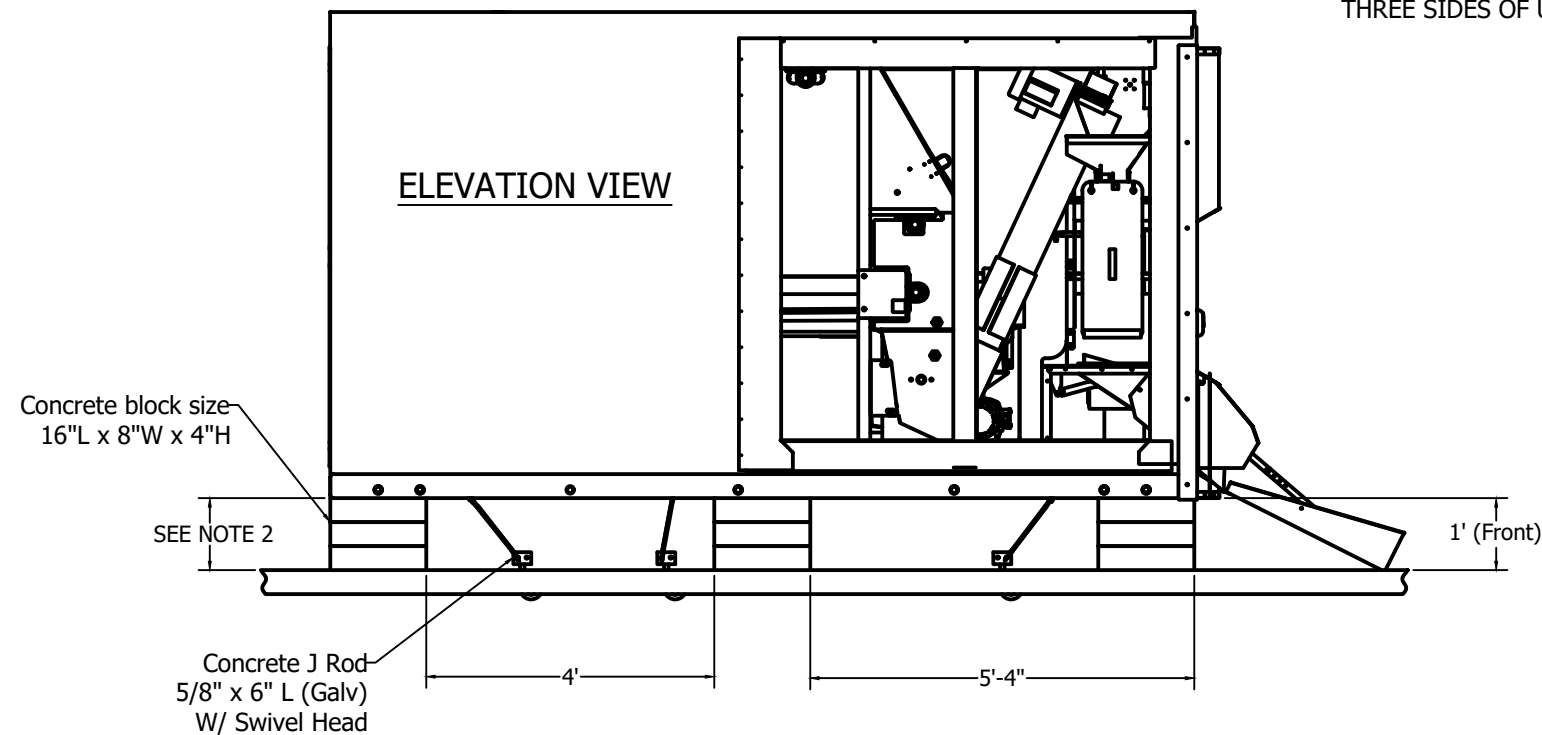
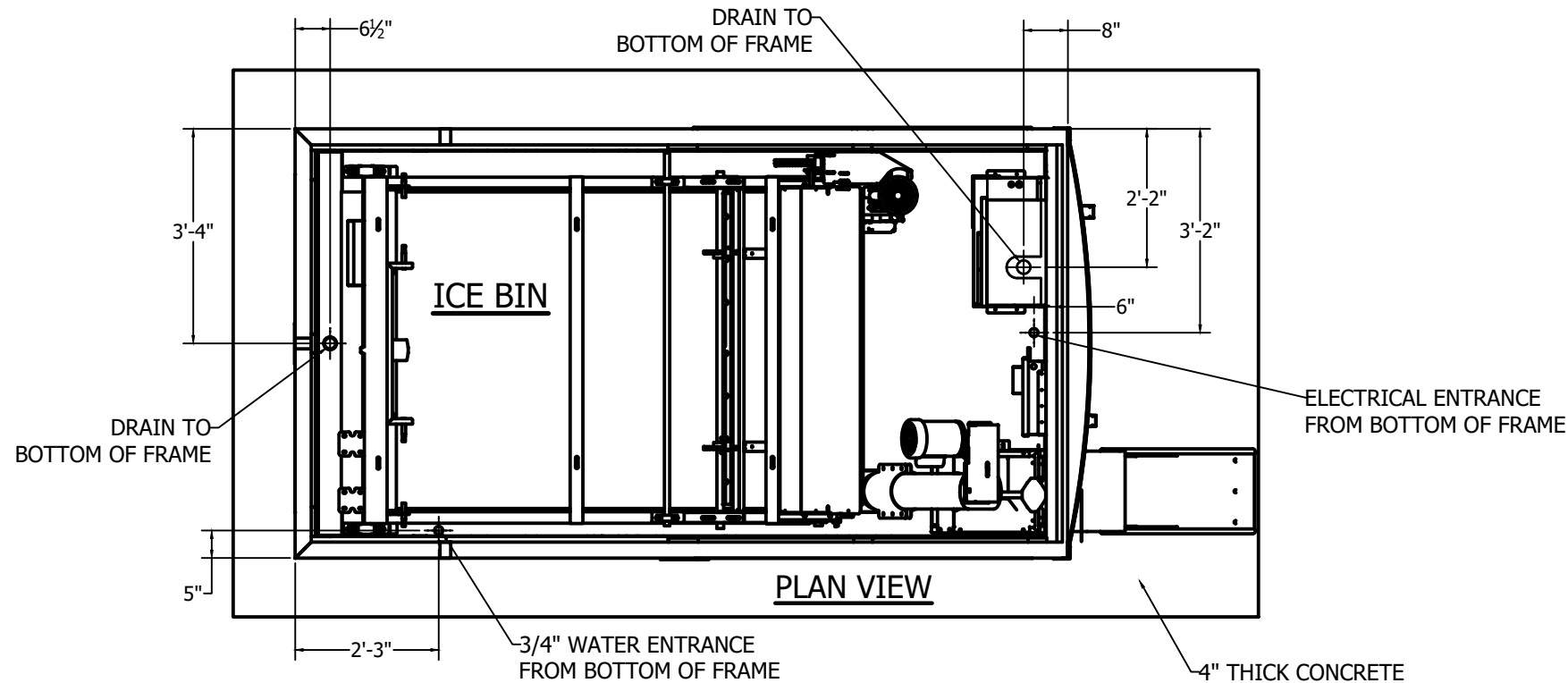
12' KIOSK INSTALLATION ON DIRT/ASPHALT USING SCREW ANCHORS
(TOP HAT NOT SHOWN)



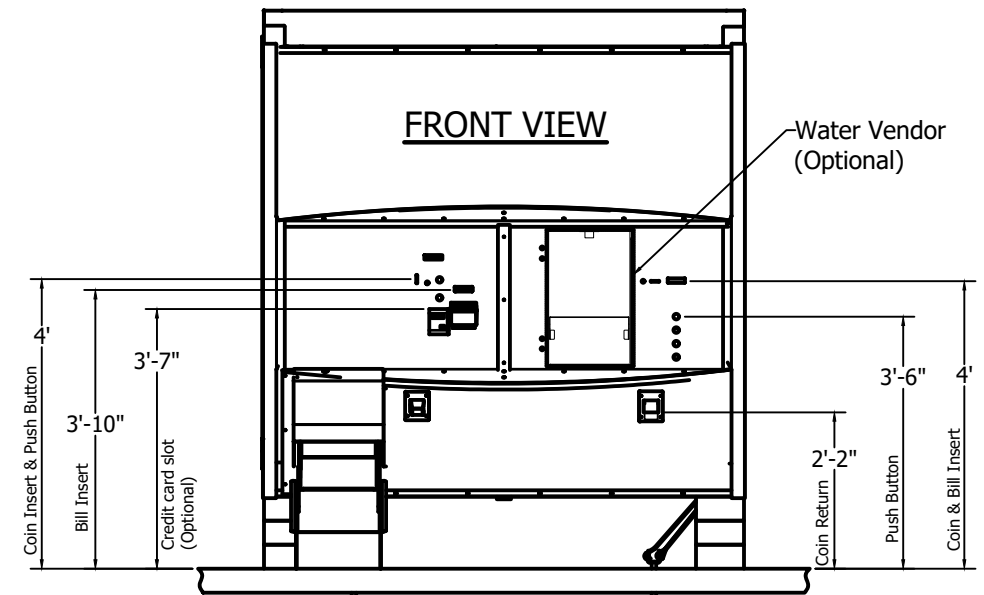
ICC NTA, LLC, 305 N Oakland Ave
Nappanee, Indiana 46550 Engineering COA # 33677

These documents are applicable only to the elements and loading criteria specifically provided herein. These documents shall not be construed in any way to specify, certify or design any aspects of the building not contained herein. Specified design criteria are based solely on information provided by the client and must be verified and approved by the local authority having jurisdiction. ICC NTA, LLC is not responsible for fabrication or erection. If it is suspected that these documents have been modified, substituted or altered in any way, contact ICC NTA, LLC at (574) 773-7975 to obtain a file copy.

REVISIONS:	SCALE: NTS	APPROVED BY:	Ice House America Jacksonville, FL 32224	TITLE: ANCHORING PLAN (SCREW ANCHOR ON DIRT/ASPHALT)	JOB NO: ICE052521-55
	DATE: 12/10/2020	DRAWN BY: AI		MODEL: 12' IVK	DRAWING NO: C-1B



- NOTE:
1. This is a generic site preparation drawing for concrete ground. Local code requirements may vary.
 2. Keep 1" fall from front to rear in order to dispose water in drain line located at rear.
 3. All water & electrical connection dimensions are from end of the base frame.



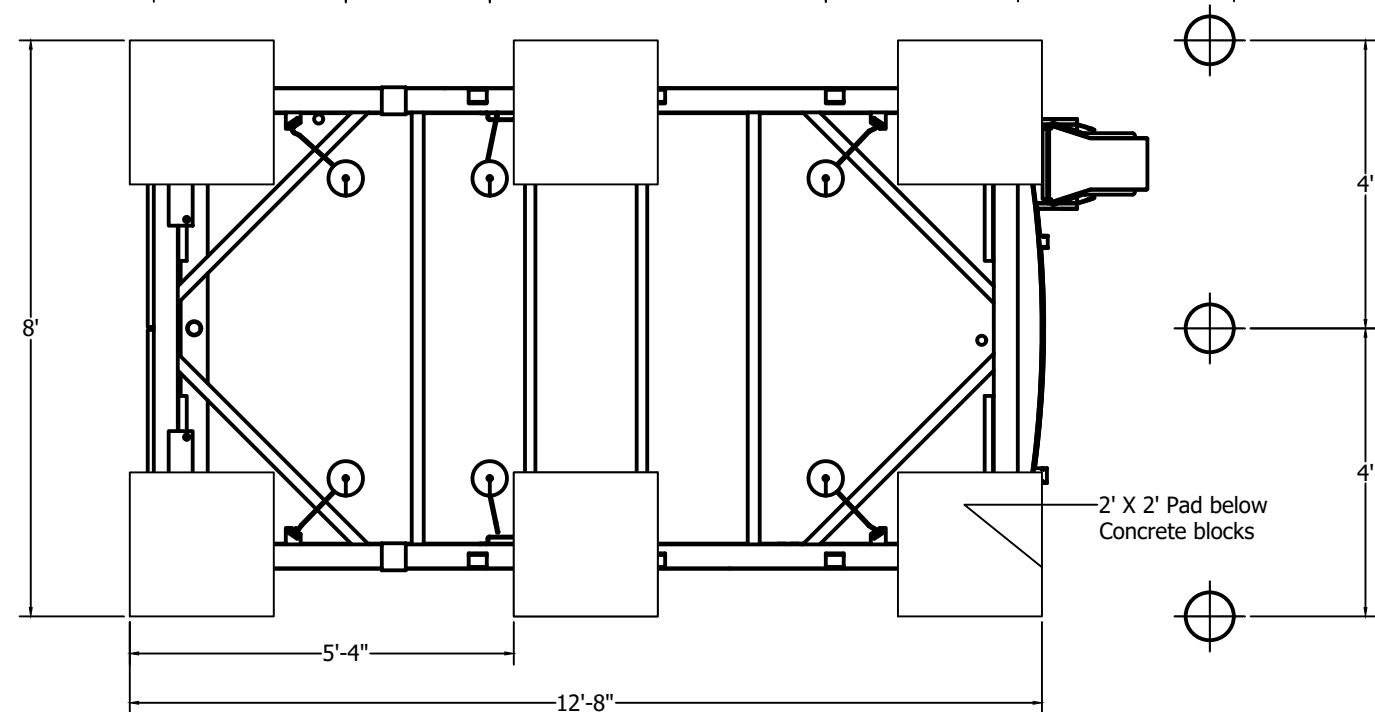
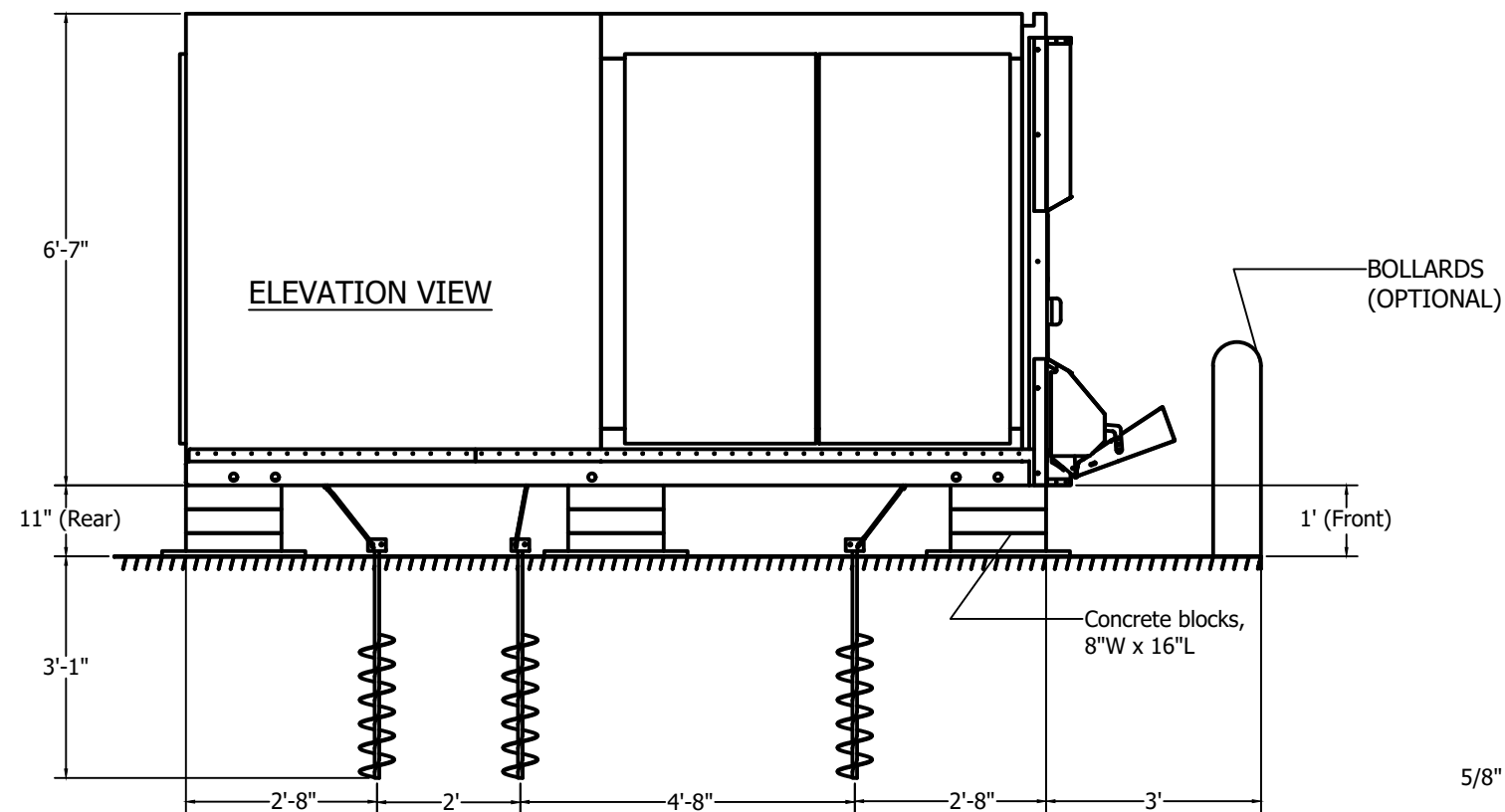
12' KIOSK INSTALLATION WITH CONCRETE ANCHORS & TIE DOWN STRAPS
(TOP HAT, ROOF & ACCESS PANEL NOT SHOWN)

ERIC J. TOMPOS
LICENSE
No 63511
STATE OF FLORIDA
10/13/21
PROFESSIONAL ENGINEER

ICC NTA, LLC, 305 N Oakland Ave
Nappanee, Indiana 46550 Engineering COA # 33677

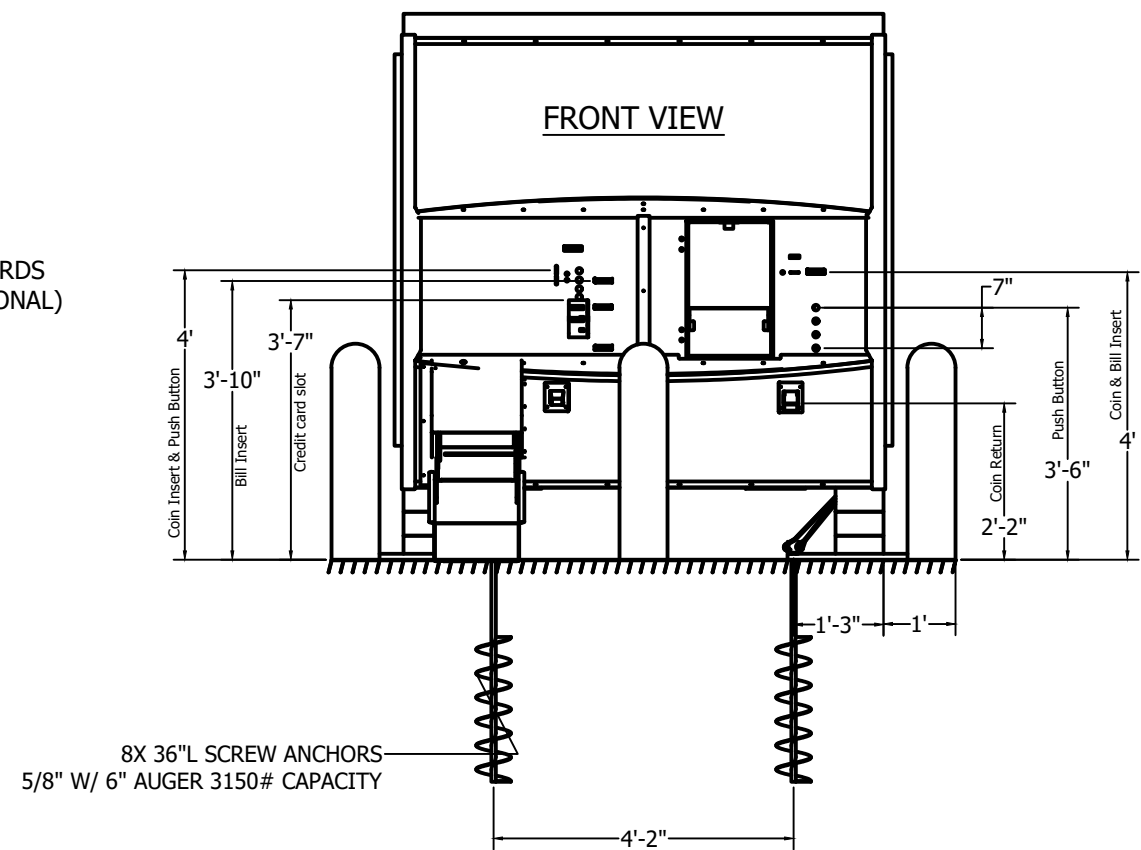
These documents are applicable only to the elements and loading criteria specifically provided herein. These documents shall not be construed in any way to specify, certify or design any aspects of the building not contained herein. Specified design criteria are based solely on information provided by the client and must be verified and approved by the local authority having jurisdiction. ICC NTA, LLC is not responsible for fabrication or erection. If it is suspected that these documents have been modified, substituted or altered in any way, contact ICC NTA, LLC at (574) 773-7975 to obtain a file copy.

REVISIONS:	SCALE: NTS	APPROVED BY:	Ice House America Jacksonville, FL 32224	TITLE: ANCHORING PLAN (CONC. ANCHORS & TIE DOWN STRAP)	JOB NO: ICE052521-55
	DATE: 12/10/2020	DRAWN BY: AI		MODEL: 12' IVK	DRAWING NO: C-1C



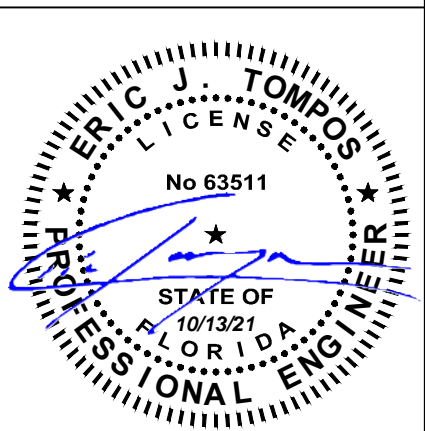
BOTTOM VIEW

**INSTALLATION ON DIRT/ASPHALT USING SCREW ANCHORS
(TOP HAT NOT SHOWN)**



NOTE:

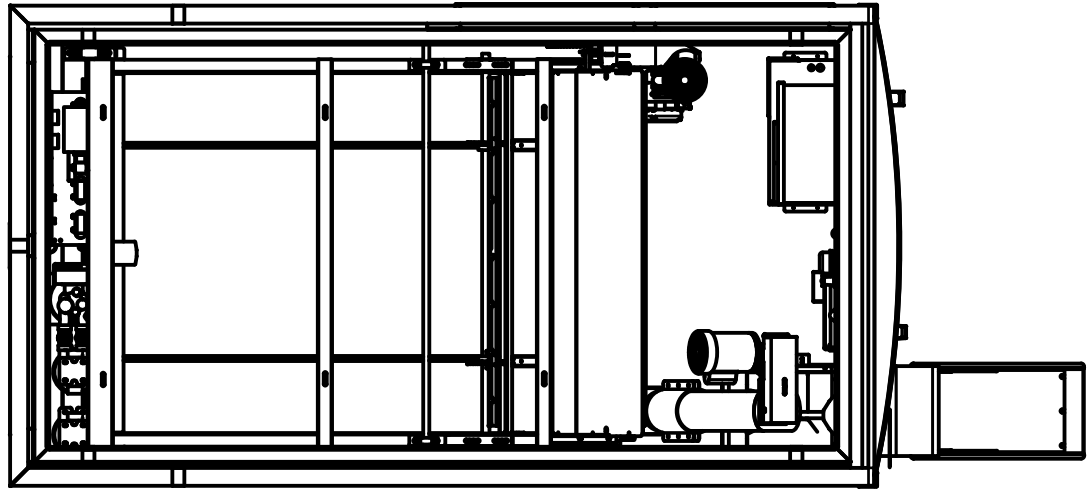
1. This is a optional site preparation drawing for dirt or asphalt ground and does not require the concrete foundation.
2. Keep 2" fall from front to rear in order to dispose water in drain line located at rear.
3. Electrical service with meter base and disconnect mounted on pole.
4. All water & electrical connection dimensions are from end of the base frame.
5. 10 Lb Bag chute shown.
6. 208/240 1 Phase or 208/240 3 Phase on Power pole 3' to 4' behind unit w/ meter base & Disconnect.



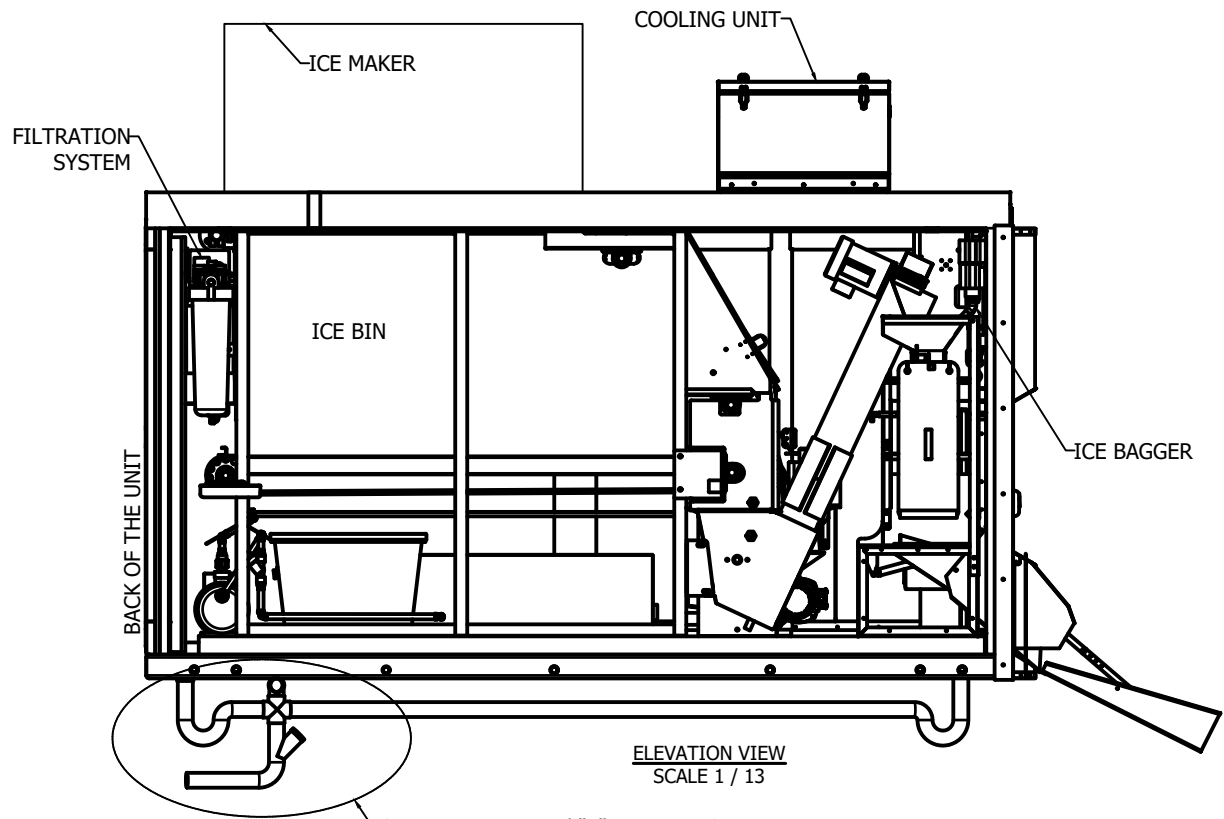
ICC NTA, LLC, 305 N Oakland Ave
Nappanee, Indiana 46550 Engineering COA # 33677

These documents are applicable only to the elements and loading criteria specifically provided herein. These documents shall not be construed in any way to specify, certify or design any aspects of the building not contained herein. Specified design criteria are based solely on information provided by the client and must be verified and approved by the local authority having jurisdiction. ICC NTA, LLC is not responsible for fabrication or erection. If it is suspected that these documents have been modified, substituted or altered in any way, contact ICC NTA, LLC at (574) 773-7975 to obtain a file copy.

REVISIONS:	SCALE: NTS	APPROVED BY:	Ice House America Jacksonville, FL 32224	TITLE: ANCHORING PLAN (BLACK PAD PIER PAD)	JOB NO: ICE052521-55
	DATE: 12/10/2020	DRAWN BY: AI		MODEL: 12' IVK	DRAWING NO: C-1D

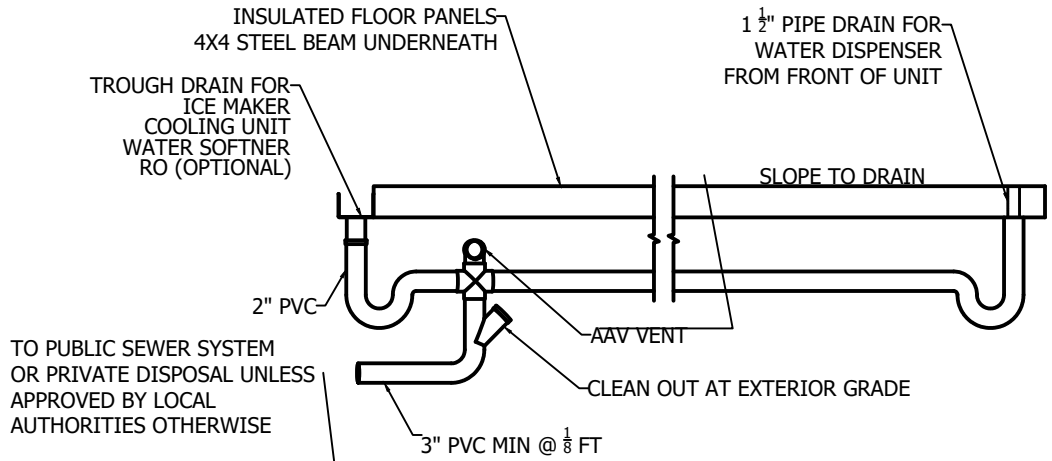


PLAN VIEW
SCALE 1 / 13

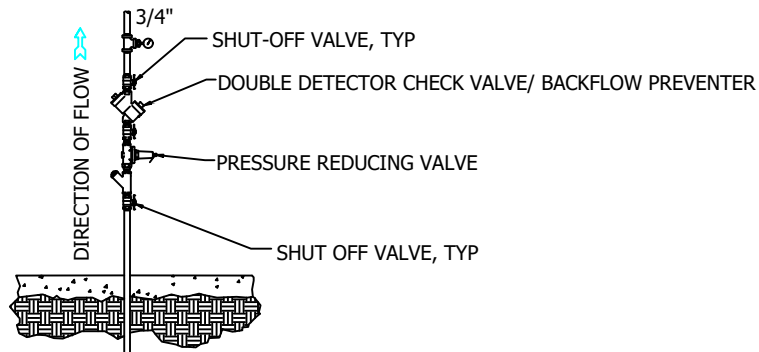


ELEVATION VIEW
SCALE 1 / 13

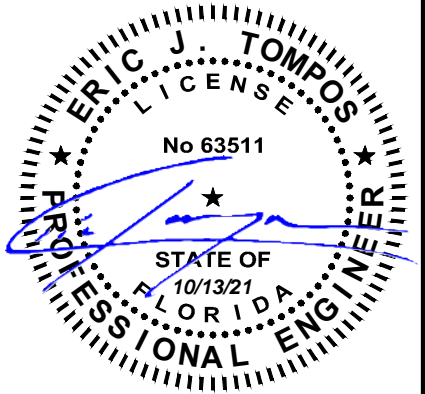
SEE WATER DRAIN/ "P" TRAP DIAGRAM



TYPICAL WATER DRAIN/ 'P' TRAP DIAGRAM
NO SCALE (REFER SITE SPECIFIC DWG/LOCAL CODE)

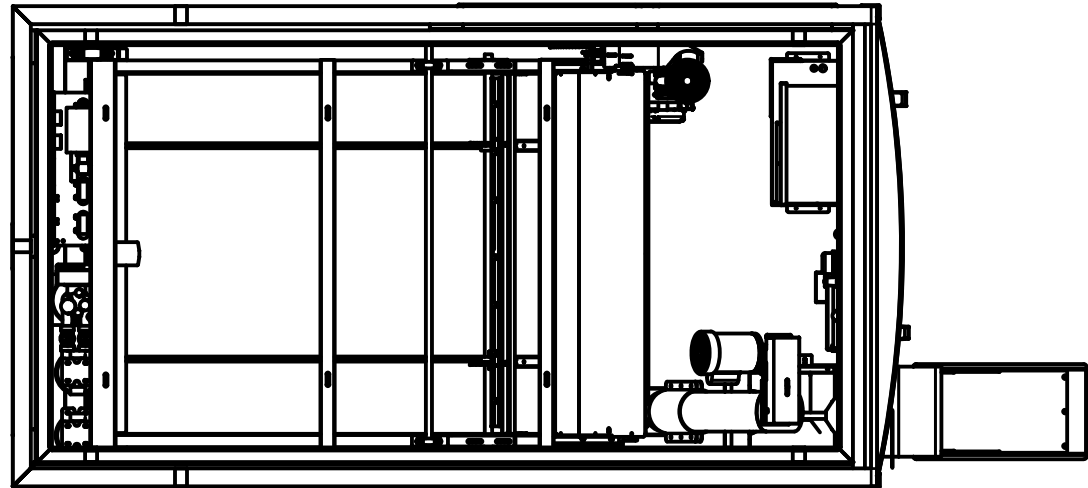


WATER SERVICE DETAIL
NO SCALE

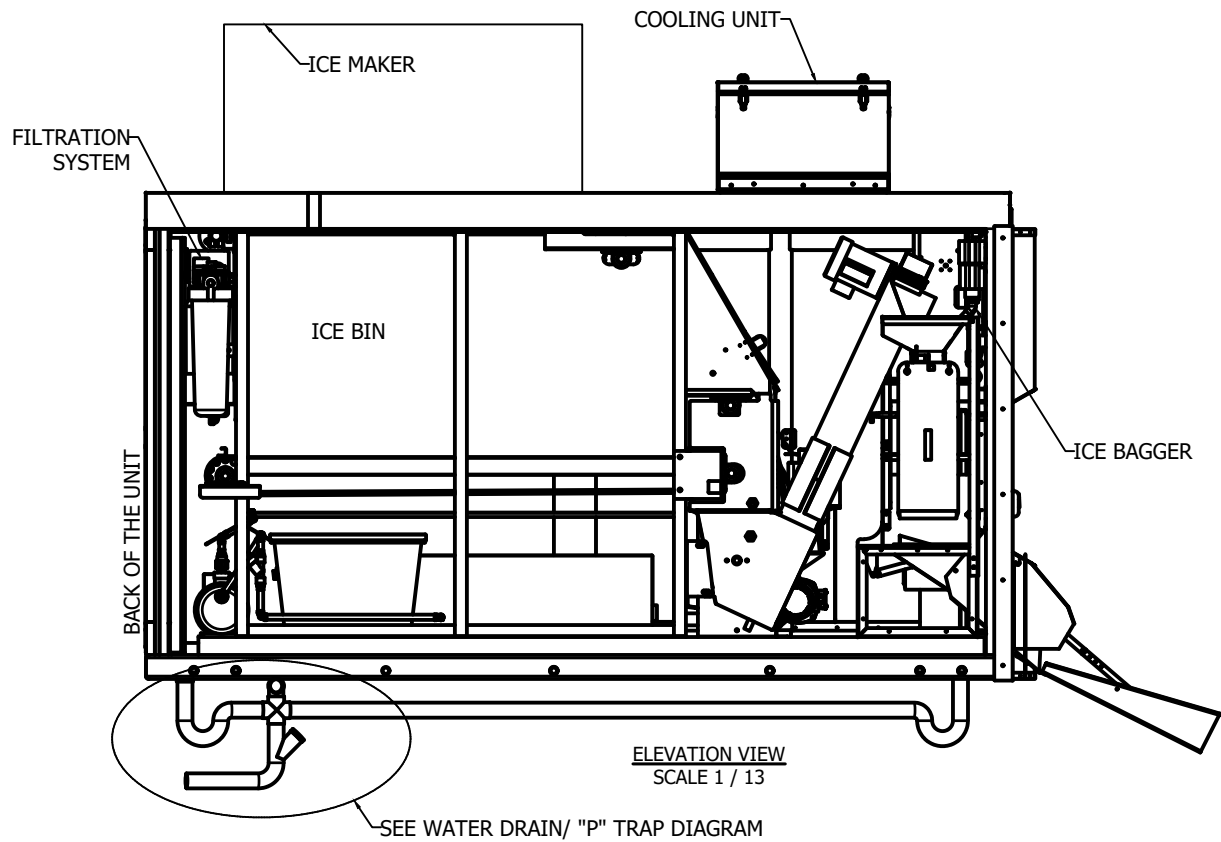


ICC NTA, LLC, 305 N Oakland Ave
Nappanee, Indiana 46550 Engineering COA # 33677
These documents are applicable only to the elements and loading criteria specifically provided herein. These documents shall not be construed in any way to specify, certify or design any aspects of the building not contained herein. Specified design criteria are based solely on information provided by the client and must be verified and approved by the local authority having jurisdiction. ICC NTA, LLC is not responsible for fabrication or erection. If it is suspected that these documents have been modified, substituted or altered in any way, contact ICC NTA, LLC at (574) 773-7975 to obtain a file copy.

REVISIONS:	SCALE: NTS	APPROVED BY:	Ice House America Jacksonville, FL 32224	TITLE: EQUIPMENT INFORMATION W/ SEWER DRAINAGE	JOB NO: ICE052521-55
	DATE: 12/10/2020	DRAWN BY: AI		MODEL: 12' IVK	DRAWING NO: EQ-1A

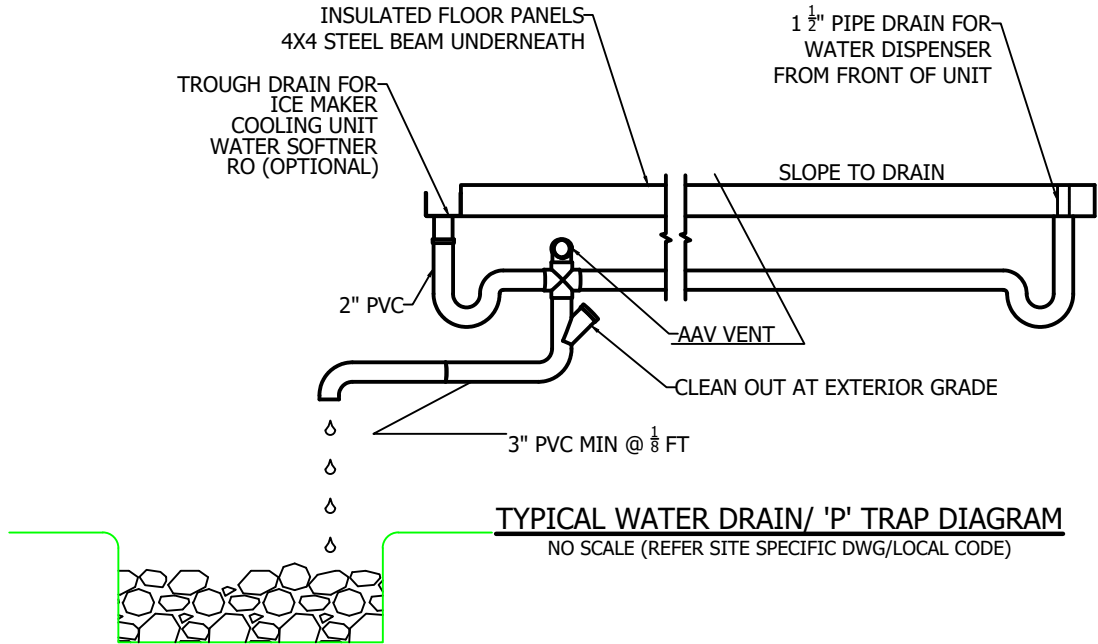


PLAN VIEW
SCALE 1 / 13

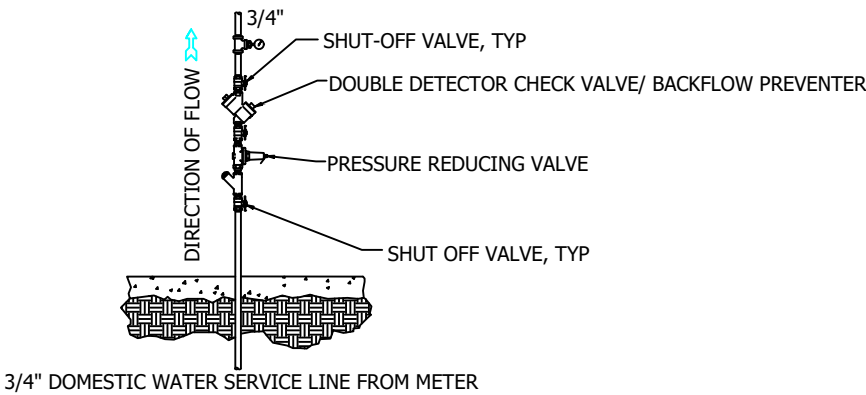


ELEVATION VIEW
SCALE 1 / 13

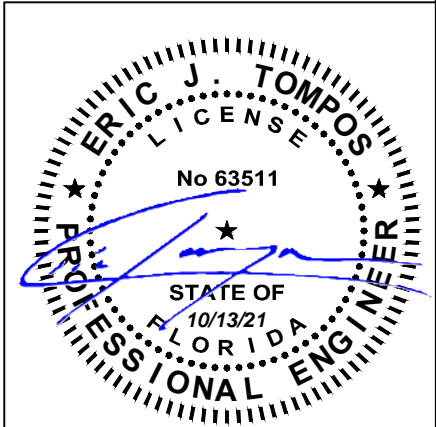
SEE WATER DRAIN/ "P" TRAP DIAGRAM



TYPICAL WATER DRAIN/ 'P' TRAP DIAGRAM
NO SCALE (REFER SITE SPECIFIC DWG/LOCAL CODE)

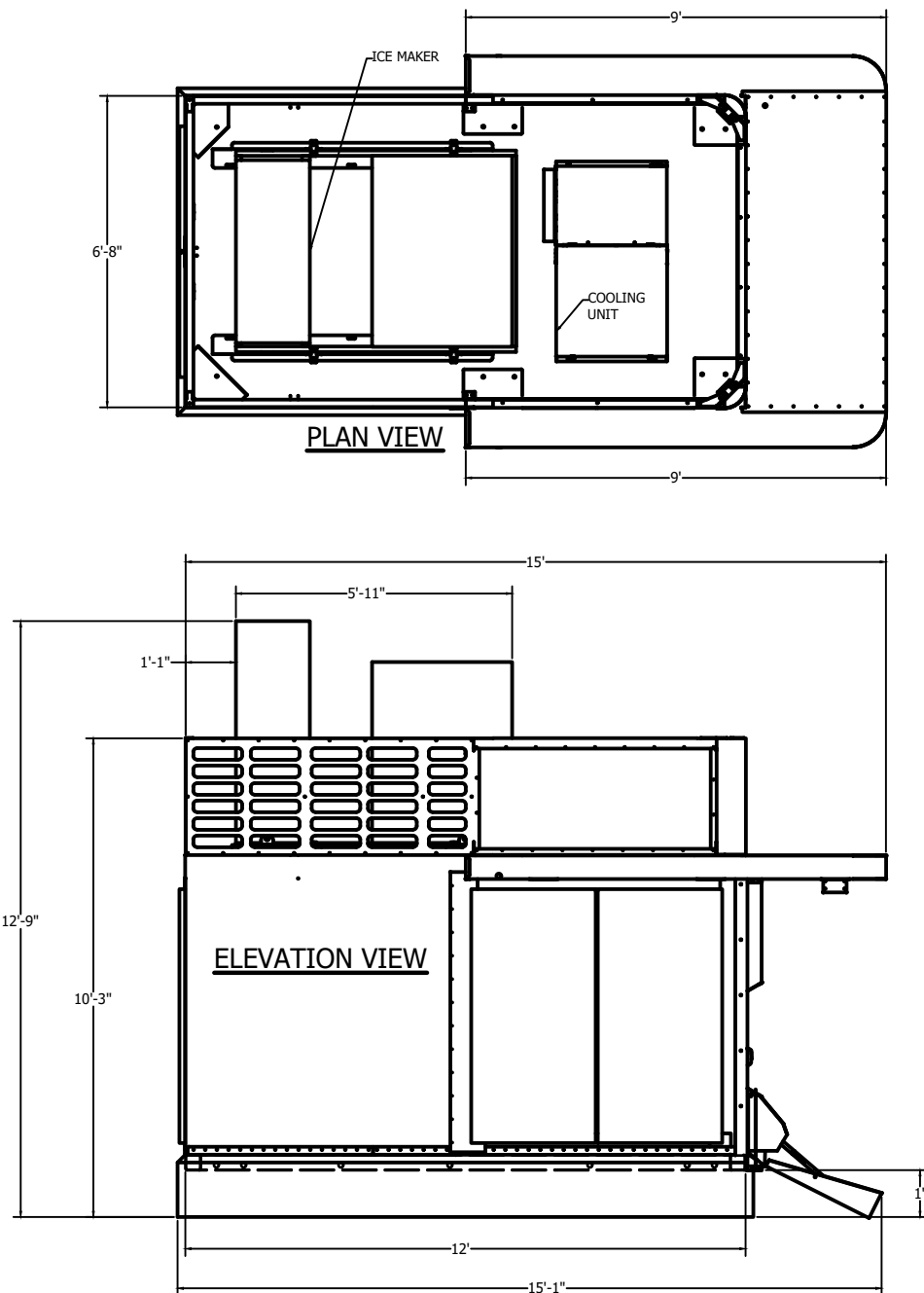


WATER SERVICE DETAIL
NO SCALE

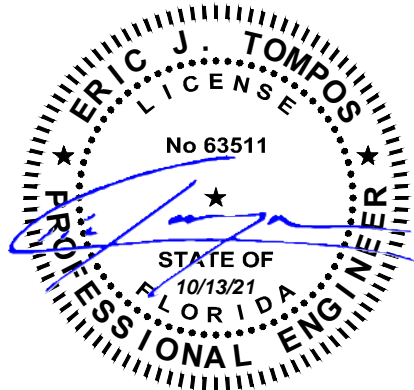


ICC NTA, LLC, 305 N Oakland Ave
Nappanee, Indiana 46550 Engineering COA # 33677
These documents are applicable only to the elements and loading criteria specifically provided herein. These documents shall not be construed in any way to specify, certify or design any aspects of the building not contained herein. Specified design criteria are based solely on information provided by the client and must be verified and approved by the local authority having jurisdiction. ICC NTA, LLC is not responsible for fabrication or erection. If it is suspected that these documents have been modified, substituted or altered in any way, contact ICC NTA, LLC at (574) 773-7975 to obtain a file copy.

REVISIONS:	SCALE: NTS	APPROVED BY:	Ice House America Jacksonville, FL 32224	TITLE: EQUIPMENT INFO W/ DRYWELL WATER DRAINAGE	JOB NO: ICE052521-55
	DATE: 12/10/2020	DRAWN BY: AI		MODEL: 12' IVK	DRAWING NO: EQ-1B

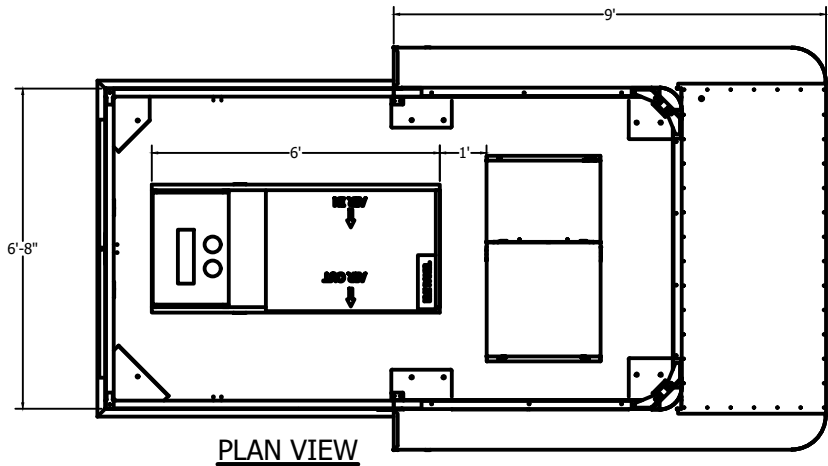


STANDARD (12') KIOSK INSTALLED
(WITH ARCTIC TEMP 5200 ICE MAKER)

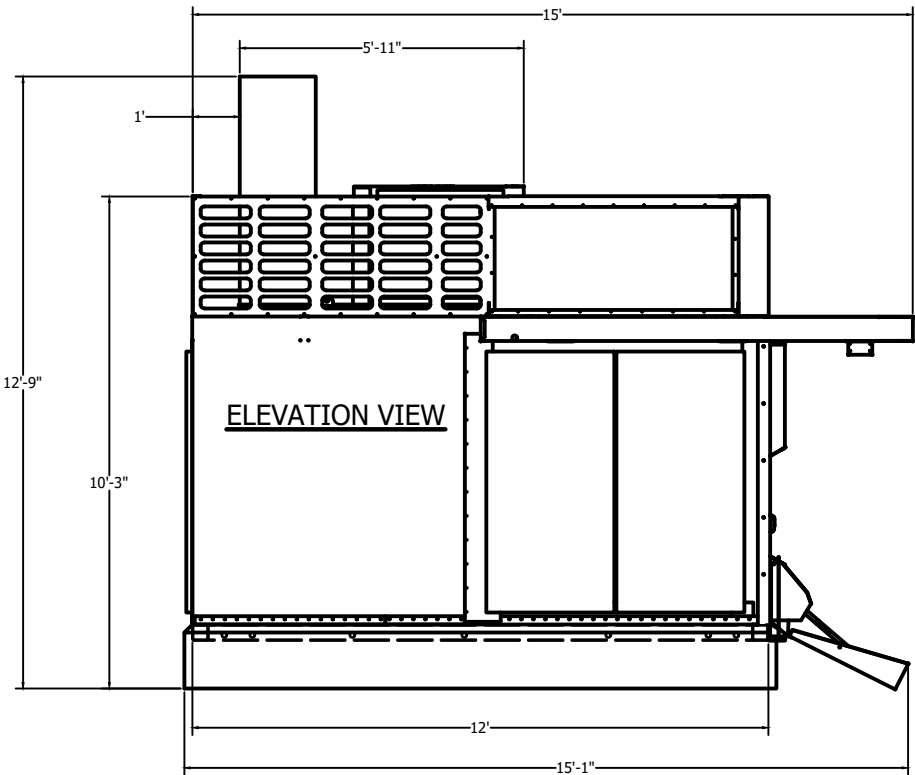


ICC NTA, LLC, 305 N Oakland Ave
Nappanee, Indiana 46550 Engineering COA # 33677
These documents are applicable only to the elements and loading criteria specifically provided herein. These documents shall not be construed in any way to specify, certify or design any aspects of the building not contained herein. Specified design criteria are based solely on information provided by the client and must be verified and approved by the local authority having jurisdiction. ICC NTA, LLC is not responsible for fabrication or erection. If it is suspected that these documents have been modified, substituted or altered in any way, contact ICC NTA, LLC at (574) 773-7975 to obtain a file copy.

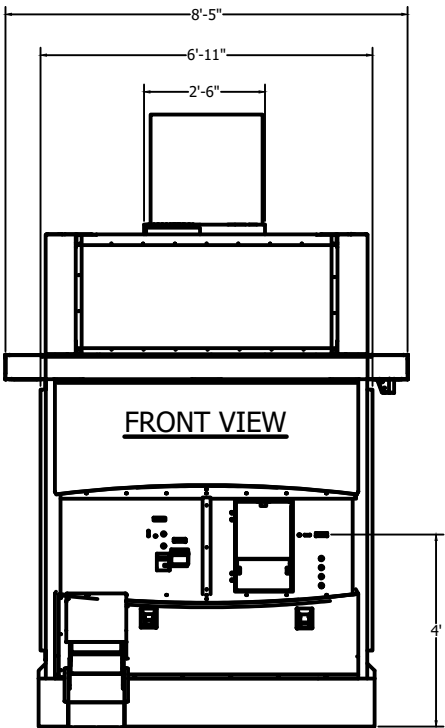
REVISIONS:	SCALE: NTS	APPROVED BY:	Ice House America Jacksonville, FL 32224	TITLE: OVERALL DIMENSIONS W/ ARCTIC TEMP 5200 ICE MAKER	JOB NO: ICE052521-55
	DATE: 12/10/2020	DRAWN BY: AI		MODEL: 12' IVK	DRAWING NO: S-1B



PLAN VIEW

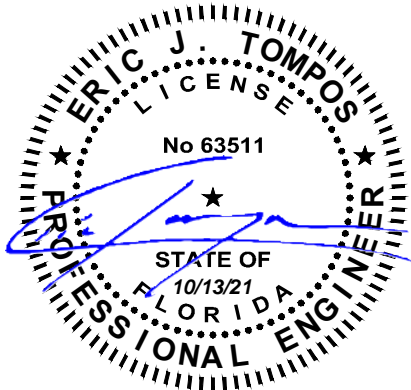


ELEVATION VIEW



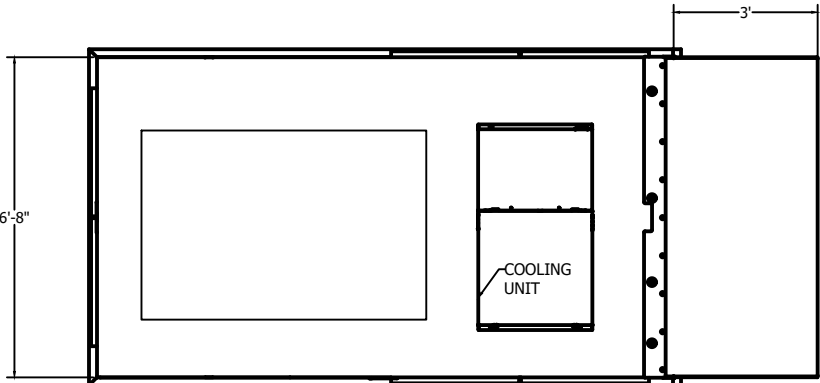
FRONT VIEW

STANDARD (12') KIOSK INSTALLED
(WITH SINGLE PHASE ARCTIC TEMP 2500 ICE MAKER)

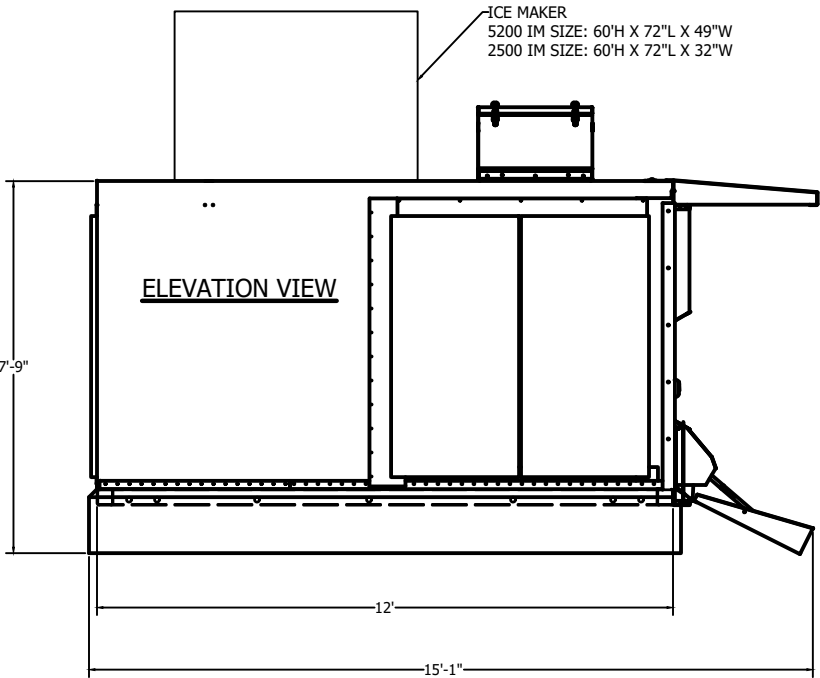


ICC NTA, LLC, 305 N Oakland Ave
Nappanee, Indiana 46550 Engineering COA # 33677
These documents are applicable only to the elements and loading criteria specifically provided herein. These documents shall not be construed in any way to specify, certify or design any aspects of the building not contained herein. Specified design criteria are based solely on information provided by the client and must be verified and approved by the local authority having jurisdiction. ICC NTA, LLC is not responsible for fabrication or erection. If it is suspected that these documents have been modified, substituted or altered in any way, contact ICC NTA, LLC at (574) 773-7975 to obtain a file copy.

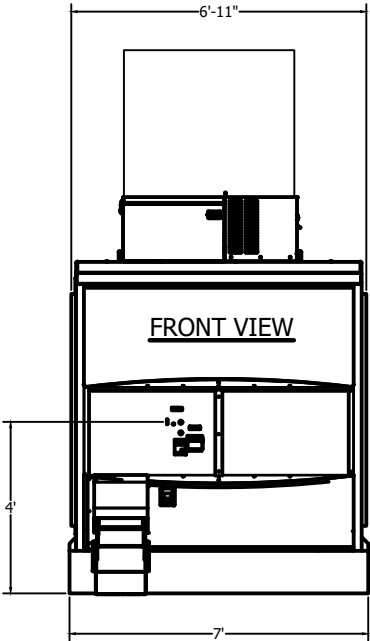
REVISIONS:	SCALE: NTS	APPROVED BY:	Ice House America Jacksonville, FL 32224	TITLE: OVERALL DIMENSIONS W/ ARCTIC TEMP 2500 IM	JOB NO: ICE052521-55
	DATE: 12/10/2020	DRAWN BY: AI		MODEL: 12' IVK	DRAWING NO: S-1C



PLAN VIEW

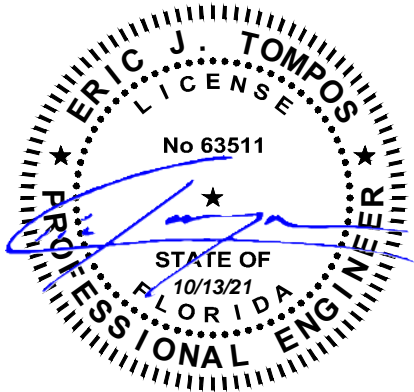


ELEVATION VIEW



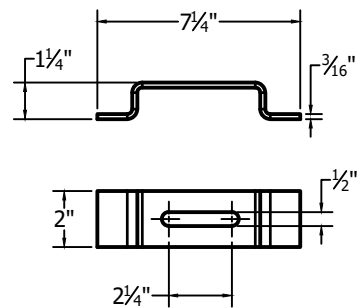
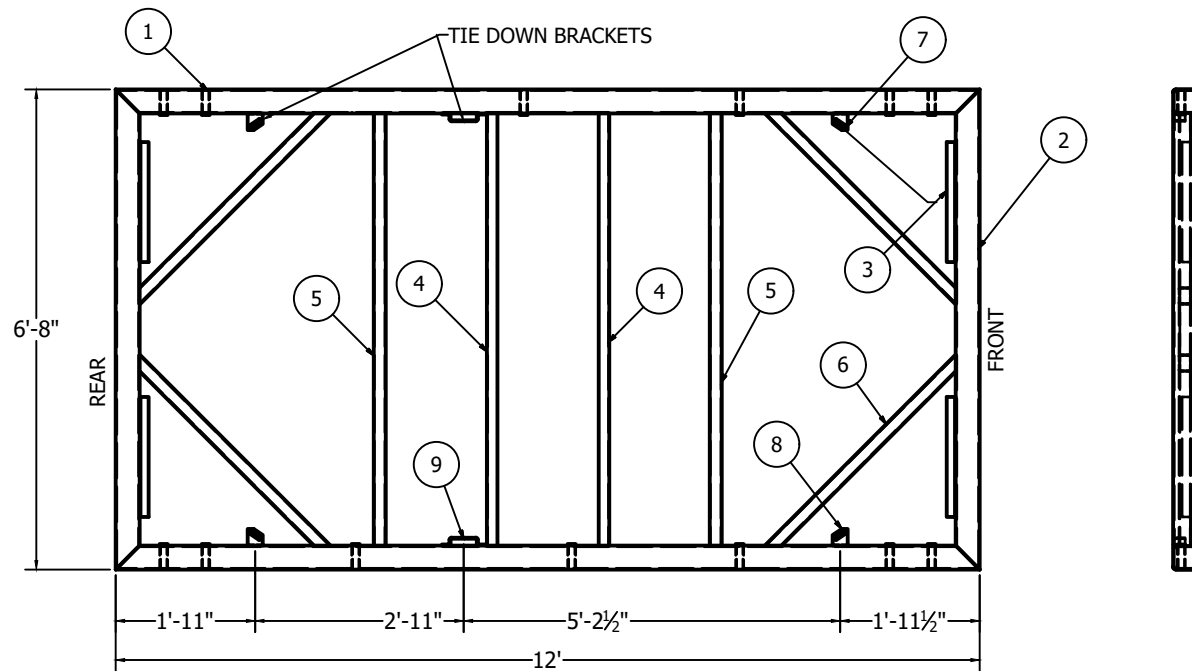
FRONT VIEW

STANDARD (12') BASE KIOSK INSTALLED

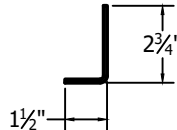
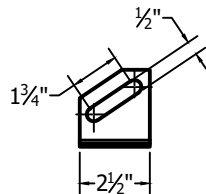


ICC NTA, LLC, 305 N Oakland Ave
Nappanee, Indiana 46550 Engineering COA # 33677
These documents are applicable only to the elements and loading criteria specifically provided herein. These documents shall not be construed in any way to specify, certify or design any aspects of the building not contained herein. Specified design criteria are based solely on information provided by the client and must be verified and approved by the local authority having jurisdiction. ICC NTA, LLC is not responsible for fabrication or erection. If it is suspected that these documents have been modified, substituted or altered in any way, contact ICC NTA, LLC at (574) 773-7975 to obtain a file copy.

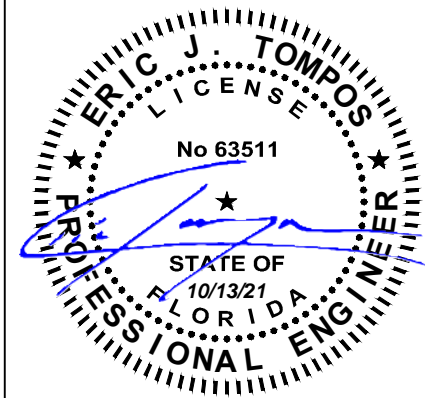
REVISIONS:	SCALE: NTS	APPROVED BY:	Ice House America Jacksonville, FL 32224	TITLE: OVERALL DIMENSIONS BASE KIOSK W/ AT ICE MAKER	JOB NO: ICE052521-55
	DATE: 12/10/2020	DRAWN BY: AI		MODEL: 12' IVK	DRAWING NO: S-1D



TIE DOWN BRACKETS



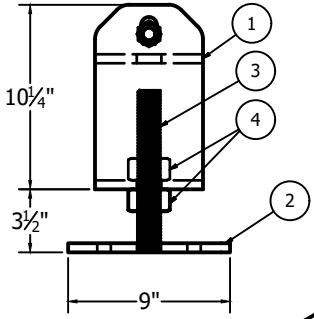
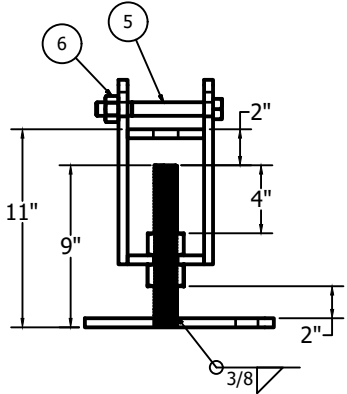
PARTS LIST				
ITEM	QTY	PART NUMBER	DESCRIPTION	MATERIAL PROPERTIES
1	2	H02661	Rect Tube,CS 4"x4"x 3/16" x144" L	ASTM A500 Gr. B, Fy=46ksi
2	2	H02509	Rect Tube,CS 4"x4"x 3/16" x80"L	ASTM A500 Gr. B, Fy=46ksi
3	4	H02510	Angle, 1.5" X 1.5"x 20" L	ASTM A-1011 CS Type B, Fy=50ksi
4	2	H02511	Channel, 1.75" X 2" X 1.75"	ASTM A-1011 CS Type B, Fy=50ksi
5	2	H02512	Sq Tube, CS 2"x2"x 11 Ga X 72" L	ASTM A513 Gr. 1008/1010/1015, Fy=50ksi
6	4	H02513	Sq Tube, CS 2"x2"x 11 Ga X 45" L	ASTM A513 Gr. 1008/1010/1015, Fy=50ksi
7	2	H02514	BRKT, Tie Down End	
8	2	H02514_MIR	BRKT, Tie Down End	
9	2	H00886	BRKT, Tie Down Mid 2.5"x9" L	
10	13	H00887	Pipe, CS 1" SCH40 - 4.5" L	



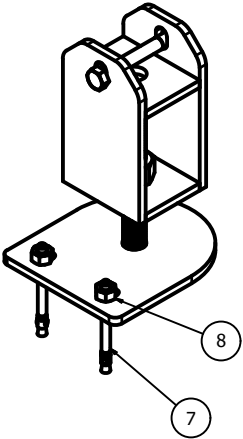
ICC NTA, LLC, 305 N Oakland Ave
Nappanee, Indiana 46550 Engineering COA # 33677
These documents are applicable only to the elements and loading criteria specifically provided herein. These documents shall not be construed in any way to specify, certify or design any aspects of the building not contained herein. Specified design criteria are based solely on information provided by the client and must be verified and approved by the local authority having jurisdiction. ICC NTA, LLC is not responsible for fabrication or erection. If it is suspected that these documents have been modified, substituted or altered in any way, contact ICC NTA, LLC at (574) 773-7975 to obtain a file copy.

REVISIONS:	SCALE: NTS	APPROVED BY:	Ice House America Jacksonville, FL 32224	TITLE: BASE FRAME W/ TIE DOWN BRACKETS	JOB NO: ICE052521-55
	DATE: 12/10/2020	DRAWN BY: AI		MODEL: 12' IVK	DRAWING NO: S-2A

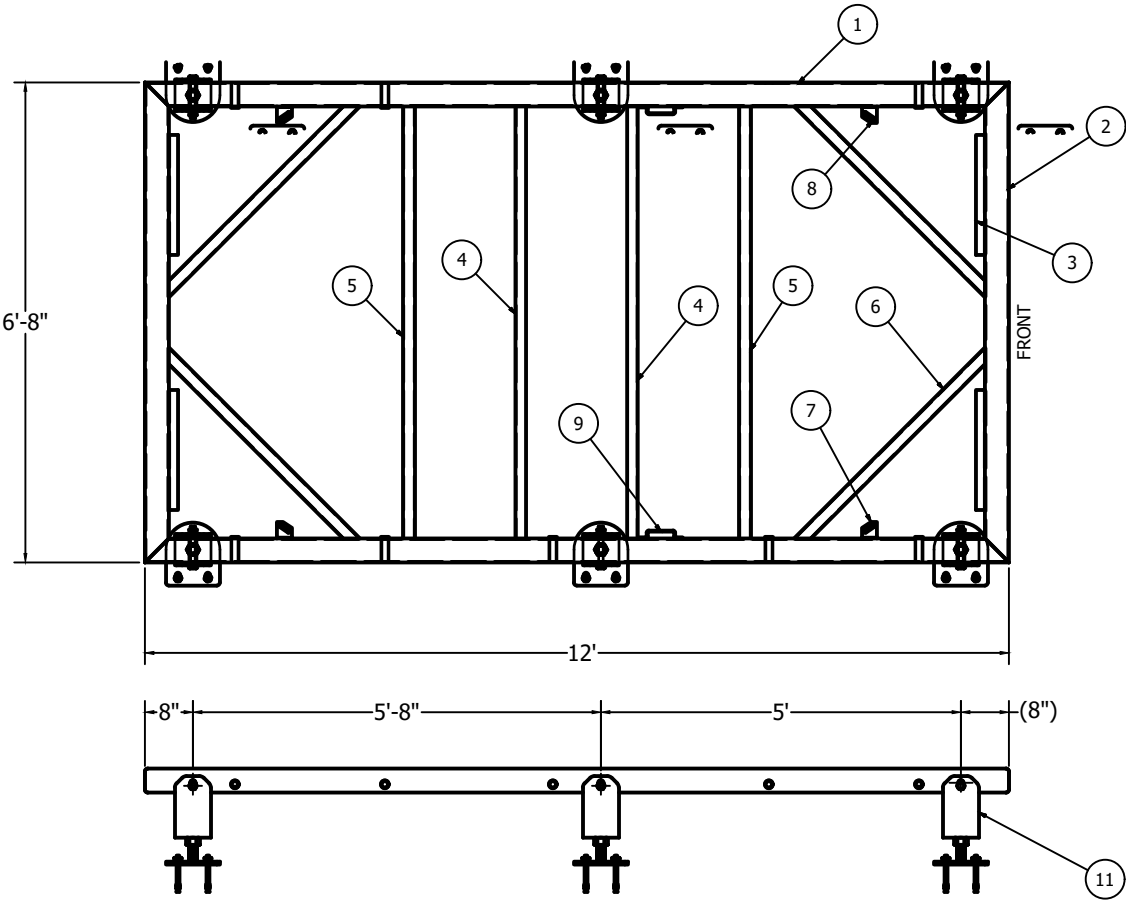
PARTS LIST				
ITEM	QTY	PART NUMBER	DESCRIPTION	MATERIAL PROPERTIES
1	2	H02661	Rect Tube,CS 4"x4"x 3/16" x144" L	ASTM A500 Gr. B, Fy=46ksi
2	2	H02509	Rect Tube,CS 4"x4"x 3/16" x80"L	ASTM A500 Gr. B, Fy=46ksi
3	4	H02510	Angle, 1.5" X 1.5"x 20" L	ASTM A-1011 CS Type B, Fy=50ksi
4	2	H02511	Channel, 1.75" X 2" X 1.75"	ASTM A-1011 CS Type B, Fy=50ksi
5	2	H02512	Sq Tube, CS 2"x2"x 11 Ga X 72" L	ASTM A513 Gr. 1008/1010/1015, Fy=50ksi
6	4	H02513	Sq Tube, CS 2"x2"x 11 Ga X 45" L	ASTM A513 Gr. 1008/1010/1015, Fy=50ksi
7	2	H02514	BRKT, Tie Down End	
8	2	H02514_MIR	BRKT, Tie Down End	
9	2	H00886	BRKT, Tie Down Mid 2.5"x9" L	
10	13	H00887	Pipe, CS 1" SCH40 - 4.5" L	
11	6	S00588	Asm, Mounting Leg, IVK	



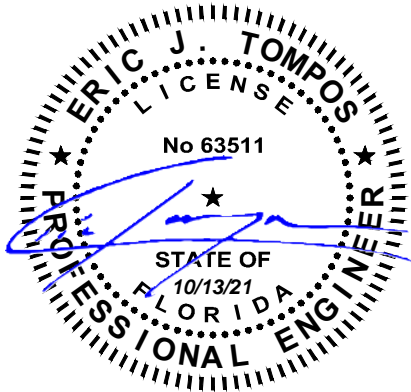
MOUNTING LEG



PARTS LIST			
ITEM	QTY	PART NUMBER	DESCRIPTION
1	1	S00589	WLDMT, Mounting Leg
2	1	H02913	Bottom Plate, Mtg Leg, 100KSI
3	1	H02911	Stud, 1-1/4"-5 Acme Thread, B7 Alloy
4	2	H02912	NUT, 1-1/4"-5 Acme Thread, Low CS
5	1	H02927	HHCS, 3/4"-10 x 6-1/2"L Zinc Finish
6	1	H02928	Hex Nut, 3/4"-10, Grade A Zinc
7	2	H02929	Stud, 5/8"X 6" L Concrete Anchor
8	2	H02930	Hex Nut, 5/8"-11, Grade A Zinc

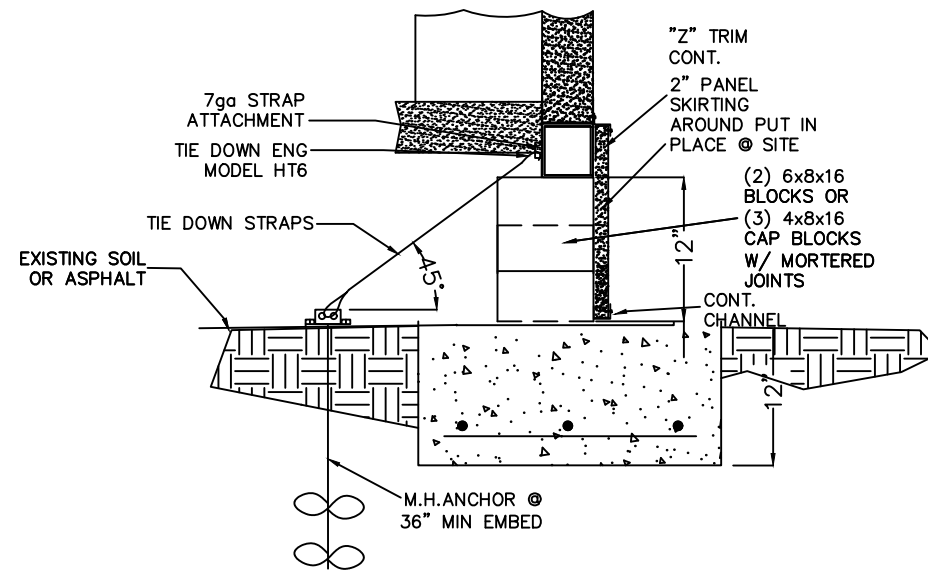


BASE FRAME
(WITH MOUNTING LEGS)



ICC NTA, LLC, 305 N Oakland Ave
Nappanee, Indiana 46550 Engineering COA # 33677
These documents are applicable only to the elements and loading criteria specifically provided herein. These documents shall not be construed in any way to specify, certify or design any aspects of the building not contained herein. Specified design criteria are based solely on information provided by the client and must be verified and approved by the local authority having jurisdiction. ICC NTA, LLC is not responsible for fabrication or erection. If it is suspected that these documents have been modified, substituted or altered in any way, contact ICC NTA, LLC at (574) 773-7975 to obtain a file copy.

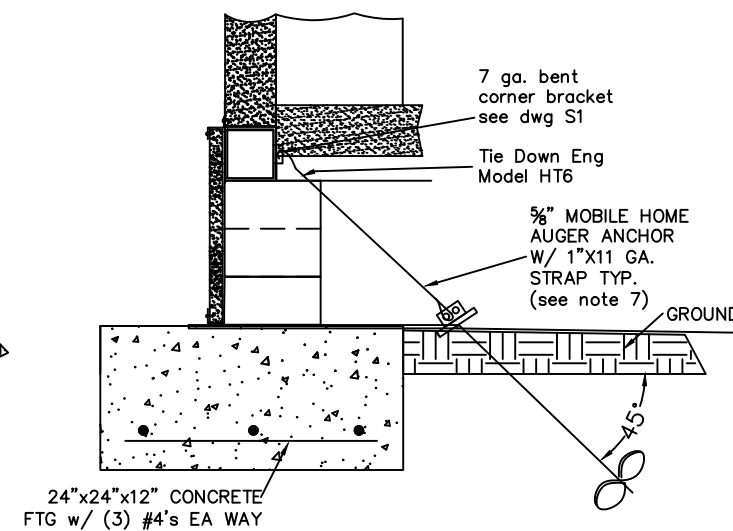
REVISIONS:	SCALE: NTS	APPROVED BY:	Ice House America Jacksonville, FL 32224	TITLE: BASE FRAME W/ MOUNTING LEG ANCHOR	JOB NO: ICE052521-55
	DATE: 12/10/2020	DRAWN BY: AI		MODEL: 12' IVK	DRAWING NO: S-2B



FDN IVK @ V1, 2, 3 & 4

FOOTING DEPTH

FOOTINGS SHOWN ABOVE FOR 12" DEEP FROST PENETRATION. LOCAL CONDITIONS MAY REQUIRE A DEEPER FOOTING. CONSULT PERMIT DEPT.



FOUNDATION TYPE 'IVK'

DIAGONAL "INLINE" ANCHOR (INTO SOIL - SEE DWG D4)

1. HOT DIP GALVANIZED PER ASTM A153-(LATEST REV.)
2. LEAD AND EXTENSION SECTION AND PILOT POINT LENGTHS ARE NOMINAL, EXPECT SOM VARIANCE.
3. SHAFT MATERIAL PER ASTM A29 (LATEST REVISION) OR MECHANICAL EQUIVALENT.
4. HELIX MATERIAL LOW CARBON STEEL MEETING THE GENERAL REQUIREMENTS OF AISI, OR ASTM A572 OR A935, OR ASTM A656 OR A936.
5. COUPLING BOLTS: PER ASTM A320 GRADE L7.
6. ALL WELDING TO BE DONE BY WELDERS CERTIFIED UNDER SECTION 5 OF THE AWS CODE D1.1.
7. SCREW ANCHORS TO HAVE 36" MINIMUM GROUND EMBEDMENT.

ERIC J. TOMPOS
LICENSE
No 63511
STATE OF FLORIDA
10/13/21
PROFESSIONAL ENGINEER

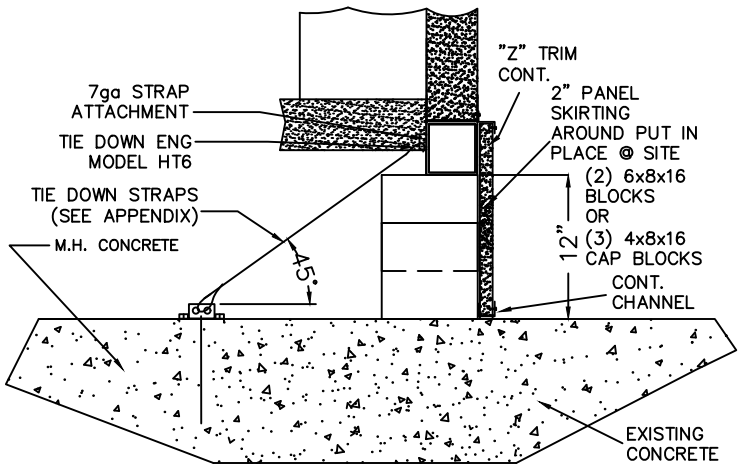
ICC NTA, LLC, 305 N Oakland Ave
Nappanee, Indiana 46550 Engineering COA # 33677

These documents are applicable only to the elements and loading criteria specifically provided herein. These documents shall not be construed in any way to specify, certify or design any aspects of the building not contained herein. Specified design criteria are based solely on information provided by the client and must be verified and approved by the local authority having jurisdiction. ICC NTA, LLC is not responsible for fabrication or erection. If it is suspected that these documents have been modified, substituted or altered in any way, contact ICC NTA, LLC at (574) 773-7975 to obtain a file copy.

REVISIONS:	SCALE: NTS	APPROVED BY:	Ice House America Jacksonville, FL 32224	TITLE: FRAME PLAN DETAILS	JOB NO: ICE052521-55
	DATE: 12/10/2020	DRAWN BY: AI		MODEL: 12' IVK	DRAWING NO: D-1

CONCRETE/REINFORCING STEEL/MASONRY NOTES:

- 1) CONCRETE FOR FOUNDATIONS TO BE 3000 PSI MIN COMPRESSIVE STRENGTH @ 28 DAYS.
- 2) REINFORCING STEEL TO BE ASTM 60 GRADE.
- 3) MASONRY TO BE STANDARD WEIGHT 8x8x16 DOUBLE WYE BLOCKS WITH 4x8x16 SOLID CAP BLOCKS. PIERS TO BE HOLLOW BLOCKS MORTARED TOGETHER & SET IN A BED OF MORTAR.
- 4) MORTAR TO BE TYPE S WITH 18% MAX AIR CONTENT MIXED WITH SAND (4:1 MAX).

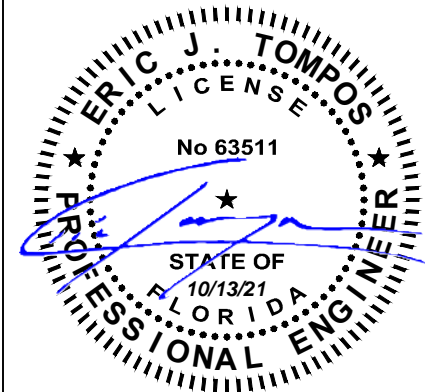


SECTION
ALT FDN @ V1, 2, 3 & 4

NOTE: SEE DWG D6 FOR PIER AND TIE
DOWN LAYOUT AND DIMENSIONS

NOTE: ONE PANEL SECTION 16"x24"
MIN SHOULD BE A REMOVABLE
CRAWLSPACE ACCESS DOOR.

SEE SITE INSTALLED ITEMS &
FOUNDATION NOTES ON C-0



ICC NTA, LLC, 305 N Oakland Ave
Nappanee, Indiana 46550 Engineering COA # 33677
These documents are applicable only to the elements and loading criteria specifically provided herein. These documents shall not be construed in any way to specify, certify or design any aspects of the building not contained herein. Specified design criteria are based solely on information provided by the client and must be verified and approved by the local authority having jurisdiction. ICC NTA, LLC is not responsible for fabrication or erection. If it is suspected that these documents have been modified, substituted or altered in any way, contact ICC NTA, LLC at (574) 773-7975 to obtain a file copy.

REVISIONS:	SCALE: NTS	APPROVED BY:	Ice House America Jacksonville, FL 32224	TITLE: FRAME PLAN DETAILS	JOB NO: ICE052521-55
	DATE: 12/10/2020	DRAWN BY: AI		MODEL: 12' IVK	DRAWING NO: D-2

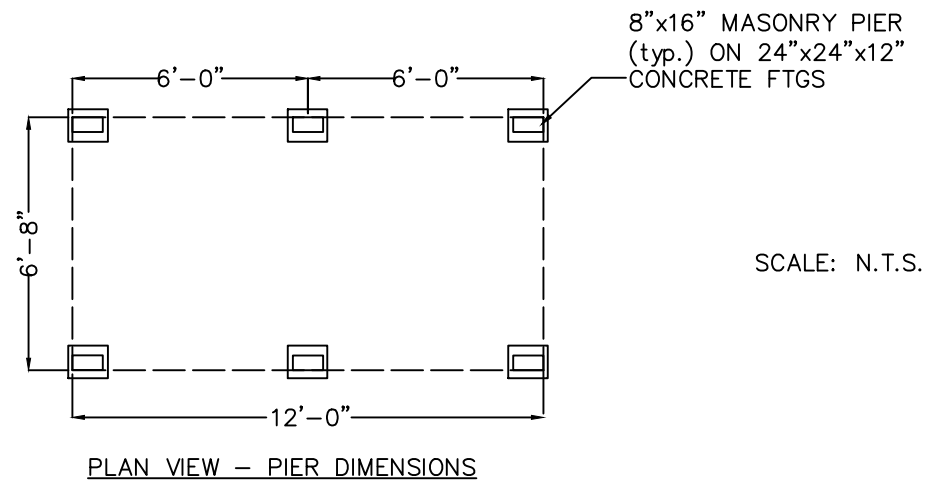
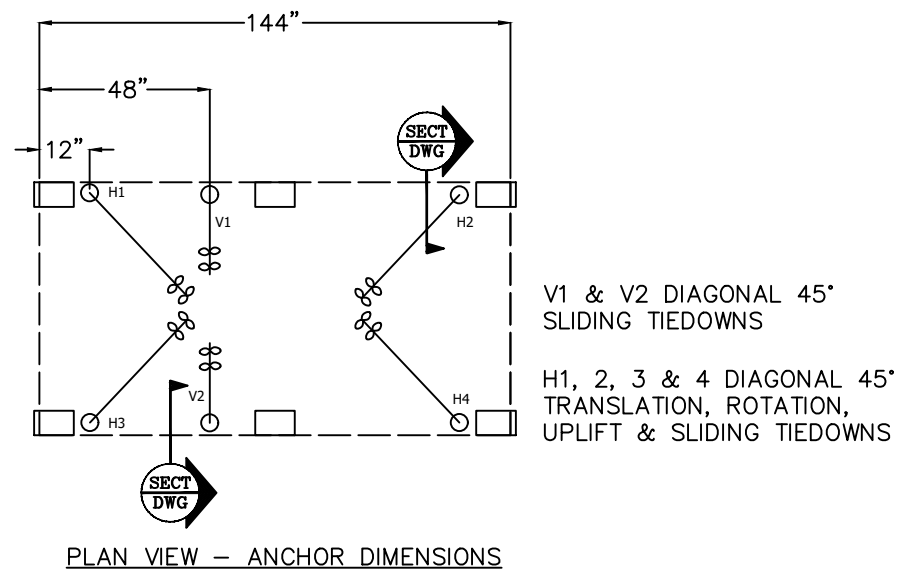
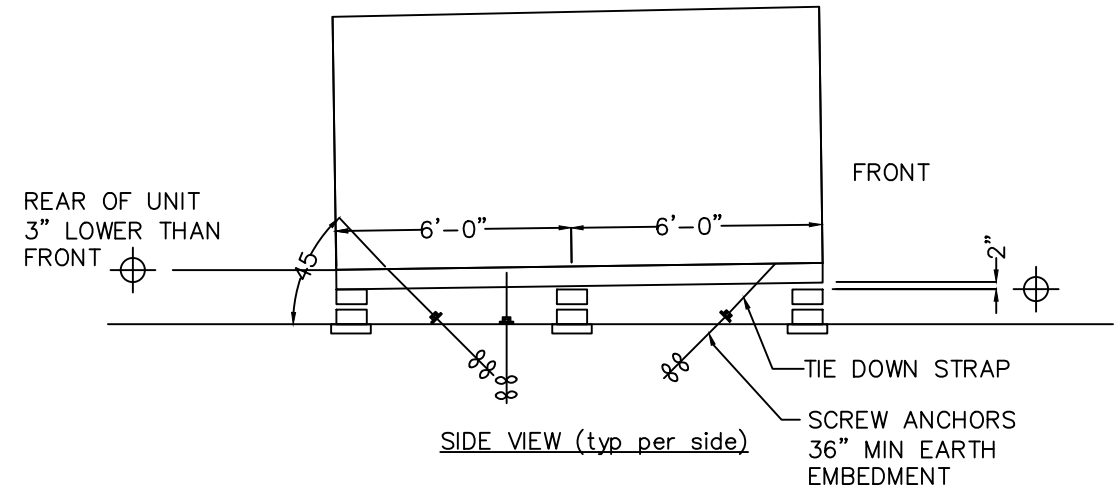
SEE SITE INSTALLED ITEMS &
FOUNDATION NOTES ON C-0



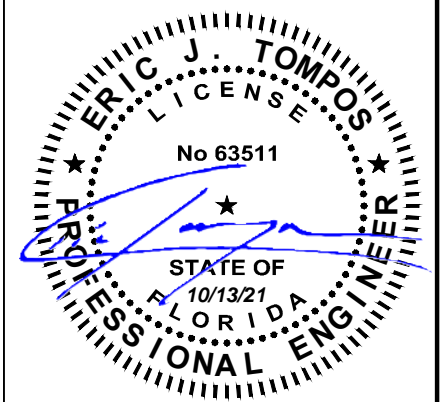
NEW CONCRETE FOUNDATION
SECTION
DIAGONAL INLINE ANCHOR
(INTO CONCRETE – SEE DWG D5)



REVISIONS:	SCALE: NTS	APPROVED BY:	Ice House America Jacksonville, FL 32224	TITLE: FRAME PLAN DETAILS	JOB NO: ICE052521-55
	DATE: 12/10/2020	DRAWN BY: AI		MODEL: 12' IVK	DRAWING NO: D-3

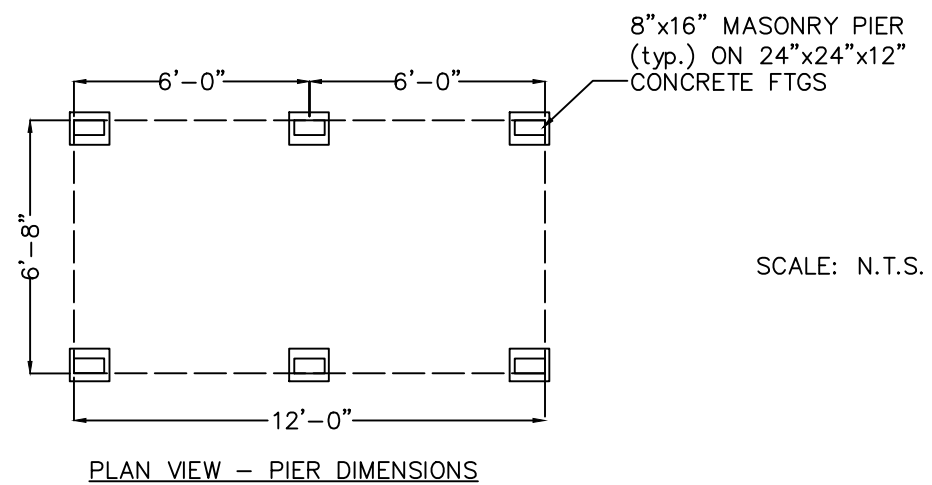
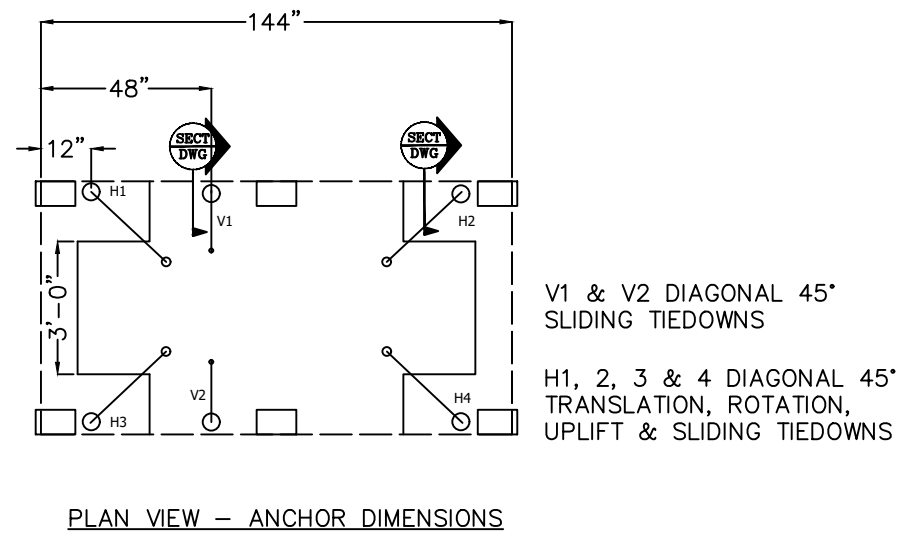
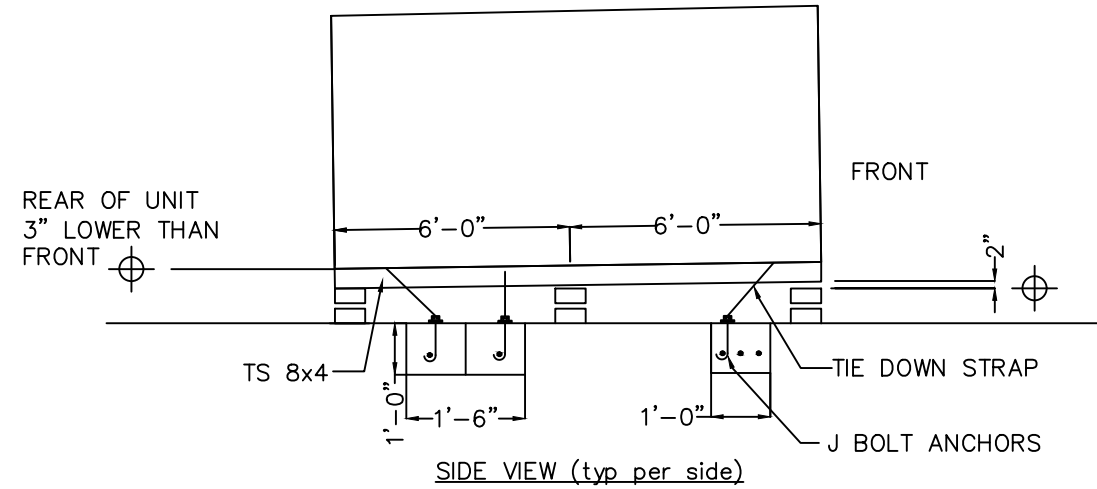


NOTE: SEE DWG D1
DETAILS & NOTES



ICC NTA, LLC, 305 N Oakland Ave
Nappanee, Indiana 46550 Engineering COA # 33677
These documents are applicable only to the elements and loading criteria specifically provided herein. These documents shall not be construed in any way to specify, certify or design any aspects of the building not contained herein. Specified design criteria are based solely on information provided by the client and must be verified and approved by the local authority having jurisdiction. ICC NTA, LLC is not responsible for fabrication or erection. If it is suspected that these documents have been modified, substituted or altered in any way, contact ICC NTA, LLC at (574) 773-7975 to obtain a file copy.

REVISIONS:	SCALE: NTS	APPROVED BY:	Ice House America Jacksonville, FL 32224	TITLE: FRAME PLAN DETAILS	JOB NO: ICE052521-55
	DATE: 12/10/2020	DRAWN BY: AI		MODEL: 12' IVK	DRAWING NO: D-4



NOTE: SEE DWG D3
DETAILS & NOTES

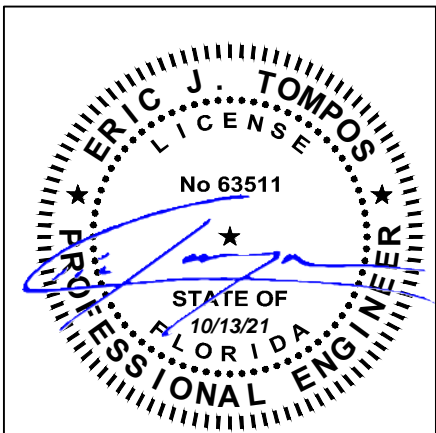
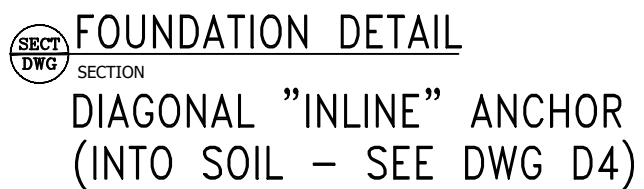
ERIC J. TOMPOS
LICENSE
No 63511
STATE OF
FLORIDA
10/13/21
PROFESSIONAL ENGINEER

ICC NTA, LLC, 305 N Oakland Ave
Nappanee, Indiana 46550 Engineering COA # 33677

These documents are applicable only to the elements and loading criteria specifically provided herein. These documents shall not be construed in any way to specify, certify or design any aspects of the building not contained herein. Specified design criteria are based solely on information provided by the client and must be verified and approved by the local authority having jurisdiction. ICC NTA, LLC is not responsible for fabrication or erection. If it is suspected that these documents have been modified, substituted or altered in any way, contact ICC NTA, LLC at (574) 773-7975 to obtain a file copy.

REVISIONS:	SCALE: NTS	APPROVED BY:	Ice House America Jacksonville, FL 32224	TITLE: FRAME PLAN DETAILS	JOB NO: ICE052521-55
	DATE: 12/10/2020	DRAWN BY: AI		MODEL: 12' IVK	DRAWING NO: D-5

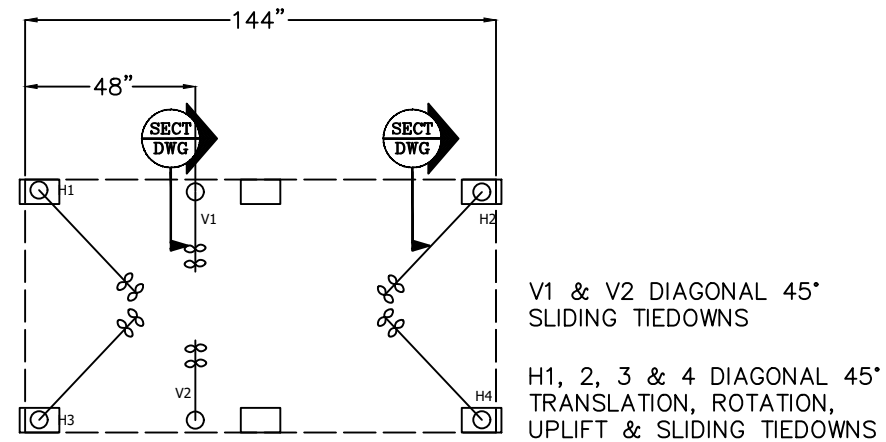
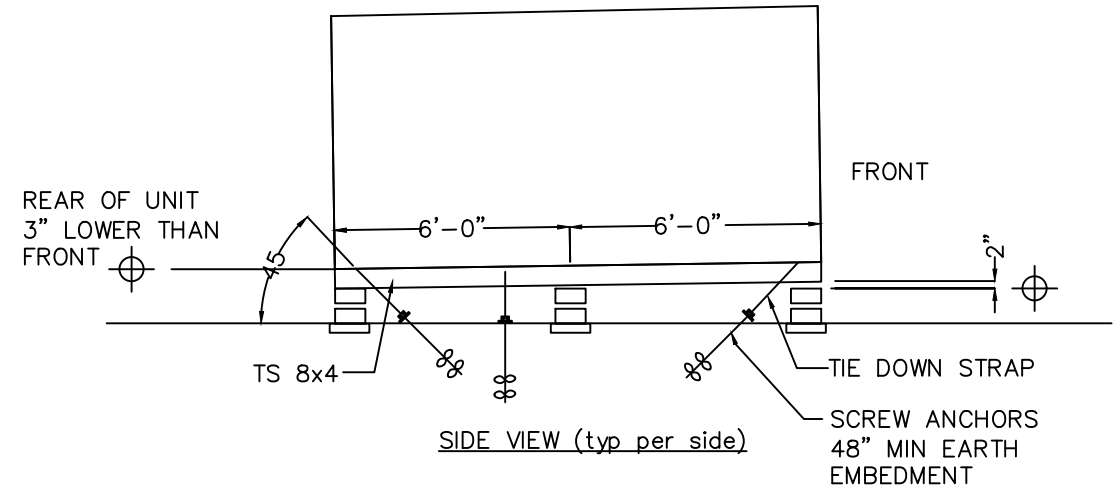
1. USE MOBILE ANCHORS $\frac{5}{8}$ " Ø MIN w/ 6" AUGER EARTH ELEMENT WITH 3200# MIN WORKING LOAD AND 36" MIN EARTH EMBEDMENT. (10 REQ'D.) ATTACH STRAP TO "TIE-DOWN" ON FRAME. ATTACH TO M.H. ANCHOR AND RATCHET DOWN.
2. HOT DIP GALVANIZED PER ASTM A153-(LATEST REV)
3. LEAD AND EXTENSION SECTION AND PILOT POINT LENGTHS ARE NOMINAL, EXPECT SOME VARIANCE.
4. SHAFT MATERIAL PER ASTM A29 (LATEST REVISION) OR MECHANICAL EQUIVALENT.
5. HELIX MATERIAL LOW CARBON STEEL MEETING THE GENERAL REQUIREMENTS OF AISI, OR ASTM A572 OR A935, OR ASTM A656 OR A936.
6. COUPLING BOLTS: PER ASTM A320 GRADE L7.
7. ALL WELDING TO BE DONE BY WELDERS CERTIFIED UNDER SECTION 5 OF THE AWS CODE D1.1.
8. SCREW ANCHORS TO HAVE 36" MINIMUM GROUND EMBEDMENT.



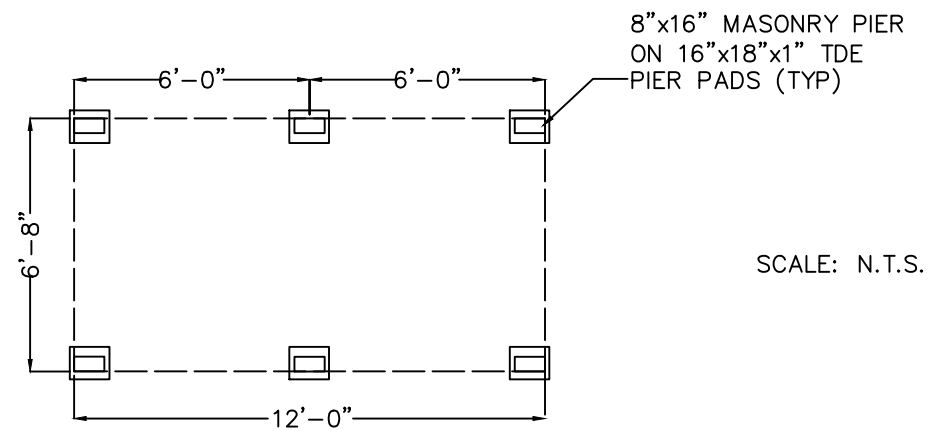
**ICC NTA, LLC, 305 N Oakland Ave
Nappanee, Indiana 46550 Engineering COA # 33677**

These documents are applicable only to the elements and loading criteria specifically referenced herein. No other design criteria are intended to be derived in any way to specify, certify or design any aspects of the building not contained herein. Specified design criteria are based solely on information provided by the client and must be verified and approved by the local authority having jurisdiction. ICC NTA, LLC is not responsible for fabrication or erection. If it is suspected that these documents have been modified, substituted or altered in any way, contact ICC NTA, LLC at (574) 773-7975 to obtain a file copy.

REVISIONS:	SCALE: NTS	APPROVED BY:	<div>Ice House America</div> <div>Jacksonville, FL 32224</div>	TITLE: FOUNDATION DETAILS	JOB NO: ICE052521-55
	DATE: 12/10/2020	DRAWN BY: AI		MODEL: 12' IVK	DRAWING NO: D-1A

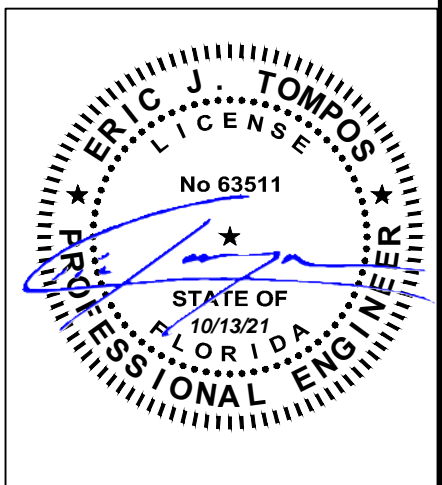


PLAN VIEW – ANCHOR DIMENSIONS



PLAN VIEW – PIER DIMENSIONS

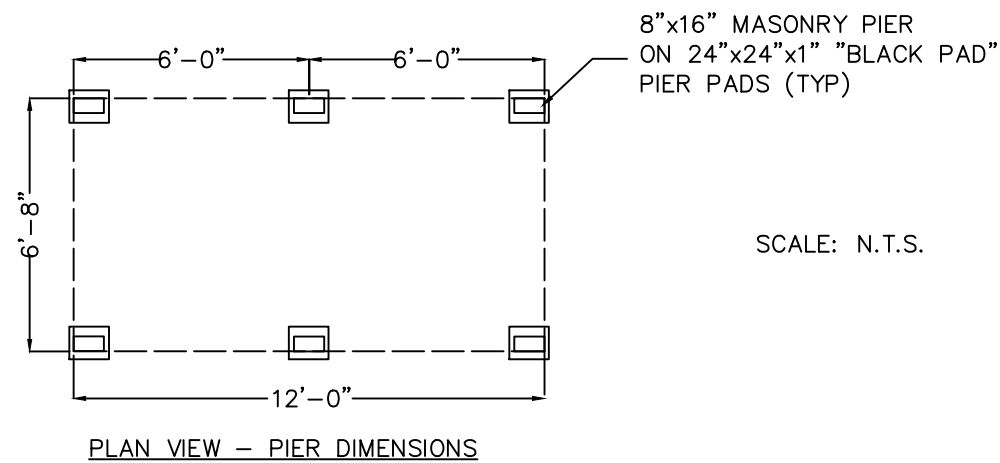
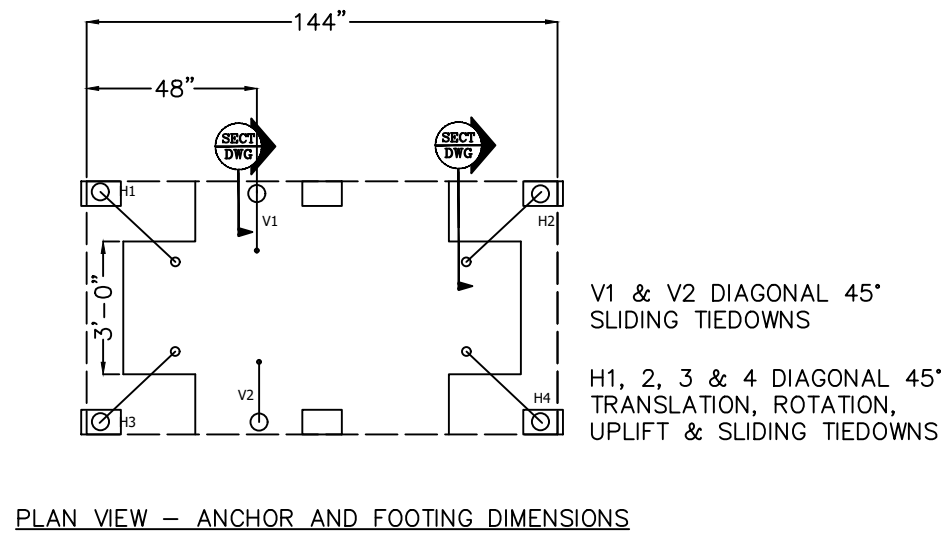
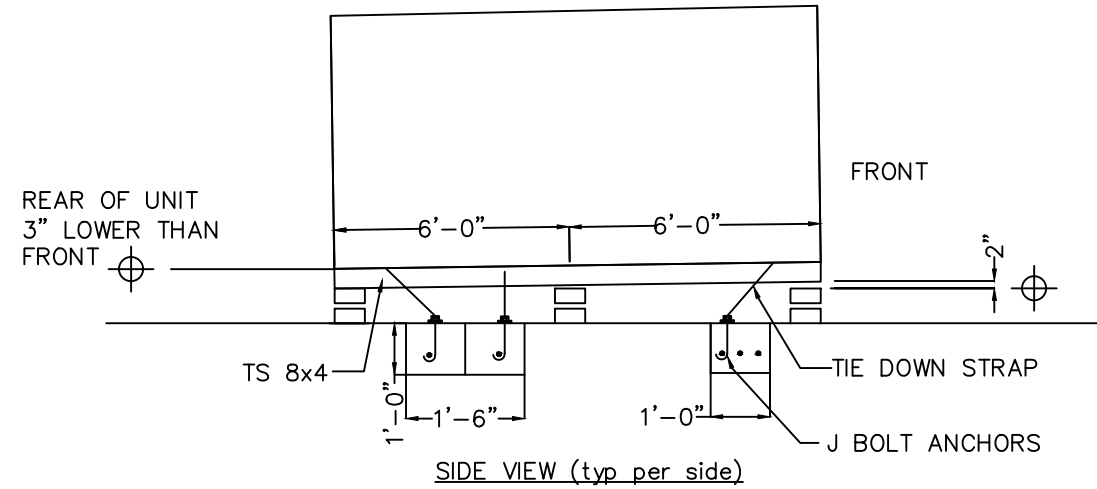
NOTE: SEE DWG D1A
DETAILS & NOTES



ICC NTA, LLC, 305 N Oakland Ave
Nappanee, Indiana 46550 Engineering COA # 33677

These documents are applicable only to the elements and loading criteria specifically provided herein. These documents shall not be construed in any way to specify, certify or design any aspects of the building not contained herein. Specified design criteria are based solely on information provided by the client and must be verified and approved by the local authority having jurisdiction. ICC NTA, LLC is not responsible for fabrication or erection. If it is suspected that these documents have been modified, substituted or altered in any way, contact ICC NTA, LLC at (574) 773-7975 to obtain a file copy.

REVISIONS:	SCALE: NTS	APPROVED BY:	Ice House America Jacksonville, FL 32224	TITLE: ANCHOR SYSTEM LAYOUT	JOB NO: ICE052521-55
	DATE: 12/10/2020	DRAWN BY: AI		MODEL: 12' IVK	DRAWING NO: D-4A



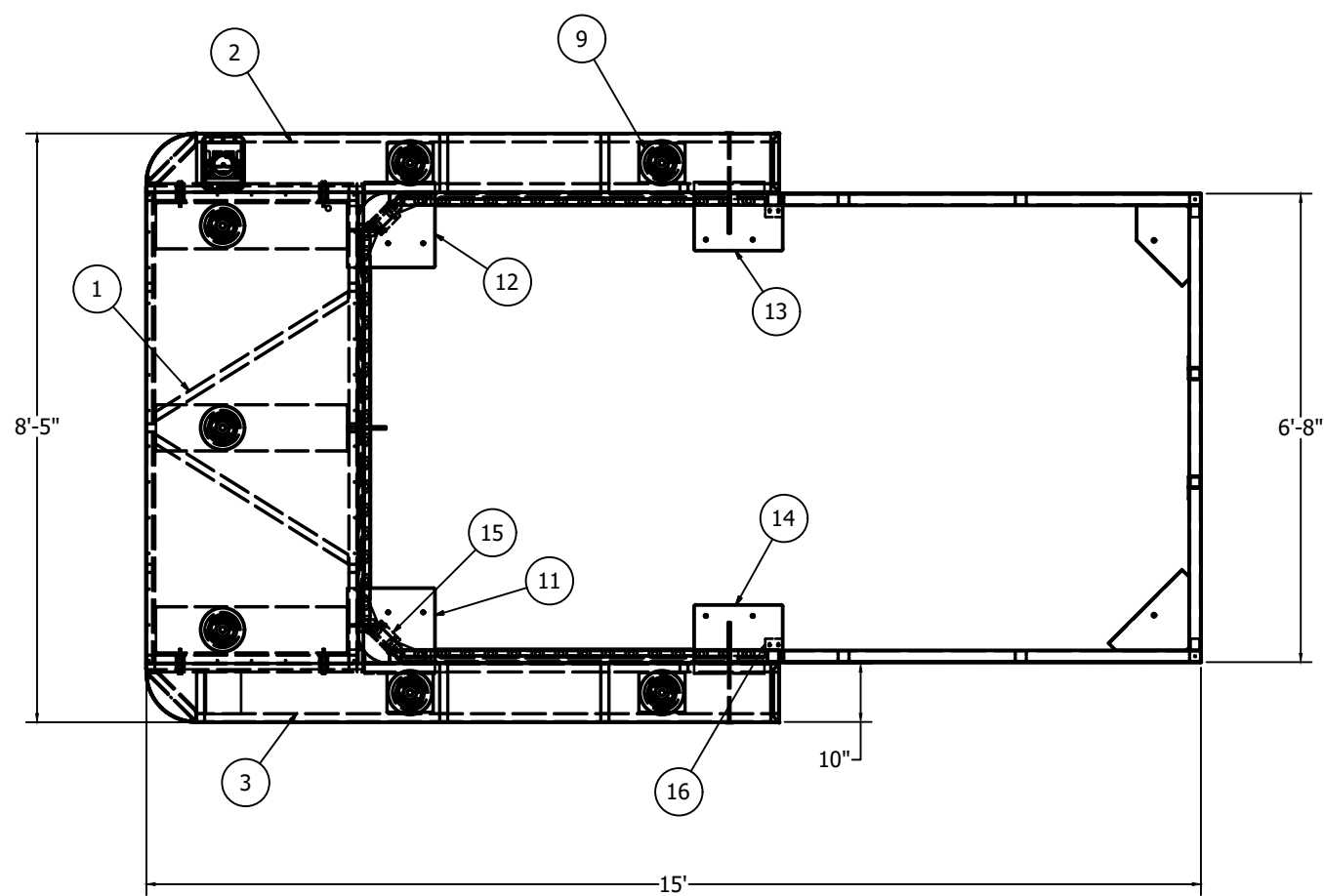
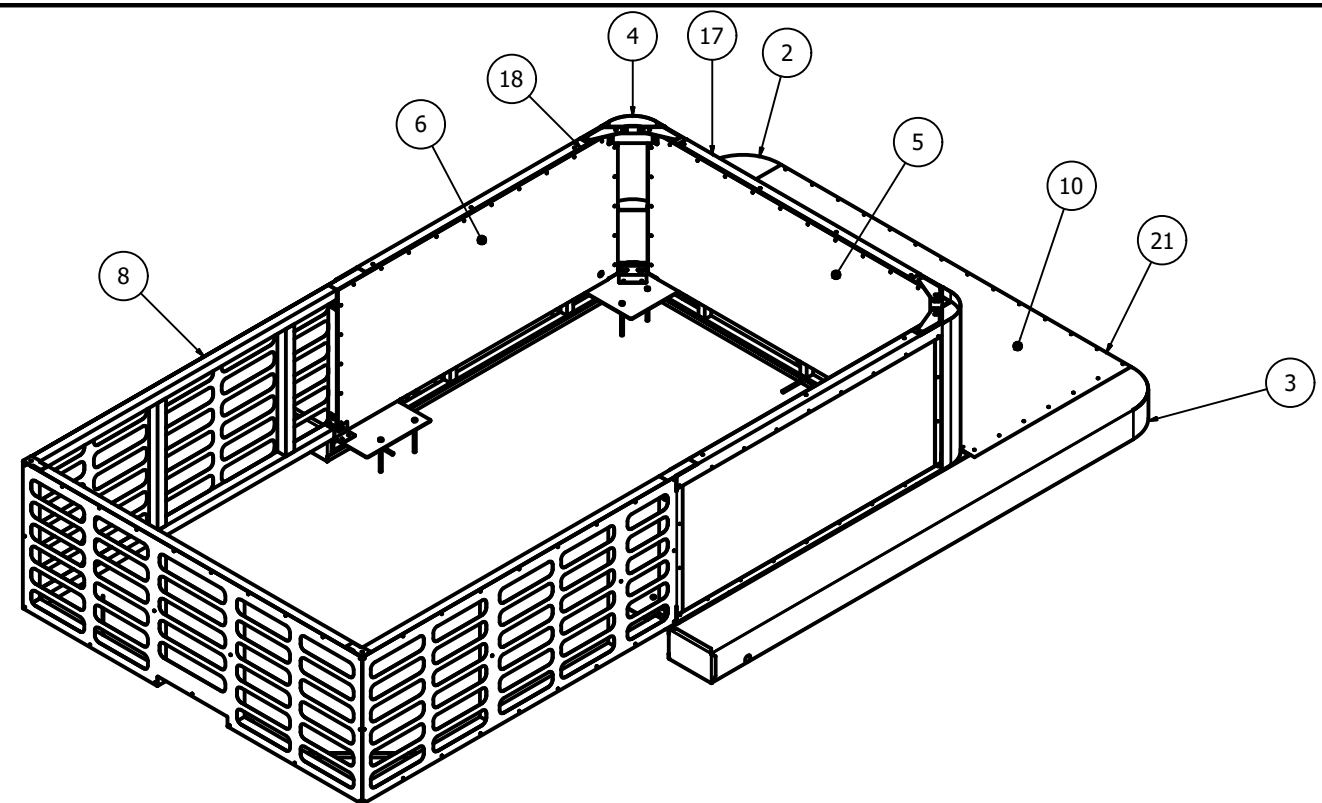
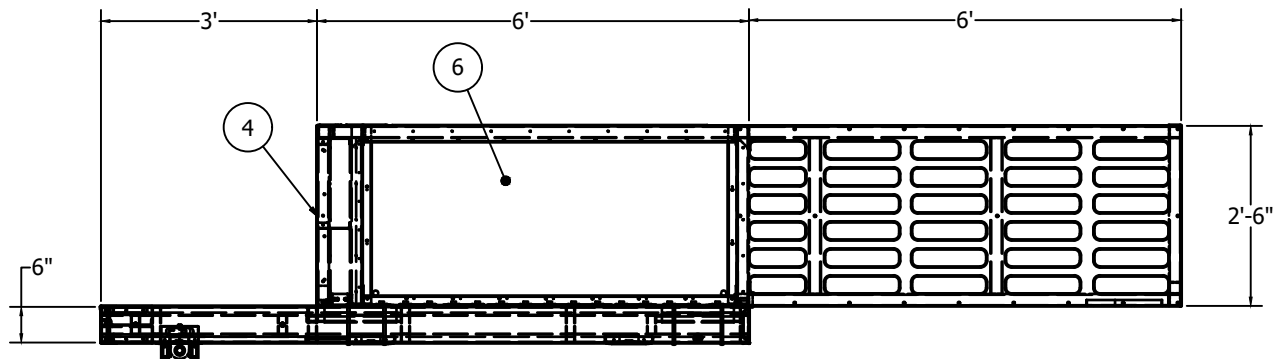
NOTE: SEE DWG D3
DETAILS & NOTES

Professional Engineer Seal for Eric J. Tompos, License No. 63511, State of Florida, dated 10/13/21.

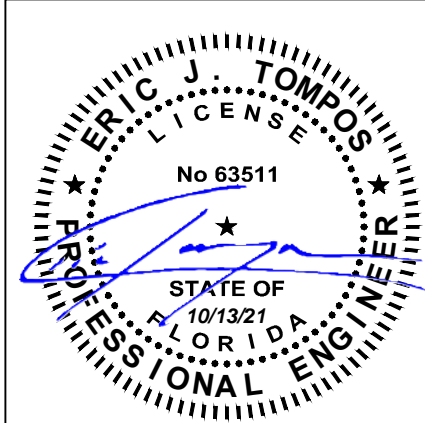
ICC NTA, LLC, 305 N Oakland Ave
Nappanee, Indiana 46550 Engineering COA # 33677

These documents are applicable only to the elements and loading criteria specifically provided herein. These documents shall not be construed in any way to specify, certify or design any aspects of the building not contained herein. Specified design criteria are based solely on information provided by the client and must be verified and approved by the local authority having jurisdiction. ICC NTA, LLC is not responsible for fabrication or erection. If it is suspected that these documents have been modified, substituted or altered in any way, contact ICC NTA, LLC at (574) 773-7975 to obtain a file copy.

REVISIONS:	SCALE: NTS	APPROVED BY:	Ice House America Jacksonville, FL 32224	TITLE: ANCHOR SYSTEM LAYOUT	JOB NO: ICE052521-55
	DATE: 12/10/2020	DRAWN BY: AI		MODEL: 12' IVK	DRAWING NO: D-5A

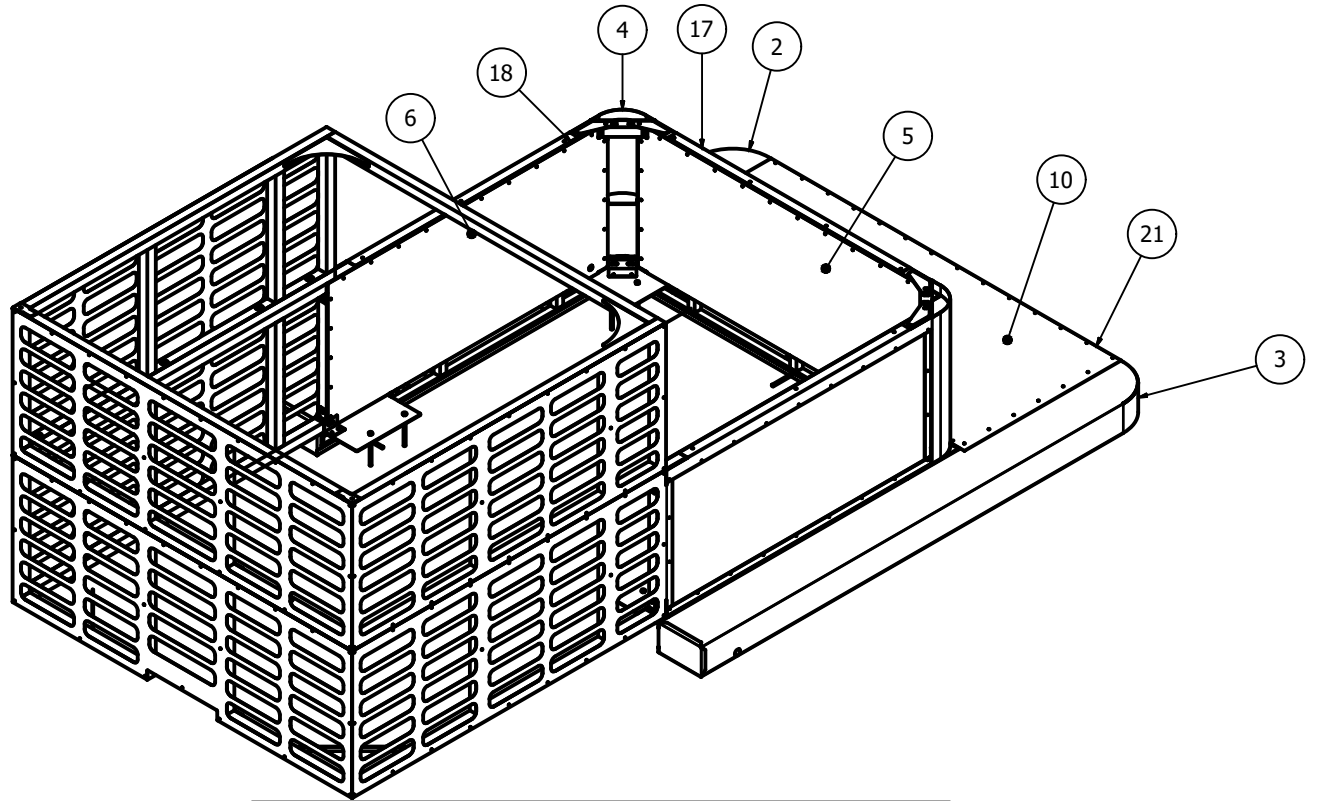
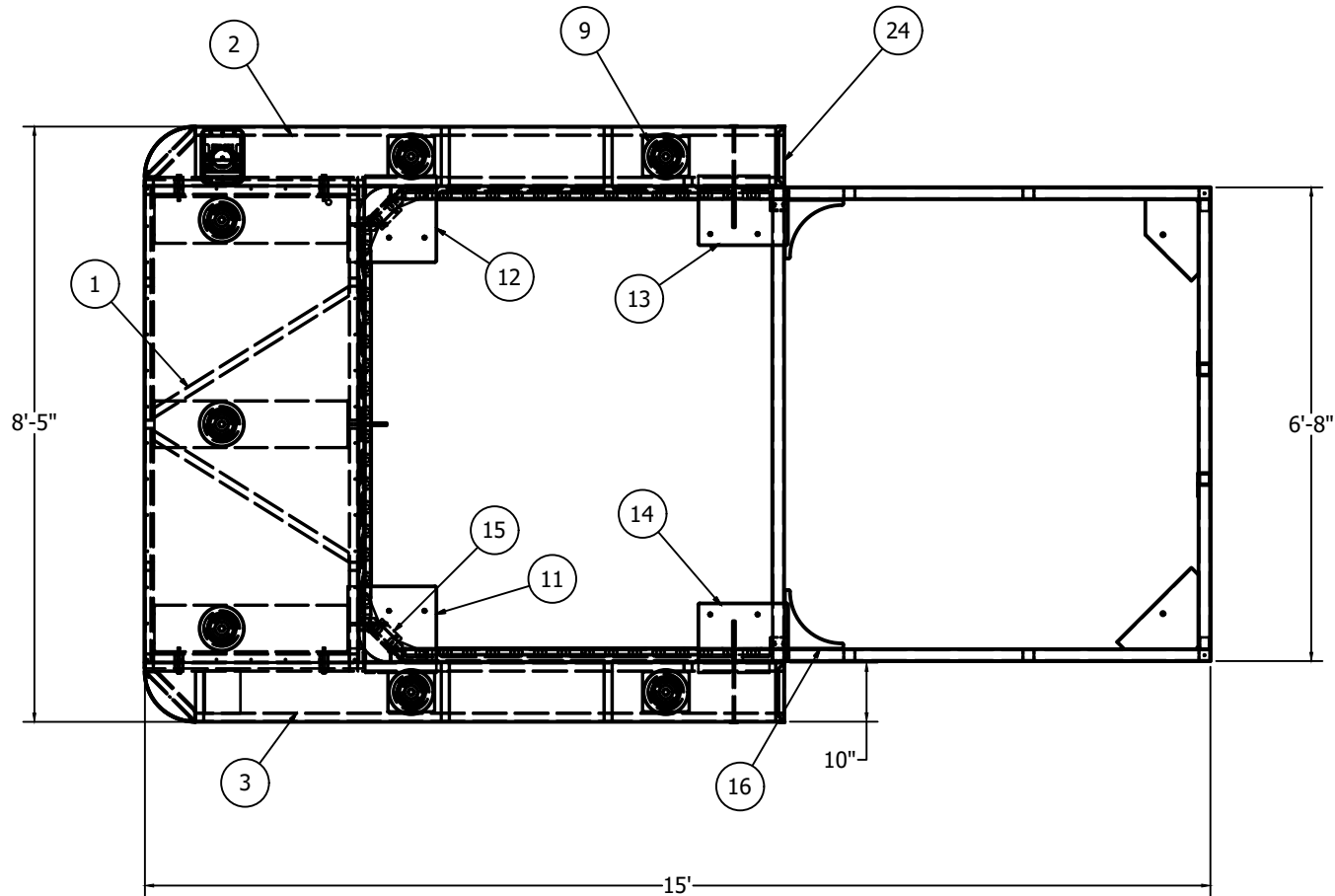
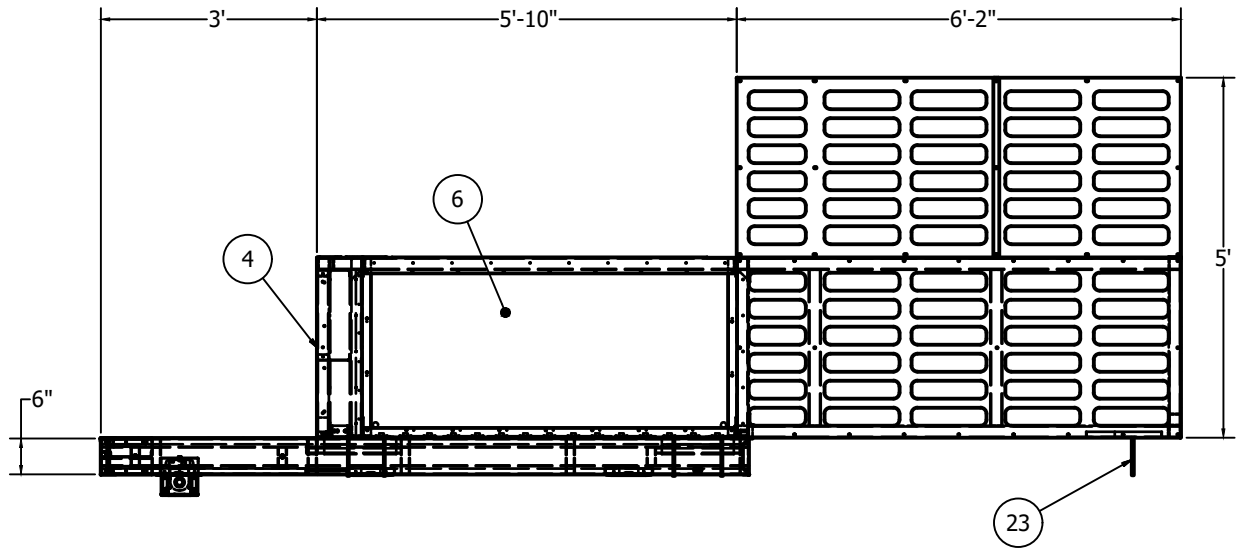


PARTS LIST			
ITEM	QTY	PART NUMBER	DESCRIPTION
1	1	S00511	WLDMT,Front Frame Top Hat IVK
2	1	S00540	ASM, Side Frame A, Top Hat IVK
3	1	S00541	ASM, Side Frame B, Top Hat IVK
4	2	S00513	ASM, Top Hat Corner, IVK
5	1	S00514	Asm, Front panel Top Hat, IVK
6	2	S00515	Asm, Side panel Top Hat, IVK
7	1	S00517	WLDMT, Rear C/M, Top Hat IVK
8	2	S00525	ASM, Rear Vent Panel
9	7	H01719	Lights, 6" Recessed LED 23W
10	1	H02622	Cover, Front Section, Top Hat
11	1	H02627	BRKT,FRT Corner MTG A Top Hat
12	1	H02628	BRKT,FRT Corner MTG B Top Hat
13	1	H02629	BRKT, Rear End MTG Side A
14	1	H02630	BRKT, Rear End MTG Side B
15	2	H02764	BRKT, Corner Support, Top Hat
16	2	H03001	BRKT, Side Support, 3"x3.8" L
17	1	S00546	WLDMT, Front CM, IVK Top Hat
18	1	S00636	WLDMT, Side A CM, IVK Top Hat
19	1	S00637	WLDMT, Side B CM, IVK Top Hat
20	2	H02623	AL Sq.Tube, 2" x 2" x 28"L
21	1	H02621	Skin, Front Section, Top Hat
22	4	H01787	HHCS, SS 3/8"-16 x 4" L
23	11	H01023	HHCS, SS 3/8"-16 x6.5
24	2	H03027	Stud, 3/8"-16x6' SS Threaded
25	2	H03028	Head, Stud, Dia 1 -1/4"

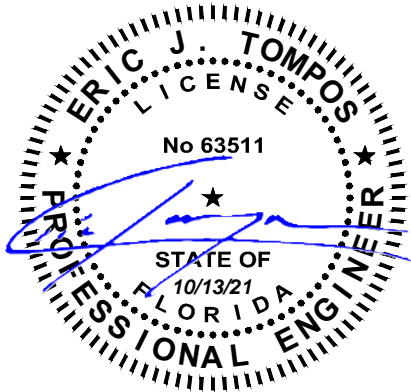


ICC NTA, LLC, 305 N Oakland Ave
Nappanee, Indiana 46550 Engineering COA # 33677
These documents are applicable only to the elements and loading criteria specifically provided herein. These documents shall not be construed in any way to specify, certify or design any aspects of the building not contained herein. Specified design criteria are based solely on information provided by the client and must be verified and approved by the local authority having jurisdiction. ICC NTA, LLC is not responsible for fabrication or erection. If it is suspected that these documents have been modified, substituted or altered in any way, contact ICC NTA, LLC at (574) 773-7975 to obtain a file copy.

REVISIONS:	SCALE: NTS	APPROVED BY:	Ice House America Jacksonville, FL 32224	TITLE: TOP HAT AWNING ASSEMBLY	JOB NO: ICE052521-55
	DATE: 12/10/2020	DRAWN BY: AI		MODEL: 12' IVK	DRAWING NO: A-1A



PARTS LIST			
ITEM	QTY	PART NUMBER	DESCRIPTION
1	1	S00511	WLDMT,Front Frame Top Hat IVK
2	1	S00540	ASM, Side Frame A, Top Hat IVK
3	1	S00541	ASM, Side Frame B, Top Hat IVK
4	2	S00513	ASM, Top Hat Corner, IVK
5	1	S00514	Asm, Front panel Top Hat, IVK
6	2	S00515	Asm, Side panel Top Hat, IVK
7	1	S00517	WLDMT, Rear C/M, Top Hat IVK
8	2	S00525	ASM, Rear Vent Panel
9	7	H01719	Lights, 6" Recessed LED 23W
10	1	H02622	Cover, Front Section, Top Hat
11	1	H02627	BRKT,FRT Corner MTG A Top Hat
12	1	H02628	BRKT,FRT Corner MTG B Top Hat
13	1	H02629	BRKT, Rear End MTG Side A
14	1	H02630	BRKT, Rear End MTG Side B
15	2	H02764	BRKT, Corner Support, Top Hat
16	2	H03001	BRKT, Side Support, 3"x3.8" L
17	1	S00546	WLDMT, Front CM, IVK Top Hat
18	1	S00636	WLDMT, Side A CM, IVK Top Hat
19	1	S00637	WLDMT, Side B CM, IVK Top Hat
20	2	H02623	AL Sq.Tube, 2" x 2" x 28"L
21	1	H02621	Skin, Front Section, Top Hat
22	4	H01787	HHCS, SS 3/8"-16 x 4" L
23	11	H01023	HHCS, SS 3/8"-16 x6.5
24	2	H03027	Stud, 3/8"-16x6' SS Threaded
25	2	H03028	Head, Stud, Dia 1 -1/4"

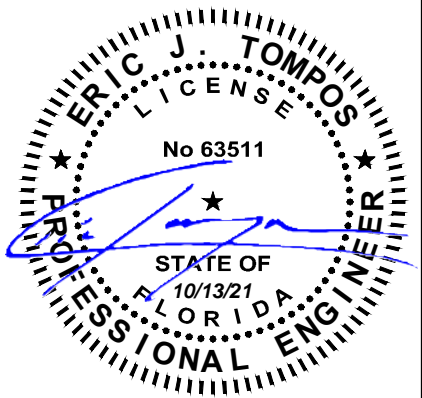
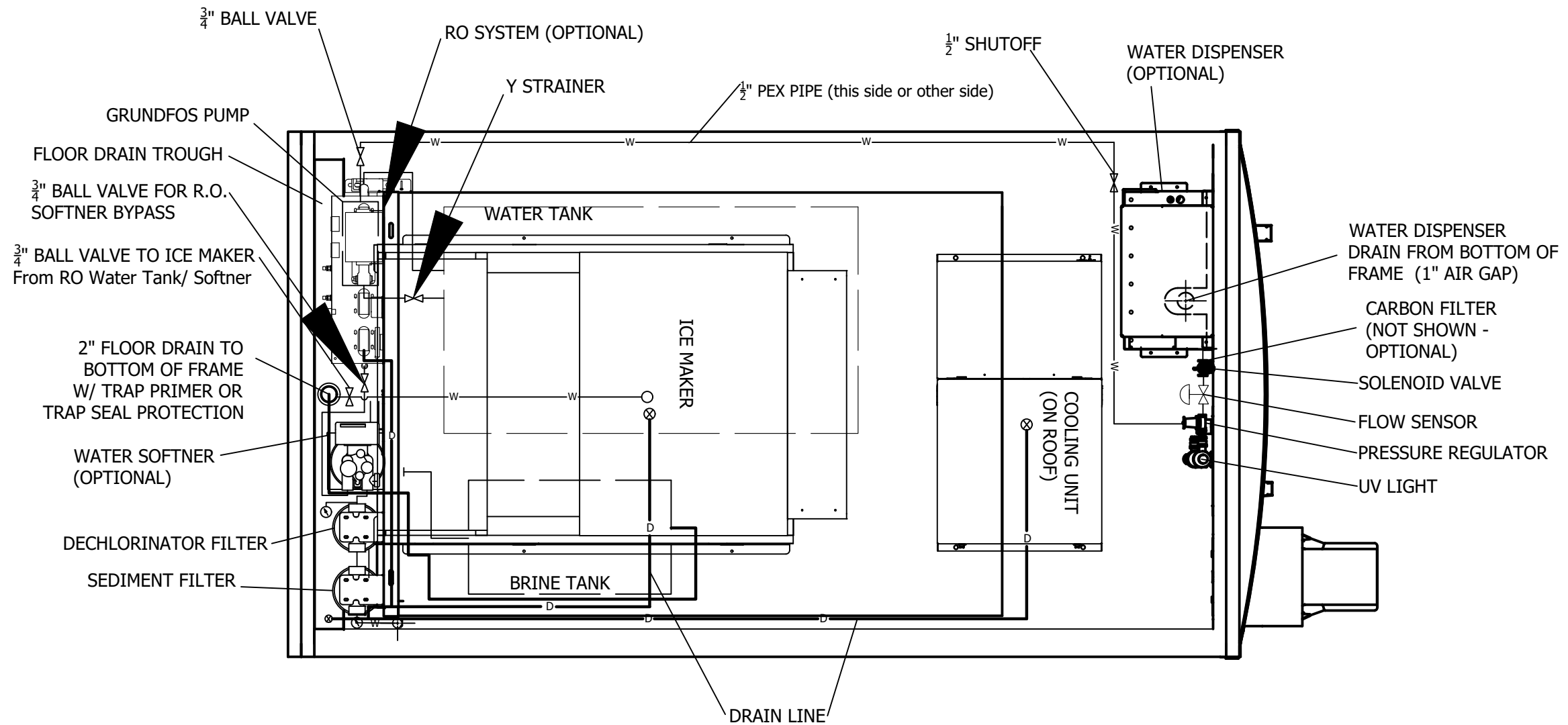


ICC NTA, LLC, 305 N Oakland Ave
Nappanee, Indiana 46550 Engineering COA # 33677
These documents are applicable only to the elements and loading criteria specifically provided herein. These documents shall not be construed in any way to specify, certify or design any aspects of the building not contained herein. Specified design criteria are based solely on information provided by the client and must be verified and approved by the local authority having jurisdiction. ICC NTA, LLC is not responsible for fabrication or erection. If it is suspected that these documents have been modified, substituted or altered in any way, contact ICC NTA, LLC at (574) 773-7975 to obtain a file copy.

REVISIONS:	SCALE: NTS	APPROVED BY:
	DATE: 12/10/2020	DRAWN BY: AI

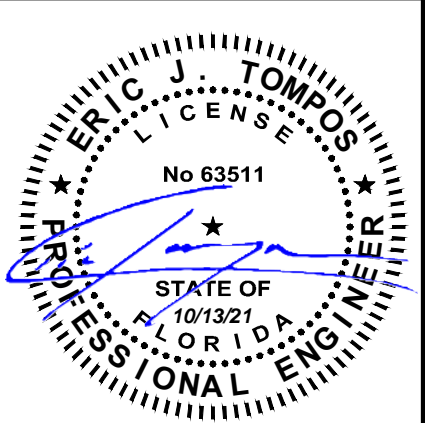
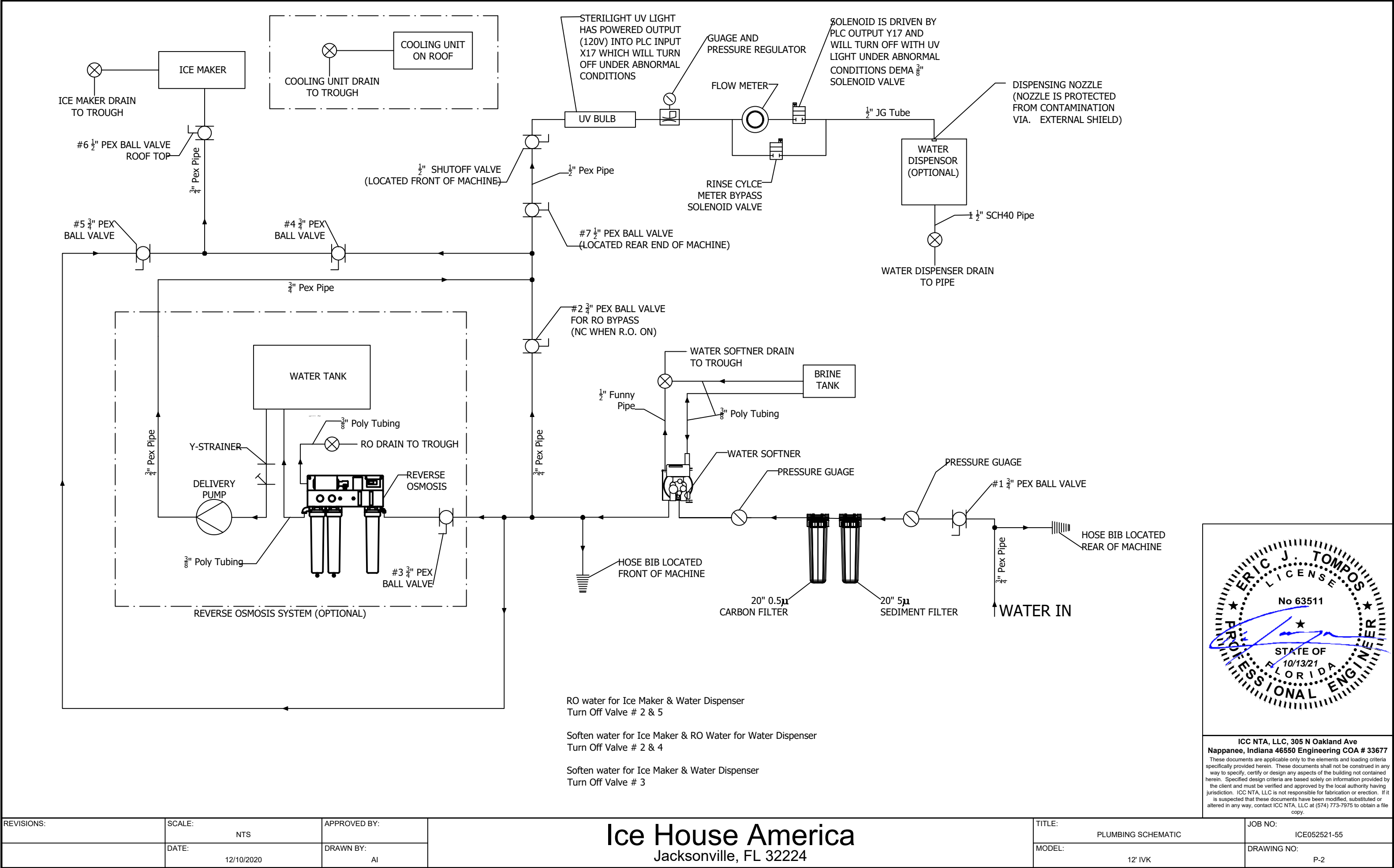
Ice House America
Jacksonville, FL 32224

TITLE: TOP HAT AWNING ASSEMBLY W/ 60"H IM VENT SCREEN	JOB NO: ICE052521-55
MODEL: 12' IVK	DRAWING NO: A-1B



ICC NTA, LLC, 305 N Oakland Ave
Nappanee, Indiana 46550 Engineering COA # 33677
These documents are applicable only to the elements and loading criteria specifically provided herein. These documents shall not be construed in any way to specify, certify or design any aspects of the building not contained herein. Specified design criteria are based solely on information provided by the client and must be verified and approved by the local authority having jurisdiction. ICC NTA, LLC is not responsible for fabrication or erection. If it is suspected that these documents have been modified, substituted or altered in any way, contact ICC NTA, LLC at (574) 773-7975 to obtain a file copy.

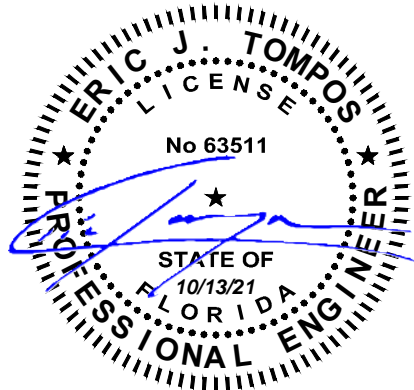
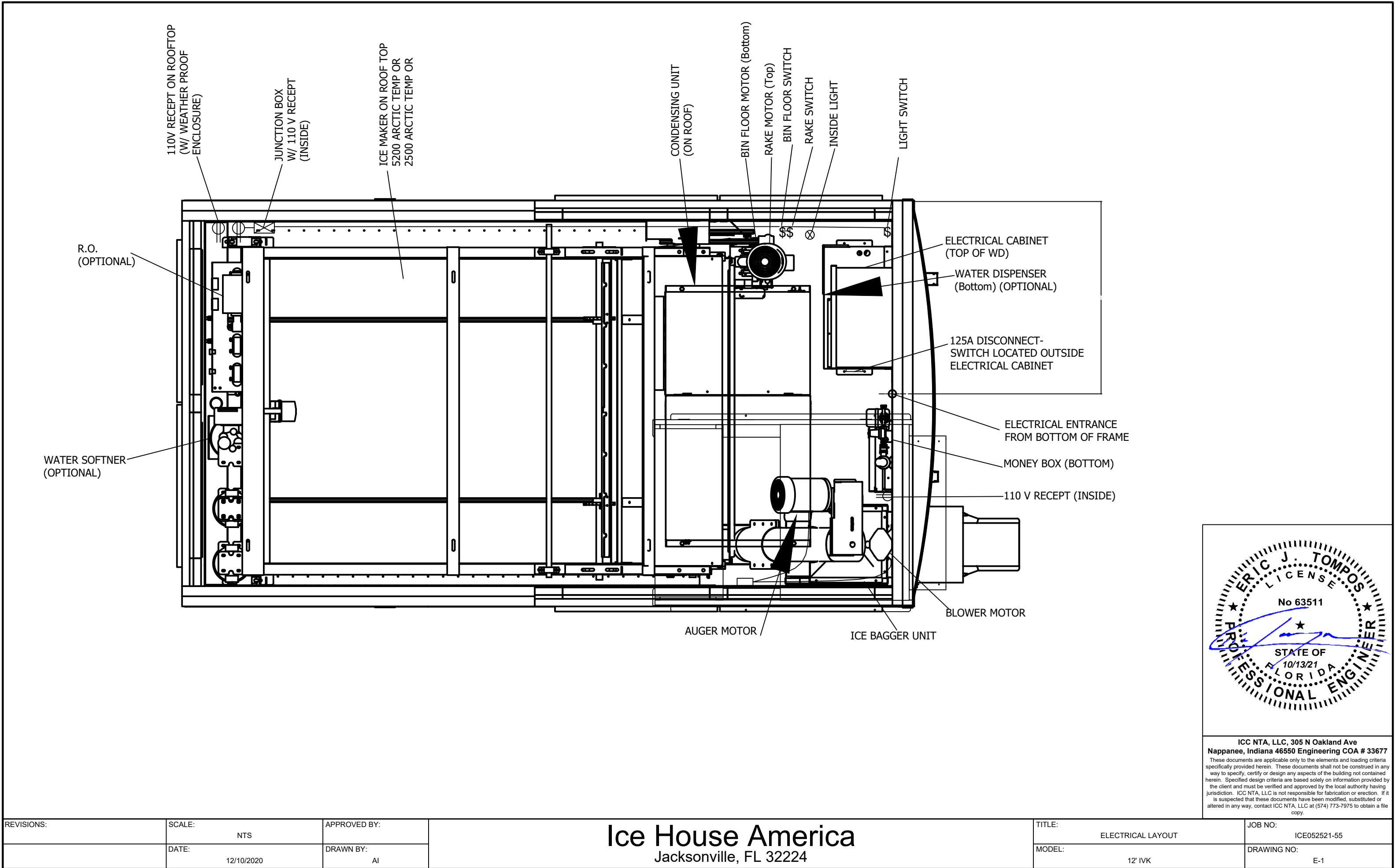
REVISIONS:	SCALE: NTS	APPROVED BY:	Ice House America Jacksonville, FL 32224	TITLE: PLUMBING LAYOUT	JOB NO: ICE052521-55
	DATE: 12/10/2020	DRAWN BY: AI		MODEL: 12' IVK	DRAWING NO: P-1



ICC NTA, LLC, 305 N Oakland Ave
Nappanee, Indiana 46550 Engineering COA # 33677

These documents are applicable only to the elements and loading criteria specifically provided herein. These documents shall not be construed in any way to specify, certify or design any aspects of the building not contained herein. Specified design criteria are based solely on information provided by the client and must be verified and approved by the local authority having jurisdiction. ICC NTA, LLC is not responsible for fabrication or erection. If it is suspected that these documents have been modified, substituted or altered in any way, contact ICC NTA, LLC at (574) 773-7975 to obtain a file copy.

REVISIONS:	SCALE: NTS	APPROVED BY:	Ice House America Jacksonville, FL 32224	TITLE: PLUMBING SCHEMATIC	JOB NO: ICE052521-55
	DATE: 12/10/2020	DRAWN BY: AI		MODEL: 12' IVK	DRAWING NO: P-2



ICC NTA, LLC, 305 N Oakland Ave
Nappanee, Indiana 46550 Engineering COA # 33677

These documents are applicable only to the elements and loading criteria specifically provided herein. These documents shall not be construed in any way to specify, certify or design any aspects of the building not contained herein. Specified design criteria are based solely on information provided by the client and must be verified and approved by the local authority having jurisdiction. ICC NTA, LLC is not responsible for fabrication or erection. If it is suspected that these documents have been modified, substituted or altered in any way, contact ICC NTA, LLC at (574) 773-7975 to obtain a file copy.

REVISIONS:	SCALE: NTS	APPROVED BY:	Ice House America Jacksonville, FL 32224	TITLE: ELECTRICAL LAYOUT	JOB NO: ICE052521-55
	DATE: 12/10/2020	DRAWN BY: AI		MODEL: 12' IVK	DRAWING NO: E-1

DISTRIBUTION PANEL SIZING
120/240-V, 10-Wire, Three Phase

88 ft ² x 3 W/ft ²	0.3 KW
Cooling Unit	1.8 KW
Control	0.6 KW
Lights	0.2 KW
Recepts	1.5 KW
Heaters	1.6 KW
Motors	4.7 KW
Roof Top Recept 1	0.4 KW
Water Disp.	0.07 KW
Water Softner & Opt RO	1.0 KW
Delivery Pump	1.2 KW
Optional RO	0.9 KW
5200 Ice Maker	18.8 KW

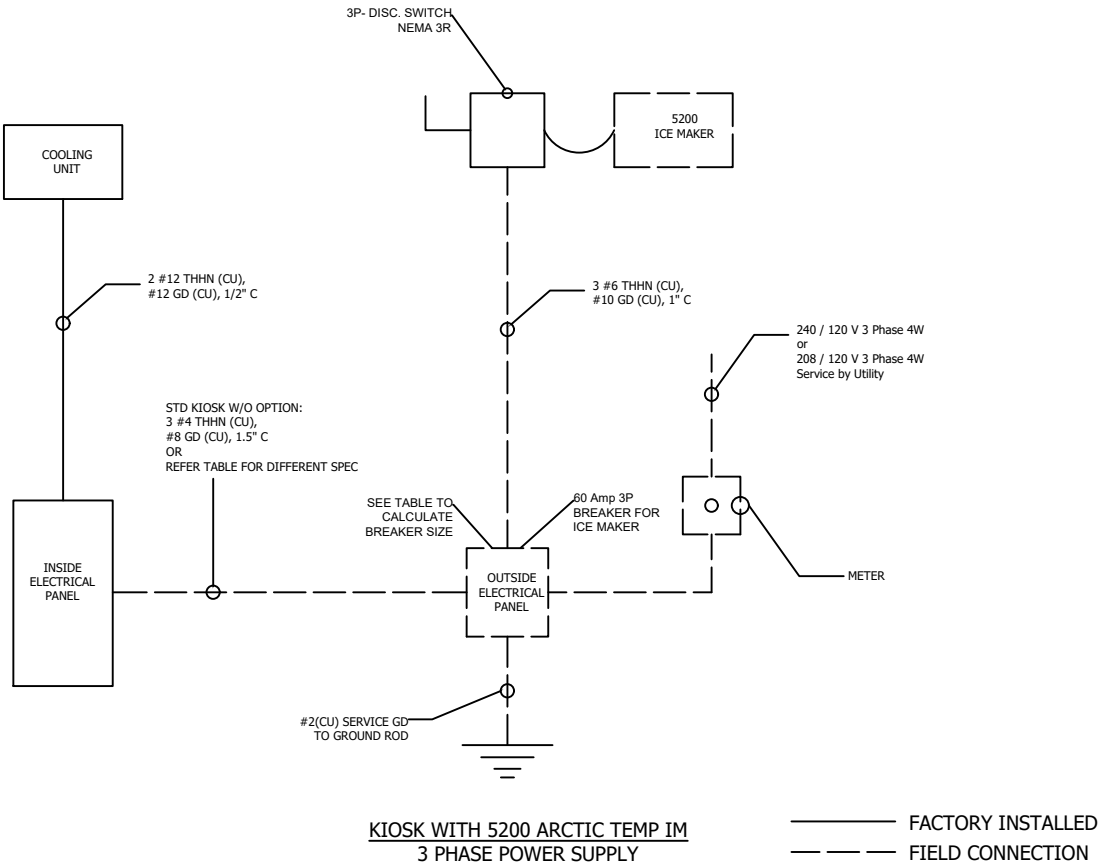
Net Calculated Load 33.1 KW

TOTAL 33.1 KW
33,100 WATTS

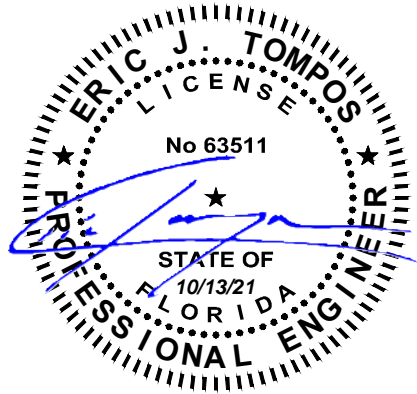
33,100 W / 240 V / $\sqrt{3}$ = 80 A Service Rating

INSIDE SERVICE PANEL		
Ckt #	Load	Breaker Size
1	Cooling Unit	20 Amp 2 Pole
2	Control (PIC & All sensors)	20 Amp 1 Pole
3	Lights (Top Hat, VF, Inside)	20 Amp 1 Pole
4	Recept (Air Comp, MDB, SI Modem, Camera, Audio Pkg)	20 Amp 1 Pole
5	Heaters (Etc Cab & M3 Cab Heaters & Cold Weather)	20 Amp 1 Pole
6	Motors (Bin, Rake & Auger Motors and Blower)	30 Amp 2 Pole
7	Roof Top Recept. 1 (Roof Heat Type)	20 Amp 1 Pole
8	Water Disp. (WW MD's, UV light & Yellow Bulb)	20 Amp 1 Pole
9	Water Softner & (Optional) RO Delivery Pump	20 Amp 1 Pole
10	RO (Optional)	20 Amp 1 Pole

Load & Breaker Table (12'/16' Kiosk - 5200 AT IM)			
Detail	Load	Phase	Breaker Size (2P)
Kiosk (No RO, No Cold Weather)	34 AMPS	1	80 AMPS (2P)
RO System R13-1200 (1200 GPD)	18 AMPS	1	
RO System R4X40 (2200 GPD)	25 AMPS	1	
Cold Weather & AT Main Heater	16 AMPS	1	
Kiosk w/ R4X40 RO & CW (No MJ)	54 AMPS	1	125 AMPS (2P)
5200 Ice Maker Only	45 AMPS	3	60 AMPS (3P)



- Notes:
- ALL ELECTRICAL EQUIPMENT SHALL MEET WORKING CLEARANCE REQUIREMENT.
 - ALL FIXTURES SHALL BE SECURED TO STRUCTURE.
 - ALL FLEX SHALL CONTAIN FULL SIZE GREEN GROUND. NO ALUMINUM BONDS OR CONDUCTORS.
 - GROUND PER NEC CODES.
 - LOAD & BREAKER TABLE IS FOR GENERAL REFERENCE ONLY. CALCULATE LOAD SIZE BASED ON ACTUAL MACHINE SPECIFICATION.



ICC NTA, LLC, 305 N Oakland Ave
Nappanee, Indiana 46550 Engineering COA # 33677

These documents are applicable only to the elements and loading criteria specifically provided herein. These documents shall not be construed in any way to specify, certify or design any aspects of the building not contained herein. Specified design criteria are based solely on information provided by the client and must be verified and approved by the local authority having jurisdiction. ICC NTA, LLC is not responsible for fabrication or erection. If it is suspected that these documents have been modified, substituted or altered in any way, contact ICC NTA, LLC at (574) 773-7975 to obtain a file copy.

REVISIONS:	SCALE: NTS	APPROVED BY:	Ice House America Jacksonville, FL 32224	TITLE: ELECTRICAL RISER 5200 AT IM 3 PHASE	JOB NO: ICE052521-55
	DATE: 12/10/2020	DRAWN BY: AI		MODEL: 12' IVK	DRAWING NO: E-2B

DISTRIBUTION PANEL SIZING
120/240-V, 10-Wire, Single Phase

88 ft ² x 3 W/ft ²	0.3 KW
Cooling Unit	1.8 KW
Control	0.6 KW
Lights	0.2 KW
Recepts	1.5 KW
Heaters	1.6 KW
Motors	4.7 KW
Roof Top Recept 1	0.4 KW
Water Disp.	0.07 KW
Water Softner & Opt RO	1.0 KW
Delivery Pump	1.2 KW
Optional RO	0.9 KW
5200 Ice Maker	17.6 KW

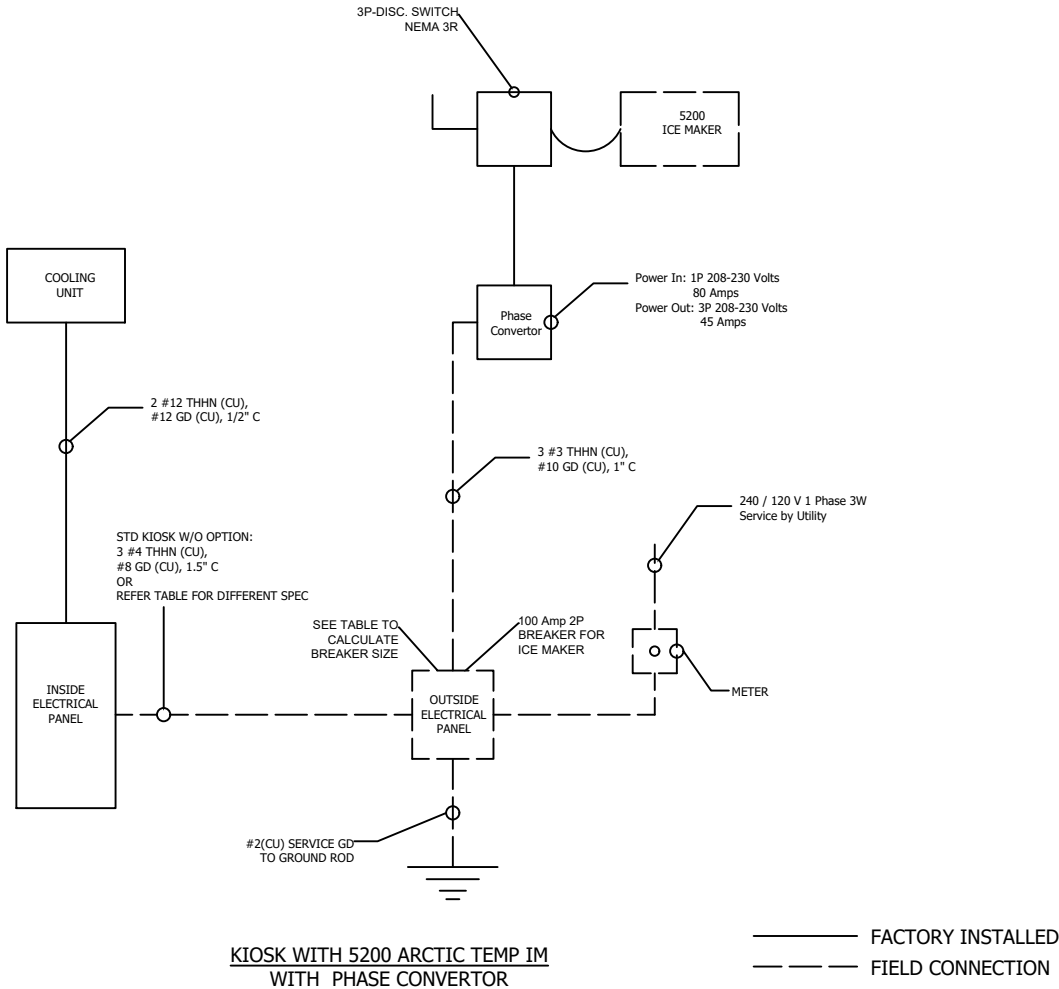
Net Calculated Load 31.9 KW

TOTAL 31.9 KW
31,900 WATTS

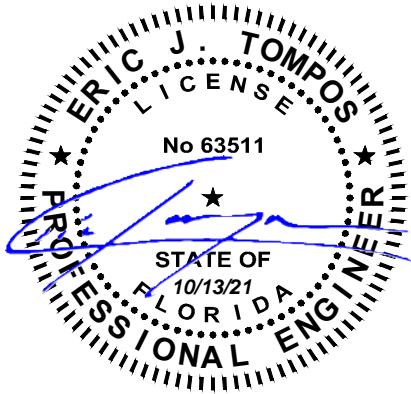
31,900 W / 240 V = 133 A Service Rating

Ckt #	INSIDE SERVICE PANEL Load	Breaker Size
1	Cooling unit	20 Amp 2 Pole
2	Control (PLC & All sensors)	20 Amp 1 Pole
3	Lights (Top Lin., VT, inside)	20 Amp 1 Pole
4	Recept (Air Comp., VFD, SI Modem, Camera, Audio Pkg.)	20 Amp 1 Pole
5	Heaters (Ele. Cab & ME Cab Heaters & Cold Weather)	20 Amp 1 Pole
6	Motors (Bin, Sack & Auger Motors and Blower)	30 Amp 2 Pole
7	Roof Top Recept 1 (Roof Heat Tap)	20 Amp 1 Pole
8	Water Disp. (WV VFD, .5V High, & Yellow Bulb)	20 Amp 1 Pole
9	Water Softner & (Optional) RO Delivery Pump	20 Amp 1 Pole
10	RO (Optional)	20 Amp 1 Pole

Load & Breaker Table (12'/16' Kiosk - 5200 AT IM)			
Detail	Load	Phase	Breaker Size (2P)
Kiosk (No RO, IM or Cold Weather)	54 AMPs	1	80 AMPs (2P)
RO System R13 (200) (200 GPD)	15 AMPs	1	
RO System R4X40 (2200 GPD)	25 AMPs	1	
Cold Weather & AT IM Par Heater	15 AMPs	1	
Kiosk W/ R4X40 RO & CW (No IM)	94 AMPs	1	125 AMPs (2P)
5200 IM Only (W/ Phase converter)	73 AMPs	1	100 AMPs (2P)



- Notes:
1. ALL ELECTRICAL EQUIPMENT SHALL MEET WORKING CLEARANCE REQUIREMENT.
 2. ALL FIXTURES SHALL BE SECURED TO STRUCTURE.
 3. ALL FLEX SHALL CONTAIN FULL SIZE GREEN GROUND. NO ALUMINUM BONDS OR CONDUCTORS.
 4. GROUND PER NEC CODES.
 5. LOAD & BREAKER TABLE IS FOR GENERAL REFERENCE ONLY. CALCULATE LOAD SIZE BASED ON ACTUAL MACHINE SPECIFICATION.



ICC NTA, LLC, 305 N Oakland Ave
Nappanee, Indiana 46550 Engineering COA # 33677
These documents are applicable only to the elements and loading criteria specifically provided herein. These documents shall not be construed in any way to specify, certify or design any aspects of the building not contained herein. Specified design criteria are based solely on information provided by the client and must be verified and approved by the local authority having jurisdiction. ICC NTA, LLC is not responsible for fabrication or erection. If it is suspected that these documents have been modified, substituted or altered in any way, contact ICC NTA, LLC at (574) 773-7975 to obtain a file copy.

REVISIONS:	SCALE: NTS	APPROVED BY:	Ice House America Jacksonville, FL 32224	TITLE: ELECTRICAL RISER 5200 AT IM W/ PHASE CONVERTER	JOB NO: ICE052521-55
	DATE: 12/10/2020	DRAWN BY: AI		MODEL: 12' IVK	DRAWING NO: E-2C

DISTRIBUTION PANEL SIZING
120/240-V, 10-Wire, Single Phase

88 ft ² x 3 W/ft ²	0.3 KW
Cooling Unit	1.8 KW
Control	0.6 KW
Lights	0.2 KW
Recepts	1.5 KW
Heaters	1.6 KW
Motors	4.7 KW
Roof Top Recept 1	0.4 KW
Water Disp.	0.07 KW
Water Softner & Opt RO	1.0 KW
Delivery Pump	1.2 KW
Optional RO	0.9 KW
2500 Ice Maker	10.4 KW

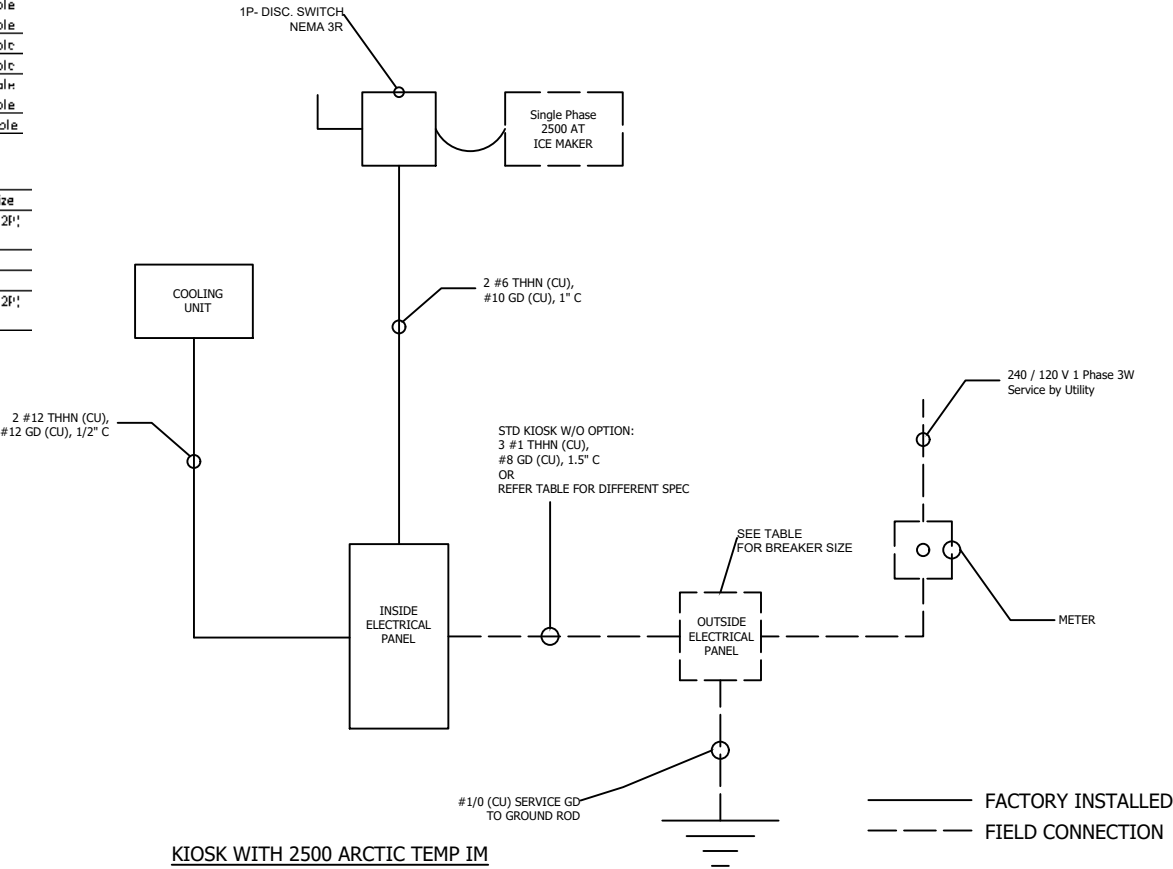
Net Calculated Load 24.7 KW

TOTAL 24.7 KW
24,700 WATTS

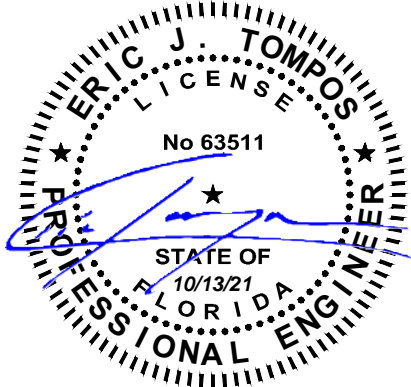
24,700 W / 240 V = 103 A Service Rating

INSIDE SERVICE PANEL		
Ckt #	Load	Breaker Size
1	Cooling Unit	20 Amp 2 Pole
2	Control (PLC & All sensors)	20 Amp 1 Pole
3	Lights (Top Hat, V.F. Inside)	20 Amp 1 Pole
4	Recept (Air Comp, MIBs, SI Modern, Camera, Audio Pkg)	20 Amp 1 Pole
5	Heaters (Ele Cab & MIB Cab Heaters & Cold Weather)	20 Amp 1 Pole
6	Motors (Bin, Rake & Auger Motors and Blower)	30 Amp 2 Pole
7	Roof Top Recept 1 (Roof Heat Tape)	20 Amp 1 Pole
8	Water Disp, WW MDB, UV Light & Yellow Bulb	20 Amp 1 Pole
9	Water Softner & (Optional) RO Delivery Pump	20 Amp 1 Pole
10	RO (Optional)	20 Amp 1 Pole
11	2500 Ice Maker	60 Amp 2 Pole

Load & Breaker Table (12' /16' Kiosk with 2500 AT IM)			
Detail	Load	Phase	Breaker Size
Kiosk W/ IM (No RO or Cold Weather)	99 AMPS	1	125 AMP'S (2P)
RO System 313 1200 (1200 GPD)	18 AMP'S	1	
RO System 34X40 (2700 GPD)	25 AMP'S	1	
Cold Weather & AT IV Pan Heater	16 AMP'S	1	
Kiosk W/ IM, R4X40 RO & CW	140 AMP'S	1	175 AMP'S (2P)
Single Phase 2500 ATIM ONLY	45 AMP'S		



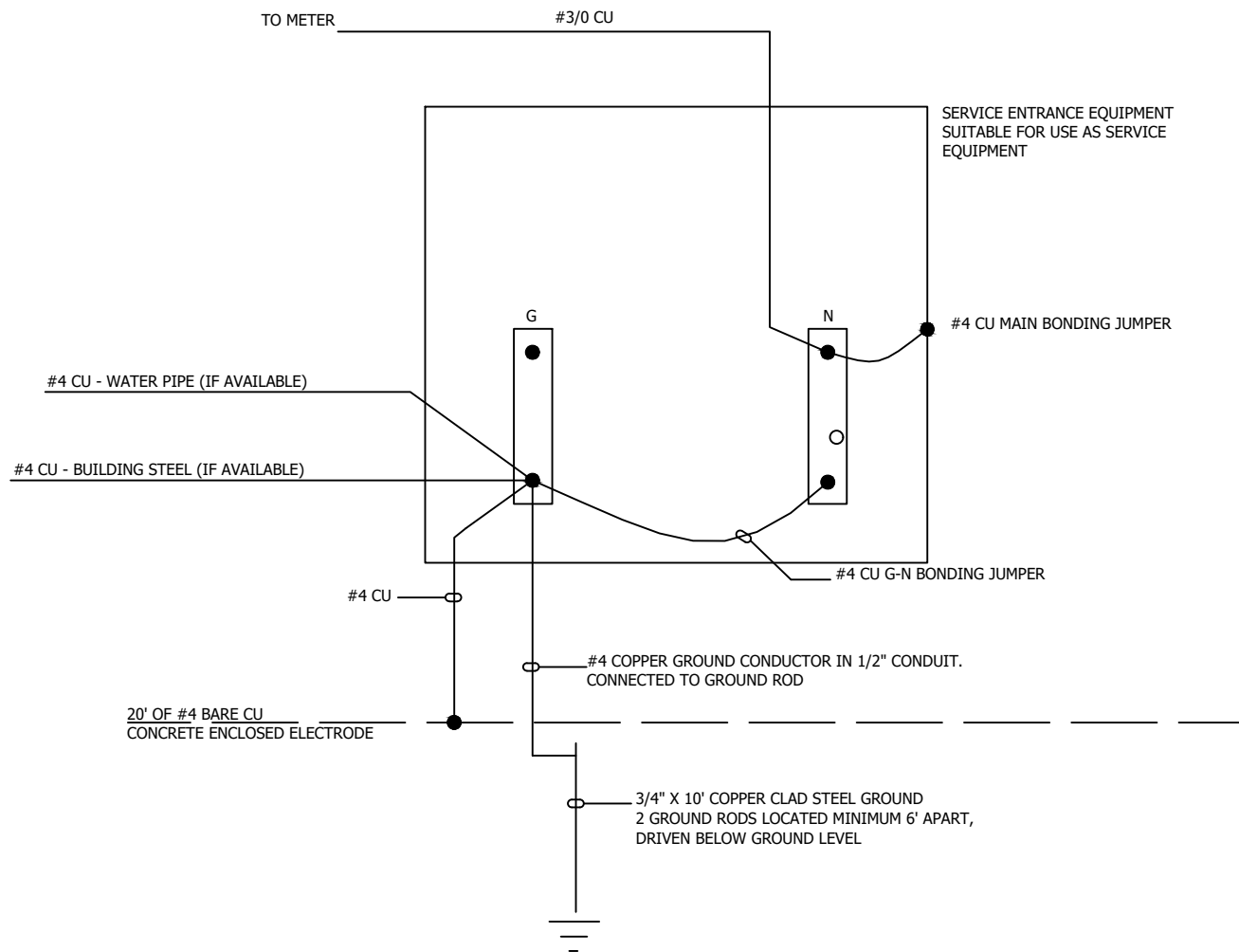
- Notes:
1. ALL ELECTRICAL EQUIPMENT SHALL MEET WORKING CLEARANCE REQUIREMENT.
 2. ALL FIXTURES SHALL BE SECURED TO STRUCTURE.
 3. ALL FLEX SHALL CONTAIN FULL SIZE GREEN GROUND. NO ALUMINUM BONDS OR CONDUCTORS.
 4. GROUND PER NEC CODES.
 5. LOAD & BREAKER TABLE IS FOR GENERAL REFERENCE ONLY. CALCULATE LOAD SIZE BASED ON ACTUAL MACHINE SPECIFICATION.



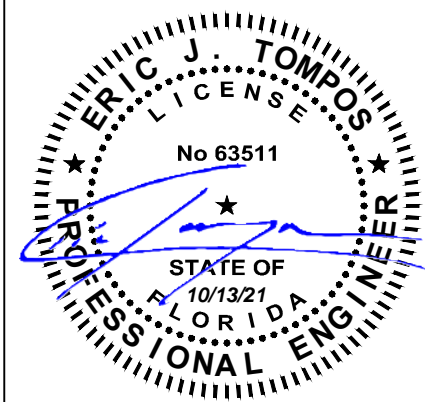
ICC NTA, LLC, 305 N Oakland Ave
Nappanee, Indiana 46550 Engineering COA # 33677

These documents are applicable only to the elements and loading criteria specifically provided herein. These documents shall not be construed in any way to specify, certify or design any aspects of the building not contained herein. Specified design criteria are based solely on information provided by the client and must be verified and approved by the local authority having jurisdiction. ICC NTA, LLC is not responsible for fabrication or erection. If it is suspected that these documents have been modified, substituted or altered in any way, contact ICC NTA, LLC at (574) 773-7975 to obtain a file copy.

REVISIONS:	SCALE: NTS	APPROVED BY:	Ice House America Jacksonville, FL 32224	TITLE: ELECTRICAL RISER 2500 AT ICE MAKER	JOB NO: ICE052521-55
	DATE: 12/10/2020	DRAWN BY: AI		MODEL: 12' IVK	DRAWING NO: E-2D



GROUND DETAIL



ICC NTA, LLC, 305 N Oakland Ave
Nappanee, Indiana 46550 Engineering COA # 33677

These documents are applicable only to the elements and loading criteria specifically provided herein. These documents shall not be construed in any way to specify, certify or design any aspects of the building not contained herein. Specified design criteria are based solely on information provided by the client and must be verified and approved by the local authority having jurisdiction. ICC NTA, LLC is not responsible for fabrication or erection. If it is suspected that these documents have been modified, substituted or altered in any way, contact ICC NTA, LLC at (574) 773-7975 to obtain a file copy.

REVISIONS:	SCALE: NTS	APPROVED BY:	Ice House America Jacksonville, FL 32224	TITLE: GROUNDING DETAIL	JOB NO: ICE052521-55
	DATE: 12/10/2020	DRAWN BY: AI		MODEL: 12' IVK	DRAWING NO: E-3