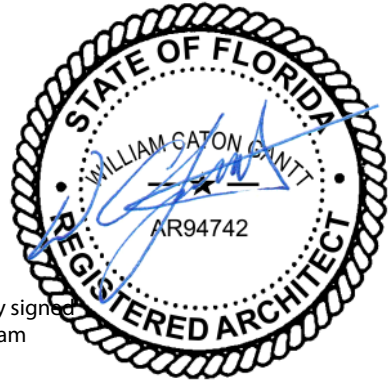




William
m
Gantt

Digitally signed
by William
Gantt
Date:
2022.10.31
14:23:42 -04'00'



AA26004016 • 7416 hatteras drive • Hudson, Florida 34467 • 727.534.5091

#0# y y y y . y y y 4 y T #. ∞

EE. Ey y 4 y T E#

PE y 4 y T P
α P Ω E

T. y 4 y 4 y T . y | E. E
ET δ P ε T P P

E P. y 4 y T O #
T O # O # Q

T # T Ey y 4 y T EE
T 6 P ε # O

Drawing Index and Issue Log			
Sheet Number	Sheet Name		
A000	Cover & Drawing Index		
A001	General Notes & Abbreviations		
A002	Code Data		
A003	Architectural Site Plan		
A004	Life Safety Plan & Wall Types		
A100	Floor Plan & Interior Elevations		
A200	Exterior Elevations		
A300	Reflected Ceiling Plan		
A400	Building & Wall Sections		
A401	Section Details		
A500	Roof Plan & Details		
A600	Door Schedule & Details		
S000	Structural Notes		
S001	Structural Notes		
S100	Foundation Plan		
S200	Roof Framing Plan		
S300	Structural Details		
S400	Structural Elevations		
M-1.01	Mechanical Floor Plan		
M-2.01	Mechanical Notes & Schedules		
M-3.01	Mechanical Legend & Details		
P-1.01	Plumbing Floor Plan		
P-2.01	Plumbing Schedule, Notes and Details		
P-3.01	Plumbing Risers		
E-0.01	Electrical Legend & General Notes		
E-0.02	Electrical Specifications		
E-1.01	Power Plan		
E-2.01	Lighting Plan		
E-2.11	Lighting Photometric Plan		
E-3.01	Riser Diagram		
E-4.01	Panel Schedules		

Revisions

Y
Y
Y
2528 W. US Highway 90 - Lake City, Florida 32055

Cover & Drawing
Index

Project number 2022.01
Date January 27, 2022

A000

FLORIDA PRODUCT APPROVAL DATA

PRODUCT CATEGORY	SUB CATEGORY	MANUFACTURER	MODEL	APPROVAL NO.	APPROVAL DATE	REMARKS
EXTERIOR DOORS	ROLL-UP EXTERIOR DOOR ASSEMBLIES	OVERHEAD DOOR CORPORATION	625	FL 15960-R7	12/15/20	
EXTERIOR DOORS	SWINGING EXTERIOR DOOR ASSEMBLIES	CURRIES DIV. OF AADG, INC.	607	FL 11537-R8	12/21/20	
ROOFING	SINGLE PLY ROOFING SYSTEMS	FIRESTONE BUILDING PRODUCTS CO.	ULTRAPLY TPO	FL 15894-R20	12/15/21	
PANEL WALLS	WALL LOUVER	GREENHECK FAN CORPORATION	AFJ-601X	FL 6876-R11	12/23/20	

NOTE:
IF THE GENERAL CONTRACTOR OR OWNER DECIDE TO SUBMIT ALTERNATE SYSTEMS THAN THOSE LISTED ABOVE, THEN THE GENERAL CONTRACTOR SHALL SUBMIT THE CURRENT MANUFACTURER TEST DATA AND INSTALLATION INSTRUCTIONS TO THE BUILDING DEPARTMENT FOR APPROVAL PRIOR TO PROCUREMENT AND INSTALLATION.

PLUMBING FIXTURE REQUIREMENTS: FBC PLUMBING CHAPTER 4, TABLE 403.1							
FIRST FLOOR							
STORAGE:	WC (URINALS)		LAVATORIES		BATHTUBS SHOWERS	DRINKING FOUNTAIN	OTHER
	MALE	FEMALE	MALE	FEMALE			
TOTAL OCCUPANTS: 15	1 PER 100		1 PER 100		N/A	1 PER 1000	1 SERVICE SINK
REQUIRED	1	1	1	1	---	1	1
PROVIDED	1 (SEE COMMENT 1)		1 (SEE COMMENT 1)		---	2	1
COMMENT: 1. UNISEX RESTROOM PROVIDED SINCE OCCUPANT LOAD IS <16 PER FPC 403.2(2)							

PROJECT SUMMARY

LEGAL JURISDICTION:

COLUMBIA COUNTY, FLORIDA

CODES

BUILDING CODE:

2020 FLORIDA BUILDING CODE 7th EDITION

PLUMBING CODE:

2020 FLORIDA BUILDING CODE 7th EDITION - PLUMBING

ELECTRICAL CODE:

NATIONAL ELECTRIC CODE - 2014 / NFPA 70

MECHANICAL CODE:

2020 FLORIDA BUILDING CODE 7th EDITION - MECHANICAL

LIFE SAFETY CODE:

NFPA 101 - 2015 EDITION

FIRE CODE:

2020 FLORIDA FIRE PREVENTION CODE 7th EDITION

ENERGY CODE:

2020 FLORIDA BUILDING CODE 7th EDITION - ENERGY CONSERVATION

ACCESSIBILITY CODE:

2020 FLORIDA BUILDING CODE 7th EDITION - ACCESSIBILITY

PROJECT DESCRIPTION

NEW SERVICE BUILDING AT EXISTING AUTOMOTIVE DEALERSHIP.

BUILDING AREA (GROSS)

FIRST FLOOR PROPOSED:

4,331 S.F.

COVERED OUTDOOR AREA:

560 S.F.

TOTAL PROPOSED BUILDING AREA:

4,891 S.F.

BUILDING INFORMATION:

CONSTRUCTION TYPE:

TYPE IIB, NON-SPRINKLERED

OCCUPANCY CLASSIFICATION: (PER 2020 FBC 7th Ed.)

STORAGE, S-1

(PER NFPA 101)

FLOOD ZONE:

-

AREA/OCCUPANT LOAD

	AREA	OLF	OCCUPANTS
1ST FLOOR	4,331 SF	300	15
-	-	-	-
TOTAL OCCUPANTS			15

ALLOWABLE BUILDING AREA & HEIGHT

ALLOWABLE BUILDING AREA (FBC TABLE 506.2, S-1 OCCUPANCY):

17,500 S.F.

AREA INCREASE:

NOT REQUIRED

ALLOWABLE BUILDING HEIGHT (FBC TABLE 504.3A, S-1 OCCUPANCY):

55 FEET (16'-2" PROPOSED)

EXITING REQUIREMENTS

EGRESS WIDTH PER OCCUPANT (FBC SECT 1005):

EGRESS-0.2 (PER OCCUPANT)

(NFPA TBL 7.3.3.1):

EGRESS-0.2 (PER OCCUPANT)

EXIT ACCESS TRAVEL DISTANCE (FBC TABLE 1017.2):

200 FT

(NFPA 40.2.6.1):

200 FT

COMMON PATH OF TRAVEL (FBC TABLE 1006.2.1):

100 FT

(NFPA TBL 40.2.5.1):

50 FT

DEAD END CORRIDORS (FBC 1020.4):

20 FT

(NFPA TBL 40.2.5.1):

50 FT

PROJECT LOCATION



Digitally signed by William Gantt
Date: 2022.10.31 14:25:54 -04'00'

AA26004016 • 7416 hatteras drive • hudson, florida 34667 • 727.534.5091

[illegible]

1. SITE PLAN IS SHOWN AS A GENERAL LAYOUT AND REFERENCE. REFER TO CIVIL DRAWINGS FOR SPECIFIC LOCATIONS BUILDING AND SITE COMPONENT LOCATIONS.

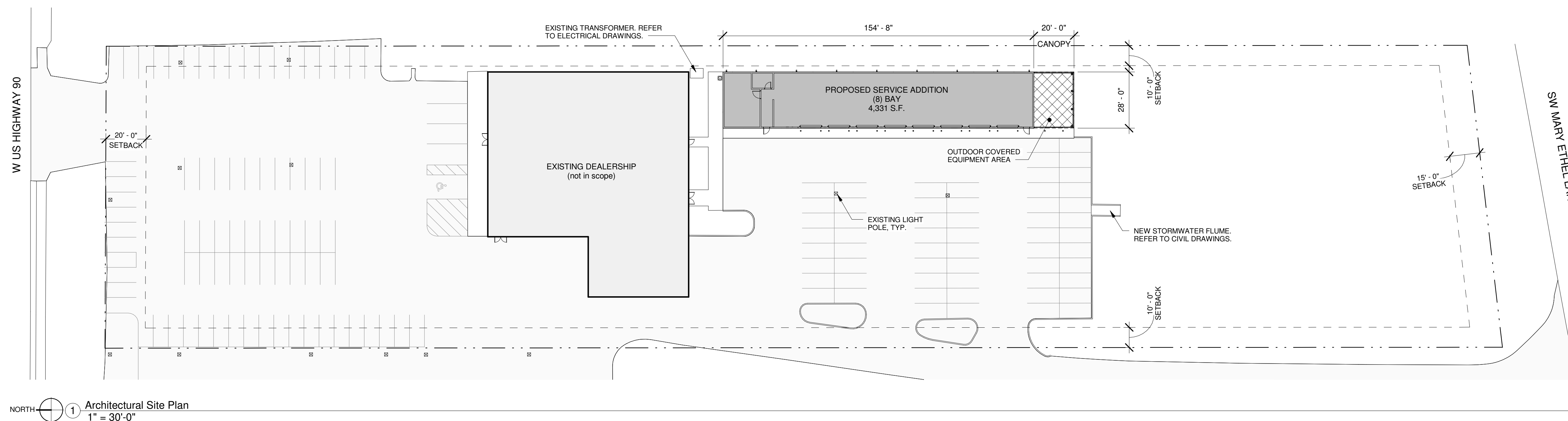
 \geq \geq

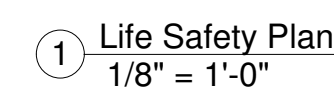
1

➤

Project number	2022.01
Date	January 27, 2022

A003





1. PROVIDE EMERGENCY EGRESS LIGHTING AS SHOWN. GENERAL CONTRACTOR TO VERIFY THAT A MIN. OF 1.0 FOOTCANDLES IS MAINTAINED ALONG ALL EGRESS PATHS.

William Gantt

Digitally signed by William Garfield
Date: 2022.10.31 14:26:33 -04'00'

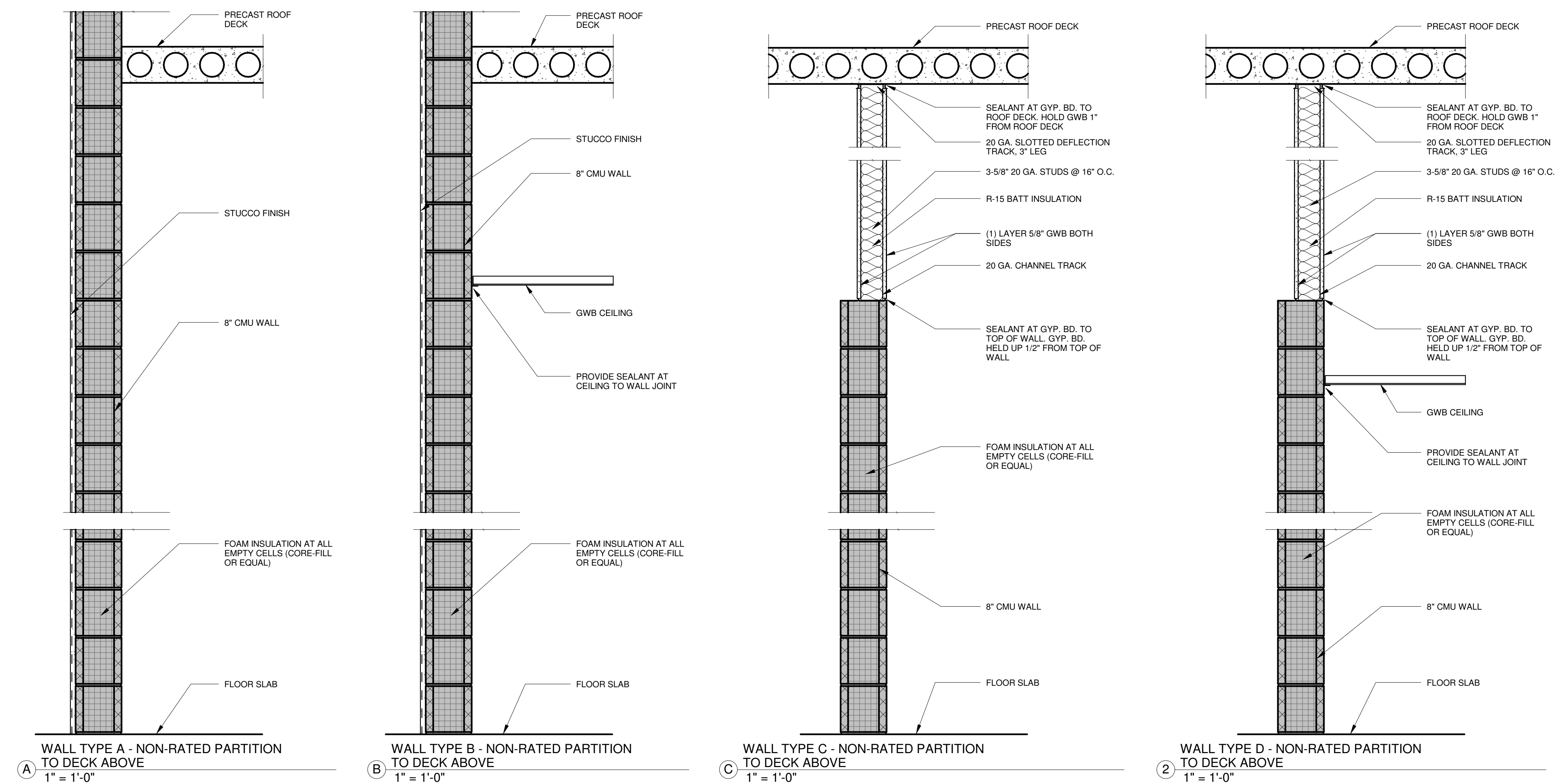
AA26004016 • 7416 hatteras drive • hudson, florida 34667 • 727.534.5091

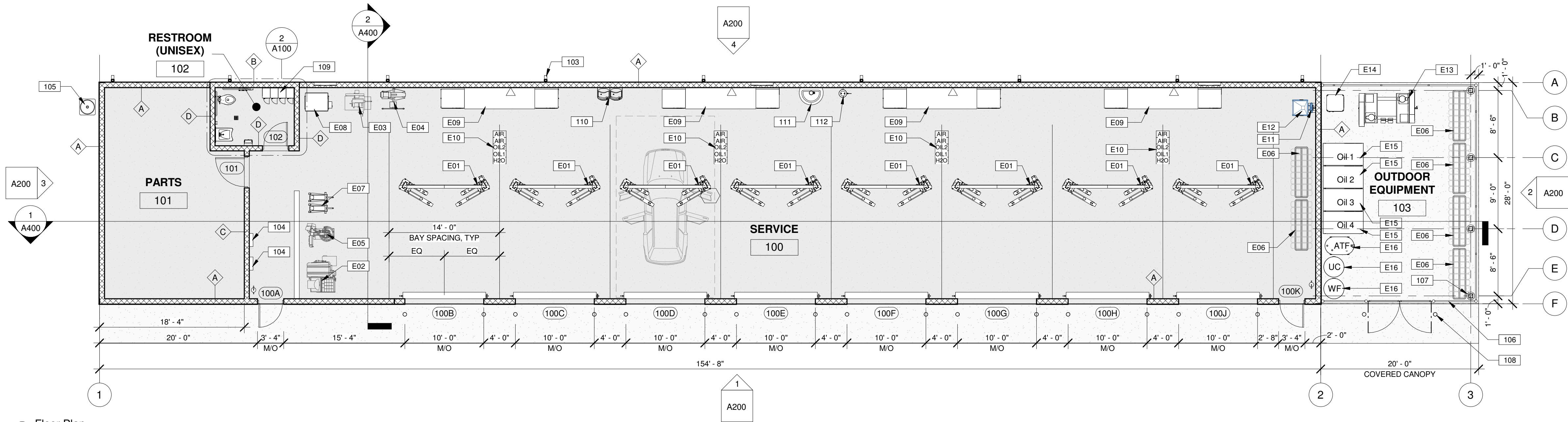
Revisions

γ	γ	γ
----------	----------	----------

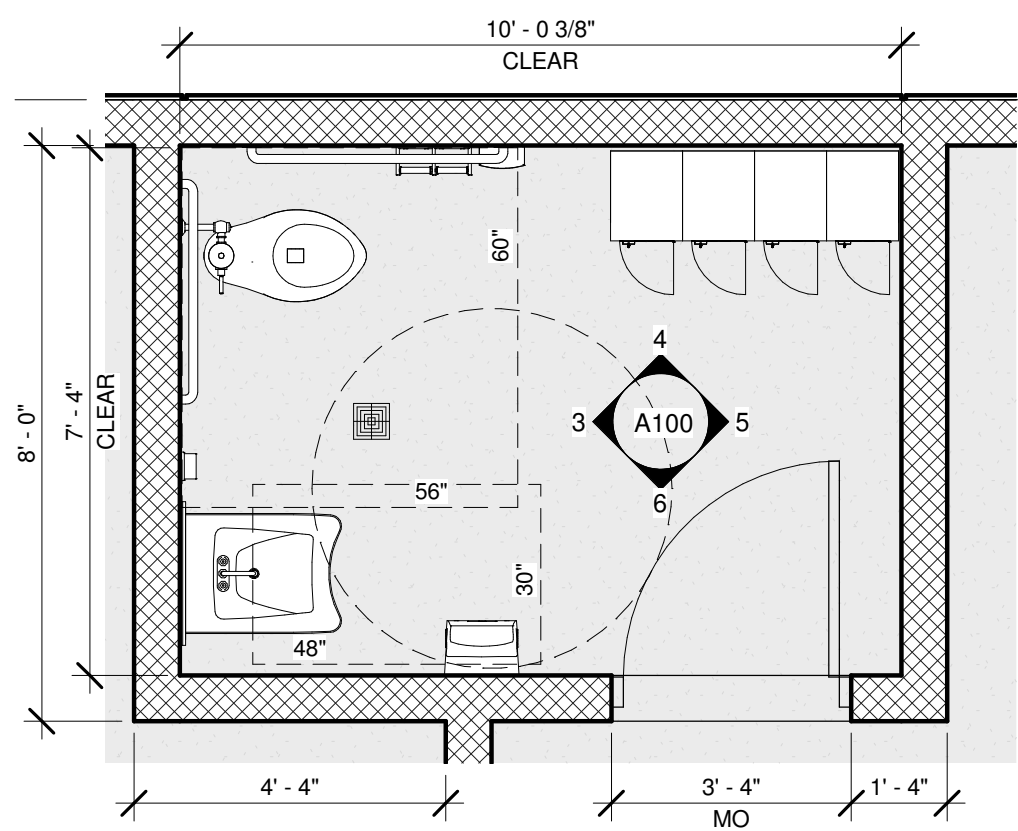
2528 W. US Highway 90 - Lake City, Florida 32055

A004

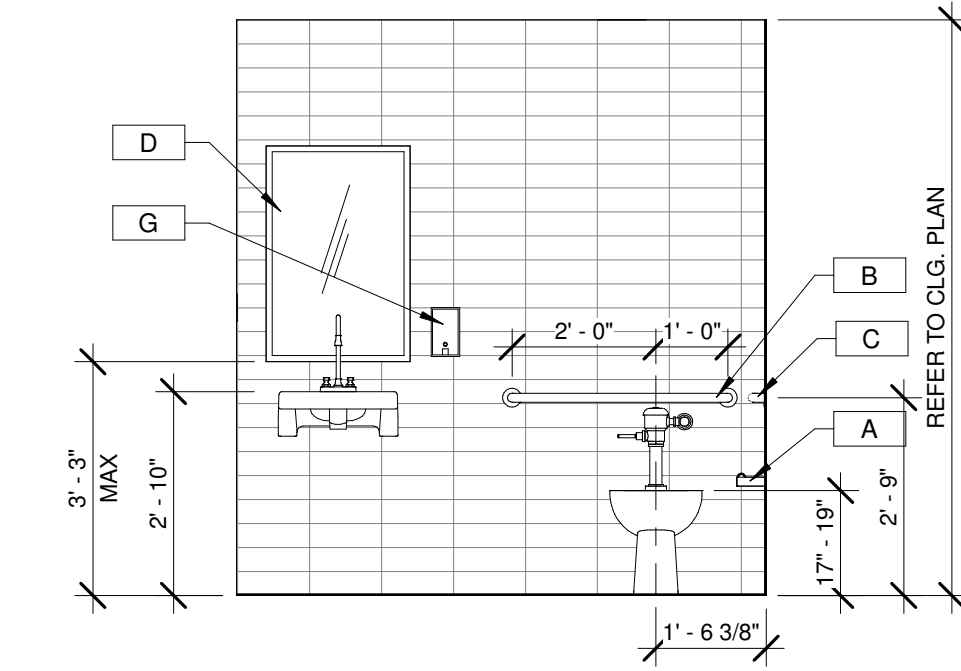




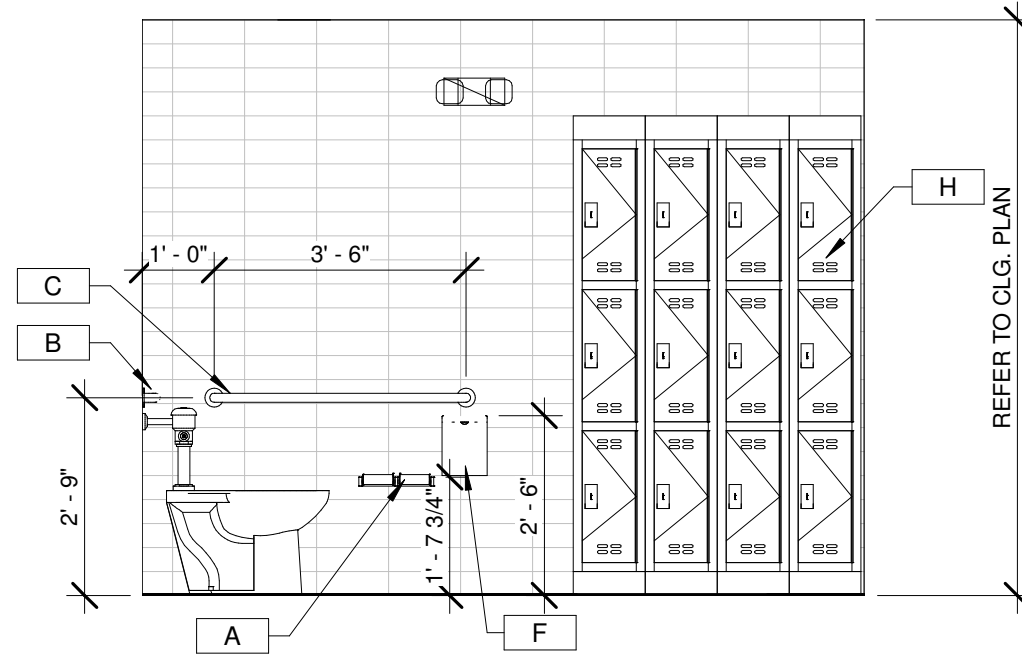
1 Floor Plan
1/8" = 1'-0"



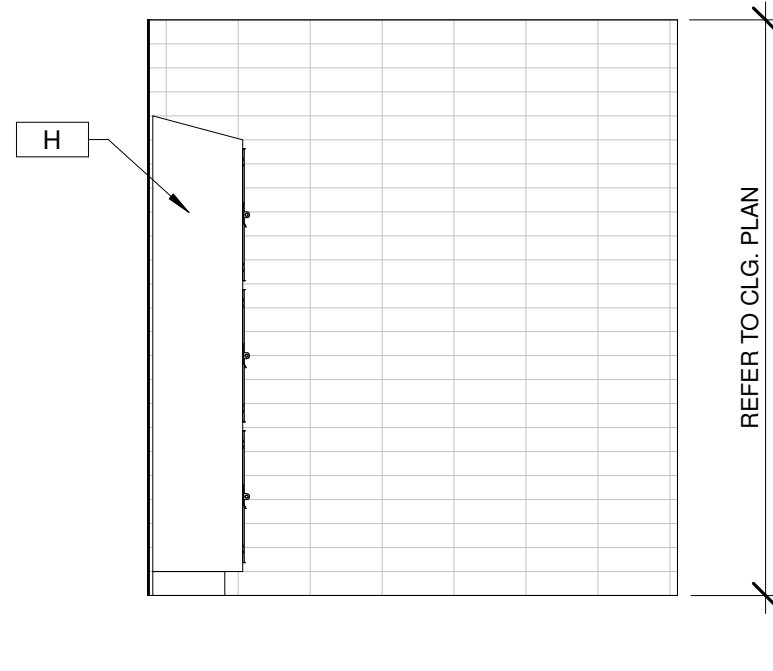
2 Enlarged Restroom Plan
3/8" = 1'-0"



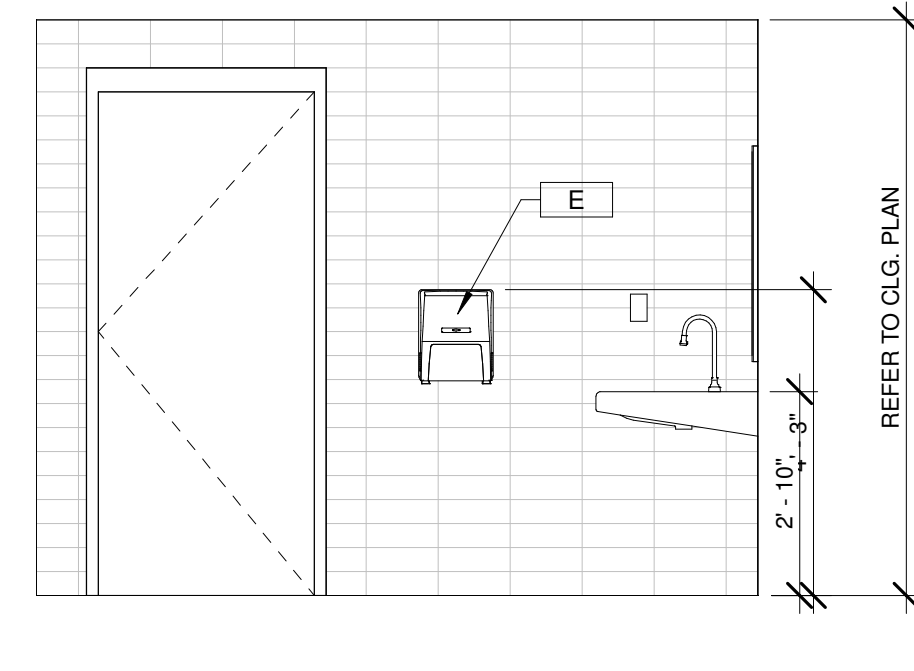
3 Elevation 1 - a
3/8" = 1'-0"



4 Elevation 1 - b
3/8" = 1'-0"



5 Elevation 1 - c
3/8" = 1'-0"



6 Elevation 1 - d
3/8" = 1'-0"

INTERIOR FINISH SCHEDULE						
CODE	MATERIAL	MANUFACTURER	DESCRIPTION		LOCATION	NOTES
			PRODUCT	COLOR		
P-1	PAINT	BENJAMIN MOORE	AURA WATERBORNE INTERIOR ACRYLIC LATEX PAINT	COLOR: BM OC-61 WHITE DIAMOND FINISH: FLAT FOR CEILINGS/SOFFITS FINISH: EGGSHELL FOR WALLS	WALLS: 6'-0" A.F.F. TO ROOF DECK CEILINGS	CONTACT: DOROTHY HAZINSKI P: 866-708-9181 M: 330-353-3850 E: DOROTHY.HAZINSKI@BENJAMINMOORE.COM PREP AND PRIME SURFACES PER MANUFACTURERS RECOMMENDATIONS
P-2	PAINT	BENJAMIN MOORE	AURA WATERBORNE INTERIOR ACRYLIC LATEX PAINT	COLOR: BM 2129-10 MIDNIGHT DREAM FINISH: FLAT FOR SOFFITS FINISH: EGGSHELL FOR WALLS	WALLS: UP TO 6'-0" A.F.F.	CONTACT: DOROTHY HAZINSKI P: 866-708-9181 M: 330-353-3850 E: DOROTHY.HAZINSKI@BENJAMINMOORE.COM PREP AND PRIME SURFACES PER MANUFACTURERS RECOMMENDATIONS
EPOXY-1	EPOXY	FLOROCK	FLUID-APPLIED FLOORING TYPE FAF-4: EPOXY FLOOR, FOLLOWED BY CHEMICAL RESISTANT HIGH WEAR URETHANE 1: PRIMER COAT: TWO-COMPONENT EPOXY. APPLY AT 10-12 MILS. A: PRODUCT: FLOROCK FLOROPROXY 4700 2: OVERLAY: EPOXY AND SAND AGGREGATE MIXTURE TROWELED IN PLACE, APPLIED AT 1/4" THICKNESS. A: PRODUCT: FLOROCK FLOROPROXY 4865 B: COLOR: BLACK 3: GROUT COAT: HIGH-PERFORMANCE EPOXY RESIN. APPLY AT 16 MILS. A: PRODUCT: FLOROCK FLOROPROXY 4865 B: COLOR: BLACK 4: GROUT COAT: HIGH-PERFORMANCE EPOXY RESIN. APPLY AT 16 MILS A: PRODUCT: FLOROCK FLOROPROXY 4805 B: COLOR: BLACK 5: TOPCOAT - URETHANE TOP COAT: FLOROTHAN MC HT A: COLOR: BLACK B: SLIP RESISTANCE AS REQUIRED	COLOR: BLACK FINISH: GLOSS TEXTURE: SAND	SERVICE FLOOR	CONTACT: DOROTHY HAZINSKI P: 866-708-9181 M: 330-353-3850 E: DOROTHY.HAZINSKI@BENJAMINMOORE.COM PREP AND PRIME SURFACES PER MANUFACTURERS RECOMMENDATIONS
T-5	TILE	ROYAL MOSA	WALL TILE 4"W X 12"L	COLLECTION: GLOBAL COLOR: MOUSE GRAY 16880 GROUT COLOR: MAPEI 27 SILVER	TECH RESTROOM	COMPANY: ROYAL MOSA NAME: NAN MCGINNIS P: 513-703-5801 W: WWW.MOSA.COM PREP AND PRIME SURFACES PER MANUFACTURER'S RECOMMENDATIONS. INSTALLED IN HORIZONTAL STACK BOND.

ROOM FINISH SCHEDULE				
Room: Name	Room: Number	Room: Wall Finish	Room: Base Finish	Room: Floor Finish
SERVICE	100	P-1 / P-2		EPOXY-1
PARTS	101	P-1 / P-2		CONC, SEALED
RESTROOM (UNISEX)	102	T-5		EPOXY-1

TOILET ACCESSORIES SCHEDULE	
-	DESCRIPTION
A	TOILET TISSUE DISPENSER, DOUBLE ROLL, SURFACE MOUNTED BOBRICK #B-274
B	GRAB BAR - 36" BOBRICK #B-5806x36
C	GRAB BAR - 42" BOBRICK #B-5806x42
D	MIRROR, TEMPERED BOBRICK #B-2908 2436
E	PAPER TOWEL DISPENSER, SURFACE MOUNTED, ROLL BOBRICK #B-72860
F	SANITARY NAPKIN DISPOSAL, SURFACE MOUNTED BOBRICK #B-270
G	SOAP DISPENSER, SURFACE MOUNTED BOBRICK #B-42
H	LOCKER, 3-TIER, 12"W x 24"H

GENERAL NOTES	
1. ALL INTERIOR FINISHES TO BE A MINIMUM OF CLASS A.	

KEY NOTES

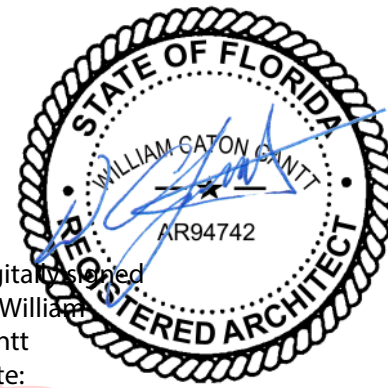
KEYNOTE NON-SEQUENCE NUMBERING IS INTENTIONAL. ONLY KEYNOTES LISTED BELOW ARE UTILIZED FOR THIS DRAWING.

- 103 VERTICAL ROOF LEADER. REFER TO ROOF PLAN.
- 104 ELECTRICAL PANEL. REFER TO ELECTRICAL DRAWINGS.
- 105 HVAC CONDENSER. REFER TO MECHANICAL DRAWINGS.
- 106 CHAIN LINK FENCE AND GATE. REFER TO ELEVATIONS.
- 107 CANOPY COLUMN. PRE-ENGINEERED ALUMINUM. REFER TO STRUCTURAL DRAWINGS.
- 108 STEEL BOLLARD. REFER TO ELEVATIONS.
- 109 LOCKER, 2-TIER
- 110 HI-LO DRINKING FOUNTAIN. REFER TO PLUMBING DRAWINGS.
- 111 WASHFOUNTAIN. REFER TO PLUMBING DRAWINGS.
- 112 EMERGENCY EYEWASH. REFER TO PLUMBING DRAWINGS.
- E01 LIFT, ABOVE GROUND
- E07 FLOOR JACK
- E08 PARTS WASHER
- E09 WORK BENCH
- E10 OVERHEAD CORD REEL
- E11 OIL RECOVERY PUMP
- E12 OIL RECEIVER
- E13 AIR COMPRESSOR
- E14 AIR DRYER
- E15 CONTAINMENT TANK, OIL
- E16 CONTAINMENT TANK, BULK FLUID

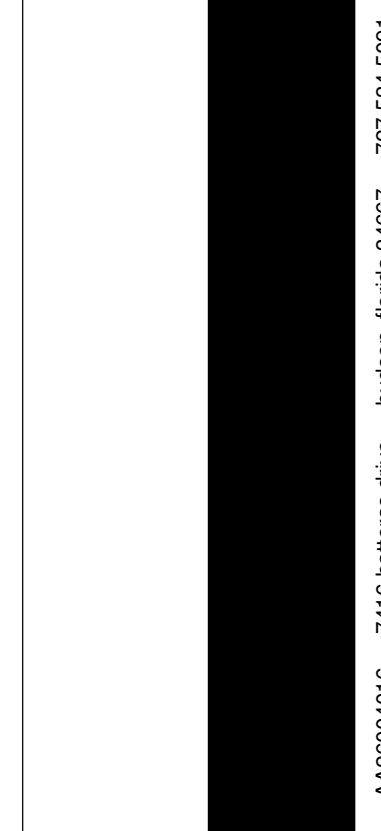
LEGEND

- A WALL TYPE PER DETAILS ON A004
- FIRE EXTINGUISHER. REFER TO LIFE SAFETY PLAN.

PERMIT SUBMITTAL



Digital Seal
by William
Gantt
Date:
2022.10.31
14:26:58 -04'00'



Revisions

Y

Y

Y

Y

Floor Plan &
Interior Elevations

Project number 2022.01
Date January 27, 2022

A100

2528 W. US Highway 90 - Lake City, Florida 32055

1. REFER TO INTERIOR FINISH SCHEDULE FOR CEILING FINISHES.
2. REFER TO MECHANICAL PLANS FOR EQUIPMENT TYPES AND MOUNTING DETAILS.
3. REFER TO ELECTRICAL PLANS FOR LIGHTING FIXTURE SCHEDULE.

KEYNOTE NON-SEQUENCE NUMBERING IS INTENTIONAL. ONLY KEYNOTES LISTED BELOW ARE UTILIZED FOR THIS DRAWING.

CEILING LEGEND

[illegible]

1 Reflected Ceiling Plan
1/8" = 1'-0"

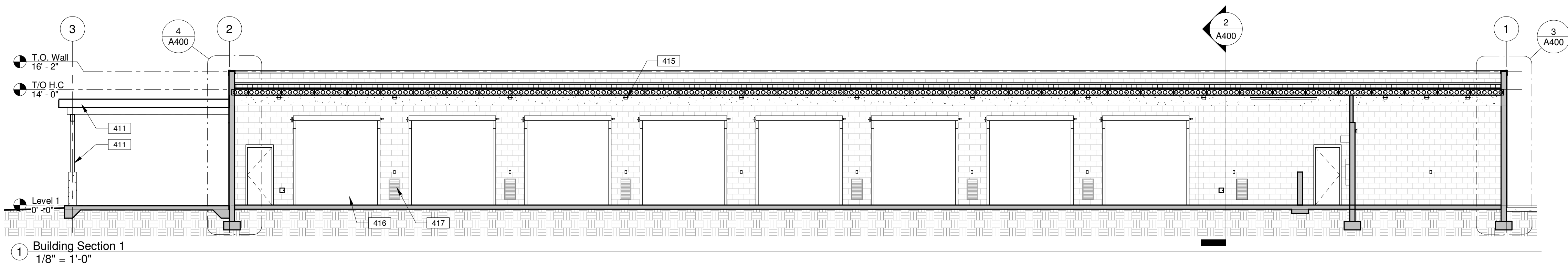
AA50004016 • 7416 hatteras drive • hudson, florida 34687 • 727.534.5091

Revisions

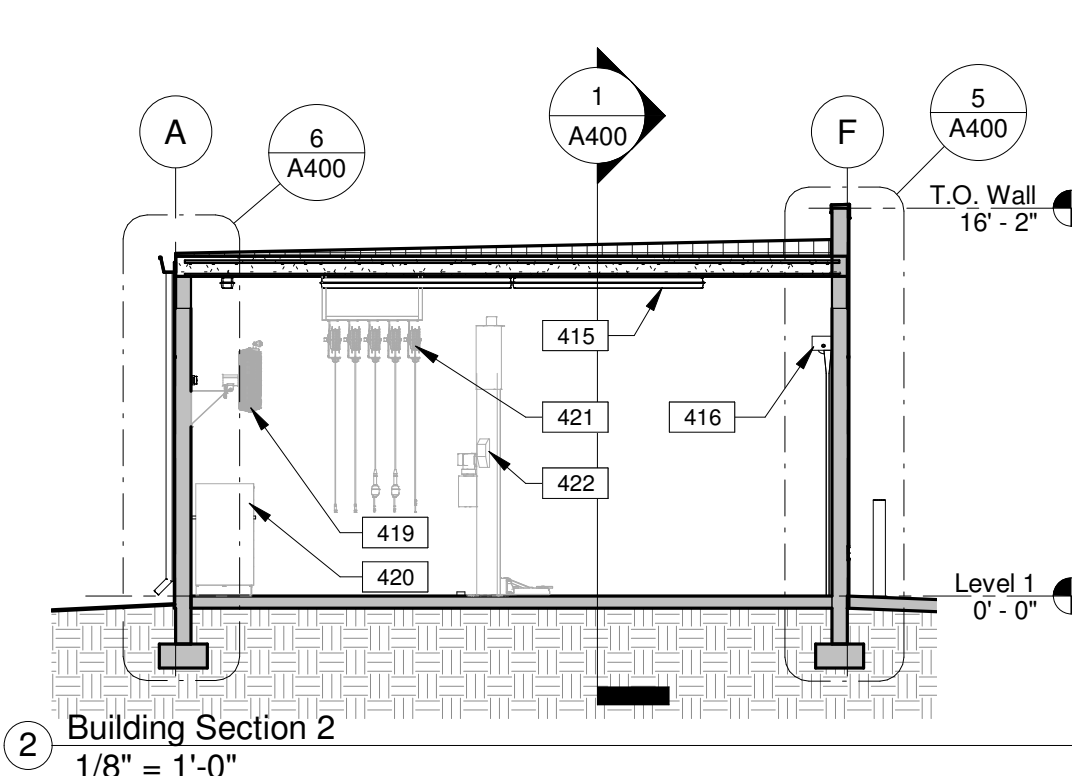
γ	γ	γ
γ	γ	γ

Project number	2022.01
Date	January 27, 2022

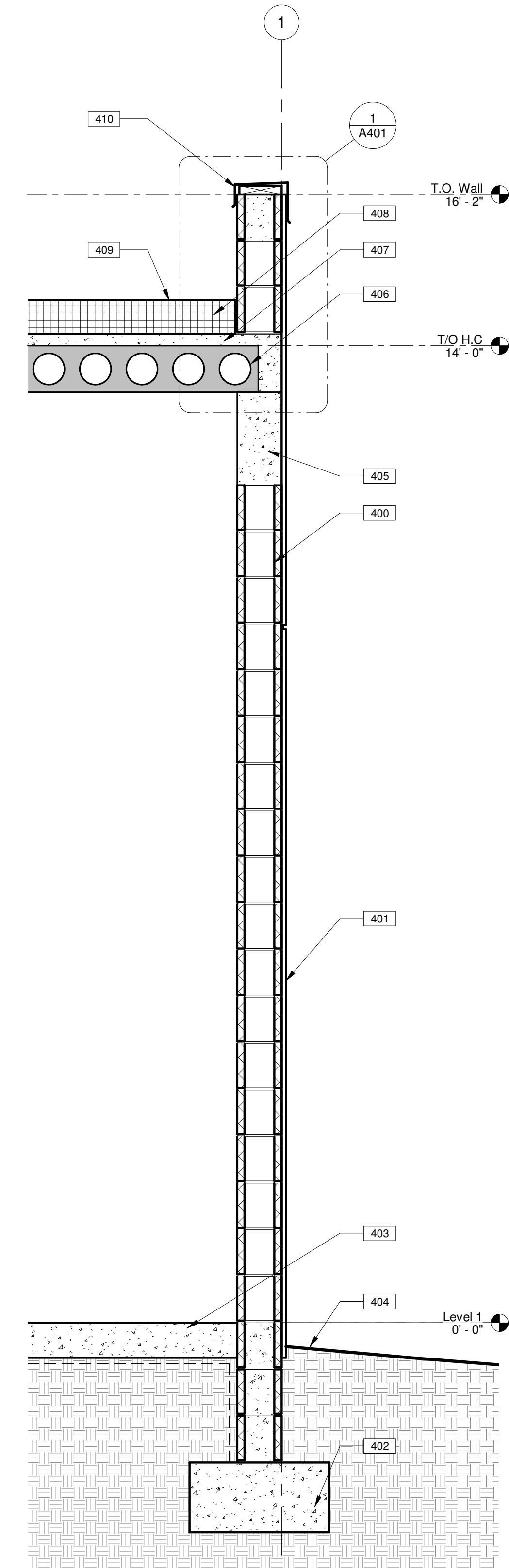
A300



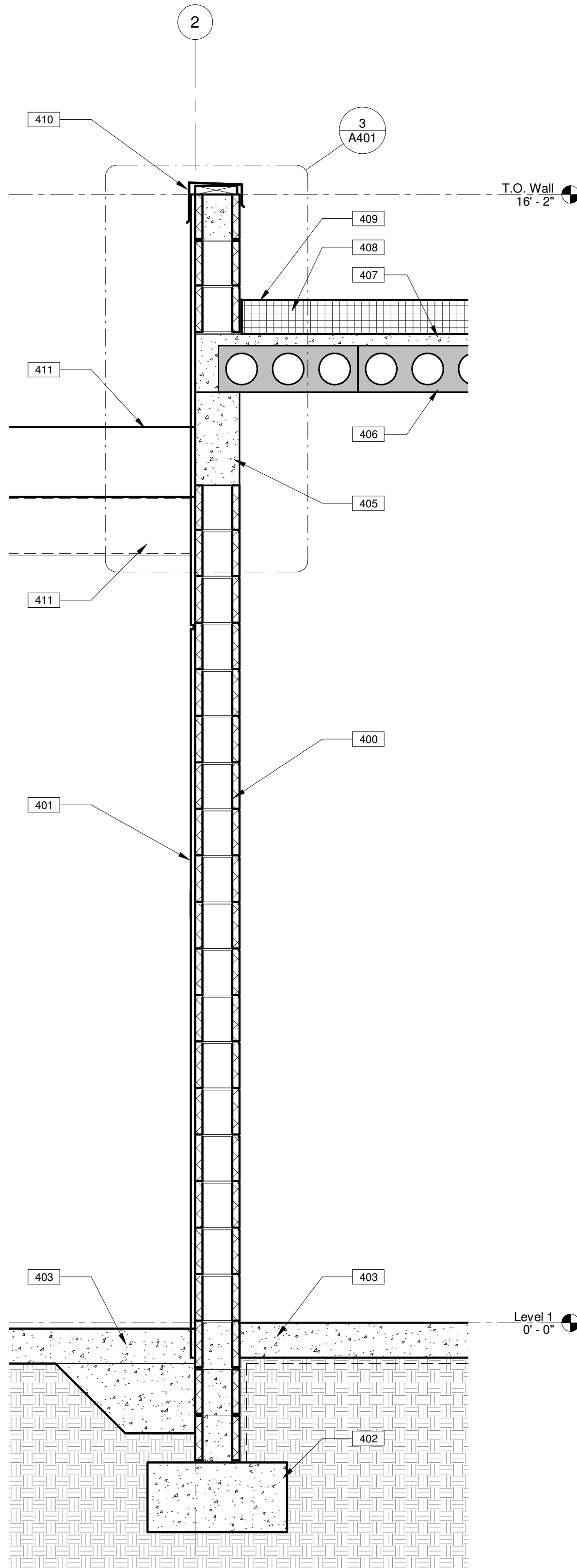
1 Building Section 1
1/8" = 1'-0"



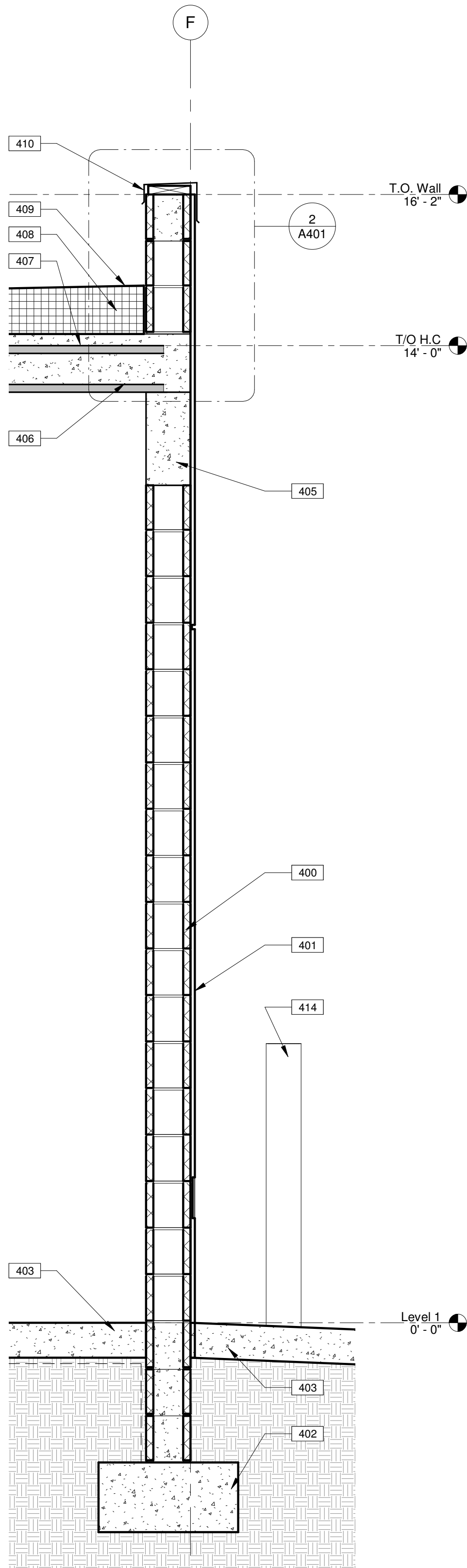
2 Building Section 2
1/8" = 1'-0"



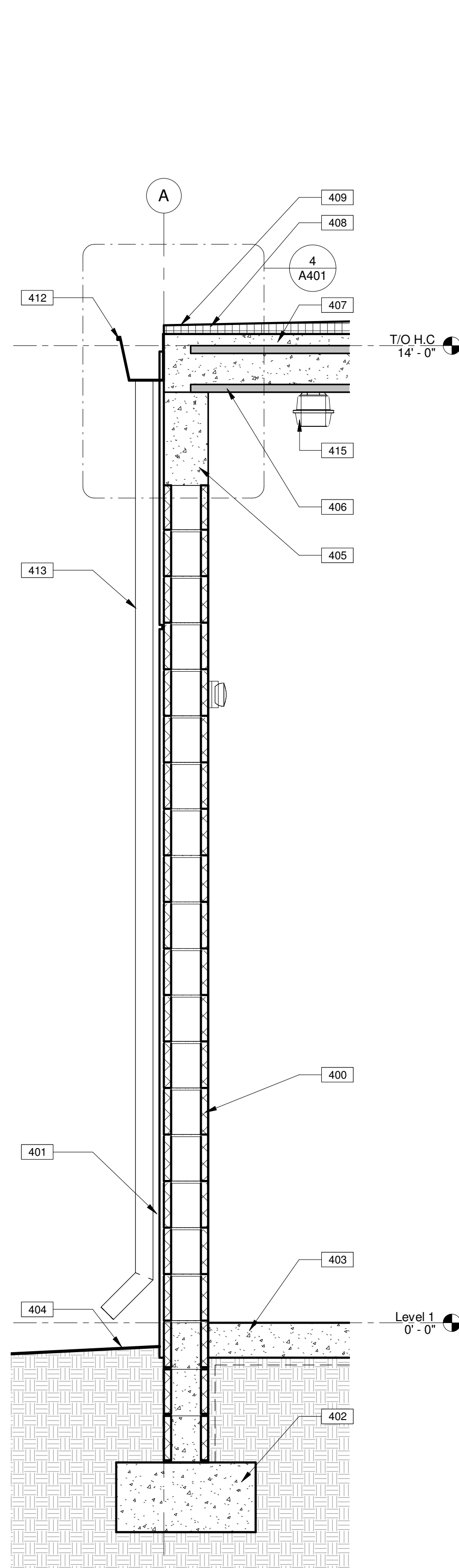
3 Wall Section A
3/4" = 1'-0"



4 Wall Section B
3/4" = 1'-0"



5 Wall Section C
3/4" = 1'-0"



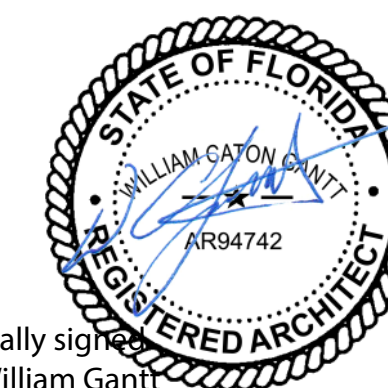
6 Wall Section D
3/4" = 1'-0"

KEY NOTES

KEYNOTE NON-SEQUENCE NUMBERING IS INTENTIONAL. ONLY KEYNOTES LISTED BELOW ARE UTILIZED FOR THIS DRAWING.

- 400 CMU WALL. REFER TO STRUCTURAL DRAWINGS AND WALL TYPES.
- 401 STUCCO FINISH, 3-COAT SYSTEM. SEE ELEVATIONS FOR REVEAL LAYOUT. PAINT PER ELEVATIONS.
- 402 CONCRETE FOUNDATION PER STRUCTURAL DRAWINGS.
- 403 CONCRETE SLAB ON GRADE OVER VAPOR BARRIER. TURN VAPOR BARRIER DOWN TO TOP OF FOUNDATION. REFER TO STRUCTURAL DRAWINGS.
- 404 GRADE. REFER TO CIVIL DRAWINGS.
- 405 CONCRETE CIP BEAM. REFER TO STRUCTURAL DRAWINGS.
- 406 CONCRETE HOLLOW CORE PLANK. REFER TO STRUCTURAL DRAWINGS.
- 407 COMPOSITE CONCRETE TOPPING SLAB. REFER TO STRUCTURAL DRAWINGS.
- 408 ROOF POLYISO INSULATION, TAPERED. REFER TO ROOFING PLAN.
- 409 SINGLE PLY ROOFING MEMBRANE. REFER TO ROOF PLAN.
- 410 PARAPET COPING, PRE-FINISHED ALUM. REFER TO ELEVATIONS.
- 411 PRE-ENGINEERED ALUMINUM CANOPY SYSTEM. REFER TO ELEVATIONS.
- 412 PRE-FINISHED ALUMINUM GUTTER. REFER TO ELEVATIONS.
- 413 PRE-FINISHED ALUMINUM DOWNSPOUT. REFER TO ELEVATIONS. DISCHARGE TO SPLASH BLOCK AT GRADE.
- 414 CONCRETE FILLED STEEL BOLLARD. REFER TO STRUCTURAL DRAWINGS.
- 415 LIGHTING FIXTURE. REFER TO RCP FOR LAYOUT AND SPEC.
- 416 OVERHEAD DOOR, COILING. REFER TO DOOR SCHEDULE.
- 417 WALL LOUVER. REFER TO EXTERIOR ELEVATIONS AND MECHANICAL DRAWINGS.
- 419 WALL MOUNTED FAN BY EQUIPMENT SUPPLIER.
- 420 BENCH BY EQUIPMENT SUPPLIER.
- 421 CEILING MOUNTED HOSE REELS BY EQUIPMENT SUPPLIER.
- 422 VEHICLE LIFT BY EQUIPMENT SUPPLIER.

PERMIT SUBMITTAL



William Gantt
Digitally signed by William Gantt
Date: 2022.10.31 14:28:12 -04'00'

A40004016 • 7416 hatteras drive • Hudson, Florida 34687 • 727.534.5091

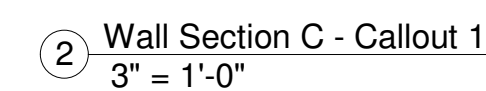
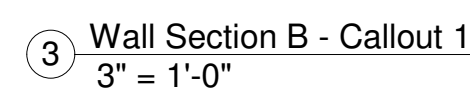
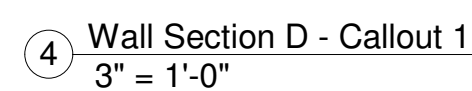
Revisions

2528 W. US Highway 90 - Lake City, Florida 32055

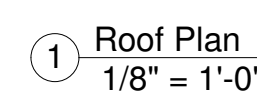
Building & Wall
Sections

Project number 2022.01
Date January 27, 2022

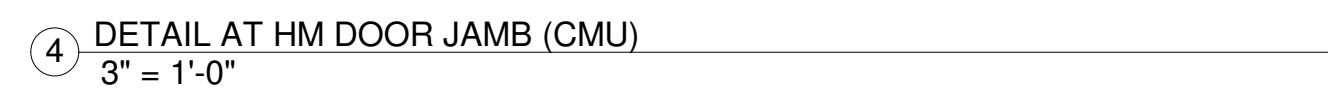
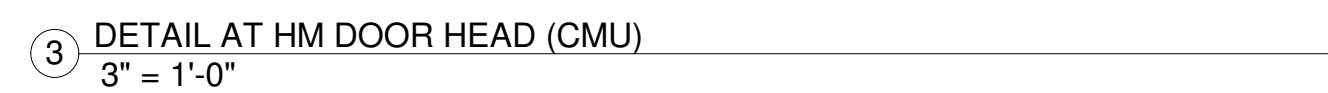
A400



A401



A500



Willia
Gantt

1. HOLLOW METAL DOOR FRAME PAINT SHALL BE SEMI-GLOSS FINISH.
2. ALL DOOR HANDLES SHALL BE LEVER TYPE IN CONFORMANCE W/ ANSI 117.1, LATEST EDITION, UNLESS OTHERWISE NOTED.
3. PROVIDE DOOR STOP FOR ALL DOORS U.O.N. PROVIDE WALL TYPE STOP (TYP.) EQUAL TO IVES WS401CVX. AT CONDITIONS WHERE A WALL DOESNT EXIST, PROVIDE FLOOR MOUNTED EQUAL TO IVES FS13.
4. PROVIDE CLOSERS ON ALL EXTERIOR AND RESTROOM DOORS.
5. ALL SWINGING DOORS TO HAVE SILENCERS.
6. ALL EXTERIOR DOORS TO BE INSULATED.
7. OVERHEAD COILING DOORS:
 - A. "OVERHEAD DOOR COMPANY" #825 OR EQUAL
 - B. NON-MOTORIZED, CHAIN HOIST OPERATION
 - C. GALVANIZED STEEL BOTTOM BAR AND GUIDES
 - D. WEATHER SEALS
 - E. CYLINDER LOCK SLIDE BOLT
 - F. HIGH USE PACKAGE
 - G. EXHAUST PORT, COORDINATE PLACEMENT AND HOLE SIZE WITH EXHAUST PORT MANUFACTURER PRIOR TO DOOR ORDER.
 - H. PREFINISHED, 30 ULS W/ INSULATED, 24 GAUGE GALVANIZED STEEL DOOR. POWDER COATED, COLOR TO BE SELECTED BY ARCHITECT.
 - I. FRAME & HARDWARE BY OVERHEAD DOOR SUPPLIER.

HARDWARE SET 01 (DOORS: 100A, 100K)				
QTY	DESCRIPTION	CATALOG NUMBER	FINISH	MFR
3 EA	HINGE	5BB1 4.5 X 4.5	652	IVE
1 EA	CLASSROOM LOCK	K561PD	626	FAL
1	CYLINDER	AS REQ'D	626	FAL
1	CLOSER	DC8210 A4	689	CR
1 EA	PROTECTION PLATE	8400 12" X 34" LDW B-CS	630	IVE
3 EA	SILENCER	SR64	GRY	IVE
1	THRESHOLD	65 (ADA)	A	ZERO
1	WEATHERSTRIPPING	188S	GRY	ZERO
HARDWARE SET 02 (DOORS: 101)				
QTY	DESCRIPTION	CATALOG NUMBER	FINISH	MFR
4 EA	HINGE	5BB1 4.5 X 4.5	652	IVE
1 EA	STOREROOM LOCK	K581PD	626	FAL
1	CYLINDER	AS REQ'D	626	FAL
1 EA	PROTECTION PLATE	8400 30" X 40" LDW B-CS	630	IVE
3 EA	SILENCER	SR64	GRY	IVE
HARDWARE SET 03 (DOORS: 102)				
QTY	DESCRIPTION	CATALOG NUMBER	FINISH	MFR
3 EA	HINGE	5BB1 4.5 X 4.5	652	IVE
1 EA	PRIVACY LOCK	K301PD	626	FAL
1	CYLINDER	AS REQ'D	626	FAL
1	CLOSER	DC8210 A4	689	CR
1 EA	PROTECTION PLATE	8400 12" X 34" LDW B-CS	630	IVE
3 EA	SILENCER	SR64	GRY	IVE
1	THRESHOLD	65 (ADA)	A	ZERO
1	WEATHERSTRIPPING	188S	GRY	ZERO

