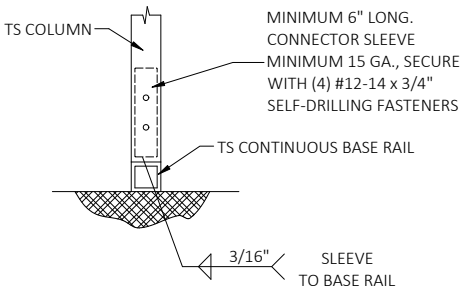
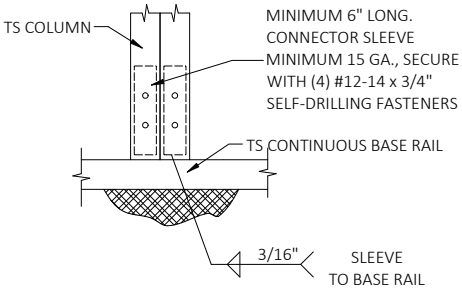


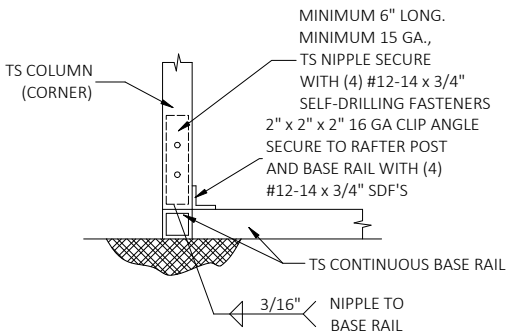
2 END POST/RAFTER
CONNECTION DETAIL
SCALE: NTS



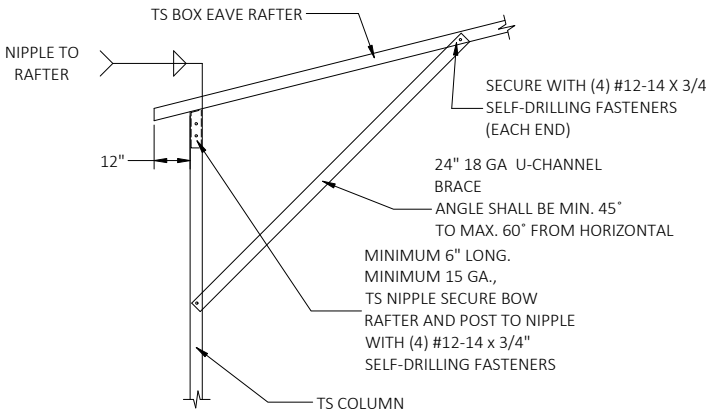
3A RAFTER POST/BASE RAIL
CONNECTION DETAIL
SCALE: NTS



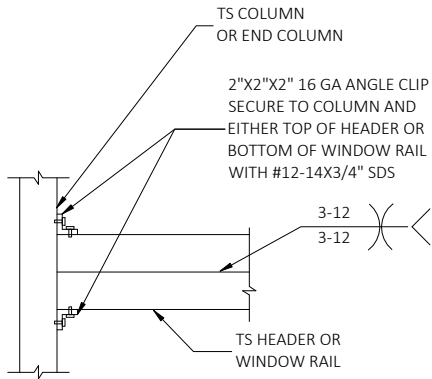
3B RAFTER POST/BASE RAIL
CONNECTION DETAIL
SCALE: NTS



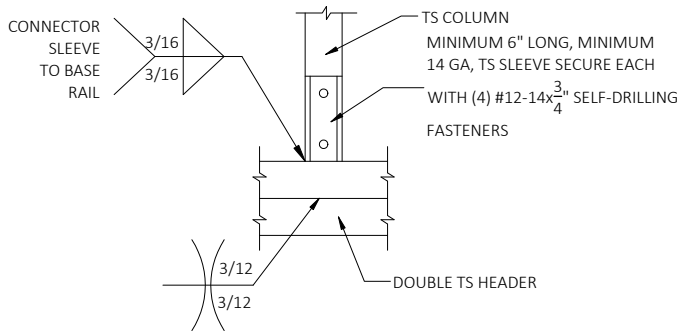
4 END POST/BASE RAIL
CONNECTION DETAIL
SCALE: NTS



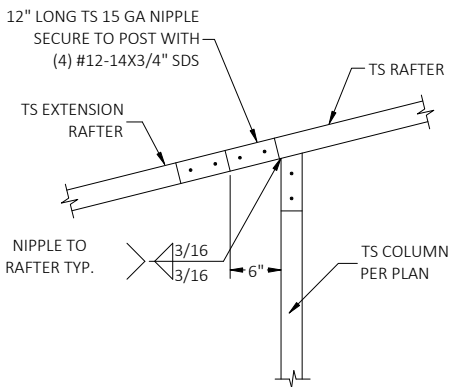
5 BOX EAVE RAFTER/CORNER POST
CONNECTION DETAIL
SCALE: NTS



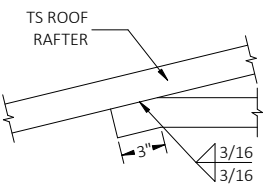
6 DOUBLE HEADER TO COLUMN
CONNECTION DETAIL
SCALE: NTS



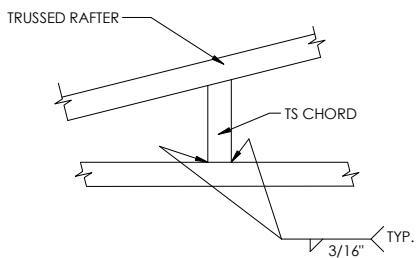
7 COLUMN/DOUBLE HEADER
CONNECTION DETAIL
SCALE: NTS



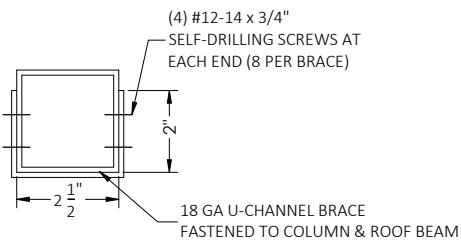
8 LEAN TO RAFTER/COLUMN CONNECTION
SCALE: NTS



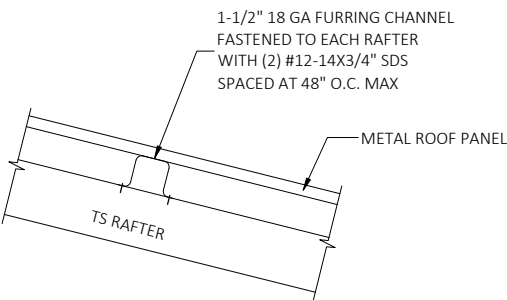
9 COLLAR-TIE CONNECTION
SCALE: NTS



10 CHORD/RAFTER
CONNECTION DETAIL
SCALE: NTS

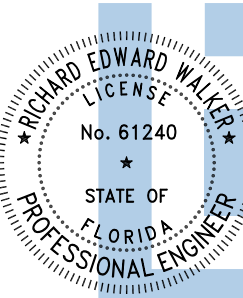


11 BRACE SECTION
SCALE: NTS



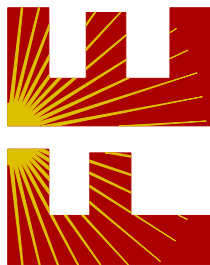
12 PANEL ATTACHMENT
(ALTERNATE FOR VERTICAL ROOF PANELS)
SCALE: NTS

This item has been digitally signed and sealed by Richard E. Walker, P.E. on the date adjacent to the seal. Printed copies of this document are not considered signed and sealed and the signature must be verified on any electronic copies.



Digitally signed
by Richard E
Walker
Date:
2025.01.02
14:19:58-05'00'

FLORIDA ENGINEERING LLC
4161 TAMiami TRAIL, UNIT 101
PORT CHARLOTTE, FLORIDA 33952
(941) 391-5980
FLEng.com



Orders@FLEng.com

CA CERT. #30782

PROJECT NO. 2434511

CONTRACTOR:
TUBULAR BUILDING SYSTEMS
P.O. BOX. 2254
LAKE CITY, FL 32056

PROJECT ADDRESS:
GIANOULIS
1088 SW UTAH ST
FORT WHITE, FL 32038

DESIGN DATE: 12/18/2024

REVISION 1: DATE

REVISION 2: DATE

DRAWN BY: TCP

SCALE: NTS

SHEET:

04