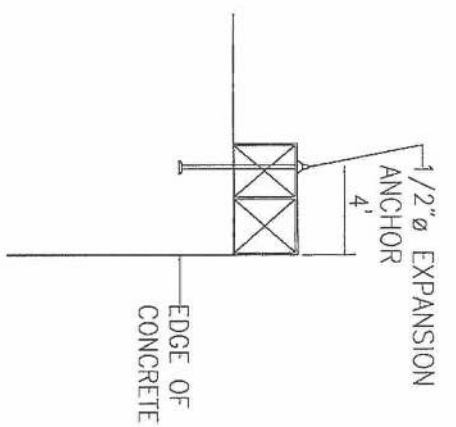
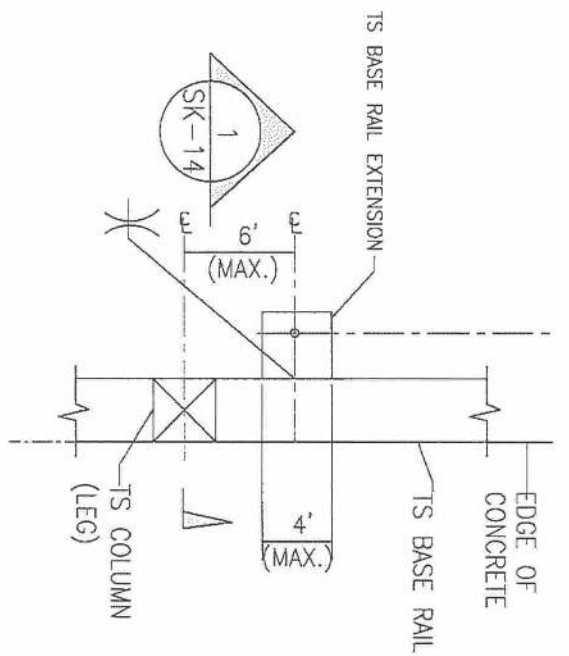


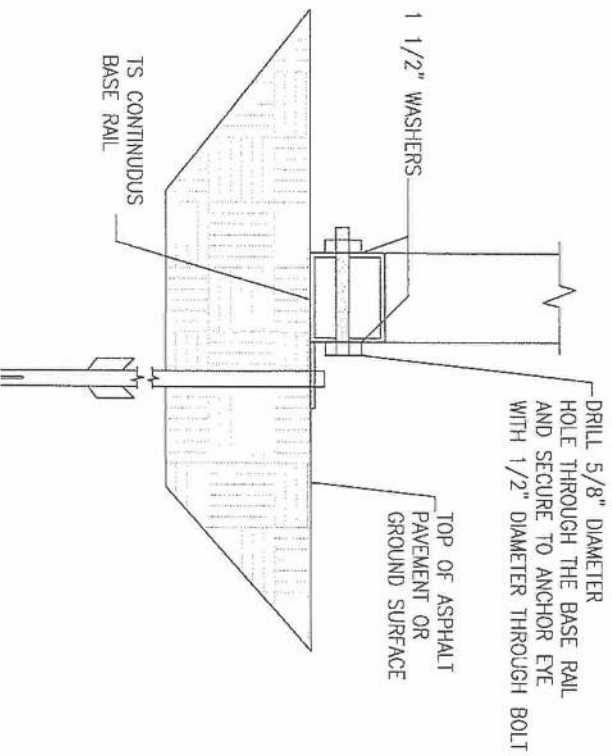
HEADER DETAIL FOR DOOR
 OPENINGS 12'-0" < LENGTH < 20'-0"
 SCALE 1/8" = 1'-0"

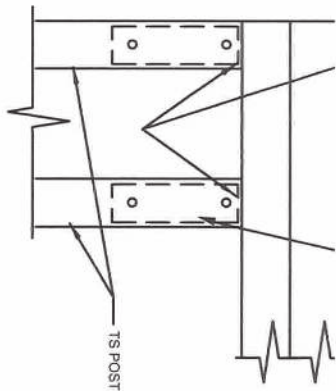




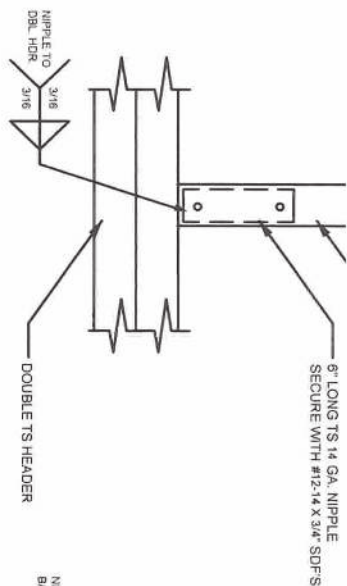
TYPICAL ANCHOR DETAIL WHEN
BASE RAIL IS NEAR EDGE OF CONCRETE

SCALE: N.T.S.

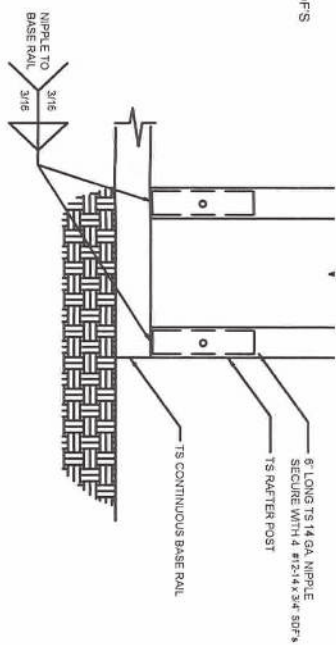




1 RAFTER POST/DBL. HEADER DETAIL
SCALE: NTS

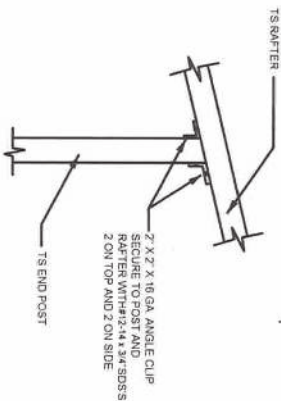


2 RAFTER POST/BASE
BASE RAIL CONNECTION DETAIL
SCALE: NTS

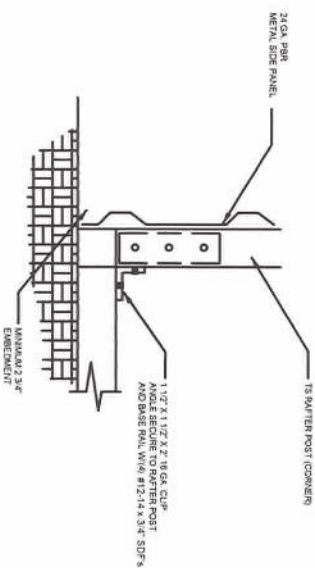


3 RAFTER POST/BASE
BASE RAIL CONNECTION DETAIL
SCALE: NTS

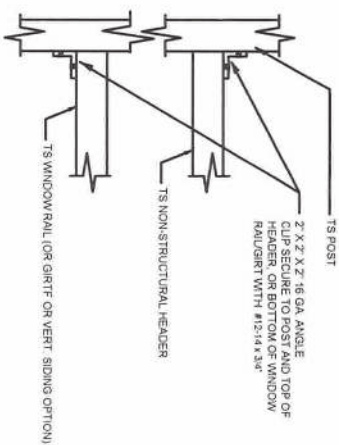
TS TRUSS
OR NON-
STR. END P
WINDOW
TS BASE/
NON-STR



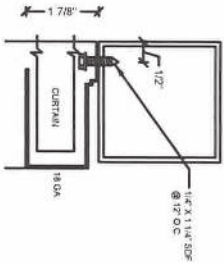
5 END POST/RAFTER CONN. DETAIL
SCALE: NTS



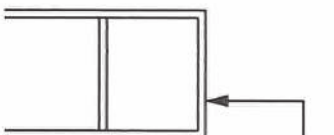
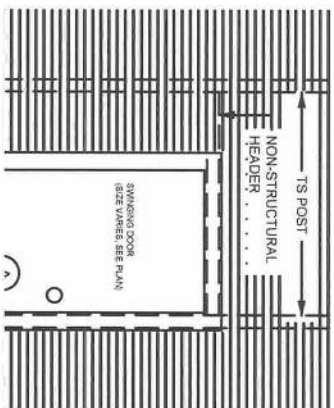
6 END POST/BASE RAIL CONN.
SCALE: NTS



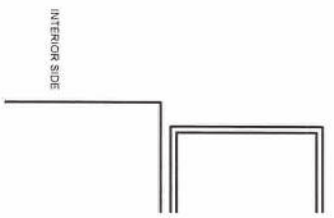
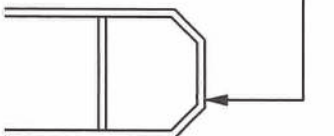
7 NON-STRUCTURAL HEADER WINDOW
RAIL, OR GIRT TO POST CONN. DETAIL
SCALE: NTS

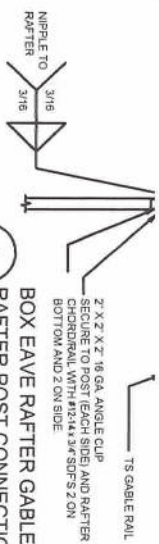


8

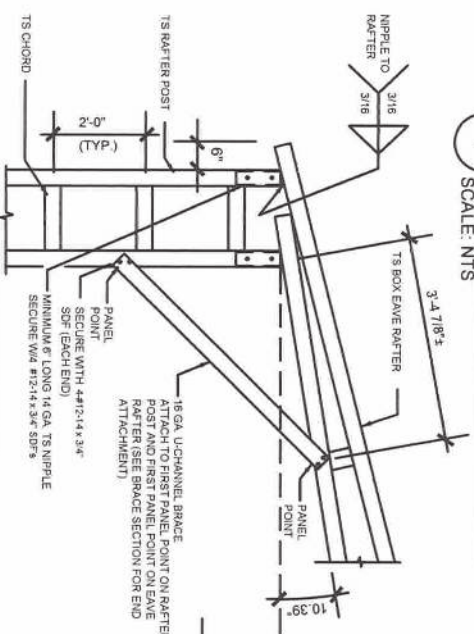


TUBING OPTIONS:
2 1/4 X 2 1/4
2 1/2 X 2 1/2
2 X 3

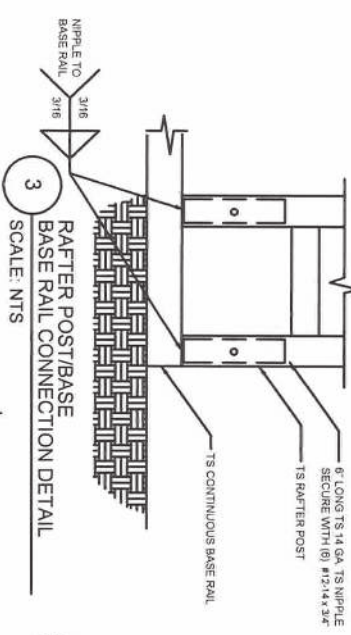




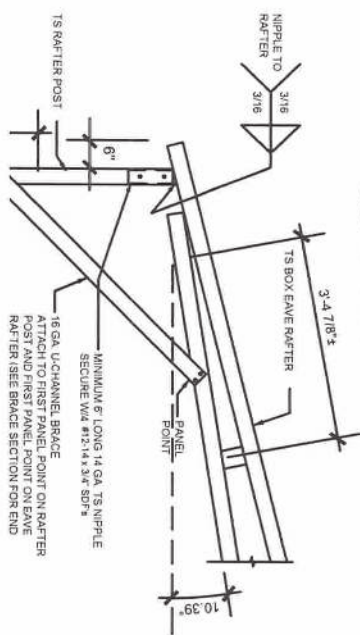
1
BOX EAVE RAFTER GABLE RAIL TO
RAFTER POST CONNECTION DETAIL
SCALE: NTS



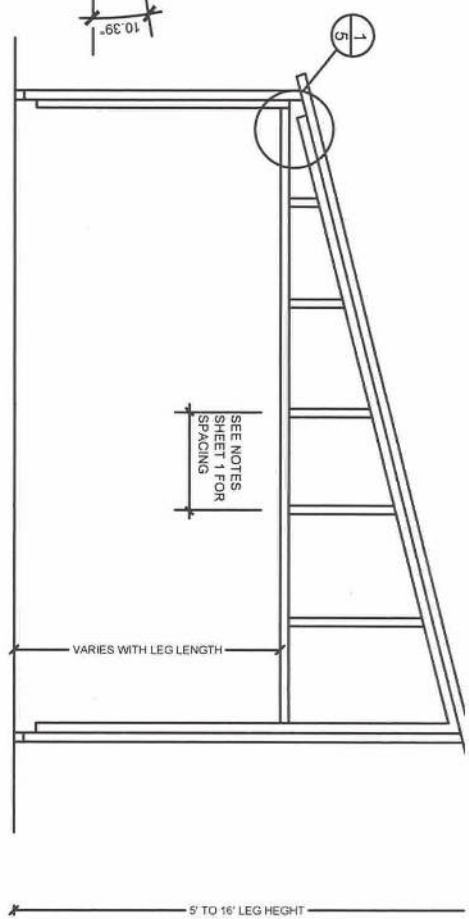
2
BOX EAVE RAFTER/CORNER
POST CONNECTION DETAIL
SCALE: NTS



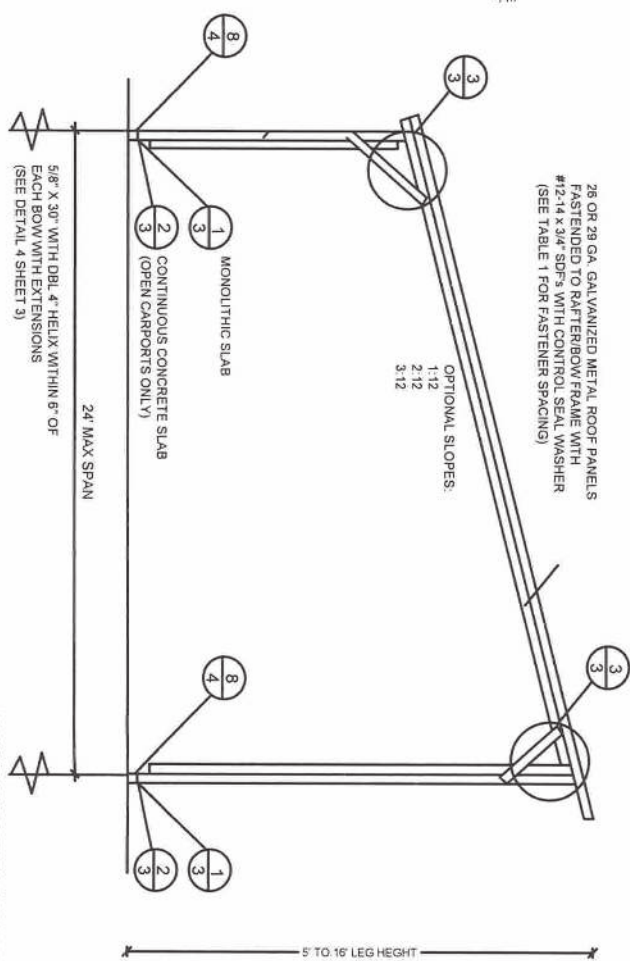
3
RAFTER POST/BASE
BASE RAIL CONNECTION DETAIL
SCALE: NTS



4
TYPICAL FREE STANDING LEAN-TO
SCALE: NTS



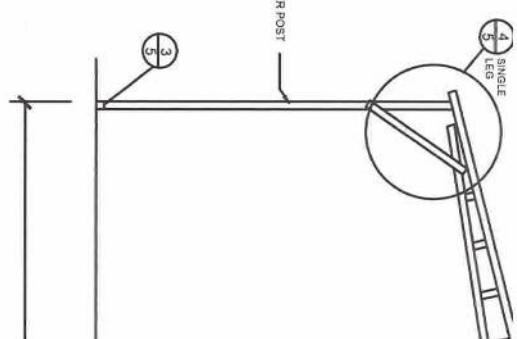
5
TYPICAL BOX EAVE RAFTER
GABLE END FRAMING SECTION
NOT TO SCALE



6
TYPICAL FREE STANDING LEAN-TO
NOT TO SCALE



7
TYPICAL RAFTER
SLAB CONSTRUCTION
NOT TO SCALE



8
TYPICAL RA
SLAB CONSTRUCTION
NOT TO SCALE



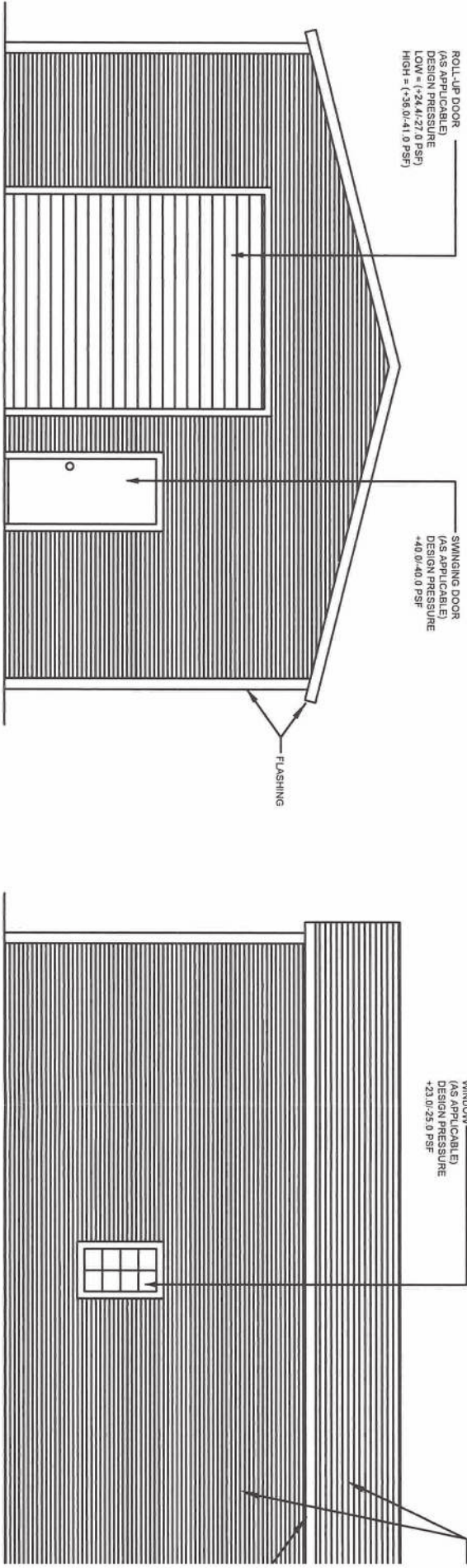
RISK CATEGORY	WIND EXPOSURE CATEGORY	ULTIMATE WIND SPEED (MPH)	NOMINAL WIND SPEED (MPH)	MAXIMUM RAFTER/BOW AND END POST SPACING (FEET)	AVERAGE FASTENER SPACING ON-CENTERS ALONG RAFTERS OR PURLINS, AND POSTS OR GIRTS (INCHES)	
					INTERIOR BOWS/RAFTERS	END BOWS/RAFTERS
I, II, III, or IV	B, C, or D	115 TO 150	89 TO 116	5.0	6	6
		151 TO 180	117 TO 139	4.0	6	6

- NOTES:
1. SPECIFICATIONS APPLICABLE TO 26 OR 29 GAUGE METAL PANELS FASTENED DIRECTLY TO 12.14 OR 15 GAUGE STEEL TUBE BOW FRAMES.
 2. FASTENERS CONSIST OF #12-14x3.4" SELF-DRILLING SCREWS WITH CONTROL SEAL WASHER.
 3. SPECIFICATIONS APPLICABLE ONLY FOR MEAN ROOF HEIGHT OF 20 FEET OR LESS, AND ROOF SLOPES OF 14°(3:12 PITCH). SPACING REQUIREMENTS FOR OTHER ROOF HEIGHTS AND/OR SLOPES MAY VARY.
 4. GROUND ANCHOR REQUIREMENTS ARE 1 @ EACH CORNER AND ONE EVERY OTHER INTERIOR BOW/RAFTER POST LOCATION, AT MAXIMUM OF 10' O.C., AND BOTH SIDES OF OPENINGS WHERE BASE RAIL IS ABSENT.
 5. GROUND ANCHORS ARE NOT REQUIRED WITH CONCRETE SLAB CONSTRUCTION.

IDENTIFYING THE MANUFACTURER'S PRODUCT EVALUATION ENGINEERING FOLLOWING SPECIFICATION ANSIA/MANWMA 107/15 THE CONSTRUCTION SHALL METHODS FOR STRUCTURAL DOORS BY UNIFORM STATI DESIGN WAS DONE IN ACCI SUPPLEMENT AMENDMENT

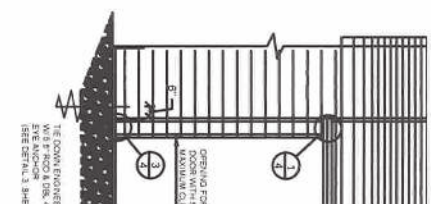
GENERAL NOTE

1. ALL STEEL SHALL BE
2. FASTEN METAL ROOF X 3/4" SELF DRILLING O.C. AVERAGE.
3. ALL FIELD CONNECTI SCREWS
4. ALL SHOP CONNECTI
5. CONCRETE EXPANSI MODEL AT 1252 OR EQUIVALENT (GROU CORNER & ONE EYE AT A MAXIMUM 10'-0" WHERE BASE RAIL IS FOR CONCRETE FOC
6. POST/RAFTER BRACI CONNECTION, EXCE

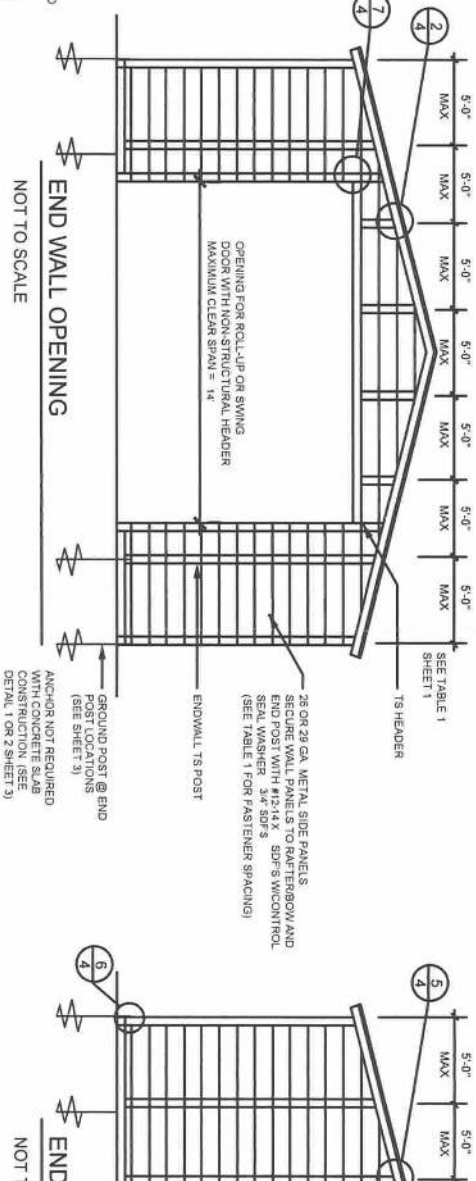


30' MAXIMUM RAFTER SPAN

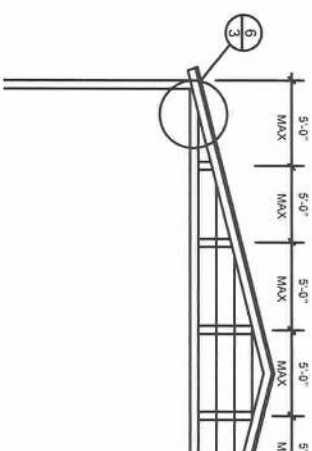
LENGTH VARIES DEPENDING ON NUMBER AND SPACING OF RAFTERS



SIDE ELEVATION
NOT TO SCALE



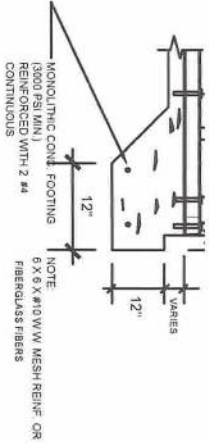
END WALL OPENING
NOT TO SCALE



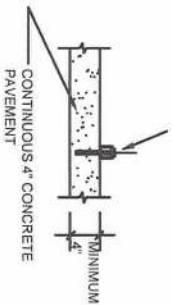
25 OR 29 GA. METAL ROOF PANELS
FASTENED TO BOW FRAME WITH 1/4" X 3/4" SDFS
WITH CONTROL SEAL WASHER.
(SEE TABLE 1 FOR FASTENER SPACING)

12,14,15 GA. FRAMING IS 2" X 3" TUBE STEEL (TS)
12,14,15 GA. FRAMING IS 2-1/2" X 2-1/2" TUBE STEEL (TS)
12,14,15 GA. FRAMING IS 2-1/4" X 2-1/4" TUBE STEEL (TS)
NIPPLES ARE 2-1/4" X 2-1/4" 12,14,15 GA. (TS)

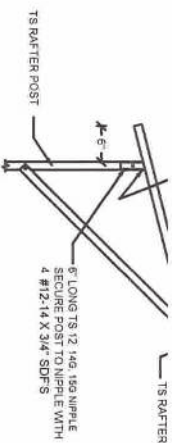
FOR 14 GA. FRAMING
NIPPLES ARE 2" X 2" 12, 14, 15 GA. (TS) FOR 12 GA. FRAMING
NIPPLES ARE 1-3/4" X 2-3/4" 12, 14, 15 GA.
(TS) FOR 15 GA. FRAMING



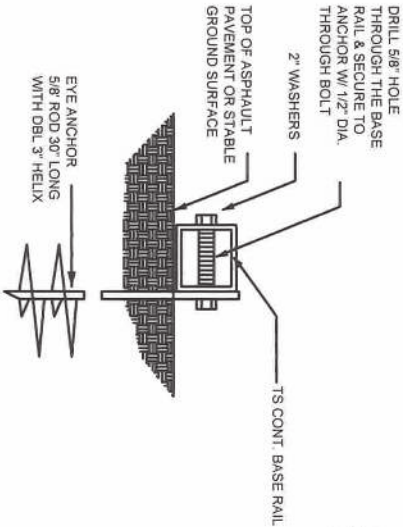
1 CONCRETE BASE RAIL ANCHORAGE
SCALE: NTS (OPTIONAL)



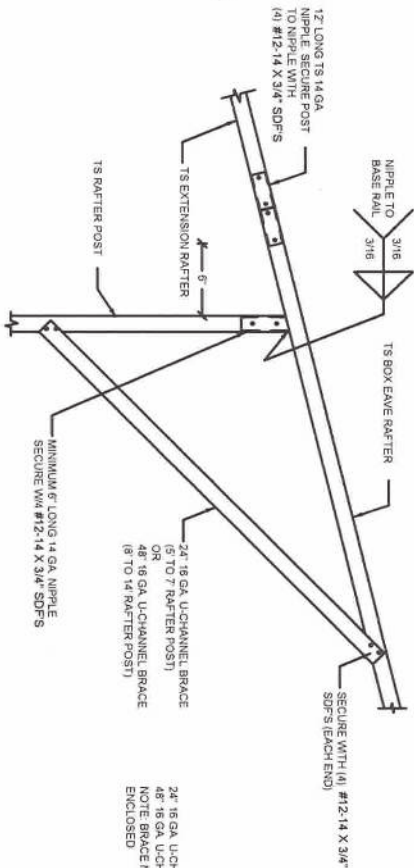
2 CONCRETE BASE RAIL ANCHORAGE
SCALE: NTS (OPTIONAL - OPEN CARPORT ONLY)



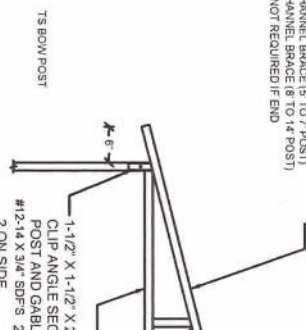
3 BOX EAVE RAFTER/CORNER POST DETAIL
SCALE: NTS



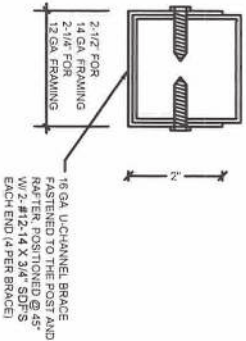
4 BASE RAIL ANCHORAGE
SCALE: NTS



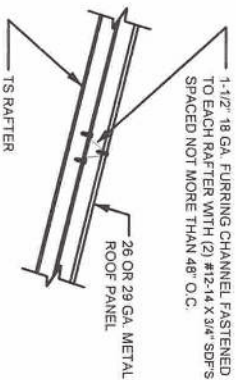
5 SIDE EXTENSION RAFTER/CORNER POST DETAIL
SCALE: NTS



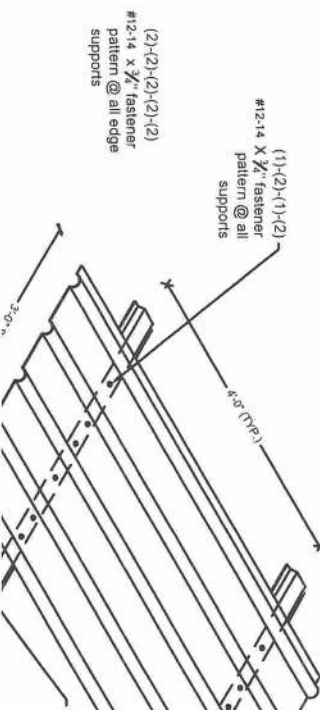
6 GABLE RAIL TO RAFTER POST CONNECTION DETAIL
SCALE: NTS

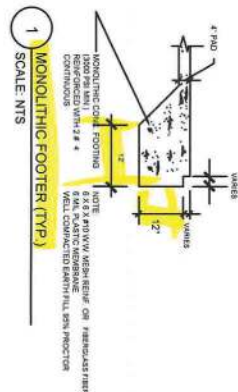
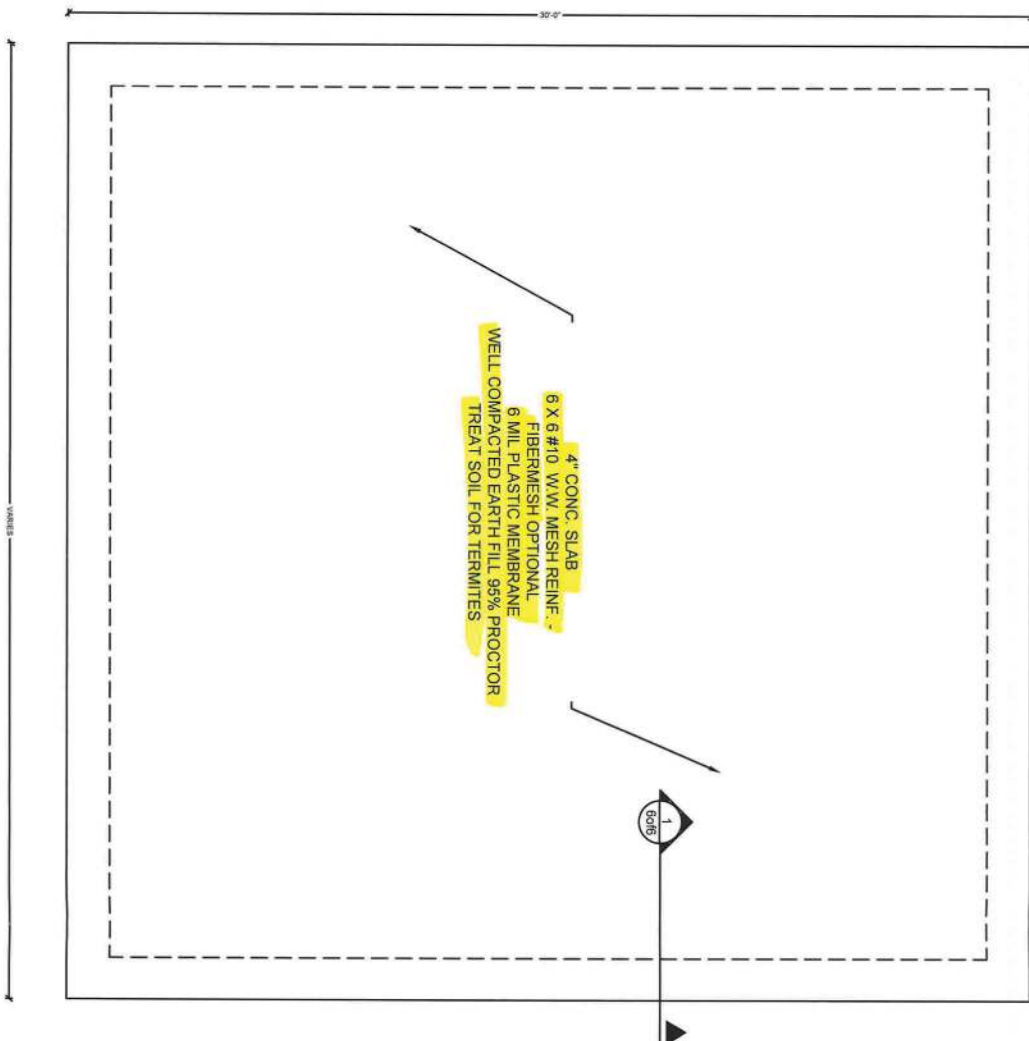


BRACE SECTION
SCALE: NTS



ROOF PANEL ATTACHMENT
ALTERNATE FOR VERTICAL ROOF PANELS
SCALE: NTS





CONCRETE SHALL HAVE A MINIMUM COMPRESSIVE STRENGTH OF 3000 PSI AT 28 DAYS.

COVER OVER REINFORCING STEEL.

FOR FOUNDATIONS, MINIMUM CONCRETE COVER OVER REINFORCING BARS SHALL BE: 3 INCHES IN FOUNDATIONS WHERE THE CONCRETE IS CAST AGAINST AND PREMANENTLY IN CONTACT WITH EARTH OR EXPOSED TO THE EARTH OR WEATHER AND 1 1/2\"/>

A MINIMUM CLEAR DISTANCE OF 1/4\"/>

1. ALL REINFORCEMENT IS BENT COLD.

2. THE DIAMETER OF THE BEND, MEASURED ON THE INSIDE OF THE BAR, IS NOT LESS THAN 8-BAR DIAMETERS AND

3. REINFORCEMENT PARTIALLY EMBEDDED IN CONCRETE SHALL NOT BE FIELD BENT.

EXCEPTION: WHERE BENDING IS NECESSARY TO ALIGN BARS WITH A VERTICAL CELL, BARS PARTIALLY EMBEDDED IN CONCRETE SHALL BE PERMITTED TO BE BENT AT A SLOPE NOT MORE THAN 1\"/>

THE REINFORCING STEEL SHALL BE MINIMUM GRADE 40.

GALVANIZATION:

METAL ACCESSORIES FOR USE IN EXTERIOR WALL CONSTRUCTION NOT DIRECTLY EXPOSED TO THE WEATHER SHALL BE GALVANIZED IN ACCORDANCE WITH ASTM A 153, CLASS B-2. METAL PLATE CONNECTORS, SCREWS, BOLTS AND NAILS EXPOSED DIRECTLY TO THE WEATHER SHALL BE IN STAINLESS STEEL OR HOT DIPPE GALVANIZED.

REINFORCEMENT MAY BE BENT IN THE SHOP OR THE FIELD PROVIDED:

1. ALL REINFORCEMENT IS BENT COLD

2. THE DIAMETER OF THE BEND, MEASURED ON THE INSIDE OF THE BAR, IS NOT LESS THAN 8-BAR DIAMETERS AND

3. REINFORCEMENT PARTIALLY EMBEDDED IN CONCRETE SHALL NOT BE FIELD BENT.

EXCEPTION: WHERE BENDING IS NECESSARY TO ALIGN BARS WITH A VERTICAL CELL, BARS PARTIALLY EMBEDDED IN CONCRETE SHALL BE PERMITTED TO BE BENT AT A SLOPE NOT MORE THAN 1\"/>



THE FOLLOWING IS COMPLIANT TO THE FLORIDA BUILDING CODE 2000, 7TH EDITION AND ASCE 7-16 FOR WIND LOADS OF 180 MPH.

CONCRETE

ELITE METAL MANUFACTURING, LLC
10121 88TH TRACE
LIVE OAK, FL 32060

Revisions:	No.	Date	Description
1	1	08-18-21	Issue
2	2		
3	3		
4	4		
5	5		

Job # 2173
Drawn By: S.K.
Checked By: R.G.

DR. RAM A. GOEL, PH.D., P.E.
F.P.E. 47431.

SONEY FM LLC
CORY LAKE PROFESSIONAL CENTER
10329 CROSS CREEK BLVD., SUITE P
TAMPA, FL 33647
Ph: 727-420-4796
Fax: (813) 972-2846
www.soneyfmllc.com

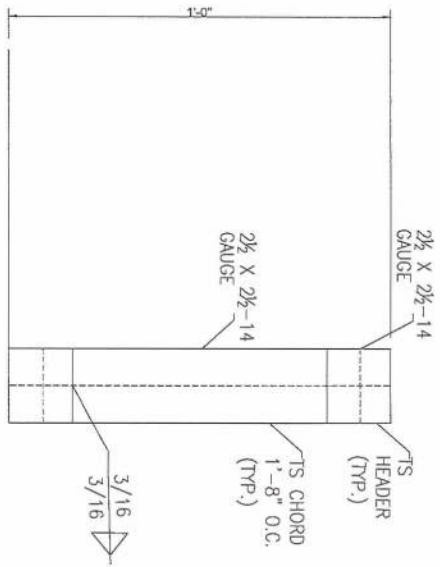


NOTE:
1. THIS SET HAS BEEN SIGNED AND SEALED BY
RAM A. GOEL, USING A DIGITAL SIGNATURE & DATE.
2. PRINTED COPIES OF THIS DOCUMENT ARE NOT
CONSIDERED SIGNED & SEALED. THIS SIGNATURE MUST
BE VIEWED ON ANY ELECTRONIC COPIES.

RAM A. GOEL, P.E. # 47431
PROFESSIONAL ENGINEER

6

OPTIONAL HEADER



HEADER DETAIL FOR DOOR
OPENINGS 12'-0" < LENGTH < 20'-0"
SEMI RYS

Ram Goel
Professional Engineer
License No. 47431
State of Florida
Date: 2021.09.29
10/30/25-04/07



THE FOLLOWING IS COMPLIANT TO THE FLORIDA
BUILDING CODE 2020, 7TH EDITION AND ASCE 7-16 FOR
WIND LOADS OF 180 MPH

NOTE:
1. THIS SET AND SPECIFICATIONS AND STANDARDS
2. PROVIDED HEREIN ARE THE PROPERTY OF SONEY FM LLC
3. NO PART OF THIS DOCUMENT MAY BE REPRODUCED OR
TRANSMITTED IN ANY FORM OR BY ANY MEANS, ELECTRONIC
OR MECHANICAL, INCLUDING PHOTOCOPYING, RECORDING, OR
BY ANY INFORMATION STORAGE AND RETRIEVAL SYSTEM, WITHOUT
PERMISSION IN WRITING FROM SONEY FM LLC.

Dr. Ram A. Goel, P.E. # 47431
Professional Engineer
State of Florida

OPTIONAL HEADER

ELITE METAL MANUFACTURING, LLC
10121 88TH TRACE
LIVE OAK, FL 32060

7

Job # 2173
Drawn By: S.K.
Checked By: R.G.

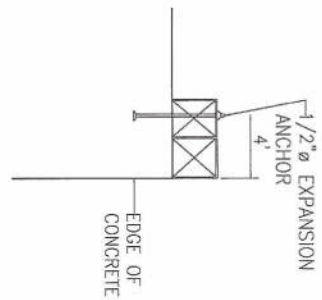
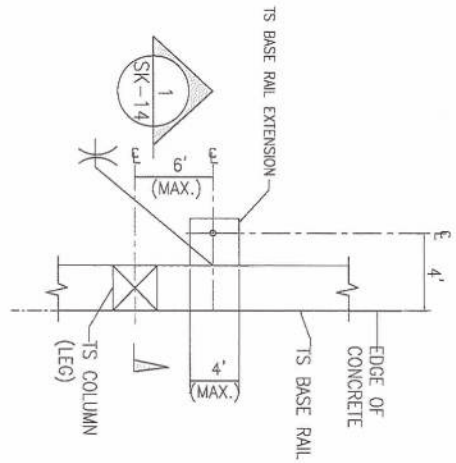
Issue Date: 08-18-21
Revisions:
1. Revision 1: 08-18-21
2. Revision 2: 08-18-21
3. Revision 3: 08-18-21
4. Revision 4: 08-18-21
5. Revision 5: 08-18-21
6. Revision 6: 08-18-21
7. Revision 7: 08-18-21
8. Revision 8: 08-18-21
9. Revision 9: 08-18-21
10. Revision 10: 08-18-21
11. Revision 11: 08-18-21
12. Revision 12: 08-18-21
13. Revision 13: 08-18-21
14. Revision 14: 08-18-21
15. Revision 15: 08-18-21
16. Revision 16: 08-18-21
17. Revision 17: 08-18-21
18. Revision 18: 08-18-21
19. Revision 19: 08-18-21
20. Revision 20: 08-18-21
21. Revision 21: 08-18-21
22. Revision 22: 08-18-21
23. Revision 23: 08-18-21
24. Revision 24: 08-18-21
25. Revision 25: 08-18-21
26. Revision 26: 08-18-21
27. Revision 27: 08-18-21
28. Revision 28: 08-18-21
29. Revision 29: 08-18-21
30. Revision 30: 08-18-21
31. Revision 31: 08-18-21
32. Revision 32: 08-18-21
33. Revision 33: 08-18-21
34. Revision 34: 08-18-21
35. Revision 35: 08-18-21
36. Revision 36: 08-18-21
37. Revision 37: 08-18-21
38. Revision 38: 08-18-21
39. Revision 39: 08-18-21
40. Revision 40: 08-18-21
41. Revision 41: 08-18-21
42. Revision 42: 08-18-21
43. Revision 43: 08-18-21
44. Revision 44: 08-18-21
45. Revision 45: 08-18-21
46. Revision 46: 08-18-21
47. Revision 47: 08-18-21
48. Revision 48: 08-18-21
49. Revision 49: 08-18-21
50. Revision 50: 08-18-21
51. Revision 51: 08-18-21
52. Revision 52: 08-18-21
53. Revision 53: 08-18-21
54. Revision 54: 08-18-21
55. Revision 55: 08-18-21
56. Revision 56: 08-18-21
57. Revision 57: 08-18-21
58. Revision 58: 08-18-21
59. Revision 59: 08-18-21
60. Revision 60: 08-18-21
61. Revision 61: 08-18-21
62. Revision 62: 08-18-21
63. Revision 63: 08-18-21
64. Revision 64: 08-18-21
65. Revision 65: 08-18-21
66. Revision 66: 08-18-21
67. Revision 67: 08-18-21
68. Revision 68: 08-18-21
69. Revision 69: 08-18-21
70. Revision 70: 08-18-21
71. Revision 71: 08-18-21
72. Revision 72: 08-18-21
73. Revision 73: 08-18-21
74. Revision 74: 08-18-21
75. Revision 75: 08-18-21
76. Revision 76: 08-18-21
77. Revision 77: 08-18-21
78. Revision 78: 08-18-21
79. Revision 79: 08-18-21
80. Revision 80: 08-18-21
81. Revision 81: 08-18-21
82. Revision 82: 08-18-21
83. Revision 83: 08-18-21
84. Revision 84: 08-18-21
85. Revision 85: 08-18-21
86. Revision 86: 08-18-21
87. Revision 87: 08-18-21
88. Revision 88: 08-18-21
89. Revision 89: 08-18-21
90. Revision 90: 08-18-21
91. Revision 91: 08-18-21
92. Revision 92: 08-18-21
93. Revision 93: 08-18-21
94. Revision 94: 08-18-21
95. Revision 95: 08-18-21
96. Revision 96: 08-18-21
97. Revision 97: 08-18-21
98. Revision 98: 08-18-21
99. Revision 99: 08-18-21
100. Revision 100: 08-18-21

DR. RAM A. GOEL, PH.D., P.E.
F.P.E. 47431.

SONEY FM LLC
CORY LAKE PROFESSIONAL CENTER
10329 CROSS CREEK BLVD., SUITE P
TAMPA, FL 33647
Ph: 727-420-4796
Fax: (813) 972-2846
www.soneyfmllc.com

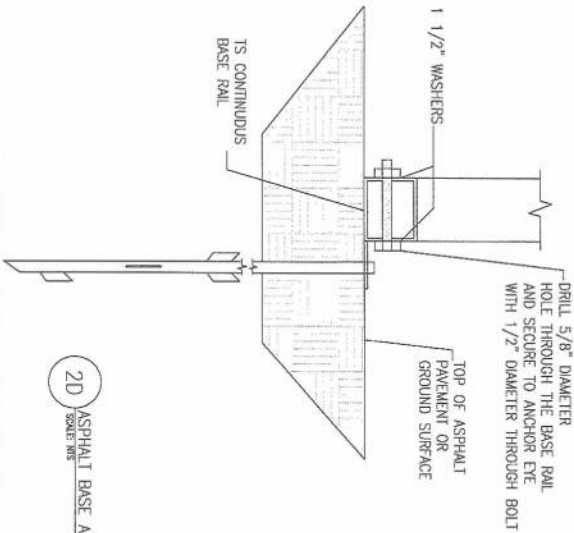
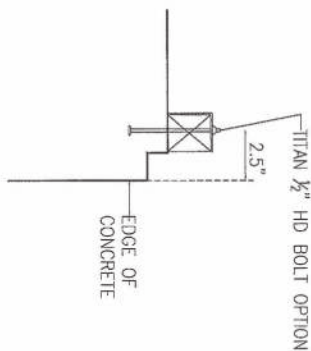
SONEY FM
ENGINEERS
Professional, Efficient & Economical

ADDITIONAL BASE RAIL ANCHORAGE OPTION

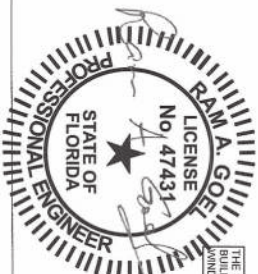


TYPICAL ANCHOR DETAIL WHEN
BASE RAIL IS NEAR EDGE OF CONCRETE
SCALE N.T.S.

SECTION 1
SCALE N.T.S.



2D
SCALE N.T.S.



THE FOLLOWING IS COMPLIANT TO THE FLORIDA
BUILDING CODE 2020, 7TH EDITION AND ASCE 7-16 FOR
WIND LOADS OF 180 MPH

Ram Goel
Engineer-in-Charge
Soney FM LLC, L.P.
Tampa, FL 33647
Phone: 727-420-4796
Fax: 813-972-2846
www.soneyfmllc.com

NOTE:
1. THIS SET WAS REVIEWED AND SEALED BY
RAM A. GOEL, ENGINEER, STATE OF FLORIDA,
LICENSE NO. 47431, ON 08/18/2020.
2. THE FOLLOWING IS COMPLIANT TO THE FLORIDA
BUILDING CODE 2020, 7TH EDITION AND ASCE 7-16 FOR
WIND LOADS OF 180 MPH.

Dr. Ram A. Goel, P.E. # 47431
SIGNED: 08/18/2020
SEAL: 08/18/2020

ADDITIONAL BASE RAIL ANCHORAGE OPTION

ELITE METAL MANUFACTURING, LLC
10121 88TH TRACE
LIVE OAK, FL 32060

8

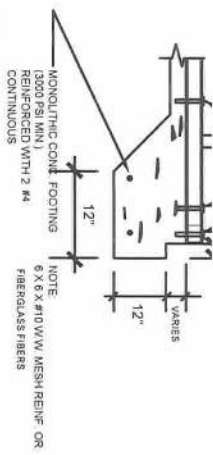
Revisions:	By	Date	Description
1	SK	08/18/2020	Issue Date
2	SK	08/18/2020	Issue Date
3	SK	08/18/2020	Issue Date
4	SK	08/18/2020	Issue Date
5	SK	08/18/2020	Issue Date
6	SK	08/18/2020	Issue Date
7	SK	08/18/2020	Issue Date
8	SK	08/18/2020	Issue Date
9	SK	08/18/2020	Issue Date
10	SK	08/18/2020	Issue Date

Job # 2173
Drawn By: S.K.
Checked By: R.G.

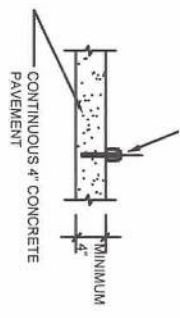
DR. RAM A. GOEL, PH.D., P.E.
F.P.E. 47431.

SONEY FM LLC
CORY LAKE PROFESSIONAL CENTER
10329 CROSS CREEK BLVD., SUITE P
TAMPA, FL 33647
Ph: 727-420-4796
Fax: (813) 972-2846
www.soneyfmllc.com

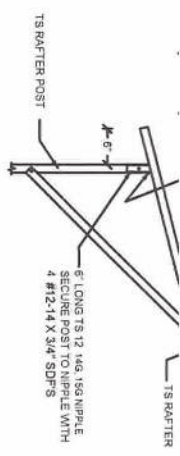
SONEY FM
ENGINEERS
Professional, Efficient & Economical



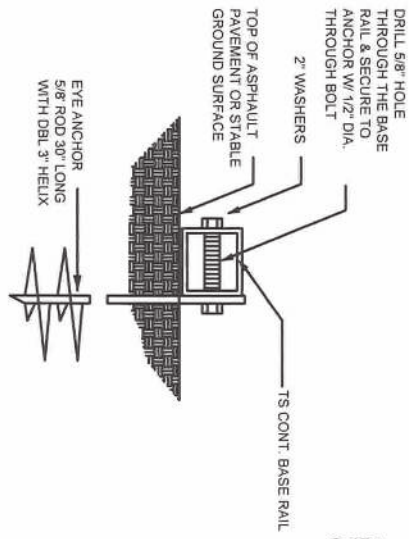
1 CONCRETE BASE RAIL ANCHORAGE
SCALE: NTS (OPTIONAL)



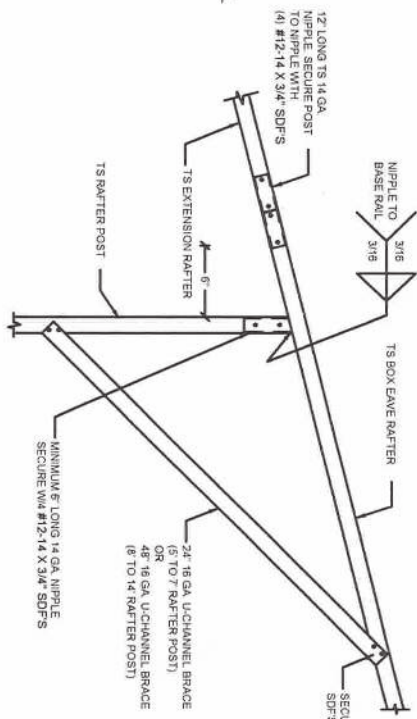
2 CONCRETE BASE RAIL ANCHORAGE
SCALE: NTS (OPTIONAL - OPEN CARPORT ONLY)



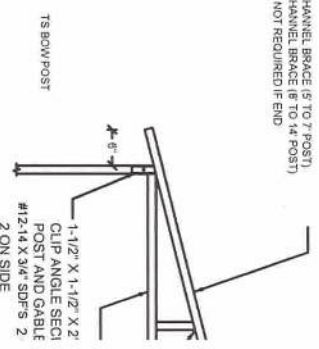
3 BOX EAVE RAFTER/CORNER POST DETAIL
SCALE: NTS



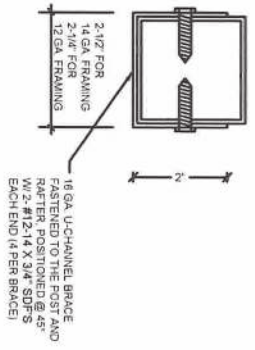
4 BASE RAIL ANCHORAGE
SCALE: NTS



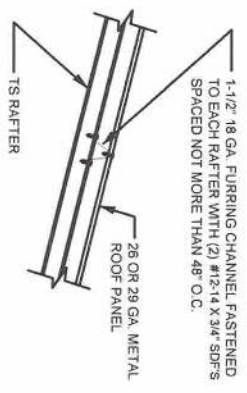
5 SIDE EXTENSION RAFTER/CORNER POST DETAIL
SCALE: NTS



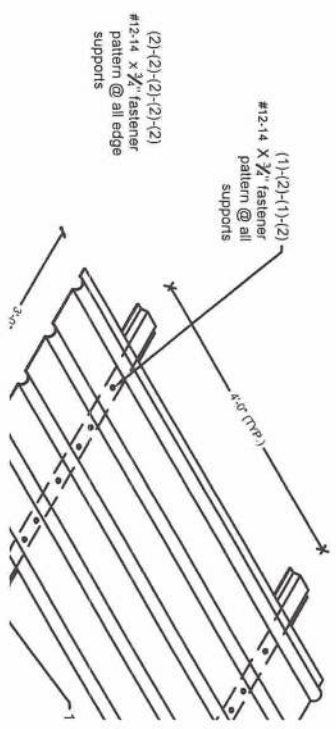
6 GABLE RAIL TO RAFTER POST CONNECTION DETAIL
SCALE: NTS

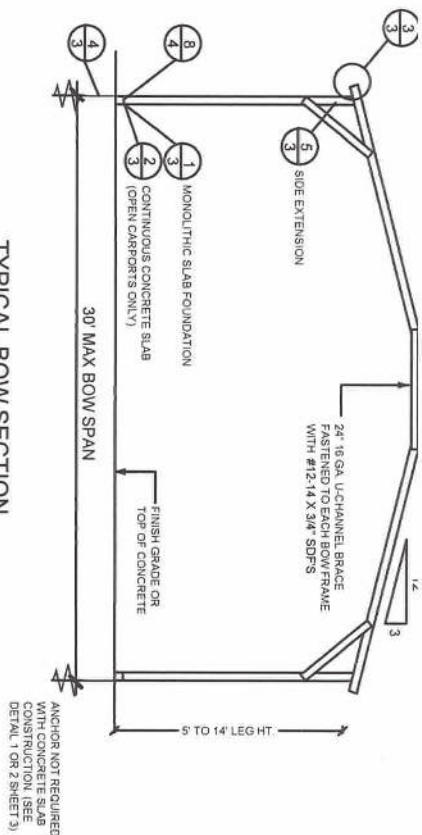


BRACE SECTION
SCALE: NTS



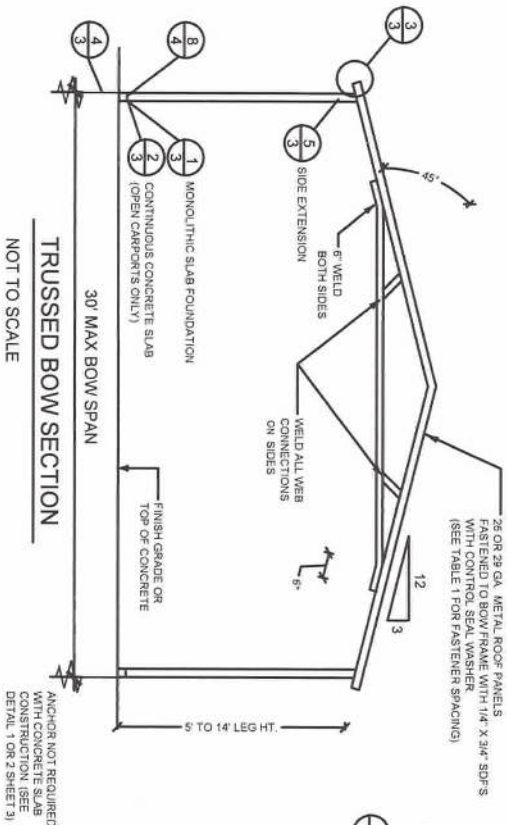
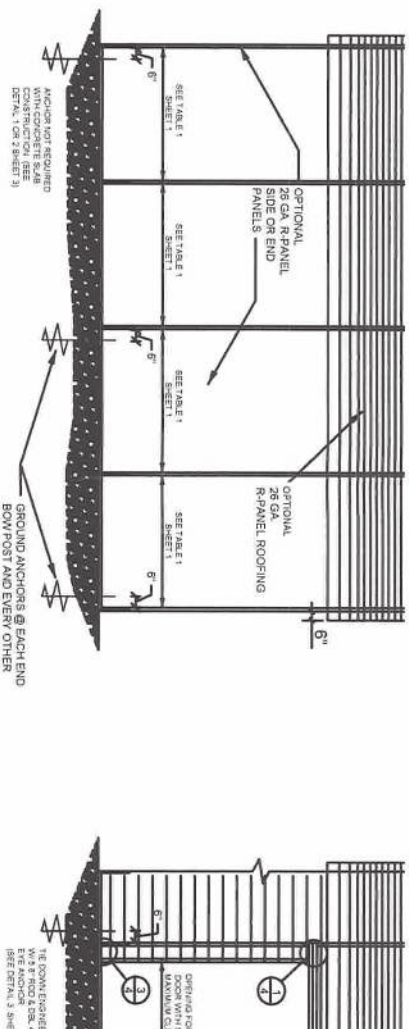
ROOF PANEL ATTACHMENT
SCALE: NTS





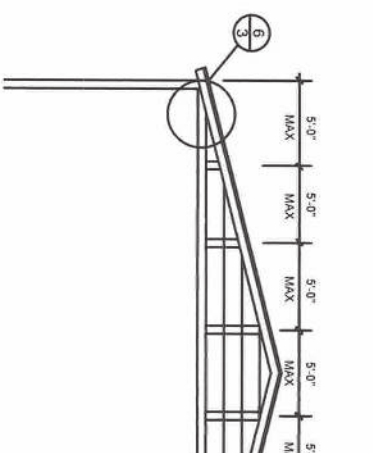
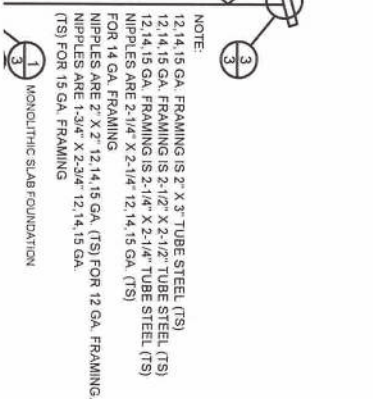
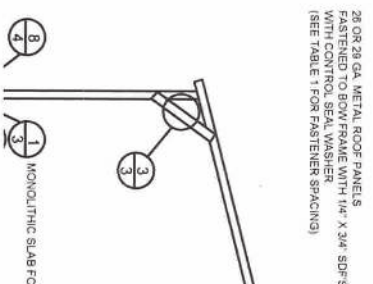
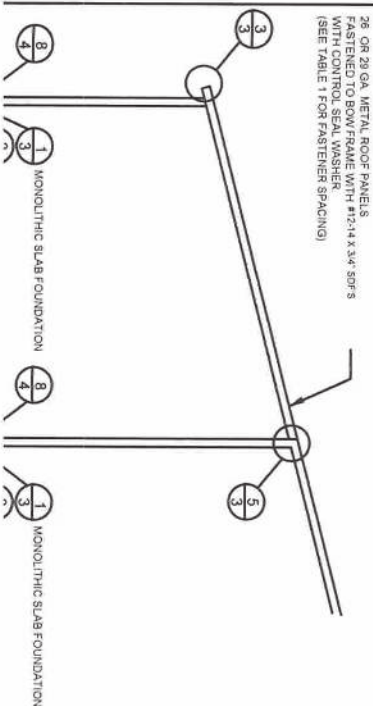
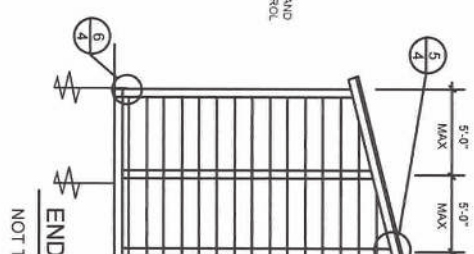
TYPICAL BOW SECTION
NOT TO SCALE

SIDE ELEVATION
NOT TO SCALE

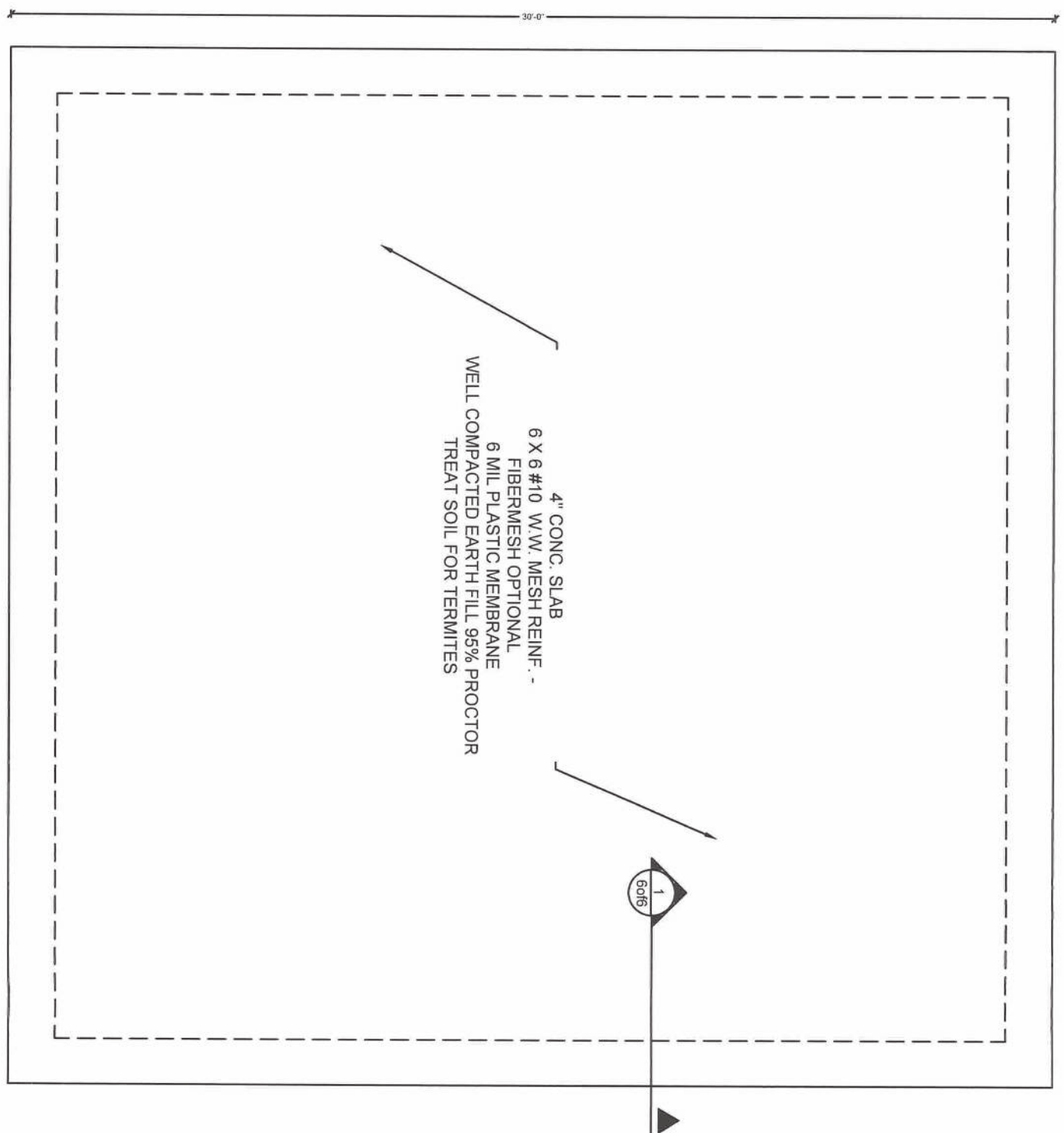


END WALL OPENING
NOT TO SCALE

END
NOT TO SCALE







MONOL. (3000 PSI) REINFORCED CONCRETE

1 MON SCAL

CONCRETE: CONCRETE SHALL HAVE A MINIMUM COMpressive strength of 3000 PSI. COVER OVER REINFORCING STEEL SHALL BE 2 INCHES FOR FOUNDATIONS. MINIMUM CONCRETE SHALL BE 3 INCHES IN FOUNDATIONS WHERE THE CONCRETE IS IN CONTACT WITH EARTH AND 1 1/2" ELSEWHERE. REINFORCING BARS SHALL HAVE A MINIMUM CLEAR DISTANCE OF 1/4" FOR BETWEEN REINFORCING BARS AND ANY FILL OR MASONRY WALLS SHALL HAVE A MASONRY UNIT NOT EXPOSED TO EARTH OR WEATHER.

REINFORCING STEEL: THE REINFORCING STEEL SHALL BE MINIMUM #4. GALVANIZATION: METAL ACCESSORIES FOR USE IN EXTERIOR SHALL BE GALVANIZED IN PLACE. PLATE CONNECTORS, SCREWS, BOLTS AND NUTS SHALL BE GALVANIZED OR HOT DIPPED GALVANIZED. REINFORCEMENT MAY BE BENT IN THE SHAPES SHOWN. 1. ALL REINFORCEMENT IS BENT COLD. 2. THE DIAMETER OF THE BEND, MEASURED IN INCHES, SHALL BE NOT LESS THAN 4 TIMES THE DIAMETER OF THE BEND. 3. REINFORCEMENT PARTIALLY EMBEDDED IN CONCRETE SHALL BE PERMITTED. EXCEPTION: WHERE BENDING IS NECESSARY, THE BENDING SHALL BE PERMITTED TO 6" OR MORE.



