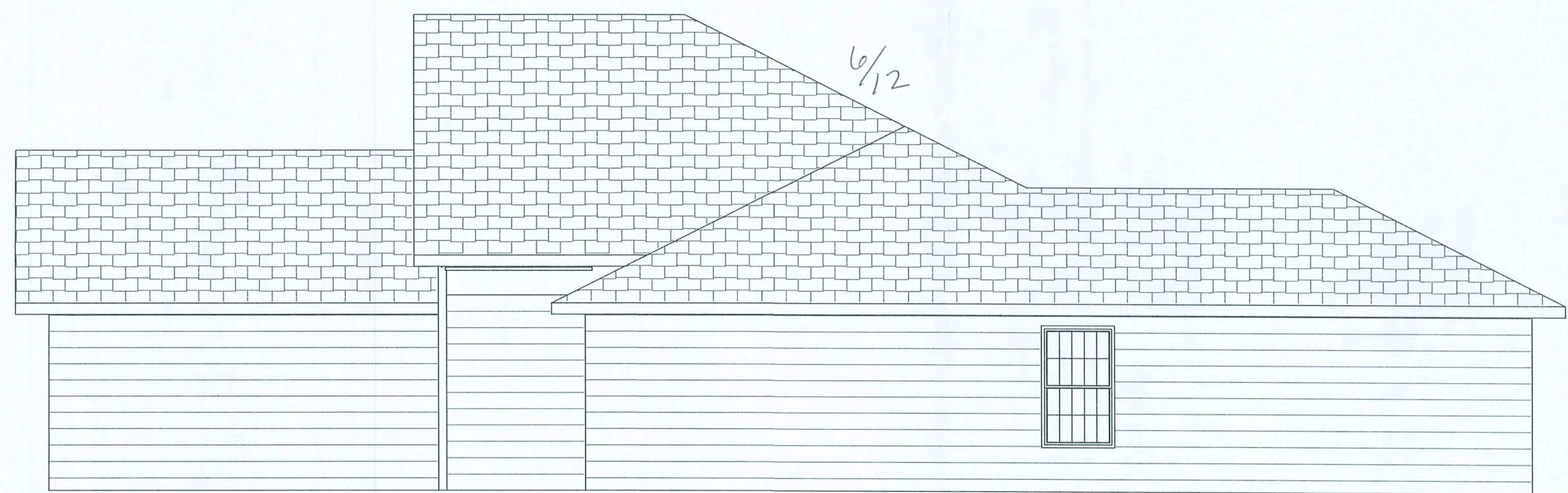
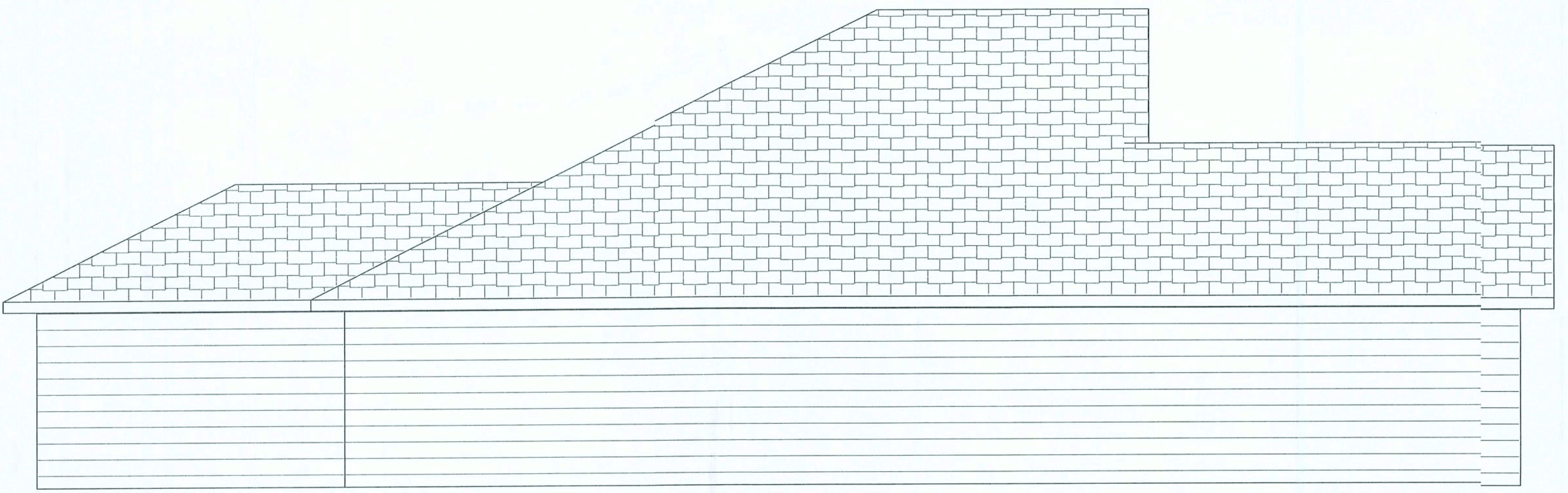
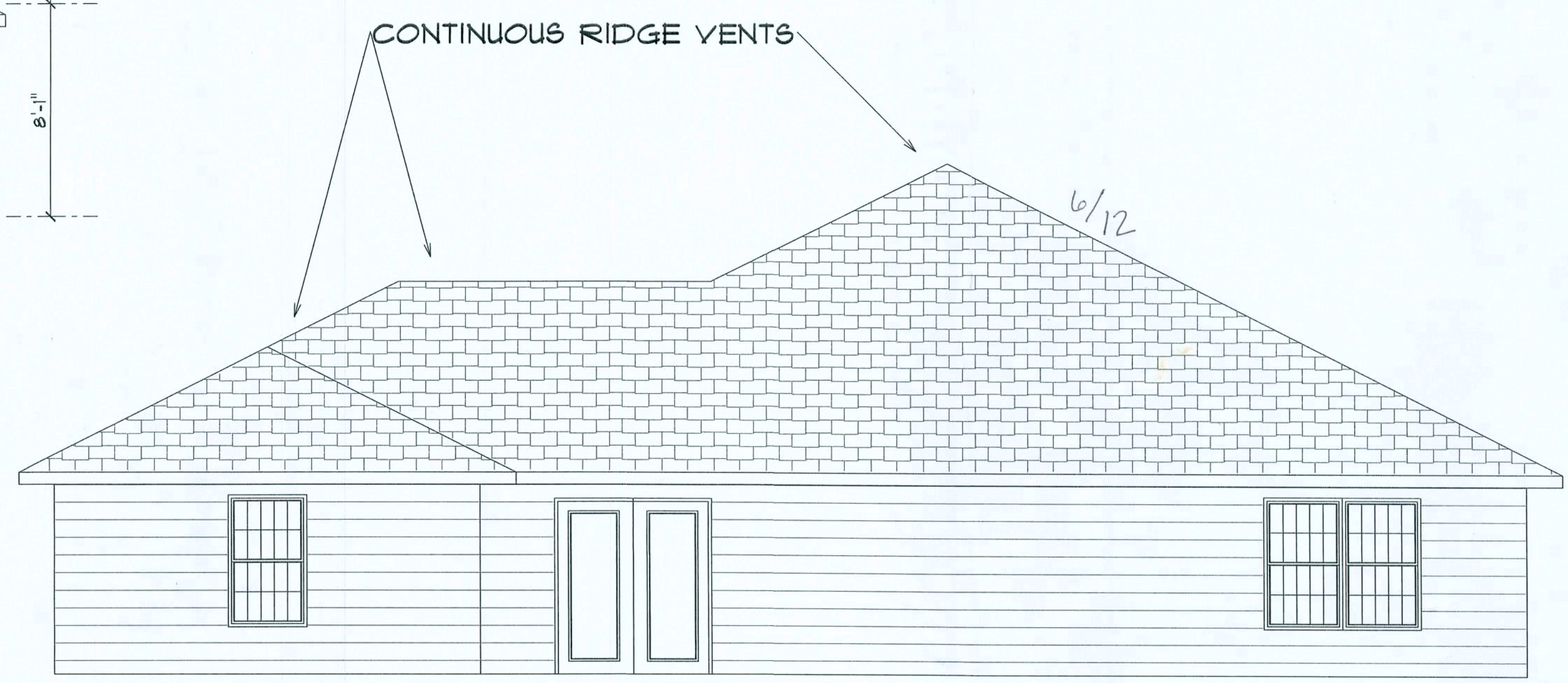
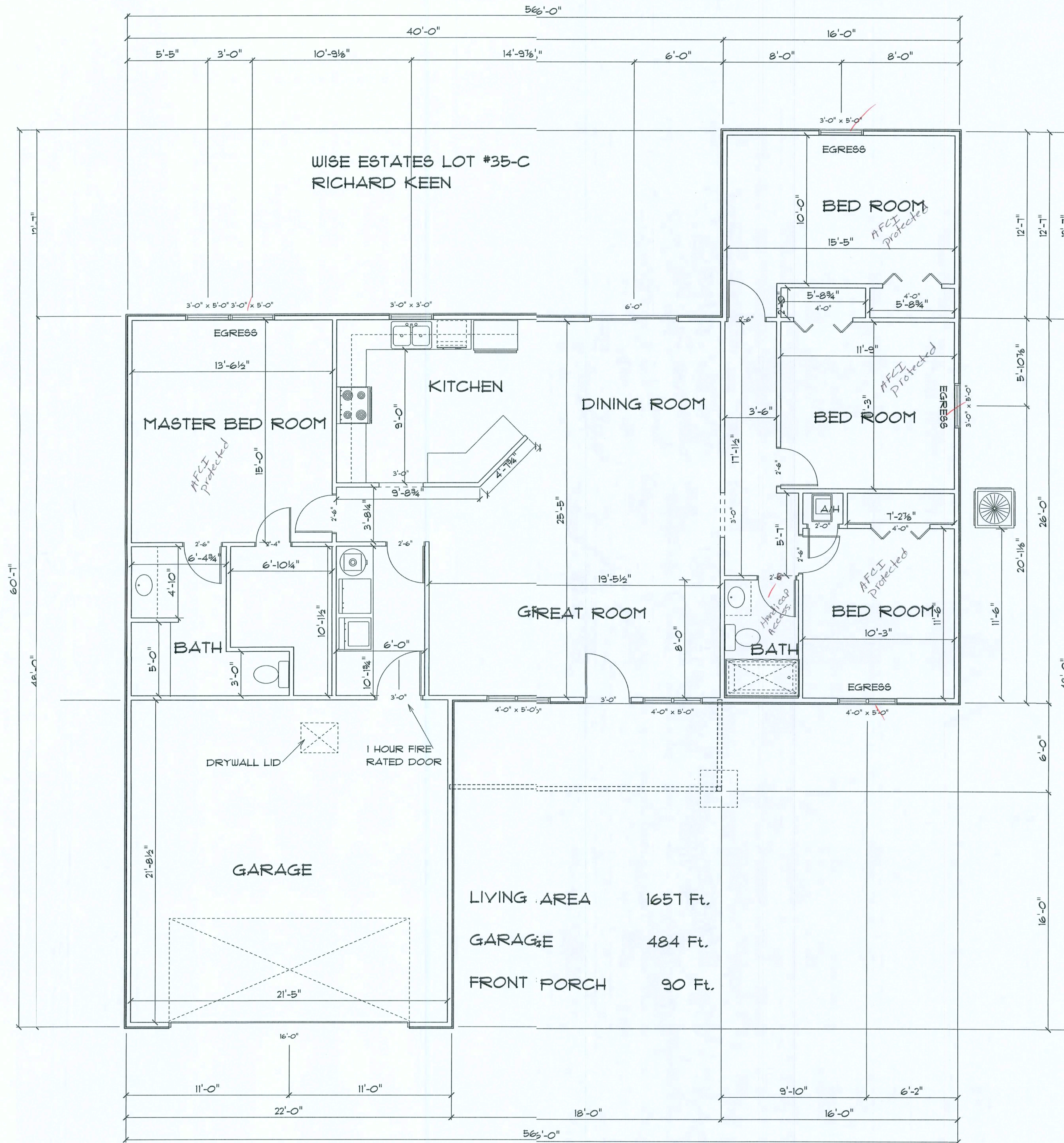
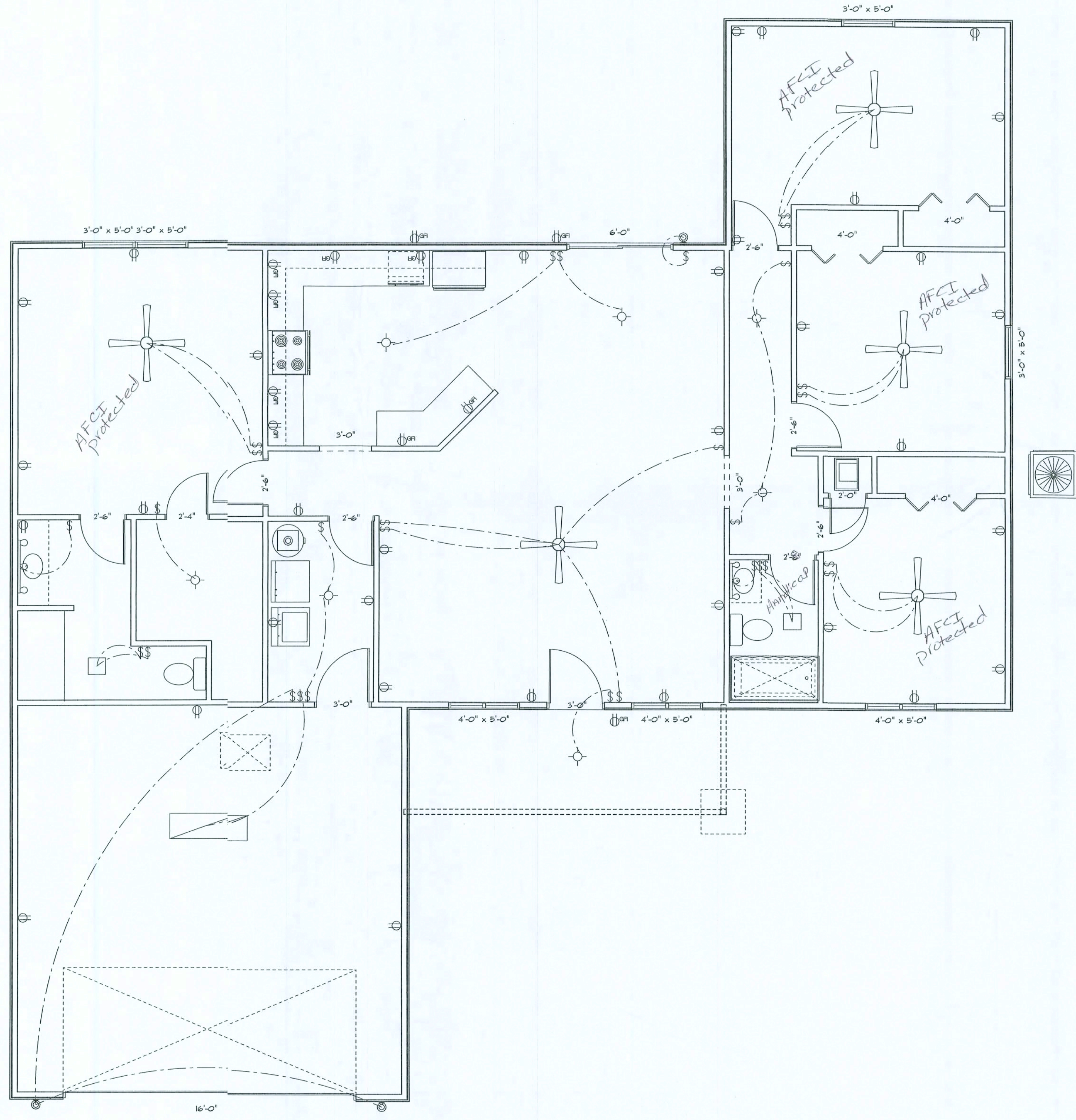


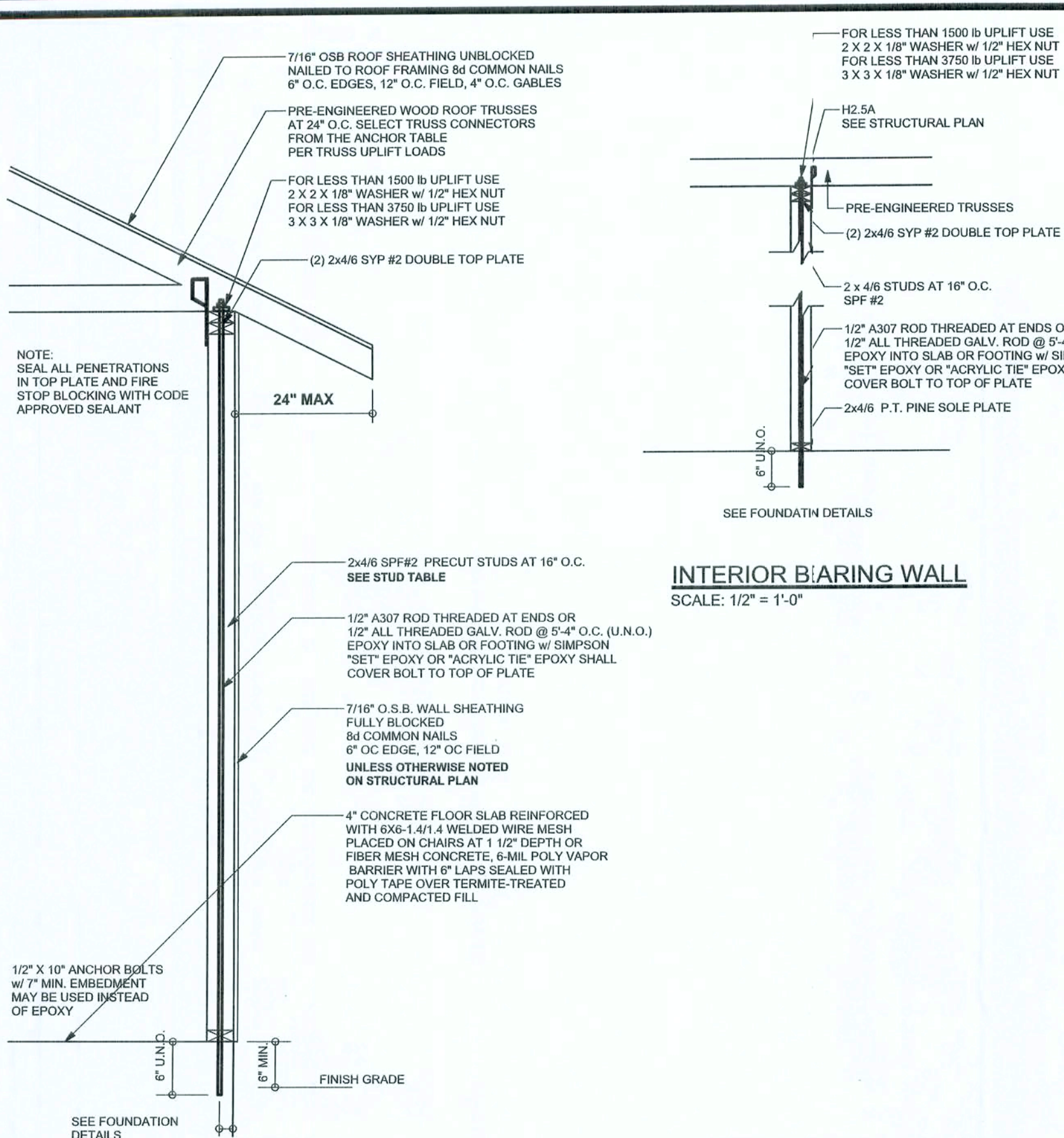
OFFICE COPY



HOMETOWN HOMES WISE ESTATES LOT # 35-C			DATE September 26, 2006
			REVISOR
			DRAWING# 1
SCALE 1/4" = 1' Feet	DRAWN BY Mike Comer		
	APPROVED		





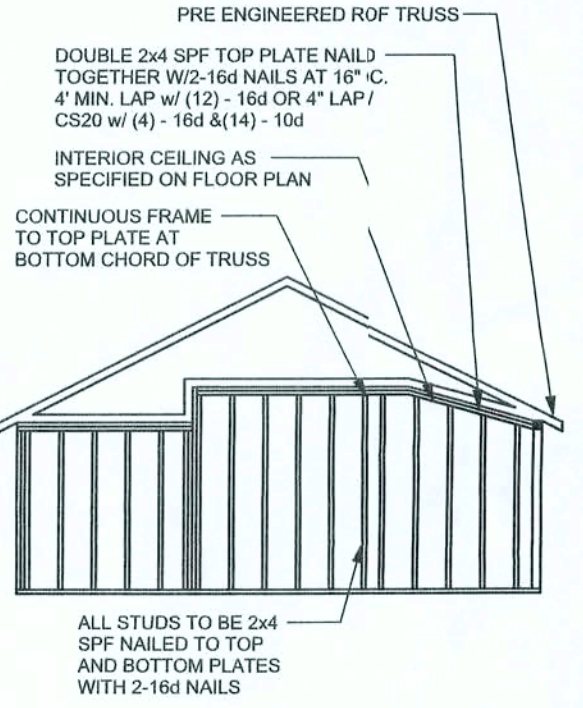


ONE STORY WALL SECTION
SCALE: 3/4" = 1'-0"

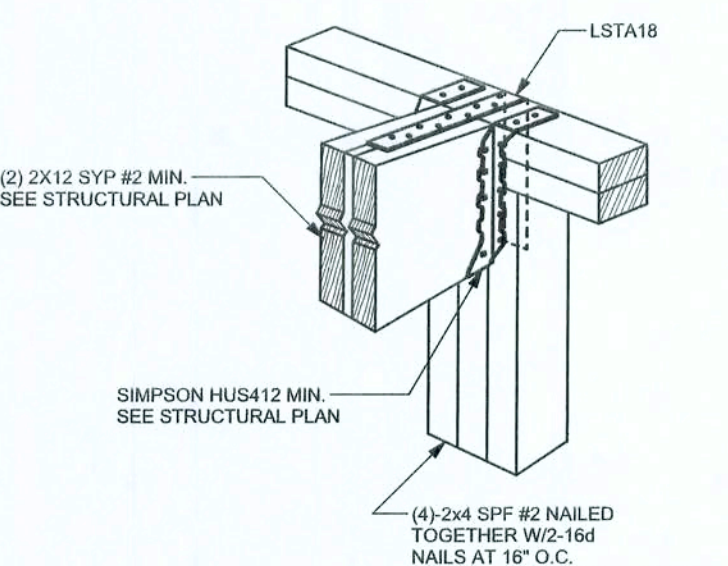
EXTERIOR WALL STUD TABLE FOR SPF #2 STUDS

(1) 2x4 @ 16" OC	TO 11'-9" STUD HEIGHT
(1) 2x4 @ 12" OC	TO 13'-0" STUD HEIGHT
(1) 2x6 @ 16" OC	TO 18'-0" STUD HEIGHT
(1) 2x6 @ 12" OC	TO 20'-0" STUD HEIGHT

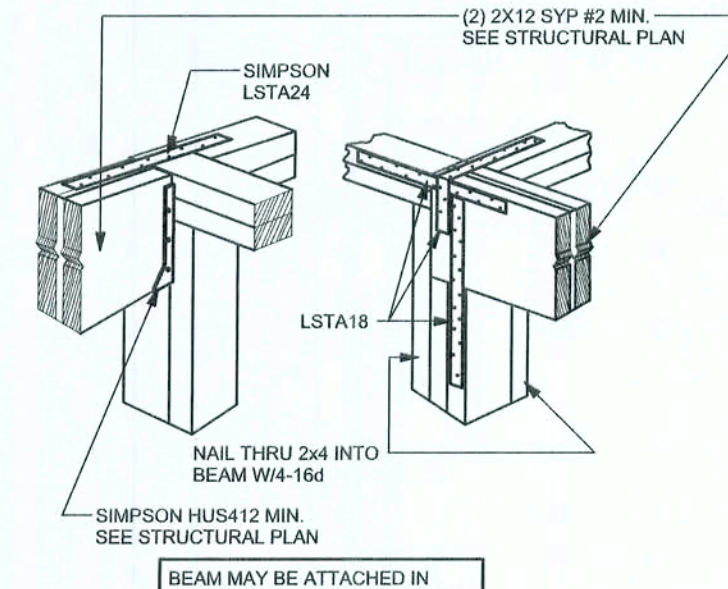
THIS STUD HEIGHT TABLE IS PER FCM 2001, TABLE 3.20B. EXTERIOR LOAD BEARING & NON-LOAD BEARING STUD LENGTHS RESISTING INTERIOR ZONE WINDLOADS 110 MPH EXPOSURE B. STUD SPACINGS SHALL BE MULTIPLIED BY 0.85 FOR FRAMING LOCATED WITHIN 4 FEET OF CORNERS FOR END ZONE LOADING. EXAMPLE 16" O.C. x 0.85 = 13.6" O.C.



CONTINUOUS FRAME TO CEILING DIAPHRAGM DETAIL
SCALE: N.T.S.

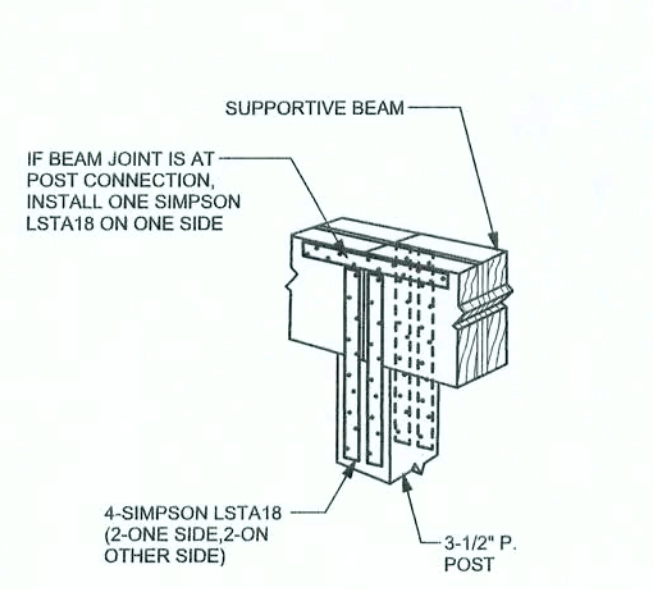


BEAM MID-WALL CONNECTION DETAIL
SCALE: N.T.S.

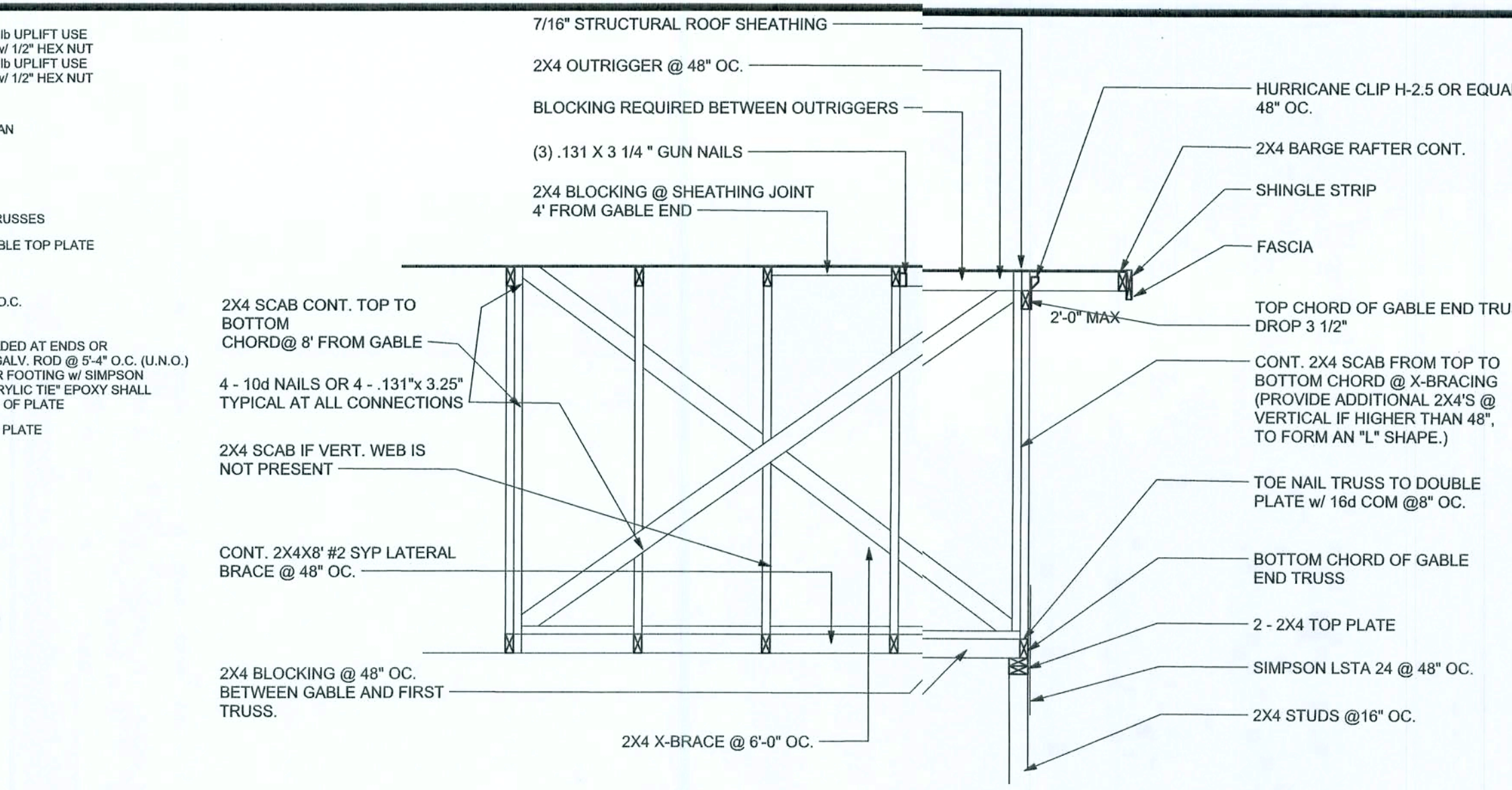


BEAM CORNER CONNECTION DETAIL
SCALE: N.T.S.

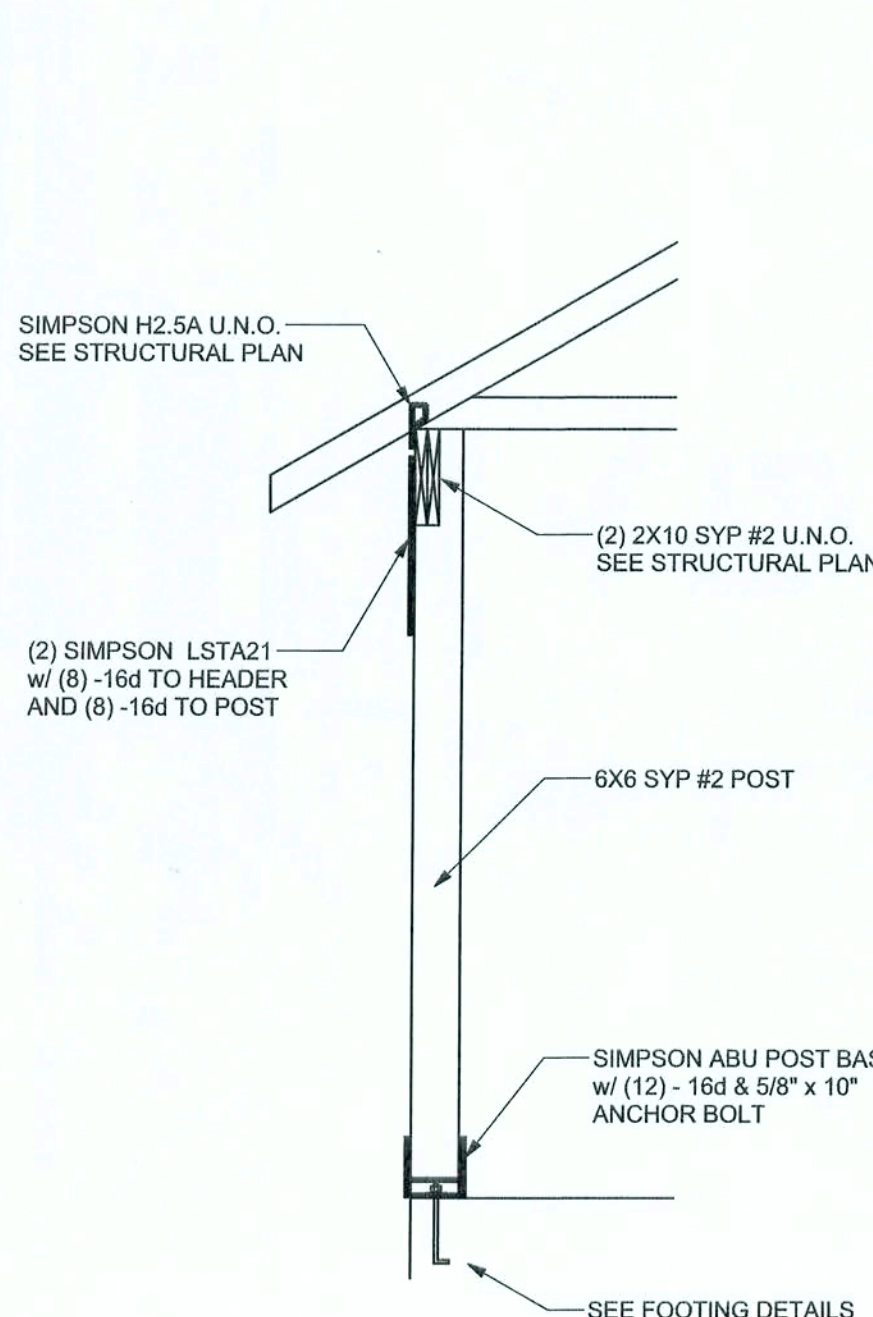
SUPPORTIVE POST TO BEAM DETAIL FOR SINGLE EAM
SCALE: N.T.S.



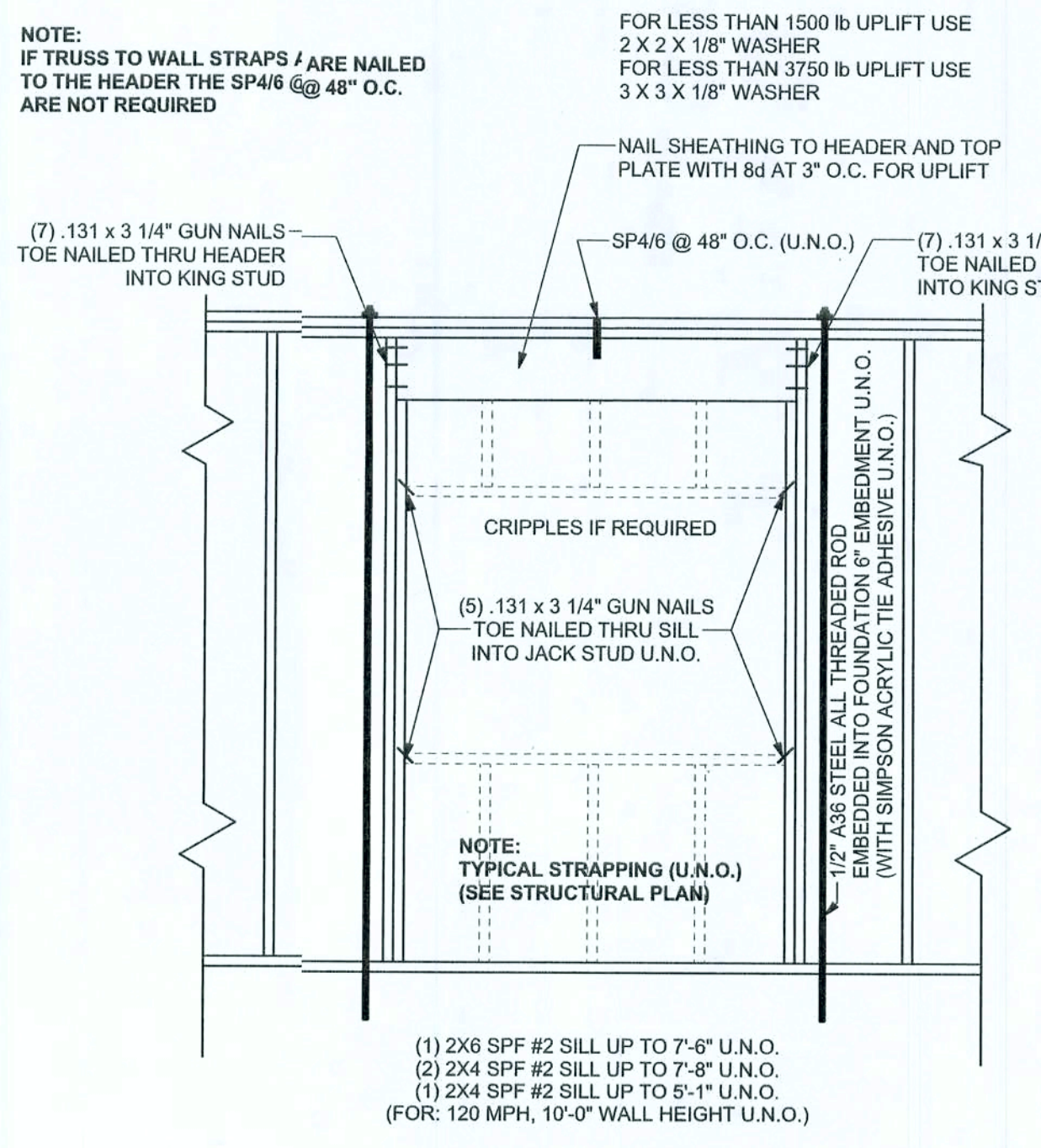
SUPPORTIVE CENTER POST TO BEAM DETAIL
SCALE: N.T.S.



TYPICAL GABLE END (X-BRACING)
ALL MEMBERS SHALL BE SYP



TYPICAL PORCH POST DETAIL
SCALE: 1/2" = 1'-0"



TYPICAL 1 STORY HEADER STRAPPING DETAIL
SCALE: 1/2" = 1'-0"

ANCHOR TABLE

OBTAIN UPLIFT REQUIREMENTS FROM TRUSS MANUFACTURER'S ENGINEERING

UPLIFT LBS. SYP	UPLIFT LBS. SPF	TRUSS CONNECTOR*	TO PLATES	TO RAFTER/TRUSS	TO STUDS
< 420	< 245	H5A	3-8d	3-8d	
< 455	< 265	H5	4-8d	4-8d	
< 360	< 235	H4	4-8d	4-8d	
< 455	< 320	H3	4-8d	4-8d	
< 415	< 365	H2.5	5-8d	5-8d	
< 600	< 535	H2.5A	5-8d	5-8d	
< 950	< 820	H6	8-8d	8-8d	
< 745	< 565	H8	5-10d, 1 1/2"	5-10d, 1 1/2"	
< 1465	< 1050	H14-1	13-8d	12-8d, 1 1/2"	
< 1465	< 1050	H14-2	15-8d	12-8d, 1 1/2"	
< 990	< 850	H10-1	8-8d, 1 1/2"	8-8d, 1 1/2"	
< 760	< 655	H10-2	6-10d	6-10d	
< 1470	< 1265	H16-1	10-10d, 1 1/2"	2-10d, 1 1/2"	
< 1470	< 1265	H16-2	10-10d, 1 1/2"	2-10d, 1 1/2"	
< 1000	< 860	MTS24C	7-10d 1 1/2"	7-10d 1 1/2"	
< 1450	< 1245	HTS24	12-10d 1 1/2"	12-10d 1 1/2"	
< 2900	< 2490	2 - HTS24			
< 2050	< 1785	LGT2	14 - 16d	14 - 16d	
HEAVY GIRDER TIEDOWNS*			TO FOUNDATION		
< 3965	< 3330	MG1		22 - 10d	1-5/8" THREADED ROD 12" EMBEDMENT
< 10880	< 6485	HGT-2		16 - 10d	2-5/8" THREADED ROD 12" EMBEDMENT
< 10530	< 9035	HGT-3		16 - 10d	2-5/8" THREADED ROD 12" EMBEDMENT
< 9250	< 9250	HGT-4		16 - 10d	2-5/8" THREADED ROD 12" EMBEDMENT
STUD STRAP CONNECTOR*			TO STUDS		
< 435	< 435	SSP DOUBLE TOP PLATE	3 - 10d		4 - 10d
< 455	< 420	SSP SINGLE SILL PLATE	1 - 10d		4 - 10d
< 825	< 825	DSP DOUBLE TOP PLATE	6 - 10d		8 - 10d
< 825	< 600	DSP SINGLE SILL PLATE	2 - 10d		8 - 10d
< 885	< 760	SP4			6 - 10d, 1 1/2"
< 1240	< 1065	SPH4			10 - 10d, 1 1/2"
< 885	< 760	SP6			6 - 10d, 1 1/2"
< 1240	< 1065	SPH6			10 - 10d, 1 1/2"
< 1235	< 1165	LSTA18	14 - 10d		
< 1235	< 1235	LSTA21	16 - 10d		
< 1030	< 1030	CS20	18 - 8d		
< 1705	< 1705	CS16	28 - 8d		
STUD ANCHORS*			TO STUDS	TO FOUNDATION	
< 1350	< 1305	LTT19	8 - 16d		1/2" AB
< 2310	< 2310	LTT131	18 - 10d, 1 1/2"		1/2" AB
< 2775	< 2570	HD2A	2-5/8" BOLTS		5/8" AB
< 4175	< 3695	HTT16	18 - 16d		5/8" AB
< 1400	< 1400	PAHD42	16 - 16d		
< 3335	< 3335	HPAHD22	16 - 16d		
< 2200	< 2200	ABU44	12 - 16d		1/2" AB
< 2300	< 2300	ABU66	12 - 16d		1/2" AB
< 2320	< 2320	ABU88	18 - 16d		2-5/8" AB

GENERAL NOTES:

TRUSSES: TRUSSES SHALL BE DESIGNED BY A FLORIDA LICENSED ENGINEER IN ACCORDANCE WITH THE FBCR 2004. TRUSS ENGINEERING SHALL INCLUDE TRUSS DESIGN, TRUSS DETAILING, TRUSS MANUFACTURING AND PERMANENT BRACING DETAILS. TRUSSES-TO-TRUSS CONNECTIONS, AND UPLIFT AND REACTION LOADS FOR ALL BEARING LOCATIONS. TRUSS ENGINEERING IS THE RESPONSIBILITY OF THE TRUSS MANUFACTURER AND SHALL BE SIGNED & SEALED BY THE MANUFACTURER'S DESIGN ENGINEER. IT IS THE BUILDER'S RESPONSIBILITY TO VERIFY THE TRUSS DESIGNER FULLY SATISFIED ALL THE ABOVE REQUIREMENTS AND TO SELECT UPLIFT CONNECTIONS BASED ON TRUSS ENGINEERING UPLIFT AND PROVIDE FOOTINGS FOR INTERIOR BEARING WALLS. BUILDER IS TO FURNISH TRUSS ENGINEERING TO WIND LOAD ENGINEER FOR REVIEW OF TRUSS REACTIONS ON THE BUILDING STRUCTURE. STRAP 2X4 RAFTERS WITH MIN UPLIFT CONNECTION 415LB EACH END, 2X4 RAFTERS 700 LB EACH END.

SITE PREPARATION: SITE ANALYSIS AND PREPARATION IS NOT PART OF THIS PLAN.

FOUNDATION: CONFIRM THAT THE FOUNDATION DESIGN & SITE CONDITIONS MEET GRAVITY LOAD REQUIREMENTS (ASSUME 1000 PSF BEARING CAPACITY UNLESS VISUAL OBSERVATION OR SOILS TEST PROVES OTHERWISE).

CONCRETE: MINIMUM COMPRESSIVE STRENGTH OF CONCRETE AT 28 DAYS, F_c = 3000 PSI.

WELDED WIRE REINFORCED SLAB: 6" x 8" W1 x W1.4 FB = 8KSI. WELDED WIRE REINFORCEMENT FABRIC (W.W.R.) CONFORMING TO ASTM A186, LOCATED IN MIDDLE OF THE SLAB, SUPPORTED WITH APPROVED MATERIALS OR SUPPORTS AT SPACINGS NOT TO EXCEED 3'.

FIBER CONCRETE SLAB: CONCRETE SLABS ON GROUND CONTAINING SYNTHETIC FIBER REINFORCEMENT. FIBER LENGTH 1/2 INCH TO 2 INCHES. DOSAGE AMOUNTS FROM 0.75 TO 1.5 POUNDS PER CUBIC YARD PER THE MANUFACTURER'S RECOMMENDATIONS. FIBERS TO COMPLY WITH ASTM C 1116. SUPPLIER TO PROVIDE ASTM C 1116 CERTIFICATION OF COMPLIANCE WHEN REQUESTED BY BUILDING OFFICIAL.

CONTROL JOINTS: WHERE SPECIFIED, SAWN CONTROL JOINTS IN SLAB-ON-GRADE SHALL BE CUT IN ACCORDANCE WITH 12 HOURS OF SLAB PLACEMENT. THE LENGTH / WIDTH RATIOS OF SLAB AREAS SHALL NOT EXCEED 1.5 AND TYPICAL SPACING OF CUTS TO BE 12FT. DO NOT CUT WMM OR REINFORCEMENT LOCATIONS OF CONTROL JOINTS IS SUBJECT TO OWNER AND CONTRACTOR'S APPROVAL. THE CONTROL JOINTS ARE NOT INTENDED TO PREVENT CRACKS BUT RATHER TO ENCOURAGE THE SLAB TO CRACK ON A GIVEN LINE.)

REBAR: ASTM A 615, GRADE 60, DEFORMED BARS, F_y = 60 KSI. ALL LAP SPLICES 40" DB (25" FOR #5 BARS); UNO. ALL REINFORCEMENT SHALL BE DETAILED AND PLACED IN ACCORDANCE WITH ACI 315-96, U.N.O.

GLULAM BEAMS: GLULAM BEAM, GLB, 24F-V3SP, F_b = 2,484, E = 1,800,000; UNO. SUPPLIER MAY SUPPLY AN ALTERNATE BEAM WITH EQUAL PROPERTIES OR MAY SUBMIT THEIR OWN SIZING CALCULATIONS. ALL ROOFS ARE HORIZONTAL DIAPHRAGMS; 7/16" OSB SHEATHING, UNBLOCKED, APPLIED PERPENDICULAR TO FRAMING, OVER A MINIMUM OF 3 FRAMING MEMBERS, WITH PANEL EDGES STAGGERED, FASTENED WITH 6 COMMON NAILS (131), 6" OC PANEL EDGES, 12" OC INTERMEDIATE MEMBERS, GABLE ENDS AND DIAPHRAGM BOUNDARY, 4" OC UNO.

STRUCTURAL CONNECTORS: MANUFACTURERS AND PRODUCT NUMBER FOR CONNECTORS, ANCHORS, AND REINFORCEMENT ARE LISTED FOR EXAMPLE NOT ENDORSEMENT, AN EQUIVALENT DEVICE OF THE SAME OR OTHER MANUFACTURER CAN BE SUBSTITUTED FOR ANY DEVICES LISTED IN THE EXAMPLE TABLES AS LONG AS IT MEETS THE REQUIRED LOAD CAPACITIES. MANUFACTURER'S INSTALLATION INSTRUCTIONS MUST BE FOLLOWED TO ACHIEVE RATED LOADS.

ANCHOR BOLTS: A-307 ANCHOR BOLTS WITH MINIMUM EMBEDMENT AS SPECIFIED IN DRAWINGS BUT NO LESS THAN 7" IN CONCRETE OR REINFORCED BOND BEAM OR 15" IN GROUTED CMU.

WASHERS: WASHERS USED WITH 1/2" BOLTS TO BE 2" x 2" x 9/64"; WITH 5/8" BOLTS TO BE 3" x 3" x 9/64"; WITH 3/4" BOLTS TO BE 3" x 3" x 9/64"; WITH 7/8" BOLTS TO BE 3" x 3" x 5/16"; UNO.

NAILS: ALL NAILS ARE COMMON NAILS UNLESS OTHERWISE SPECIFIED OR ACCEPTED BY FBC TEST REPORTS AS HAVING EQUAL STRUCTURAL VALUES.

BUILDER'S RESPONSIBILITY

THE BUILDER AND OWNER ARE RESPONSIBLE FOR THE FOLLOWING, WHICH ARE SPECIFICALLY NOT PART OF THE WIND LOAD ENGINEER'S SCOPE OF WORK.

CONFIRM SITE CONDITIONS, FOUNDATION BEARING CAPACITY, GRADE AND BACKFILL HEIGHT, WIND SPEED AND DEBRIS ZONE, AND FLOOD ZONE.

PROVIDE MATERIALS AND CONSTRUCTION TECHNIQUES, WHICH COMPLY WITH FBCR 2004 REQUIREMENTS FOR THE STATED WIND VELOCITY AND DESIGN PRESSURES.

VERIFY THE TRUSS MANUFACTURER'S SEALED ENGINEERING INCLUDES TRUSS DESIGN, TRUSS DETAILING, TRUSS MANUFACTURING AND PERMANENT BRACING DETAILS. TRUSSES-TO-TRUSS CONNECTIONS, AND UPLIFT AND REACTION LOADS FOR ALL BEARING LOCATIONS.

ROOF SYSTEM DESIGN

THE SEAL ON THESE PLANS FOR COMPLIANCE WITH FBCR 2004, SECTION R301.2.1 IS BASED ON REACTIONS, UPLIFTS, AND BEARING LOCATIONS IN TRUSS ENGINEERING SUBMITTED TO THE WIND LOAD ENGINEER. IT IS THE RESPONSIBILITY OF THE BUILDER TO CHECK ALL DETAILS OF THE COMPLETE ROOF SYSTEM DESIGN SUBMITTED BY THE TRUSS MANUFACTURER AND HAVE IT SIGNED, AND SEALED BY A DESIGN PROFESSIONAL FOR CORRECT APPLICATION OF FBC 2001 REQUIRED LOADS AND ANY SPECIAL LOADS. THE BUILDER IS RESPONSIBLE TO REVIEW EACH INDIVIDUAL TRUSS MEMBER AND THE TRUSS ROOF SYSTEM AS A WHOLE AND TO PROVIDE RESTRAINT FOR ANY LATERAL BRACING. THE BUILDER SHOULD USE CARE CHECKING THE ROOF DESIGN BECAUSE THE WIND LOAD ENGINEER IS SPECIFICALLY NOT RESPONSIBLE FOR THE TRUSS LAYOUT WHICH WAS CREATED BY THE TRUSS MANUFACTURER AND THE TRUSS DESIGNER ALSO DENIES RESPONSIBILITY FOR THE LAYOUT PER NOTES ON THEIR SEALED TRUSS SHEETS.

DESIGN DATA

WIND LOADS PER FLORIDA BUILDING CODE 2004 RESIDENTIAL, SECTION R301.2.1
(ENCLOSED SIMPLE DIAPHRAGM BUILDINGS WITH FLAT, HIPPED, OR GABLE ROOFS; MEAN ROOF HEIGHT NOT EXCEEDING LEAST HORIZONTAL DIMENSION OR 60 FT; NOT ON UPPER HALF OF HILL OR ESCARPMENT 50FT IN EXP. B, 30FT IN EXP. C AND >10% SLOPE AND UNOBSTRUCTED UPWIND FOR 50x HEIGHT OR 1 MILE WHICHEVER IS LESS.)

- BUILDING IS NOT IN THE HIGH VELOCITY HURRICANE ZONE
BUILDING IS NOT IN THE WIND-BORNE DEBRIS REGION
- 1) BASIC WIND SPEED = 110 MPH
 - 2) WIND EXPOSURE = B
 - 3) WIND IMPORTANCE FACTOR = 1.0
 - 4) BUILDING CATEGORY = II
 - 5) ROOF ANGLE = 10-45 DEGREES
 - 6) MEAN ROOF HEIGHT = <30 FT
 - 7) INTERNAL PRESSURE COEFFICIENT = N/A (ENCLOSED BUILDING)
 - 8) COMPONENTS AND CLADDING DESIGN WIND PRESSURES (TABLE R301.2(2))

Zone	Effective Wind Area (ft ²)	10	100
1	19.9	21.8	18.1
2	19.9	25.5	16.1
2 Other	-40.6	-40.6	-40.6
3	19.9	25.5	18.1
3 Other	-68.3	-42.4	-42.4
4	21.8	23.6	18.5
5	21.8	29.1	18.5
Doors & Windows Worst Case (Zone 5, 10 ft ²)	21.8	-29.1	-29.1
8x7 Garage Door	19.5	-22.9	-22.9
16x7 Garage Door	18.5	-21.0	-21.0

DESIGN LOADS	
FLOOR	40 PSF (ALL OTHER DWELLING ROOMS)
	30 PSF (SLEEPING ROOMS)
	30 PSF (ATTICS WITH STORAGE)
	10 PSF (ATTICS WITHOUT STORAGE, <3:12)
ROOF	20 PSF (FLAT OR <4:12)
	16 PSF (4:12 TO <12:12)
	12 PSF (12:12 AND GREATER)
STAIRS	40 PSF (ONE & TWO FAMILY DWELLINGS)
	SOIL BEARING CAPACITY 1000PSF
NOT IN FLOOD ZONE (BUILDER TO VERIFY)	

REVISIONS	



WINDLOAD ENGINEER: Mark Disoway, P.E. No. 53915, P.O. Box 868, Lake City, FL 32096, 386-754-5419

DIMENSIONS: Stated dimensions supersede scaled dimensions. Refer all questions to Mark Disoway, P.E. for resolution. Do not proceed without clarification.

COPYRIGHTS AND PROPERTY RIGHTS: Mark Disoway, P.E. hereby expressly reserves its common law copyrights and property right in these instruments of service. This document is not to be reproduced, altered or copied in any form or manner without first the express written permission and consent of Mark Disoway.

CERTIFICATION: I hereby certify that I have examined this plan, and that the applicable portions of the plan, relating to wind engineering, comply with section R301.2.1, Florida building code residential 2004, to the best of my knowledge.

LIMITATION: This design is valid for one building, at specified location.

MARK DISOWAY
P.E. 53915
15-SEP-06
SEALED

Keen Richard

Spec House Lot 35
Wise Estates S/D

ADDRESS:
Lot 35 Wise Estates S/D
Columbia County, Florida

Mark Disoway P.E.
P.O. Box 868
Lake City, Florida 32056
Phone: (386) 754 - 5419
Fax: (386) 269 - 4871

PRINTED DATE:
September 15, 2006

DRAWN BY: Ben Sparks
CHECKED BY:

FINALS DATE:
15 / Sep / 06

JOB NUMBER:
609085

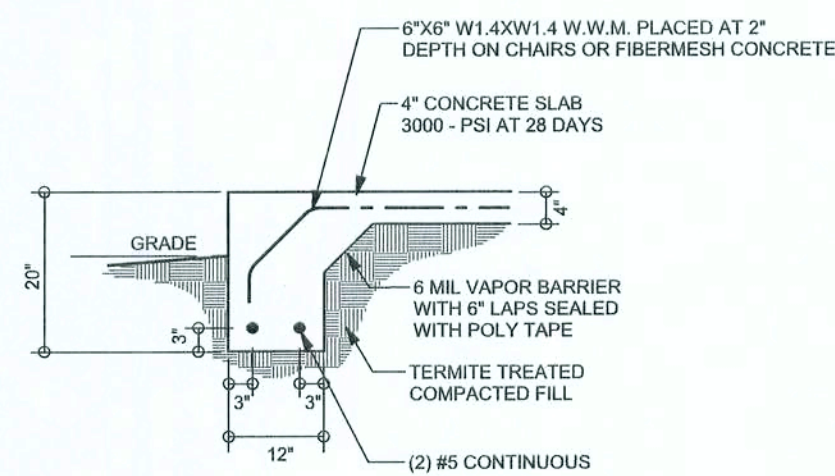
DRAWING NUMBER

S-1

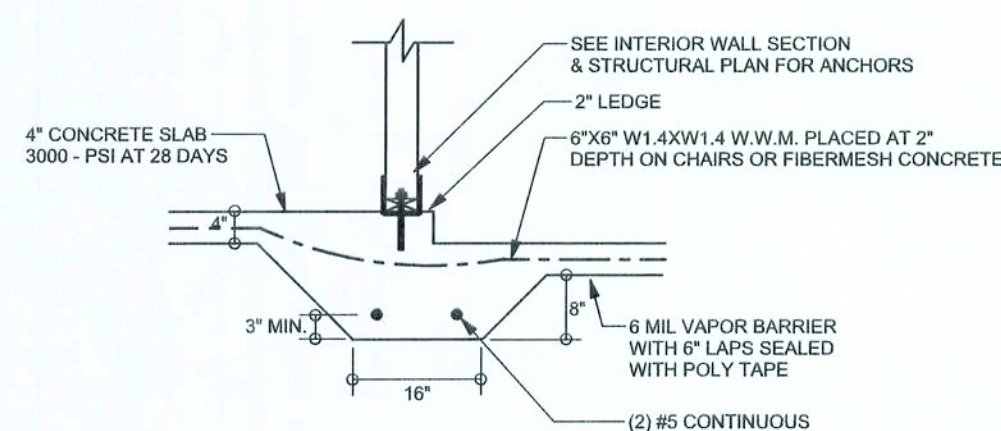
OF 3 SHEETS

REVISIONS	

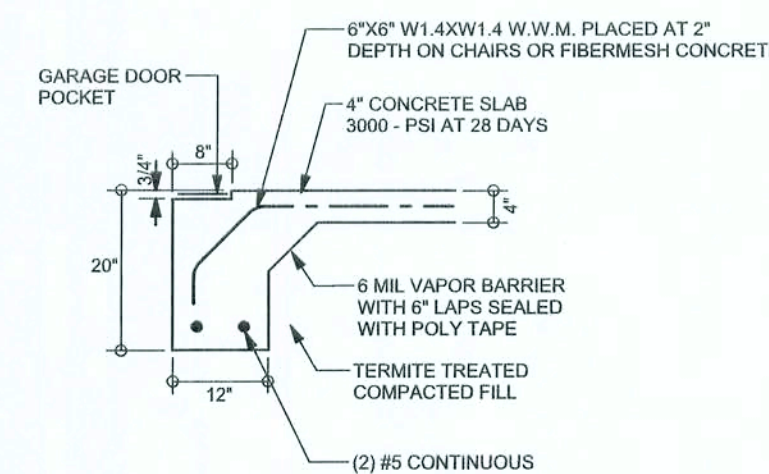
SOFTPLAN
ARCHITECTURAL DESIGN SOFTWARE



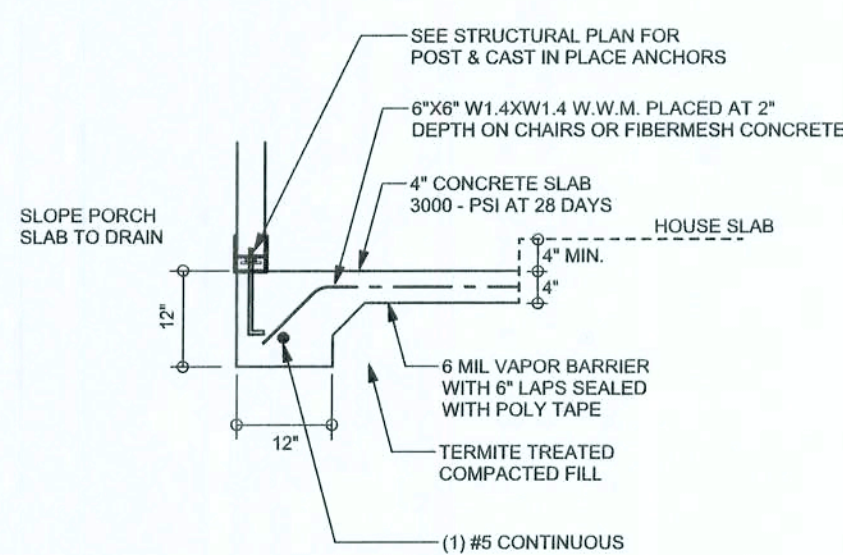
F1
S-2 MONOLITHIC FOOTING
SCALE: 1/2" = 1'-0"



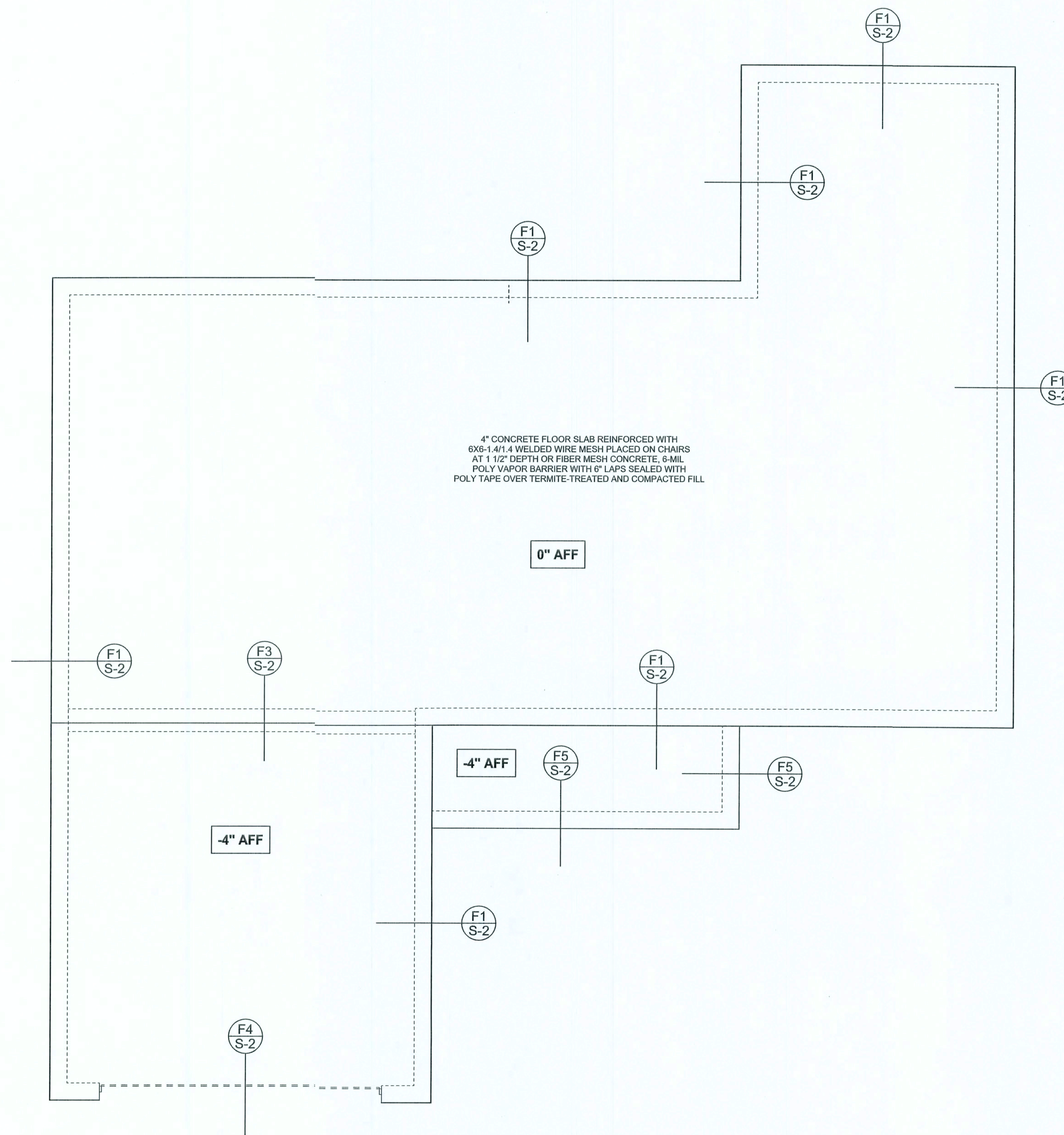
F3
S-2 INTERIOR BEARING STEP FOOTING WITH 2" LEDGE
SCALE: 1/2" = 1'-0"



F4
S-2 GARAGE DOOR FOOTING
SCALE: 1/2" = 1'-0"



F5
S-2 PORCH FOOTING
SCALE: 1/2" = 1'-0"



FOUNDATION PLAN

SCALE: 1/4" = 1'-0"

DIMENSIONS ON STRUCTURAL SHEETS ARE NOT EXACT. REFER TO ARCHITECTURAL FLOOR PLAN FOR ACTUAL DIMENSIONS

WINDLOAD ENGINEER: Mark Disosway,
P.E. No. 53915, PCB 868, Lake City, FL
32056, 386-754-5419

DIMENSIONS:
Stated dimensions supercede scaled dimensions. Refer all questions to Mark Disosway, P.E. for resolution. Do not proceed without clarification.

COPYRIGHTS AND PROPERTY RIGHTS:
Mark Disosway, P.E. hereby expressly reserves its common law copyrights and property right in these instruments of service. This document is not to be reproduced, altered or copied in any form or manner without first the express written permission and consent of Mark Disosway.

CERTIFICATION: I hereby certify that I have examined this plan, and that the applicable portions of the plan, relating to wind engineering comply with section F501.2.1, Florida building code residential 2004, to the best of my knowledge.

LIMITATION: This design is valid for one building, at specified location.

MARK DISOSWAY
P.E. 53915
Mark Disosway
15 SEP 06
SEAL

Keen Richard

Spec House Lot 35
Wise Estates S/D

ADDRESS:
Lot 35 Wise Estates S/D
Columbia County, Florida

Mark Disosway P.E.
P.O. Box 868
Lake City, Florida 32056
Phone: (386) 754 - 5419
Fax: (386) 269 - 4871

PRINTED DATE:
September 15, 2006

DRAWN BY: Ben Sparks
CHECKED BY:

FINALS DATE:
15 / Sep / 06

JOB NUMBER:
609085

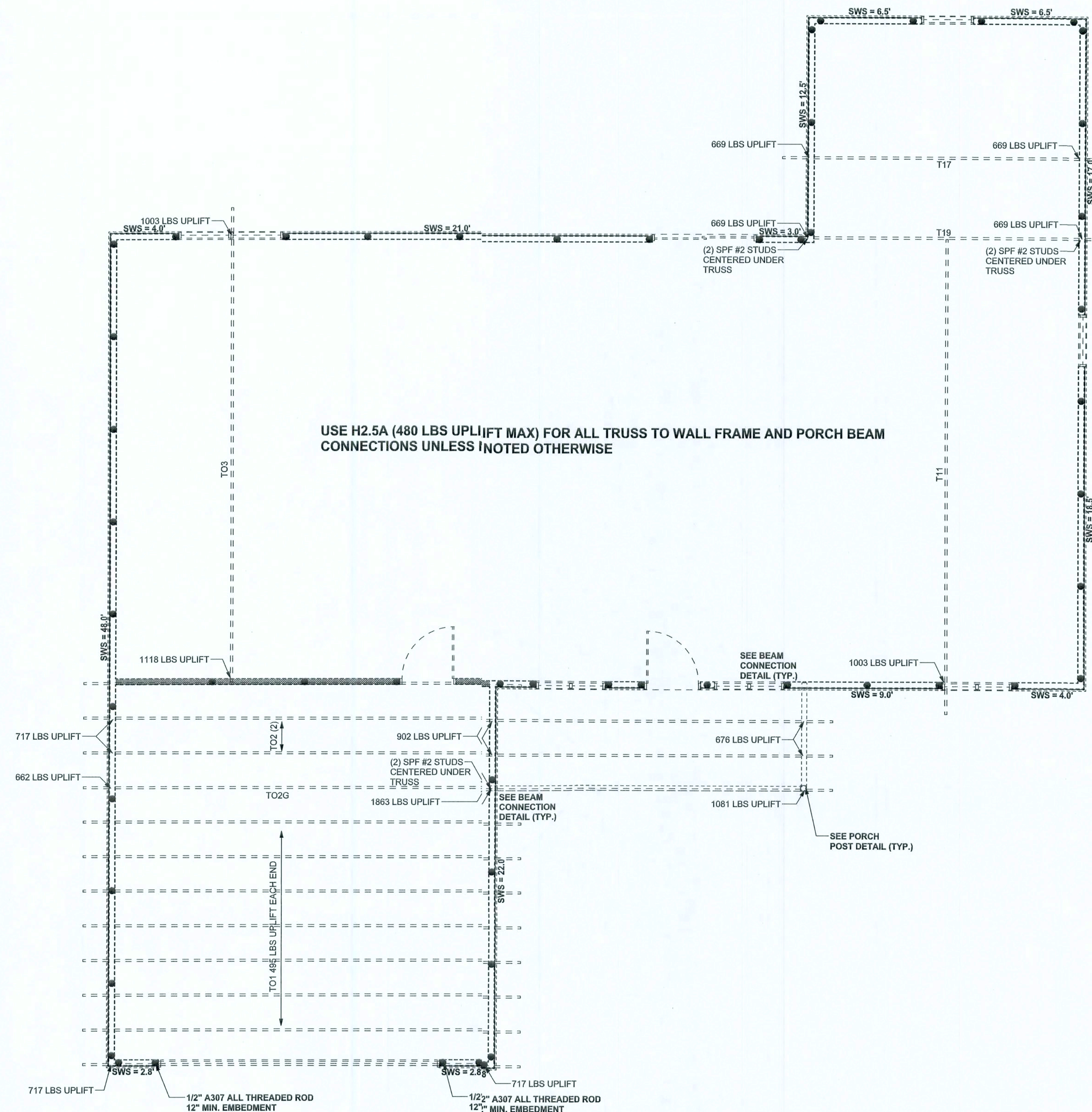
DRAWING NUMBER

S-2

OF 3 SHEETS

REVISIONS

SOFTPLAN
ARCHITECTURAL DESIGN SOFTWARE



STRUCTURAL PLAN
SCALE: 1/4" = 1'-0"

STRUCTURAL PLAN NOTES

- SN-1 ALL LOAD BEARING FRAME WALL & PORCH HEADERS SHALL BE A MINIMUM OF (2) 2X12 SYP#2 (U.N.O.)
- SN-2 ALL LOAD BEARING FRAME WALL HEADERS SHALL HAVE (1) JACK STUD & (1) KING STUD EACH SIDE (U.N.O.)
- SN-3 DIMENSIONS ON STRUCTURAL SHEETS ARE NOT EXACT. REFER TO ARCHITECTURAL FLOOR PLAN FOR ACTUAL DIMENSIONS
- SN-4 PERMANENT TRUSS BRACING IS TO BE INSTALLED AT LOCATIONS AS SHOWN ON THE SEALED TRUSS DRAWINGS. LATERAL BRACING IS TO BE RESTRAINED PER BCSI-03, BCSI-B1, BCSI-B2, & BCSI-B3. BCSI-B1, BCSI-B2, & BCSI-B3 ARE FURNISHED BY THE TRUSS SUPPLIER, WITH THE SEALED TRUSS PACKAGE

WALL LEGEND

SWS = 0.0'	1ST FLOOR EXTERIOR WALL
SWS = 0.0'	2ND FLOOR EXTERIOR
IBW	1ST FLOOR INTERIOR BEARING WALLS SEE DETAILS ON SHEET S-1
IBW	2ND FLOOR INTERIOR BEARING WALLS SEE DETAILS ON SHEET S-1

THREADED ROD LEGEND

- INDICATES LOCATION OF:
1ST FLOOR 1/2" A307 ALL THREADED ROD
- INDICATES LOCATION OF:
2ND FLOOR 1/2" A307 ALL THREADED ROD

TOTAL SHEAR WALL SEGMENTS

SWS = 0.0' INDICATES SHEAR WALL SEGMENTS

	REQUIRED	ACTUAL
TRANSVERSE	35.0'	118.0'
LONGITUDINAL	19.0'	59.5'

HEADER LEGEND

- (2) 2X12X0', 1J 1K — HEADER/BEAM CALL-OUT (U.N.O.)
- NUMBER OF KING STUDS (FULL LENGTH)
- NUMBER OF JACK STUDS (UNDER HEADER)
- SPAN OF HEADER
- SIZE OF HEADER MATERIAL
- NUMBER OF PLIES IN HEADER

CONNECTIONS, WALL, & HEADER DESIGN IS BASED ON REACTIONS & UPLIFTS FROM TRUSS ENGINEERING FURNISHED BY BUILDER. BUILDERS FIRST SOURCE (JOB # L208875)

WINDLOAD ENGINEER: Mark Disoway,
P.E. No. 53915, P.O. Box 868, Lake City, FL
32056, 386-754-5419

DIMENSIONS:
Stated dimensions supersede scaled dimensions. Refer all questions to Mark Disoway, P.E. for resolution. Do not proceed without clarification.

COPYRIGHTS AND PROPERTY RIGHTS:
Mark Disoway, P.E. hereby expressly reserves its common law copyrights and property right in these instruments of service. This document is not to be reproduced, altered or copied in any form or manner without first the express written permission and consent of Mark Disoway.

CERTIFICATION: I hereby certify that I have examined this plan, and that the applicable portions of the plan, relating to wind engineering comply with section F301.2.1, Florida building code residential 2004, to the best of my knowledge.

LIMITATION: This design is valid for one building, at specified location.

MARK DISOWAY
P.E. 53915
15 SEP 06
SEAL

Keen Richard

Spec House Lot 35
Wise Estates S/D

ADDRESS:
Lot 35 Wise Estates S/D
Columbia County, Florida

Mark Disoway P.E.
P.O. Box 868
Lake City, Florida 32056
Phone: (386) 754 - 5419
Fax: (386) 269 - 4871

PRINTED DATE:
September 15, 2006

DRAWN BY: Ben Sparks
CHECKED BY:

FINAL DATE:
15 / Sep / 06

JOB NUMBER:
609085

DRAWING NUMBER

S-3

OF 3 SHEETS