

March 15, 2021

Attention: Jim Zuber
All Seasons Planning, Inc.
P.O. Box 1530
Lake City, FL 32056

Reference: Engineering Services
Miscellaneous Design | 14.004
2nd Floor Buildout – Purlin Support Frame – Field Modifications
Belmont Academy
Lake City, Florida

Dear Mr. Zuber,

Complete Structural Consulting, Inc. was informed that the new roof purlin support beam connections needed to be modified to suit existing field conditions. We were provided with copies of inspection report #007-21, prepared by Weldtest Services and dated January 19, 2021.

Two separate field modifications were made:

Modification #1: Double angles were welded, instead of bolted per detail SC-1.

- This modification is acceptable, refer to enclosed detail FM-1.

Modification #2: A built-up plate assembly was used in lieu of double angles per detail SC-1.

- This modification is acceptable, refer to enclosed detail FM-2.

We have reviewed the modifications and confirm that all work completed is acceptable. We appreciate the opportunity to work with you on this project. If you need any further information or if we may of further assistance, please contact us.

Sincerely,



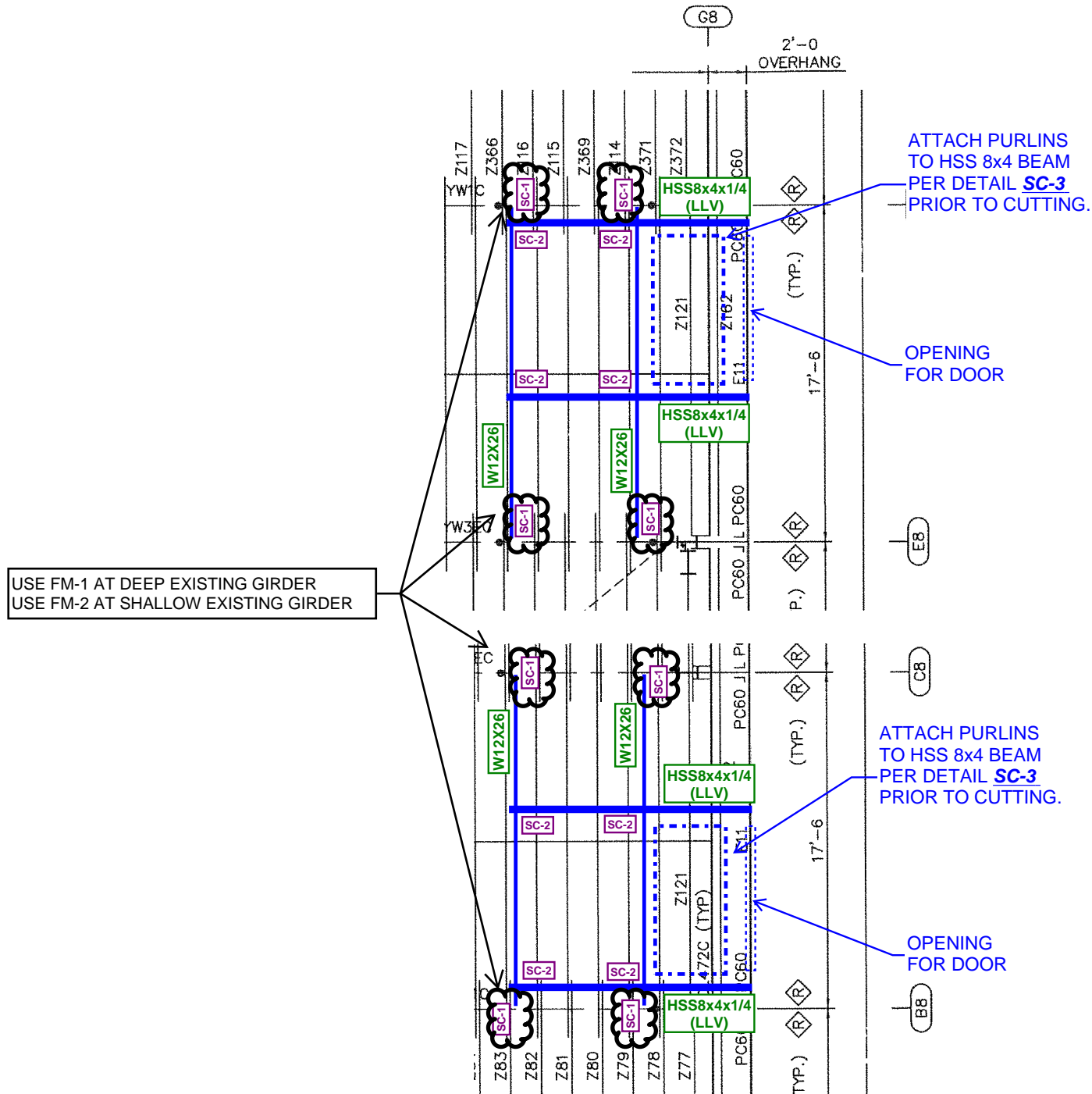
03-15-2021 // COA: 29951

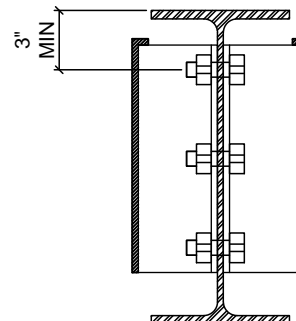
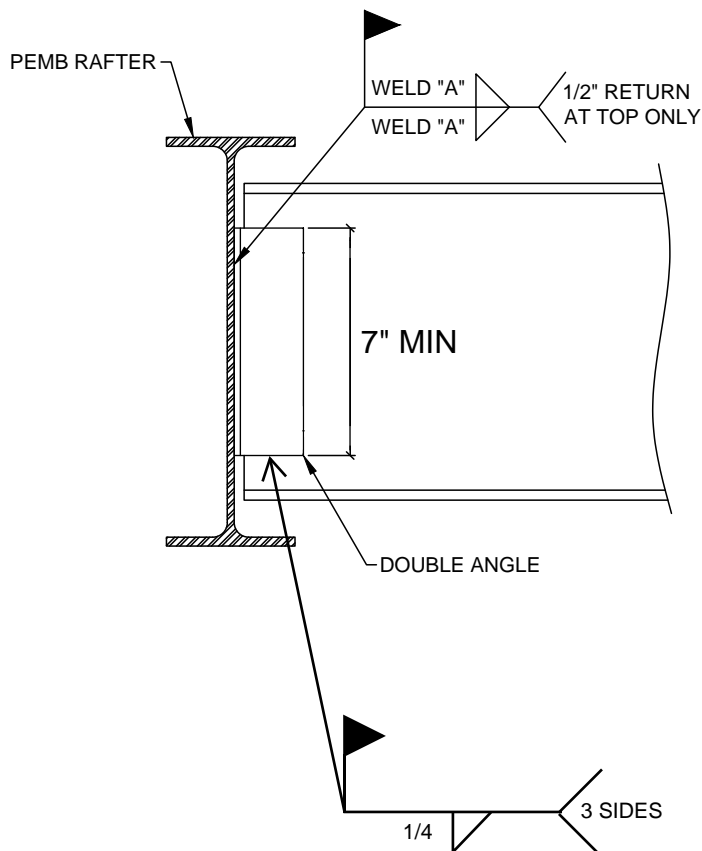
Kevin W. Beery
Complete Structural Consulting, Inc.

FIELD MODIFICATION KEY PLAN

REF. MESCO BUILDING SOLUTIONS
SHEET NUMBER: E3 OF 13

BELMONT ACADEMY
ROOF PURLIN MODIFICATIONS
03/15/2021





CONNECTION INFORMATION:
 ANGLE THICK. = 5/16" MIN.
 BOLTS = 3/4" DIA. A325N
 V, MIN = 1 1/4"
 WELD "A" = 1/4"

WF BM. TO PEMB RAFTER - FIELD MODIFICATION #1



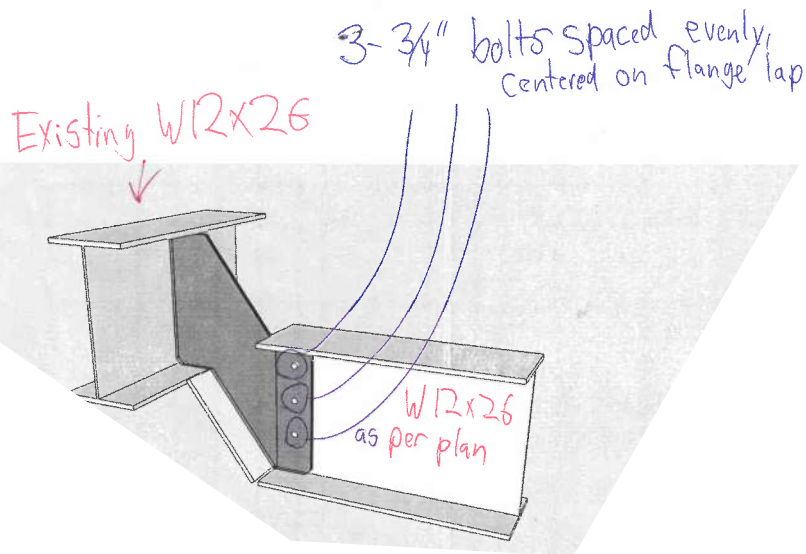
Complete Structural Consulting
 1330 NW 6th St. Suite B
 Gainesville, FL 32601
 (352) 505-0446
 info@completestructural.com

**BELMONT
 ACADEMY**
 LAKE CITY, FL

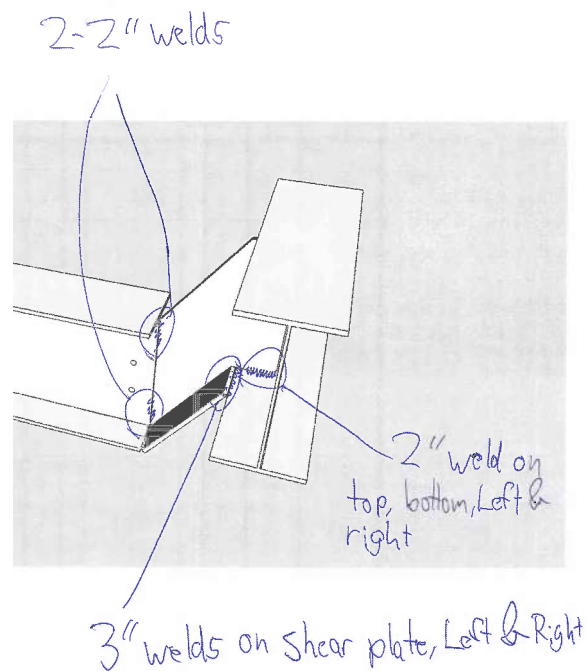
S H E E T

FM-1

| DRAWN | APM | REVISIONS |
|------------|------------|-----------|
| CHECKED | KWB | |
| DATE | 11/16/2020 | |
| JOB NUMBER | 14.004 | |

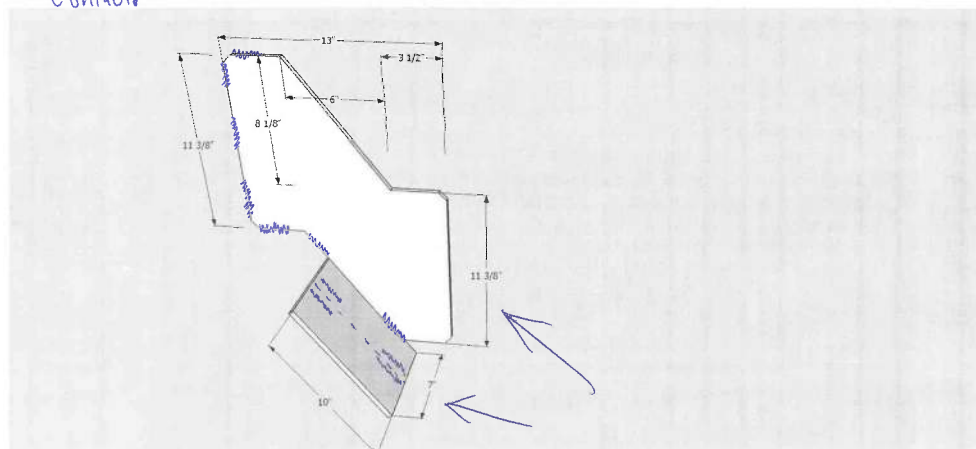


ISO VIEW #1



ISO VIEW #2

2" fillet welds in 5 places of contact to the existing I beam, Same Left and right, total of approximately 20" of weld, per bracket-to-beam contact.



8"-10" of fillet weld on Shear plate-to-bracket contact. All 3/8 thick A36 steel plate

PLATE AND WELD DETAILS

WF BM. TO PEMB RAFTER - FIELD MODIFICATION #2



Complete Structural Consulting
1330 NW 6th St. Suite B
Gainesville, FL 32601
(352) 505-0446
info@completestructural.com

**BELMONT
ACADEMY**
LAKE CITY, FL

S H E E T

FM-2

| DRAWN | APM | REVISIONS |
|------------|------------|-----------|
| CHECKED | KWB | |
| DATE | 11/16/2020 | |
| JOB NUMBER | 14.004 | |