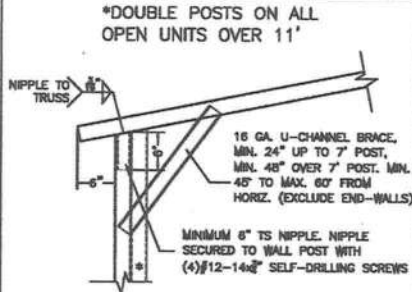
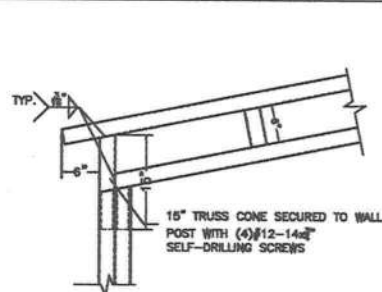


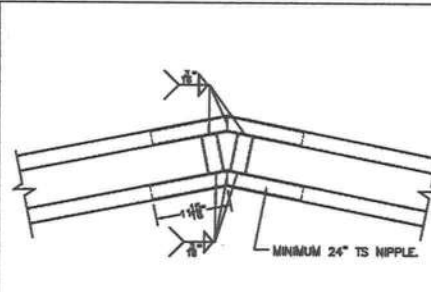
BOW RAFTER TO POST
CONNECTION DETAIL



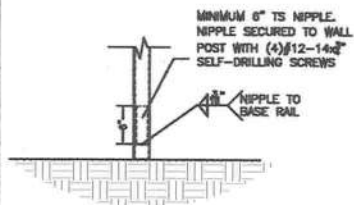
BOX EAVE RAFTER TO
POST CONNECTION DETAIL



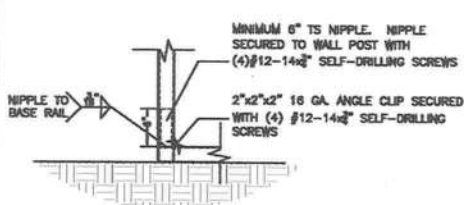
40' BOX EAVE RAFTER TO
POST CONNECTION DETAIL



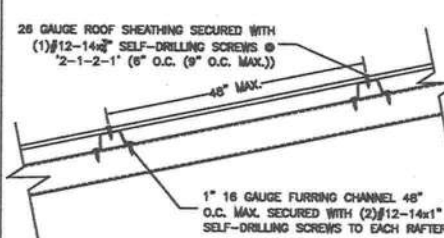
TRUSSED RAFTER
CONNECTION DETAIL



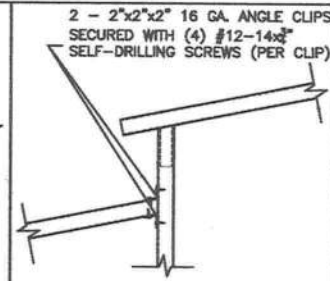
POST TO BASE RAIL
CONNECTION



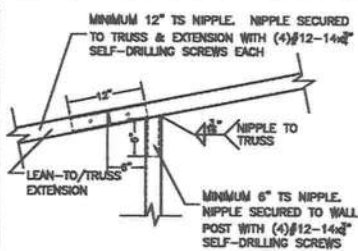
END POST TO BASE RAIL
CONNECTION



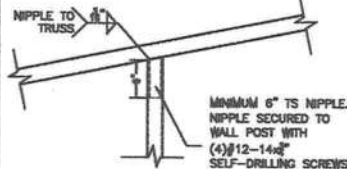
ROOF PANEL CONNECTION
VERTICAL SHEATHING OPTION



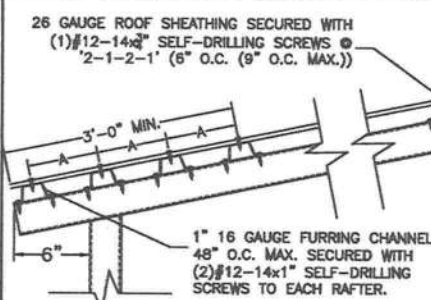
LEAN-TO TO TRUSS
CONNECTION



LEAN-TO TO TRUSS
CONNECTION



POST TO TRUSS
CONNECTION



EAVE & RIDGE REINFORCED ROOF PANEL CONNECTION
(RIDGE 3r AND EAVE 3e)

A Distance in inches		
mph	Exp. B	Exp. C
120	n/r	30"
150	n/r	30"
165	30"	24"
180	18"	9"



CODE INFORMATION

CODE VERSION	FBC 2020 7th Edition, ASCE-7-16
MANUFACTURER	CARPORTS ANYWHERE
BUILDING TYPE	UTILITY STRUCTURE
CONSTRUCTION TYPE	A-B
RISK CATEGORY	I
FIRE PROTECTION	NONE
FIRE SUPPRESSION SYSTEM	NONE
OCCUPANCY	UTILITY U
BASIC WIND SPEED	Var 120-160mph
EXPOSURE	B/C
ENCLOSURE	OPEN
INTERNAL PRESSURE COEFFICIENT	+/- 0.0
IMPORTANCE FACTOR	1.0
ROOF DEAD LOAD	10PSF
ROOF LIVE LOAD	20PSF OR 300lb POINT LOAD
FLOOR DEAD LOAD	10PSF
FLOOR LIVE LOAD	50PSF
WT RATING OF WALLS, FLOOR, ROOF	N/A
MODULES PER BUILDING	1
HURRICANE PROTECTION USAGE	NO
HURRICANE SHELTER USAGE	NO
SQUARE FOOTAGE	

REVISIONS

REV	DESCRIPTION	DATE	BY

Drawn by:	MTB
Date:	5/27/20
Location:	FLORIDA
Model:	OPEN GENERIC ENGINEERING
GENERAL NOTES 1. THIS BUILDING IS EXEMPT FROM THE FBC ENERGY CONSERVATION CODE PER SECTION C101.4.2. 2. ALL STEEL TUBING SHALL BE 60 KSI STEEL. 3. PLUMBING, ELECTRICAL, MECHANICAL, PROPERTY SET-BACKS, AND/OR OTHER LOCAL CODE REQUIREMENTS ARE THE RESPONSIBILITY OF THE OWNER. 4. ROOF AND WALL SHEATHING SECURED WITH #12-14x1" SELF-DRILLING SCREWS WITH SEAL WASHERS @ 6" O.C. MAX. 5. FIELD FRAMING CONNECTIONS SECURED WITH #12-14x1/4" SELF-DRILLING SCREWS. 6. ALL SHOP WELDING CONNECTIONS ARE TO BE WELDED, NO WELDING ON-SITE. ALL WELDING DONE IN SHOP BY A CERTIFIED WELDER. 7. CONCRETE EXPANSION ANCHORS ARE TO BE MINIMUM 1/2"x3", 2,000LB TENSILE STRENGTH. 8. 12 OR 14GA. FRAMING IS 2.0"x2.0" TUBE STEEL. NIPPLES ARE 2.0"x2.0" TUBE STEEL.	

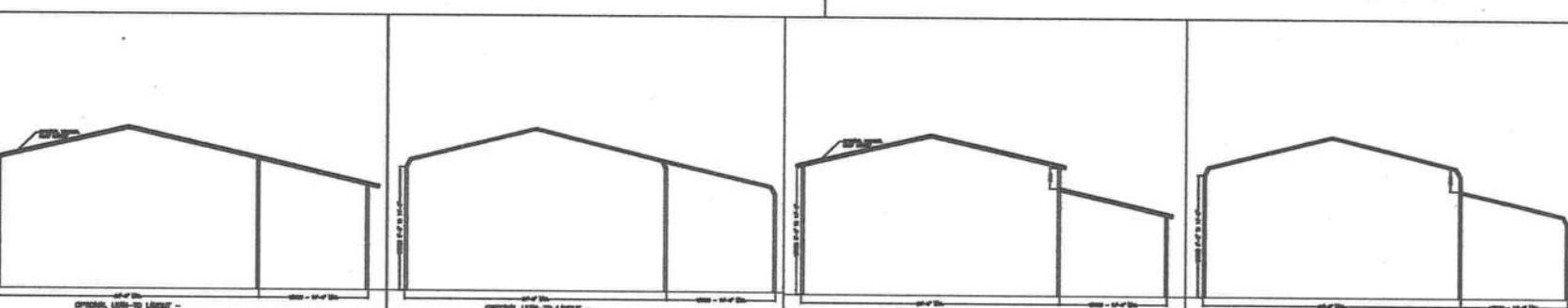
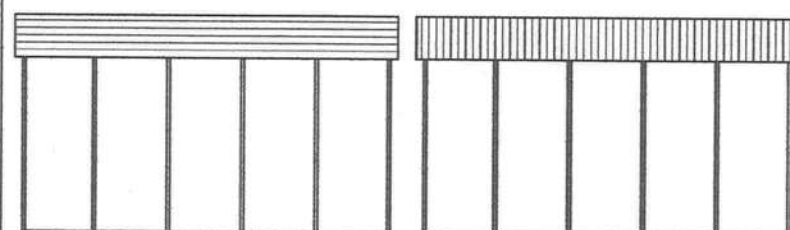
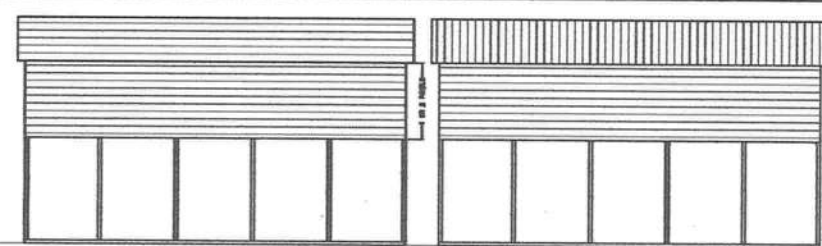
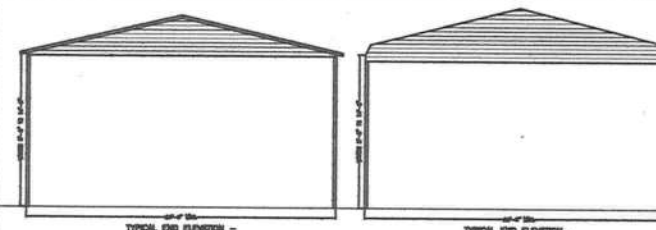
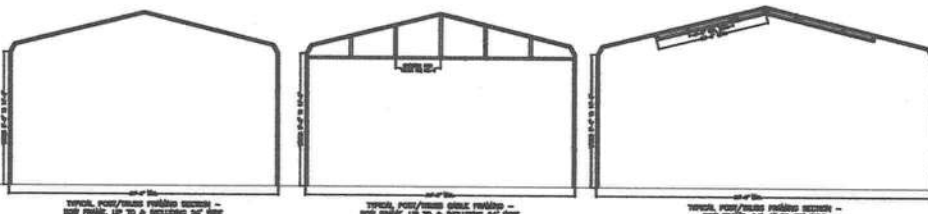
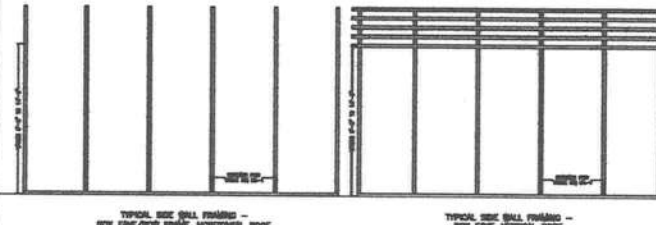
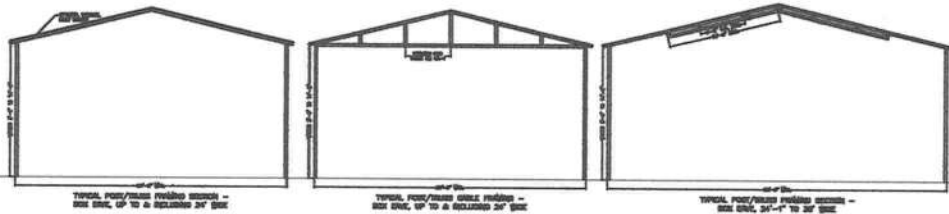
Matthew T. Boldwin P.E.
Florida License #044008

Sheet: CA-2 OF 3

PRINTED COPIES OF THIS DOCUMENT ARE NOT CONSIDERED SIGNED AND SEALED AND THE SHA AUTHENTICATION CODE MUST BE VERIFIED ON ANY ELECTRONIC COPIES

DETAILS

PRINTED COPIES OF THIS DOCUMENT ARE NOT CONSIDERED SIGNED AND SEALED AND THE SHA AUTHENTICATION CODE MUST BE VERIFIED ON ANY ELECTRONIC COPIES



CODE INFORMATION	
CODE VERSION	FBC 2020 7th Edition, ASCE-7-16
MANUFACTURER	CARPORTS ANYWHERE
BUILDING TYPE	UTILITY STRUCTURE
CONSTRUCTION TYPE	A-B
RISK CATEGORY	I
FIRE PROTECTION	NONE
FIRE SUPPRESSION SYSTEM	NONE
OCCUPANCY	UTILITY U
BASIC WIND SPEED	Max 120-130 mph
EXPOSURE	B/C
ENCLOSURE	OPEN
INTERNAL PRESSURE COEFFICIENT	+/- 0.8
IMPORTANCE FACTOR	1.0
ROOF DEAD LOAD	10PSF
ROOF LIVE LOAD	20PSF OR 30PSF POINT LOAD
FLOOR DEAD LOAD	10PSF
FLOOR LIVE LOAD	50PSF
"I" RATING OF WALLS, FLOOR, ROOF	N/A
MODULES PER BUILDING	1
HURRICANE PROTECTION USAGE	NO
HURRICANE SHELTER USAGE	NO
SQUARE FOOTAGE	

REVISIONS			
REV	DESCRIPTION	DATE	BY

Drawn By	MTB
Date	5/27/20
Location	FLORIDA
Model	OPEN GENERIC ENGINEERING

- GENERAL NOTES**
1. THIS BUILDING IS EXEMPT FROM THE FBC ENERGY CONSERVATION CODE PER SECTION 6101.4.2.
 2. ALL STEEL TUBING SHALL BE 60 KSI STEEL.
 3. PLUMBING, ELECTRICAL, BUSINESS/POSSES, PROPERTY SET-BACKS, AND/OR OTHER LOCAL CODE REQUIREMENTS ARE THE RESPONSIBILITY OF THE OWNER.
 4. ROOF AND WALL SHEATHING SECURED WITH #10-14x1" SELF-DRILLING SCREWS WITH SEAL WASHERS @ 6" O.C. MAX.
 5. FIELD FRAMING CONNECTIONS SECURED WITH #10-14x4" SELF-DRILLING SCREWS.
 6. ALL SHOP FRAMING CONNECTIONS ARE TO BE WELDED. NO BOLDING ON SITE. ALL WELDING DONE IN SHOP BY A CERTIFIED WELDER.
 7. CONCRETE EXPANSION ANCHORS ARE TO BE MINIMUM 1/2"x3", 2,000LB TENSILE STRENGTH.
 8. 12 OR 14GA FRAMING IS 2.07x2.07" TUBE STEEL. RIPPLES ARE 2.38"x2.38" TUBE STEEL.

TITLE: LAYOUT VIEWS

Matthew T. Boldwin P.E.
Florida License #54808

Sheet: CA-3 OF 3