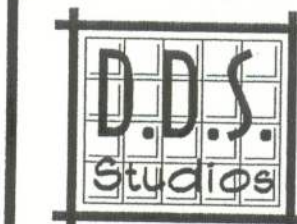


September 13, 2005



D.D.S. STUDIOS
P.O. Box 213
Lake City FL 32056
(386) 754-0191

THE THOMAS

LOT 15 WISE ESTATES

COPYRIGHT: 2000 DDS STUDIOS

OUR PLANS ARE DRAFTED FOR AVERAGE SITE CONDITIONS AND COMPLIANCE WITH APPLICABLE CODES IN LAKE CITY, FL. AT THE TIME THEY ARE DRAFTED. DUE TO VARYING STATE, LOCAL AND NATIONAL CODES, RULES AND REGULATIONS, DDS STUDIOS CANNOT WARRANT COMPLIANCE WITH ANY APPLICABLE STATE, LOCAL AND NATIONAL CODES IN YOUR AREA OR WITH YOUR PARTICULAR SITE CONDITIONS. IT IS THE RESPONSIBILITY OF THE PURCHASER AND/OR BUILDER TO SEE THAT THE STRUCTURE IS BUILT IN STRICT COMPLIANCE WITH ALL GOVERNING MUNICIPAL CODES (CITY, COUNTY, STATE AND FEDERAL), IF YOUR CITY OR STATE REQUIRES AN ENGINEER'S STAMP, YOU WILL NEED TO HAVE THAT DONE LOCALLY BY A QUALIFIED ARCHITECT OR ENGINEER.

FLOOR PLAN

TYPICAL WALL SECTION

SHEET NUMBER
2 of 3

All work shall comply with the standard building code, and all applicable local codes and ordinances.
Contractor shall verify all dimensions prior to commencing construction.

GAF-TIMBERLINE SHINGLES W/ 4-NAILS IN EACH SHINGLE STRIP ON 30-LB FELT PAPER OVER 7/16" ORIENTED STRAND BOARD ROOF SHEATHING FASTENED AS PER WINDLOAD ANALYSIS

FLASHING: 26 ga. GALVANIZED STEEL

PRE-ENGINEERED WOOD ROOF TRUSSES AT 24" O.C. (SELECT TRUSS CONNECTORS PER WINDLOAD ANALYSIS)

BLOW-IN INSULATION EQUAL TO R-30

(2) 2X4 SYP DOUBLE TOP PLATE
NOTE: SEAL ALL PENETRATIONS IN TOP PLATE AND FIRE STOP BLOCKING WITH CODE APPROVED SEALANT

2x8 P.T. FASCIA W/ 1X4 DRIP NAILER

ALUMINUM DRIP EDGE MOLDING, AND VENTED SOFFIT

INTERIOR FINISH - 1/2" GYPSUM WALLBOARD

2X4 #2 SPF PRECUT STUDS AT 16" O.C. WITH FULL-THICK FIBERGLASS INSULATION EQUAL TO R-11

EXTERIOR FINISH TO BE HARDI-PLANK LAP SIDING

7/16" O.S.B. WALL SHEATHING (BLOCK ALL EDGES) FASTENED AS PER WINDLOAD ANALYSIS

FLOORING AND INTERIOR TRIM PER SPECIFICATIONS

4" CONCRETE FLOOR SLAB REINFORCED WITH WELDED WIRE MESH EMBEDDED 2" IN SLAB ON 6 MIL POLY VAPOR BARRIER (6" LAPS SEALED WITH POLY TAPE) OVER COMPACTED FILL TREATED WITH TERMITICIDE

2 x 4 P.T. PINE SOLE PLATE ANCHORED WITH WITH ANCHOR BOLTS AS PER WINDLOAD ANALYSIS

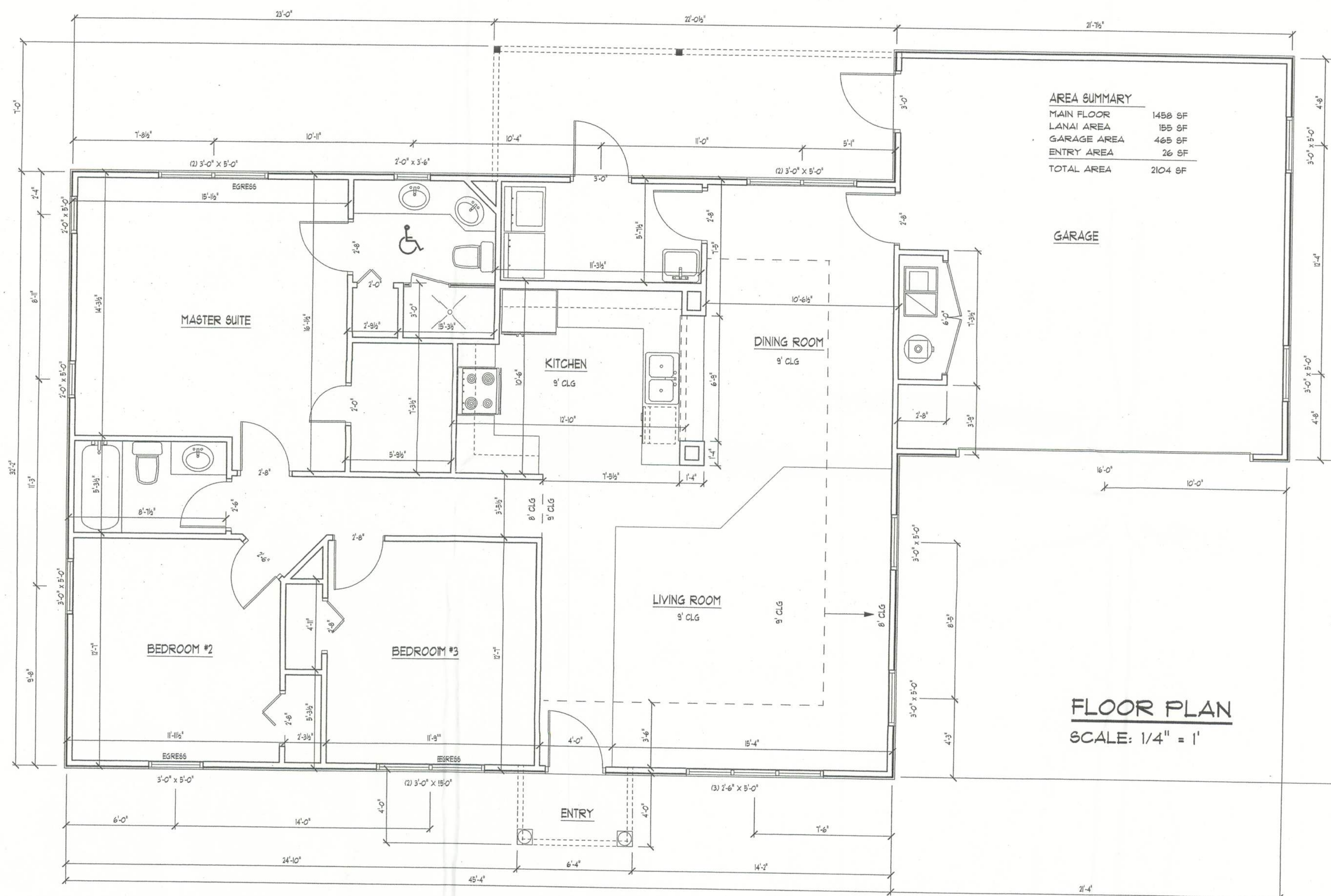
1-#5, CONTINUOUS, IN CONCRETE BOND BEAM AT SLAB EDGE INTERSECTION WITH STEMWALL

APPROXIMATE FINISH GRADE

SEE PLANS FOR WALL HEIGHTS

TYPICAL WALL SECTION

SCALE: 1" = 1'0"



Daniel Shaheen
Daniel Shaheen