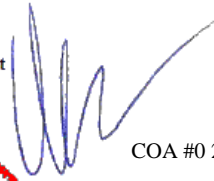


This document has been electronically signed using a Digital Signature. Printed copies without an original signature must be verified using the original electronic version.




Alpine, an ITW Company
155 Harlem Ave
North Building, 4th Floor
Glenview, IL 60025
Phone: (800)755-6001
www.alpineitw.com



COA #0 278

Florida Certificate of Product Approval #FL 1999
06/28/2023



| Site Information: | Page 1: |
|---------------------------------------|---------------------|
| Customer: W. B. Howland Company, Inc. | Job Number: 23-9303 |
| Job Description: Snider Addition | |
| Address: | |

| Job Engineering Criteria: |
|---|
| Design Code: FBC 7th Ed. 2020 Res. |
| IntelliVIEW Version: 22.02.00 through 23.01.01B |
| JRef #: 1XQW2150014 |
| Wind Standard: ASCE 7-16 Wind Speed (mph): 130 |
| Design Loading (psf): 40.00 |
| Building Type: Closed |

This package contains general notes pages, 10 truss drawing(s) and 5 detail(s).

| Item | Drawing Number | Truss |
|------|-------------------|-------|
| 1 | 179.23.1343.57090 | V04 |
| 3 | 179.23.1344.04647 | V06 |
| 5 | 179.23.1343.58283 | V05 |
| 7 | 179.23.1343.51090 | B01 |
| 9 | 179.23.1343.48877 | A03 |
| 11 | VAL180160118 | |
| 13 | A14015ENC160118 | |
| 15 | 160TL | |

| Item | Drawing Number | Truss |
|------|-------------------|-------|
| 2 | 179.23.1343.52363 | V01 |
| 4 | 179.23.1343.55920 | V03 |
| 6 | 179.23.1343.54343 | V02 |
| 8 | 179.23.1343.46643 | A02 |
| 10 | 179.23.1452.33743 | A01 |
| 12 | VALTN160118 | |
| 14 | GBLLETIN0118 | |
| | | |

General Notes

Truss Design Engineer Scope of Work, Design Assumptions and Design Responsibilities:

The design responsibilities assumed in the preparation of these design drawings are those specified in ANSI/TPI 1, Chapter 2; and the National Design Standard for Metal Plate Connected Wood Truss Construction, by the Truss Plate Institute. The truss component designs conform to the applicable provisions of ANSI/TPI 1 and NDS, the National Design Specification for Wood Construction by AWC. The truss component designs are based on the specified loading and dimension information furnished by others to the Truss Design Engineer. The Truss Design Engineer has no duty to independently verify the accuracy or completeness of the information provided by others and may rely on that information without liability. The responsibility for verification of that information remains with others neither employed nor controlled by the Truss Design Engineer. The Truss Design Engineer's seal and signature on the attached drawings, or cover page listing these drawings, indicates acceptance of professional engineering responsibility solely for the truss component designs and not for the technical information furnished by others which technical information and consequences thereof remain their sole responsibility.

The suitability and use of these drawings for any particular structure is the responsibility of the Building Designer in accordance with ANSI/TPI 1 Chapter 2. The Building Designer is responsible for determining that the dimensions and loads for each truss component match those required by the plans and by the actual use of the individual component, and for ascertaining that the loads shown on the drawings meet or exceed applicable building code requirements and any additional factors required in the particular application. Truss components using metal connector plates with integral teeth shall not be placed in environments that will cause the moisture content of the wood in which plates are embedded to exceed 19% and/or cause corrosion of connector plates and other metal fasteners.

The Truss Design Engineer shall not be responsible for items beyond the specific scope of the agreed contracted work set forth herein, including but not limited to: verifying the dimensions of the truss component, calculation of any of the truss component design loads, inspection of the truss components before or after installation, the design of temporary or permanent bracing and their attachment required in the roof and/or floor systems, the design of diaphragms or shear walls, the design of load transfer connections to and from diaphragms and shear walls, the design of load transfer to the foundation, the design of connections for truss components to their bearing supports, the design of the bearing supports, installation of the truss components, observation of the truss component installation process, review of truss assembly procedures, sequencing of the truss component installation, construction means and methods, site and/or worker safety in the installation of the truss components and/or its connections.

This document may be a high quality facsimile of the original engineering document which is a digitally signed electronic file with third party authentication. A wet or embossed seal copy of this engineering document is available upon request.

Temporary Lateral Restraint and Bracing:

Temporary lateral restraint and diagonal bracing shall be installed according to the provisions of BCSI chapters B1, B2, B7 and/or B10 (Building Component Safety Information, by TPI and SBCA), or as specified by the Building Designer or other Registered Design Professional. The required locations for lateral restraint and/or bracing depicted on these drawings are only for the permanent lateral support of the truss members to reduce buckling lengths, and do not apply to and may not be relied upon for the temporary stability of the truss components during their installation.

Permanent Lateral Restraint and Bracing:

The required locations for lateral restraint or bracing depicted on these drawings are for the permanent lateral support of the truss members to reduce buckling lengths. Permanent lateral support shall be installed according to the provisions of BCSI chapters B3, B7 and/or B10, or as specified by the Building Designer or other Registered Design Professional. These drawings do not depict or specify installation/erection bracing, wind bracing, portal bracing or similar building stability bracing which are parts of the overall building design to be specified, designed, and detailed by the Building Designer.

Connector Plate Information:

Alpine connector plates are made of ASTM A653 or ASTM A1063 galvanized steel with the following designations, gauges and grades: W=Wave, 20ga, grade 40; H=High Strength, 20ga, grade 60; S=Super Strength, 18ga, grade 60. Information on model code compliance is contained in the ICC Evaluation Service report ESR-1118, available on-line at www.icc-es.org.

Fire Retardant Treated Lumber:

Fire retardant treated lumber must be properly re-dried and maintained below 19% or less moisture level through all stages of construction and usage. Fire retardant treated lumber may be more brittle than untreated lumber. Special handling care must be taken to prevent breakage during all handling activities.

General Notes (continued)

Key to Terms:

Information provided on drawings reflects a summary of the pertinent information required for the truss design. Detailed information on load cases, reactions, member lengths, forces and members requiring permanent lateral support may be found in calculation sheets available upon written request.

BCDL = Bottom Chord standard design Dead Load in pounds per square foot.

BCLL = Bottom Chord standard design Live Load in pounds per square foot.

CL = Certified lumber.

Des Ld = total of TCLL, TCDL, BCLL and BCDL Design Load in pounds per square foot.

FRT = Fire Retardant Treated lumber.

FRT-DB = D-Blaze Fire Retardant Treated lumber.

FRT-DC = Dricon Fire Retardant Treated lumber.

FRT-FP = FirePRO Fire Retardant Treated lumber.

FRT-FL = FlamePRO Fire Retardant Treated lumber.

FRT-FT = FlameTech Fire Retardant Treated lumber.

FRT-PG = PYRO-GUARD Fire Retardant Treated lumber.

FRT-PR = ProWood Fire Retardant Treated lumber.

g = green lumber.

HORZ(LL) = maximum Horizontal panel point deflection due to Live Load, in inches.

HORZ(TL) = maximum Horizontal panel point long term deflection in inches, due to Total Load, including creep adjustment.

HPL = additional Horizontal Load added to a truss Piece in pounds per linear foot or pounds.

Ic = Incised lumber.

FJ = Finger Jointed lumber.

L/# = user specified divisor for limiting span/deflection ratio for evaluation of actual L/defl value.

L/defl = ratio of Length between bearings, in inches, divided by the vertical Deflection due to creep, in inches, at the referenced panel point. Reported as 999 if greater than or equal to 999.

Loc = Location, starting location of left end of bearing or panel point (joint) location of deflection.

Max BC CSI = Maximum bending and axial Combined Stress Index for Bottom Chords for all load cases.

Max TC CSI = Maximum bending and axial Combined Stress Index for Top Chords for all load cases.

Max Web CSI = Maximum bending and axial Combined Stress Index for Webs for all load cases.

NCBCLL = Non-Concurrent Bottom Chord design Live Load in pounds per square foot.

PL = additional Load applied at a user specified angle on a truss Piece in pounds per linear foot or pounds.

PLB = additional vertical load added to a Bottom chord Piece of a truss in pounds per linear foot or pounds

PLT = additional vertical load added to a Top chord Piece of a truss in pounds per linear foot or pounds.

PP = Panel Point.

R = maximum downward design Reaction, in pounds, from all specified gravity load cases, at the indicated location (Loc).

-R = maximum upward design Reaction, in pounds, from all specified gravity load cases, at the identified location (Loc).

Rh = maximum horizontal design Reaction in either direction, in pounds, from all specified gravity load cases, at the indicated location (Loc).

RL = maximum horizontal design Reaction in either direction, in pounds, from all specified non-gravity (wind or seismic) load cases, at the indicated location (Loc).

Rw = maximum downward design Reaction, in pounds, from all specified non-gravity (wind or seismic) load cases, at the identified location (Loc).

TCDL = Top Chord standard design Dead Load in pounds per square foot.

TCLL = Top Chord standard design Live Load in pounds per square foot.

U = maximum Upward design reaction, in pounds, from all specified non-gravity (wind or seismic) load cases, at the indicated location (Loc).

VERT(CL) = maximum Vertical panel point deflection in inches due to Live Load and Creep Component of Dead Load in inches.

VERT(CTL) = maximum Vertical panel point deflection ratios due to Live Load and Creep Component of Dead Load, and maximum long term Vertical panel point deflection in inches due to Total load, including creep adjustment.

VERT(LL) = maximum Vertical panel point deflection in inches due to Live Load.

VERT(TL) = maximum Vertical panel point long term deflection in inches due to Total load, including creep adjustment.

W = Width of non-hanger bearing, in inches.

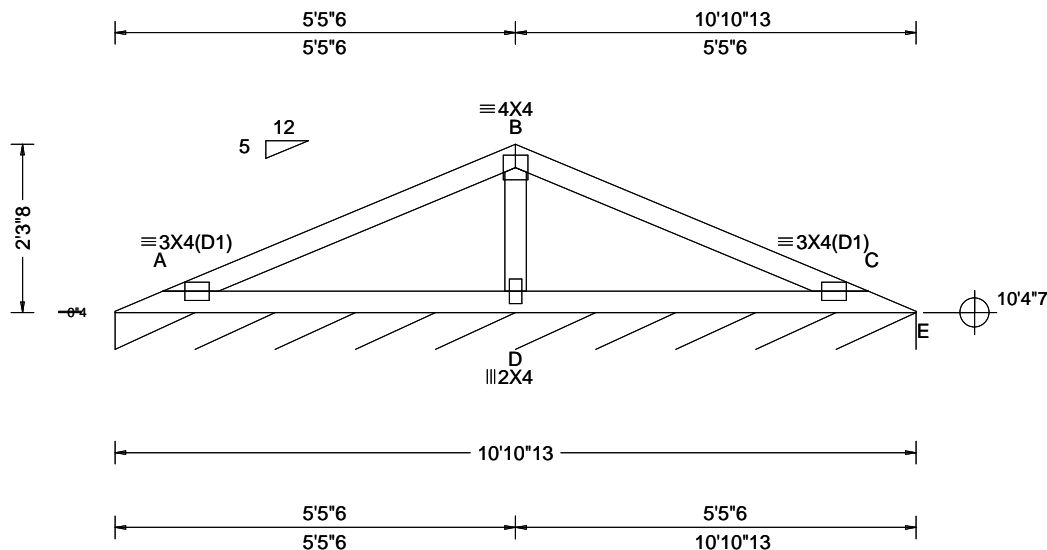
Refer to ASCE-7 for Wind and Seismic abbreviations.

Uppercase Acronyms not explained above are as defined in TPI 1.

References:

1. AWC: American Wood Council; 222 Catoctin Circle SE, Suite 201; Leesburg, VA 20175; www.awc.org.
2. ICC: International Code Council; www.iccsafe.org.
3. Alpine, a division of ITW Building Components Group Inc.: 155 Harlem Ave, North Building, 4th Floor, Glenview, IL 60025; www.alpineitw.com.
4. TPI: Truss Plate Institute, 2670 Crain Highway, Suite 203, Waldorf, MD 20601; www.tpinst.org.
5. SBCA: Wood Truss Council of America, 6300 Enterprise Lane, Madison, WI 53719; www.sbcacomponents.com.

| | | | |
|---------------------------|-------------------------|--|---|
| SEQN: 360354 FROM: CDM | VAL Ply: 1 Qty: 1 | Job Number: 23-9303 Snider Addition Truss Label: V04 | Cust: R 215 JRef: 1XQW2150014 T10 DrwNo: 179.23.1343.57090 GA / FV 06/28/2023 |
|---------------------------|-------------------------|--|---|



| Loading Criteria (psf) | Wind Criteria | Snow Criteria (Pg, Pf in PSF) | Defl/CSI Criteria | ▲ Maximum Reactions (lbs), or *=PLF |
|---|--|--|---|--|
| TCLL: 20.00 TCDL: 10.00 BCLL: 0.00 BCDL: 10.00 Des Ld: 40.00 NCBCLL: 10.00 Soffit: 2.00 Load Duration: 1.25 Spacing: 24.0 " | Wind Std: ASCE 7-16 Speed: 130 mph Enclosure: Closed Risk Category: II EXP: C Kzt: NA Mean Height: 15.00 ft TCDL: 5.0 psf BCDL: 5.0 psf MWFRS Parallel Dist: h to 2h C&C Dist a: 3.00 ft Loc. from endwall: not in 9.00 ft GCp: 0.18 Wind Duration: 1.60 | Pg: NA Ct: NA CAT: NA Pf: NA Ce: NA Lu: NA Cs: NA Snow Duration: NA Building Code: FBC 7th Ed. 2020 Res. TPI Std: 2014 Rep Fac: Yes FT/RT: 20(0)/10(0) Plate Type(s): WAVE | PP Deflection in loc L/defl L/# VERT(LL): 0.021 A 999 240 VERT(CL): 0.043 A 999 180 HORZ(LL): -0.007 C - - HORZ(TL): 0.015 C - - Creep Factor: 2.0 Max TC CSI: 0.376 Max BC CSI: 0.335 Max Web CSI: 0.109 VIEW Ver: 22.02.00.0914.11 | Gravity Non-Gravity Loc R+ / R- / Rh / Rw / U / RL E* 81 /- /- /40 /- /4 Wind reactions based on MWFRS E Brg Wid = 130 Min Req = - Bearing A is a rigid surface. Members not listed have forces less than 375# Maximum Top Chord Forces Per Ply (lbs) Chords Tens.Comp. Chords Tens. Comp. A - B 424 -211 B - C 424 -222 Maximum Web Forces Per Ply (lbs) Webs Tens.Comp. B - D 366 -541 |

Lumber

Top chord: 2x4 SP #2;
Bot chord: 2x4 SP #2;
Webs: 2x4 SP #3;

Wind

Wind loads based on MWFRS with additional C&C member design.
Wind loading based on both gable and hip roof types.

Additional Notes

See DWGS VALTN160118 and VAL180160118 for valley details.
The overall height of this truss excluding overhang is 2'-3"-8".



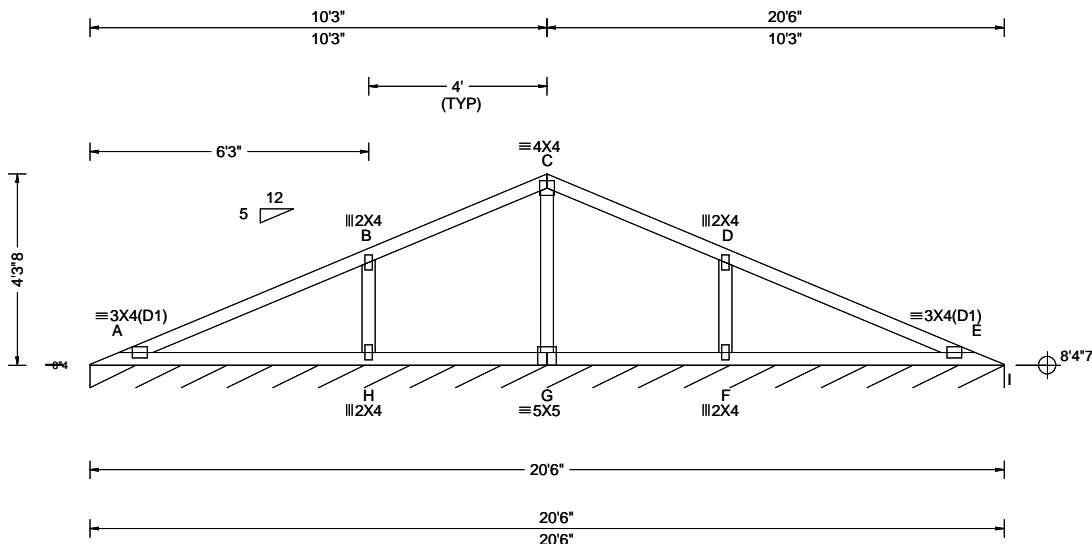
COA #0 278

Florida Certificate of Product Approval #FL 1999

****WARNING**** READ AND FOLLOW ALL NOTES ON THIS DRAWING!
****IMPORTANT**** FURNISH THIS DRAWING TO ALL CONTRACTORS INCLUDING THE INSTALLERS
Trusses require extreme care in fabricating, handling, shipping, installing and bracing. Refer to and follow the latest edition of BCSI (Building Component Safety Information, by TPI and SBCA) for safety practices prior to performing these functions. Installers shall provide temporary bracing per BCSI. Unless noted otherwise, top chord shall have properly attached structural sheathing and bottom chord shall have a properly attached rigid ceiling. Locations shown for permanent lateral restraint of webs shall have continuous lateral restraint (CLR), installed with diagonal bracing installed on the CLR per BCSI sections B3, B7, or B10, as applicable. Apply plates to each face of truss and position as shown above and on the Joint Details, unless noted otherwise. Refer to drawings 160A-Z for standard plate positions. Refer to job's General Notes page for additional information.
Alpine, a division of ITW Building Components Group Inc. shall not be responsible for any deviation from this drawing, any failure to build the truss in conformance with ANSI/TPI 1, or for handling, shipping, installation and bracing of trusses. A seal on this drawing or cover page listing this drawing, indicates acceptance of professional engineering responsibility solely for the design shown. The suitability and use of this drawing for any structure is the responsibility of the Building Designer per ANSI/TPI 1 Sec.2.
For more information see these web sites: Alpine: alpineitw.com; TPI: tpinst.org; SBCA: sbcacomponents.com; ICC: iccsafe.org; AWC: awc.org

ALPINE
AN ITW COMPANY
155 Harlem Ave
North Building, 4th Floor
Glenview, IL 60025

| | | | | |
|---------------------------|-----|------------------|--|--|
| SEQN: 360351 FROM: CDM | VAL | Ply: 1 Qty: 1 | Job Number: 23-9303 Snider Addition Truss Label: V01 | Cust: R 215 JRef: 1XQW2150014 T1 DrwNo: 179.23.1343.52363 GA / FV 06/28/2023 |
|---------------------------|-----|------------------|--|--|



| Loading Criteria (psf) | Wind Criteria | Snow Criteria (Pg,Pf in PSF) | Defl/CSI Criteria | ▲ Maximum Reactions (lbs), or *=PLF |
|---|---|---|--|---|
| TCLL: 20.00 TCDL: 10.00 BCLL: 0.00 BCDL: 10.00 Des Ld: 40.00 NCBCLL: 10.00 Soffit: 2.00 Load Duration: 1.25 Spacing: 24.0 " | Wind Std: ASCE 7-16 Speed: 130 mph Enclosure: Closed Risk Category: II EXP: C Kzt: NA Mean Height: 15.00 ft TCDL: 5.0 psf BCDL: 5.0 psf MWFRS Parallel Dist: h to 2h C&C Dist a: 3.00 ft Loc. from endwall: not in 9.00 ft GCpi: 0.18 Wind Duration: 1.60 | Pg: NA Ct: NA CAT: NA Pf: NA Ce: NA Lu: NA Cs: NA Snow Duration: NA Building Code: FBC 7th Ed. 2020 Res. TPI Std: 2014 Rep Fac: Yes FT/RT:20(0)/10(0) Plate Type(s): WAVE | PP Deflection in loc L/defl L/# VERT(LL): 0.029 A 999 240 VERT(CL): 0.059 A 999 180 HORZ(LL): 0.009 A - - HORZ(TL): 0.018 A - - Creep Factor: 2.0 Max TC CSI: 0.496 Max BC CSI: 0.301 Max Web CSI: 0.125 VIEW Ver: 22.02.00.0914.11 | Gravity Loc R+ / R- / Rh / Rw / U / RL Non-Gravity Loc R+ / R- / Rh / Rw / U / RL I* 82 /- /- /41 /1 /4 Wind reactions based on MWFRS I Brg Wid = 245 Min Req = - Bearing A is a rigid surface. Members not listed have forces less than 375# |

Lumber

Top chord: 2x4 SP #2;
Bot chord: 2x4 SP #2;
Webs: 2x4 SP #3;

Wind

Wind loads based on MWFRS with additional C&C member design.
Wind loading based on both gable and hip roof types.

Additional Notes

See DWGS VALTN160118 and VAL180160118 for valley details.
The overall height of this truss excluding overhang is 4'-3-8".



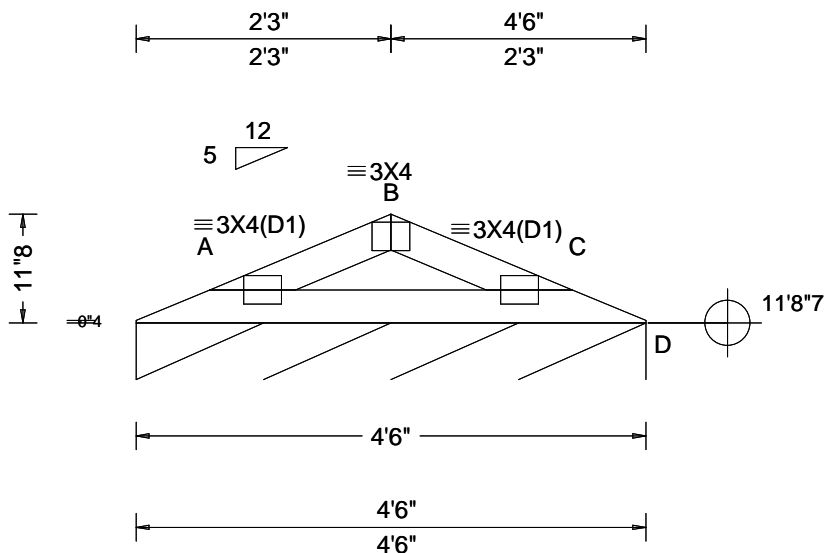
COA #0278

Florida Certificate of Product Approval #FL 1999

****WARNING**** READ AND FOLLOW ALL NOTES ON THIS DRAWING!
****IMPORTANT**** FURNISH THIS DRAWING TO ALL CONTRACTORS INCLUDING THE INSTALLERS
Trusses require extreme care in fabricating, handling, shipping, installing and bracing. Refer to and follow the latest edition of BCSI (Building Component Safety Information, by TPI and SBCA) for safety practices prior to performing these functions. Installers shall provide temporary bracing per BCSI. Unless noted otherwise, top chord shall have properly attached structural sheathing and bottom chord shall have a properly attached rigid ceiling. Locations shown for permanent lateral restraint of webs shall have continuous lateral restraint (CLR), installed with diagonal bracing installed on the CLR per BCSI sections B3, B7, or B10, as applicable. Apply plates to each face of truss and position as shown above and on the Joint Details, unless noted otherwise. Refer to drawings 160A-Z for standard plate positions. Refer to job's General Notes page for additional information.
Alpine, a division of ITW Building Components Group Inc. shall not be responsible for any deviation from this drawing, any failure to build the truss in conformance with ANSI/TPI 1, or for handling, shipping, installation and bracing of trusses. A seal on this drawing or cover page listing this drawing, indicates acceptance of professional engineering responsibility solely for the design shown. The suitability and use of this drawing for any structure is the responsibility of the Building Designer per ANSI/TPI 1 Sec.2.
For more information see these web sites: Alpine: alpineitw.com; TPI: tpinst.org; SBCA: sbcacomponents.com; ICC: iccsafe.org; AWC: awc.org

ALPINE
AN ITW COMPANY
155 Harlem Ave
North Building, 4th Floor
Glenview, IL 60025

| | | | |
|---------------------------|-------------------------|--|---|
| SEQN: 360356 FROM: CDM | VAL Ply: 1 Qty: 1 | Job Number: 23-9303 Snider Addition Truss Label: V06 | Cust: R 215 JRef: 1XQW2150014 T12 DrwNo: 179.23.1344.04647 GA / FV 06/28/2023 |
|---------------------------|-------------------------|--|---|



| Loading Criteria (psf) | Wind Criteria | Snow Criteria (Pg, Pf in PSF) | Defl/CSI Criteria | ▲ Maximum Reactions (lbs), or *=PLF |
|---|---|--|--|---|
| TCLL: 20.00 TCDL: 10.00 BCLL: 0.00 BCDL: 10.00 Des Ld: 40.00 NCBCLL: 10.00 Soffit: 2.00 Load Duration: 1.25 Spacing: 24.0 " | Wind Std: ASCE 7-16 Speed: 130 mph Enclosure: Closed Risk Category: II EXP: C Kzt: NA Mean Height: 15.00 ft TCDL: 5.0 psf BCDL: 5.0 psf MWFRS Parallel Dist: h to 2h C&C Dist a: 3.00 ft Loc. from endwall: not in 9.00 ft GCpi: 0.18 Wind Duration: 1.60 | Pg: NA Ct: NA CAT: NA Pf: NA Ce: NA Lu: NA Cs: NA Snow Duration: NA Building Code: FBC 7th Ed. 2020 Res. TPI Std: 2014 Rep Fac: Yes FT/RT: 20(0)/10(0) Plate Type(s): WAVE | PP Deflection in loc L/def L/# VERT(LL): 0.006 A 999 240 VERT(CL): 0.013 A 999 180 HORZ(LL): -0.002 A - - HORZ(TL): 0.004 A - - Creep Factor: 2.0 Max TC CSI: 0.097 Max BC CSI: 0.132 Max Web CSI: 0.000 VIEW Ver: 22.02.00.0914.11 | Gravity Non-Gravity Loc R+ / R- / Rh / Rw / U / RL D* 81 /- /- /36 /- /3 Wind reactions based on MWFRS D Brg Wid = 54.0 Min Req = - Bearing A is a rigid surface. Members not listed have forces less than 375# |

Lumber

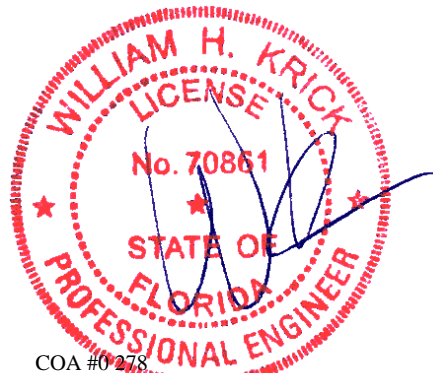
Top chord: 2x4 SP #2;
Bot chord: 2x4 SP #2;

Wind

Wind loads based on MWFRS with additional C&C member design.
Wind loading based on both gable and hip roof types.

Additional Notes

See DWGS VALTN160118 and VAL180160118 for valley details.
The overall height of this truss excluding overhang is 0-11-8.



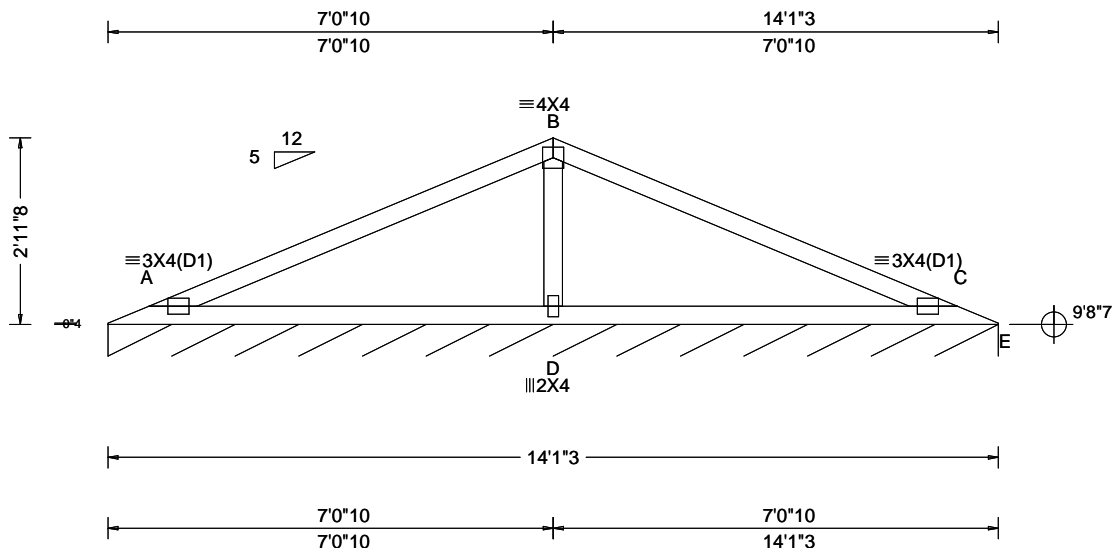
COA #0278

06/28/2023
Florida Certificate of Product Approval #FL 1999

****WARNING**** READ AND FOLLOW ALL NOTES ON THIS DRAWING!
****IMPORTANT**** FURNISH THIS DRAWING TO ALL CONTRACTORS INCLUDING THE INSTALLERS
Trusses require extreme care in fabricating, handling, shipping, installing and bracing. Refer to and follow the latest edition of BCSI (Building Component Safety Information, by TPI and SBCA) for safety practices prior to performing these functions. Installers shall provide temporary bracing per BCSI. Unless noted otherwise, top chord shall have properly attached structural sheathing and bottom chord shall have a properly attached rigid ceiling. Locations shown for permanent lateral restraint of webs shall have continuous lateral restraint (CLR), installed with diagonal bracing installed on the CLR per BCSI sections B3, B7, or B10, as applicable. Apply plates to each face of truss and position as shown above and on the Joint Details, unless noted otherwise. Refer to drawings 160A-Z for standard plate positions. Refer to job's General Notes page for additional information.
Alpine, a division of ITW Building Components Group Inc. shall not be responsible for any deviation from this drawing, any failure to build the truss in conformance with ANSI/TPI 1, or for handling, shipping, installation and bracing of trusses. A seal on this drawing or cover page listing this drawing, indicates acceptance of professional engineering responsibility solely for the design shown. The suitability and use of this drawing for any structure is the responsibility of the Building Designer per ANSI/TPI 1 Sec.2.
For more information see these web sites: Alpine: alpineitw.com; TPI: tpinst.org; SBCA: sbccomponents.com; ICC: iccsafe.org; AWC: awc.org

ALPINE
AN ITW COMPANY
155 Harlem Ave
North Building, 4th Floor
Glenview, IL 60025

| | | | | |
|---------------------------|-----|------------------|--|--|
| SEQN: 360353 FROM: CDM | VAL | Ply: 1 Qty: 1 | Job Number: 23-9303 Snider Addition Truss Label: V03 | Cust: R 215 JRef: 1XQW2150014 T9 DrwNo: 179.23.1343.55920 GA / FV 06/28/2023 |
|---------------------------|-----|------------------|--|--|



| Loading Criteria (psf) | Wind Criteria | Snow Criteria (Pg,Pf in PSF) | Defl/CSI Criteria | ▲ Maximum Reactions (lbs), or *=PLF |
|---|---|---|---|--|
| TCLL: 20.00 TCDL: 10.00 BCLL: 0.00 BCDL: 10.00 Des Ld: 40.00 NCBCLL: 10.00 Soffit: 2.00 Load Duration: 1.25 Spacing: 24.0 " | Wind Std: ASCE 7-16 Speed: 130 mph Enclosure: Closed Risk Category: II EXP: C Kzt: NA Mean Height: 15.00 ft TCDL: 5.0 psf BCDL: 5.0 psf MWFRS Parallel Dist: h to 2h C&C Dist a: 3.00 ft Loc. from endwall: not in 9.00 ft GCpi: 0.18 Wind Duration: 1.60 | Pg: NA Ct: NA CAT: NA Pf: NA Ce: NA Lu: NA Cs: NA Snow Duration: NA Building Code: FBC 7th Ed. 2020 Res. TPI Std: 2014 Rep Fac: Yes FT/RT:20(0)/10(0) Plate Type(s): WAVE | PP Deflection in loc L/defl L/# VERT(LL): 0.047 A 999 240 VERT(CL): 0.096 A 999 180 HORZ(LL): -0.016 C - - HORZ(TL): 0.033 C - - Creep Factor: 2.0 Max TC CSI: 0.692 Max BC CSI: 0.583 Max Web CSI: 0.181 VIEW Ver: 22.02.00.0914.11 | Gravity Non-Gravity Loc R+ / R- / Rh / Rw / U / RL E* 82 /- /- /41 /0 /4 Wind reactions based on MWFRS E Brg Wid = 169 Min Req = - Bearing A is a rigid surface. Members not listed have forces less than 375# Maximum Top Chord Forces Per Ply (lbs) Chords Tens.Comp. Chords Tens. Comp. A - B 711 -324 B - C 711 -333 Maximum Bot Chord Forces Per Ply (lbs) Chords Tens.Comp. Chords Tens. Comp. A - D 372 -597 D - C 372 -597 Maximum Web Forces Per Ply (lbs) Webs Tens.Comp. B - D 480 -834 |

Lumber

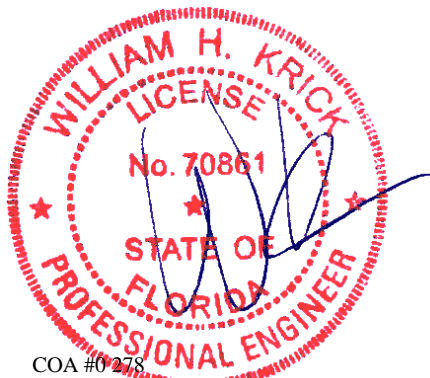
Top chord: 2x4 SP #2;
Bot chord: 2x4 SP #2;
Webs: 2x4 SP #3;

Wind

Wind loads based on MWFRS with additional C&C member design.
Wind loading based on both gable and hip roof types.

Additional Notes

See DWGS VALTN160118 and VAL180160118 for valley details.
The overall height of this truss excluding overhang is 2-11-8.



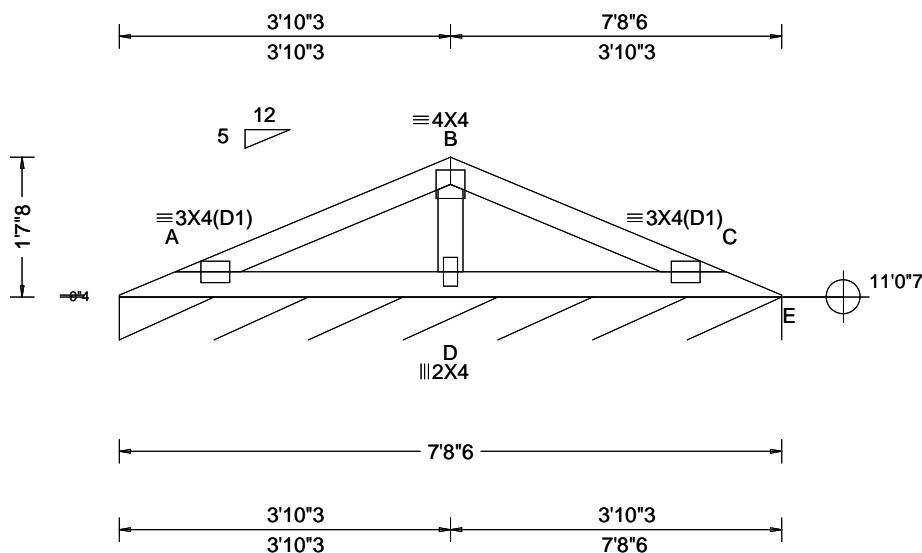
COA #0278

06/28/2023
Florida Certificate of Product Approval #FL 1999

****WARNING**** READ AND FOLLOW ALL NOTES ON THIS DRAWING!
****IMPORTANT**** FURNISH THIS DRAWING TO ALL CONTRACTORS INCLUDING THE INSTALLERS
Trusses require extreme care in fabricating, handling, shipping, installing and bracing. Refer to and follow the latest edition of BCSI (Building Component Safety Information, by TPI and SBCA) for safety practices prior to performing these functions. Installers shall provide temporary bracing per BCSI. Unless noted otherwise, top chord shall have properly attached structural sheathing and bottom chord shall have a properly attached rigid ceiling. Locations shown for permanent lateral restraint of webs shall have continuous lateral restraint (CLR), installed with diagonal bracing installed on the CLR per BCSI sections B3, B7, or B10, as applicable. Apply plates to each face of truss and position as shown above and on the Joint Details, unless noted otherwise. Refer to drawings 160A-Z for standard plate positions. Refer to job's General Notes page for additional information.
Alpine, a division of ITW Building Components Group Inc. shall not be responsible for any deviation from this drawing, any failure to build the truss in conformance with ANSI/TPI 1, or for handling, shipping, installation and bracing of trusses. A seal on this drawing or cover page listing this drawing, indicates acceptance of professional engineering responsibility solely for the design shown. The suitability and use of this drawing for any structure is the responsibility of the Building Designer per ANSI/TPI 1 Sec.2.
For more information see these web sites: Alpine: alpineitw.com; TPI: tpinst.org; SBCA: sbcacomponents.com; ICC: iccsafe.org; AWC: awc.org



| | | | |
|---------------------------|-------------------------|--|---|
| SEQN: 360355 FROM: CDM | VAL Ply: 1 Qty: 1 | Job Number: 23-9303 Snider Addition Truss Label: V05 | Cust: R 215 JRef: 1XQW2150014 T11 DrwNo: 179.23.1343.58283 GA / FV 06/28/2023 |
|---------------------------|-------------------------|--|---|



| Loading Criteria (psf) | Wind Criteria | Snow Criteria (Pg, Pf in PSF) | Defl/CSI Criteria | ▲ Maximum Reactions (lbs), or *=PLF |
|---|---|--|---|---|
| TCLL: 20.00 TCDL: 10.00 BCLL: 0.00 BCDL: 10.00 Des Ld: 40.00 NCBCLL: 10.00 Soffit: 2.00 Load Duration: 1.25 Spacing: 24.0 " | Wind Std: ASCE 7-16 Speed: 130 mph Enclosure: Closed Risk Category: II EXP: C Kzt: NA Mean Height: 15.00 ft TCDL: 5.0 psf BCDL: 5.0 psf MWFRS Parallel Dist: h to 2h C&C Dist a: 3.00 ft Loc. from endwall: not in 9.00 ft GCpi: 0.18 Wind Duration: 1.60 | Pg: NA Ct: NA CAT: NA Pf: NA Ce: NA Lu: NA Cs: NA Snow Duration: NA Building Code: FBC 7th Ed. 2020 Res. TPI Std: 2014 Rep Fac: Yes FT/RT: 20(0)/10(0) Plate Type(s): WAVE | PP Deflection in loc L/defl L/# VERT(LL): 0.007 A 999 240 VERT(CL): 0.014 A 999 180 HORZ(LL): -0.002 C - - HORZ(TL): 0.005 C - - Creep Factor: 2.0 Max TC CSI: 0.158 Max BC CSI: 0.153 Max Web CSI: 0.073 VIEW Ver: 22.02.00.0914.11 | Gravity Non-Gravity Loc R+ / R- / Rh / Rw / U / RL E* 81 /- /- /39 /- /4 Wind reactions based on MWFRS E Brg Wid = 92.4 Min Req = - Bearing A is a rigid surface. Members not listed have forces less than 375# |

Lumber

Top chord: 2x4 SP #2;
Bot chord: 2x4 SP #2;
Webs: 2x4 SP #3;

Wind

Wind loads based on MWFRS with additional C&C member design.
Wind loading based on both gable and hip roof types.

Additional Notes

See DWGS VALTN160118 and VAL180160118 for valley details.
The overall height of this truss excluding overhang is 1-7-8.



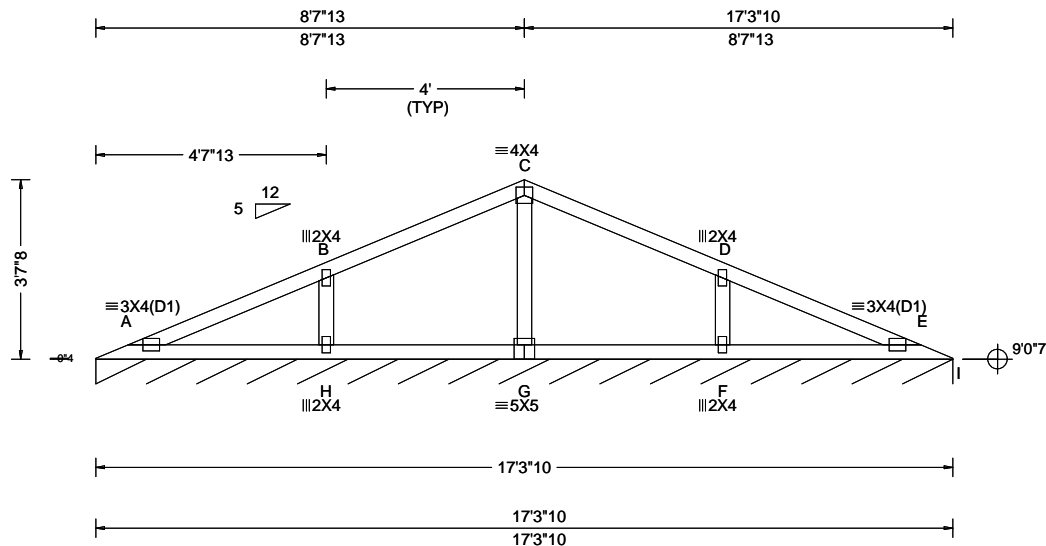
COA #0278

06/28/2023
Florida Certificate of Product Approval #FL 1999

****WARNING**** READ AND FOLLOW ALL NOTES ON THIS DRAWING!
****IMPORTANT**** FURNISH THIS DRAWING TO ALL CONTRACTORS INCLUDING THE INSTALLERS
Trusses require extreme care in fabricating, handling, shipping, installing and bracing. Refer to and follow the latest edition of BCSI (Building Component Safety Information, by TPI and SBCA) for safety practices prior to performing these functions. Installers shall provide temporary bracing per BCSI. Unless noted otherwise, top chord shall have properly attached structural sheathing and bottom chord shall have a properly attached rigid ceiling. Locations shown for permanent lateral restraint of webs shall have continuous lateral restraint (CLR), installed with diagonal bracing installed on the CLR per BCSI sections B3, B7, or B10, as applicable. Apply plates to each face of truss and position as shown above and on the Joint Details, unless noted otherwise. Refer to drawings 160A-Z for standard plate positions. Refer to job's General Notes page for additional information.
Alpine, a division of ITW Building Components Group Inc. shall not be responsible for any deviation from this drawing, any failure to build the truss in conformance with ANSI/TPI 1, or for handling, shipping, installation and bracing of trusses. A seal on this drawing or cover page listing this drawing, indicates acceptance of professional engineering responsibility solely for the design shown. The suitability and use of this drawing for any structure is the responsibility of the Building Designer per ANSI/TPI 1 Sec.2.
For more information see these web sites: Alpine: alpineitw.com; TPI: tpinst.org; SBCA: sbcacomponents.com; ICC: iccsafe.org; AWC: awc.org

ALPINE
AN ITW COMPANY
155 Harlem Ave
North Building, 4th Floor
Glenview, IL 60025

| | | | |
|---------------------------|-------------------------|--|--|
| SEQN: 360352 FROM: CDM | VAL Ply: 1 Qty: 1 | Job Number: 23-9303 Snider Addition Truss Label: V02 | Cust: R 215 JRef: 1XQW2150014 T6 DrwNo: 179.23.1343.54343 GA / FV 06/28/2023 |
|---------------------------|-------------------------|--|--|



| Loading Criteria (psf) | Wind Criteria | Snow Criteria (Pg,Pf in PSF) | Defl/CSI Criteria | ▲ Maximum Reactions (lbs), or *PLF |
|---|--|---|--|--|
| TCLL: 20.00 TCDL: 10.00 BCLL: 0.00 BCDL: 10.00 Des Ld: 40.00 NCBCLL: 10.00 Soffit: 2.00 Load Duration: 1.25 Spacing: 24.0 " | Wind Std: ASCE 7-16 Speed: 130 mph Enclosure: Closed Risk Category: II EXP: C Kzt: NA Mean Height: 15.00 ft TCDL: 5.0 psf BCDL: 5.0 psf MWFRS Parallel Dist: h to 2h C&C Dist a: 3.00 ft Loc. from endwall: not in 9.00 ft GCp: 0.18 Wind Duration: 1.60 | Pg: NA Ct: NA CAT: NA Pf: NA Ce: NA Lu: NA Cs: NA Snow Duration: NA Building Code: FBC 7th Ed. 2020 Res. TPI Std: 2014 Rep Fac: Yes FT/RT:20(0)/10(0) Plate Type(s): WAVE | PP Deflection in loc L/defl L/# VERT(LL): 0.010 A 999 240 VERT(CL): 0.021 A 999 180 HORZ(LL): 0.003 A - - HORZ(TL): 0.006 A - - Creep Factor: 2.0 Max TC CSI: 0.333 Max BC CSI: 0.178 Max Web CSI: 0.072 VIEW Ver: 22.02.00.0914.11 | Gravity Non-Gravity Loc R+ / R- / Rh / Rw / U / RL I* 82 /- /- /41 /1 /4 Wind reactions based on MWFRS I Brg Wid = 207 Min Req = - Bearing A is a rigid surface. Members not listed have forces less than 375# |

Lumber

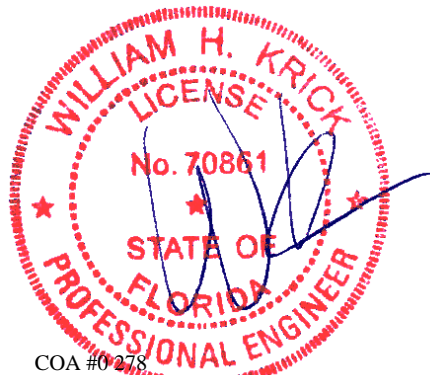
Top chord: 2x4 SP #2;
Bot chord: 2x4 SP #2;
Webs: 2x4 SP #3;

Wind

Wind loads based on MWFRS with additional C&C member design.
Wind loading based on both gable and hip roof types.

Additional Notes

See DWGS VALTN160118 and VAL180160118 for valley details.
The overall height of this truss excluding overhang is 3-7-8.



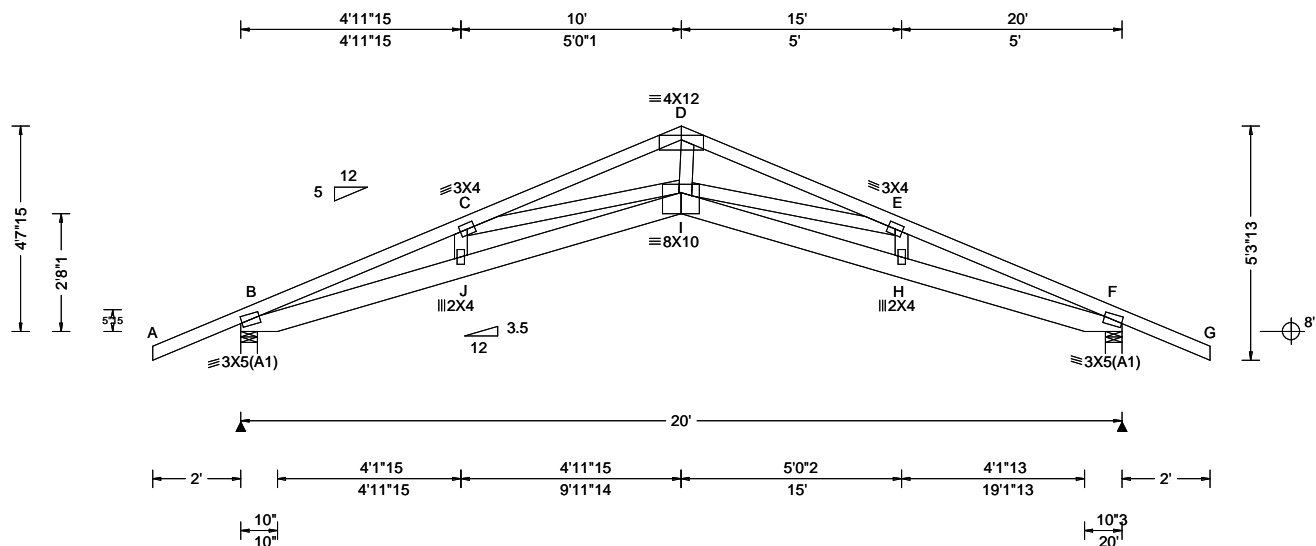
COA #0278

06/28/2023
Florida Certificate of Product Approval #FL 1999

****WARNING**** READ AND FOLLOW ALL NOTES ON THIS DRAWING!
****IMPORTANT**** FURNISH THIS DRAWING TO ALL CONTRACTORS INCLUDING THE INSTALLERS
Trusses require extreme care in fabricating, handling, shipping, installing and bracing. Refer to and follow the latest edition of BCSI (Building Component Safety Information, by TPI and SBCA) for safety practices prior to performing these functions. Installers shall provide temporary bracing per BCSI. Unless noted otherwise, top chord shall have properly attached structural sheathing and bottom chord shall have a properly attached rigid ceiling. Locations shown for permanent lateral restraint of webs shall have continuous lateral restraint (CLR), installed with diagonal bracing installed on the CLR per BCSI sections B3, B7, or B10, as applicable. Apply plates to each face of truss and position as shown above and on the Joint Details, unless noted otherwise. Refer to drawings 160A-Z for standard plate positions. Refer to job's General Notes page for additional information.
Alpine, a division of ITW Building Components Group Inc. shall not be responsible for any deviation from this drawing, any failure to build the truss in conformance with ANSI/TPI 1, or for handling, shipping, installation and bracing of trusses. A seal on this drawing or cover page listing this drawing, indicates acceptance of professional engineering responsibility solely for the design shown. The suitability and use of this drawing for any structure is the responsibility of the Building Designer per ANSI/TPI 1 Sec.2.
For more information see these web sites: Alpine: alpineitw.com; TPI: tpinst.org; SBCA: sbcacomponents.com; ICC: iccsafe.org; AWC: awc.org

ALPINE
AN ITW COMPANY
155 Harlem Ave
North Building, 4th Floor
Glenview, IL 60025

| | | | |
|---------------------------|---------------------------|--|--|
| SEQN: 360350 FROM: CDM | COMN Ply: 1 Qty: 10 | Job Number: 23-9303 Snider Addition Truss Label: B01 | Cust: R 215 JRef: 1XQW2150014 T4 DrwNo: 179.23.1343.51090 GA / FV 06/28/2023 |
|---------------------------|---------------------------|--|--|



| Loading Criteria (psf) | Wind Criteria | Snow Criteria (Pg, Pf in PSF) | Defl/CSI Criteria | ▲ Maximum Reactions (lbs) |
|---|--|--|--|---|
| TCLL: 20.00 TCDL: 10.00 BCLL: 0.00 BCDL: 10.00 Des Ld: 40.00 NCBCLL: 10.00 Soffit: 2.00 Load Duration: 1.25 Spacing: 24.0 " | Wind Std: ASCE 7-16 Speed: 130 mph Enclosure: Closed Risk Category: II EXP: C Kzt: NA Mean Height: 15.00 ft TCDL: 5.0 psf BCDL: 5.0 psf MWFRS Parallel Dist: 0 to h/2 C&C Dist a: 3.00 ft Loc. from endwall: Any GCp: 0.18 Wind Duration: 1.60 | Pg: NA Ct: NA CAT: NA Pf: NA Ce: NA Lu: NA Cs: NA Snow Duration: NA Building Code: FBC 7th Ed. 2020 Res. TPI Std: 2014 Rep Fac: Yes FT/RT: 20(0)/10(0) Plate Type(s): WAVE | PP Deflection in loc L/defl L/# VERT(LL): 0.237 I 996 240 VERT(CL): 0.473 I 500 180 HORZ(LL): 0.162 F - - HORZ(TL): 0.322 F - - Creep Factor: 2.0 Max TC CSI: 0.398 Max BC CSI: 0.840 Max Web CSI: 0.668 VIEW Ver: 22.02.00.0914.11 | Gravity Non-Gravity Loc R+ / R- / Rh / Rw / U / RL B 957 -/- /- /549 /184 /133 F 957 -/- /- /549 /184 -/ Wind reactions based on MWFRS B Brg Wid = 4.5 Min Req = 1.5 (Truss) F Brg Wid = 4.5 Min Req = 1.5 (Truss) Bearings B & F are a rigid surface. Members not listed have forces less than 375# Maximum Top Chord Forces Per Ply (lbs) Chords Tens.Comp. Chords Tens. Comp. B - C 1083 -2716 D - E 1059 -2816 C - D 1045 -2827 E - F 1061 -2696 |

Lumber

Top chord: 2x4 SP M-31;
Bot chord: 2x6 SP #2;
Webs: 2x4 SP #3;

Wind

Wind loads based on MWFRS with additional C&C member design.
Wind loading based on both gable and hip roof types.

Additional Notes

The overall height of this truss excluding overhang is 4'-7-15.

Maximum Bot Chord Forces Per Ply (lbs)

| Chords | Tens.Comp. | Chords | Tens. Comp. |
|--------|------------|--------|-------------|
| B - J | 2481 -908 | I - H | 2556 -917 |
| J - I | 2577 -953 | H - F | 2460 -872 |

Maximum Web Forces Per Ply (lbs)

| Webs | Tens.Comp. |
|-------|------------|
| I - D | 1752 -519 |



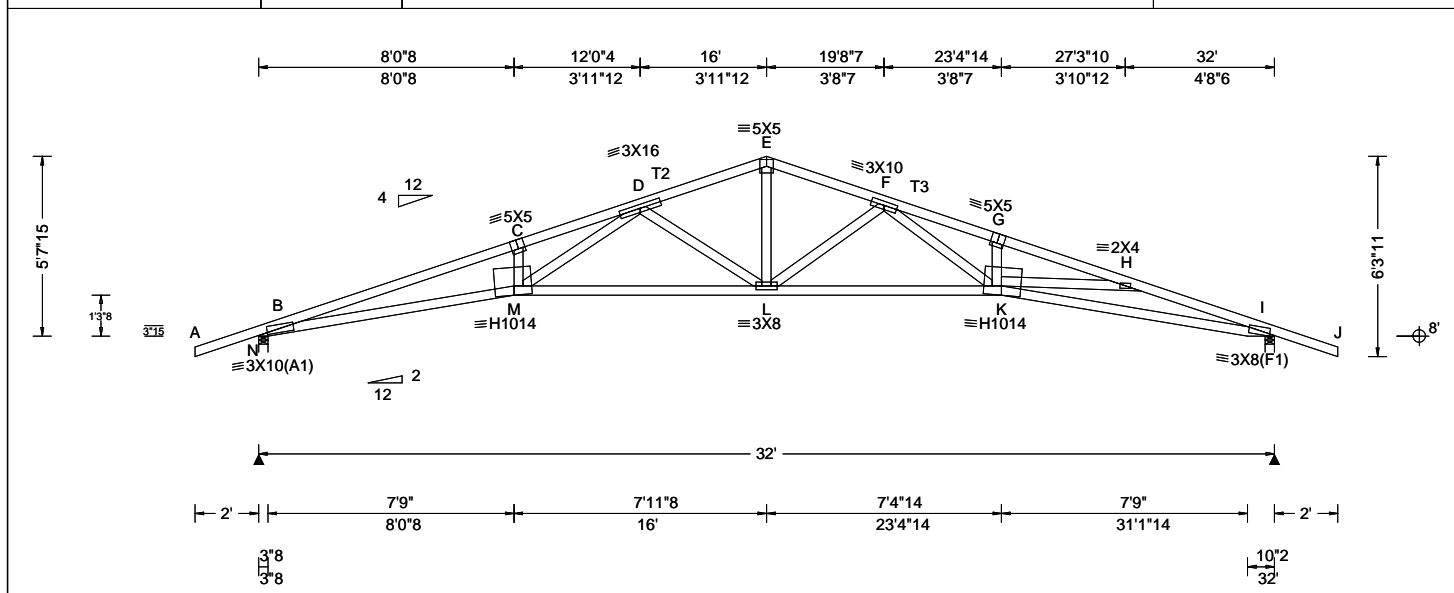
COA #0278

Florida Certificate of Product Approval #FL 1999

****WARNING**** READ AND FOLLOW ALL NOTES ON THIS DRAWING!
****IMPORTANT**** FURNISH THIS DRAWING TO ALL CONTRACTORS INCLUDING THE INSTALLERS
Trusses require extreme care in fabricating, handling, shipping, installing and bracing. Refer to and follow the latest edition of BCSI (Building Component Safety Information, by TPI and SBCA) for safety practices prior to performing these functions. Installers shall provide temporary bracing per BCSI. Unless noted otherwise, top chord shall have properly attached structural sheathing and bottom chord shall have a properly attached rigid ceiling. Locations shown for permanent lateral restraint of webs shall have continuous lateral restraint (CLR), installed with diagonal bracing installed on the CLR per BCSI sections B3, B7, or B10, as applicable. Apply plates to each face of truss and position as shown above and on the Joint Details, unless noted otherwise. Refer to drawings 160A-Z for standard plate positions. Refer to job's General Notes page for additional information.
Alpine, a division of ITW Building Components Group Inc. shall not be responsible for any deviation from this drawing, any failure to build the truss in conformance with ANSI/TPI 1, or for handling, shipping, installation and bracing of trusses. A seal on this drawing or cover page listing this drawing, indicates acceptance of professional engineering responsibility solely for the design shown. The suitability and use of this drawing for any structure is the responsibility of the Building Designer per ANSI/TPI 1 Sec.2.
For more information see these web sites: Alpine: alpineitw.com; TPI: tpinst.org; SBCA: sbcacomponents.com; ICC: iccsafe.org; AWC: awc.org

ALPINE
AN ITW COMPANY
155 Harlem Ave
North Building, 4th Floor
Glenview, IL 60025

| | | | |
|---------------------------|---------------------------|--|---|
| SEQN: 360349 FROM: CDM | COMN Ply: 1 Qty: 10 | Job Number: 23-9303 Snider Addition Truss Label: A02 | Cust: R 215 JRRef: 1XQW2150014 T2 DrwNo: 179.23.1343.46643 GA / FV 06/28/2023 |
|---------------------------|---------------------------|--|---|



| Loading Criteria (psf) | Wind Criteria | Snow Criteria (Pg, Pf in PSF) | Defl/CSI Criteria | ▲ Maximum Reactions (lbs) |
|---|--|--|--|---|
| TCLL: 20.00 TCDL: 10.00 BCLL: 0.00 BCDL: 10.00 Des Ld: 40.00 NCBCLL: 10.00 Soffit: 2.00 Load Duration: 1.25 Spacing: 24.0 " | Wind Std: ASCE 7-16 Speed: 130 mph Enclosure: Closed Risk Category: II EXP: C Kzt: NA Mean Height: 15.00 ft TCDL: 5.0 psf BCDL: 5.0 psf MWFRS Parallel Dist: 0 to h/2 C&C Dist a: 3.20 ft Loc. from endwall: Any GCp: 0.18 Wind Duration: 1.60 | Pg: NA Ct: NA CAT: NA Pf: NA Ce: NA Lu: NA Cs: NA Snow Duration: NA Building Code: FBC 7th Ed. 2020 Res. TPI Std: 2014 Rep Fac: Yes FT/RT: 20(0)/10(0) Plate Type(s): WAVE, HS | PP Deflection in loc L/defl L/# VERT(LL): 0.536 L 710 240 VERT(CL): 1.064 L 357 180 HORZ(LL): 0.248 I - - HORZ(TL): 0.493 I - - Creep Factor: 2.0 Max TC CSI: 0.622 Max BC CSI: 0.672 Max Web CSI: 0.843 VIEW Ver: 22.02.00.0914.11 | Gravity Loc R+ / R- / Rh / Rw / U / RL N 1428 - / - / /764 /274 /119 I 1430 - / - / /753 /280 - / - Wind reactions based on MWFRS N Brg Wid = 3.5 Min Req = 1.5 (Truss) I Brg Wid = 3.5 Min Req = 1.5 (Truss) Bearings N & I are a rigid surface. Members not listed have forces less than 375# Maximum Top Chord Forces Per Ply (lbs) Chords Tens.Comp. Chords Tens. Comp. |

Lumber
Top chord: 2x4 SP M-31; T2, T3 2x4 SP #2;
Bot chord: 2x4 SP M-31;
Webs: 2x4 SP #3;

Wind
Wind loads based on MWFRS with additional C&C member design.
Wind loading based on both gable and hip roof types.

Additional Notes
The overall height of this truss excluding overhang is 5'-7-15.

| Maximum Bot Chord Forces Per Ply (lbs) | | | |
|--|-------------|--------|-------------|
| Chords | Tens.Comp. | Chords | Tens. Comp. |
| B - M | 5311 - 1642 | L - K | 3345 - 1013 |
| M - L | 3431 - 1085 | K - I | 4844 - 1550 |

| Maximum Web Forces Per Ply (lbs) | | | |
|----------------------------------|------------|-------|-------------|
| Webs | Tens.Comp. | Webs | Tens. Comp. |
| M - D | 2213 - 708 | L - F | 437 - 1029 |
| D - L | 471 - 1097 | F - K | 1925 - 587 |
| E - L | 1447 - 435 | | |



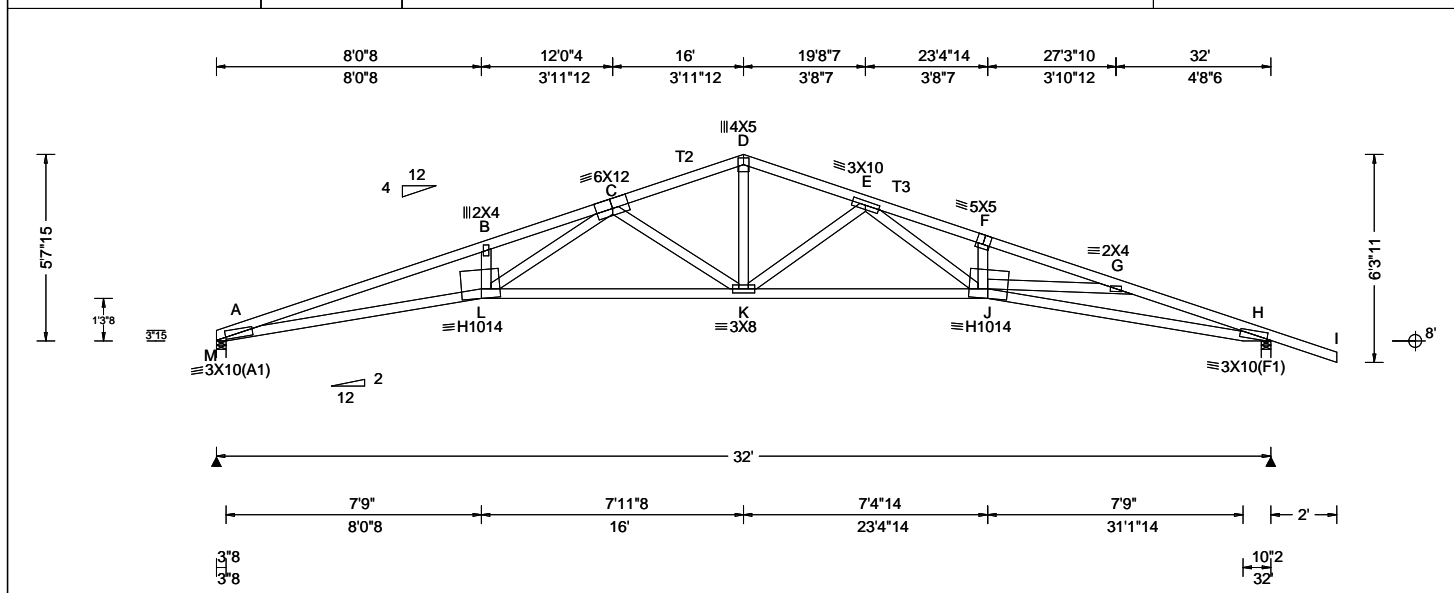
COA #0 278

06/28/2023
Florida Certificate of Product Approval #FL 1999

****WARNING**** READ AND FOLLOW ALL NOTES ON THIS DRAWING!
****IMPORTANT**** FURNISH THIS DRAWING TO ALL CONTRACTORS INCLUDING THE INSTALLERS
Trusses require extreme care in fabricating, handling, shipping, installing and bracing. Refer to and follow the latest edition of BCSI (Building Component Safety Information, by TPI and SBCA) for safety practices prior to performing these functions. Installers shall provide temporary bracing per BCSI. Unless noted otherwise, top chord shall have properly attached structural sheathing and bottom chord shall have a properly attached rigid ceiling. Locations shown for permanent lateral restraint of webs shall have continuous lateral restraint (CLR), installed with diagonal bracing installed on the CLR per BCSI sections B3, B7, or B10, as applicable. Apply plates to each face of truss and position as shown above and on the Joint Details, unless noted otherwise. Refer to drawings 160A-Z for standard plate positions. Refer to job's General Notes page for additional information.
Alpine, a division of ITW Building Components Group Inc. shall not be responsible for any deviation from this drawing, any failure to build the truss in conformance with ANSI/TPI 1, or for handling, shipping, installation and bracing of trusses. A seal on this drawing or cover page listing this drawing, indicates acceptance of professional engineering responsibility solely for the design shown. The suitability and use of this drawing for any structure is the responsibility of the Building Designer per ANSI/TPI 1 Sec.2.
For more information see these web sites: Alpine: alpineitw.com; TPI: tpinst.org; SBCA: sbcacomponents.com; ICC: iccsafe.org; AWC: awc.org



| | | | |
|---------------------------|--------------------------|--|---|
| SEQN: 360348 FROM: CDM | COMN Ply: 1 Qty: 3 | Job Number: 23-9303 Snider Addition Truss Label: A03 | Cust: R 215 JRRef: 1XQW2150014 T8 DrwNo: 179.23.1343.48877 GA / FV 06/28/2023 |
|---------------------------|--------------------------|--|---|



| Loading Criteria (psf) | Wind Criteria | Snow Criteria (Pg, Pf in PSF) | Defl/CSI Criteria | ▲ Maximum Reactions (lbs) |
|---|---|--|--|--|
| TCLL: 20.00 TCDL: 10.00 BCLL: 0.00 BCDL: 10.00 Des Ld: 40.00 NCBCLL: 10.00 Soffit: 2.00 Load Duration: 1.25 Spacing: 24.0 " | Wind Std: ASCE 7-16 Speed: 130 mph Enclosure: Closed Risk Category: II EXP: C Kzt: NA Mean Height: 15.00 ft TCDL: 5.0 psf BCDL: 5.0 psf MWFRS Parallel Dist: h to 2h C&C Dist a: 3.20 ft Loc. from endwall: not in 9.00 ft GCpi: 0.18 Wind Duration: 1.60 | Pg: NA Ct: NA CAT: NA Pf: NA Ce: NA Lu: NA Cs: NA Snow Duration: NA Building Code: FBC 7th Ed. 2020 Res. TPI Std: 2014 Rep Fac: Yes FT/RT: 20(0)/10(0) Plate Type(s): WAVE, HS | PP Deflection in loc L/defl L/# VERT(LL): 0.520 K 731 240 VERT(CL): 1.044 K 364 180 HORZ(LL): 0.243 H - - HORZ(TL): 0.488 H - - Creep Factor: 2.0 Max TC CSI: 0.625 Max BC CSI: 0.675 Max Web CSI: 0.884 VIEW Ver: 22.02.00.0914.11 | Gravity Non-Gravity Loc R+ / R- / Rh / Rw / U / RL M 1295 - / - / - / 669 / 55 / 107 H 1435 - / - / - / 753 / 104 / - Wind reactions based on MWFRS M Brg Wid = 3.5 Min Req = 1.5 (Truss) H Brg Wid = 3.5 Min Req = 1.5 (Truss) Bearings M & H are a rigid surface. Members not listed have forces less than 375# Maximum Top Chord Forces Per Ply (lbs) Chords Tens.Comp. Chords Tens. Comp. A - B 1688 - 5716 E - F 1581 - 5197 B - C 1787 - 5701 F - G 1503 - 5159 C - D 884 - 2720 G - H 1590 - 5157 D - E 879 - 2716 |

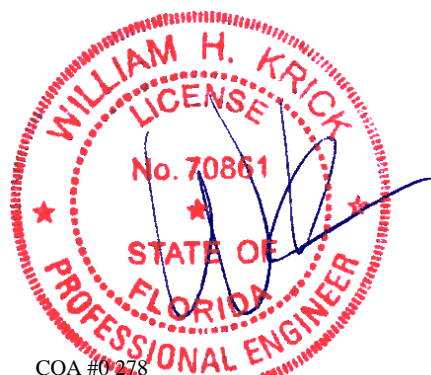
Lumber
Top chord: 2x4 SP M-31; T2, T3 2x4 SP #2;
Bot chord: 2x4 SP M-31;
Webs: 2x4 SP #3;

Wind
Wind loads based on MWFRS with additional C&C member design.
Wind loading based on both gable and hip roof types.

Additional Notes
The overall height of this truss excluding overhang is 5'-7-15.

| Maximum Bot Chord Forces Per Ply (lbs) | | | |
|--|-------------|--------|-------------|
| Chords | Tens.Comp. | Chords | Tens. Comp. |
| A - L | 5439 - 1507 | K - J | 3367 - 899 |
| L - K | 3468 - 923 | J - H | 4869 - 1432 |

| Maximum Web Forces Per Ply (lbs) | | | |
|----------------------------------|------------|-------|-------------|
| Webs | Tens.Comp. | Webs | Tens. Comp. |
| L - C | 2322 - 697 | K - E | 391 - 1031 |
| C - K | 426 - 1118 | E - J | 1934 - 521 |
| D - K | 1456 - 398 | | |



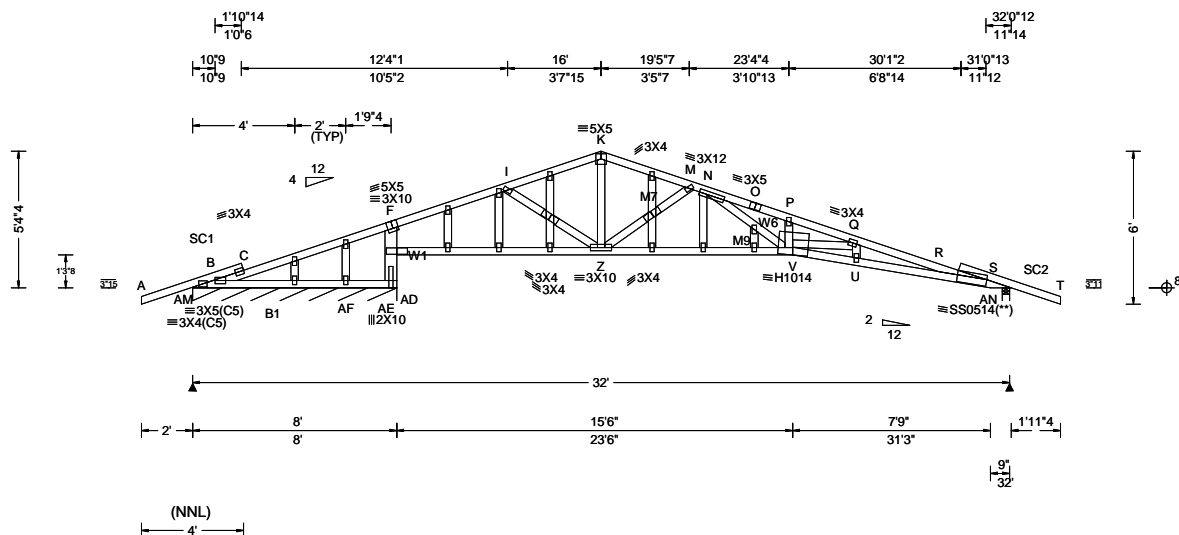
COA #0278

06/28/2023
Florida Certificate of Product Approval #FL 1999

****WARNING**** READ AND FOLLOW ALL NOTES ON THIS DRAWING!
****IMPORTANT**** FURNISH THIS DRAWING TO ALL CONTRACTORS INCLUDING THE INSTALLERS
Trusses require extreme care in fabricating, handling, shipping, installing and bracing. Refer to and follow the latest edition of BCSI (Building Component Safety Information, by TPI and SBCA) for safety practices prior to performing these functions. Installers shall provide temporary bracing per BCSI. Unless noted otherwise, top chord shall have properly attached structural sheathing and bottom chord shall have a properly attached rigid ceiling. Locations shown for permanent lateral restraint of webs shall have continuous lateral restraint (CLR), installed with diagonal bracing installed on the CLR per BCSI sections B3, B7, or B10, as applicable. Apply plates to each face of truss and position as shown above and on the Joint Details, unless noted otherwise. Refer to drawings 160A-Z for standard plate positions. Refer to job's General Notes page for additional information.
Alpine, a division of ITW Building Components Group Inc. shall not be responsible for any deviation from this drawing, any failure to build the truss in conformance with ANSI/TPI 1, or for handling, shipping, installation and bracing of trusses. A seal on this drawing or cover page listing this drawing, indicates acceptance of professional engineering responsibility solely for the design shown. The suitability and use of this drawing for any structure is the responsibility of the Building Designer per ANSI/TPI 1 Sec.2.
For more information see these web sites: Alpine: alpineitw.com; TPI: tpinst.org; SBCA: sbcacomponents.com; ICC: iccsafe.org; AWC: awc.org



| | | | | |
|-------------------------|----------------|------------------|--|---|
| SEQN: 3496 FROM: CDM | GABL Qty: 1 | Ply: 1 Qty: 1 | Job Number: 23-9303 Snider Addition Truss Label: A01 | Cust: R 215 JRef: 1XQW2150014 T17 DrwNo: 179.23.1452.33743 GA / FV 06/28/2023 |
|-------------------------|----------------|------------------|--|---|



| Loading Criteria (psf) | Wind Criteria | Snow Criteria (Pg, Pf in PSF) | Defl/CSI Criteria | ▲ Maximum Reactions (lbs), or *PLF |
|---|---|--|--|--|
| TCLL: 20.00 TCDL: 10.00 BCLL: 0.00 BCDL: 10.00 Des Ld: 40.00 NCBCLL: 10.00 Soffit: 2.00 Load Duration: 1.25 Spacing: 24.0 " | Wind Std: ASCE 7-16 Speed: 130 mph Enclosure: Closed Risk Category: II EXP: C Kzt: NA Mean Height: 15.00 ft TCDL: 5.0 psf BCDL: 5.0 psf MWFRS Parallel Dist: 0 to h/2 C&C Dist a: 3.20 ft Loc. from endwall: Any GCpi: 0.18 Wind Duration: 1.60 | Pg: NA Ct: NA CAT: NA Pf: NA Ce: NA Lu: NA Cs: NA Snow Duration: NA Building Code: FBC 7th Ed. 2020 Res. TPI Std: 2014 Rep Fac: Yes FT/RT: 20(0)/10(0) Plate Type(s): WAVE, HS, 18SS | PP Deflection in loc L/def L/# VERT(LL): 0.461 P 626 240 VERT(CL): 0.913 P 316 180 HORZ(LL): 0.134 S - - HORZ(TL): 0.266 S - - Creep Factor: 2.0 Max TC CSI: 0.753 Max BC CSI: 0.664 Max Web CSI: 0.648 VIEW Ver: 23.01.01B.0621.10 | Gravity Loc R+ / R- / Rh Non-Gravity / Rw / U / RL AM*210 - / - /113 /39 /15 AN 1168 - / - /648 /231 - /- AF - /231 Wind reactions based on MWFRS AM Brg Wid = 96.0 Min Req = - AN Brg Wid = 3.5 Min Req = 1.5 (Truss) Bearings AM & AN are a rigid surface. Members not listed have forces less than 375# Maximum Top Chord Forces Per Ply (lbs) Chords Tens.Comp. Chords Tens. Comp. |

Lumber

Top chord: 2x4 SP M-31; SC2 2x4 SP #2;
Bot chord: 2x4 SP M-31; B1 2x4 SP #2;
Webs: 2x4 SP #3; W1 2x6 SP 2400f-2.0E; W6,
M7 2x4 SP #2; M9 2x4 SP M-31;
Stack Chord: SC1 2x4 SP #2;

Plating Notes

All plates are 2X4 except as noted.

(**) 1 plate(s) require special positioning. Refer to scaled plate plot details for special positioning requirements.

Loading

Gable end supports 8" max rake overhang. Top chord must not be cut or notched.

Wind

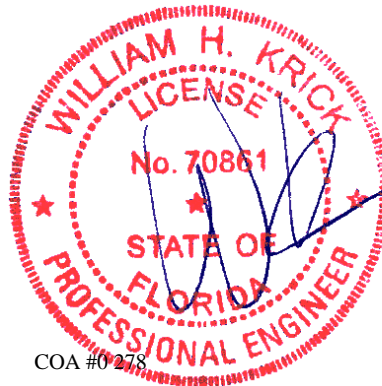
Wind loads based on MWFRS with additional C&C member design.

Wind loading based on both gable and hip roof types.

Additional Notes

See DWGS A14015ENC160118 & GBLLETIN0118 for gable wind bracing and other requirements.

Stacked top chord must NOT be notched or cut in area (NNL). Dropped top chord braced at 24" oc intervals. Attach stacked top chord (SC) to dropped top chord in notchable area using 3x4 tie-plates 24" oc. Center plate on stacked/dropped chord interface, plate length perpendicular to chord length. Splice top chord in notchable area using 3x6.



COA #0 278

06/28/2023 Florida Certificate of Product Approval #FL 1999

****WARNING**** READ AND FOLLOW ALL NOTES ON THIS DRAWING!
****IMPORTANT**** FURNISH THIS DRAWING TO ALL CONTRACTORS INCLUDING THE INSTALLERS
Trusses require extreme care in fabricating, handling, shipping, installing and bracing. Refer to and follow the latest edition of BCSI (Building Component Safety Information, by TPI and SBCA) for safety practices prior to performing these functions. Installers shall provide temporary bracing per BCSI. Unless noted otherwise, top chord shall have properly attached structural sheathing and bottom chord shall have a properly attached rigid ceiling. Locations shown for permanent lateral restraint of webs shall have continuous lateral restraint (CLR), installed with diagonal bracing installed on the CLR per BCSI sections B3, B7, or B10, as applicable. Apply plates to each face of truss and position as shown above and on the Joint Details, unless noted otherwise. Refer to drawings 160A-Z for standard plate positions. Refer to job's General Notes page for additional information.
Alpine, a division of ITW Building Components Group Inc. shall not be responsible for any deviation from this drawing, any failure to build the truss in conformance with ANSI/TPI 1, or for handling, shipping, installation and bracing of trusses. A seal on this drawing or cover page listing this drawing, indicates acceptance of professional engineering responsibility solely for the design shown. The suitability and use of this drawing for any structure is the responsibility of the Building Designer per ANSI/TPI 1 Sec.2.
For more information see these web sites: Alpine: alpineitw.com; TPI: tpinst.org; SBCA: sbcacomponents.com; ICC: iccsafe.org; AWC: awc.org

ALPINE
AN ITW COMPANY
155 Harlem Ave
North Building, 4th Floor
Glenview, IL 60025

Valley Detail - ASCE 7-16: 180 mph, 30' Mean Height, Partially Enclosed, Exp. C, Kzt=1.00

Top Chord 2x4 SP #2N, SPF #1/#2, DF-L #2 or better.
 Bot Chord 2x4 SP #2N or SPF #1/#2 or better.
 Webs 2x4 SP #3, SPF #1/#2, DF-L #2 or better.

**** Attach each valley to every supporting truss with:**
 535# connection or with (1) Simpson H2.5A or
 equivalent connector for
 ASCE 7-16 180 mph. 30' Mean Height, Part. Enc.
 Building, Exp. C, Wind TC DL=5 psf, Kzt = 1.00
 Or
 ASCE 7-16 160 mph. 30' Mean Height, Part. Enc.
 Building, Exp. D, Wind TC DL=5 psf, Kzt = 1.00

Bottom chord may be square or pitched cut
 as shown.

Valleys short enough to be cut as solid triangular
 members from a single 2x6, or larger as required,
 shall be permitted in lieu of fabricating from
 separate 2x4 members.

All plates shown are Alpine Wave Plates.

Unless specified otherwise on engineer's sealed design, for vertical
 valley webs taller than 7'-9" apply 2x4 "T" reinforcement, 80% length of
 web, same species and grade or better, attached with 10d box
 (0.128" x 3.0") nails at 6" o.c. In lieu of "T" reinforcement, 2x4 Continuous
 Lateral Restraint applied at mid-length of web is permitted with diagonal
 bracing as shown in DRWG BRCLBANC1014.

Top chord of truss beneath valley set must be braced with:
 properly attached, rated sheathing applied prior to valley truss
 installation.

Or

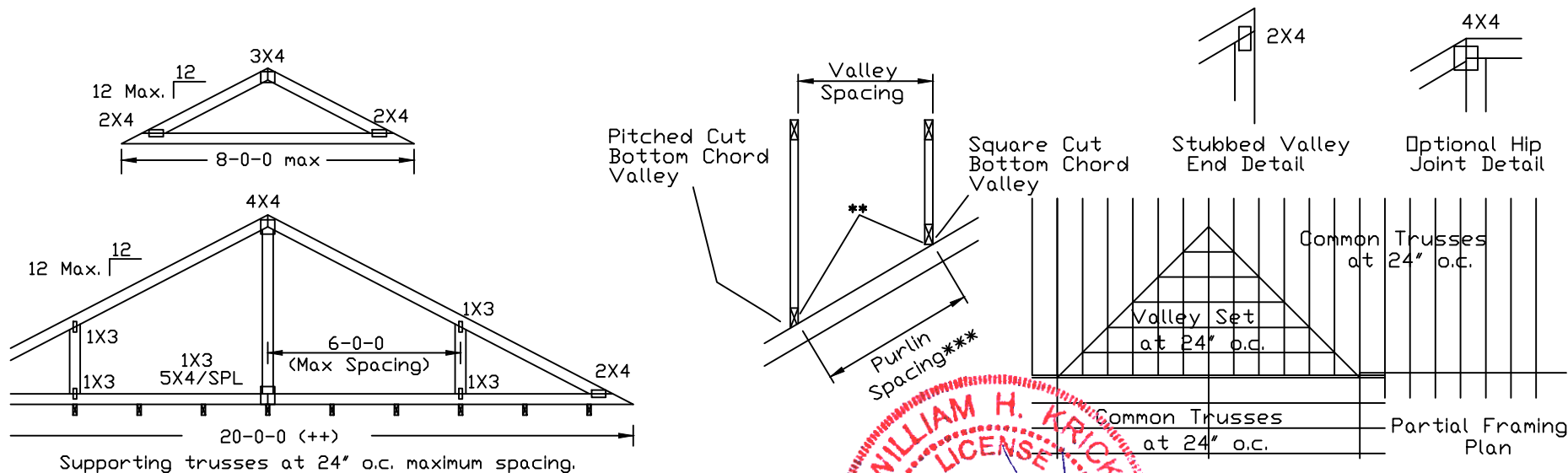
Purlins at 24" o.c. or as otherwise specified on engineer's sealed design

Or

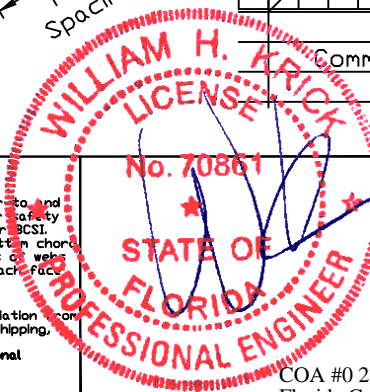
By valley trusses used in lieu of purlin spacing as specified on
 Engineer's sealed design.

***** Note that the purlin spacing for bracing the top chord of the truss
 beneath the valley is measured along the slope of the top chord.**

**++ Larger spans may be built as long as the vertical height does
 not exceed 14'-0".**



WARNING: READ AND FOLLOW ALL NOTES ON THIS DRAWING
IMPORTANT: FURNISH THIS DRAWING TO ALL CONTRACTORS INCLUDING THE INSTALLERS.
 Trusses require extreme care in fabricating, handling, shipping, installing and bracing. Refer to and follow the latest edition of BCSI (Building Component Safety Information, by TPI and SBCA) for safety practices prior to performing these functions. Installers shall provide temporary bracing per BCSI. Unless noted otherwise, top chord shall have properly attached structural sheathing and bottom chord shall have a properly attached rigid ceiling. Locations shown for permanent lateral restraint of webs shall have bracing installed per BCSI sections B3, B7 or B10, as applicable. Apply plates to each face of truss and position as shown above and on the Joint Details, unless noted otherwise. Refer to drawings 160A-Z for standard plate positions.
 Alpine, a division of ITW Building Components Group Inc. shall not be responsible for any deviation from this drawing, any failure to build the truss in conformance with ANSI/TPI 1, or for handling, shipping, installation & bracing of trusses.
 A seal on this drawing or cover page listing this drawing, indicates acceptance of professional engineering responsibility solely for the design shown. The suitability and use of this drawing for any structure is the responsibility of the Building Designer per ANSI/TPI 1 Sec.2.
 For more information see this Job's general notes page and these web sites:
 ALPINE: www.alpineitw.com; TPI: www.tpinet.org; SBCA: www.sbcacomponents.com; ICC: www.iccsafe.org



| | | | | | |
|----------|------|----|--------|------|---------------|
| TC LL | 30 | 30 | 40PSF | REF | VALLEY DETAIL |
| TC DL | 20 | 15 | 7PSF | DATE | 01/26/2018 |
| BC DL | 10 | 10 | 10 PSF | DRWG | VAL180160118 |
| BC LL | 0 | 0 | 0PSF | | |
| TOT. LD. | 60 | 55 | 57PSF | | |
| SPACING | 24.0 | | | | |

COA #0 278
 Florida Certificate of Product Approval #FL 999

| | | | |
|-----------|-----|----|------------------------------------|
| Top Chord | 2x4 | SP | #2N, SPF #1/#2, DF-L #2 or better. |
| Bot Chord | 2x4 | SP | #2N or SPF #1/#2 or better. |
| Webs | 2x4 | SP | #3, SPF #1/#2, DF-L #2 or better. |

| | |
|--|--|
| | |
| | |

| | | |
|----------|--------------------|--------|
| Category | Product Approval # | FL 199 |
|----------|--------------------|--------|

Gable Stud Reinforcement Detail

ASCE 7-16: 140 mph Wind Speed, 15' Mean Height, Enclosed, Exposure C, Kzt = 1.00

Or: 120 mph Wind Speed, 15' Mean Height, Partially Enclosed, Exposure C, Kzt = 1.00

Or: 120 mph Wind Speed, 15' Mean Height, Enclosed, Exposure D, Kzt = 1.00

Or: 100 mph Wind Speed, 15' Mean Height, Partially Enclosed, Exposure D, Kzt = 1.00

| Max Gable Vertical Length | 2x4 Gable Vertical | | Brace Grade | No Braces | (1) 1x4 'L' Brace * | | (1) 2x4 'L' Brace * | | (2) 2x4 'L' Brace ** | | (1) 2x6 'L' Brace * | | (2) 2x6 'L' Brace ** | |
|---------------------------|--------------------|----------|-------------|-----------|---------------------|---------|---------------------|---------|----------------------|---------|---------------------|---------|----------------------|---------|
| | Spacing | Species | | | Group A | Group B | Group A | Group B | Group A | Group B | Group A | Group B | Group A | Group B |
| | | | | | | | | | | | | | | |
| 24" O.C. | SPF | #1 / #2 | #1 | 4' 3" | 7' 3" | 7' 7" | 8' 7" | 8' 11" | 10' 3" | 10' 8" | 13' 6" | 14' 0" | 14' 0" | 14' 0" |
| | | | #3 | 4' 1" | 6' 7" | 7' 1" | 8' 6" | 8' 10" | 10' 1" | 10' 6" | 13' 4" | 13' 10" | 14' 0" | 14' 0" |
| | | | Stud | 4' 1" | 6' 7" | 7' 0" | 8' 6" | 8' 10" | 10' 1" | 10' 6" | 13' 4" | 13' 10" | 14' 0" | 14' 0" |
| | | Standard | #1 | 4' 6" | 5' 8" | 6' 0" | 7' 7" | 8' 1" | 10' 1" | 10' 6" | 11' 10" | 12' 8" | 14' 0" | 14' 0" |
| | | | #2 | 4' 3" | 7' 3" | 7' 7" | 8' 7" | 8' 11" | 10' 3" | 10' 8" | 13' 6" | 14' 0" | 14' 0" | 14' 0" |
| | | | #3 | 4' 2" | 6' 0" | 6' 4" | 7' 11" | 8' 6" | 10' 2" | 10' 7" | 12' 5" | 13' 4" | 14' 0" | 14' 0" |
| | SP DFL | Stud | #1 | 4' 2" | 6' 0" | 6' 4" | 7' 11" | 8' 6" | 10' 2" | 10' 7" | 12' 5" | 13' 4" | 14' 0" | 14' 0" |
| | | | #2 | 4' 0" | 5' 3" | 5' 7" | 7' 0" | 7' 6" | 10' 2" | 10' 7" | 11' 10" | 14' 0" | 14' 0" | 14' 0" |
| | | | Standard | 4' 0" | 5' 3" | 5' 7" | 7' 0" | 7' 6" | 10' 2" | 10' 7" | 11' 10" | 14' 0" | 14' 0" | 14' 0" |
| | | #1 / #2 | #1 | 4' 11" | 8' 4" | 8' 8" | 9' 10" | 10' 3" | 11' 8" | 12' 2" | 14' 0" | 14' 0" | 14' 0" | 14' 0" |
| | | | #3 | 4' 8" | 8' 1" | 8' 8" | 9' 8" | 10' 1" | 11' 7" | 12' 1" | 14' 0" | 14' 0" | 14' 0" | 14' 0" |
| | | | Stud | 4' 8" | 8' 1" | 8' 6" | 9' 8" | 10' 1" | 11' 7" | 12' 1" | 14' 0" | 14' 0" | 14' 0" | 14' 0" |
| 16" O.C. | SPF | #1 / #2 | #1 | 4' 8" | 6' 11" | 7' 5" | 9' 3" | 9' 11" | 11' 7" | 12' 1" | 14' 0" | 14' 0" | 14' 0" | 14' 0" |
| | | | #3 | 4' 8" | 6' 11" | 7' 5" | 9' 3" | 9' 11" | 11' 7" | 12' 1" | 14' 0" | 14' 0" | 14' 0" | 14' 0" |
| | | | Stud | 4' 8" | 6' 11" | 7' 5" | 9' 3" | 9' 11" | 11' 7" | 12' 1" | 14' 0" | 14' 0" | 14' 0" | 14' 0" |
| | | Standard | #1 | 5' 1" | 8' 5" | 8' 9" | 9' 11" | 10' 4" | 11' 10" | 12' 4" | 14' 0" | 14' 0" | 14' 0" | 14' 0" |
| | | | #2 | 4' 11" | 8' 4" | 8' 8" | 9' 10" | 10' 3" | 11' 8" | 12' 2" | 14' 0" | 14' 0" | 14' 0" | 14' 0" |
| | | | #3 | 4' 9" | 7' 4" | 7' 9" | 9' 9" | 10' 3" | 11' 8" | 12' 1" | 14' 0" | 14' 0" | 14' 0" | 14' 0" |
| | SP DFL | Stud | #1 | 4' 9" | 7' 4" | 7' 9" | 9' 9" | 10' 3" | 11' 8" | 12' 1" | 14' 0" | 14' 0" | 14' 0" | 14' 0" |
| | | | #2 | 4' 8" | 6' 5" | 6' 10" | 8' 7" | 9' 2" | 11' 7" | 12' 1" | 13' 6" | 14' 0" | 14' 0" | 14' 0" |
| | | | Standard | 4' 8" | 6' 5" | 6' 10" | 8' 7" | 9' 2" | 11' 7" | 12' 1" | 13' 6" | 14' 0" | 14' 0" | 14' 0" |
| | SPF | #1 / #2 | #1 | 5' 5" | 9' 2" | 9' 6" | 10' 10" | 11' 3" | 11' 8" | 13' 5" | 14' 0" | 14' 0" | 14' 0" | 14' 0" |
| | | | #3 | 5' 1" | 9' 0" | 9' 4" | 10' 8" | 11' 1" | 12' 9" | 13' 3" | 14' 0" | 14' 0" | 14' 0" | 14' 0" |
| | | | Stud | 5' 1" | 9' 0" | 9' 4" | 10' 8" | 11' 1" | 12' 9" | 13' 3" | 14' 0" | 14' 0" | 14' 0" | 14' 0" |
| | SP | Standard | #1 | 5' 1" | 8' 0" | 8' 6" | 10' 8" | 11' 1" | 12' 9" | 13' 3" | 14' 0" | 14' 0" | 14' 0" | 14' 0" |
| | | | #2 | 5' 8" | 9' 3" | 9' 8" | 10' 11" | 11' 4" | 13' 0" | 13' 6" | 14' 0" | 14' 0" | 14' 0" | 14' 0" |
| | | | #3 | 5' 5" | 9' 2" | 9' 6" | 10' 10" | 11' 3" | 12' 11" | 13' 5" | 14' 0" | 14' 0" | 14' 0" | 14' 0" |
| 12" O.C. | SPF | #1 / #2 | #1 | 5' 3" | 8' 5" | 9' 0" | 10' 9" | 11' 2" | 12' 10" | 13' 4" | 14' 0" | 14' 0" | 14' 0" | 14' 0" |
| | | | #3 | 5' 3" | 8' 5" | 9' 0" | 10' 9" | 11' 2" | 12' 10" | 13' 4" | 14' 0" | 14' 0" | 14' 0" | 14' 0" |
| | | | Stud | 5' 3" | 8' 5" | 9' 0" | 10' 9" | 11' 2" | 12' 10" | 13' 4" | 14' 0" | 14' 0" | 14' 0" | 14' 0" |
| | SP DFL | Standard | #1 | 5' 3" | 8' 5" | 9' 0" | 10' 9" | 11' 2" | 12' 10" | 13' 4" | 14' 0" | 14' 0" | 14' 0" | 14' 0" |
| | | | #2 | 5' 3" | 8' 5" | 9' 0" | 10' 9" | 11' 2" | 12' 10" | 13' 4" | 14' 0" | 14' 0" | 14' 0" | 14' 0" |
| | | | #3 | 5' 3" | 8' 5" | 9' 0" | 10' 9" | 11' 2" | 12' 10" | 13' 4" | 14' 0" | 14' 0" | 14' 0" | 14' 0" |

Bracing Group Species and Grades:

| Group A: | | | |
|-------------------|----------|------------------|----------|
| Spruce-Pine-Fir | | Hem-Fir | |
| #1 / #2 | Standard | #2 | Stud |
| #3 | Stud | #3 | Standard |
| Douglas Fir-Larch | | Southern Pine*** | |
| #3 | | #3 | |
| Stud | | Stud | |
| Standard | | Standard | |

| Group B: | | | |
|-------------------|--|------------------|--|
| Hem-Fir | | | |
| #1 & Btr | | | |
| #1 | | | |
| Douglas Fir-Larch | | Southern Pine*** | |
| #1 | | #1 | |
| #2 | | #2 | |

1x4 Braces shall be SRB (Stress-Rated Board).

***For 1x4 So. Pine use only Industrial 55 or Industrial 45 Stress-Rated Boards. Group B values may be used with these grades.

Gable Truss Detail Notes:

Wind Load deflection criterion is L/240.

Provide uplift connections for 55 plf over continuous bearing (5 psf TC Dead Load).

Gable end supports load from 4' 0" outlookers with 2' 0" overhang, or 12' plywood overhang.

Attach 'L' braces with 10d (0.128"x3.0" min) nails.

* For (1) 'L' brace: space nails at 2' o.c. in 18' end zones and 4' o.c. between zones.

** For (2) 'L' braces: space nails at 3' o.c. in 18' end zones and 6' o.c. between zones.

'L' bracing must be a minimum of 80% of web member length.

Gable Vertical Plate Sizes

| Vertical Length | No Splice |
|--------------------|------------|
| Less than 4' 0" | 1X4 or 2X3 |
| Greater than 4' 0" | 3X4 |

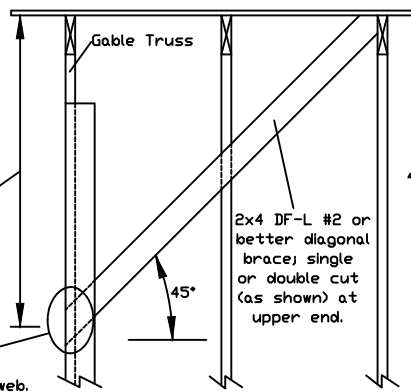
+ Refer to common truss design for peak, splice, and heel plates.

Refer to the Building Designer for conditions not addressed by this detail.

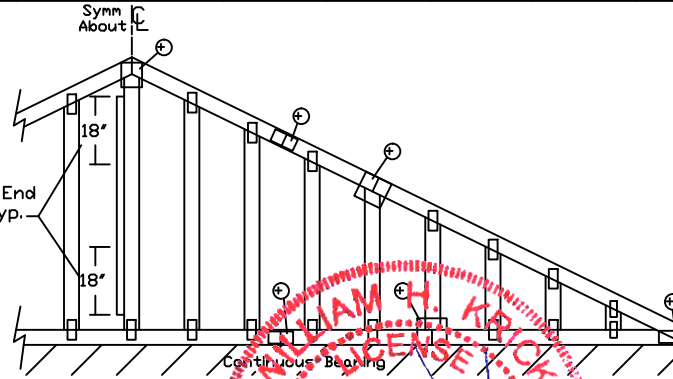
Diagonal brace option: vertical length may be doubled when diagonal brace is used. Connect diagonal brace for 450# at each end. Max web total length is 14'.

Vertical length shown in table above.

Connect diagonal at midpoint of vertical web.



'L' Brace End Zones, typ.



Refer to chart above for max gable vertical length.

WARNING READ AND FOLLOW ALL NOTES ON THIS DRAWING

IMPORTANT FURNISH THIS DRAWING TO ALL CONTRACTORS INCLUDING THE INSTALLERS. Trusses require extreme care in fabricating, handling, shipping, installing and bracing. Refer to and follow the latest edition of BCSI (Building Component Safety) Information, by TPI and SBCA for safety practices prior to performing these functions. Installers shall provide temporary bracing per BCSI. Unless noted otherwise, top chord shall have properly attached structural sheathing and bottom chord shall have a properly attached rigid ceiling. Locations shown for permanent lateral restraint of webs shall have bracing installed per BCSI sections B3, B7 or B10, as applicable. Apply plates to each face of truss and position as shown above and on the Joint Details, unless noted otherwise. Refer to drawings 160A-Z for standard plate positions.

Alpine, a division of ITW Building Components Group Inc. shall not be responsible for any deviation from this drawing, any failure to build the truss in conformance with ANSI/TPI 1, or for handling, shipping, installation & bracing of trusses.

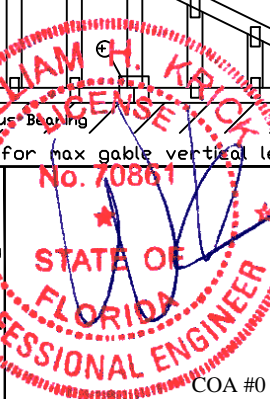
A seal on this drawing or cover page listing this drawing, indicates acceptance of professional engineering responsibility solely for the design shown. The suitability and use of this drawing for any structure is the responsibility of the Building Designer per ANSI/TPI 1 Sec.2.

For more information see this job's general notes page and these web sites:

ALPINE: www.alpineitw.com; TPI: www.tpinet.org; SBCA: www.sbcacomponents.com; ICC: www.iccsafe.org



155 Harlem Ave
North Building, 4th Floor
Glenview, IL 60025



MAX. TOT. LD. 60 PSF

06/28/2023

COA #0 278

Florida Certificate of Product Approval #11999

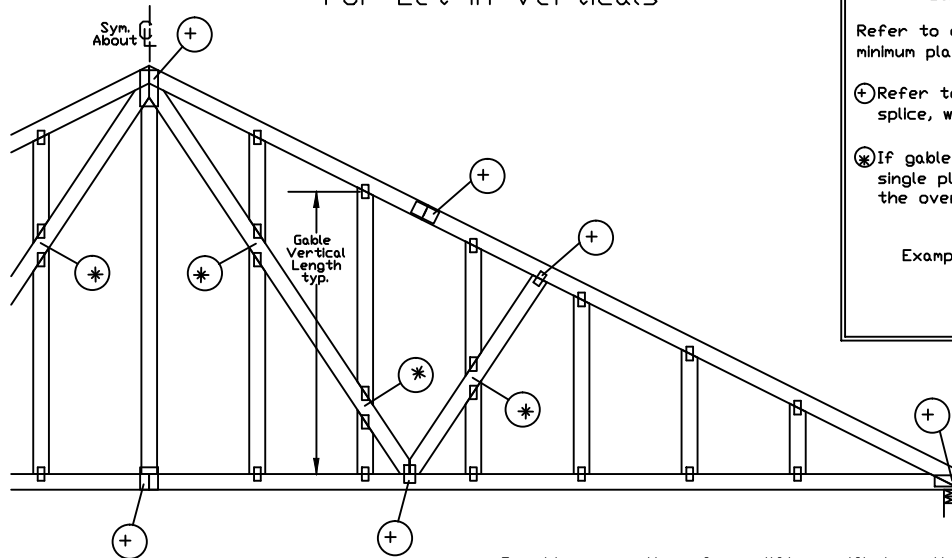
MAX. SPACING 24.0

REF ASCE7-16-GAB14015

DATE 01/26/2018

DRWG A14015ENC160118

Gable Detail For Let-in Verticals

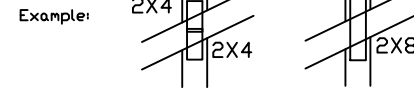


Gable Truss Plate Sizes

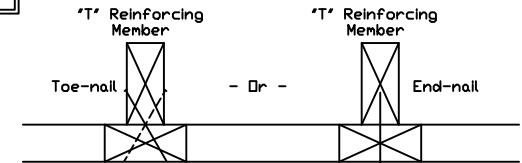
Refer to appropriate Alpine gable detail for minimum plate sizes for vertical studs.

⊕ Refer to Engineered truss design for peak, splice, web, and heel plates.

⊗ If gable vertical plates overlap, use a single plate that covers the total area of the overlapped plates to span the web.



'T' Reinforcement Attachment Detail



To convert from 'L' to 'T' reinforcing members, multiply 'T' increase by length (based on appropriate Alpine gable detail).

Maximum allowable 'T' reinforced gable vertical length is 14' from top to bottom chord.

'T' reinforcing member material must match size, specie, and grade of the 'L' reinforcing member.

Web Length Increase w/ 'T' Brace

| 'T' Reinf. Mbr. Size | 'T' Increase |
|----------------------|--------------|
| 2x4 | 30 % |
| 2x6 | 20 % |

Example:

ASCE 7-10 Wind Speed = 120 mph

Mean Roof Height = 30 ft, Kzt = 1.00

Gable Vertical = 24' o.c. SP #3

'T' Reinforcing Member Size = 2x4

'T' Brace Increase (From Above) = 30% = 1.30

(1) 2x4 'L' Brace Length = 8' 7"

Maximum 'T' Reinforced Gable Vertical Length
1.30 x 8' 7" = 11' 2"

Provide connections for uplift specified on the engineered truss design.

Attach each 'T' reinforcing member with

End Driven Nails:

10d Common (0.148"x 3", min) Nails at 4' o.c. plus
(4) nails in the top and bottom chords.

Toenailed Nails:

10d Common (0.148"x 3", min) Toenails at 4' o.c. plus
(4) toenails in the top and bottom chords.

This detail to be used with the appropriate Alpine gable detail for ASCE wind load.

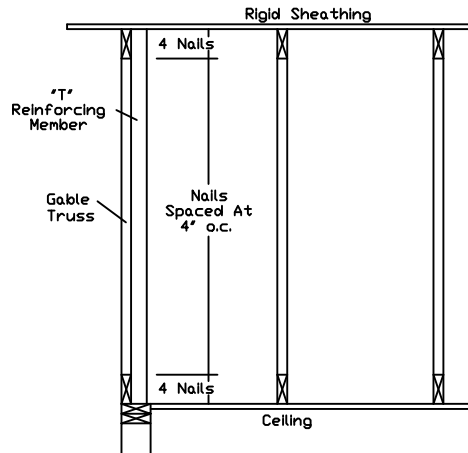
ASCE 7-05 Gable Detail Drawings

A13015051014, A12015051014, A11015051014, A10015051014, A14015051014,
A13030051014, A12030051014, A11030051014, A10030051014, A14030051014

ASCE 7-10 & ASCE 7-16 Gable Detail Drawings

A11515ENC100118, A12015ENC100118, A14015ENC100118, A16015ENC100118,
A18015ENC100118, A20015ENC100118, A20015END100118, A20015PED100118,
A11530ENC100118, A12030ENC100118, A14030ENC100118, A16030ENC100118,
A18030ENC100118, A20030ENC100118, A20030END100118, A20030PED100118,
S11515ENC100118, S12015ENC100118, S14015ENC100118, S16015ENC100118,
S18015ENC100118, S20015ENC100118, S20015END100118, S20015PED100118,
S11530ENC100118, S12030ENC100118, S14030ENC100118, S16030ENC100118,
S18030ENC100118, S20030ENC100118, S20030END100118, S20030PED100118

See appropriate Alpine gable detail for maximum unreinforced gable vertical length.



WARNING: READ AND FOLLOW ALL NOTES ON THIS DRAWING
IMPORTANT: FURNISH THIS DRAWING TO ALL CONTRACTORS INCLUDING THE INSTALLERS.

Trusses require extreme care in fabricating, handling, shipping, installing and bracing. Refer to and follow the latest edition of BCSI (Building Component Safety Information, by TPI and SBCA) for safety practices prior to performing these functions. Installers shall provide temporary bracing per BCSI. Unless noted otherwise, top chord shall have properly attached structural sheathing and bottom chord shall have a properly attached rigid ceiling. Locations shown for permanent lateral restraints, as gables shall have bracing installed per BCSI sections B3, B7 or B10, as applicable. Apply plates to each end of truss and position as shown above and on the Joint Details, unless noted otherwise. Refer to drawings 160A-Z for standard plate positions.

Alpine, a division of ITW Building Components Group Inc. shall not be responsible for any deviation from this drawing, any failure to build the truss in conformance with ANSI/TPI 1, or for handling, shipping, installation & bracing of trusses.

A seal on this drawing or cover page listing this drawing, indicates acceptance of professional engineering responsibility solely for the design shown. The suitability and use of this drawing for any structure is the responsibility of the Building Designer per ANSI/TPI 1 Sec.2.

For more information see this Job's general notes page and these web sites:

ALPINE: www.alpineitw.com; TPI: www.tpinet.org; SBCA: www.sbcacomponents.com; ICC: www.iccsafe.org

ALPINE
AN ITW COMPANY

155 Harlem Ave
North Building, 4th Floor
Glenview, IL 60025

No. 70861

STATE OF
FLORIDA
PROFESSIONAL ENGINEER

MAX. TOT. LD. 60 PSF

DUR. FAC.

MAX. SPACING 24.0"

REF LET-IN VERT

DATE 01/02/2018

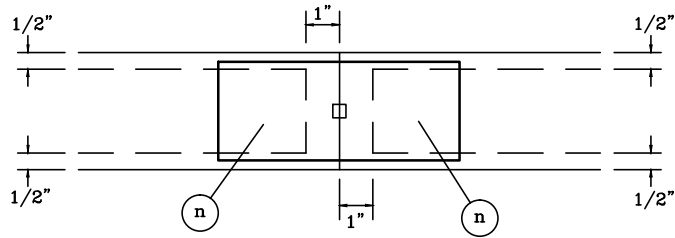
DRWG GBLLETIN0118

COA #0 278

Florida Certificate of Product Approval #PL 1999

TRULOX INFORMATION DETAIL

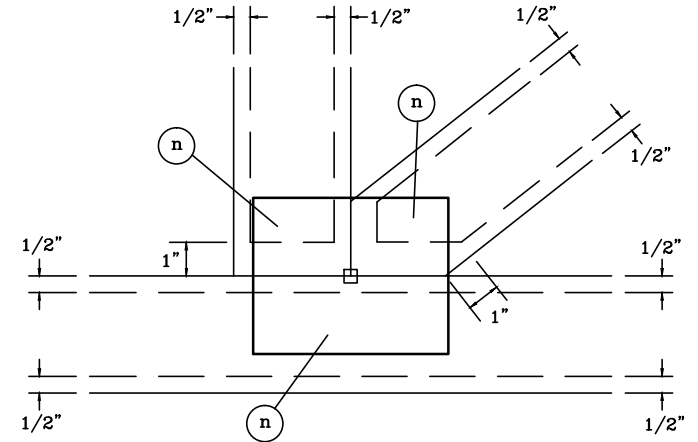
TYPICAL OFF PANEL SPLICE



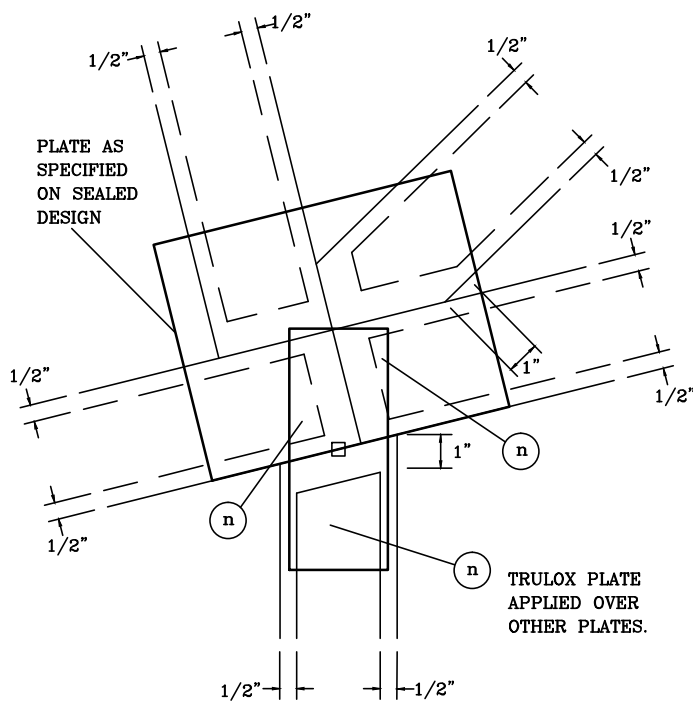
DO NOT APPLY NAILS WITHIN 1/2" OF LUMBER EDGES OR 1" OF LUMBER ENDS ON EACH FACE, AS SHOWN BY DASHED LINES.

NAILS MUST NOT SPLIT LUMBER.

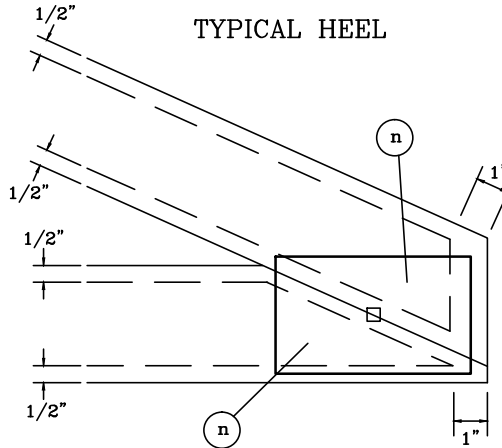
TYPICAL PANEL POINT WITHOUT SPLICE



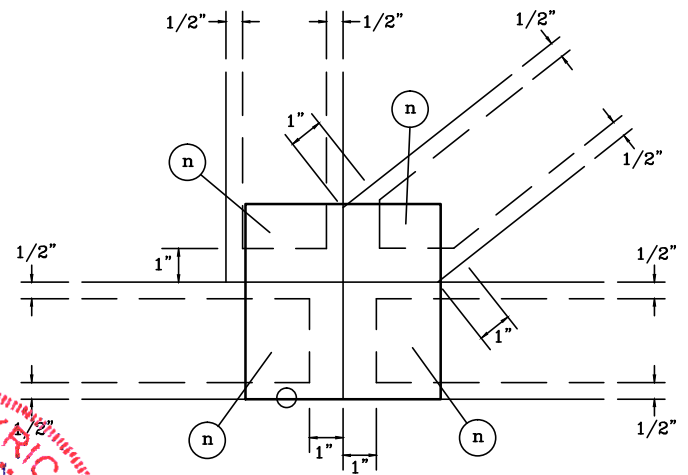
TYPICAL FILLER



TYPICAL HEEL



TYPICAL PANEL POINT SPLICE

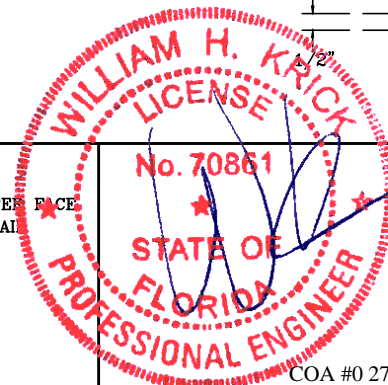


NOTES:

- (n) IS THE REQUIRED NUMBER OF 0.120" X 1.375" NAILS, OR EQUAL, PER FACE PER PLY AS SPECIFIED ON THE SEALED DESIGN REFERENCING THIS DETAIL.
- LOCATES PLATE CORNER OR FLUSH EDGE.
- LOCATES PLATE CENTER.



155 Harlem Ave
North Building, 4th Floor
Glenview, IL 60025



COA #0 278
Florida Certificate of Product Approval #FL 1999

06/28/2023

TRULOX PLATING

160
TL

PAGE 1 OF 1

DATE 10/01/14