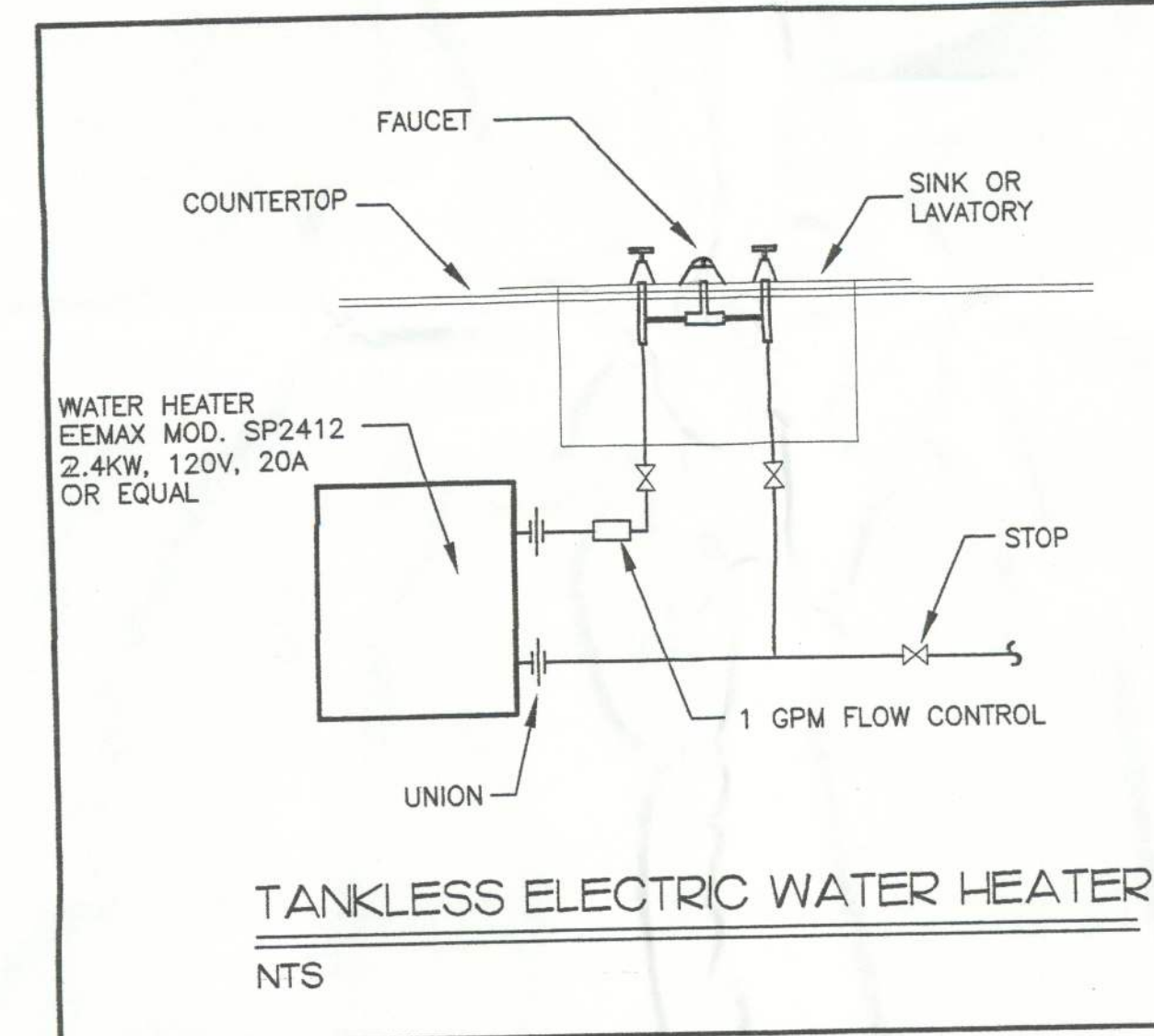
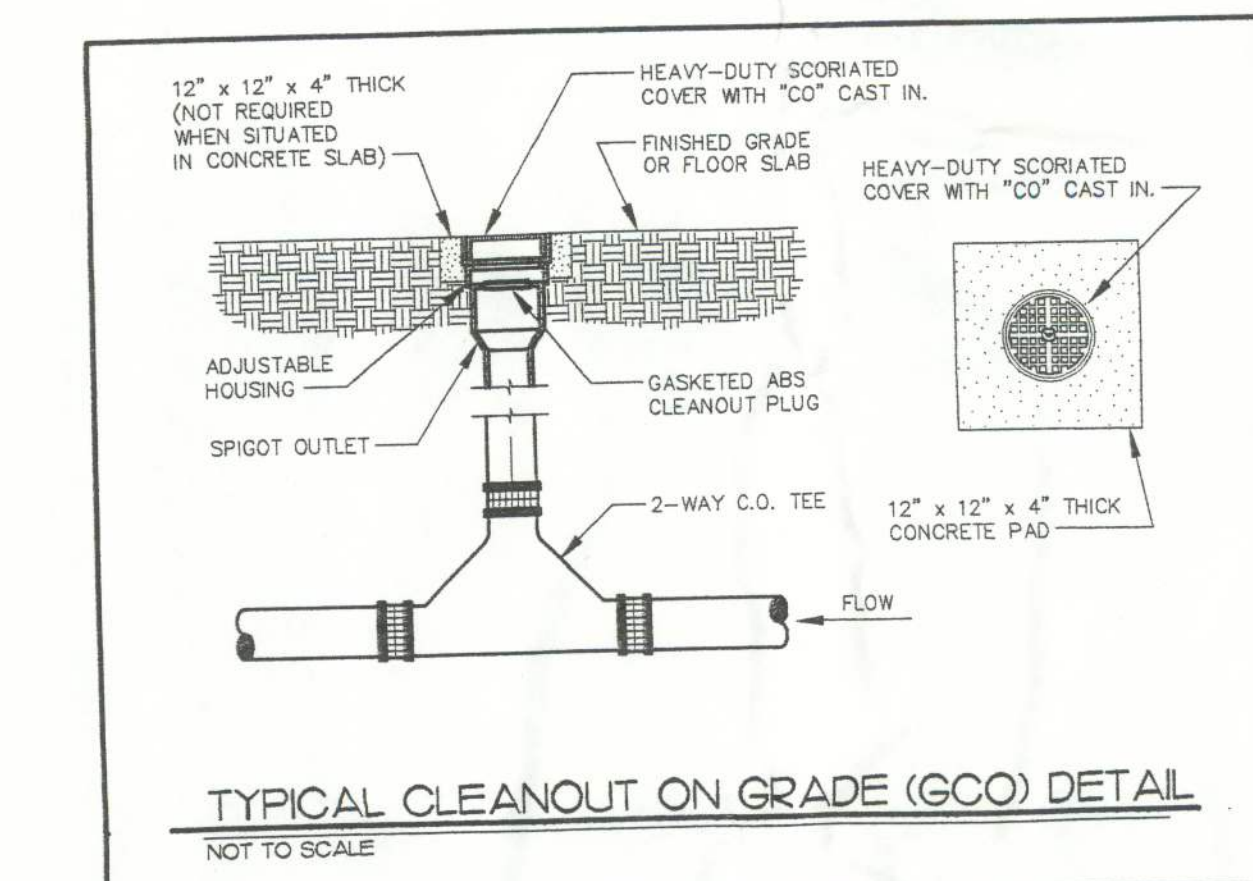
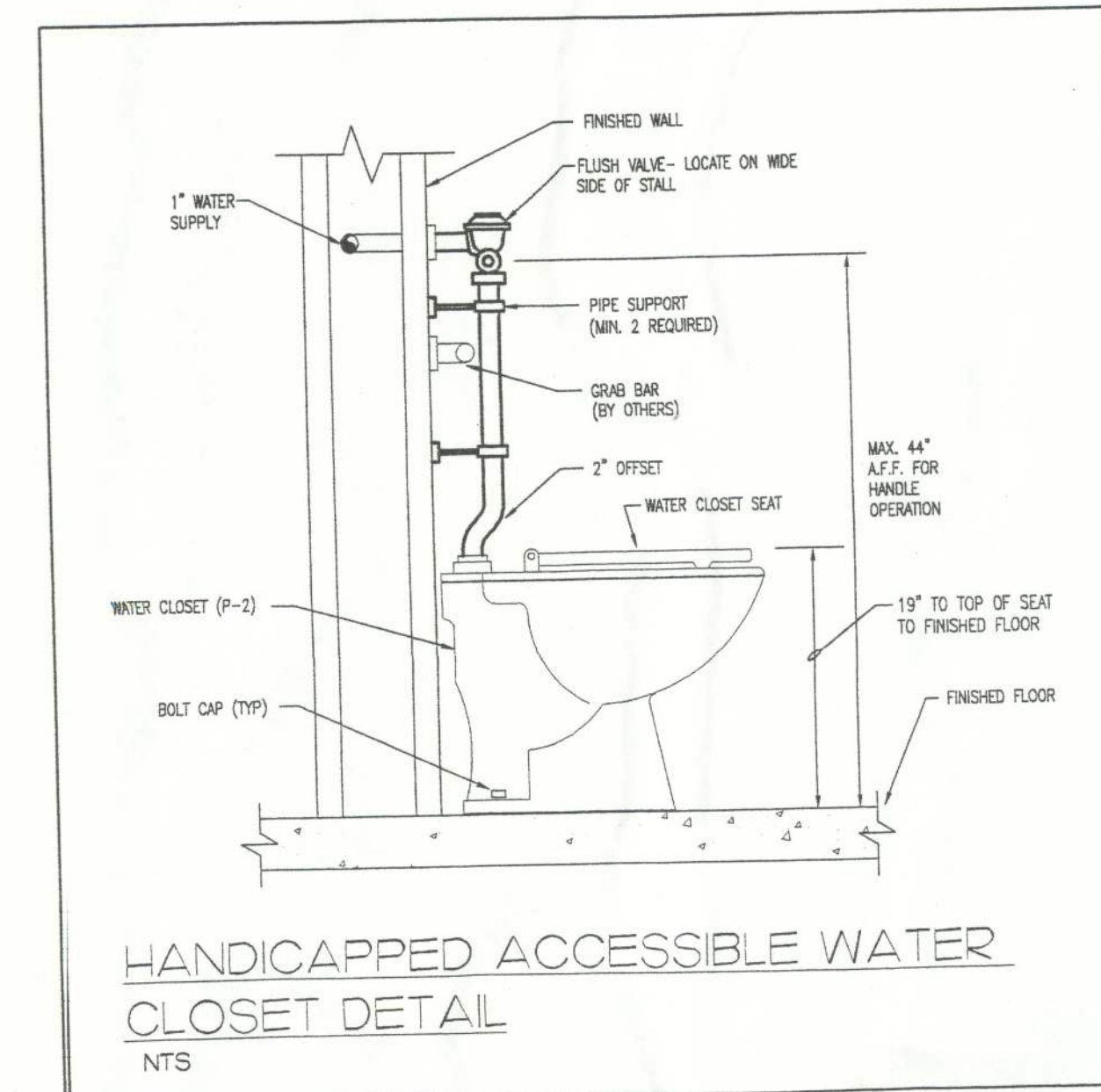
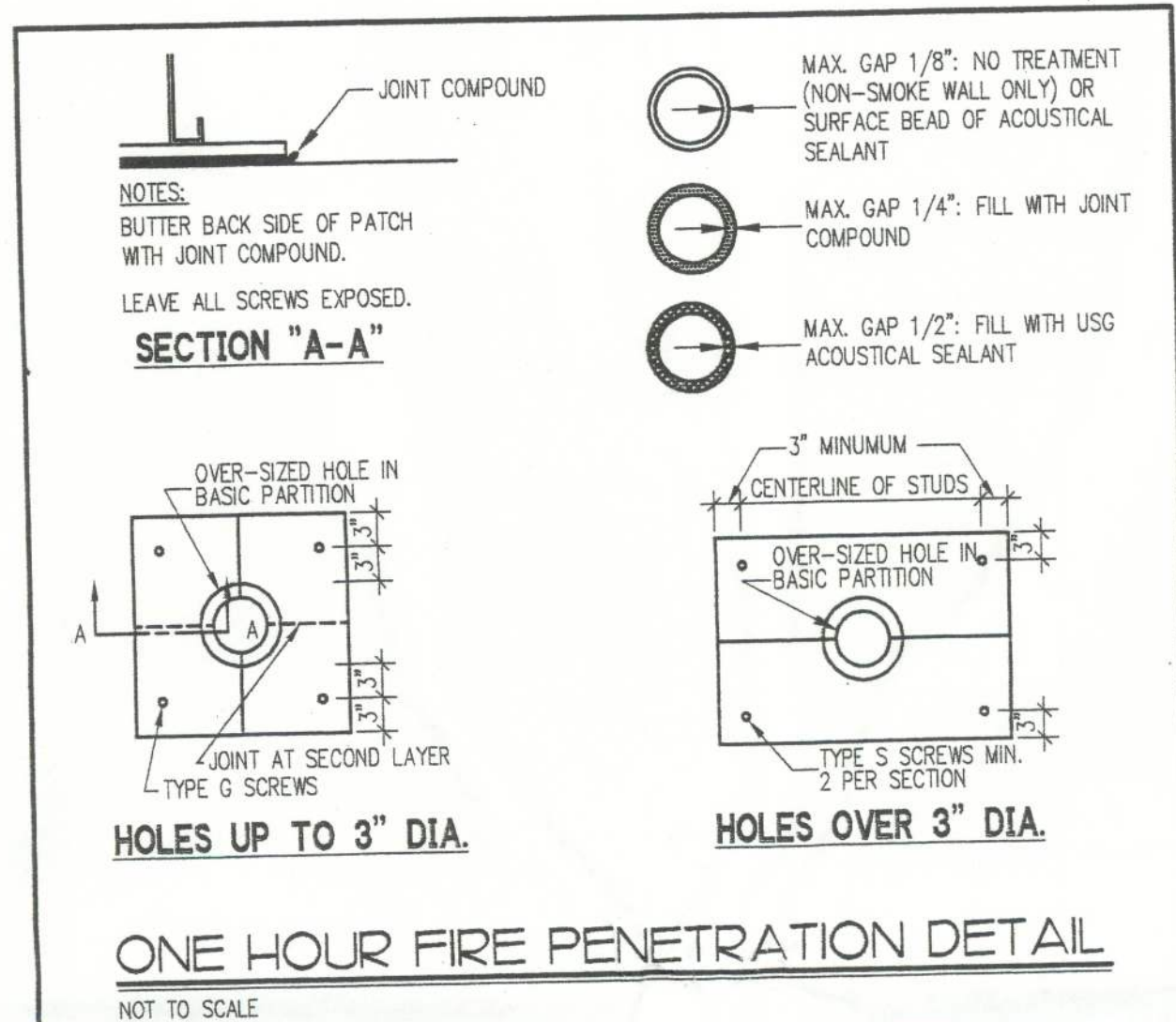


PLUMBING FIXTURE SCHEDULE						
MARK/SYMBOL	DESCRIPTION	ROUGH-IN SIZES				
		CW	HW	S OR W	V	
P-1 WATER CLOSET	BOWL FLUSH VALVE SEAT FLR. MOUNTED, TOP SPUD, SIPHON JET KOHLER K-4350-ET. CHROME PLATED BRASS, ZURN Z-6000XL. SOLID PLASTIC WHITE, OPEN FRONT, OLSONITE #9555.	1	-	4	2	
**P-2 WATER CLOSET (HANDICAP)	BOWL FLUSH VALVE SEAT FLR. MOUNTED, TOP SPUD, SIPHON JET KOHLER K-4368-ET. CHROME PLATED BRASS, ZURN Z-6000XL. SOLID PLASTIC WHITE, OPEN FRONT, OLSONITE #9555. NOTE: MOUNT BOWL @ 18" A.F.F.	1	-	4	2	
**P-3 URINAL (HANDICAP)	URINAL FLUSH VALVE CARRIER NOTE: WALL MOUNTED, 3/4" TOP SPUD, SIPHON JET, ELONGATED RIM, KOHLER K-4960-ET. CHROME PLATED BRASS, ZURN Z-6003XL. LEG SUPPORTS WITH BEARING PLATE, Z-1222-58. MOUNT RIM @ 17" A.F.F.	3/4	-	2	2	
P-4 MOP SINK	SINK FAUCET WALL PANELS HOSE HANGER STERN WILLIAMS NO. HL-1810-BP 24"x24"x12" TERRAZZO FLOOR MOUNTED WITH CAST BRASS STRAINER AND STAINLESS STEEL CAPS ALL SIDES. CHICAGO 897-R-PC WALL MOUNTED, CHROME PLATED, INTEGRAL STOPS, PAIL HOOK AND WALL SUPPORT. STERN WILLIAMS NO. BP STAINLESS WALL PANELS. STERN WILLIAMS NO. T-35 HOSE AND BRACKET. STERN WILLIAMS NO. T-40 MOP HANGER.	1/2	1/2	3	2	
P-5 LAVATORY	LAVATORY FAUCET DRAIN P-TRAP SUPPLY COUNTER MOUNTED 20"x17" VITREOUS CHINA SELF-RIMMING W/4" FAUCET DRILLING, KOHLER K-2196-4 SINGLE LEVER FAUCET W/ WRIST OPERATED HANDLE. 0.5 GPM FLOW RATE. SYMMONS S-90-2FR-G. GRID DRAIN. CAST BRASS WITH CLEANOUT, KOHLER K-9000. WITH LOOSE KEY HANDLES. CHICAGO 1029.	1/2	1/2	1 1/2	2	
**P-6 LAVATORY (HANDICAP)	LAVATORY FAUCET DRAIN P-TRAP SUPPLY CARRIER INSULATION NOTE: 20" X 18" WALL MOUNTED V/CHINA. WHEELCHAIR KOHLER K-2005 SINGLE LEVER FAUCET W/ WRIST OPERATED HANDLE. 0.5 GPM FLOW RATE. SYMMONS S-90-2-OFG. OFFSET GRID DRAIN. CAST BRASS WITH CLEANOUT, KOHLER K-9000. WITH LOOSE KEY HANDLES. CHICAGO 1029. W/LEG SUPPORTS & CONCEALED ARMS, ZURN Z-1231-79. DRAIN AND SUPPLY GUARDS, WHITE, TOI-SCAL GARD #SG-200B W/SG-103 OFFSET POLYURETHANE FOAM. MOUNT RIM @ 34" A.F.F.	1/2	1/2	1 1/2	2	
P-7 SINK	SINK FAUCET DRAIN P-TRAP SUPPLY JUST #DL-2233-A-GR 18 GA STAINLESS STEEL DOUBLE COMPARTMENT 33" x 22" COUNTER MOUNTED. LEVER HANDLE WITH 8 1/2" SWING SPOUT WITH AREATOR. SYMMONS S-93. WITH BASKET STRAINER, JUST J-35-GS. CAST BRASS WITH CLEANOUT, KOHLER K-9000. WITH LOOSE KEY HANDLES, CHICAGO 1029.	1/2	1/2	1 1/2	2	
**P-8 ELECTRIC WATER COOLER (HANDICAP)	FOUNTAIN P-TRAP SUPPLY INSULATION OASIS # PBMSL BI-LEVEL MODULAR ELECTRIC WATER COOLER 115/1/60. VINYL ON STEEL FINISH. CAST BRASS WITH CLEANOUT, KOHLER K-9000. FLEX-COPPER WITH BALL VALVE. FOAM INSULATION OVER P-TRAP AND DRAIN FOR CONDENSATION CONTROL.	1/2	-	1 1/2	2	
**P-9 ELECTRIC WATER COOLER (HANDICAP)	FOUNTAIN P-TRAP SUPPLY INSULATION ELKAY MODEL # EBSFA-8 ELECTRIC WATER COOLER 115/1/60. VINYL ON STEEL FINISH. CAST BRASS WITH CLEANOUT, KOHLER K-9000. FLEX-COPPER WITH BALL VALVE. FOAM INSULATION OVER P-TRAP AND DRAIN FOR CONDENSATION CONTROL.	1/2	-	1 1/2	2	
* FLOOR DRAIN	DRAIN ZURN ZN-415 CAST IRON BODY WITH 8" TYPE "B" NICKEL BRONZE STRAINER. PROVIDE TRAP PRIMER ACCORDING TO LOCAL CODE.	1/2"	-	3-4	2	
* FLOOR DRAIN	DRAIN ZURN ZN-415-Y CAST IRON BODY WITH 8" TYPE "B" NICKEL BRONZE STRAINER WITH SEDIMENT BASKET PROVIDE TRAP PRIMER ACCORDING TO LOCAL CODE.	1/2"	-	3-4	2	
FCO FLOOR CLEANOUT	CLEANOUT ZURN ZN-1400-T ADJUSTABLE CLEANOUT CAST IRON BODY WITH NICKEL BRONZE SQUARE TOP.	-	-	3-4	-	
GCO GRADE CLEANOUT	CLEANOUT ZURN ZN-1400-HD-T ADJUSTABLE CLEANOUT HEAVY DUTY CAST IRON BODY WITH NICKEL BRONZE SQUARE TOP..	-	-	3-4	-	
HB HOSE FAUCET	HOSE BIBB CHICAGO #952 CHROME PLATED LOOSE KEY WITH VACUUM BREAKER.	3/4	-	-	-	
SA SHOCK ABSORBER	ZURN 1700 SERIES SHOCK ABSORBER, STAINLESS STEEL, BELLOWS STYLE.	-	-	-	-	

* NOTE COORDINATE FLOOR DRAIN, HUB DRAIN AND CLEANOUT LOCATIONS WITH EQUIPMENT, OWNER, OTHER TRADES AND ARCHITECT.

** NOTE MATERIALS, FIXTURES, ACCESSORIES AND INSTALLATION TO MEET ALL A.D.A. REQUIREMENTS.



PLUMBING GENERAL NOTES

- PIPE ROUTING SHOWN IS SCHEMATIC AND IS NOT INTENDED TO INDICATE EXACT ROUTING AND ALL ADDITIONAL OFFSETS AND FITTINGS REQUIRED FOR PROPER INSTALLATION AND TO MAINTAIN CLEARANCES. CONTRACTOR TO VERIFY STRUCTURAL, MECHANICAL, ELECTRICAL INSTALLATIONS AND OBSTRUCTIONS OF ALL DESCRIPTION AND ROUTE PIPING TO AVOID ANY AND ALL INTERFERENCES.
- ALL PLUMBING INSTALLATIONS AND MATERIALS SHALL BE IN STRICT ACCORDANCE WITH ALL LOCAL, STATE AND FEDERAL CODES AND REGULATIONS AND AUTHORITIES HAVING JURISDICTION OVER THIS PROJECT.
- ROUTE ALL PIPING CONCEALED ABOVE CEILING, WITHIN WALLS OR IN CHASES EXCEPT AS SPECIFICALLY NOTED, OR IN MECHANICAL EQUIPMENT ROOMS.
- SEE ARCHITECTURAL DRAWINGS FOR FIXTURE LOCATIONS AND MOUNTING HEIGHTS.
- SLEEVE AND FIRE STOP ALL PENETRATIONS OF RATED WALLS, CEILINGS, FLOORS, ETC., INCLUDING ROOF. FLASH AND COUNTERFLASH ROOF PENETRATIONS.
- PLUMBING CONTRACTOR SHALL PROVIDE AND INSTALL WHEN REQUIRED BY CODE AN AIR GAP SERVING INDIVIDUAL FIXTURES, DEVICES, APPLIANCES OR APPARATUS.
- ALL SANITARY WASTE LINES ARE UNDER FLOOR SLAB, ALL VENT LINES AND WATER LINES ARE ABOVE CEILING UNLESS NOTED OTHERWISE.
- SEE PARTIAL SANITARY WASTE AND VENT RISER SCHEMATIC DIAGRAM FOR WASTE AND VENT PIPE SIZING.
- FIRE PROOF PVC PIPING IN R.A. PLUMB.
- FLOOR DRAIN TRAPS SHALL BE DEEP SEAL (MIN. 4").
- MOUNT HOSE BIBBS 24" ABOVE FINISHED GRADE.
- PLUMBING CONTRACTOR TO PROVIDE SANITARY WASTE, VENT, DOMESTIC WATER, ETC., ROUGH-IN AND MAKE FINAL CONNECTIONS (INCLUDING SUPPLYING AND/OR INSTALLING ALL NECESSARY RELATED STOPS, VALVES, TRAPS, ETC., AND MAKING READY FOR USE) TO ALL EQUIPMENT WHETHER FURNISHED BY THIS CONTRACTOR OR FURNISHED BY OTHERS.
- SIZE AND LOCATION OF CLEANOUTS SHALL BE IN ACCORDANCE WITH SOUTHERN BUILDING STANDARD PLUMBING CODE AND ALL JURISDICTIONAL REGULATIONS.
- FIELD VERIFY EXISTING INSTALLATIONS OF ALL DESCRIPTIONS. MODIFY EXISTING PLUMBING SYSTEMS, WHICH ARE TO REMAIN ACTIVE, TO FACILITATE RECONNECTION AND EXTENSION UNDER THE NEW WORK.
- INSTALL ALL PIPING CONCEALED ABOVE CEILING, WITHIN WALLS OR IN CHASES, EXCEPT AS SPECIFICALLY NOTED. PATCH ALL EXISTING SURFACES DISTURBED TO MATCH ADJACENT SURFACES. WORK TO BE DONE ONLY BY WORKMAN SKILLED IN THE TRADE INVOLVED AND TO THE SATISFACTION OF THE OWNER'S REPRESENTATIVE.
- ALL CONCEALED VALVES, WATER HAMMER ARRESTORS, CLEANOUTS, ETC., CONCEALED IN WALLS SHALL BE PROVIDED WITH AN ACCESS PANEL SUCH AS ZURN MODEL ZN-1460 OR APPROVED EQUAL.
- ALL CONCEALED PIPING IN CHASE AREAS SHALL BE SUPPORTED WITH A PIPING SUPPORT SYSTEM SUCH AS SUMNER POSTFIX, STANFAX AND CHANNEL OR APPROVED EQUAL.
- UTILITIES AND SERVICES INDICATED ARE TAKEN FROM VARIOUS OLD AND NEW SURVEYS, AS-BUILT RECORDS AND FIELD INVESTIGATION. IT IS TO BE UNDERSTOOD THAT UNFORESEEN CONDITIONS, PROBABLY EXIST AND NEW WORK MAY NOT BE FIELD LOCATED EXACTLY AS SHOWN ON DRAWINGS. COOPERATION WITH OTHER TRADES IN ROUTING AND/OR BURIAL DEPTHS, AS DETERMINED DURING CONSTRUCTION, AND AS DIRECTED BY THE ARCHITECT/ENGINEER WILL BE NECESSARY AND IT IS INTENDED ALSO TO BE UNDERSTOOD THAT THE PLANS ARE NOT COMPLETELY TO SCALE. THIS CONTRACTOR IS TO FIELD VERIFY DIMENSIONS OF ALL SITE UTILITIES, ETC., PRIOR TO BID, AND INCLUDE ANY DEVIATIONS IN THIS PROJECT.

SHOCK ARRESTOR SCHEDULE

FIXTURE UNITS	1-11	12-32	33-60	61-113	114-154	155-330
AW	1	2	3	4	5	6
CB	1	2	3	4	5	6
CD	1	2	3	4	5	6
CO	1	2	3	4	5	6
DA	1	2	3	4	5	6
DI	1	2	3	4	5	6
DN	1	2	3	4	5	6
DW	1	2	3	4	5	6
FCO	1	2	3	4	5	6
GCO	1	2	3	4	5	6
HB	1	2	3	4	5	6
SA	1	2	3	4	5	6

CLEANOUT SCHEDULE

CLEANOUT APPLICATION	TYPE	JOSAM	SMITH	INDE
FINISHED CONCRETE FLOOR (CAST IRON BODY, BRONZE PLUG, NICKEL BRONZE TOP)	CAST IRON	56000	4028	W-7040-K
FINISHED WALL (CAST IRON BODY, BRONZE PLUG, STAINLESS STEEL COVER)	CAST IRON	56790-22	4532	W-8460-R
EXPOSED PIPING (CAST IRON BODY, BRONZE PLUG)	HORIZONTAL	58500-22	4400	W-8550-S
VERTICAL	VERTICAL	58510-22	4512	W-8560-D
TILED AREA (CAST IRON BODY, BRONZE PLUG, SQUARE)	ROUND	56000-12	4148	W-7040-T
QUARRY TILE	SQUARE	56020-12	4048	W-7040-S
CARPETED AREA (CAST IRON BODY, BRONZE PLUG, NICKEL BRONZE TOP)	CAST IRON	56000-14	4028-Y	W-7040-DM
TERRAZZO (CAST IRON BODY, BRONZE PLUG, NICKEL BRONZE TOP)	CAST IRON	56040-1-13	4188	W-7040-U
DECKTOP (CAST IRON BODY, BRONZE PLUG, NICKEL BRONZE TOP)	CAST IRON	58000-30	DX-4343	7040-D

FLOOR DRAIN SCHEDULE

FLOOR DRAIN	CAST IRON FLOOR DRAIN WITH FLANGE, INTEGRAL REVERSIBLE CLAMPING COLLAR, SEEPAGE OPENINGS AND 5" SQUARE SATIN NICKEL BRONZE STRAINER WITH VANDAL PROOF SCREWS. ZURN Z-415 W/ TYPE S STRAINER OR EQUAL.
FLOOR SINK	CAST IRON FLOOR DRAIN WITH INTEGRAL CLAMPING COLLAR, SEEPAGE OPENINGS, ADJUSTABLE TOP, GRATE SUPPORTED BY BUCKET AND VANDAL PROOF SCREWS. ZURN Z-415 WITH 8" TOP OR EQUAL.

PLUMBING SYMBOL & ABBREVIATION LEGEND

SYMBOLS:	
COLD WATER PIPING	ROOF DRAIN
HOT WATER PIPING	CONNECT TO EXISTING
HOT WATER RETURN PIPING	VALVE IN BOX
SANITARY WASTE PIPING	BUTTERFLY VALVE
SANITARY WASTE VENT PIPING	GATE VALVE
COMPRESSED AIR	GLOBE VALVE
ACID VENT	BALANCING VALVE
ACID WASTE	CHECK VALVE (SWING)
CONDENSATE DRAIN	CHECK VALVE (SWING)
DENTAL AIR	SAFETY RELIEF VALVE
DENTAL VACUUM	REDUCED PRESSURE BACKFLOW PREVENTER W/ STRAINER
DEIONIZED WATER	VALVE IN RISE
FUEL OIL FILL	GAS COOK IN RISE
FUEL OIL GAUGE	GAS COOK
FUEL OIL SUPPLY	BALANCING COOK
FUEL OIL RETURN	GAS PRESSURE REGULATOR
FUEL OIL VENT	BUSHING
GAS PIPING	DIRECTION OF FLOW
KITCHEN WASTE (GREASE)	CAP
MEDICAL AIR	CONNECTION, TOP
MEDICAL VACUUM	CONNECTION, BOTTOM
NITROGEN	CONNECTION, BOTTOM
NITROUS OXIDE	TEE, TURNED DOWN
NON-POTABLE WATER	TEE, TURNED UP
OXYGEN	CROSS
OVERFLOW STORM DRAIN	ELBOW, 90°
STORM	ELBOW, 45°
SOFT COLD WATER	ELBOW, TURNED DOWN
VACUUM	ELBOW, TURNED UP
VACUUM CLEANING	REDUCER, CONCENTRIC
WASTE OIL	REDUCER, ECCENTRIC
WASTE OIL VENT	
WATER METER	
HOSE BIBB WITH VACUUM BREAKER	
CLEANOUT PLUG	
FLOOR CLEANOUT	
FLOOR DRAIN	
SHOCK ARRESTOR	
FLOOR SINK	

ABBREVIATIONS

AF	ABOVE FINISHED FLOOR	FOS	FUEL OIL SUPPLY	NP	NON-POTABLE WATER
AW	ACID WASTE	FOV	FUEL OIL VENT	NTS	NOT TO SCALE
AV	ACID VENT	FS	FLOOR SINK	O2	OXYGEN
CB	CATCH BASIN	G	GAS	OD	OUTSIDE DRAINAGE
CD	CONDENSATE DRAIN	GPH	GALLONS PER HOUR	OFST	OVERFLOW STORM DRAIN
CO	CUBIC FEET PER HOUR	GPM	GALLONS PER MINUTE	PRV	PRESSURE REDUCING VALVE
CO	CLEANOUT	KPH	KITCHEN WASTE (GREASE)	PSI	PRESSURE PER SQUARE INCH
CONT	CONTINUATION	LB	POUNDS	PVC	POLYVINYL CHLORIDE PIPE
CW	COLD WATER	MD	DOMESTIC HOT WATER	RD	ROOF DRAIN
DA	DENTAL AIR	HW	DOMESTIC HOT WATER	RPPB	REDUCED PRESSURE BACKFLOW PREVENTER
DI	DEIONIZED WATER	IE	INVERT ELEVATION	SAH	SANITARY
DN	DOWN	IN	INDIRECT WASTE	SD	STORM DRAIN
DV	DENTAL VACUUM	IN	INDIRECT WASTE	SE	SQUARE FEET
DW	DRAWING	LB	POUNDS	SH	SHEET
ELEV	ELEVATION	MA	MEDICAL VACUUM	SW	SOFT COLD WATER
EXST	EXISTING	MAN	MANHOLE	V	VENT
FD	FLOOR DRAIN	N	NITROGEN	VAC	VACUUM
FO	FUEL OIL FILL	N2O	NITROUS OXIDE	VC	VACUUM CLEANING
FOG	FUEL OIL GAUGE	NC	NORMALLY CLOSED	VEL	VELOCITY
FOR	FUEL OIL RETURN	NO	NOT IN CONTRACT	VTR	VENT THRU ROOF
				WTR	WATER

NOTE: SOME ITEMS LISTED MAY NOT BE USED ON THIS PROJECT

PLUMBING FIXTURE SCHEDULE

SYMBOL	FIXTURE TYPE	C.W., IN.	H.W., IN.	S.W., IN.	REMARKS
P-1	WATER CLOSET	1	-	4	FLOOR MTD. - FLUSH VALVE
P-2	WATER CLOSET	1	-	4	FLOOR MTD. - FLUSH VALVE - HANDICAPPED
P-3	URINAL	3/4	-	2	WALL HUNG - HANDICAPPED
P-4	MOP SINK	1/2	1/2	3	-
P-5	LAVATORY	1/2	1/2	1 1/4	COUNTERTOP
P-6	LAVATORY	1/2	1/2	1 1/4	WALL HUNG - HANDICAPPED
P-7	SINK	1/2	1/2	1 1/2	2-COMPARTMENT
P-8	ELECTRIC WATER COOLER	1/2	-	1 1/4	BI-LEVEL - WALL HUNG - HANDICAPPED
P-9	ELECTRIC WATER COOLER	1/2	-	1 1/4	HANDICAPPED

