

YKK AP AMERICA RESIDENTIAL

PRECEDENCE SINGLE HUNG WINDOW

(NON-HVHZ) (NON-IMPACT)

INSTALLATION NOTES:

1. ONE (1) INSTALLATION ANCHORS ARE REQUIRED AT EACH ANCHOR LOCATION SHOWN.
2. THE NUMBER OF INSTALLATION ANCHORS DEPICTED IS THE MINIMUM NUMBER OF ANCHORS TO BE USED FOR PRODUCT INSTALLATION.
3. INSTALL INDIVIDUAL INSTALLATION ANCHORS WITHIN A TOLERANCE OF ±1/2 INCH OF THE DEPICTED LOCATION IN THE ANCHOR LAYOUT DETAIL (I.E., WITHOUT CONSIDERATION OF TOLERANCES). TOLERANCES ARE NOT CUMULATIVE FROM ONE INSTALLATION ANCHOR TO THE NEXT.
4. SHIM AS REQUIRED IN ORDER TO ACHIEVE SQUARE AND PLUMB WITH LOAD BEARING SHIM(S). MAXIMUM ALLOWABLE SHIM STACK TO BE 1/4 INCH. SHIM WHERE SPACE OF 1/16 INCH OR GREATER OCCURS. SHIM(S) SHALL BE CONSTRUCTED OF HIGH DENSITY PLASTIC OR BETTER.
5. **FINLESS INSTALLATION:** FOR INSTALLATION INTO WOOD FRAMING USE *#10 WOOD SCREWS* OF SUFFICIENT LENGTH TO ACHIEVE *1 1/2 INCH* MINIMUM EMBEDMENT INTO WOOD SUBSTRATE.
6. **FINLESS INSTALLATION:** FOR INSTALLATION THROUGH 1X BUCK TO CONCRETE/MASONRY, OR DIRECTLY INTO CONCRETE/MASONRY, USE *3/16 INCH DIAMETER ITW TAPCON* OF SUFFICIENT LENGTH TO ACHIEVE *1 1/4 INCH* MINIMUM EMBEDMENT.
7. **FINLESS INSTALLATION:** FOR INSTALLATION THROUGH STEEL STUD USE *#10 TEK SCREWS* OF SUFFICIENT LENGTH TO ACHIEVE *3 THREADS* MINIMUM PENETRATION BEYOND STEEL STRUCTURE.
8. FOR MASONRY OR CONCRETE OPENINGS, 1X WOOD BUCK MAY BE USED (OPTIONAL AS LONG AS THE MINIMUM EMBEDMENT AND EDGE DISTANCE REQUIREMENTS ARE STILL MET WITHIN THE CORRESPONDING HOST SUBSTRATE. SEE GENERAL NOTE #3 ON SHEET 1 FOR MORE INFORMATION.
9. MINIMUM EMBEDMENT AND EDGE DISTANCE EXCLUDE WALL FINISHES, INCLUDING BUT NOT LIMITED TO STUCCO, FOAM, BRICK VENEER, AND SIDING.
10. INSTALLATION ANCHORS AND ASSOCIATED HARDWARE MUST BE MADE OF CORROSION RESISTANT MATERIAL OR HAVE A CORROSION RESISTANT COATING.
11. FOR HOLLOW BLOCK AND GROUT FILLED BLOCK, DO NOT INSTALL INSTALLATION ANCHORS INTO MORTAR JOINTS. EDGE DISTANCE IS MEASURED FROM FREE EDGE OF BLOCK OR EDGE OF MORTAR JOINT INTO FACE SHELL OF BLOCK.
12. INSTALLATION ANCHORS SHALL BE INSTALLED IN ACCORDANCE WITH ANCHOR MANUFACTURER'S INSTALLATION INSTRUCTIONS, AND ANCHORS SHALL NOT BE USED IN SUBSTRATES WITH STRENGTHS LESS THAN THE MINIMUM STRENGTH SPECIFIED BY THE ANCHOR MANUFACTURER.
13. INSTALLATION ANCHOR CAPACITIES FOR PRODUCTS HEREIN ARE BASED ON SUBSTRATE MATERIALS WITH THE FOLLOWING PROPERTIES:

A. WOOD - MINIMUM SPECIFIC GRAVITY OF 0.55.

B. CONCRETE -MINIMUM COMPRESSIVE STRENGTH OF 3000 PSI.

C. MASONRY - STRENGTH CONFORMANCE TO ASTM C-90.

D. STEEL - MINIMUM YIELD STRENGTH OF 33 KSI. MINIMUM WALL THICKNESS OF 33 MILS. (20 GUAGE)

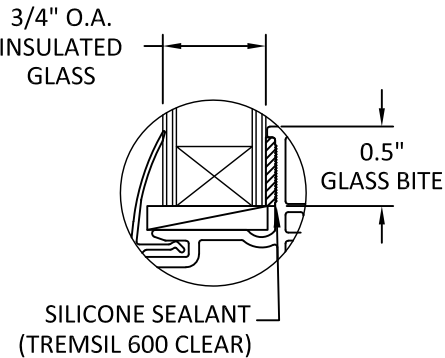
GENERAL NOTES:

1. THE PRODUCT SHOWN HEREIN IS DESIGNED AND MANUFACTURED TO COMPLY WITH THE CURRENT EDITION FLORIDA BUILDING CODE (FBC), EXCLUDING HVHZ AND HAS BEEN EVALUATED ACCORDING TO THE FOLLOWING:

AAMA/WDMA/CSA 101/I.S.2/A440-08/11
2. ADEQUACY OF THE EXISTING STRUCTURAL CONCRETE/MASONRY, 2X FRAMING AND METAL STUD FRAMING AS A MAIN WIND FORCE RESISTING SYSTEM CAPABLE OF WITHSTANDING AND TRANSFERRING APPLIED PRODUCT LOADS TO THE FOUNDATION IS THE RESPONSIBILITY OF THE ENGINEER OR ARCHITECT OF RECORD FOR THE PROJECT OF INSTALLATION.
3. 1X & 2X BUCKS (WHEN USED) SHALL BE DESIGNED AND ANCHORED TO PROPERLY TRANSFER ALL LOADS TO THE STRUCTURE. BUCK DESIGN AND INSTALLATION IS THE RESPONSIBILITY OF THE ENGINEER OR ARCHITECT OF RECORD FOR THE PROJECT OF INSTALLATION.
4. THE INSTALLATION DETAILS DESCRIBED HEREIN ARE GENERIC AND MAY NOT REFLECT ACTUAL CONDITIONS FOR A SPECIFIC SITE. IF SITE CONDITIONS CAUSE INSTALLATION TO DEVIATE FROM THE REQUIREMENTS DETAILED HEREIN, A LICENSED ENGINEER OR ARCHITECT SHALL PREPARE SITE SPECIFIC DOCUMENTS FOR USE WITH THIS DOCUMENT IN NON-HVHZ AREAS.
5. APPROVED IMPACT PROTECTIVE SYSTEM **IS REQUIRED** ON THIS PRODUCT IN AREAS REQUIRING IMPACT RESISTANCE.
6. WINDOW FRAME MATERIAL: PVC
7. DESIGNATIONS "X" AND "O" STAND FOR THE FOLLOWING:

X: OPERABLE PANEL

O: FIXED PANEL
8. GLAZING SHALL MEETS ASTM E1300 REQUIREMENTS, SEE SHEET 1 FOR GLAZING DETAILS.



GLAZING DETAIL

TABLE OF CONTENTS	
SHEET	SHEET DESCRIPTION
1	INSTALLATION, GENERAL NOTES & GLAZING DETAIL
2	ELEVATION & ANCHOR LAYOUT - SINGLE
3	ELEVATION, ANCHOR LAYOUT - TRIPLE & ANCHOR SCHEDULE
4	VERTICAL SECTIONS
5	HORIZONTAL SECTIONS

DESIGN PRESSURE TABLE					
TYP. FRAME SIZE		DESIGN PRESSURE	CONFIGURATION	INSTALLATION METHOD	IMPACT RATING
WIDTH	HEIGHT				
52.5"	75"	+35/-35 PSF	O/X	THRU FRAME	NOT RATED
43.5"	79.5"	+50/-50 PSF	O/X	THRU FRAME	NOT RATED
47.5"	79.5"	+35/-35 PSF	O/X	THRU FRAME	NOT RATED
107.5"	79.5"	+35/-35 PSF	O/X-O/X-O/X	THRU FRAME	NOT RATED

GLAZING NOTES:

1. GLASS THICKNESS AND TYPE SHALL COMPLY WITH ASTM E1300 GLASS STRENGTH REQUIREMENTS.
2. SETTING BLOCK DUROMETER HARDNESS OF 70-90 (SHORE A) AS REFERENCED IN FBC CHAPTER 24.
3. SETTING BLOCK TO BE LOCATED AT 1/4 SPAN LENGTH FOR GLASS WIDER THAN 36" PER FBC CHAPTER 24.
4. ALL GLAZING CONFIGURATIONS SHALL COMPLY WITH SAFETY GLAZING REQUIREMENTS OUTLINED IN CURRENT FBC.

INTERCEPT STAINLESS STEEL OR
TIN PLATED SPACER:
AROUND THE PERIMETER OF THE GLASS

PRIMARY SEALANT:
POLYISOBUTYLENE (PIB)

SECONDARY SEALANT:
STRUCTURAL SILICONE INTENDED FOR
FABRICATION OF INSULATED GLASS
UNITS.



YKK AP AMERICA INC.
4234 OCMULGEE E BLVD.
MACON, GA 31217
PH: (866) 348-9091

TITLE:
PRECEDENCE SINGLE HUNG WINDOW
(NON-HVHZ) (NON-IMPACT)

INSTALLATION, GENERAL NOTES &
GLAZING DETAIL

PREPARED BY:
BUILDING DROPS, INC.
398 E. DANIA BEACH BLVD., STE. 338
DANIA BEACH, FL 33004
PH: (954)399-8478
FAX: (954)744-4738
WEB: www.buildingdrops.com

REMARKS	BY	DATE

THE INSTALLATION DETAILS DESCRIBED HEREIN ARE GENERIC AND MAY NOT REFLECT ACTUAL CONDITIONS FOR A SPECIFIC SITE. IF SITE CONDITIONS CAUSE INSTALLATION TO DEVIATE FROM THE REQUIREMENTS DETAILED HEREIN, A LICENSED ENGINEER OR ARCHITECT SHALL PREPARE SITE SPECIFIC DOCUMENTS FOR USE WITH THIS DOCUMENT.

Digitally signed by Hermes F Norero
Reason: I am approving this document
Date: 2020.09.26 08:47:54 +02'00'

HERMES F. NORERO, P.E.
FLORIDA P.E. No 73778
BUILDING DROPS, INC
398 E. DANIA BEACH BLVD. # 338
DANIA BEACH, FL 33004
FBPE CERT. OF AUTHORIZATION No. 29578

FL #:
FL17169

DATE: **03.10.18**

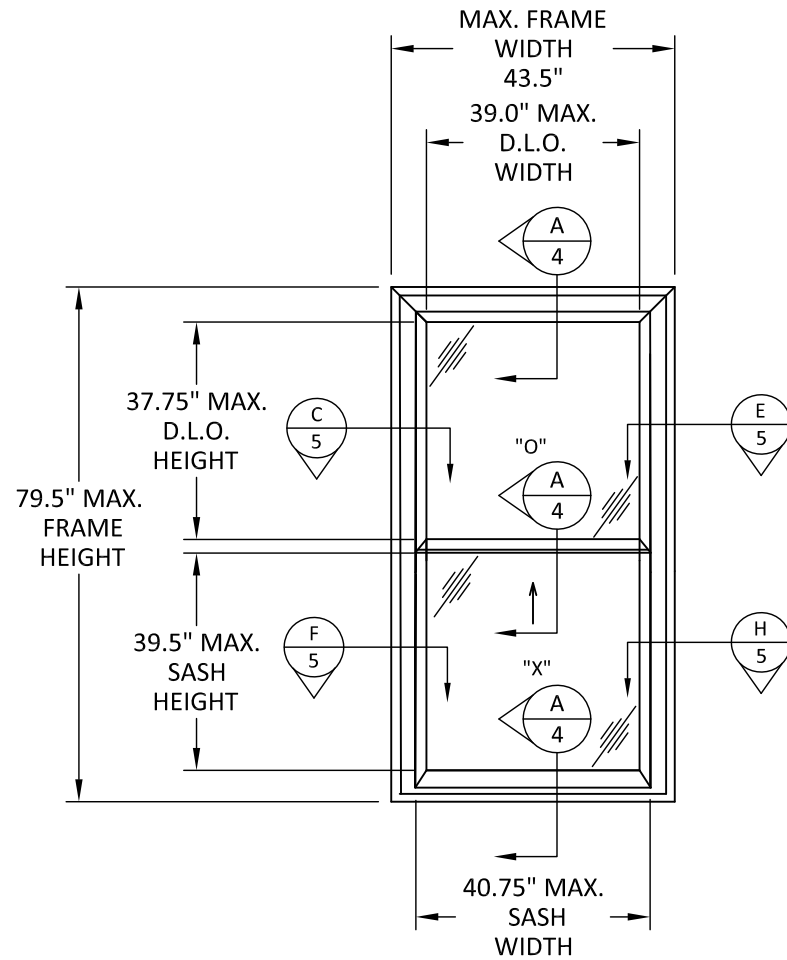
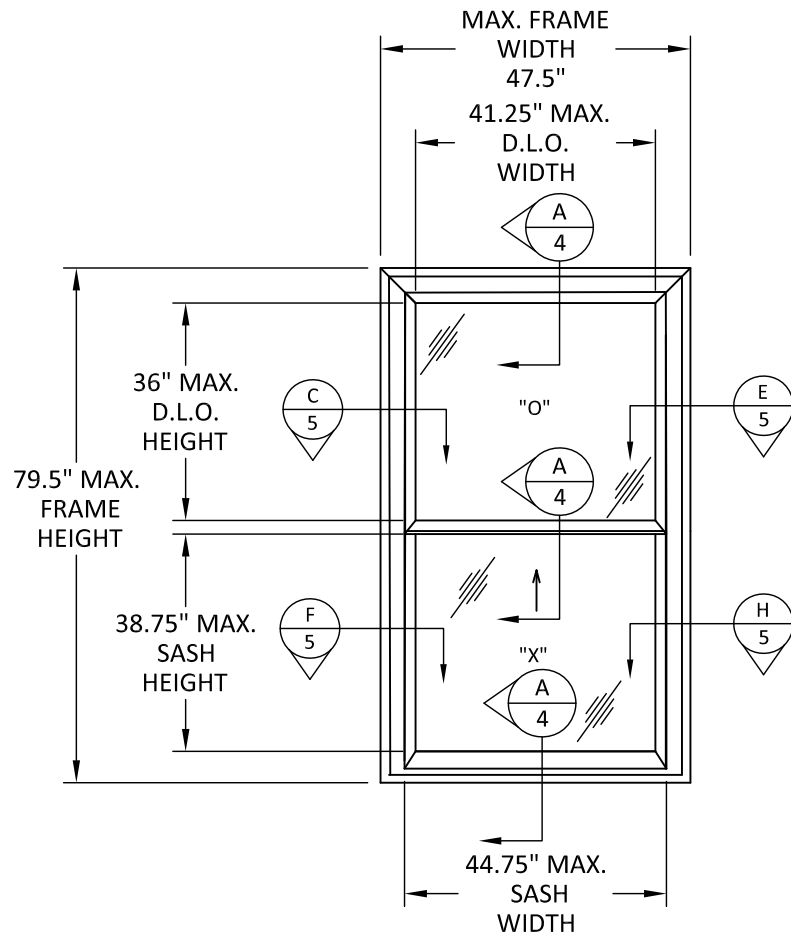
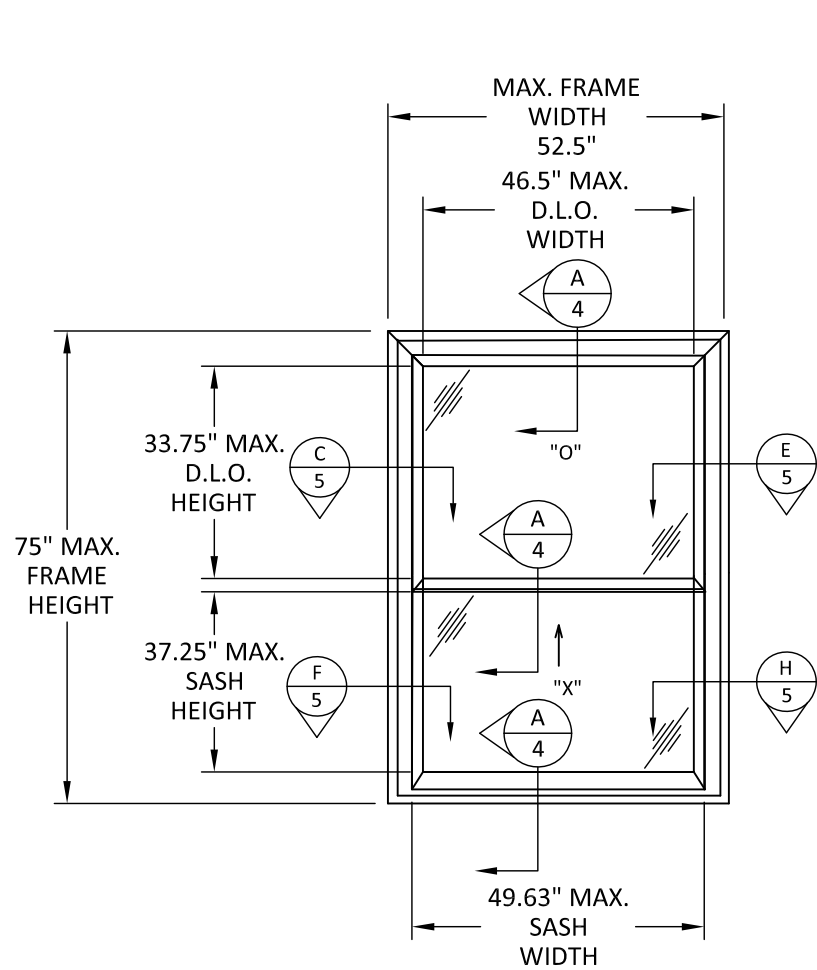
DWG. BY: **HR**CHK. BY: **HFN**

SCALE: **NTS**

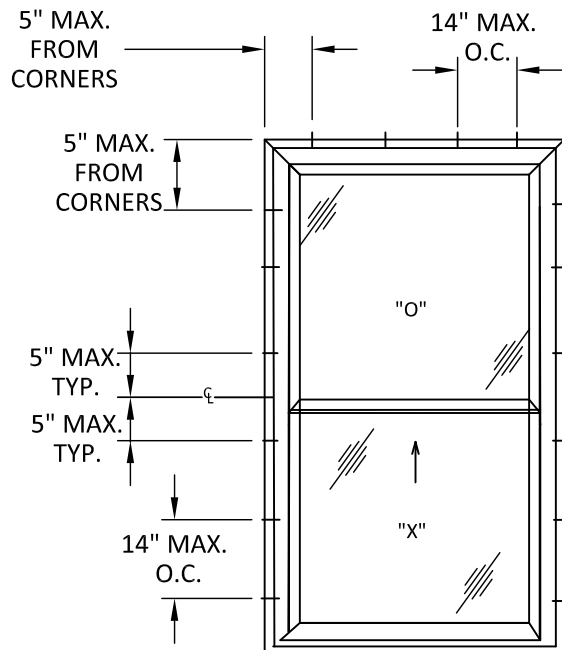
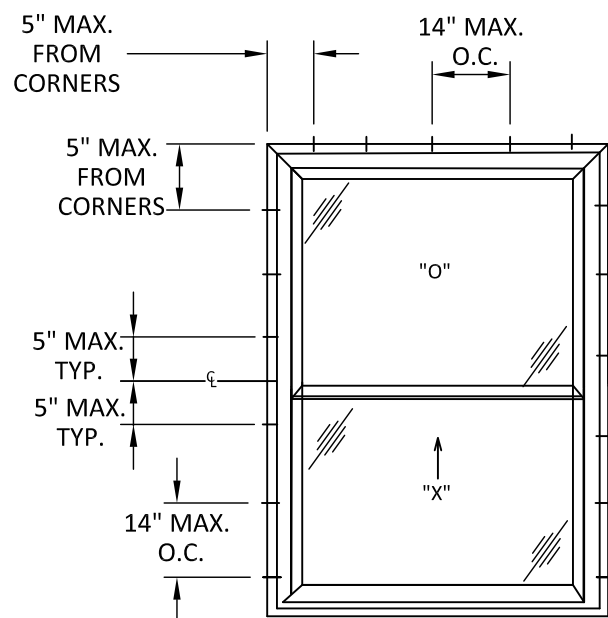
DWG. #: **YKK261**

SHEET:
1

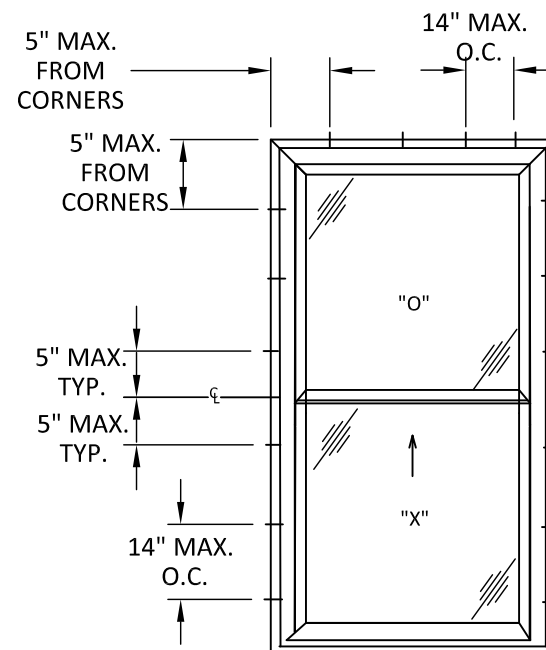
OF 5



ELEVATION
SINGLE HUNG WINDOW



TYPICAL ANCHOR LAYOUT
SINGLE HUNG WINDOW



YKK ap Quality inspires™

YKK AP AMERICA INC.

4234 OCMULGEE E BLVD.
MACON, GA 31217
PH: (866) 348-9091

TITLE: PRECEDENCE SINGLE HUNG WINDOW (NON-HVHZ) (NON-IMPACT)

ELEVATION & ANCHOR LAYOUT - SINGLE

PREPARED BY: BUILDING DROPS, INC.
398 E. DANIA BEACH BLVD., STE. 338
DANIA BEACH, FL 33004
PH: (954)399-8478
FAX: (954)744-4738
WEB: www.buildingdrops.com

REMARKS	BY	DATE

THE INSTALLATION DETAILS DESCRIBED HEREIN ARE GENERIC AND MAY NOT REFLECT ACTUAL CONDITIONS FOR A SPECIFIC SITE. IF SITE CONDITIONS CAUSE INSTALLATION TO DEVIATE FROM THE REQUIREMENTS DETAILED HEREIN, A LICENSED ENGINEER OR ARCHITECT SHALL PREPARE SITE SPECIFIC DOCUMENTS FOR USE WITH THIS DOCUMENT.

HERMES F. NORERO
LICENSE
No. 73778
STATE OF FLORIDA
PROFESSIONAL ENGINEER

HERMES F. NORERO, P.E.
FLORIDA P.E. No 73778
BUILDING DROPS, INC
398 E. DANIA BEACH BLVD. # 338
DANIA BEACH, FL 33004
FBPE CERT. OF AUTHORIZATION No. 29578

FL #: **FL17169**

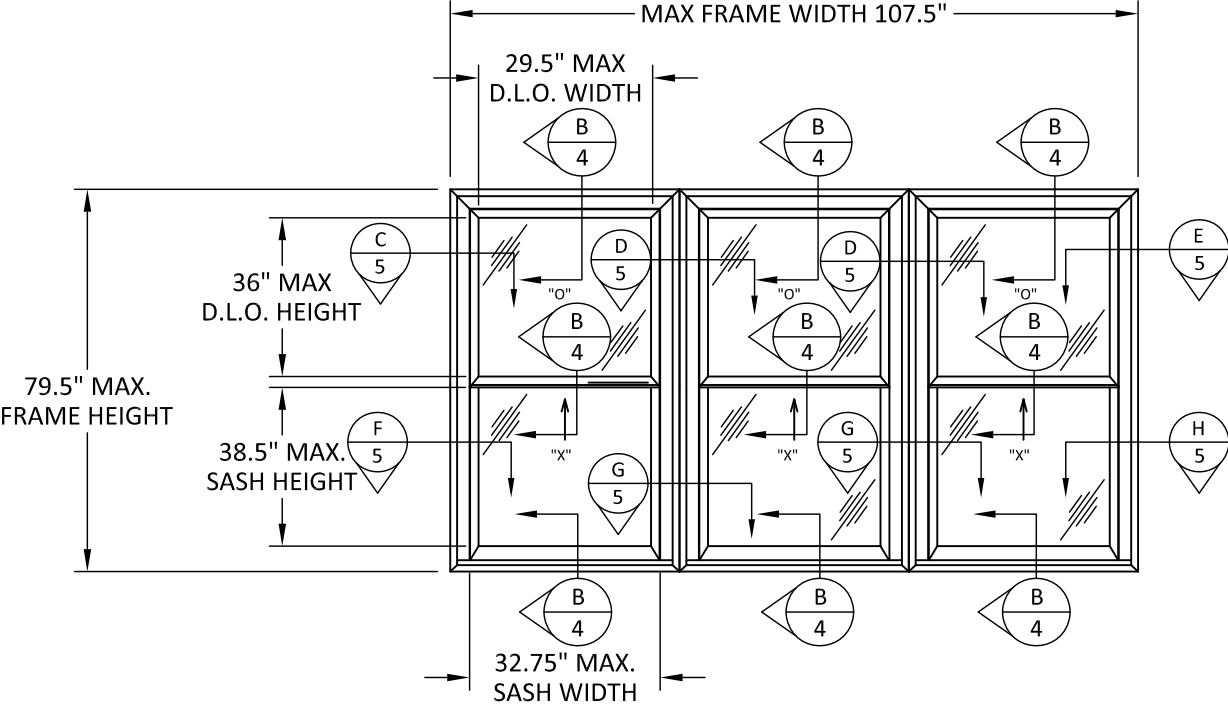
DATE: **03.10.18**

DWG. BY: **HR** CHK. BY: **HFN**

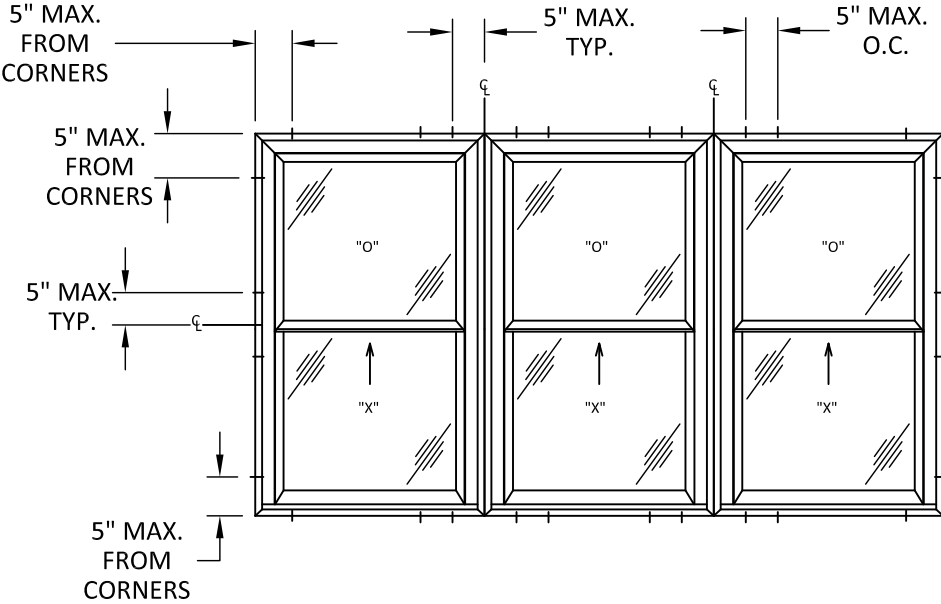
SCALE: **NTS**

DWG. #: **YKK261**

SHEET:



ELEVATION
SINGLE HUNG WINDOW



ANCHOR LAYOUT
THROUGH FRAME - SINGLE HUNG WINDOW

ANCHOR SCHEDULE				
METHOD	SUBSTRATE	ANCHOR SCHEDULE	MIN EMBEDMENT	MIN. EDGE DISTANCE
THROUGH FRAME	WOOD: MIN. SG = 0.55	#10 WOOD SCREW PAN HEAD	1.5"	0.75"
	METAL: 18 GAUGE STEEL, MIN. Fy = 33KSI	#10 TEK SCREW PAN HEAD	3 THREADS MIN PENETRATION BEYOND METAL	0.50"
	CONCRETE: f'c=3000PSI	3/16" ITW TAPCON	1.25"	1.75"
	MASONRY: CMU per ASTM C90 MIN. 2000 PSI	3/16" ITW TAPCON	1.25"	1.75"



YKK AP AMERICA INC.
4234 OCMULGEE E BLVD.
MACON, GA 31217
PH: (866) 348-9091

TITLE:
PRECEDENCE SINGLE HUNG WINDOW
(NON-HVHZ) (NON-IMPACT)
ELEVATION, ANCHOR LAYOUT - TRIPLE &
ANCHOR SCHEDULE

PREPARED BY:
BUILDING DROPS, INC.
398 E. DANIA BEACH BLVD., STE. 338
DANIA BEACH, FL 33004
PH: (954)399-8478
FAX: (954)744-4738
WEB: www.buildingdrops.com



REMARKS	BY	DATE

THE INSTALLATION DETAILS DESCRIBED HEREIN ARE GENERIC AND MAY NOT REFLECT ACTUAL CONDITIONS FOR A SPECIFIC SITE. IF SITE CONDITIONS CAUSE INSTALLATION TO DEVIATE FROM THE REQUIREMENTS DETAILED HEREIN, A LICENSED ENGINEER OR ARCHITECT SHALL PREPARE SITE SPECIFIC DOCUMENTS FOR USE WITH THIS DOCUMENT.

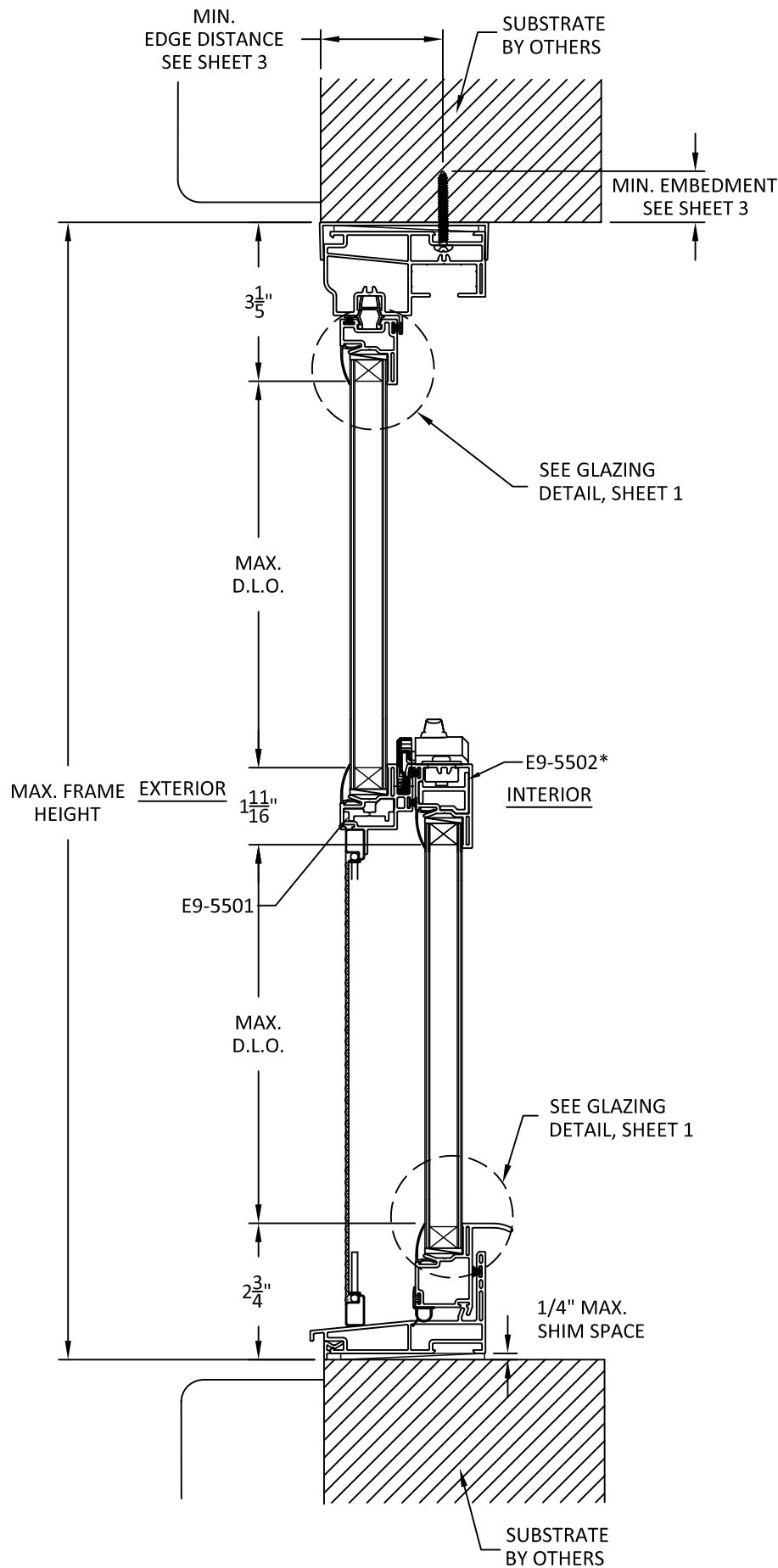


HERMES F. NORERO, P.E.
FLORIDA P.E. No 73778
BUILDING DROPS, INC
398 E. DANIA BEACH BLVD. # 338
DANIA BEACH, FL 33004
FBPE CERT. OF AUTHORIZATION No. 29578

FL #:	FL17169
DATE:	03.10.18
DWG. BY:	HR
CHK. BY:	HFN
SCALE:	NTS
DWG. #:	YKK261
SHEET:	3

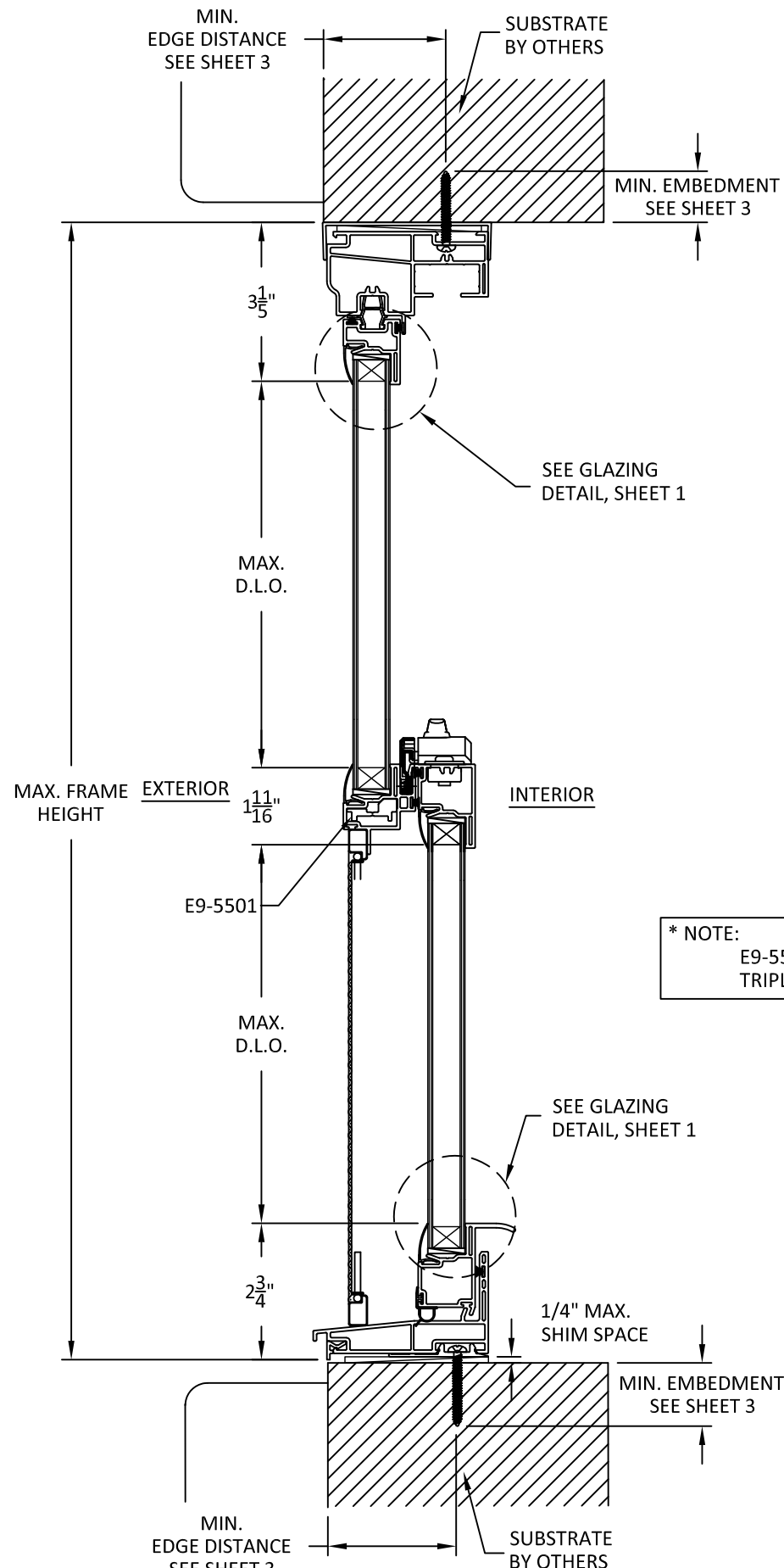
9/24/2020 12:01 PM

s:\projects\ykk ap america, inc\cc-20-0237 residential fbc submittal - fbc 2020 code change\18114-r4\dwgs\ykk261.dwg



A
4

VERTICAL SECTION
THROUGH FRAME SINGLE SINGLE HUNG



B
4

VERTICAL SECTION
THROUGH FRAME TRIPLE SINGLE HUNG

* NOTE:
E9-5502 NOT REQUIRED IN
TRIPLE SINGLE HUNG UNIT.



YKK AP AMERICA INC.
4234 OCMULGEE E BLVD.
MACON, GA 31217
PH: (866) 348-9091

TITLE:
PRECEDENCE SINGLE HUNG WINDOW
(NON-HVHZ) (NON-IMPACT)

VERTICAL SECTIONS

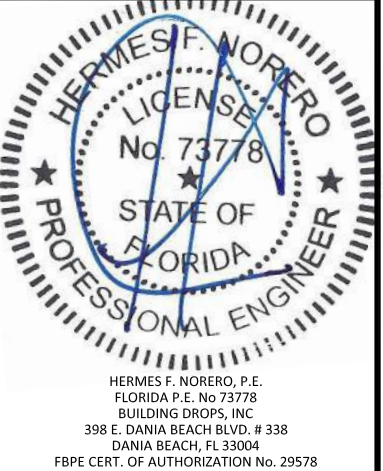
PREPARED BY:

BUILDING DROPS, INC.
398 E. DANIA BEACH BLVD., STE. 338
DANIA BEACH, FL 33004
PH: (954)399-8478
FAX: (954)744-4738
WEB: www.buildingdrops.com



REMARKS	BY	DATE

THE INSTALLATION DETAILS DESCRIBED HEREIN ARE GENERIC AND MAY NOT REFLECT ACTUAL CONDITIONS FOR A SPECIFIC SITE. IF SITE CONDITIONS CAUSE INSTALLATION TO DEVIATE FROM THE REQUIREMENTS DETAILED HEREIN, A LICENSED ENGINEER OR ARCHITECT SHALL PREPARE SITE SPECIFIC DOCUMENTS FOR USE WITH THIS DOCUMENT.



FL #:
FL17169

DATE: **03.10.18**

DWG. BY: **HR** CHK. BY: **HFN**

SCALE: **NTS**

DWG. #: **YKK261**

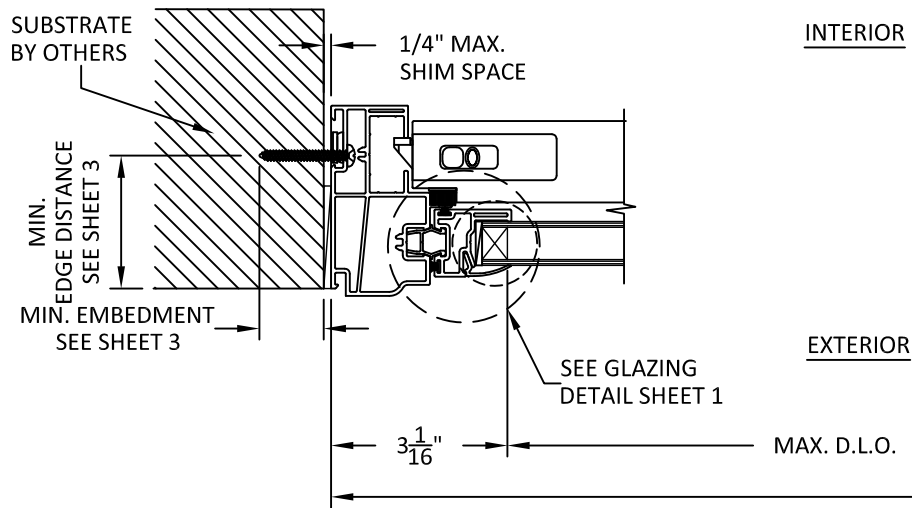
SHEET:

4

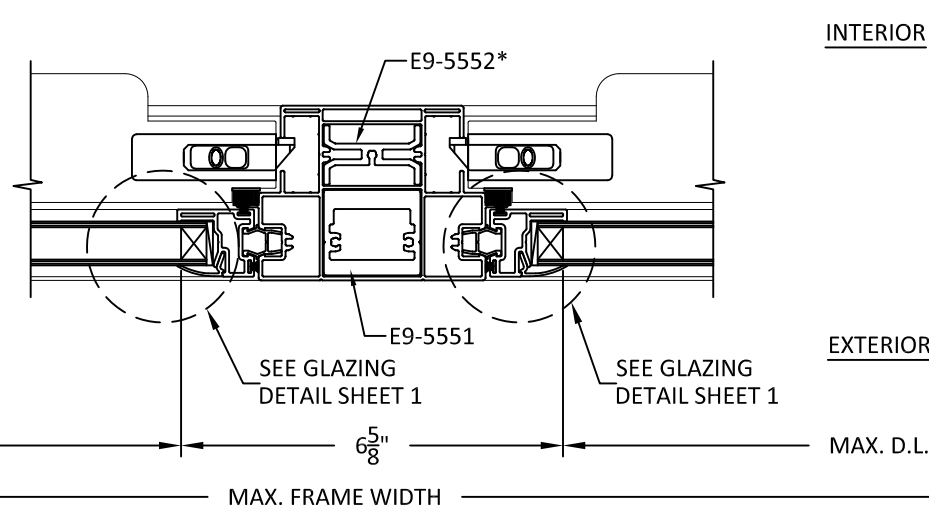
OF 5

9/24/2020 12:01 PM

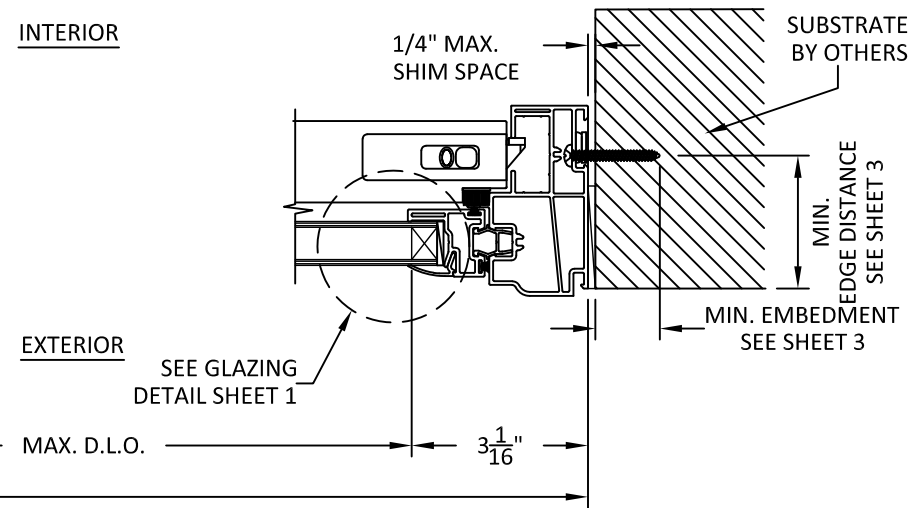
s:\projects\ykk ap america, inc\cc-20-0237 residential fbc submittal - fbc 2020 code change\18114-r4\dwgs\ykk261.dwg



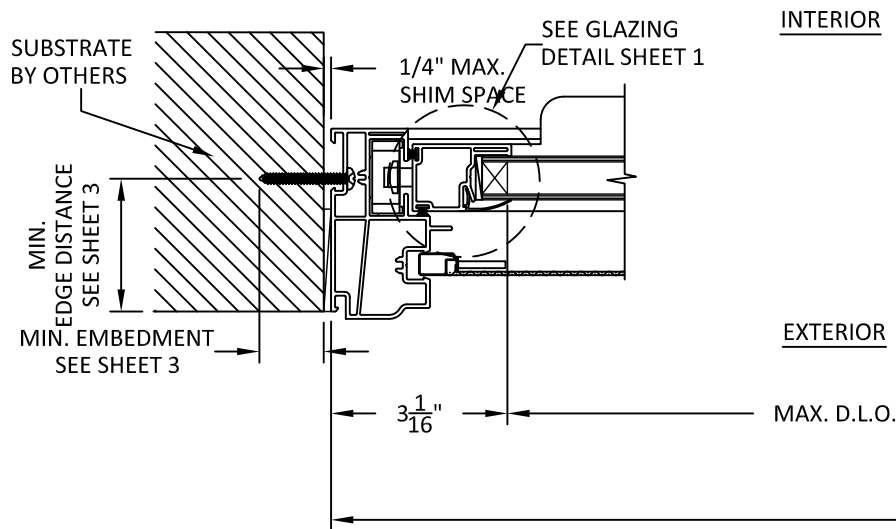
C
5 **HORIZONTAL SECTION**
FIXED JAMB-THROUGH FRAME



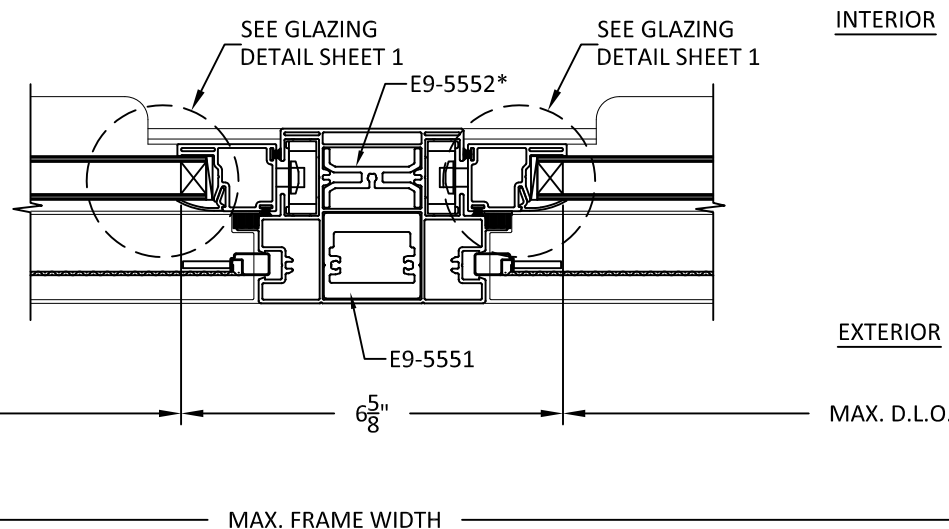
D
5 **HORIZONTAL SECTION**
FIXED MULLION



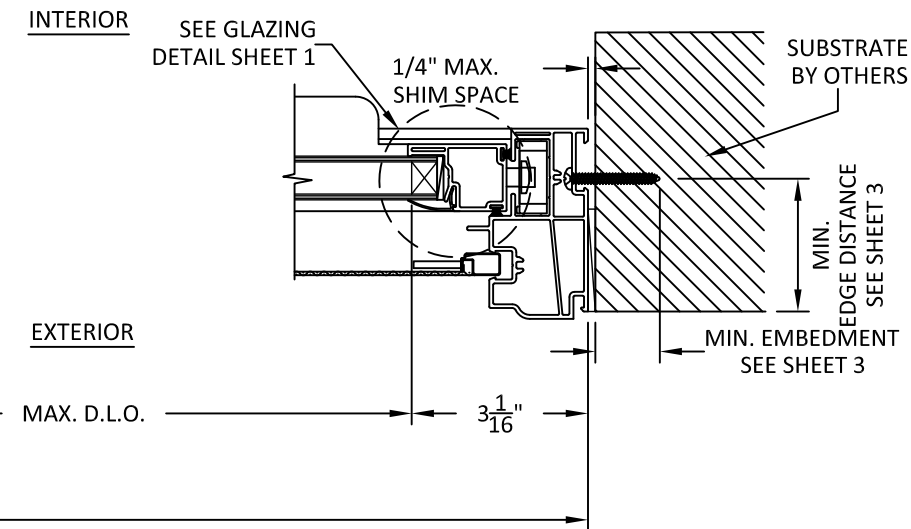
E
5 **HORIZONTAL SECTION**
FIXED JAMB-THRU FRAME



F
5 **HORIZONTAL SECTION**
VENT JAMB-THROUGH FRAME



G
5 **HORIZONTAL SECTION**
VENT MULLION



H
5 **HORIZONTAL SECTION**
VENT JAMB-THRU FRAME

* NOTE:
E9-5552 ONLY APPLICABLE TO DP +/- 50 PSF.



YKK AP AMERICA INC.
4234 OCMULGEE E BLVD.
MACON, GA 31217
PH: (866) 348-9091

TITLE:
PRECEDENCE SINGLE HUNG WINDOW
(NON-HVHZ) (NON-IMPACT)

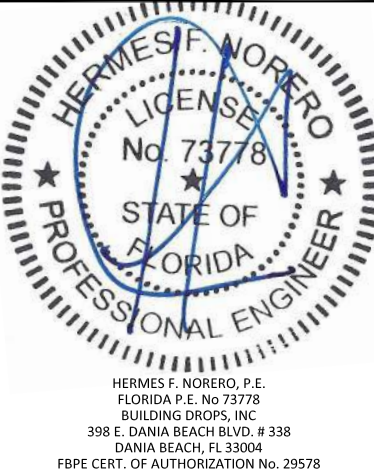
HORIZONTAL SECTIONS

PREPARED BY:
BUILDING DROPS, INC.
398 E. DANIA BEACH BLVD., STE. 338
DANIA BEACH, FL 33004
PH: (954)399-8478
FAX: (954)744-4738
WEB: www.buildingdrops.com



REMARKS	BY	DATE

THE INSTALLATION DETAILS DESCRIBED HEREIN ARE GENERIC AND MAY NOT REFLECT ACTUAL CONDITIONS FOR A SPECIFIC SITE. IF SITE CONDITIONS CAUSE INSTALLATION TO DEVIATE FROM THE REQUIREMENTS DETAILED HEREIN, A LICENSED ENGINEER OR ARCHITECT SHALL PREPARE SITE SPECIFIC DOCUMENTS FOR USE WITH THIS DOCUMENT.



FL #:
FL17169

DATE: **03.10.18**

DWG. BY: **HR** CHK. BY: **HFN**

SCALE: **NTS**

DWG. #: **YKK261**

SHEET:
5

OF 5