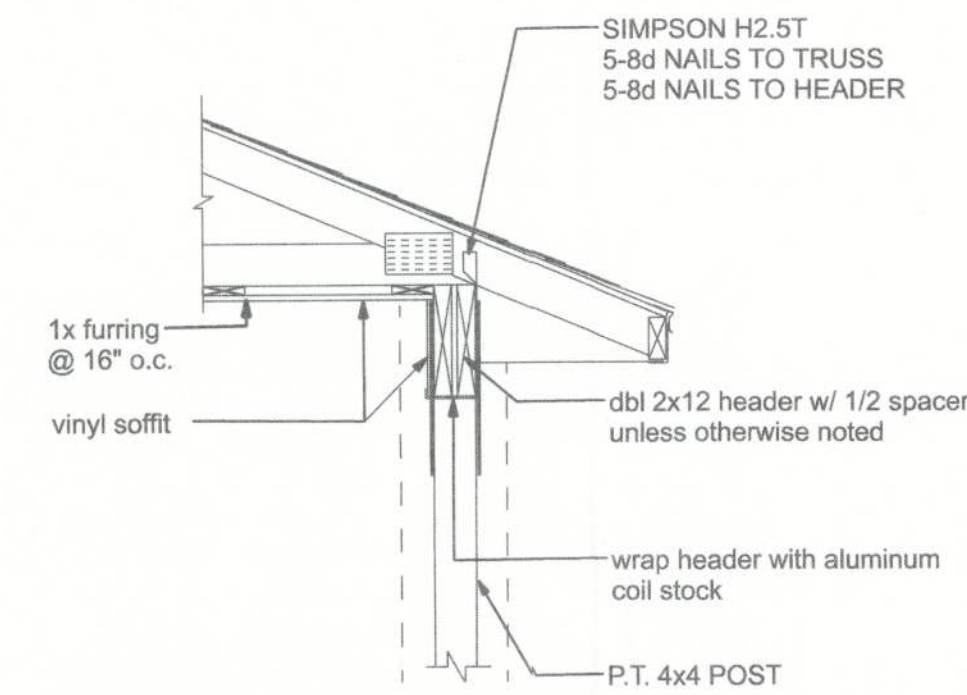
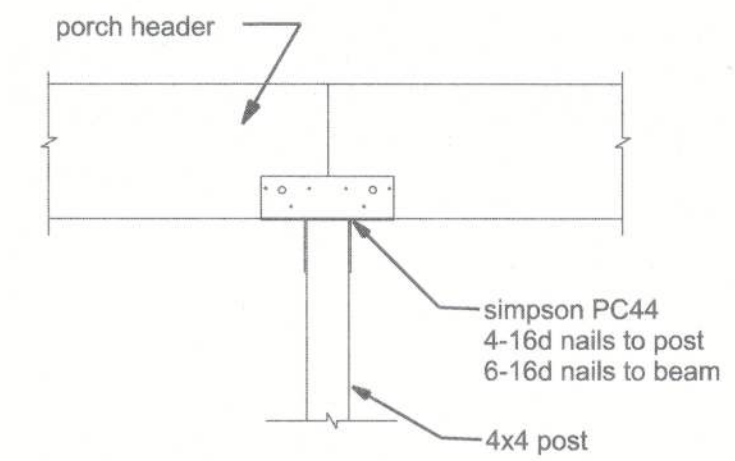


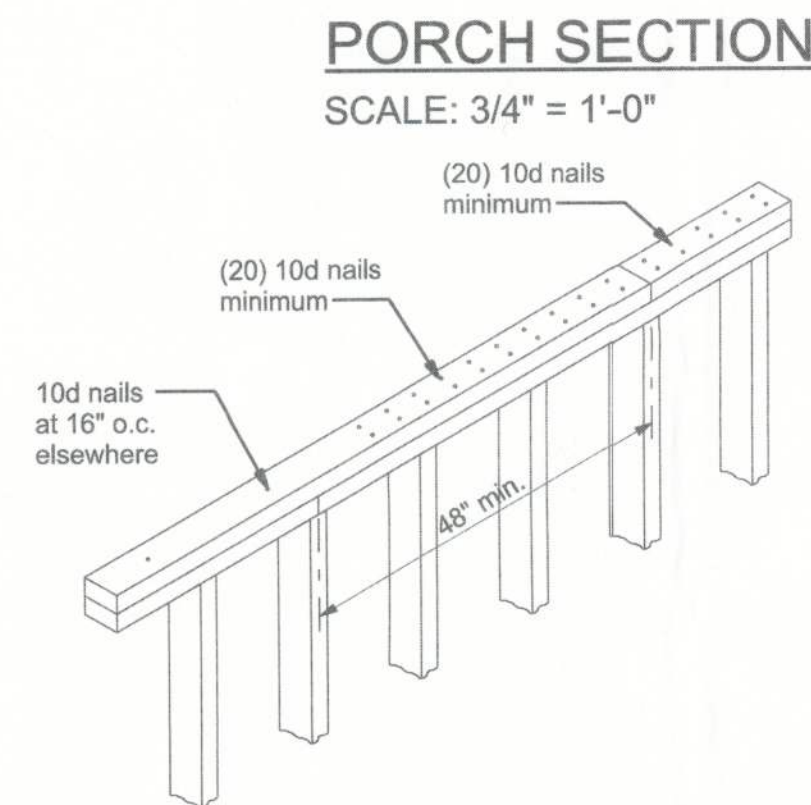
TYPICAL WALL SECTION
SCALE: 3/4" = 1'-0"



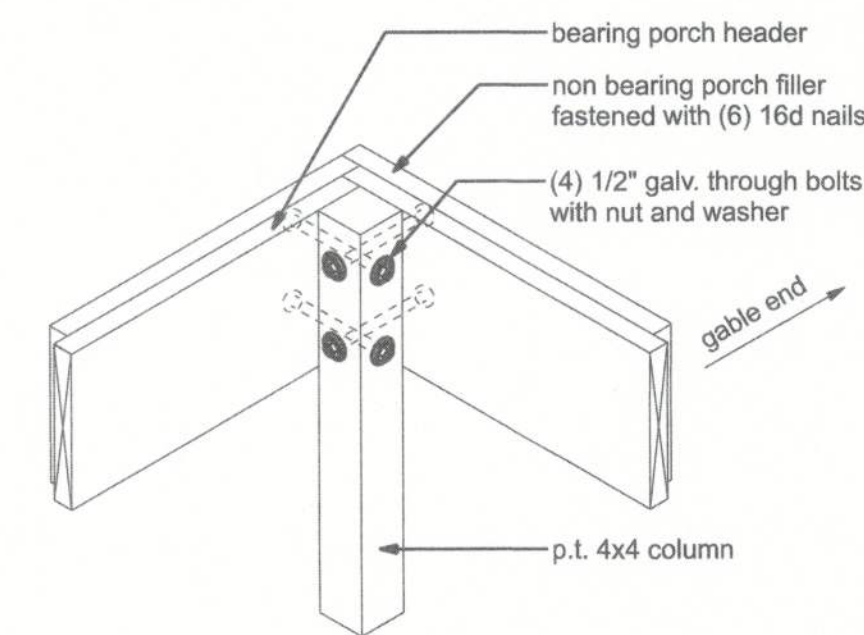
CORNER POST/HEADER DETAIL
NTS



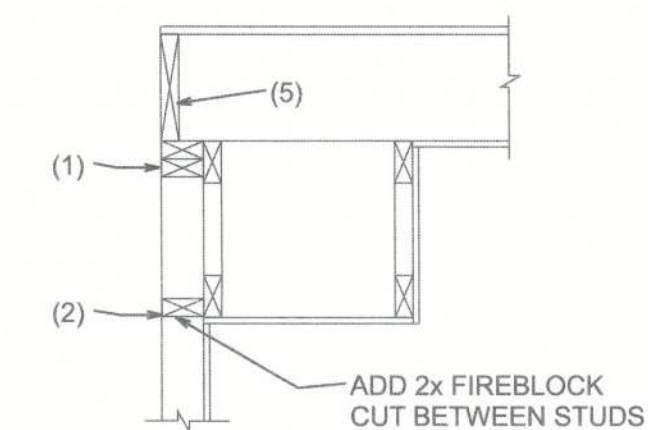
INTERMEDIATE POST
NTS



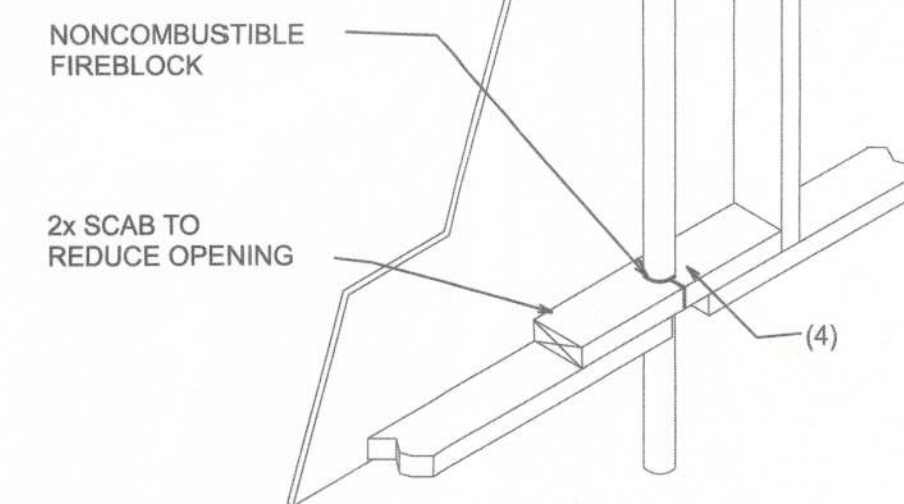
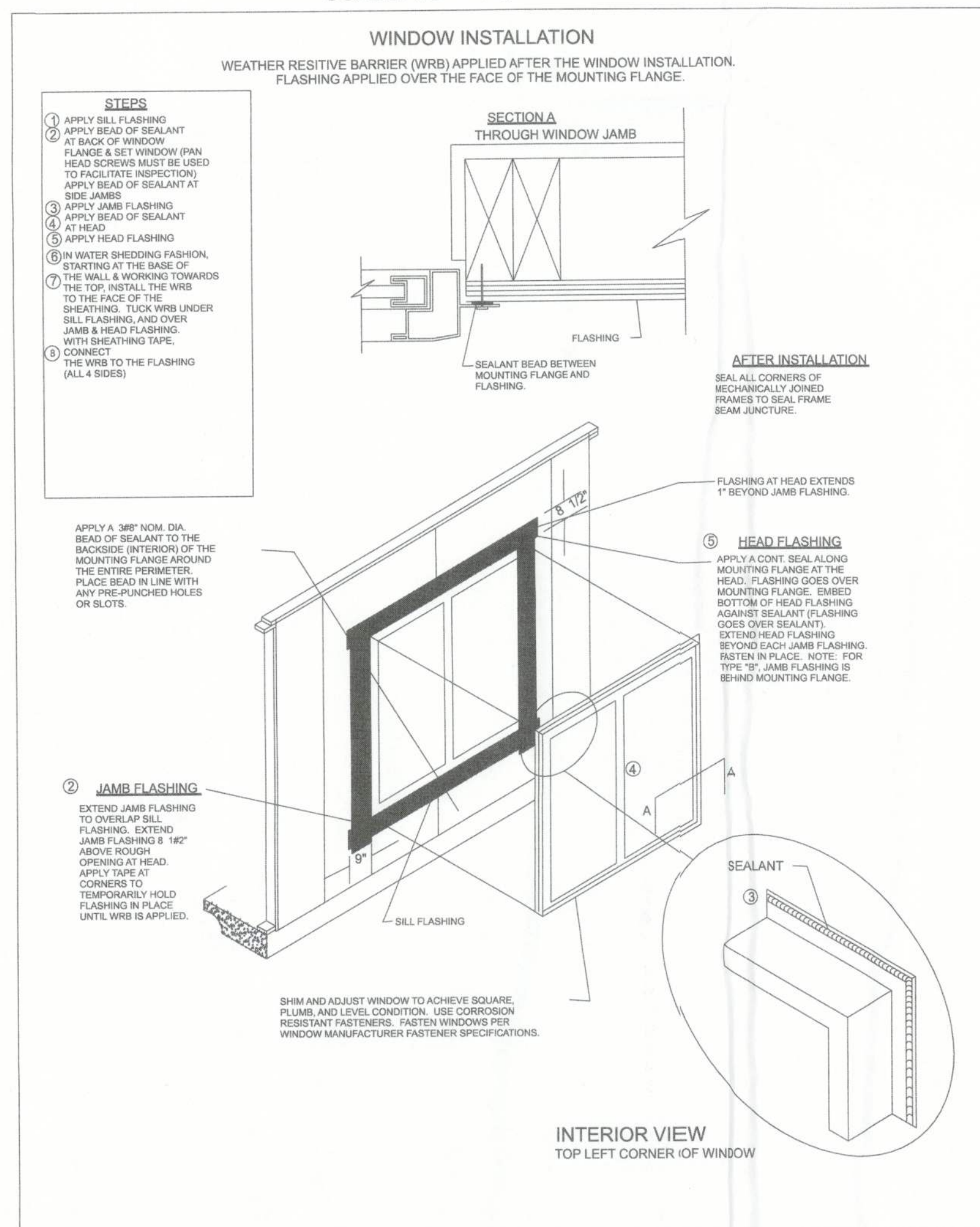
PORCH SECTION
SCALE: 3/4" = 1'-0"



CORNER POST (front porch option)
NTS



SOFFIT/DROPPED CLG.



PENETRATIONS

FIREBLOCKING NOTES:

- FIREBLOCKING SHALL BE INSTALLED IN WOOD FRAME CONSTRUCTION IN THE FOLLOWING LOCATIONS:
- IN CONCEALED SPACES OF STUD WALLS AND PARTITIONS INCLUDING FURRED SPACES AT CEILING AND FLOOR LEVELS.
 - AT ALL INTERCONNECTIONS BETWEEN CONCEALED VERTICAL AND HORIZONTAL SPACES SUCH AS OCCUR AT SOFFITS, DROP CEILINGS, COVE CEILINGS, ETC.
 - IN CONCEALED SPACES BETWEEN STAIR STRINGERS AT THE TOP AND BOTTOM OF THE RUN.
 - AT OPENINGS AROUND VENTS, PIPES, DUCTS, CHIMNEYS AND FIREPLACES AT CEILING AND FLOOR LEVELS WITH PYROPANEL MULTIFLEX SEALANT
 - AT ALL INTERCONNECTIONS BETWEEN CONCEALED VERTICAL STUD WALL OR PARTITION SPACES AND CONCEALED SPACES CREATED BY AN ASSEMBLY OF FLOOR JOISTS. FIREBLOCKING SHALL BE PROVIDED FOR THE FULL DEPTH OF THE JOISTS AT THE ENDS AND OVER THE SUPPORTS.



FIELDS RESIDENCE
FRAMING DETAILS

P.O. BOX 3271
ST. AUGUSTINE, FL. 32085
(386) 965-0644
COA # 53299



DATE
11/27/23

DRAWN BY
W.H.F.

APPROVED
W.H.F.

REVISIONS

SHEET
A-7

OF
11

PROJECT NO.
23.R055