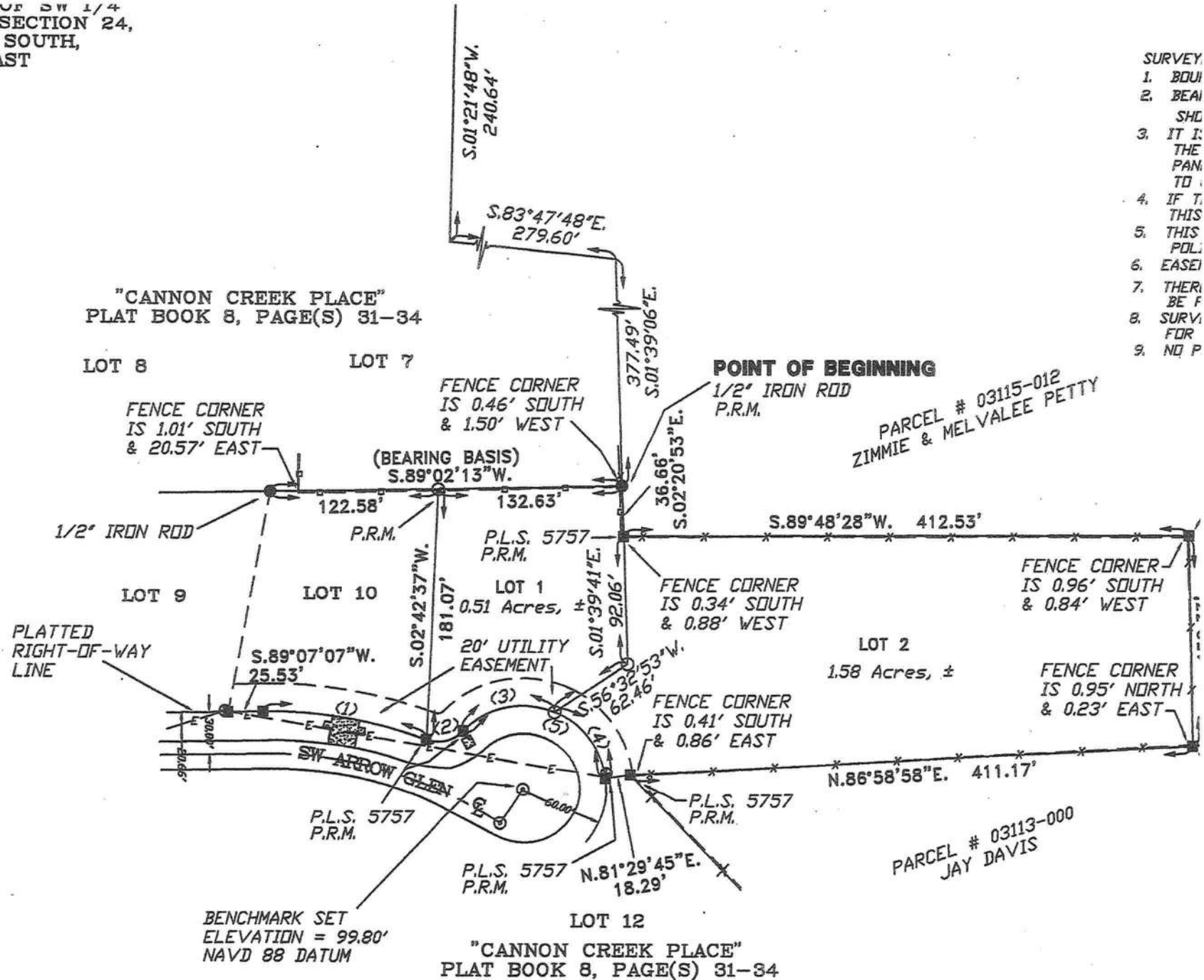


NW CORNER OF SW 1/4  
OF NW 1/4, SECTION 24,  
TOWNSHIP 4 SOUTH,  
RANGE 16 EAST



SURVEY  
1. BQUI  
2. BEAI  
3. IT I:  
THE  
PAN.  
TO I  
4. IF T.  
THIS  
5. THIS  
POL.  
6. EASEI  
7. THER  
BE F  
8. SURV  
FOR  
9. NO P

**NOTICE**

ALL PLATTED UTILITY EASEMENTS SHALL PROVIDE THAT SUCH EASEMENTS SHALL ALSO BE FOR THE CONSTRUCTION, INSTALLATION, MAINTENANCE, AND OPERATION OF CABLE TELEVISION SERVICES; PROVIDED, HOWEVER, NO SUCH CONSTRUCTION, INSTALLATION, MAINTENANCE, AND OPERATION OF CABLE TELEVISION SERVICES SHALL INTERFERE WITH THE FACILITIES AND SERVICES OF ELECTRIC, TELEPHONE, GAS OR OTHER PUBLIC UTILITY. IN THE EVENT THAT A CABLE TELEVISION COMPANY

**NOTICE:**

THIS PLAT AS RECORDED IN ITS GRAPHICAL FORM, IS THE OFFICIAL DEPICTION OF THE SUBDIVIDED LANDS DESCRIBED HEREIN AND WILL IN NO CIRCUMSTANCES BE SUPPLANTED IN AUTHORITY BY OTHER GRAPHICAL OR DIGITAL FORM OF THE PLAT. THERE MAY BE ADDITIONAL RESTRICTIONS THAT ARE NOT