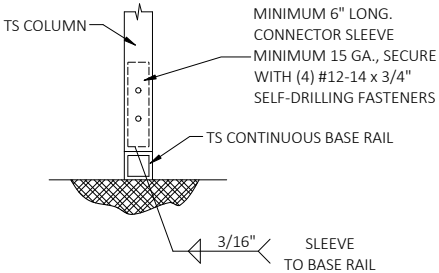
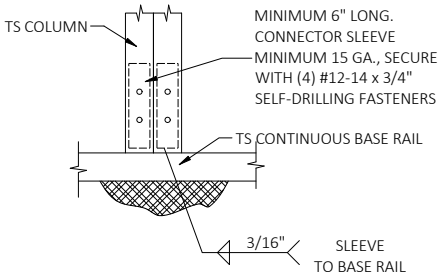


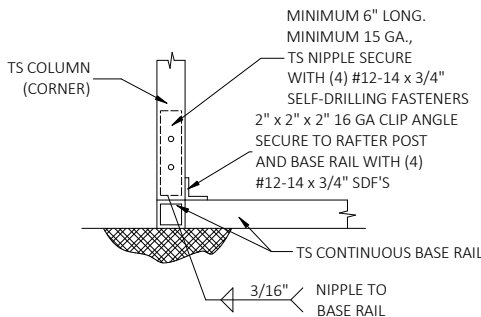
2 END POST/RAFTER
CONNECTION DETAIL
SCALE: NTS



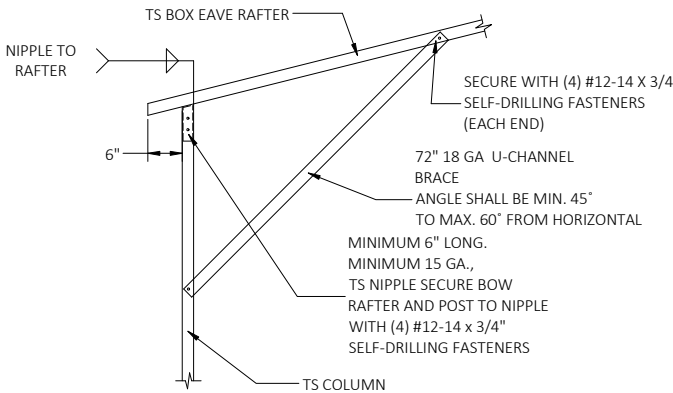
3A RAFTER POST/BASE RAIL
CONNECTION DETAIL
SCALE: NTS



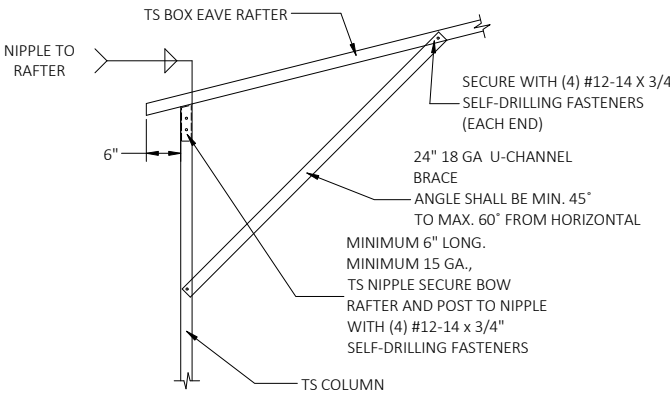
3B RAFTER POST/BASE RAIL
CONNECTION DETAIL
SCALE: NTS



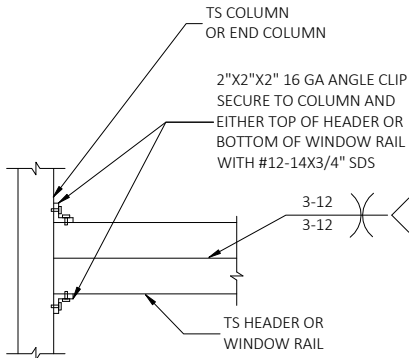
4 END POST/BASE RAIL
CONNECTION DETAIL
SCALE: NTS



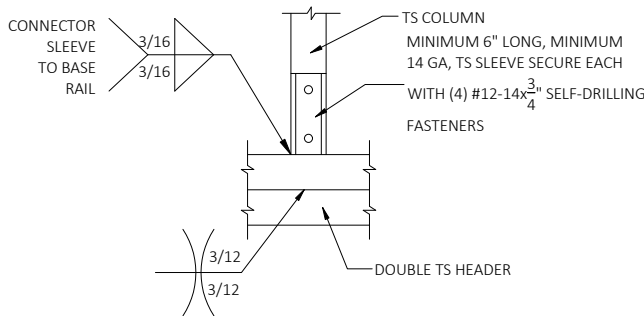
5A BOX EAVE RAFTER/CORNER POST
CONNECTION DETAIL
SCALE: NTS



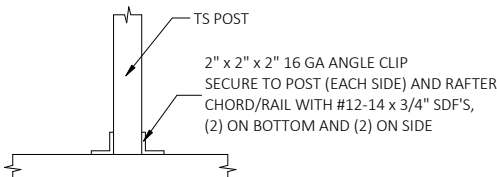
5B BOX EAVE RAFTER/CORNER POST
CONNECTION DETAIL
SCALE: NTS



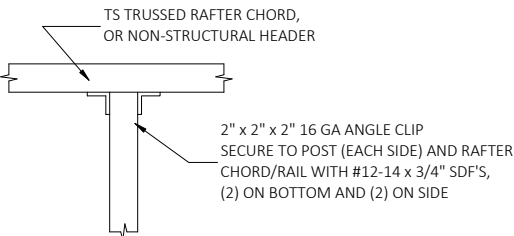
6 DOUBLE HEADER TO COLUMN
CONNECTION DETAIL
SCALE: NTS



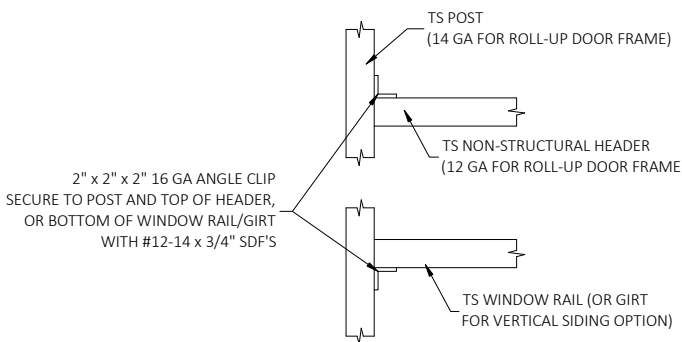
7 COLUMN/DOUBLE HEADER
CONNECTION DETAIL
SCALE: NTS



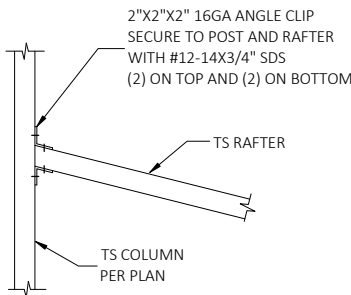
8 POST TO NON-STRUCTURAL HEADER, BASE,
RAIL OR WINDOW RAIL CONNECTION DETAIL
SCALE: NTS



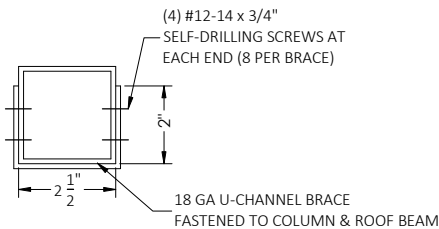
9 POST TO NON-STRUCTURAL HEADER, BASE,
RAIL OR WINDOW RAIL CONNECTION DETAIL
SCALE: NTS



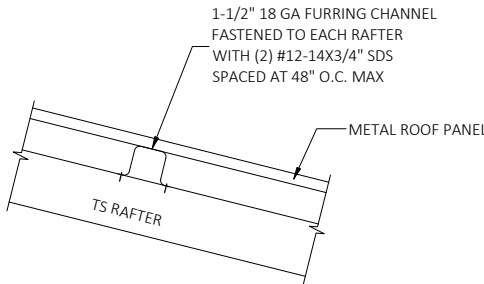
10 NON-STRUCTURAL HEADER OR WINDOW RAIL
TO POST CONNECTION DETAIL
SCALE: NTS



11 LEAN TO RAFTER/COLUMN CONNECTION
SCALE: NTS

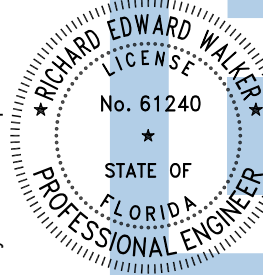


12 BRACE SECTION
SCALE: NTS



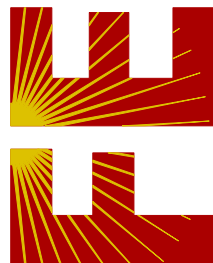
13 PANEL ATTACHMENT
(ALTERNATE FOR VERTICAL ROOF PANELS)
SCALE: NTS

This item has been digitally signed
and sealed by Richard E. Walker,
P.E. on the date adjacent to the seal.
Printed copies of this document are
not considered signed and sealed
and the signature must be verified
on any electronic copies.



Digitally signed
by Richard E
Walker
Date:
2024.11.26
15:49:39-05'00'

FLORIDA ENGINEERING LLC
4161 TAMiami TRAIL, UNIT 101
PORT CHARLOTTE, FLORIDA 33952
(941) 391-5980
FLEng.com



Orders@FLEng.com

CA CERT. #30782

PROJECT NO. 2431033

CONTRACTOR:
TUBULAR BUILDING SYSTEMS
P.O. BOX. 2254
LAKE CITY, FL 32056

PROJECT ADDRESS:
JUDD #1
PID #22-5S-17-09325-002
LAKE CITY, FL 32025

DESIGN DATE: 11/18/2024

REVISION 1: DATE

REVISION 2: DATE

DRAWN BY: TCP

SCALE: NTS

SHEET:

04