

HART 2 HART ACADEMY PHASE II

A SITE PLAN FOR:
DALLAS HART

HART 2 HART ACADEMY INC.
747 SW SATELLITE LN
LAKE CITY, FL 32024
PHONE: 386.365.2935

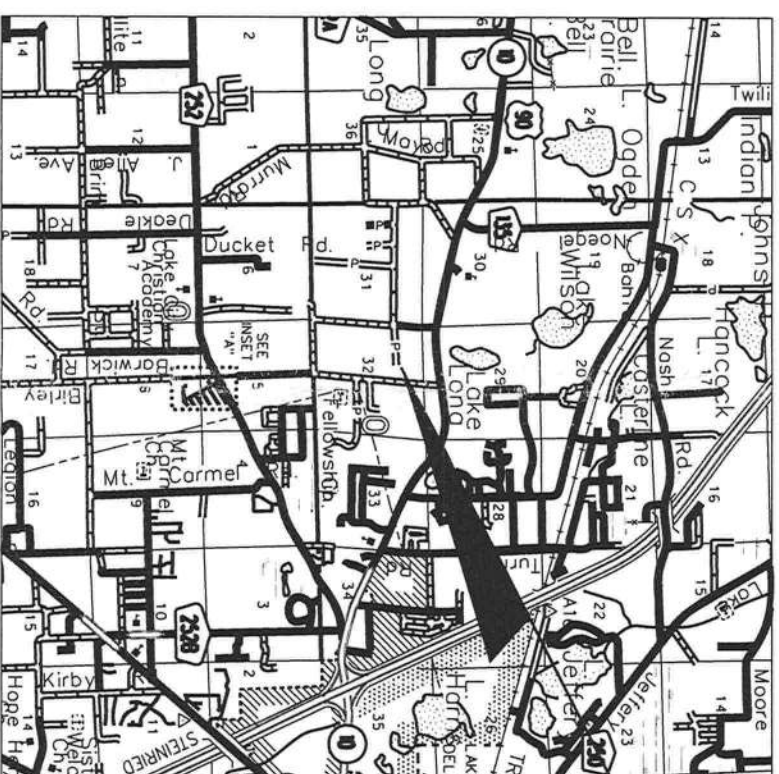
CES

Crews Engineering Services, LLC

P.O. BOX 970
LAKE CITY, FL 32056
PHONE: 386.754.4085
www.crewsengineering.com

CERTIFICATE OF AUTHORIZATION: NO. 28022

BRETT A. CREWS, P.E. 65592



PROJECT LOCATION

INDEX OF SHEETS

- 1 EXISTING CONDITIONS
- 2 SITE PLAN

LOCATION MAP

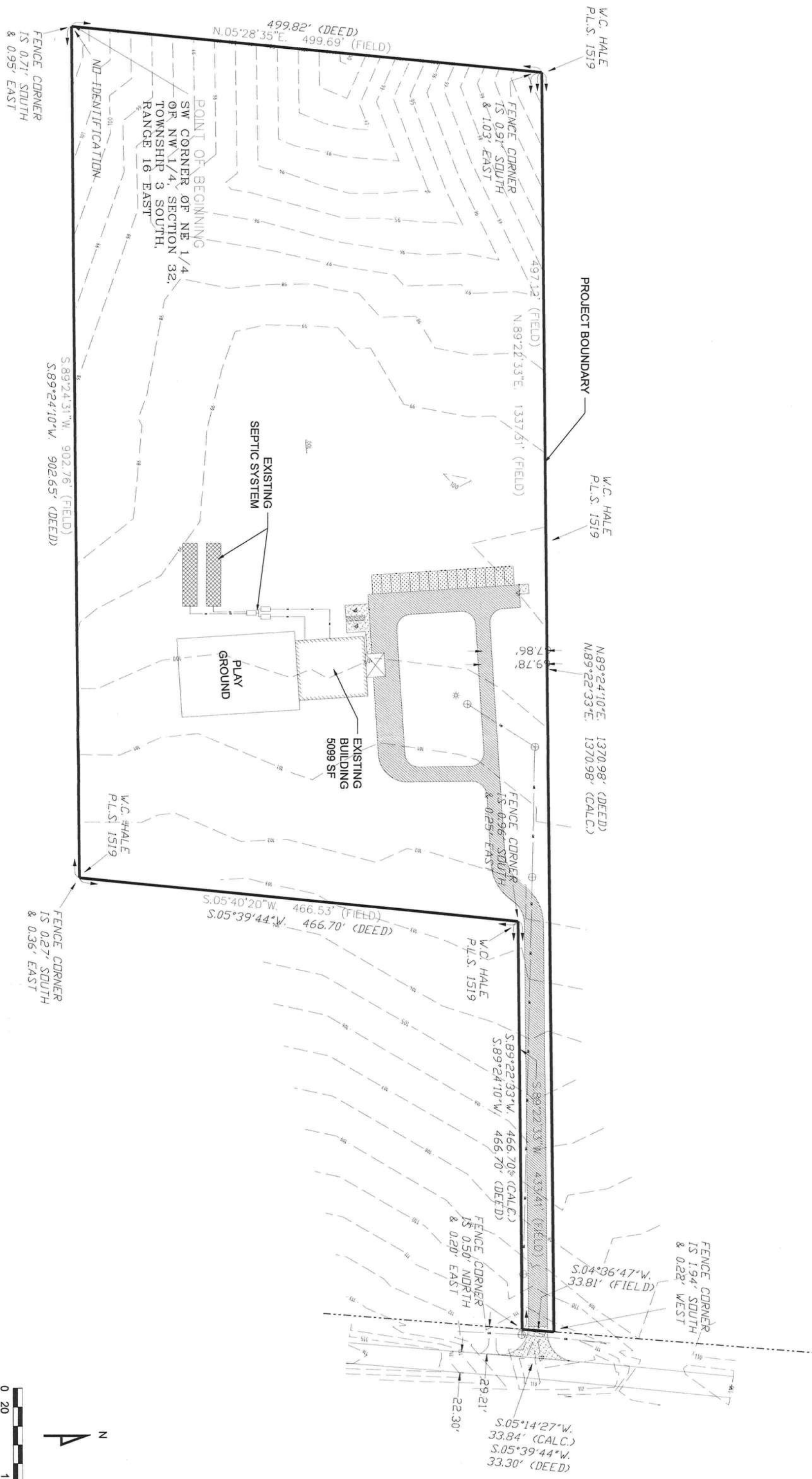
SECTION 32, TOWNSHIP 3 SOUTH, RANGE 16 EAST
COLUMBIA COUNTY, FLORIDA

PARCEL ID: 32-3S-16-02428-004

CES PROJECT ID:
2010-002

Brett A. Crews
2010-2010

28429



REVISIONS			
DATE	BY	DESCRIPTION	

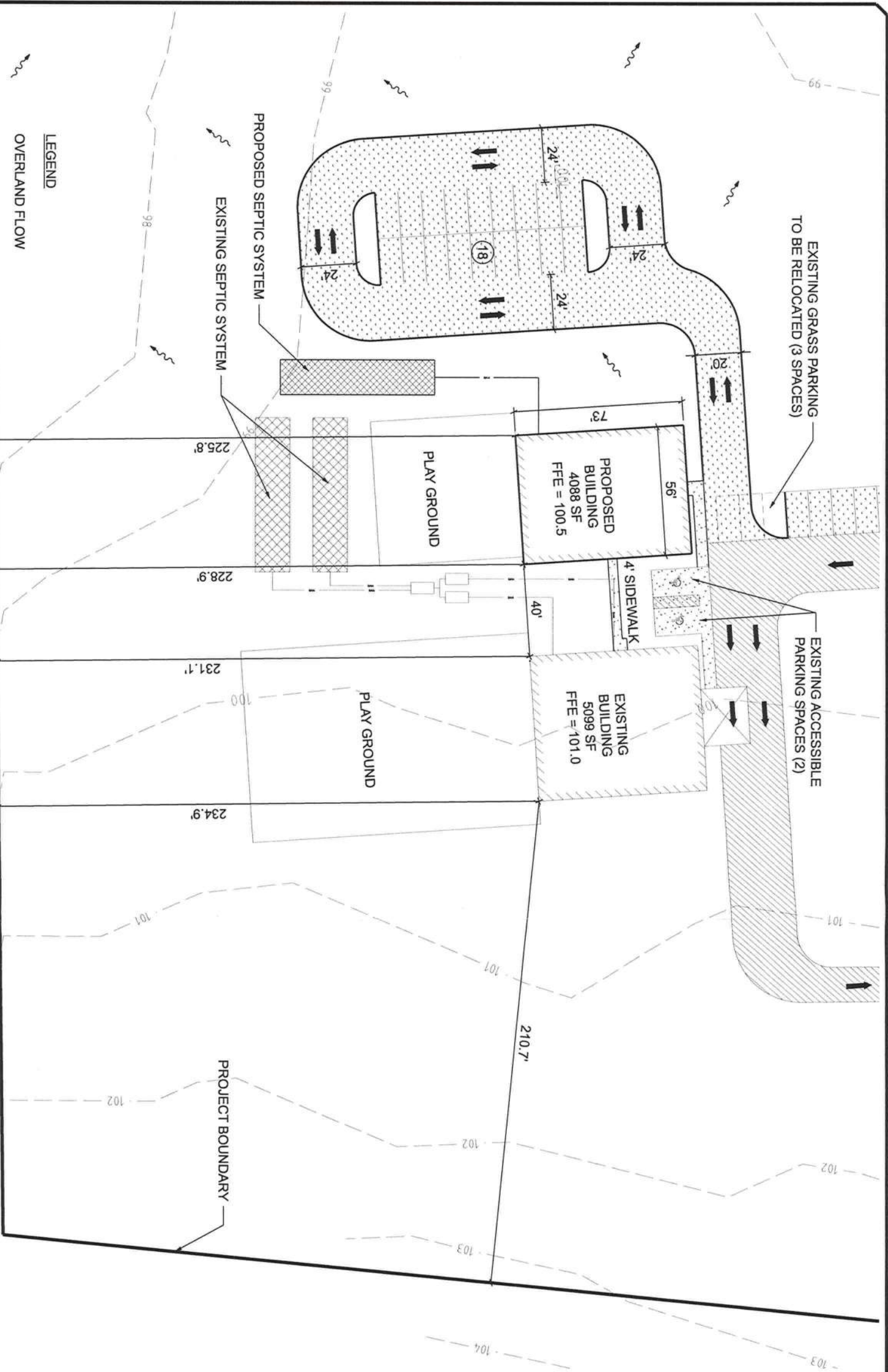
CES

CERTIFICATE OF AUTHORIZATION
NO. 28022
P.O. BOX 970
LAKE CITY, FL 32056
PHONE: 386.754.4085

Crews Engineering Services, LLC

Brett A. Crews
2-2-2010
Brett A. Crews, P.E. 66592

DRAWN BY:	BC	HART 2 HART ACADEMY PHASE II	CES PROJECT NO.: 2010-002
APPROVED BY:	BC		
EXISTING CONDITIONS		SHEET:	1



GENERAL PROJECT INFORMATION

FUTURE LAND USE: AGRICULTURE
ZONING: AGRICULTURE-3

DEVELOPMENT DATA

TOTAL SITE AREA = 466,528 SF = 10.71 ACRES

EXISTING CONDITIONS

BUILDING AREA = 5,099 SF
CONCRETE PAVEMENT AREA = 945 SF

PROPOSED CONDITIONS

BUILDING AREA = 9,187 SF
CONCRETE PAVEMENT AREA = 367 SF
TOTAL IMPERVIOUS AREA = 10,499 SF (2.3% SITE AREA)

FAR = 9,187 SF / 466,528 SF = 0.02

MINIMUM BUILDING/YARD SETBACKS PER LDR

FRONT YARD = 30'
REAR YARD = 25'
SIDE YARD = 25'

PARKING CALCULATIONS

CHILD CARE CENTERS:
1 SPACE PER 300 SF DEVOTED TO CHILD CARE ACTIVITIES
REQUIRED PARKING = 4,088 SF / 300 = 14 SPACES

AVAILABLE PARKING = 15 SPACES (ADDITIONAL)

ACCESSIBLE PARKING :
2 PER 50 REQUIRED SPACES = 2 SPACES (TOTAL FOR SITE)

BOUNDARY AND TOPOGRAPHICAL SURVEY

THE BOUNDARY AND TOPOGRAPHICAL SURVEY INFORMATION SHOWN IN THESE PLANS IS BASED ON A SURVEY BY BRITT SURVEYING AND ASSOCIATES INC., LB 7593, DATED 11-11-08 AND AS BUILT FIELD MEASUREMENTS OF PHASE I CONSTRUCTION

UTILITIES

WATER SERVICE: TO BE PROVIDED BY CONNECTION TO EXISTING CITY OF LAKE CITY SERVICE ON SITE

WASTEWATER SERVICE: TO BE PROVIDED BY ON-SITE SEPTIC SYSTEM

ELECTRIC SERVICE: PROVIDED BY CONNECTION TO EXISTING SERVICE ON SITE

DRAINAGE

THE PROPOSED STORMWATER MANAGEMENT FACILITY IS DESIGNED TO MEET SRWMD RULES AND REGULATIONS

LEGEND

OVERLAND FLOW

TRAFFIC FLOW

GRASSSED PARKING AREA

EXISTING GRAVEL DRIVEWAY

AVAILABLE PARKING SPACES



REVISIONS			
DATE	BY	DESCRIPTION	

CES

Crews Engineering Services, LLC

CERTIFICATE OF AUTHORIZATION
NO. 28022

P.O. BOX 970
LAKE CITY, FL 32056
PHONE: 386.754.4085

2-2-2010

Brett A. Crews, P.E. 65592

DRAWN BY: BC	HART 2 HART ACADEMY PHASE II	CES PROJECT NO.: 2010-002
APPROVED BY: BC		
	SITE PLAN	SHEET: 2