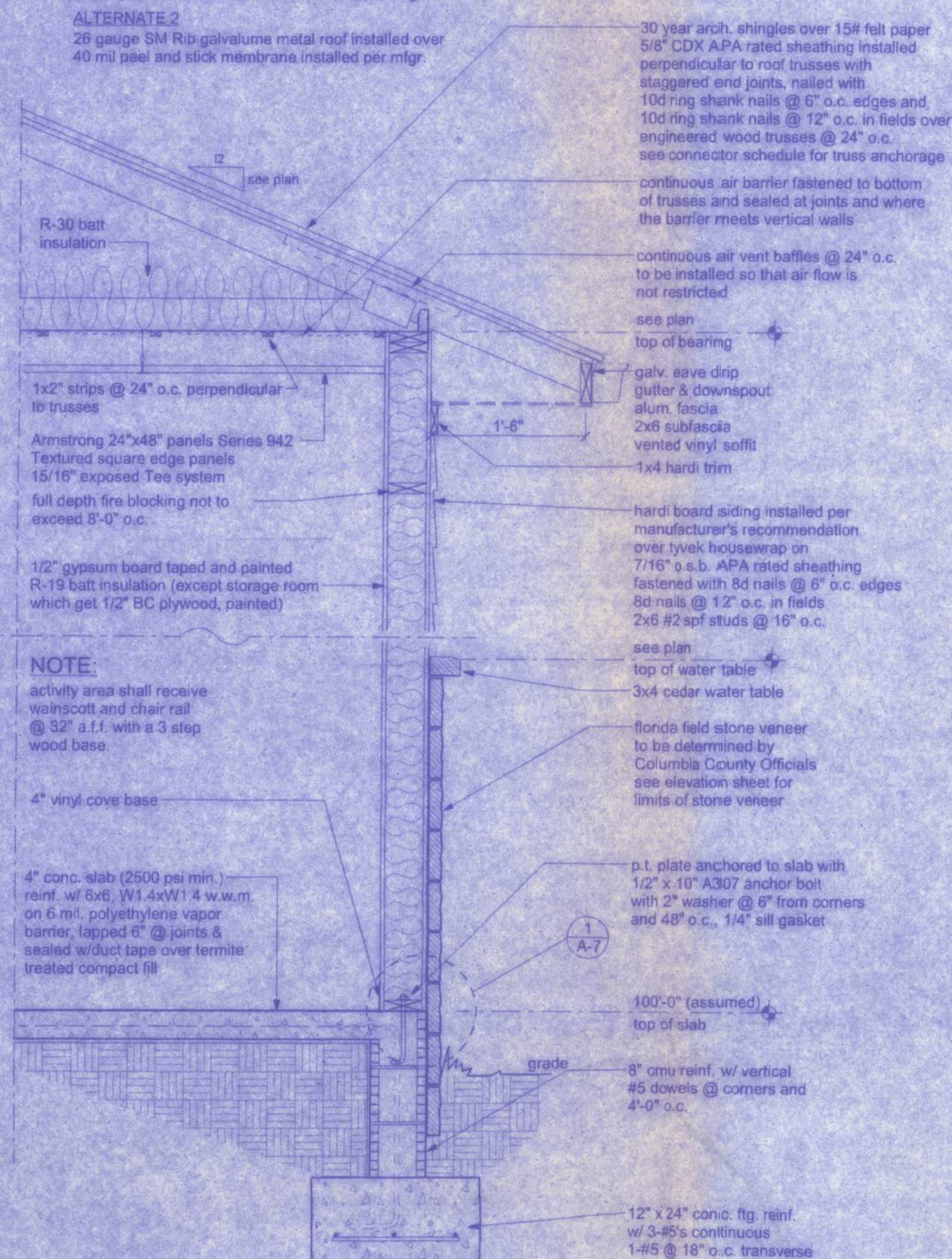


NOTE:  
the roofing contractor shall provide alternate bids for the following roof coverings:

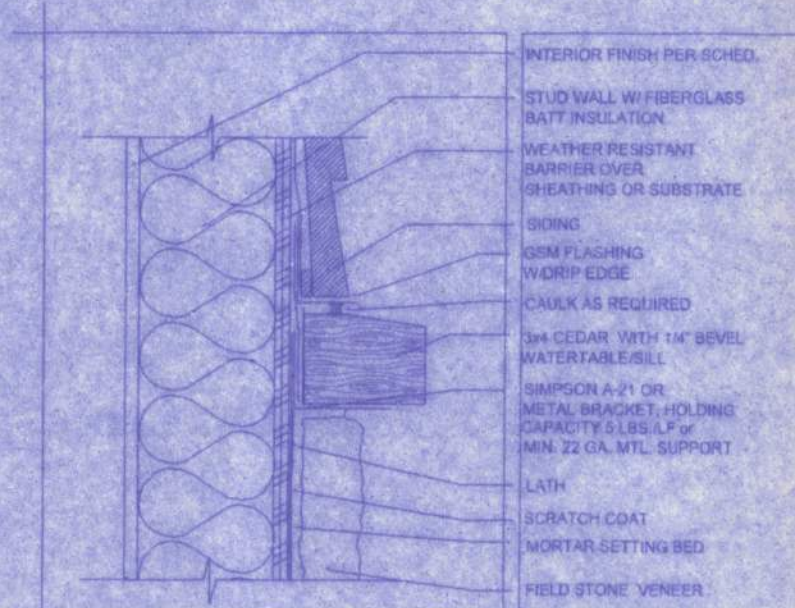
ALTERNATE 1  
24 gauge standing seam metal roof installed over 40 mil peel and stick membrane installed per mfg.

ALTERNATE 2  
26 gauge SM Rib galvalume metal roof installed over 40 mil peel and stick membrane installed per mfg.

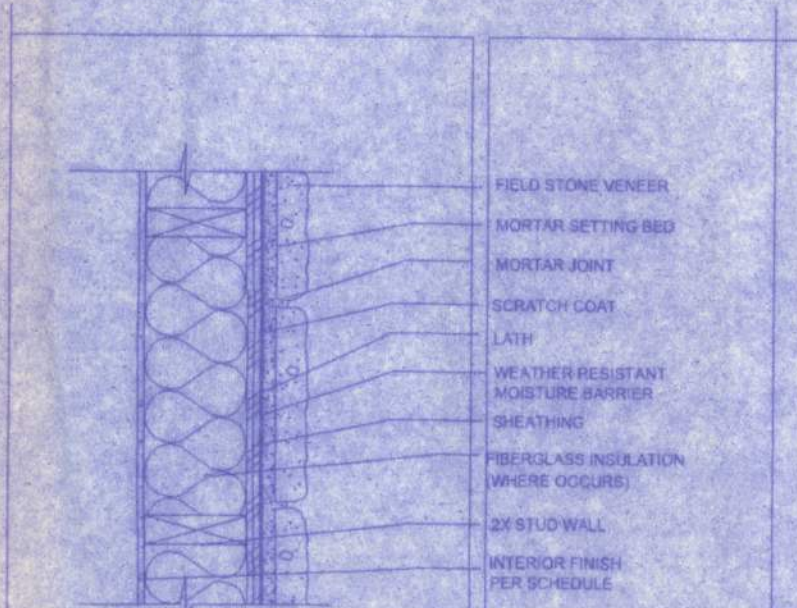


## TYPICAL WALL SECTION

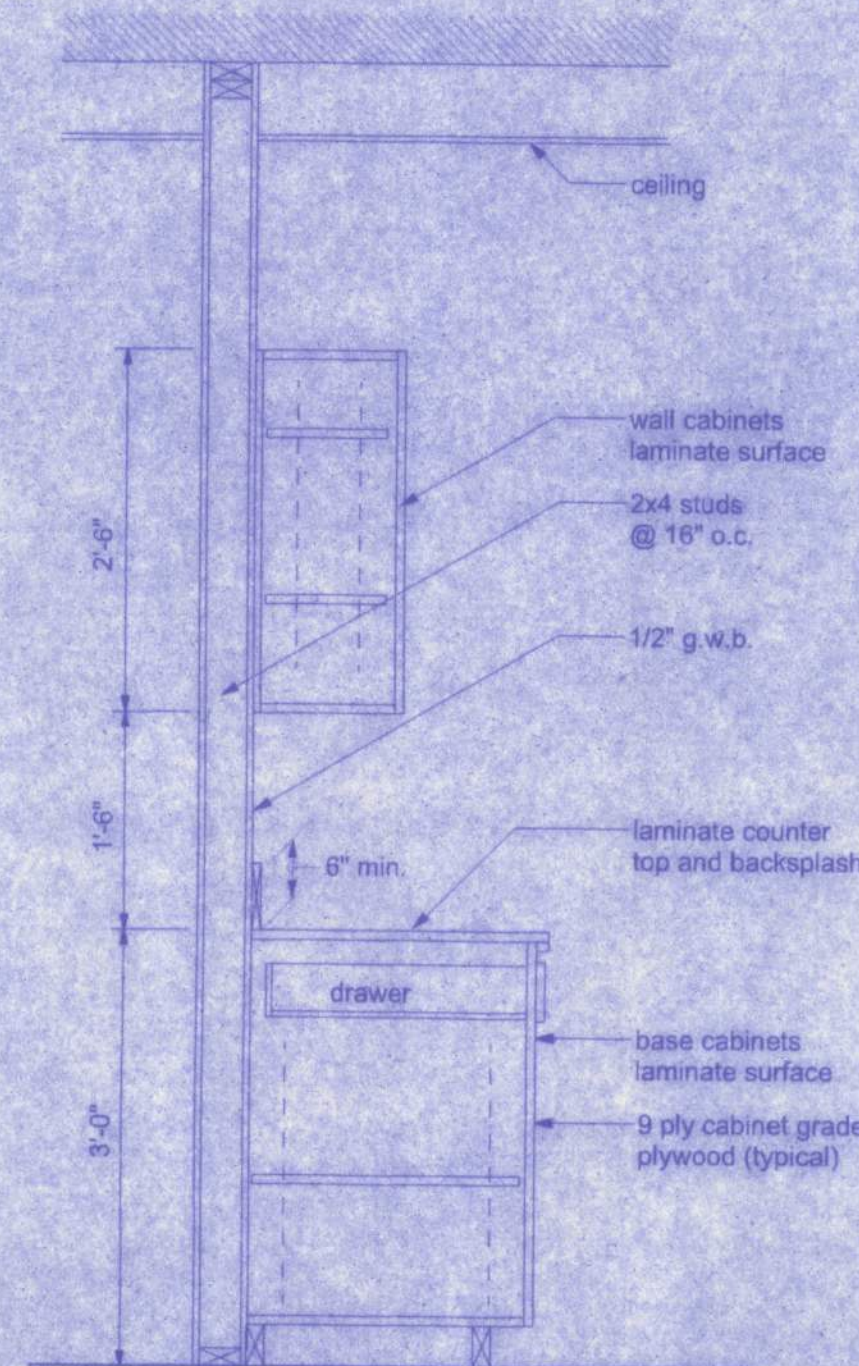
SCALE: 3/4" = 1'-0"



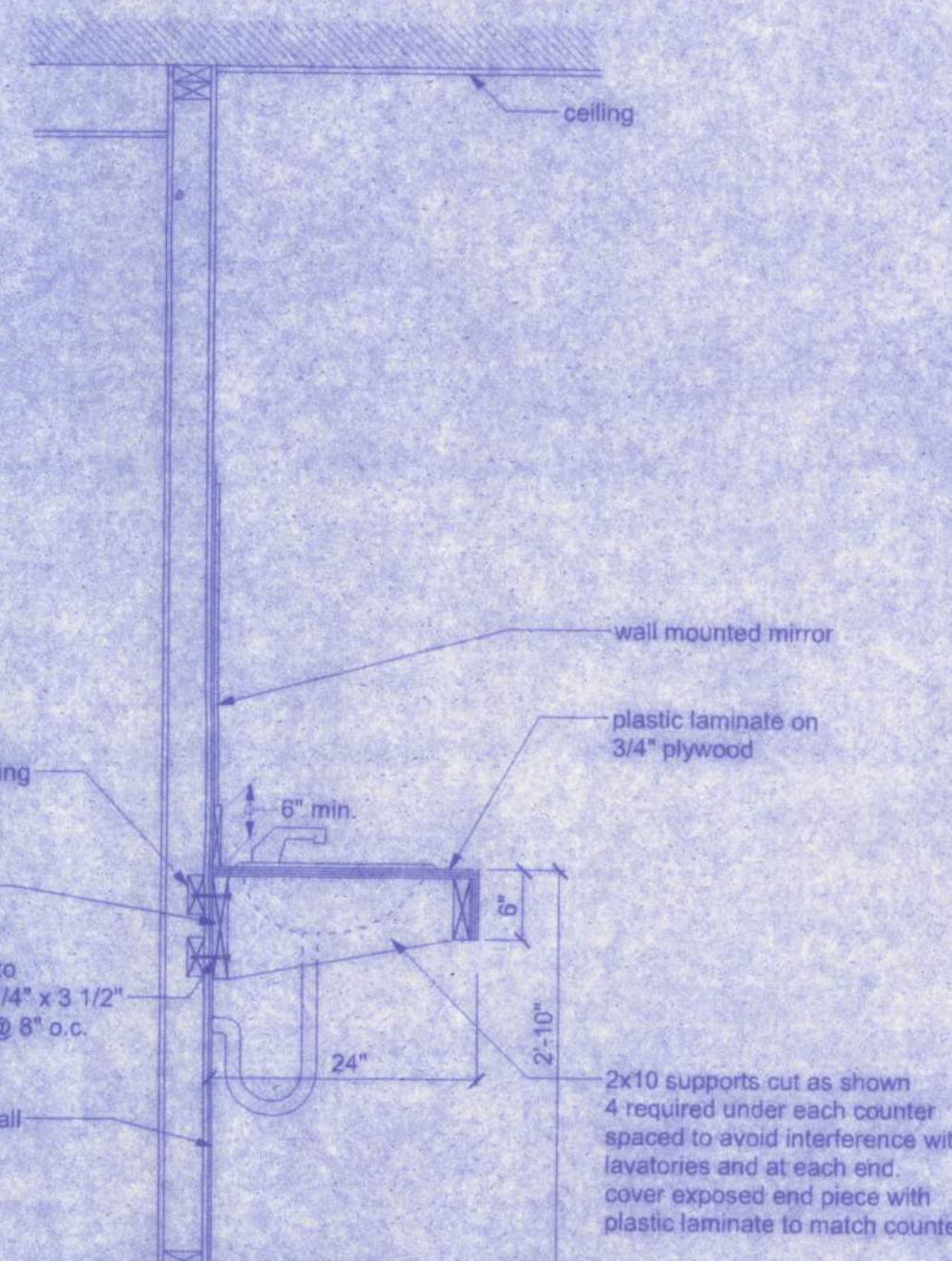
A WATER TABLE/SILL @ SIDING  
SCALE: N.T.S.



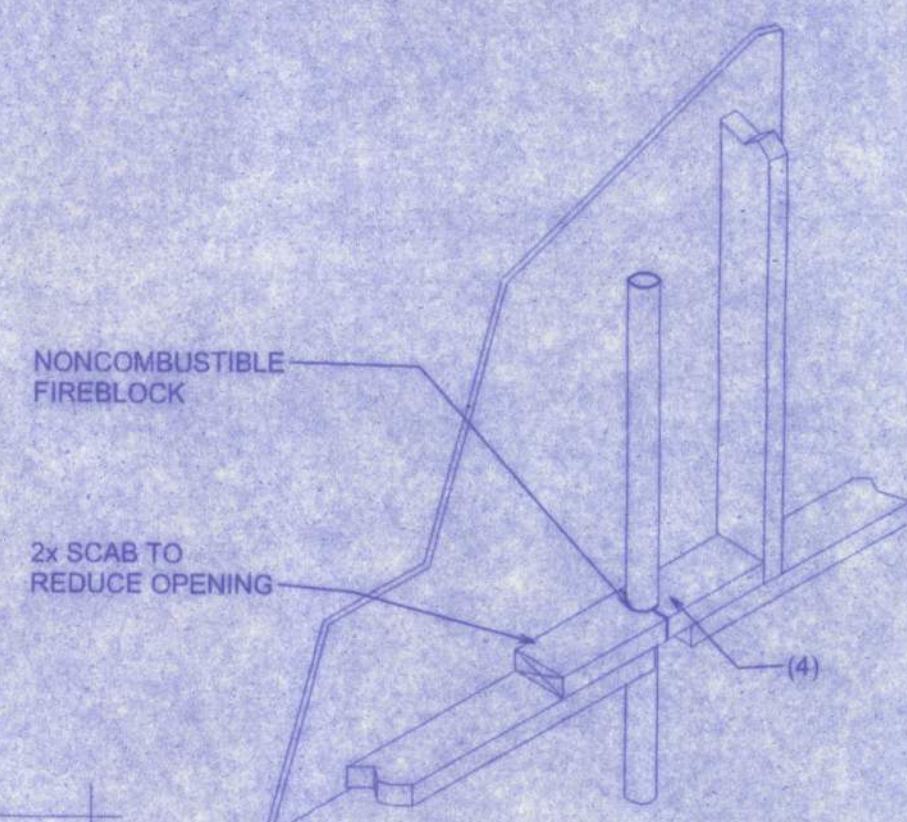
B OVER SHEATHING OVER STUDS  
SCALE: N.T.S.



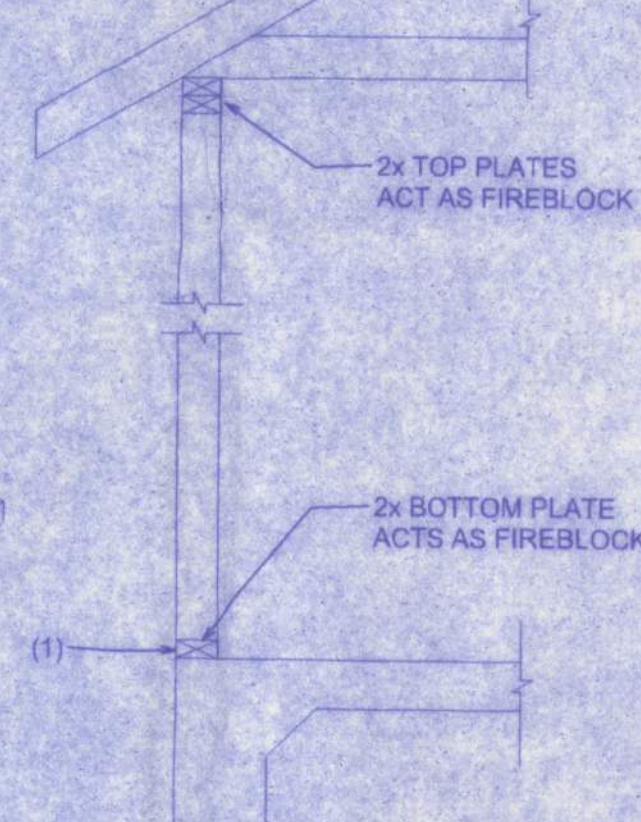
A CABINET SECTION  
SCALE: 3/4" = 1'-0"



B VANITY SECTION  
SCALE: 3/4" = 1'-0"



## PENETRATIONS

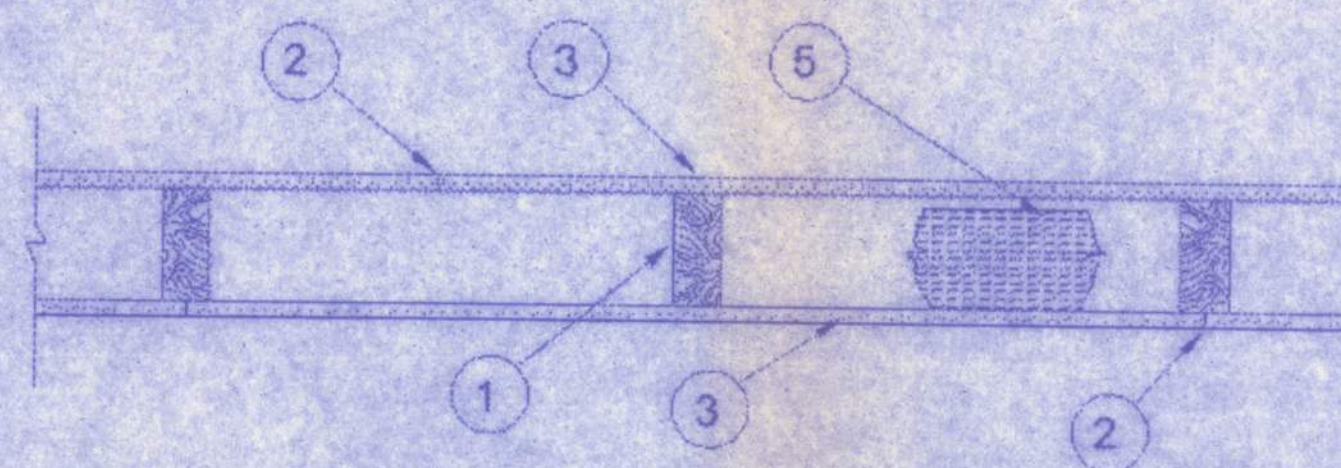


## PLATFORM FRAMING

## FIREBLOCKING NOTES:

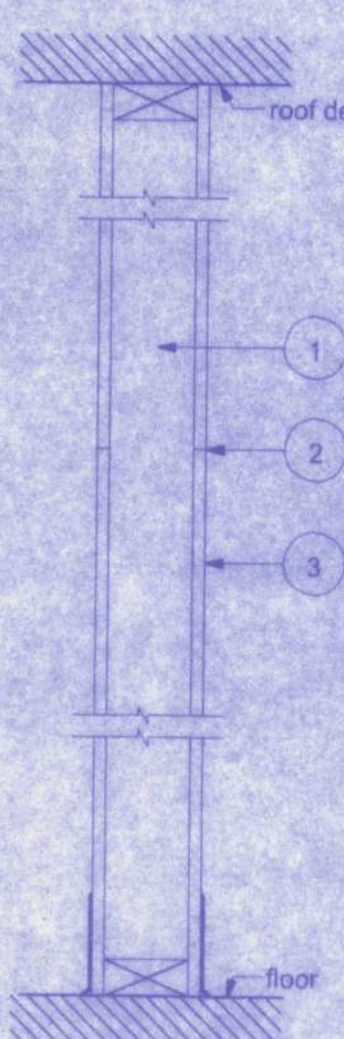
FIREBLOCKING SHALL BE INSTALLED IN WOOD FRAME CONSTRUCTION IN THE FOLLOWING LOCATIONS:

1. IN CONCEALED SPACES OF STUD WALLS AND PARTITIONS INCLUDING FURRED SPACES AT CEILING AND FLOOR LEVELS.
2. AT ALL INTERCONNECTIONS BETWEEN CONCEALED VERTICAL AND HORIZONTAL SPACES SUCH AS OCCUR AT SOFFITS, DROP CEILINGS, COVE CEILINGS, ETC.
3. IN CONCEALED SPACES BETWEEN STAIR STRINGERS AT THE TOP AND BOTTOM OF THE RUN.
4. AT OPENINGS AROUND VENTS, PIPES, DUCTS, CHIMNEYS AND FIREPLACES AT CEILING AND FLOOR LEVELS WITH PYRO PANEL MULTIFLEX SEALANT
5. AT ALL INTERCONNECTIONS BETWEEN CONCEALED VERTICAL STUD WALL OR PARTITION SPACES AND CONCEALED SPACES CREATED BY AN ASSEMBLY OF FLOOR JOISTS, FIREBLOCKING SHALL BE PROVIDED FOR THE FULL DEPTH OF THE JOISTS AT THE ENDS AND OVER THE SUPPORTS.



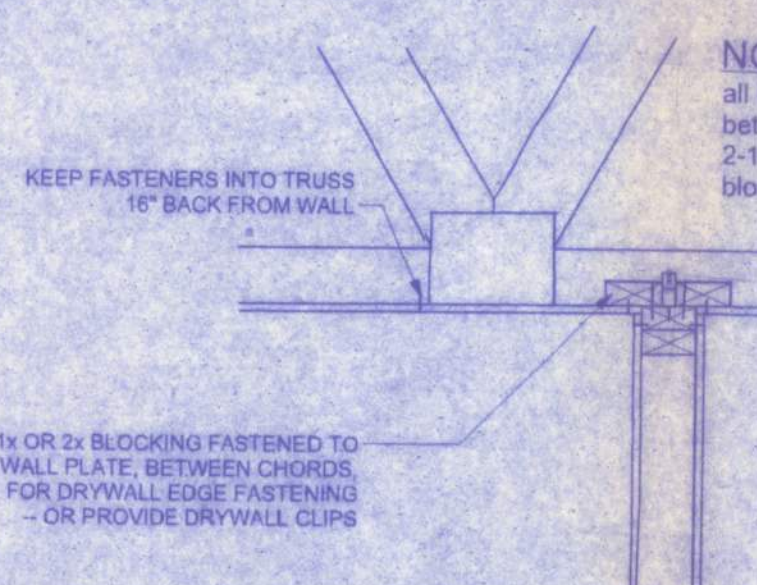
## Top View

Design No. U305  
Rating - 1 Hr



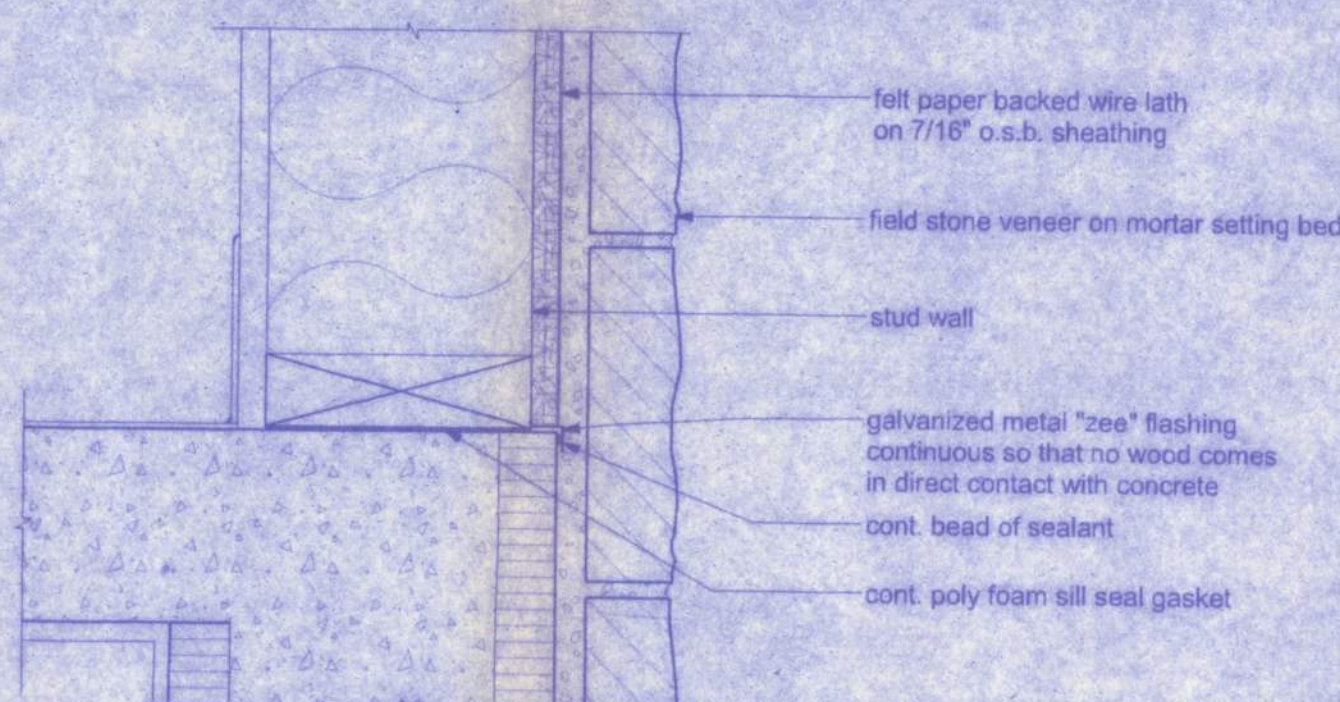
## Section View

1. **Wood Studs** - Nom. 2 by 4 in. or 2 by 6 in. spaced 16" o.c. max. effectively firestopped.
2. **Joints and Nail Heads** - Exposed or covered with fiber tape and joint compound, except where required for specific edge configuration. For tapered, rounded edge gypsum board, joints covered with joint compound or fiber tape and joint compound. As an alternate, nom 3/32 in. thick gypsum may be applied to the entire surface of classified veneer baseboard. Joints reinforced. Nailheads exposed or covered with joint compound.
3. **Gypsum Board** - 5/8" thick paper or vinyl surfaced, with beveled, square, or tapered edges, applied either horizontally or vertically. Gypsum panels nailed 7 in o.c. 6d cement coated nails 1-7/8 in long, 0.0915 in shank diam and 15/64 in diam heads. When used in widths other than 48 in, gypsum panels are to be installed horizontally.  
When item 5, steel framing members is used, gypsum panels attached to furring channels with 1" long Type S bugle head steel screws spaced 12" o.c.
4. **Steel Corner Fasteners** - (Optional) - For use at wall corners. Channel shaped, 2" long by 1" high on the back side with two 1/8" wide cleats protruding into the 5/8" wide channel, fabricated from 24 gauge galv. steel. Fasteners applied only to the end or cut edge of the gypsum board, no greater than 2" from corner of gypsum board, max spacing 16" o.c. Nailed to adjacent stud through tab using one No. 6d cement coated nail per fastener. Corners of wall board shall be nailed to top and bottom plate using No. 6d cement coated nails.
5. **Batts and Blankets** - (Optional - required when steel framing members used) Glass fiber or mineral wool insulation. Placed to completely or partially fill the stud cavities. When Steel Framing Used, glass fiber or mineral wool insulation shall be placed to completely fill the stud cavities and shall be secured to the studs 24" o.c. with staples, nails or screws.
6. **Steel Framing Members** (Optional, Not Shown) - Furring channels and Steel Framing Members as described below:  
a. **Furring Channels** - Formed of No. 25 MSG galv steel spaced 24" o.c. perpendicular to studs. Channels secured to studs as described in item 1. Ends of adjoining channels are overlapped 6 in. and tied together with double strand of No. 18 SWG galv steel wire near each end of overlap. As an alternate, ends of adjoining channels may be overlapped 6" and secured together with two self tapping #8 framing screws, min 7/16" long at the midpoint of the overlap, with one screw on each flange of the channel. Gypsum board attached to furring channels as described in item #3.  
b. **Steel Framing Members** - Used to attach furring channels to studs. Clips spaced 48" o.c. RSIC-1 clips secured to studs with No. 8 x 2-1/2" coarse drywall screw through the center grommet. RSIC-V clips secured to studs with No. 8 x 1-1/2" coarse drywall screw through the center hole. Furring channels are friction fitted into clips.
7. **Furring Channel** - (Optional, Not Shown) - for use on one side of the wall - Resilient channels, 25 MSG galv steel, spaced vertically 24" o.c., flange portion screw attached to one side of studs with 1-1/4" long diamond shaped point, double lead Phillips head steel screws.
8. **Caulking and Sealants** - (not shown, optional) A bead of acoustical sealant applied around the partition perimeter for sound control.



NOTE:  
all blocking shall be securely fastened between structural members with 2-16d nails on each end, no float blocking shall be permitted.

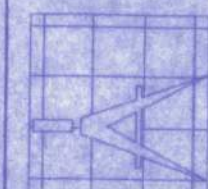
## NON-BEARING INT. WALL ATTACHMENT TO TRUSSES



1 SILL DETAIL  
SCALE: 3" = 1'-0"

# WEST SIDE COMMUNITY CENTER

128 SW NASSAU STREET  
LAKE CITY, FL 32025  
(386) 768-4209



Freeman  
Design Group Inc.

DATE  
11/5/10

DRAWN BY  
W.H.F.  
APPROVED  
W.H.F.

REVISIONS

SHEET  
A-7

OF  
11

PROJECT NO.  
09.C037

CERTIFICATE OF AUTHORIZATION # 00008701