

®

## UTILITY REQUIREMENTS

## BUILDING INFORMATION

# INDEX OF DRAWINGS

[illegible]

1. DEMOLITION AND CONSTRUCTION TO REMOVE VESTIBULE AND RELOCATE ENTRANCE CLOSER TO STRETCH END.
2. DEMOLITION AND CONSTRUCTION TO MAKE TOILET VESTIBULE A.D.A. COMPLIANT.
3. REMOVE EXISTING PANEL 15 IN STOREFRONT AND INSTALL NEW TEMPERED SAFETY GLASS TO MATCH EXISTING, TO FLOOR.
4. REMOVE AND REPLACE FLOOR TILE IN CUSTOMER AREA AND TOILETS.
5. REMOVE AND RELOCATE SEATING ON STRETCH END AND INSTALL NEW 4 MAN LOW COUNTER. NEW SEATING SHALL NE A.D.A. COMPLIANT.
6. INSTALL NEW 3'-0" A.D.A. ACCESSIBLE CASH STAND, REMOVE AND REPLACE DI FRONT AND HIGH COUNTER TOP.
7. REMOVE AND INSTALL NEW CEILING GRID, TILES, GLOBE LIGHTS, SPEAKERS, H.V.A.C. REGISTERS, AND EXIT LIGHT. (RE-WRAP DUCT WORK AS NEEDED)
8. INSTALL (3) NEW 24" x 48" LAY-IN LIGHT FIXTURES OVER CASH STAND AND STRETCH END.
9. REMOVE AND REPLACE WALL TILE IN DINING AREA.
10. REMOVE EXISTING FLOORING AS REQUIRED TO INSTALL NEW SILIKAL FLOORING IN FRONT OF RESTAURANT, UNDER DISHTABLE, UNDER BACKBAR, AND IN WALK-IN COOLER / FREEZER.
11. INSTALL NEW METAL AWNINGS ON 3 SIDES OF BUILDING AND OVER REAR DOOR.
12. RE-PAINT BUILDING EXTERIOR OLD REDWOOD AND ADD GRAY ACCENT STRIPES.
13. ANY OTHER ADDITIONAL NECESSARY REPAIRS REQUIRED. DISCOVERED OR UNCOVERED DURING SCOPE OF WORK, DEMOLITION AND REPLACEMENT. WITH OWNER AND LOCAL JURISDICTION APPROVAL.

# REMODEL

These drawings and the design represented herein are the exclusive property of Waffle House Inc. Reproduction or any use of these drawings other than for the project intended without the express written consent of Waffle House Inc. is prohibited. Any unauthorized use will be subject to legal action.

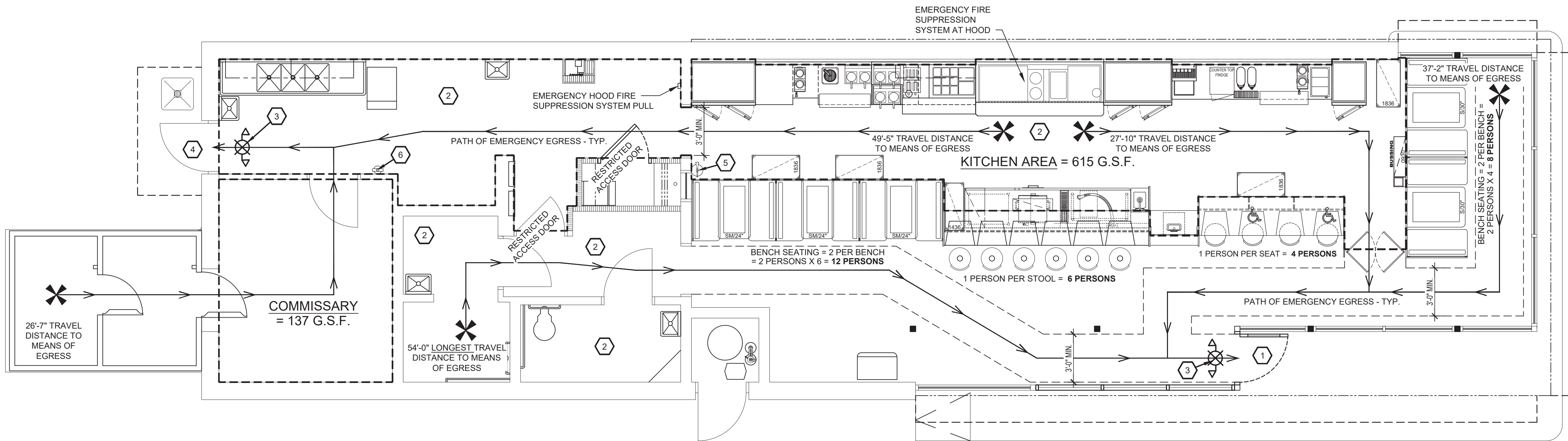
DATE \_\_\_\_\_

# ESCH

30 SEAT / 15 STATION / REMODEL 45YR03

REMODEL 45YR





1

LS-1

LIFE SAFETY PLAN

Scale: 1/4"=1'-0"

LIFE SAFETY LEGEND

PATH OF EMERGENCY EGRESS

←

EMERGENCY/EXIT LIGHTING

⊗

FIRE EXTINGUISHERS

Ⓔ/Ⓕ

N.F.P.A.101-2021, TABLE 7.3.1.2 OCCUPANT LOAD FACTORS			
AREA	OCC. LOAD FACTOR	CALCULATION	NUMBER OF OCC.
BENCH SEATING	1 PERSON PER 18"	2 PER BENCH x 10 =	20 PERSONS
SEATING	1 PERSON PER SEAT	10 SEATS x 1 =	10 PERSONS
KITCHEN	1 PERSON PER 100 G.S.F.	615 G.S.F. / 100 =	7 PERSONS
COMMISSARY	1 PERSON PER 300 G.S.F.	137 G.S.F. / 300 =	1 PERSON
			38 PERSONS TOTAL

NOTE: SEATING CAPACITY HAS BEEN REDUCED BY 13 PERSONS.

SECTION 37.2.4.3  
A SINGLE MEANS OF EGRESS SHALL BE PERMITTED IN A CLASS 'C' MERCANTILE OCCUPANCY, PROVIDED THAT THE TRAVEL DISTANCE TO THE EXIT OR A MALL PEDESTRIAN WAY DOES NOT EXCEED 75 FT (23M).

MINIMUM FLAME SPREAD CLASSIFICATION FOR INTERIOR WALL AND CEILING FINISHES SHALL BE CLASS A, B OR C PER 37.3.3.

- LIFE SAFETY KEYNOTES:
- 1

34" CLEAR WIDTH EGRESS DOOR HAS A CLOSER BUT NO LATCH, OPEN 24/7/365.
- 2

1 FOOT CANDLE OF ILLUMINATION MINIMUM REQUIRED AT FLOOR ALONG PATH OF EGRESS.
- 3

EMERGENCY EGRESS/EXIT LIGHT, SEE E-1 SHEET FOR ADDITIONAL NOTES AND REQUIREMENTS.
- 4

34" CLEAR WIDTH REAR SERVICE DOOR. NO CLOSER. OVERHEAD CRASH CHAIN. NO LATCH. TOUCH BAR EXIT DEVICE.
- 5

WET CHEMICAL EXTINGUISHER. WC-6 LITER. K-CLASS. MAX 48" A.F.F.
- 6

DRY CHEMICAL EXTINGUISHER. 40 ABC RATING. MAX 48" A.F.F.

MARK D. PAVEY, AIA - ARCHITECT

P.O. BOX 1365  
GULF SHORES, AL 36547  
(334) 546-3624 (206) 350-0593 (FAX)

These drawings and the design represented herein are the exclusive property of Waffle House Inc. Reproduction or any use of these drawings other than for the project intended without the express written consent of Waffle House Inc. is prohibited. Any unauthorized use will be subject to legal action.

#	DATE	REVISIONS	BY

'A UNIQUE AMERICAN EXPERIENCE'

WAF FLE  
H O U S E

'AMERICA'S PLACE TO EAT, AMERICA'S PLACE TO WORK'

5986 Franciscan Drive, Norcross, GA 30071  
(770) 725-5700

LIFE SAFETY PLAN

30 SEAT / 15 STATION / REMODEL 45YR

CHECKED BY:  
MDP/ EJ

DRAWN BY:  
MM

WAFFLE HOUSE MOD

JOB NO:  
73366

DATE:  
03/20/2024

SHEET  
LS-1  
OF  
SHEETS

REMODEL 45YR



MARK D. PAVEY, AIA - ARCHITECT

P.O. BOX 1365  
GULF SHORES, AL 36547  
(334) 946-3624 (206) 350-0593 (FAX)  
These drawings and the design represented herein are the exclusive property of Waffle House Inc. Reproduction or any use of these drawings other than for the project intended without the express written consent of Waffle House Inc. is prohibited. Any unauthorized use will be subject to legal action.

BY  
REVISIONS  
DATE  
#

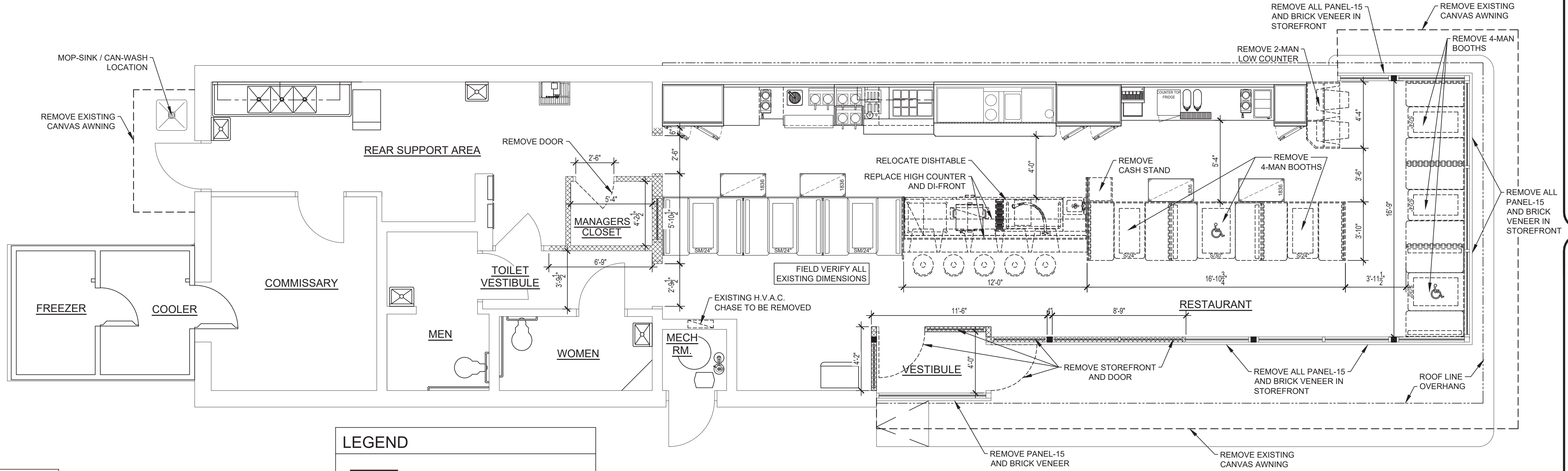
"A UNIQUE AMERICAN PHENOMENON"  
**W A F F L E**  
**H O U S E**  
"AMERICA'S PLACE TO EAT, AMERICA'S PLACE TO WORK"  
5986 Financial Drive, Norcross, GA 30071  
(770) 725-5700

EXISTING/DEMO & PROPOSED FLOOR  
PLANS, AND WINDOW DETAILS  
30 SEAT / 15 STATION / REMODEL 45YR  
LOCATION: UNIT 388  
2963 W. U.S. HIGHWAY 90  
LAKE CITY, FLORIDA 32055

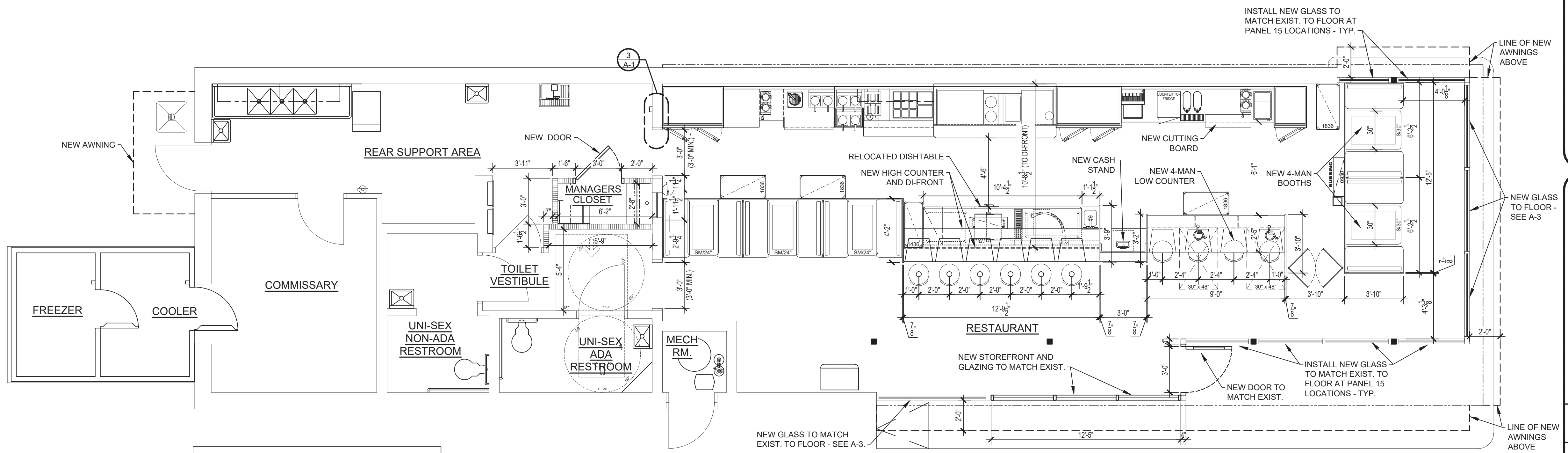
CHECKED BY:  
MDP/EJ  
DRAWN BY:  
MM

WAFFLE HOUSE MOD  
JOB NO:  
73366  
DATE:  
03/20/2024  
SHEET  
A-1  
OF  
SHEETS

REMODEL 45YR



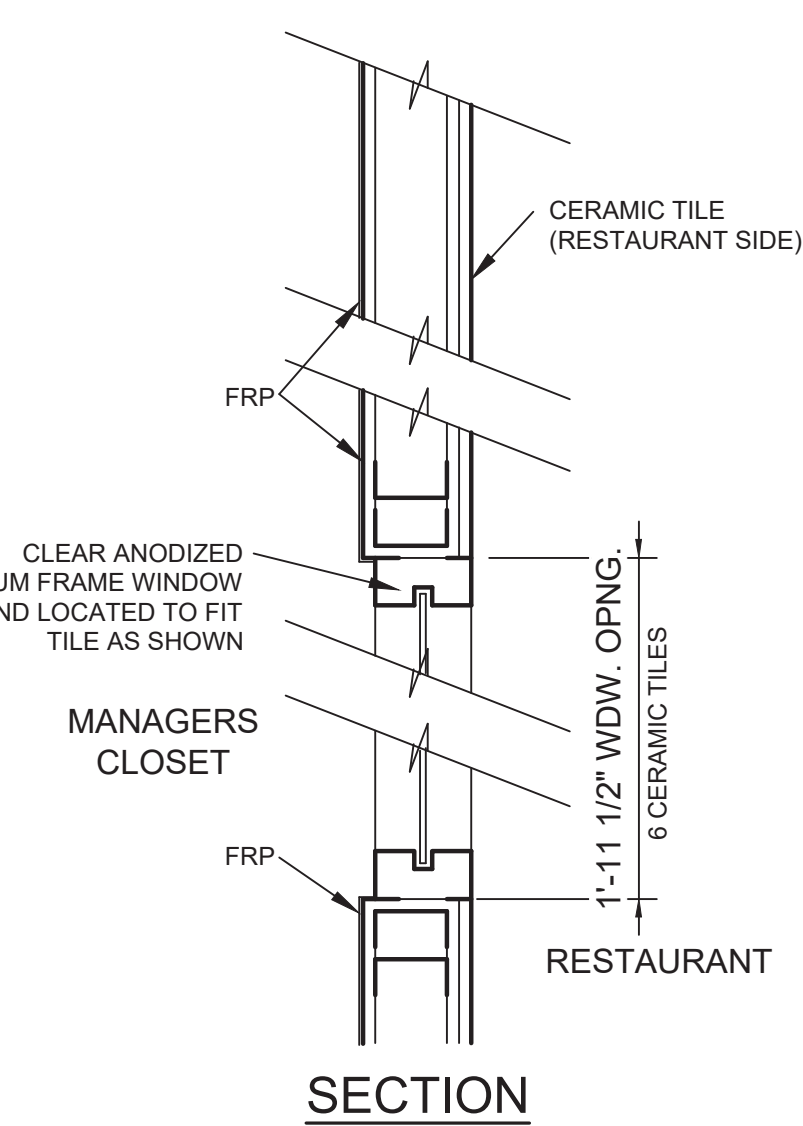
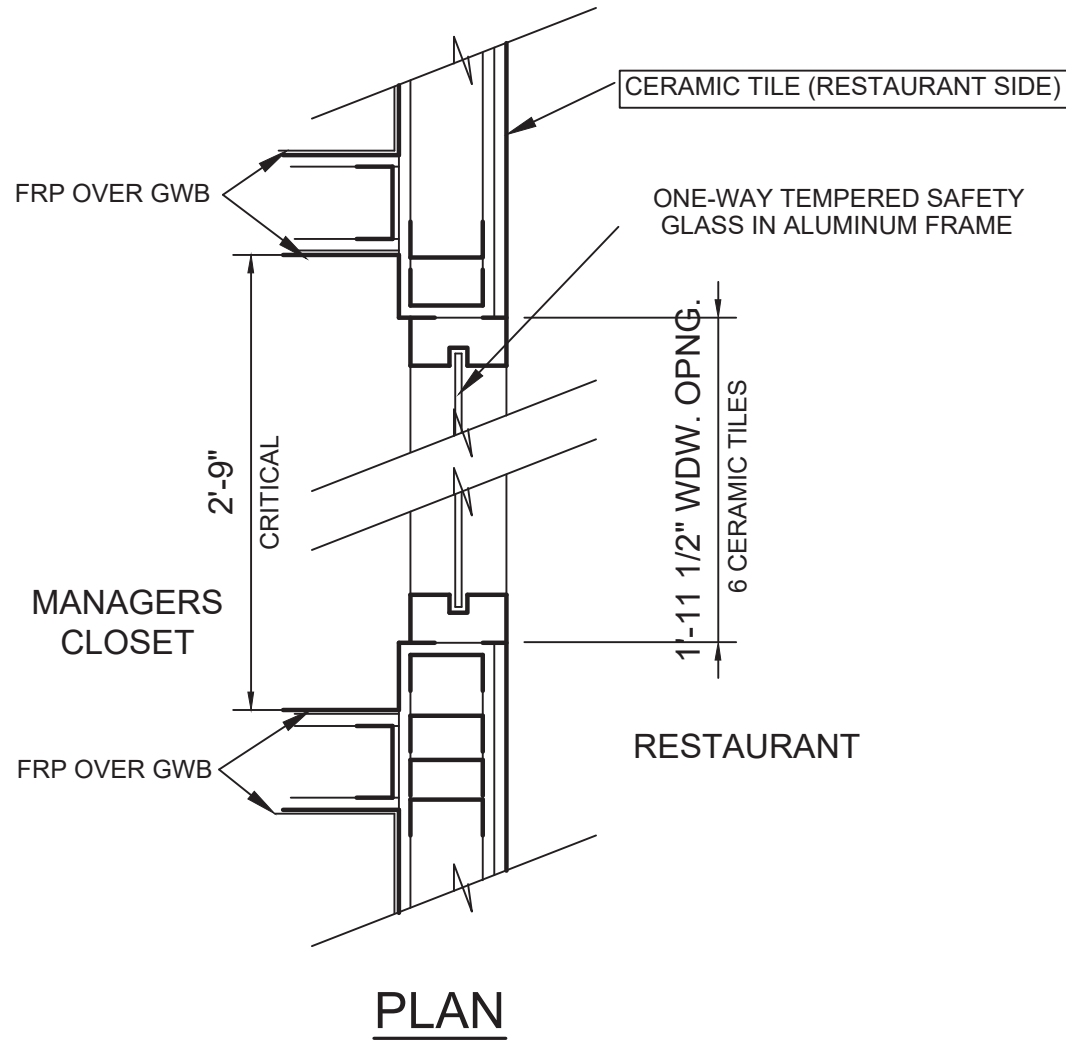
1 43/16 EXISTING/DEMO FLOOR PLAN  
Scale: 1/4"=1'-0"



2 30/15 PROPOSED FLOOR PLAN  
Scale: 1/4"=1'-0"

NOTES

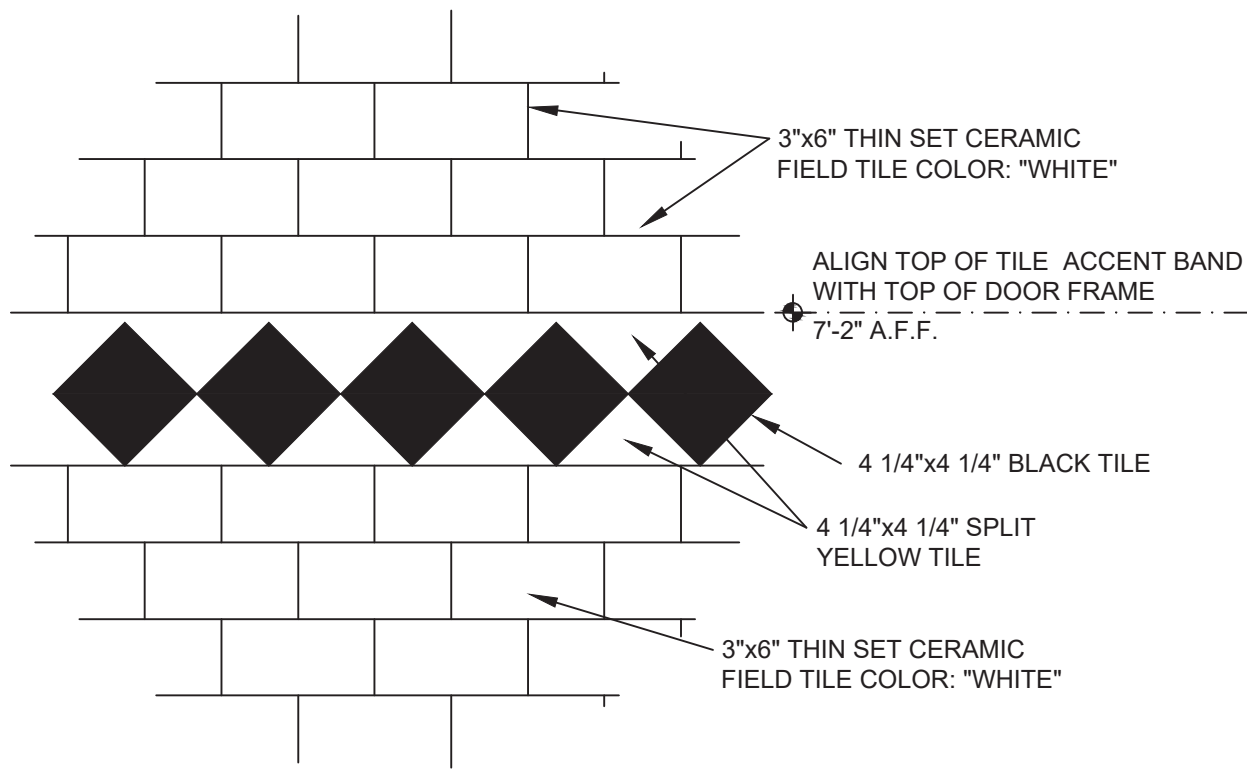
- 1) ALL KITCHEN EQUIPMENT BEING REMOVED ARE TO BE PACKED FOR SHIPMENT BACK TO LES.
- 2) ALL KITCHEN APPLIANCES NOT BEING REMOVED OR REPLACED SHOULD BE STORED IN A SAFE LOCATION AND PROTECTED FROM DAMAGE.
- 3) BOOTHS THAT ARE REMOVED ARE TO BE DEMOLISHED OR RELOCATED. CHECK SCOPE OF WORK PROVIDED BY CONSTRUCTION TEAM.
- 4) FIELD VERIFY ALL EXISTING CONDITIONS AND DIMENSIONS PRIOR TO FABRICATION OF MILLWORK AND STOREFRONT.
- 5) SEE KITCHEN EQUIPMENT SHEETS FOR MORE DETAILS INCLUDING CLEARANCES AT ACCESSIBLE SEATING.
- 6) VERIFY ALL WORK TO BE INSTALLED BY OTHERS WITH WAFFLE HOUSE FIELD REPRESENTATIVE.
- 7) BLOCKING TO BE INSTALLED BEHIND FIRE EXTINGUISHERS, COAT HOOKS, LAVATORIES, ALL TOILET ROOM ACCESSORIES
- 8) ALL GLAZING TO BE TEMPERED SAFETY GLASS.
- 9) GLASS CONTRACTOR TO DETERMINE IF STOREFRONT THAT IS BEING REMOVED CAN BE RELOCATED AS INDICATED. IF NOT, PROVIDE NEW.



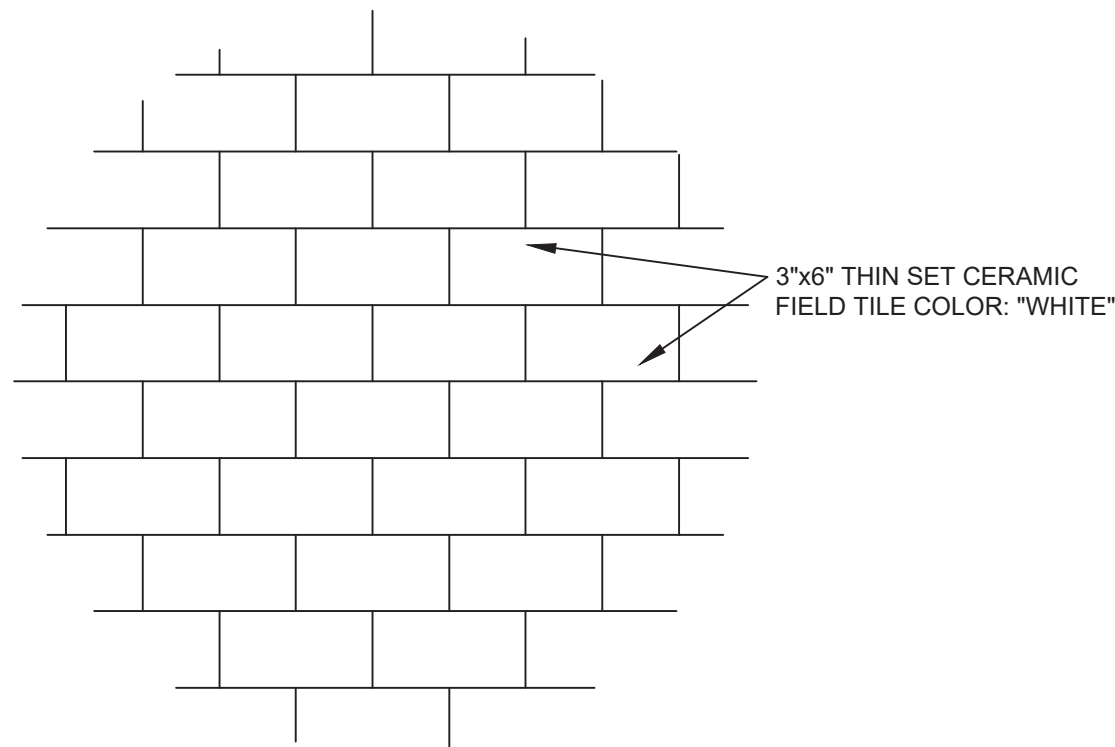
3 ONE-WAY WINDOW DETAILS  
Scale: 1/4"=1'-0"



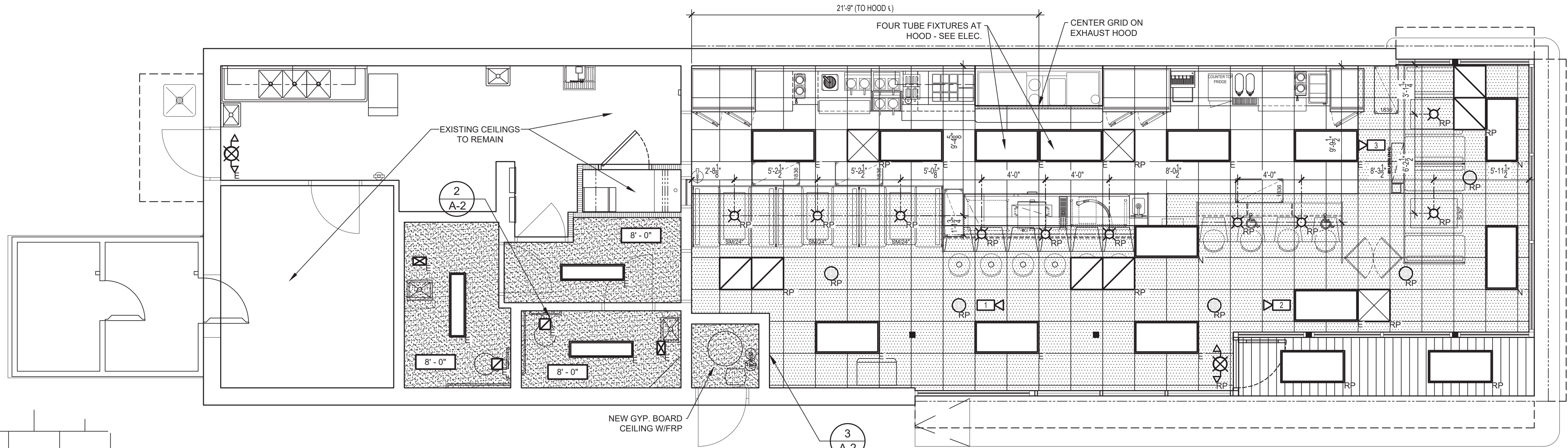
D:\Children's Design Dropbox\kelly Clippan\WH\Florida\Lake City\388 45YR REMODEL #173663388 Remodel 45YR.dwg, 5/3/2024 4:53:40 PM, DWG TO PDF, p03



2 TYPICAL TILE ACCENT STRIPE  
A-2 Scale: N.T.S.



3 TILE DETAIL  
A-2 Scale: N.T.S.



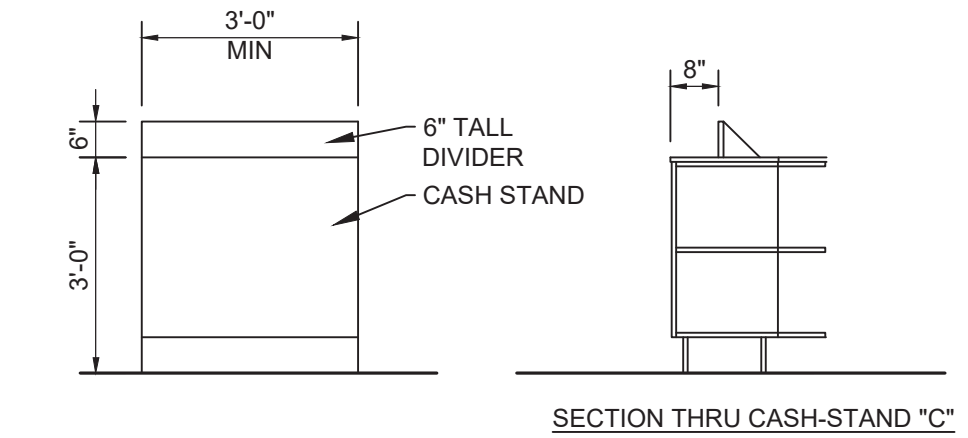
1 REFLECTED CEILING PLAN  
A-2 Scale: 1/4"=1'-0"

NOTES

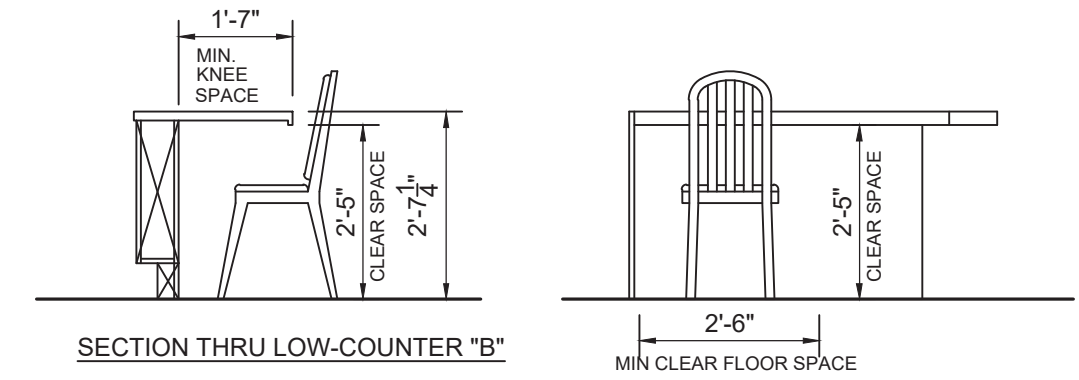
- ALL CEILING TILES IN RESTAURANT AND VESTIBULE AREAS SHALL BE NON-COMBUSTIBLE P.V.C. LAY-IN TILES IN AN ALUMINUM GRID.
- CEILING GRID AND LAY-IN TILES TO BE PROVIDED BY OWNER.
- CEILING GRID AND TILES TO BE INSTALLED BY CEILING CONTRACTOR WITH FULL COOPERATION OF OTHER TRADES.
- CENTER GLOBE LIGHTS OVER TABLE AT BOOTHS AND FRONT TO BACK OVER LOW COUNTERS.

LEGEND

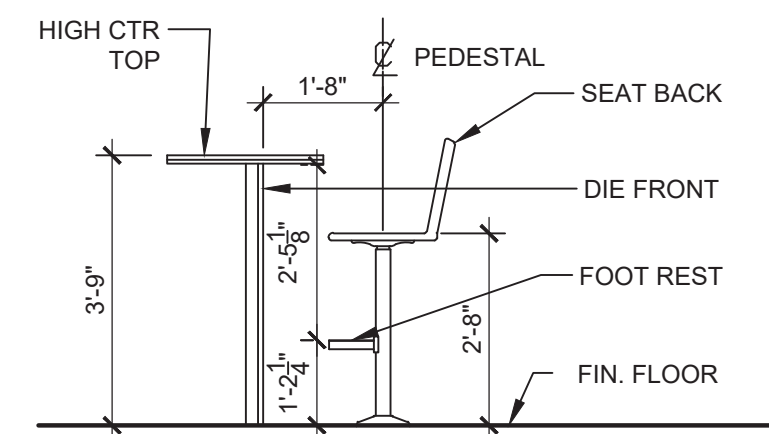
	TWO TUBE 24"x48" LIGHT FIXTURE		10"x6" SUPPLY REGISTER
	GLOBE LIGHT		8"x8" EXHAUST GRILL
	MUSIC MACHINE SPEAKER PROVIDED BY OWNER & INSTALLED BY GENERAL CONTRACTOR. (PREINSTALLED IN CEILING TILES)		C.C.T.V. CAMERA - SEE ELECTRICAL
	COMBINATION EXIT/EMERGENCY EGRESS LIGHT.		24"x24" PERFORATED GRAY PVC CEILING TILE
	24"x48" RETURN AIR FILTER GRILLES		24"x24" SMOOTH GRAY PVC CEILING TILE
	CEILING HEIGHT ABOVE FINISH FLOOR		GYP BOARD WITH FRP CEILING
	24"x24" HVAC SUPPLY DIFFUSER (LAY-IN)		REPLACING FIXTURE
			EXISTING FIXTURE TO REMAIN
			NEW FIXTURE



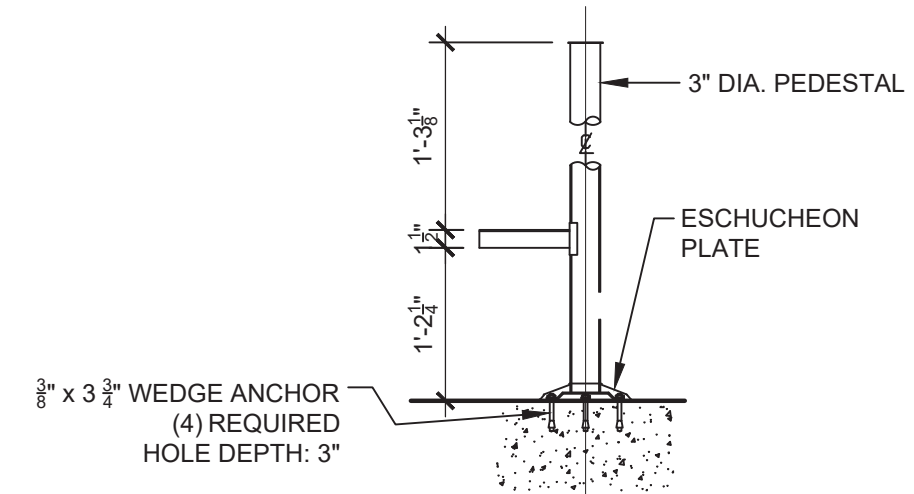
4 CASH-STAND ELEVATION  
A-2 Scale: 3/8"=1'-0"



5 HANDICAP SEATING AT LOWCOUNTER  
A-2 Scale: 3/8"=1'-0"



6 HIGH COUNTER STOOL DETAIL  
A-2 Scale: 3/8"=1'-0"



7 PEDESTAL DETAIL  
A-2 Scale: 3/8"=1'-0"



MARK D. PAVEY, AIA - ARCHITECT  
P.O. BOX 1365  
GULF SHORES, AL 36547  
(334) 946-3624 (206) 350-0593 (FAX)  
These drawings and the design represented herein are the exclusive property of Waffle House Inc. Reproduction or any use of these drawings other than for the project intended without the express written consent of Waffle House Inc. is prohibited. Any unauthorized use will be subject to legal action.

#	DATE	BY	REVISIONS

"A UNIQUE AMERICAN PHENOMENON"  
**W A F F L E**  
**H O U S E**  
"AMERICA'S PLACE TO EAT, AMERICA'S PLACE TO WORK"  
5986 Financial Drive, Norcross, GA 30071  
(770) 725-5700

REFLECTED CEILING PLAN, WALL TILE AND SEATING DETAILS	30 SEAT / 15 STATION / REMODEL 45YR
CHECKED BY: MDP/EJ	LOCATION: UNIT 388 2963 W. U.S. HIGHWAY 90 LAKE CITY, FLORIDA 32055
DRAWN BY: MM	

WAFFLE HOUSE MOD	
JOB NO: 73366	SHEET A-2
DATE: 03/20/2024	OF SHEETS

REMODEL 45YR



#	DATE	REVISIONS	BY

“A UNIQUE AMERICAN PHENOMENON”  
**W A F F L E**  
**H O U S E**

“AMERICA’S PLACE TO EAT, AMERICA’S PLACE TO WORK”  
5986 Franciscan Drive, Norcross, GA 30071  
(770) 725-5700

EXTERIOR ELEVATIONS  
30 SEAT / 15 STATION / REMODEL 45YR  
LOCATION: UNIT 388  
2963 W. U.S. HIGHWAY 90  
LAKE CITY, FLORIDA 32055

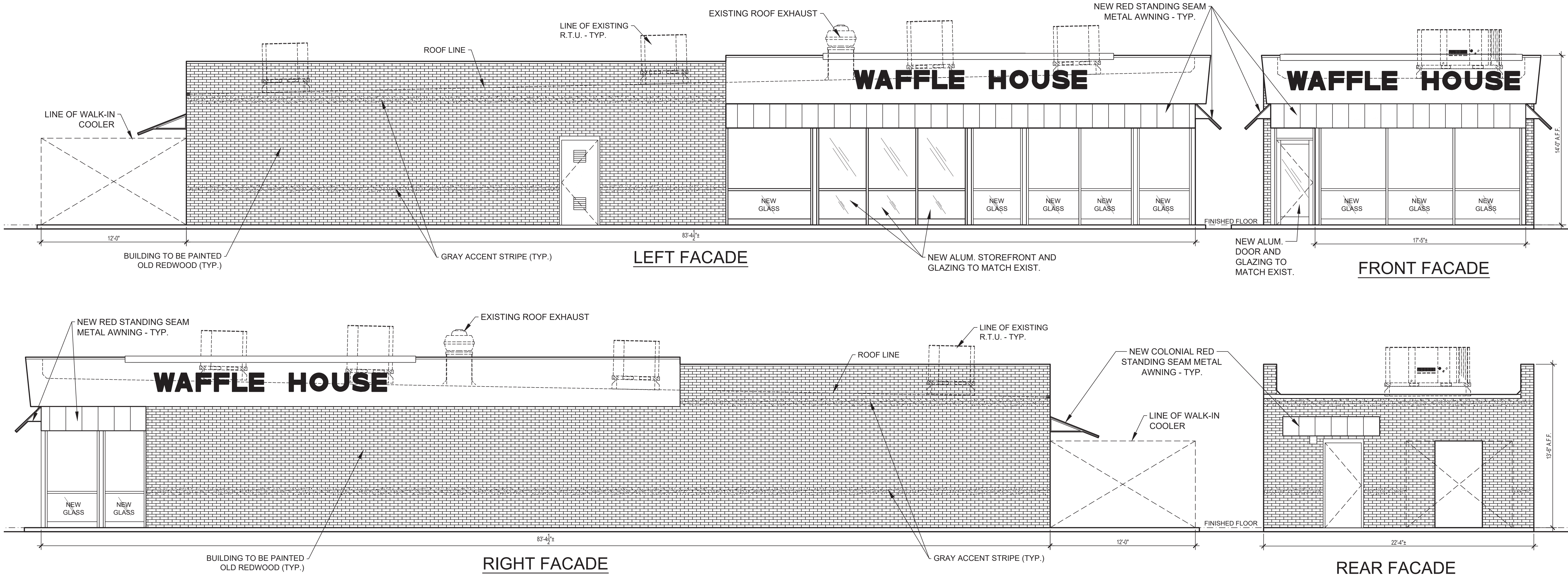
CHECKED BY:  
MDP/EJ

DRAWN BY:  
MM

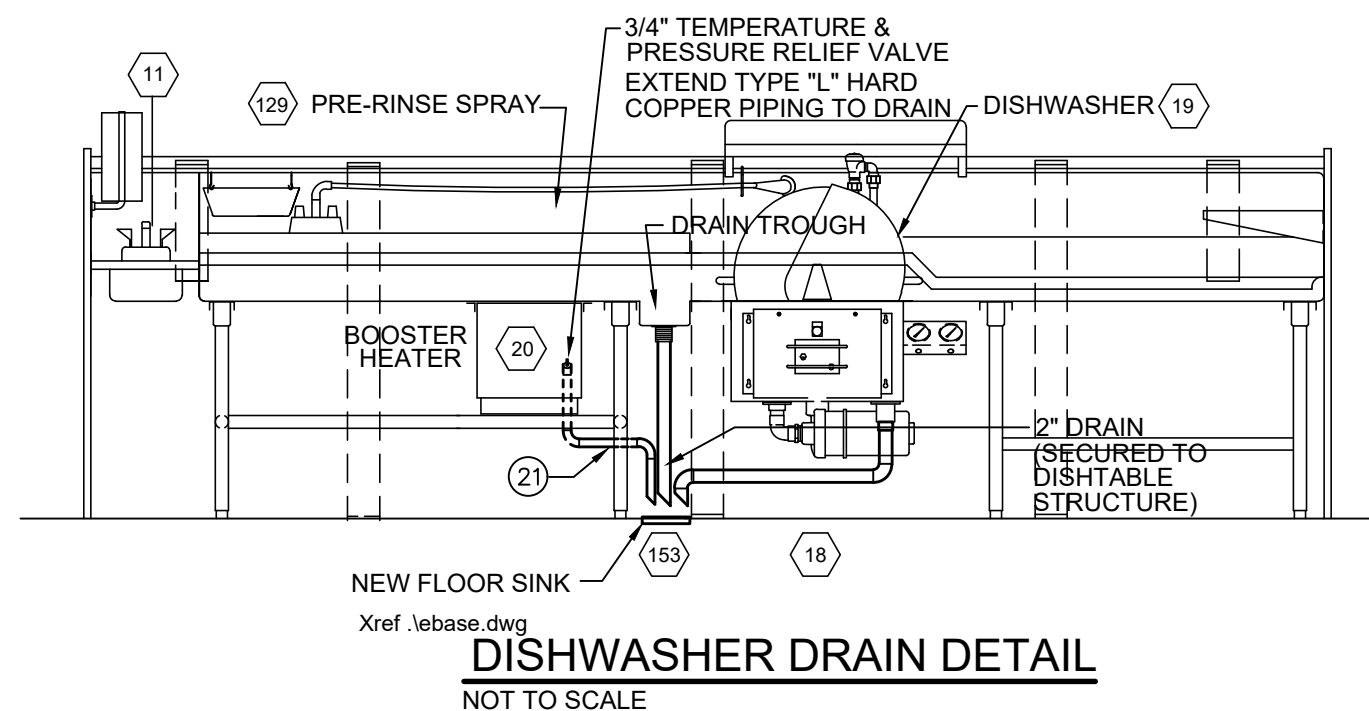
WAFFLE HOUSE MOD  
JOB NO:  
73366  
DATE:  
03/20/2024

SHEET  
**A-3**  
OF  
SHEETS

REMODEL 45YR







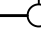



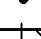


**KEY NOTES (APPLY TO THIS SHEET ONLY)**

- 1 3" FLOOR DRAIN (PLASTIC ODDITIES PAB-722-RS) OR APPROVED EQUAL.
- 2 3" FLOOR DRAIN WITH TRAP PRIMER (FEMALE IRON PIPE) CONNECTION  
(PLASTIC ODDITIES PHD-822-RS) OR APPROVED EQUAL.
- 3 3" HUB DRAIN.
- 4 3" WALL CLEANOUT WITH STAINLESS STEEL COVER. INSTALL 24" ABOVE  
FLOOR (INSIDE) OR FINAL GRADE (OUTSIDE).
- 5 4" WALL CLEANOUT WITH STAINLESS STEEL COVER. INSTALL 24" ABOVE  
FLOOR (INSIDE) OR FINAL GRADE (OUTSIDE).
- 6 EXISTING WALL CLEANOUT TO REMAIN AND BE REUSED.
- 7 NEW P.V.C. CLEANOUT.
- 8 NEW 4" JOSAM 56040 HEAVY DUTY CLEANOUT IN PAVEMENT.
- 9 EXISTING VENT THROUGH ROOF (V.T.R.) TO REMAIN AND BE REUSED.
- 10 4" VENT BELOW GRADE (OFFSET AT 45° ANGLE ABOVE CENTER LINE OF  
WASTE PIPE AS REQUIRED). NO FLAT VENTS.
- 11 (NOT USED).
- 12 VITRA MODEL 6522-0033-0075 FLOOR MOUNTED TOILET AND SLOAN ROYAL  
III - YBYK FLUSH VALVE WITH STANDOFF RING BRACE, K-4670-C WHITE  
PLASTIC SEAT. INSTALL VALVE HANDLE ON "DOOR" (OPEN) SIDE OF FLUSH  
VALVE OR EQUAL. (COORDINATE FLUSH VALVE HEIGHT WITH  
QUALITY REQUIREMENTS AND TOILET ELEVATION DETAILS ON  
ARCHITECTURAL SHEETS). MOUNT STANDOFF RING BRACE JUST BELOW  
FLUSH VALVE. SEAT SHALL BE 17"-19" ABOVE FINISHED FLOOR (FURNISHED  
BY OWNER). APPROVED EQUAL PRODUCTS ARE ACCEPTABLE.
- 13 VITRA MODEL 6281-0303-0030 HANDICAP LAVATORY (20" X 17") WITH  
SYMMONS S-250-2-FR-G (0.5 G.P.M./WRIST BLADE HANDLE) FAUCET,  
ANGLE SUPPLIES AND P-TRAP (OR EQUAL). SECURE TO 2" X 8" TREATED  
WOOD (INSTALLED BETWEEN STUDS) CONCEALED IN WALL (FURNISHED  
BY OWNER). APPROVED EQUAL PRODUCTS ARE ACCEPTABLE.
- 14 VITRA MODEL 6281-0303-0030 HANDICAP LAVATORY (20" X 17") WITH  
SYMMONS S-250-2-FR-G (0.5 G.P.M./WRIST BLADE HANDLE) FAUCET,  
ANGLE SUPPLIES AND OFFSET P-TRAP (OR EQUAL). HANDICAP  
REQUIREMENTS TO BE MET WITH "HANDI-GUARD" INSULATION GLOVES.  
SECURE TO 2" X 8" TREATED WOOD (INSTALLED BETWEEN STUDS)  
CONCEALED IN WALL (FURNISHED BY OWNER). APPROVED EQUAL  
PRODUCTS ARE ACCEPTABLE.
- 15 4" FLOOR CLEANOUT WITH REMOVABLE COVER. CLEANOUT COVER TO BE  
FLUSH WITH FLOOR. COORDINATE WITH GC FOR EXACT LOCATION OF  
CLEANOUT.
- 16 NEW 1,500 GALLON PRECAST TRAFFIC BEARING GREASE TRAP.
- 17 OFFSET VENT ABOVE CEILING.
- 18 NEW TRAFFIC MANHOLE RING WITH COVER TO FINISHED PAVING.
- 19 3/4" CONDENSATE LINE PROVIDED WITH COOLER.
- 20 FOR CONTINUATION, SEE SITE PLAN.
- 21 EXTEND COPPER PIPING FROM BOOSTER HEATER T & P VALVE TO HUB DRAIN  
(SECURE TO DISHABLE STRUCTURE).
- 22 PIPING FROM ICE MAKER TO HUB DRAIN.
- 23 PLUMBING CONTRACTOR SHALL INSTALL TURNDOWN ELBOW JUST  
INSIDE OF COOLER WALL AND STUB OUT AND SPILL CONDENSATE DRAIN  
TO HUB DRAIN WITH REQUIRED AIR GAP.

SEE KITCHEN EQUIPMENT DRAWINGS  
FOR EXACT ROUGH-IN LOCATIONS.

KIT, EQUIP. FURNISHED BY K.E.C. (THAT HAS PLUMBING CONNECTIONS)	
2	COFFEE MACHINE
5	COKE MACHINE/ICE BIN
5A	CARBONATOR
11	HAND SINK (AT DISHTABLE)
18	DISH TABLE
19	DISHWASHER
20	BOOSTER HEATER
65	ICE MACHINE
69	3 COMPARTMENT SINK
71	HAND SINK (REAR SUPPORT AREA)
129	PRE-RINSE SPRAY ASSEMBLY
135	VEGETABLE PREP SINK
153	12" X 12" FLOOR SINK

PLUMBING LEGEND		
ABBREVI	DESCRIPTION	SYMBOL
CW	COLD WATER	— — — — —
HW	HOT WATER	- - - - -
HWC	HOT WATER CIRCULATING LINE	— — — — —
W	WASTE	— — — — —
V	VENT	— — — — —
VTR	VENT THRU ROOF	
HD	HUB DRAIN W/TRAP	— — — — —
FD	FLOOR DRAIN W/TRAP	— — — — —
FS	FLOOR SINK	— — — — —
HB	HOSE BIBB	— — — — —
PRV	PRESSURE REDUCING VALVE	
T&P	PRESS. & TEMP. RELIEF VALVE	
BV	BALL VALVE	— — — — —
WC	WATER CLOSET	
LAV	LAVATORY	
U	UNION	— — — — —
CO	CLEAN OUT (WALL)	— — — — —
CO	CLEAN OUT (FLOOR)	— — — — —
CO	2-WAY CLEANOUT	— — — — —
CV	CHECK VALVE	
ST	STRAINER	

"A UNIQUE AMERICAN PHENOMENON"

**W A F F L E  
H O U S E®**

"AMERICA'S PLACE TO EAT, AMERICA'S PLACE TO WORK"

5986 Financial Drive, Norcross, GA 30071  
(770) 729-5700

CHECKED BY: KKH	SANITARY SYSTEM & DETAILS
	30 SEAT / 15 STATION / REMODEL 45YR
	LOCATION: UNIT 388 2963 WEST US HWY 90 LAKE CITY, FLORIDA 32055
DRAWN BY: LWC	

PLUMBING	
JOB NO: 73366	SHEET <b>P-1</b>
DATE: 03/20/2024	OF SHEETS





# 2 E-1 TYPE "A" FIXTURE INSTALLATION DETAIL SCALE: NO SCALE

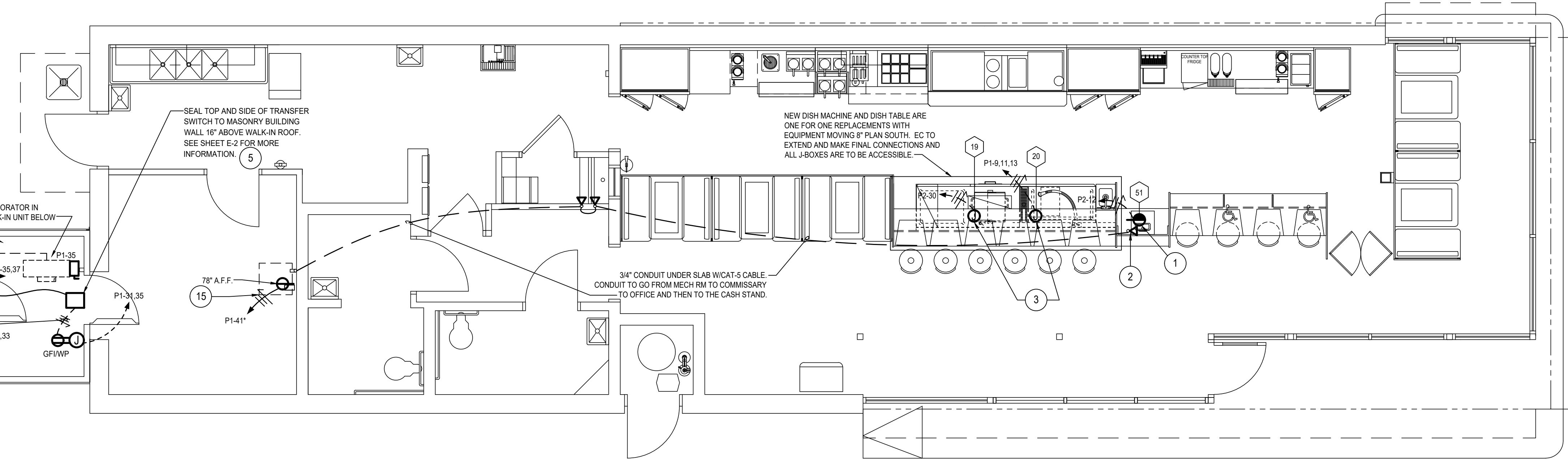


KITCHEN EQUIPMENT SCHEDULE						
TAG	ITEM	HP	KW	A	VOLT.	CONN. TYPE
2	COFFEE MAKER (2 UNITS)		3.2	15.5	120V, 1Ø	CORD & PLUG
5	COKE DISPENSER (TWO UNITS)		1.5	115V.		CORD & PLUG (EACH)
5A	CARBONATOR		7.0	115V.		
12	COUNTERTOP WARMER (3 UNITS)		1.2	10.0	120V.	CORD & PLUG
17	OMELET MIXER		0.1	0.8	120V.	CORD & PLUG
19	DISHWASHER		24.0	120V.		SOLID
20	BOOSTER HEATER		12.0		208V, 3Ø	SOLID
21	SANDWICH UNIT			15.0	115V.	CORD & PLUG
24	TOASTER (3 UNITS)		2.2	18.3	120V.	CORD & PLUG
25	REFRIGERATOR			12.0	115V.	
26	WAFFLE BAKER (4 UNITS)		1.8	15.0	120V.	CORD & PLUG
27	REFRIGERATOR			12.0	115V.	CORD & PLUG
28	REFRIGERATOR			12.0	115V.	CORD & PLUG
47	COFFEE WARMER		0.2	1.66	120V.	CORD & PLUG
47	MUSIC MACHINE		0.6	5.5	120V.	CORD & PLUG
51	CASH REGISTER			0.4	120V.	CORD & PLUG
52	FAN CONTROL SWITCH					
65	ICE MACHINE			13.0	115V.	CORD & PLUG
49	JUICE MACHINE			3.0	115V.	CORD & PLUG
50	JUICE MACHINE DOUBLE BOWL			3.0	115V.	CORD & PLUG

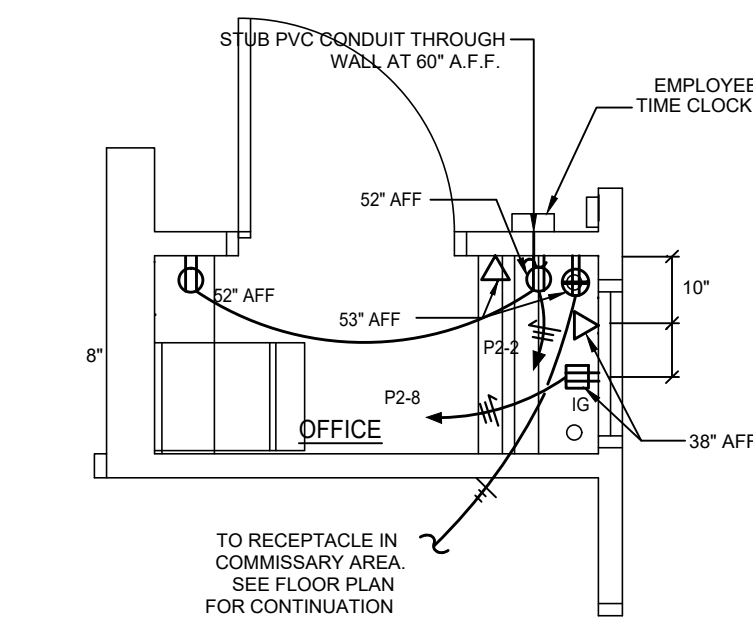
- NOTES (APPLY TO 1/E-2 UNLESS NOTED OTHERWISE):
- STUB CONDUIT THROUGH BOTTOM OF CASH REGISTER STAND AND EXTEND USING 'SEAL-TITE' TO 2" X 4" BOX SURFACE MOUNTED TO RECEIVE ISOLATED GROUND RECEPTACLE FOR CASH REGISTER. SEAL AROUND CONDUIT WHERE IT PENETRATES BOTTOM OF CASH REGISTER STAND
  - STUB CONDUIT THROUGH BOTTOM OF CASH REGISTER STAND AND EXTEND USING 'SEAL-TITE' TO 2" X 4" SURFACE MOUNTED BOX TO RECEIVE TELEPHONE JACK. SEAL AROUND CONDUIT WHERE IT PENETRATES BOTTOM OF CASH REGISTER STAND
  - CONDUIT STUB-UPS UNDER DISH AREA SHALL BE RIGID METAL CONDUIT TO THE BOTTOM OF THE CONCRETE SLAB TO PREVENT DAMAGE FROM MOPPING ETC. RIGID METAL CONDUIT STUB-UPS SHALL BE PROVIDED WITH APPROVED GROUND PATH.
  - 2" X 4" FLUSH MOUNTED JUNCTION BOX MOUNTED 18" A.F.F. TO ACCEPT COVER PLATE PROVIDED BY MUSIC SYSTEM SUPPLIER. (PRIMARY LOCATION OF MUSIC MACHINE.) EXTEND 1/2". (FOR SPEAKER WIRING) UNDER SLAB TO JUNCTION BOX AT SECONDARY LOCATION.
  - TRANSFER SWITCH TO BE BASED ON SQUARE D "QO LOAD CENTER", CATALOG # QO1DM10030TRBR, SERIES G04, TYPE 3R ENCLOSURE, 120/204 VAC MAX. 1 PH 3 W 60 HERTZ. MOUNTED 16" ABOVE COOLER/FREEZER LID. FURNISH AND INSTALL HUBBELL 2715, 30A, 125/250V RECEPTACLE IN BOTTOM KNOCK OUT WITH SPRING LOADED WEATHER PROOF COVER.
  - NOT USED.
  - NOT USED.
  - PROVIDE JUNCTION BOX FOR INTERFACE WITH HOOD FIRE SUPPRESSION SYSTEM. COORDINATE EXACT LOCATION PRIOR TO ROUGH-IN (CONTROL BOX AND SYSTEM BY OTHERS). SEE 6/E-2.
  - NOT USED.
  - ALL RECEPTACLES IN THIS AREA SHALL BE FLUSH MOUNTED IN MASONRY WALL AND SUPPLIED VIA CONCEALED CONDUIT.
  - INSTALL OWNER FURNISHED DUPLEX RECEPTACLE WITH COMBINATION 15A, 125V, TWISTLOCK CONFIGURATION AND 15A, 125V PARALLEL BLADE, HUBBELL #4792, OR EQUAL, FLUSH IN WALL 42" A.F.F.
  - INSTALL OWNER FURNISHED NEMA L5-20R SINGLE RECEPTACLE, HUBBELL #2310, OR EQUAL, FLUSH IN WALL 42" A.F.F.
  - INSTALL OWNER FURNISHED NEMA L5-15R SINGLE RECEPTACLE, HUBBELL #44710, OR EQUAL, FLUSH IN WALL 42" A.F.F.
  - 20A 120V, DUPLEX RECEPTACLE FOR CCTV MONITOR. SURFACE MOUNT ON CEILING, NEXT TO WALL. USE CLOSEST LIGHTING CIRCUIT.
  - SINGLE TWIST-LOCK RECEPTACLE. 15A 120V (DEDICATED CIRCUIT), 40" A.F.F. PROVIDE 2" PVC CONDUIT IN THE WALL NEXT TO THE CIRCUIT RUNNING UP TO THE PLENUM. SEE E-1 FOR MORE INFO.

- NOTES
- BRANCH CIRCUITS SERVING THE EQUIPMENT IN THE BACKBAR SHALL BE COMPRISED OF AN UNGROUNDED (PHASE) CONDUCTOR, A SEPARATE NEUTRAL CONDUCTOR AND A SEPARATE GROUNDING CONDUCTOR FOR EACH INDIVIDUAL BRANCH CIRCUIT SO AS TO OPERATE THE GFCI CIRCUIT BREAKER AS REQUIRED IN NEC 210.8(B). THIS WIRING SHALL BE COMBINED IN CONDUITS AND JUNCTION BOXES ONLY AS SHOWN ON THE DRAWINGS.
  - OTHER BRANCH CIRCUITS MAY BE TWO(2), OR THREE(3) POLE CIRCUITS EXTENDED FROM EITHER PANEL (P1 OR P2) TO OUTLET LOCATIONS AS INDICATED ON THE PLAN DRAWINGS. EACH MULTI-POLE CONNECTION WILL CONSIST OF ONE UNGROUNDED CONDUCTOR PER PHASE PLUS ONE(1) NEUTRAL CONDUCTOR.
  - BRANCH CIRCUIT WIRING MAY BE COMBINED WITH A MAXIMUM OF SIX (6) TOTAL PHASE AND NEUTRAL CONDUCTORS IN THE SAME, JUNCTION BOX AND IN THE SAME CONDUIT BACK TO THE PANELBOARD, PROVIDED THAT THE ALLOWABLE AMPACITIES ARE REDUCED PER THE NATIONAL ELECTRICAL CODE, TABLE 310.15(B)(2)(a).
  - ALL CONDUIT AND WIRING MOUNTED IN OR EXTENDED THROUGH CEILING CAVITY SHALL BE COORDINATED WITH OTHER TRADES TO AVOID ANY CONFLICTS WITH DUCTWORK INSTALLATION, ETC.

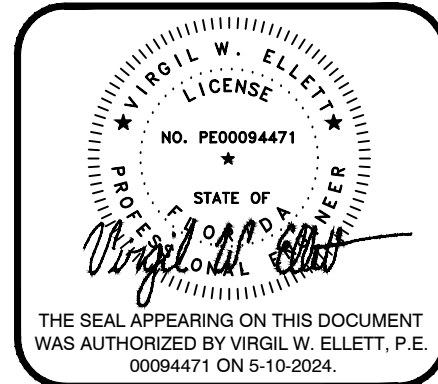
NOTE  
REFER TO SHEET K-1 FOR DIMENSIONED LOCATION OF SLAB STUB-UPS, TO DETERMINE EXACT ROUGH-IN LOCATIONS.



1 FLOOR PLAN - POWER  
SCALE: 1/4"=1'-0"



4 OFFICE PLAN  
E-2 SCALE: 3/8"=1'-0"



1 Point One Design, Ltd.  
Consulting Engineers  
9941 York Throat Drive North  
440-250-1800 Fax 440-250-1831  
central@pointonedesign.com

THESE DRAWINGS AND THE DESIGN REPRESENTED HEREIN ARE THE EXCLUSIVE PROPERTY OF WAFFLE HOUSE INC. REPRODUCTION OR ANY USE OF THESE DRAWINGS OTHER THAN FOR THE PROJECT INTENDED WITHOUT THE EXPRESS WRITTEN CONSENT OF WAFFLE HOUSE INC. IS PROHIBITED. ANY UNAUTHORIZED USE WILL BE SUBJECT TO LEGAL ACTION.

C24297

#	DATE	REVISIONS		BY

"A UNIQUE AMERICAN PHENOMENON"

**W A F F L E**

**H O U S E**

"AMERICA'S PLACE TO EAT, AMERICA'S PLACE TO WORK"

5986 Francis Drive, Norcross, GA 30071  
(770) 725-5700

POWER & SYSTEMS PLAN,  
ELEVATIONS, SCHEDULES & DETAILS

30 SEAT / 15 STATION / REMODEL 45YR

CHECKED BY:  
VWE

DRAWN BY:  
LWC

UNIT 388  
2963 WEST US HWY 90  
LAKE CITY, FLORIDA 32055

ELECTRICAL

JOB NO:  
73366

DATE:  
03/20/2024

SHEET  
E-2  
OF  
SHEETS

REMODEL 45YR



DIVISION 16
ELECTRICAL
16010 GENERAL PROVISIONS
16012 CODES AND STANDARDS
16020 ELECTRICAL SYSTEMS SCHEDULE
16030 TESTS
16100 BASIC METHODS AND MATERIALS
16110 RACEWAYS
16120 CONDUCTORS
16130 OUTLET BOXES AND DEVICES
16134 PANELBOARDS AND MAIN DISTRIBUTION
16150 MOTOR AND MOTOR CONTROLS
16190 SUPPORTING DEVICES
16450 GROUNDING
16480 FEEDER CIRCUITS
16485 BRANCH CIRCUITS
16500 LIGHTING - INTERIOR
16600 SPECIAL SYSTEMS - COMPUTER (P.O.S. SYSTEM)
16700 SOUND SYSTEMS
16740 TELEPHONE
16900 CONTROLS AND INSTRUMENTATION

DIVISION 16 ELECTRICAL

16010 GENERAL PROVISIONS

- .01 SEE DRAWINGS FOR A LISTING OF OWNER FURNISHED ITEMS. EXCEPT WHERE PORTIONS OF THESE SPECIFICATIONS ARE MORE EXACTING, WORK OF THIS DIVISION SHALL COMPLY WITH ALL APPLICABLE PROVISIONS OF THE GENERAL SCOPE OF WORK. BEFORE SUBMITTING PROPOSAL, EXAMINE ALL DRAWINGS RELATING TO THIS WORK, VERIFY ALL GOVERNING CONDITIONS AT THE SITE, DETERMINE EXACT EXTENT OF WORK REQUIRED FOR THE LOCAL UTILITY COMPANIES; BECOME FULLY INFORMED AS TO THE EXTENT AND CHARACTER OF THE WORK REQUIRED AND ITS RELATION TO WORK OF OTHER TRADES. NO CONSIDERATION WILL BE GRANTED FOR ANY ALLEGED MISUNDERSTANDINGS OF THE MATERIALS REQUIRED TO BE FURNISHED AND/OR INSTALLED, OR WORK TO BE PERFORMED. IT SHALL BE UNDERSTOOD THAT THE SUBMISSION OF A PROPOSAL IS AN AGREEMENT TO ALL CONDITIONS REFERRED TO HEREIN OR INDICATED ON THE DRAWINGS.
- .02 REVIEW THE DRAWINGS AND SPECIFICATIONS OF ALL TRADES, PARTICULARLY THOSE SECTIONS DESCRIBING ELECTRICALLY OPERATED EQUIPMENT, AND BECOME FAMILIAR WITH THE WORK REQUIRED THEREBY. AT THE CONCLUSION OF THE WORK, BE RESPONSIBLE FOR THE PROPER WIRING AND FUNCTIONING OF ALL ELECTRICALLY OPERATED EQUIPMENT FURNISHED AND/OR INSTALLED UNDER THIS CONTRACT.
- .03 NO EXTRA COMPENSATION WILL BE PAID FOR CONDITIONS EXISTING BEFORE THE CONTRACT IS SIGNED. THIS INCLUDES BOTH EXISTING SITE CONDITIONS AND ARCHITECTURAL CONDITIONS OF THE NEW BUILDING.
- .04 THE CONTRACTOR SHALL OBTAIN ALL PERMITS FOR HIS WORK UNDER THE CONTRACT, AND SHALL PAY ALL EXPENSES IN CONNECTION THEREWITH. HE SHALL BE RESPONSIBLE FOR ALL NOTICE TO THE INSTALLATION AUTHORITIES AND TO THE ARCHITECT/ENGINEER SO THAT THE WORK MAY BE INSPECTED BEFORE COVERING. THE CONTRACTOR SHALL FURNISH OWNER WITH CERTIFICATES OF INSPECTION.
- .05 NO DEVIATION FROM DRAWINGS AND/OR SPECIFICATIONS SHALL BE PERMITTED WITHOUT WRITTEN APPROVAL FROM THE OWNER OR ARCHITECT/ENGINEER.
- .06 ALL PERMIT FEES, TEMPORARY SERVICE, INSPECTION FEES AND OTHER REQUIREMENTS SHALL BE PAID AND COMPLETED BY THE ELECTRICAL CONTRACTOR. EVIDENCE OF COMPLETION SHALL BE APPARENT PRIOR TO FINAL ACCEPTANCE OF WORK. ALL CERTIFICATES SHALL BE FORWARDED TO WAFFLE HOUSE CORPORATION.
- .07 THE WORK OF THIS CONTRACTOR SHALL CONSIST OF FURNISHING EVERYTHING NECESSARY FOR A COMPLETE OPERATING ELECTRICAL SYSTEM, IN STRICT ACCORDANCE WITH THE DRAWINGS AND SPECIFICATIONS. IT INCLUDES ALL SUCH WORK WHETHER LISTED UNDER THIS OR ANY OTHER DOCUMENT WHICH FORMS A PART OF THE SPECIFICATION AND CONTRACT. HIS WORK, IN THE MAIN, SHALL INCLUDE, BUT IS NOT RESTRICTED TO, THE FOLLOWING ITEMS.
- A. PROVIDE A TEMPORARY SERVICE FOR THE USE OF ALL TRADES DURING CONSTRUCTION, AS REQUIRED BY THE GENERAL CONTRACTOR. GENERAL CONTRACTOR SHALL PAY UTILITY USE COSTS UP TO TIME OF OCCUPANCY BY WAFFLE HOUSE.
- B. PROVIDE A COMPLETE ELECTRICAL DISTRIBUTION SYSTEM FOR LIGHT AND POWER, FROM POINT OF SERVICE THROUGH DISTRIBUTION SYSTEM TO PANELS, AND TO ALL OUTLETS, EQUIPMENT AND DEVICES AS INDICATED ON THE DRAWINGS.
- C. PROVIDE ELECTRICAL CONNECTIONS FOR EQUIPMENT OF OTHER TRADES.
- D. CONNECTION OF ALL MOTORS, STARTERS, CONTROLS, PILOT DEVICES OR DISCONNECTS, WHETHER FURNISHED BY THE CONTRACTOR, THE OWNER, OTHER SUBCONTRACTOR(S) OR OTHER PARTIES, SUCH AS EQUIPMENT SUPPLIERS.
- E. ALL ELECTRICAL WORK INCIDENTAL TO OTHER TRADES FOR A COMPLETE WORKING INSTALLATION OF THEIR ELECTRICALLY DRIVEN EQUIPMENT (EXCEPT HVAC CONTROL WIRING). NOTE: HVAC CONTROL CONDUIT SHALL BE INSTALLED AS SHOWN UNDER THIS CONTRACT.
- F. FURNISHING AND INSTALLING ALL CONDUCTORS AND RACEWAYS FOR ELECTRICAL EQUIPMENT.
- G. INSTALLATION OF ALL OWNER FURNISHED FLOODLIGHTS. FLOODLIGHT POLES AND LIGHTING FIXTURES, AS SCHEDULED ON THE DRAWINGS AND IN ACCORDANCE WITH ARCHITECTURAL DETAILS.
- H. CONNECTION OF ALL AIR CONDITIONING, HEATING, PUMPING, VENTILATION UNITS AND EXHAUST FANS AS SPECIFICALLY CALLED FOR ON THE DRAWINGS AND SPECIFIED HEREIN.
- I. TEMPORARY AND EMERGENCY WIRING AS REQUIRED.
- J. INSTALLATION AND WIRING OF ALL OWNER FURNISHED PANELBOARDS AS INDICATED ON THE DRAWINGS.
- K. FURNISH AND INSTALL TRANSFORMERS FOR ALL EQUIPMENT WHETHER FURNISHED BY THIS CONTRACTOR, THE OWNER, OR OTHER PARTIES, WHERE SUCH EQUIPMENT HAS A VOLTAGE RATING UNSUITABLE FOR THE SYSTEM IN WHICH APPLIED.

L. MANUALS AND CHARTS: FURNISH TO THE OWNER A COMPLETE SET OF ALL OPERATING INSTRUCTIONS, MAINTENANCE INSTRUCTIONS, LITERATURE AND INFORMATION PERTAINING TO ALL ELECTRICAL EQUIPMENT.

16012 CODES AND STANDARDS

- .01 THE WORK PERFORMED SHALL BE IN ACCORDANCE WITH THE LATEST EDITION OF THE NATIONAL ELECTRICAL CODE. NOTHING CONTAINED IN THESE SPECIFICATIONS OR DRAWINGS SHALL BE SO CONSTRUED AS TO CONFLICT WITH ANY LOCAL, MUNICIPAL, STATE, UTILITY COMPANY AND NATIONAL BOARD OF FIRE UNDERWRITERS REGULATIONS GOVERNING THE INSTALLATION OF THE WORK SPECIFIED HEREIN. ALL SUCH LAWS, ORDINANCES, AND REGULATIONS, WHERE THEY APPLY TO THIS WORK, ARE HEREBY INCORPORATED INTO, AND MADE A PART OF, THESE SPECIFICATIONS. ALL SUCH REQUIREMENTS SHALL BE SATISFIED AT NO ADDITIONAL EXPENSE TO THE OWNER.

16020 ELECTRICAL SYSTEMS SCHEDULE

- .01 REFER TO THE DRAWINGS FOR WIRING DIAGRAMS, PANELBOARD SCHEDULES, RISER DIAGRAM, EQUIPMENT SCHEDULE, ELECTRICAL SYSTEMS REQUIREMENTS, ETC.

16030 TESTS

- .01 PROVIDE ALL NECESSARY INSTRUMENTS AND SPECIAL APPARATUS TO CONDUCT ANY TEST THAT MAY BE REQUIRED TO INSURE THE SYSTEM IS FREE OF ALL IMPROPER GROUNDS AND SHORT CIRCUITS AND THAT ALL FEEDERS ARE PROPERLY BALANCED. THE SYSTEM INSTALLED SHALL BE CHECKED FOR QUALITY, CAPACITY, AND COMPLETENESS TO CONFORM WITH THE FULL REQUIREMENTS AND INTENT OF THE DRAWINGS AND SPECIFICATIONS.

16100 BASIC METHODS AND MATERIALS

- .01 ELECTRICAL MATERIALS, APPLIANCES, EQUIPMENT AND DEVICES FOR WHICH THERE ARE UNDERWRITERS LABORATORIES STANDARD REQUIREMENTS SHALL HAVE LABELS ATTACHED TO INDICATE COMPLIANCE WITH THOSE REQUIREMENTS. WHERE MATERIALS DO NOT BEAR SUCH A LABEL, CERTIFICATE OF COMPLIANCE SHALL BE FURNISHED.
- .02 ALL MATERIALS SHALL BE NEW AND OF FIRST QUALITY, FREE OF DEFECTS.

16110 RACEWAYS

- .01 ALL CONDUCTORS SHALL BE CONTAINED IN RACEWAYS.
- .02 ALL CONDUIT RACEWAYS BELOW FLOOR SLAB AND RUN BELOW EXTERIOR FINISHED GRADE SHALL BE P.V.C. UNLESS OTHERWISE NOTED. RIGID GALVANIZED STEEL IF RUN BELOW SLAB OR FINISHED EXTERIOR GRADE SHALL BE PAINTED WITH TWO (2) COATS OF BITUMASTIC PAINT. THIS PAINTING SHALL BE APPLIED TO CONDUIT UP TO A POINT 2" ABOVE FLOOR SLAB. CONDUITS RUN BELOW FLOOR SLAB SHALL HAVE A MINIMUM COVER OF 12" AND THOSE RUN BELOW EXTERIOR FINISHED GRADE SHALL HAVE A MINIMUM COVER OF 24" IN NON-VEHICLE TRAFFIC AREAS AND 30" IN VEHICLE TRAFFIC AREAS. INSTALLATION OF P.V.C. CONDUIT IN TRENCHES SHALL BE BACK FILLED WITH FINE BACK FILL (NO ROCKS LARGER THAN 1/4" DIAMETER). CONTRACTOR SHALL FILL EXTERIOR TRENCHES TO WITHIN 4" OF TOP (FINISHED GRADE), THEN LAY A YELLOW RIBBON TAPE (USED IN INDUSTRY FOR THIS PURPOSE) ALONG TRENCH, THEN FINISH BACKFILL.
- .03 RIGID CONDUIT SHALL BE HOT-DIPPED GALVANIZED, INCLUDING THREADS. P.V.C. SHALL BE SCHEDULE 40.
- .04 FLEXIBLE METALLIC CONDUIT (GREENFIELD) SHALL BE USED FOR ALL CONNECTIONS TO MOTORS AND VIBRATING EQUIPMENT, BUT IN LENGTHS NOT TO EXCEED LAST 18" OF RUN UNLESS NOTED OTHERWISE. P.V.C. JACKETED FLEXIBLE METAL CONDUIT SHALL BE USED IN ALL EXPOSED LOCATIONS.
- .05 ELECTRICAL METALLIC TUBING (EMT) MAY BE USED FOR ALL PURPOSES EXCEPT AS INDICATED ABOVE. ALL FITTINGS (COUPLINGS AND CONNECTORS) SHALL BE STEEL. COMPRESSOR RING TYPE
- .06 ALL RACEWAYS SHALL BE RUN CONCEALED IN FINISHED AREAS UNLESS NOTED.
- .07 WHERE EXPOSED RACEWAYS ARE ALLOWED OR INDICATED, THEY SHALL PRESENT A NEAT APPEARANCE, AND ALL RUNS BOTH EXPOSED AND CONCEALED SHALL BE PARALLEL OR PERPENDICULAR TO THE BUILDING LINES AND TO EACH OTHER WITHOUT INTERFERENCE WITH OTHER TRADES OR EQUIPMENT. SUPPORTS TO BE ONE (1) HOLE CAST STRAPS, KINDORF OR EQUAL. SURFACE OR TRAPEZE HANGERS, SPLIT HANGERS WITH APPROPRIATE ROD HANGERS AND FITTINGS. PERFORATED STRAP IRON SHALL NOT BE USED.
- .08 ALL RACEWAYS SHALL LIE FLAT TO RUNNING SURFACES AND SHALL BE OFFSET WHERE ENTERING BOXES, ETC.
- .09 DURING CONSTRUCTION, ALL OPEN ENDS OF CONDUIT SHALL BE KEPT PLUGGED OR CAPPED. USE T&B 1470 SERIES PLUGS.
- .10 CONDUITS EXTENDED BEYOND THE BUILDING ENVELOPE (CONDITIONED AREA) SHALL BE SEALED TO PREVENT THE ENTRY OF MOISTURE, WATER VAPOR, DUST, INSECTS, ETC..
- .11 FIRE SEALING RATED PENETRATIONS
- A. WHERE DUCTWORK, PIPING, CONTROL TUBING, AND CONDUITS PENETRATE FIRE OR SMOKE RATED WALLS, EACH PENETRATION SHALL BE CLOSED WITH FIRE RETARDANT SEALANT. SEALANT SHALL BE INSTALLED WITH SUFFICIENT DEPTH TO MAINTAIN A FIRE ENDURANCE RATING EQUIVALENT TO THAT OF THE ADJACENT WALL RATING AFTER SEALANT HAS SET. SEALANT SHALL BE INSTALLED IN STRICT ACCORDANCE WITH MANUFACTURER'S RECOMMENDATIONS.
- B. FIRE RETARDANT SEALANT SHALL BE UL CLASSIFIED IN ACCORDANCE WITH ASTM E814. FORMING AND BACKING MATERIAL INSTALLED WITH THE SEALANT SHALL BE BULK CERAMIC FIBER OR RIGID FIBERBOARD RATED FOR 2200°F. MATERIAL SHALL BE 3M COMPANY 303 FIRE BARRIER, DOW CORNING OR GENERAL ELECTRIC RTV SILICONE FOAM, FLAMMADUR E473, NELSON FLAMESEAL OR THOMAS AND BETTS FLAMESAFE. (NOTE: MECHANICAL/WATER HEATER ROOMBUILDING WALL IS RATED)

16120 CONDUCTORS

- .01 ALL CONDUCTORS SHALL BE MINIMUM 98 % CONDUCTIVITY COPPER.
- .02 ALL WIRE AND CABLE SHALL HAVE INSULATION TYPE AS LISTED BELOW.
- .03 ALL BRANCH CIRCUIT AND FEEDER WIRING SHALL BE COLOR CODED THROUGHOUT, AS FOLLOWS:
- PHASE A: BLACK  
PHASE B: RED  
PHASE C: BLUE  
NEUTRAL: WHITE  
GROUND : GREEN

- .04 NO WIRE SMALLER THAN #12 SHALL BE USED EXCEPT FOR CONTROL WIRING.
- .05 BRANCH CIRCUIT RUNS LONGER THAN 100 FEET FROM PANEL TO FIRST OUTLET SHALL BE RUN WITH MINIMUM #10 WIRE.
- .06 ALL INSULATION SHALL BE RATED FOR 900V UNLESS OTHERWISE NOTED.
- .07 PARTICULAR CARE SHALL BE EXERCISED IN THE JOINING OF THE BRANCH CIRCUIT COMMON NEUTRALS.
- .08 CONDUCTOR TYPES:
- A. COMBINATION TYPE "THHN/THWN" OR THW FOR GENERAL USE.
- B. BRANCH CIRCUIT WIRE MAY BE RUN IN THE CHANNELS OF FLUORESCENT FIXTURES.
- C. ALUMINUM CONDUCTORS ARE NOT ALLOWED ON THIS PROJECT.
- .09 CONDUCTOR INSTALLATION SIZES:
- A. SIZES SHOWN ON DRAWINGS ARE MINIMUM AND SHALL NOT BE DECREASED UNDER ANY CIRCUMSTANCES.
- B. CHANGES IN EQUIPMENT FURNISHED BY OTHERS MAY REQUIRE CHANGES IN CONDUCTOR SIZES. IN SUCH CASE, THE CONTRACTOR SHALL NOTIFY THE WAFFLE HOUSE REP..
- C. BRANCH CIRCUITS SHALL BE INSTALLED AS INDICATED ON THE DRAWINGS. CONDUCTOR SIZES SHALL BE AS NOTED IN THE EQUIPMENT SCHEDULES AND/OR PANEL LISTINGS.
- .10 CONDUCTORS INSTALLATION JOINTS:
- A. JOINTS: BRANCH CIRCUIT SPLICES SHALL UTILIZE WIRE NUTS BY "SCOTCH LOCK", OR EQUAL.
- B. SPLICES AND TAPS SHALL BE MADE IN ACCESSIBLE BOXES, PANELBOARDS, FITTINGS, GUTTERS, TERMINAL PANELS, ETC. ONLY MATERIALS SHALL BE USED THAT ARE COMPATIBLE WITH THE CONDUCTORS, INSULATIONS AND PROTECTIVE JACKETS ON THE CABLES AND WIRES.
- C. FOR BRANCH CIRCUIT AND FIXTURE WIRE SPLICES USE T&B SERIES PT-1, OR APPROVED EQUAL TWIST-ON CONNECTOR.
- D. SPLICES AND JOINTS SHALL BE INSULATED WITH MATERIALS APPROVED FOR THE PARTICULAR USE, LOCATION, VOLTAGE, AND TEMPERATURE. INSULATION SHALL BE NOT LESS THAN THAT OF THE CONDUCTORS BEING JOINED.

- .11 CONDUCTORS INSTALLATION-METHODS:
- A. NO CONDUCTORS SHALL BE INSTALLED UNTIL ALL ROUGH WORK BY OTHER TRADES IS IN PLACE AND ROOF DECKS ARE IN PLACE.
- B. AT EACH OUTLET, A LOOP OF WIRE NOT LESS THAN 8 INCHES IN LENGTH SHALL BE LEFT FOR CONNECTION TO FIXTURES AND/OR OTHER DEVICES.
- C. ALL CONDUCTORS SHALL BE CONTAINED IN RACEWAYS.
- D. ALL RACEWAYS SHALL BE THOROUGHLY SWABBED OUT TO REMOVE MOISTURE BEFORE WIRE OR CABLES ARE DRAWN INTO PLACE.
- .12 UNDER SLAB SERVICE: ELECTRICAL CONDUIT PASSING BELOW THE "DINING ROOM" TO THE EXTERIOR SHALL BE SPACED OR PLACED LOW ENOUGH IN THE CONCRETE FLOOR SLAB TO AVOID DAMAGE BY CORE DRILLING OR OTHER METHODS FOR SEATING INSTALLATION. SEE INTERIOR DESIGN DRAWINGS.
- .13 ALL P.V.C. CONDUITS SHALL CONTAIN ALL GREEN EQUIPMENT GROUND WIRE AS PER N.E.C.

16130 OUTLET BOXES AND DEVICES

- .01 ALL WIRING DEVICES SHALL BE FURNISHED IN ACCORDANCE WITH DRAWINGS. SWITCH AND RECEPTACLE PLATES SHALL BE STAINLESS STEEL.
- .02 OUTLET BOXES SHALL BE GALVANIZED STAMPED STEEL, FOUR (4) INCHES SQUARE, 1-1/2 INCHES DEEP, STEEL CITY #52151 FOR GENERAL USE. LARGER BOXES SHALL BE USED WHERE REQUIRED TO PREVENT UNDESIRABLE GROWING OF WIRES, OR AS REQUIRED BY CODE. CONDUIT TYPE GANGABLE BOXES STEEL CITY "G" SHALL BE USED FOR MULTIPLE SWITCH ASSEMBLIES. SIZE AND DEPTH SHALL BE AS REQUIRED BY NATIONAL ELECTRIC CODE AND AS REQUIRED BY THE SPECIFIC DEVICES. BOX COVERS AND PLASTER FINISHING FLUSH WITH SURFACE AREA.
- A. FOR WIRING THAT IS RUN EXPOSED, GROUSE-HINDS FS BOXES WITH DS SERIES COVERS SHALL BE USED WHERE EXPOSED TO WEATHER. IN OTHER LOCATIONS, PROVIDE FOUR (4) INCH BOXES AND FINISH COVERS.
- B. SIZES SHOWN ABOVE ARE MINIMUM ONLY AND SHALL BE INCREASED WHERE NECESSARY DUE TO THE SIZE OF THE DEVICES TO BE CONTAINED.
- C. SYMBOLS ON DRAWINGS INDICATE APPROXIMATE LOCATIONS ONLY UNLESS EXACT LOCATIONS ARE SPECIFIED ON THE PLANS. VERIFY LOCATIONS WITH ARCHITECTURAL DETAILS AND KITCHEN PLANS.
- D. PROPERLY CENTER OUTLETS IN PANELING OR OTHER ARCHITECTURAL FEATURES AS INDICATED ON THE ARCHITECTURAL AND KITCHEN PLANS.
- E. PROVIDE A MINIMUM OF FOUR (4) INCHES CLEARANCE FROM TRIMS AND CORNERS WHEREVER POSSIBLE.
- F. FOR ALL BOXES SO THAT ALL COVERS AND PLATES WILL MOUNT FLUSH WITH THE WALLS AND CEILING FINISHED PANELS.
- G. FURNISH AND INSTALL PLASTER RINGS WHERE REQUIRED, FURNISH SURFACE COVERS FOR EXPOSED WORK.
- H. FIXTURE HANGING SYSTEMS SHALL BE ALL METALLIC.
- I. DURING THE COURSE OF ROUGH CONSTRUCTION, FINISHING AND PLASTERING, CLOSE ALL OUTLETS WITH KRAFT PAPER, EXCELSIOR OR SLIP-ON BLANK METAL PLATES. THE USE OF NEWSPAPER IS NOT PERMISSIBLE FOR THIS PURPOSE.
- J. HEIGHTS OF OUTLETS: UNLESS SPECIFICALLY NOTED OTHERWISE, ALL WALL OUTLETS SHALL BE MOUNTED AT THE FOLLOWING HEIGHTS, MEASURED FROM THE FINISHED FLOOR TO THE CENTER OF THE OUTLET BOX: SWITCHES-48 INCHES; RECEPTACLES-18 INCHES; TELEPHONE OUTLETS-12 INCHES. THE DIMENSIONS GIVEN ABOVE ARE TO BE USED TO COVER THE USUAL INSTALLATION DETAILS OF THE OUTLETS INVOLVED. HOWEVER, THE CONTRACTOR SHALL REFER TO ARCHITECTURAL AND EQUIPMENT DETAILS FOR THE EXACT LOCATION OF ALL OUTLETS BEFORE INSTALLATION OF SAME. MEASUREMENTS ON THE DRAWINGS TAKE PRECEDENCE.
- K. ALL WIRING DEVICES SHALL BE SPECIFICATION GRADE.
- L. PROVIDE GASKETS ON W.P. COVERS AND BLANK PLATES.

16134 PANELBOARDS AND MAIN DISTRIBUTION

- .01 PANEL CABINETS:
- A. CABINETS SHALL BE CONSTRUCTED OF ZINC COATED SHEET STEEL IN ACCORDANCE WITH UL AND NEMA STANDARDS FOR CABINETS, BOXES AND ASSEMBLY.
- B. A DIRECTORY HOLDER WITH PLASTIC COVER SHALL BE FURNISHED ON THE INSIDE OF EACH DOOR. PANEL DIRECTORIES SHALL BE TYPED. HOLDER AND FRAME SHALL BE OF SUITABLE SIZE TO PROPERLY LIST CIRCUIT DESIGNATIONS. PROVIDE FLUSH LOCK IN DOOR. DEAD FRONT PANEL COVERING BUS & CIRCUIT BREAKER ASSEMBLY SHALL BE ONE (1) PIECE.
- C. PANELS SHALL BE INSTALLED AS INDICATED ON THE DRAWINGS. PANELBOARDS ARE OWNER FURNISHED.

- .02 PANEL BOARDS AND CIRCUIT BREAKERS: (OWNER FURNISHED)
- A. INDIVIDUAL CIRCUIT BREAKERS SHALL BE CALIBRATED AT THE FACTORY, SEALED TO PREVENT TAMPERING, AND SHALL BE OF SIZE AND FRAME AS INDICATED ON THE DRAWINGS.
- B. MULTI-POLED BREAKERS SHALL BE OF THE COMMON TRIP TYPE, SIZE AND FRAME AS INDICATED ON THE DRAWINGS.
- D. ACCESSORIES SHALL BE FURNISHED AS INDICATED.
- E. ALL BUSES SHALL BE AS PER MANUFACTURER'S STANDARD.
- F. NEUTRAL BAR SHALL BE MOUNTED OPPOSITE THE MAIN LUGS AND SHALL HAVE NUMBERED TERMINALS FOR CONNECTION.
- G. PROVIDE GROUND BUS AS CALLED FOR ON DRAWINGS.

.03 SAFETY SWITCHES:

- A. SAFETY SWITCHES SHALL BE TYPE HD, FUSIBLE OR NON-FUSIBLE AS INDICATED ON THE DRAWINGS, IN THE SIZES SHOWN. ENCLOSURES SHALL CONFORM TO LOCATION. (NEMA 1 INTERIOR, NEMA 3R EXTERIOR).
- B. ALL SWITCHES SHALL BE FURNISHED WITH THE NECESSARY NUMBER OF POLES.
- C. SWITCHES SHALL BE INSTALLED WHERE REQUIRED WHETHER SPECIFICALLY CALLED FOR OR INFERRED BY LOCATION.
- D. WEATHERPROOF SAFETY SWITCHES MAY BE NEMA 3R EXTERIOR.
- E. ACCEPTABLE MANUFACTURERS ARE: SQUARE "D", G.E., WESTINGHOUSE, AND CUTLER-HAMMER.
- F. SAFETY SWITCHES ARE OWNER FURNISHED.

.04 MARKING AND IDENTIFICATION:

- A. ALL SWITCHES, PANELBOARDS, CONTROLLERS, CONTROL PANELS, TIME SWITCHES, CONTACTORS, TELEPHONE AND COMMUNICATION CABINETS SHALL BE CLEARLY AND PERMANENTLY LABELED IN A NEAT, ORDERLY AND SYSTEMATIC MANNER.
- B. IDENTIFICATION SHALL CLEARLY DESIGNATE DEVICES AND EQUIPMENT AS TO USAGE.
- C. PANELBOARDS AND CABINETS SHALL BE MARKED WITH OWNER FURNISHED TAGS IN THE SAME DESIGNATION AS ON THE DRAWINGS USING WHITE LETTERS ON BLACK PLATES, SCREWED TO DOORS OR COVERS.
- D. CONDUCTORS IN MULTIPLE CONDUCTOR RACEWAYS, GUTTERS, JUNCTION OR PULL BOXES, CABINETS AND SIMILAR LOCATIONS SHALL BE CLEARLY AND PERMANENTLY IDENTIFIED AS TO ELECTRICAL CHARACTERISTICS, SYSTEM DESIGNATION, SOURCE AND DESTINATION.
- E. CONDUCTORS SHALL BE MARKED WITH PREPRINTED ADHESIVE MARKERS AS MANUFACTURED BY W.H. BRADY CO., OR THOMAS & BETTS.

16150 MOTORS AND CONTROLS

- .01 WIRE TO AND CONNECT ALL ELECTRICALLY OPERATED EQUIPMENT.
- .02 VERIFY PROPER ROTATION OF ALL ROTATING EQUIPMENT.

16190 SUPPORTING DEVICES

- .01 REFER TO 16110.07 FOR EXPOSED RACEWAYS. CONCEALED RACEWAYS SHALL BE SUPPORTED USING SAME METHODS AS REQUIRED FOR EXPOSED RACEWAYS, EXCEPT THAT BRANCH CIRCUIT EMT IN CONCEALED LOCATIONS MAY BE SUPPORTED FROM BUILDING STRUCTURAL ELEMENTS WITH CADDY TYPE FITTINGS MANUFACTURED BY ERICO PRODUCTS CO., INC.
- .02 OUTLET BOXES SHALL BE SUPPORTED TO BUILDING STRUCTURE USING THREADED LEAD ANCHORS AND MACHINE BOLTS. TOGGLE BOLTS, WOOD OR SHEET METAL SCREWS, IF PLACED DIRECTLY ON WOOD OR METAL SURFACE. TWO (2) ANCHORS ARE REQUIRED FOR EACH BOX. WHEN BOXES ARE LOCATED BETWEEN STRUCTURAL SUPPORTS, PROVIDE CADDY BOX SUPPORTS.
- .03 ALL SUPPORTS, ANCHORS, BOLTS AND HARDWARE SHALL BE SIZED IN ACCORDANCE WITH MANUFACTURER'S PUBLISHED INFORMATION FOR THE SIZE AND WEIGHT OF THE SUPPORTED OBJECTS.

16450 GROUNDING

- .01 REFER TO ELECTRICAL DRAWINGS AND DIAGRAMS FOR GROUNDING CONNECTIONS.
- .02 THE CONDUIT SYSTEM AND THE NEUTRAL CONDUCTORS SHALL BE GROUNDED. FOLLOW REQUIREMENTS OF THE NATIONAL ELECTRICAL CODE - LATEST EDITION. NEUTRALS OF ALL TRANSFORMER SECONDARIES SHALL BE GROUNDED TO MINIMUM ONE (1) INCH COLD WATER PIPE.
- .03 THE GROUND CONNECTION OF THE CONDUIT SYSTEM AND THE NEUTRAL CONDUCTORS SHALL BE MADE AT THE MAIN SERVICE PANELBOARD GROUND BUS.
- .04 WHERE THREE (3) PHASE THREE (3) WIRE FEEDERS ARE EXTENDED TO UTILIZATION EQUIPMENT AND APPARATUS, A BONDING CONDUCTOR OF ADEQUATE SIZE, GREEN COLOR, SHALL BE USED TO GROUND THE EQUIPMENT FRAME. THE CONDUCTOR SHALL BE INSTALLED FROM GROUND BUS TO EQUIPMENT FRAME IN THE CIRCUIT RACEWAY.
- .05 FLEXIBLE CONDUIT SHALL BE PROVIDED WITH A GREEN COLORED INSULATED BONDING CONDUCTOR OF ADEQUATE SIZE.
- .06 IN ADDITION TO THE WATER SERVICE, PROVIDE A SUPPLEMENTARY GROUNDING ELECTRODE AS INDICATED ON SHEET E-3.
- .07 SEE GENERAL NOTES ON DRAWINGS.
- .08 ALL PVC CONDUITS SHALL CONTAIN A GREEN INSULATED EQUIPMENT GROUNDING CONDUCTOR SIZED IN ACCORDANCE WITH NEC.

16480 FEEDER CIRCUITS

- .01 PROVIDE FEEDERS AS INDICATED ON THE DRAWINGS AND IN SCHEDULES.

16485 BRANCH CIRCUITS

- .01 PROVIDE ALL WIRING AND CONNECTIONS TO OUTLETS AND FIXTURES AS INDICATED ON DRAWINGS AND IN SCHEDULES.

16500 LIGHTING - INTERIOR

- .01 INSTALL ALL LIGHTING FIXTURES AS NOTED ON THE LIGHTING FIXTURE SCHEDULE, ON THE SITE PLAN, AND ON THE EXTERIOR AND INTERIOR ELECTRICAL DESIGN DRAWINGS.
- .02 EACH FIXTURE IS OWNER FURNISHED, UNLESS NOTED OTHERWISE, AND WILL BE EQUIPPED WITH ANY REQUIRED MOUNTING HARDWARE AND ACCESSORY INSTALLATION ITEMS. FIXTURE MOUNTING FRAMES SHALL BE COMPATIBLE WITH CEILING CONSTRUCTION.
- .03 EACH FIXTURE SHALL BE LAMPED WITH OWNER FURNISHED LAMPS OF TYPE AND WATTAGE INDICATED ON THE SCHEDULE.

16510 INTERIOR LIGHTING FIXTURES

- .01 INSTALL AS INDICATED ON LIGHTING AND REFLECTED CEILING PLANS, DIMENSIONAL REFERENCE POINTS AND ARCHITECTURAL DETAILS AND ELEVATIONS.
- .02 ALL INTERIOR FIXTURES (WHERE APPLICABLE) SHALL HAVE 100 % VIRGIN ACRYLIC PRISMATIC DIFFUSERS. POLYSTYRENE OR VINYL WILL NOT BE ACCEPTABLE.
- .03 SEE LIGHTING FIXTURE SCHEDULE AND NOTES ON ELECTRICAL DRAWINGS.

16600 SPECIAL SYSTEMS

- .01 PROVIDE POWER WIRING AND OUTLETS FOR COMPUTER SYSTEM AS INDICATED ON THE DRAWINGS. COMPUTER CABLE INSTALLATION SHALL BE AS BY WAFFLE HOUSE.
- .02 CHANNEL CUT LETTERS, IF USED, SHALL BE WIRED WITH A MINIMUM OF ONE DEDICATED NEUTRAL CONDUCTOR AND DEDICATED GROUNDING CONDUCTOR PER CIRCUIT SUPPLYING EACH BLOCK OF LETTERS.

16700 SOUND SYSTEMS

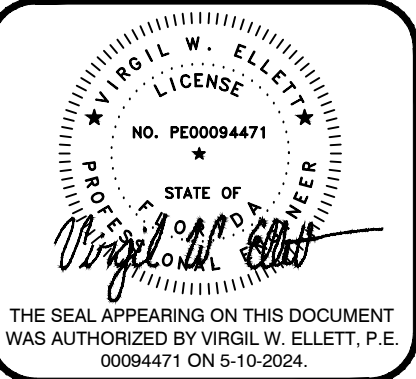
- .01 RACEWAYS AND OUTLET BOXES SHALL BE AS CALLED FOR ON DRAWINGS.
- .02 PROVIDE NYLON PULL CORD IN ALL EMPTY RACEWAYS AND IDENTIFY PULL CORD ENDS AS NOTED.
- .03 TELEPHONE SERVICE WIRING BY LOCAL TELEPHONE UTILITY.
- .04 PROVIDE BASIC MATERIALS CALLED FOR IN SECTION 16100.

16740 TELEPHONE

- .01 WIRING TO TELEPHONE OUTLETS INSIDE BUILDING SHALL BE BY THIS DIVISION CONTRACTOR.

16900 CONTROLS AND INSTRUMENTATION

- .01 CONTROL WIRING DIAGRAMS ARE INDICATED ON DRAWINGS AND FURNISHED WITH EQUIPMENT. CONTRACTOR SHALL COORDINATE ALL WIRING WITH THESE DRAWINGS AND MANUFACTURER AS NOTED ON PLANS.
- .02 ANY DISCREPANCY BETWEEN SYSTEM ELECTRICAL CHARACTERISTICS AND EQUIPMENT REQUIREMENTS SHALL BE BROUGHT TO THE ATTENTION OF THE WAFFLE HOUSE REPRESENTATIVE FOR DECISION.



Point One Design, Ltd.  
Consulting Engineers

9941 York Thelma Drive North  
440-250-1800 Fax 440-250-1831  
one@pointonedesign.com

These drawings and the design represented herein are the exclusive property of Wafile House Inc. Reproduction or any use of these drawings other than for the project intended without the express written consent of Wafile House Inc. is prohibited. Any unauthorized use will be subject to legal action.

C24297

BY

REVISIONS

DATE

#

"A UNIQUE AMERICAN PHENOMENON"  
**WAFFLE**  
**HOUSES**

"AMERICA'S PLACE TO EAT, AMERICA'S PLACE TO WORK"  
5988 Franchised Drive, Norcross, GA 30071  
(770) 725-5700

ELECTRICAL SPECIFICATIONS

30 SEAT / 15 STATION / REMODEL 45YR

LOCATION: UNIT 388  
2963 WEST US HWY 90  
LAKE CITY, FLORIDA 32055

CHECKED BY:

VWE

DRAWN BY:

LWC

ELECTRICAL

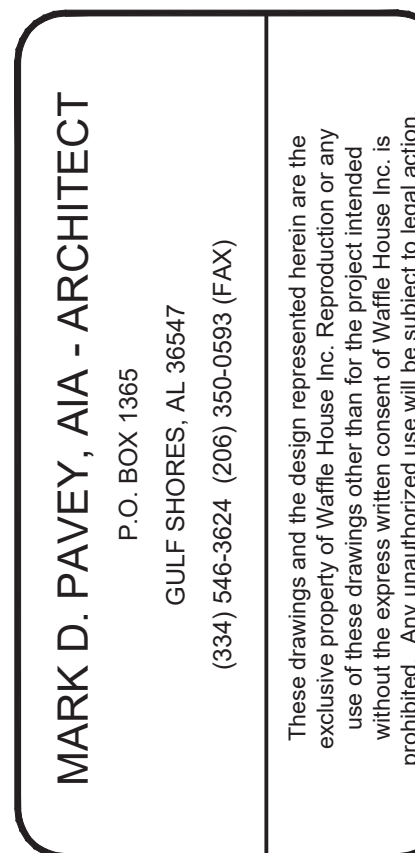
JOB NO:  
73366

DATE:  
03/20/2024

SHEET  
E-4  
OF  
SHEETS

REMODEL 45YR



[illegible]

**'A UNIQUE AMERICAN PHENOMENON'**

**W A F F L E**

**H O U S E<sup>®</sup>**

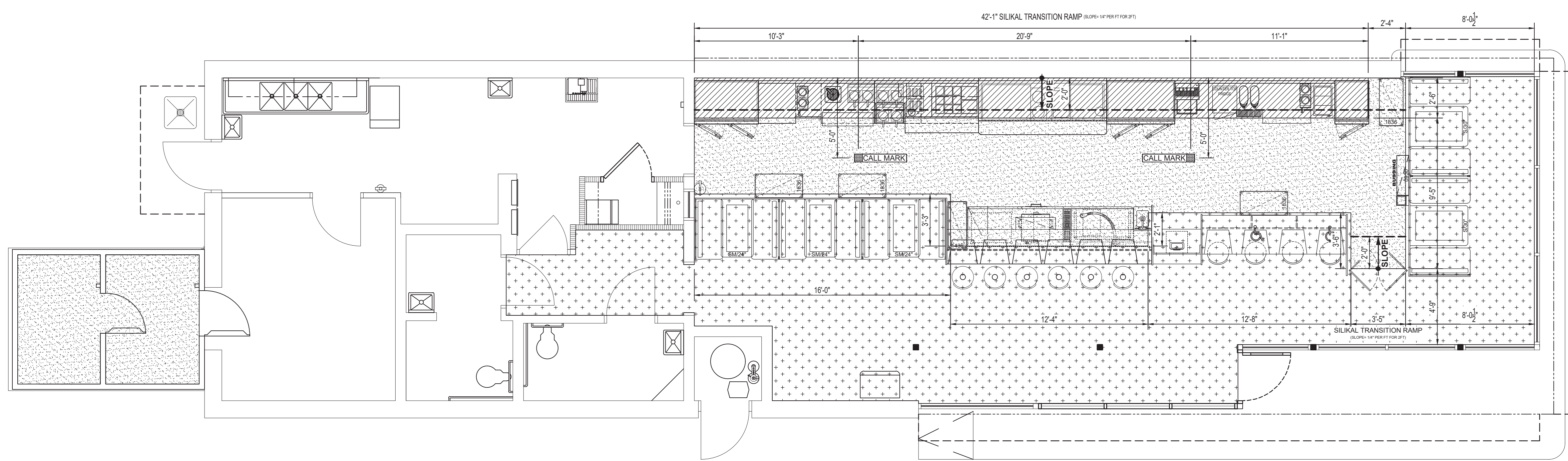
**'AMERICA'S PLACE TO EAT, AMERICA'S PLACE TO WORK'**

5986 Financial Drive, Norcross, GA 30071  
(770) 728-5700

AISLE OF TILE FLOOR, AND SLAB PLUMBING ROUGH-IN PLANS	30 SEAT / 15 STATION / REMODEL 45YR
	LOCATION: UNIT 388 2963 W. U.S. HIGHWAY 90 LAKE CITY, FLORIDA 32055
	CHECKED BY: MDP/ EJ DRAWN BY: MM



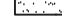
WAFFLE HOUSE MOD	
JOB NO: 73366	SHEET <b>K-1</b>
DATE: 03/20/2024	OF SHEETS

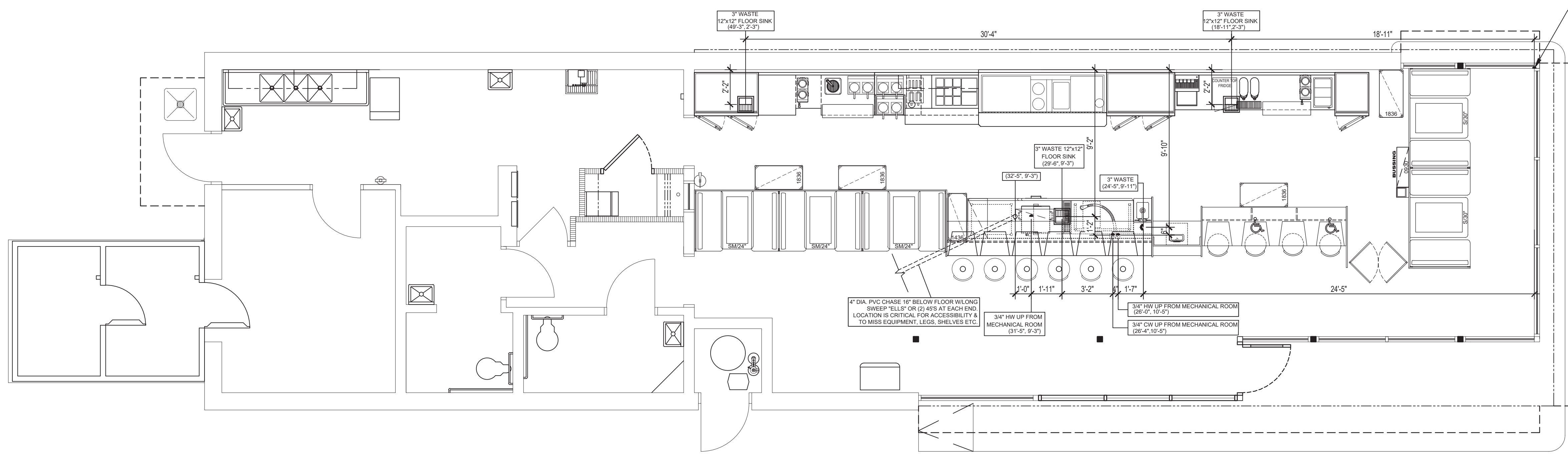
REMODEL 45YR



# 1 AISLE OF TILE FLOOR PLAN

K-1 Scale: 1/4"=1'-0"

- LEGEND**
- 
-  SILIKAL ROUGH: 377 SQ. FT.
-  SILIKAL SMOOTH: 105 SQ. FT.
-  QUARRY STRATA 54: 636 SQ. FT.



2  
K-1

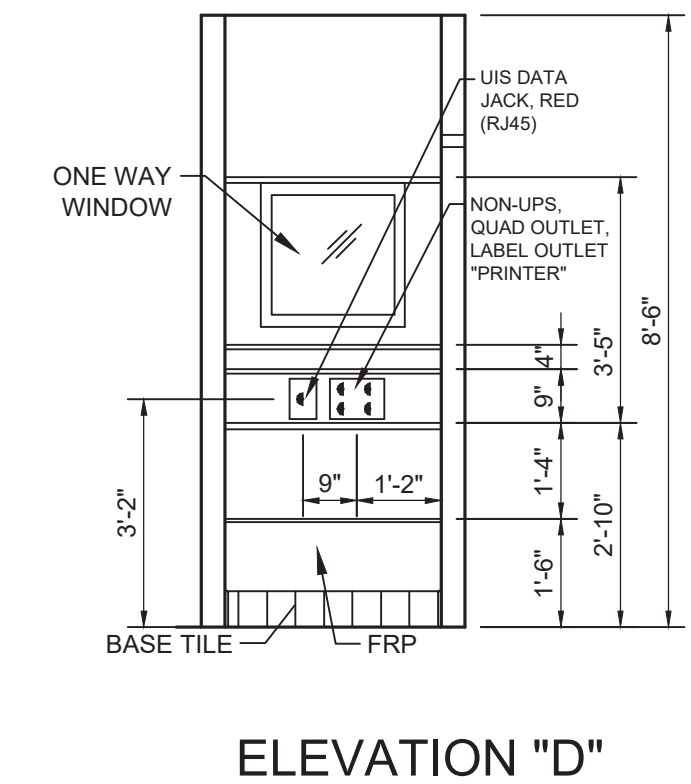
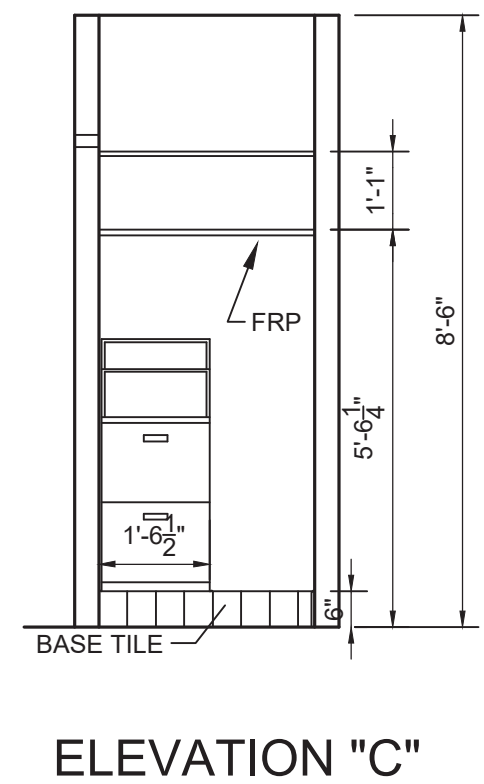
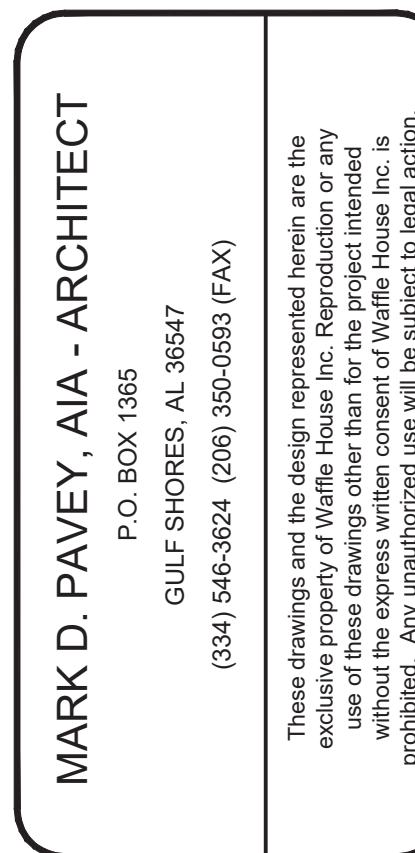
# SLAB PLUMBING ROUGH-IN PLAN

Scale: 1/4"=1'-0"

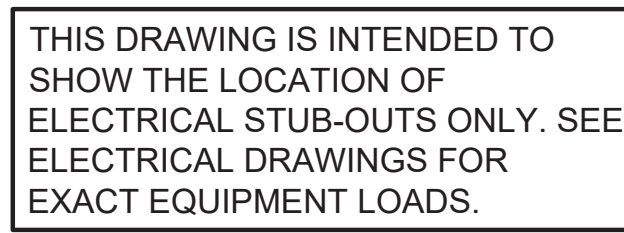
THIS DRAWING IS INTENDED TO  
SHOW THE LOCATION OF  
PLUMBING STUB-OUTS ONLY. SEE  
PLUMBING DRAWINGS FOR EXACT  
STUB-OUT SIZE.

**DATUM POINT**  
**DIMENSIONS:**  
DIMENSIONS SHOWN ARE  
TO CENTERLINE OF STUB-UP  
MEASURED FROM 0'-0", 0'-0"





## 2 MANAGER'S CLOSET ELEVATIONS



1 ELECTRICAL CONNECTION PLAN  
K.C. Scale: 1/4"=1'-0"

**"A UNIQUE AMERICAN PHENOMENON"**

**W A F F L E  
H O U S E<sup>®</sup>**

**"AMERICA'S PLACE TO EAT, AMERICA'S PLACE TO WORK"**

5986 Financial Drive, Norcross, GA 30071  
(770) 728-5700

ELEC. CONNECTION PLAN, MGRS, CLOSET ELEVATIONS, AND EQUIPMENT DETAILS	30 SEAT / 15 STATION / REMODEL 45YR
	LOCATION: UNIT 388 2963 W. U.S. HIGHWAY 90 LAKE CITY, FLORIDA 32055
CHECKED BY:	MDP/ EJ
DRAWN BY:	MM

WAFFLE HOUSE MOD	
JOB NO: 73366	SHEET <b>K-2</b>
DATE: 03/20/2024	OF SHEETS

REMODEL 45YR