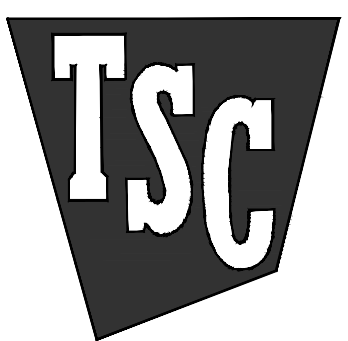


Design and construction documents are instruments of services are given in confidence and remain the property of Onyx Creative. The use of this design and these construction documents for purposes other than the specific project named herein is strictly prohibited without expressed written consent of Onyx Creative.



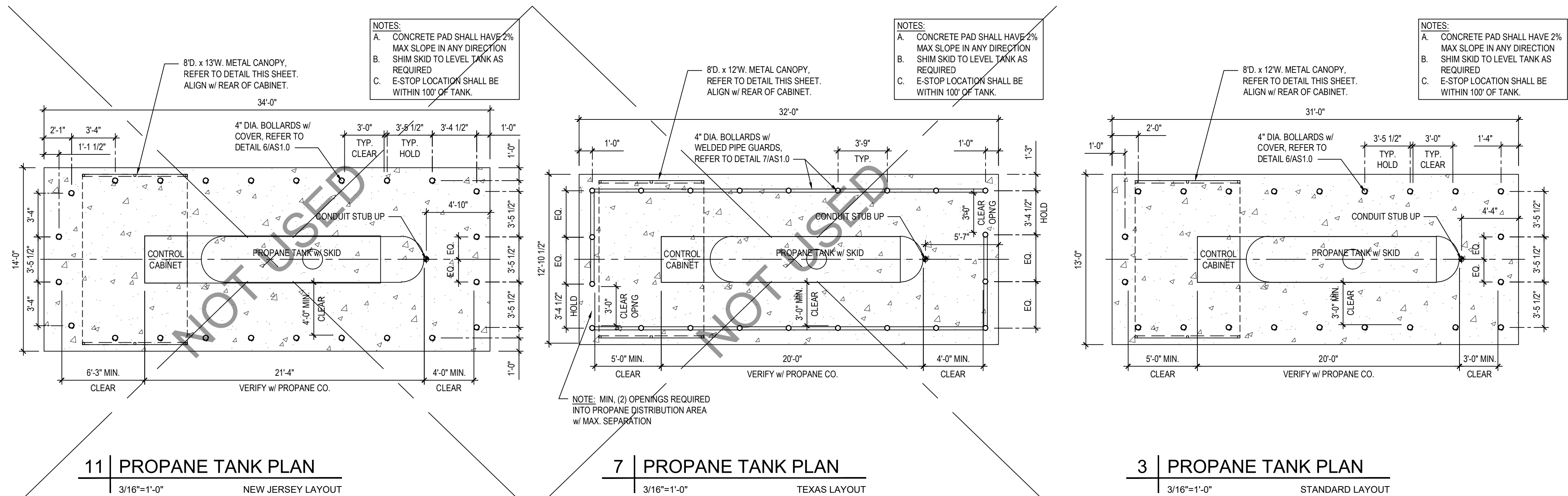
SCHEDULE I 4-24-2025  
SCHEDULE II -

Project No.: 24.0808  
Drawn By: CFM  
Date: 4-24-2025 Issue: Bid & Permit

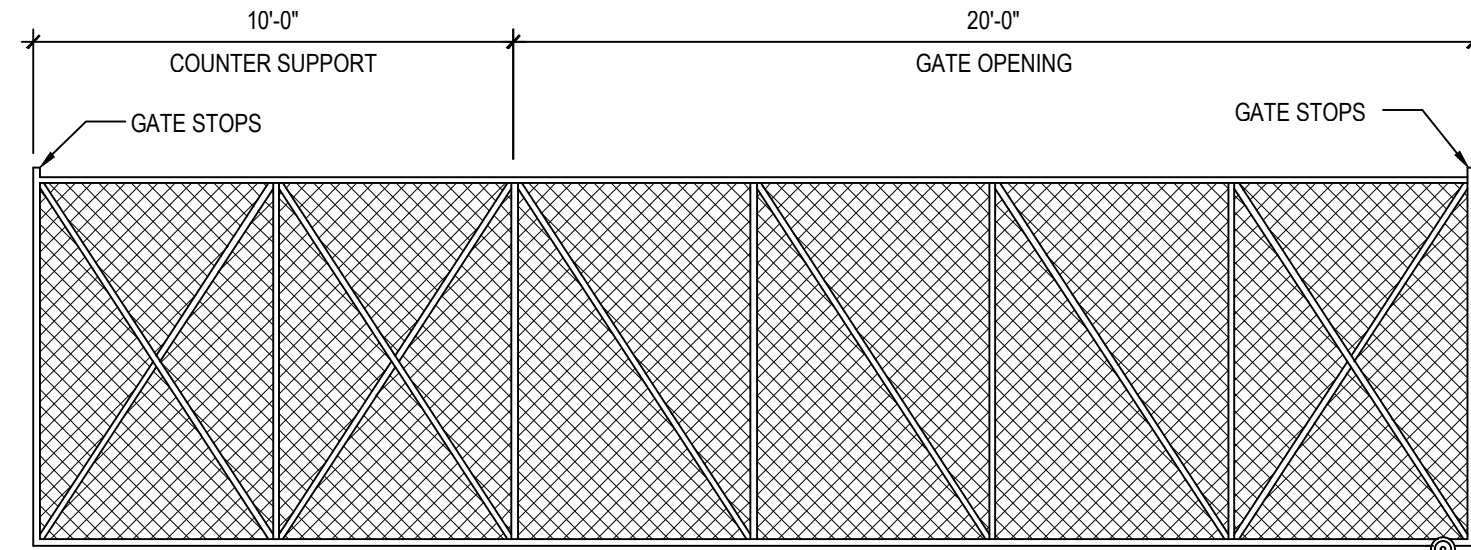
## PROPANE TANK RESPONSIBILITY NOTES

- PROPANE TANK DELIVERED PRIOR TO FIXTURE DATE:
- GENERAL CONTRACTOR IS RESPONSIBLE FOR INFRASTRUCTURE RELATED TO PROPANE TANK INSTALLATION.
  - GENERAL CONTRACTOR IS RESPONSIBLE FOR ELECTRICAL PERMITTING AND FINAL CONNECTION TO PUMP DISPENSING CONTROL PANEL.
  - PROPANE PROVIDER IS RESPONSIBLE FOR GAS PERMITTING OF THE TANK.
  - PROPANE PROVIDER IS RESPONSIBLE FOR INSTALLATION AND FINAL GAS CONNECTION OF THE TANK.
  - REFER TO ELECTRICAL DRAWINGS FOR ADDITIONAL INFORMATION.

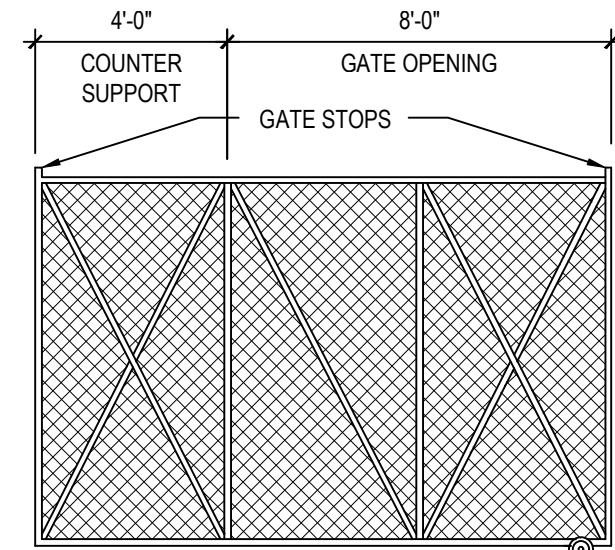
- PROPANE TANK IS DELIVERED AFTER FIXTURE DATE:
- GENERAL CONTRACTOR IS RESPONSIBLE FOR INFRASTRUCTURE RELATED TO PROPANE TANK INSTALLATION.
  - PROPANE PROVIDER IS RESPONSIBLE FOR ELECTRICAL PERMITTING AND FINAL CONNECTION TO PUMP DISPENSING CONTROL PANEL.
  - PROPANE PROVIDER IS RESPONSIBLE FOR GAS PERMITTING OF THE TANK.
  - PROPANE PROVIDER IS RESPONSIBLE FOR INSTALLATION AND FINAL GAS CONNECTION OF THE TANK.
  - REFER TO ELECTRICAL DRAWINGS FOR ADDITIONAL INFORMATION.



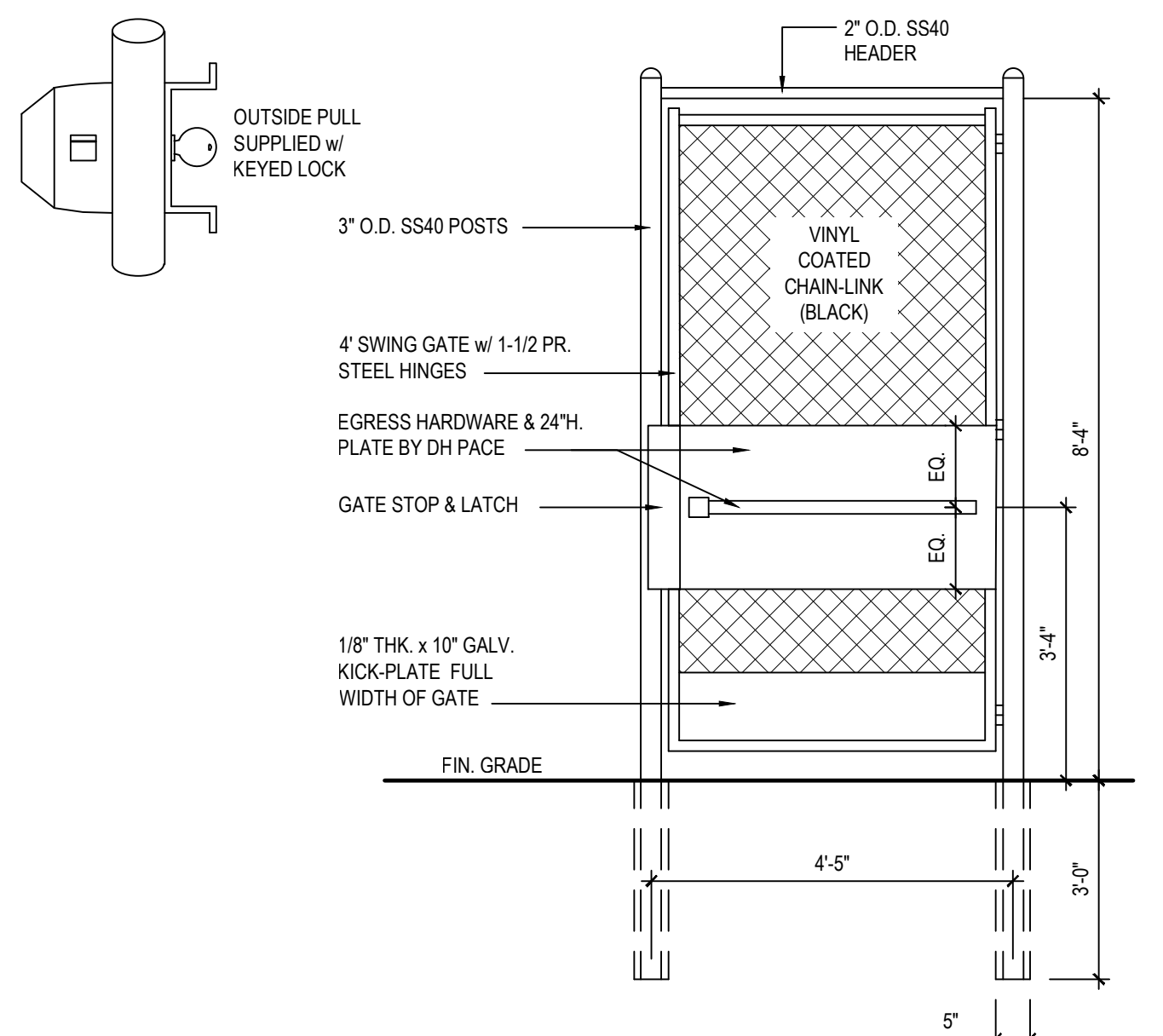
- CANTILEVERED GATE NOTES:**
- PROVIDE & INSTALL SAME HARDWARE FOR ALL CANTILEVERED GATES.
  - INSTALL AUTOMATIC GATE OPERATOR ON EXIT GATE ONLY.
  - THE GAP BETWEEN THE BOTTOM RAIL OF THE CANTILEVERED GATE AND FINISH GRADE SHALL BE NO GREATER AT ANY POINT WITHIN THE GATE OPENING THAN THE DEPTH OF THE CASTERS.



DRIVE THRU GATES

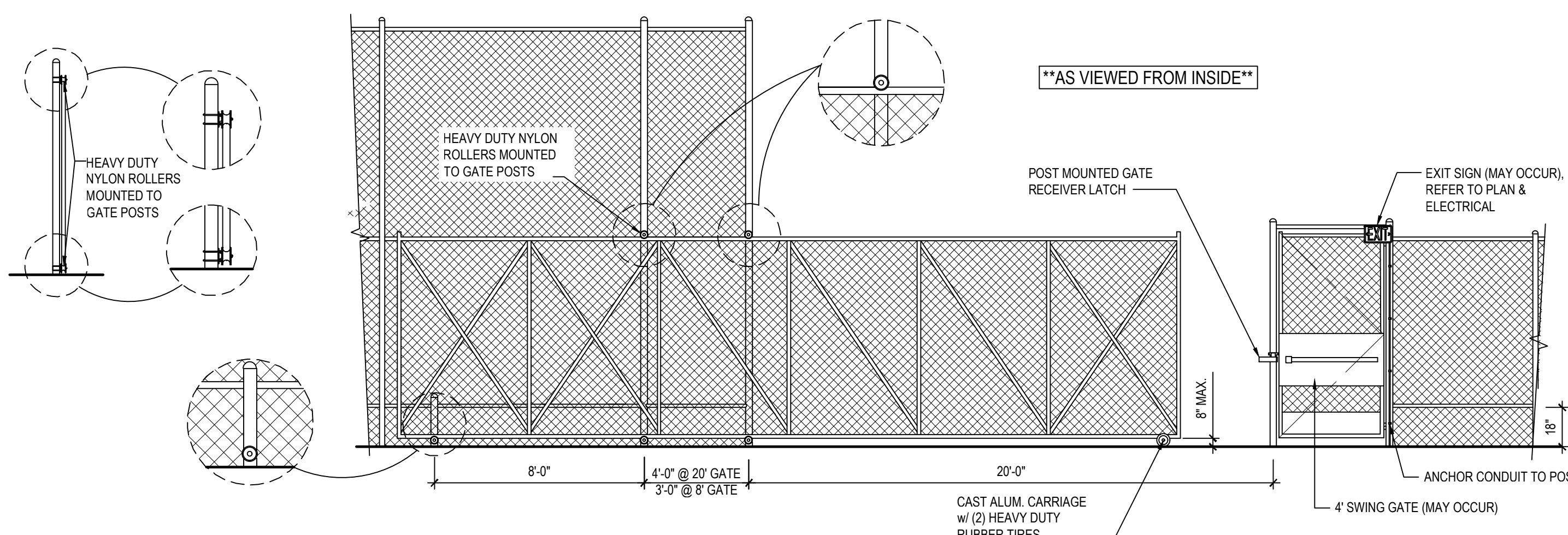


LIVE GOODS CENTER GATE



2 EGRESS MAN-GATE DETAIL

1/2"=1'-0"



18 ROLLING CANTILEVERED GATE DETAILS

1/4"=1'-0"

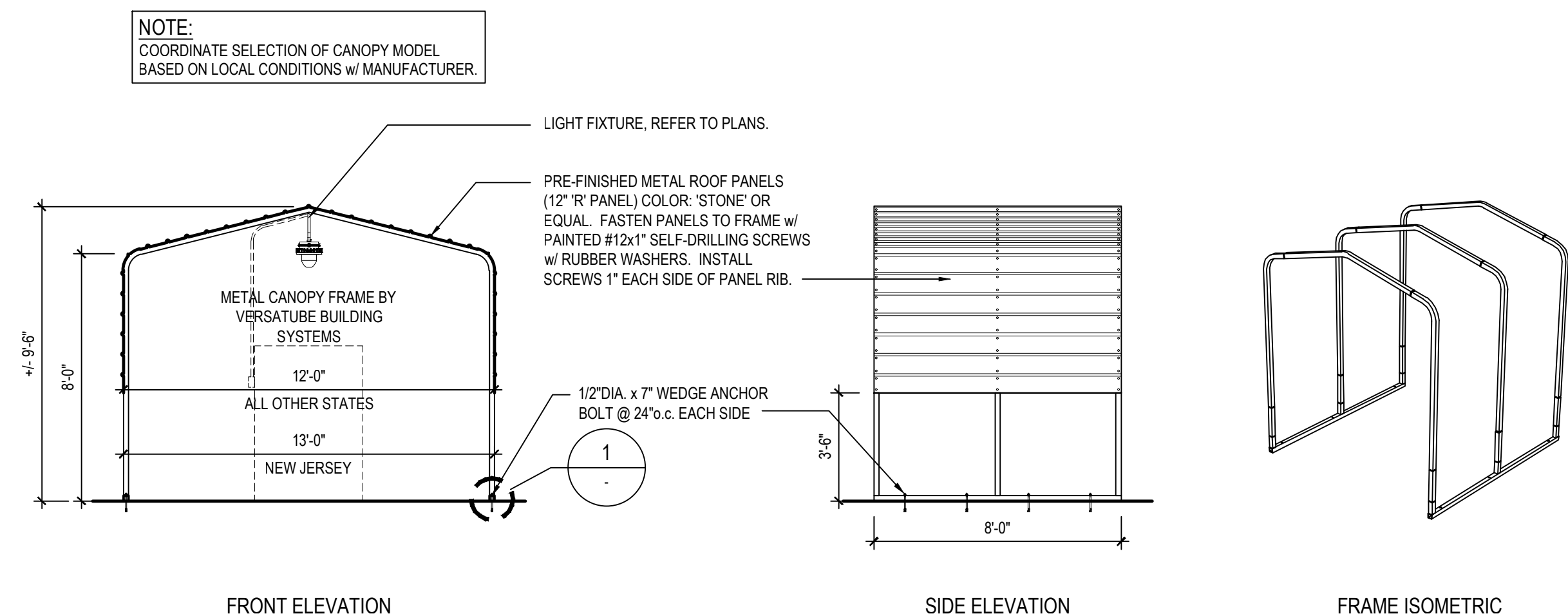
## CHAIN-LINK FENCE/GATE SPECIFICATIONS (REFER TO ELEVATIONS)

### 8' HIGH

- FABRIC: 96" H. x 9 GA. GALVANIZED (2" MESH) CHAIN LINK FABRIC.
- TOP & BOTTOM RAIL: 1-5/8" O.D. FULL WEIGHT PIPE, 2.27 LBS. PER FOOT (MIN). TOP RAIL TO BE JOINED w/ 1-5/8" SLEEVE WHERE APPLICABLE. BOTTOM RAIL @ 18" ABOVE GRADE. INTERMEDIATE HORIZONTAL RAILS SHALL BE INSTALLED @ 48" O.C. MAX.
- LINE POST: 2-1/2" O.D. FULL WEIGHT PIPE, 3.65 LBS. PER FOOT (MIN) @ 10'-0" O.C. MAX. SPACING w/ 8" DIA. x 30" DEEP CONCRETE FOOTING.
- TERMINAL POST: 3" O.D. FULL WEIGHT PIPE, 5.79 LBS. PER FOOT (MIN) w/ 8" DIA. 36" DEEP CONCRETE FOOTING.
- GATE POST: 4" O.D. FULL WEIGHT PIPE, 9.10 LBS. PER FOOT (MIN) w/ 8" DIA. x 36" DEEP CONCRETE FOOTING.
- GATES:
  - 12'-0" W. x 7'-0" H. (8'-0" OPENING) MANUAL CANTILEVERED CHAIN LINK GATE
  - 11'-0" W. x 7'-0" H. (20'-0" OPENING) MANUAL CANTILEVERED CHAIN LINK GATE
  - 11'-0" W. x 7'-0" H. (20'-0" OPENING) CANTILEVERED CHAIN LINK GATE w/ AUTOMATIC GATE OPERATOR #SL585 BY LIFTMASTER. PROVIDE POST MOUNTED OVERRIDE KEYPAD & (2) PROGRAMMED REMOTE CONTROLS.
  - 11'-0" W. x 8'-0" H. MANUAL SWING GATE w/ 1-5/8" O.D. FULL WEIGHT PIPE FRAMEWORK, 2.27 LBS. PER FOOT (MIN). FABRICATED PER THE MANUFACTURERS DESIGN STANDARDS.
  - GATES SHALL BE BRACED/TRUSSED AS NECESSARY w/ FABRIC TO MATCH FENCE AND HAVE SAME FABRIC AS FENCE.
- TENSION WIRE: 7 GA. COIL SPRING GALVANIZED TENSION WIRE ATTACHED TO BOTTOM OF FENCE FABRIC w/ 9 GA. ALUM. HOG RING SPACED 24" O.C. MAX.
- FITTINGS: HEAVY BRACED BANDS & CARRIAGE BOLTS, PRESSED STEEL RAIL-ENDS, PRESSED STEEL LOOP CAPS, PRESSED STEEL CAPS, 1/4" x 3/4" TENSION BARS, HEAVY TENSION BANDS & CARRIAGE BOLTS.
- TIW WIRE: 8-1/4" x 12 GA. STEEL TIE WIRE & 6-1/2" x 12 GA. STEEL WIRE SPACED 15" O.C. FOR LINE POST & 24" O.C. FOR RAILS.
- POST FOOTING: TRUCK POURED CONCRETE.
- GATE RECEIVER LATCH: POST MOUNTED GATE RECEIVER LATCH WITH THE ABILITY TO ACCEPT A STANDARD PAD LOCK.
- VINYL COATED FABRIC & POSTS. COLOR: BLACK.
- HIGH-DENSITY POLYETHYLENE (HDPE) STRIPS, SIZED TO FIT FABRIC WEAVE. COLOR: BLACK, (WHERE REQUIRED).

### 16' HIGH (FOR WIND SPEEDS UP TO 130 MPH):

- FABRIC: 192" H. x 9 GA. GALVANIZED (2" MESH) CHAIN LINK FABRIC.
- TOP & BOTTOM RAIL: 1-5/8" O.D. FULL WEIGHT PIPE, 2.27 LBS. PER FOOT (MIN). TOP RAIL TO BE JOINED w/ 1-5/8" SLEEVE WHERE APPLICABLE. BOTTOM RAIL @ 18" ABOVE GRADE. INTERMEDIATE HORIZONTAL RAILS SHALL BE INSTALLED @ 48" O.C. MAX.
- LINE, GATE, & TERMINAL POSTS: 4" O.D. x 1/4" WALL THICKNESS (MIN) w/ 8" DIA. x 60" DEEP CONCRETE FOOTING. LINE POST SPACING @ 10'-0" O.C. MAX.
- TENSION WIRE: 7 GA. COIL SPRING GALVANIZED TENSION WIRE ATTACHED TO BOTTOM OF FENCE FABRIC w/ 9 GA. ALUM. HOG RING @ 24" O.C.
- FITTINGS: HEAVY BRACED BANDS & CARRIAGE BOLTS, PRESSED STEEL RAIL-ENDS, PRESSED STEEL LOOP CAPS, PRESSED STEEL CAPS, 1/4" x 3/4" TENSION BARS, HEAVY TENSION BANDS & CARRIAGE BOLTS.
- TIW WIRE: 8-1/4" x 12 GA. STEEL TIE WIRE AND 6-1/2" x 12 GA. STEEL WIRE @ 15" O.C. FOR LINE POSTS & 24" O.C. FOR RAILS.
- POST FOOTING: TRUCK POURED CONCRETE.
- VINYL COATED FABRIC & POSTS. COLOR: BLACK.
- HIGH-DENSITY POLYETHYLENE (HDPE) STRIPS, SIZED TO FIT FABRIC WEAVE. COLOR: BLACK, (WHERE REQUIRED).



9 PROPANE CANOPY DETAILS

1/4"=1'-0"

1 PROPANE CANOPY ANCHOR DETAIL

3"=1'-0"