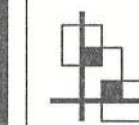


# PETERSEN RESIDENCE

(ADDITION TO EXISTING STRUCTURE)

350 SW MEADOW TERRACE

LAKE CITY, FLORIDA



THE FINAL PLAN, INC.

WWW.THEFINALPLAN.COM

TEL: 352.410.2539

CUSTOM DESIGNS, SPACE PLANNING  
TENANT BUILD OUTS, ADDITIONS, REMODELS

revisions	by

PETERSEN ADDITION  
350 SW MEADOW TERRACE  
LAKE CITY, FLORIDA

CODE DATA - 2020 FLORIDA BUILDING CODE - RESIDENTIAL											
THIS STRUCTURE HAS BEEN DESIGNED TO MEET OR EXCEED THE REQUIREMENTS OF SECTION R301 OF THE 2020 FLORIDA BUILDING CODE											
ULTIMATE WIND SPEED (3 SEC. GUST)		120 MPH									
NOMINAL WIND SPEED		93 MPH									
RISK CATEGORY		II									
WIND EXPOSURE		B									
INTERNAL PRESSURE COEFFICIENT		+0.8, -0.8									
HEIGHT AND EXPOSURE ADJUSTMENT COEFFICIENTS FOR MEAN ROOF HEIGHT OF 30', EXPOSURE B (SEE R301(2)(3) FOR OTHER EXPOSURES AND MEAN ROOF HEIGHTS)											
	AREA OF OPENINGS (SQ. FT.)	HGHT. & EXPOSURE ADJUSTMENT COEFF.	DESIGN (PSF)								
INTERIOR ZONE	0 TO 10.00	1.0	5.5, -16.3								
	10.01 TO 20.00	1.0	14.8, -16.1								
	20.01 TO 50.00	1.0	13.9, -15.2								
	50.01 TO 100.00	1.0	13.2, -14.5								
	100.01 TO 500	1.0	11.6, -12.9								
EXTERIOR ZONE WITH 4% CORNER	0 TO 10.00	1.0	15.5, -20.8								
	10.01 TO 20.00	1.0	14.8, -19.4								
	20.01 TO 50.00	1.0	13.9, -17.6								
	50.01 TO 100.00	1.0	13.2, -16.1								
	100.01 TO 500	1.0	11.6, -12.9								
GENERAL NOTES:											
1. TABLE VALUES SHALL BE ADJUSTED FOR HEIGHT AND EXPOSURE BY MULTIPLYING BY THE ADJUSTMENT COEFFICIENT.											
2. PLUS AND MINUS SIGNS SIGNIFY PRESSURES ACTING TOWARD											
AND AWAY FROM THE BUILDING SURFACES.											
2020 - FLORIDA BUILDING CODE WIND SPEED CONVERSIONS (R301(2)(3))											
ULTIMATE (3 SEC. GUST)	110	115	120	130	140	150	160	170	180	190	200
NOMINAL	85	89	93	101	108	116	124	132	139	147	155

## AREA TABULATION

Living:	
*Existing	1250 sf
Addition	210 sf
*Total Area:	1460 sf
*BRICK & AIR GAP NOT INCLUDED IN SQUARE FOOTAGE CALCULATIONS. IF INCLUDED, THEN EXISTING TOTAL = 1288 SF. DETACHED GARAGE ALSO NOT INCLUDED IN CALCULATIONS.	

## INDEX OF DRAWINGS

SHEET NO.	DRAWING TITLE
C1	COVER SHEET
A1	EXISTING & PROPOSED FLOOR PLAN
A2	ELEVATIONS & ELECTRICAL
	FIXTURE LAYOUT
S1	FOUNDATION PLAN & TRUSS DETAIL
S2	ROOF PLAN & DETAILS



job no	PETERSEN
drawn by	DA
checked	DA
date	07/18/22
scale	AS NOTED
drawing no.	

C1



[illegible]



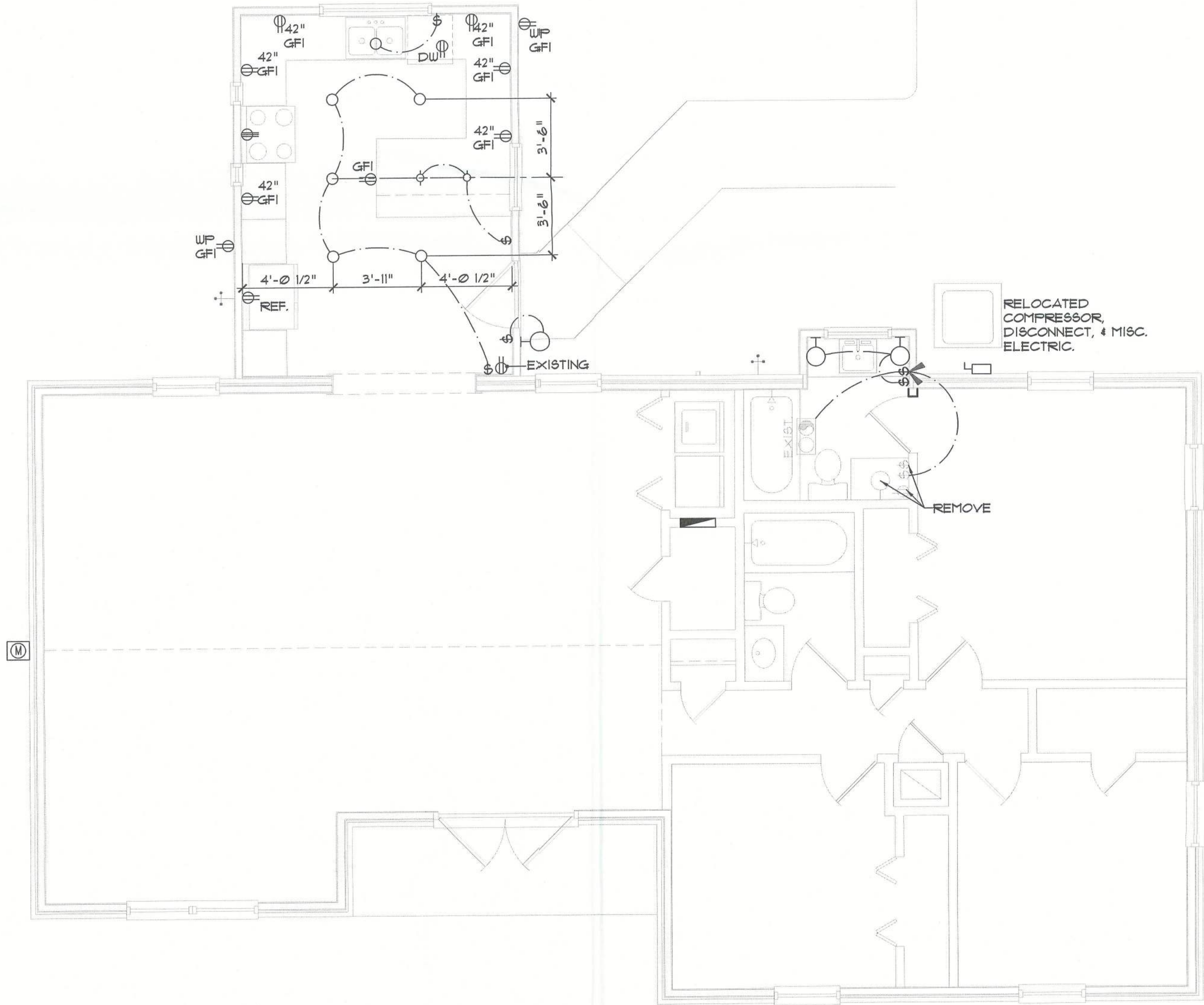
The Final Plan Inc. reserves its common law copyrights. These plans and designs are not to be reproduced for a purpose other than the completion of this project without written consent from The Final Plan, Inc.

ELECTRICAL LEGEND

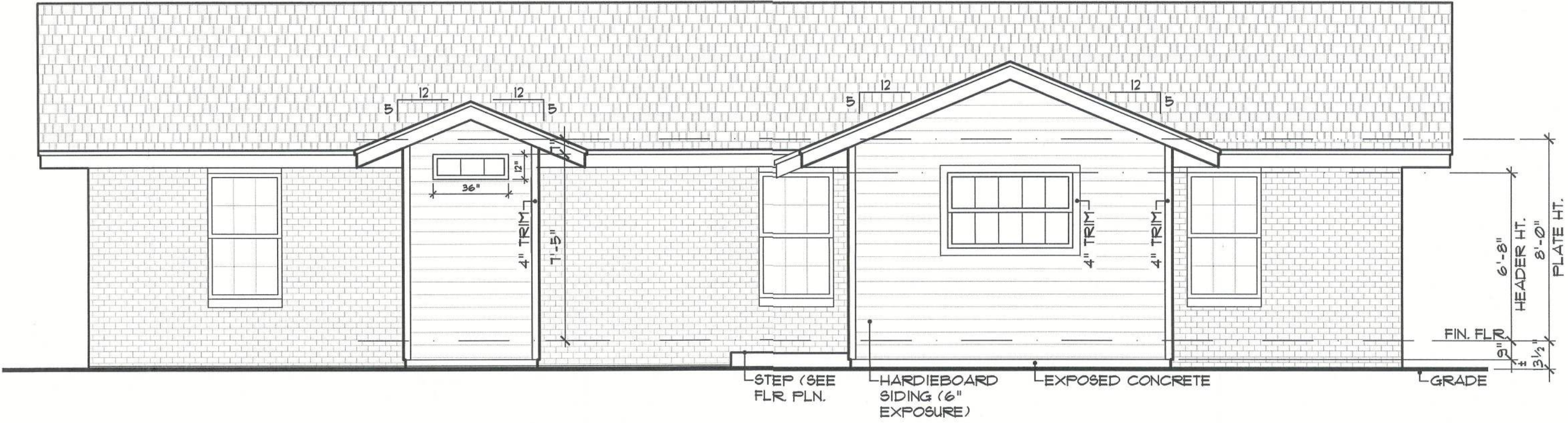
	Ceiling Mounted Light		Outlet in Ceiling		Ceiling Fan
	Pull Chain Light		Ground Fault Interrupt		Wall Sconce
	Recessed Light		Wall Switch		Chandelier
	Ceiling Mounted LED		3-Way Switch		Spot Light
	Wall Mounted Light		Dimmer Switch		Fan/Light Combination
	Duplex Receptacle		Electrical Panel		Garbage Disposal Motor
	220 V Receptacle		Disconnect Switch		
	1/2 hot, 1/2 switched		Electrical Meter		
	Water Proof Receptacle		S.D. Smoke Detector		

NOTES:

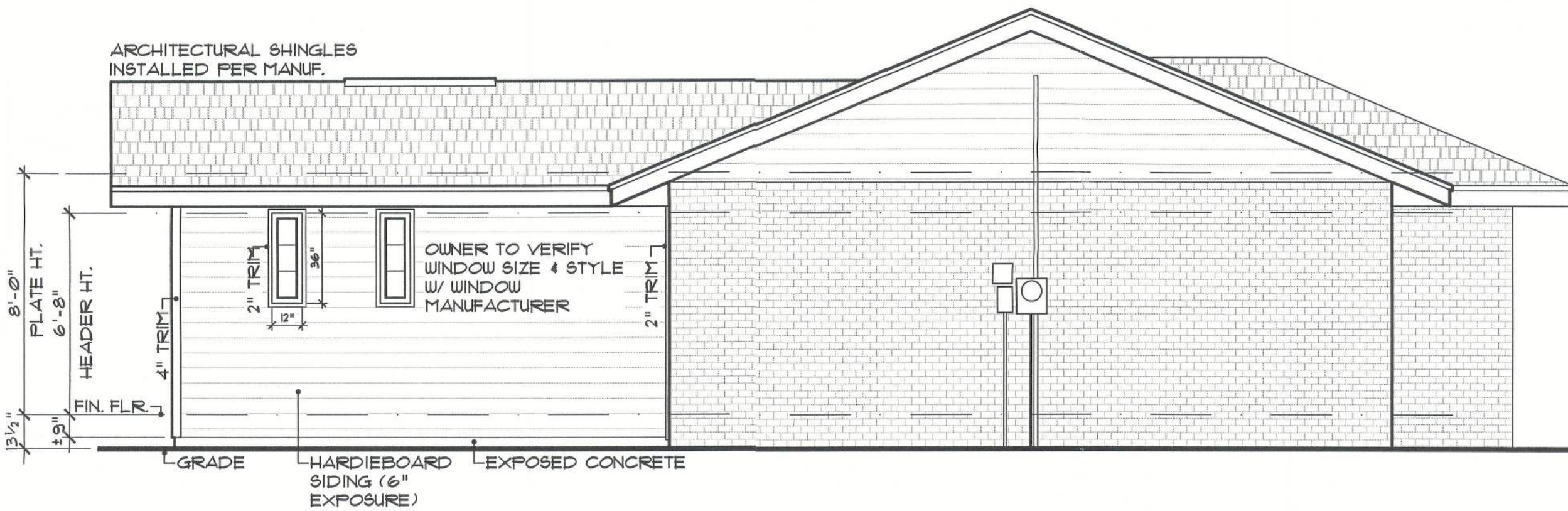
1. ALL SMOKE DETECTORS ARE TO BE HARD WIRED AND INTERCONNECTED.
2. PROVIDE ARC FAULT PROTECTION IN ALL LIVING SPACES, EXCEPT IN BATHROOMS, KITCHEN, LAUNDRY, AND GARAGES.
3. USE COMBINATION SMOKE AND CARBON MONOXIDE ALARMS, OR PROVIDE A CARBON MONOXIDE ALARM (IN ADDITION TO SMOKE) WITHIN 10' OF EACH ROOM USED FOR SLEEPING PURPOSES (SEE FBCE 2010, SEC. R315)
4. EXACT LOCATIONS OF FIXTURES AND/OR OUTLETS ARE SUGGESTED AND MEET MOST LOCAL CODE REQUIREMENTS. ADDITIONS OR ADJUSTMENTS MAY BE MADE BETWEEN OWNER AND BUILDER IN THE FIELD.



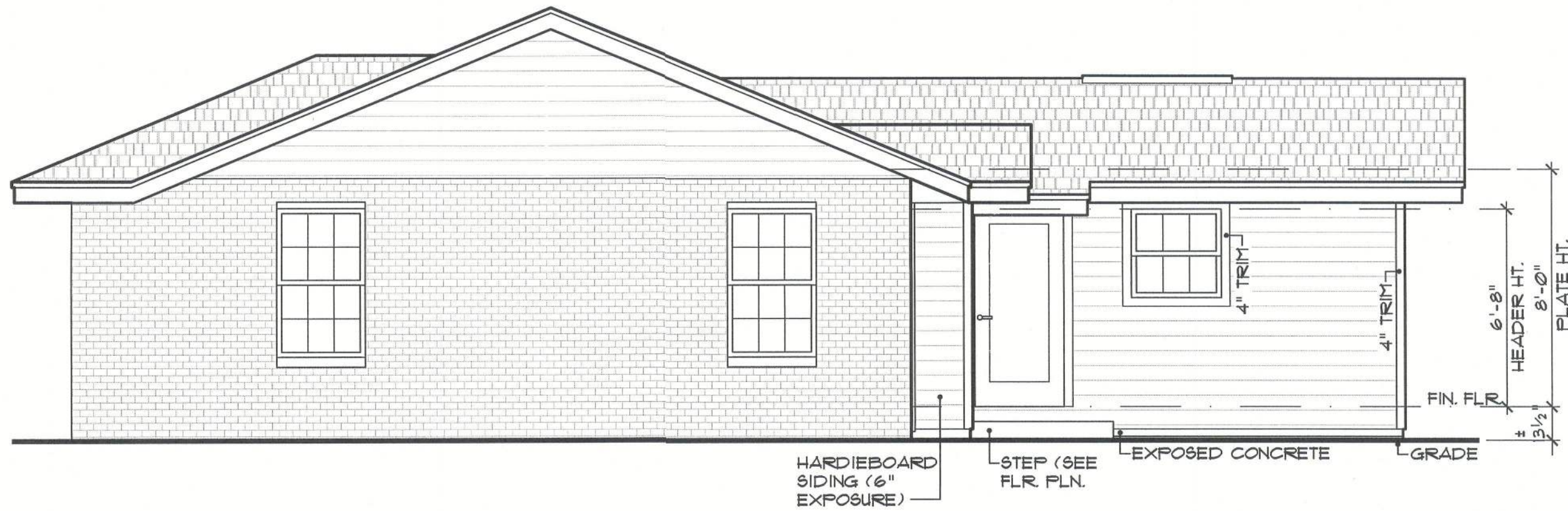
**A**  
**A2** Electrical Fixture Layout  
SCALE: 1/4" = 1'-0"



**B**  
**A2** Rear Elevation  
SCALE: 1/4" = 1'-0"



**C**  
**A2** Left Elevation  
SCALE: 1/4" = 1'-0"



**D**  
**A2** Right Elevation  
SCALE: 1/4" = 1'-0"

THE FINAL PLAN, INC.

WWW.THEFINALPLAN.COM  
TEL. 352.410.2539

CUSTOM DESIGNS, SPACE PLANNING  
TENANT BUILD OUTS, ADDITIONS, REMODELS

revisions	by

PETERSEN ADDITION  
350 SW MEADOW TERRACE  
LAKE CITY, FLORIDA

job no PETERSEN
drawn by DA
checked DA
date 07/18/22
scale AS NOTED
drawing no.

A2





SCALE: 3/8" = 1'-0" (MAY BE SUBSTITUTED FOR PRE-MANUFACTURED TRUSS)

# Foundation Plan

PETERSEN ADDITION  
350 SW MEADOW TERRACE  
LAKE CITY, FLORIDA

S1

ENGINEERING SCOPE IS LIMITED TO WIND LOAD CALCULATIONS, STRUCTURAL ELEMENTS, AND COMPONENTS.



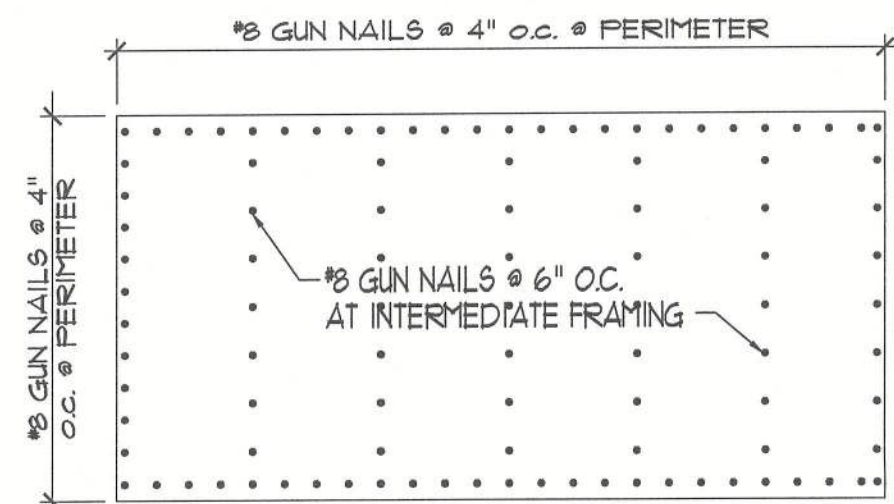
The Final Plan Inc. reserves its common law copyrights. These plans and designs are not to be reproduced for a purpose other than the completion of this project without written consent from The Final Plan, Inc.

SIZE OF OPENING (Feet-Inches)	16" o.c. STUD SPACING	
	No. of jack studs	No. of king studs
Up to 3'-6"	1	1
>3'-6" to 5'-0"	1	2
>5'-0" to 5'-6"	2	2
>5'-6" to 8'-0"	2	2

SIZE OF OPENING (Feet-Inches)	24" o.c. STUD SPACING		16" o.c. STUD SPACING	
	No. of jack studs	No. of king studs	No. of jack studs	No. of king studs
Up to 3'-6"	1	1	1	1
>3'-6" to 5'-0"	1	2	1	2
>5'-0" to 5'-6"	1	2	2	2
>5'-6" to 8'-0"	1	2	2	2
>8'-0" to 10'-6"	2	2	2	3
>10'-6" to 12'-0"	2	2	3	3
>12'-0" to 13'-0"	2	3	3	3
>13'-0" to 14'-0"	2	3	3	4

## 1 HEADER & STUD PATTERNS

### TYPICAL EXTERIOR WALL SHEATHING ATTACHMENT FOR SHEAR AND UPLIFT



NOTE: 2x4 BLOCK ALL EDGES AT  
SHEARWALL.

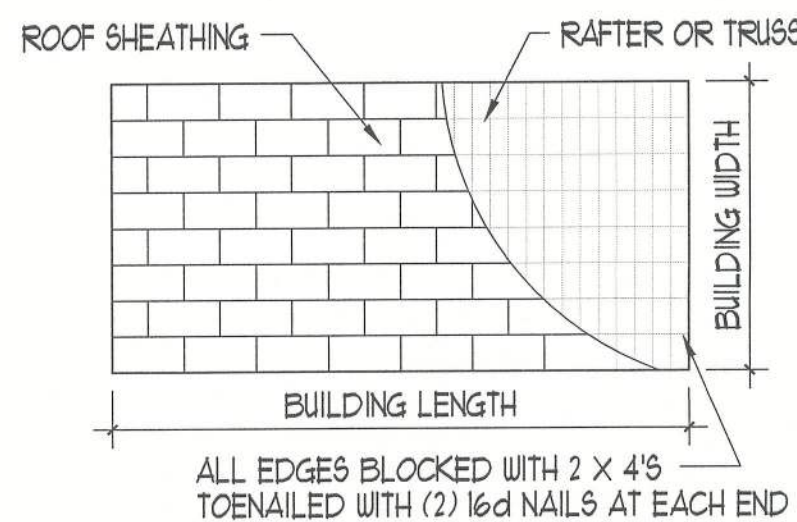
#### NAIL REQUIREMENTS:

SIZE	HEAD	LENGTH	DIA.	TENSIL STR.
8d	ROUND, MODIFIED OR T	2 1/2"	1/8"	110,000
16d	"	3"	1/4"	170,000

NOTES: 1- NAILS TO BE MFG. OF INT. STAPLE, NAIL,  
AND TOOL ASSOCIATION  
2- GUN NAILS SHALL BE PERMITTED AS AN  
ACCEPTABLE FASTENER FROM ANY MANUF.

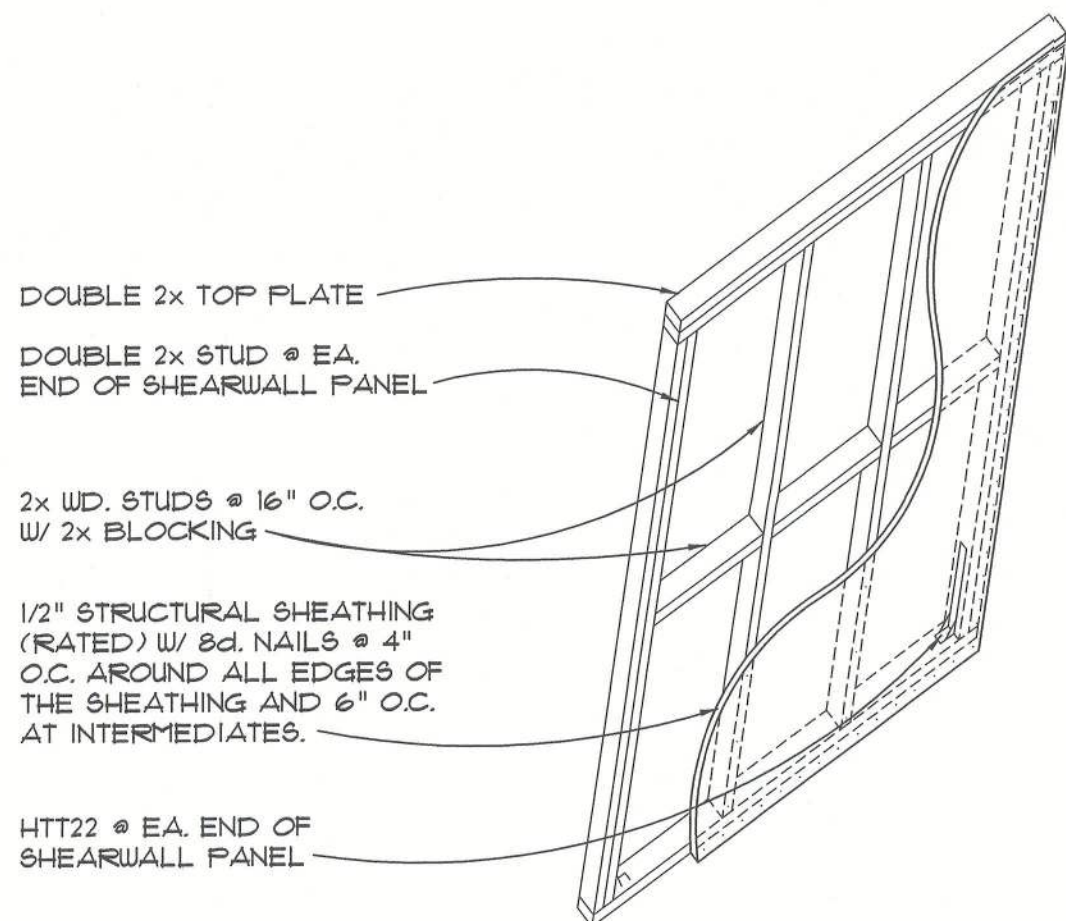
## 2 NAILING PATTERNS

SCALE: N.T.S.



ALL EDGES BLOCKED WITH 2 X 4'S  
TOENAILLED WITH (2) 16d NAILS AT EACH END

## 3 GABLE END & SHEATHING LAYOUT



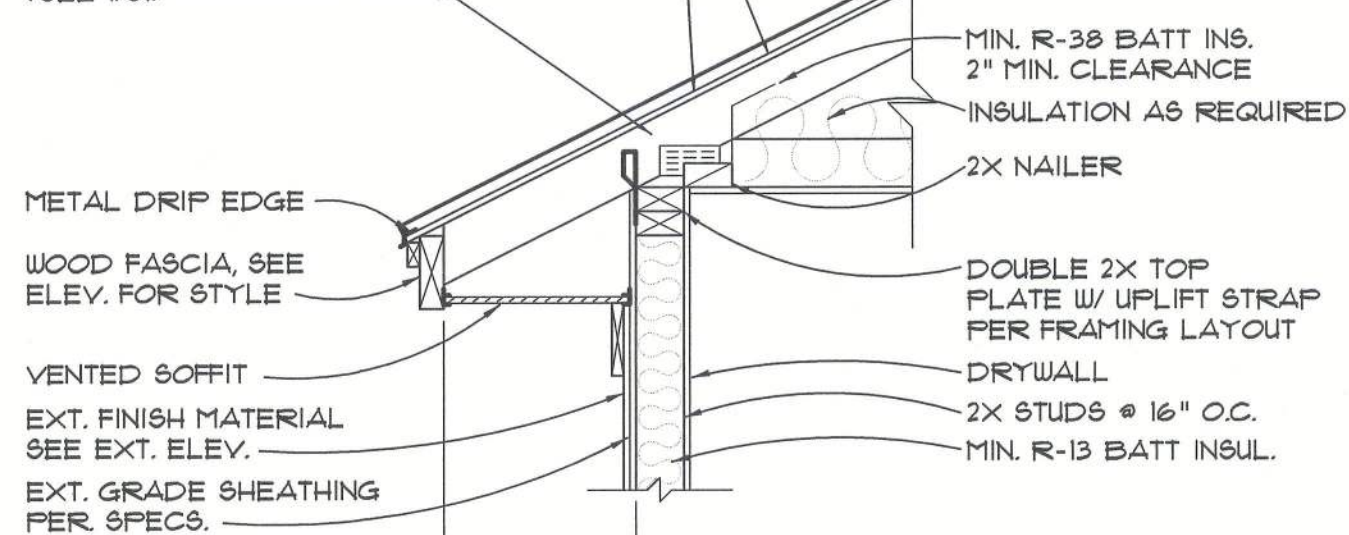
## 4 SHEARWALL PANEL

2x FRAMING NOTE:  
ALL STRUCTURAL 2x TO BE #2 S.Y.P.  
OR BETTER

PRE-MANUFACTURED METAL ROOF  
INSTALLED PER MANUF.

ROOF SHEATHING PER FBCR TABLE 803.2.2, NAILING  
PATTERN PER TABLE 803.2.3.1

UNDERLAYMENT PER FBCR TABLE 905.1.1.1  
2x6 RAFTERS @ 24" o.c.  
(SEE 1/51)



BATT INSUL. AS REQ.  
2"x STUDS @ 16" o.c.  
EXT. GRADE SHEATHING  
PER SPECS.  
EXT. FINISH MATERIAL  
SEE EXT. ELEV.

FLASHING AS REQ.  
SEE FLOOR PLAN  
FOR WINDOW SIZE

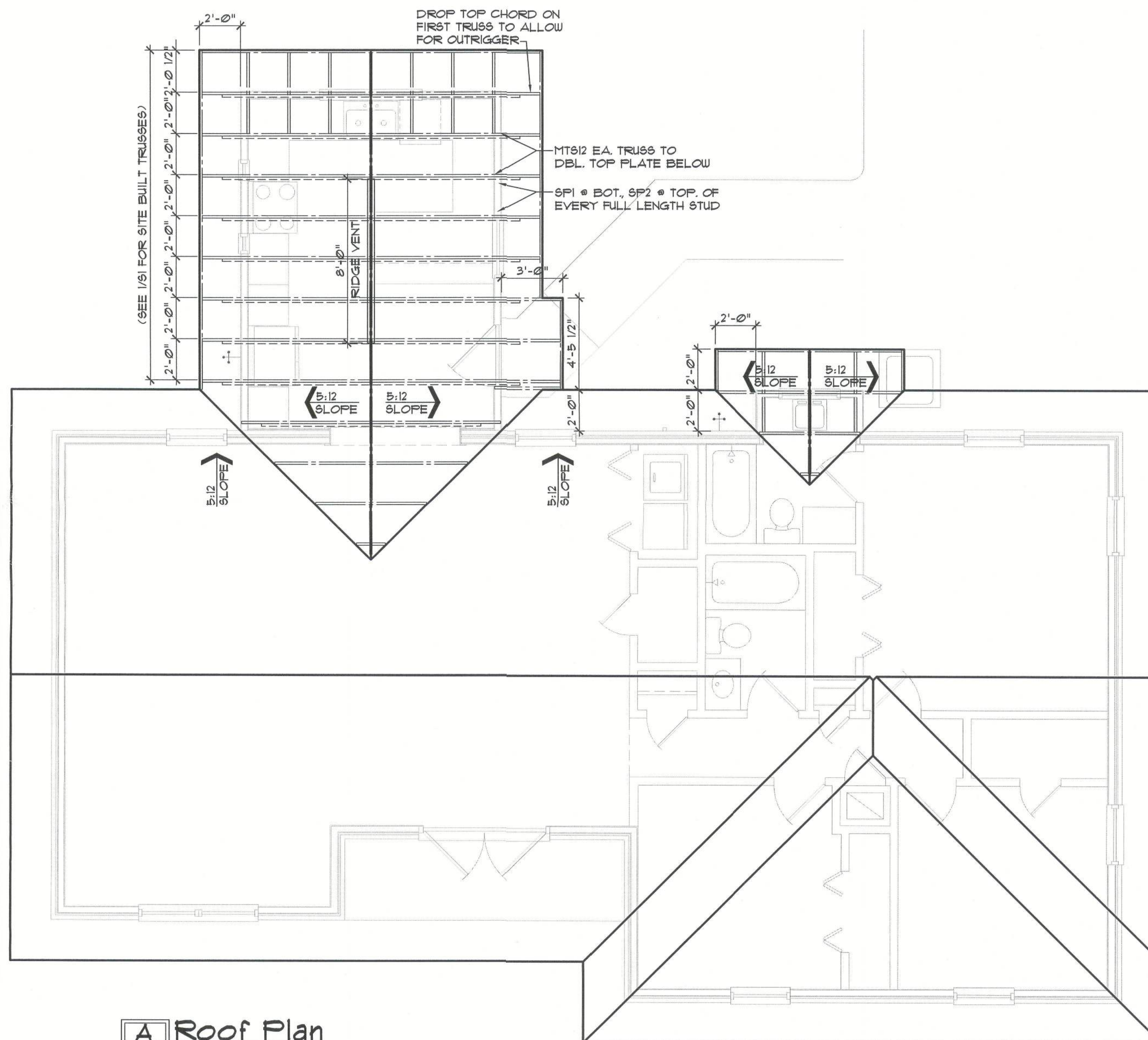
SEE FLOOR PLAN  
FOR WINDOW SIZE  
P.T. WINDOW SILL  
EXT. FINISH MATERIAL  
SEE EXT. ELEV.  
EXT. GRADE SHEATHING  
PER SPECS.  
2"x STUDS @ 16" o.c.

EXT. FINISH MAT.  
SEE EXT. ELEV.  
EXT. GRADE SHEATHING  
PER SPECS.  
1/2" DIA. X 10" ANCHOR  
BOLTS OR 1/2" DIA. X 6"  
EXPANSION BOLTS @  
21" o.c. w/ 2" DIA. X  
1/8" WASHERS

4" CONC. SLAB w/  
VAPOR BARRIER  
PROVIDE ±3 1/2" OF FILL  
PRIOR TO CONCRETE POUR  
CLEAN, COMPACTED,  
TERMITE TREATED FILL.

### Frame Wall Section SCALE: 3/4" = 1'-0"

VENT SCHEDULE		FBC RES. 1TH EDITION (2020) 806.2 NFVA - NET FREE VENTILATED AREA
ROOF VENTING REQUIRED FOR TYP. ATTIC		
210 SQ. FT. TOTAL / 50 SQ. FT.		±14 SQ. FT. NFVA REQUIRED
INTAKE	26 LF. 24" VENTED SOFFIT @ EAVE X 20 SQ. FT. PER LF. (GEORGIA PACIFIC VINYL VENT)	±208 SQ. FT. NFVA
	8 LINEAL FEET OF RIDGE VENT @ 110 / SF. (PROFILEVENT)	±94 SQ. FT. NFVA
TOTAL NFVA PROVIDED		±302 SQ. FT. NFVA



### A Roof Plan SCALE: 1/4" = 1'-0"

revisions by

PETERSEN ADDITION  
350 SW HEADQUARTER TERRACE  
LAKE CITY, FLORIDA

Seal  
GILL ENGINEERING  
SERVICES, INC  
AUTH # 30824  
GARY GILL PE #51942  
163 SW MIDTOWN PL  
LAKE CITY, FL 32025  
386-590-1242

Job no  
PETERSEN  
drawn by  
DA  
checked  
DA  
date  
07/18/22  
scale  
AS NOTED  
drawing no.

S2



ENGINEERING SCOPE IS LIMITED TO WIND LOAD CALCULATIONS.  
STRUCTURAL ELEMENTS, AND COMPONENTS.