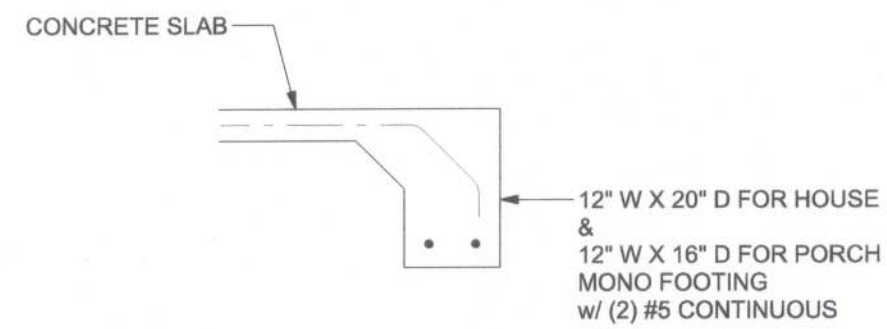
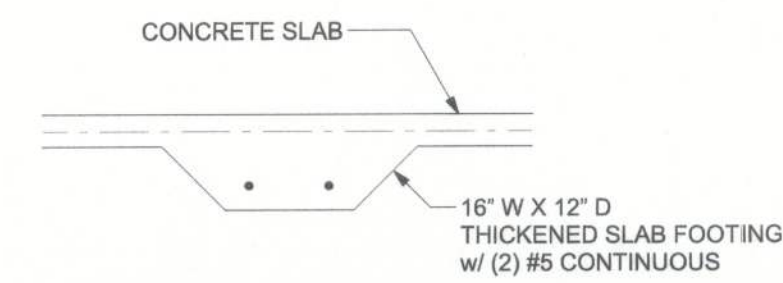


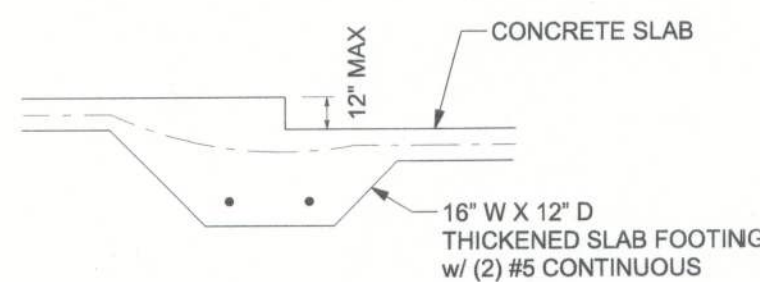
F1 S-2 OPTIONAL STEM WALL FOOTING
SCALE: 1/2" = 1'-0"



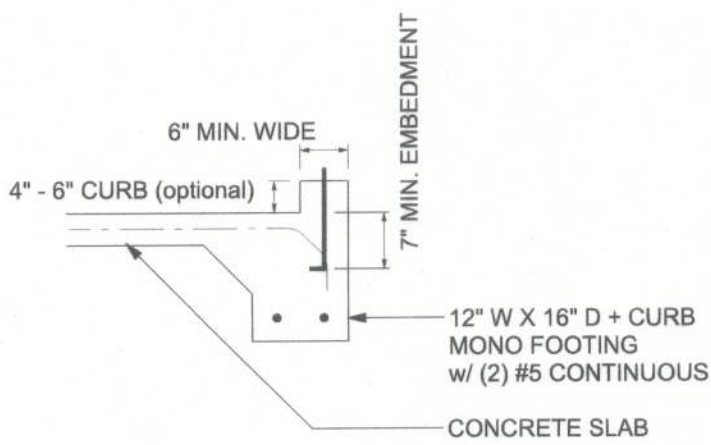
F1 S-2 MONOLITHIC FOOTING
SCALE: 1/2" = 1'-0"



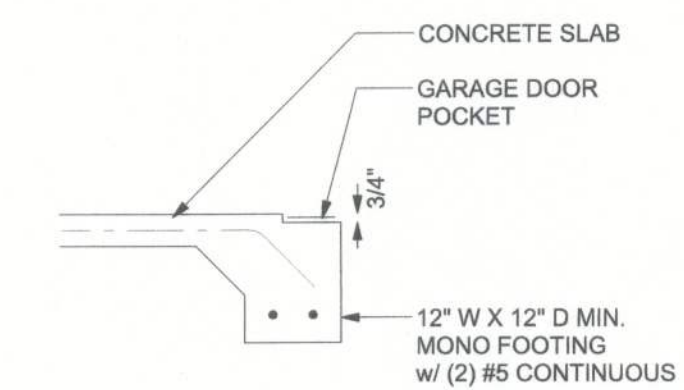
F2 S-2 INTERIOR BEARING FOOTING
SCALE: 1/2" = 1'-0"



F3 S-2 INTERIOR BEARING STEP FOOTING
SCALE: 1/2" = 1'-0"



F4 S-2 MONOLITHIC CURB FOOTING
SCALE: 1/2" = 1'-0"



F5 S-2 GARAGE DOOR POCKET FOOTING
SCALE: 1/2" = 1'-0"

TALL STEM WALL TABLE:

The table assumes 40 ksi for #5 rebar and 60 ksi for #7 & #8 rebar with 6" hook in the footing and bent 24" into the reinforced slab at the top. The vertical steel is to be placed toward the tension side of the CMU wall (away from the soil pressure, within 2" of the exterior side of the wall). If the wall is over 8' high, add Duowall ladder reinforcement at 16" OC vertically or a horizontal bond beam with 1#5 continuous at mid height. For higher parts of the wall 12" CMU may be used with reinforcement as shown in the table below.

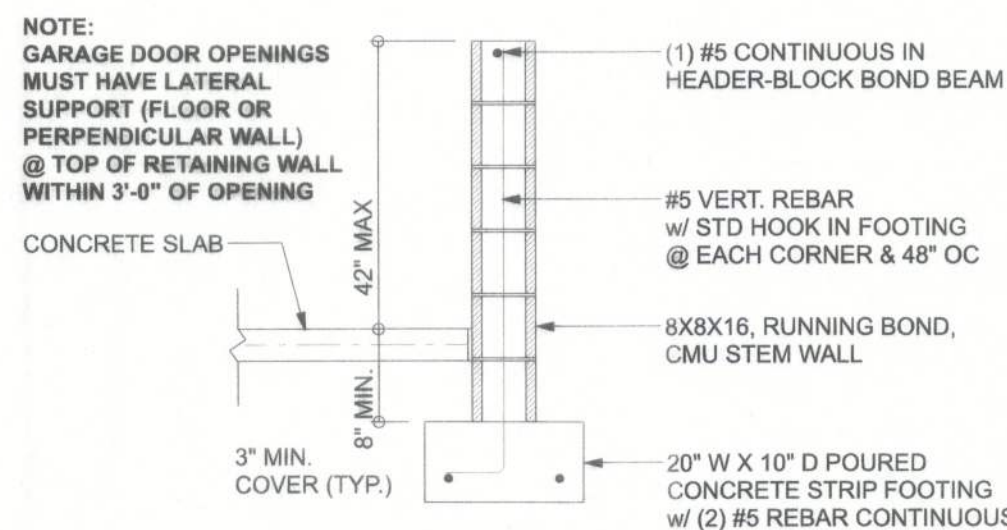
STEMWALL HEIGHT (FEET)	UNBALANCED BACKFILL HEIGHT	VERTICAL REINFORCEMENT FOR 8" CMU STEMWALL (INCHES O.C.)			VERTICAL REINFORCEMENT FOR 12" CMU STEMWALL (INCHES O.C.)		
		#5	#7	#8	#5	#7	#8
3.3	3.0	96	96	96	96	96	96
4.0	3.7	96	96	96	96	96	96
4.7	4.3	88	96	96	96	96	96
5.3	5.0	56	96	96	96	96	96
6.0	5.7	40	80	96	80	96	96
6.7	6.3	32	56	80	56	96	96
7.3	7.0	24	40	56	40	80	96
8.0	7.7	16	32	48	32	64	80
8.7	8.3	8	24	32	24	48	64
9.3	9.0	8	16	24	16	40	48

MASONRY NOTE:

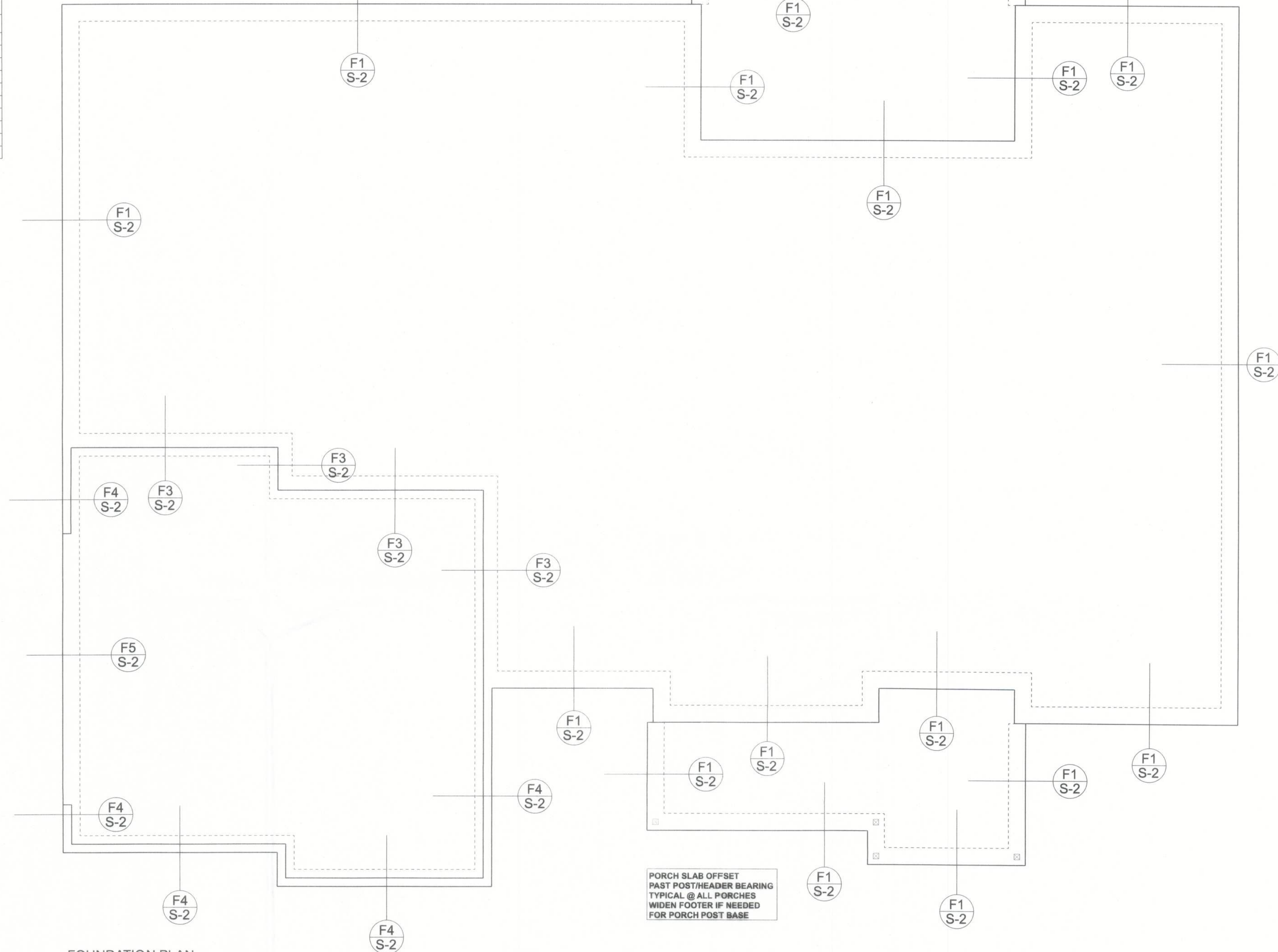
MASONRY CONSTRUCTION AND MATERIALS FOR THIS PROJECT SHALL CONFORM TO ALL REQUIREMENTS OF "SPECIFICATION FOR MASONRY STRUCTURES" (ACI 530-1/ASCE 8/TMS 602). THE CONTRACTOR AND MASON MUST IMMEDIATELY, BEFORE PROCEEDING, NOTIFY THE ENGINEER OF ANY CONFLICTS BETWEEN ACI 530-1-02 AND THESE DESIGN DRAWINGS. ANY EXCEPTIONS TO ACI 530-1-02 MUST BE APPROVED BY THE ENGINEER IN WRITING.

ACI 530-1-02 Section	Specific Requirements
1.4A Compressive strength	8" block bearing walls Fm = 1500 psi
2.1 Mortar	ASTM C 270, Type N, UNO
2.2 Grout	ASTM C 476, admixtures require approval
2.3 CMU standard	ASTM C 90-02, Normal weight, Hollow, medium surface finish, 8"x8"x16" running bond and 12"x12" or 16"x16" column block
2.3 Clay brick standard	ASTM C 216-02, Grade SW, Type FBS, 5.5"x2.75"x11.5"
2.4 Reinforcing bars, #3 - #11	ASTM 615, Grade 40, Fy = 40 ksi, Lap splices min 40 bar dia. (25" for #8)
2.4F Coating for corrosion protection	Anchors, sheet metal ties completely embedded in mortar or grout. ASTM A225, Class 580, 0.60 oz/lb or 304SS
2.4F Coating for corrosion protection	Joint reinforcement in walls exposed to moisture or wire ties, anchors, sheet metal ties not completely embedded in mortar or grout. ASTM A153, Class B2, 1.50 oz/lb or 304SS
3.3.E.2 Pipes, conduits, and accessories	Any not shown on the project drawings require engineering approval.
3.3.E.7 Movement joints	Contractor assumes responsibility for type and location of movement joints if not detailed on project drawings.

BOTTOM OF EXTERIOR FOOTINGS SHALL BE A MINIMUM OF 12" BELOW UNDISTURBED SOIL OR ENGINEERED FILL



F4 S-2 OPTIONAL STEM WALL CURB FOOTING
SCALE: 1/2" = 1'-0"



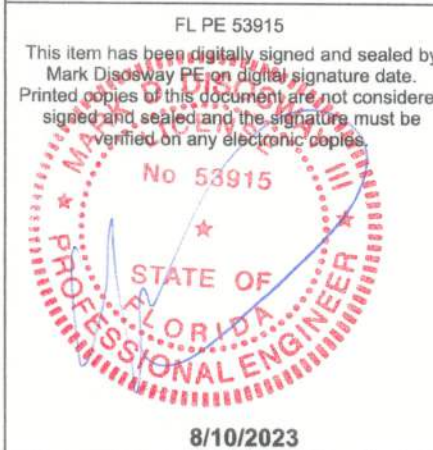
FOUNDATION NOTES

- FN - 1 DIMENSIONS ON FOUNDATION & STRUCTURAL SHEETS ARE NOT EXACT. REFER TO ARCHITECTURAL PLANS FOR ACTUAL DIMENSIONS, RECESSES IN SLAB, STEP DOWNS, ETC. DISCREPANCY DESIGN GROUP OR MARK DISOWAY, P.E. IS NOT RESPONSIBLE FOR DIMENSION ERRORS ON THIS PLAN.
- FN - 2 CONTRACTOR SHALL VERIFY NEED FOR INTERIOR BEARING IN ALL AREAS BY REVIEWING THE ROOF TRUSS PLAN (BY THE SUPPLIER) BEFORE FINALIZING FOUNDATION PLAN.
- FN - 3 THE SLAB SHALL BE 4" CONCRETE SLAB REINFORCED w/ 6X6-14/4 WELDED WIRE MESH PLACED ON CHAIRS #1 1/2" DEPTH OR FIBER MESH CONCRETE, 6-MIL POLY VAPOR BARRIER w/ 6" LAPS SEALED w/ POLY TAPE OVER TERMITHE-TREATED & COMPACTED FILL.

Gibraltar Contracting, LLC

Charles & Nastoshia Miller Res.

PROJECT ADDRESS:
453 SW Mossy Oak Way,
Lake City, FL 32024



DIMENSIONS:
Stated dimensions supercede scaled dimensions. Refer all questions to Mark Disoway, P.E. for resolution. Do not proceed without clarification.

COPYRIGHTS AND PROPERTY RIGHTS:
Mark Disoway, P.E. hereby expressly reserves its common law copyrights and property right in these instruments of service. This document is not to be reproduced, altered or copied in any form or manner without first the express written permission and consent of Mark Disoway.

CERTIFICATION: I hereby certify that I have examined this plan, and that the applicable portions of the plan, relating to wind engineering comply with the 7th Edition Florida Building Code Residential (2020) to the best of my knowledge.

LIMITATION: This design is valid for one building, at specified location.

Mark Disoway P.E.
163 SW Midtown Place
Suite 103
Lake City, Florida 32025
386.754.5419
disowaydesign@gmail.com

JOB NUMBER:
230978
S-2
OF 3 SHEETS