

BUSINESS FACILITIES for:

MARK LANE

BAYA AVENUE, LAKE CITY, FLORIDA,

D r a w i n g | I n d e x

C&I	COVER SHEET, DRAWING INDEX
L&P	LIFE SAFETY PLAN
G	GENERAL NOTES
A	ELEVATIONS & ADA DETAILS
A2	FLOOR PLAN & ELECTRICAL PLAN, NOTES, DETAILS & PANEL
A3	PERIMETER FOUNDATION
A4	ARCHITECTURAL DETAILS

REVISION:

10/10/2021
N.P. Geisler, Architect
AR0007005

DRAWN:

12/8

BUSINESS FACILITY for
MARK LANE
BAYA AVENUE, LAKE CITY, FLORIDA
COVER SHEET



DATE:

14 SEP 2021

COM:

2K2045

SHEET:

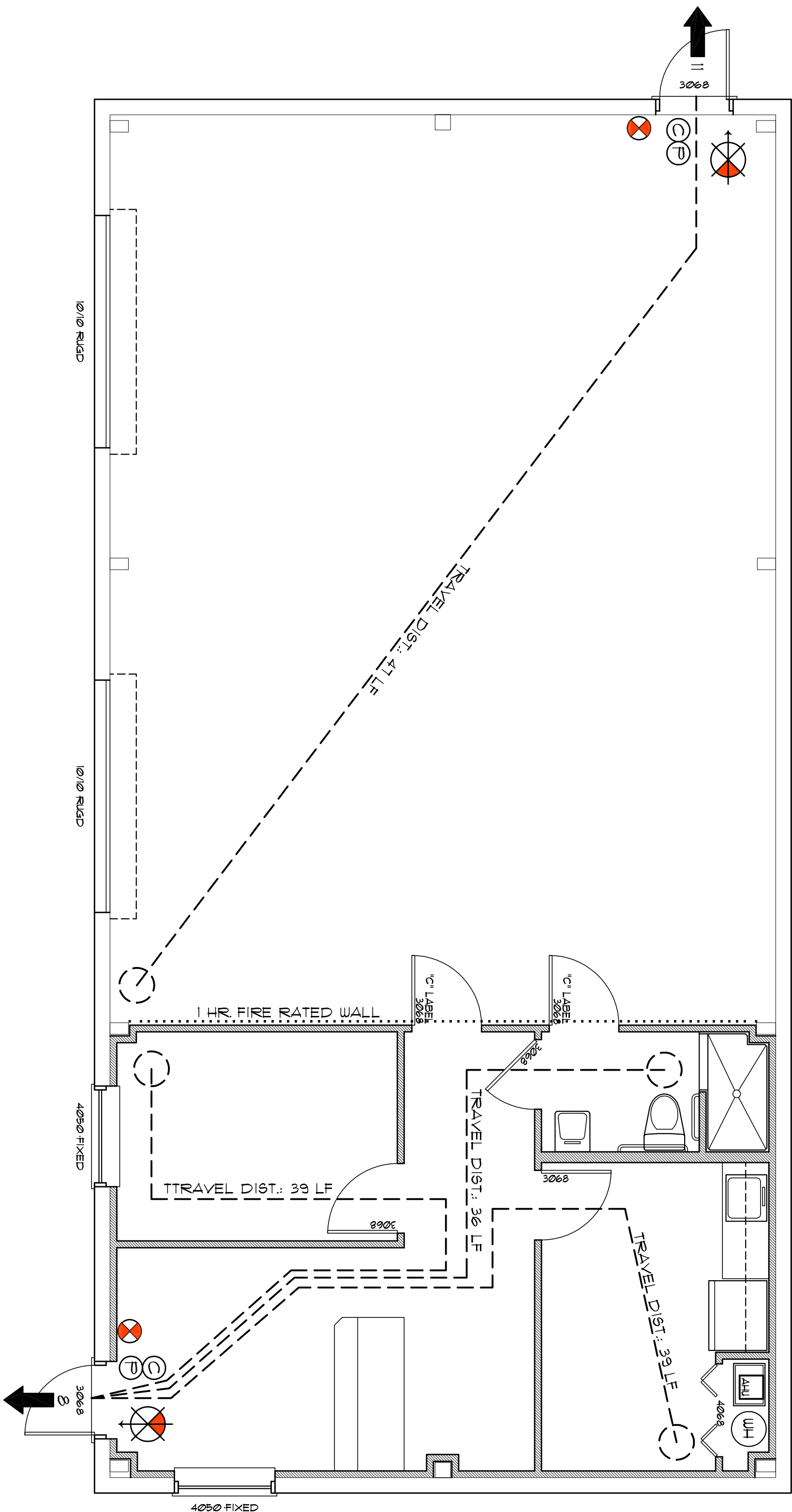
C&I

1 OF 1

Digitally signed by: N. P. GEISLER
DN: CN = N. P. GEISLER
C = US, O = AR0007005
OU = ARCHITECT
Date: 2021.11.15 14:56:
25 -05'00'

N. P.
GEISLER

AR0007005



LIFE SAFETY PLAN

SCALE: 1/4" = 1'-0"

OCCUPANCY LOAD - BUSINESS

USAGE/ASIS	AREA	OCCUPANTS
RECEPTION AREA	2234 SF	3 OCCUPANTS
1/100 SF		
BRKFAST ROOM	1182 SF	2 OCCUPANTS
1/160 SF		
RESTROOM	494 SF	1 OCCUPANT
1/100 SF		
OFFICE/BUSINESS	1084 SF	1 OCCUPANT
1/100 SF		
SHOP AREA	11235 SF	11 OCCUPANTS
1/100 SF		
BUILDING WALLS	1711 SF	1 OCCUPANT
1/1600 SF		
BUILDING TOTALS	18000 SF	18 OCCUPANTS

EXIT ACCESS TRAVEL DISTANCE
PER FBC 10B, TABLE 10B.1
OCCUPANCY - BUSINESS
150 FT. (W/O SPRINKLER SYSTEM)
250 FT. (W/SPRINKLER SYSTEM)

LEGEND

- EXIT LIGHT - ARROW REPRESENTS DIRECTION OF EXIT - PER 2070 FBC 10B(3), 10B(5) & 10B(5.6)
- WALL LINING "ABC" FIRE EXTINGUISHER
- DOOR/CLOSER FOR EXITING OR RATING REASONS
- PANIC DEVICE
- DUAL HEAD EMERGENCY LIGHTING W/ BATT. PACK PER 2070 FBC 10B(6)
- AREA SQUARE FOOTAGE
- PRIMARY EGRESS W/EXIT CAPACITY
- ALTERNATE EGRESS W/EXIT CAPACITY

NOTE!

EMERGENCY LIGHTING AND EXIT SIGNS SHALL BE PROVIDED AS DIRECTED BY THE FIRE MARSHAL, AND SHALL BE UNIED PER NEC 100-17F.

NOTE!

SPOKE DETECTORS SHALL BE MOUNTED NOT LESS THAN 30" ABOVE FINISHED FLOOR AND SHALL BE THE IONIZATION TYPE. FINISHED FLOOR SHALL BE THE FRONT ECH STONE PANEL IMMEDIATE BACKUP.

NOTE!

MAXIMUM COMMON PATH OF EGRESS IS LESS THAN 12'-0" FROM ALL LOCATIONS PER 1009 FBC 10H.3

NOTE!

ALL DOOR NUMBERS AND ROOM SIGNAGE SHALL BE EQUIPPED W/ TACTICAL CHARACTERS IN CONTRAST W/ 7009 FBC 10B(5.4)

NOTE!

TRAVEL DISTANCES SHOWN ARE MAXIMUM FOR EMERGENCY EGRESS. DISTANCES SHOWN ARE LESS THAN THAT SHOWN. TRAVEL DISTANCES ARE LESS THAN THAT SHOWN.



8" SQ. HALTSEE CROSS W/ "FIR" IDENTIFIER SIGNAGE MOUNTED @ 60" ABV. WALKWAY LOCATE AS DIRECTED BY THE FIRE MARSHAL.

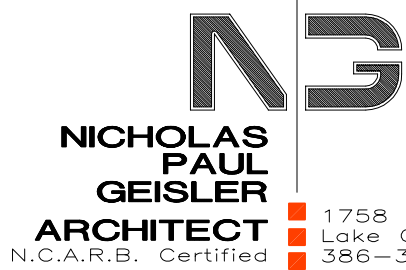
REVISION:

12/19/21, 2021
N.P. Geisler, Architect
AR0007005

DRAWN:

128

BUSINESS FACILITY for
MARK LANE
BAYA AVENUE, LAKE CITY, FLORIDA
LIFE SAFETY PLAN



DATE:

14 SEP 2021

COM:

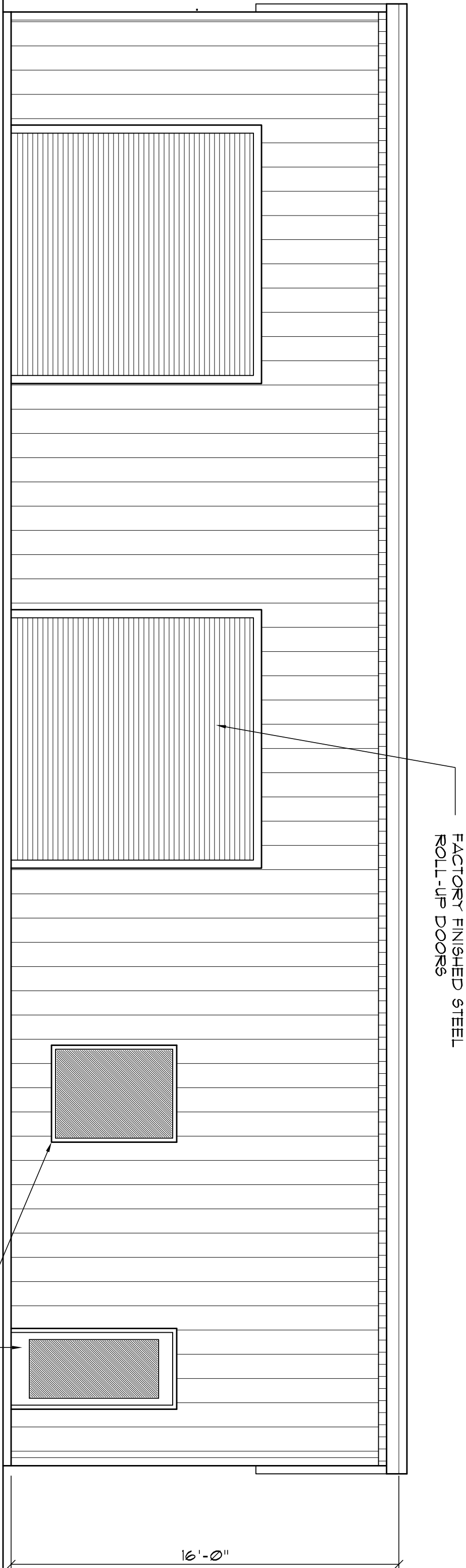
2K2045

SHEET:

LSP.1

1 OF 1

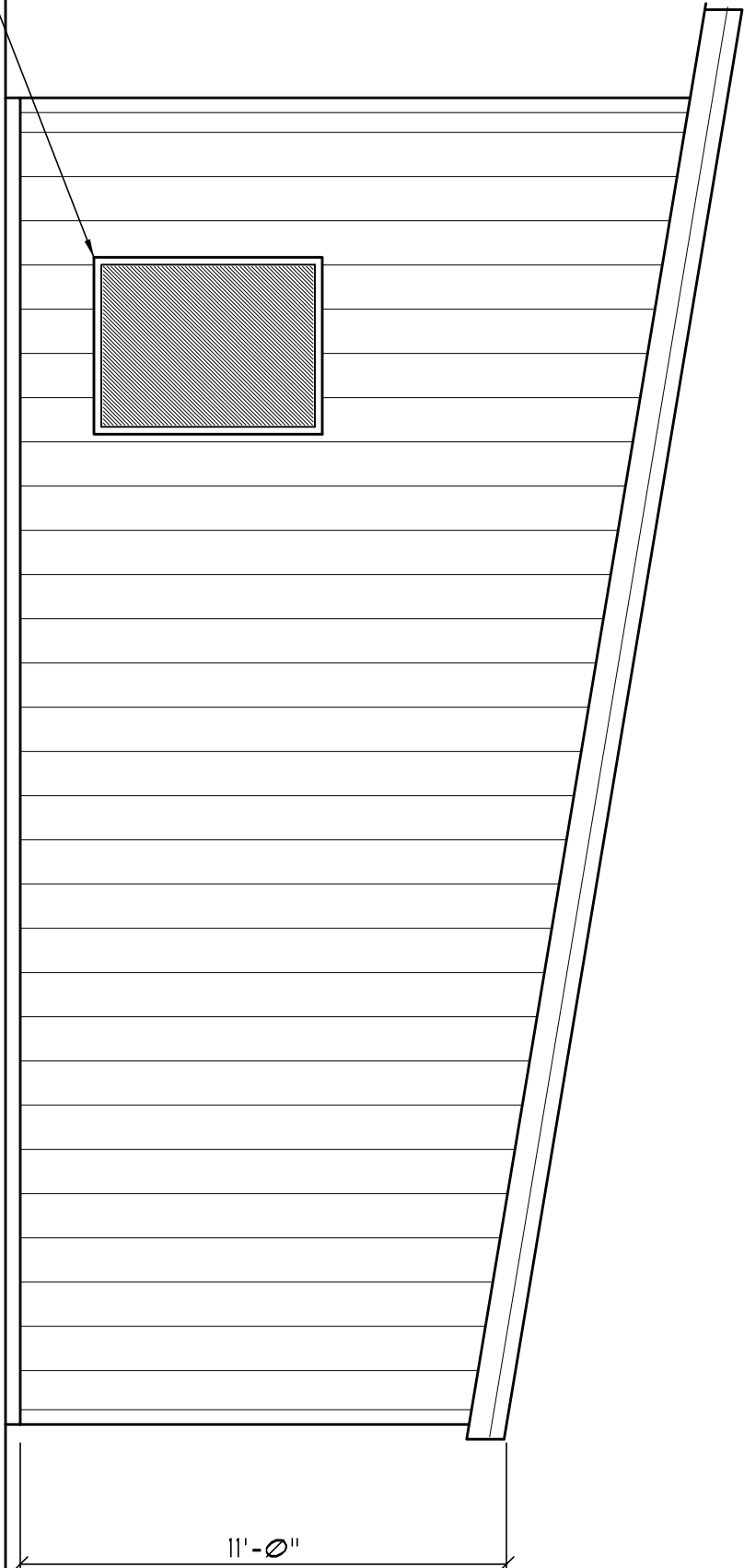
AR0007005



PENB AS PER ENGINEERED METAL BUILDING SHOP DRAWINGS

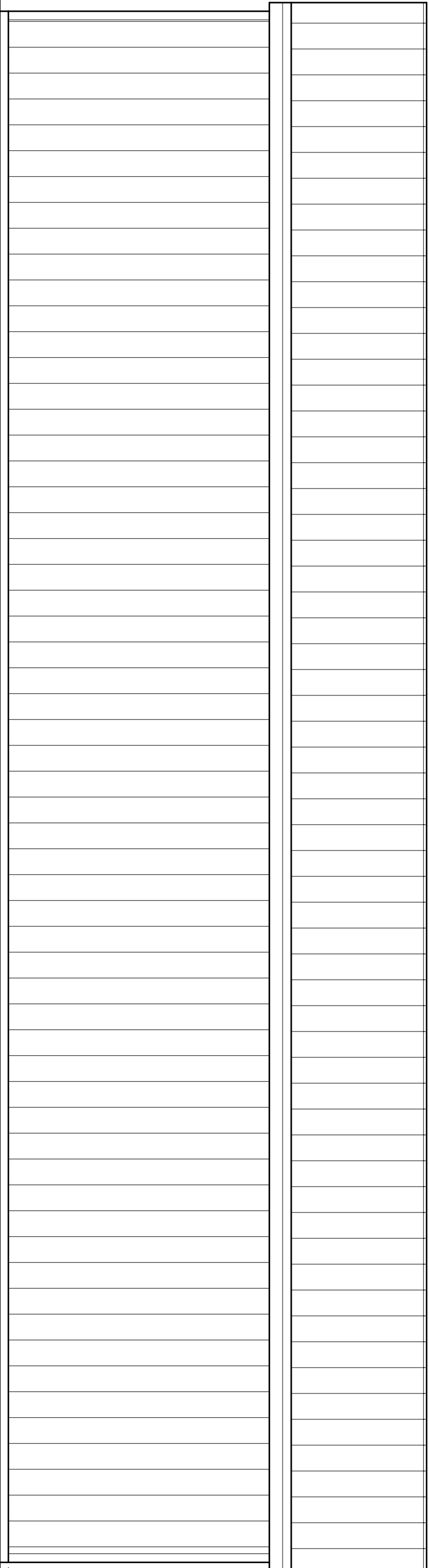
FRONT ELEVATION

SCALE: 1/4" = 1'-0"



LEFT SIDE ELEVATION

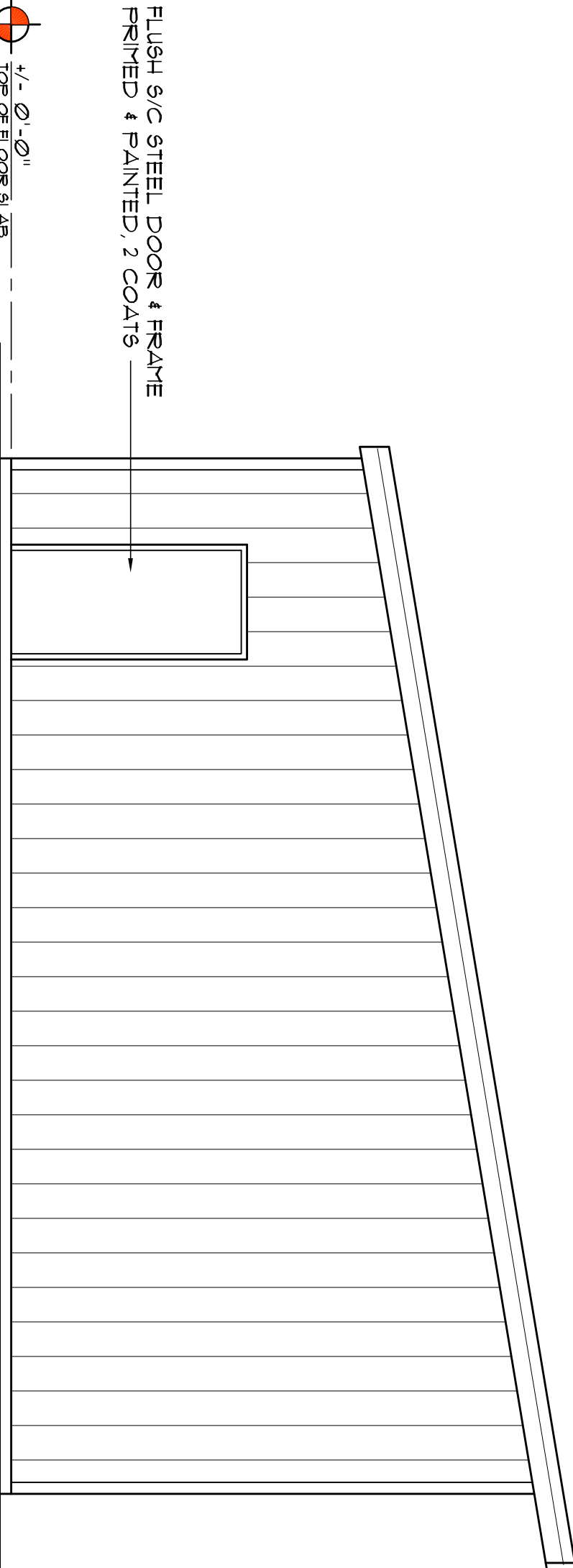
SCALE: 1/4" = 1'-0"



PENB AS PER ENGINEERED METAL BUILDING SHOP DRAWINGS

REAR ELEVATION

SCALE: 1/4" = 1'-0"



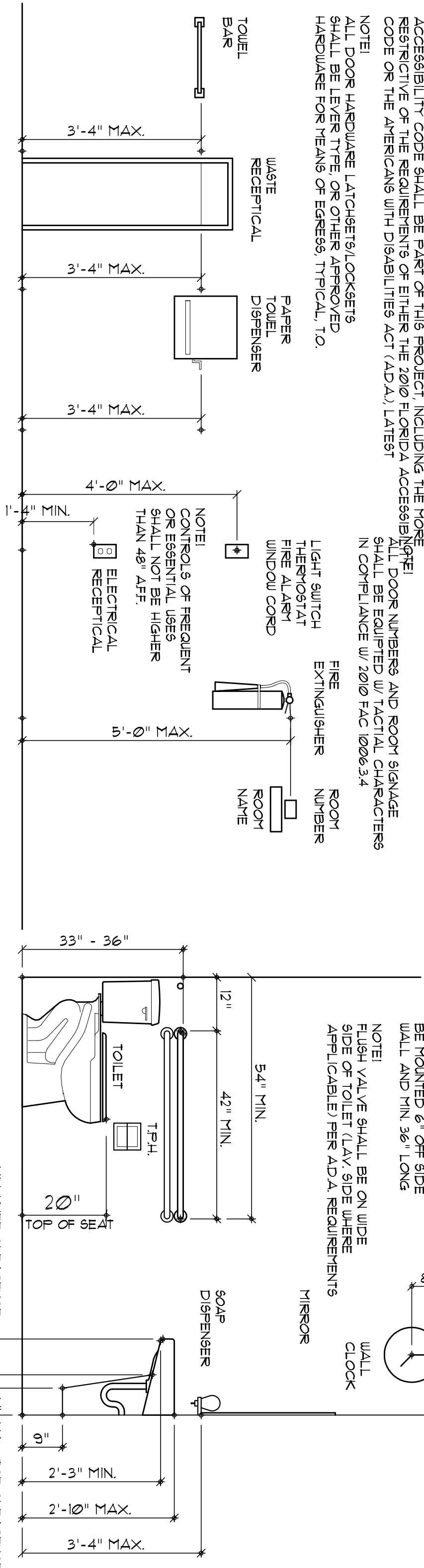
RIGHT SIDE ELEVATION

SCALE: 1/4" = 1'-0"

2010 FLORIDA ACCESSIBILITY CODE

FULL IMPLEMENTATION OF THE RULES AND REQUIREMENTS OF THE 2010 FLORIDA ACCESSIBILITY CODE SHALL BE PART OF THIS PROJECT INCLUDING THE MORE RESTRICTIVE OF THE REQUIREMENTS OF EITHER THE 2010 FLORIDA ACCESSIBILITY CODE OR THE AMERICANS WITH DISABILITIES ACT (ADA) LATEST

NOTE: ALL DOOR HARDWARE LATCHES/LOCKS SHALL BE LEVER TYPE OR OTHER APPROVED HARDWARE FOR MEANS OF EGRESS TYPICAL TO



STANDARD MOUNTING PER A.D.A. REQUIREMENTS

SCALE: 1/2" = 1'-0"

TOILET ROOM ACCESSORIES		
MANUF.	ITEM	MODEL N.
BRADLEY	PAPER TOWEL DISP.	2494
BOBRICK	HANDICAP RAILING	B-5806-59-36
BOBRICK	TOILET TISSUE DISP.	B-2892
BOBRICK	SOAP DISP.	B-2111
-	MIRROR	-

BOBRICK WASHROOM ACCESSORIES
200 CONFERENCE DRIVE
CLIFTON PARK, NY 12065-1950
800-811-1444
www.bobrick.com

NOTE: MANUFACTURERS LISTED ARE FOR BASIS OF COMPARISON FOR "AS EQUAL" PRODUCTS. OTHER MANUFACTURERS' PRODUCTS MAY BE SUBSTITUTED WITH ARCHITECT'S APPROVAL FOR PRODUCTS MEETING OR EXCEEDING THE SPECIFICATIONS FOR THOSE LISTED IN THE SCHEDULE ABOVE.

ELECTRICAL PLAN NOTES

1. WIRE ALL APPLIANCES HVAC UNITS AND OTHER EQUIPMENT PER MANF. SPECIFICATIONS.
2. CONSULT THE OWNER FOR THE NUMBER OF SEPARATE TELEPHONE LINES TO BE INSTALLED.
3. TELEPHONE, TELEVISION AND OTHER LOW VOLTAGE DEVICES OR OUTLETS SHALL BE AS PER THE OWNER'S SECTION OF NEC LATEST EDITION.
4. ALL RECEPTICALS IN RESTROOMS, LIFT LOCATIONS AND BREAK ROOM AREAS SHALL BE ON GROUND FAULT INTERRUPTER CIRCUITS (GFI).
5. INSTALLATION SHALL BE PER WATT, ELECTRIC CODE.
6. ALL GROVE DETECTORS SHALL BE 120V W/ BATTERY BACKUP AND BE NON-FUSIBLE TYPE AND SHALL BE INTERLOCKED TOGETHER.

NOTE!
ELECTRICAL CONTR SHALL PREPARE 14S-BUILT IN SHOP DUGS INDICATING ALL ELECTRICAL WORK INCLUDING ANY CHANGES TO THE ELEC. PLAN, ADVISE TO THE ELEC. PLAN ENGINEER. ALL CHANGES SHALL BE SUBMITTED TO THE ELEC. PLAN ENGINEER FOR REVIEW AND APPROVAL. ALL WORK SHALL BE IN ACCORDANCE WITH THE 2020 NEC LATEST EDITION. REFER TO ALL UNDERGROUND WIRE LOCATIONS ROUTING/DEPTH. ELECTRICAL SHALL PROVIDE 1 COPY OF AS-BUILT DUGS TO OWNER 11 COPY TO THE PERMIT ISSUING AUTHORITY.

Electrical Symbols

POWER

- ⊕ DUPLEX WALL RECEPTACLE
- ⊕ 240V OUTLET
- ⊕ GND FAULT INTERRUPTER DUPLEX RECEPT.
- ⊕ JUNCTION BOX
- ⊕ MOTOR
- ⊕ ELECTRICAL PANEL
- ⊕ EXHAUST FAN
- ⊕ SMOKE DETECTOR 120V
- ⊕ NON-FUSED DISC. SWITCH

LIGHTING

- \$ 999 WALL SWITCH
- \$ DPDT WALL SWITCH (3-WAY)
- 4 LAMP LED SURF-MOUNTED W/ ACRYLIC LENSE
- LED WALL-COLG LIGHT FIXTURE
- LED HAT LED DOWN LIGHT W/ SPECULAR REFLECTOR
- LED HIGH BAY
- EXIT LIGHT W/ GREEN LIGHTED LETTERING
- DBL. HEAD EMERGENCY LIGHT W/ BATT. PACK
- SWITCH/PIVOT WIRING
- CONTROL WIRE 1/00V VOLTAGE
- TIME CLOCK

NFPA 720 SERVICE DEMAND
LOAD COMPUTATION:

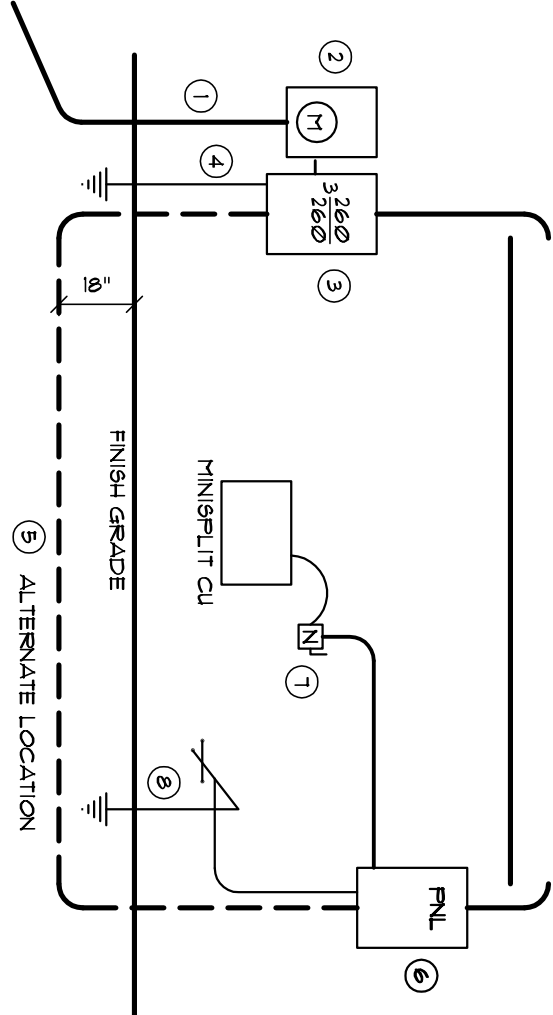
LOAD	BASE	DEMAND LOAD
AIR CONDITIONING	168kVA @ 15%	560 WVA
HEAT (HEAT PUMPS)		560 WVA
LIGHTING	350W X 1800 #	6.30 WVA
ELECTRICALS	7800 X 1800/1400 = 4500 WVA (80kVA @ 100% / 80kVA @ 50%)	4500 WVA
ELH	45 W @ 15%	56.3 WVA
TOTAL CONNECTED DEMAND LOAD		16.03 KVA
		26.03 KVA @ 360V / (3PHASE) = 7131 AMPERS

GENERAL INTERIOR FINISH SCHEDULE:

- OFFICE FLOOR AREA: GLAZED CARPET PATTERN 1 COLOR AS PER THE OWNER OR VINYL COMP. TILES (VCT) - SEE OWNER FOR CHANGES
- BREAK ROOM 1 R/R FLOOR AREA: VINYL COMPOSITION TILES PAT. 1 COLOR AS SELECTED BY THE OWNER
- BASE: 4" VINYL COVE OR 3/4" PAINTED WOOD. COLOR AS SELECTED BY THE OWNER
- TRIM: COVER CROWN, CASINGS, CHAIRRAILS AND THE LIKE AS PER DETAIL. PAINT COLOR AS SELECTED BY THE OWNER
- WALLS: 5/8" GIB. PAPERED AND PAINTED 2 COATS LATEX WALL PAINT. COLOR 1 GLOSS AS SELECTED BY THE OWNER
- RESTROOM CEILING: 5/8" GIB. DIRECT LUNG. TIESED 1 FINISHED W/ 2 COATS OF LATEX CEILING PAINT - GLOSS AS SELECTED BY THE OWNER
- MAN CEILING: 24" X 48" X 5/8" LAY-IN CEILING TILES IN WHITE PAINTED 80/20 GRID AS PER ARCHITECT'S CORTEXE PATTERN
- APPLIED FINISHES: APPLIED FINISHED TO GIB. (ie. GYP. AT KNOCK-DOWN 96" TROUBLE AND STYLING TREATMENTS AS DIRECTED BY THE OWNER
- CABINETS: AS SELECTED BY THE LEASEDOR PER MINIMUM 1/4" GRADE. 108"OT FINISH SHALL BE PLASTIC LAM. AS SELECTED BY THE OWNER

NOTE!
SHOP AREA FINISHES TO BE EXPOSED STRUCTURAL FINISHES UNLESS DIRECTED OTHERWISE BY OWNER

NOTE!
ALL COLORS, TEXTURES, STYLES, FINISHES AND SPOORTS SHALL BE AS SELECTED BY THE OWNER FROM CONTRACTOR SUPPLIED SAMPLE/CUT SHEETS



- Service Entrance: Service Entrance Conductor, 3/4" 14S4 COPPER, 110V, 120V, 240V, 480V, 600V, 720V, 840V, 960V, 1080V, 1200V, 1320V, 1440V, 1560V, 1680V, 1800V, 1920V, 2040V, 2160V, 2280V, 2400V, 2520V, 2640V, 2760V, 2880V, 3000V, 3120V, 3240V, 3360V, 3480V, 3600V, 3720V, 3840V, 3960V, 4080V, 4200V, 4320V, 4440V, 4560V, 4680V, 4800V, 4920V, 5040V, 5160V, 5280V, 5400V, 5520V, 5640V, 5760V, 5880V, 6000V, 6120V, 6240V, 6360V, 6480V, 6600V, 6720V, 6840V, 6960V, 7080V, 7200V, 7320V, 7440V, 7560V, 7680V, 7800V, 7920V, 8040V, 8160V, 8280V, 8400V, 8520V, 8640V, 8760V, 8880V, 9000V, 9120V, 9240V, 9360V, 9480V, 9600V, 9720V, 9840V, 9960V, 10080V, 10200V, 10320V, 10440V, 10560V, 10680V, 10800V, 10920V, 11040V, 11160V, 11280V, 11400V, 11520V, 11640V, 11760V, 11880V, 12000V, 12120V, 12240V, 12360V, 12480V, 12600V, 12720V, 12840V, 12960V, 13080V, 13200V, 13320V, 13440V, 13560V, 13680V, 13800V, 13920V, 14040V, 14160V, 14280V, 14400V, 14520V, 14640V, 14760V, 14880V, 15000V, 15120V, 15240V, 15360V, 15480V, 15600V, 15720V, 15840V, 15960V, 16080V, 16200V, 16320V, 16440V, 16560V, 16680V, 16800V, 16920V, 17040V, 17160V, 17280V, 17400V, 17520V, 17640V, 17760V, 17880V, 18000V, 18120V, 18240V, 18360V, 18480V, 18600V, 18720V, 18840V, 18960V, 19080V, 19200V, 19320V, 19440V, 19560V, 19680V, 19800V, 19920V, 20040V, 20160V, 20280V, 20400V, 20520V, 20640V, 20760V, 20880V, 21000V, 21120V, 21240V, 21360V, 21480V, 21600V, 21720V, 21840V, 21960V, 22080V, 22200V, 22320V, 22440V, 22560V, 22680V, 22800V, 22920V, 23040V, 23160V, 23280V, 23400V, 23520V, 23640V, 23760V, 23880V, 24000V, 24120V, 24240V, 24360V, 24480V, 24600V, 24720V, 24840V, 24960V, 25080V, 25200V, 25320V, 25440V, 25560V, 25680V, 25800V, 25920V, 26040V, 26160V, 26280V, 26400V, 26520V, 26640V, 26760V, 26880V, 27000V, 27120V, 27240V, 27360V, 27480V, 27600V, 27720V, 27840V, 27960V, 28080V, 28200V, 28320V, 28440V, 28560V, 28680V, 28800V, 28920V, 29040V, 29160V, 29280V, 29400V, 29520V, 29640V, 29760V, 29880V, 30000V, 30120V, 30240V, 30360V, 30480V, 30600V, 30720V, 30840V, 30960V, 31080V, 31200V, 31320V, 31440V, 31560V, 31680V, 31800V, 31920V, 32040V, 32160V, 32280V, 32400V, 32520V, 32640V, 32760V, 32880V, 33000V, 33120V, 33240V, 33360V, 33480V, 33600V, 33720V, 33840V, 33960V, 34080V, 34200V, 34320V, 34440V, 34560V, 34680V, 34800V, 34920V, 35040V, 35160V, 35280V, 35400V, 35520V, 35640V, 35760V, 35880V, 36000V, 36120V, 36240V, 36360V, 36480V, 36600V, 36720V, 36840V, 36960V, 37080V, 37200V, 37320V, 37440V, 37560V, 37680V, 37800V, 37920V, 38040V, 38160V, 38280V, 38400V, 38520V, 38640V, 38760V, 38880V, 39000V, 39120V, 39240V, 39360V, 39480V, 39600V, 39720V, 39840V, 39960V, 40080V, 40200V, 40320V, 40440V, 40560V, 40680V, 40800V, 40920V, 41040V, 41160V, 41280V, 41400V, 41520V, 41640V, 41760V, 41880V, 42000V, 42120V, 42240V, 42360V, 42480V, 42600V, 42720V, 42840V, 42960V, 43080V, 43200V, 43320V, 43440V, 43560V, 43680V, 43800V, 43920V, 44040V, 44160V, 44280V, 44400V, 44520V, 44640V, 44760V, 44880V, 45000V, 45120V, 45240V, 45360V, 45480V, 45600V, 45720V, 45840V, 45960V, 46080V, 46200V, 46320V, 46440V, 46560V, 46680V, 46800V, 46920V, 47040V, 47160V, 47280V, 47400V, 47520V, 47640V, 47760V, 47880V, 48000V, 48120V, 48240V, 48360V, 48480V, 48600V, 48720V, 48840V, 48960V, 49080V, 49200V, 49320V, 49440V, 49560V, 49680V, 49800V, 49920V, 50040V, 50160V, 50280V, 50400V, 50520V, 50640V, 50760V, 50880V, 51000V, 51120V, 51240V, 51360V, 51480V, 51600V, 51720V, 51840V, 51960V, 52080V, 52200V, 52320V, 52440V, 52560V, 52680V, 52800V, 52920V, 53040V, 53160V, 53280V, 53400V, 53520V, 53640V, 53760V, 53880V, 54000V, 54120V, 54240V, 54360V, 54480V, 54600V, 54720V, 54840V, 54960V, 55080V, 55200V, 55320V, 55440V, 55560V, 55680V, 55800V, 55920V, 56040V, 56160V, 56280V, 56400V, 56520V, 56640V, 56760V, 56880V, 57000V, 57120V, 57240V, 57360V, 57480V, 57600V, 57720V, 57840V, 57960V, 58080V, 58200V, 58320V, 58440V, 58560V, 58680V, 58800V, 58920V, 59040V, 59160V, 59280V, 59400V, 59520V, 59640V, 59760V, 59880V, 60000V, 60120V, 60240V, 60360V, 60480V, 60600V, 60720V, 60840V, 60960V, 61080V, 61200V, 61320V, 61440V, 61560V, 61680V, 61800V, 61920V, 62040V, 62160V, 62280V, 62400V, 62520V, 62640V, 62760V, 62880V, 63000V, 63120V, 63240V, 63360V, 63480V, 63600V, 63720V, 63840V, 63960V, 64080V, 64200V, 64320V, 64440V, 64560V, 64680V, 64800V, 64920V, 65040V, 65160V, 65280V, 65400V, 65520V, 65640V, 65760V, 65880V, 66000V, 66120V, 66240V, 66360V, 66480V, 66600V, 66720V, 66840V, 66960V, 67080V, 67200V, 67320V, 67440V, 67560V, 67680V, 67800V, 67920V, 68040V, 68160V, 68280V, 68400V, 68520V, 68640V, 68760V, 68880V, 69000V, 69120V, 69240V, 69360V, 69480V, 69600V, 69720V, 69840V, 69960V, 70080V, 70200V, 70320V, 70440V, 70560V, 70680V, 70800V, 70920V, 71040V, 71160V, 71280V, 71400V, 71520V, 71640V, 71760V, 71880V, 72000V, 72120V, 72240V, 72360V, 72480V, 72600V, 72720V, 72840V, 72960V, 73080V, 73200V, 73320V, 73440V, 73560V, 73680V, 73800V, 73920V, 74040V, 74160V, 74280V, 74400V, 74520V, 74640V, 74760V, 74880V, 75000V, 75120V, 75240V, 75360V, 75480V, 75600V, 75720V, 75840V, 75960V, 76080V, 76200V, 76320V, 76440V, 76560V, 76680V, 76800V, 76920V, 77040V, 77160V, 77280V, 77400V, 77520V, 77640V, 77760V, 77880V, 78000V, 78120V, 78240V, 78360V, 78480V, 78600V, 78720V, 78840V, 78960V, 79080V, 79200V, 79320V, 79440V, 79560V, 79680V, 79800V, 79920V, 80040V, 80160V, 80280V, 80400V, 80520V, 80640V, 80760V, 80880V, 81000V, 81120V, 81240V, 81360V, 81480V, 81600V, 81720V, 81840V, 81960V, 82080V, 82200V, 82320V, 82440V, 82560V, 82680V, 82800V, 82920V, 83040V, 83160V, 83280V, 83400V, 83520V, 83640V, 83760V, 83880V, 84000V, 84120V, 84240V, 84360V, 84480V, 84600V, 84720V, 84840V, 84960V, 85080V, 85200V, 85320V, 85440V, 85560V, 85680V, 85800V, 85920V, 86040V, 86160V, 86280V, 86400V, 86520V, 86640V, 86760V, 86880V, 87000V, 87120V, 87240V, 87360V, 87480V, 87600V, 87720V, 87840V, 87960V, 88080V, 88200V, 88320V, 88440V, 88560V, 88680V, 88800V, 88920V, 89040V, 89160V, 89280V, 89400V, 89520V, 89640V, 89760V, 89880V, 90000V, 90120V, 90240V, 90360V, 90480V, 90600V, 90720V, 90840V, 90960V, 91080V, 91200V, 91320V, 91440V, 91560V, 91680V, 91800V, 91920V, 92040V, 92160V, 92280V, 92400V, 92520V, 92640V, 92760V, 92880V, 93000V, 93120V, 93240V, 93360V, 93480V, 93600V, 93720V, 93840V, 93960V, 94080V, 94200V, 94320V, 94440V, 94560V, 94680V, 94800V, 94920V, 95040V, 95160V, 95280V, 95400V, 95520V, 95640V, 95760V, 95880V, 96000V, 96120V, 96240V, 96360V, 96480V, 96600V, 96720V, 96840V, 96960V, 97080V, 97200V, 97320V, 97440V, 97560V, 97680V, 97800V, 97920V, 98040V, 98160V, 98280V, 98400V, 98520V, 98640V, 98760V, 98880V, 99000V, 99120V, 99240V, 99360V, 99480V, 99600V, 99720V, 99840V, 99960V, 100080V, 100200V, 100320V, 100440V, 100560V, 100680V, 100800V, 100920V, 101040V, 101160V, 101280V, 101400V, 101520V, 101640V, 101760V, 101880V, 102000V, 102120V, 102240V, 102360V, 102480V, 102600V, 102720V, 102840V, 102960V, 103080V, 103200V, 103320V, 103440V, 103560V, 103680V, 103800V, 103920V, 104040V, 104160V, 104280V, 104400V, 104520V, 104640V, 104760V, 104880V, 105000V, 105120V, 105240V, 105360V, 105480V, 105600V, 105720V, 105840V, 105960V, 106080V, 106200V, 106320V, 106440V, 106560V, 106680V, 106800V, 106920V, 107040V, 107160V, 107280V, 107400V, 107520V, 107640V, 107760V, 107880V, 108000V, 108120V, 108240V, 108360V, 108480V, 108600V, 108720V, 108840V, 108960V, 109080V, 109200V, 109320V, 109440V, 109560V, 109680V, 109800V, 109920V, 110040V, 110160V, 110280V, 110400V, 110520V, 110640V, 110760V, 110880V, 111000V, 111120V, 111240V, 111360V, 111480V, 111600V, 111720V, 111840V, 111960V, 112080V, 112200V, 112320V, 112440V, 112560V, 112680V, 112800V, 112920V, 113040V, 113160V, 113280V, 113400V, 113520V, 113640V, 113760V, 113880V, 114000V, 114120V, 114240V, 114360V, 114480V, 114600V, 114720V, 114840V, 114960V, 115080V, 115200V, 115320V, 115440V, 115560V, 115680V, 115800V, 115920V, 116040V, 116160V, 116280V, 116400V, 116520V, 116640V, 116760V, 116880V, 117000V, 117120V, 117240V, 117360V, 117480V, 117600V, 117720V, 117840V, 117960V, 118080V, 118200V, 118320V, 118440V, 118560V, 118680V, 118800V, 118920V, 119040V, 119160V, 119280V, 119400V, 119520V, 119640V, 119760V, 119880V, 120000V, 120120V, 120240V, 120360V, 120480V, 120600V, 120720V, 120840V, 120960V, 121080V, 121200V, 121320V, 121440V, 121560V, 121680V, 121800V, 121920V, 122040V, 122160V, 122280V, 122400V, 122520V, 122640V, 122760V, 122880V, 123000V, 123120V, 123240V, 123360V, 123480V, 123600V, 123720V, 123840V, 123960V, 124080V, 124200V, 124320V, 124440V, 124560V, 124680V, 124800V, 124920V, 125040V, 125160V, 125280V, 125400V, 125520V, 125640V, 125760V, 125880V, 126000V, 126120V, 126240V, 126360V, 126480V, 126600V, 126720V, 126840V, 126960V, 127080V, 127200V, 127320V, 127440V, 127560V, 127680V, 127800V, 127920V, 128040V, 128160V, 128280V, 128400V, 128520V, 128640V, 128760V, 128880V, 129000V, 129120V, 129240V, 129360V, 129480V, 129600V, 129720V, 129840V, 129960V, 130080V, 130200V, 130320V, 130440V, 130560V, 130680V, 130800V, 130920V, 131040V, 131160V, 131280V, 131400V, 131520V, 131640V, 131760V, 131880V, 132000V, 132120V, 132240V, 132360V, 132480V, 132600V, 132720V, 132840V, 132960V, 133080V, 133200V, 133320V, 133440V, 133560V, 133680V, 133800V, 133920V, 134040V, 134160V, 134280V, 134400V, 134520V, 134640V, 134760V, 134880V, 135000V, 135120V, 135240V, 135360V, 135480V, 135600V, 135720V, 135840V, 135960V, 136080V, 136200V, 136320V, 136440V, 136560V, 136680V, 136800V, 136920V, 137040V, 137160V, 137280V, 137400V, 137520V, 137640V, 137760V, 137880V, 138000V, 138120V, 138240V, 138360V, 138480V, 138600V, 138720V, 138840V, 138960V, 139080V, 139200V, 139320V, 139440V, 139560V, 139680V, 139800V, 139920V, 140040V, 140160V, 140280V, 140400V, 140520V, 140640V, 140760V, 140880V, 141000V, 141120V, 141240V, 141360V, 141480V, 141600V, 141720V, 141840V, 141960V, 142080V, 142200V, 142320V, 142440V, 142560V, 142680V, 142800V, 142920V, 143040V, 143160V, 143280V, 143400V, 143520V, 143640V, 143760V, 143880V, 144000V, 144120V, 144240V, 144360V, 144480V, 144600V, 144720V, 144840V, 144960V, 145080V, 145200V, 145320V, 1

